

Houston Pilots Forecast Package



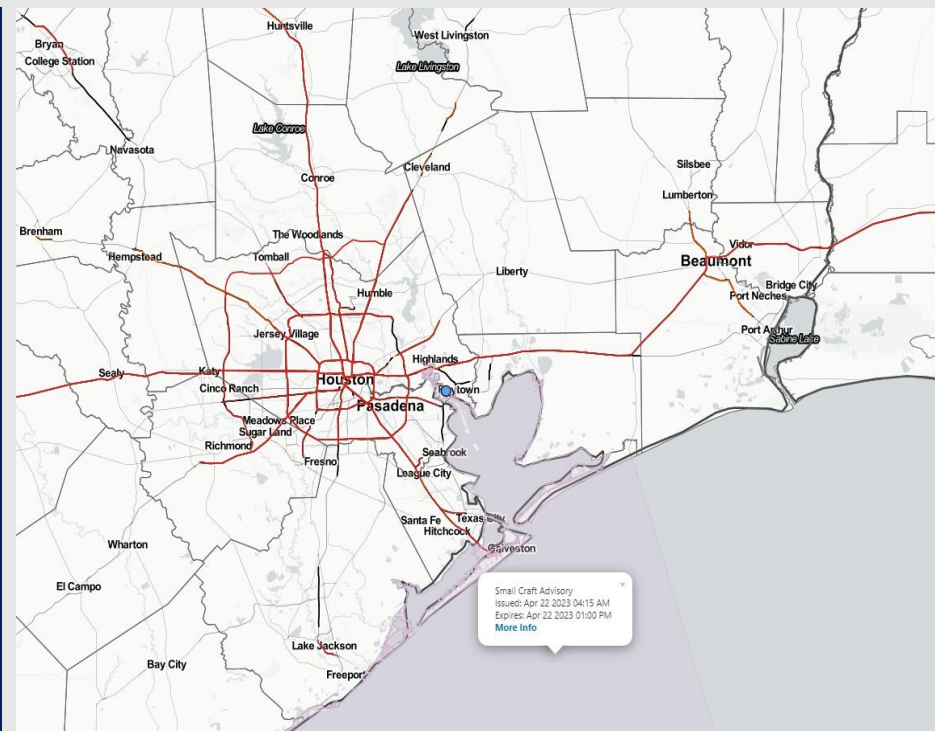
Updated: 4:45 AM CT

Saturday, April 22, 2023

Forecaster: Jonathan Kipper

Weather Headlines

- Anticipating gusty winds be start up this morning and continue over the weekend.
- Fog threats look rather limited moving forward over the next several days.
- Minor chances for sporadic showers through the weekend with better rain chances coming in early next week.



Radar/NWS Alerts: 4:45 AM CT



As always, please do not hesitate to reach out to us with any forecast questions via the chat option on the Weather Porthole or our on-call number, **(317)-560-8122** press 1 for forecast questions.

Houston Pilots Extended Range Visibility Report



Tuesday 4/25/23

Reduced visibility does not look to be a concern for Tuesday.

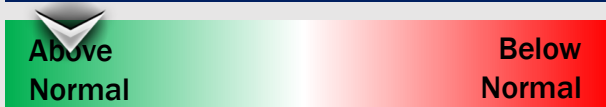
Forecast Confidence



Thursday 4/27/23

Reduced visibility does not look to be a concern for Thursday.

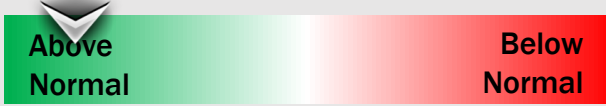
Forecast Confidence



Wednesday 4/26/23

Reduced visibility does not look to be a concern for Wednesday.

Forecast Confidence



Chance for Reduced Visibility

Tuesday AM	Unlikely
Tuesday PM	Unlikely
Wednesday AM	Unlikely
Wednesday PM	Unlikely
Thursday AM	Unlikely
Thursday PM	Unlikely

Houston Pilots Visibility Chart (miles)



Time	Sat 3am	Sat 4am	Sat 5am	Sat 6am	Sat 7am	Sat 8am	Sat 9am	Sat 10am	Sat 11am	Sat 12pm	Sat 1pm	Sat 2pm	Sat 3pm	Sat 4pm	Sat 5pm	Sat 6pm	Sat 7pm	Sat 8pm	Sat 9pm	Sat 10pm	Sat 11pm	Sun 12am	Sun 1am	Sun 2am	Sun 3am	Sun 4am	Sun 5am	Sun 6am	Sun 7am	Sun 8am	Sun 9am	Sun 10am	Sun 11am	Sun 12pm	Sun 1pm	Sun 2pm
610 Bridge	10	10	10	10	10	10	10	10	10	10	10	10	10	10	10	10	10	10	10	10	10	10	10	10	10	10	10	10	10	10	10	10	10	10	10	10
Kinder 1	10	10	10	10	10	10	10	10	10	10	10	10	10	10	10	10	10	10	10	10	10	10	10	10	10	10	10	10	10	10	10	10	10	10	10	10
Greens Bayou	10	10	10	10	10	10	10	10	10	10	10	10	10	10	10	10	10	10	10	10	10	10	10	10	10	10	10	10	10	10	10	10	10	10	10	10
Shell Crude	10	10	10	10	10	10	10	10	10	10	10	10	10	10	10	10	10	10	10	10	10	10	10	10	10	10	10	10	10	10	10	10	10	10	10	10
Lynchburg Ferries	10	10	10	10	10	10	10	10	10	10	10	10	10	10	10	10	10	10	10	10	10	10	10	10	10	10	10	10	10	10	10	10	10	10	10	10
Exxon 3	10	10	10	10	10	10	10	10	10	10	10	10	10	10	10	10	10	10	10	10	10	10	10	10	10	10	10	10	10	10	10	10	10	10	10	10
Morgans Point	10	10	10	10	10	10	10	10	10	10	10	10	10	10	10	10	10	10	10	10	10	10	10	10	10	10	10	10	10	10	10	10	10	10	10	10
75/76	10	10	10	10	10	10	10	10	10	10	10	10	10	10	10	10	10	10	10	10	10	10	10	10	10	10	10	10	10	10	10	10	10	10	10	10
63/64	10	10	10	10	10	10	10	10	10	10	10	10	10	10	10	10	10	10	10	10	10	10	10	10	10	10	10	10	10	10	10	10	10	10	10	10
51/52	10	10	10	10	10	10	10	10	10	10	10	10	10	10	10	10	10	10	10	10	10	10	10	10	10	10	10	10	10	10	10	10	10	10	10	10
37/38	10	10	10	10	10	10	10	10	10	10	10	10	10	10	10	10	10	10	10	10	10	10	10	10	10	10	10	10	10	10	10	10	10	10	10	10
25/26	10	10	10	10	10	10	10	10	10	10	10	10	10	10	10	10	10	10	10	10	10	10	10	10	10	10	10	10	10	10	10	10	10	10	10	10
11/12	10	10	10	10	10	10	10	10	10	10	10	10	10	10	10	10	10	10	10	10	10	10	10	10	10	10	10	10	10	10	10	10	10	10	10	10
1 & 2 Bravo	10	10	10	10	10	10	10	10	10	10	10	10	10	10	10	10	10	10	10	10	10	10	10	10	10	10	10	10	10	10	10	10	10	10	10	10

NOTE: This is automated data that may/may not agree with the official BAM thinking that's found on the daily slides or special visibility report slides. This data should be used as a guide only

Houston Pilots Wind Chart



Sustained wind 13 Knots
Gusts 18 Knots
Wind from the N

Example

WS: 13
G:18
N

Time Knots	Sat 3am	Sat 4am	Sat 5am	Sat 6am	Sat 7am	Sat 8am	Sat 9am	Sat 10am	Sat 11am	Sat 12pm	Sat 1pm	Sat 2pm	Sat 3pm	Sat 4pm	Sat 5pm	Sat 6pm	Sat 7pm	Sat 8pm	Sat 9pm	Sat 10pm	Sat 11pm	Sun 12am	Sun 1am	Sun 2am	Sun 3am	Sun 4am	Sun 5am	Sun 6am	Sun 7am	Sun 8am	Sun 9am	Sun 10am	Sun 11am	Sun 12pm	Sun 1pm	Sun 2pm
610 Bridge	5	5	6	6	5	8	10	10	10	9	9	10	11	11	10	11	10	9	7	5	5	5	5	5	6	6	7	7	7	9	9	10	12	12	12	12
	15	12	12	13	12	21	22	19	15	13	12	14	15	15	15	16	15	13	10	8	8	7	8	7	9	10	10	11	11	14	13	16	16	17	17	15
	NE	NE	ENE	ENE	E	E	E	E	E	ESE	ESE	ESE	ESE	ESE	ESE	SE	SE	SE	ESE	ESE	E	E	E	E	E	ENE	NE	ENE	ENE	ENE	ENE	E	E	E	E	
Kinder 1	6	4	5	6	4	8	9	10	9	9	9	10	11	11	10	11	10	9	6	5	5	5	5	6	6	6	7	7	8	9	11	12	12	12	12	
	15	12	12	13	12	21	23	19	16	13	12	14	15	16	15	16	15	13	10	8	8	7	8	8	9	10	10	11	11	13	13	16	16	16	15	
	NE	NE	ENE	ENE	E	E	E	E	E	ESE	ESE	ESE	ESE	ESE	ESE	SE	SE	SE	ESE	ESE	E	E	E	E	E	ENE	NE	ENE	ENE	ENE	ENE	E	E	E	E	
Greens Bayou	6	3	4	5	4	7	9	9	9	9	8	9	11	11	10	11	10	8	6	5	5	5	5	6	6	7	7	7	8	9	11	12	13	12	12	
	14	10	12	13	12	22	23	20	16	13	12	13	15	15	15	15	15	13	10	8	8	7	8	8	9	10	10	11	11	13	13	16	16	15	16	14
	NE	NE	ENE	ENE	E	E	E	E	E	ESE	ESE	ESE	ESE	ESE	ESE	SE	SE	SE	ESE	ESE	E	E	E	E	E	ENE	NE	ENE	ENE	ENE	ENE	E	E	E	E	
Shell Crude	5	3	4	5	4	7	9	9	9	9	9	10	11	11	10	11	10	9	7	6	6	5	5	6	6	7	7	8	8	9	12	12	13	12	12	
	15	11	12	13	13	21	22	20	16	13	12	13	15	15	15	16	15	13	10	8	8	8	8	8	9	10	10	11	11	13	13	16	16	15	16	14
	NNE	5	3	4	5	6	8	8	8	8	8	9	10	10	10	11	10	9	7	6	6	6	6	7	7	7	8	8	9	10	12	13	13	13	12	
Lynchburg Ferries	13	11	12	13	13	21	22	20	17	13	11	12	14	14	15	15	14	12	10	9	8	8	8	8	9	10	10	11	12	13	13	16	15	15	16	14
	NNE	5	4	5	6	8	8	8	8	8	8	9	10	10	10	12	11	9	8	7	7	6	6	7	7	8	8	8	9	10	12	13	13	13	12	
	NE	NE	ENE	ENE	E	E	E	E	E	ESE	ESE	ESE	ESE	ESE	ESE	SE	SE	SE	ESE	ESE	E	E	E	E	ENE	NE	ENE	ENE	ENE	ENE	E	E	E	E		
Exxon 3	15	12	14	15	15	21	22	20	17	13	11	12	14	15	15	16	15	13	11	9	9	9	8	9	10	10	11	11	12	13	16	15	16	14		
	NNE	8	7	8	10	11	11	12	10	9	10	11	12	12	12	14	13	12	11	9	9	9	8	9	9	9	10	10	11	11	12	14	15	15	13	
	NE	NE	ENE	ENE	ENE	E	E	E	E	ESE	ESE	ESE	ESE	ESE	ESE	SE	SE	SE	ESE	ESE	ESE	E	E	E	ENE	NE	ENE	ENE	ENE	ENE	E	E	E	E		
Morgans Point	19	15	18	18	19	21	22	20	17	13	13	14	15	16	16	17	16	15	13	11	11	10	10	10	11	12	12	13	14	15	17	17	17	15		
	NNE	8	7	8	10	11	11	12	10	9	10	11	12	12	12	14	13	12	11	9	9	9	8	9	9	10	10	11	11	12	14	15	15	13		
	NE	NE	ENE	ENE	ENE	E	E	E	E	ESE	ESE	ESE	ESE	ESE	ESE	SE	SE	SE	ESE	ESE	ESE	E	E	E	E	ENE	ENE	ENE	ENE	ENE	ENE	E	E	E		
75/76	15	14	16	18	19	18	16	15	13	13	14	15	15	15	17	16	15	14	13	12	12	11	12	12	12	13	14	14	15	15	16	18	18	17	16	
	22	19	21	22	23	24	23	21	17	15	15	16	17	17	19	18	17	16	14	14	13	12	12	13	14	14	15	16	17	18	20	19	19	18		
	NE	NE	NE	ENE	ENE	E	E	E	E	ESE	ESE	ESE	ESE	ESE	ESE	ESE	ESE	ESE	ESE	ESE	ESE	ESE	ESE	ESE	E	E	ENE	ENE	ENE	ENE	ENE	E	E	E	E	
63/64	19	17	19	20	20	19	17	16	16	15	15	16	16	18	17	16	15	14	13	13	12	13	12	13	13	14	15	16	17	18	19	20	19	18		
	23	21	23	25	24	26	23	21	18	17	16	16	17	18	20	19	18	16	15	15	14	13	13	14	15	15	16	17	18	19	21	21	20	19		
	NE	NE	NE	ENE	ENE	E	E	E	E	ESE	ESE	ESE	ESE	ESE	ESE	ESE	ESE	ESE	ESE	ESE	ESE	ESE	ESE	ESE	E	E	E	ENE	ENE	ENE	ENE	E	E	E	E	
51/52	20	17	18	19	20	19	17	18	18	16	15	15	16	16	17	17	15	14	13	12	11	12	12	13	13	14	14	15	16	17	19	19	19	18		
	24	22	24	26	25	26	23	21	20	18	17	16	17	18	19	18	17	16	14	14	14	12	14	14	14	15	16	17	17	19	21	21	21	20		
	NE	NE	NE	ENE	ENE	E	E	E	E	ESE	ESE	ESE	ESE	ESE	ESE	ESE	ESE	ESE	ESE	ESE	ESE	ESE	ESE	ESE	E	E	E	ENE	ENE	ENE	ENE	E	E	E	E	
37/38	19	17	18	18	19	18	17	18	18	16	15	15	16	16	17	16	15	14	13	13	12	11	12	12	13	13	14	15	16	17	19	19	20	19		
	24	22	24	26	25	25	22	22	21	19	17	16	18	18	19	17	16	15	14	14	13	12	13	13	14	15	16	17	17	19	21	21	22	20		
	NE	NE	NE	ENE	ENE	E	E	E	E	ESE	ESE	ESE	ESE	ESE	ESE	ESE	ESE	ESE	ESE	ESE	ESE	ESE	ESE	ESE	ESE	E	E	E	E	E	E	E	E	E		
25/26	17	15	16	17	17	16	16	18	17	16	15	14	15	15	15	14	13	12	12	12	11	11	11	11	12	13	13	14	14	16	18	18	19	18		
	23	22	24	26	25	24	22	22	21	19	17	16	18	18	18	16	15	14	13	13	13	12	13	13	14	14	15	16	16	18	20	20	21	20		
	NNE	16	15	16	17	18	18	18	18	16	15	14	15	16	15	14	13	13	12	12	12	11	12	12	12	13	13	14	15	16	18	18	19	19		
11/12	23	22	24	26	25	25	23	22	21	19	17	16	16	18	19	18	16	15	14	14	14	13	12	13	13	14	14	15	16	16	17	20	21	21	20	
	NNE	21	20	20	21	21	20	20	20	18	16	15	14	16	17	16	15	14	13	13	13	12	13	13	14	15	15	16	17	19	21	22	23	22		
	NE	NE	NE	ENE	ENE	E	E	E	E	E	E	E	ESE	ESE	ESE	ESE	ESE	ESE	ESE	ESE	ESE	ESE	ESE	ESE	ESE	ESE	E	E	E	E	E	E	E	E		
1 & 2 Bravo	25	25	25	26	26	26	24	23	22	20	18	16	15	18	19	19	18	17	16	16	15	15	14	14	15	15	16	17	19	19	20	22	24	25	24	
	NNE	NE	NE	ENE	ENE	E	E	E	E	E	E	E	ESE	ESE	ESE	ESE	ESE	ESE	ESE	ESE	ESE	ESE	ESE	ESE	ESE	ESE	E	E	E	E	E	E	E	E		

NOTE: This is automated data that may/may not agree with the official BAM thinking that's found on the daily slides.
This data should be used as a guide only

Houston Pilots: Sat. 4/22/2023

Forecast Discussion

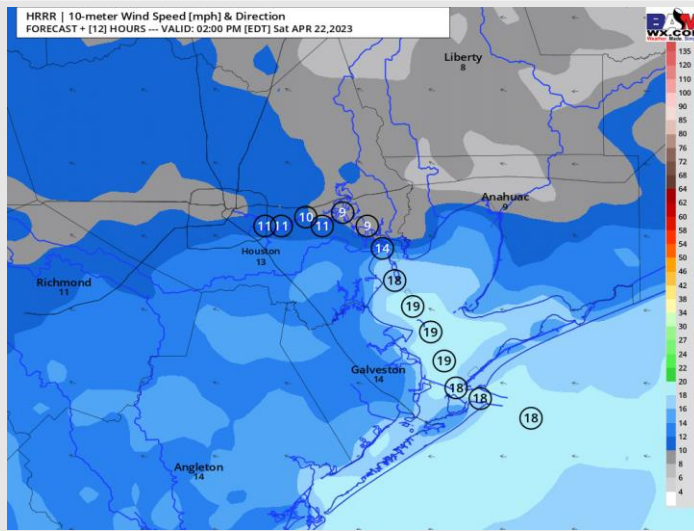
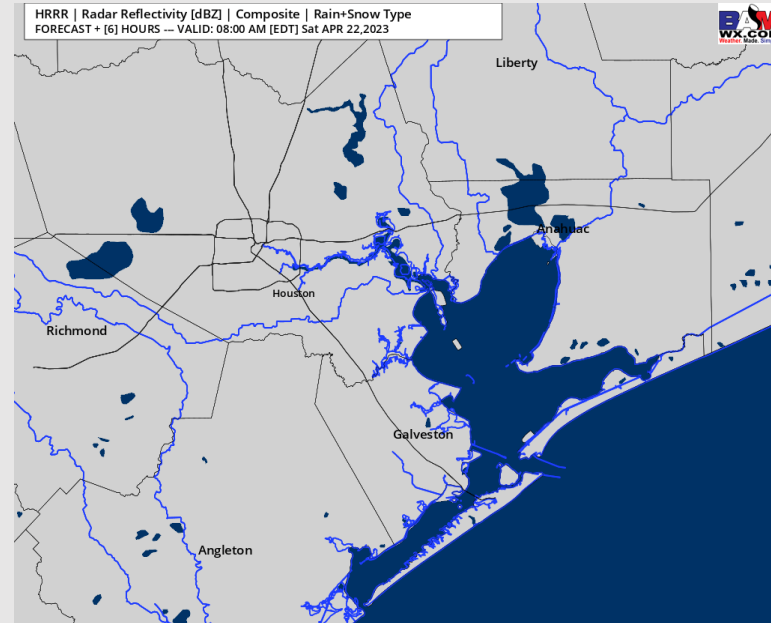
Precip: Anticipating dry conditions throughout the day today.

Wind: Winds will start out of the NE throughout the AM hours today, gradually shifting out of the E by 12 PM, then the SE by 5 PM and continue the rest of the day. Winds north of Morgan's Point will be 7-13 kts and winds south of Morgan's Point being 15-22 kts through 8 PM. After 8 PM, winds both north and south of Morgan's Point will calm down to 3-8 kts and 9-14 kts respectfully.

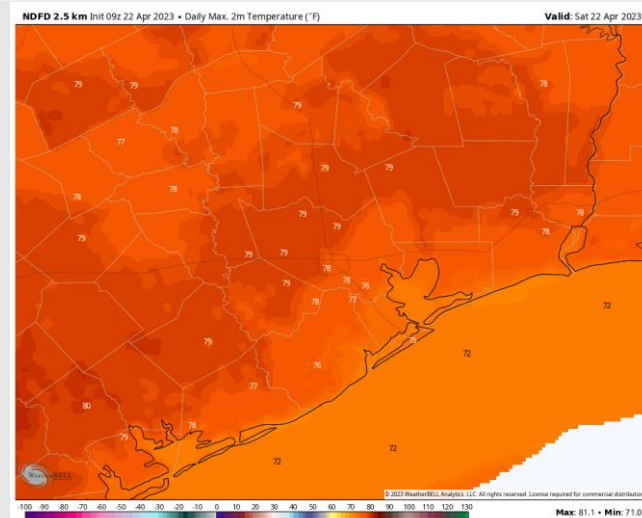
Temps: High temperatures today will be in the lower 70s F south of Morgan's Point and upper 70s F north of Morgan's Point.

Visibility: No reduced visibility concerns expected at this time.

Precip Image: 7 AM CT



Wind Speed:
1 PM CT



High Temps
Today

Houston Pilots: Sun. 4/23/2023

Forecast Discussion

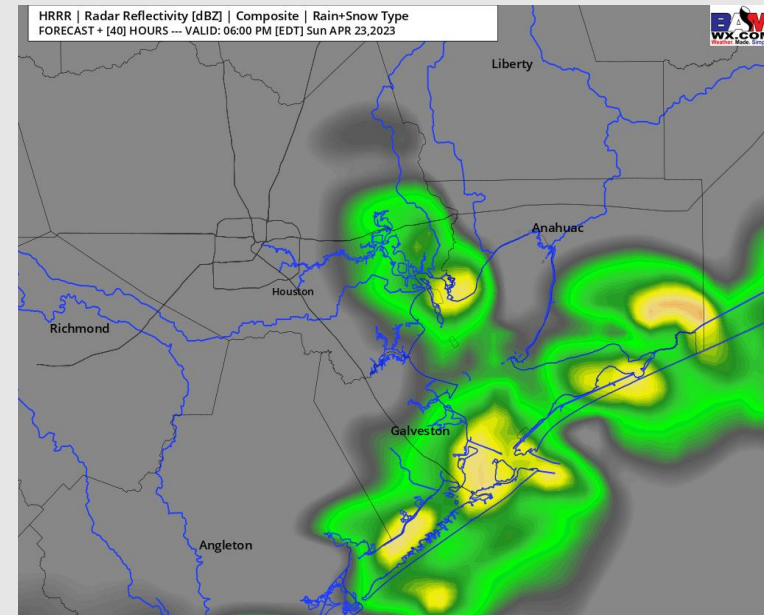
Precip: Favoring dry conditions throughout the morning on Sunday. After 12 PM favoring a 30-40% chance for a few scattered showers through 7 PM, then dry conditions once again the rest of the day Sunday.

Wind: Winds will be out of the E throughout the day Sunday. Winds N of Morgan's Point will be 4-7 kts until around 5 AM. Then after 5 AM, winds will pick up 9-15 kts throughout the rest of the day Sunday. Winds S of Morgan's Point will be 9-15 kts until around 5 AM. Then winds will pick up to 17-23 kts for the rest of the day.

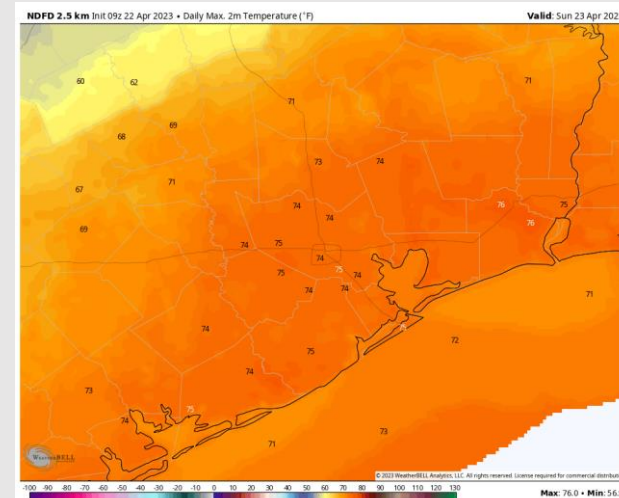
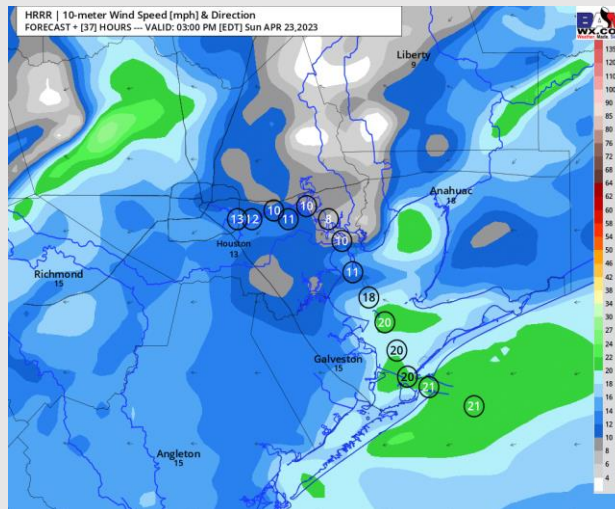
Temps: High temps Sunday will be in the low to mid 70s F across all stations.

Visibility: No visibility issues anticipated.

Precip Image: 5 PM CT



Wind Speed:
2 PM CT



High Temps
Sunday

Houston Pilots: Mon. 4/24/2023

Forecast Discussion

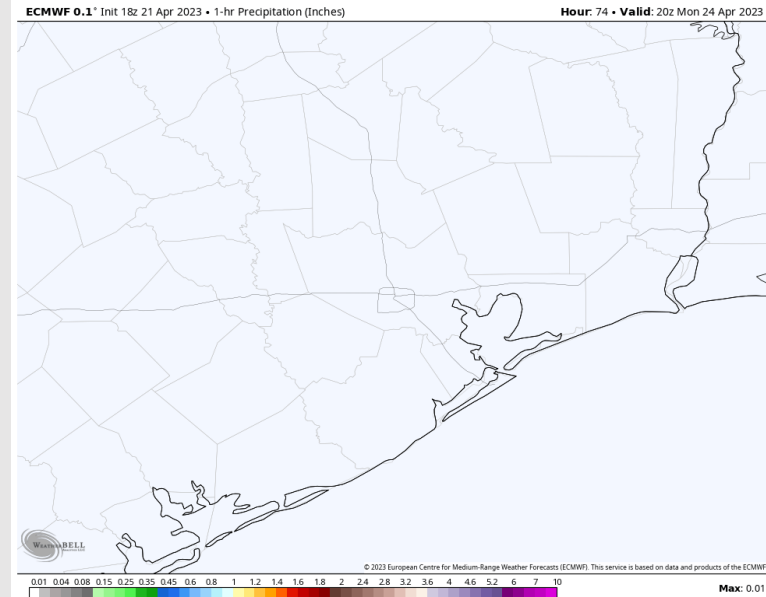
Precip: Anticipating dry conditions throughout the day Monday.

Wind: Sustained winds out of the NE Monday in the 10 – 15 kts range for stations N of Morgan's Point with stations S of Morgan's Point at 18 - 23 kts. Elevated wind gusts up to 30+ kts will be possible early Monday AM.

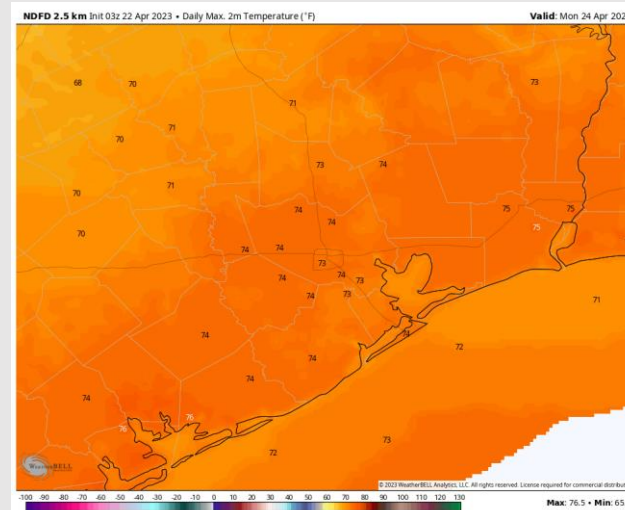
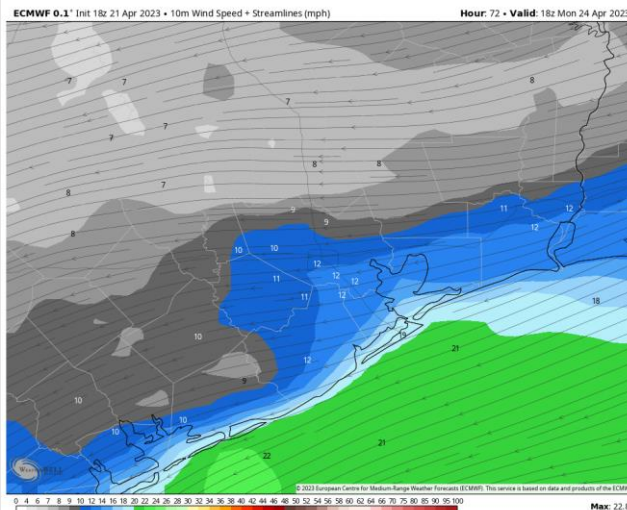
Temps: High temperatures Monday in the low 70s F across all stations.

Visibility: Not anticipating any visibility concerns at this time.

Precip Image: 3 PM CT



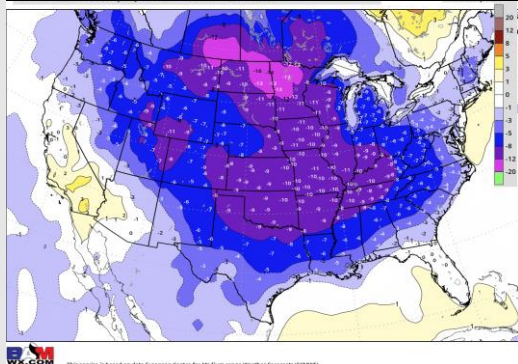
Wind Speed:
1 PM CT



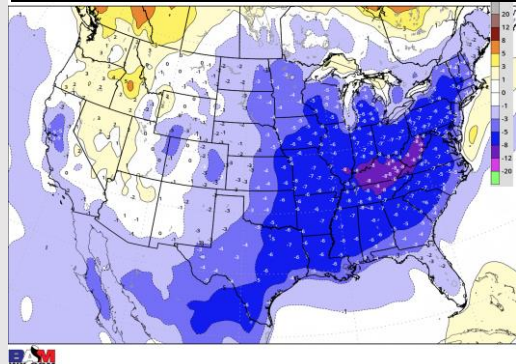
High Temps
Monday

Houston Pilots: 4/22/2023

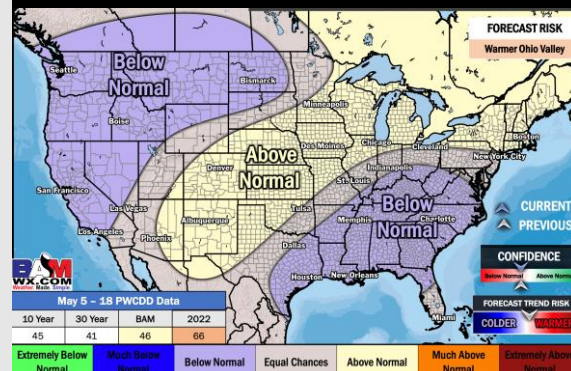
Next 7 Day Temperature Departure



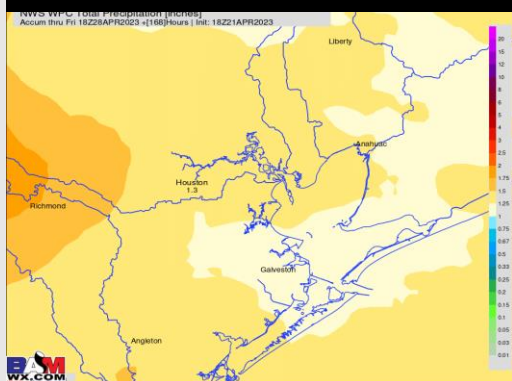
8-14 Day Temperature Departure



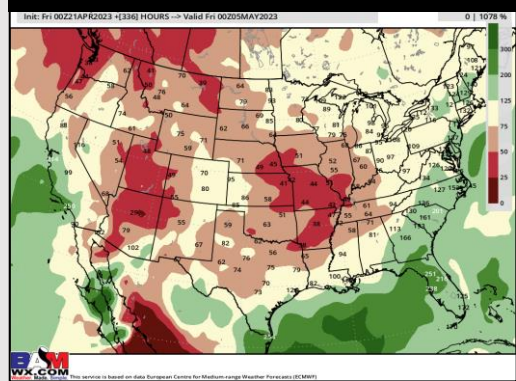
15-30 Day Temperature Departure



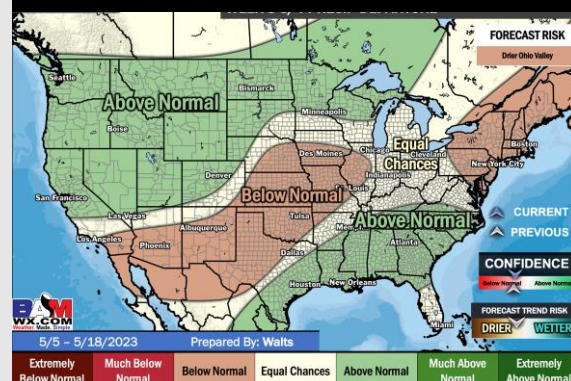
Next 7 Day Total Precipitation



8-14 Day % of Average Precip.



15-30 Day % of Average Precip.



- Multiple shots of precipitation getting into the start of the week with the next chances moving in closer to next weekend. Temps will be below normal for SE TX.
- Expecting near normal precipitation chances and below normal temperatures for the week 2 timeframe.
- Below normal temperatures and above normal chances for precipitation are favored in the week ¾ timeframe.