

# Houston Pilots Forecast Package



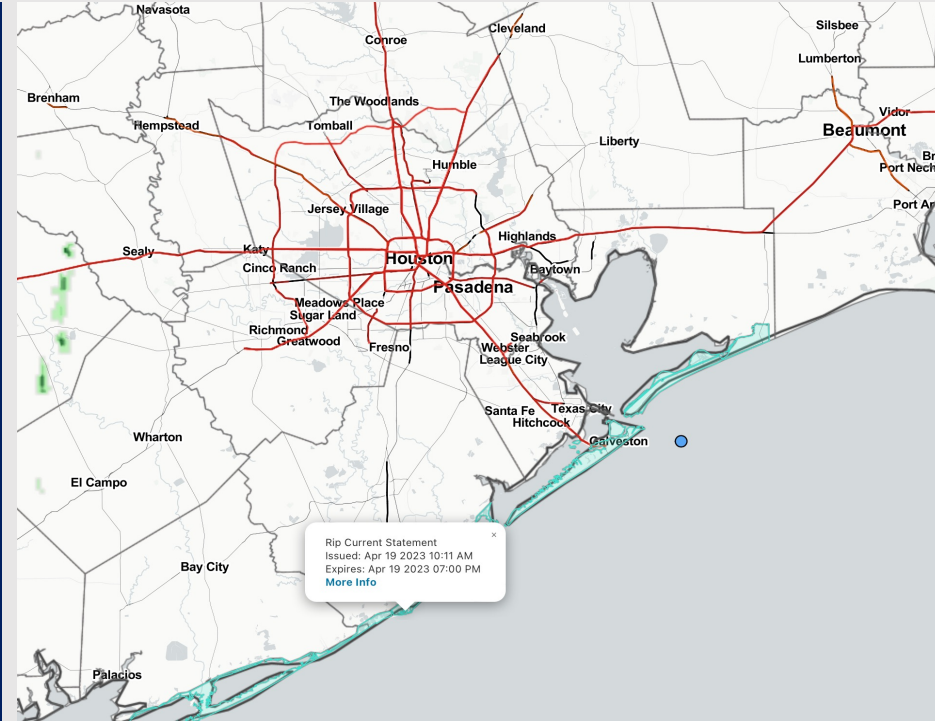
Updated: 12:45 PM CT

Wednesday, April 19, 2023

Forecaster: Alyssa McClung

## Weather Headlines

- Favoring dry conditions for the evening. Thursday looks to bring a better chance at light showers.
- Winds remain elevated at the Boarding Station over the next several days (more info on daily slides).
- While timing needs ironed out, keep an eye out for this ~Saturday for a front to sweep through and sustained winds 25-30 knots possible from the N.
- Fog threats look rather limited moving forward over the next several days.
- Worth keeping eye out towards Friday AM for severe weather potential



**Radar/NWS Alerts: 12:45 PM CT**



As always, please do not hesitate to reach out to us with any forecast questions via the chat option on the Weather Porthole or our on-call number, **(317)-560-8122** press 1 for forecast questions.

# Houston Pilots Extended Range Visibility Report



## Saturday 4/22/23

Reduced visibility does not look to be a concern on Saturday at the moment.



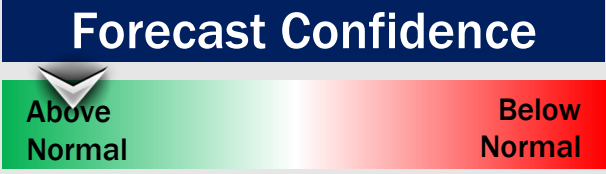
## Monday 4/24/23

Reduced visibility does not look to be a concern for Monday.



## Sunday 4/23/23

Reduced visibility does not look to be a concern for Sunday.



## Chance for Reduced Visibility

Saturday AM	Unlikely
Saturday PM	Unlikely
Sunday AM	Unlikely
Sunday PM	Unlikely
Monday AM	Unlikely
Monday PM	Unlikely

# Houston Pilots Visibility Chart (miles)



## Forecast Confidence



Time	Wed 11am	Wed 12pm	Wed 1pm	Wed 2pm	Wed 3pm	Wed 4pm	Wed 5pm	Wed 6pm	Wed 7pm	Wed 8pm	Wed 9pm	Wed 10pm	Wed 11pm	Thu 12am	Thu 1am	Thu 2am	Thu 3am	Thu 4am	Thu 5am	Thu 6am	Thu 7am	Thu 8am	Thu 9am	Thu 10am	Thu 11am	Thu 12pm	Thu 1pm	Thu 2pm	Thu 3pm	Thu 4pm	Thu 5pm	Thu 6pm	Thu 7pm	Thu 8pm	Thu 9pm	Thu 10pm		
610 Bridge	10	10	10	10	10	10	10	10	10	10	10	10	10	10	10	10	10	10	10	10	10	8	10	10	10	10	10	10	10	10	10	10	10	10	10	9	10	6
Kinder 1	10	10	10	10	10	10	10	10	10	10	10	10	10	10	10	10	10	10	10	10	10	8	10	10	10	10	10	10	10	10	10	10	10	10	10	9	10	7
Greens Bayou	10	10	10	10	10	10	10	10	10	10	10	10	10	10	10	10	10	10	10	10	10	8	10	10	10	10	10	10	10	10	10	10	10	10	10	9	10	8
Shell Crude	10	10	10	10	10	10	10	10	10	10	10	10	10	10	10	10	10	10	10	10	10	8	10	10	10	10	10	10	10	10	10	10	10	10	10	9	10	8
Lynchburg Ferries	10	10	10	10	10	10	10	10	10	10	10	10	10	10	10	10	10	10	10	10	10	8	10	10	10	10	10	10	10	10	10	10	10	10	10	9	10	8
Exxon 3	10	10	10	10	10	10	10	10	10	10	10	10	10	10	10	10	10	10	10	10	10	8	10	10	10	10	10	10	10	10	10	10	10	10	10	9	10	8
Morgans Point	10	10	10	10	10	10	10	10	10	10	10	10	10	10	10	10	10	10	10	10	10	10	10	10	10	10	10	10	10	10	10	10	10	10	10	9	10	8
75/76	10	10	10	10	10	10	10	10	10	10	10	10	10	10	10	10	10	10	10	10	10	10	10	10	10	10	10	10	10	10	10	10	10	10	9	10	8	
63/64	10	10	10	10	10	10	10	10	10	10	10	10	10	10	10	10	10	10	10	10	10	10	10	10	10	10	10	10	10	10	10	10	10	10	10	9	10	8
51/52	10	10	10	10	10	10	10	10	10	10	10	10	10	10	10	10	10	10	10	10	10	10	10	10	10	10	10	10	10	10	10	10	10	10	10	9	10	8
37/38	10	10	10	10	10	10	10	10	10	10	10	10	10	10	10	10	10	10	10	10	10	10	10	10	10	10	10	10	10	10	10	10	10	10	10	9	9	8
25/26	10	10	10	10	10	10	10	10	10	10	10	10	10	10	10	10	10	10	10	10	10	10	10	10	10	10	10	10	10	10	10	10	10	10	10	9	9	8
11/12	10	10	10	10	10	10	10	10	10	10	10	10	10	10	10	10	10	10	10	10	10	10	10	10	10	10	10	10	10	10	10	10	10	10	10	9	9	8
1 & 2 Bravo	10	10	10	10	10	10	10	10	10	10	10	10	10	10	10	10	10	10	10	10	10	10	10	9	10	10	10	10	10	10	10	9	9	9	9	8	8	

**NOTE: This is automated data that may/may not agree with the official BAM thinking that's found on the daily slides or special visibility report slides. This data should be used as a guide only**

# Houston Pilots Wind Chart



## Forecast Confidence



## Example

Sustained wind 13 Knots  
Gusts 18 Knots  
Wind from the N

WS: 13  
G:18  
N

Time Knots	Wed 11am	Wed 12pm	Wed 1pm	Wed 2pm	Wed 3pm	Wed 4pm	Wed 5pm	Wed 6pm	Wed 7pm	Wed 8pm	Wed 9pm	Wed 10pm	Wed 11pm	Thu 12am	Thu 1am	Thu 2am	Thu 3am	Thu 4am	Thu 5am	Thu 6am	Thu 7am	Thu 8am	Thu 9am	Thu 10am	Thu 11am	Thu 12pm	Thu 1pm	Thu 2pm	Thu 3pm	Thu 4pm	Thu 5pm	Thu 6pm	Thu 7pm	Thu 8pm	Thu 9pm	Thu 10pm			
610 Bridge	12	13	13	12	13	12	12	12	10	9	7	6	6	6	7	10	9	9	9	8	8	10	10	10	11	12	12	12	13	13	12	13	13	12	13	13	12	12	12
Kinder 1	12	13	13	13	13	12	12	12	10	8	7	6	6	6	7	10	9	9	9	9	8	10	10	10	11	12	13	13	13	13	13	13	13	12	12	12	12	12	
Greens Bayou	11	13	13	13	13	13	12	12	10	8	7	6	6	6	6	10	9	9	9	9	8	9	10	10	12	13	13	13	14	13	13	13	13	13	12	12	12	12	
Shell Crude	12	13	13	13	13	13	13	12	11	9	7	6	7	6	6	10	10	9	9	9	8	10	10	11	12	13	13	13	13	14	13	13	14	13	12	12	12	12	
Lynchburg Ferries	11	13	13	13	14	13	13	13	11	9	7	6	7	6	6	11	10	10	9	9	9	10	10	11	12	13	14	14	15	14	14	14	14	14	13	12	12	12	
Exxon 3	12	13	14	14	14	14	13	13	11	9	8	8	8	8	8	11	11	11	10	10	10	10	10	11	12	13	14	14	14	15	14	15	14	14	13	13	12	12	
Morgans Point	12	14	15	15	15	15	14	13	12	11	12	12	12	12	13	13	13	13	13	12	11	12	13	13	14	14	15	16	16	16	16	16	16	15	15	14	14	13	
75/76	13	15	16	15	16	16	16	15	15	15	15	16	17	17	16	16	16	16	16	15	15	15	15	16	15	15	15	16	16	16	16	16	16	16	16	16	16	15	
63/64	14	15	16	15	16	16	15	15	14	15	16	16	17	17	16	17	17	17	17	16	16	16	16	16	16	16	16	16	16	16	16	16	16	16	16	16	16	16	
51/52	13	14	15	14	15	15	15	14	14	15	16	16	17	17	16	17	16	16	16	16	15	15	15	16	16	16	15	14	15	15	15	15	15	15	15	15	15	15	
37/38	12	13	14	13	13	13	13	13	13	14	15	15	16	16	16	15	16	15	15	15	15	14	14	15	15	15	15	15	14	14	14	14	14	14	14	14	14	13	
25/26	12	12	13	12	12	12	12	12	12	13	14	14	14	14	13	14	14	14	13	13	13	13	13	13	14	13	14	13	13	13	13	13	13	13	13	13	13	12	
11/12	11	12	12	11	12	12	12	12	12	14	14	14	14	14	14	14	14	13	13	13	13	13	12	13	13	13	13	13	13	13	13	13	13	13	12	12	13	13	
1 & 2 Bravo	10	11	11	10	10	10	11	12	13	14	14	15	15	14	16	16	16	15	15	15	14	14	14	15	13	14	12	12	12	12	12	13	13	14	15	15	15		

NOTE: This is automated data that may/may not agree with the official BAM thinking that's found on the daily slides. This data should be used as a guide only

## Forecast Discussion

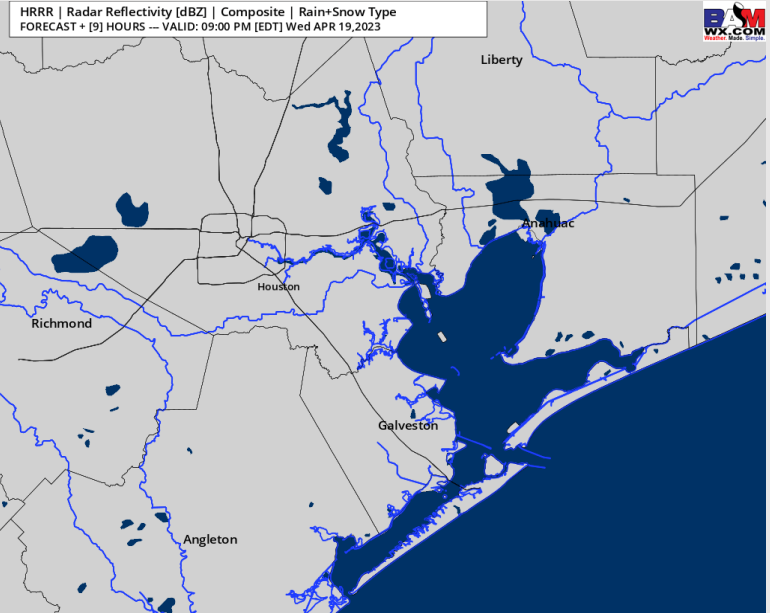
**Precip:** Anticipating dry conditions throughout the rest of the day today.

**Wind:** Winds out of the 12 – 17 kts across all stations, with a few pockets reaching up to 19 kts towards 51/52 to 75/76. Towards 8 PM winds will begin to calm north of Morgan’s point to 5 – 10 kts, but remain elevated south of Morgan’s Point at 12 – 17 kts. Gusts of 25 kts for stations south of Morgan’s Point cannot be ruled out.

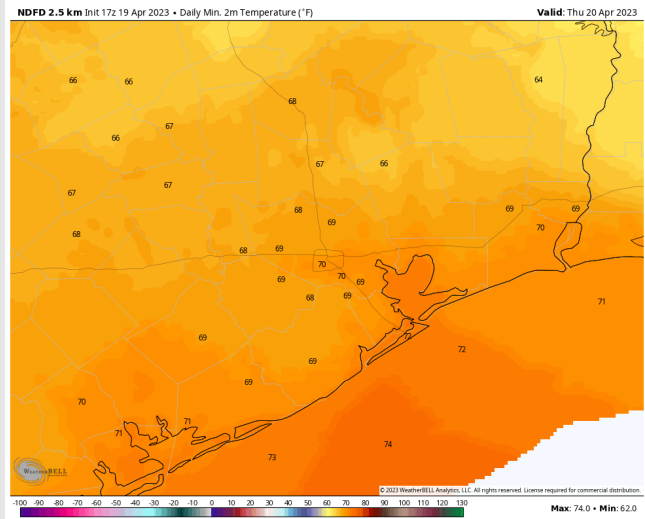
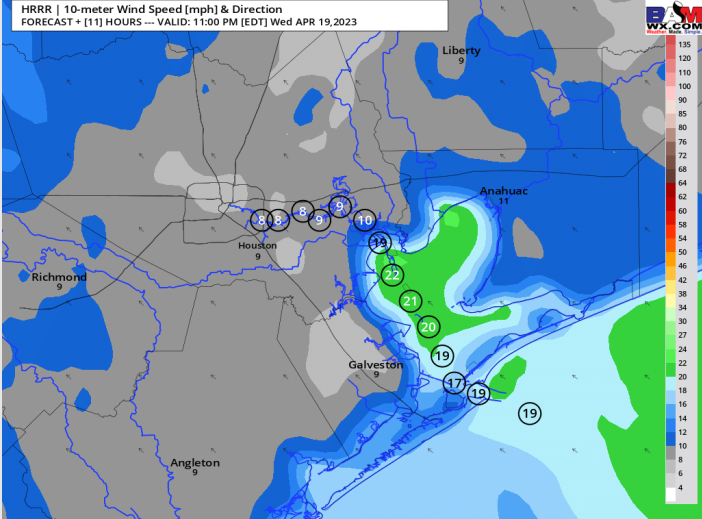
**Temps:** Low temperatures at Thursday morning will be in the low 70s F at the Boarding Station and in the upper 60s F / near 70 F at all other stations.

**Visibility:** No reduced visibility concerns expected at this time.

## Precip Image: 8 PM CT



Wind Speed:  
10 PM CT



Low Temps  
Thursday AM

# Houston Pilots: Thu. 4/20/2023



## Forecast Discussion

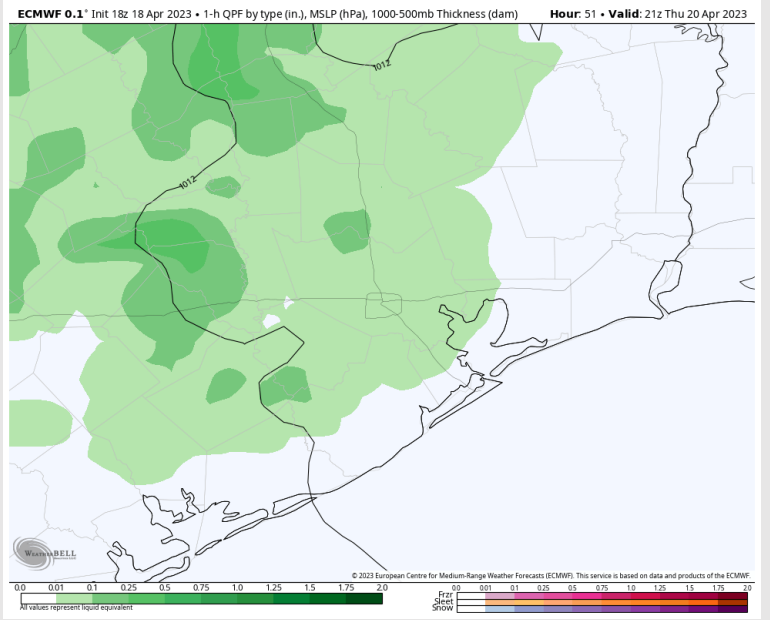
**Precip:** Favoring dry conditions for the majority of the day Thursday. After 2 PM moisture from the W/NW will try to work into the area and bring precipitation chances to 20% the bulk of precipitation is favored to stay off to the northwest. Chances will slightly increase to 40% during the 7 PM – 10 PM timeframe.

**Wind:** Sustained SE winds will continue Thursday. AM winds north of Morgan's point will start at 6 – 10 kts, and S of Morgan's Point at 9 – 15 kts. Around 10 AM winds across all stations will be 10 – 16 kts and remain as such for the rest of the day, with the exception for winds calming slightly north of Morgan's Point towards 7 PM to 7 – 12 kts. Wind gusts of 22 – 25 kts will be possible across all stations after 10 AM as well.

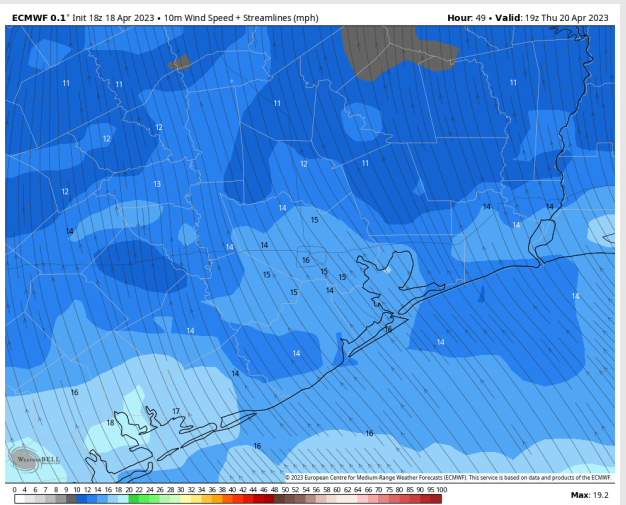
**Temps:** High temperatures Thursday will be in the lower 80s F for stations north of Morgan's Point and in the upper 70s for stations south.

**Visibility:** No visibility issues anticipated.

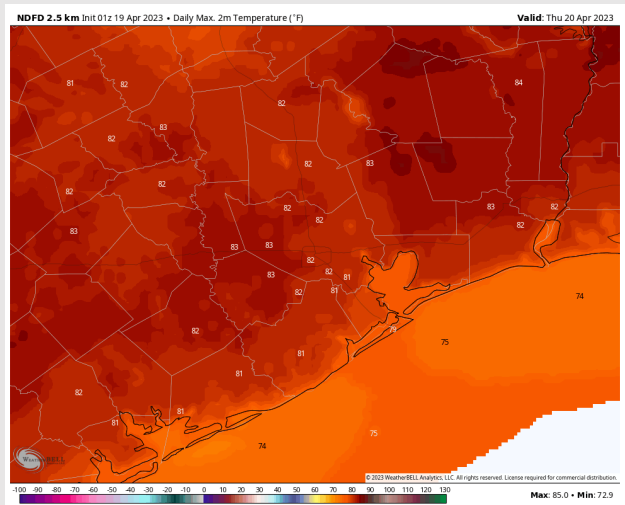
## Precip Image: 4 PM CT



Wind Speed:  
2 PM CT



High Temps  
Thursday



# Houston Pilots: Fri. 4/21/2023



## Forecast Discussion

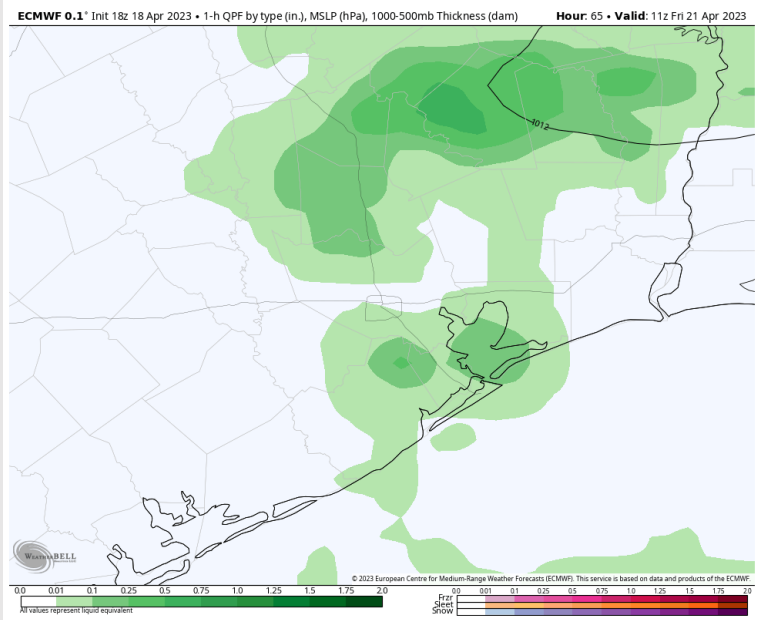
**Precip:** Favoring a 50-60% chance for showers and thunderstorms through the afternoon on Friday then after 3 PM, favoring chances to drop to 10% for an isolated shower until around 7 PM. Then after 7 PM, favoring dry conditions for the rest of the day. A few thunderstorms do hold the potential to be severe.

**Wind:** Sustained winds will start out of the SE at the beginning of the day Friday and gradually shift to out of the SW by 9 AM. Then after 9 AM, winds will continue to gradually shift to out of the N by the end of the night. Winds N of Morgan's Point will be at 3-7 kts throughout the morning. Then around 9-10 AM, winds N of Morgan's Point will pick back up to 5-10 kts for the rest of the day. Winds S of Morgan's Point will be at 10-16 kts throughout the morning. Then, after 1 PM, winds S of Morgan's Point will die down to 3-9 kts for the rest of the day.

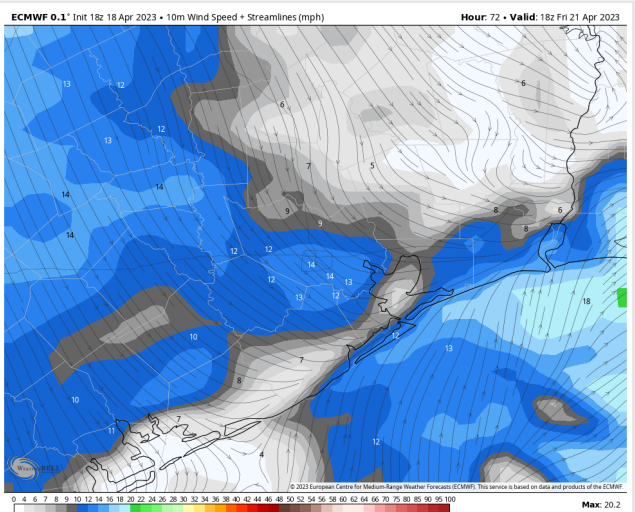
**Temps:** High temperatures Friday will be in the mid to upper 70s F for stations S of Morgan's Point and in the low to mid 80s for stations N of Morgan's Point.

**Visibility:** Not anticipating visibility concerns at this time.

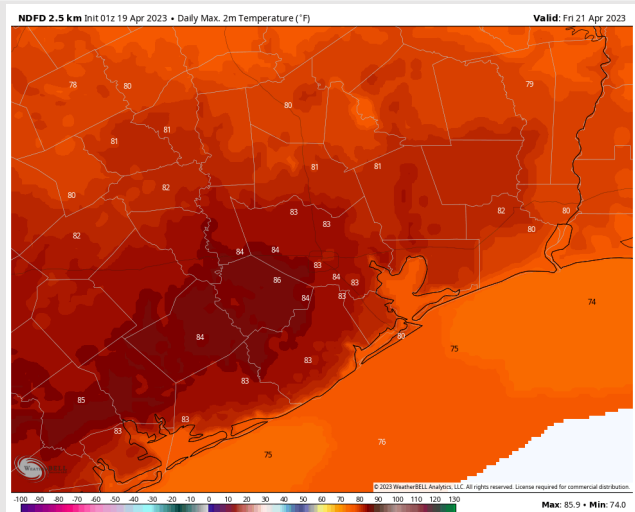
## Precip Image: 6 AM CT



Wind Speed:  
7 PM CT

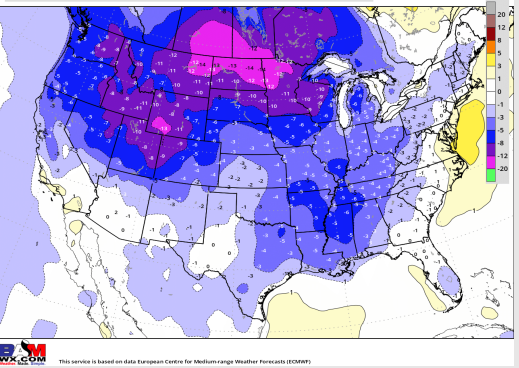


High Temps  
Friday

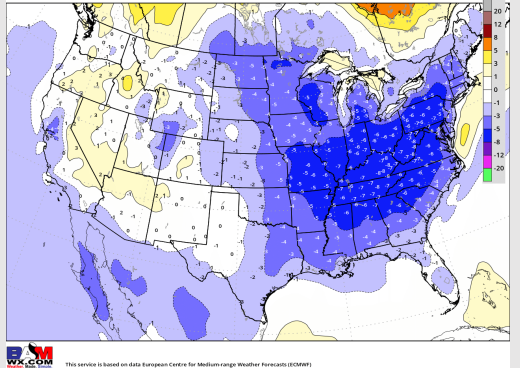


# Houston Pilots: 4/19/23

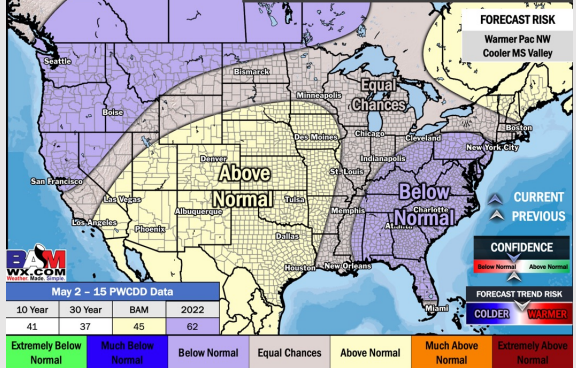
**Next 7 Day Temperature Departure**



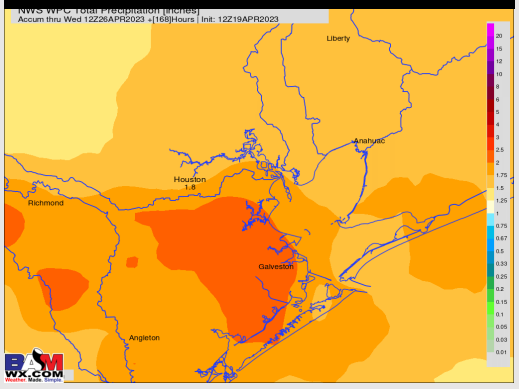
**8-14 Day Temperature Departure**



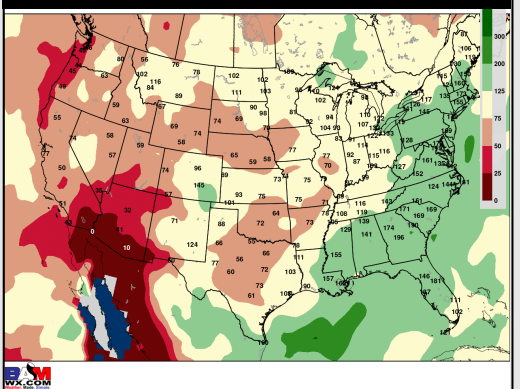
**15-30 Day Temperature Departure**



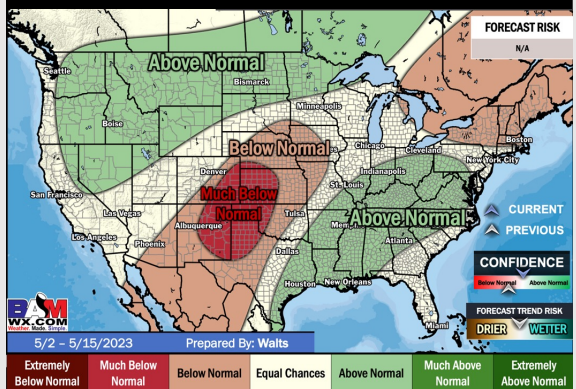
**Next 7 Day Total Precipitation**



**8-14 Day % of Average Precip.**



**15-30 Day % of Average Precip.**



- Expecting a quieter stretch of weather to start the week before rain chances pick up Thursday/Friday and beyond. Temps will be near to below normal for SE TX.
- Expecting near normal precipitation chances and below normal temperatures for the week 2 timeframe.
- Above normal temperatures and above normal chances for precipitation are favored in the week 3/4 timeframe.