

Houston Pilots Forecast Package

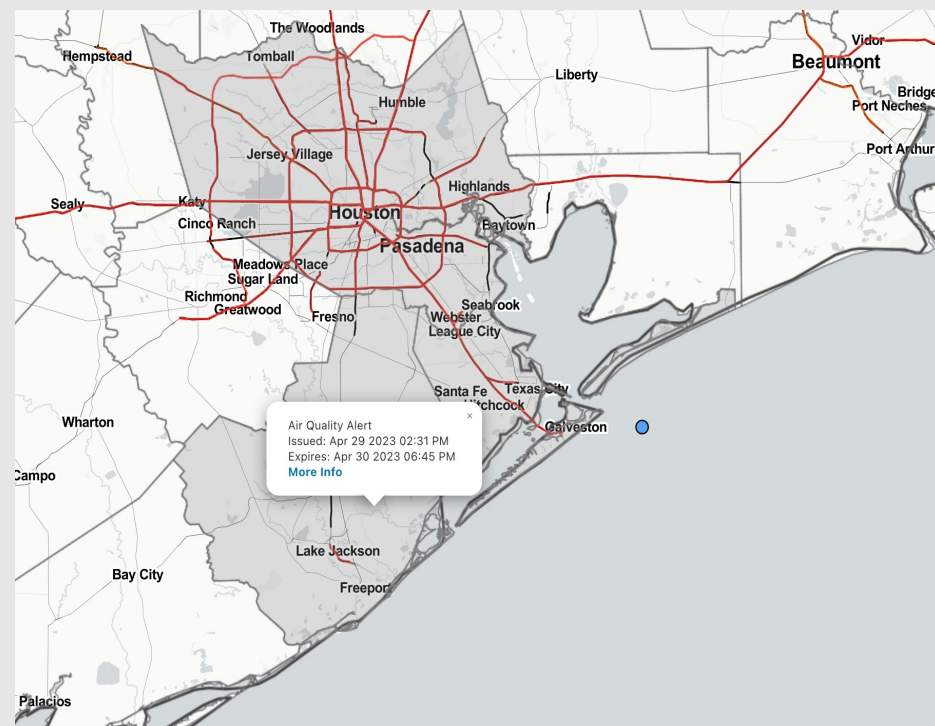


Updated: 12:10 PM CT
Sunday, April 30, 2023

Forecaster: Josh Collins

Weather Headlines

- Favoring a drier week ahead.
- Winds will be generally calm over the next few days with occasional gusts up to 20-25 kts.
- Threats for sea fog formation look very low with no strong signals over the next several days.



Radar/NWS Alerts: 12:10 PM CT



As always, please do not hesitate to reach out to us with any forecast questions via the chat option on the Weather Porthole or our on-call number, **(317)-560-8122** press 1 for forecast questions.

Houston Pilots Extended Range Visibility Report



Wednesday 5/3/23

Reduced visibility does not look to be a concern for Wednesday.

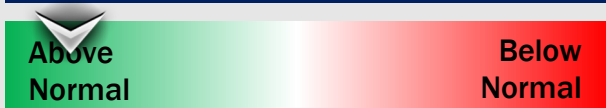
Forecast Confidence



Friday 5/5/23

Reduced visibility does not look to be a concern for Friday.

Forecast Confidence



Thursday 5/4/23

Reduced visibility does not look to be a concern for Thursday.

Forecast Confidence



Chance for Reduced Visibility

Wednesday AM	Unlikely
Wednesday PM	Unlikely
Thursday AM	Unlikely
Thursday PM	Unlikely
Friday AM	Unlikely
Friday PM	Unlikely

Houston Pilots Visibility Chart (miles)



Time	Sun 11am	Sun 12pm	Sun 1pm	Sun 2pm	Sun 3pm	Sun 4pm	Sun 5pm	Sun 6pm	Sun 7pm	Sun 8pm	Sun 9pm	Sun 10pm	Sun 11pm	Mon 12am	Mon 1am	Mon 2am	Mon 3am	Mon 4am	Mon 5am	Mon 6am	Mon 7am	Mon 8am	Mon 9am	Mon 10am	Mon 11am	Mon 12pm	Mon 1pm	Mon 2pm	Mon 3pm	Mon 4pm	Mon 5pm	Mon 6pm	Mon 7pm	Mon 8pm	Mon 9pm	Mon 10pm
610 Bridge	10	10	10	10	10	10	10	10	10	10	10	10	10	10	10	10	10	10	10	10	10	6	10	10	10	10	10	10	10	10	10	10	10	10	10	10
Kinder 1	10	10	10	10	10	10	10	10	10	10	10	10	10	10	10	10	10	10	10	10	10	7	10	10	10	10	10	10	10	10	10	10	10	10	10	10
Greens Bayou	10	10	10	10	10	10	10	10	10	10	10	10	10	10	10	10	10	10	10	10	10	7	10	10	10	10	10	10	10	10	10	10	10	10	10	10
Shell Crude	10	10	10	10	10	10	10	10	10	10	10	10	10	10	10	10	10	10	10	10	10	9	10	10	10	10	10	10	10	10	10	10	10	10	10	10
Lynchburg Ferries	10	10	10	10	10	10	10	10	10	10	10	10	10	10	10	10	10	10	10	10	10	9	10	10	10	10	10	10	10	10	10	10	10	10	10	10
Exxon 3	10	10	10	10	10	10	10	10	10	10	10	10	10	10	10	10	10	10	10	10	10	10	10	10	10	10	10	10	10	10	10	10	10	10	10	10
Morgans Point	10	10	10	10	10	10	10	10	10	10	10	10	10	10	10	10	10	10	10	10	10	10	10	10	10	10	10	10	10	10	10	10	10	10	10	10
75/76	10	10	10	10	10	10	10	10	10	10	10	10	10	10	10	10	10	10	10	10	10	10	10	10	10	10	10	10	10	10	10	10	10	10	10	10
63/64	10	10	10	10	10	10	10	10	10	10	10	10	10	10	10	10	10	10	10	10	10	10	10	10	10	10	10	10	10	10	10	10	10	10	10	10
51/52	10	10	10	10	10	10	10	10	10	10	10	10	10	10	10	10	10	10	10	10	10	10	10	10	10	10	10	10	10	10	10	10	10	10	10	10
37/38	10	10	10	10	10	10	10	10	10	10	10	10	10	10	10	10	10	10	10	10	10	10	10	10	10	10	10	10	10	10	10	10	10	10	10	10
25/26	10	10	10	10	10	10	10	10	10	10	10	10	10	10	10	10	10	10	10	10	10	10	10	10	10	10	10	10	10	10	10	10	10	10	10	10
11/12	10	10	10	10	10	10	10	10	10	10	10	10	10	10	10	10	10	10	10	10	10	10	10	10	10	10	10	10	10	10	10	10	10	10	10	10
1 & 2 Bravo	10	10	10	10	10	10	10	10	10	10	10	10	10	10	10	10	10	10	10	10	10	10	10	10	10	10	10	10	10	10	10	10	10	10	10	10

NOTE: This is automated data that may/may not agree with the official BAM thinking that’s found on the daily slides or special visibility report slides. This data should be used as a guide only

Houston Pilots Wind Chart



Forecast Confidence

Above Normal

Below Normal

Sustained wind 13 Knots

Gusts 18 Knots

Wind from the N

Example

WS: 13
G:18
N

Time Knots	Sun 11am	Sun 12pm	Sun 1pm	Sun 2pm	Sun 3pm	Sun 4pm	Sun 5pm	Sun 6pm	Sun 7pm	Sun 8pm	Sun 9pm	Sun 10pm	Sun 11pm	Mon 12am	Mon 1am	Mon 2am	Mon 3am	Mon 4am	Mon 5am	Mon 6am	Mon 7am	Mon 8am	Mon 9am	Mon 10am	Mon 11am	Mon 12pm	Mon 1pm	Mon 2pm	Mon 3pm	Mon 4pm	Mon 5pm	Mon 6pm	Mon 7pm	Mon 8pm	Mon 9pm	Mon 10pm			
610 Bridge	5 7	5 7	5 8	6 9	6 9	6 8	6 8	5 7	5 8	3 6	3 7	5 13	6 13	6 14	5 13	7 11	6 9	5 8	4 5	3 5	3 5	3 5	3 5	5 8	5 8	5 8	5 8	5 8	6 9	7 10	8 10	9 10	10 11	10 11	9 11	8 11	6 10		
	WNW	WNW	WNW	WNW	WNW	W	W	WSW	WSW	SW	S	SSW	SSW	SSW	S	S	S	S	SSE	NE	NE	NE	ENE	E	ESE	SE	SSE	SSE	SSE	SSE	SSE	SSE	SSE	SSE	SSE	SSE			
Kinder 1	6 8	5 7	5 8	6 9	6 9	6 8	5 7	4 7	4 8	3 6	3 6	5 12	6 13	6 14	5 13	6 11	5 9	4 8	3 7	3 5	3 5	3 5	5 8	5 8	5 8	5 8	5 8	6 9	7 10	8 10	9 11	10 11	10 11	9 11	8 10	6 9			
	WNW	WNW	WNW	WNW	WNW	W	W	SW	SW	SSW	SSE	SSW	SSW	SSW	S	S	S	SSE	NE	NE	ENE	ENE	E	ESE	SE	SSE	SSE	SSE	SSE	SSE	SSE	SSE	SSE	SSE	SSE	SSE	SSE		
Greens Bayou	6 8	5 7	5 8	6 9	6 9	6 8	5 7	4 7	4 8	4 7	4 9	5 12	6 13	6 14	5 13	6 11	5 9	4 8	3 7	3 5	3 5	3 5	5 8	5 8	5 8	5 8	5 8	6 9	7 10	8 10	9 11	10 11	10 11	9 11	8 10	6 9			
	WNW	WNW	W	WNW	WNW	W	WSW	S	S	SE	SSE	SSW	SSW	SSW	S	S	S	SSE	NE	NE	ENE	ENE	E	ESE	SE	SE	SE	SE	SE	SE	SE	SE	SSE	SSE	SSE	SSE	SSE		
Shell Crude	6 8	5 7	5 8	5 9	5 9	5 8	4 7	5 9	5 9	5 9	5 12	6 13	6 14	6 14	5 14	7 11	6 9	4 8	4 7	4 6	4 5	4 5	4 5	5 8	5 8	5 8	5 8	6 9	7 9	9 11	10 12	10 12	10 12	9 11	8 10	7 9	6 9		
	WNW	WNW	WNW	WNW	WNW	WSW	SSW	SSE	SSE	SE	SSE	SSW	SSW	SSW	SSW	S	S	SSE	NE	NE	NE	ENE	E	ESE	SE	SE	SE	SE	SE	SE	SE	SSE	SSE	SSE	SSE	SSE	SSE		
Lynchburg Ferries	6 8	5 7	4 7	4 8	5 8	4 8	5 8	7 11	6 12	5 11	5 13	6 14	6 14	5 15	7 14	6 11	5 9	4 8	5 7	5 6	5 4	5 4	4 5	5 5	5 5	5 5	6 7	7 9	9 11	10 12	11 12	11 12	10 12	9 11	8 10	7 9	6 9		
	WNW	WNW	W	W	W	WSW	S	SE	SSE	SSE	SSE	SSW	SSW	SSW	SSW	SSW	S	SSE	NE	NE	ENE	ENE	E	ESE	SE	SE	SE	SE	SE	SE	SE	SSE	SSE	SSE	SSE	SSE	SSE		
Exxon 3	5 8	5 7	4 7	3 8	4 8	5 8	7 9	8 13	7 13	6 14	6 14	6 15	6 16	7 15	6 15	8 11	7 9	6 8	5 7	5 7	5 6	4 6	4 5	5 8	5 8	5 8	6 9	7 10	8 12	9 12	10 13	11 13	11 13	9 12	8 11	7 9	6 9		
	WNW	WNW	WNW	W	SW	S	SE	SSE	SSE	SSE	S	SSW	SSW	SSW	SSW	SSW	SSW	SSE	E	NE	ENE	ENE	E	ESE	SE	SE	SE	SE	SE	SE	SE	SSE	SSE	SSE	SSE	SSE	SSE		
Morgans Point	5 8	4 7	3 7	4 8	5 8	7 9	10 14	9 15	9 15	9 16	10 16	10 17	10 17	10 17	10 12	8 11	7 10	6 8	5 7	5 5	5 5	5 5	6 7	6 8	7 9	8 10	9 11	10 13	11 13	12 14	12 14	12 14	11 14	10 13	9 12	8 10	7 9		
	WNW	NW	W	SSW	SSE	SE	SE	SSE	S	S	SSW	SSW	SSW	SSW	SSW	SSW	SSW	S	SSE	ENE	NE	ENE	E	ESE	SE	SE	SE	SE	SE	SE	SE	SSE	SSE	SSE	SSE	SSE	S		
75/76	6 8	3 7	2 7	6 8	7 8	8 10	12 13	12 15	13 17	13 19	13 21	14 20	14 20	14 20	13 14	11 13	10 8	7 7	6 7	6 7	6 7	6 7	7 8	7 9	7 10	8 11	9 12	10 14	11 15	12 16	13 16	14 16	14 15	14 16	12 15	11 14	10 12	9 12	
	WNW	WNW	SSE	ESE	ESE	SE	SE	S	S	S	SSW	SSW	SSW	SSW	SSW	SSW	SSW	SSW	SSW	SSW	SE	NE	ENE	E	ESE	SE	SE	SE	SE	SE	SSE	SSE	SSE	SSE	SSE	S	S	S	
63/64	7 9	3 7	1 7	5 8	6 7	8 9	11 14	13 16	13 18	14 21	14 21	15 20	15 20	15 22	16 15	13 12	12 9	7 8	7 7	6 6	6 6	6 7	6 7	7 8	7 9	8 10	9 12	10 13	11 14	12 15	13 16	14 16	14 15	14 16	12 15	11 14	10 12	9 12	
	WNW	WNW	SE	E	ESE	SE	SSE	S	S	SSW	SSW	SSW	SSW	SSW	SSW	SSW	SSW	SSW	SSW	SSW	ENE	ENE	E	E	ESE	SE	SE	SE	SE	SE	SSE	SSE	SSE	SSE	SSE	S	S	S	
51/52	7 9	4 7	1 7	4 7	6 7	8 10	12 14	14 16	14 18	15 21	15 21	15 20	14 20	15 22	13 14	12 11	10 8	7 8	6 7	6 8	6 8	6 8	6 8	7 9	7 10	8 11	9 12	10 13	11 14	12 14	13 14	13 15	13 16	13 15	12 14	11 13	10 12	9 12	
	WNW	WNW	SW	ESE	SE	SSE	S	S	S	SSW	SSW	SSW	SSW	SSW	SSW	SSW	SSW	SSW	SSW	S	SE	ESE	ESE	ESE	SE	SSE	SSE	SSE	SSE	SSE	SSE	SSE	SSE	SSE	SSE	S	S	S	
37/38	8 9	5 7	2 7	3 7	6 7	8 10	12 14	13 16	13 18	14 20	14 20	14 20	14 19	15 21	13 15	12 13	11 10	7 9	6 8	7 9	7 9	7 8	7 9	8 10	9 11	10 12	11 13	12 13	13 13	12 13	12 13	12 13	12 13	11 12	10 11	9 12	8 11	7 10	6 9
	WNW	WNW	WNW	SE	SSE	S	S	S	SSW	SSW	SSW	SSW	SSW	SSW	SSW	SSW	SSW	SSW	SSW	SSW	S	S	SE	SSE	SE	SSE	SSE	SSE	SSE	SSE	SSE	SSE	SSE	SSE	SSE	S	S	S	
25/26	8 9	5 7	3 6	2 6	6 7	9 11	11 16	12 17	12 19	12 19	12 19	12 19	12 19	13 20	12 13	11 10	10 9	7 6	6 9	6 9	6 9	7 9	7 9	8 10	9 11	10 12	11 12	12 12	11 11	12 12	12 11	10 11	10 11	9 11	9 11	8 10	7 10	6 9	
	WNW	WNW	W	S	SSE	S	S	SSW	SSW	SSW	SSW	SSW	SSW	SSW	SSW	SSW	SSW	SSW	SSW	SSW	S	SSE	SSE	SSE	SSE	SSE	SSE	SSE	SSE	SSE	SSE	SSE	SSE	SSE	SSE	SSE	S	SSE	S
11/12	8 9	6 7	4 6	4 6	8 11	10 13	12 16	12 17	12 19	12 19	13 19	13 19	13 19	13 20	13 13	12 11	10 9	8 7	7 7	7 7	7 7	7 8	8 9	9 10	10 11	11 11	12 12	11 11	12 12	11 11	11 11	11 11	10 11	9 11	9 11	8 10	7 11	6 10	
	WNW	WNW	W	SSW	S	S	S	SSW	SSW	SSW	SSW	SSW	SSW	SSW	SSW	SSW	SSW	SSW	SSW	SSW	S	SSE	SSE	SSE	SSE	SSE	SSE	SSE	SSE	SSE	SSE	SSE	SSE	SSE	SSE	S	SSE	S	S
1 & 2 Bravo	10 WNW	7 W	5 WSW	5 SSW	7 SSW	11 SSW	12 S	13 SSW	13 SSW	15 SSW	15 SSW	15 SSW	15 SSW	15 SSW	16 SSW	15 SSW	14 SSW	12 SSW	11 SSW	10 SSW	9 SSW	8 S	8 S	7 SSE	8 SSE	9 SSE	9 SSE	9 SSE	9 SSE	9 SSE	10 SSE	10 SSE	10 SSE	10 SSE	10 S	10 S	11 S	11 S	

NOTE: This is automated data that may/may not agree with the official BAM thinking that's found on the daily slides or special visibility report slides. This data should be used as a guide only

Houston Pilots: Sun. 4/30/2023

Forecast Discussion

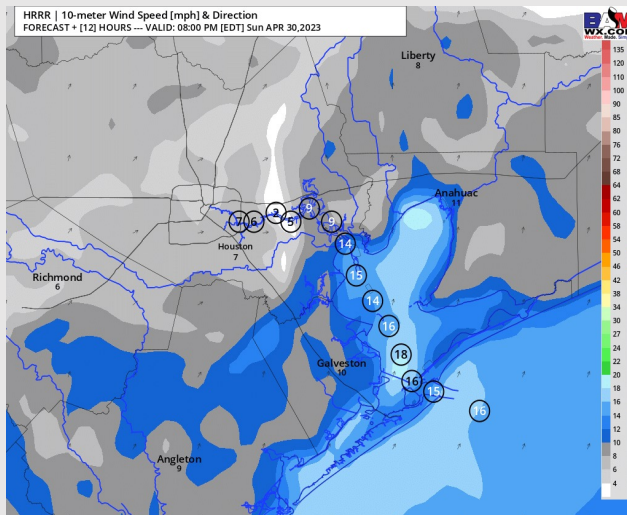
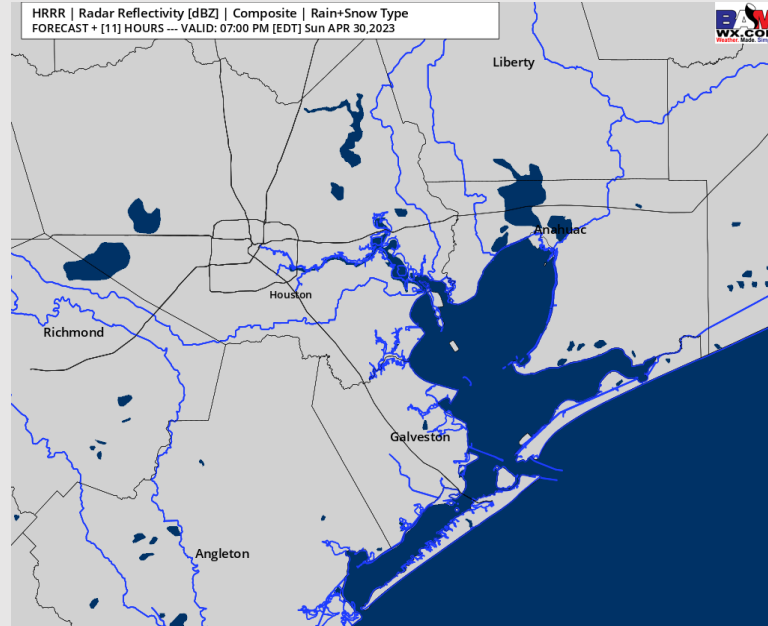
Precip: Favoring dry conditions for the rest of today.

Wind: Sustained winds gradually veer to out of the SW by 2 PM local time. From now through 3 PM local time, winds will be 1-7 kts across all stations. Then after 3 PM, favoring winds north of Morgan's Point to slightly pick up to 5-10 kts while winds south of Morgan's Point will pick up to 13-18 kts.

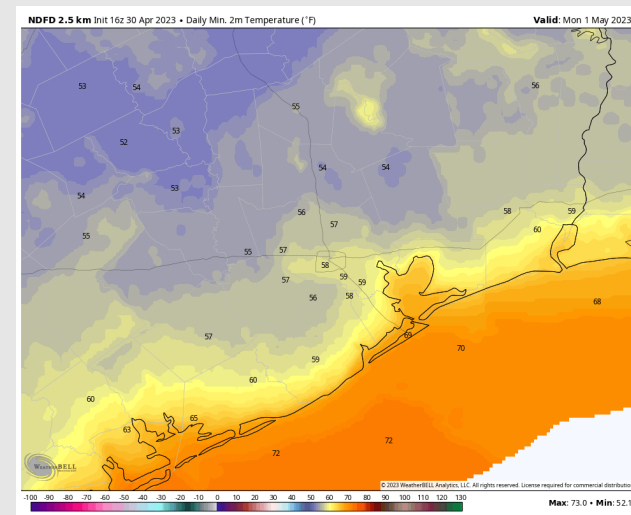
Temps: Low temperatures Monday AM will be in the upper 60s F to near 70 F S of Morgan's Point and in the upper 50s F N of Morgan's Point.

Visibility: Not anticipating any visibility concerns.

Precip Image: 6 PM CT



Wind Speed:
7 PM CT



Low Temps
MON AM

Houston Pilots: Mon. 5/1/2023

Forecast Discussion

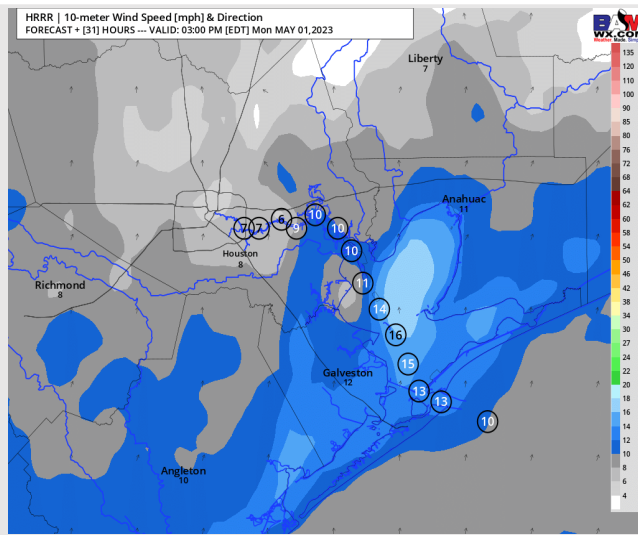
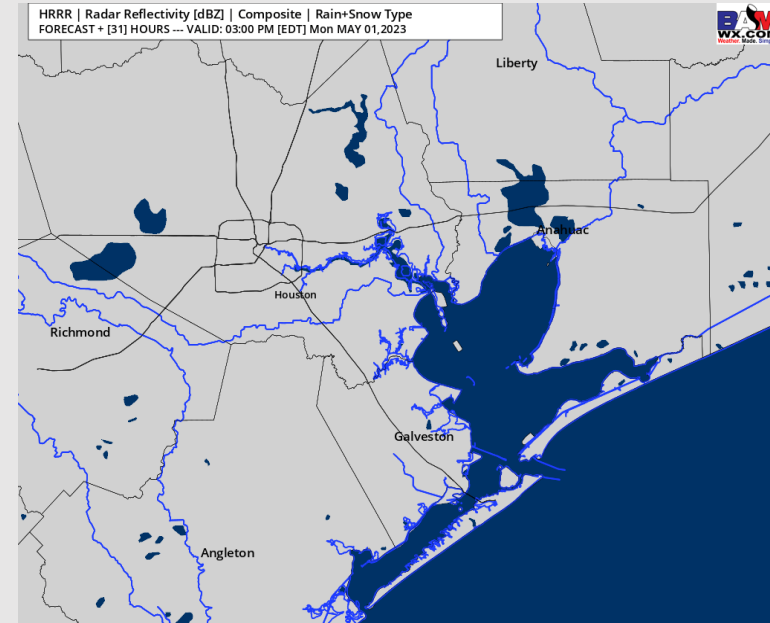
Precip: Favoring dry conditions throughout the day Monday

Wind: Winds will begin out of the SSW Monday then then will likely become variable between 9 AM and 12 PM. After noon, winds will shift out of the SSE. Winds N of Morgan's Point will be 2- 7 kts until around 2 PM local time, where they will pick up to 8-14 kts for the rest of the day. Winds S of Morgan's Point will be at 12-18 kts through 7 AM. Then after 7 AM favoring winds to decrease to 2-7 kts until around 12 PM, then after 12 PM, winds S of Morgan's Point will be 8-14 kts for the rest of the day. Gusts up to 20 kts will be possible.

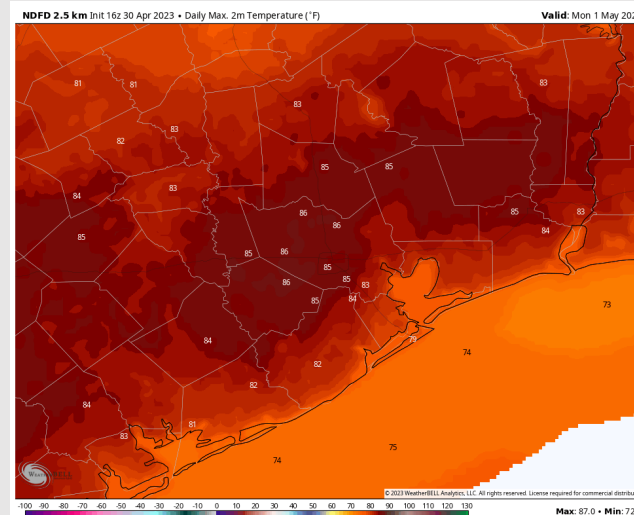
Temps: High temperatures Monday in the mid 70s F at the Boarding Station in the upper 70s F for all other stations S of Morgan's Point, and in the mid 80s F for station N of Morgan's Point.

Visibility: Not anticipating any reduced visibility due to fog.

Precip Image: 2 PM CT



Wind Speed:
2 PM CT



High Temps
Monday

Houston Pilots: Tue. 5/2/2023

Forecast Discussion

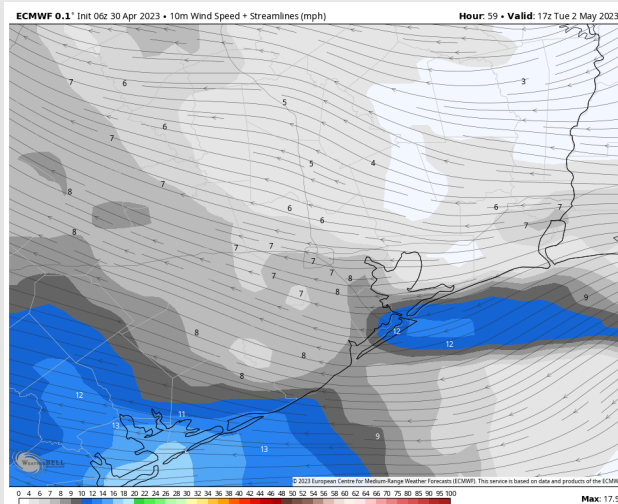
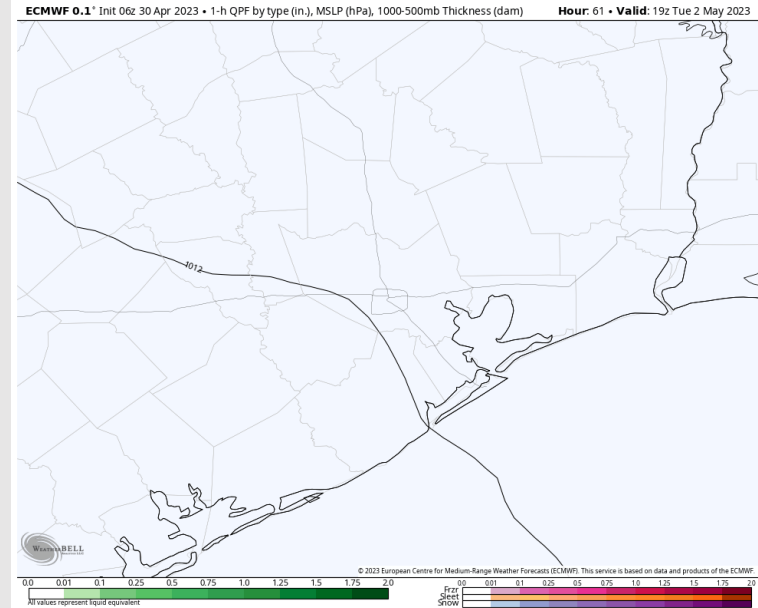
Precip: Favoring dry conditions throughout the day Tuesday.

Wind: Winds will begin out of the SSE Tuesday morning at at 2-8 kts throughout the morning Tuesday. Throughout the day winds will gradually shift out of the E/SE. After 12 PM, winds S of Morgan's Point will again increase to 8 - 13 kts through 7 PM, before calming back to 2-8 kts for the rest of the evening. Gusts up to 23 kts will be possible into the early PM Tuesday.

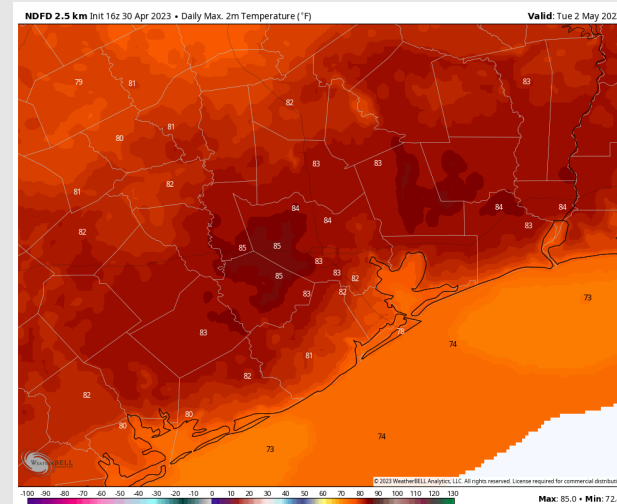
Temps: High temperatures Tuesday in the mid 70s F at the Boarding Station and in the low 80s F at all other stations.

Visibility: Not anticipating any visibility concerns at this time.

Precip Image: 2 PM CT



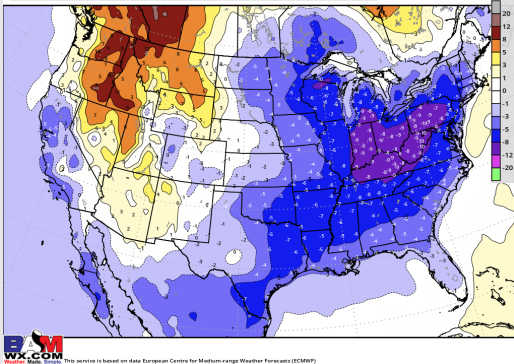
Wind Speed:
12 PM CT



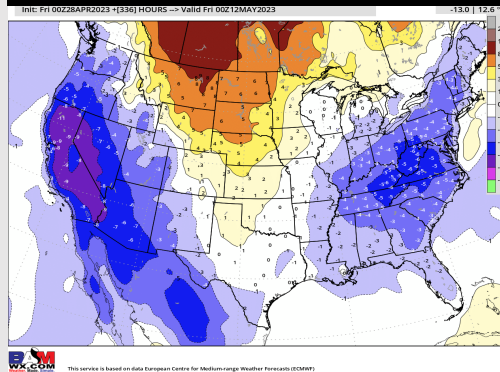
High Temps
Tuesday

Houston Pilots: 4/30/23

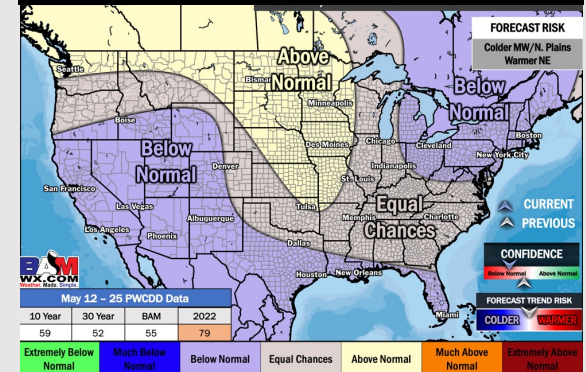
Next 7 Day Temperature Departure



8-14 Day Temperature Departure



15-30 Day Temperature Departure



Next 7 Day Total Precipitation

