

Houston Pilots Forecast Package

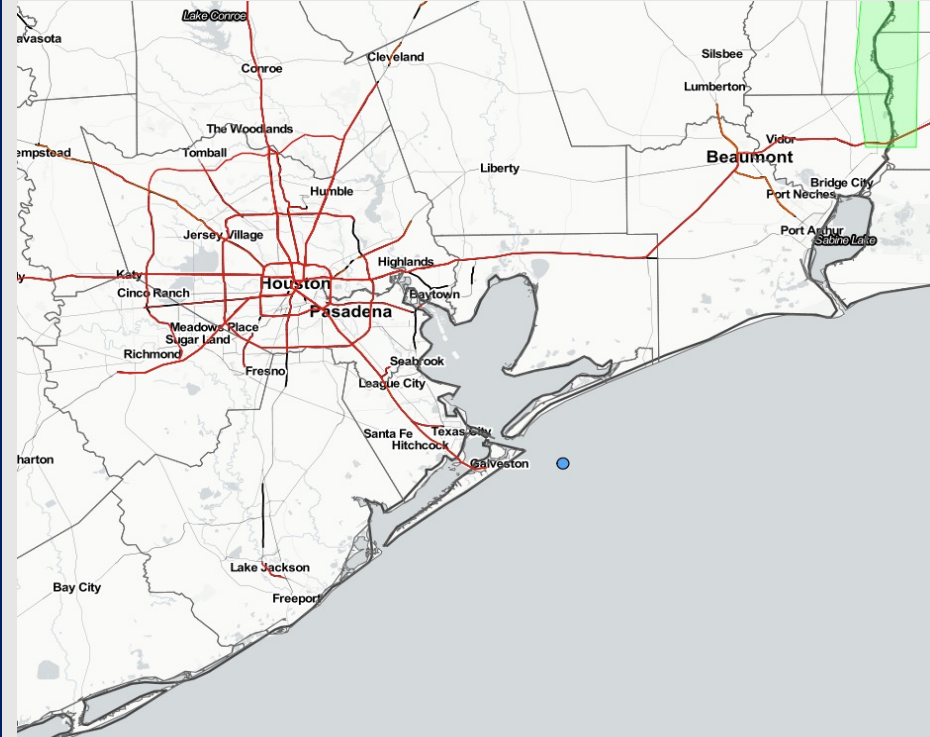


Updated: 5:00 AM CT
Monday, April 17, 2023

Forecaster: Vince Bryan

Weather Headlines

- Anticipating dry conditions for today, with minor chances to watch through mid-week. End of the week holds best rain chances.
- Winds remain elevated at the boarding the next several days (more info on daily slides).
- While timing needs ironed out, keep an eye out for this ~Saturday for a front to sweep through and sustained winds 25-30 knots possible from the N.
- Fog threats look rather limited moving forward over the next several days.



Radar/NWS Alerts: 5:00 AM CT



As always, please do not hesitate to reach out to us with any forecast questions via the chat option on the Weather Porthole or our on-call number, **(317)-560-8122** press 1 for forecast questions.

Houston Pilots Extended Range Visibility Report



Thursday 4/20/23

Reduced visibility does not look to be a concern on Thursday at the moment.



Saturday 4/22/23

Reduced visibility does not look to be a concern on Saturday at the moment.



Friday 4/21/23

Reduced visibility does not look to be a concern on Friday at the moment.



Chance for Reduced Visibility

Thursday AM	Unlikely
Thursday PM	Unlikely
Friday AM	Unlikely
Friday PM	Unlikely
Saturday AM	Unlikely
Saturday PM	Unlikely

Houston Pilots Visibility Chart (miles)



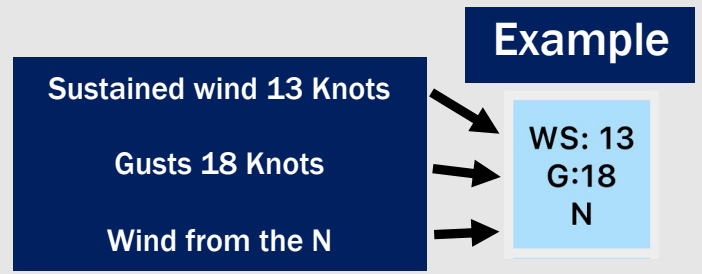
Forecast Confidence



Time	Mon 3am	Mon 4am	Mon 5am	Mon 6am	Mon 7am	Mon 8am	Mon 9am	Mon 10am	Mon 11am	Mon 12pm	Mon 1pm	Mon 2pm	Mon 3pm	Mon 4pm	Mon 5pm	Mon 6pm	Mon 7pm	Mon 8pm	Mon 9pm	Mon 10pm	Mon 11pm	Tue 12am	Tue 1am	Tue 2am	Tue 3am	Tue 4am	Tue 5am	Tue 6am	Tue 7am	Tue 8am	Tue 9am	Tue 10am	Tue 11am	Tue 12pm	Tue 1pm	Tue 2pm
610 Bridge	10	10	10	10	10	10	10	10	10	10	10	10	10	10	10	10	10	10	10	10	10	10	10	10	10	10	10	10	10	10	10	10	10	10	10	10
Kinder 1	10	10	10	10	10	10	10	10	10	10	10	10	10	10	10	10	10	10	10	10	10	10	10	10	10	10	10	10	10	10	10	10	10	10	10	10
Greens Bayou	10	10	10	10	10	10	10	10	10	10	10	10	10	10	10	10	10	10	10	10	10	10	10	10	10	10	10	10	10	10	10	10	10	10	10	10
Shell Crude	10	10	10	10	10	10	10	10	10	10	10	10	10	10	10	10	10	10	10	10	10	10	10	10	10	10	10	10	10	10	10	10	10	10	10	10
Lynchburg Ferries	10	10	10	10	10	10	10	10	10	10	10	10	10	10	10	10	10	10	10	10	10	10	10	10	10	10	10	10	10	10	10	10	10	10	10	10
Exxon 3	10	10	10	10	10	10	10	10	10	10	10	10	10	10	10	10	10	10	10	10	10	10	10	10	10	10	10	10	10	10	10	10	10	10	10	10
Morgans Point	10	10	10	10	10	10	10	10	10	10	10	10	10	10	10	10	10	10	10	10	10	10	10	10	10	10	10	10	10	10	10	10	10	10	10	10
75/76	10	10	10	10	10	10	10	10	10	10	10	10	10	10	10	10	10	10	10	10	10	10	10	10	10	10	10	10	10	10	10	10	10	10	10	10
63/64	10	10	10	10	10	10	10	10	10	10	10	10	10	10	10	10	10	10	10	10	10	10	10	10	10	10	10	10	10	10	10	10	10	10	10	10
51/52	10	10	10	10	10	10	10	10	10	10	10	10	10	10	10	10	10	10	10	10	10	10	10	10	10	10	10	10	10	10	10	10	10	10	10	10
37/38	10	10	10	10	10	10	10	10	10	10	10	10	10	10	10	10	10	10	10	10	10	10	10	10	10	10	10	10	10	10	10	10	10	10	10	10
25/26	10	10	10	10	10	10	10	10	10	10	10	10	10	10	10	10	10	10	10	10	10	10	10	10	10	10	10	10	10	10	10	10	10	10	10	10
11/12	10	10	10	10	10	10	10	10	10	10	10	10	10	10	10	10	10	10	10	10	10	10	10	10	10	10	10	10	10	10	10	10	10	10	10	10
1 & 2 Bravo	10	10	10	10	10	10	10	10	10	10	10	10	10	10	10	10	10	10	10	10	10	10	10	10	10	10	10	10	10	10	10	10	10	10	10	10

NOTE: This is automated data that may/may not agree with the official BAM thinking that's found on the daily slides or special visibility report slides. This data should be used as a guide only

Houston Pilots Wind Chart



Time Knots	Mon 3am	Mon 4am	Mon 5am	Mon 6am	Mon 7am	Mon 8am	Mon 9am	Mon 10am	Mon 11am	Mon 12pm	Mon 1pm	Mon 2pm	Mon 3pm	Mon 4pm	Mon 5pm	Mon 6pm	Mon 7pm	Mon 8pm	Mon 9pm	Mon 10pm	Mon 11pm	Tue 12am	Tue 1am	Tue 2am	Tue 3am	Tue 4am	Tue 5am	Tue 6am	Tue 7am	Tue 8am	Tue 9am	Tue 10am	Tue 11am	Tue 12pm	Tue 1pm	Tue 2pm	
610 Bridge	3	4	3	3	4	4	4	5	6	6	7	7	8	8	8	10	10	8	7	7	7	6	6	6	5	5	4	4	4	6	7	8	8	10	11	13	14
	10	11	11	11	11	12	12	11	8	7	8	8	9	10	11	10	13	12	11	10	10	10	10	10	9	8	8	7	7	9	10	13	14	15	17	18	
	N	N	NNE	NE	NE	NE	ENE	ENE	E	E	ESE	ESE	ESE	SE	SE	SE	SSE	SSE	SSE	SSE	SSE	SSE	SSE	SSE	SSE	SSE	SSE	SSE	SSE	SSE	SSE	SSE	SSE	SSE	SSE		
Kinder 1	4	4	3	3	4	5	5	5	6	6	7	7	8	8	10	10	8	7	7	7	6	6	6	5	5	4	5	5	6	7	8	10	12	13	14		
	10	10	11	11	12	12	12	11	8	7	8	8	9	10	11	13	13	12	11	10	10	10	10	9	8	8	7	7	9	11	12	14	15	17	18		
	N	N	NNE	NE	NE	NE	ENE	ENE	E	E	ESE	ESE	ESE	SE	SE	SE	SSE	SSE	SSE	SSE	SSE	SSE	SSE	SSE	SSE	SSE	SSE	SSE	SSE	SSE	SSE	SSE	SSE	SSE	SSE		
Greens Bayou	4	4	4	3	4	5	5	5	6	6	7	7	8	8	9	11	10	8	7	7	7	6	6	5	5	5	5	5	6	7	8	10	12	13	14		
	10	11	11	10	12	12	11	11	8	7	8	8	9	10	11	13	13	12	10	10	10	10	10	9	8	8	7	7	8	10	11	12	14	15	17	17	
	NNW	N	NNE	NE	NE	NE	ENE	ENE	E	E	ESE	ESE	SE	SE	SE	SE	SSE	SSE	SSE	SSE	SSE	SSE	SSE	SSE	SSE	SSE	SSE	SSE	SSE	SSE	SSE	SSE	SSE	SSE	SSE		
Shell Crude	4	4	3	3	4	5	5	5	6	6	7	7	8	8	9	11	10	8	7	7	7	7	6	6	5	5	5	5	7	7	8	10	12	13	14		
	10	11	11	11	12	12	11	11	8	7	8	9	10	11	13	13	12	11	10	10	10	10	10	9	9	8	8	8	10	11	13	14	15	17	17		
	NNW	NNE	NNE	NNE	NE	NE	ENE	ENE	E	E	ESE	SE	SE	SE	SE	SE	SSE	SSE	SSE	SSE	SSE	SSE	SSE	SSE	SSE	SSE	SSE	SSE	SSE	SSE	SSE	SSE	SSE	SSE	SSE		
Lynchburg Ferries	4	5	4	3	4	5	5	5	6	6	7	7	8	8	9	11	10	9	8	7	7	7	6	6	6	5	5	6	7	8	9	11	13	14	15		
	11	13	12	11	12	13	11	11	8	7	8	8	9	10	12	13	14	12	11	10	10	10	10	9	8	8	8	8	10	11	13	14	15	17	17		
	WSW	NNE	NNE	NNE	NE	NE	NE	ENE	E	ESE	SE	SE	SE	SE	SSE	SSE	SSE	SSE	SSE	SSE	SSE	SSE	SSE	SSE	SSE	SSE	SSE	SSE	SSE	SSE	SSE	SSE	SSE	SSE	SSE		
Exxon 3	5	5	4	4	4	5	5	5	6	6	7	7	8	9	10	11	11	10	9	8	8	8	7	7	7	6	6	7	7	8	9	11	13	14	15		
	12	14	12	12	12	13	12	12	8	8	8	8	9	11	13	14	14	13	12	11	11	11	11	10	10	9	9	9	11	12	13	14	15	17	18		
	S	NE	NNE	NNE	NE	NE	NE	ENE	E	ESE	SE	SE	SSE	SSE	SSE	SSE	SSE	SSE	SSE	SSE	SSE	SSE	SSE	S	SSE	S	SSE	S	SSE	SSE	SSE	SSE	SSE	SSE	SSE		
Morgans Point	7	7	7	6	7	7	7	6	7	7	7	8	8	9	10	11	13	12	12	11	10	10	10	10	9	9	9	8	8	9	10	11	12	14	15		
	13	16	14	13	13	14	14	12	9	8	8	9	10	12	13	15	15	14	13	13	13	13	13	12	12	11	11	11	12	13	14	15	16	17	18		
	S	NE	NNE	NNE	NE	NE	NE	ENE	E	ESE	SE	SE	SE	SSE	SSE	SSE	SSE	SSE	SSE	SSE	SSE	SSE	SSE	S	SSE	S	SSE	S	SSE	SSE	SSE	SSE	SSE	SSE	SSE		
75/76	11	13	12	12	12	12	11	10	9	7	8	10	11	12	13	15	15	15	14	13	14	14	13	13	13	12	12	11	11	12	13	14	14	15	16		
	15	17	16	15	14	15	15	13	10	9	9	10	11	13	14	16	17	16	16	15	15	15	15	15	14	14	13	13	13	13	13	13	13	13	13	13	
	E	NNE	NNE	NNE	NE	NE	NE	ENE	E	E	SE	SE	SE	SE	SSE	SSE	SSE	SSE	SSE	SSE	SSE	SSE	SSE	S	S	S	S	S	SSE	SSE	SSE	SSE	SSE	SSE	SSE		
63/64	14	15	15	14	13	14	13	11	8	7	10	11	12	13	15	15	15	15	15	14	15	15	14	14	14	13	13	13	12	14	14	14	14	16	16	17	
	17	17	17	16	15	16	16	14	10	8	10	12	12	13	13	17	17	16	16	16	16	16	16	16	15	14	15	14	14	15	15	16	17	18	18	20	
	NNE	NNE	NNE	NNE	NE	NE	NE	ENE	ENE	E	SE	SE	SE	SE	SSE	SSE	SSE	SSE	SSE	SSE	SSE	SSE	SSE	S	S	S	S	S	SSE	SSE	SSE	SSE	SSE	SSE	SSE		
51/52	14	16	15	14	13	14	12	11	8	8	11	11	11	11	12	14	14	14	13	14	14	14	14	14	13	13	13	12	14	14	14	14	16	16	16	17	
	16	18	17	16	16	17	17	14	10	9	12	12	12	12	16	16	15	15	15	15	16	15	15	15	14	14	14	14	15	15	15	15	17	17	18	19	
	NE	NNE	NNE	NNE	NE	NE	NE	ENE	ENE	ESE	ESE	ESE	SE	SE	SSE	SSE	SSE	SSE	SSE	SSE	SSE	SSE	SSE	S	S	S	S	SSE	SSE	SSE	SSE	SSE	SSE	SSE	SSE		
37/38	13	16	15	14	13	13	13	11	9	9	11	11	11	11	13	13	13	13	13	13	13	14	14	13	13	13	12	12	12	13	14	14	15	16	16	17	
	15	18	17	17	17	17	17	14	10	10	12	12	12	12	14	14	14	14	14	15	15	15	15	15	14	14	14	14	15	15	16	17	17	18	19		
	E	NNE	NNE	NNE	NE	NE	NE	ENE	E	E	ESE	ESE	ESE	ESE	SE	SE	SE	SSE	SSE	SSE	SSE	SSE	SSE	SSE	SSE	SSE	SSE	S	SSE	SSE	SSE	SSE	SSE	SSE	SSE		
25/26	11	15	14	13	12	12	12	11	9	10	11	11	11	11	10	12	12	11	11	11	12	13	12	12	12	11	11	11	12	13	14	15	15	16			
	14	18	18	17	17	18	17	15	11	11	12	12	11	11	13	13	13	13	13	14	14	14	14	14	13	13	13	13	13	14	15	16	16	17	18		
	SSE	NNE	NNE	NE	NE	NE	NE	ENE	E	E	ESE	ESE	ESE	ESE	SE	SE	SE	SSE	SSE	SSE	SSE	SSE	SSE	SSE	SSE	SSE	SSE	S	S	SSE	SSE	SSE	SSE	SSE	SSE		
11/12	11	14	13	12	11	12	12	12	10	10	11	11	11	10	10	11	11	11	12	12	13	13	13	12	11	11	11	12	13	13	14	14	15	15			
	14	20	19	18	18	19	18	16	12	11	12	11	11	11	12	12	13	13	13	14	15	14	14	14	13	13	13	13	14	15	15	16	17	17			
	WSW	NNE	NNE	NNE	NE	NE	NE	ENE	ENE	E	E	ESE	ESE	ESE	ESE	SE	SE	SE	SE	SSE	SSE	SSE	SSE	SSE	SSE	SSE	SSE	SSE	S	S	SSE	SSE	SSE	SSE	SSE		
1 & 2 Bravo	15	17	17	15	15	15	15	15	12	11	12	11	11	11	12	13	13	13	14	14	15	15	15	15	14	14	14	14	15	15	16	16	17	17			
	17	20	20	18	18	19	19	17	13	12	12	12	12	11	11	12	13	14	15	16	16	16	16	15	15	15	15	15	16	16	16	17	17	18			
	SW	NNE	NNE	NNE	NE	NE	NE	ENE	ENE	E	E	E	ESE	ESE	ESE	SE	SE	SE	SE	SSE	SSE	SSE	SSE	SSE	SSE	SSE	SSE	SSE	SSE	SSE	SSE	SSE	SSE	SSE	SSE		

NOTE: This is automated data that may/may not agree with the official BAM thinking that's found on the daily slides. This data should be used as a guide only

Houston Pilots: Mon. 4/17/2023



Forecast Discussion

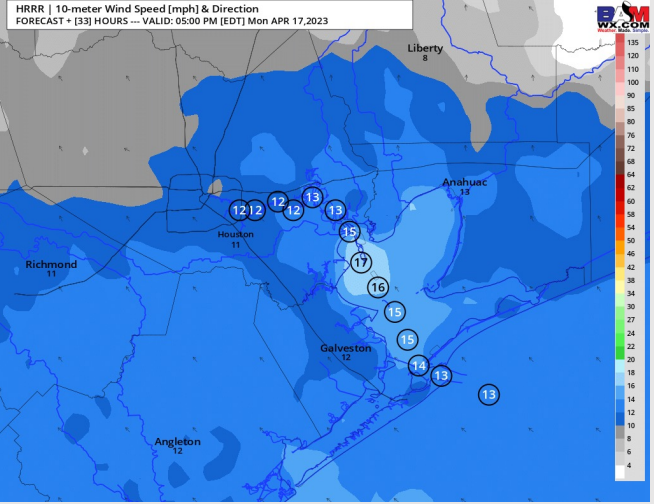
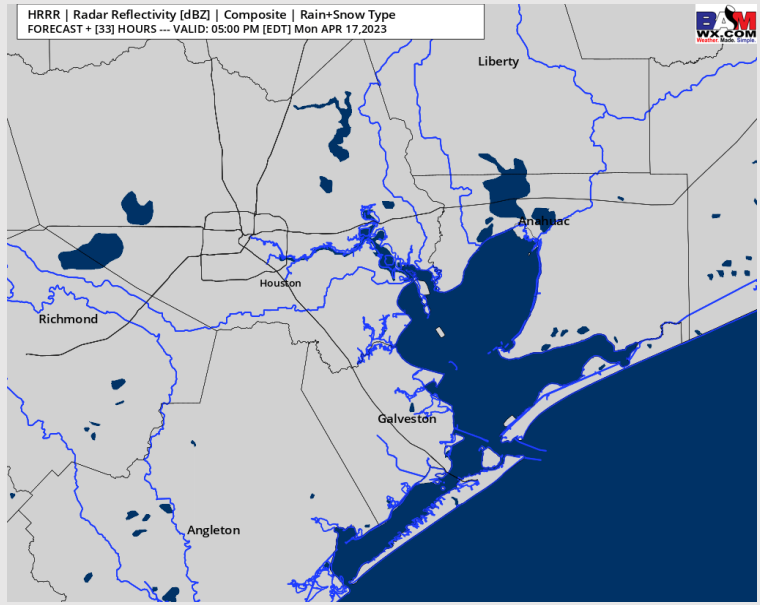
Precip: Favoring dry conditions today.

Wind: Sustained winds will continue to gradually shift clockwise throughout the day and be from the E by 11 AM and the SE by 2 PM and stay that way through the rest of the evening. Winds N of Morgan's Point will be 4 - 9 kts through Monday morning and will briefly increase to 8-13 kts between 2 - 8 PM before dropping back to 4 - 9 kts for the rest of the evening. Winds S of Morgan's Point will be 15-20 knots through mid-day before falling back to 10 - 15 kts for the PM. 20-25 kt gusts at the boarding station possible through Noon.

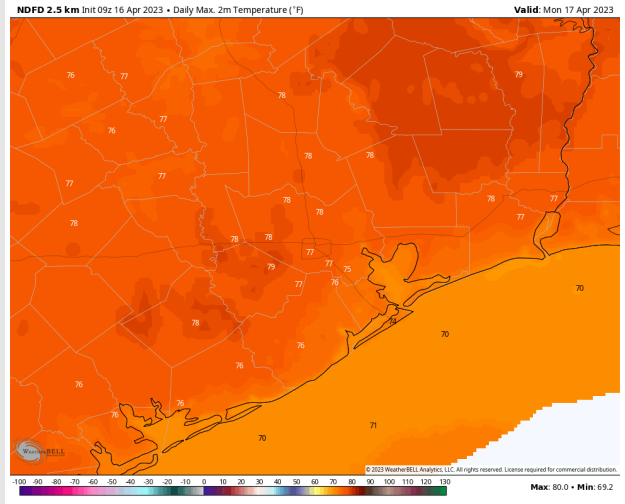
Temps: High temperatures in the low/mid 70s F for all stations.

Visibility: No visibility issues anticipated.

Precip Image: 4 PM CT



Wind Speed:
4 PM CT



High Temps
Today

Houston Pilots: Tue. 4/18/2023



Forecast Discussion

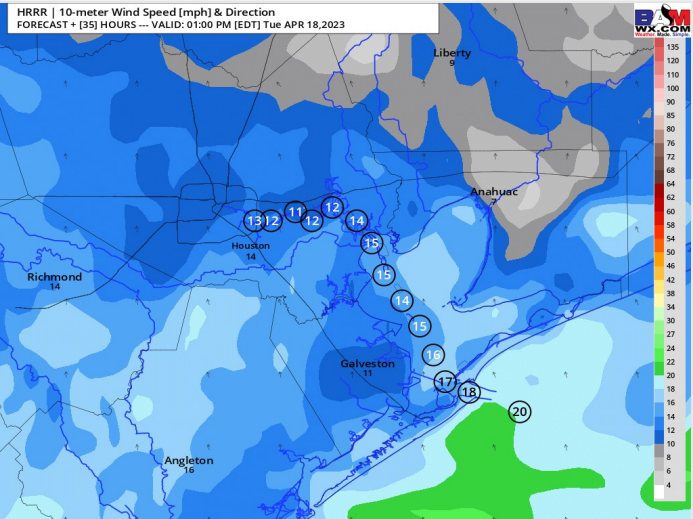
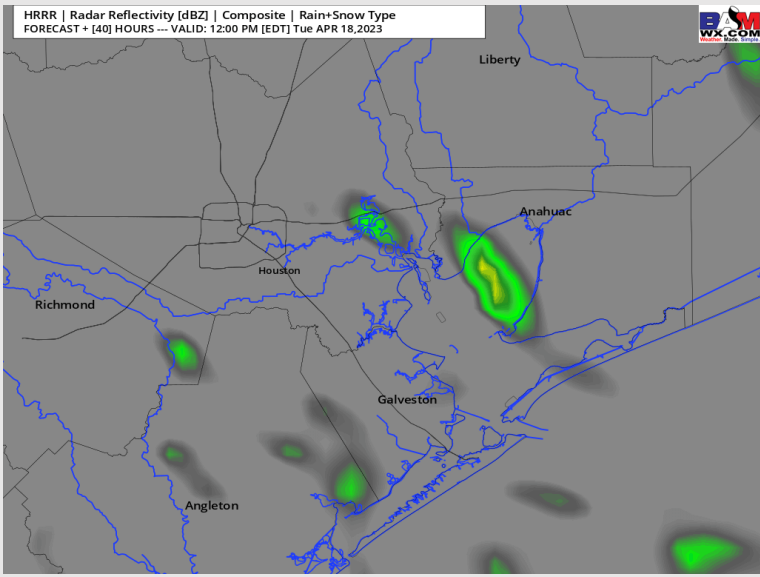
Precip: Anticipating dry conditions through 8 AM on Tuesday. After 8 AM, a 20-30% chance of scattered showers moves in for the rest of the day on Tuesday.

Wind: Winds will mainly be from the S/SE all day Tuesday. Stations N of Morgan's Point, winds to start will be at 5-10 kts and S of Morgan's Point will be at 10 - 15 kts. After 11 AM, winds will increase to 13-18 kts at all stations with stations near the Boarding Station increasing to 15-20 kts after 8 PM. Gusts of 20-25 kts will be possible at the Boarding Station most of the day

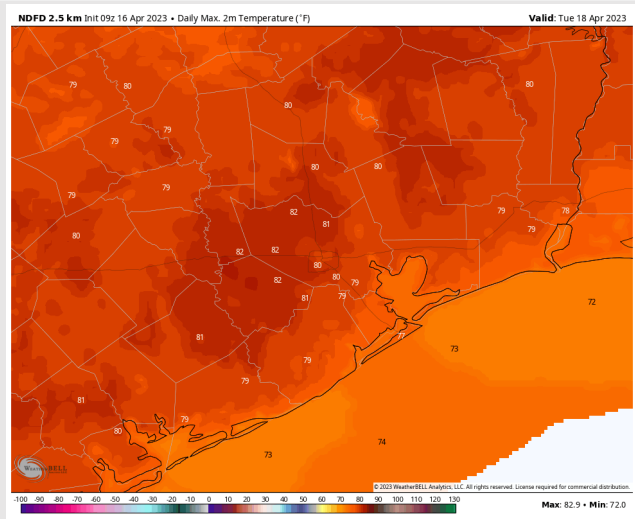
Temps: High temps on Tuesday will be in the mid to upper 70s at all stations.

Visibility: Not anticipating visibility concerns at this time.

Precip Image: 11 AM CT



Wind Speed:
12 PM CT



High Temps
Tuesday

Forecast Discussion

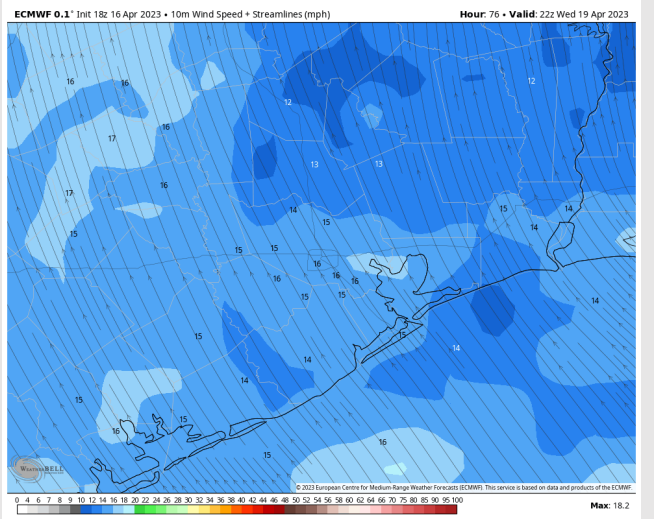
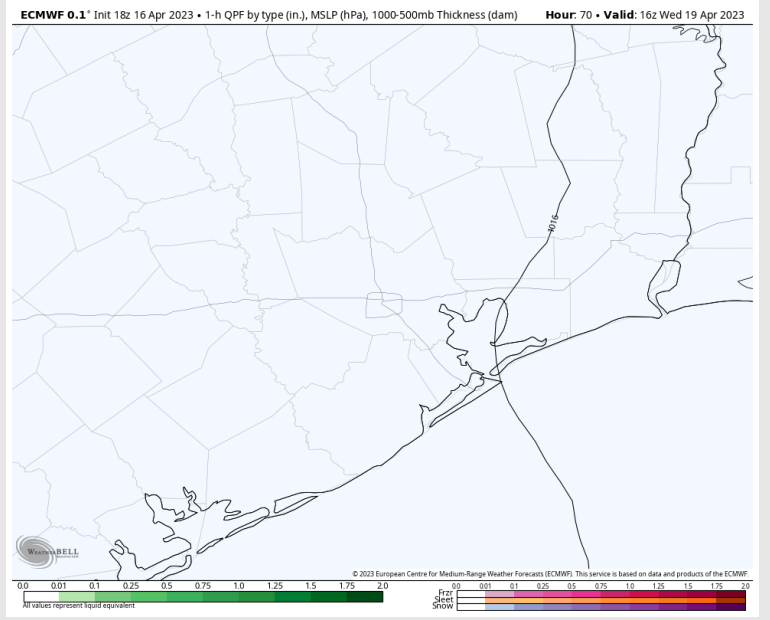
Precip: Anticipating dry conditions Wednesday outside of a 10-20% stray shower chance late AM.

Wind: Winds will be out of the SE throughout the day. Winds north of Morgan's Point will start out at 5-9 kts and winds south of Morgan's Point will start out at 10 - 16 kts. Between 10 AM - 8 PM, all stations will see sustained winds of 10 - 15 kts. After 8 PM, winds decrease to 5 - 9 kts N of Morgan's Point and 9 - 14 kts S of Morgan's Point.

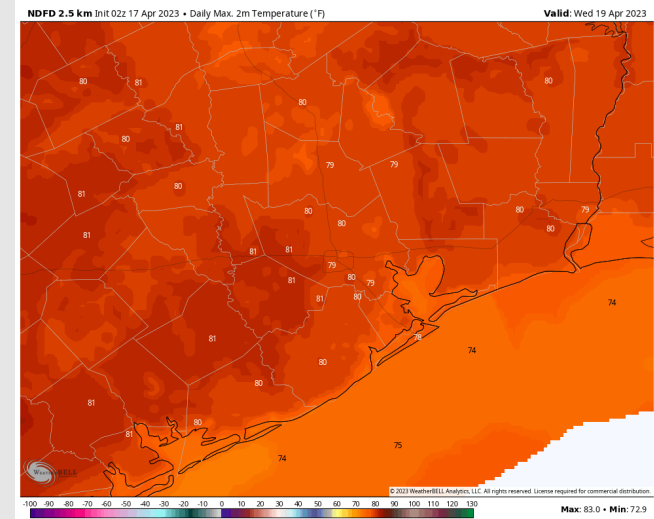
Temps: High temperatures on Wednesday will be in the mid to upper 80s F across all stations.

Visibility: No reduced visibility concerns expected at this time.

Precip Image: 11 AM CT



Wind Speed:
5 PM CT

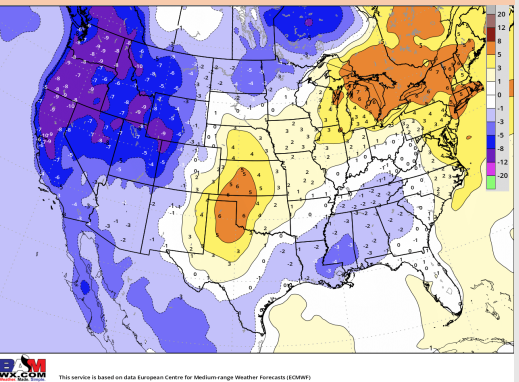


High Temps
Wednesday

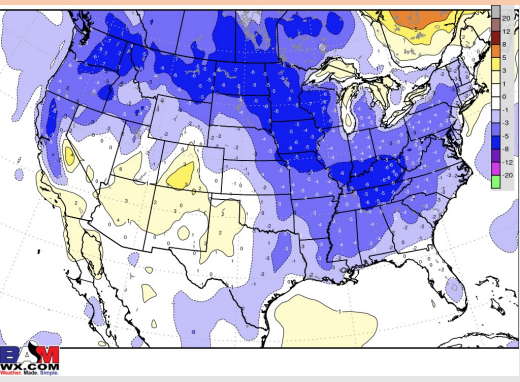
Houston Pilots: 4/17/23



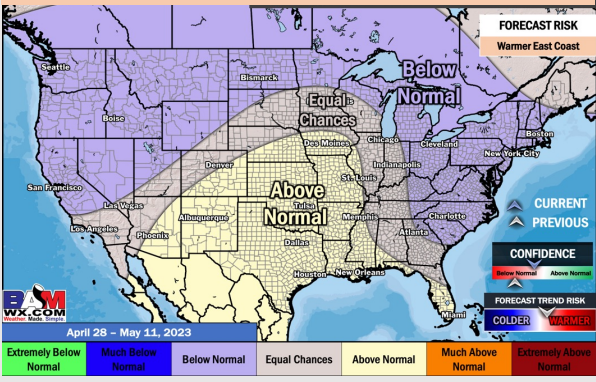
Next 7 Day Temperature Departure



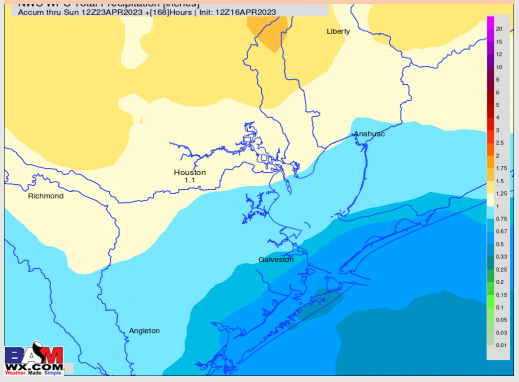
8-14 Day Temperature Departure



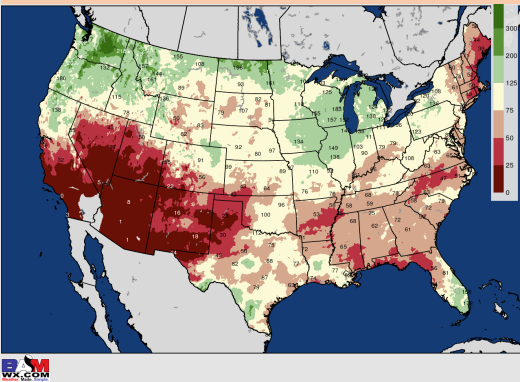
15-30 Day Temperature Departure



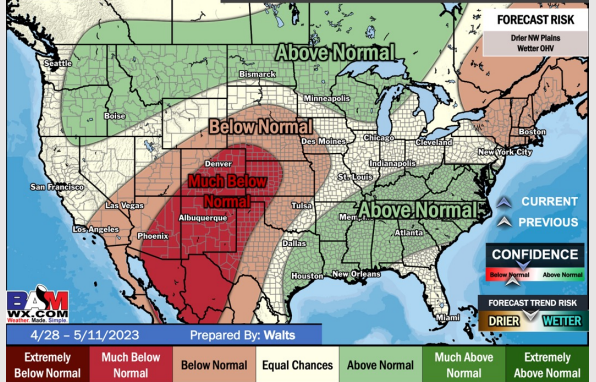
Next 7 Day Total Precipitation



8-14 Day % of Average Precip.



15-30 Day % of Average Precip.



- Expecting a quieter stretch of weather to start the week before rain chances pick up Thu and beyond. Temps will be near to below normal for SE TX.
- Expecting below normal precipitation chances as well as near to just below normal temperatures extending into the week 2 timeframe.
- Above normal temperatures and above normal chances for precipitation favored in the week 3/4 timeframe.