

Houston Pilots Forecast Package

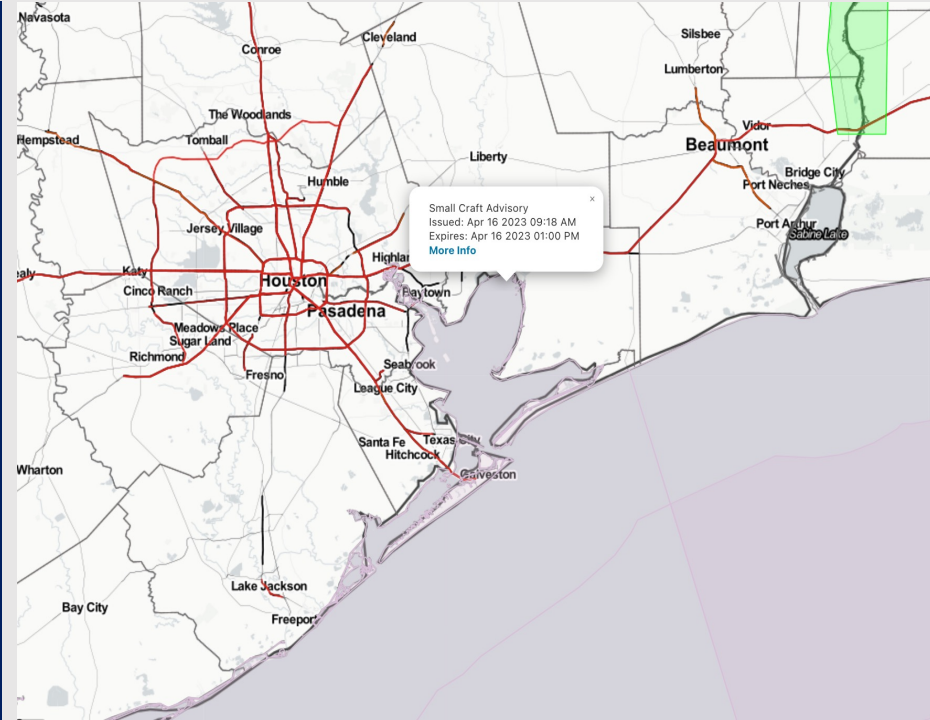


Updated: 11:00 AM CT
Sunday, April 16, 2023

Forecaster: Tyler Hollingsworth

Weather Headlines

- Anticipating dry conditions over the next two day, with the next chance of rain occurring being Tuesday PM
- During the daytime hours today will be a risk for some gusty winds (sustained 25-30 knots possible) behind the cold front that passed through early this morning.
- Anticipating winds to continue to decrease through the day.
- Fog threats look rather limited moving forward over the next several days.



Radar/NWS Alerts: 11:00 AM CT



As always, please do not hesitate to reach out to us with any forecast questions via the chat option on the Weather Porthole or our on-call number, **(317)-560-8122** press 1 for forecast questions.

Houston Pilots Extended Range Visibility Report



Wednesday 4/19/23

Reduced visibility does not look to be a concern on Wednesday at the moment.



Friday 4/21/23

Reduced visibility does not look to be a concern on Friday at the moment.



Thursday 4/20/23

Reduced visibility does not look to be a concern on Thursday at the moment.



Chance for Reduced Visibility

Wednesday AM	Unlikely
Wednesday PM	Unlikely
Thursday AM	Unlikely
Thursday PM	Unlikely
Friday AM	Unlikely
Friday PM	Unlikely

Houston Pilots Visibility Chart (miles)



Forecast Confidence



Time	Sun 9am	Sun 10am	Sun 11am	Sun 12pm	Sun 1pm	Sun 2pm	Sun 3pm	Sun 4pm	Sun 5pm	Sun 6pm	Sun 7pm	Sun 8pm	Sun 9pm	Sun 10pm	Sun 11pm	Mon 12am	Mon 1am	Mon 2am	Mon 3am	Mon 4am	Mon 5am	Mon 6am	Mon 7am	Mon 8am	Mon 9am	Mon 10am	Mon 11am	Mon 12pm	Mon 1pm	Mon 2pm	Mon 3pm	Mon 4pm	Mon 5pm	Mon 6pm	Mon 7pm	Mon 8pm		
610 Bridge	10	10	10	10	10	10	10	10	10	10	10	10	10	10	10	10	10	10	10	10	10	10	10	10	10	10	10	10	10	10	10	10	10	10	10	10	10	10
Kinder 1	10	10	10	10	10	10	10	10	10	10	10	10	10	10	10	10	10	10	10	10	10	10	10	10	10	10	10	10	10	10	10	10	10	10	10	10	10	10
Greens Bayou	10	10	10	10	10	10	10	10	10	10	10	10	10	10	10	10	10	10	10	10	10	10	10	10	10	10	10	10	10	10	10	10	10	10	10	10	10	10
Shell Crude	10	10	10	10	10	10	10	10	10	10	10	10	10	10	10	10	10	10	10	10	10	10	10	10	10	10	10	10	10	10	10	10	10	10	10	10	10	10
Lynchburg Ferries	10	10	10	10	10	10	10	10	10	10	10	10	10	10	10	10	10	10	10	10	10	10	10	10	10	10	10	10	10	10	10	10	10	10	10	10	10	10
Exxon 3	10	10	10	10	10	10	10	10	10	10	10	10	10	10	10	10	10	10	10	10	10	10	10	10	10	10	10	10	10	10	10	10	10	10	10	10	10	10
Morgans Point	10	10	10	10	10	10	10	10	10	10	10	10	10	10	10	10	10	10	10	10	10	10	10	10	10	10	10	10	10	10	10	10	10	10	10	10	10	10
75/76	10	10	10	10	10	10	10	10	10	10	10	10	10	10	10	10	10	10	10	10	10	10	10	10	10	10	10	10	10	10	10	10	10	10	10	10	10	10
63/64	10	10	10	10	10	10	10	10	10	10	10	10	10	10	10	10	10	10	10	10	10	10	10	10	10	10	10	10	10	10	10	10	10	10	10	10	10	10
51/52	10	10	10	10	10	10	10	10	10	10	10	10	10	10	10	10	10	10	10	10	10	10	10	10	10	10	10	10	10	10	10	10	10	10	10	10	10	10
37/38	10	10	10	10	10	10	10	10	10	10	10	10	10	10	10	10	10	10	10	10	10	10	10	10	10	10	10	10	10	10	10	10	10	10	10	10	10	10
25/26	10	10	10	10	10	10	10	10	10	10	10	10	10	10	10	10	10	10	10	10	10	10	10	10	10	10	10	10	10	10	10	10	10	10	10	10	10	10
11/12	10	10	10	10	10	10	10	10	10	10	10	10	10	10	10	10	10	10	10	10	10	10	10	10	10	10	10	10	10	10	10	10	10	10	10	10	10	10
1 & 2 Bravo	10	10	10	10	10	10	10	10	10	10	10	10	10	10	10	10	10	10	10	10	10	10	10	10	10	10	10	10	10	10	10	10	10	10	10	10	10	10

NOTE: This is automated data that may/may not agree with the official BAM thinking that's found on the daily slides or special visibility report slides. This data should be used as a guide only

Houston Pilots Wind Chart



Forecast Confidence



Sustained wind 13 Knots
Gusts 18 Knots
Wind from the N

Example

WS: 13
G:18
N

Time Knots	Sun 9am	Sun 10am	Sun 11am	Sun 12pm	Sun 1pm	Sun 2pm	Sun 3pm	Sun 4pm	Sun 5pm	Sun 6pm	Sun 7pm	Sun 8pm	Sun 9pm	Sun 10pm	Sun 11pm	Mon 12am	Mon 1am	Mon 2am	Mon 3am	Mon 4am	Mon 5am	Mon 6am	Mon 7am	Mon 8am	Mon 9am	Mon 10am	Mon 11am	Mon 12pm	Mon 1pm	Mon 2pm	Mon 3pm	Mon 4pm	Mon 5pm	Mon 6pm	Mon 7pm	Mon 8pm				
610 Bridge	11 NNE	10 NNE	10 NNE	11 N	12 N	10 N	10 NNE	9 NNE	8 NNE	7 NNE	6 NNE	4 NNE	3 NNE	2 NNE	3 NNE	3 NNE	3 NNE	3 NNE	3 NNE	3 NNE	3 NNE	3 NNE	3 NNE	4 NNE	4 NNE	6 NNE	7 NNE	8 NNE	8 NNE	9 NNE	10 NNE	10 NNE	10 NNE	11 NNE	10 NNE	11 NNE	10 NNE	8 NNE		
Kinder 1	11 NNE	10 NNE	10 NNE	11 N	12 N	10 NNE	11 NNE	10 NNE	9 NNE	8 NNE	7 NNE	6 NNE	5 NNE	3 NNE	2 NNE	3 NNE	3 NNE	3 NNE	3 NNE	3 NNE	3 NNE	3 NNE	3 NNE	3 NNE	4 NNE	4 NNE	6 NNE	7 NNE	8 NNE	8 NNE	9 NNE	10 NNE	10 NNE	11 NNE	12 NNE	12 NNE	13 NNE	14 NNE	14 NNE	13 NNE
Greens Bayou	11 NNE	10 NNE	10 NNE	11 N	12 N	11 NNE	11 NNE	10 NNE	9 NNE	8 NNE	7 NNE	4 NNE	4 NNE	3 NNE	2 NNE	3 NNE	3 NNE	3 NNE	3 NNE	3 NNE	3 NNE	3 NNE	3 NNE	3 NNE	4 NNE	4 NNE	6 NNE	7 NNE	8 NNE	9 NNE	9 NNE	10 NNE	10 NNE	12 NNE	12 NNE	13 NNE	14 NNE	14 NNE	10 NNE	8 NNE
Shell Crude	11 NNE	10 NNE	10 NNE	11 N	12 N	11 NNE	11 NNE	10 NNE	9 NNE	8 NNE	7 NNE	4 NNE	4 NNE	3 NNE	2 NNE	3 NNE	3 NNE	3 NNE	3 NNE	3 NNE	3 NNE	3 NNE	3 NNE	3 NNE	4 NNE	4 NNE	6 NNE	7 NNE	8 NNE	9 NNE	9 NNE	10 NNE	10 NNE	11 NNE	12 NNE	13 NNE	14 NNE	14 NNE	10 NNE	8 NNE
Lynchburg Ferries	11 N	10 N	10 N	11 NNE	12 N	11 N	11 NNE	10 NNE	9 NNE	8 NNE	7 NNE	4 NNE	4 NNE	3 NNE	2 NNE	4 NNE	4 NNE	4 NNE	4 NNE	4 NNE	4 NNE	4 NNE	4 NNE	4 NNE	4 NNE	5 NNE	6 NNE	7 NNE	8 NNE	9 NNE	9 NNE	11 NNE	11 NNE	11 NNE	11 NNE	11 NNE	11 NNE	11 NNE	9 NNE	
Exxon 3	11 N	10 N	10 N	11 NNE	12 N	11 N	11 NNE	10 NNE	9 NNE	8 NNE	7 NNE	4 NNE	4 NNE	3 NNE	2 NNE	4 NNE	4 NNE	4 NNE	4 NNE	4 NNE	4 NNE	4 NNE	4 NNE	4 NNE	4 NNE	5 NNE	6 NNE	7 NNE	8 NNE	9 NNE	10 NNE	11 NNE	12 NNE	13 NNE	14 NNE	14 NNE	11 NNE	9 NNE		
Morgans Point	12 N	11 N	10 N	12 N	13 N	12 N	11 N	10 N	10 N	9 N	8 N	6 N	6 N	5 N	4 N	5 N	5 N	5 N	5 N	5 N	5 N	5 N	5 N	6 N	6 N	7 N	7 N	8 N	8 N	9 N	10 N	12 N	12 N	13 N	14 N	15 N	15 N	11 N	9 N	
75/76	16 N	14 N	12 N	14 NNE	15 N	16 N	15 N	11 N	11 N	11 N	11 N	10 N	10 N	9 N	8 N	8 N	7 N	7 N	7 N	7 N	7 N	7 N	7 N	7 N	8 N	8 N	9 N	9 N	10 N	10 N	11 N	12 N	12 N	14 N	15 N	15 N	16 N	17 N	17 N	15 N
63/64	19 N	15 N	13 N	15 NNE	16 N	14 N	14 N	13 N	12 N	11 N	12 N	12 N	13 N	13 N	11 N	9 N	9 N	8 N	8 N	8 N	8 N	8 N	8 N	8 N	9 N	9 N	10 N	10 N	11 N	12 N	13 N	14 N	15 N	16 N	17 N	17 N	17 N	17 N	16 N	
51/52	19 NNE	16 NNE	14 NNE	15 N	17 N	14 NNE	15 NNE	14 NNE	12 NNE	11 NNE	12 NNE	13 NNE	13 NNE	11 NNE	9 NNE	9 NNE	9 NNE	9 NNE	9 NNE	9 NNE	9 NNE	9 NNE	9 NNE	9 NNE	9 NNE	10 NNE	10 NNE	11 NNE	12 NNE	13 NNE	14 NNE	15 NNE	16 NNE	16 NNE	16 NNE	16 NNE	16 NNE	16 NNE	16 NNE	
37/38	19 NNE	17 NNE	15 NNE	16 NNE	17 NNE	15 NNE	16 NNE	14 NNE	12 NNE	12 NNE	12 NNE	12 NNE	12 NNE	11 NNE	9 NNE	10 NNE	10 NNE	10 NNE	10 NNE	10 NNE	10 NNE	10 NNE	10 NNE	10 NNE	10 NNE	10 NNE	11 NNE	11 NNE	12 NNE	13 NNE	14 NNE	15 NNE	16 NNE	17 NNE	17 NNE	17 NNE	17 NNE	17 NNE	17 NNE	
25/26	17 NNE	16 NNE	14 NNE	15 NNE	16 NNE	14 NNE	15 NNE	15 NNE	13 NNE	12 NNE	11 NNE	12 NNE	13 NNE	13 NNE	11 NNE	10 NNE	10 NNE	10 NNE	10 NNE	10 NNE	10 NNE	10 NNE	10 NNE	10 NNE	10 NNE	10 NNE	11 NNE	12 NNE	13 NNE	14 NNE	15 NNE	16 NNE	17 NNE	17 NNE	17 NNE	17 NNE	17 NNE	17 NNE	17 NNE	
11/12	15 NNE	15 NNE	13 NNE	13 NNE	15 NNE	13 NNE	14 NNE	14 NNE	12 NNE	11 NNE	10 NNE	10 NNE	10 NNE	10 NNE	8 NNE	9 NNE	9 NNE	9 NNE	9 NNE	9 NNE	9 NNE	9 NNE	9 NNE	9 NNE	9 NNE	10 NNE	11 NNE	11 NNE	11 NNE	11 NNE	11 NNE	11 NNE	11 NNE	11 NNE	11 NNE	11 NNE	11 NNE	11 NNE	11 NNE	
1 & 2 Bravo	18 NNE	17 NNE	16 NNE	15 NNE	16 NNE	16 NNE	16 NNE	15 NNE	14 NNE	12 NNE	13 NNE	13 NNE	13 NNE	12 NNE	11 NNE	11 NNE	11 NNE	11 NNE	11 NNE	11 NNE	11 NNE	11 NNE	11 NNE	11 NNE	11 NNE	11 NNE	12 NNE	12 NNE	12 NNE	12 NNE	11 NNE	11 NNE	11 NNE	11 NNE	11 NNE	11 NNE	11 NNE	11 NNE	11 NNE	

NOTE: This is automated data that may/may not agree with the official BAM thinking that's found on the daily slides. This data should be used as a guide only

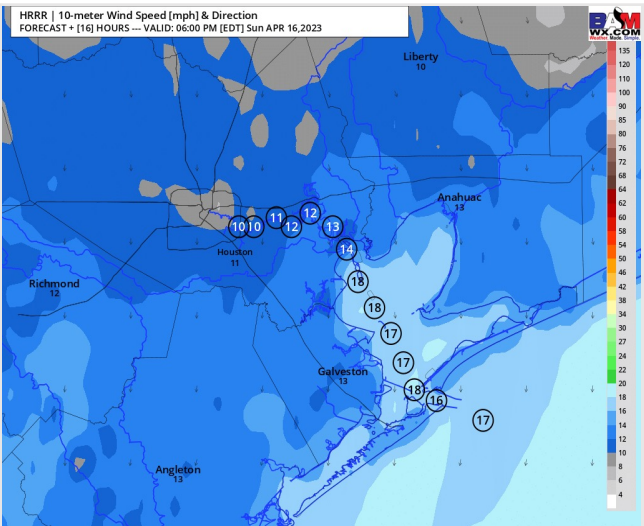
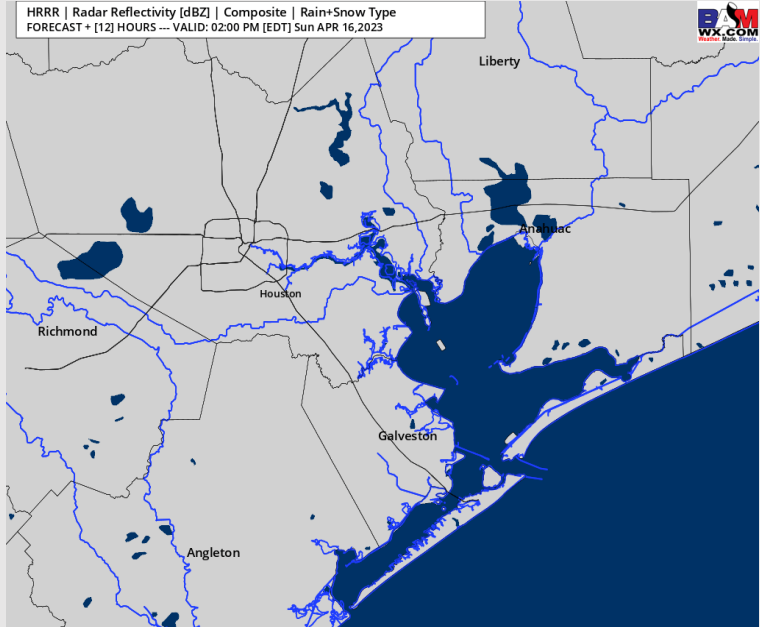
Houston Pilots: Sun. 4/16/2023



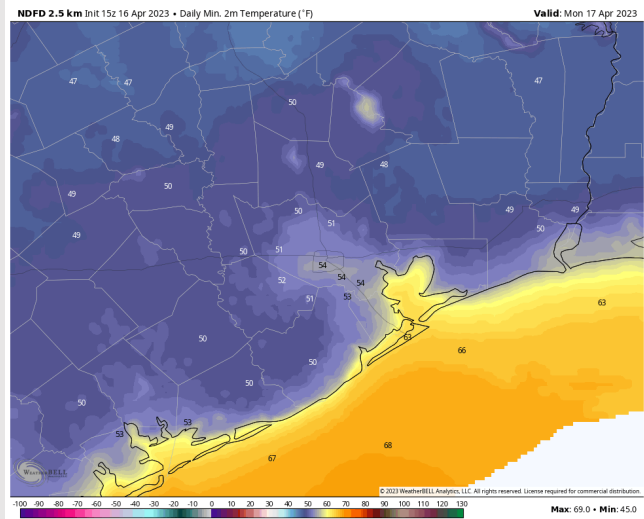
Forecast Discussion

- Precip:** Anticipating dry conditions the rest of the day today.
- Wind:** Winds will be out of the N/NE throughout the day. Winds north of Morgan's Point will be 10-15 kts through 7 PM, then calming down to 3-8 kts the rest of the day. South of Morgan's Point, winds will be at 17-23 kts through 8 PM. After 8 PM, winds will decrease once again to 9-15 kts for the rest of the day.
- Temps:** Low temperatures Monday AM will be in the low to mid 60s F across all stations.
- Visibility:** No reduced visibility concerns expected for the rest of the day.

Precip Image: 1 PM CT



Wind Speed:
5 PM CT



Low Temps
Monday AM

Houston Pilots: Mon. 4/17/2023



Forecast Discussion

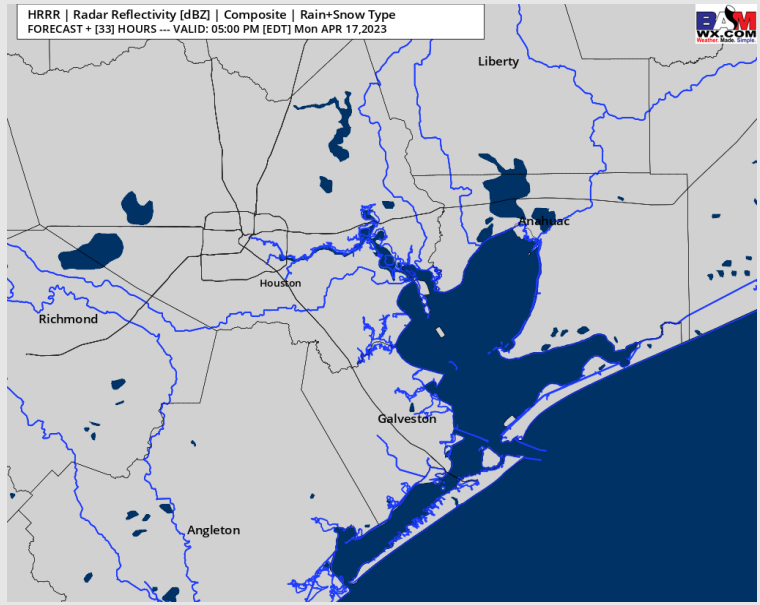
Precip: Favoring dry conditions throughout Monday.

Wind: Sustained winds will start out from the N and gradually shift clockwise throughout the day and be from the E by 8 AM and the SE by 2 PM and stay that way through the rest of the evening. Winds N of Morgan's Point will be 4 – 9 kts through Monday morning and will briefly increase to 10 – 15 kts between 2 – 8 PM before dropping back to 4 – 9 kts for the rest of the day. Winds S of Morgan's Point will be 10 – 15 kts throughout the day.

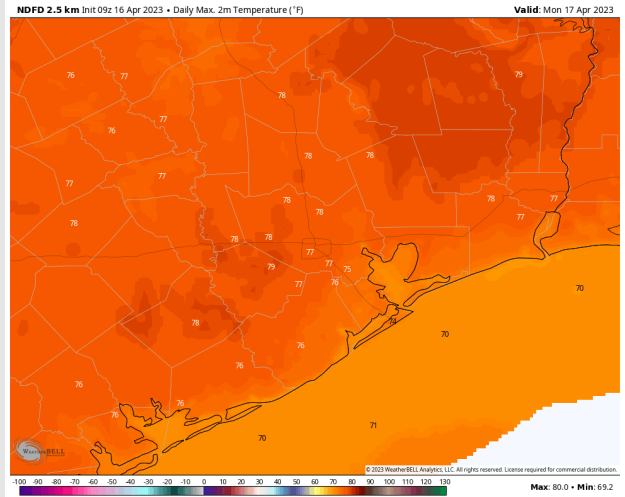
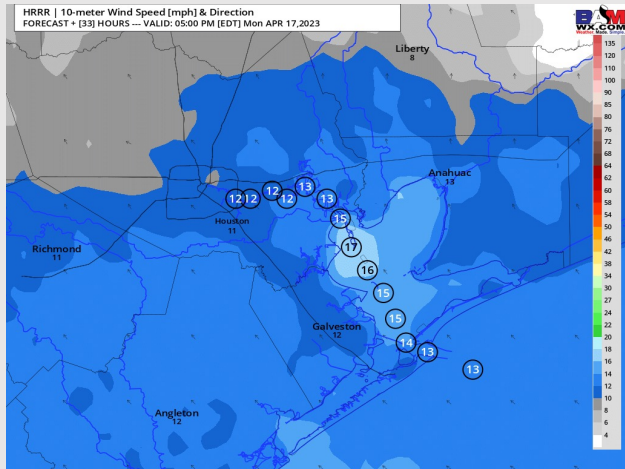
Temps: High temperatures Monday in the low/mid 70s F for all stations.

Visibility: Visibility concerns are not favored.

Precip Image: 4 PM CT



Wind Speed:
4 PM CT



High Temps
Monday

Forecast Discussion

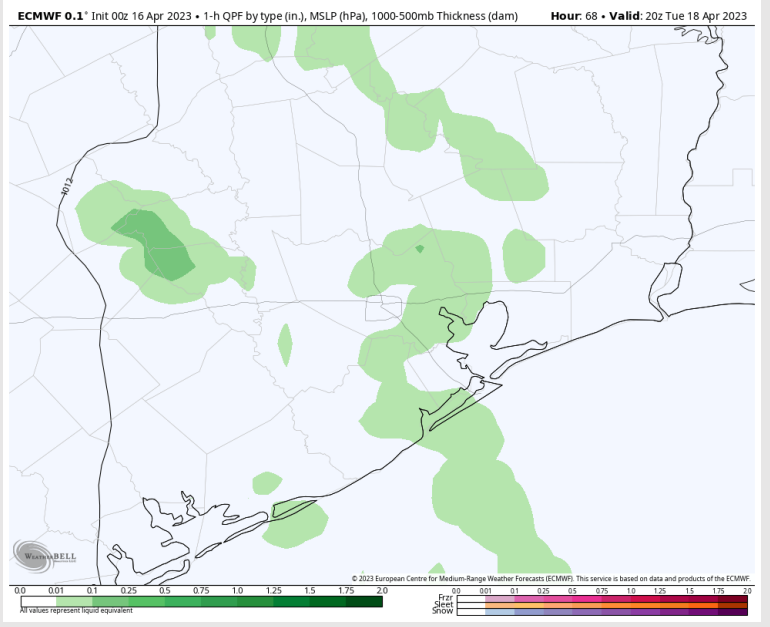
Precip: Anticipating dry conditions through 1 PM on Tuesday. After 1 PM, a 20-30% chance of scattered showers moves in for the rest of the day on Tuesday.

Wind: Winds will mainly be from the S/SE all day Tuesday. Stations N of Morgan's Point, winds will be at 5-10 kts and S of Morgan's Point will be at 10 - 15 kts. After 11 AM, winds will increase to 10 - 15 kts at all stations with stations near the Boarding Station increasing to 16 - 18 kts after 8 PM.

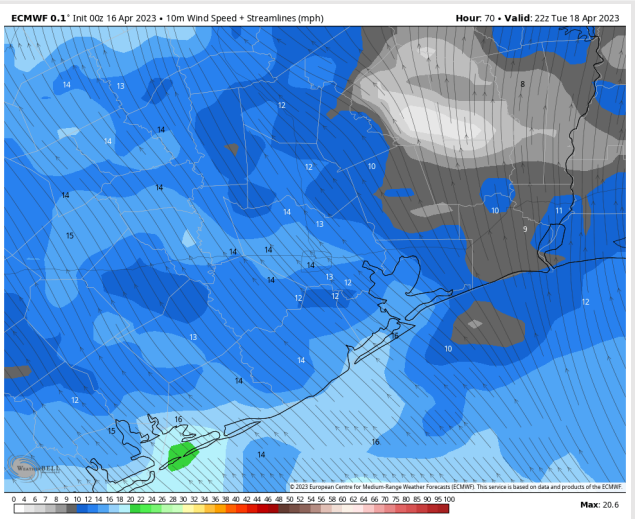
Temps: High temps on Tuesday will be in the mid to upper 70s at all stations.

Visibility: Not anticipating visibility concerns at this time.

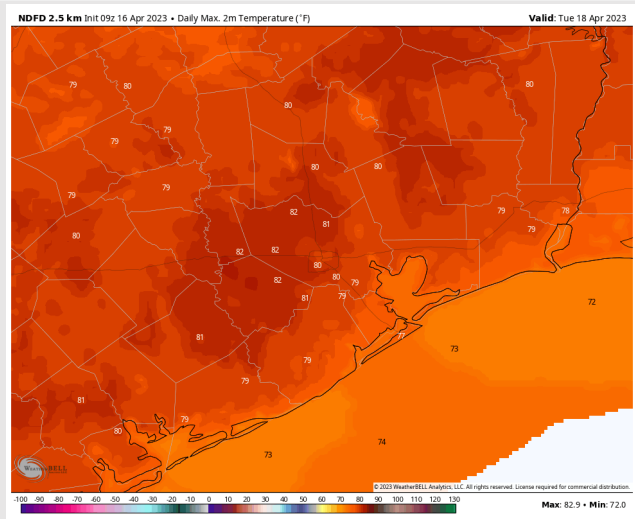
Precip Image: 3 PM CT



**Wind Speed:
5 PM CT**

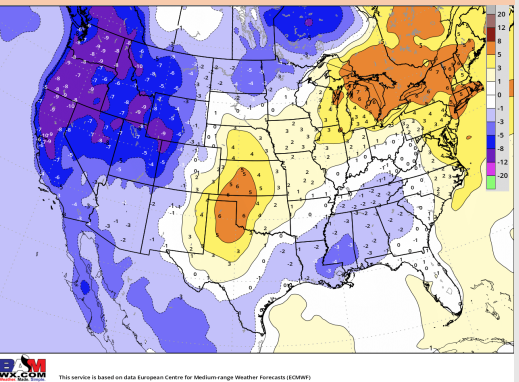


**High Temps
Tuesday**

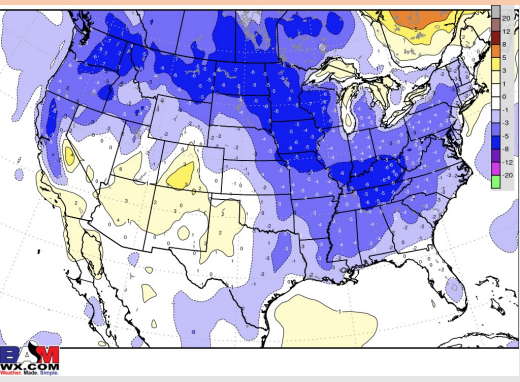


Houston Pilots: 4/16/23

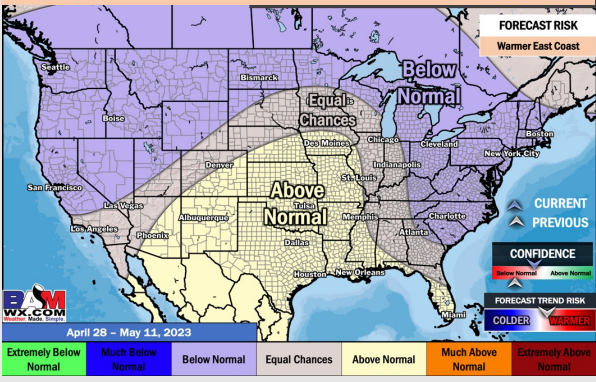
Next 7 Day Temperature Departure



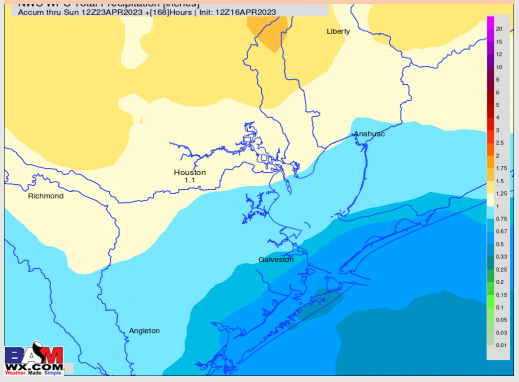
8-14 Day Temperature Departure



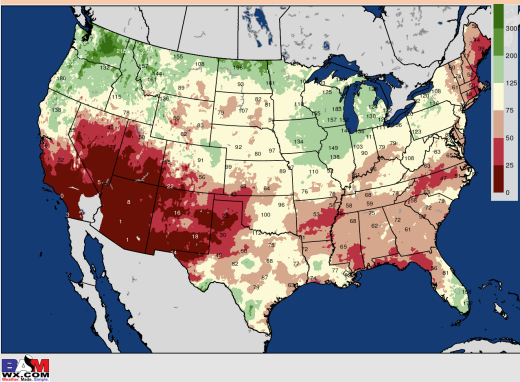
15-30 Day Temperature Departure



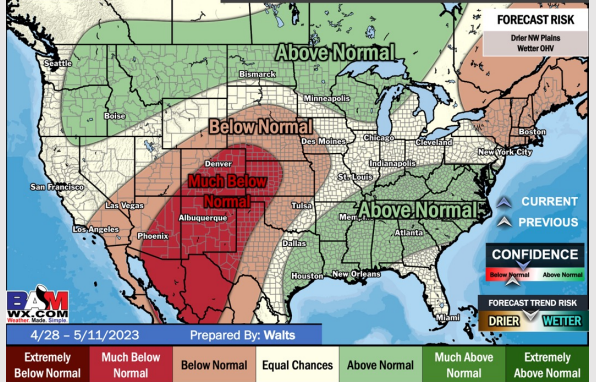
Next 7 Day Total Precipitation



8-14 Day % of Average Precip.



15-30 Day % of Average Precip.



- Expecting a quieter stretch of weather to start early next week with another round of showers through the mid week. Temps will be near to below normal for SE TX.
- Expecting below normal precipitation chances as well as near to just below normal temperatures extending into the week 2 timeframe.
- Above normal temperatures and above normal chances for precipitation favored in the week 3/4 timeframe.