

Houston Pilots Forecast Package



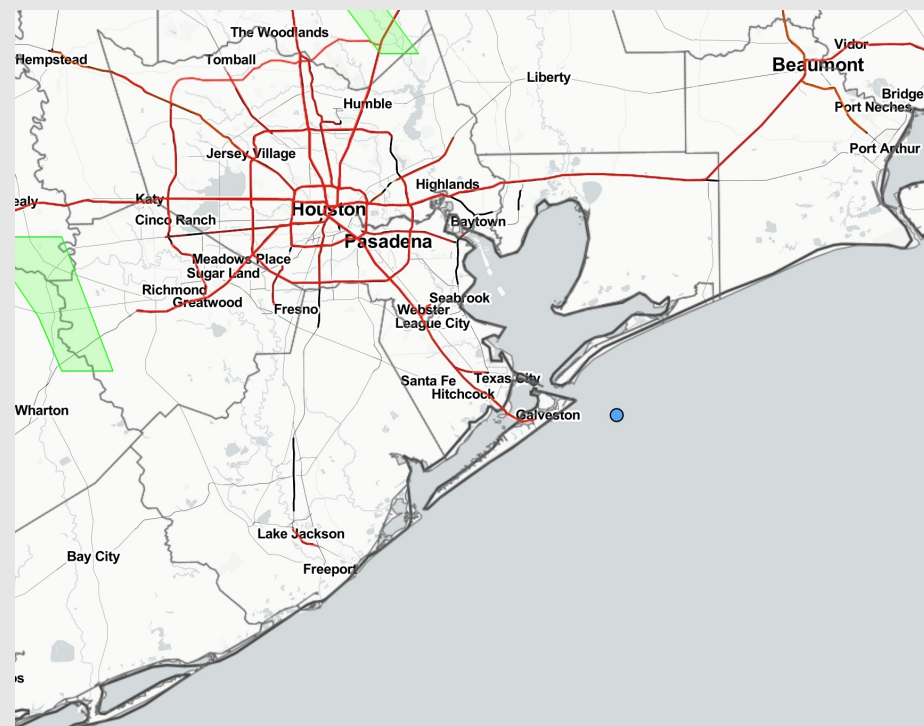
Updated: 12:30 PM CT

Saturday, April 8, 2023

Forecaster: Josh Collins

Weather Headlines

- **Winds anticipated to continue to calm through the day today.**
- **Anticipating the rest of the weekend to be dry. Eyeing the middle of next week for more rain chances.**
- **Fog threats look rather limited moving forward over the next several days. See Day 1 slide for more information.**



Radar/NWS Alerts: 12:30 PM CT



As always, please do not hesitate to reach out to us with any forecast questions via the chat option on the Weather Porthole or our on-call number, **(317)-560-8122** press 1 for forecast questions.

Houston Pilots Extended Range Visibility Report



Tuesday 4/11/23

Reduced visibility does not look to be a concern Tuesday.



Thursday 4/13/23

Reduced visibility does not look to be a concern Thursday.



Wednesday 4/12/23

Reduced visibility does not look to be a concern Wednesday.



| Chance for Reduced Visibility | |
|-------------------------------|----------|
| Tuesday AM | Unlikely |
| Tuesday PM | Unlikely |
| Wednesday AM | Unlikely |
| Wednesday PM | Unlikely |
| Thursday AM | Unlikely |
| Thursday PM | Unlikely |

The image contains two logos. On the left is the logo for BAM WX.COM, featuring the letters 'BAM' in a stylized font with a white 'A' and a black shadow, followed by 'WX.COM' in black and 'Weather. Made. Simple.' in blue and red text below. On the right is the logo for Houston Pilots, featuring a large red 'H' with a black outline and the text 'Houston Pilots' in white serif font to its left.

**Above
Normal**

**Below
Normal**

[illegible]

The image contains two logos. On the left is the logo for BAM WX.COM, featuring the letters 'BAM' in a stylized font with a white 'A' and a black and white swirl, followed by 'WX.COM' in black and 'Weather. Made. Simple.' in blue and red. On the right is the logo for Houston Pilots, featuring a large red 'H' with the text 'Houston Pilots' in white and black.

Example

**Below
Normal**

Wind from the N

WS: 13
G:18
N

| | Time | Knots | Sat 12pm | Sat 1pm | Sat 2pm | Sat 3pm | Sat 4pm | Sat 5pm | Sat 6pm | Sat 7pm | Sat 8pm | Sat 9pm | Sat 10pm | Sat 11pm | Sun 12am | Sun 1am | Sun 2am | Sun 3am | Sun 4am | Sun 5am | Sun 6am | Sun 7am | Sun 8am | Sun 9am | Sun 10am | Sun 11am | Sun 12pm | Sun 1pm | Sun 2pm | Sun 3pm | Sun 4pm | Sun 5pm | Sun 6pm | Sun 7pm | Sun 8pm | Sun 9pm | Sun 10pm | Sun 11pm |
|-------------------|------|-------|----------|---------|---------|---------|---------|---------|---------|---------|---------|---------|----------|----------|----------|---------|---------|---------|---------|---------|---------|---------|---------|---------|----------|----------|----------|---------|---------|---------|---------|---------|---------|---------|---------|---------|----------|----------|
| 610 Bridge | 6 | 11 | 5 | 5 | 5 | 5 | 5 | 6 | 5 | 3 | 3 | 2 | 3 | 2 | 1 | 2 | 4 | 4 | 4 | 4 | 4 | 5 | 5 | 6 | 6 | 6 | 6 | 6 | 6 | 7 | 7 | 7 | 7 | 6 | 6 | 5 | 6 | |
| | N | N | N | NNE | NNE | NNE | NNE | NNE | NNE | NNE | S | SE | NNE | NNE | W | WSW | NNE | NNE | NNE | NE | NE | NE | NE | NE | ENE | NE | NE | NE | NE | NNE | NE | NE | NE | NE | ENE | ENE | ENE | |
| Kinder 1 | 6 | 11 | 5 | 5 | 5 | 5 | 6 | 5 | 3 | 3 | 2 | 3 | 2 | 1 | 2 | 4 | 4 | 4 | 4 | 4 | 5 | 5 | 6 | 6 | 7 | 6 | 6 | 6 | 7 | 7 | 7 | 7 | 6 | 6 | 5 | 6 | | |
| | N | N | N | NNE | NNE | NNE | NNE | NNE | NNE | N | SE | ESE | NNE | NNE | NNW | SW | NNE | NNE | NNE | NE | NE | NE | NE | NE | ENE | NE | NE | NE | NE | NNE | NE | NE | NE | NE | ENE | ENE | ENE | |
| Greens Bayou | 6 | 11 | 5 | 5 | 5 | 6 | 6 | 6 | 5 | 3 | 3 | 2 | 3 | 2 | 1 | 2 | 4 | 5 | 4 | 4 | 5 | 5 | 6 | 6 | 7 | 6 | 6 | 7 | 7 | 7 | 7 | 6 | 6 | 5 | 6 | | | |
| | N | N | N | NNE | NNE | NNE | N | NNE | NNE | N | NNE | ENE | ENE | NNE | NNW | ESE | NNE | NNE | NNE | NE | NE | NE | NE | NE | ENE | NE | NE | NE | NE | NNE | NE | NE | NE | NE | ENE | ENE | ENE | |
| Shell Crude | 6 | 11 | 5 | 5 | 5 | 6 | 6 | 6 | 5 | 3 | 3 | 2 | 3 | 2 | 2 | 2 | 4 | 5 | 5 | 5 | 5 | 5 | 6 | 6 | 7 | 6 | 6 | 7 | 7 | 7 | 7 | 6 | 6 | 5 | 6 | | | |
| | N | N | N | N | NNE | NNE | N | NNE | NNE | NE | N | NE | NNE | ENE | WNW | ENE | NNE | NNE | NNE | NE | NE | NE | NE | NE | ENE | NE | NE | NE | NE | NE | NE | NE | NE | NE | ENE | ENE | ENE | |
| Lynchburg Ferries | 6 | 11 | 6 | 5 | 6 | 6 | 6 | 6 | 5 | 4 | 3 | 2 | 2 | 2 | 2 | 2 | 5 | 5 | 5 | 5 | 5 | 6 | 6 | 7 | 7 | 6 | 7 | 7 | 7 | 7 | 7 | 8 | 7 | 6 | 5 | 6 | | |
| | N | N | NNW | N | NNE | N | NNE | NNE | NNE | NNE | N | NE | NNE | S | WNW | NNE | NE | NNE | NE | NE | NE | NE | ENE | NE | NE | NE | NE | NE | NE | NNE | NE | NE | NE | NE | ENE | ENE | ENE | |
| Exxon 3 | 7 | 11 | 6 | 6 | 6 | 6 | 6 | 6 | 5 | 4 | 3 | 3 | 2 | 2 | 3 | 3 | 5 | 6 | 6 | 5 | 6 | 6 | 6 | 7 | 7 | 7 | 7 | 7 | 7 | 7 | 7 | 8 | 7 | 7 | 6 | 6 | | |
| | N | N | NNW | N | NNE | N | NNE | NNE | NNE | NE | N | NNE | NNE | S | SE | NNE | NE | NE | NE | NE | NE | NE | NE | ENE | NE | NE | NE | NE | NE | NNE | NNE | NE | NE | NE | ENE | ENE | ENE | |
| Morgans Point | 7 | 12 | 6 | 6 | 7 | 6 | 7 | 7 | 6 | 5 | 5 | 5 | 5 | 4 | 5 | 4 | 6 | 7 | 7 | 7 | 7 | 7 | 8 | 8 | 7 | 7 | 7 | 7 | 7 | 7 | 8 | 8 | 9 | 9 | 8 | 8 | 7 | 8 |
| | N | N | NNW | N | NNE | N | N | N | NNE | NNE | N | NNE | NNE | E | NNE | NE | NE | NE | NE | NE | NE | NE | NE | ENE | NE | NE | NE | NE | NE | NE | NE | NE | NE | NE | NE | NE | ENE | ENE |
| 75/76 | 10 | 12 | 8 | 8 | 8 | 8 | 8 | 9 | 9 | 9 | 9 | 8 | 8 | 8 | 9 | 8 | 9 | 9 | 10 | 10 | 10 | 10 | 11 | 10 | 10 | 9 | 8 | 8 | 9 | 9 | 10 | 11 | 11 | 10 | 10 | 10 | 10 | |
| | N | N | NNW | NNE | NNE | NNE | N | N | NNE | NNE | NNE | NNE | NE | NE | NE | NE | NE | NE | NE | NE | ENE | ENE | ENE | ENE | NE | NE | NE | NE | NE | NE | NE | NE | ENE | ENE | ENE | ENE | ENE | ENE |
| 63/64 | 11 | 12 | 9 | 9 | 9 | 9 | 10 | 10 | 10 | 11 | 10 | 10 | 10 | 10 | 11 | 10 | 10 | 10 | 10 | 11 | 12 | 12 | 12 | 12 | 10 | 10 | 9 | 8 | 8 | 9 | 10 | 11 | 11 | 12 | 12 | 11 | 10 | 10 |
| | N | N | NNW | SE | NNE | NNE | N | N | NNE | NNE | NNE | NNE | NE | NE | ENE | ENE | ENE | ENE | ENE | ENE | ENE | ENE | ENE | NE | NE | NE | NE | NE | NE | NE | NE | NE | ENE | ENE | ENE | ENE | E | |
| 51/52 | 12 | 12 | 10 | 10 | 10 | 10 | 10 | 11 | 11 | 11 | 10 | 10 | 10 | 10 | 10 | 9 | 9 | 10 | 10 | 11 | 12 | 12 | 11 | 10 | 10 | 9 | 8 | 8 | 9 | 9 | 10 | 10 | 10 | 10 | 10 | 10 | 10 | |
| | N | N | NNW | SSE | NNE | NNE | NNE | NNE | NNE | NNE | NNE | NE | NE | NE | NE | NE | NE | NE | NE | NE | ENE | ENE | ENE | NE | NE | NE | NE | NE | NE | NE | NE | ENE | ENE | ENE | ENE | ENE | ENE | |
| 37/38 | 12 | 13 | 11 | 11 | 10 | 10 | 10 | 11 | 10 | 11 | 10 | 10 | 9 | 10 | 10 | 9 | 9 | 9 | 10 | 11 | 11 | 11 | 11 | 10 | 10 | 9 | 8 | 9 | 9 | 9 | 10 | 10 | 9 | 9 | 9 | 9 | 10 | |
| | N | N | NNW | SSW | NNE | NNE | NNE | NNE | NNE | NNE | NNE | NE | NE | NE | NE | NE | NE | NE | NE | NE | ENE | ENE | ENE | NE | NE | NE | NE | NE | NE | NE | NE | NE | ENE | ENE | ENE | ENE | ENE | |
| 25/26 | 12 | 13 | 10 | 10 | 10 | 9 | 9 | 10 | 9 | 10 | 10 | 9 | 8 | 8 | 9 | 8 | 8 | 9 | 9 | 10 | 11 | 10 | 10 | 10 | 10 | 9 | 9 | 9 | 9 | 9 | 8 | 9 | 9 | 9 | 9 | 9 | 10 | |
| | N | N | N | WNW | N | NNE | NNE | NNE | NNE | NNE | NNE | NNE | NE | NE | NE | NE | NE | NE | NE | NE | ENE | NE | NE | NE | NE | NE | NE | NE | NE | NE | NE | ENE | ENE | ENE | ENE | ENE | ENE | |
| 11/12 | 11 | 13 | 10 | 10 | 9 | 9 | 9 | 9 | 9 | 10 | 9 | 9 | 8 | 8 | 8 | 8 | 9 | 9 | 10 | 10 | 11 | 10 | 10 | 10 | 10 | 9 | 9 | 9 | 9 | 9 | 9 | 9 | 9 | 9 | 9 | 9 | 10 | |
| | N | N | N | SW | N | NNE | NNE | NNE | NNE | NNE | NNE | NNE | NNE | NE | NE | NE | NE | NE | NE | NE | NE | NE | NE | NE | NE | NE | NE | NE | NE | ENE | ENE | ENE | ENE | ENE | ENE | ENE | ENE | ENE |
| 1 & 2 Bravo | 12 | 13 | 11 | 10 | 10 | 10 | 10 | 11 | 11 | 12 | 11 | 10 | 10 | 10 | 10 | 10 | 10 | 10 | 10 | 12 | 12 | 13 | 13 | 13 | 12 | 11 | 10 | 10 | 9 | 9 | 9 | 10 | 10 | 11 | 11 | 11 | 11 | |
| | N | N | N | N | NNE | NNE | NNE | NNE | NNE | NNE | NNE | NNE | NNE | NE | NE | NE | NE | NE | NE | NE | NE | NE | NE | NE | NE | NE | NE | NE | NE | ENE | ENE | ENE | ENE | ENE | ENE | ENE | ENE | |

Houston Pilots: sat. 4/8/2023

Forecast Discussion

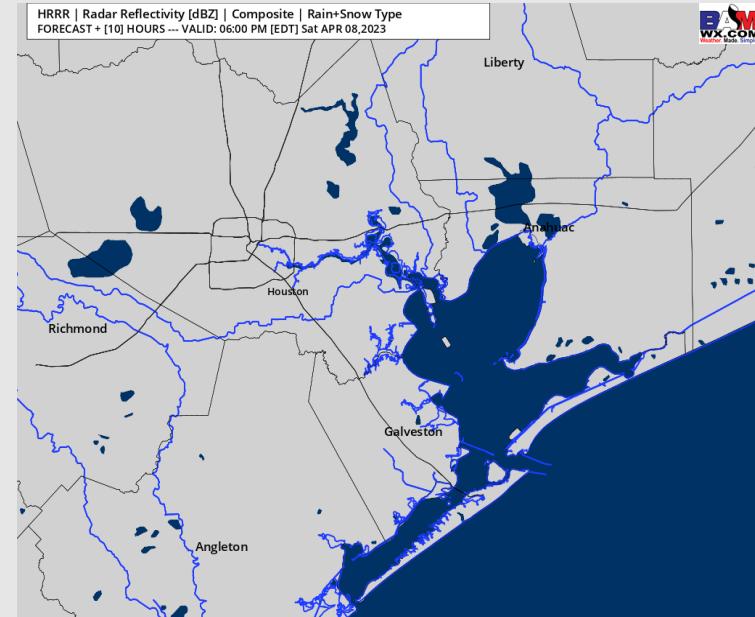
Precip: Anticipating dry conditions for the rest of the day today.

Wind: Winds will continue to be out of the N/NE for the rest of the day today. Winds north of Morgan's Point will continue to be at 6 – 11 kts winds South of Morgan's Point will be 10-15 kts for the rest of the day.

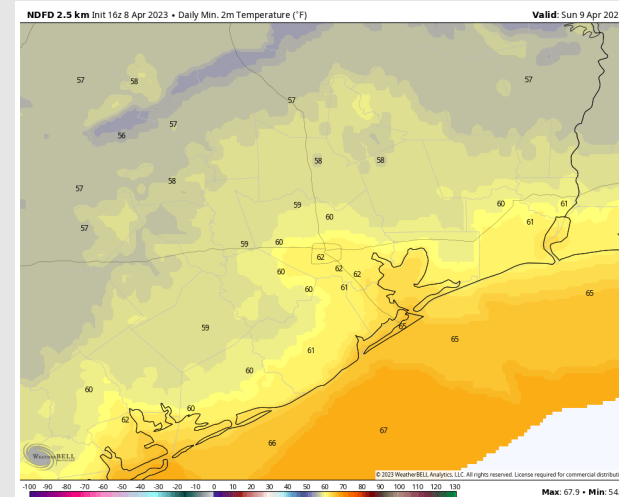
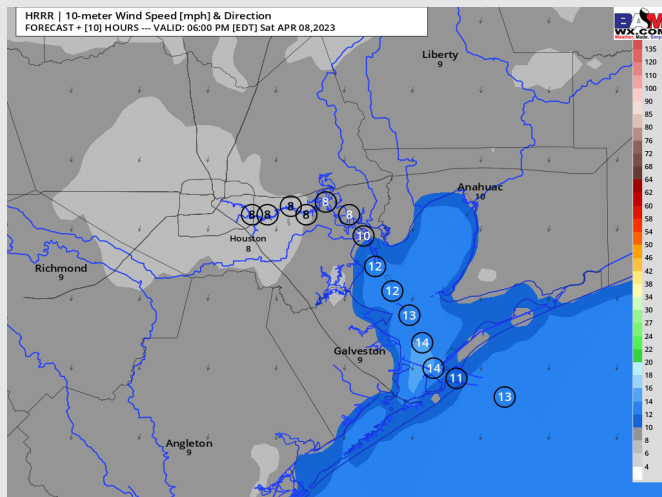
Temps: Low temperatures Sunday AM in the mid-lower 60s F across all stations.

Visibility: Visibility could be slightly reduced (5 -7 mi) near the boarding station at times due to a low cloud deck overnight tonight, however overall, not anticipating any issues with fog at this time.

Precip Forecast: 5 PM CT



Wind Speed
5 PM CT



Low Temps
Sunday AM

Houston Pilots: Sun. 4/9/2023

Forecast Discussion

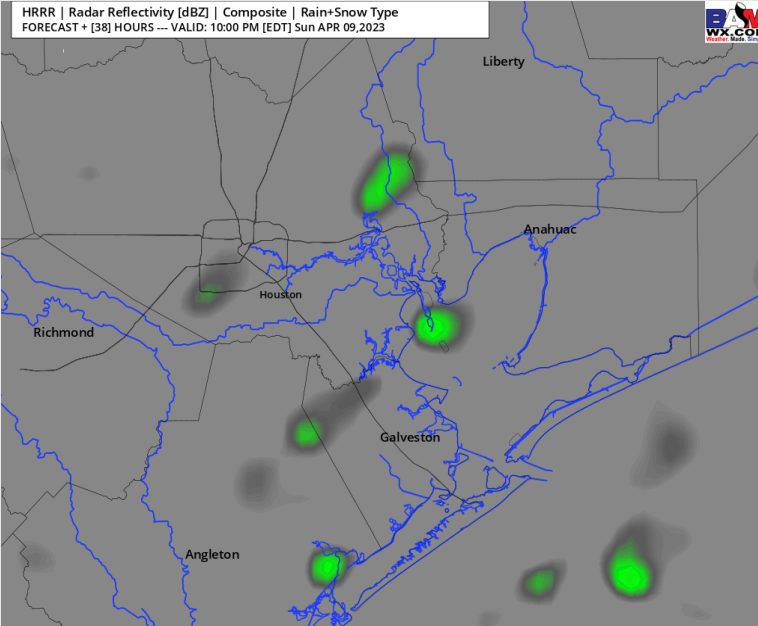
Precip: Favoring dry conditions throughout the day Sunday until around 5 PM. After 5 PM a 10% chance of an isolated shower will be possible until the end of the day Sunday.

Wind: Sustained winds out of the NNE Sunday throughout the day Sunday. Favoring winds of 4-8 kts for stations N of Morgan's Point, favoring winds of 6-13 kts for stations S of Morgan's Point.

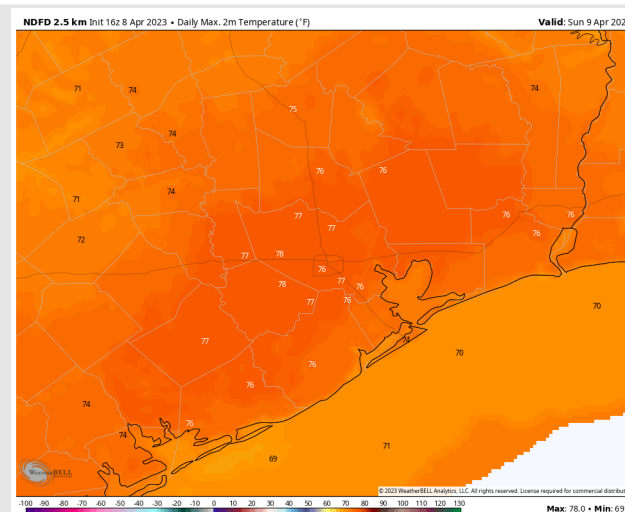
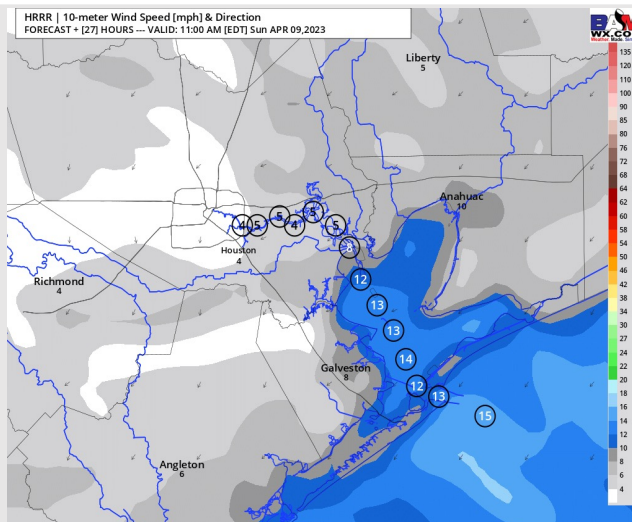
Temps: Favoring high temperatures in the low to mid 70s F for all stations Sunday.

Visibility: Not anticipating any fog concerns for Sunday at this time.

Precip Forecast: 9 PM CT



Wind Speed
10 AM CT



High Temps
Sunday

Houston Pilots: Mon. 4/10/2023

Forecast Discussion

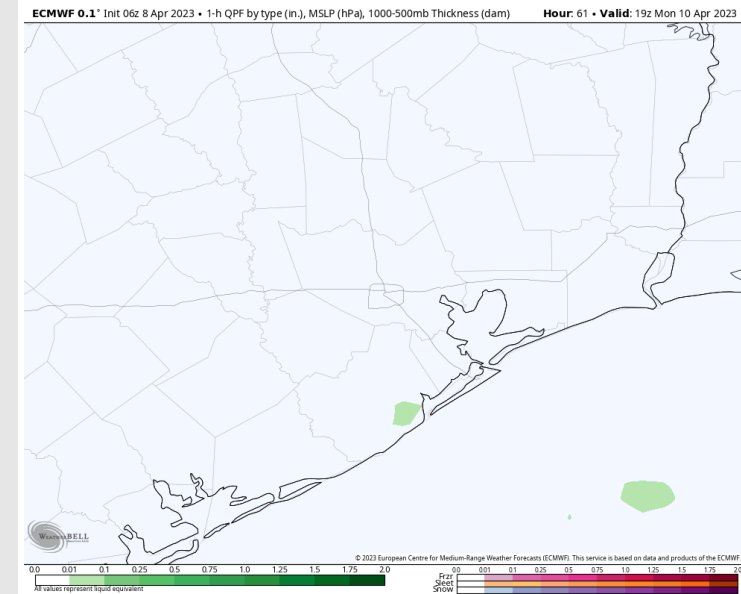
Precip: Isolated shower chances (10%) between 10 AM – 6 PM.

Wind: Sustained winds from the E/NE throughout the entire day on Monday. Winds north of Morgan's Point at 3 – 9 kts and south of Morgan's Point at 8 – 13 kts throughout the day.

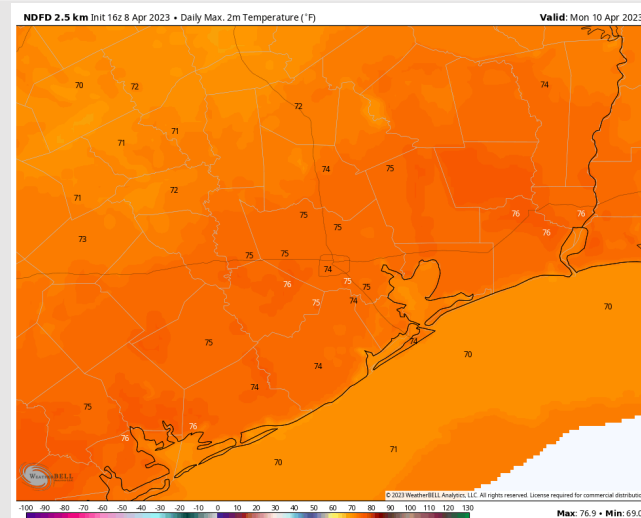
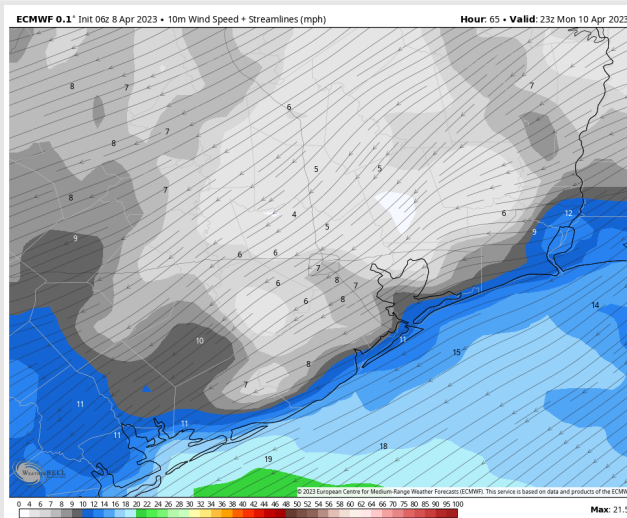
Temps: High temperatures on Monday in the low/mid 70s F at all stations.

Visibility: Not anticipating visibility issues at this time.

Precip Forecast: 2 PM CT

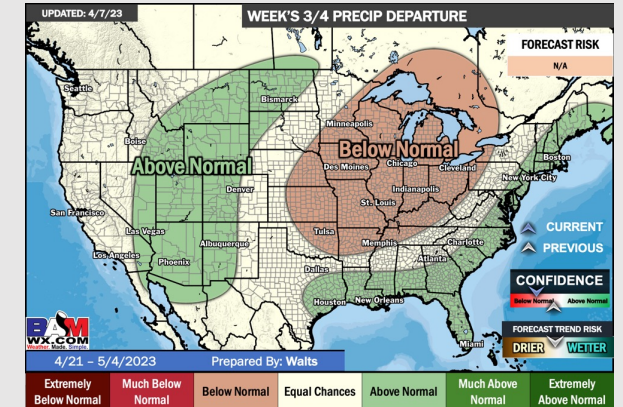
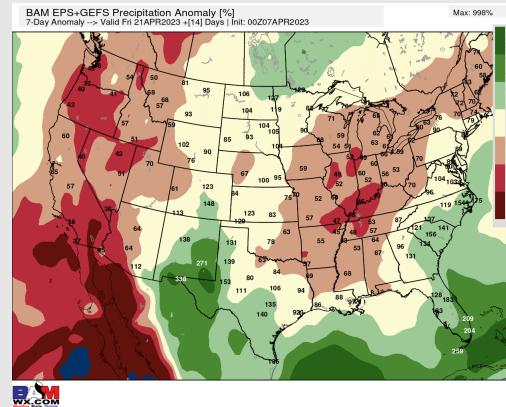
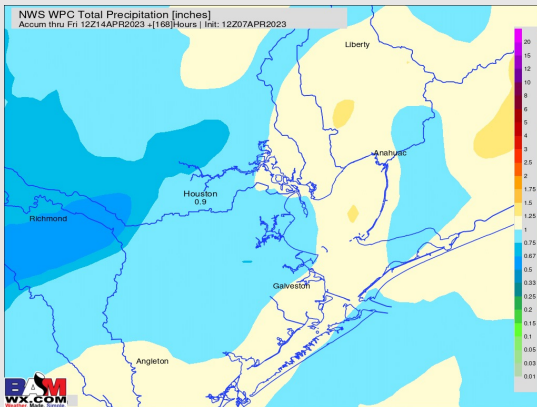
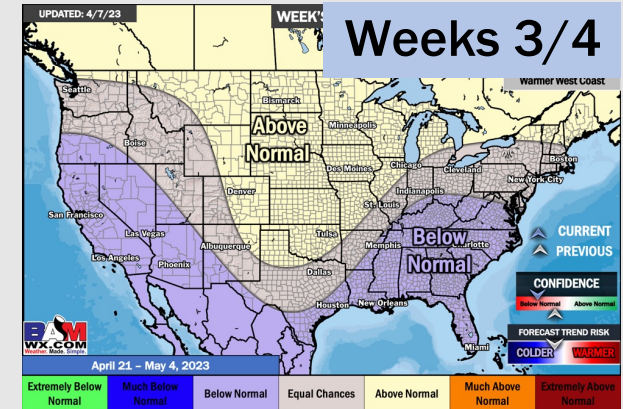
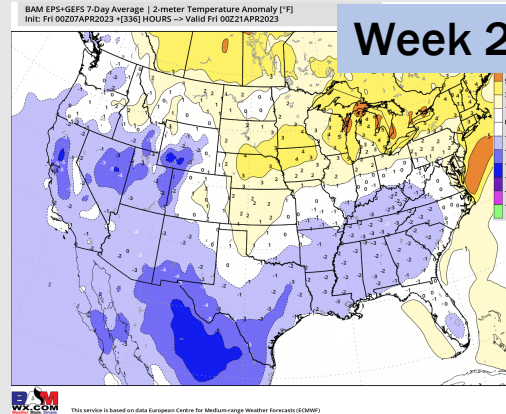
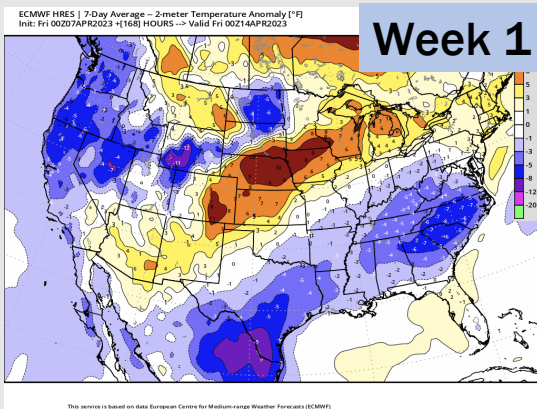


Wind Speed
6 PM CT



High Temps
Monday

Houston Pilots: 4/8/23



- Anticipating a dry rest of the weekend. Eyeing early to mid next week for increased rain chances once again. Temps will be below average for SE TX.
- Expecting near normal precipitation chances and below normal temperatures extending into the week 2 timeframe.
- Below normal temperatures and above normal chances for precipitation favored in the week 3/4 timeframe.