

Houston Pilots Forecast Package



Updated: 5:20 AM CT

Tuesday, March 28, 2023

Forecaster: Matthew Griffin

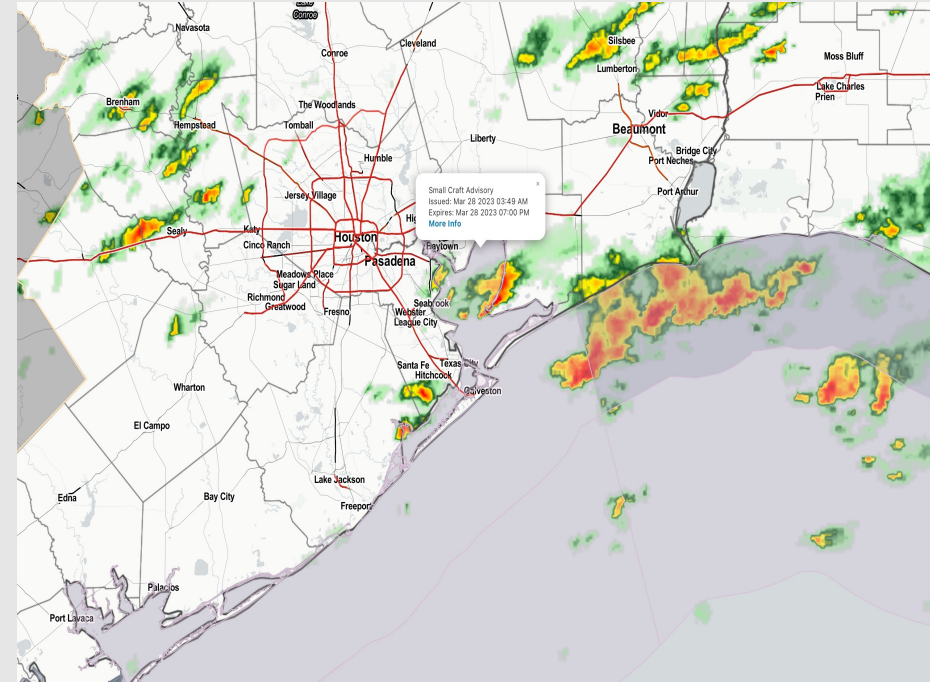
Weather Headlines

➤ **Fog threat has ended. Eying into the weekend for the potential for fog threats to come back.**

➤ **A few additional shots for rain/ storms this morning.**

➤ **Some elevated winds will be possible over the next few days (more info in following slides).**

➤ **Overall several minor chances for precipitation over the next few days with rainfall amounts generally light.**



Radar/NWS Alerts: 5:20 AM CT



As always, please do not hesitate to reach out to us with any forecast questions via the chat option on the Weather Porthole or our on-call number, **(317)-560-8122** press 1 for forecast questions.

Houston Pilots Extended Range Visibility Report



Friday 3/31/23

Winds out of the SE for most of the day along with low level moisture available will allow for a very low-end risk for fog development.



Sunday 4/2/23

Sea fog threats still linger on through Sunday as onshore flow will still be present due to high pressure sitting off to the East over the Gulf of Mexico.



Saturday 4/1/23

The threat for sea fog is once again possible into SAT AM with continued onshore flow.



Chance for Reduced Visibility

| | |
|-------------|----------|
| Friday AM | Possible |
| Friday PM | Possible |
| Saturday AM | Possible |
| Saturday PM | Possible |
| Sunday AM | Possible |
| Sunday PM | Possible |

Houston Pilots Wind Report



Confidence



Example

Sustained wind 13 Knots
Gusts 18 Knots
Wind from the N

WS: 13
G:18
N

| Time Knots | Tue 3am | Tue 4am | Tue 5am | Tue 6am | Tue 7am | Tue 8am | Tue 9am | Tue 10am | Tue 11am | Tue 12pm | Tue 1pm | Tue 2pm | Tue 3pm | Tue 4pm | Tue 5pm | Tue 6pm | Tue 7pm | Tue 8pm | Tue 9pm | Tue 10pm | Tue 11pm | Wed 12am | Wed 1am | Wed 2am | Wed 3am | Wed 4am | Wed 5am | Wed 6am | Wed 7am | Wed 8am | Wed 9am | Wed 10am | Wed 11am | Wed 12pm | Wed 1pm | Wed 2pm | | |
|-------------------|-----------|-----------|-----------|----------|-----------|-----------|-----------|-----------|-----------|-----------|-----------|-----------|-----------|-----------|-----------|-----------|-----------|-----------|-----------|-----------|-----------|-----------|-----------|-----------|-----------|-----------|-----------|-----------|-----------|-----------|-----------|-----------|-----------|-----------|-----------|-----------|-----------|-----------|
| 610 Bridge | 6 NNE | 5 NE | 8 ENE | 5 NE | 3 NE | 8 N | 10 NNE | 11 NNE | 12 NNE | 12 NNE | 13 NNE | 14 NNE | 13 NNE | 12 NNE | 13 NNE | 12 NNE | 10 NNE | 10 NNE | 10 NNE | 10 NNE | 10 NNE | 9 NNE | 9 NNE | 8 NNE | 9 NNE | 9 NNE | 9 NNE | 9 NNE | 9 NNE | 10 NNE | 9 NNE | 10 NNE | 9 NNE | 10 NNE | 9 NNE | 9 NNE | | |
| Kinder 1 | 6 NNE | 5 NE | 7 ENE | 5 NE | 3 NE | 8 N | 10 NNE | 11 NNE | 12 NNE | 12 NNE | 13 NNE | 14 NNE | 14 NNE | 13 NNE | 12 NNE | 13 NNE | 12 NNE | 10 NNE | 10 NNE | 10 NNE | 10 NNE | 9 NNE | 9 NNE | 8 NNE | 9 NNE | 9 NNE | 9 NNE | 9 NNE | 9 NNE | 10 NNE | 9 NNE | 10 NNE | 9 NNE | 10 NNE | 9 NNE | 9 NNE | | |
| Greens Bayou | 6 NNE | 5 NE | 5 ENE | 5 NE | 2 E | 8 N | 10 NNE | 11 NNE | 11 NNE | 12 NNE | 13 NNE | 14 NNE | 14 NNE | 12 NNE | 13 NNE | 12 NNE | 10 NNE | 10 NNE | 10 NNE | 10 NNE | 9 NNE | 9 NNE | 8 NNE | 9 NNE | 9 NNE | 9 NNE | 9 NNE | 9 NNE | 9 NNE | 9 NNE | 9 NNE | 9 NNE | 9 NNE | 9 NNE | 9 NNE | 9 NNE | | |
| Shell Crude | 14 NE | 16 E | 14 ENE | 14 NE | 9 SE | 17 N | 23 NNE | 22 NNE | 22 NNE | 20 NNE | 20 NNE | 22 NNE | 21 NNE | 21 NNE | 19 NNE | 20 NNE | 19 NNE | 16 NNE | 15 NNE | 16 NNE | 15 NNE | 14 NNE | 14 NNE | 15 NNE | 13 NNE | 14 NNE | 14 NNE | 13 NNE | 14 NNE | 13 NNE | 14 NNE | 13 NNE | 14 NNE | 13 NNE | 13 NNE | 12 NNE | 11 NNE | |
| Lynchburg Ferries | 5 NNE | 4 ESE | 3 NE | 3 NE | 5 SSW | 8 NNW | 10 NNE | 11 NNE | 11 NNE | 12 NNE | 13 NNE | 14 NNE | 14 NNE | 12 NNE | 13 NNE | 12 NNE | 10 NNE | 10 NNE | 10 NNE | 10 NNE | 9 NNE | 9 NNE | 10 NNE | 9 NNE | 9 NNE | 9 NNE | 9 NNE | 9 NNE | 9 NNE | 9 NNE | 9 NNE | 9 NNE | 9 NNE | 9 NNE | 9 NNE | 9 NNE | 9 NNE | |
| Exxon 3 | 4 ENE | 4 SE | 3 ENE | 5 NE | 2 S | 6 W | 10 NNE | 11 NNE | 11 NNE | 12 NNE | 13 NNE | 14 NNE | 14 NNE | 12 NNE | 14 NNE | 13 NNE | 11 NNE | 11 NNE | 11 NNE | 10 NNE | 9 NNE | 10 NNE | 10 NNE | 10 NNE | 10 NNE | 10 NNE | 10 NNE | 10 NNE | 10 NNE | 10 NNE | 10 NNE | 10 NNE | 10 NNE | 10 NNE | 10 NNE | 10 NNE | 10 NNE | |
| Morgans Point | 3 E | 4 E | 4 SSE | 6 NE | 4 E | 6 ESE | 11 N | 11 NNE | 11 NNE | 11 NNE | 13 NNE | 14 NNE | 14 NNE | 12 NNE | 14 NNE | 13 NNE | 12 NNE | 12 NNE | 12 NNE | 11 NNE | 11 NNE | 11 NNE | 11 NNE | 11 NNE | 11 NNE | 11 NNE | 11 NNE | 11 NNE | 11 NNE | 11 NNE | 11 NNE | 11 NNE | 11 NNE | 11 NNE | 11 NNE | 11 NNE | 11 NNE | |
| 75/76 | 4 ENE | 8 NE | 6 SE | 8 NE | 7 NE | 9 NE | 16 NNE | 15 NNE | 13 NNE | 11 NNE | 12 NNE | 14 NNE | 13 NNE | 13 NNE | 12 NNE | 16 NNE | 15 NNE | 14 NNE | 14 NNE | 14 NNE | 14 NNE | 14 NNE | 14 NNE | 16 NNE | 15 NNE | 16 NNE | 15 NNE | 16 NNE | 15 NNE | 16 NNE | 16 NNE | 15 NNE | 16 NNE | 15 NNE | 16 NNE | 15 NNE | 16 NNE | 15 NNE |
| 63/64 | 7 ENE | 9 NE | 8 ENE | 9 NE | 9 NE | 11 NE | 18 NNE | 17 NNE | 15 NNE | 13 NNE | 12 NNE | 13 NNE | 14 NNE | 14 NNE | 12 NNE | 16 NNE | 16 NNE | 16 NNE | 16 NNE | 16 NNE | 16 NNE | 16 NNE | 16 NNE | 16 NNE | 16 NNE | 16 NNE | 16 NNE | 16 NNE | 16 NNE | 16 NNE | 16 NNE | 16 NNE | 16 NNE | 16 NNE | 16 NNE | 16 NNE | 16 NNE | 16 NNE |
| 51/52 | 10 ENE | 11 ENE | 10 NNE | 9 NE | 10 NNE | 10 NE | 17 WSW | 18 NNE | 16 NNE | 15 NNE | 14 NNE | 15 NNE | 15 NNE | 15 NNE | 15 NNE | 12 NNE | 17 NNE | 16 NNE | 15 NNE | 16 NNE | 16 NNE | 16 NNE | 16 NNE | 16 NNE | 16 NNE | 16 NNE | 16 NNE | 16 NNE | 16 NNE | 16 NNE | 16 NNE | 16 NNE | 16 NNE | 16 NNE | 16 NNE | 16 NNE | 16 NNE | 16 NNE |
| 37/38 | 5 NE | 14 NE | 10 ENE | 9 NNE | 11 NE | 9 NE | 17 E | 18 NNE | 17 NNE | 15 NNE | 16 NNE | 15 NNE | 15 NNE | 12 NNE | 16 NNE | 16 NNE | 15 NNE | 15 NNE | 16 NNE | 15 NNE | 16 NNE | 16 NNE | 16 NNE | 16 NNE | 16 NNE | 16 NNE | 16 NNE | 16 NNE | 16 NNE | 16 NNE | 16 NNE | 16 NNE | 16 NNE | 16 NNE | 16 NNE | 16 NNE | 16 NNE | 16 NNE |
| 25/26 | 4 NE | 15 NE | 8 E | 9 ENE | 8 E | 8 SSE | 15 NNE | 17 NNE | 16 NNE | 14 NNE | 15 NNE | 14 NNE | 13 NNE | 12 NNE | 15 NNE | 14 NNE | 14 NNE | 14 NNE | 14 NNE | 14 NNE | 14 NNE | 14 NNE | 14 NNE | 14 NNE | 14 NNE | 14 NNE | 14 NNE | 14 NNE | 14 NNE | 14 NNE | 14 NNE | 14 NNE | 14 NNE | 14 NNE | 14 NNE | 14 NNE | 14 NNE | 14 NNE |
| 11/12 | 5 NE | 7 NE | 14 ENE | 10 NE | 8 ENE | 8 NNE | 11 SSE | 15 NNE | 15 NNE | 12 NNE | 12 NNE | 12 NNE | 12 NNE | 12 NNE | 12 NNE | 14 NNE | 13 NNE | 13 NNE | 14 NNE | 14 NNE | 14 NNE | 14 NNE | 14 NNE | 14 NNE | 14 NNE | 14 NNE | 14 NNE | 14 NNE | 14 NNE | 14 NNE | 14 NNE | 14 NNE | 14 NNE | 14 NNE | 14 NNE | 14 NNE | 14 NNE | 14 NNE |
| 1 & 2 Bravo | 10 NE | 13 NE | 14 ENE | 12 NE | 10 NE | 10 NNE | 11 NNE | 18 NNE | 17 NNE | 15 NNE | 14 NNE | 13 NNE | 11 NNE | 12 NNE | 13 NNE | 16 NNE | 16 NNE | 16 NNE | 17 NNE | 17 NNE | 17 NNE | 17 NNE | 17 NNE | 18 NNE | 19 NNE | 19 NNE | 20 NNE | 20 NNE | 20 NNE | 20 NNE | 21 NNE | 20 NNE | 21 NNE | 20 NNE | 19 NNE | 18 NNE | 17 NNE | 17 NNE |

Forecast Discussion

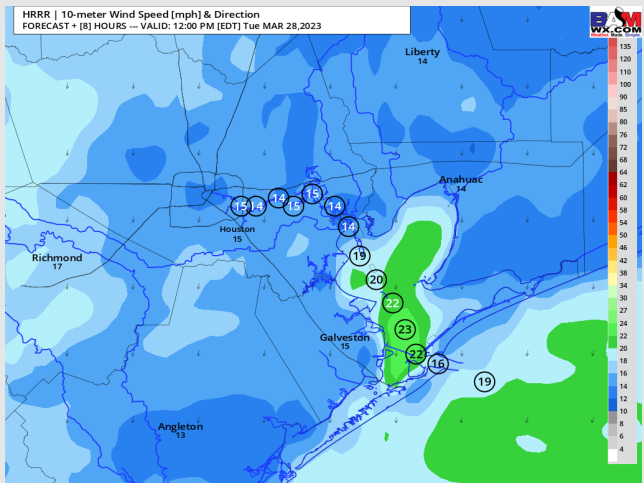
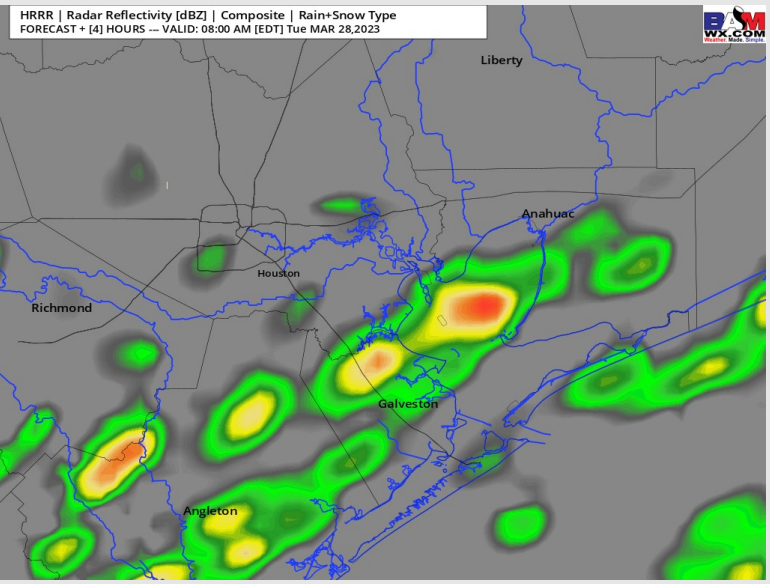
Precip: Based off latest radar trends, "severe" criteria storms likely will be hard to come by this AM. However, a stronger storm or two cannot be ruled out this am with gusts to 34 knots and small hail. Storm threat is anticipated to end by around 8 – 9 AM as a cold front drifts to the south. A very minor chance for a sprinkle exists towards midnight (5 – 10%).

Wind: Winds will slowly increase this morning with winds sustained around 13 – 16 knots for stations south of Morgan's Point by 8 AM out of the NE. After 8 AM winds start to veer more out of the NNE and continue to pick up late morning into the afternoon. Around 11 AM, winds from the NNE are anticipated to be sustained around 14 – 20 knots for stations south of Morgan's Point with gusts around 26 knots. Into the early afternoon, winds will weaken slightly and continue out of the NNE sustained around 12 – 17 knots around 6 PM. Gusts in the afternoon to 26 MPH will still be possible (mainly for stations south of Morgan's Point). Winds will start to weaken after sunset as winds continue out of the NNE. Towards the boarding station however, winds will continue to remain slightly elevated sustained around 13 – 17 knots with gusts up to near 20 knots.

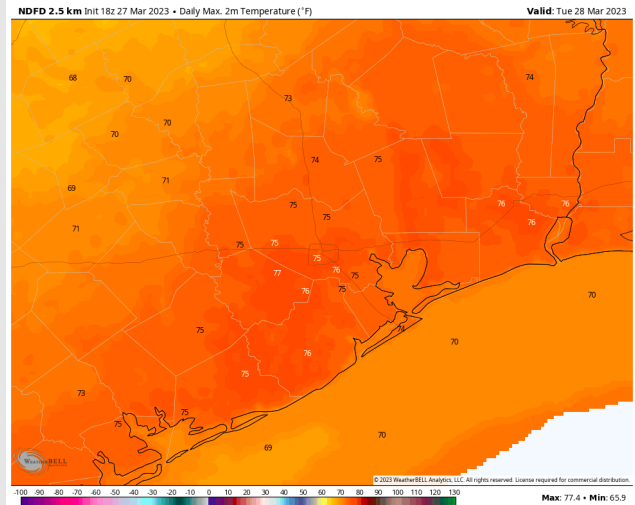
Temps: Favoring high temps Tuesday to be in the low to near 70s F for stations S of Morgan's Point with all other stations seeing temperatures in the mid to upper 70s F.

Visibility: Latest observations suggest that the fog threat is done this AM as storms/ a cold front makes its approach. If caught under a heavier pulse this morning, visibilities can be reduced but do not anticipate any additional issues from fog.

Precip Forecast: 7 AM CT



Wind Speed
11 AM CT



High Temps
Tuesday

Forecast Discussion

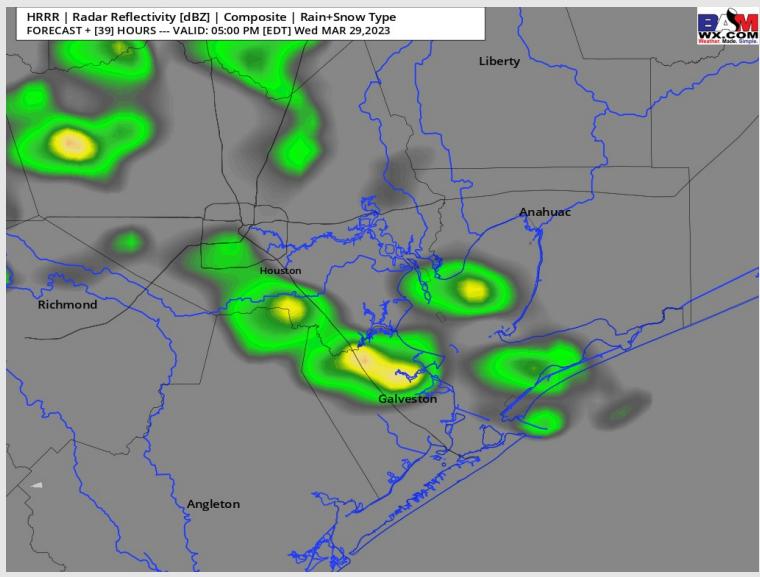
Precip: A mostly dry morning is anticipated with only isolated chances for a light drizzle/sprinkle. Slightly better shot for some showers exists in the afternoon around 2 – 8 PM (25%).

Wind: Winds north of Morgan’s Point in the AM are anticipated to be weak out of the NE sustained around 7 – 9 knots. Winds towards the boarding station will continue to remain elevated around 13 – 17 knots sustained (windiest towards the Boarding Station). Winds into the afternoon will slowly start to shift more out of the SE. Around 6 PM, are anticipated to be out of the ESE sustained around 12 – 16 knots near the Boarding Station. Winds at the Boarding Station will continue to see these type of winds through the evening. Calmer winds for station towards Morgan’s Point and points north.

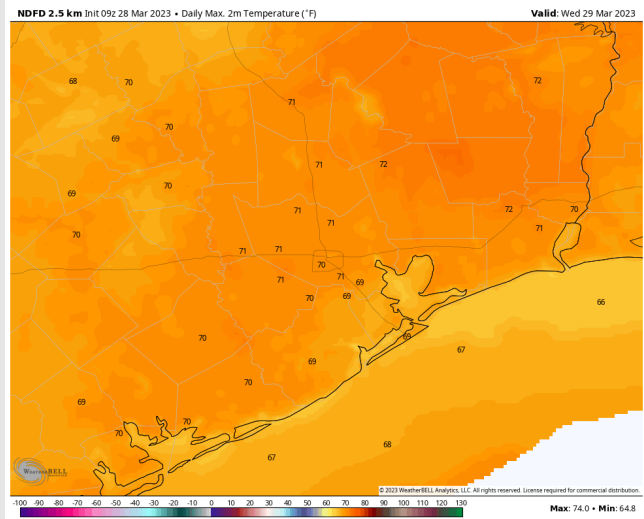
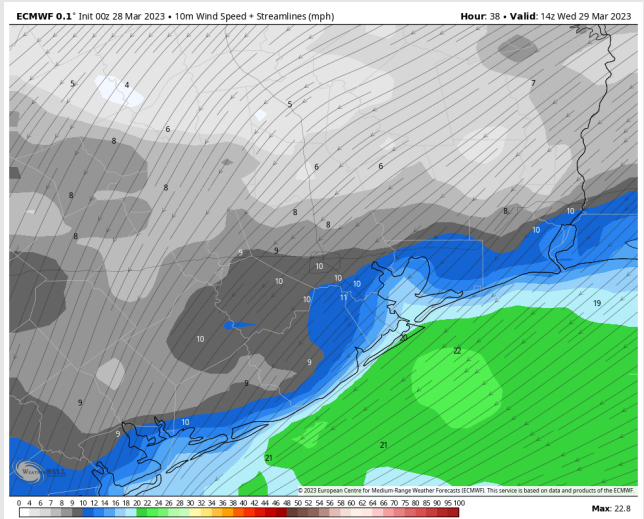
Temps: High Temperatures into the upper 60’s F to lower 70’s F anticipated over open waters.

Visibility: No fog is favored at this time as lower levels of the atmosphere will be rather dry.

Precip Forecast: 4 PM CT



Wind Speed
9 AM CT



High Temps
Wednesday

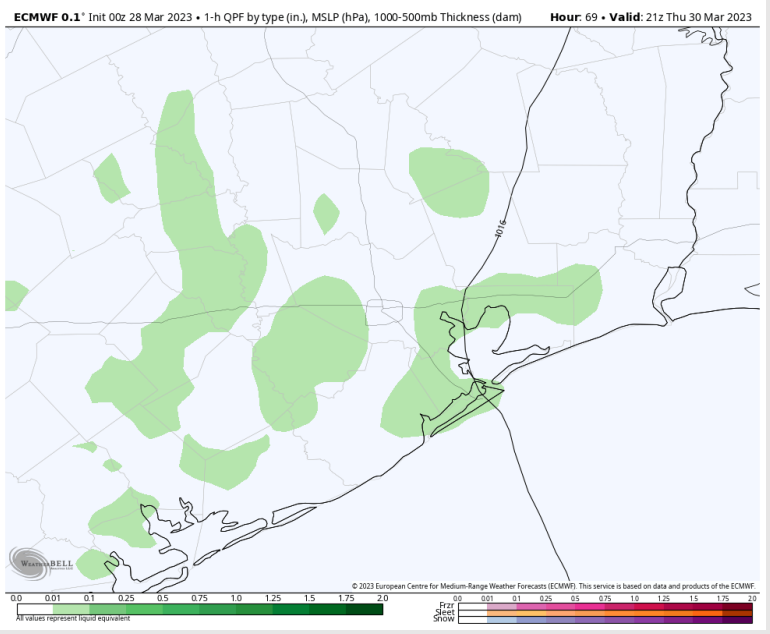
Houston Pilots: Thur. 3/30/2023



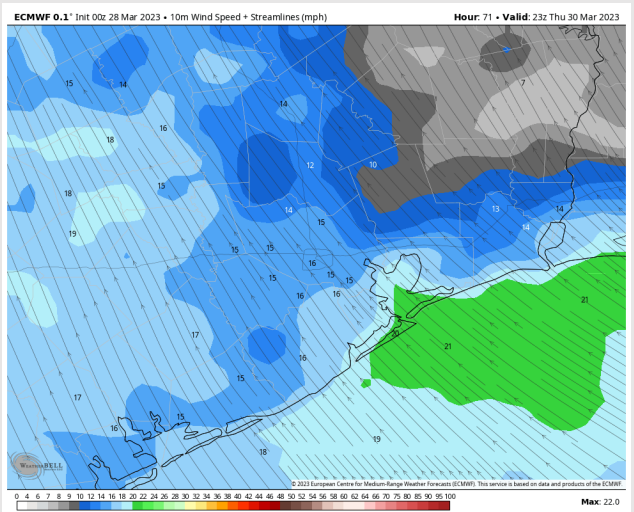
Forecast Discussion

- Precip:** Spotty chances for some showers are possible in the afternoon (20%). Current thinking is around 3 PM – 7 PM.
- Wind:** SE winds will be present all day on THU. Winds in the AM will 8 – 12 knots south of Morgan’s Point and will increase into the afternoon/ evening. Winds after 2 - 3 PM THU are anticipated to be sustained near 15 – 18 knots with gusts near 23 knots possible.
- Temps:** High temperatures Thursday will be in the mid 70s F north of Morgan’s Point and in the lower 70s F south of Morgan’s Point.
- Visibility:** Do not anticipate Fog for THU AM at this time but will continue to monitor for the potential.

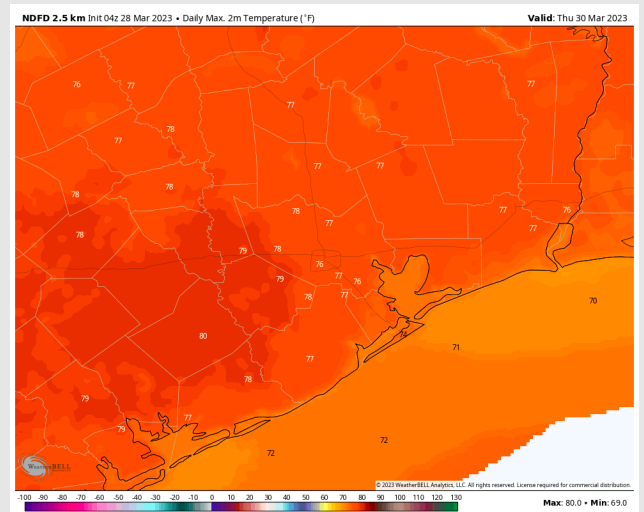
Precip Forecast: 4 PM CT



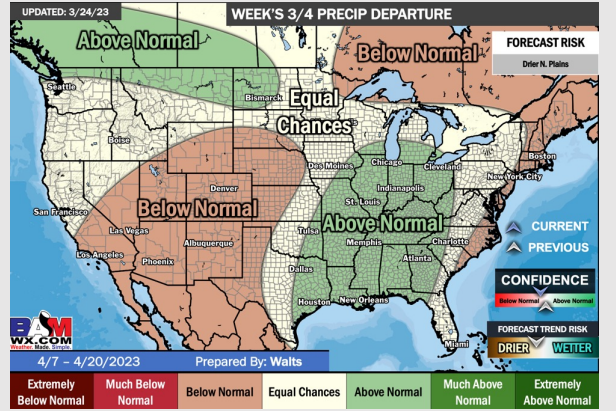
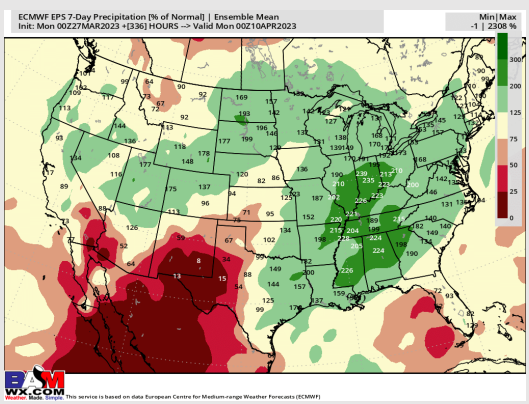
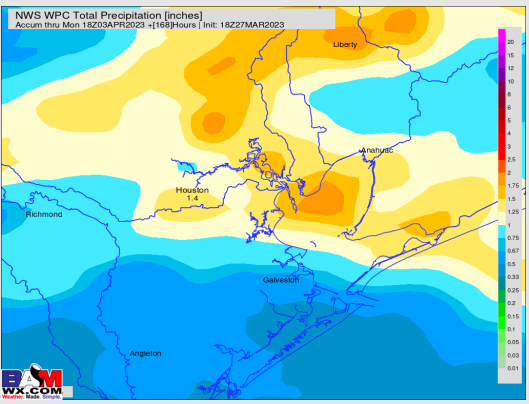
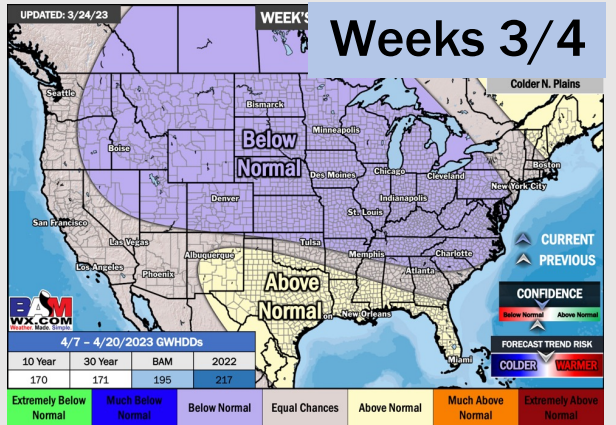
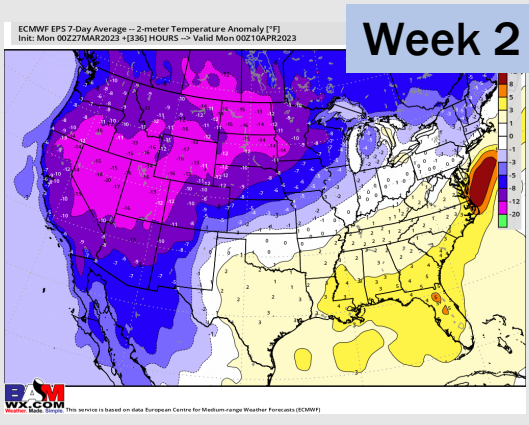
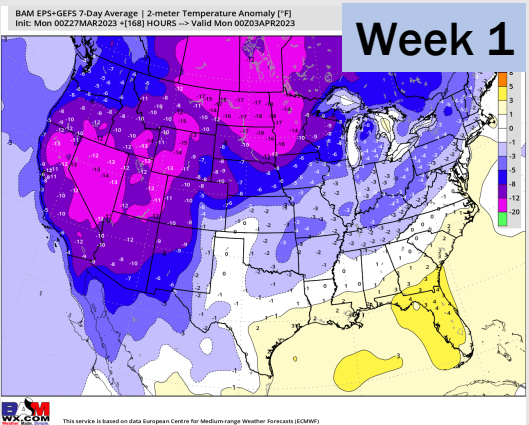
Wind Speed
6 PM CT



High Temps
Thursday



Houston Pilots: 3/28/23



- There will be a few rain chances this week that are generally on the lighter side. Ongoing rain likely will be the heaviest over the next 7 days but will need to watch how things trend for SUN (current thinking is heaviest goes to the north). Temperatures are expected to be slightly above normal over the next seven days.
- Expecting near to slightly above normal precipitation chances and above normal temperatures extending into the week 2 timeframe.
- Anticipating above normal temperatures and above normal chances for precipitation favored in the week 3/4 timeframe.