

Houston Pilots Forecast Package



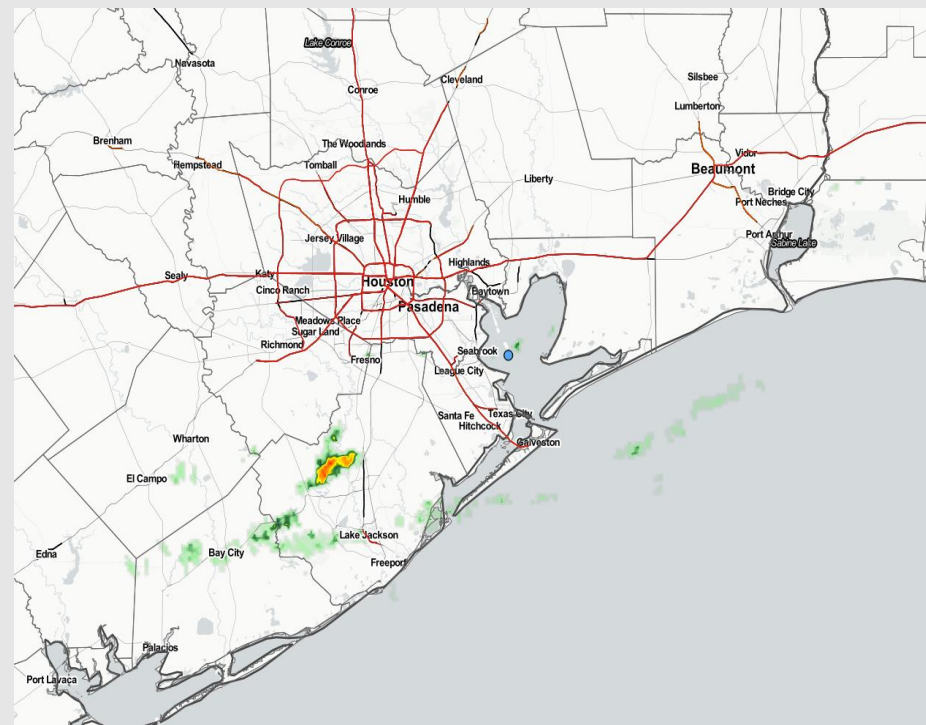
Updated: 5:00 AM CT

Saturday, March 25, 2023

Forecaster: Jonathan Kipper

Weather Headlines

- **Threat for visibility issues continues to be possible this morning.** More info on the following slides.
- Light, scattered showers possible through the AM, with dry conditions through SUN AM.
- Calmer winds anticipated this weekend throughout the entire area.



Radar/NWS Alerts: 5:00 AM CT

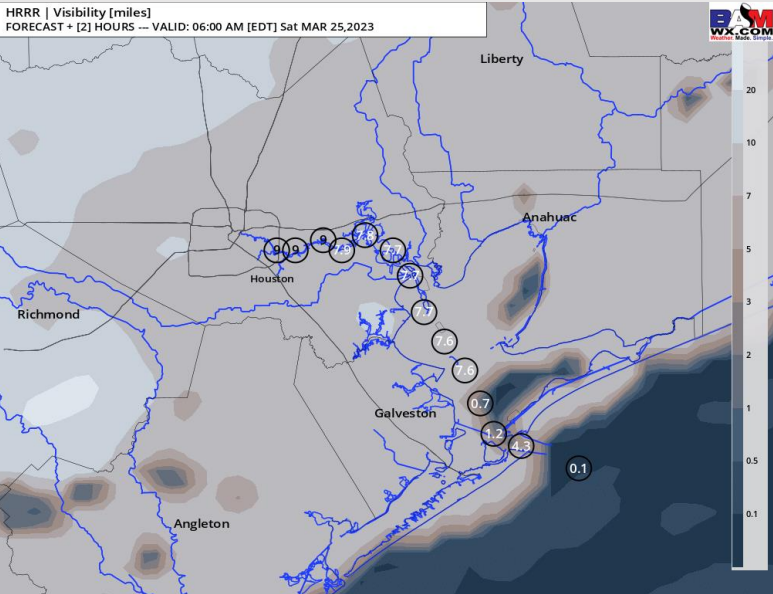


As always, please do not hesitate to reach out to us with any forecast questions via the chat option on the Weather Porthole or our on-call number, **(317)-560-8122** press 1 for forecast questions.

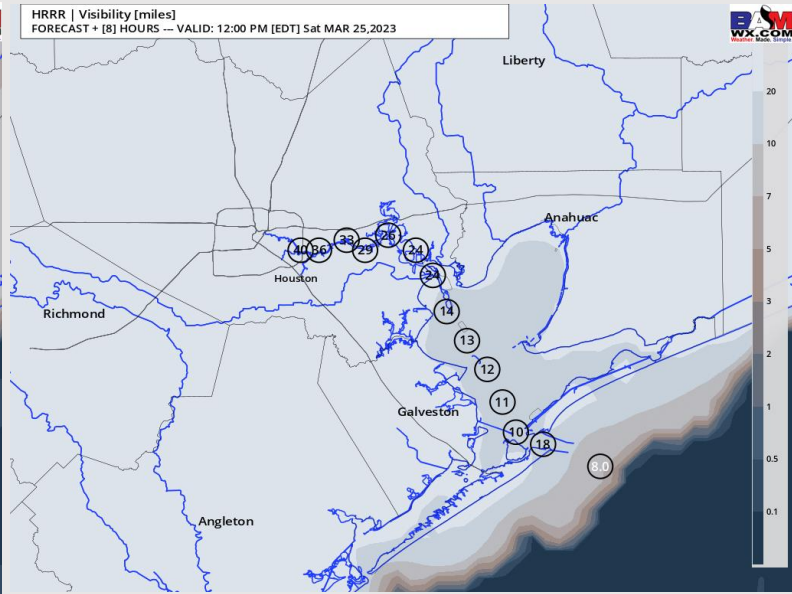
Houston Pilots Visibility Report



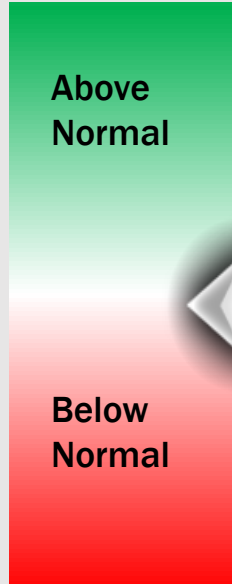
5 AM CT SAT VISIBILITY



11 AM CT SAT VISIBILITY



Confidence



TIMEFRAME DISCUSSED

THREAT

NOW - 11 AM SAT

Low - Med

- Between now and 8 AM, anticipating reduced visibility of 2-5 miles across all stations South of Morgan's Point and patchy fog bringing reduced visibility of 1 mile or less possible. The greatest areas at risk will be near the boarding station.
- After 8 AM, things will start to clear up across the area. Areas near the boarding station may still see some patchy fog through 11 AM with reduced visibilities of 2-5 miles possible.

Houston Pilots Extended Range Visibility Report



Tuesday 3/28/23

Winds out of the NE will make fog unlikely on Tuesday.

Confidence



Thursday 3/30/23

Sustained winds out of the SE and low level moisture will make fog possible however foggy conditions not favored.

Confidence



Wednesday 3/29/23

Winds will start out of the NE during the AM hours on Wednesday, and then shift to out of the SE by the early afternoon hours. Although low level moisture will not be great, sea fog could be possible.

Confidence



Chance for Reduced Visibility

Tuesday AM	Unlikely
Tuesday PM	Unlikely
Wednesday AM	Possible
Wednesday PM	Possible
Thursday AM	Possible
Thursday PM	Possible

Houston Pilots Visibility Report



More info regarding fog threats in visibility slide.

Time	Sat 3am	Sat 4am	Sat 5am	Sat 6am	Sat 7am	Sat 8am	Sat 9am	Sat 10am	Sat 11am	Sat 12pm	Sat 1pm	Sat 2pm	Sat 3pm	Sat 4pm	Sat 5pm	Sat 6pm	Sat 7pm	Sat 8pm	Sat 9pm	Sat 10pm	Sat 11pm	Sun 12am	Sun 1am	Sun 2am	Sun 3am	Sun 4am	Sun 5am	Sun 6am	Sun 7am	Sun 8am	Sun 9am	Sun 10am	Sun 11am	Sun 12pm	Sun 1pm	Sun 2pm	
610 Bridge	8	8	10	10	10	10	10	10	10	10	10	10	10	10	10	10	10	10	10	10	10	10	10	10	10	10	10	10	10	9	9	8	9	8	7	7	
Kinder 1	8	8	10	10	10	10	10	10	10	10	10	10	10	10	10	10	10	10	10	10	10	10	10	10	10	10	10	10	10	8	9	8	9	8	7	7	
Greens Bayou	8	8	10	10	10	10	10	10	10	10	10	10	10	10	10	10	10	10	10	10	10	10	10	10	10	10	10	10	10	8	8	8	9	8	7	7	
Shell Crude	8	8	10	10	10	10	10	10	10	10	10	10	10	10	10	10	10	10	10	10	10	10	10	10	10	10	10	10	10	8	8	8	8	8	6	7	
Lynchburg Ferries	7	8	10	10	10	10	10	10	10	10	10	10	10	10	10	10	10	10	10	10	10	10	10	10	10	10	10	10	10	8	8	8	8	8	6	6	
Exxon 3	7	8	8	10	10	10	10	10	10	10	10	10	10	10	10	10	10	10	10	10	10	10	10	10	10	10	10	10	10	6	7	7	7	7	6	6	
Morgans Point	7	7	7	10	10	10	10	10	10	10	10	10	10	10	10	10	10	10	10	10	10	10	10	9	9	10	10	10	10	10	6	6	6	6	6	6	6
75/76	7	7	7	10	10	10	10	10	10	10	10	10	10	10	10	10	10	10	10	10	10	10	10	9	7	10	10	10	8	8	6	6	6	6	6	6	6
63/64	7	7	7	10	10	10	10	10	10	10	10	10	10	10	10	10	10	10	10	10	10	10	10	7	7	8	10	9	8	7	5	6	6	6	6	6	6
51/52	7	7	7	10	10	10	10	10	10	10	10	10	10	10	10	10	10	10	10	10	10	10	10	6	7	8	9	8	7	6	5	5	4	5	5	5	6
37/38	7	7	7	7	10	10	10	10	10	10	10	10	10	10	10	10	10	10	10	10	10	10	8	6	7	8	8	8	7	6	4	4	4	4	5	5	6
25/26	6	7	7	7	10	10	10	10	10	10	10	10	10	10	10	10	10	10	10	10	10	10	6	6	7	8	8	7	7	6	4	3	3	4	5	5	5
11/12	0.22	7	7	7	10	10	10	10	10	10	10	10	10	10	10	10	10	10	10	10	10	7	6	6	7	8	8	7	7	6	4	3	3	4	4	5	5
1 & 2 Bravo	0.11	0.32	6	4	10	10	10	10	10	10	10	10	10	10	10	10	10	10	10	8	7	5	4	3	3	4	5	4	4	4	3	3	2	3	3	4	3

Houston Pilots Wind Report



Example

Sustained wind 13 Knots
Gusts 18 Knots
Wind from the N

WS: 13
G:18
N

Time Knots	Sat 3am	Sat 4am	Sat 5am	Sat 6am	Sat 7am	Sat 8am	Sat 9am	Sat 10am	Sat 11am	Sat 12pm	Sat 1pm	Sat 2pm	Sat 3pm	Sat 4pm	Sat 5pm	Sat 6pm	Sat 7pm	Sat 8pm	Sat 9pm	Sat 10pm	Sat 11pm	Sun 12am	Sun 1am	Sun 2am	Sun 3am	Sun 4am	Sun 5am	Sun 6am	Sun 7am	Sun 8am	Sun 9am	Sun 10am	Sun 11am	Sun 12pm	Sun 1pm	Sun 2pm	
610 Bridge	3	2	3	3	3	3	3	7	6	6	6	6	5	4	4	5	5	4	4	3	3	2	3	3	3	4	3	3	3	3	4	5	5	6	6	6	
	7	7	6	4	5	4	7	16	11	10	11	11	10	8	7	5	5	5	5	5	5	4	4	4	4	5	6	5	5	5	6	8	8	9	10	9	
	W	W	SW	W	WSW	WSW	NW	NW	NNW	NNW	NNW	NNW	NW	NW	NNW	SSE	S	S	SSW	SSW	SW	SW	SW	SSE	ENE	NE	ENE	E	ENE	E	E	ESE	ESE	ESE	ESE		
Kinder 1	3	2	4	3	3	3	3	7	6	6	6	6	5	5	4	4	5	4	3	3	3	3	3	SSE	ENE	NE	ENE	E	ENE	E	E	ESE	ESE	ESE	ESE		
	7	7	7	5	5	4	7	16	11	9	10	10	10	8	6	5	5	5	5	5	5	4	4	5	5	7	6	5	5	6	6	8	8	9	10	9	
Greens Bayou	W	W	WSW	W	WSW	WSW	NW	NW	NNW	NNW	NNW	NW	NW	NW	WNW	NW	SE	SSE	S	SSW	SSW	SW	SW	SSE	ENE	NE	ENE	E	ENE	E	E	E	ESE	ESE	ESE	ESE	
	3	2	4	3	3	3	3	6	6	6	6	5	4	3	4	5	4	4	3	3	3	3	3	SSE	ENE	NE	ENE	E	ENE	E	E	E	ESE	ESE	ESE	ESE	
	7	7	7	7	6	5	7	16	11	9	9	9	10	7	5	5	5	4	5	5	5	4	4	5	5	7	6	6	6	6	6	8	8	9	10	9	
Shell Crude	WSW	W	WSW	W	WSW	W	NW	NW	NNW	NNW	NW	SW	W	W	SW	SE	SE	S	SSW	SSW	SW	SW	S	NE	NE	ENE	E	ENE	E	ESE	E	ESE	ESE	ESE	ESE	ESE	
	3	2	4	3	3	3	4	6	5	6	7	6	4	3	3	5	5	4	4	3	3	3	3	3	4	3	4	4	4	4	4	5	5	6	7	6	
Lynchburg Ferries	W	W	W	W	W	W	NW	NW	NNW	N	NW	SW	S	SSW	SSW	SE	SE	SSE	S	SSW	SSW	SW	SW	S	NE	NE	ENE	E	E	E	ESE	E	ESE	ESE	ESE	ESE	
	3	2	4	3	3	3	4	6	5	6	7	6	4	3	3	5	5	4	4	3	3	3	3	4	4	4	4	4	4	4	4	5	5	6	6	7	
Lynchburg Ferries	7	6	7	7	6	6	8	15	12	9	9	10	9	7	7	6	5	5	5	4	5	4	4	5	6	7	6	6	6	6	6	8	8	9	10	10	
	W	WSW	W	WNW	WSW	W	NW	NW	NNW	NNW	NW	SW	SE	ENE	E	NE	ESE	SE	S	SSW	SSW	SW	SW	SE	NE	NE	ENE	E	ENE	E	ESE	E	ESE	ESE	ESE	ESE	
Exxon 3	2	3	4	3	3	4	4	5	6	6	7	6	4	3	4	5	5	4	4	3	3	3	3	4	4	4	4	4	4	4	5	5	6	6	7	7	
	7	6	8	7	7	7	8	13	12	10	9	9	9	7	6	7	6	5	5	5	5	5	5	6	6	6	6	6	6	6	7	8	8	9	10	10	
Exxon 3	NW	W	W	WNW	W	WNW	NW	NW	NNW	NNW	NNW	NW	SW	E	NE	E	SE	SSE	S	S	SSW	SW	SW	S	NE	ENE	ENE	E	E	ESE	ESE	E	ESE	ESE	ESE	ESE	
	2	4	4	3	4	4	4	6	6	7	7	6	4	4	5	6	6	6	5	4	4	4	4	5	4	5	5	5	5	5	5	6	6	7	7	7	
Morgans Point	8	8	8	8	7	8	8	11	12	10	9	8	6	6	7	8	8	7	6	5	5	5	5	5	6	6	6	6	6	6	7	8	9	9	10	11	
	NW	WNW	W	WNW	WNW	WNW	NW	NW	NNW	NNW	NNW	NW	SSW	SE	ENE	ESE	SSE	SSE	S	S	SSW	SW	WSW	SSE	NE	ENE	ENE	E	E	E	ESE	ESE	E	ESE	ESE	ESE	
75/76	5	5	5	6	2	4	5	3	6	7	6	4	4	4	6	8	8	8	7	5	5	5	4	4	4	5	5	5	5	6	6	7	7	7	7	8	
	9	9	9	10	6	7	9	13	11	10	8	6	7	9	9	9	9	7	6	6	5	5	4	4	5	6	6	7	7	8	8	9	10	11	12		
63/64	WNW	WNW	WNW	NW	WSW	NW	NW	WNW	NW	NNW	NW	SSW	ESE	ESE	ESE	SE	SSE	SSE	S	S	SSW	SW	WSW	E	ENE	ENE	E	E	ESE	E	E	ESE	ESE	ESE	ESE	ESE	
	6	6	5	6	2	4	7	3	5	6	5	3	3	5	7	8	9	8	6	5	5	4	3	3	4	5	5	5	6	6	7	7	8	7	8	9	
63/64	10	9	9	10	4	8	10	8	13	11	10	8	6	6	8	9	10	9	7	6	6	5	4	4	4	6	6	6	7	7	8	8	10	11	12	13	
	WNW	W	WNW	WNW	SW	NW	NW	WNW	NNW	NW	W	S	ESE	ESE	E	SE	SSE	SSE	S	S	SSW	SSW	WSW	E	ENE	ENE	E	E	E	ESE	E	ESE	ESE	ESE	ESE	ESE	
51/52	5	6	5	5	4	6	7	4	6	5	6	3	2	3	4	8	8	7	6	5	5	4	3	3	3	5	5	5	6	6	7	7	7	7	8	8	
	8	9	8	9	5	9	11	8	13	11	10	8	6	7	9	9	8	7	6	6	6	4	4	3	4	5	5	5	6	7	8	8	9	11	12	13	
37/38	W	WNW	WNW	W	WSW	NW	NW	NW	NNW	NNW	NNW	NW	SSE	ESE	E	SE	SSE	SSE	S	S	SSW	SSW	WSW	E	E	E	E	E	ESE	E	E	ESE	ESE	ESE	ESE	ESE	
	4	6	6	6	6	7	6	4	7	6	6	4	3	3	7	7	6	5	4	4	4	3	3	3	4	4	4	4	5	5	7	7	8	8	9	10	
37/38	6	9	8	8	8	10	10	8	13	12	10	9	7	6	6	8	8	7	6	5	6	5	4	3	4	4	4	4	5	6	6	7	8	9	11	12	13
	W	NW	W	W	NW	NNW	NW	NW	NNW	NNW	NW	WNW	SSW	ESE	ENE	SE	SSE	S	S	S	SSW	SW	E	E	E	E	E	E	E	E	E	ESE	ESE	ESE	ESE	ESE	
25/26	5	6	5	6	8	7	5	4	6	7	6	6	5	4	3	6	6	5	5	4	4	3	3	3	4	4	4	4	5	6	7	8	10	11	12	12	
	8	8	9	9	11	11	9	7	12	12	10	9	8	6	5	7	8	7	6	5	6	5	4	4	4	4	4	4	5	6	7	8	10	11	12	12	
11/12	W	NW	W	WNW	NW	NNW	NNW	NNW	NNW	NW	WNW	WNW	SW	SE	NE	SE	SSE	SSE	S	S	SSW	S	ESE	E	E	E	E	E	E	E	E	ESE	ESE	ESE	ESE	ESE	
	6	8	3	7	6	3	7	6	3	2	4	5	5	4	3	6	6	6	5	4	5	4	4	4	4	4	4	5	5	6	7	8	9	9	9	10	
11/12	10	8	7	7	13	10	8	5	9	11	9	9	8	6	4	7	8	7	6	6	6	5	5	5	4	4	4	5	5	6	7	8	9	10	11	12	12
	WSW	NW	W	WSW	NW	NW	NW	WNW	NW	NW	NW	NNW	NW	SW	E	SSE	SSE	SSE	SSE	S	S	S	S	SE	E	E	E	E	E	E	E	ESE	ESE	ESE	ESE	ESE	
1 & 2 Bravo	6	7	5	3	5	4	2	1	2	1	0	2	4	4	6	7	7	7	7	5	6	5	4	4	4	4	4	5	6	6	7	8	8	10	10	10	10
	12	9	7	5	9	10	5	3	3	6	6	6	7	5	6	7	8	8	7	7	7	6	6	5	5	5	5	6	7	8	9	10	11	11	12	12	
1 & 2 Bravo	WSW	WNW	W	W	NW	NNE	ESE	SSE	ESE	ENE	S	SW	WSW	SW	SSE	SSE	SSE	SSE	SSE	SSE	S	SSE	SSE	SE	ESE	E	E	E	E	E	E	ESE	ESE	ESE	ESE	ESE	

Houston Pilots: Sat. 3/25/2023

Forecast Discussion

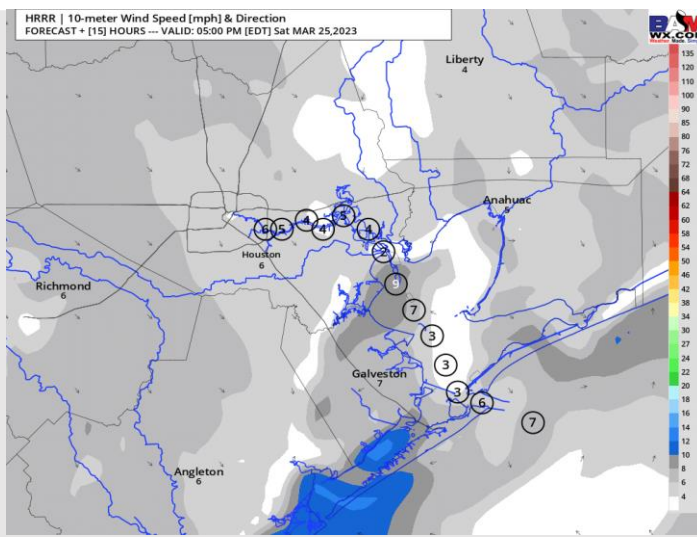
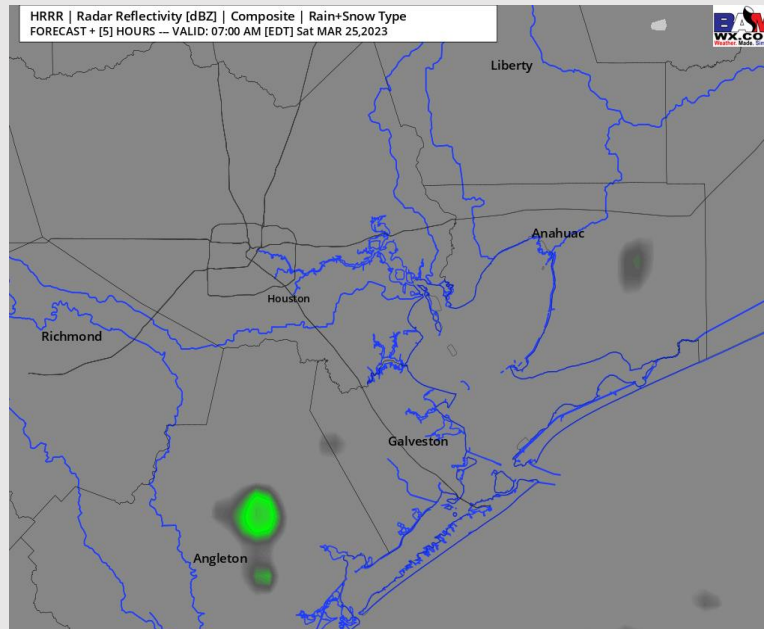
Precip: Anticipating isolated showers to continue through 7 AM, the favoring dry conditions throughout the rest of the day today.

Wind: Winds this morning will be from out of the NW. Winds will then shift to the S/SE by 6 PM. Wind speeds will be calm at 3-8 kts for the entire day, with an occasional pocket of wind south of Morgan's Point at 7-12 kts.

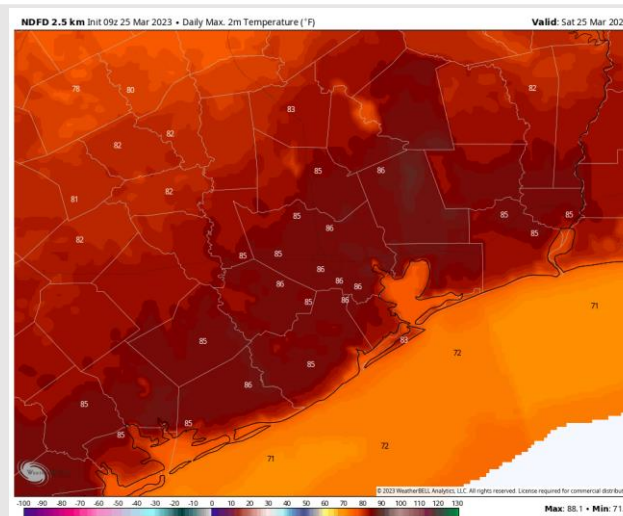
Temps: Anticipating high temperatures today will be in the low 70s F south of Morgan's Point and mid 80s F for the other stations.

Visibility: Fog is expected to continue this morning. View visibility report for more details.

Precip Forecast: 6 AM CT



Wind Speed
4 PM CT



High Temps
Today

Houston Pilots: Sun. 3/26/2023

Forecast Discussion

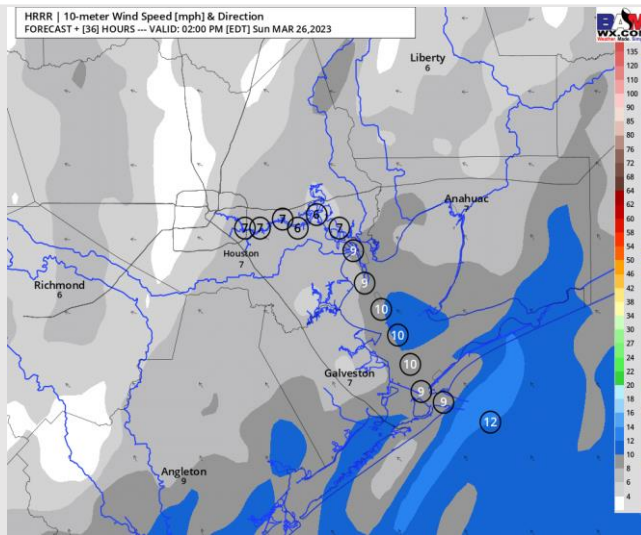
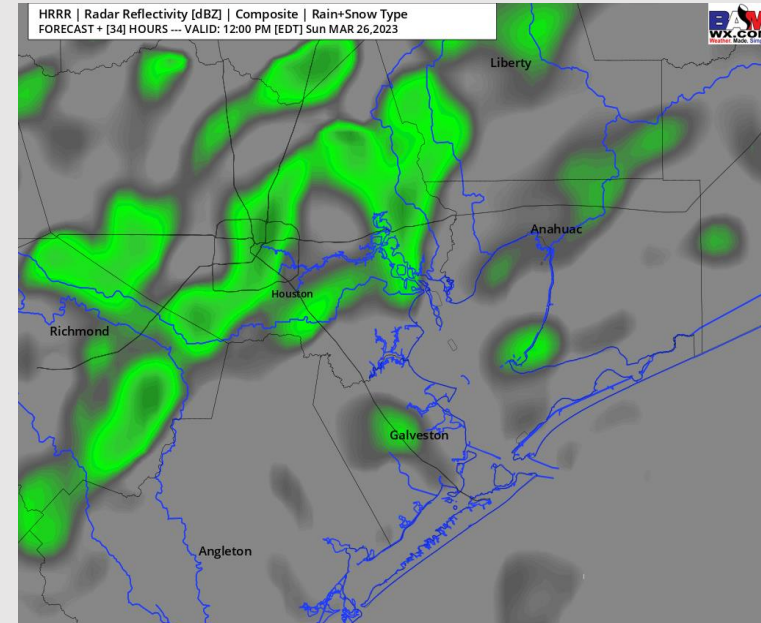
Precip: Favoring dry conditions until 8-9 AM CT Sunday. After 9 AM, favoring a 50-60% chance for showers/thunderstorms until 4 PM. After 4 PM, chances will drop to 20-30% for the rest of the day.

Wind: Favoring winds to be out of the SSE until around 5 AM CT when winds shift to out of the E until gradually shifting back to out of the SSE by 10 AM and remain that way for the rest of the day. Winds will be at 3-12 kts across all stations throughout the day Sunday.

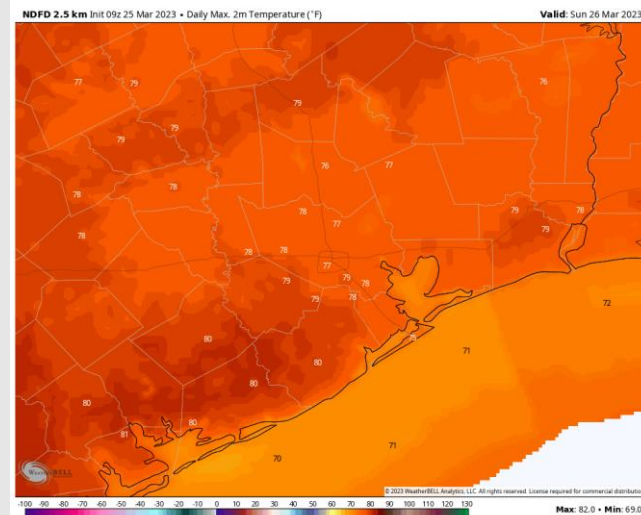
Temps: High temps Sunday will be in the mid to upper 70s F across all stations.

Visibility: Winds out of the S accompanied by low level moisture keep sea fog risks in play, but very low confidence and potential.

Precip Forecast: 11 AM CT



Wind Speed
1 PM CT



High Temps
Sunday

Houston Pilots: Mon. 3/27/2023

Forecast Discussion

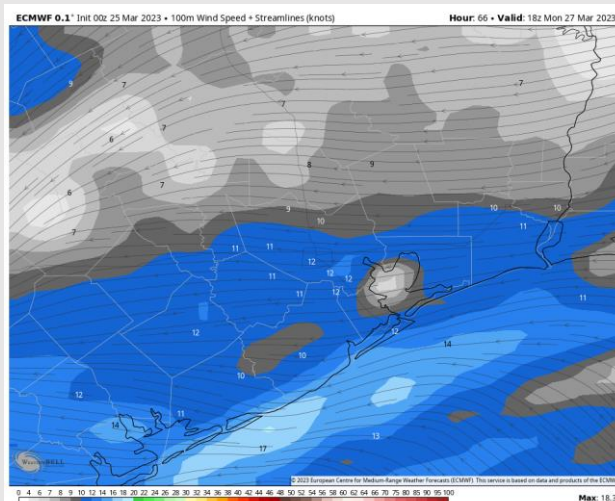
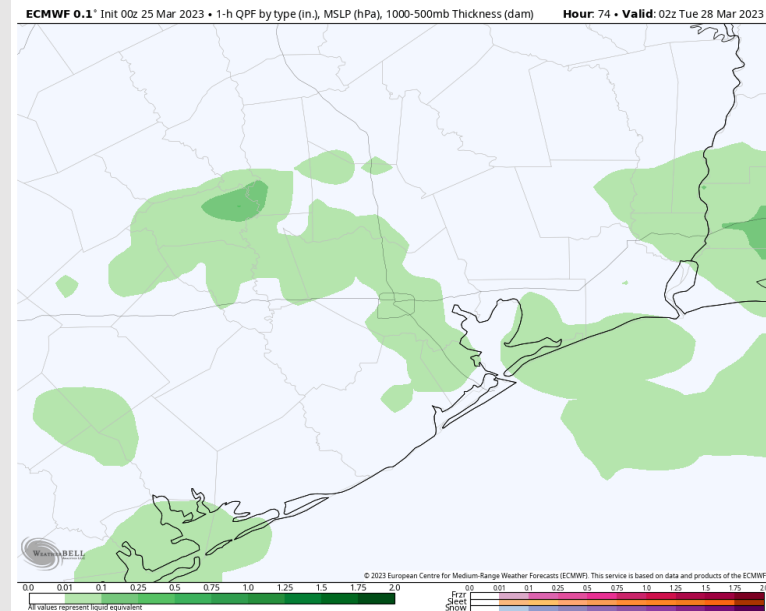
Precip: Favoring a 10-20% chance for scattered showers throughout the AM. Shower and storm chances expected to increase to 70% getting into the early afternoon and evening.

Wind: Sustained winds will begin calm through the AM at 3 – 8 kts out of the ESE. Winds will then pick up after the lunch timeframe to 8 - 13 kts across all stations. As we get near 8 PM, winds N of Morgan's Point will again begin to calm to 3 – 8 MPH continuing through the rest of the evening.

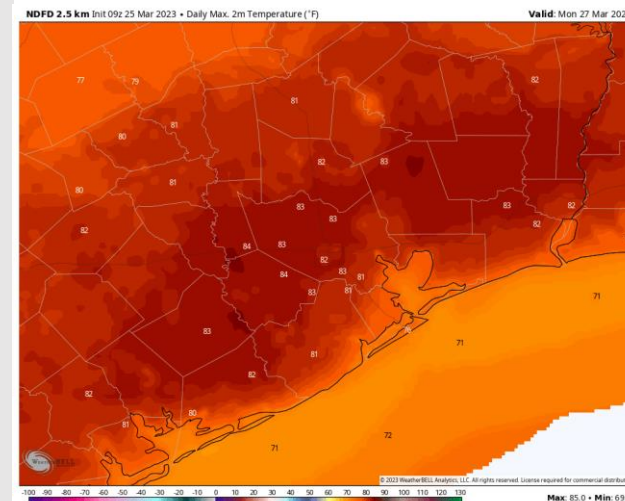
Temps: High temperatures Monday afternoon in the low 70s F for the Boarding Station and for stations south of Morgan's Point with stations north of Morgan's Point seeing high temps in the low 80s F.

Visibility: Not anticipating any visibility concerns at this time.

Precip Forecast: 9 PM CT

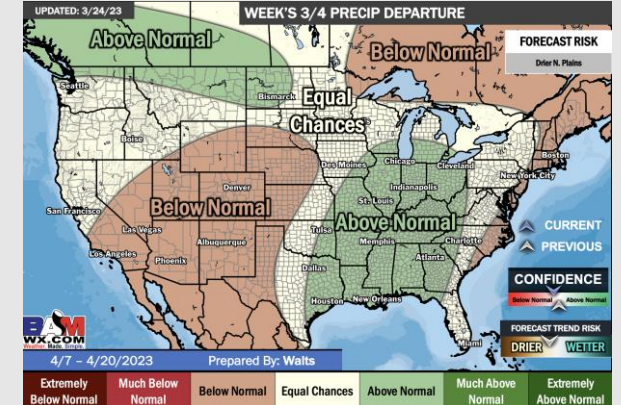
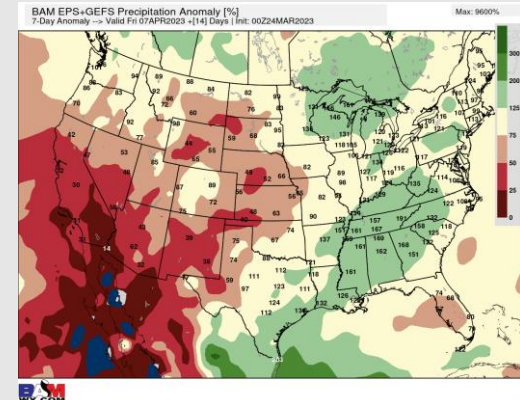
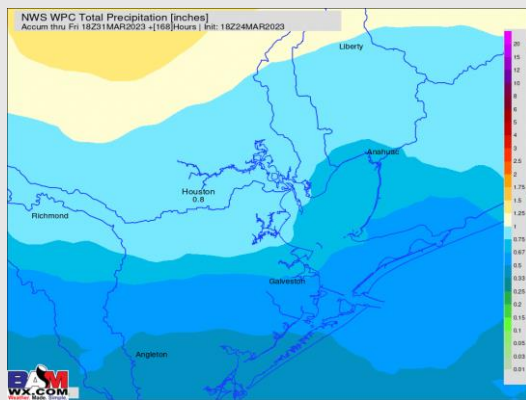
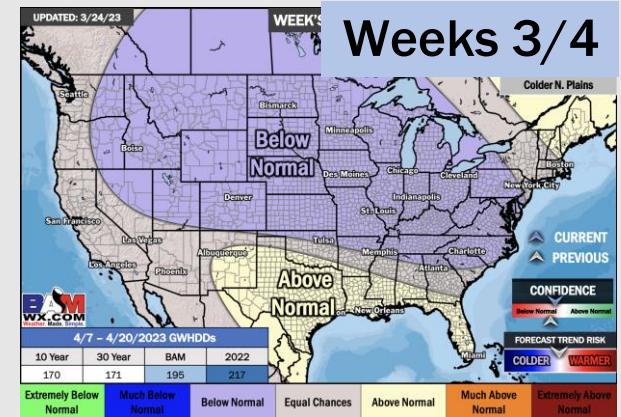
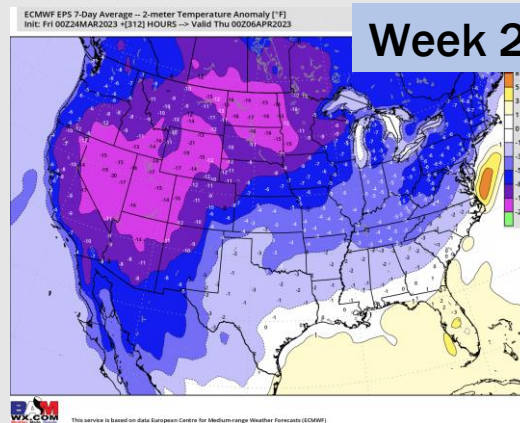
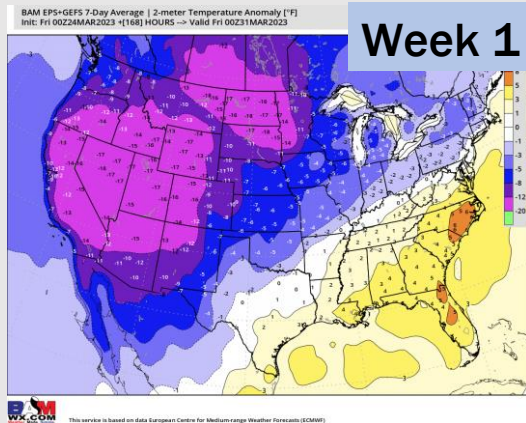


Wind Speed
1 PM CT



High Temps
Monday

Houston Pilots: 3/25/2023



- Rain chances expected early next week. Temperatures are expected to be slightly above normal over the next seven days.
- Expecting above normal precipitation chances and normal temperatures extending into the week 2 timeframe.
- Anticipating above normal temperatures and above normal chances for precipitation favored in the week 3/4 timeframe.