

# Houston Pilots Forecast Package



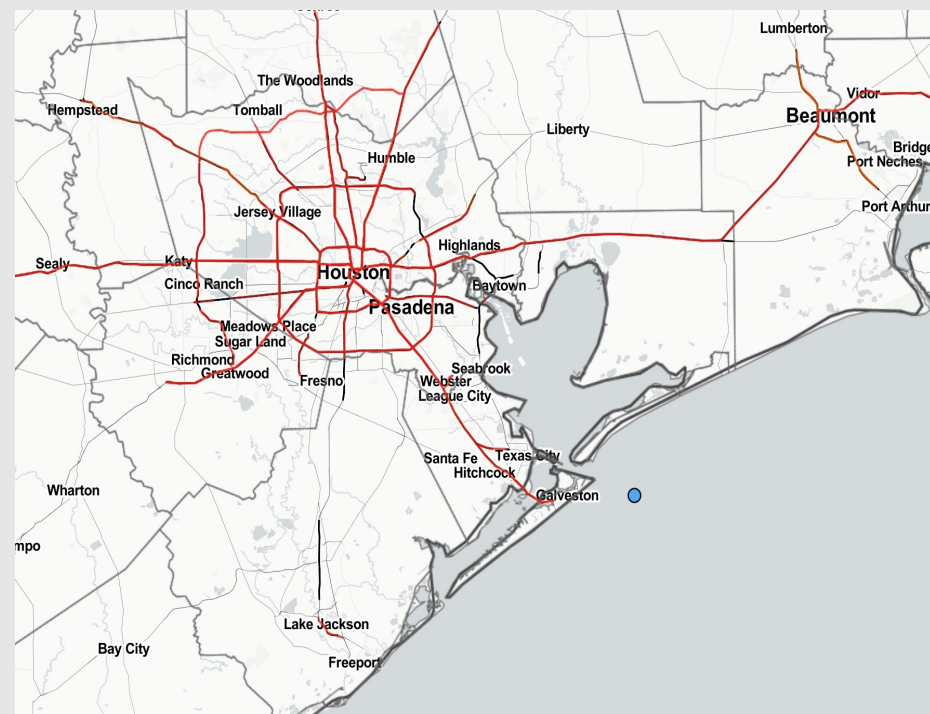
Updated: 1:00 PM CT

Saturday, March 11, 2023

Forecaster: Josh Collins

## Weather Headlines

- Favoring dry conditions over the next 3 days.
- **A low-end risk for sea fog returns late tonight into tomorrow morning. See Sunday slide for additional details.**
- Winds of 15 – 20 kts will continue to be possible, especially south of Morgan's Point, and last throughout the next few days.



**Radar/NWS Alerts: 12:30 PM CT**



As always, please do not hesitate to reach out to us with any forecast questions via the chat option on the Weather Porthole or our on-call number, **(317)-560-8122** press 1 for forecast questions.

# Houston Pilots Extended Range Visibility Report



## Tuesday 3/14/23

Winds out of the north make sea fog unlikely in the AM, but winds shifting back to the SE make it possible in the PM hours. However, low level moisture is absent at this time.

### Confidence



## Thursday 3/16/23

Winds out of the south throughout the day, however, low level moisture is absent.

### Confidence



## Wednesday 3/15/23

Winds out of the SSE throughout the day Wednesday, however, low level moisture is absent.

### Confidence



## Chance for Reduced Visibility

Tuesday AM	Unlikely
Tuesday PM	Unlikely
Wednesday AM	Unlikely
Wednesday PM	Unlikely
Thursday AM	Unlikely
Thursday PM	Unlikely

## The image contains two logos. On the left is the logo for BAM WX.COM, featuring the letters 'BAM' in a stylized font with a white 'A' and a black shadow, followed by 'WX.COM' in black and 'Weather. Made. Simple.' in blue and red below it. On the right is the logo for Houston Pilots, featuring a large red 'H' with a black outline and the text 'Houston Pilots' in white to its right.



Time	Sat 12pm	Sat 1pm	Sat 2pm	Sat 3pm	Sat 4pm	Sat 5pm	Sat 6pm	Sat 7pm	Sat 8pm	Sat 9pm	Sat 10pm	Sat 11pm	Sun 12am	Sun 1am	Sun 3am	Sun 4am	Sun 5am	Sun 6am	Sun 7am	Sun 8am	Sun 9am	Sun 10am	Sun 11am	Sun 12pm	Sun 1pm	Sun 2pm	Sun 3pm	Sun 4pm	Sun 5pm	Sun 6pm	Sun 7pm	Sun 8pm	Sun 9pm	Sun 10pm	Sun 11pm	Mon 12am
610 Bridge	10	10	10	10	10	10	10	10	10	10	10	10	10	10	10	10	10	10	10	7	7	8	10	10	10	10	10	10	10	10	10	10	10	10	10	10
Kinder 1	10	10	10	10	10	10	10	10	10	10	10	10	10	10	10	10	10	10	10	8	8	9	10	10	10	10	10	10	10	10	10	10	10	10	10	10
Greens Bayou	10	10	10	10	10	10	10	10	10	10	10	10	10	10	10	10	10	10	10	8	8	10	10	10	10	10	10	10	10	10	10	10	10	10	10	10
Shell Crude	10	10	10	10	10	10	10	10	10	10	10	10	10	10	10	10	10	10	10	8	8	10	10	10	10	10	10	10	10	10	10	10	10	10	10	10
Lynchburg Ferries	10	10	10	10	10	10	10	10	10	10	10	10	10	10	10	10	10	10	10	8	8	10	10	10	10	10	10	10	10	10	10	10	10	10	10	10
Exxon 3	10	10	10	10	10	10	10	10	10	10	10	10	10	10	10	10	10	10	10	8	8	10	10	10	10	10	10	10	10	10	10	10	10	10	10	10
Morgans Point	10	10	10	10	10	10	10	10	10	10	10	10	10	10	10	10	10	10	10	8	8	10	10	10	10	10	10	10	10	10	10	10	10	10	10	10
75/76	10	10	10	10	10	10	10	10	10	10	10	10	10	10	10	10	10	10	10	8	8	10	10	10	10	10	10	10	10	10	10	10	10	10	10	10
63/64	10	10	10	10	10	10	10	10	10	10	10	10	10	10	10	10	10	10	10	8	8	10	10	10	10	10	10	10	10	10	10	10	10	10	10	10
51/52	10	10	10	10	10	10	10	10	10	10	10	10	10	10	10	10	10	10	10	8	8	10	10	10	10	10	10	10	10	10	10	10	10	10	10	10
37/38	10	10	10	10	10	10	10	10	10	10	9	10	9	9	10	10	10	10	10	8	8	9	10	10	10	10	10	10	10	10	10	10	10	10	10	10
25/26	10	10	10	10	10	10	9	10	10	10	9	9	9	9	9	9	9	10	9	8	8	8	10	10	10	10	10	10	10	10	10	10	10	10	10	10
11/12	8	9	10	10	10	8	8	8	8	8	7	7	7	7	8	7	8	8	10	8	8	8	10	10	10	10	10	10	10	10	10	10	10	10	10	10
1 & 2 Bravo	8	8	9	10	8	8	7	8	8	7	6	6	6	6	7	7	8	8	9	8	8	8	8	8	9	9	9	10	10	10	10	10	10	10	10	10

# Houston Pilots Wind Report



Example

Sustained wind 13 Knots

Gusts 18 Knots

Wind from the N

WS: 13  
G:18  
N

Time Knots	Sat 12pm	Sat 1pm	Sat 2pm	Sat 3pm	Sat 4pm	Sat 5pm	Sat 6pm	Sat 7pm	Sat 8pm	Sat 9pm	Sat 10pm	Sat 11pm	Sun 12am	Sun 1am	Sun 3am	Sun 4am	Sun 5am	Sun 6am	Sun 7am	Sun 8am	Sun 9am	Sun 10am	Sun 11am	Sun 12pm	Sun 1pm	Sun 2pm	Sun 3pm	Sun 4pm	Sun 5pm	Sun 6pm	Sun 7pm	Sun 8pm	Sun 9pm	Sun 10pm	Sun 11pm	Mon 12am	
610 Bridge	14	14	15	14	15	15	14	16	17	19	19	20	20	19	19	18	18	17	16	15	14	13	11	10	9	10	10	10	11	13	12	11	11	13	14	14	
	21	22	21	22	22	22	22	25	26	28	29	30	30	29	29	28	27	26	24	23	21	19	17	15	12	14	14	14	16	17	18	16	17	20	20	21	
	SSW	SSW	SSW	SSW	SSW	SSW	S	S	S	S	SSW	SSW	SSW	SSW	SSW	SSW	SSW	SW	SW	SW	SW	WSW	W	WNW	WNW	NW	NNW	NNW	NNW	N	N	NNE	N	NNE	NNE		
Kinder 1	14	14	15	14	15	15	14	16	17	18	19	20	20	19	19	18	18	17	15	15	14	13	11	10	9	10	10	10	11	13	12	11	12	14	14	14	
	20	21	21	22	22	21	22	25	26	28	29	30	30	29	28	28	27	26	23	23	21	19	17	15	12	13	13	14	16	17	18	17	21	21	21		
	SSW	SSW	SSW	SSW	SSW	SSW	S	S	S	S	SSW	SSW	SSW	SSW	SSW	SSW	SSW	SW	SW	SW	SW	WSW	W	WNW	WNW	NW	NNW	NNW	NNW	N	N	ENE	N	NNE	NNE		
Greens Bayou	14	14	15	15	15	15	14	16	17	18	19	19	19	19	18	18	18	17	15	14	13	13	11	10	9	10	10	10	12	13	12	11	12	14	14	14	
	20	21	21	21	22	21	21	24	25	27	28	29	29	28	28	27	27	25	23	22	20	19	17	15	12	13	13	14	16	17	18	17	18	21	21	21	
	SSW	SSW	SSW	SSW	SSW	SSW	S	S	S	S	SSW	SSW	SSW	SSW	SSW	SSW	SSW	SW	SW	SW	SW	WSW	W	WNW	WNW	NW	NNW	NNW	NNW	N	N	SE	N	NNE	NNE		
Shell Crude	14	14	15	15	15	15	14	16	17	18	18	19	19	18	18	18	17	16	15	14	13	13	11	10	9	10	10	10	12	13	12	12	12	14	14	14	
	20	20	20	21	21	21	21	24	25	27	27	28	28	28	27	27	26	25	23	21	20	19	17	15	12	13	13	14	16	17	18	17	18	20	21	21	
	SSW	SSW	SSW	SSW	SSW	S	S	S	S	S	SSW	SSW	SSW	SSW	SSW	SSW	SSW	SW	SW	SW	SW	WSW	W	W	WNW	NW	NNW	NNW	NNW	N	N	W	N	NNE	NNE		
Lynchburg Ferries	14	15	16	15	16	15	15	16	17	17	18	18	18	18	17	17	17	16	15	13	13	12	11	10	9	10	11	11	12	13	13	12	13	14	14	14	
	20	20	20	21	21	21	21	23	25	26	26	28	28	27	26	26	25	24	22	20	19	19	16	15	12	13	13	14	16	17	18	17	18	20	21	21	
	SSW	SSW	SSW	SSW	SSW	S	S	S	S	S	SSW	SSW	SSW	SSW	SSW	SSW	SSW	SW	SW	SW	SW	WSW	W	W	WNW	NW	NNW	NNW	NNW	N	N	N	NW	N	NNE	NNE	
Exxon 3	14	14	16	15	16	16	16	16	16	17	17	18	17	17	17	16	16	16	14	13	13	12	11	10	9	9	10	10	12	13	13	13	13	13	14	14	
	19	19	20	20	21	21	21	23	24	25	24	27	25	26	25	25	24	23	21	19	19	19	16	15	12	13	13	14	16	17	18	17	18	19	19	20	
	SSW	SSW	SSW	SSW	SSW	S	S	S	S	S	S	SSW	SSW	SSW	SSW	SSW	SSW	SW	SW	SW	SW	WSW	W	W	WNW	NW	NNW	NNW	NNW	N	N	N	N	NNE	NNE		
Morgans Point	15	15	16	16	17	17	17	17	17	16	16	18	16	17	17	16	16	16	15	13	13	13	11	10	9	9	10	11	12	13	14	14	14	14	14	15	
	18	19	20	21	21	21	21	22	24	23	23	26	24	25	25	24	24	23	21	20	19	19	16	15	13	13	14	14	17	17	18	17	18	19	20	20	
	S	S	S	S	S	S	S	S	S	S	SSW	SSW	SSW	SSW	SSW	SSW	SSW	SW	SW	SW	SW	WSW	W	W	WNW	NW	NNW	NNW	NNW	N	N	N	N	NNE	NNE		
75/76	15	16	17	18	19	19	19	18	18	16	17	18	17	17	18	17	17	17	15	15	14	14	12	10	9	9	10	10	12	13	15	15	16	17	17	18	19
	18	19	20	21	22	21	22	22	23	22	22	25	24	24	25	24	24	23	22	20	19	19	16	15	13	14	15	15	17	17	18	18	19	20	22		
	S	S	S	S	S	S	S	S	S	S	SSW	SSW	SSW	SSW	SSW	SSW	SSW	SW	SW	SW	SW	WSW	WSW	W	W	WNW	NW	NNW	NNW	N	N	N	N	NNE	NNE		
63/64	16	17	18	18	19	19	19	19	18	17	18	19	18	18	18	18	18	17	16	15	15	14	12	11	9	9	10	10	11	13	15	16	16	18	19	20	
	19	20	21	21	21	22	21	22	22	22	22	25	24	25	25	24	24	23	22	20	19	19	17	15	13	14	14	15	16	17	18	18	20	21	22	24	
	S	S	S	S	S	S	S	S	S	S	SSW	SSW	SSW	SSW	SSW	SSW	SSW	SW	SW	SW	SW	WSW	WSW	W	WNW	NW	NW	NNW	NNW	N	N	N	NE	N	NNE	NNE	
51/52	16	17	18	18	18	19	18	18	18	17	17	19	18	18	19	18	18	17	16	15	15	14	12	11	9	10	10	10	11	12	14	15	16	17	19	19	22
	19	20	21	22	21	21	21	22	22	23	22	25	24	25	25	25	25	23	22	21	20	19	17	15	13	13	13	14	15	17	18	18	19	21	21	24	
	S	S	S	S	S	S	S	S	S	SSW	SSW	SSW	SSW	SSW	SSW	SSW	SSW	SW	SW	SW	SW	WSW	WSW	W	WNW	WNW	NW	NNW	NNW	N	N	N	ESE	N	NNE	NNE	
37/38	15	16	17	17	17	17	17	18	18	17	18	20	19	19	19	19	19	18	17	16	15	15	13	12	10	10	10	10	11	13	15	15	17	19	19	21	
	19	20	21	21	21	21	20	22	22	24	23	25	25	26	26	26	26	24	23	22	21	20	17	15	13	13	13	15	16	17	18	19	21	21	23		
	S	S	S	S	S	S	S	S	S	S	SSW	SSW	SSW	SSW	SSW	SSW	SSW	SW	SW	SW	SW	WSW	W	W	WNW	WNW	NW	NNW	NNW	N	N	SSW	N	NNE	NNE		
25/26	14	15	15	16	16	16	15	17	17	17	17	19	18	18	19	19	19	18	17	16	16	15	13	12	11	11	10	10	11	12	13	14	15	17	18	19	
	18	20	20	21	21	20	19	22	22	24	24	25	25	26	27	27	27	26	24	23	22	20	18	16	13	13	12	12	13	15	17	19	18	20	20	22	
	SSW	SSW	SSW	S	S	S	S	S	S	S	SSW	SSW	SSW	SSW	SSW	SSW	SSW	SW	SW	SW	SW	WSW	WSW	W	W	WNW	NW	NNW	NNW	N	N	SW	N	NNE	NNE		
11/12	13	14	14	15	15	15	14	17	17	17	17	18	18	18	19	19	19	18	17	17	16	15	14	13	12	11	11	10	11	11	13	13	14	16	17	18	
	18	19	19	20	20	20	19	22	23	25	24	25	25	25	27	27	27	26	25	24	23	21	19	16	14	13	12	12	13	14	16	18	18	20	20	21	
	SSW	S	SSW	S	S	S	S	S	S	S	S	SSW	SSW	SSW	SSW	SSW	SSW	SW	SW	SW	SW	SW	SW	SW	SW	SW	SW	SW	W	NW	NNW	NNW	N	S	N	NNE	NNE
1 & 2 Bravo	13	14	14	14	15	16	16	19	20	20	20	21	21	21	21	21	21	20	20	19	18	18	17	16	14	14	13	12	12	13	14	15	15	19	20	22	
	17	18	18	18	19	20	19	22	24	26	25	25	26	27	29	28	29	28	27	26	25	24	21	20	17	15	14	13	14	15	16	18	19	21	22	23	
	SSW	S	S	S	S	S	S	S	S	S	S	SSW	SSW	SSW	SSW	SSW	SSW	SSW	SW	SW	SW	SW	SW	SW	SW	SW	WSW	WSW	W	NW	NNW	NNW	SE	N	NNE	NNE	

# Houston Pilots: sat. 3/11/2023

## Forecast Discussion

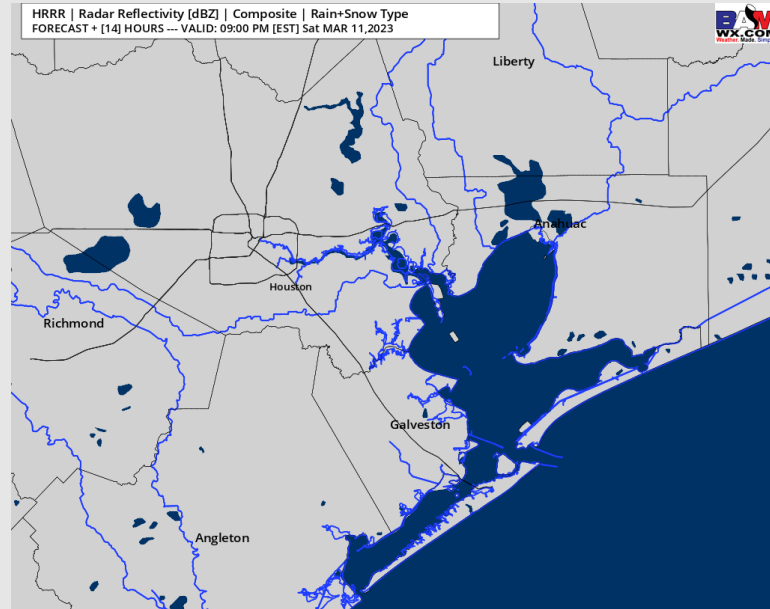
**Precip:** Anticipating dry conditions for the rest of the day today.

**Wind:** Winds out of the SW for the rest of the day today. Sustained winds at 11-16 kts for the rest of the day. After 7 PM, winds near the boarding station will increase to 14 – 19 kts.

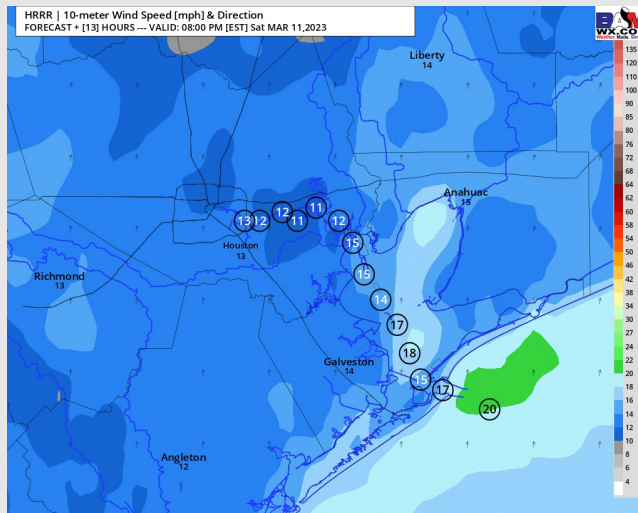
**Temps:** Low temperatures Sunday AM will be in the upper 60s F to low 70s F across all stations.

**Visibility:** Not anticipating any visibility concerns at this time.

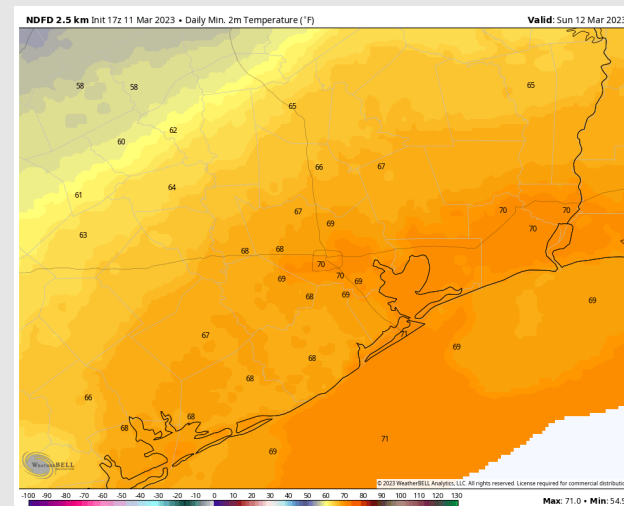
## Precip Forecast: 8 PM CT



Wind Speed  
7 PM CT



Low Temps  
Sunday





# Houston Pilots: Sun. 3/12/2023

## Forecast Discussion

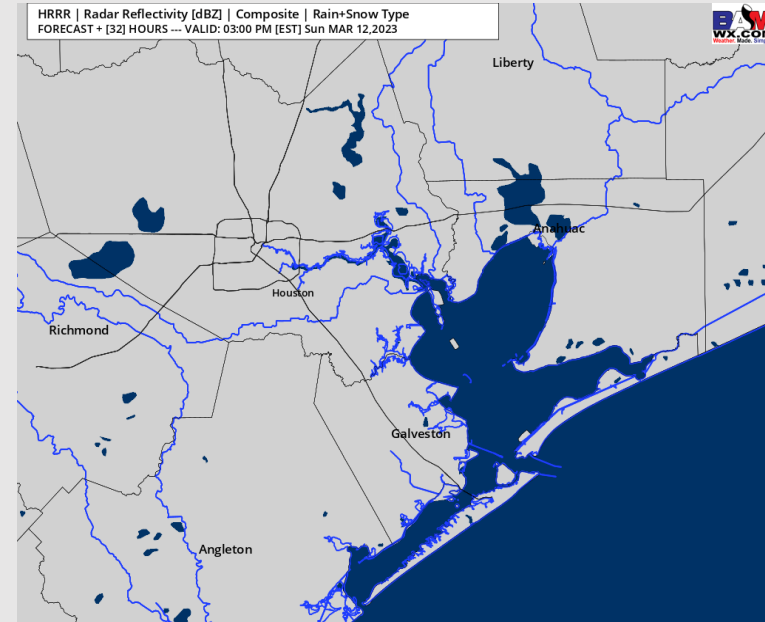
**Precip:** Favoring dry conditions throughout the day on Sunday.

**Wind:** Winds will start out of the SSW during the early morning hours of Sunday. Gradually shifting to out of the WSW by 9 AM local time. Then by 4 PM, the winds will shift to out of the NNW as a cold front moves through the area. Winds N of Morgan's Point will be 9-15 kts, while winds S of Morgan's Point will be 13-19 kts until 12 PM. After 12 PM, winds decrease to 2-10 kts across all stations until 6 PM. After 6 PM, winds pick back up to 10-20 kts for the rest of the day.

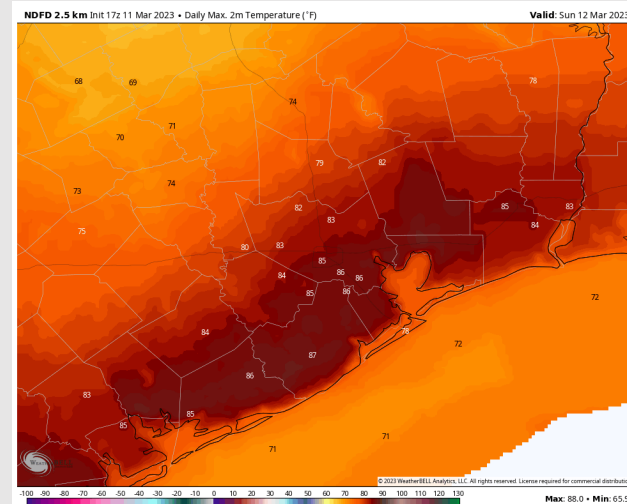
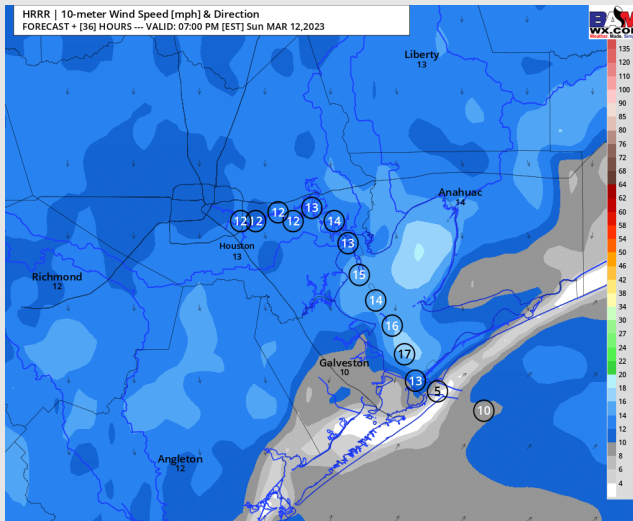
**Temps:** High temperatures Sunday will be in the low-mid 70s F near the boarding station and low 80s F at all other stations S of Morgan's Point. N of Morgan's Point temperatures will be in the mid 80s.

**Visibility:** A low-end patchy fog risk will return late Saturday night into Sunday morning. Starting around 8 PM tonight and ending around 7 AM tomorrow morning with visibilities not dropping below 2-4 miles.

## Precip Forecast: 2 PM CT



Wind Speed  
6 PM CT



High Temps  
Sunday

# Houston Pilots: Mon. 3/13/2023

## Forecast Discussion

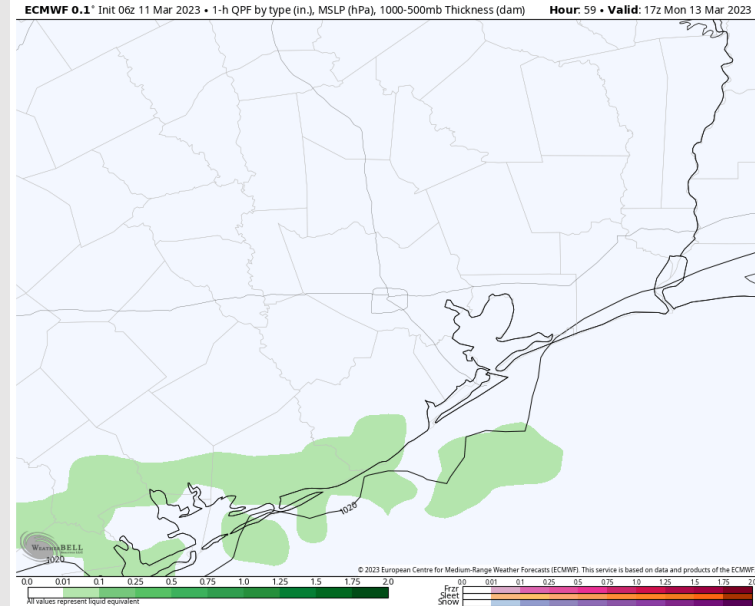
**Precip:** Favoring dry conditions until 11 AM on Monday, after 11 AM favoring a 10-20% for an isolated shower Monday near the boarding station until 2 PM. After 2 PM favoring dry conditions for the rest of the day.

**Wind:** Sustained winds out of the NE throughout the day. Winds N of Morgan's Point 7 – 12 kts and S of Morgan's Point 14 – 20 kts until 3 PM where winds S of Morgan's Point decreases to 10 – 16 kts for the rest of the evening.

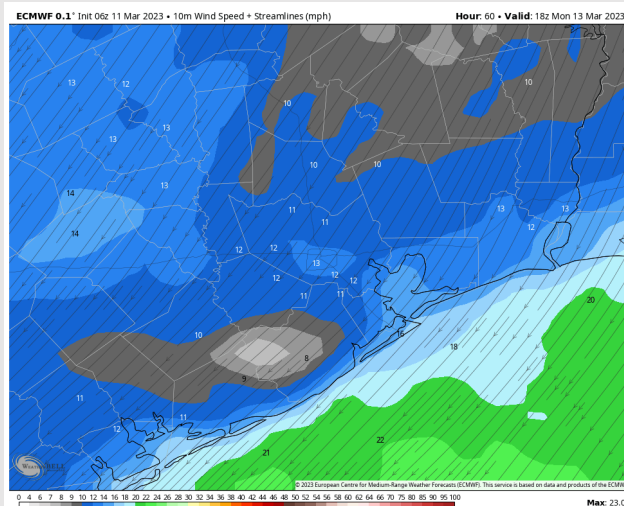
**Temps:** High temperatures Monday will be in the upper to mid 60s F for all stations.

**Visibility:** Not anticipating visibility issues on Monday.

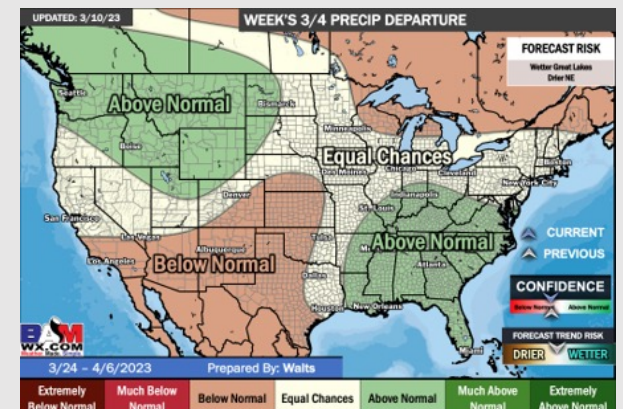
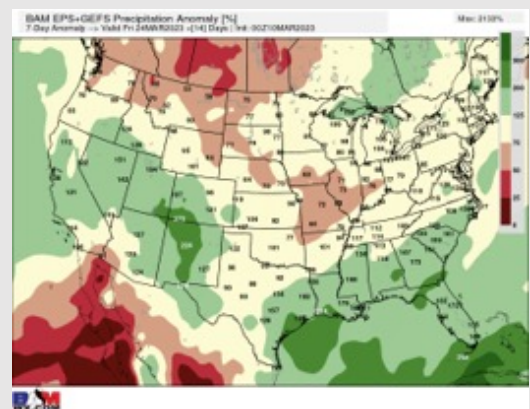
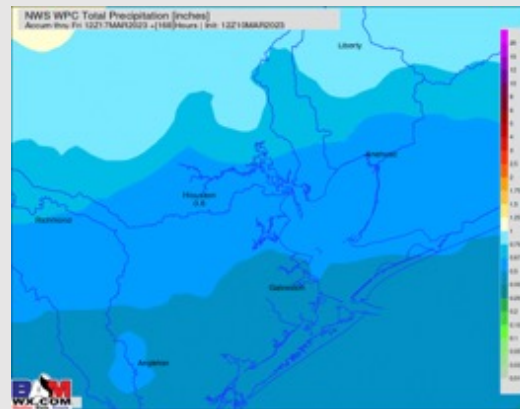
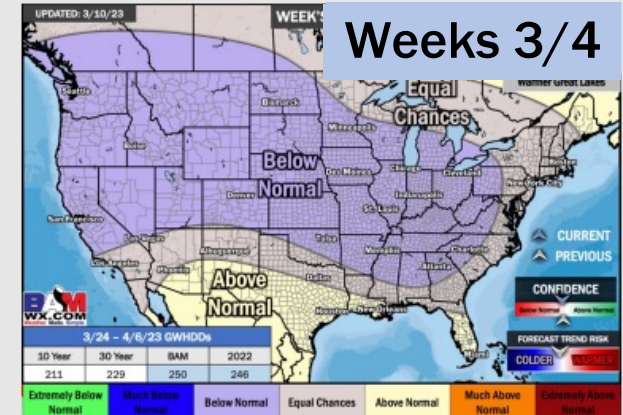
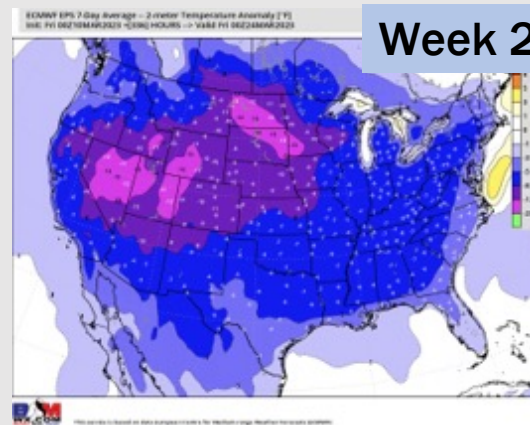
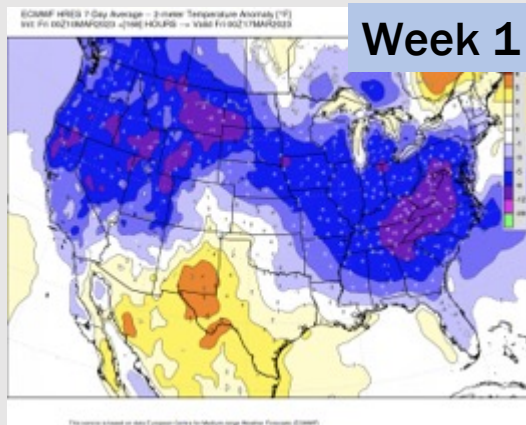
## Precip Forecast: 12 PM CT



Wind Speed  
1 PM CT



# Houston Pilots: 3/11/23



- Anticipating low end shower chances today and early next week. Better shot for moisture will come over next weekend. Temperatures are expected to be above normal over the next seven days.
- Expecting above normal precipitation chances and below normal temperatures extending into the week 2 timeframe.
- Anticipating above normal temperatures and equal chances for precipitation favored in the week 3/4 timeframe.