

# Houston Pilots Forecast Package



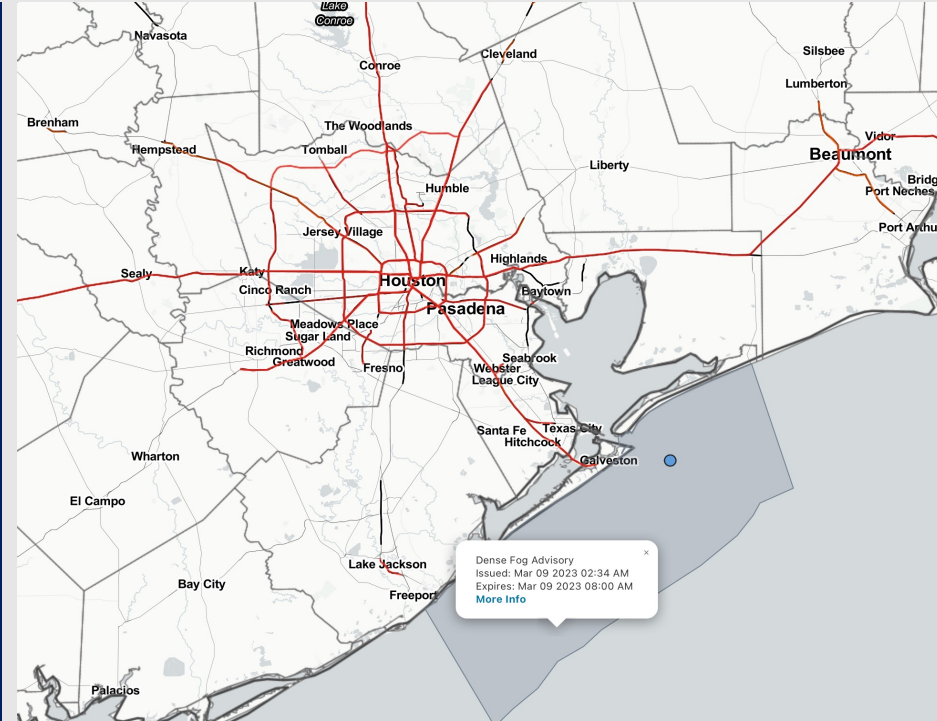
Updated: 5:00 AM CT

Thursday, March 9, 2023

Forecaster: Alyssa McClung

## Weather Headlines

- Favoring mostly dry conditions over the next few days with low-end spotty shower chances across the area Friday.
- **Sea fog will begin to dissipate after 7:30AM-CT. Additional details on timing and coverage in Visibility Report below!**
- Winds will stay rather light over the next two days with ranges staying within 5 – 15 kts, with increased winds starting Saturday.
- No wave height concerns over the next ~5 days.



**Radar/NWS Alerts: 5:00 AM CT**



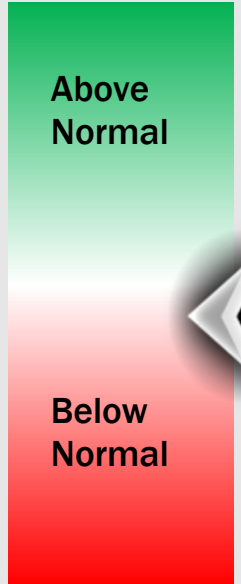
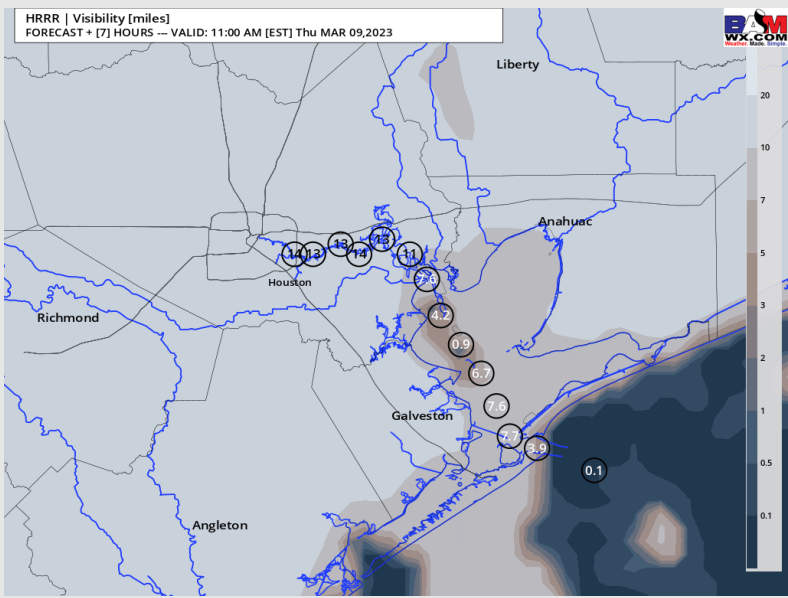
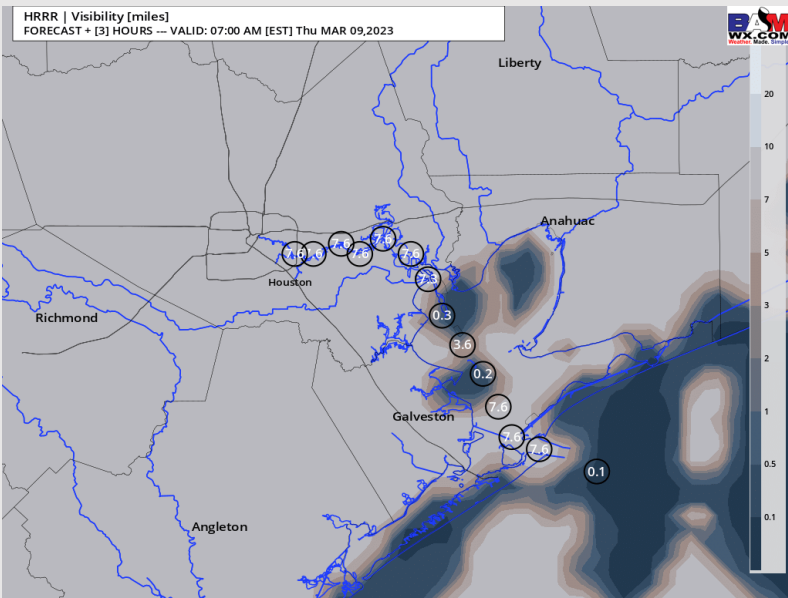
As always, please do not hesitate to reach out to us with any forecast questions via the chat option on the Weather Porthole or our on-call number, **(317)-560-8122** press 1 for forecast questions.

# Houston Pilots Visibility Report



## 6 AM CT THU VISIBILITY      10 AM CT THU VISIBILITY

## Confidence



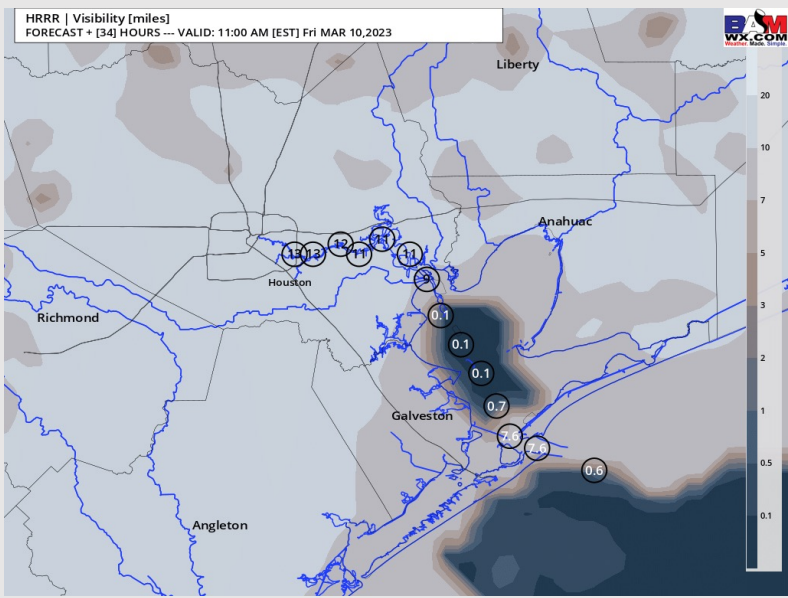
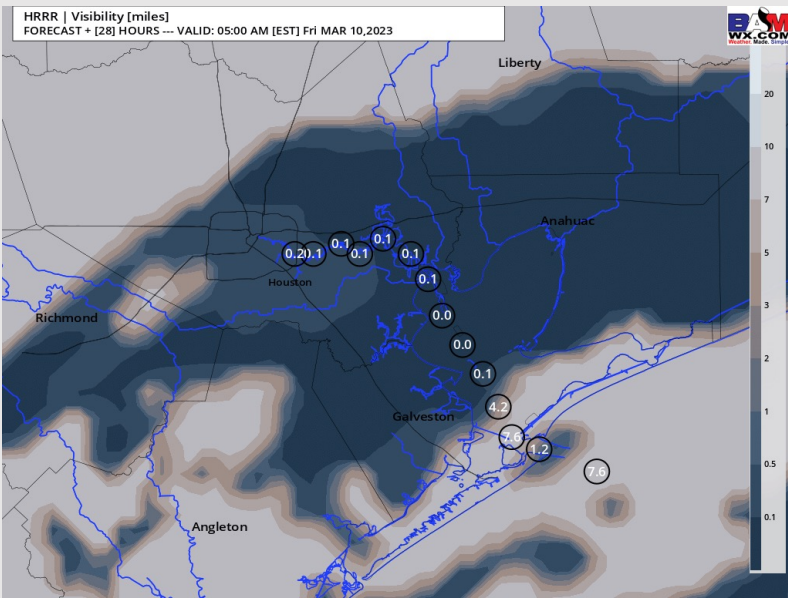
TIMEFRAME DISCUSSED	THREAT
CURRENT - 10 AM THU	Medium

- Patchy fog ongoing this morning resulting in visibilities reduced at times to 2 – 4 miles for all stations.
- All stations south of Morgan's Point will be at risk for periods of visibilities reduced to <1 mile, with the Boarding Station to Station 25/26 having the greatest risk.
- Favoring fog to become more sporadic and start to lift for the majority of stations around the 8 AM timeframe. A few lingering pockets of fog will continue to be possible through ~10AM-CT.
- Can't rule out the possibility for patchy fog with visibilities less than 2 miles to linger at the Boarding Station throughout the afternoon.

# Houston Pilots Visibility Report



## 4 AM CT FRI VISIBILITY      10 AM CT FRI VISIBILITY      Confidence



**Above Normal**

**Below Normal**

TIMEFRAME DISCUSSED	THREAT
10 AM THU - 12 PM FRI	Medium

- Favoring mostly cleared conditions through the late morning and afternoon today, however a few lingering pockets of fog near the Boarding Station cannot be ruled out.
- Lower confidence, however some model data is picking up on a brief period of sporadic fog conditions between the 5 - 7 PM timeframe as winds become temporarily gusty from the SSE which may allow for fog within the Gulf to be pushed towards the Bay.
- Favoring patchy dense fog to redevelop around the 11 PM timeframe with visibilities of 2 - 4 miles. **Anticipating fog to be the most widespread and dense between 3 AM and 8 AM tomorrow where visibilities of less than 2 miles will be possible for all stations. Stagnant winds will encourage this fog to develop over stations N of Morgan's Point.**
- Favoring fog threat to lift around the 12 PM timeframe Friday.

# Houston Pilots Extended Range Visibility Report



## Sunday 3/12/23

SW/SSW winds throughout Sunday AM before shifting NW Sunday PM. Low level saturation is expected to continue to struggle to occur at this time.



## Monday 3/13/23

Dry low levels make sea fog development unlikely.



## Tuesday 3/14/23

Winds out of the north make sea fog unlikely in the AM, but winds shifting back to the SE make it possible in the PM hours.



## Chance for Reduced Visibility

Sunday AM	Possible
Sunday PM	Unlikely
Monday AM	Unlikely
Monday PM	Unlikely
Tuesday AM	Unlikely
Tuesday PM	Possible

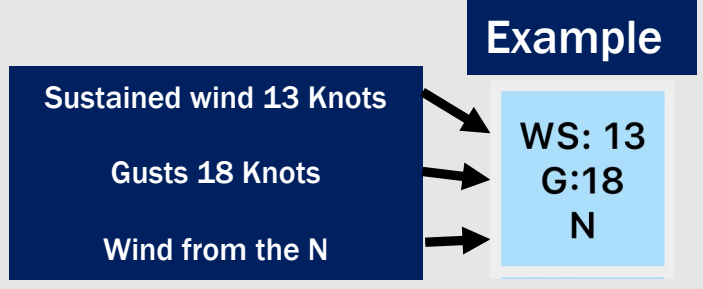
# Houston Pilots Visibility Report



Refer to the text slides above for the official BAM forecast. The chart may not be seeing the fog threat well.

Time	Thu 4am	Thu 5am	Thu 6am	Thu 7am	Thu 8am	Thu 9am	Thu 10am	Thu 11am	Thu 12pm	Thu 1pm	Thu 2pm	Thu 3pm	Thu 4pm	Thu 5pm	Thu 6pm	Thu 7pm	Thu 8pm	Thu 9pm	Thu 10pm	Thu 11pm	Fri 12am	Fri 1am	Fri 2am	Fri 3am	Fri 4am	Fri 5am	Fri 6am	Fri 7am	Fri 8am	Fri 9am	Fri 10am	Fri 11am	Fri 12pm	Fri 1pm	Fri 2pm	Fri 3pm
610 Bridge	5	4	2	2	3	6	8	10	10	10	10	10	10	10	10	10	10	8	6	6	4	2	1	0.48	0.48	0.41	0.24	0.24	3	6	9	10	10	10	10	
Kinder 1	5	4	2	2	3	6	8	10	10	10	10	10	10	10	10	10	10	8	6	6	4	2	1	0.48	0.48	1	2	2	5	7	9	10	10	10	10	
Greens Bayou	4	4	2	2	3	6	8	10	10	10	10	10	10	10	10	10	10	8	6	6	4	3	2	0.48	0.48	3	4	4	6	9	10	10	10	10	10	
Shell Crude	3	3	2	2	3	6	8	10	10	10	10	10	10	10	10	10	10	8	6	5	4	3	1	0.48	0.48	3	8	8	8	10	10	10	10	10	10	
Lynchburg Ferries	3	2	2	2	3	6	9	10	10	10	10	10	10	10	10	10	10	8	6	5	4	3	1	0.48	0.48	3	8	8	8	10	10	10	10	10	10	
Exxon 3	3	2	2	2	3	6	8	10	10	10	10	10	10	10	10	10	10	7	6	5	4	3	0.76	0.48	0.34	3	8	8	8	10	10	10	10	10	10	
Morgans Point	3	2	2	2	3	6	8	10	10	10	10	10	10	10	10	10	10	7	6	5	4	3	0.68	0.4	0.34	3	8	8	8	10	10	10	10	10	10	
75/76	3	2	2	2	3	6	8	10	10	10	10	10	10	10	10	10	10	7	6	4	4	2	0.52	0.24	0.32	3	8	8	8	10	10	10	10	10	10	
63/64	2	2	2	2	3	6	8	10	10	10	10	10	10	10	10	10	10	6	5	4	3	2	0.52	0.27	0.27	3	8	8	8	10	10	10	10	10	10	
51/52	1	2	2	2	3	6	8	10	10	10	10	10	10	10	10	10	8	6	6	4	3	1	0.52	1	1	3	7	8	8	9	10	10	10	10	10	
37/38	0.77	0.72	2	2	3	6	8	10	10	10	10	10	10	10	10	10	7	7	7	4	2	2	2	3	3	1	6	7	7	8	10	10	10	10	10	
25/26	0.77	0.53	0.75	0.48	3	5	8	10	10	10	10	10	10	10	10	8	8	8	8	6	6	6	5	6	5	0.71	5	5	6	6	8	10	10	10	10	
11/12	0.77	0.53	0.53	0.25	3	5	8	10	10	10	10	10	10	10	10	8	8	8	8	7	7	7	6	7	7	1	3	4	5	5	6	10	10	10	10	
1 & 2 Bravo	1	0.53	0.29	0.24	2	5	7	10	9	8	8	5	3	3	3	2	8	8	8	8	7	7	7	7	8	8	5	1	6	6	4	3	6	10	10	9

# Houston Pilots Wind Report



Time Knots	Thu 4am	Thu 5am	Thu 6am	Thu 7am	Thu 8am	Thu 9am	Thu 10am	Thu 11am	Thu 12pm	Thu 1pm	Thu 2pm	Thu 3pm	Thu 4pm	Thu 5pm	Thu 6pm	Thu 7pm	Thu 8pm	Thu 9pm	Thu 10pm	Thu 11pm	Fri 12am	Fri 1am	Fri 2am	Fri 3am	Fri 4am	Fri 5am	Fri 6am	Fri 7am	Fri 8am	Fri 9am	Fri 10am	Fri 11am	Fri 12pm	Fri 1pm	Fri 2pm	Fri 3pm				
610 Bridge	2	2	4	3	4	5	6	5	6	7	7	8	9	10	9	9	7	7	7	6	6	5	5	4	4	3	3	3	3	4	4	4	4	5	5	5	5			
	8	7	10	10	10	10	10	9	10	10	9	11	13	14	14	12	11	10	10	9	9	8	7	7	6	5	5	4	4	6	5	4	5	5	6	6	6			
	S	SE	SSE	S	S	S	S	S	S	S	SSE	SSE	SSE	SSE	SSE	S	S	S	S	S	S	S	S	SSW	WSW	W	WSW	NW	NNW	NNW	NNW	NNW	N	SW	E	N				
Kinder 1	2	2	4	3	4	5	6	5	6	7	7	9	10	10	8	9	7	7	6	6	5	5	4	3	3	3	3	3	4	4	4	4	4	5	5	5	5			
	8	7	10	10	10	10	10	9	10	10	10	11	13	14	14	12	11	10	10	9	9	8	7	7	6	5	5	4	4	6	5	5	5	5	6	6	6			
	SSE	SE	S	S	S	S	S	S	SSE	SSE	SSE	SSE	SSE	SSE	SSE	SSE	S	S	S	S	S	S	S	SSW	W	WNW	W	NW	NNW	NNW	NNW	NNW	NNW	SSW	NNE	N				
Greens Bayou	2	2	4	4	4	5	5	6	8	8	8	10	10	10	9	9	7	7	6	6	6	5	4	4	3	3	3	3	4	4	4	4	4	5	5	5	5			
	7	6	10	9	10	9	9	10	11	11	13	14	14	15	13	11	10	10	9	9	8	7	7	6	5	5	4	5	6	5	5	5	5	6	6	6	6			
	SSE	SE	S	S	SSW	S	S	SSE	SSE	SE	SE	SE	SSE	SSE	SSE	SSE	S	S	S	S	S	S	SSW	W	WNW	W	NW	NNW	NNW	NNW	NNW	NNW	SE	NNE	N	N				
Shell Crude	2	2	4	4	3	4	5	6	7	8	9	10	10	10	9	9	7	7	6	6	6	6	5	5	4	3	3	3	4	3	4	3	4	5	5	5	5			
	5	5	9	9	10	8	9	9	10	11	11	13	14	15	15	13	11	10	10	9	9	8	7	7	6	5	4	5	6	5	5	6	6	6	6	6	6			
	SE	ESE	S	S	SSW	S	S	SSE	SSE	SE	SE	SE	SE	SSE	SSE	SSE	S	S	S	S	S	S	SSW	W	WNW	W	NW	NNW	NNW	NNW	NNW	SW	N	NNE	NNE					
Lynchburg Ferries	2	2	4	3	3	4	5	6	8	9	9	11	11	11	10	9	8	7	7	6	6	6	5	4	4	4	3	3	4	4	4	5	5	5	5	5	5			
	4	4	8	10	10	8	9	9	10	11	12	14	15	16	16	13	11	10	10	9	9	7	7	6	6	5	4	4	4	4	4	4	5	5	5	5	5			
	ESE	ESE	SSE	S	SSW	S	S	SSE	SSE	SSE	SE	SE	SE	SSE	SSE	SSE	SSE	SSE	SSE	SSE	SSE	S	S	S	SSW	W	WNW	WNW	NW	NNW	NNW	NNW	NNW	NW	WSW	NE	NNE			
Exxon 3	2	2	3	3	3	3	5	7	9	9	10	11	11	11	10	10	8	7	7	6	6	6	5	4	4	4	4	3	4	4	4	4	5	5	5	5	5			
	3	3	6	9	9	9	9	11	11	12	15	16	16	16	13	11	10	10	9	8	8	7	6	6	6	6	5	4	5	6	6	6	6	6	6	7	6	6		
	E	ESE	SSE	S	S	S	SSE	SSE	SE	SSE	SSE	SSE	SSE	SSE	SSE	SSE	SSE	SSE	SSE	SSE	S	S	S	SSW	WSW	WNW	WNW	NW	NNW	NNW	NNW	WNW	W	WSW	SE	E				
Morgans Point	3	3	3	2	3	3	5	7	9	9	10	12	12	12	11	11	9	8	7	6	6	6	5	4	4	4	3	4	4	4	4	4	4	5	5	5	5	5		
	4	3	5	7	9	9	10	11	11	14	16	17	17	16	13	12	10	9	8	8	8	7	6	5	4	4	4	4	5	6	6	6	6	6	6	7	7	7		
	ENE	E	SE	SSE	SSE	SSE	SE	SE	SE	SE	SE	SE	SE	SSE	SSE	SSE	SSE	SSE	SSE	SSE	S	S	S	SSW	WSW	WNW	W	NW	NNW	NNW	S	SSE	SE	ESE	E	E				
75/76	4	3	4	3	4	3	6	7	8	9	11	13	13	13	12	12	10	9	8	7	6	6	5	4	4	4	4	4	4	4	4	4	4	5	6	7	7	7		
	4	4	4	5	8	8	9	9	11	13	15	17	18	17	16	13	12	10	9	8	7	7	6	5	5	5	5	4	5	5	6	6	7	7	7	8	8	8		
	ENE	E	ESE	SSE	SSE	SE	SE	SE	SE	SE	SE	SE	SE	SSE	SSE	SSE	SSE	SSE	SSE	S	S	S	S	S	WSW	WNW	WNW	NNW	NNW	N	WNW	ENE	ESE	ESE	ESE	ESE				
63/64	4	4	4	4	4	4	6	7	8	9	11	12	12	12	11	12	10	9	8	7	6	6	5	4	4	3	4	4	4	4	4	4	4	5	5	5	5	5		
	4	4	4	4	7	8	9	11	12	15	16	16	15	15	13	11	10	9	8	7	6	6	5	4	4	3	4	4	4	4	4	4	4	4	5	5	5	5		
	NE	E	ESE	SE	SSE	SE	SE	SE	SE	SE	SE	SE	SE	SSE	SSE	SSE	SSE	SSE	SSE	SSE	S	S	S	S	WSW	WNW	NW	NW	NNW	N	S	NE	E	ESE	ESE	ESE				
51/52	4	4	4	4	4	5	6	6	8	8	9	11	11	11	10	10	9	8	7	7	6	5	5	4	4	3	3	4	4	4	4	4	4	4	5	5	5	5		
	5	4	4	6	6	7	8	8	10	11	13	13	13	13	14	11	10	9	8	8	7	6	6	6	6	5	4	4	4	4	4	4	5	5	5	6	6	7	8	
	NE	E	ESE	SSE	SSE	SSE	SE	SE	SE	SE	SE	SE	SE	SSE	SSE	SSE	SSE	SSE	SSE	SSE	S	S	S	S	SSW	W	NW	WSW	NNW	N	SSW	E	ENE	ESE	SE	SE				
37/38	4	4	3	3	3	4	5	5	7	8	10	9	10	9	9	8	7	6	6	5	5	4	3	3	3	3	4	4	4	4	4	4	4	4	4	5	5	5	5	
	5	4	5	7	5	7	7	9	10	12	11	12	12	13	10	9	8	8	7	6	6	6	6	6	5	4	4	4	4	4	4	4	4	5	5	5	6	6	7	8
	ENE	ENE	ESE	SSE	SE	SSE	SE	SE	SE	SE	SE	SE	SE	SE	SSE	SSE	SSE	SSE	SSE	SSE	SSE	S	S	S	SSW	WSW	NW	WSW	NNW	NNW	S	ESE	ENE	ESE	ESE	SE	SE			
25/26	3	3	3	2	3	3	4	4	6	8	9	8	9	8	8	7	7	7	6	6	5	4	4	4	3	3	4	4	4	4	4	4	4	4	5	5	5	6	6	6
	6	4	6	6	5	6	7	6	8	9	10	9	11	12	9	9	8	8	7	7	6	6	6	6	6	4	4	4	4	4	4	4	4	5	5	5	6	6	7	7
	NE	ENE	ESE	SSE	SSE	SSE	SE	SE	SE	SE	SE	SE	SE	SE	SSE	SSE	SSE	SSE	SSE	SSE	SSE	SSE	SSE	S	S	WSW	WNW	NW	NNW	NNW	SSE	E	NE	E	ESE	ESE	SE	SE		
11/12	3	3	3	2	3	3	4	4	6	7	8	8	9	9	8	8	7	7	6	6	5	5	4	3	3	4	4	4	4	4	4	4	4	4	5	5	5	6	6	7
	7	4	7	5	6	5	6	6	7	9	9	9	11	11	11	9	9	8	8	7	7	6	6	7	7	6	4	4	4	4	4	4	4	5	5	5	6	6	7	8
	E	ENE	ESE	SE	SE	SE	ESE	ESE	ESE	SE	SE	SE	SE	SE	SSE	SSE	SSE	SSE	SSE	SSE	SSE	SSE	SSE	S	S	SW	WNW	W	NNW	NNW	W	ESE	NE	E	SE	SE	SE			
1 & 2 Bravo	5	4	4	2	3	3	4	5	5	8	8	9	10	9	10	9	9	9	8	7	7	6	5	4	4	4	4	4	4	4	4	4	4	4	4	4	5	5	6	
	10	5	6	6	5	4	5	6	7	10	9	10	11	10	11	10	10	10	10	9	8	7	7	6	5	4	4	4	4	4	4	4	4	4	4	4	5	5	6	6
	ESE	ENE	E	SE	E	ESE	ESE	ESE	ESE	ESE	ESE	ESE	ESE	SE	SE	SSE	SSE	SSE	SSE	SSE	SSE	SSE	SSE	SSE	S	SSW	W	WSW	NW	NNW	NNW	NW	ESE	SE	SSE	SSE	SSE			

# Houston Pilots: Thu. 3/9/2023



## Forecast Discussion

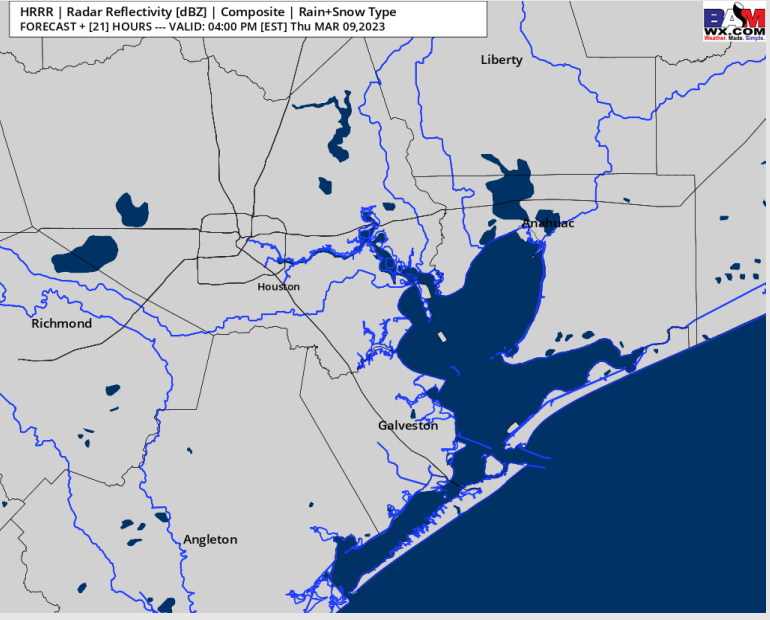
**Precip:** Anticipating dry conditions throughout the day today.

**Wind:** Winds will generally be out of the SE - SSE. Winds will primarily stay within 4 - 10 kts until 12 PM and 8 -13 kts between 12 - 8 PM. After 8 PM, winds will calm down to 5-9 kts. There will be a brief window of 20 kts gusts for stations north of Morgan's Point from 12 - 4 PM.

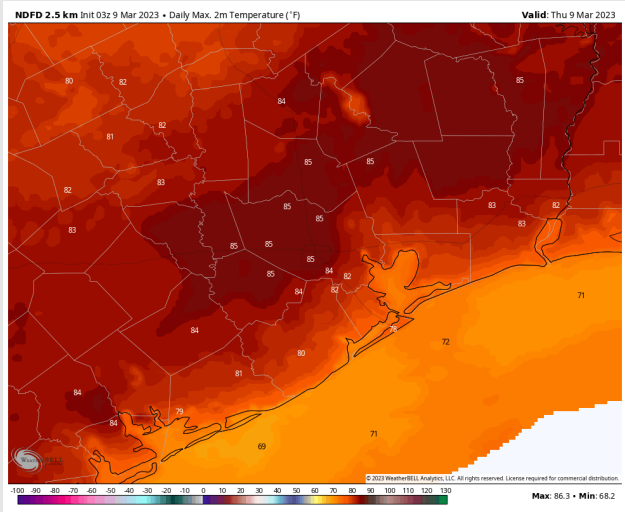
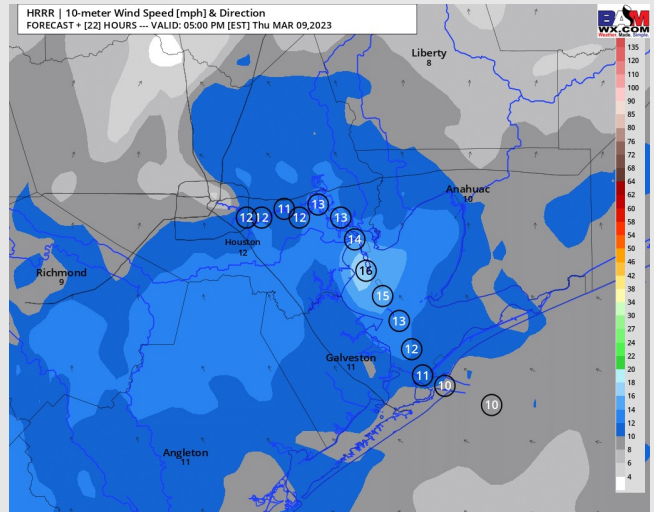
**Temps:** High temperatures today will be in the mid 80s F north of Morgan's Point and in the mid to lower 70s F south of Morgan's Point.

**Visibility:** Sea fog threat remains possible this morning with chances decreasing midday. Fog chances expected to redevelop late tonight. View visibility report for more details.

## Precip Forecast: 3 PM CT



Wind Speed  
4 PM CT



High Temps  
Today

# Houston Pilots: Fri. 3/10/2023



## Forecast Discussion

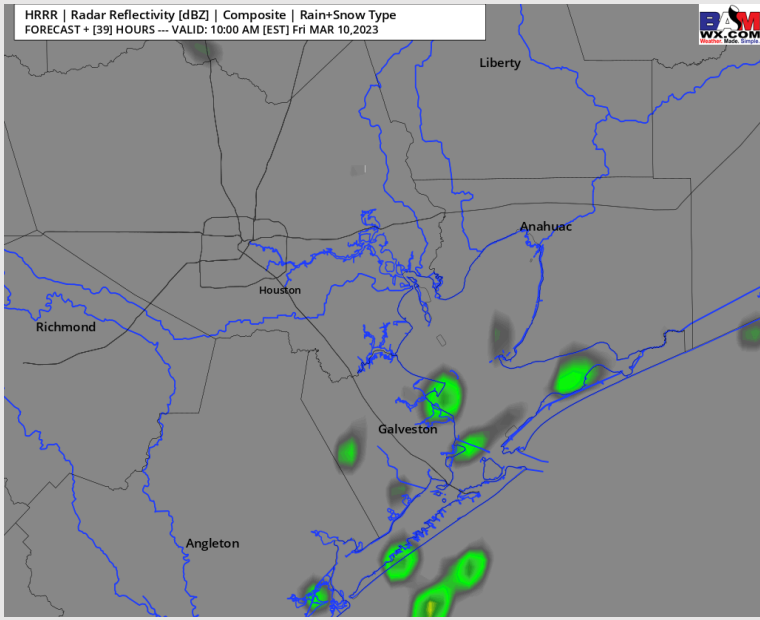
**Precip:** A weak front brings very low end shower chances (20%) north of Morgan's Point from 8 AM - 2 PM. Expect a mainly dry day Friday.

**Wind:** Winds will be from the S/SW at 6 - 12 kts until the weak front boundary moves in by 3 AM. Winds will then shift out of the NW briefly until 2 PM where winds will become more variable in nature at 2 - 7 kts. After 6 PM, winds will gradually shift back out of the S/SSE and remain that way through the rest of the evening, with winds south of Morgan's Point increasing back to 6 - 12 kts.

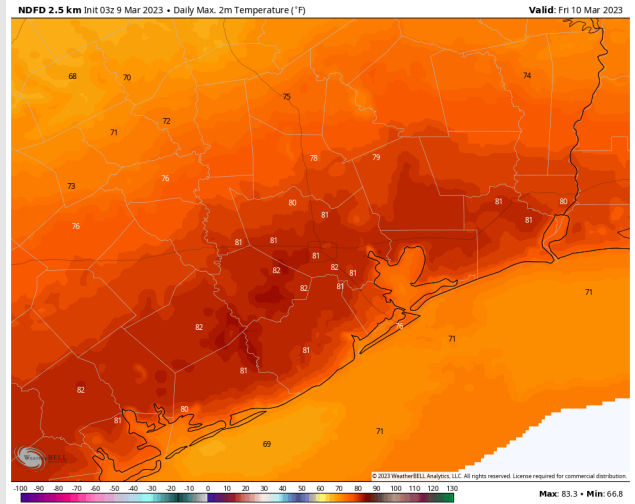
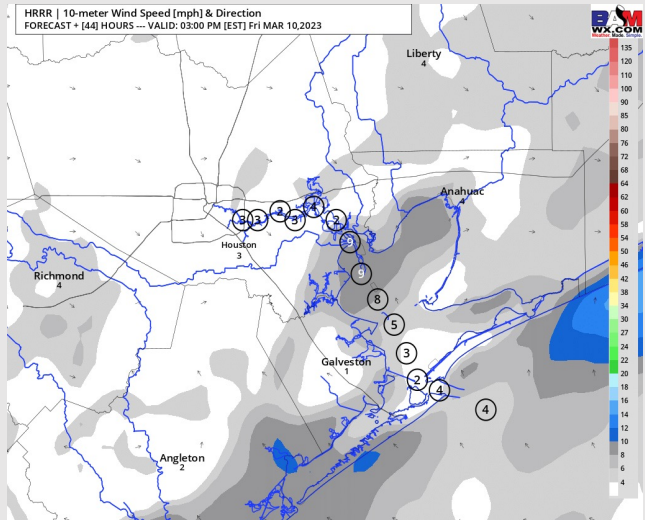
**Temps:** High temperatures Friday will be in the low 80s F north of Morgan's Point and in the mid to lower 70s F south of Morgan's Point.

**Visibility:** Sea fog threat remains possible for at least Friday AM.

## Precip Forecast: 2 PM CT



Wind Speed  
2 PM CT



High Temps  
Friday



# Houston Pilots: Sat. 3/11/2023



## Forecast Discussion

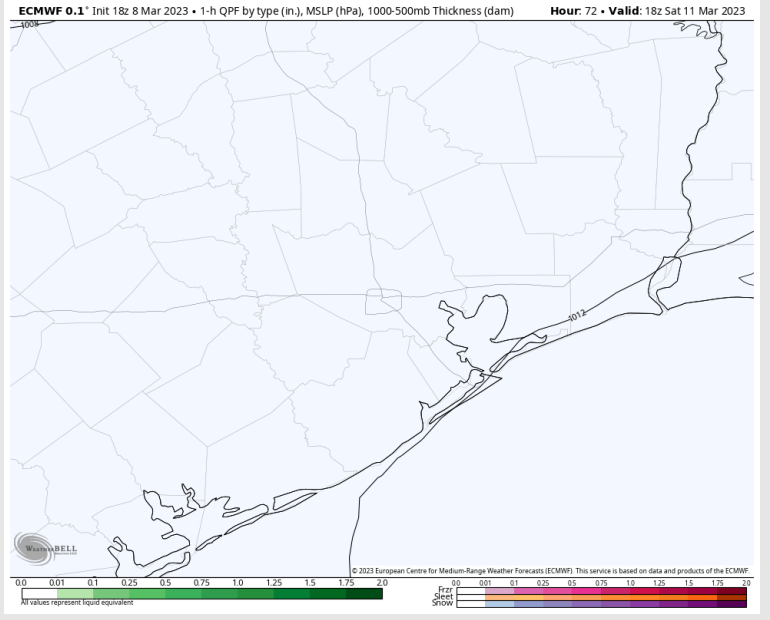
**Precip:** Favoring dry conditions throughout the day on Saturday.

**Wind:** Winds out of the SSE at 5 – 11 kts will shift to coming from the SW by 9 AM Saturday and remain there the rest of the day. After 9 AM, winds will increase to 11-16 kts for the rest of the day. After 9 PM, winds near the boarding station will increase to 14 – 19 kts.

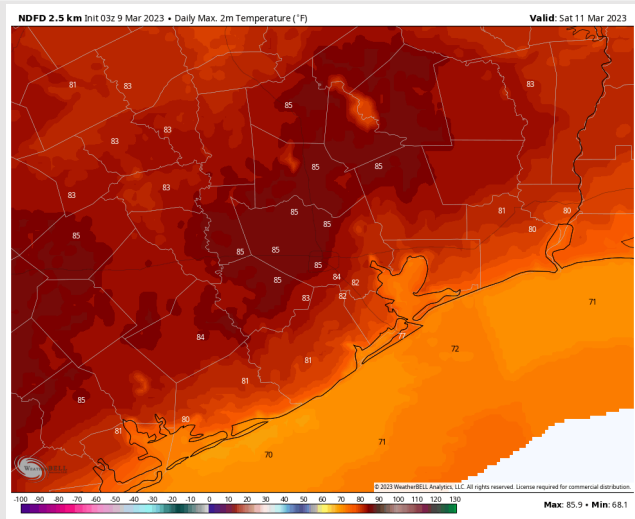
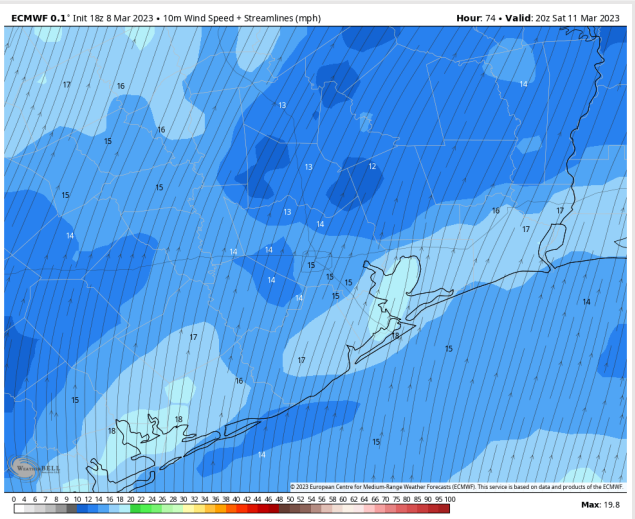
**Temps:** High temperatures on Saturday will be in the mid 80s north of Morgan’s Point and mid to low 70’s south of Morgan’s Point.

**Visibility:** Not anticipating visibility issues on Saturday.

## Precip Forecast: 12 PM CT

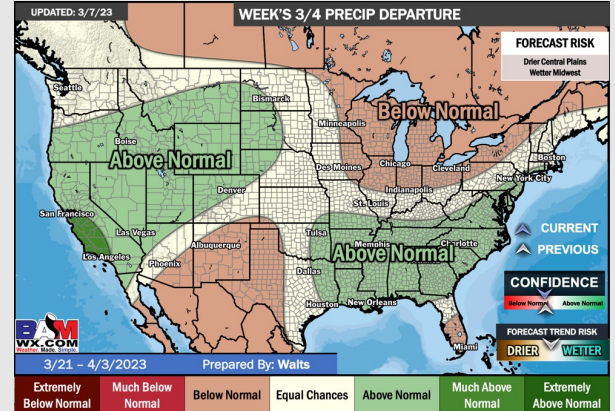
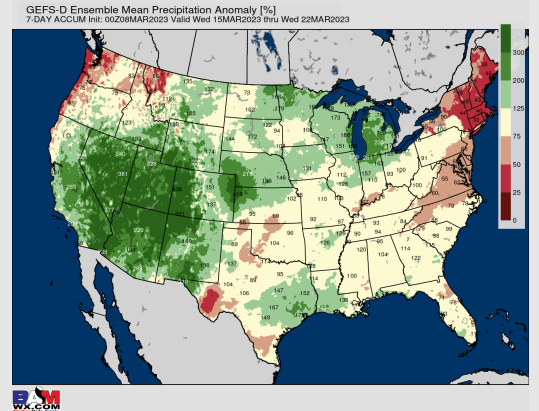
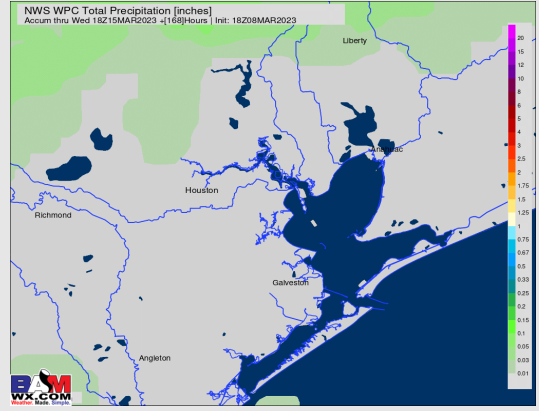
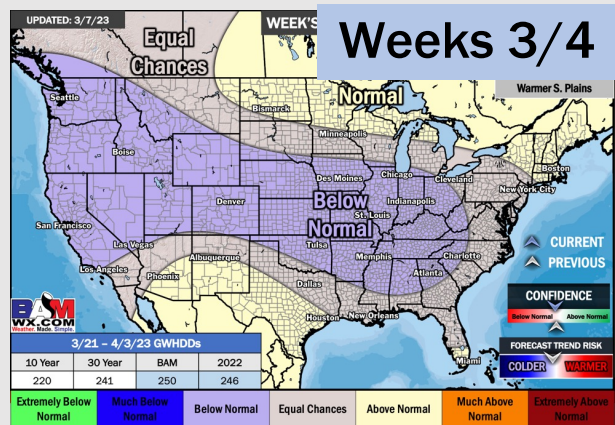
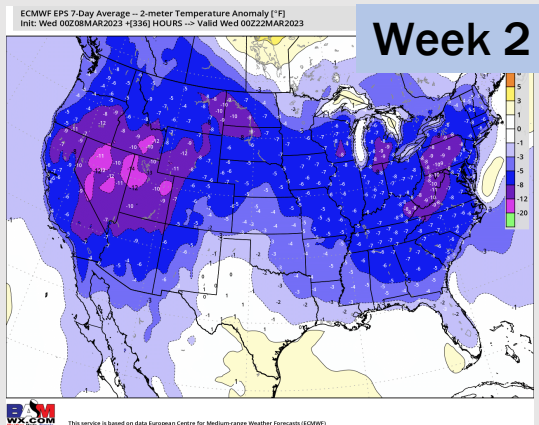
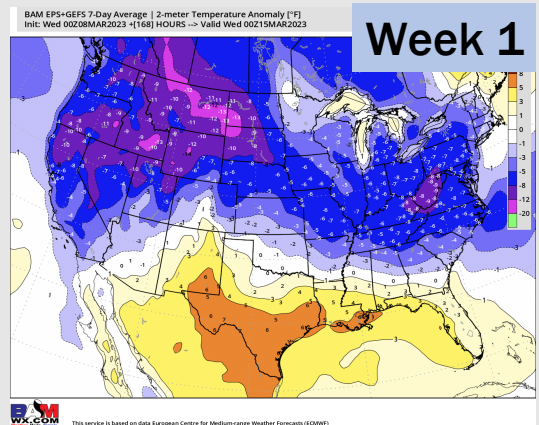


Wind Speed  
2 PM CT



High Temps  
Saturday

# Houston Pilots: 3/9/23



- Anticipating drier conditions through the the week. Better shot for moisture remains NW of stations. Temperatures are expected to be above normal over the next seven days.
- Expecting above normal precipitation chances and near normal temperatures extending into the week 2 timeframe.
- Anticipating near to above normal temperatures and above normal chances for precipitation favored in the week 3/4 timeframe.