

Houston Pilots Forecast Package



Updated: 5:00 AM CT

Sunday, February 5, 2023

Forecaster: Alyssa McClung

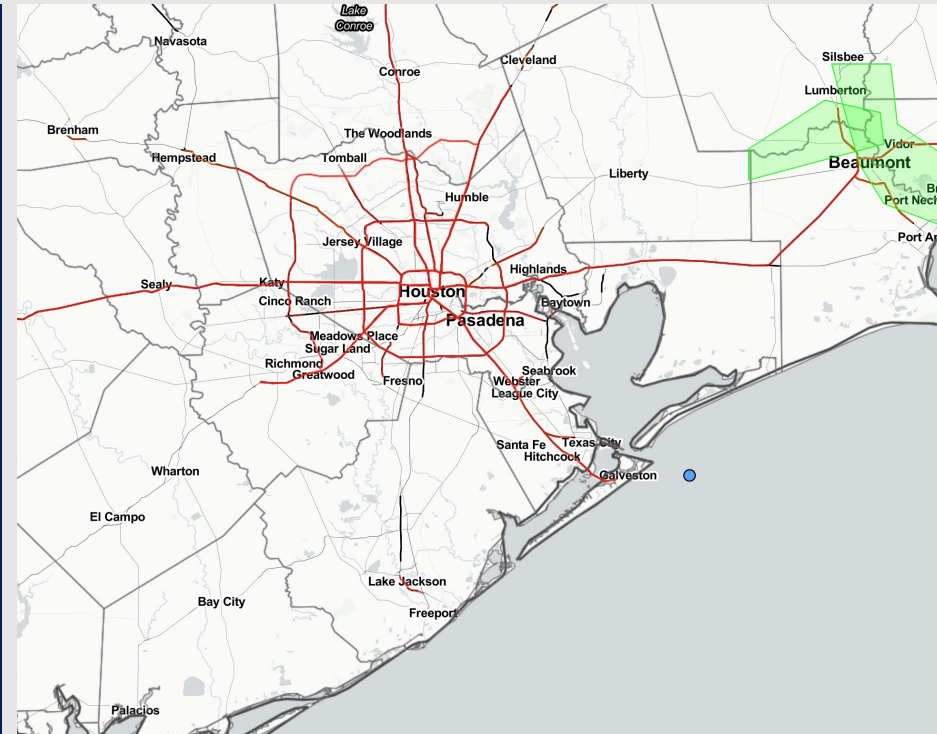
Weather Headlines

➤ Low end risk for fog this AM. (Check visibility slide)

The next potential sea fog threat will come Monday late evening at the earliest, with better fog chances come Tuesday AM.

➤ Expecting a dry stretch over the next couple days. Rain chances will work into the area Tuesday afternoon.

➤ Today will hold winds in the 5 – 10 kt range with Monday and Tuesday bringing more elevated winds in the 10 - 15 kt range. Monday and Tuesday PM could also bring a few gusts of 20-25 kts at times.



Radar/NWS Alerts: 5:00 AM CT

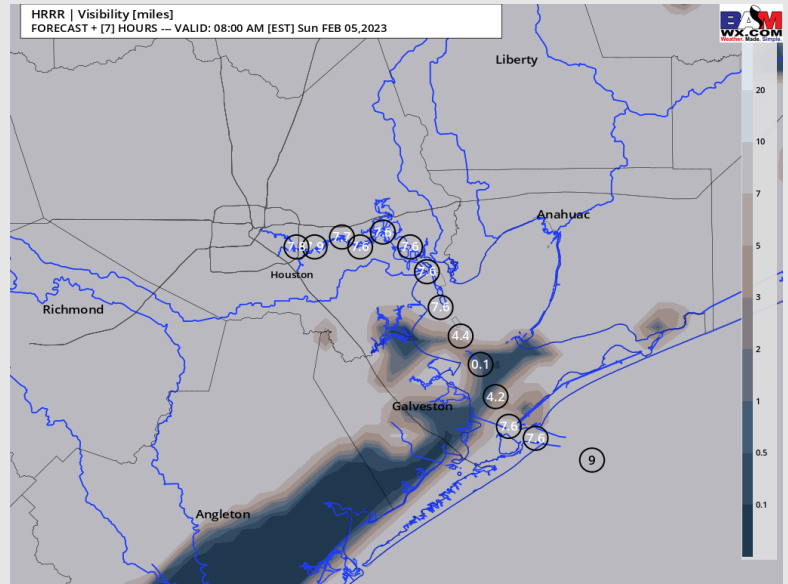
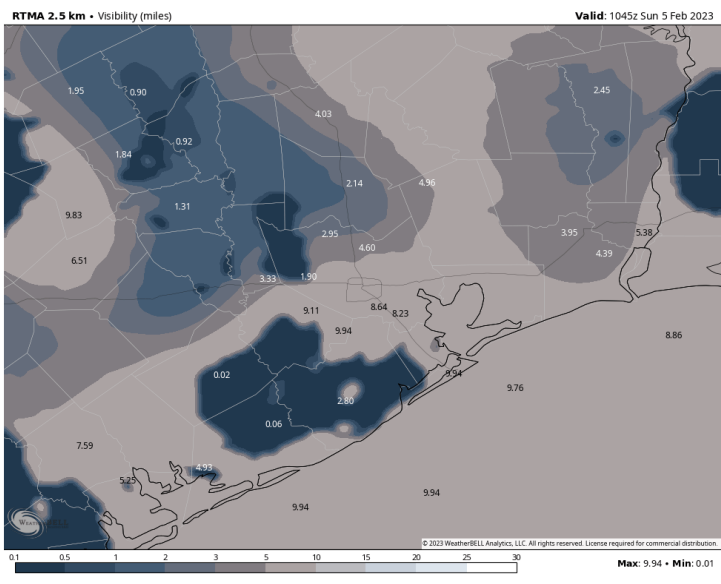


As always, please do not hesitate to reach out to us with any forecast questions via the chat option on the Weather Porthole or our on-call number, **(317)-560-8122** press 1 for forecast questions.

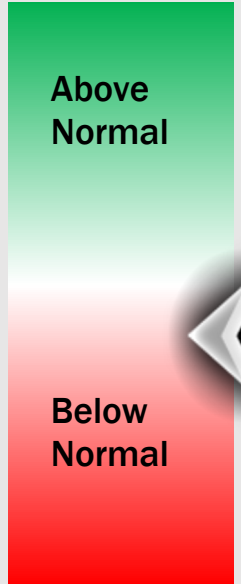
Houston Pilots Visibility Report



CURRENT VISIBILITY 5 AM CT 7 AM CT VISIBILITY SUN



Confidence



TIMEFRAME DISCUSSED	THREAT
CURRENT- SUN 12 PM	Low

- A low end risk for patchy fog this morning. Fog reported west of stations has potential to creep eastward as winds briefly veer out of the west , temporarily impacting stations.
- Favoring stations 51/52 through 610 Bridge to be at the greatest risk for seeing pockets of reduced visibility of less than 1 mile.
- Expecting fog risk to be greatest through 8 AM with potential lasting out through 12 PM today.

Houston Pilots Extended Range Visibility Report



Wednesday 2/8/23

Winds ahead of a front on Wednesday will be from the SE making sea fog a potential risk for the AM hours. By the afternoon winds will flip from the NW wiping out sea fog chances



Thursday 2/9/23

Light and variable winds in the AM hours will favor a southerly direction by the PM hours.



Friday 2/10/23

Sustained winds will be from the NW on Friday in the 10 – 15 kt range making fog threats highly unlikely



Chance for Reduced Visibility

Wednesday AM	Possible
Wednesday PM	Unlikely
Thursday AM	Unlikely
Thursday PM	Unlikely
Friday AM	Unlikely
Friday PM	Unlikely

Houston Pilots Visibility Report



Time	Sun 4am	Sun 5am	Sun 6am	Sun 7am	Sun 8am	Sun 9am	Sun 10am	Sun 11am	Sun 12pm	Sun 1pm	Sun 2pm	Sun 3pm	Sun 4pm	Sun 5pm	Sun 6pm	Sun 7pm	Sun 8pm	Sun 9pm	Sun 10pm	Sun 11pm	Mon 12am	Mon 1am	Mon 2am	Mon 3am	Mon 4am	Mon 5am	Mon 6am	Mon 7am	Mon 8am	Mon 9am	Mon 10am	Mon 11am	Mon 12pm	Mon 1pm	Mon 2pm	Mon 3pm				
610 Bridge	9	9	9	9	9	10	10	10	10	10	10	10	10	10	10	10	10	10	10	10	10	7	6	6	5	2	0.48	0.48	6	10	10	10	10	10	10	10	10	10		
Kinder 1	9	9	9	9	9	10	10	10	10	10	10	10	10	10	10	10	10	10	10	10	10	7	6	6	5	2	2	2	6	10	10	10	10	10	10	10	10			
Greens Bayou	10	9	9	9	9	10	10	10	10	10	10	10	10	10	10	10	10	10	10	10	10	7	7	6	4	4	4	4	7	10	10	10	10	10	10	10	10			
Shell Crude	10	9	9	9	9	10	10	10	10	10	10	10	10	10	10	10	10	10	10	10	10	8	8	8	8	8	8	8	8	8	10	10	10	10	10	10	10	10		
Lynchburg Ferries	10	9	9	9	9	10	10	10	10	10	10	10	10	10	10	10	10	10	10	10	10	8	8	8	8	8	8	8	8	8	10	10	10	10	10	10	10	10		
Exxon 3	9	9	9	9	9	10	10	10	10	10	10	10	10	10	10	10	10	10	10	10	10	9	8	8	8	8	8	8	8	8	10	10	10	10	10	10	10	10		
Morgans Point	9	8	8	9	8	10	10	10	10	10	10	10	10	10	10	10	10	10	10	10	10	9	8	8	8	8	8	8	8	8	10	10	10	10	10	10	10	10		
75/76	9	8	8	8	8	10	10	10	10	10	10	10	10	10	10	10	10	10	10	10	10	8	8	8	8	8	8	8	8	8	10	10	10	10	10	10	10	10		
63/64	8	8	8	9	9	10	10	10	10	10	10	10	10	10	10	10	10	10	10	10	10	8	8	8	8	8	8	8	8	8	10	10	10	10	10	10	10	10		
51/52	8	9	8	9	9	9	10	10	10	10	10	10	10	10	10	10	10	10	10	10	10	8	8	8	8	8	8	8	8	8	10	10	10	10	10	10	10	10		
37/38	10	9	9	9	10	10	10	10	10	10	10	10	10	10	10	10	10	10	10	10	10	8	8	8	8	8	8	8	8	8	10	10	10	10	10	10	10	10		
25/26	10	10	10	10	10	10	10	10	10	10	10	10	10	10	10	10	10	10	10	10	10	8	8	8	8	8	8	8	8	8	10	10	10	10	10	10	10	10		
11/12	10	10	10	10	10	10	10	10	10	10	10	10	10	10	10	10	10	10	10	10	10	8	8	8	8	8	8	8	8	8	8	10	10	10	10	10	10	10	10	
1 & 2 Bravo	10	10	10	10	10	10	10	10	10	10	10	10	10	10	9	10	9	9	9	9	9	9	8	8	8	8	8	8	8	8	8	8	8	8	8	8	9	9	9	9

Houston Pilots Wind Report



Example

Sustained wind 13 Knots
 Gusts 18 Knots
 Wind from the N

WS: 13
 G:18
 N

Time Knots	Sun 4am	Sun 5am	Sun 6am	Sun 7am	Sun 8am	Sun 9am	Sun 10am	Sun 11am	Sun 12pm	Sun 1pm	Sun 2pm	Sun 3pm	Sun 4pm	Sun 5pm	Sun 6pm	Sun 7pm	Sun 8pm	Sun 9pm	Sun 10pm	Sun 11pm	Mon 12am	Mon 1am	Mon 2am	Mon 3am	Mon 4am	Mon 5am	Mon 6am	Mon 7am	Mon 8am	Mon 9am	Mon 10am	Mon 11am	Mon 12pm	Mon 1pm	Mon 2pm	Mon 3pm			
610 Bridge	3	3	1	2	1	2	3	6	6	4	4	4	3	3	5	4	5	5	5	5	5	6	6	9	5	5	5	6	6	8	9	10	12	14	16	18	19	19	20
	4	5	4	6	6	4	10	10	9	6	6	6	5	4	5	7	7	8	8	8	8	8	8	8	8	8	8	8	9	10	12	14	16	18	19	19	20		
Kinder 1	3	3	1	2	1	2	3	6	6	4	4	3	3	4	3	5	5	5	5	5	5	5	5	6	5	5	5	6	6	8	9	10	12	13	13	13	13		
	4	5	4	6	6	4	9	10	9	6	5	5	5	5	5	7	7	8	7	8	8	8	8	8	8	8	8	8	9	10	12	14	15	17	18	19	19		
Greens Bayou	3	3	2	2	1	2	2	5	6	4	3	3	4	4	4	5	5	5	5	5	5	5	5	5	5	5	5	6	6	8	9	11	12	13	13	13	13		
	5	5	5	6	6	4	9	10	8	6	5	5	5	6	7	7	7	8	7	8	8	8	8	8	8	8	8	8	9	9	12	14	15	17	18	19	20		
Shell Crude	3	3	2	1	1	2	3	5	6	3	3	4	5	5	4	5	5	5	5	5	5	5	5	5	5	5	5	6	6	8	9	11	12	13	14	14	13		
	5	5	5	5	6	5	9	10	8	5	6	6	6	7	8	7	7	7	7	8	8	8	8	8	8	8	8	8	9	9	12	13	15	17	18	19	19		
Lynchburg Ferries	3	3	2	1	2	2	3	4	4	3	4	6	6	5	4	6	5	5	5	5	6	5	5	5	5	5	5	6	6	8	9	11	12	14	14	13	13		
	5	6	5	5	6	5	9	10	8	6	7	7	7	7	9	8	8	7	8	8	8	8	8	8	8	8	8	8	9	11	13	15	17	18	19	20			
Exxon 3	3	3	2	2	2	2	3	4	4	3	6	6	6	5	4	6	6	5	6	6	6	6	6	6	6	6	6	6	6	7	8	9	11	12	13	14	13	13	
	5	6	5	5	5	4	8	9	8	6	8	8	9	9	10	8	8	7	8	8	8	8	8	8	8	8	8	8	9	10	12	13	15	17	18	19	20		
Morgans Point	3	4	2	3	3	2	3	4	4	5	7	7	8	6	6	7	7	6	6	6	6	6	7	6	6	6	6	7	7	8	9	10	11	12	14	14	14		
	5	6	5	5	5	4	7	9	8	8	10	11	11	10	11	9	8	8	8	8	8	8	8	8	8	8	8	9	9	10	12	13	15	16	18	19	19		
75/76	4	4	3	3	4	3	3	4	6	9	10	10	9	9	8	9	8	7	7	7	8	8	8	8	8	8	8	9	9	10	10	11	12	13	14	15	15		
	4	5	4	3	4	4	6	9	9	11	13	13	12	12	10	10	9	8	8	8	8	8	8	8	8	8	8	9	10	11	12	13	15	16	17	18	18		
63/64	3	4	3	3	3	4	4	4	6	9	10	10	9	9	7	9	8	7	7	8	8	8	8	8	8	8	8	9	10	10	11	12	13	14	15	15	15		
	4	4	3	3	3	4	5	9	9	11	13	13	12	11	9	10	9	8	8	8	8	8	8	8	8	8	8	9	10	11	12	12	13	14	16	17	17		
51/52	3	4	2	4	3	4	4	4	5	8	10	10	9	9	8	8	8	7	7	7	8	8	8	8	8	8	8	9	9	10	10	11	12	13	14	14	14		
	4	4	2	4	3	4	5	9	8	9	11	12	11	11	10	8	8	8	8	8	8	8	8	8	8	8	8	9	10	11	11	13	14	15	16	17	17		
37/38	3	3	1	3	3	3	3	4	4	7	9	9	8	8	7	7	7	7	7	7	8	7	7	7	7	7	7	8	8	9	10	10	11	12	12	13	14	13	
	4	3	2	3	3	3	5	8	7	8	10	10	9	10	10	7	7	7	8	8	8	8	8	8	8	8	8	9	9	10	11	11	12	14	15	16	16		
25/26	3	1	1	1	3	2	3	4	5	6	7	7	7	7	6	6	6	6	6	6	7	7	7	7	7	7	7	7	7	8	8	9	10	11	11	12	13	12	
	3	1	2	2	3	3	4	7	6	7	8	9	8	9	10	7	7	7	7	7	8	8	8	8	8	8	8	9	9	10	11	11	12	13	14	15	15		
11/12	3	1	2	2	2	3	4	5	5	5	6	7	6	6	7	6	6	6	6	7	7	8	8	7	7	8	8	8	9	9	10	10	11	11	11	12	12		
	4	1	2	2	2	4	7	6	7	8	9	8	9	10	7	7	7	8	8	8	8	8	8	8	8	8	8	9	10	11	11	12	13	13	14	15	15		
1 & 2 Bravo	3	1	2	3	3	3	6	6	6	6	7	6	6	7	7	7	7	7	8	8	8	8	8	8	8	8	8	9	9	10	10	11	11	11	12	12	13		
	5	2	2	4	3	3	6	7	8	8	9	9	8	9	10	8	8	8	8	8	8	8	8	8	8	8	8	9	9	10	10	11	12	12	13	13	14		

Houston Pilots: Sun. 2/5/2023



Forecast Discussion

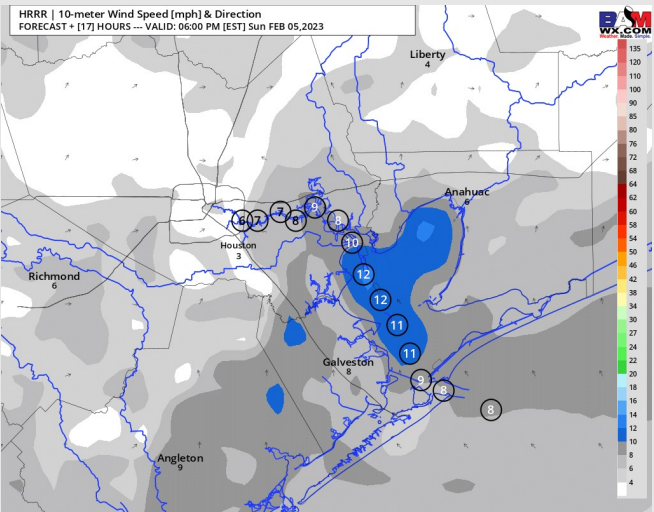
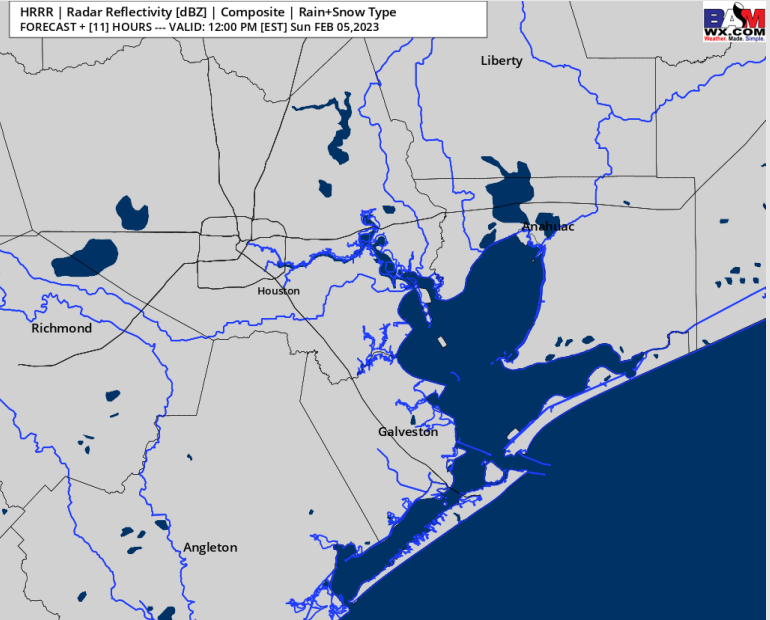
Precip: Anticipating dry conditions throughout the day Sunday.

Wind: Sustained winds out of the ESE until 10 AM CST. After 11 AM, winds shift to of of the SE for the rest of the day. Winds at 5 - 10 kts across all stations throughout the day Sunday. Gusts of 8 - 13 kts possible for all stations through the AM with gusts of 13 - 18 kts for stations 51?52 through Morgan's Point.

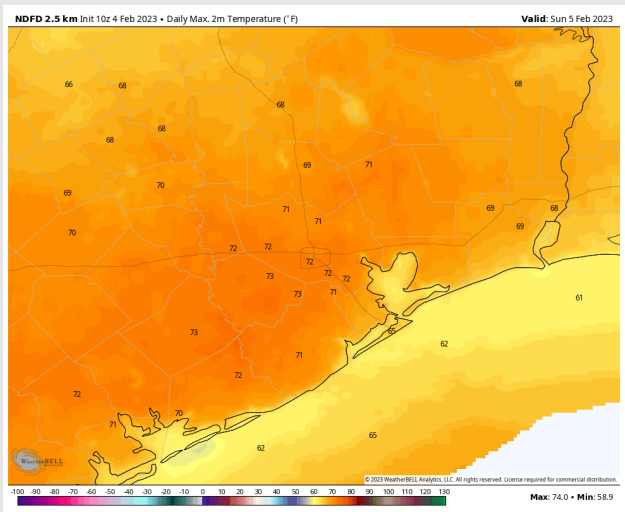
Temps: High temps Sunday in the low 60s F near the boarding station and low 70s F across all other stations.

Visibility: Low end risk for patchy fog this AM. (View Visibility slide)

Precip Forecast: 11 AM CT



Wind Speed
5 PM CT



High Temps
Sunday

Forecast Discussion

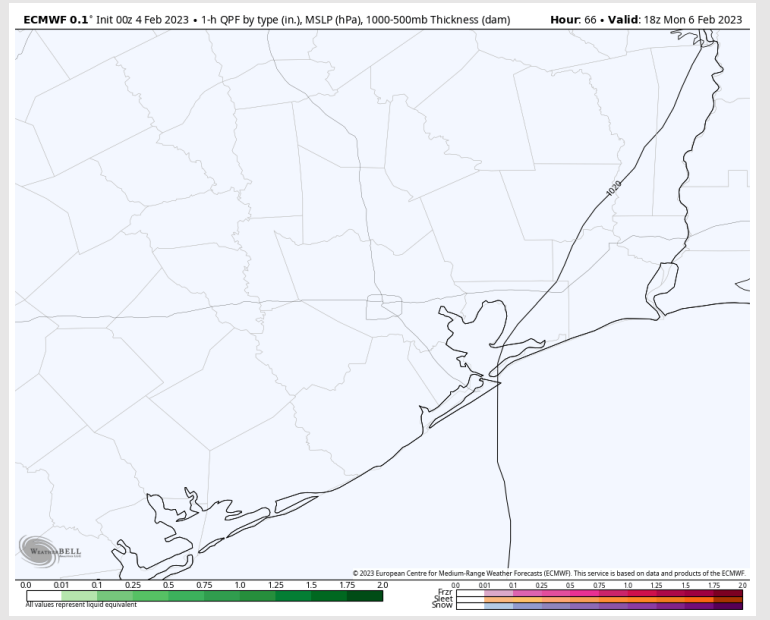
Precip: Anticipating dry conditions on Monday.

Wind: Sustained winds will be from the SSE on Monday. Winds will start out light for the early AM hours at 3 – 8 kts but will increase to 10 – 16 kts by 8 AM south of Morgan’s Point and 11 AM north of Morgan’s Point. Winds will remain as such for the rest of the day. **Wind gusts of 22 – 25 kts will be possible across all stations from 10 AM – 4 PM.**

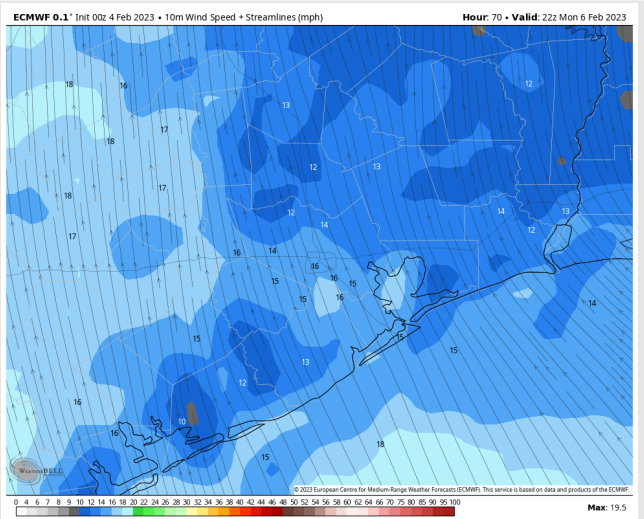
Temps: High temperatures Monday will be in the mid 70s F north of Morgan’s Point and in the mid to upper 60s F south of Morgan’s Point.

Visibility: Not favoring Fog concerns for the AM hours as winds will be too light for sea fog transport, but as we head into the mid-afternoon fog could become an issue with increasing southeasterly winds.

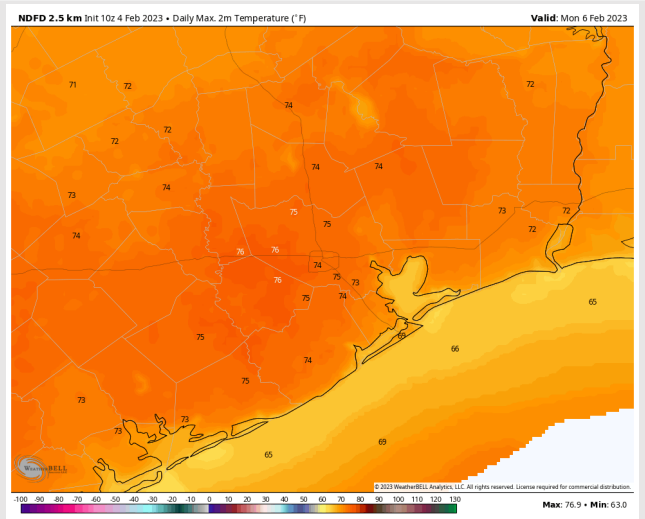
Precip Forecast: 12 PM CT



Wind Speed
4 PM CT



High Temps
Monday



Forecast Discussion

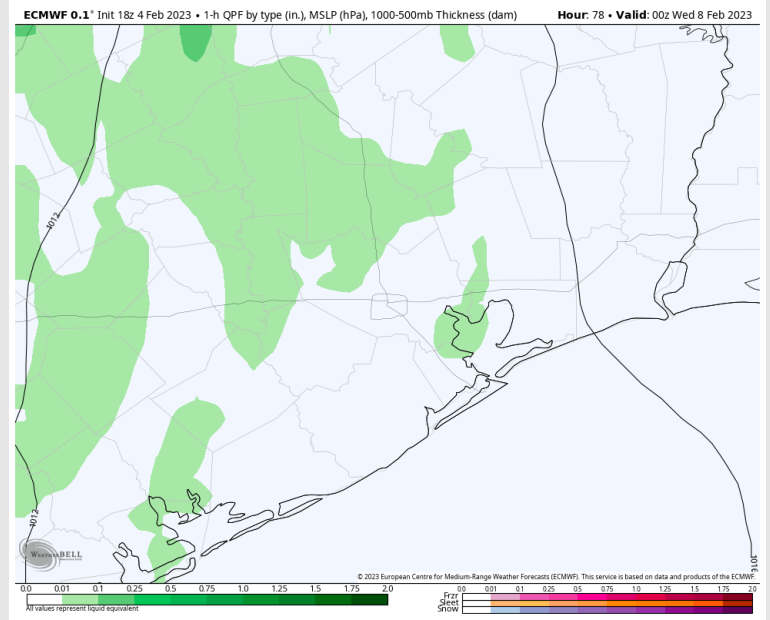
Precip: Anticipating dry conditions until 3 PM with a 30% chance of light showers slowly working their way into the picture from 4 PM – 10 PM. After 10 PM shower chances will increase slightly to 40%.

Wind: Sustained winds will be from the SE on Tuesday. Winds north of Moran's Point will be 8 – 13 kts, and south of Morgan's point will be 10 – 17 kts. Winds at the Boarding Station will begin to increase after 9 PM to around 16 – 20 kts. **Wind gusts of up to 22 kts will be possible across all stations after 1 PM.**

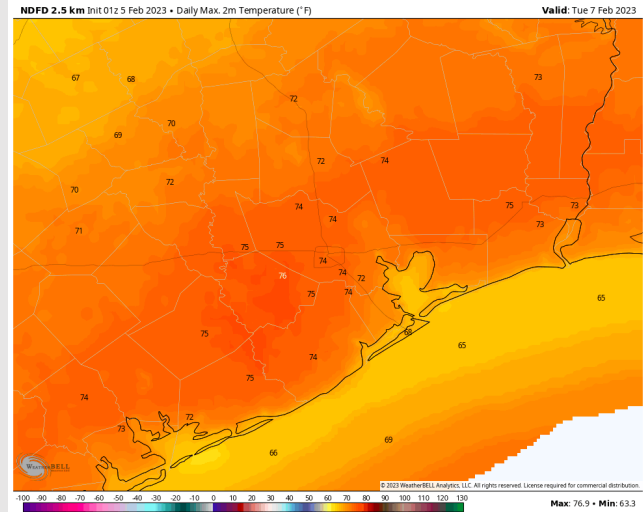
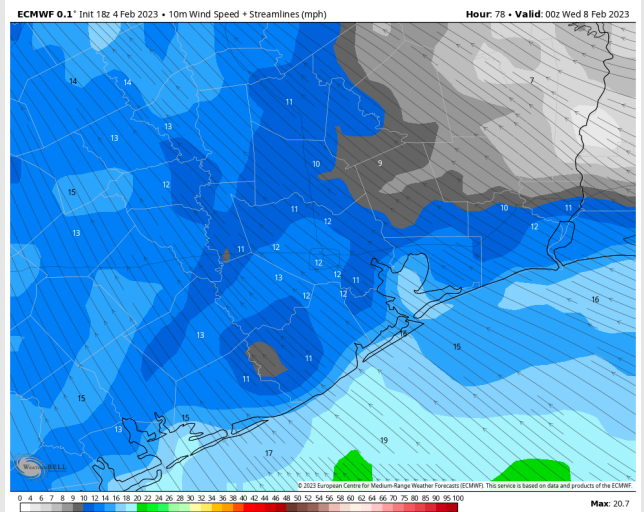
Temps: High temperatures Tuesday will be in the mid to lower 70s F north of Morgan's Point and in the mid to upper 60s F south of Morgan's Point.

Visibility: Reduced visibility from fog will be possible throughout the day as winds will consistently be from the SE at favorable speeds for sea fog transport. More details will be added in forthcoming updates.

Precip Forecast: 6 PM CT

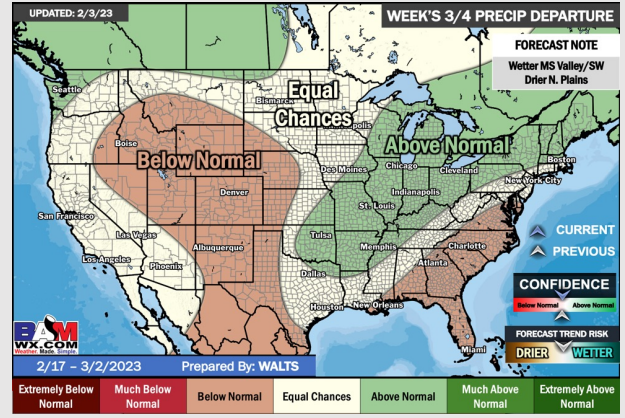
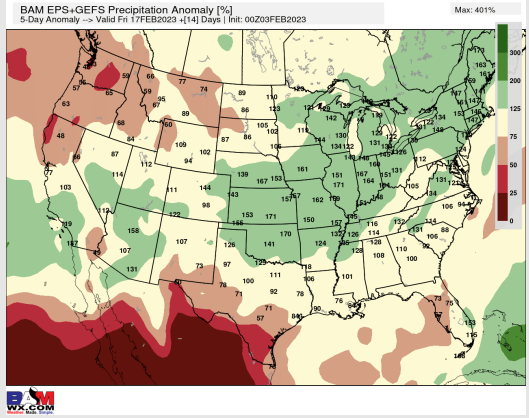
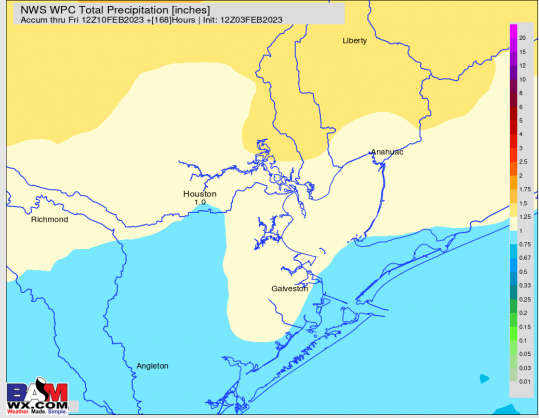
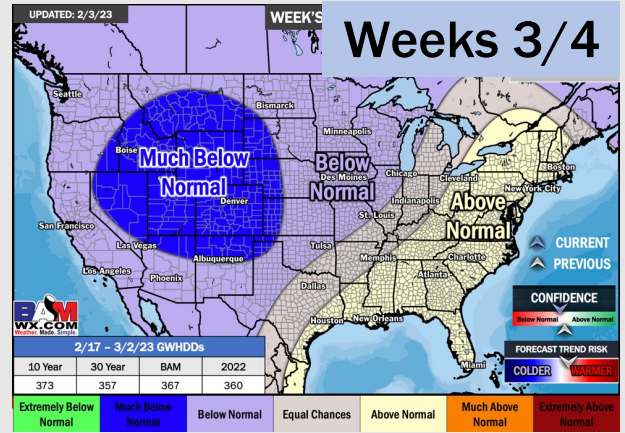
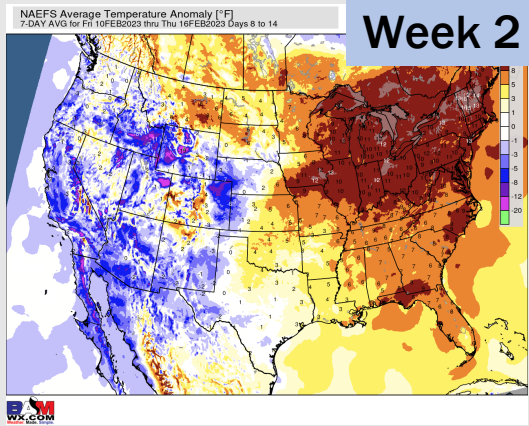
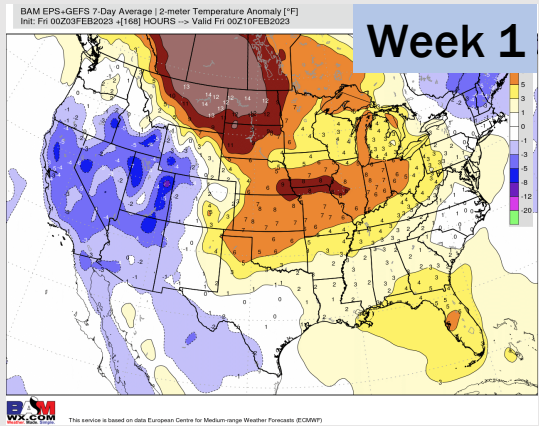


Wind Speed
6 PM CT



High Temps
Tuesday

Houston Pilots: 2/5/23



- Anticipating the second half of next week to be the better shot for rain with temperatures will be above average.
- Expecting near normal precipitation chances and above normal temperatures for the week 2 timeframe.
- Equal chances for precipitation and above normal temperatures favored in the week 3/4 timeframe.