

# Houston Pilots Forecast Package



Updated: 2:10 PM CT

Monday, February 20, 2023

Forecaster: Will Danby

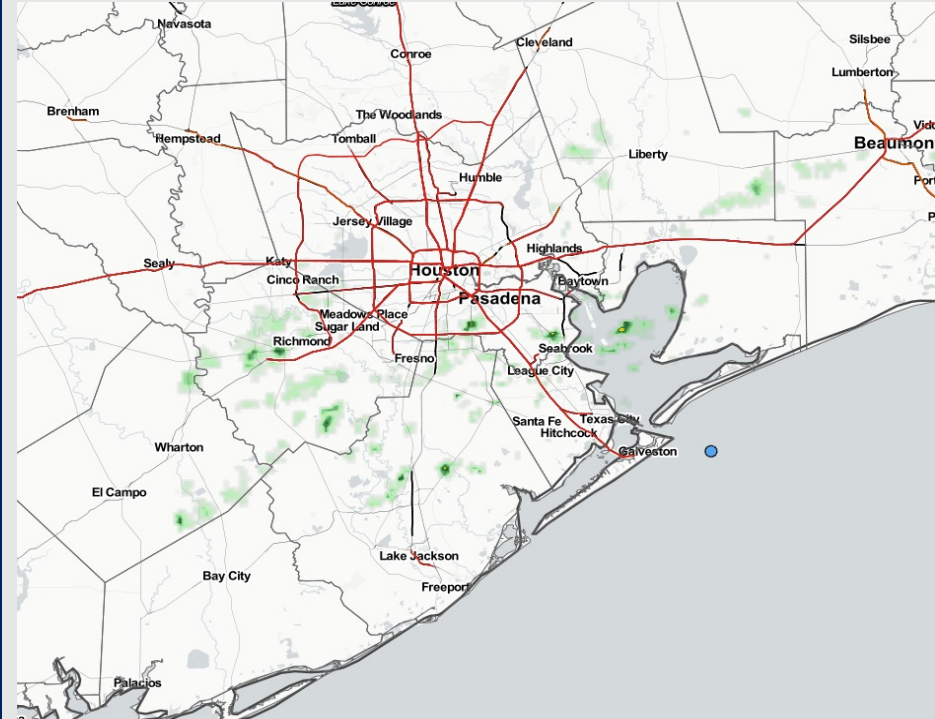
## Weather Headlines

➤ Multiple days of sea fog being possible (including today) as winds will be generally from the south. Check the visibility report for updated thoughts on fog this evening.

➤ Isolated shower chances on the order of <30% are expected through at least mid-week. This looks like a rather low-end risk.

➤ Winds will continue primarily out of the south (with variations to SW) over the coming days. A weak front tries to work in Thursday, but likely struggles to change wind direction.

➤ Wave heights of 5-7 feet will be possible late Wednesday AM through the sundown timeframe.



**Radar/NWS Alerts: 2:06 PM CT**



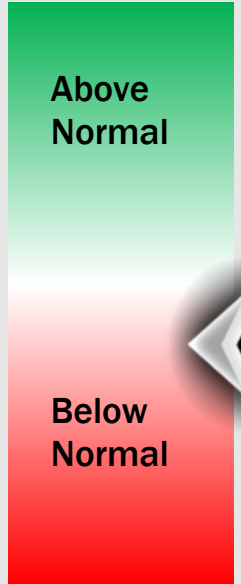
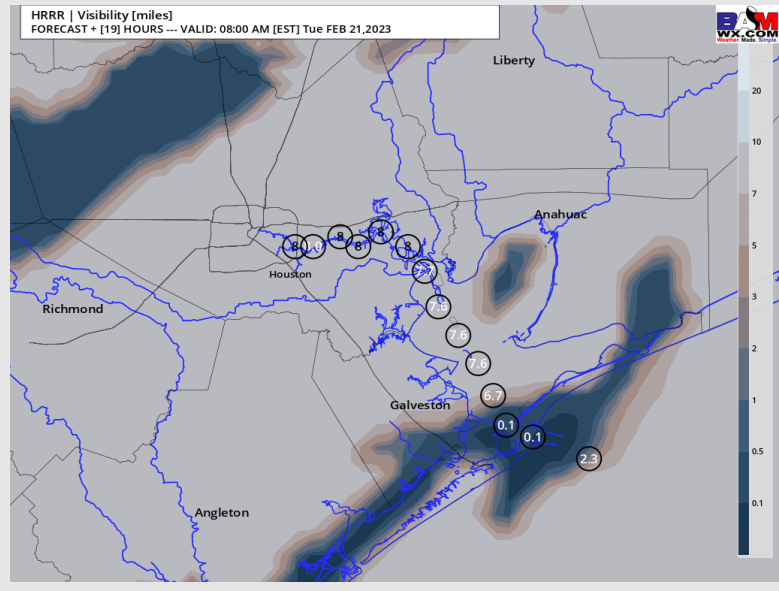
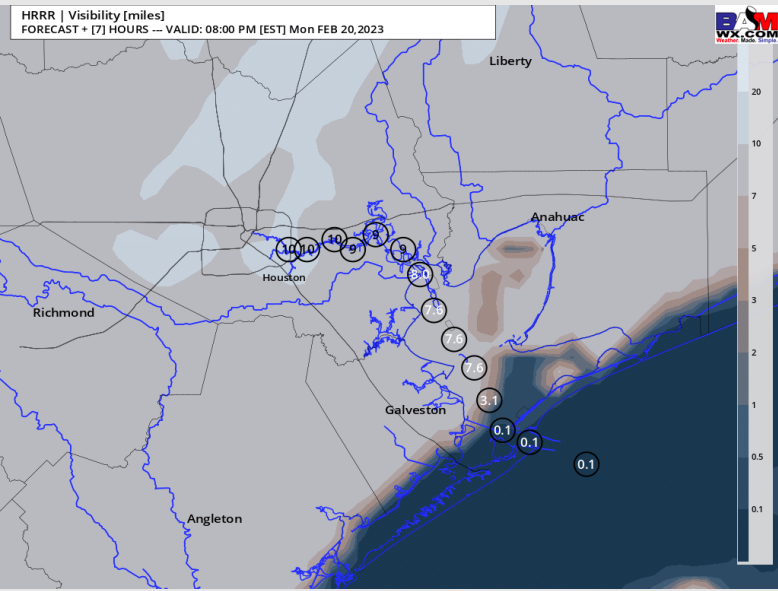
As always, please do not hesitate to reach out to us with any forecast questions via the chat option on the Weather Porthole or our on-call number, **(317)-560-8122** press 1 for forecast questions.

# Houston Pilots Visibility Report



## 7 PM-CT MON VISIBILITY      7 AM-CT TUE VISIBILITY

## Confidence



TIMEFRAME DISCUSSED	THREAT
CURRENT - 12 PM TUES	Medium

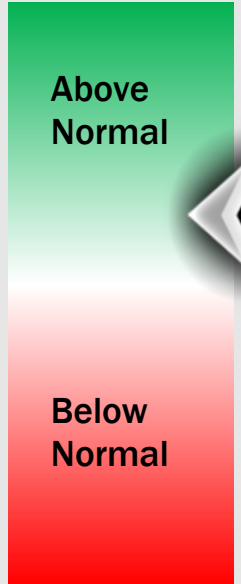
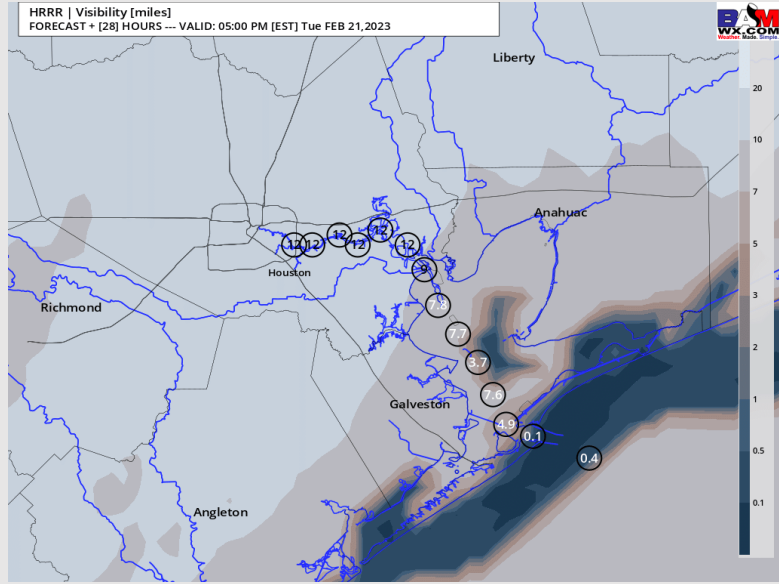
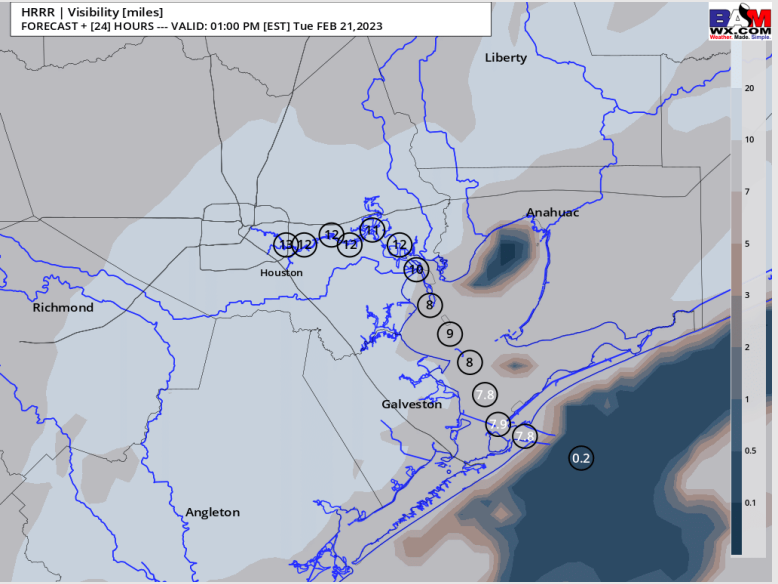
- Anticipating patchy fog to begin to creep back in toward the Boarding Station as early as 5 - 6 PM Monday evening, likely becoming more widespread and dense nearing the 8 - 9 PM timeframe.
- Stations south of Morgan's Point most at risk for visibilities of less than 2 miles with the Boarding Station most at risk for prolonged periods of reduced visibility of less than 1 mile. The best window to see less than one mile visibility at the Boarding Station will come between 8 - 11 PM.
- Expecting fog risk to break up between 3 - 6 AM TUES, however lower confidence remains for exact timing and coverage, as fog could potentially linger (especially for the Boarding Station) beyond the 7 AM timeframe.

# Houston Pilots Visibility Report



## 12 PM-CT TUE VISIBILITY      4 PM-CT TUE VISIBILITY

## Confidence



TIMEFRAME DISCUSSED	THREAT
12 PM TUE - 9 PM TUE	Low - Medium

- As noted in the previous slide, low confidence exists as to if sea fog can completely lift from the Boarding Station approaching the noon hour on Tuesday. It is possible during the 7 AM - 12 PM timeframe for patchy fog to linger around at 2 - 4-mile visibility (model guidance may be a bit too aggressive above)
- Towards 2 - 3 PM Tuesday higher confidence exists that denser fog could push in towards the Boarding Station at less than one mile visibility. This fog will push north from 2 - 5 PM impacting stations as far north as Morgan's Point. Anticipating visibilities with this fog to be in the 3 - 6-mile range with better chances of pockets of dense fog sitting just to the east of 75/76 through 37/38.
- This fog activity could lift between 5 - 7 PM with general improvements of visibility above 6 miles across all stations by 8 - 9 PM.

# Houston Pilots Extended Range Visibility Report



## Thursday 2/23/23

Southerly winds will be on the table again for Thursday in a more favorable range for sea fog.



## Saturday 2/25/23

SE winds will be possible for Saturday, allowing for sea fog risks to be valid yet again.



## Friday 2/24/23

SSE winds will be possible for Friday, keeping sea fog risks valid yet again.



## Chance for Reduced Visibility

Thursday AM	Possible
Thursday PM	Possible
Friday AM	Possible
Friday PM	Possible
Saturday AM	Possible
Saturday PM	Possible

# Houston Pilots Visibility Report



Refer to the slides above for the official BAM forecast. The chart may not be 100% accurate with fog.

Time	Mon 1pm	Mon 2pm	Mon 3pm	Mon 4pm	Mon 5pm	Mon 6pm	Mon 7pm	Mon 8pm	Mon 9pm	Mon 10pm	Mon 11pm	Tue 12am	Tue 1am	Tue 2am	Tue 3am	Tue 4am	Tue 5am	Tue 6am	Tue 7am	Tue 8am	Tue 9am	Tue 10am	Tue 11am	Tue 12pm	Tue 1pm	Tue 2pm	Tue 3pm	Tue 4pm	Tue 5pm	Tue 6pm	Tue 7pm	Tue 8pm	Tue 9pm	Tue 10pm	Tue 11pm	Wed 12am		
610 Bridge	10	10	10	10	10	10	10	10	10	10	10	9	8	7	6	6	4	4	3	3	6	10	10	10	10	10	10	10	10	10	10	10	10	7	6	7	10	10
Kinder 1	10	10	10	10	10	10	10	10	10	10	10	9	8	7	6	5	5	5	4	4	6	10	10	10	10	10	10	10	10	10	10	10	9	7	6	7	10	10
Greens Bayou	10	10	10	10	10	10	10	10	10	10	10	10	8	7	6	6	6	6	5	5	7	10	10	10	10	10	10	10	10	10	10	10	9	8	7	8	10	10
Shell Crude	10	10	10	10	10	10	10	10	10	10	10	10	9	7	6	6	5	7	7	7	7	7	10	10	10	10	10	10	10	10	10	10	9	9	8	8	10	10
Lynchburg Ferries	10	10	10	10	10	10	10	10	10	10	10	10	9	8	6	6	5	7	7	7	7	7	10	10	10	10	10	10	10	10	10	10	9	9	8	8	10	10
Exxon 3	10	10	10	10	10	10	10	10	10	10	10	10	9	6	6	5	7	7	7	7	7	7	9	10	10	10	10	10	10	10	10	9	9	9	8	8	9	10
Morgans Point	10	10	10	10	10	10	10	10	10	10	10	10	9	6	6	5	7	7	7	7	7	7	9	10	10	10	10	10	10	10	10	8	9	9	8	8	8	9
75/76	10	10	10	10	10	10	10	10	10	10	10	10	9	6	6	5	7	7	7	7	7	7	9	10	10	10	10	10	10	10	10	8	9	9	8	8	8	8
63/64	10	10	10	10	10	10	10	10	10	10	10	10	9	6	6	5	7	7	7	7	7	7	7	10	10	10	10	10	10	9	8	9	9	8	8	8	8	
51/52	10	10	10	10	10	10	10	10	10	10	10	10	9	6	6	5	7	7	7	7	7	7	7	9	10	10	10	10	9	9	8	9	9	8	8	8	8	
37/38	10	10	10	10	10	10	10	10	10	10	10	10	9	6	6	6	7	7	6	7	7	7	7	8	10	9	10	9	9	9	8	8	9	8	8	8	8	
25/26	10	10	10	10	10	10	10	10	10	10	10	10	8	6	6	6	7	7	7	7	7	7	7	9	9	9	9	9	9	9	8	9	9	8	8	8	8	
11/12	10	10	10	10	10	10	10	10	10	10	10	10	7	6	6	6	7	7	7	6	7	7	7	8	9	9	8	8	8	7	8	7	7	8	8	8	8	
1 & 2 Bravo	10	10	10	10	10	9	2	2	1	4	6	10	7	6	6	5	7	7	7	7	7	7	7	7	7	7	6	6	6	7	8	7	7	8	8	8	8	

# Houston Pilots Wind Report



**Example**

Sustained wind 13 Knots  
 Gusts 18 Knots  
 Wind from the N

WS: 13  
 G:18  
 N

Time Knots	Mon 1pm	Mon 2pm	Mon 3pm	Mon 4pm	Mon 5pm	Mon 6pm	Mon 7pm	Mon 8pm	Mon 9pm	Mon 10pm	Mon 11pm	Tue 12am	Tue 1am	Tue 2am	Tue 3am	Tue 4am	Tue 5am	Tue 6am	Tue 7am	Tue 8am	Tue 9am	Tue 10am	Tue 11am	Tue 12pm	Tue 1pm	Tue 2pm	Tue 3pm	Tue 4pm	Tue 5pm	Tue 6pm	Tue 7pm	Tue 8pm	Tue 9pm	Tue 10pm	Tue 11pm	Wed 12am	
610 Bridge	11	10	10	11	10	10	9	8	9	10	9	8	8	8	9	16	15	14	15	12	12	12	12	12	14	14	14	15	16	15	16	17	18	18	19	20	
	19 SW	20 SW	18 SW	20 SW	18 SW	20 SSW	23 SSW	23 SSW	25 SSW	27 SSW	23 SW	22 SW	22 SW	22 SW	25 SW	24 SW	23 SW	21 SW	22 SW	19 SW	18 SW	18 SW	18 SW	18 SW	19 SSW	21 SSW	21 SSW	22 SSW	23 SSW	24 SSW	25 SSW	25 SSW	28 SSW	28 SSW	29 SSW	30 SSW	
Kinder 1	12	10	10	11	10	10	9	8	9	10	9	8	8	8	8	15	15	14	14	12	12	12	12	12	13	14	14	15	16	15	16	16	17	18	18	19	20
	20 SW	19 WSW	18 SW	20 SW	18 SW	20 SSW	23 SSW	22 SSW	25 SSW	27 SSW	23 SW	22 SW	21 SW	22 SW	25 SW	23 SW	22 SW	21 SW	22 SW	18 SW	18 SW	18 SW	18 SW	18 SW	20 SSW	21 SSW	22 SSW	23 SSW	23 SSW	25 SSW	25 SSW	27 SSW	28 SSW	28 SSW	30 SSW		
Greens Bayou	12	10	11	11	10	9	9	8	9	10	9	8	7	7	8	15	15	14	14	12	11	11	11	12	13	14	14	15	15	15	16	16	18	18	18	19	19
	20 SW	19 WSW	18 SW	20 SW	18 SW	19 SSW	23 SSW	21 SSW	26 SSW	27 SSW	23 SW	22 SW	18 SW	21 SW	24 SW	23 SW	22 SW	21 SW	21 SW	18 SW	17 SW	17 SW	18 SSW	18 SSW	20 SSW	21 SSW	21 SSW	22 SSW	23 SSW	24 SSW	25 SSW	26 SSW	27 SSW	28 SSW	29 SSW		
Shell Crude	12	10	11	11	9	9	9	8	9	10	9	8	7	7	8	15	14	13	13	12	11	11	11	12	13	14	14	15	15	15	16	16	17	17	18	18	
	20 SW	19 SW	21 SW	19 SW	20 SSW	22 SSW	21 SSW	25 SSW	26 SSW	23 SW	21 SW	17 SW	20 SW	23 SW	22 SW	20 SW	20 SW	22 SW	20 SW	18 SW	17 SW	17 SW	17 SW	18 SSW	19 SSW	21 SSW	21 SSW	22 SSW	23 SSW	24 SSW	26 SSW	26 SSW	27 SSW	28 SSW			
Lynchburg Ferries	12	10	11	11	9	8	9	8	9	10	9	7	7	6	7	14	14	13	12	11	11	11	11	12	13	14	14	15	15	15	16	17	17	17	18		
	20 SW	19 SW	18 SW	20 SW	19 SSW	22 SSW	21 SSW	24 SSW	26 SSW	22 SW	19 SW	16 SW	17 SW	22 SW	22 SW	21 SW	20 SW	19 SW	17 SW	17 SW	17 SW	17 SW	17 SW	19 SSW	20 SSW	20 SSW	21 SSW	21 SSW	22 SSW	23 SSW	24 SSW	25 SSW	26 SSW	27 SSW			
Exxon 3	12	11	11	10	9	9	9	8	9	10	9	8	6	6	7	14	14	13	12	11	11	11	11	12	13	13	15	15	15	15	15	15	15	15	16	17	
	21 SW	20 SW	19 SW	19 SW	19 SSW	21 SSW	21 SSW	22 SSW	24 SSW	22 SW	17 SW	15 SW	15 SW	20 SW	20 SW	19 SW	18 SW	16 SW	16 SW	16 SW	16 SW	16 SW	16 SW	17 SSW	18 SSW	19 SSW	20 SSW	21 SSW	21 SSW	22 SSW	23 SSW	24 SSW	25 SSW				
Morgans Point	13	11	10	10	9	11	10	9	9	10	10	9	7	6	7	13	13	12	12	11	11	10	11	11	12	14	14	16	15	15	15	15	15	15	15	16	
	21 SW	22 SW	19 SW	18 SW	20 SSW	19 SSW	18 SSW	21 SSW	22 SSW	18 SSW	15 SW	15 SW	19 SW	18 SW	18 SW	18 SW	17 SW	15 SW	15 SW	16 SW	17 SW	18 SW	19 SSW	19 SSW	20 SSW	20 SSW	20 SSW	20 SSW	20 SSW	20 SSW	20 SSW	21 SSW	21 SSW	22 SSW			
75/76	13	10	10	10	11	12	10	10	11	11	10	8	8	8	8	13	13	12	12	11	11	11	11	12	13	14	15	17	17	16	16	15	16	16	17		
	21 SW	20 SW	18 SW	19 SSW	18 SSW	20 SSW	17 SSW	20 SSW	20 SSW	20 SSW	19 SSW	16 SW	16 SW	17 SSW	16 SW	17 SW	17 SW	15 SW	15 SW	15 SW	15 SW	15 SW	15 SW	16 SSW	17 SSW	18 SSW	19 SSW	20 SSW	20 SSW	19 SSW	19 SSW	18 SSW	19 SSW	20 SSW			
63/64	12	9	10	9	11	11	10	10	11	11	12	11	9	8	9	13	13	12	12	11	11	11	12	13	15	15	16	16	16	16	16	16	16	17	17		
	19 SW	18 SW	17 SW	16 SSW	18 SSW	19 SSW	16 SSW	16 SSW	18 SSW	19 SSW	20 SSW	16 SW	16 SW	17 SSW	16 SW	16 SW	16 SW	15 SW	14 SW	14 SW	14 SW	14 SW	15 SSW	16 SSW	17 SSW	18 SSW	19 SSW	19 SSW	18 SSW	18 SSW	18 SSW	18 SSW	19 SSW	20 SSW			
51/52	11	12	10	9	13	11	11	9	11	12	12	12	10	9	10	12	12	12	11	11	10	11	12	13	15	15	15	15	15	15	15	15	15	15	16	17	
	17 SSW	18 SSW	15 SSW	20 SSW	17 SSW	16 SSW	18 SSW	20 SSW	21 SSW	18 SSW	17 SSW	17 SSW	15 SSW	16 SSW	14 SSW	14 SSW	13 SSW	14 SSW	14 SSW	13 SSW	14 SSW	13 SSW	14 SSW	15 SSW	16 SSW	17 SSW	18 SSW	19 SSW	18 SSW	17 SSW	17 SSW	17 SSW	18 SSW	18 SSW	20 SSW		
37/38	12	12	10	11	14	11	11	10	11	13	13	13	12	10	11	12	12	12	11	11	10	11	12	13	14	14	14	14	14	14	14	14	15	15	16	16	
	17 SSW	19 SSW	16 SSW	17 SSW	22 SSW	18 SSW	18 SSW	17 SSW	18 SSW	20 SSW	21 SSW	21 SSW	19 SSW	19 SSW	16 SSW	15 SSW	14 SSW	14 SSW	13 SSW	14 SSW	13 SSW	14 SSW	15 SSW	16 SSW	16 SSW	18 SSW	18 SSW	17 SSW	16 SSW	16 SSW	17 SSW	17 SSW	18 SSW	19 SSW	21 SSW		
25/26	12	11	11	12	13	11	11	11	11	12	12	12	13	12	11	12	12	12	11	10	10	10	11	12	13	15	15	16	16	16	15	15	17	17	19	20	
	18 SW	18 SW	18 SW	19 SSW	21 SSW	19 SSW	17 SSW	18 SSW	20 SSW	21 SSW	21 SSW	21 SSW	20 SSW	19 SSW	17 SSW	16 SSW	15 SSW	14 SSW	14 SSW	14 SSW	14 SSW	14 SSW	14 SSW	15 SSW	15 SSW	16 SSW	16 SSW	16 SSW	15 SSW	15 SSW	17 SSW	17 SSW	19 SSW	20 SSW			
11/12	10	10	10	11	12	11	10	10	11	11	13	13	13	12	11	12	12	11	11	11	10	10	11	11	11	11	12	11	12	12	13	13	14	14	15	15	
	17 SW	16 SW	17 SW	18 SW	19 SSW	16 SSW	17 SSW	18 SSW	20 SSW	21 SSW	22 SSW	21 SSW	22 SSW	21 SSW	20 SSW	17 SSW	16 SSW	15 SSW	14 SSW	13 SSW	14 SSW	14 SSW	14 SSW	14 SSW	15 SSW	15 SSW	15 SSW	15 SSW	14 SSW	14 SSW	17 SSW	17 SSW	19 SSW	20 SSW			
1 & 2 Bravo	7	7	8	9	9	10	11	9	10	11	14	14	15	13	12	14	13	13	12	12	11	11	10	10	10	11	12	12	13	14	15	16	16	17	17		
	12 SW	12 SW	15 SW	16 SW	16 SSW	19 SSW	19 SSW	20 SSW	22 SSW	23 SSW	25 SSW	25 SSW	23 SSW	22 SSW	18 SSW	17 SSW	17 SSW	17 SSW	15 SSW	14 SSW	14 SSW	14 SSW	14 SSW	13 SSW	13 SSW	15 SSW	14 SSW	14 SSW	16 SSW	18 SSW	18 SSW	19 SSW	20 SSW	21 SSW			

# Houston Pilots: Mon. 2/20/2023



## Forecast Discussion

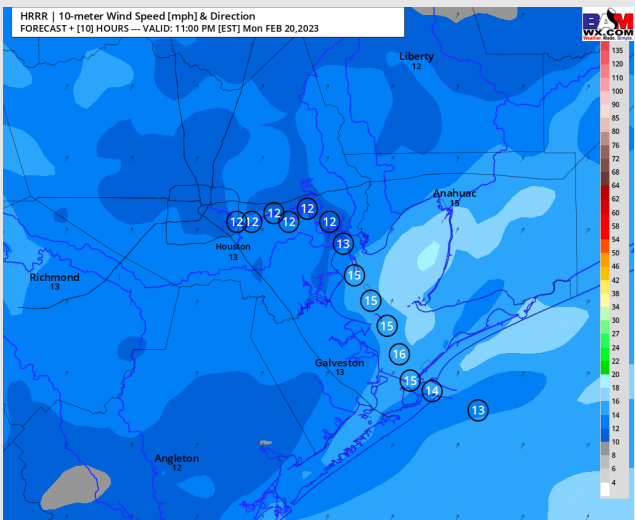
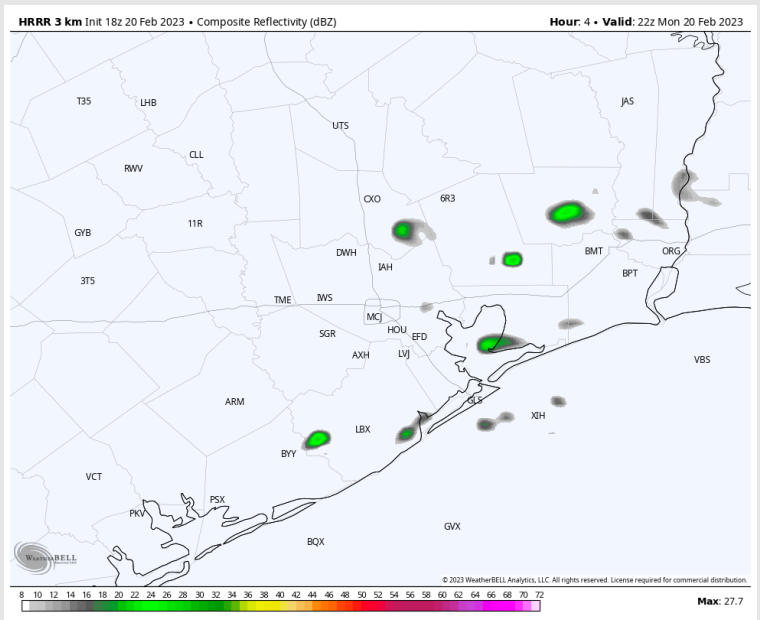
**Precip:** A 25% chance for a passing shower will be possible until 7 PM. Beyond 7 PM, once again favoring dry conditions.

**Wind:** Winds will continue from the SW for this afternoon and early Tuesday AM at 10 – 15 kts across all stations. A couple of pockets of up to 17 kts will be possible towards the Boarding Station and 11/22 mainly towards the midnight hour. **Wind gusts of up to 24 kts will be possible across all stations, with better chances of seeing gusts after 9 PM.**

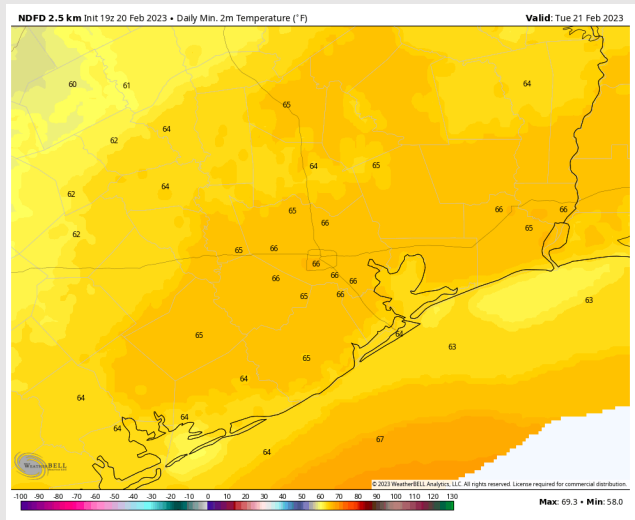
**Temps:** Low temperatures Tuesday AM will be in the mid 60s F across all stations.

**Visibility:** Check visibility slides above for more information.

## Precip Forecast: 4 PM CT



Wind Speed  
10 PM CT



Tuesday AM  
Low Temp

# Houston Pilots: Tue. 2/21/2023



## Forecast Discussion

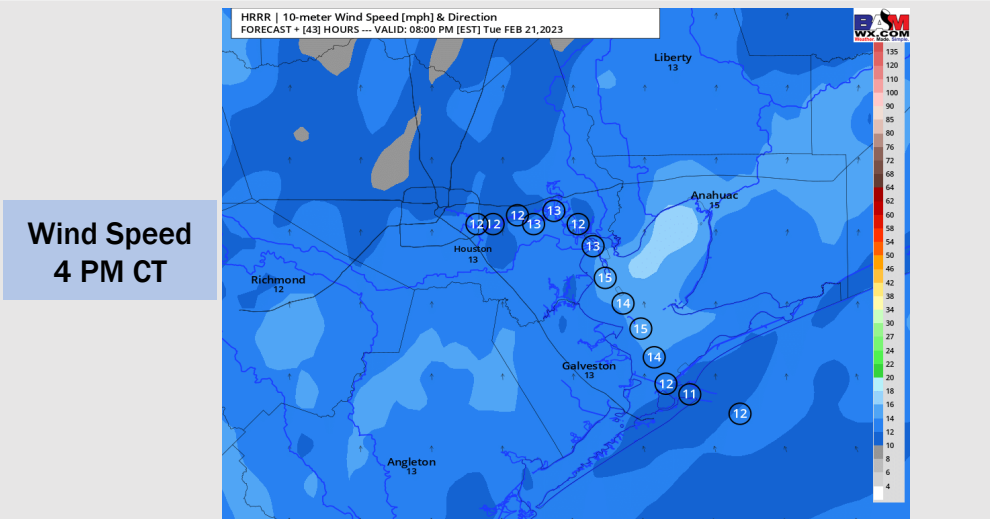
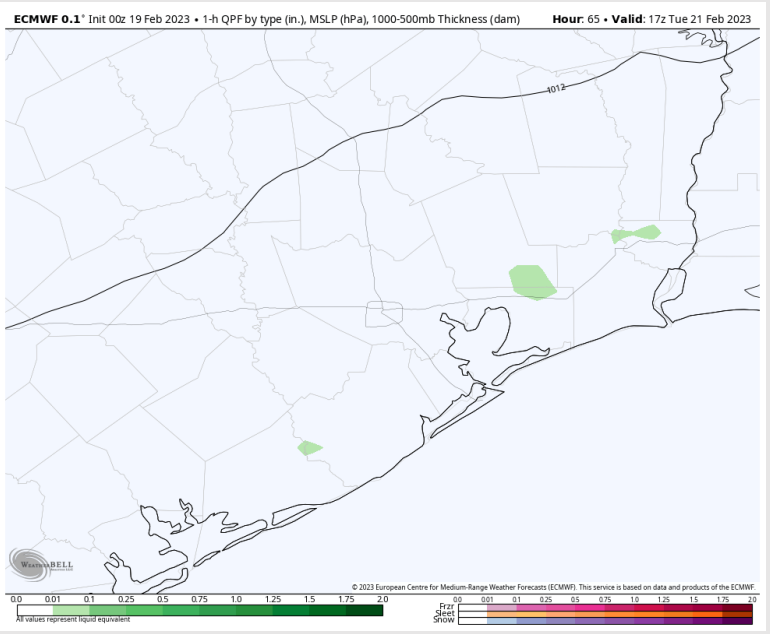
**Precip:** Anticipating dry conditions for Tuesday with a 20% chance for a passing shower between 1 PM – 4 PM.

**Wind:** Sustained winds will be from the SW on Tuesday, shifting more southerly by 4 PM. Winds across all stations will be around 10 – 15 kts. Towards 5 PM, winds will increase slightly at 11/12 and the Boarding Station at 15 – 20 kts. A few gusts of 18-23 knots will be possible at the boarding station.

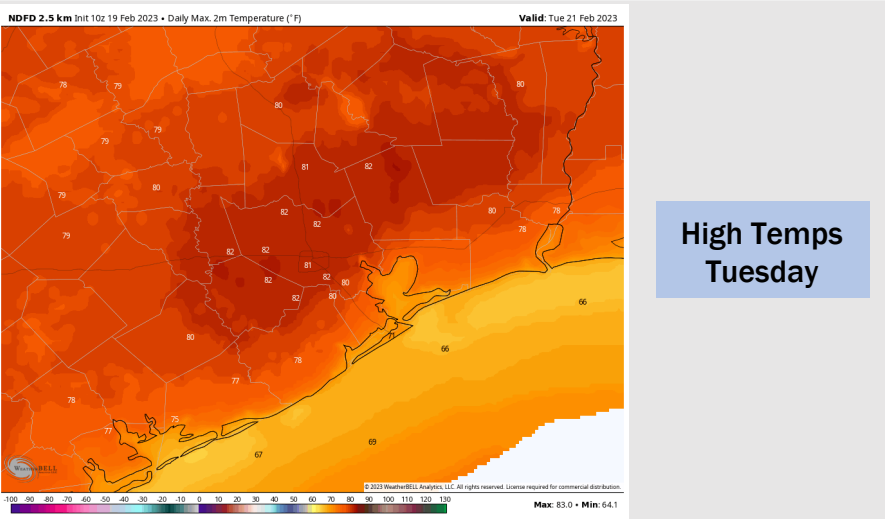
**Temps:** High temperatures will be in the low 80s F north of Morgan’s Point and in the mid to upper 70s F south of Morgan’s Point. Temps towards 11/12 and the Boarding Station will be in the mid to upper 60s F.

**Visibility:** Sea Fog threat is looking likely for Tuesday, especially during the early AM hours where it could be particularly dense. More on the slides above.

## Precip Forecast: 11 AM CT



Wind Speed  
4 PM CT



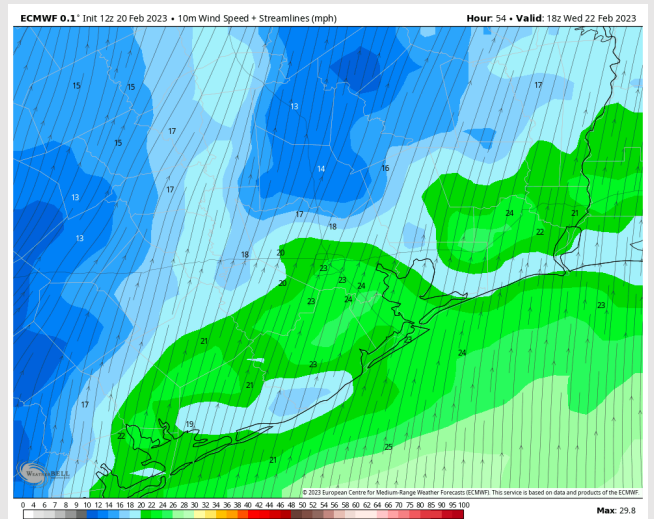
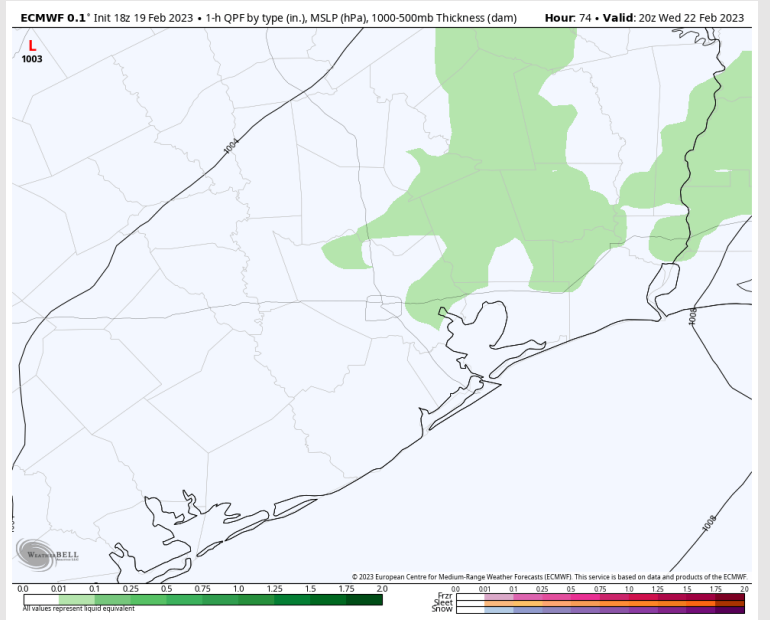
High Temps  
Tuesday



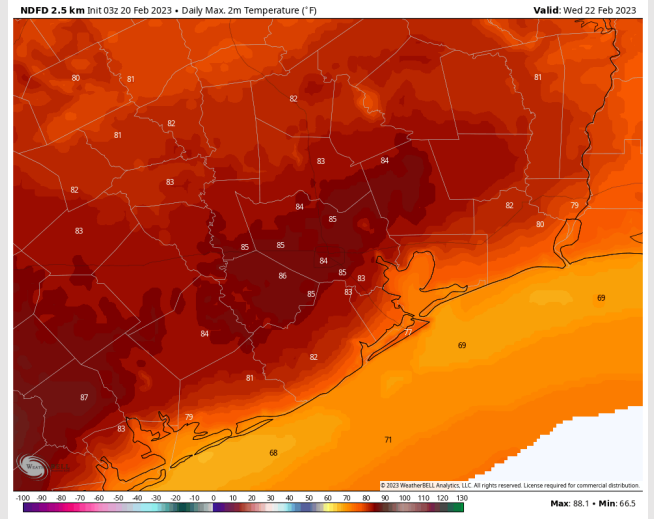
## Forecast Discussion

- Precip:** Anticipating dry conditions Wednesday with 20% chance of passing showers between 12 – 5 PM.
- Wind:** Sustained southerly winds throughout the day Wednesday. Winds north of Morgan’s Point will be at 10 – 14 kts and winds south of Morgan’s Point will be at 14-19 kts until 9 AM. After 9 AM, winds at all stations will increase to 19 – 24 kts until 3 PM. Winds will gradually decrease to 10 – 16 kts for all stations and stay that way into the overnight.
- Temps:** High temperatures Wednesday will be in the mid to low 80s north of Morgan’s Point and in the upper 70s F south of Morgan’s Point.
- Visibility:** Not anticipating sea fog threat due to strong winds. Will need to monitor.

## Precip Forecast: 2 PM CT

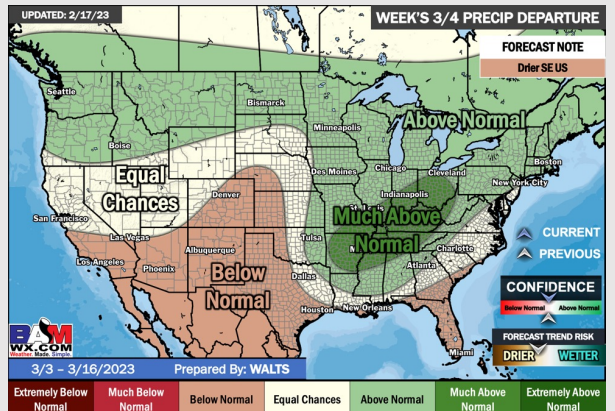
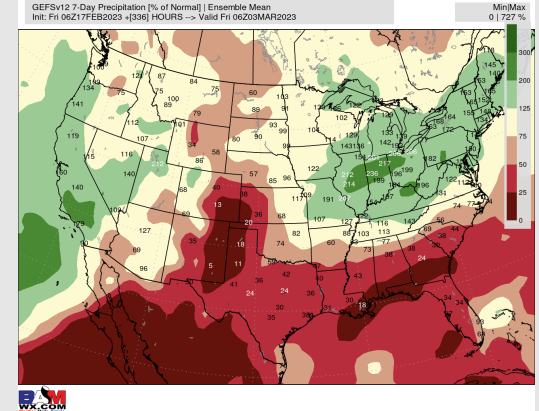
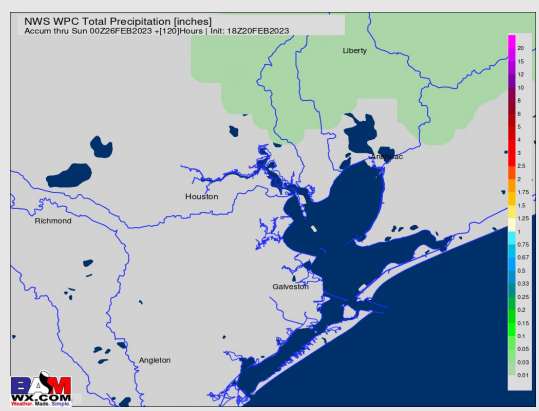
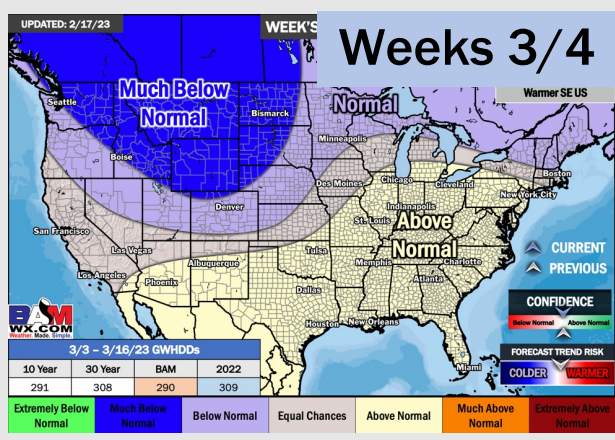
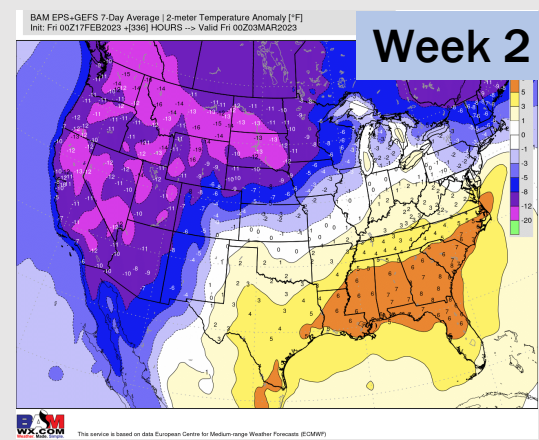
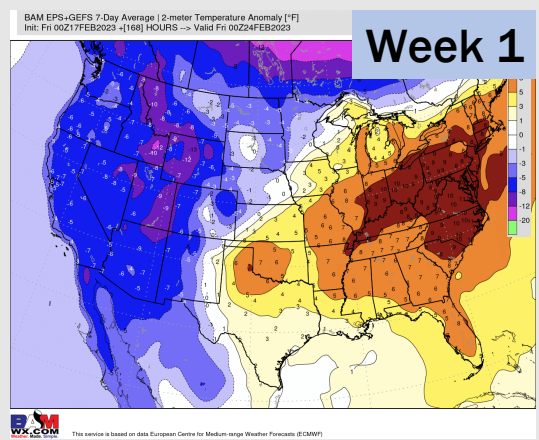


Wind Speed 6 PM CT



High Temps Wednesday

# Houston Pilots: 2/20/23



- Daily, isolated rain chances will be around for much of the week. These are low end chances with totals staying rather low. Temps expected to stay above average.
- Expecting below normal precipitation chances and above normal temperatures for the week 2 timeframe.
- Below normal chances for precipitation and above normal temperatures favored in the week 3/4 timeframe.