

# Houston Pilots Forecast Package



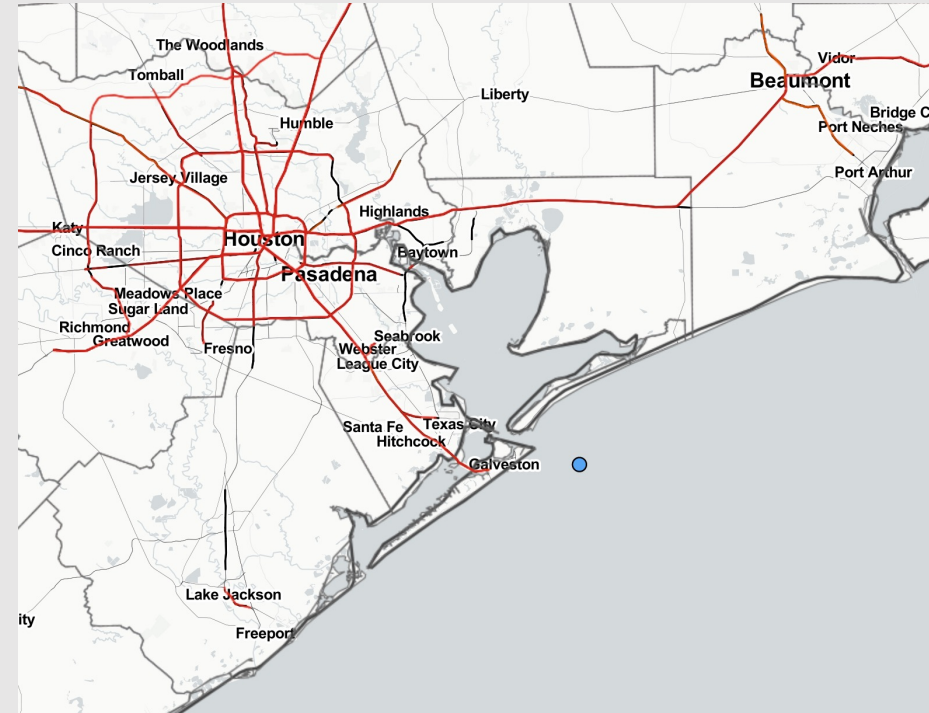
Updated: 2:15 PM CT

Sunday, February 19, 2023

Forecaster: Alyssa McClung

## Weather Headlines

- Not anticipating any fog concerns for today. **A low-end risk for sea fog will be possible Monday morning with better fog chances arriving during the afternoon.**
- Dry conditions are expected for this evening with the next light shower activity possible Monday and Tuesday afternoon. These shower chances will be very light (30% or less)
- Winds will generally stay within the 5 – 15 kt range over the next three days with a few pockets of gusts of up to 22 kts on Monday and Tuesday.



**Radar/NWS Alerts: 2:15 PM CT**



As always, please do not hesitate to reach out to us with any forecast questions via the chat option on the Weather Porthole or our on-call number, **(317)-560-8122** press 1 for forecast questions.

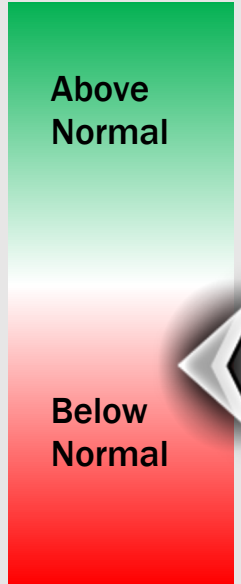
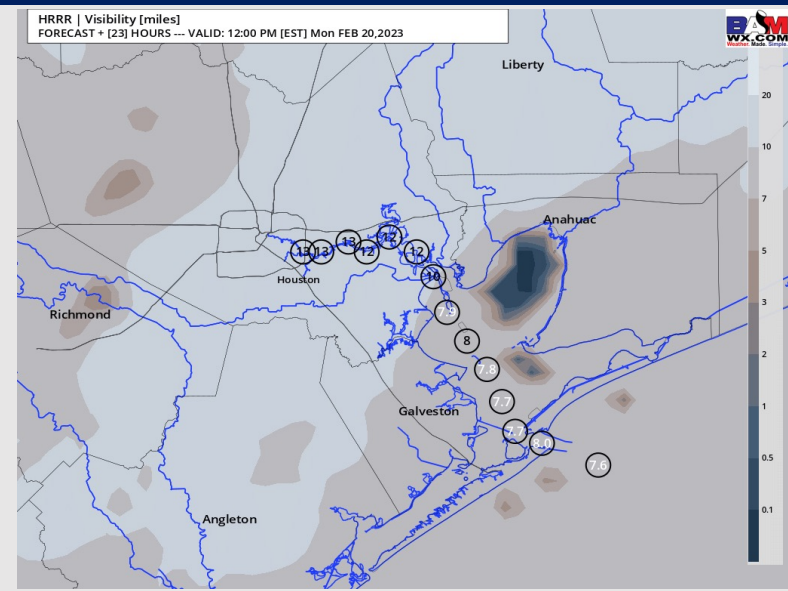
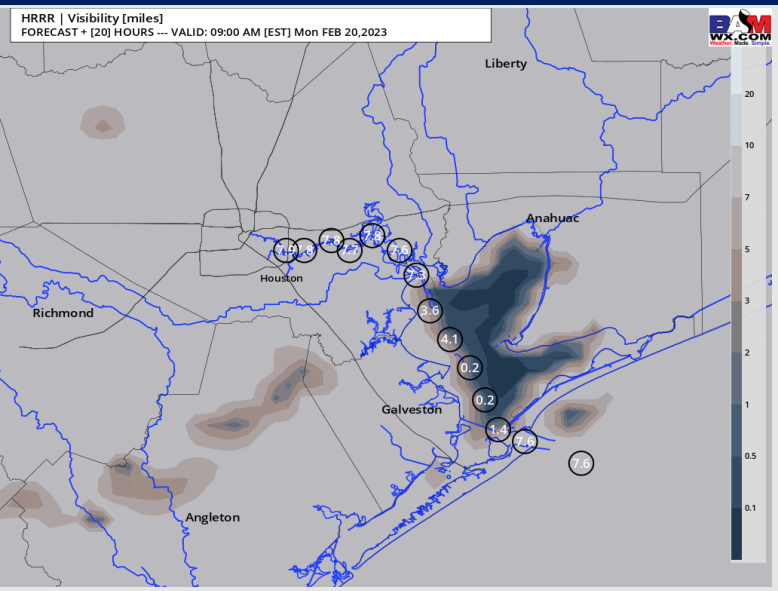
# Houston Pilots Visibility Report



## 8 AM-CT MON VISIBILITY

## 11 AM-CT MON VISIBILITY

## Confidence



TIMEFRAME DISCUSSED	THREAT
1 AM MON - 10 AM MON	Low

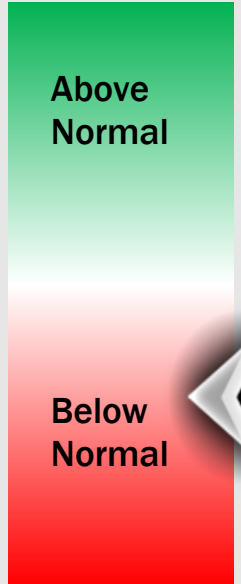
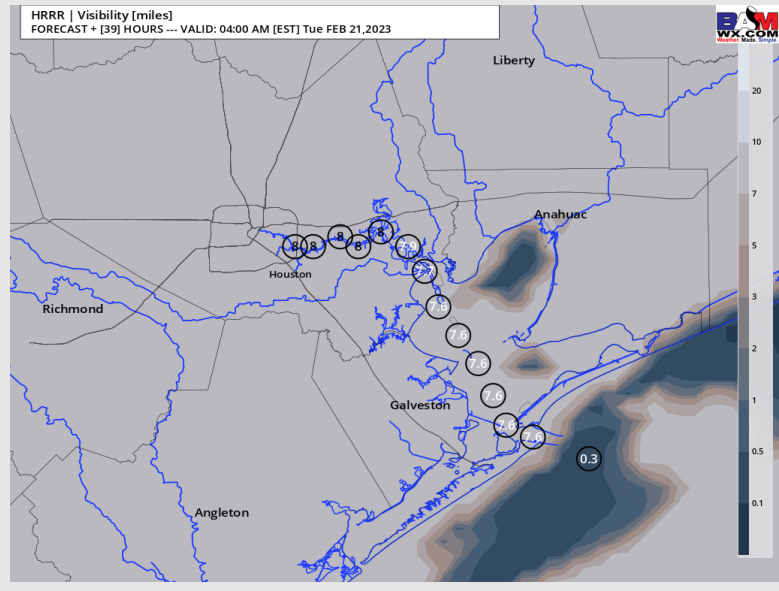
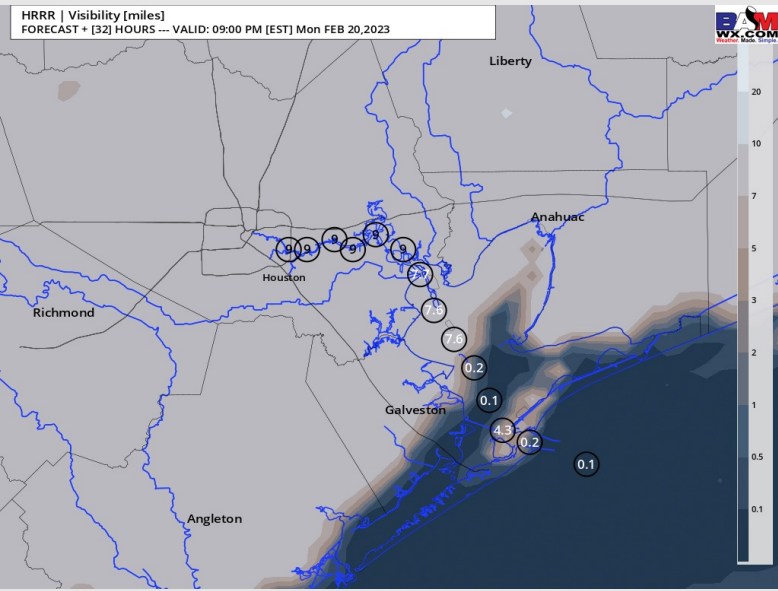
- Low end risk for reduced visibility due to patchy fog/low cloud deck between 1 - 10 AM CT Monday with the greatest risk being from 5 - 10 AM CT.
- Anticipating visibilities of 2 - 4 miles to be possible at times, especially for stations south of Morgan's Point.
- After 10 AM, expecting low cloud deck / patchy fog to lift out of the area leaving clearer conditions for all stations through the lunch timeframe.

# Houston Pilots Visibility Report



## 8 PM-CT MON VISIBILITY      3 AM-CT TUE VISIBILITY

## Confidence



TIMEFRAME DISCUSSED	THREAT
3 PM MON - 12 AM TUES	Low - Med

- Anticipating patchy fog to begin to creep back in toward the Boarding Stations around 3 - 4 PM Monday evening, likely becoming more widespread and dense nearing the 7 PM timeframe.
- Stations south of Morgan's Point most at risk for visibilities of less than 2 miles with the Boarding Station most at risk for prolonged periods of reduced visibility of less than 1 mile.
- Expecting fog risk to break up after 3 AM TUES, however lower confidence remains for exact timing and coverage, as fog could potentially linger (especially for the Boarding Station) beyond the 3 AM timeframe.

# Houston Pilots Extended Range Visibility Report



## Wednesday 2/22/23

Sustained winds from the S for Wednesday, thus sea fog potentials are present again. Winds look to be particularly strong (20 – 25 kts) which could limit initialization of sea fog.



## Friday 2/24/23

SSE winds will be possible for Friday, keeping sea fog risks valid yet again.



## Thursday 2/23/23

Southerly winds will be on the table again for Thursday in a more favorable range for sea fog.



## Chance for Reduced Visibility

Wednesday AM	Possible
Wednesday PM	Possible
Thursday AM	Possible
Thursday PM	Possible
Friday AM	Possible
Friday PM	Possible

# Houston Pilots Visibility Report



Refer to the slides above for the official BAM forecast. The chart is likely not 100% accurate with fog.

Time	Sun 1pm	Sun 2pm	Sun 3pm	Sun 4pm	Sun 5pm	Sun 6pm	Sun 7pm	Sun 8pm	Sun 9pm	Sun 10pm	Sun 11pm	Mon 12am	Mon 1am	Mon 2am	Mon 3am	Mon 4am	Mon 5am	Mon 6am	Mon 7am	Mon 8am	Mon 9am	Mon 10am	Mon 11am	Mon 12pm	Mon 1pm	Mon 2pm	Mon 3pm	Mon 4pm	Mon 5pm	Mon 6pm	Mon 7pm	Mon 8pm	Mon 9pm	Mon 10pm	Mon 11pm	Tue 12am	
610 Bridge	10	10	10	10	10	10	10	10	10	10	10	9	7	6	6	6	6	6	4	4	6	9	10	10	10	10	10	10	10	10	10	10	10	9	7	6	5
Kinder 1	10	10	10	10	10	10	10	10	10	10	10	9	7	6	6	6	6	6	5	4	6	9	10	10	10	10	10	10	10	10	10	10	10	9	7	6	5
Greens Bayou	10	10	10	10	10	10	10	10	10	10	10	10	7	6	6	6	7	7	6	4	5	9	10	10	10	10	10	10	10	10	10	10	10	10	7	6	5
Shell Crude	10	10	10	10	10	10	10	10	10	10	10	9	7	6	6	6	7	7	7	4	5	9	10	10	10	10	10	10	10	10	10	10	10	9	8	6	5
Lynchburg Ferries	10	10	10	10	10	10	10	10	10	10	10	10	7	6	6	6	7	7	7	4	5	9	10	10	10	10	10	10	10	10	10	10	10	10	8	6	5
Exxon 3	10	10	10	10	10	10	10	10	10	10	10	10	7	6	6	6	7	7	7	4	5	9	10	10	10	10	10	10	10	10	10	10	10	8	8	6	5
Morgans Point	10	10	10	10	10	10	10	10	10	10	10	10	7	6	6	6	7	7	7	4	5	9	10	10	10	10	10	10	10	10	10	10	10	8	8	6	5
75/76	10	10	10	10	10	10	10	10	10	10	10	10	7	6	6	6	7	7	7	4	6	9	10	10	10	10	10	10	10	10	10	10	10	8	8	6	6
63/64	10	10	10	10	10	10	10	10	10	10	10	10	7	7	6	6	7	7	7	4	6	9	10	10	10	10	10	10	10	10	10	10	10	8	8	6	6
51/52	10	10	10	10	10	10	10	10	10	10	10	10	7	7	6	6	7	7	7	4	7	10	10	10	10	10	10	10	10	10	10	10	9	8	6	6	
37/38	10	10	10	10	10	10	10	10	10	10	10	10	7	7	6	6	7	7	7	4	7	9	10	10	10	10	10	10	10	10	10	10	8	7	5	5	
25/26	10	10	10	10	10	10	10	10	10	10	10	10	7	7	6	6	7	7	7	5	7	9	10	10	10	10	10	10	10	10	10	10	8	6	5	5	
11/12	10	10	10	10	10	10	10	10	10	10	10	10	7	7	6	6	7	7	7	7	7	10	10	10	10	10	10	10	10	10	8	7	6	5	4	5	
1 & 2 Bravo	10	10	10	10	10	10	10	10	10	10	10	9	6	6	5	6	7	7	7	7	7	8	9	9	9	9	8	9	9	9	9	8	5	5	4	3	



# Houston Pilots Wind Report



## Confidence



## Example

Sustained wind 13 Knots  
Gusts 18 Knots  
Wind from the N

WS: 13  
G:18  
N

Time Knots	Sun 12pm	Sun 1pm	Sun 2pm	Sun 3pm	Sun 4pm	Sun 5pm	Sun 6pm	Sun 7pm	Sun 8pm	Sun 9pm	Sun 10pm	Sun 11pm	Mon 12am	Mon 1am	Mon 2am	Mon 3am	Mon 4am	Mon 5am	Mon 6am	Mon 7am	Mon 8am	Mon 9am	Mon 10am	Mon 11am	Mon 12pm	Mon 1pm	Mon 2pm	Mon 3pm	Mon 4pm	Mon 5pm	Mon 6pm	Mon 7pm	Mon 8pm	Mon 9pm	Mon 10pm	Mon 11pm	
610 Bridge	5	6	6	5	5	6	6	5	6	7	5	4	3	3	3	6	6	6	6	7	8	9	11	12	13	13	13	13	12	12	12	12	12	13	13	14	14
	9	9	9	8	8	9	10	12	14	16	12	10	9	10	10	9	9	10	10	12	14	17	18	19	20	20	20	19	19	18	18	18	19	20	21	21	
Kinder 1	4	6	6	5	5	6	6	6	7	7	5	4	2	3	3	6	6	6	7	8	9	11	12	12	13	13	13	12	12	12	12	12	12	13	14	14	
	9	8	9	7	8	9	12	13	14	15	12	10	9	10	10	9	9	10	10	12	14	17	19	20	20	20	19	19	18	18	19	20	21	21	21	21	
Greens Bayou	4	5	5	5	5	6	7	6	7	6	5	3	2	3	3	6	6	7	7	8	9	11	11	12	12	13	12	12	12	12	11	12	12	13	14	14	
	9	8	8	8	9	10	13	14	15	14	11	10	9	10	10	9	9	10	10	12	14	17	17	18	19	19	19	18	18	18	17	18	18	19	21	21	
Shell Crude	4	5	6	6	7	7	7	7	7	6	5	4	3	3	3	6	6	7	7	8	9	11	11	12	12	12	12	12	12	12	12	11	12	12	13	13	
	9	8	9	9	10	12	14	15	15	14	12	10	10	10	11	9	9	10	11	12	14	16	17	18	19	19	19	18	18	17	18	18	19	20	20	20	
Lynchburg Ferries	3	5	6	8	8	8	7	6	8	6	5	4	3	3	3	6	6	7	7	8	9	11	11	12	12	12	12	12	12	12	11	12	12	12	13	13	
	9	9	10	11	11	13	14	14	15	13	12	10	10	10	11	9	9	10	11	12	14	16	17	18	19	18	18	18	18	18	18	17	17	17	18	19	19
Exxon 3	5	5	7	9	9	8	7	7	8	6	6	4	3	3	3	6	6	7	7	8	9	11	11	11	12	12	12	12	12	12	11	12	12	11	12	12	
	8	9	10	12	13	14	15	14	15	13	13	11	11	11	11	9	9	10	10	12	13	16	17	17	18	18	18	17	17	17	16	16	16	16	17	18	
Morgans Point	6	6	7	10	10	10	8	9	8	7	7	5	4	4	4	7	6	7	7	8	9	11	11	11	11	12	12	12	12	13	13	13	13	12	12	12	
	8	9	11	14	15	16	16	14	15	14	13	12	12	12	12	9	9	10	11	13	15	16	16	17	17	17	17	17	17	17	16	16	16	16	15	15	16
75/76	5	6	8	11	12	11	10	10	10	9	8	7	6	6	6	7	7	8	8	9	10	11	11	11	11	11	12	13	13	14	15	15	15	14	13	13	13
	9	10	13	15	15	16	16	14	16	16	14	14	14	14	13	9	8	9	10	11	12	14	15	15	16	16	17	17	17	17	17	17	16	15	15	16	
63/64	4	6	10	12	11	11	10	10	10	10	8	7	8	8	6	7	7	8	9	9	10	11	11	11	11	12	13	14	14	14	16	16	15	14	13	13	13
	8	10	13	15	15	16	15	13	16	16	14	14	15	15	14	8	8	9	10	11	12	14	14	14	15	15	16	16	16	17	18	17	16	15	15	15	
51/52	4	6	9	11	10	10	10	9	10	10	8	8	9	8	6	7	7	7	8	9	10	10	10	11	11	11	12	13	14	15	16	16	15	14	13	12	13
	7	9	11	14	14	15	13	13	15	16	14	14	15	15	13	8	8	8	9	10	12	13	14	14	14	15	16	17	17	18	18	16	15	14	14	14	14
37/38	4	6	8	10	9	9	8	9	9	8	7	9	8	6	7	7	7	7	8	8	10	10	10	11	12	12	13	14	15	15	15	15	15	14	12	12	12
	7	9	10	12	13	14	12	12	15	15	14	14	15	15	14	9	8	8	9	10	11	12	14	14	15	16	17	18	18	18	18	17	16	14	14	14	14
25/26	5	6	7	8	8	8	7	7	8	8	7	7	8	7	6	7	6	7	7	8	9	10	10	11	12	12	13	14	14	14	13	12	11	11	11	11	11
	8	9	10	11	12	13	11	12	15	14	14	13	15	14	14	9	9	9	9	9	11	12	13	14	15	15	17	17	18	17	16	15	14	13	13	14	14
11/12	5	5	6	7	6	6	6	7	9	8	7	8	7	6	7	7	7	7	8	8	9	10	10	11	11	11	13	13	13	13	13	13	12	11	11	11	11
	8	9	10	10	10	12	12	13	15	15	14	14	16	14	14	9	9	9	9	10	11	12	13	14	14	15	16	17	17	17	15	15	14	14	13	14	14
1 & 2 Bravo	4	3	4	6	5	6	7	8	10	9	9	9	9	8	8	9	9	9	10	10	10	11	11	11	10	11	12	13	13	14	14	14	14	13	13	13	13
	6	5	6	8	8	11	14	14	15	15	16	16	16	15	15	10	10	10	10	11	11	12	13	14	14	14	15	16	16	15	15	15	14	14	14	14	15

## Forecast Discussion

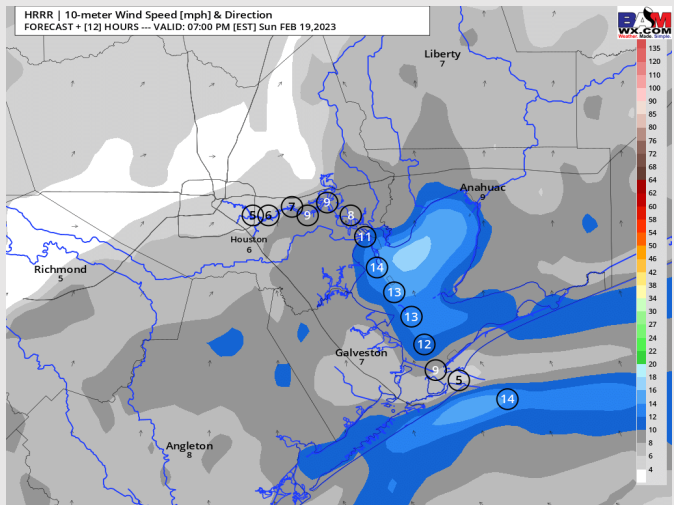
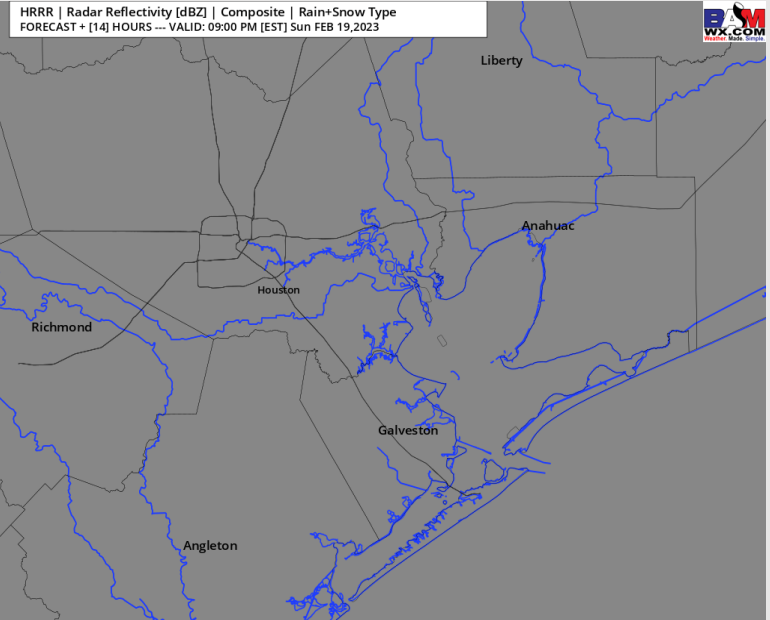
**Precip:** Anticipating dry conditions throughout the day today.

**Wind:** Sustained winds out of the S/SE at 5-11 kts for stations north of Morgan's Point. Stations south of Morgan's Point will see an increase in winds to 9-15 kts until 8 PM, before returning back to 5-11 kts for the rest of the evening.

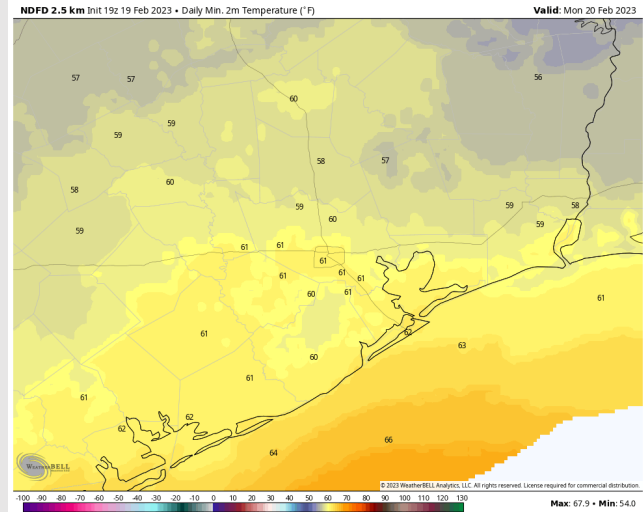
**Temps:** Low temperatures Monday AM in the low 60s F for all stations.

**Visibility:** Not anticipating any fog risks for today.

## Precip Forecast: 8 PM CT



Wind Speed  
6 PM CT



Low Temps  
Monday AM

## Forecast Discussion

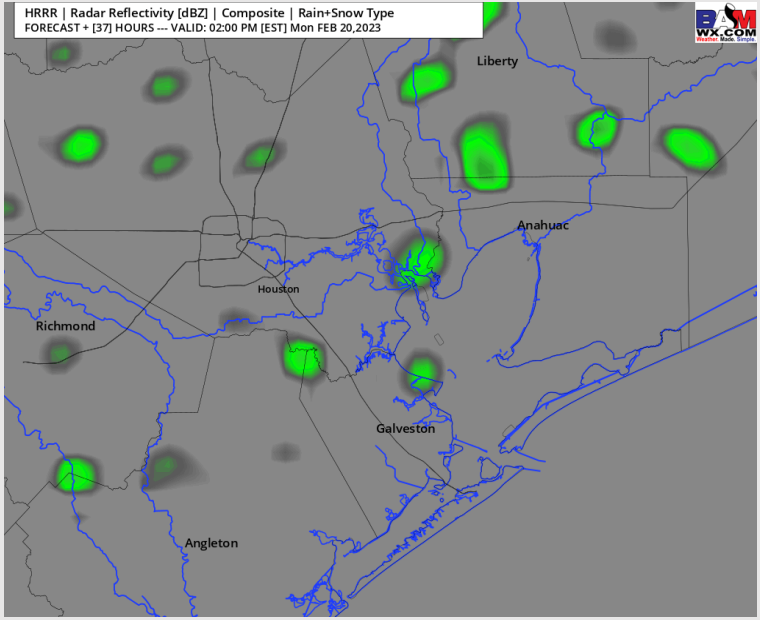
**Precip:** Anticipating dry conditions for Monday morning. A 20% chance for a passing shower will be possible between 12 PM – 7 PM. Beyond 8 PM, once again favoring dry conditions,

**Wind:** Southerly winds during the early AM hours will be more SW by 4 AM and remain as such for the rest of the day. Winds north of Morgan’s Point will start at 4 – 8 kts and south of Morgan’s point at 7 – 12 kts. By 11 AM, winds will increase slightly to 10 – 16 kts and remain as such for the rest of the day. A few pockets of up to 18 kts will be possible south of Morgan’s Point. **Wind gusts of up to 23 kts will be possible across all stations between 2 – 5 PM.**

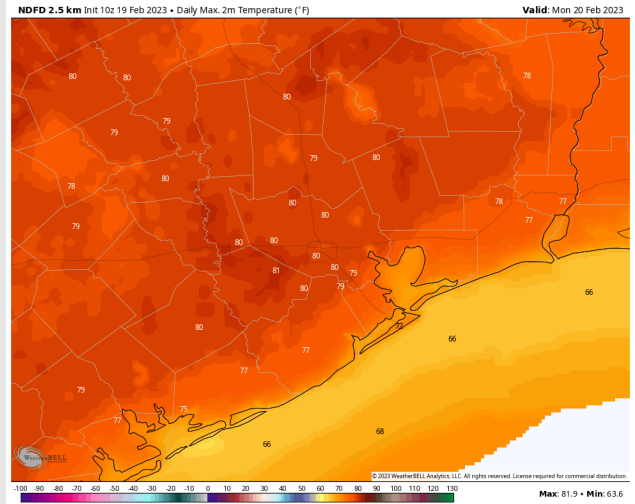
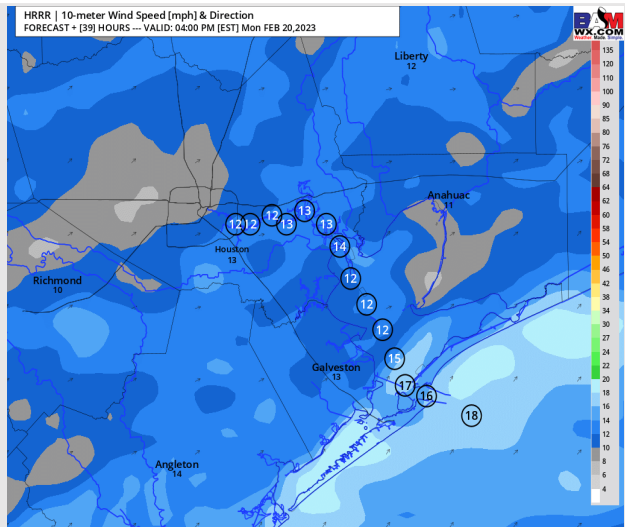
**Temps:** High temperatures will be in the near 80 F north of Morgan’s Point and in the mid to lower 70s F south of Morgan’s Point. Out towards the Boarding station and 11/12 will hold temps in the mid to upper 60s.

**Visibility:** A low end risk for fog will be possible during the late AM hours as low-level moisture will be available. More details to come in future updates.

## Precip Forecast: 1 PM CT



**Wind Speed  
3 PM CT**



**High Temps  
Monday**



# Houston Pilots: Tue. 2/21/2023



## Forecast Discussion

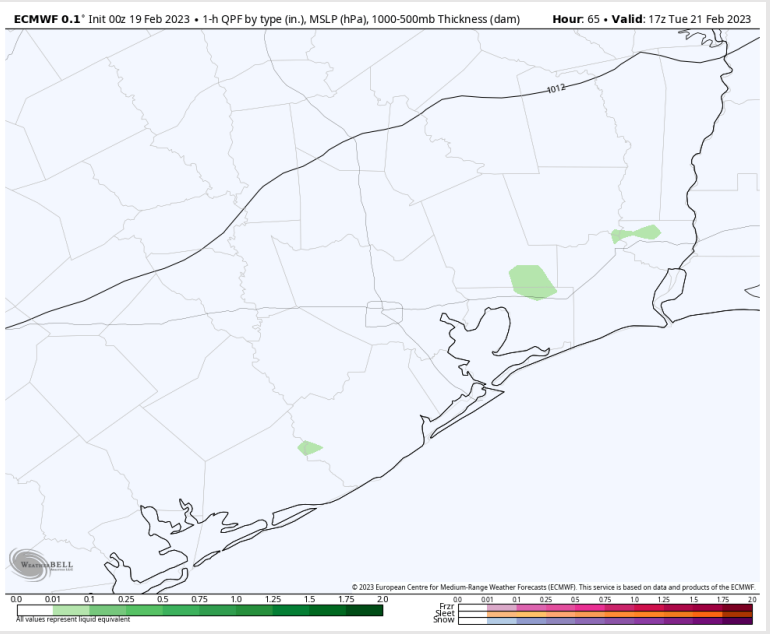
**Precip:** Anticipating dry conditions for Tuesday with a 20% chance for a passing shower between 11 AM – 2 PM.

**Wind:** Sustained winds will be from the SW on Tuesday, shifting more southerly by 4 PM. Winds across all stations will be around 10 – 16 kts. Towards 8 PM, winds will increase slightly at 11/12 and the Boarding Station at 15 – 20 kts.

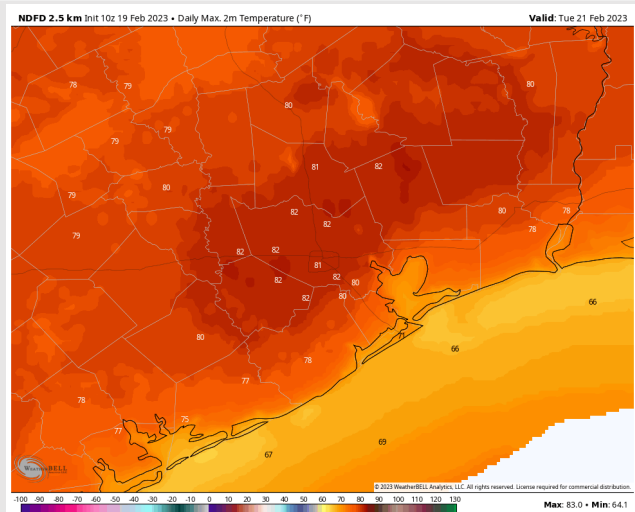
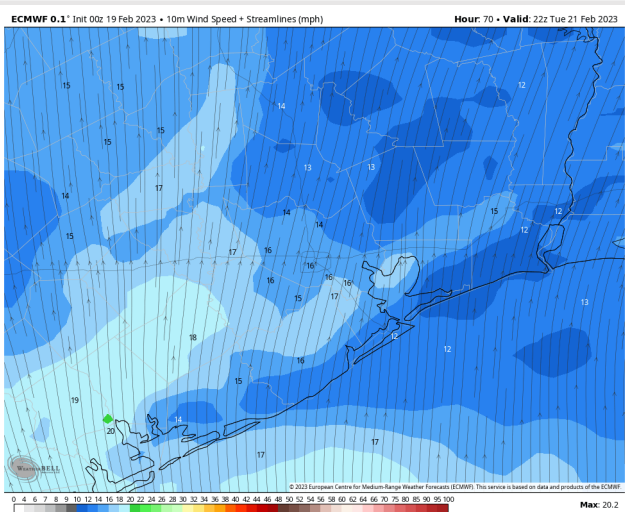
**Temps:** High temperatures will be in the low 80s F north of Morgan’s Point and in the mid to upper 70s F south of Morgan’s Point. Temps towards 11/12 and the Boarding Station will be in the mid to upper 60s F.

**Visibility:** Sea Fog threats are looking likely for Tuesday, especially during the early afternoon hours where it could be particularly dense. More updates will be added in the future as we are still a few days out.

## Precip Forecast: 11 AM CT

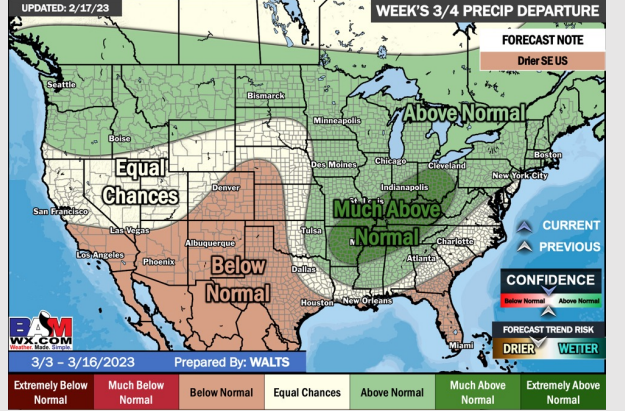
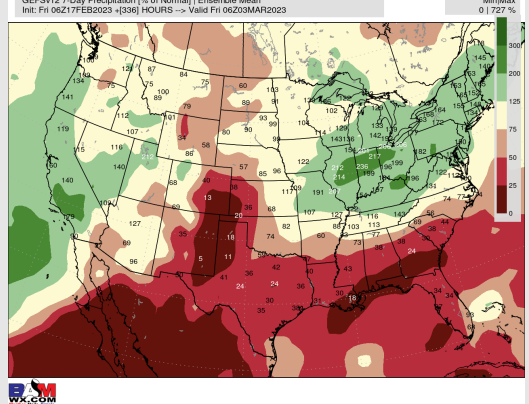
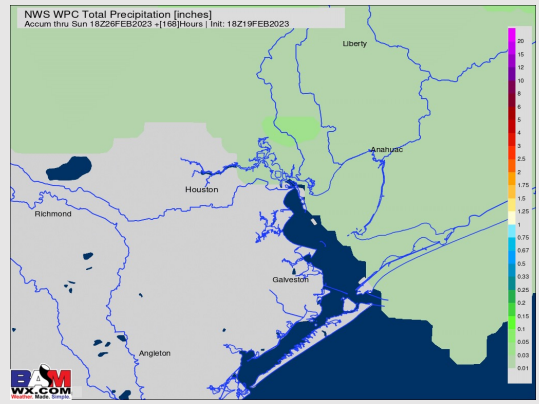
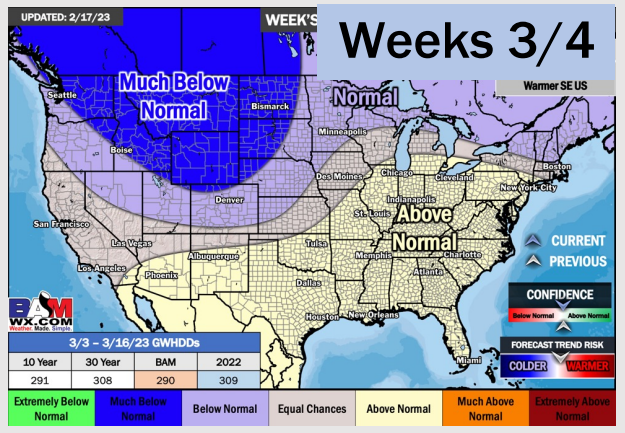
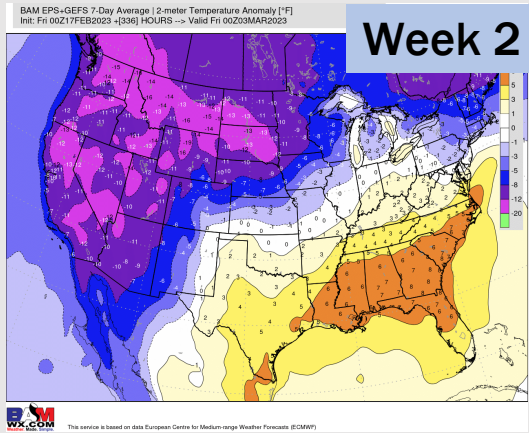
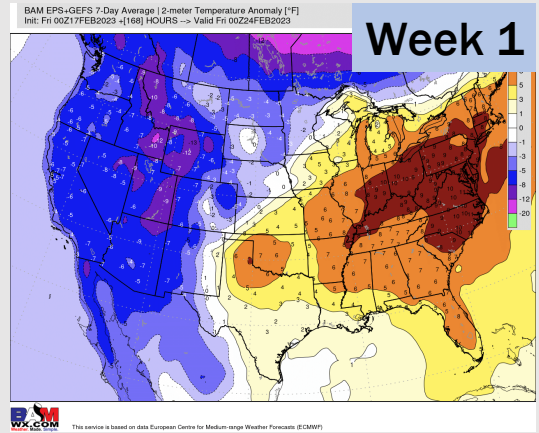


Wind Speed  
4 PM CT



High Temps  
Tuesday

# Houston Pilots: 2/19/23



- Rain chances expected Wednesday with temperatures slightly above normal for the 1 week timeframe.
- Expecting below normal precipitation chances and above normal temperatures for the week 2 timeframe.
- Below normal chances for precipitation and above normal temperatures favored in the week 3/4 timeframe.