

# Houston Pilots Forecast Package



Updated: 2:45 PM CT

Tuesday, February 14, 2023

Forecaster: Tyler Hollingsworth

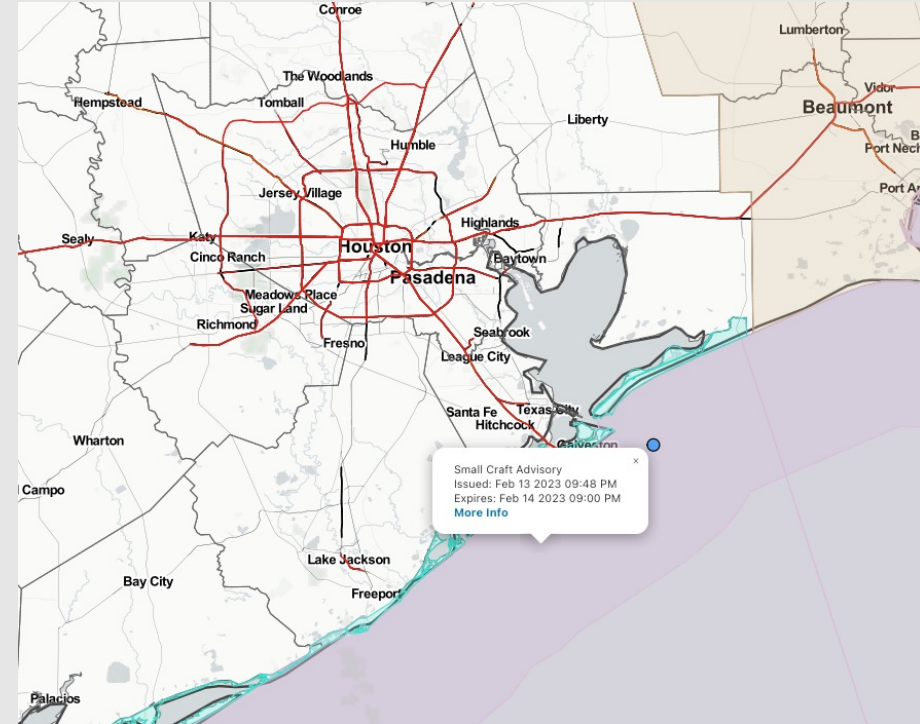
## Weather Headlines

➤ **Earlier fog development tonight. Eyeing early Wednesday AM through Thursday AM for sea fog risks to return to the picture. Check the fog slides below for more.**

➤ **Rain chances drying out tonight. Rain chances will stick around Wednesday and early Thu AM before drying out for the weekend**

➤ **Onshore winds will lead to wave heights of 6+ feet will be possible at the boarding station through sundown today.**

➤ **Check slides below for more details on daily breakdowns of winds as they will stay elevated. Winds behind the cold front Thursday will also lead to gusty winds (gusts 30+ knots in the PM)**



**Radar/NWS Alerts: 5:00 AM CT**



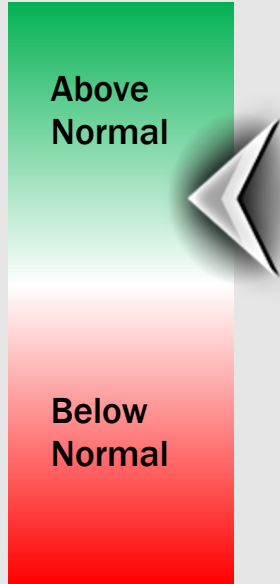
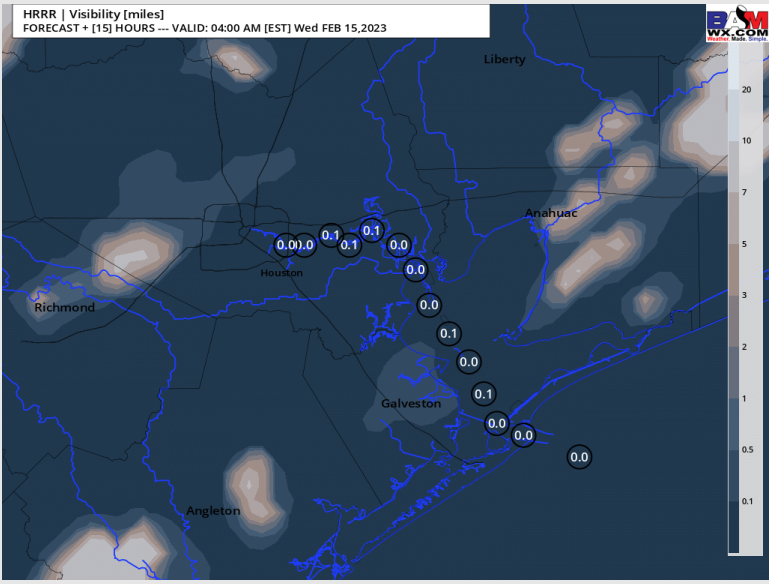
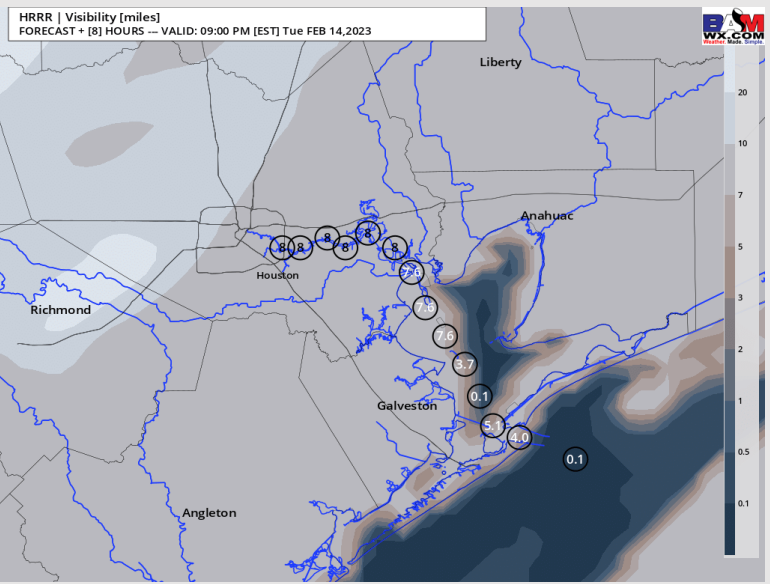
As always, please do not hesitate to reach out to us with any forecast questions via the chat option on the Weather Porthole or our on-call number, **(317)-560-8122** press 1 for forecast questions.

# Houston Pilots Visibility Report



## 8 PM CT TUE VISIBILITY      3 AM CT WED VISIBILITY

## Confidence



TIMEFRAME DISCUSSED	THREAT
7 PM TUE - 12 PM WED	Med - High

- The latest model data is keeping low level moisture in the area longer than anticipated, allowing for an earlier onset of fog development than thought this morning. Current thinking is that the development of fog can start in the 7 - 8 PM TUE window.
- Coverage will increase from the boarding station and progress further north through the evening and into Wednesday morning. As of now, currently targeting the 9-11 PM window for the best threat of the most widespread dense fog risk where all stations will be at play, and visibilities of less than 1-2 miles will be possible.
- Anticipating widespread coverage to maintain until around the 10 AM timeframe. After 10 AM and into the afternoon, expecting coverage to become patchy in nature.

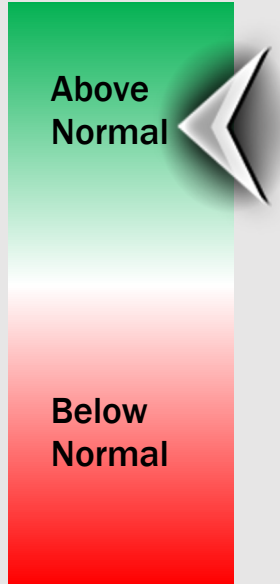
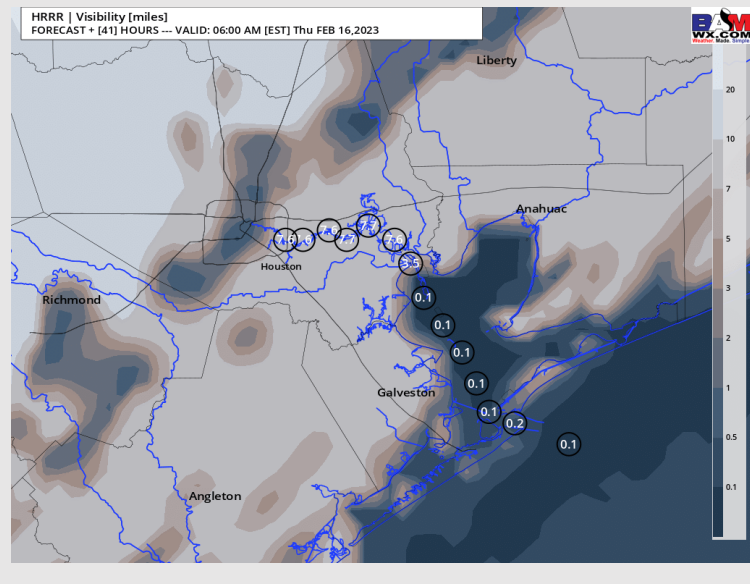
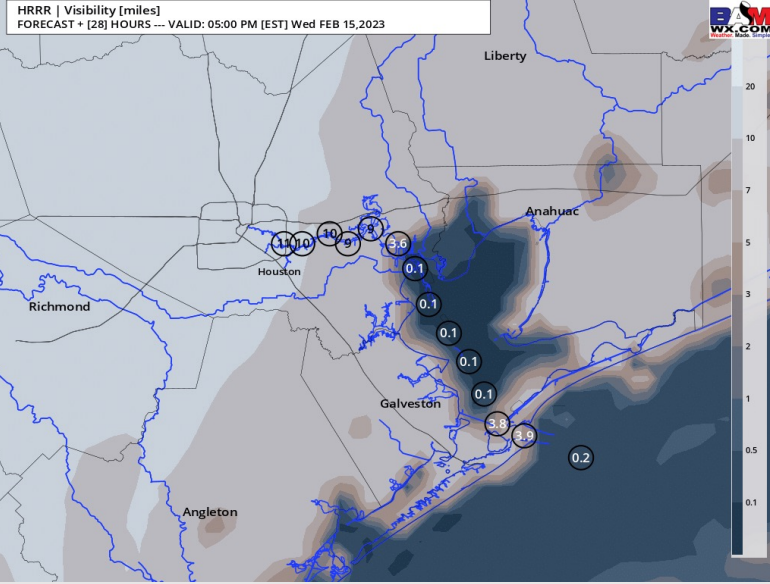
# Houston Pilots Visibility Report



## 4 PM WED VISIBILITY

## 5 AM THU VISIBILITY

## Confidence



TIMEFRAME DISCUSSED	THREAT
12 PM WED - 7 AM THU	Medium - High

- Expecting fog from Wednesday morning to continue to linger on into the afternoon – evening hours, however, more in a patchy nature rather than widespread.
- Confidence is higher than average that there will be fog overnight Wednesday into the pre-dawn hours Thursday. Dense fog of <1 mile visibility will be at play with this fog.
- A cold front will work through the region in the 5-8 AM hours Thursday and as it does so it will take precip with it and effectively wipe out any fog risks as winds turn from the NW.

# Houston Pilots Extended Range Visibility Report



## Friday 2/16/23

Elevated northerly winds expected all day Friday, making sea fog unlikely.



## Saturday 2/17/23

Winds shift from the NE to SE by late Saturday evening. Most likely not enough time for sea fog to develop.



## Sunday 2/18/23

S – SSE winds all day Sunday. Will need to monitor for sea fog potential, however right now we are not in favor of this.



## Chance for Reduced Visibility

Friday AM	Unlikely
Friday PM	Unlikely
Saturday AM	Unlikely
Saturday PM	Unlikely
Sunday AM	Possible
Sunday PM	Possible



# Houston Pilots Wind Report



**Example**

Sustained wind 13 Knots

Gusts 18 Knots

Wind from the N

WS: 13  
G:18  
N

Time Knots	Tue 1pm	Tue 2pm	Tue 3pm	Tue 4pm	Tue 5pm	Tue 6pm	Tue 7pm	Tue 8pm	Tue 9pm	Tue 10pm	Tue 11pm	Wed 12am	Wed 1am	Wed 2am	Wed 3am	Wed 4am	Wed 5am	Wed 6am	Wed 7am	Wed 8am	Wed 9am	Wed 10am	Wed 11am	Wed 12pm	Wed 1pm	Wed 2pm	Wed 3pm	Wed 4pm	Wed 5pm	Wed 6pm	Wed 7pm	Wed 8pm	Wed 9pm	Wed 10pm	Wed 11pm	Thu 12am
610 Bridge	13	11	9	8	5	3	3	4	4	4	3	3	4	5	5	4	4	4	4	5	6	7	9	11	12	13	14	14	15	14	13	12	13	14	14	14
	23	20	15	14	11	5	5	10	12	11	9	8	9	11	11	6	6	7	7	8	10	11	14	17	19	19	21	22	23	21	19	18	20	21	21	21
Kinder 1	13	10	9	7	4	3	3	4	4	4	4	3	4	5	5	4	4	4	4	5	6	7	9	11	12	13	14	14	15	14	12	12	13	14	14	14
	23	20	15	13	10	5	6	11	12	11	9	8	9	11	11	6	6	7	7	8	10	11	14	17	19	19	20	21	22	21	19	18	20	21	21	21
Greens Bayou	13	10	9	6	3	3	3	4	4	4	4	3	4	4	5	4	4	4	4	5	6	7	9	11	12	13	13	14	14	13	12	11	13	14	13	14
	25	20	15	12	10	5	7	12	12	11	10	8	10	10	11	6	6	7	7	7	9	11	14	16	18	19	20	21	22	20	19	17	19	21	20	21
Shell Crude	14	10	9	6	3	3	3	4	4	4	4	4	4	5	5	4	4	4	4	5	6	7	9	10	12	13	13	14	14	12	12	11	13	13	13	13
	26	21	15	12	9	6	8	12	12	11	10	9	10	9	11	6	6	7	7	8	10	11	13	16	18	19	20	21	21	19	18	17	19	20	19	20
Lynchburg Ferries	14	10	9	6	3	3	4	4	4	4	4	4	4	5	4	4	5	5	5	6	7	9	10	11	12	14	14	14	14	12	12	11	12	12	12	12
	28	22	15	12	9	6	7	12	11	11	9	9	10	8	10	6	6	7	7	8	10	11	13	15	17	19	20	21	20	18	17	18	19	18	18	18
Exxon 3	13	11	9	6	3	4	4	5	5	5	4	3	4	5	5	5	5	5	6	7	8	9	10	11	13	13	14	14	13	12	12	11	12	12	11	12
	29	24	16	12	9	6	10	12	11	10	9	8	9	9	10	6	6	7	7	8	10	11	13	15	17	19	20	20	19	18	17	16	17	17	17	17
Morgans Point	13	11	10	6	3	5	7	7	7	6	5	3	4	5	5	6	6	6	7	8	9	10	11	12	13	14	14	14	14	13	13	13	12	12	12	12
	30	25	17	12	9	7	12	12	12	11	9	7	8	9	10	6	7	7	8	9	10	11	13	15	17	19	20	20	19	18	17	16	16	16	15	16
75/76	13	14	11	6	4	8	10	9	9	9	7	5	6	6	7	6	6	7	7	8	9	9	10	12	13	14	14	15	15	15	14	14	13	14	13	13
	30	26	19	12	8	10	14	13	13	13	10	8	9	10	12	7	7	8	8	10	10	12	13	16	17	19	20	19	18	17	16	16	16	15	15	15
63/64	15	15	11	8	7	10	10	9	9	9	8	7	7	8	9	6	6	7	7	9	9	10	11	12	13	14	14	14	15	15	14	14	14	14	14	13
	30	28	21	13	10	13	14	13	13	13	11	9	10	11	13	7	7	8	8	10	10	12	14	15	17	19	19	19	18	17	16	16	15	15	16	15
51/52	16	15	12	10	11	11	10	10	9	10	8	8	8	8	9	6	6	7	7	9	9	10	11	12	13	14	14	14	15	15	14	14	14	14	14	13
	30	28	23	16	15	15	15	14	13	13	11	11	10	12	13	7	7	8	8	10	10	12	13	15	17	18	18	18	17	16	15	15	15	15	14	14
37/38	16	15	15	12	12	11	10	10	9	10	8	8	7	8	8	5	5	6	7	8	8	10	11	12	13	13	14	14	14	14	14	14	13	13	13	13
	30	29	27	21	18	16	15	14	14	13	11	10	12	13	6	6	7	8	9	10	12	13	15	16	17	18	17	17	16	17	15	15	16	15	14	14
25/26	15	16	17	14	12	10	8	8	9	8	7	6	6	7	6	5	5	6	6	7	8	8	10	11	12	12	13	13	13	13	13	13	12	12	12	12
	28	31	30	24	19	16	14	13	14	13	10	10	10	11	12	7	7	7	8	9	10	12	13	14	15	17	17	17	17	17	15	16	16	16	15	14
11/12	14	14	16	13	11	10	8	7	8	7	5	5	5	5	4	5	5	6	7	8	9	10	11	12	12	12	13	13	13	13	13	12	13	12	12	12
	24	27	27	23	18	16	14	13	14	13	11	11	11	12	11	7	7	8	8	9	10	12	13	14	15	16	17	16	16	17	17	16	16	17	15	14
1 & 2 Bravo	12	13	13	11	10	10	10	10	8	7	7	6	5	6	5	6	7	7	8	9	10	11	12	12	12	13	13	14	15	15	16	15	15	15	14	14
	20	22	22	20	19	17	16	17	16	15	15	14	13	14	11	7	8	8	9	10	11	13	14	14	14	17	16	16	18	18	17	18	17	18	17	16

## Forecast Discussion

**Precip:** Some lingering showers until 4 PM this afternoon. Anticipating dry conditions for the rest of the day.

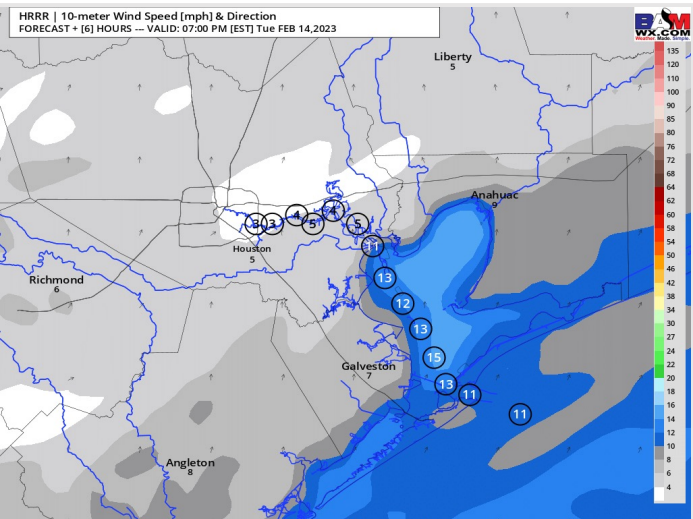
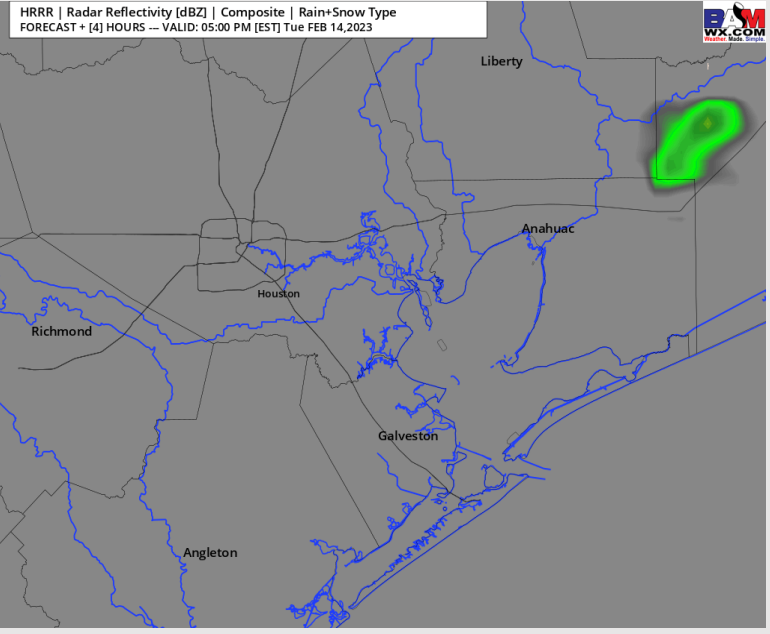
**Wind:** Sustained winds from the SW for the rest of the day. Elevated winds of 11 – 16 kts for stations north of Morgan’s Point and 15-20 kts for stations south of Morgan’s Point will continue until 4 PM. Winds will then gradually decrease to 5-10 kts for stations north of Morgan’s Point and 8 – 14 kts for stations south of Morgan’s Point and stay that way for the rest of the evening.

**Wind gusts of 30 kts will be possible for all stations until 3 PM, before gusts fall to 15-20 knots at the boarding station.**

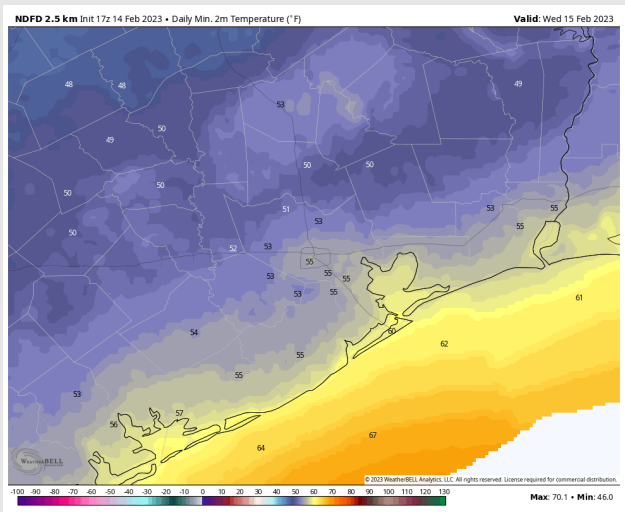
**Temps:** Low temperatures Wednesday AM will be in the near 60s F near the Boarding Station and upper to mid 50s F across all other stations.

**Visibility:** Check slides above for more on earlier development this evening into Wednesday AM.

## Precip Forecast: 4 PM CT



Wind Speed  
6 PM CT



Low Temps  
Wed AM

# Houston Pilots: Wed. 2/15/2023



## Forecast Discussion

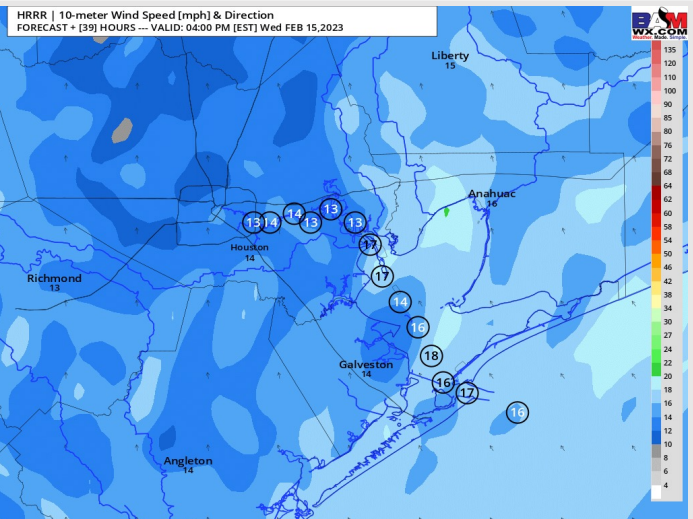
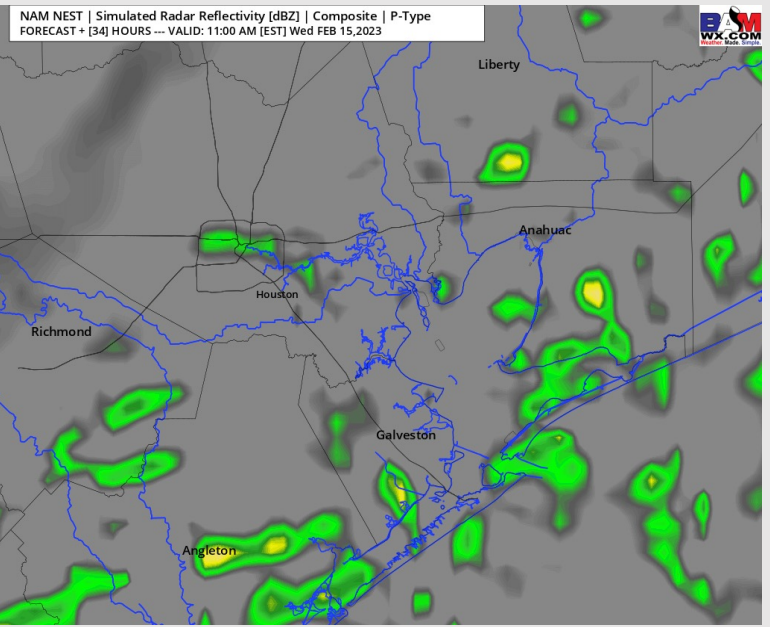
**Precip:** Isolated showers possible in the area between 10 AM – 9 PM. Coverage will be on the order of ~30% and intensity rather light. This is certainly not a washout of a day.

**Wind:** Winds shift from the SW to SSE by 6 AM and remain that way for the rest of the day. Winds will be at 5-10 kts across all stations until 9 AM. After 9 AM winds will pick back up to 10-15 kts for stations north of Morgan's Point and 13-18 kts for stations south of Morgan's Point and will stay that way for the rest of the day. **Occasional gusts to 18-23 knots at the boarding station will be possible anytime after 1 PM.**

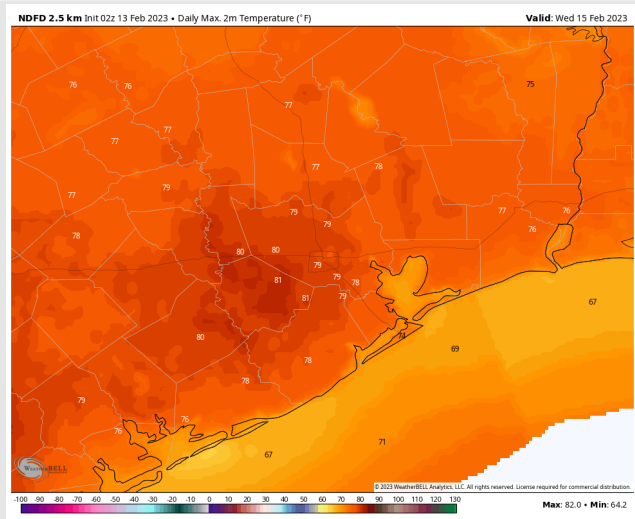
**Temps:** High temperatures Wednesday in the near 70s F across all stations.

**Visibility:** Please check detailed fog slides above for fog risks Wednesday. There is likely a break into the PM hours before another risk heading Wednesday night – early Thursday AM.

## Precip Forecast: 10 AM CT



Wind Speed  
3 PM CT



High Temps  
Wednesday



# Houston Pilots: Thu. 2/16/2023



## Forecast Discussion

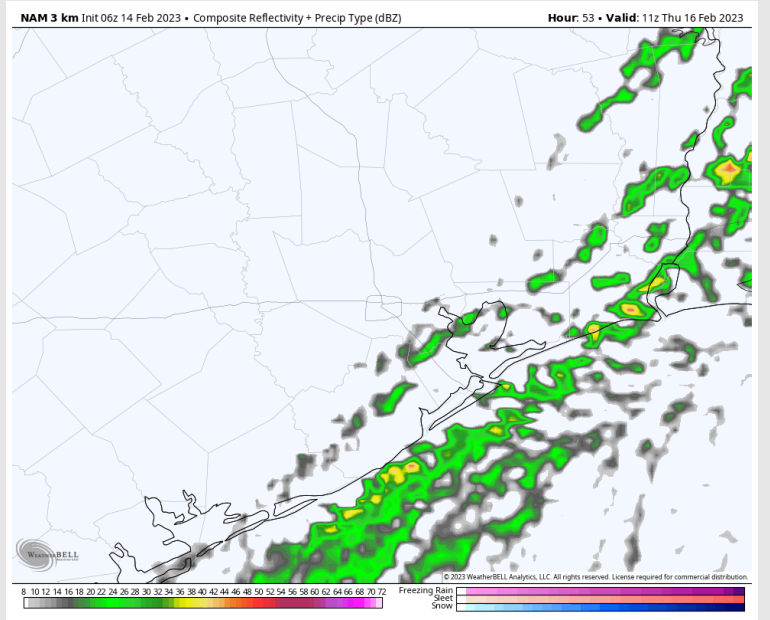
**Precip:** A line of showers and a few thunderstorms will be possible Thursday AM from 5 – 8 AM with the cold front. Dry conditions filter in behind the front.

**Wind:** Prior to 6 AM, winds for stations north of Morgan’s Point at 5 – 10 kts and 10 – 15 kts for stations south of Morgan’s Point coming from the SW. After 9 AM, winds increase to 13 – 17 kts for stations north of Morgan’s Point, and 18-23 knots South of Morgan’s Point. **Wind gusts of 30 + kts possible around the Boarding Station most of the day.**

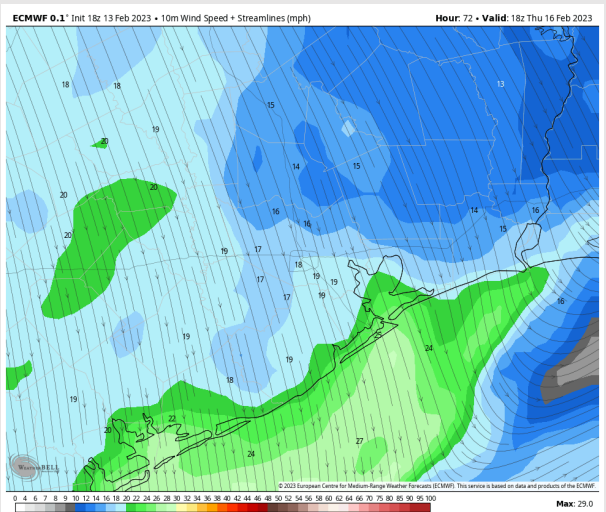
**Temps:** High temperatures Thursday will be near 60 F across all stations. This happens early in the day.

**Visibility:** Fog will be possible before the passing of the cold front. More details on early AM threat on fog slides above.

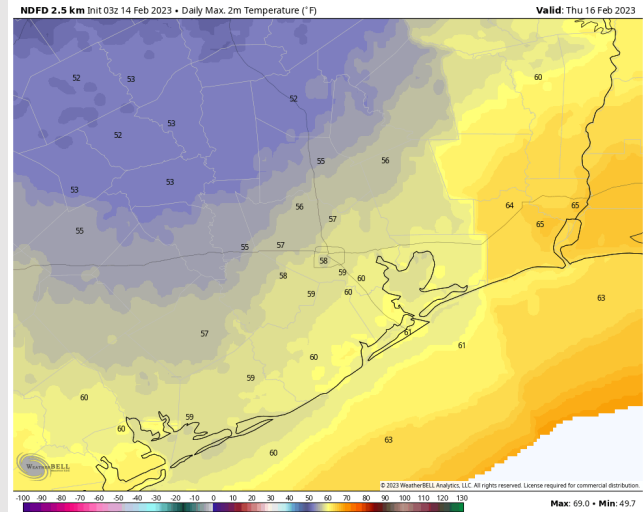
## Precip Forecast: 6 AM CT



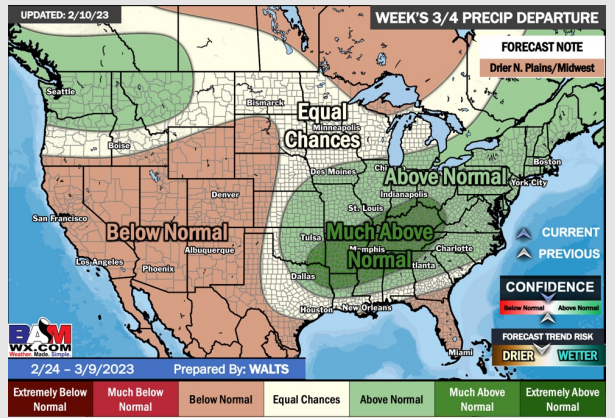
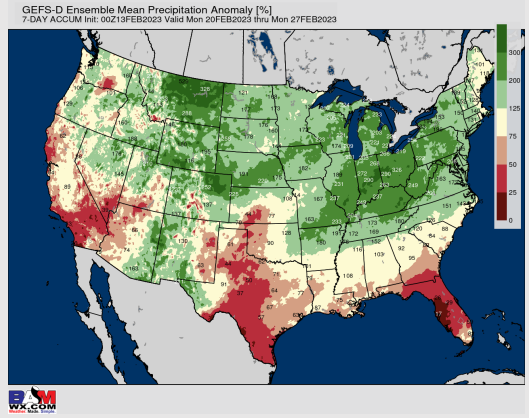
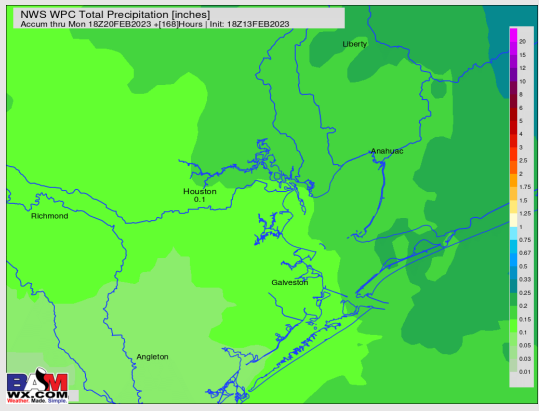
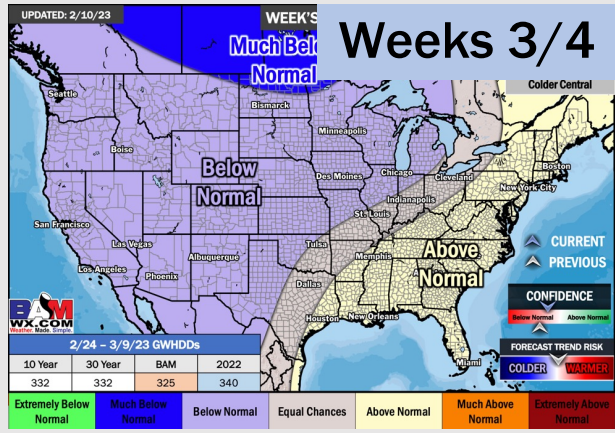
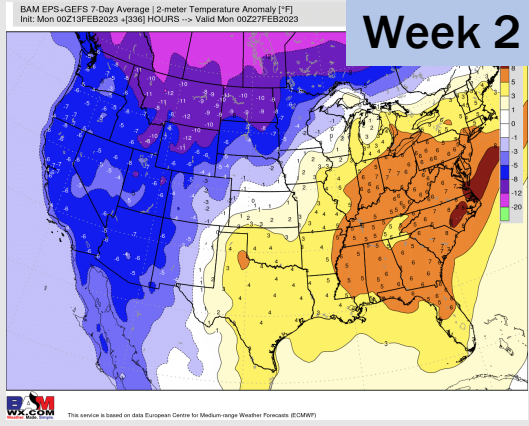
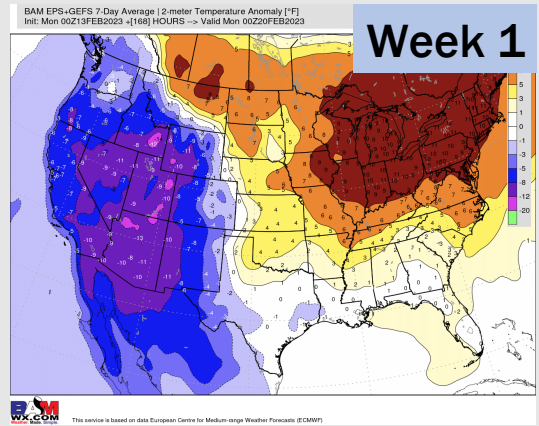
Wind Speed  
12 PM CT



High Temps  
Thursday



# Houston Pilots: 2/14/23



- Tuesday through Thursday expected to be active in precipitation, before another dry stretch beyond that. Temps expected to be near to below normal.
- Expecting near to below normal precipitation chances and above normal temperatures for the week 2 timeframe.
- Equal chances for precipitation and above normal temperatures favored in the week 3/4 timeframe.