

Houston Pilots Forecast Package



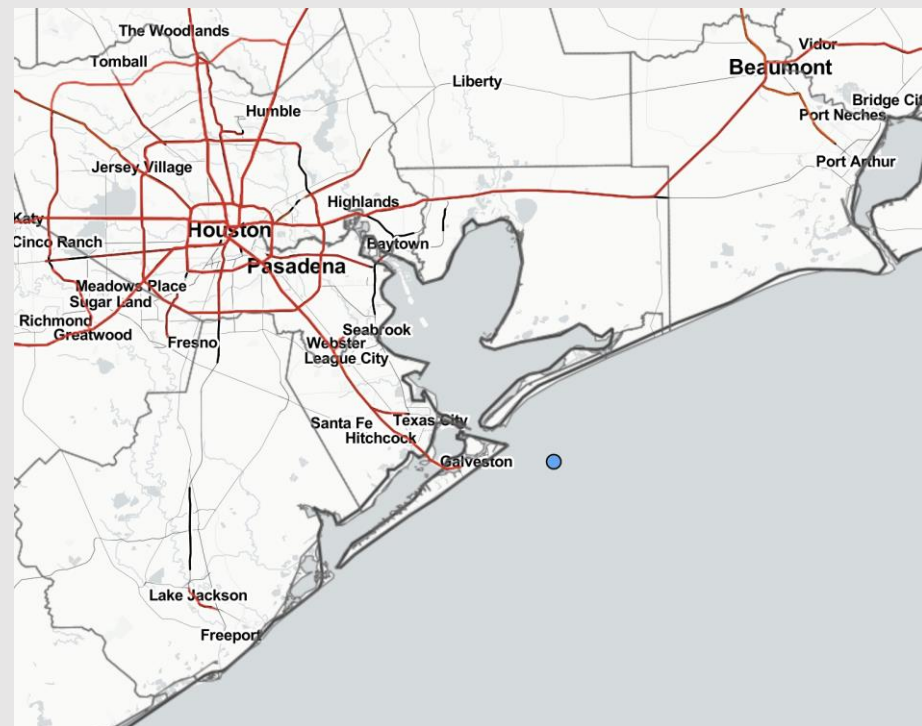
Updated: 6:00 AM CT

Sunday, February 12, 2023

Forecaster: Jonathan Kipper

Weather Headlines

- Calmer winds expected throughout the day today, with winds picking back up Monday afternoon.
- Anticipating dry conditions out through Monday, with next chance of rain being Tuesday mid-morning.
- Although a chance for patchy fog Monday AM, sea fog does not look to be a widespread threat over the next few days. The next timeframe to look out for in terms of sea fog potential will be Wednesday.



Radar/NWS Alerts: 6:00 AM CT



As always, please do not hesitate to reach out to us with any forecast questions via the chat option on the Weather Porthole or our on-call number, **(317)-560-8122** press 1 for forecast questions.

Houston Pilots Extended Range Visibility Report



Wednesday 2/15/23

Winds look to be from the SSW during the morning hours of Wednesday, shifting to from the SE by the late morning. Favoring sea fog to be possible Wednesday.



Friday 2/17/23

Elevated northerly winds expected all day Friday, making sea fog unlikely.



Thursday 2/16/23

A cold front is expected to move through the area during the early AM hours, shifting to NW winds and making sea fog unlikely.



Chance for Reduced Visibility

Wednesday AM	Possible
Wednesday PM	Possible
Thursday AM	Unlikely
Thursday PM	Unlikely
Friday AM	Unlikely
Friday PM	Unlikely

Houston Pilots Visibility Report



Time	Sun 5am	Sun 6am	Sun 7am	Sun 8am	Sun 9am	Sun 10am	Sun 11am	Sun 12pm	Sun 1pm	Sun 2pm	Sun 3pm	Sun 4pm	Sun 5pm	Sun 6pm	Sun 7pm	Sun 8pm	Sun 9pm	Sun 10pm	Sun 11pm	Mon 12am	Mon 1am	Mon 2am	Mon 3am	Mon 4am	Mon 5am	Mon 6am	Mon 7am	Mon 8am	Mon 9am	Mon 10am	Mon 11am	Mon 12pm	Mon 1pm	Mon 2pm	Mon 3pm	Mon 4pm
610 Bridge	10	9	8	8	10	10	10	10	10	10	10	10	10	10	10	10	10	10	10	10	10	10	10	10	10	10	9	6	10	10	10	10	10	10	10	10
Kinder 1	10	9	8	8	10	10	10	10	10	10	10	10	10	10	10	10	10	10	10	10	10	10	10	10	10	10	9	6	10	10	10	10	10	10	10	10
Greens Bayou	10	9	8	8	10	10	10	10	10	10	10	10	10	10	10	10	10	10	10	10	10	10	10	10	10	10	9	6	10	10	10	10	10	10	10	10
Shell Crude	10	9	9	9	10	10	10	10	10	10	10	10	10	10	10	10	10	10	10	10	10	10	10	10	10	10	9	6	10	10	10	10	10	10	10	10
Lynchburg Ferries	10	10	9	9	10	10	10	10	10	10	10	10	10	10	10	10	10	10	10	10	10	10	10	10	10	10	9	6	10	10	10	10	10	10	10	10
Exxon 3	10	10	10	10	10	10	10	10	10	10	10	10	10	10	10	10	10	10	10	10	10	10	10	10	10	10	9	6	10	10	10	10	10	10	10	10
Morgans Point	10	10	10	10	10	10	10	10	10	10	10	10	10	10	10	10	10	10	10	10	10	10	10	10	10	10	9	6	10	10	10	10	10	10	10	10
75/76	10	10	10	10	10	10	10	10	10	10	10	10	10	10	10	10	10	10	10	10	10	10	10	10	10	10	9	6	10	10	10	10	10	10	10	10
63/64	10	10	10	10	10	10	10	10	10	10	10	10	10	10	10	10	10	10	10	10	10	10	10	10	10	10	9	6	10	10	10	10	10	10	10	10
51/52	10	10	10	10	10	10	10	10	10	10	10	10	10	10	10	10	10	10	10	10	10	10	10	10	10	10	9	6	10	10	10	10	10	10	10	10
37/38	10	10	10	10	10	10	10	10	10	10	10	10	10	10	10	10	10	10	10	10	10	10	10	10	10	10	8	8	10	10	10	10	10	10	10	10
25/26	10	10	10	10	10	10	10	10	10	10	10	10	10	10	10	10	10	10	10	10	10	10	10	10	10	10	10	9	10	10	10	10	10	10	10	10
11/12	10	10	10	10	10	10	10	10	10	10	10	10	10	10	10	10	10	10	10	10	10	10	10	10	10	10	10	10	10	10	10	10	10	10	10	10
1 & 2 Bravo	10	10	10	10	10	10	10	10	10	10	10	10	10	10	10	10	10	10	10	10	10	10	10	10	10	10	10	10	10	10	9	10	10	10	10	10

Houston Pilots Wind Report



Time Knots	Sun 5am	Sun 6am	Sun 7am	Sun 8am	Sun 9am	Sun 10am	Sun 11am	Sun 12pm	Sun 1pm	Sun 2pm	Sun 3pm	Sun 4pm	Sun 5pm	Sun 6pm	Sun 7pm	Sun 8pm	Sun 9pm	Sun 10pm	Sun 11pm	Mon 12am	Mon 1am	Mon 2am	Mon 3am	Mon 4am	Mon 5am	Mon 6am	Mon 7am	Mon 8am	Mon 9am	Mon 10am	Mon 11am	Mon 12pm	Mon 1pm	Mon 2pm	Mon 3pm	Mon 4pm
610 Bridge	1	2	3	1	2	2	2	1	2	3	3	3	3	4	4	5	5	5	4	4	3	3	3	2	2	2	2	2	3	3	5	5	6	8	9	10
	2	4	4	5	5	3	3	3	4	5	5	4	5	6	10	7	8	7	6	6	5	5	4	3	2	3	2	2	4	5	7	8	9	10	11	12
Kinder 1	NW	WNW	WNW	WNW	NW	NNE	NE	SE	WNW	WNW	WNW	WNW	W	ESE	SE	SE	SE	SE	SSW	SE	SE	SE	SE	SSE	ESE	E	E	ESE	SSE	SE	SE	SSE	SE	SE	SE	SE
	2	3	3	1	2	2	1	2	3	3	2	3	2	3	5	4	5	5	4	4	3	3	3	2	2	2	2	3	3	5	5	7	8	9	10	11
Greens Bayou	3	4	4	5	5	3	3	3	4	5	4	4	5	7	11	7	8	7	6	6	5	4	4	3	3	2	2	2	4	5	7	8	9	10	11	12
	WNW	WNW	WNW	WNW	NW	NNE	NE	SE	WNW	WNW	WNW	WNW	SW	ESE	SE	SE	SE	SE	SSW	SE	SE	SE	SE	SSE	ESE	E	E	ESE	SSE	SE	SE	SSE	SE	SE	SE	SE
Shell Crude	3	4	4	5	4	3	3	3	3	5	5	5	5	9	11	7	8	7	6	6	5	4	4	3	3	2	2	3	4	5	7	7	9	10	11	12
	WNW	WNW	WNW	WNW	NNW	ENE	NNE	ESE	WSW	W	WSW	SSW	SE	SE	SE	SE	SE	SSW	SE	SSW	SE	SSW	SSW	SE	SSE	ESE	E	E	ESE	SSE	SSE	SE	SE	SE	SE	SE
Lynchburg Ferries	4	5	4	4	4	3	3	3	3	5	5	5	6	10	11	8	8	7	6	6	5	4	4	3	3	3	3	3	4	5	7	8	9	10	11	12
	WNW	WNW	WNW	WNW	NNW	ENE	NNE	ESE	WSW	W	WSW	SSW	SE	SE	SE	SE	SE	SSW	SE	SSW	SE	SSW	SSW	SE	SSE	ESE	E	E	ESE	SSE	SSE	SE	SE	SE	SE	SE
Exxon 3	5	5	4	4	4	3	3	2	3	5	5	5	7	11	11	8	8	7	7	6	6	5	4	3	3	3	3	3	4	5	7	8	9	11	11	13
	WNW	WNW	NW	WNW	NW	SSW	NNE	ENE	SW	WSW	SW	SE	SE	SE	SE	SE	SE	SSW	SSW	SSW	SSW	SSW	SSW	SE	SSE	ESE	E	E	ESE	SSE	SSE	SE	SE	SE	SE	SE
Morgans Point	6	6	5	4	5	3	3	1	4	5	6	6	7	11	11	8	8	7	7	6	6	5	4	3	3	3	3	3	4	6	7	8	9	11	12	13
	WNW	WNW	NW	WNW	NW	NNE	E	SSW	SSW	SSE	SE	SE	SE	SE	SE	SE	SE	SSW	SSW	SSW	SSW	SSW	SSW	SSW	SSE	ESE	E	ENE	ESE	SE	SSE	SSE	SE	SE	SE	SE
75/76	7	7	6	5	5	4	3	1	4	6	6	6	8	12	10	9	8	7	6	6	4	3	3	3	3	3	3	4	4	6	8	9	9	11	12	13
	WNW	NW	NW	NW	NNW	NE	SE	SE	SE	SE	SE	SE	SE	SE	SE	SE	SE	SSW	SSW	SSW	SSW	SSW	SSW	SSW	SSE	E	ENE	ENE	E	SE	SE	SE	SE	SE	SE	SE
63/64	6	6	6	5	5	4	2	3	5	6	7	10	12	10	10	10	9	8	7	6	5	4	3	2	2	2	3	5	5	6	8	9	10	12	13	14
	WNW	NW	NW	NW	NNW	ESE	SSE	SSE	SE	SE	SE	SE	SE	SE	SE	SE	SSW	SSW	SSW	SSW	SSW	SSW	SSW	SSW	SSW	SSW	E	ENE	ENE	E	ESE	ESE	SE	SE	SE	SE
51/52	7	7	7	6	6	5	4	2	2	4	6	8	11	11	10	9	9	8	7	6	5	4	2	2	2	2	3	5	5	6	8	9	10	12	13	13
	WNW	NW	NNW	NW	NW	SSW	SSE	SSE	SE	ESE	SE	SE	SE	SE	SE	SE	SSW	SSW	SSW	SSW	SSW	SSW	SSW	SSW	SSE	E	E	E	E	ESE	ESE	ESE	ESE	SE	SE	SE
37/38	7	7	8	7	6	5	3	2	3	5	8	10	10	10	10	9	8	8	6	6	5	3	3	2	2	2	3	5	5	6	7	9	10	11	13	13
	WNW	NW	NNW	NNW	NW	NNW	W	SW	SW	SSE	SE	SE	SE	SSE	SSE	SE	SE	SSW	SSW	SSW	SSW	SSW	SSW	SSW	SSE	E	E	E	E	ESE	ESE	SE	SE	SE	SE	SE
25/26	7	7	8	7	7	6	5	3	2	4	4	8	9	9	9	8	7	7	6	6	5	4	3	2	2	2	3	5	5	6	7	9	9	11	12	12
	WNW	NW	NNW	NNW	NNW	SSE	WSW	WSW	SSW	SE	SSE	SSE	SE	SE	SE	SE	SSW	SSW	SSW	SSW	SSW	SSW	SSW	SSW	SSE	ESE	E	E	E	ESE	ESE	SE	SE	SE	SE	SE
11/12	6	6	7	6	6	6	5	2	1	SSW	SE	SSE	SSE	SE	SE	SE	SE	SSW	SSW	SSW	SSW	SSW	SSW	SSW	SSE	ESE	ESE	E	ESE	ESE	SE	SE	SE	SE	SE	SE
	7	8	8	8	7	6	5	3	2	3	4	7	8	8	8	7	7	7	7	7	6	5	4	4	3	4	4	5	5	6	7	8	9	10	11	11
1 & 2 Bravo	NW	NW	NNW	NNW	NNW	N	E	SE	SSW	SW	SSE	SE	SE	SE	SE	SE	SE	SSW	SSW	SSW	SSW	SSW	SSW	SSW	SSW	SSW	ESE	ESE	ESE	SE	SE	SE	SE	SE	SE	SE
	9	9	9	8	7	6	5	2	0	3	5	6	7	7	8	8	8	8	8	7	6	6	5	5	5	5	6	6	7	8	9	9	11	11	11	11
1 & 2 Bravo	NW	NNW	N	NNW	NNW	SW	NNE	NNE	E	SW	SSW	S	S	S	S	S	SSW	SSW	SSW	SSW	SSW	SSW	SSW	SSW	SSE	SSE	SE	ESE	ESE	ESE	ESE	ESE	ESE	ESE	ESE	ESE

Houston Pilots: Sun. 2/12/2023

Forecast Discussion

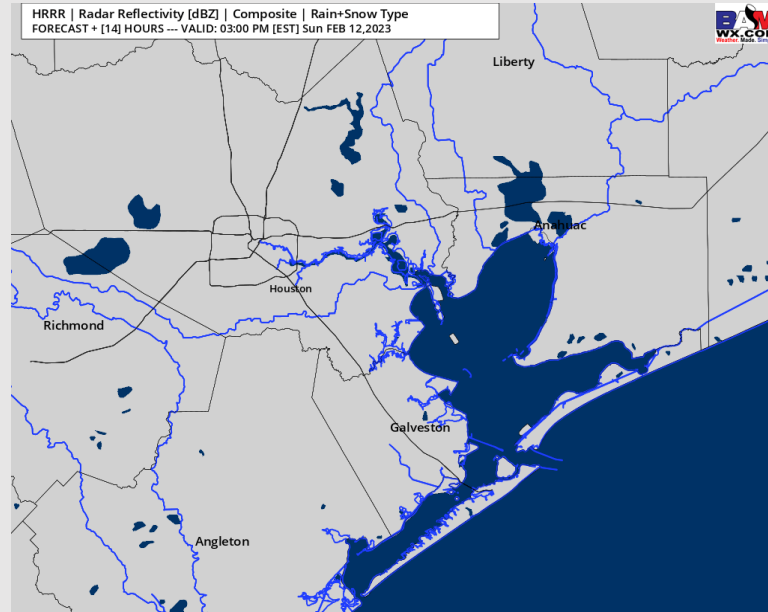
Precip: Anticipating dry conditions throughout the day today.

Wind: Sustained winds out of the NNW throughout the morning today. Then winds shift to out of the SSW by the early afternoon hours and remain that way for the rest of the day. Winds in the morning at 4-10 kts across all stations until 9 AM. After 9 AM, winds die down to 3-7 kts across all stations until 6 PM, after 6 PM winds will pick back up to 4-10 kts across all stations for the rest of the day.

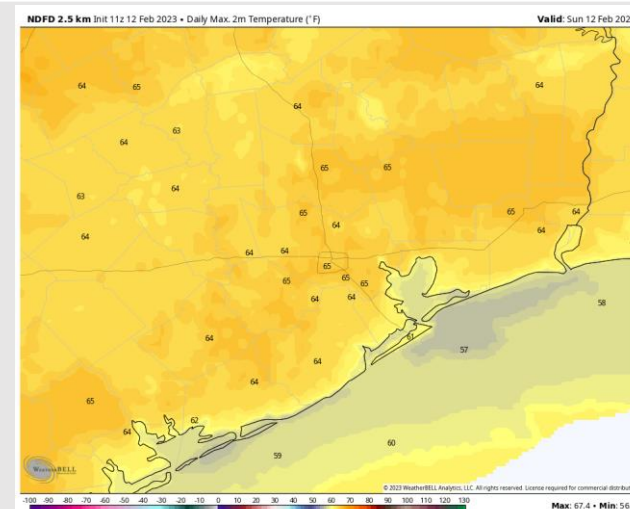
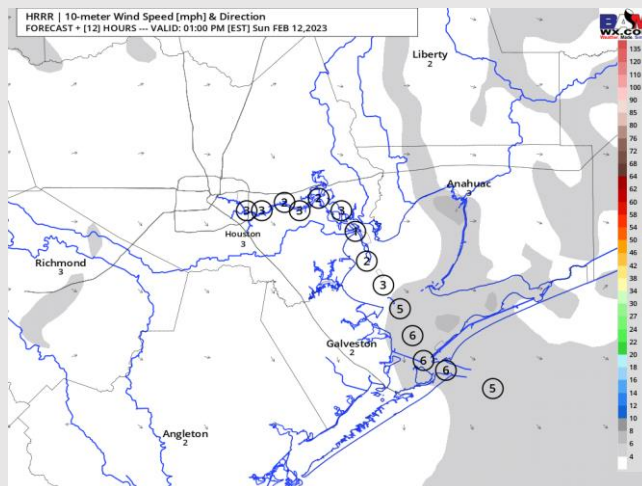
Temps: High temperatures today in the mid to upper 50s near the boarding station and mid 60s F across all other stations.

Visibility: Not anticipating any visibility concerns at this time.

Precip Forecast: 2 PM CT



Wind Speed
12 PM CT



High Temps
Today

Houston Pilots: Mon. 2/13/2023

Forecast Discussion

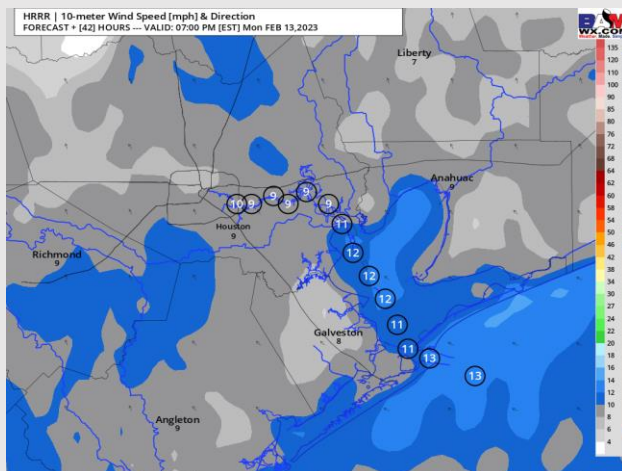
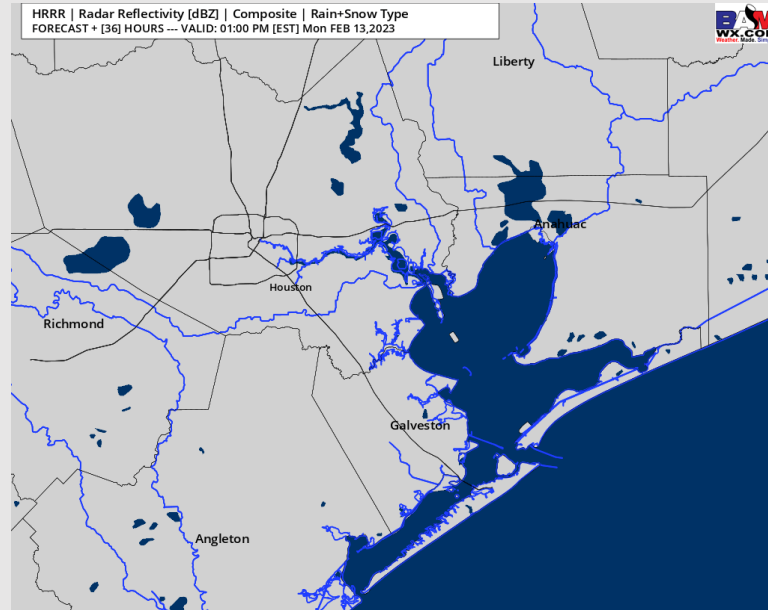
Precip: Anticipating a dry day for Monday.

Wind: Sustained winds will shift from the SSW to the SE by 10 AM and remain that way through the rest of the day. Winds for all stations will be at 3 - 8 kts until 3 PM. After 2 PM and through the rest of the night, winds gradually increase to 8 - 12 kts for stations north of Morgan's Point and 13 - 18 kts for stations south of Morgan's Point.

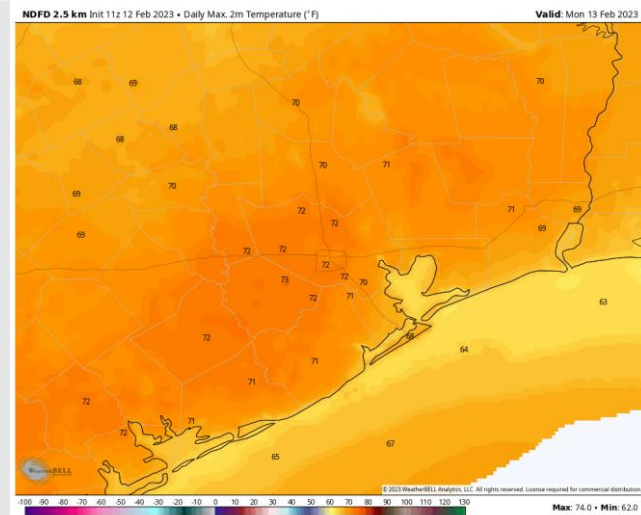
Temps: High temperatures Monday will be in the upper 60s F to low 70s F across all stations.

Visibility: Some patchy fog is possible during the AM hours on Monday, with 6 - 8 AM being the timeframe for greatest chance. This will not be a widespread event, with better chances closer inland. Expecting any fog risks to move out of the area by 10 AM.

Precip Forecast: 12 PM CT



Wind Speed
6 PM CT



High Temps
Monday

Houston Pilots: Tues. 2/14/2023

Forecast Discussion

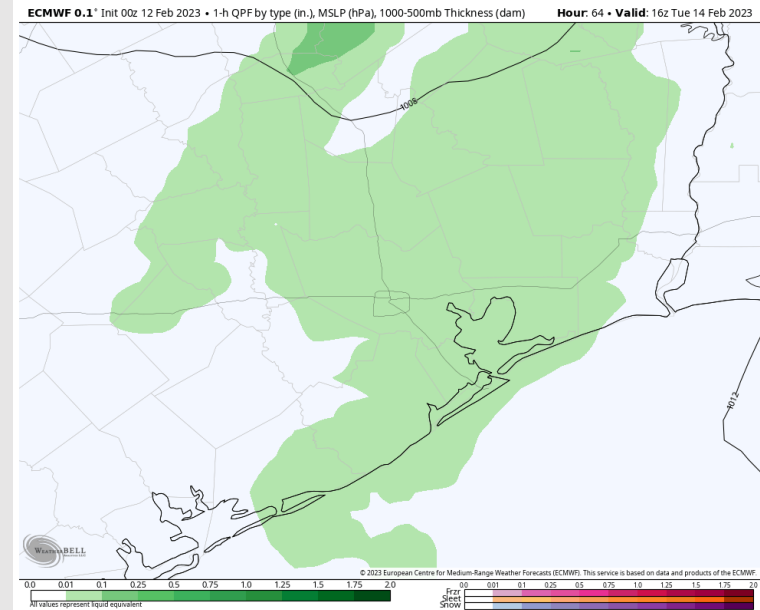
Precip: Some scattered showers will be around the area in the early AM hours (~30%) with better chances of showers/thunderstorms from 9 AM – 3 PM (70%).

Wind: Sustained winds gradually shift from SE to SW and stay that way after 10 AM. Elevated winds of 11 – 16 kts for stations north of Morgan's Point and 16 – 22 kts for stations south of Morgan's Point will continue through Tuesday AM until 2 PM. Winds will then gradually decrease to 4 – 8 kts for stations north of Morgan's Point and 8 – 14 kts for stations south of Morgan's Point by 5 PM and stay that way for the rest of the evening. Wind gusts of 25 – 30 kts will be possible for all stations until 3 PM.

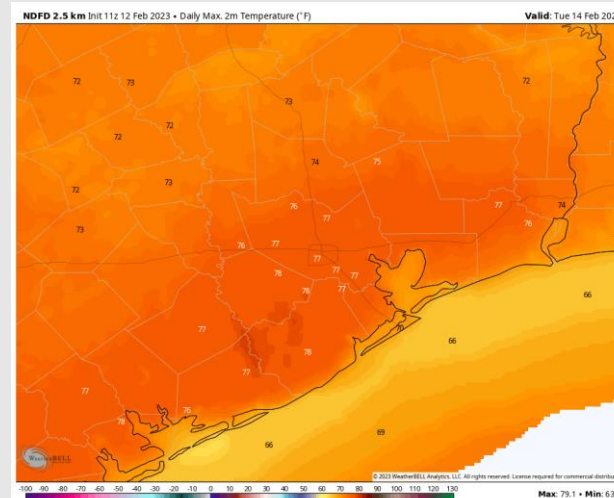
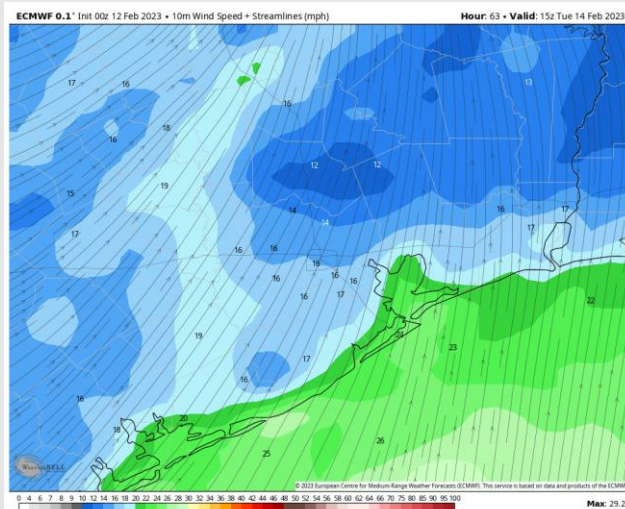
Temps: High temperatures Tuesday will be in the mid to upper 60s F near the Boarding Station and upper to mid 70s F across all other stations.

Visibility: Not anticipating any visibility concerns at this time.

Precip Forecast: 10 AM CT

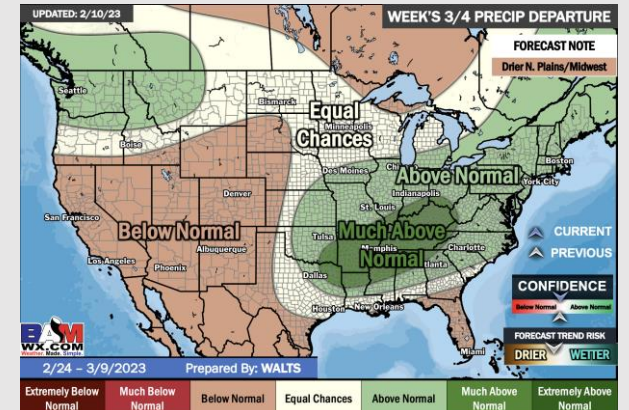
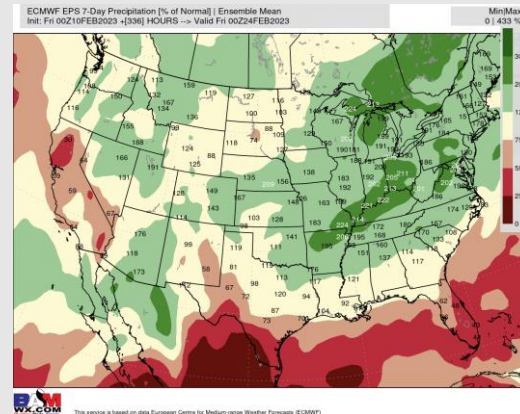
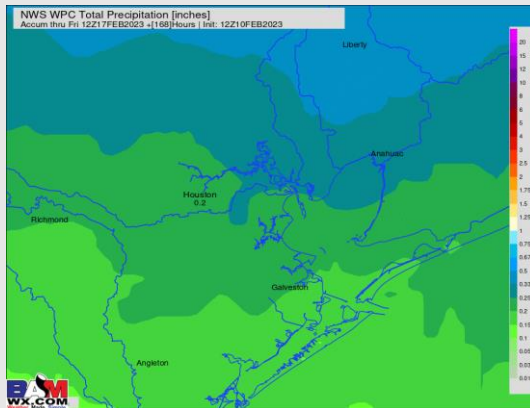
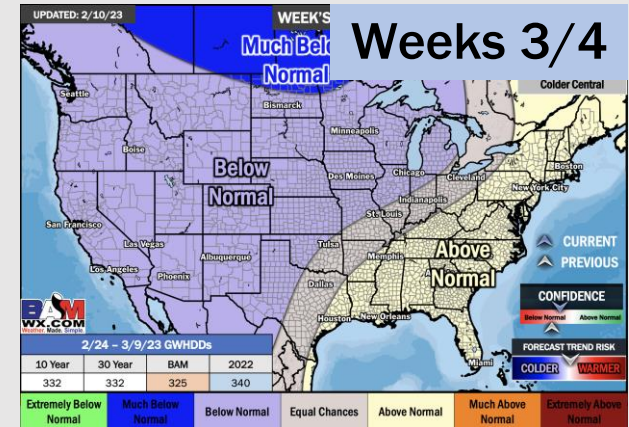
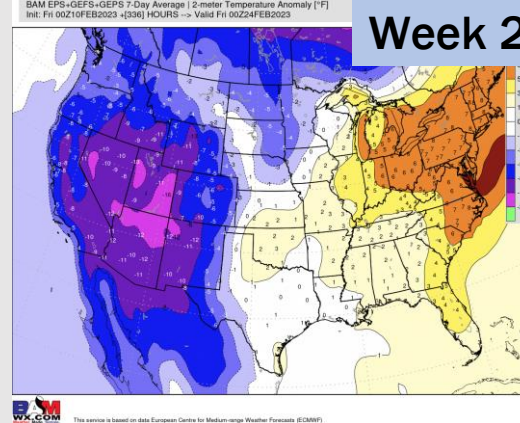
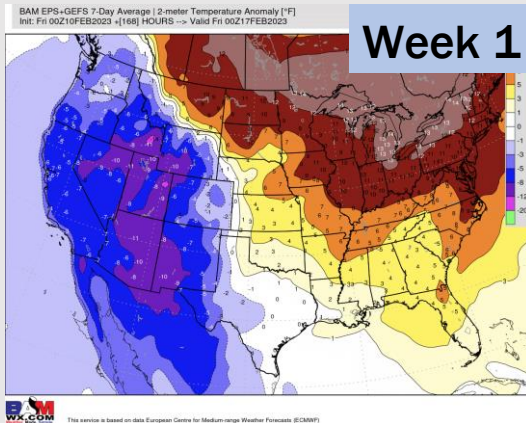


Wind Speed
9 AM CT



High Temps
Tuesday

Houston Pilots: 2/12/2023



- A dry next several days will give way to a more active Tuesday/Wednesday, before another dry stretch beyond that. Temps expected to remain near normal.
- Expecting near to below normal precipitation chances and normal temperatures for the week 2 timeframe.
- Equal chances for precipitation and above normal temperatures favored in the week 3/4 timeframe.