

Houston Pilots Forecast Package



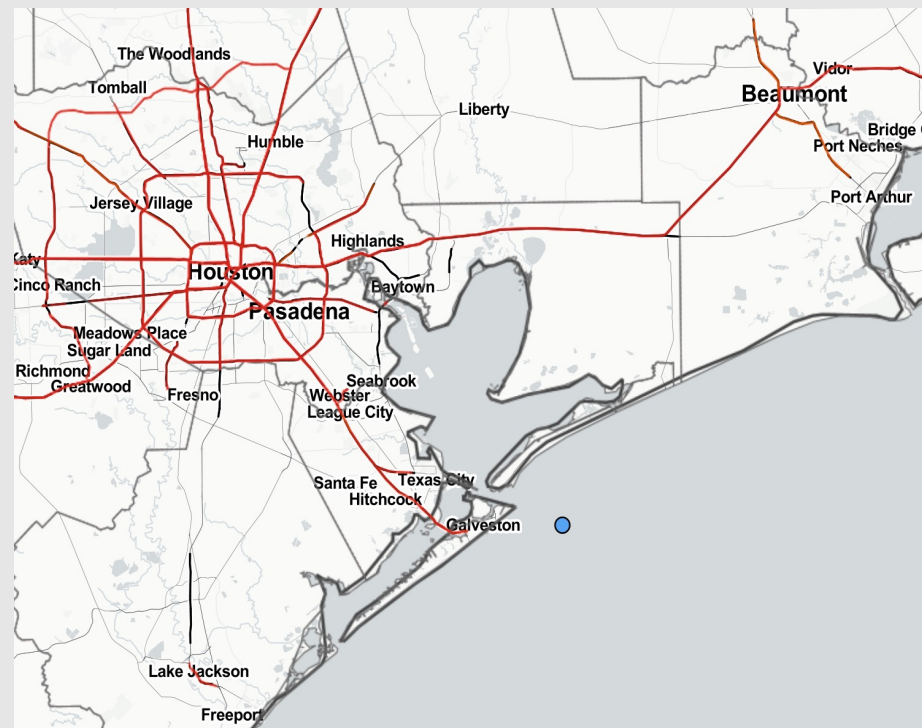
Updated: 11:45 AM CT

Sunday, February 12, 2023

Forecaster: Josh Collins

Weather Headlines

- Calmer winds expected throughout the rest of the day today, with winds picking back up Monday afternoon.
- Anticipating dry conditions out through Monday, with next chance of rain being Tuesday mid-morning.
- Although there is a chance for patchy radiation fog Monday AM, sea fog does not look to be a widespread threat over the next few days. The next timeframe to look out for in terms of sea fog potential will be Wednesday.



Radar/NWS Alerts: 11:45 AM CT



As always, please do not hesitate to reach out to us with any forecast questions via the chat option on the Weather Porthole or our on-call number, **(317)-560-8122** press 1 for forecast questions.

Houston Pilots Extended Range Visibility Report



Wednesday 2/15/23

Winds look to be from the SSW during the morning hours of Wednesday, shifting to from the SE by the late morning. Favoring sea fog to be possible Wednesday.

Confidence



Friday 2/17/23

Elevated northerly winds expected all day Friday, making sea fog unlikely.

Confidence



Thursday 2/16/23

A cold front is expected to move through the area during the early AM hours, shifting to NW winds and making sea fog unlikely.

Confidence



Chance for Reduced Visibility

Wednesday AM	Possible
Wednesday PM	Possible
Thursday AM	Unlikely
Thursday PM	Unlikely
Friday AM	Unlikely
Friday PM	Unlikely

Houston Pilots Visibility Report



Time	Sun 11am	Sun 12pm	Sun 1pm	Sun 2pm	Sun 3pm	Sun 4pm	Sun 5pm	Sun 6pm	Sun 7pm	Sun 8pm	Sun 9pm	Sun 10pm	Sun 11pm	Mon 12am	Mon 1am	Mon 2am	Mon 3am	Mon 4am	Mon 5am	Mon 6am	Mon 7am	Mon 8am	Mon 9am	Mon 10am	Mon 11am	Mon 12pm	Mon 1pm	Mon 2pm	Mon 3pm	Mon 4pm	Mon 5pm	Mon 6pm	Mon 7pm	Mon 8pm	Mon 9pm	Mon 10pm	
610 Bridge	10	10	10	10	10	10	10	10	10	10	10	10	10	10	10	10	10	10	10	10	10	9	10	10	10	10	10	10	10	10	10	10	10	10	10	10	
Kinder 1	10	10	10	10	10	10	10	10	10	10	10	10	10	10	10	10	10	10	10	10	10	9	10	10	10	10	10	10	10	10	10	10	10	10	10	10	
Greens Bayou	10	10	10	10	10	10	10	10	10	10	10	10	10	10	10	10	10	10	10	10	10	9	10	10	10	10	10	10	10	10	10	10	10	10	10	10	
Shell Crude	10	10	10	10	10	10	10	10	10	10	10	10	10	10	9	10	10	10	10	10	10	9	10	10	10	10	10	10	10	10	10	10	10	10	10	10	
Lynchburg Ferries	10	10	10	10	10	10	10	10	10	10	10	10	10	10	9	10	10	10	10	10	10	9	10	10	10	10	10	10	10	10	10	10	10	10	10	10	
Exxon 3	10	10	10	10	10	10	10	10	10	10	10	10	10	9	9	10	10	10	10	10	10	9	10	10	10	10	10	10	10	10	10	10	10	10	10	10	
Morgans Point	10	10	10	10	10	10	10	10	10	10	10	10	9	9	9	10	10	10	10	10	10	9	10	10	10	10	10	10	10	10	10	10	10	10	10	10	
75/76	10	10	10	10	10	10	10	10	10	10	10	10	9	9	9	10	10	10	10	10	10	9	10	10	10	10	10	10	10	10	10	10	10	10	10	10	
63/64	10	10	10	10	10	10	10	10	10	10	10	10	9	9	9	10	10	10	10	10	10	9	10	10	10	10	10	10	10	10	10	10	10	10	10	10	
51/52	10	10	10	10	10	10	10	10	10	10	10	10	9	9	9	10	10	10	10	10	10	9	10	10	10	10	10	10	10	10	10	10	10	10	10	10	
37/38	10	10	10	10	10	10	10	10	10	10	10	10	10	10	10	10	10	10	10	10	10	9	10	10	10	10	10	10	10	10	10	10	10	10	10	10	
25/26	10	10	10	10	10	10	10	10	10	10	10	10	10	10	10	10	10	10	10	10	10	9	10	10	10	10	10	10	10	10	10	10	10	10	10	10	
11/12	10	10	10	10	10	10	10	10	10	10	10	10	10	10	10	10	10	10	10	10	10	10	10	10	10	10	10	10	10	10	10	10	10	10	10	10	
1 & 2 Bravo	10	10	10	10	10	10	10	10	10	10	10	10	10	10	10	10	10	10	10	10	10	10	10	10	10	10	10	10	10	10	10	10	9	9	9	9	10

Houston Pilots Wind Report



Example

Sustained wind 13 Knots

Gusts 18 Knots

Wind from the N

WS: 13
G:18
N

Time Knots	Sun 11am	Sun 12pm	Sun 1pm	Sun 2pm	Sun 3pm	Sun 4pm	Sun 5pm	Sun 6pm	Sun 7pm	Sun 8pm	Sun 9pm	Sun 10pm	Sun 11pm	Mon 12am	Mon 1am	Mon 2am	Mon 3am	Mon 4am	Mon 5am	Mon 6am	Mon 7am	Mon 8am	Mon 9am	Mon 10am	Mon 11am	Mon 12pm	Mon 1pm	Mon 2pm	Mon 3pm	Mon 4pm	Mon 5pm	Mon 6pm	Mon 7pm	Mon 8pm	Mon 9pm	Mon 10pm	
610 Bridge	1	1	3	3	4	4	4	3	2	3	3	4	3	3	3	3	3	2	2	2	1	2	3	4	5	6	6	7	8	9	10	10	9	10	10	11	
	3	3	4	4	5	5	4	3	3	7	9	10	8	7	6	5	4	3	2	2	2	2	3	4	6	7	8	9	10	10	13	14	14	15	15	17	
	W	SSW	WSW	W	WNW	NW	WNW	SSW	E	SE	S	S	S	S	S	SSW	SSW	S	SSE	SSE	ESE	ESE	SE	SSE	S	S	S	SSE	SSE	SSE	SSE	SE	SE	SE	SE	SE	
Kinder 1	1	1	2	2	4	4	3	3	3	3	4	3	3	3	3	3	3	2	2	2	1	2	3	3	5	6	6	8	9	9	10	10	9	10	10	11	
	3	3	4	4	5	5	4	4	7	9	9	8	8	6	6	5	4	2	2	2	2	2	3	6	7	8	9	10	10	11	13	14	14	14	15	17	
	WSW	SSW	WSW	W	WNW	WNW	WSW	SSE	E	SE	S	SSE	S	S	S	SSW	SSW	SSW	S	SSE	SSE	ESE	ESE	SE	SSE	S	S	S	SSE	SSE	SSE	SE	SE	SE	SE	SE	
Greens Bayou	1	1	2	2	3	3	3	4	3	3	4	3	3	3	3	3	3	2	1	1	1	1	3	5	6	7	8	9	10	10	10	9	10	10	11		
	2	3	4	3	4	5	4	6	8	9	9	7	7	6	5	5	4	3	2	2	2	2	3	6	7	8	8	10	10	11	13	14	14	14	15	17	
	WSW	S	SW	SW	WSW	SW	S	ESE	ESE	SSE	SSE	SSE	SSE	SSE	S	SSW	SSW	SSW	S	SSE	ESE	ESE	SE	SSE	S	S	S	SSE	SE	SE	SE	SE	SE	SE	SE	SE	
Shell Crude	0	1	2	2	3	3	4	4	3	4	4	3	3	3	3	3	3	2	1	1	1	2	3	5	6	7	8	9	10	10	9	9	10	10	11		
	2	3	4	4	5	5	4	7	9	9	8	7	6	5	5	5	4	3	2	2	2	2	4	6	7	8	8	10	11	12	13	13	14	14	15	16	
	WSW	S	SSW	SSW	SSW	S	SE	ESE	ESE	SSE	SSE	SSE	SSE	S	S	SSW	SSW	SSW	SSW	S	ESE	E	ESE	SSE	S	S	SSE	SSE	SE	SE	SE	SE	SE	SE	SE	SE	
Lynchburg Ferries	0	1	2	3	3	3	5	4	3	4	4	4	3	3	3	3	3	2	1	1	1	2	3	4	5	6	7	8	9	10	10	9	10	10	11		
	1	4	5	5	6	6	6	8	10	9	9	8	7	5	5	5	4	3	2	2	2	2	4	6	7	8	8	10	11	12	13	13	14	14	15	16	
	WSW	SSE	SSW	SSE	SSE	SSE	SE	SE	ESE	SSE	SSE	S	SSE	SSE	S	SSW	SSW	SSW	SSW	S	E	E	SE	SSE	S	S	SSE	SSE	SE	SE	SE	SE	SE	SE	SE	SE	
Exxon 3	0	1	3	4	4	4	5	4	4	4	4	4	3	3	3	3	3	2	2	2	1	2	3	4	5	6	7	9	9	10	10	10	10	10	11		
	1	4	6	6	7	6	6	10	10	9	8	7	6	5	4	5	4	3	2	2	2	3	4	6	7	8	9	10	11	12	13	13	13	14	14	16	
	SW	SE	SSE	SE	SE	SE	SE	SE	SE	SSE	SSE	S	S	S	S	SSW	SSW	SSW	SSW	S	E	E	ESE	SSE	SSE	SSE	SSE	SSE	SE	SE	SE	SE	SE	SE	SE	SE	
Morgans Point	1	3	5	5	5	5	5	5	5	5	5	4	4	3	3	4	3	2	2	2	2	3	4	5	6	7	9	10	11	11	11	11	11	11	13		
	1	4	6	7	6	6	8	10	10	9	8	7	5	4	4	5	4	3	2	3	3	3	4	6	7	8	9	11	12	13	14	13	14	14	16		
	SSE	SE	SSE	SE	SE	SE	ESE	ESE	SE	SSE	S	S	S	S	SSW	SSW	SSW	SSW	S	SSE	ESE	E	ESE	SE	SSE	SSE	SSE	SE	SE	SE	SE	SE	SE	SE	SE		
75/76	2	2	4	6	7	6	6	7	6	5	5	4	3	2	2	4	3	2	2	3	2	4	5	5	6	8	9	11	12	13	13	13	13	13	15		
	2	4	6	7	8	8	9	11	9	8	8	7	5	3	3	4	3	3	2	3	3	4	5	6	7	9	10	11	13	14	14	14	15	15	17		
	SSE	SE	SE	ESE	ESE	ESE	ESE	SE	SSE	SSE	S	S	S	SSW	SW	SSW	SW	SW	SW	SSW	ESE	E	E	ESE	ESE	SE	SE	SE	SE	SE	SE	SE	SE	SE	SE		
63/64	3	1	3	5	7	7	7	7	6	5	5	4	3	1	1	3	2	2	1	2	2	4	4	5	5	6	8	9	11	11	13	13	13	13	14	15	
	3	3	6	6	8	9	11	11	10	9	8	8	6	3	3	4	3	2	2	2	3	2	4	5	6	7	8	10	11	13	13	14	14	15	15	17	
	SW	ESE	SE	ESE	SE	SE	SE	SSE	SSE	SSE	S	S	S	SSW	SW	SSW	SSW	SW	SSW	SSW	SE	E	E	ESE	ESE	SE	SE	SE	SE	SE	SE	SE	SE	SE	SE		
51/52	4	1	2	3	5	7	8	8	6	6	5	5	4	1	1	3	2	2	2	1	2	4	4	5	5	6	8	9	10	10	12	12	12	13	13	15	
	4	3	5	5	8	10	11	11	11	10	9	8	5	5	3	3	2	2	2	2	3	4	4	6	7	8	9	11	12	13	13	13	14	15	16		
	WNW	SSE	SE	E	ESE	SE	SSE	SSE	SSE	S	S	S	S	SSW	SW	SSW	SW	SW	SSW	SSW	ESE	E	E	ESE	ESE	SE	SE	SE	SE	SE	SE	SE	SE	ESE	SE		
37/38	4	1	1	2	4	6	8	8	7	7	6	6	5	3	3	3	2	1	1	2	2	4	4	4	5	6	7	9	10	10	11	11	11	11	12	13	14
	5	2	5	6	7	9	10	11	11	11	10	10	9	8	8	4	3	2	2	2	2	3	4	5	6	7	8	9	10	11	12	12	12	13	13	15	
	NW	S	SE	E	SE	SSE	S	S	SSE	S	S	S	S	SSW	SSW	SSW	SW	SW	SSW	ESE	E	E	ESE	ESE	SE	SE	SE	SE	SE	SE	SE	ESE	SE	SE	SE		
25/26	4	1	1	2	4	6	8	7	6	6	6	6	5	4	4	3	3	2	2	2	3	3	4	5	5	6	7	8	9	10	9	10	10	11	12	13	
	4	2	5	5	7	8	9	11	11	11	11	11	10	10	10	5	4	3	2	3	3	4	5	6	7	8	8	10	10	11	11	11	12	13	15	16	
	NNW	SSW	SE	SE	SSE	S	S	S	S	S	S	S	S	SSW	SSW	SSW	SSW	SW	SSW	SSW	ESE	E	E	ESE	ESE	SE	SE	SE	SE	SE	SE	ESE	SE	SE	SE		
11/12	3	1	2	2	4	6	7	7	7	7	7	6	5	5	4	3	3	2	3	3	4	4	4	5	5	6	7	8	9	9	9	9	10	11	12	14	
	3	1	4	5	7	8	9	10	11	11	11	12	11	10	11	5	4	3	3	3	4	4	5	6	7	8	8	9	10	10	10	11	13	14	15	17	
	NNW	SSW	SE	SSE	S	S	S	S	S	S	S	S	S	SSW	SSW	SSW	SSW	SSW	SSW	SE	E	E	ESE	ESE	SE	SE	SE	SE	SE	SE	ESE	SE	ESE	SE	SE		
1 & 2 Bravo	3	1	1	2	3	4	6	8	8	9	9	10	9	7	7	6	4	3	3	3	4	4	4	5	5	6	6	7	8	10	10	11	13	14	15	16	
	4	1	3	5	7	9	10	10	10	11	11	12	11	10	11	7	6	5	5	4	4	5	5	6	7	8	8	9	10	11	12	14	15	16	17		
	NNW	W	SSW	SSW	SSW	SW	S	S	S	S	S	S	S	S	SSW	SSW	SSW	SSW	SSW	SSW	S	ESE	ESE	ESE	ESE	ESE	ESE	ESE	ESE	ESE	ESE	ESE	ESE	ESE	SE	SE	

Houston Pilots: Sun. 2/12/2023

Forecast Discussion

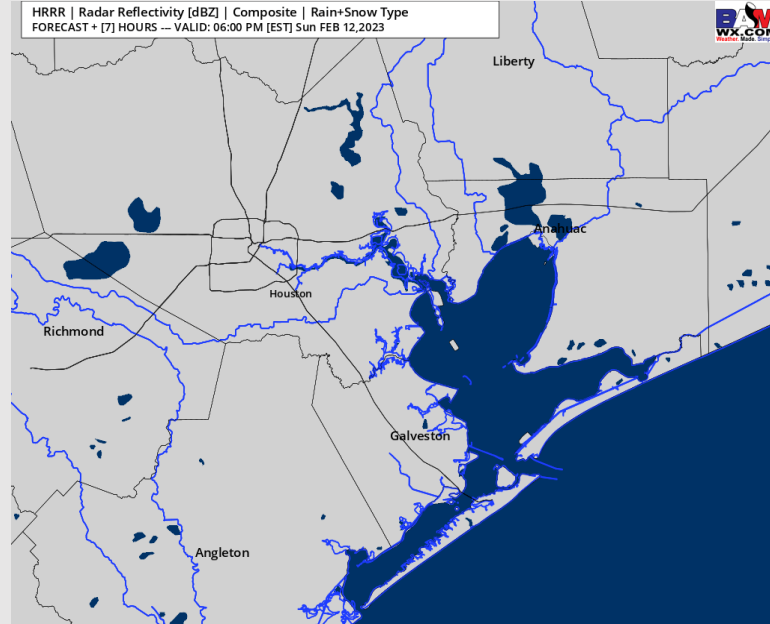
Precip: Anticipating dry conditions throughout the day today.

Wind: Winds shift to out of the SSW early this afternoon and remain that way for the rest of the day. Winds will be at 3-8 kts across all stations until 6 PM, after 6 PM winds will pick back up to 4-10 kts across all stations for the rest of the day.

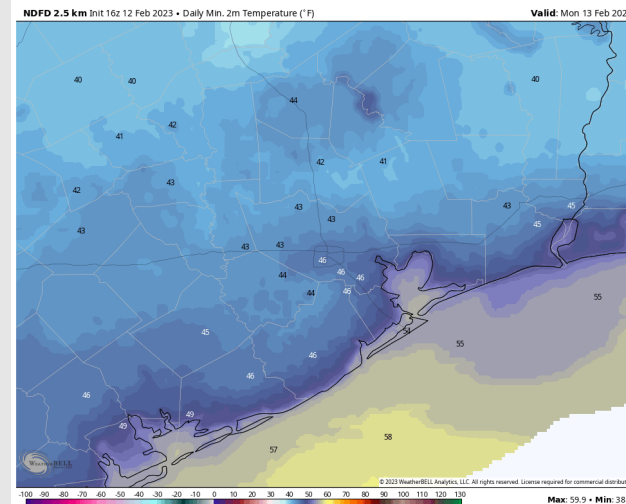
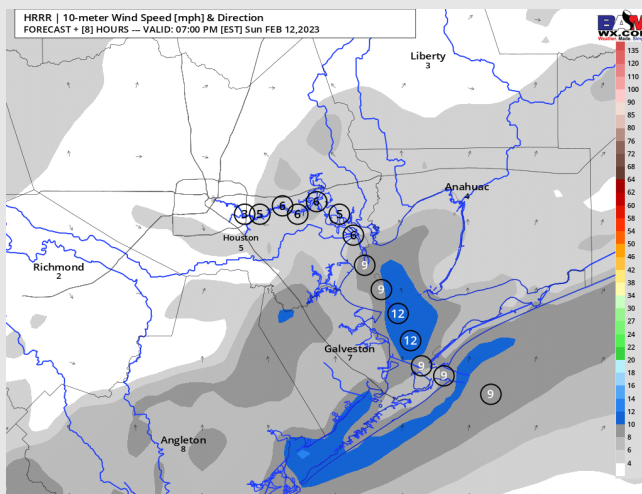
Temps: Low temperatures Monday morning in the low to mid 50s F across all stations.

Visibility: Not anticipating any visibility concerns at this time.

Precip Forecast: 5 PM CT



Wind Speed 6 PM CT



Low Temps Monday AM

Houston Pilots: Mon. 2/13/2023

Forecast Discussion

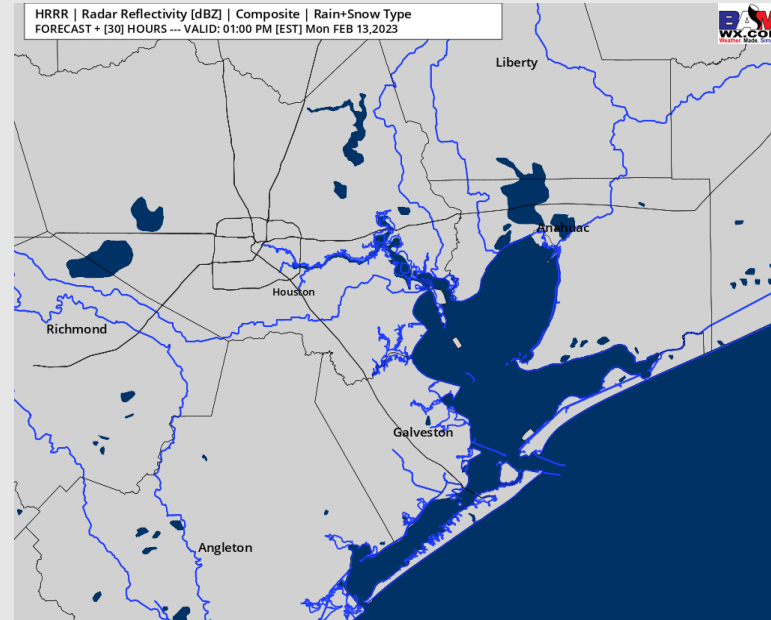
Precip: Anticipating a dry day for Monday.

Wind: Sustained winds will shift from the SSW to the SE by 10 AM and remain that way through the rest of the day. Winds for all stations will be at 3 - 8 kts until 2 PM. After 2 PM and through the rest of the night, winds gradually increase to 8 - 12 kts for stations north of Morgan's Point and 13 - 18 kts for stations south of Morgan's Point.

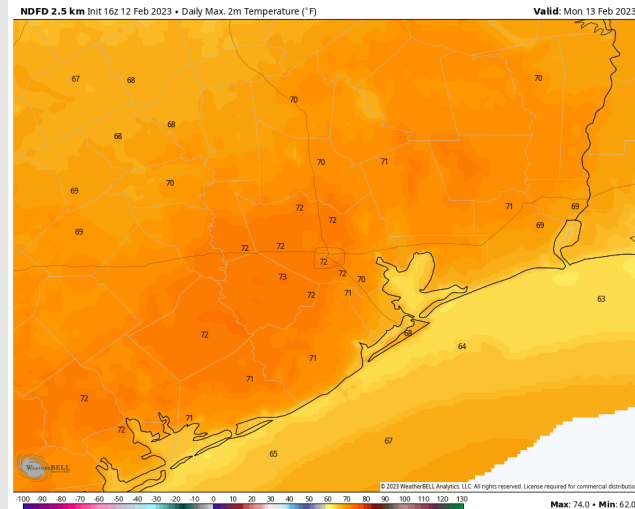
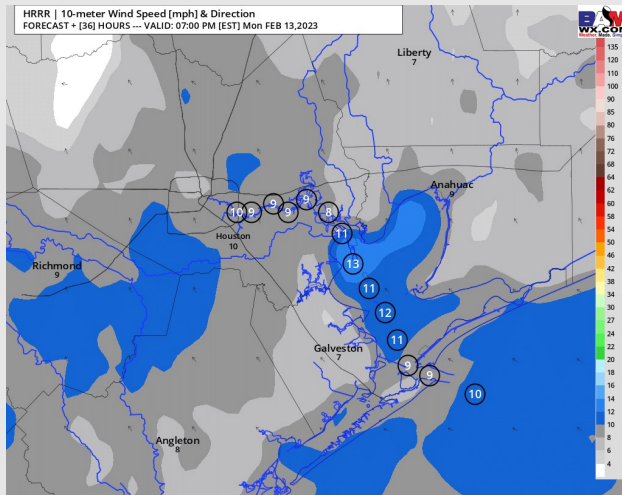
Temps: High temperatures Monday will be in the upper 60s F to low 70s F across all stations.

Visibility: Low-level moisture will be present during the morning hours of Monday that will make radiation fog possible NW of the stations however, not favoring visibility impacts for any station at this time.

Precip Forecast: 12 PM CT



Wind Speed
6 PM CT



High Temps
Monday

Houston Pilots: Tues. 2/14/2023

Forecast Discussion

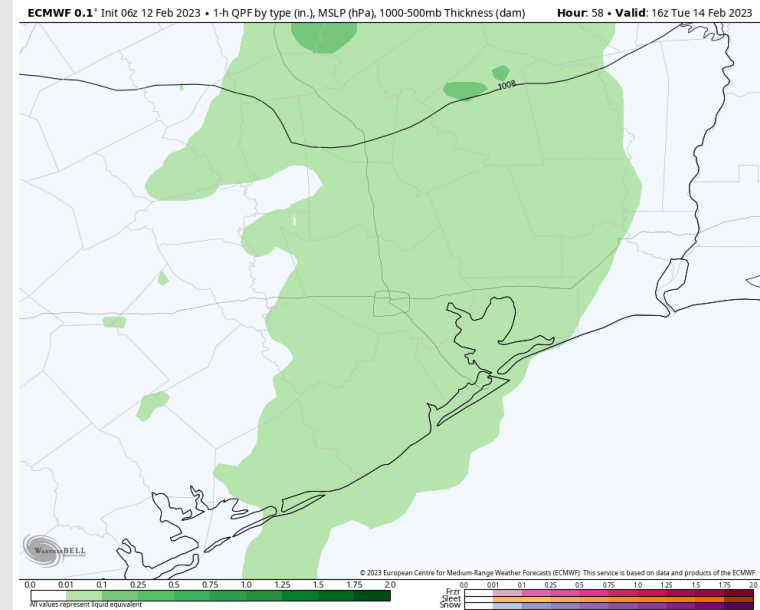
Precip: Some scattered showers will be around the area in the early AM hours (~30%) with better chances of showers/thunderstorms from 9 AM – 3 PM (70%). After 3 PM, favoring dry conditions for the rest of the day.

Wind: Sustained winds gradually shift from SE to SW and stay that way after 10 AM. Elevated winds of 11 – 16 kts for stations north of Morgan's Point and 16 – 22 kts for stations south of Morgan's Point will continue through Tuesday AM until 2 PM. Winds will then gradually decrease to 4 – 8 kts for stations north of Morgan's Point and 8 – 14 kts for stations south of Morgan's Point by 5 PM and stay that way for the rest of the evening. Wind gusts of 25 – 30 kts will be possible for all stations until 3 PM.

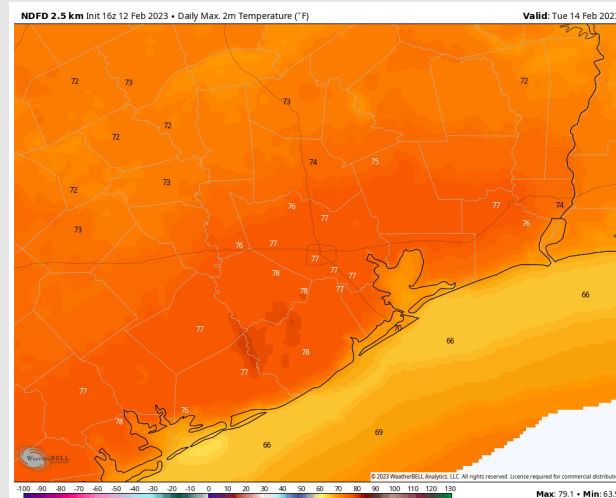
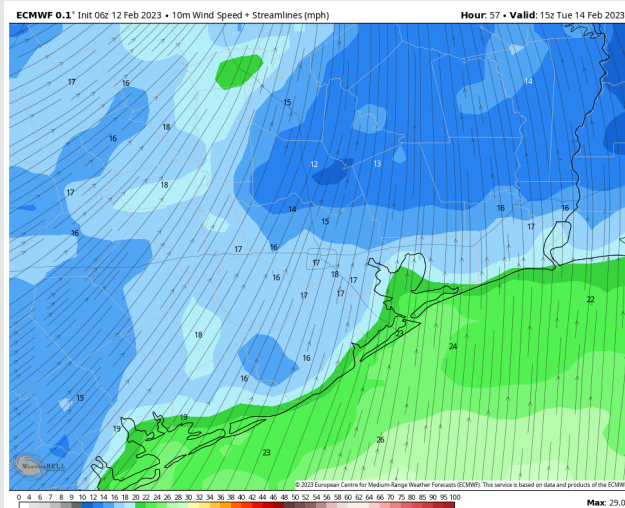
Temps: High temperatures Tuesday will be in the mid to upper 60s F near the Boarding Station and upper to mid 70s F across all other stations.

Visibility: Not anticipating any visibility concerns at this time.

Precip Forecast: 10 AM CT

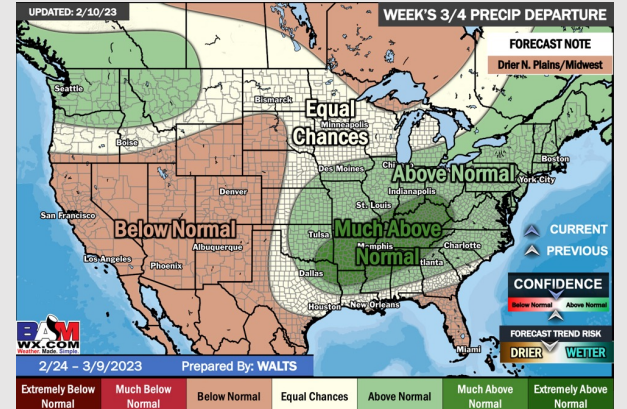
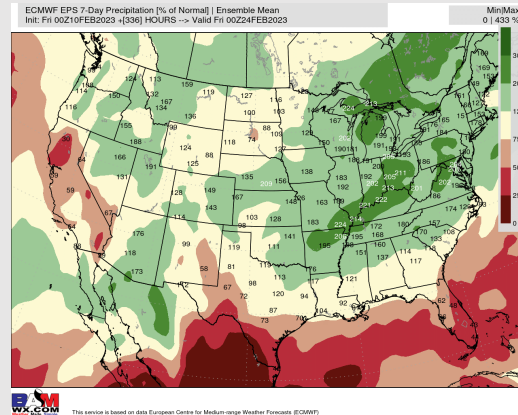
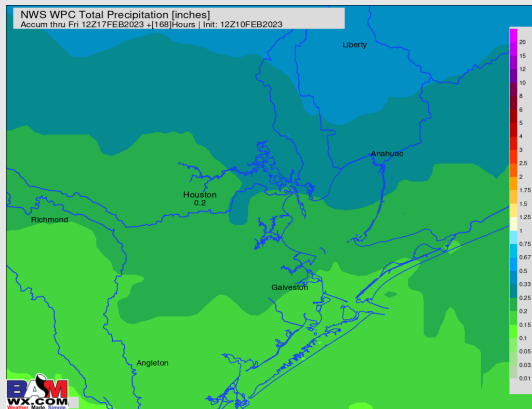
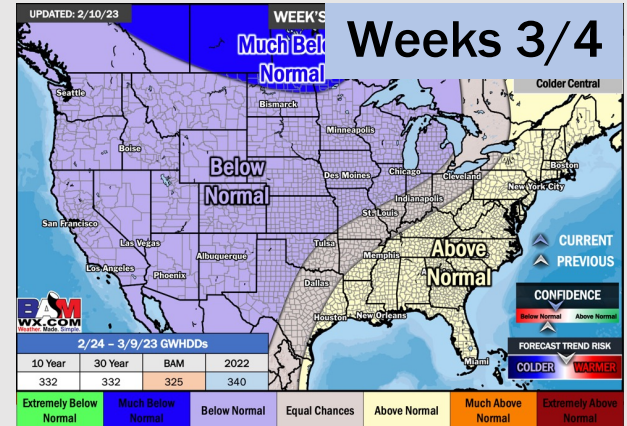
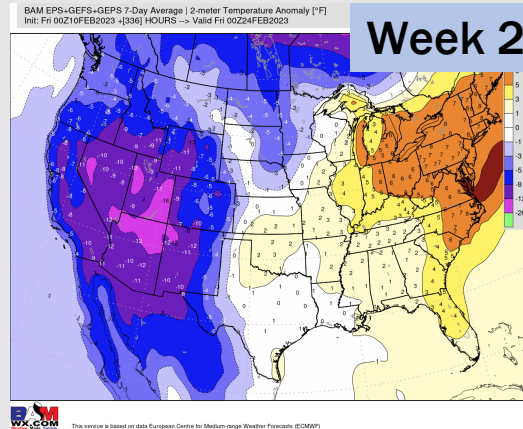
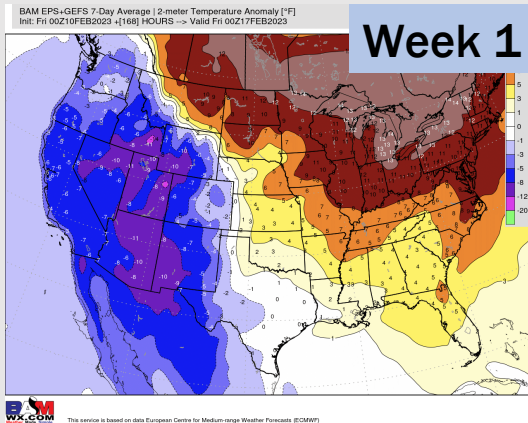


Wind Speed 9 AM CT



High Temps Tuesday

Houston Pilots: 2/12/23



- A dry next several days will give way to a more active Tuesday/Wednesday, before another dry stretch beyond that. Temps expected to remain near normal.
- Expecting near to below normal precipitation chances and normal temperatures for the week 2 timeframe.
- Equal chances for precipitation and above normal temperatures favored in the week 3/4 timeframe.