

# Houston Pilots Forecast Package



Updated: 5:30 AM CT

Sunday, January 29, 2023

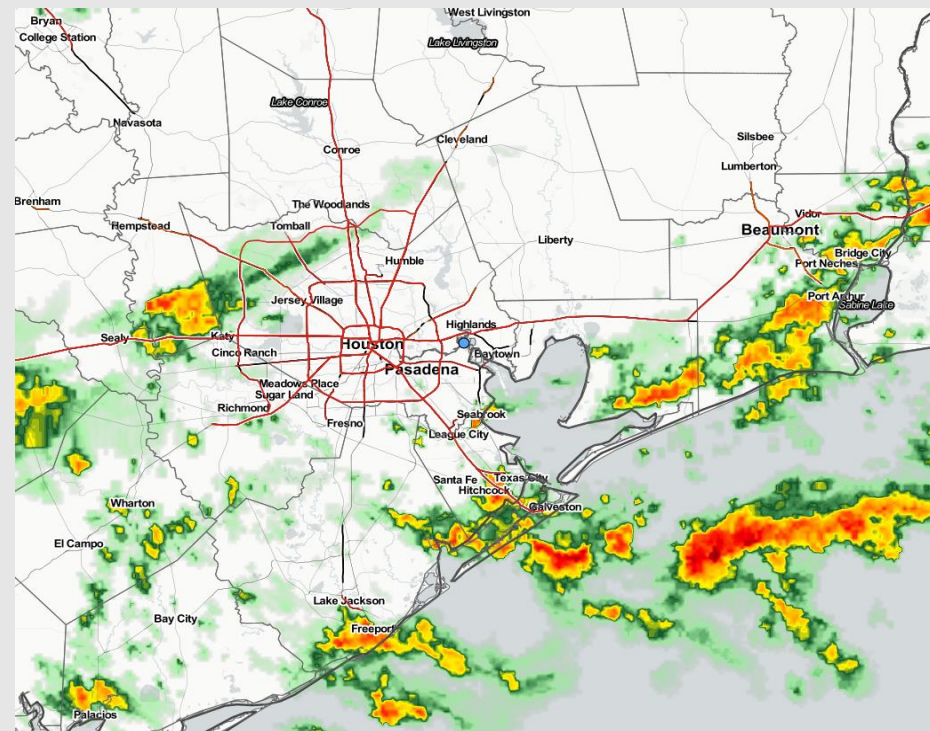
Forecaster: Jonathan Kipper

## Weather Headlines

➤ Fog chances will be persistent over the next few days, with the best chance to see improved visibility with no fog concerns arriving Thursday morning. Please continue to check the visibility reports for more in depth thinking.

➤ Up until 11 AM today will hold the best chance for rain and a few rumbles of thunder. The afternoon hours for today and Monday/Tuesday will hold scattered shower chances as well.

➤ Favoring the next three days to hold winds in the 5 – 15 kt range, with a few pockets of wind up to 18kts at the Boarding Station today. These wind ranges will make fog threats continuous especially with southeasterly winds.



**Radar/NWS Alerts: 5:30 AM CT**

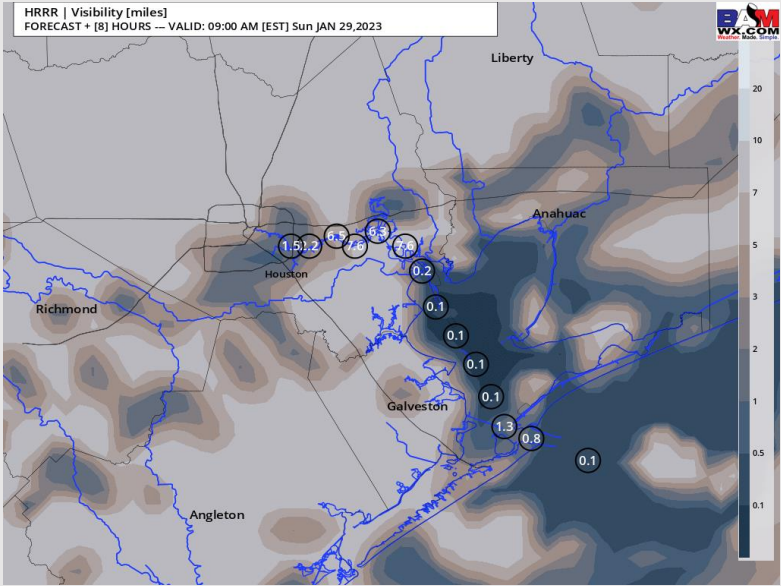


As always, please do not hesitate to reach out to us with any forecast questions via the chat option on the Weather Porthole or our on-call number, **(317)-560-8122** press 1 for forecast questions.

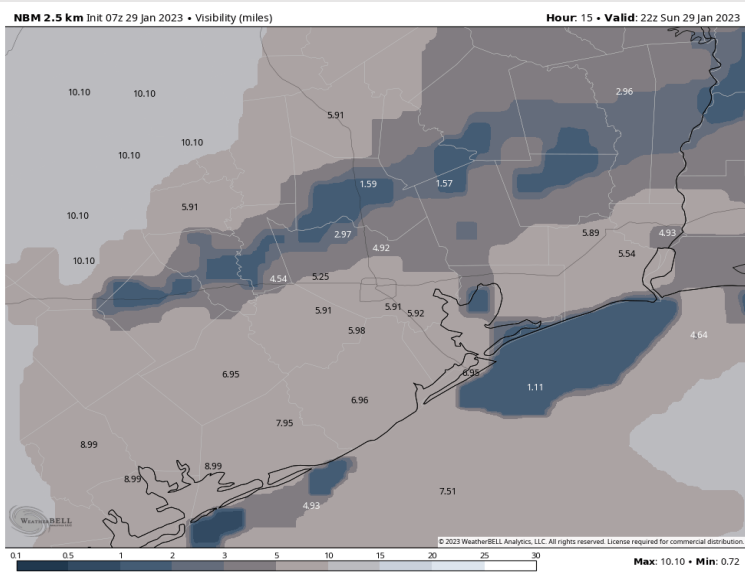
# Houston Pilots Visibility Report



## 8 AM CT SUN VISIBILITY



## 7 PM CT SUN VISIBILITY



## Confidence

Above  
Normal

Below  
Normal

TIMEFRAME DISCUSSED	THREAT
CURRENT – 11 PM SUN	Medium

- Favoring the current time through 9 AM as the best chance to see the lowest visibilities across the area, mainly south of Morgan’s point, where plentiful low-level moisture with thunderstorms could keep visibilities in the 2 – 4-mile range. A few pockets of 1-2 mile visibility will be possible as well. North of Morgan’s point can expect visibilities to be in the 3 – 6-mile range.
- From 10 –11 AM anticipating rain activity to stay off more towards the North and east, but sea fog will still be a continuous threat for the remainder of the day. From 10 – 12 PM visibilities could improve slightly to 3 – 5 miles South of Morgan’s Point, but towards 2 PM visibilities will again stay in the 2 – 4 mile range south of Morgan’s Point.
- For the afternoon hours (post 2 PM), favoring more dense fog to roll in across the Boarding Station and 11/12 capable of reducing visibilities to less than one mile.

# Houston Pilots Extended Range Visibility Report



## Wednesday 2/1/23

Wednesday looks to have SSE winds in the 10 – 15 kt range – conducive for sea fog.



## Friday 2/3/23

Anticipating northwesterly to northerly winds for Friday, making foggy conditions unlikely.



## Thursday 2/2/23

A flip from the SE to the NW after a frontal passage sometime in the early morning hours of Thursday should clear visibilities for the entire day.



## Chance for Reduced Visibility

Wednesday AM	Possible
Wednesday PM	Possible
Thursday AM	Unlikely
Thursday PM	Unlikely
Friday AM	Unlikely
Friday PM	Unlikely

# Houston Pilots Visibility Report



Refer to the slide above for the official BAM forecast. The chart is likely not 100% accurate with fog.

Time	Sun 4am	Sun 5am	Sun 6am	Sun 7am	Sun 8am	Sun 9am	Sun 10am	Sun 11am	Sun 12pm	Sun 1pm	Sun 2pm	Sun 3pm	Sun 4pm	Sun 5pm	Sun 6pm	Sun 7pm	Sun 8pm	Sun 9pm	Sun 10pm	Sun 11pm	Mon 12am	Mon 1am	Mon 2am	Mon 3am	Mon 4am	Mon 5am	Mon 6am	Mon 7am	Mon 8am	Mon 9am	Mon 10am	Mon 11am	Mon 12pm	Mon 1pm	Mon 2pm	Mon 3pm
610 Bridge	9	8	8	7	7	7	8	8	9	10	9	10	9	8	8	5	5	4	3	3	3	3	3	3	4	5	6	4	2	2	3	3	4	4	4	5
Kinder 1	9	8	8	7	7	7	7	8	9	10	9	10	9	8	8	5	5	4	4	4	4	3	3	4	5	5	6	4	3	3	4	4	4	5	5	5
Greens Bayou	9	8	8	7	7	7	7	8	9	10	9	10	10	8	8	5	6	4	4	6	5	3	4	6	6	6	7	6	5	5	5	5	6	6	6	6
Shell Crude	9	8	8	7	7	7	7	8	9	10	9	10	10	8	8	5	6	4	4	6	5	3	4	6	6	6	8	8	8	8	8	8	8	8	8	8
Lynchburg Ferries	9	8	8	7	7	7	7	8	9	10	9	10	10	8	8	5	6	4	4	6	5	3	4	6	6	6	8	8	8	8	8	8	8	8	8	8
Exxon 3	9	8	7	7	7	7	7	8	9	10	9	10	10	8	8	5	6	4	4	6	5	3	4	6	6	6	8	8	8	8	8	8	8	8	8	8
Morgans Point	9	8	7	7	7	7	7	8	9	9	9	10	10	8	8	5	6	4	4	6	5	2	4	6	6	6	8	8	8	8	8	8	8	8	8	8
75/76	8	8	7	7	7	7	7	8	9	9	9	10	10	8	8	5	6	4	4	6	5	2	4	6	6	6	8	8	8	8	8	8	8	8	8	8
63/64	8	8	7	7	7	7	7	8	9	9	9	10	10	8	8	5	6	4	4	6	5	2	3	6	6	6	8	8	8	8	8	8	8	8	8	8
51/52	8	8	7	7	7	7	7	8	9	9	9	9	10	8	8	5	5	4	3	5	5	2	3	5	4	4	7	7	8	8	8	8	8	8	8	8
37/38	9	8	7	7	7	7	7	8	9	9	9	9	9	8	7	5	4	4	3	4	4	2	2	4	3	4	4	6	8	8	8	8	8	8	8	8
25/26	9	8	7	7	7	7	7	8	9	9	8	8	8	8	7	5	4	4	3	3	5	2	2	3	3	3	4	4	7	8	8	8	8	8	8	8
11/12	9	8	7	5	7	7	7	7	8	8	7	7	7	7	7	5	4	4	3	3	4	2	2	3	3	3	3	2	6	8	8	8	8	8	8	8
1 & 2 Bravo	9	8	7	7	7	7	7	7	8	8	7	7	7	7	6	0.88	0.54	0.4	0.31	0.31	0.3	0.22	0.22	0.31	0.4	0.4	0.49	0.49	2	7	8	8	8	8	8	8

# Houston Pilots Wind Report



**Example**

Sustained wind 13 Knots

Gusts 18 Knots

Wind from the N

WS: 13  
G:18  
N

Time Knots	Sun 4am	Sun 5am	Sun 6am	Sun 7am	Sun 8am	Sun 9am	Sun 10am	Sun 11am	Sun 12pm	Sun 1pm	Sun 2pm	Sun 3pm	Sun 4pm	Sun 5pm	Sun 6pm	Sun 7pm	Sun 8pm	Sun 9pm	Sun 10pm	Sun 11pm	Mon 12am	Mon 1am	Mon 2am	Mon 3am	Mon 4am	Mon 5am	Mon 6am	Mon 7am	Mon 8am	Mon 9am	Mon 10am	Mon 11am	Mon 12pm	Mon 1pm	Mon 2pm	Mon 3pm
610 Bridge	5	4	5	6	4	7	5	7	9	10	8	6	7	3	2	6	6	6	6	6	6	6	6	6	6	6	6	6	6	6	6	6	6	6	6	6
	16	13	14	15	14	14	11	20	22	22	21	18	20	13	8	9	9	9	9	9	9	9	9	9	9	9	9	9	9	9	9	9	9	9	9	
	S	S	SSE	S	SE	SSE	SE	SW	SW	SSW	SW	SW	SW	SW	W	NW	NNW	N	N	N	N	N	N	N	N	N	NNW	S	ESE	N	ENE	N	NE	N	S	N
Kinder 1	6	4	5	6	5	7	6	7	9	10	8	6	7	3	2	6	6	6	6	6	6	6	6	6	6	6	6	6	6	6	6	6	6	6	6	6
	16	12	15	15	14	15	10	20	22	22	21	19	20	12	8	9	9	9	9	9	9	9	9	9	9	9	9	9	9	9	9	9	9	9	9	9
	S	S	SSE	S	SSE	SSE	SE	SSW	SW	SSW	SW	SW	SW	SW	WNW	NW	NNW	N	N	N	N	N	N	N	N	N	N	SW	NE	NNE	N	N	E	N	WSW	N
Greens Bayou	6	4	5	7	5	8	5	6	8	10	8	7	7	3	3	5	5	5	6	6	6	6	6	6	6	6	6	6	6	6	6	6	6	6	6	6
	15	11	14	15	15	16	8	18	22	22	21	19	19	12	8	8	8	8	9	9	9	9	9	9	9	9	9	9	9	9	9	9	9	9	9	9
	S	S	SSE	SSE	SSE	SSE	SE	SSW	SW	SSW	SW	SW	WSW	SW	NW	NNW	NNW	N	N	N	N	N	N	N	N	N	NNW	NNE	SSE	N	ENE	SW	N	SW	N	N
Shell Crude	6	4	6	5	6	9	5	6	9	9	8	7	8	4	2	5	5	5	5	6	6	6	6	6	6	6	6	6	6	6	6	6	6	6	6	6
	15	11	14	12	15	16	8	18	22	21	22	19	19	13	8	8	8	8	8	8	8	8	8	8	8	8	8	8	8	8	8	8	8	8	8	8
	S	S	SSE	SSE	SSE	SSE	SE	S	SSW	SSW	SSW	SSW	SSW	SSW	WNW	NW	NNW	N	NNW	N	N	N	N	N	N	N	N	N	N	N	N	N	N	N	N	N
Lynchburg Ferries	6	3	6	5	6	10	4	6	8	9	7	8	8	4	3	5	5	5	6	6	6	6	6	6	6	6	6	6	6	6	6	6	6	6	6	6
	14	10	13	10	15	17	9	15	20	21	21	19	19	13	8	8	8	8	8	8	8	8	8	8	8	8	8	8	8	8	8	8	8	8	8	8
	S	SSE	SSE	SSE	SSE	SE	SSE	S	SW	SSW	SSW	SW	WSW	SW	WNW	NW	NNW	N	N	N	N	N	N	NNW	N	N	N	SSE	SW	N	ENE	ESE	SSE	NNE	N	N
Exxon 3	6	3	5	3	7	8	4	6	8	8	7	9	8	6	3	5	5	5	5	5	6	6	6	6	6	6	6	6	6	6	6	6	6	6	6	6
	13	9	11	6	15	13	9	13	20	20	21	21	19	16	10	8	8	7	8	8	8	8	8	8	8	8	8	8	8	8	8	8	8	8	8	8
	S	S	S	SE	SSE	SE	SSE	S	SSW	SSW	SSW	SW	SW	WSW	W	W	NNW	NNW	NNW	N	N	NNW	NNW	NNW	N	N	N	W	SE	N	NNE	ENE	SW	N	N	N
Morgans Point	8	5	3	3	7	5	4	6	7	7	8	8	8	6	5	6	6	6	6	6	6	6	6	6	6	6	6	6	6	6	6	6	6	6	6	6
	14	9	8	4	14	9	7	11	20	18	21	19	19	15	11	8	8	6	7	7	8	8	8	8	8	8	8	8	8	8	8	8	8	8	8	8
	S	S	SSW	E	SE	ESE	SE	SSE	S	SSW	SSW	SSW	SSW	SSW	WSW	WSW	SSW	WNW	NNW	NNW	N	NNW	NNW	NNW	N	N	N	N	N	N	N	N	N	N	N	N
75/76	9	6	4	4	8	4	5	4	6	10	10	10	10	7	6	8	7	5	5	5	5	5	5	5	5	5	5	5	5	5	5	5	5	5	5	5
	13	10	9	5	11	6	9	19	20	20	19	19	19	13	10	9	8	6	7	7	7	7	7	7	7	7	7	7	7	7	7	7	7	7	7	7
	S	SSE	S	E	ESE	SSE	ESE	SE	S	SSW	SSW	SSW	SSW	SSW	SW	WSW	SSW	SSW	SW	NW	N	NNW	NNW	NNW	N	N	NNW	N	NW	SSW	NNE	WSW	SW	NW	NE	N
63/64	6	5	4	4	10	7	5	3	9	12	12	11	11	8	6	8	6	5	5	5	5	6	7	7	7	7	7	7	7	7	7	7	7	7	7	7
	9	9	9	7	12	9	6	11	20	22	21	20	18	13	8	9	7	6	7	6	7	6	6	6	6	6	6	6	6	6	6	6	6	6	6	6
	SW	SE	SSW	ESE	ESE	S	ESE	SE	S	SSW	SSW	SSW	S	SSW	WSW	SSW	S	ESE	SSW	N	NNW	NNW	NNW	N	N	NNW	N	W	SSE	N	S	SSW	N	NE	WNW	
51/52	4	3	4	6	10	10	4	5	12	11	12	10	11	8	6	7	6	5	5	5	5	5	5	5	5	5	5	5	5	5	5	5	5	5	5	5
	10	8	10	10	12	12	7	15	21	21	19	17	17	12	9	9	7	6	7	7	7	7	7	7	7	7	7	7	7	7	7	7	7	7	7	7
	SSW	E	SSW	SE	ESE	ESE	S	S	SSW	SSW	SSW	SSW	S	S	SSW	SSW	S	SSE	WSW	NNW	NNW	NNW	N	N	N	N	N	N	N	N	N	N	N	N	N	N
37/38	4	4	6	6	9	8	7	9	12	11	10	9	10	7	6	7	6	5	5	5	5	5	5	5	5	5	5	5	5	5	5	5	5	5	5	5
	14	11	12	9	10	10	12	17	22	20	17	15	16	11	9	9	8	6	7	7	8	7	7	7	7	7	7	7	7	7	7	7	7	7	7	7
	SSE	ESE	SSE	SSE	E	ESE	SSW	SSW	SSW	SSW	SSW	SSW	SSW	SSW	SSW	SSW	SSW	S	W	NNW	NNW	NNW	NNW	N	N	N	N	N	N	N	N	N	N	N	N	N
25/26	8	7	7	6	7	6	9	10	12	11	9	8	8	6	6	7	6	5	5	5	5	5	5	5	5	5	5	5	5	5	5	5	5	5	5	5
	17	15	12	8	7	7	14	16	20	18	15	13	13	9	8	9	8	7	7	8	8	8	8	8	8	8	8	8	8	8	8	8	8	8	8	8
	S	SSE	SSE	S	ENE	ESE	SSW	SSW	SSW	SSW	SSW	SSW	SSW	SSW	SSW	SSW	SSW	S	WSW	NNW	NNW	NNW	NNW	N	N	NNW	NNW	NNW	NNW	N	N	NNE	N	NE	SE	SSW
11/12	11	8	6	6	7	6	8	9	10	10	7	6	6	4	3	4	3	3	3	3	3	3	3	3	3	3	3	3	3	3	3	3	3	3	3	3
	18	16	12	8	8	8	15	14	17	16	12	10	10	7	6	9	8	7	8	8	8	8	8	8	8	8	8	8	8	8	8	8	8	8	8	8
	S	SSE	SE	WNW	ENE	ESE	S	SSW	SSW	SSW	SSW	SSW	SSW	SSW	SSW	SSW	S	S	SSW	WSW	NW	NNW	NNW	N	N	N	NNW	N	N	N	N	N	NNE	ENE	ESE	ENE
1 & 2 Bravo	8	9	7	15	8	6	7	8	6	6	6	6	6	5	1	1	9	8	6	7	6	6	6	6	6	6	6	6	6	6	6	6	6	6	6	6
	17	18	14	25	10	8	17	17	17	16	13	12	10	6	6	10	10	9	9	9	8	8	8	8	8	8	8	8	8	8	8	8	8	8	8	8
	SSE	SSE	ESE	S	WSW	E	SSE	SSW	SW	S	S	S	SSW	SSW	SSW	SSW	S	SSW	SSW	SSW	WSW	NNW	NNW	NNW	N	N	N	E	ESE	N	N	N	N	N	N	N



# Houston Pilots: Sun. 1/29/2023

## Forecast Discussion

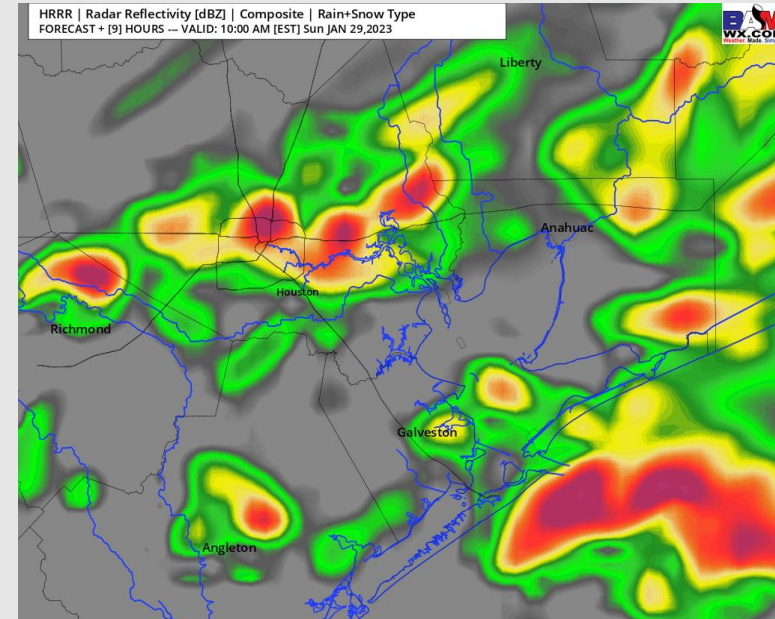
**Precip:** Favoring a 70-80% for widespread rain showers to continue until 11 AM Sunday. After 11 AM, favoring chances to reduce to 20-30% as showers become more isolated for the rest of the day.

**Wind:** Sustained winds will start out of the SSE Sunday morning until 12 PM. After 12 PM winds will shift to out of the SSW for the rest of the day. Winds at 8-13 kts during the AM hours for all stations. After 12 PM, winds will gradually increase to 9-17 kts across all stations until 6 PM. After 6 PM, winds will gradually die back down to 5-10 kts across all stations for the rest of the day.

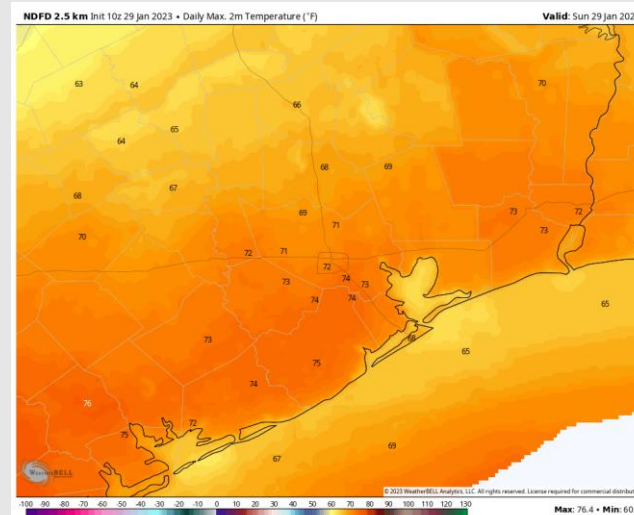
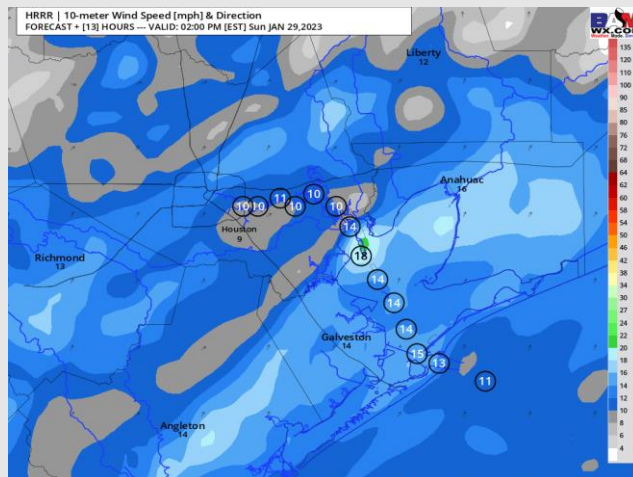
**Temps:** High temps today in the upper 60s F near the Boarding Station and in the mid 70s F across all other locations.

**Visibility:** Favoring patchy sea fog to continue throughout the AM hours today, while moderate/heavy rain showers may reduce visibility even more. Chances of sea fog returning in the PM hours as well. Check visibility report slide above for more detailed thinking.

## Precip Forecast: 9 AM CT



Wind Speed  
1 PM CT



High Temps  
Today

# Houston Pilots: Mon. 1/30/2023

## Forecast Discussion

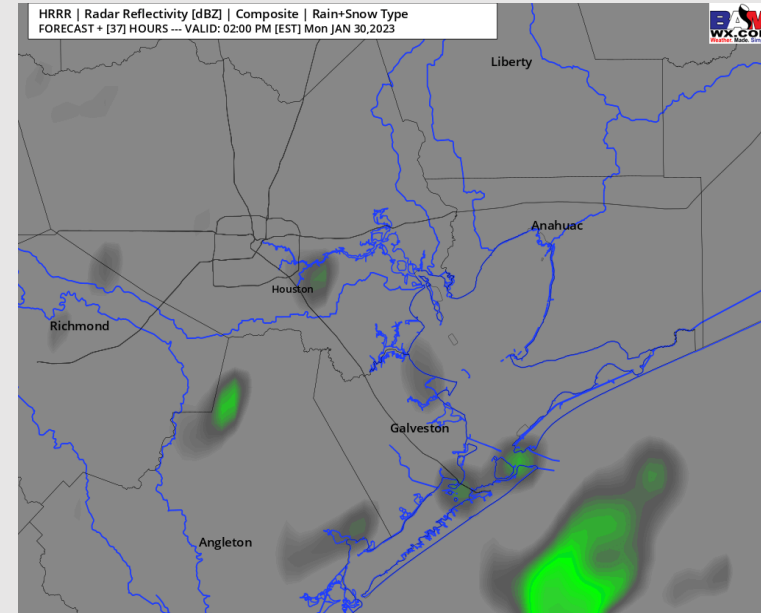
**Precip:** Anticipating a 10-20% chance of isolated showers throughout the entire day Monday. An increased chance of 40% near the Boarding Station will be from 1-4 PM, but then decreasing back down to 10-20% after 4 PM.

**Wind:** Sustained winds from the north will be out of the NNW throughout entire day on Monday. Winds will start at 4 – 8 kts north of Morgan's Point until 6 AM, where they will pickup to 7 – 13 kts and remain as such for the rest of the day. Stations south of Morgan's Point will see winds of 7-13 kts until 5 PM, where winds increase to 13 - 18 kts.

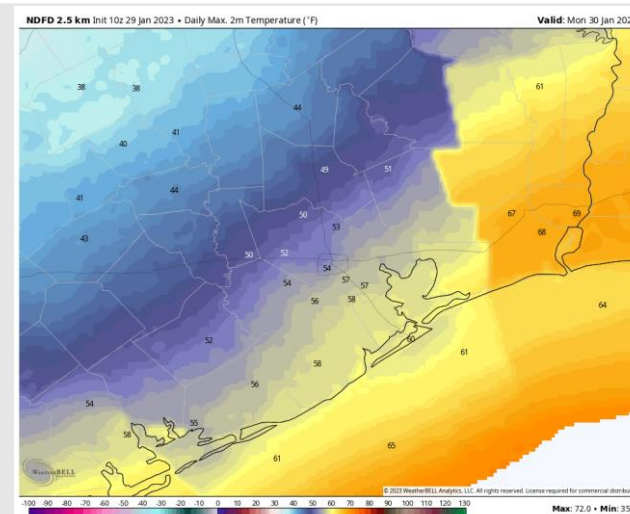
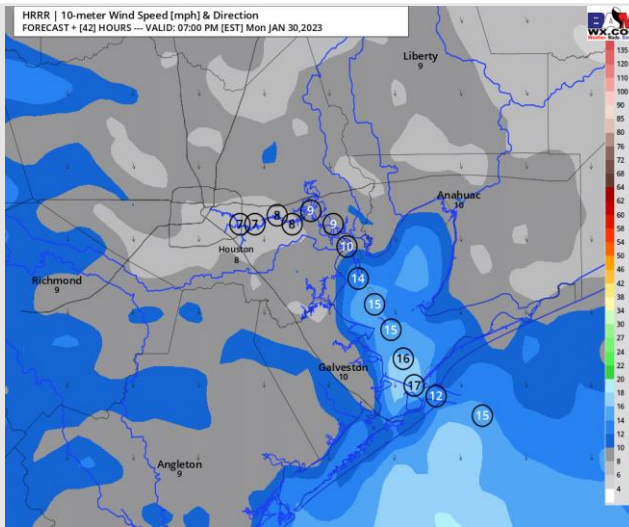
**Temps:** High temperatures Monday will be in the upper 50s F to near 60 F across all stations.

**Visibility:** Dense fog will be possible for Monday AM, especially during the 1 AM – 9 AM timeframe, with all stations at risk. More details will be added in forthcoming updates.

## Precip Forecast: 1 PM CT



## Wind Speed 6 PM CT



## High Temps Monday



# Houston Pilots: Tue. 1/31/2023

## Forecast Discussion

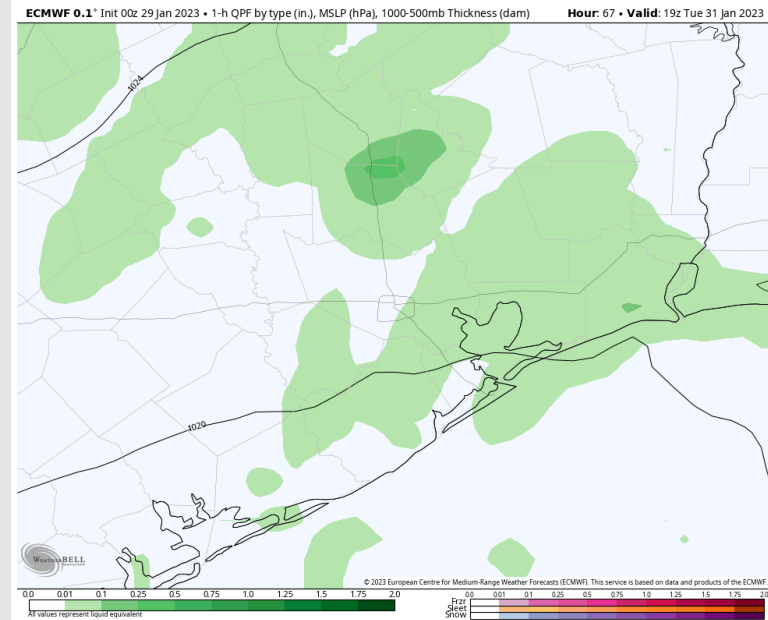
**Precip:** Anticipating a wet day for Tuesday with a 30% chance of scattered showers from 12AM – 6 AM. After 6 AM favoring scattered showers to fill in more, bringing a 60% chance of precipitation from 6 AM – 8 PM. After 8 PM shower activity will decrease in coverage to 30% once more.

**Wind:** Variable winds with favorability from the SE will veer more from the NE towards the late PM hours towards 7 PM. Winds N of Morgan's Point will be 5 – 9 kts and S of Morgan's point will be slightly elevated at 8 – 14 kts. A brief window of calmer winds will be possible from 2 – 6 PM where winds will be 3 – 7 kts, then after 6 PM expecting winds to return to respective ranges listed above.

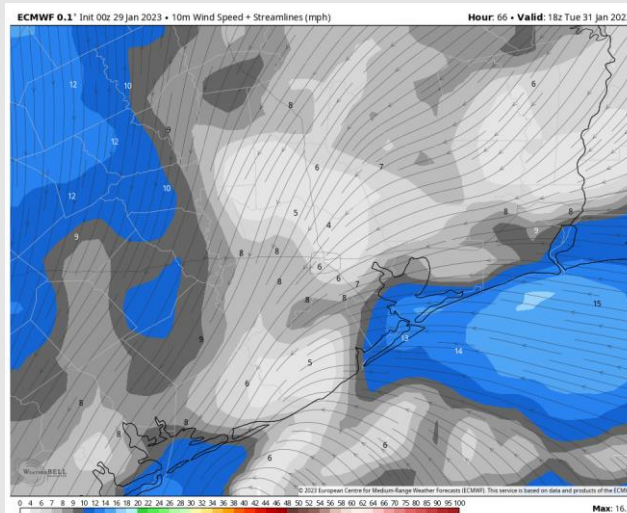
**Temps:** High temperatures Tuesday will be in the mid to lower 60s F across all stations.

**Visibility:** Patchy fog and some areas of dense fog will be possible across all stations on Tuesday. We will have more information added in future updates on the visibility report.

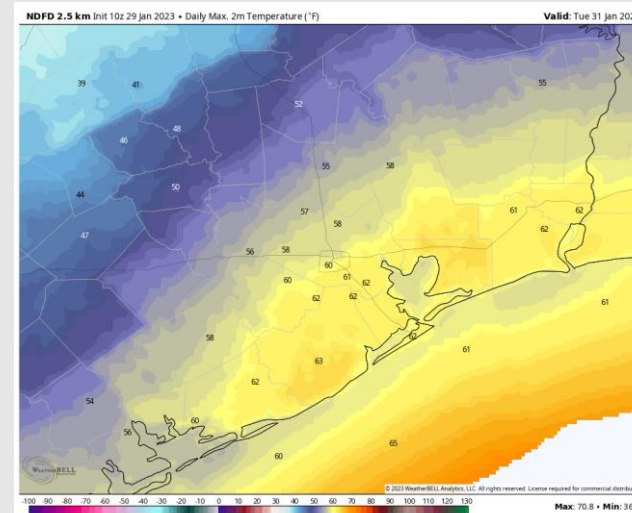
## Precip Forecast: 1 PM CT



Wind Speed  
12 PM CT

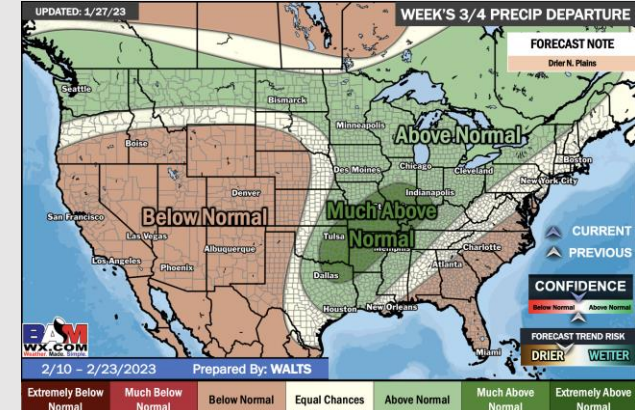
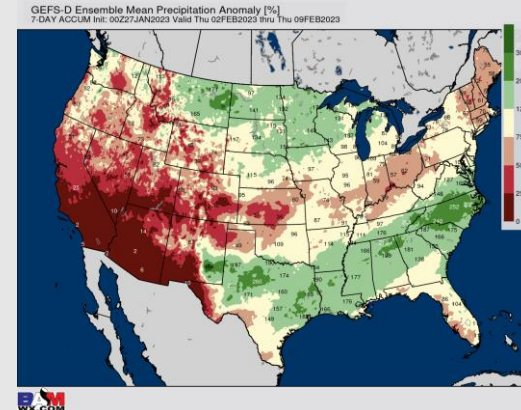
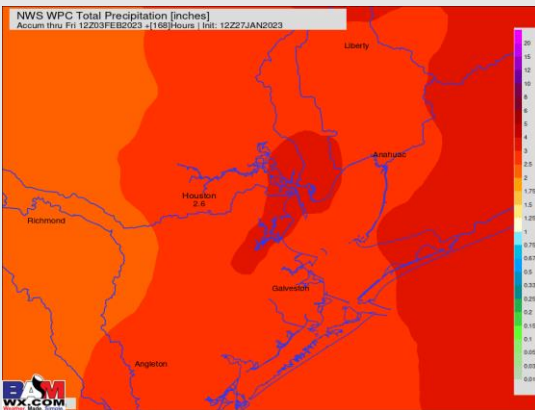
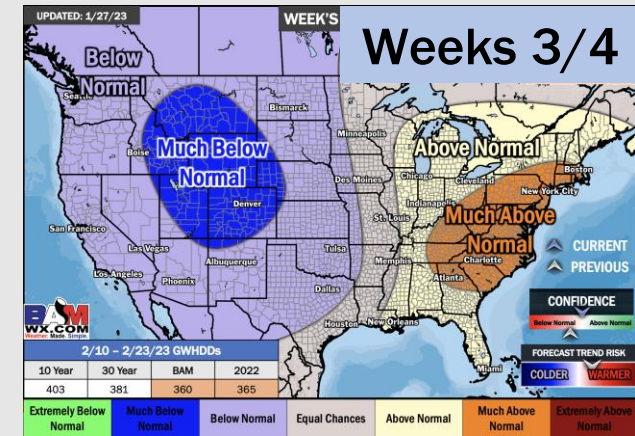
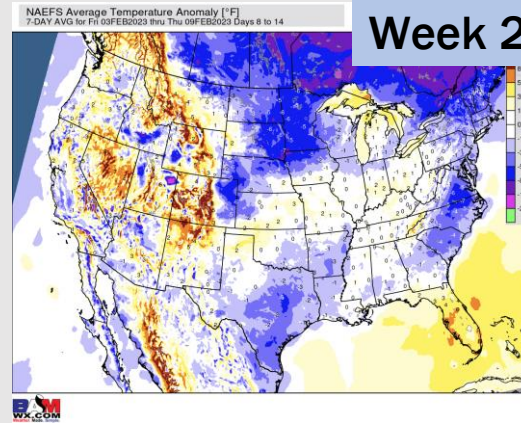
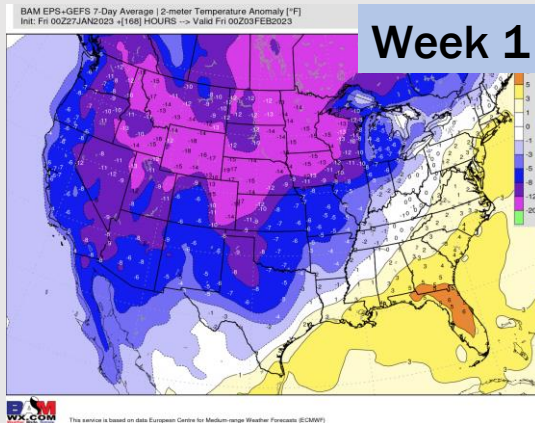


High Temps  
Tuesday





# Houston Pilots: 1/29/2023



- Anticipating the next rain chances to come Saturday and continue into the early half of next week. Temps will be slightly above normal in the 1 week timeframe.
- Expecting above normal precipitation and below normal temperatures for the 2 week timeframe.
- Above normal precipitation chances and below normal temperatures expected in the weeks <sup>3</sup>/<sub>4</sub> timeframe.