

Houston Pilots Forecast Package



Updated: 2:15 PM CT

Saturday, January 21, 2023

Forecaster: Alyssa McClung

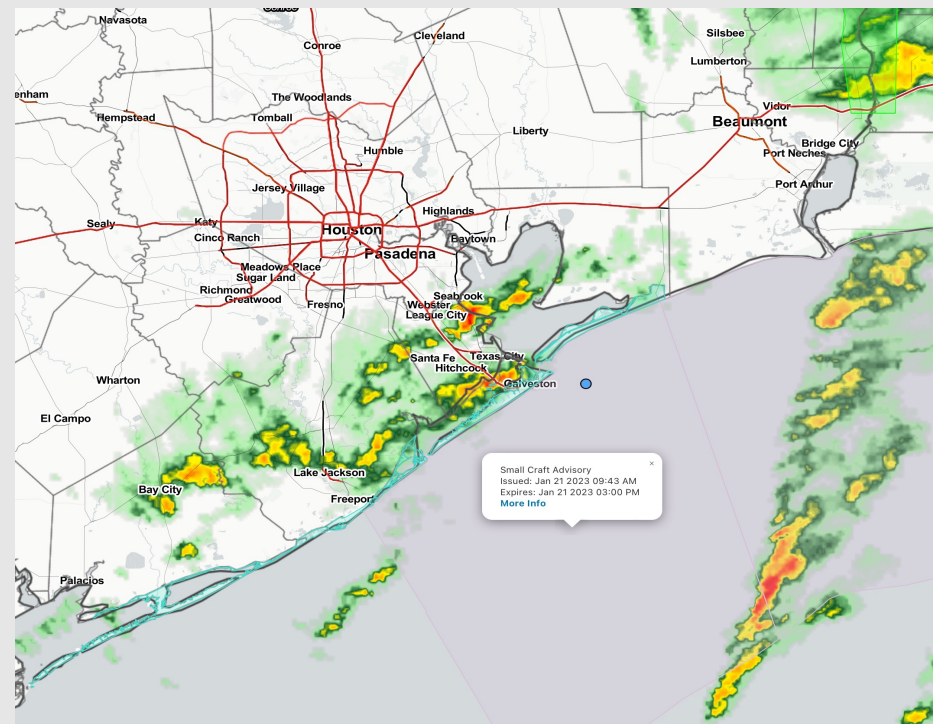
Weather Headlines

➤ Sunday morning may pose some reduced visibilities due to low level moisture producing misty conditions and possibly a couple pockets of fog (view visibility slide). Next threat comes THU.

➤ Today will consist of showers and thunderstorms with Sunday and Monday being dry days.

➤ Elevated winds for stations South of Morgan's Point will still be in play, especially near the Boarding Station (gusts of 25 kts possible into the evening). Sunday/Monday will feature winds in the 10 -15-kt range.

➤ Worth keeping eyes out on Wednesday – Thursday next week for low water levels over the bay from prolonged elevated NW winds.



Radar/NWS Alerts: 2:15 PM CT



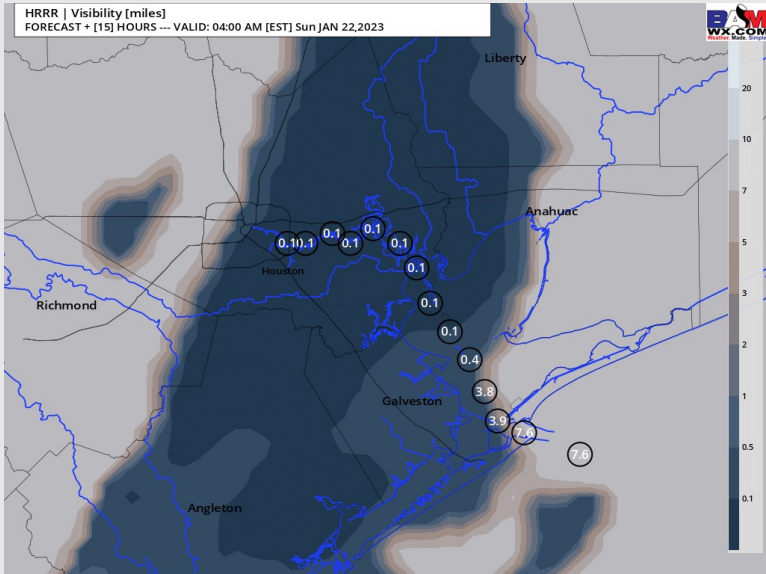
As always, please do not hesitate to reach out to us with any forecast questions via the chat option on the Weather Porthole or our on-call number, **(317)-560-8122** press 1 for forecast questions.

Houston Pilots Visibility Report



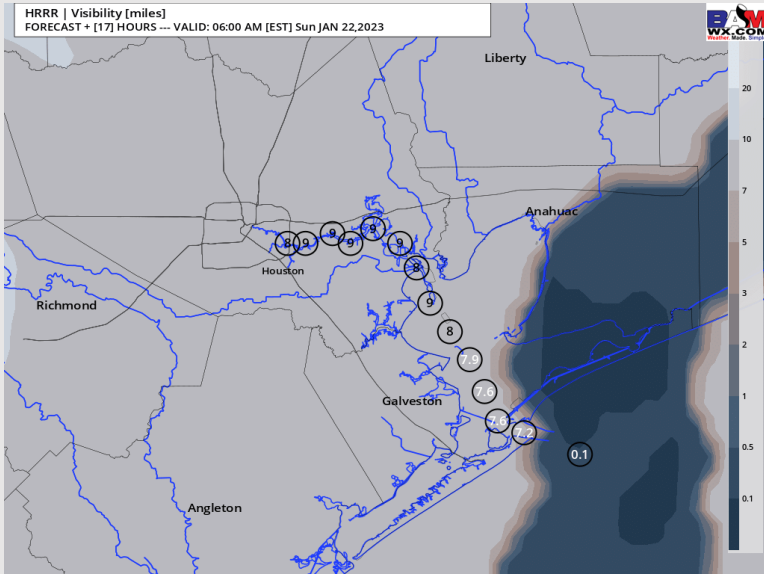
3 AM SUN VISIBILITY

HRRR | Visibility [miles]
FORECAST + [15] HOURS --- VALID: 04:00 AM [EST] Sun JAN 22,2023



5 AM SUN VISIBILITY

HRRR | Visibility [miles]
FORECAST + [17] HOURS --- VALID: 06:00 AM [EST] Sun JAN 22,2023



Confidence

Above
Normal

Below
Normal

**TIMEFRAME
DISCUSSED**

12 AM SUN – 6 AM SUN

THREAT

Low - Med

- Anticipating a low to medium risk for visibility reduced to 3 – 5 miles early Sunday between 12 – 6 AM CT for all stations as low level moisture encourages misty conditions ahead of front.
- A few isolated pockets of fog (visibility less than 1 mile) mixed within these misty conditions cannot be ruled out with the greatest risk being between 2 – 5 AM CT.
- Threat if favored to start at the 610 Bridge and continue to work south out ahead of cold front.
- Favoring fog threat to end after 6 AM CT once front works passes.

Houston Pilots Extended Range Visibility Report



Tuesday 1/24/23

Winds eventually shifting out of the NW by PM hours will make fog unlikely. Reduced visibility risks will come in the AM hours via heavy rain.

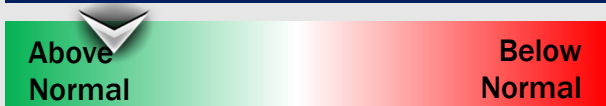
Confidence



Thursday 1/26/23

Winds will continue to be from the NW albeit calmer than Wednesday.

Confidence



Wednesday 1/25/23

Winds will be from the NW throughout the day, making fog unlikely. Need to watch for low water levels across the bay as winds may be particularly strong.

Confidence



Chance for Reduced Visibility

Tuesday AM	Unlikely
Tuesday PM	Unlikely
Wednesday AM	Unlikely
Wednesday PM	Unlikely
Thursday AM	Unlikely
Thursday PM	Unlikely

The image contains two logos. On the left is the logo for BAM WX.COM, featuring the letters 'BAM' in a stylized font with a white 'A' and a black shadow, followed by 'WX.COM' in black and 'Weather. Made. Simple.' in blue and red below it. On the right is the logo for Houston Pilots, featuring a large red 'H' with a black outline and the text 'Houston Pilots' in white to its left.

**Above
Normal**

**Below
Normal**

[illegible]

Houston Pilots Wind Report



Example

Sustained wind 13 Knots

Gusts 18 Knots

Wind from the N

WS: 13
G:18
N

Time Knots	Sat 1pm	Sat 2pm	Sat 3pm	Sat 4pm	Sat 5pm	Sat 6pm	Sat 7pm	Sat 8pm	Sat 9pm	Sat 10pm	Sat 11pm	Sun 12am	Sun 1am	Sun 2am	Sun 3am	Sun 4am	Sun 5am	Sun 6am	Sun 7am	Sun 8am	Sun 9am	Sun 10am	Sun 11am	Sun 12pm	Sun 1pm	Sun 2pm	Sun 3pm	Sun 4pm	Sun 5pm	Sun 6pm	Sun 7pm	Sun 8pm	Sun 9pm	Sun 10pm	Sun 11pm	Sun 12am
610 Bridge	5	6	6	5	4	5	5	4	3	3	2	3	4	5	7	8	10	11	13	13	14	13	13	13	12	12	12	11	10	7	6	5	4	4	4	5
	9	10	11	10	9	10	10	8	6	7	5	8	10	13	16	13	16	17	19	20	21	20	19	19	19	19	18	17	15	11	9	8	6	7	6	8
	NE	NE	ENE	NE	NNE	N	N	SW	NE	NNW	NNW	NW	NNW	NW	NW	NW	NW	NW	NW	NW	NW	NW	NW	NW	NW	NW	NW	NW	NW	NNW	NNW	NNW	WNW	N	NNE	
Kinder 1	5	5	6	6	4	5	5	4	3	3	2	3	4	5	7	8	10	11	12	13	13	13	13	13	12	12	11	10	7	6	5	4	4	4	5	
	9	9	11	10	9	10	10	8	6	7	5	7	11	14	16	12	15	17	19	19	20	20	19	19	19	19	18	17	15	11	9	8	7	7	6	8
	NE	NE	NE	NE	NNE	N	N	S	NE	NNW	NNW	NW	NNW	NW	NW	NW	NW	NW	NW	NW	NW	NW	NW	NW	NW	NW	NW	NW	NW	NNW	NNW	NNW	N	N	NNE	
Greens Bayou	5	6	6	6	5	6	6	4	3	3	2	2	5	5	8	8	10	11	12	12	13	13	12	12	12	12	11	11	10	7	6	5	4	4	4	5
	10	10	12	10	9	10	10	8	6	7	6	7	12	14	16	12	15	17	18	19	20	20	19	19	19	18	17	17	14	11	9	8	6	6	6	8
	NE	NE	NE	NE	NNE	NNE	E	E	NE	NNW	NNW	NNW	NW	NW	NW	NW	NW	NW	NW	NW	NW	NW	NW	NW	NW	NW	NW	NW	NW	NNW	NNW	NNW	NNW	N	N	NNE
Shell Crude	5	6	6	6	5	6	6	4	3	3	2	2	5	5	7	8	9	11	11	12	13	13	12	12	12	12	11	11	10	7	6	5	4	4	4	5
	11	10	12	10	9	10	10	9	7	8	6	7	12	15	16	12	14	17	17	18	19	19	19	19	19	18	17	17	14	11	9	8	7	7	6	8
	ENE	NE	NE	NE	NNE	ENE	S	NE	SSE	NNW	NNW	NNW	NW	NW	NW	NW	NW	NW	NW	NW	NW	NW	NW	NW	NW	NW	NW	NW	NW	NNW	NNW	NNW	NNW	N	N	NNE
Lynchburg Ferries	6	6	7	6	5	6	6	4	4	3	2	3	5	5	7	8	10	11	11	12	13	13	12	12	12	12	11	11	10	8	6	5	4	4	4	5
	11	10	12	10	10	9	10	10	8	8	6	8	12	15	16	12	14	16	17	18	19	19	19	18	19	18	17	16	14	11	9	8	7	6	6	7
	ENE	NE	NE	NE	NNE	SW	NW	NNE	SSW	NNW	NNW	NNW	NW	NW	NW	NW	NW	NW	NW	NW	NW	NW	NW	NW	NW	NW	NW	NW	NW	NNW	NNW	NNW	NNW	N	N	NNE
Exxon 3	6	6	7	6	6	5	6	5	4	3	2	3	5	5	6	8	10	11	11	12	13	12	12	12	12	12	11	11	10	8	7	6	5	5	4	5
	13	11	12	11	11	9	10	11	9	8	6	8	11	16	16	12	14	16	16	18	19	18	18	18	19	18	17	16	14	12	9	8	7	7	6	7
	ENE	NE	NE	NE	NNE	W	NNW	NNE	N	NNW	NNW	NNW	NW	NW	NW	NW	NW	NW	NW	NW	NW	NW	NW	NW	NW	NW	NW	NW	NW	NNW	NNW	NNW	NNW	N	N	NNE
Morgans Point	8	8	8	7	6	5	6	6	5	3	3	4	5	6	7	9	11	12	12	13	14	13	13	13	12	12	12	12	11	9	8	7	6	6	6	
	15	12	13	12	12	9	10	11	10	8	8	9	11	16	16	12	14	16	17	18	19	19	19	18	18	18	17	15	12	10	9	8	8	8	7	8
	ENE	NE	NE	NE	NNE	W	NNW	NNE	NNW	NNW	NNW	NW	NW	NNW	NW	NW	NW	NW	NW	NW	NW	NW	NW	NW	NW	NW	NW	NW	NW	NNW	NNW	NNW	NNW	N	N	NNE
75/76	10	11	11	11	9	8	8	9	8	6	4	6	7	9	9	11	13	14	15	16	16	15	14	14	13	13	13	12	11	10	9	8	7	7	8	
	16	14	14	14	14	11	11	12	11	9	9	9	11	16	16	12	15	17	18	19	20	19	19	19	19	19	18	17	15	13	11	10	9	9	8	9
	ENE	NE	NE	NE	NNE	SE	NNW	NNE	NNW	NNW	NNW	NNW	NNW	NW	NW	NW	NW	NW	NW	NNW	NW	NW	NW	NW	NW	NW	NW	NW	NNW	NNW	NNW	NNW	NNW	N	N	NNE
63/64	11	11	12	12	11	9	10	10	9	7	6	7	9	11	11	12	14	15	17	18	17	16	15	14	14	14	13	12	13	11	10	10	9	8	8	9
	18	16	13	15	15	12	12	13	11	9	9	9	11	17	17	13	15	17	18	20	20	19	19	19	19	19	17	16	14	13	12	11	10	10	10	10
	ENE	NE	NE	NE	NNE	N	N	SE	NNW	SW	NNW	NNW	NNW	NW	NW	NW	NW	NW	NW	NW	NNW	NW	NW	NW	NW	NW	NW	NW	NNW	NNW	NNW	NNW	N	N	N	NNE
51/52	11	11	10	10	10	9	11	12	10	9	7	8	10	13	12	12	14	15	17	18	18	16	16	15	14	14	13	12	12	10	10	9	9	9	9	
	18	17	14	14	14	11	13	14	12	11	9	10	12	17	17	13	15	17	19	20	20	19	19	19	19	18	17	15	14	13	12	11	11	10	10	11
	E	NE	NE	NNE	NNE	N	NNW	W	NNW	W	NNW	NNW	NNW	NNW	NW	NW	NW	NW	NW	NW	NNW	NW	NW	NW	NW	NW	NW	NW	NW	NNW	NNW	NNW	NNW	N	N	NNE
37/38	12	10	9	10	10	9	12	13	12	10	8	8	10	14	12	12	14	15	17	18	18	17	16	15	15	14	13	12	12	11	10	10	10	9	9	10
	18	18	16	15	13	11	13	15	13	12	10	10	13	17	18	13	16	17	19	20	20	20	19	19	18	18	17	16	14	13	13	12	12	11	11	11
	E	ENE	NE	NE	NNE	NNE	WNW	NNW	NNW	N	NNW	NNW	NNW	NW	NW	NW	NW	NW	NW	NW	NNW	NNW	NW	NW	NW	NW	NW	NW	NNW	NNW	NNW	NNW	NNW	N	N	NNE
25/26	12	11	10	10	10	9	11	12	12	11	8	8	10	13	12	11	13	15	15	16	17	16	16	15	14	14	12	12	11	10	10	10	10	9	9	9
	20	18	18	17	15	12	12	15	14	13	11	10	12	17	19	13	16	18	18	20	20	20	19	19	19	18	18	17	16	14	13	13	12	13	12	12
	E	ENE	ENE	NE	NNE	NNE	NNW	N	NNW	NNW	NNW	NNW	NNW	NW	NW	NW	NW	NW	NW	NW	NNW	NNW	NW	NW	NW	NW	NW	NW	NNW	NNW	NNW	NNW	NNW	N	N	NNE
11/12	14	13	13	12	11	9	9	11	11	11	9	7	9	12	13	12	13	15	16	16	17	16	16	15	14	14	13	12	11	11	11	10	10	10	10	10
	20	19	19	18	17	12	11	14	13	14	11	10	12	17	19	14	16	18	19	20	20	20	19	19	18	18	17	16	15	13	14	13	13	13	12	13
	E	E	ENE	ENE	NE	NE	WNW	N	WNW	NNW	NNW	NNW	NNW	NNW	NW	NW	NW	NW	NW	NNW	NNW	NNW	NW	NW	NW	NW	NW	NW	NNW	NNW	NNW	NNW	NNW	N	N	N
1 & 2 Bravo	17	17	16	16	17	14	11	13	12	13	10	9	10	12	17	14	16	18	19	19	20	19	19	17	16	16	15	15	14	14	14	13	13	12	13	13
	20	20	18	19	19	15	11	13	13	14	11	11	13	16	21	16	18	20	20	21	22	21	21	19	19	19	17	17	16	15	15	14	15	14	14	14
	E	E	ENE	ENE	ENE	NE	NE	N	N	NNW	NNW	NNW	NNW	NNW	NW	NW	NW	NW	NW	NNW	NNW	NNW	NW	NW	NW	NW	NW	NW	NW	NNW	NNW	NNW	NNW	N	N	N

Houston Pilots: sat. 1/21/2023

Forecast Discussion

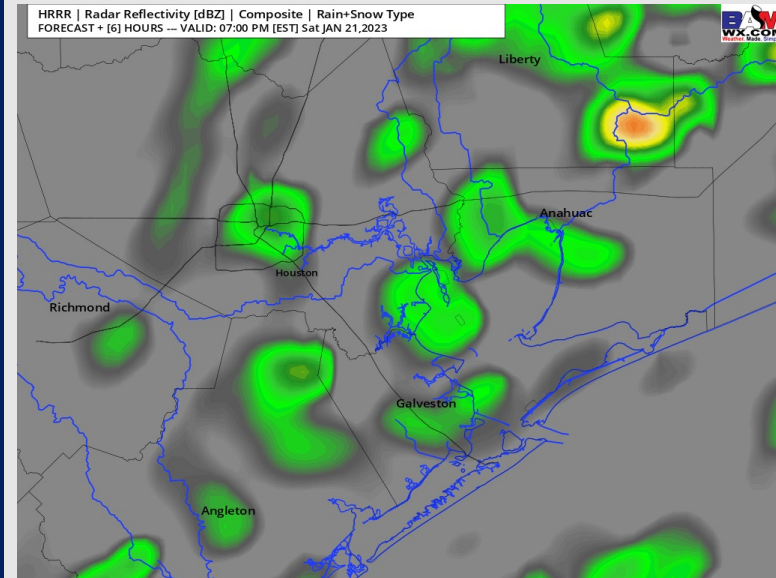
Precip: Scattered showers/thunderstorms chances of 60% expected to continue until 8 PM. From 8-10 PM, chances decrease back down to 30-40%. After 11 PM, anticipating drier conditions into the overnight.

Wind: Sustained winds will continue at 5-10 kts N of Morgan's Point and 10-18 kts S of Morgan's Point the next couple hours. By 4 PM, winds will calm down to 3-8 kts N of Morgan's Point and 8-14 kts S of Morgan's Point for the rest of the day. **Wind gusts of 25+ kts will be possible until 4 PM near the boarding station.**

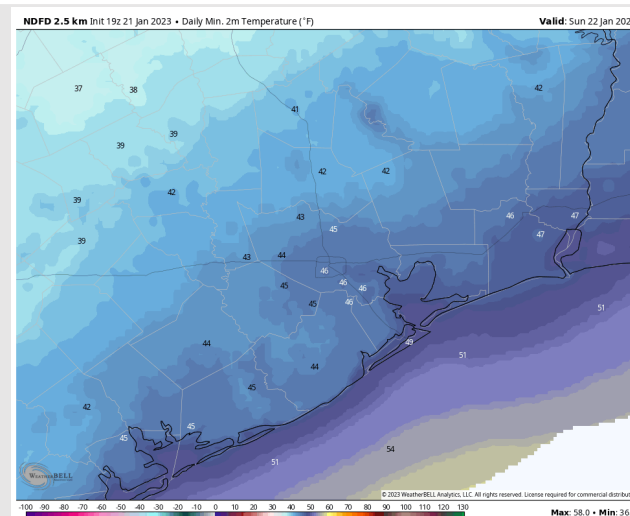
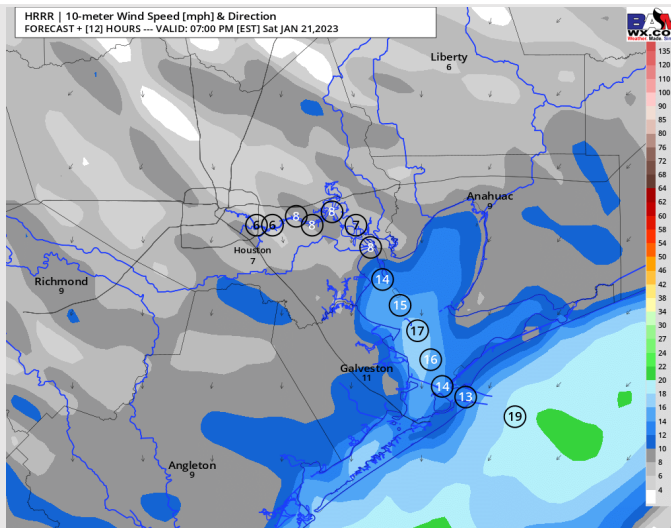
Temps: Low temps Sunday morning I the low to near 50 F at the Boarding Station and in the mid 40s F at all other stations.

Visibility: Not anticipating a fog threat for stations at this time as front continues to work through the area. Pockets of heavy rain my slightly reduce visibility to 4 miles for brief periods of time. Watching for misty conditions after midnight.

Precip Forecast: 6 PM CT



Wind Speed 6 PM CT



Low Temps Sunday AM

Houston Pilots: Sun. 1/22/2023

Forecast Discussion

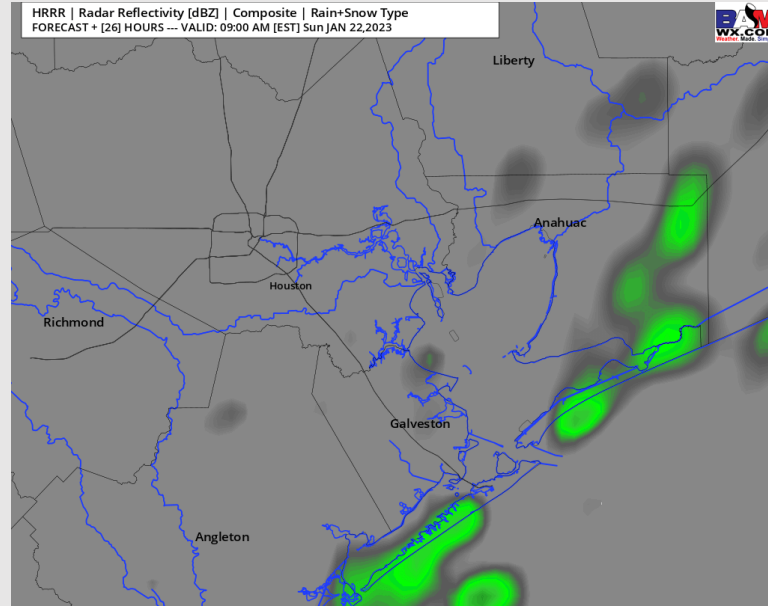
Precip: Anticipating dry conditions during the early AM hours Sunday until around 5 AM CT. After 5 AM CT shower chances increase to 10-20% until 10 AM. After 10 AM anticipating dry conditions the rest of the day.

Wind: Sustained winds out of the NNW throughout the day Sunday. Winds at 4-9 kts for all station until 3 AM. After 3 AM winds pick up to 12-18 kts for all stations until 8 AM. After 8 AM winds gradually decrease back down to 4-9 kts for the rest of the day.

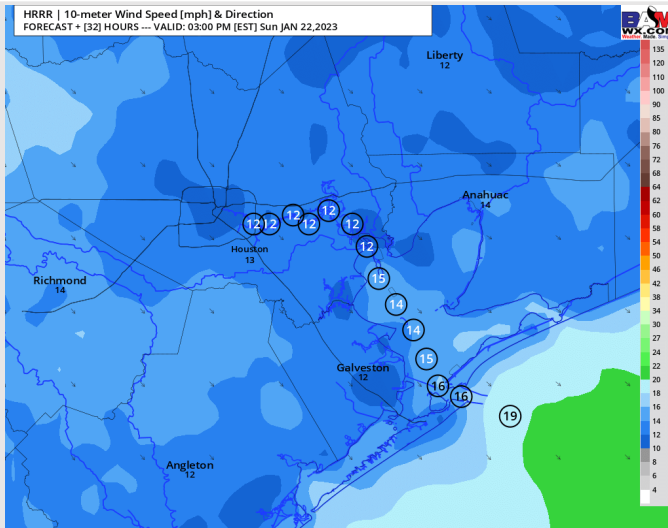
Temps: High temperatures Sunday in the upper 50s for all stations.

Visibility: Visibilities may be reduced due to misty conditions with isolated areas of patchy fog being a risk through the early AM hours (View visibility slide for more details)

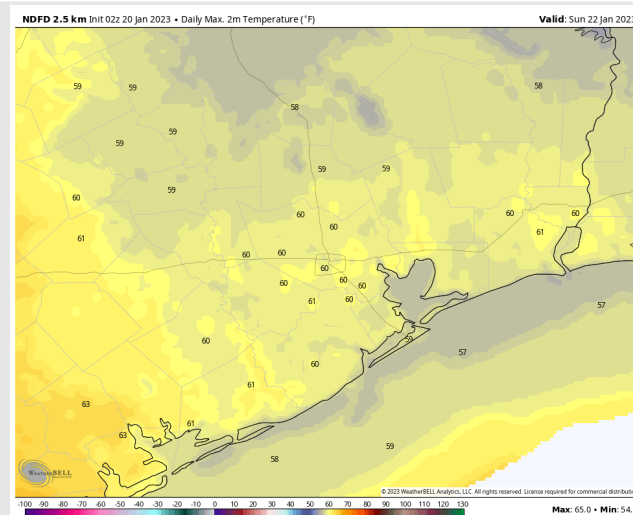
Precip Forecast: 8 AM CT



Wind Speed
2 PM CT



High Temps
Sunday



Houston Pilots: Mon. 1/23/2023

Forecast Discussion

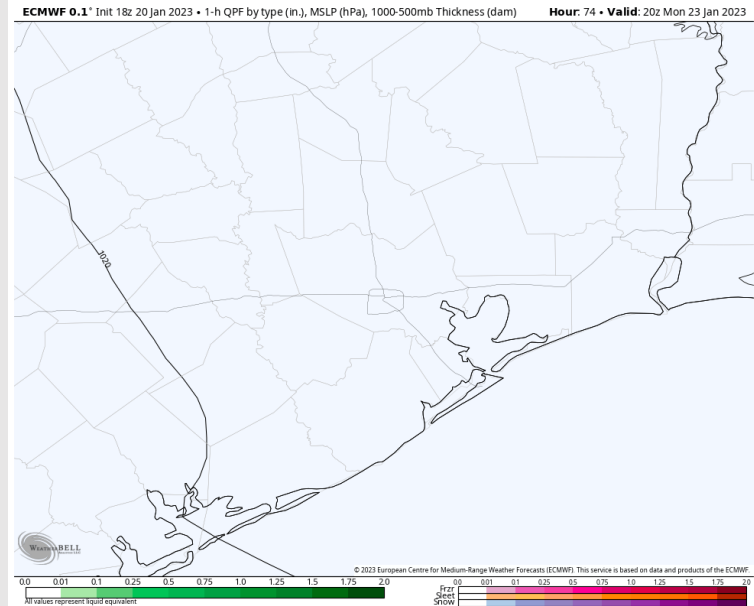
Precip: Anticipating a dry day for Monday. A 10% chance for a sprinkle will be possible at the Boarding Station in the early afternoon.

Wind: Sustained winds from the NNE will slowly veer from the east by the evening, and ESE by midnight. Winds N of Morgan's Point will start out at 5 to 9 kts and S of Morgan's Point will be more elevated at 9 – 16 kts. By 12 PM winds will be at 10 – 16 kts across all stations and remain as such for the rest of the day. Winds at the Boarding Station will be slightly elevated at 14 – 19 kts after 12 PM. **Wind gusts of up to 22 kts will be possible across all stations from the 11 AM – 6 PM timeframe.**

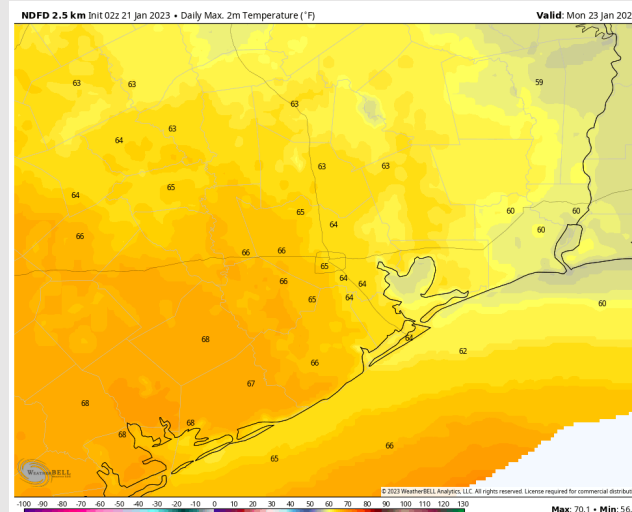
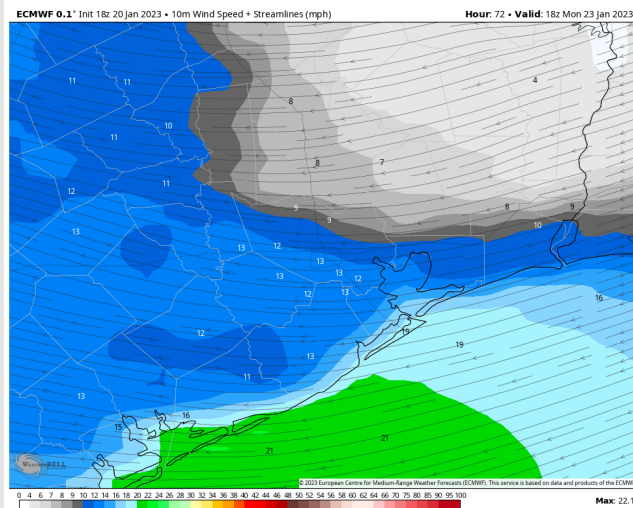
Temps: High temperatures Monday will be in the mid to lower 60s F across all stations.

Visibility: Not anticipating any visibility concerns at this time.

Precip Forecast: 2 PM CT

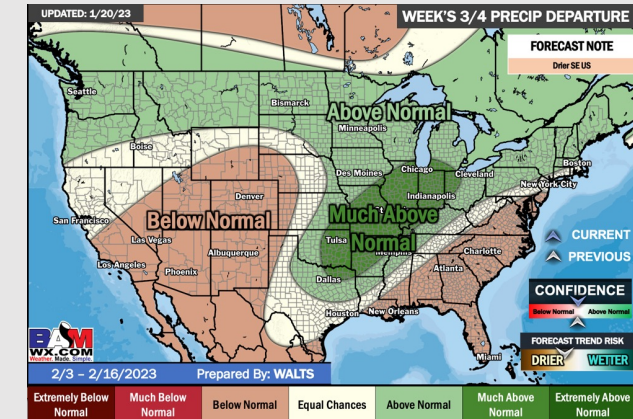
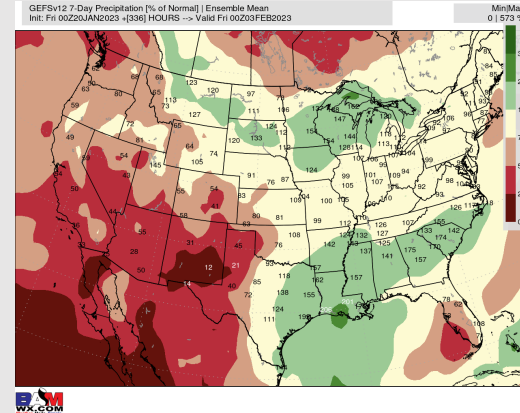
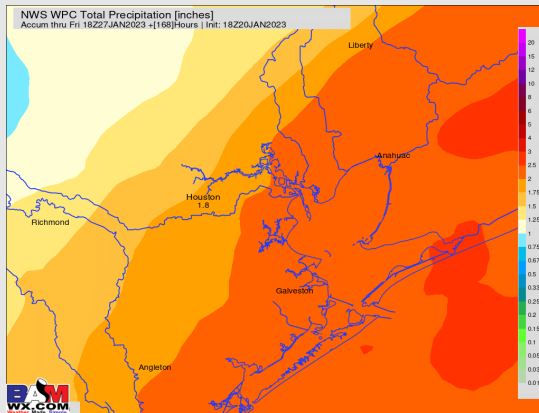
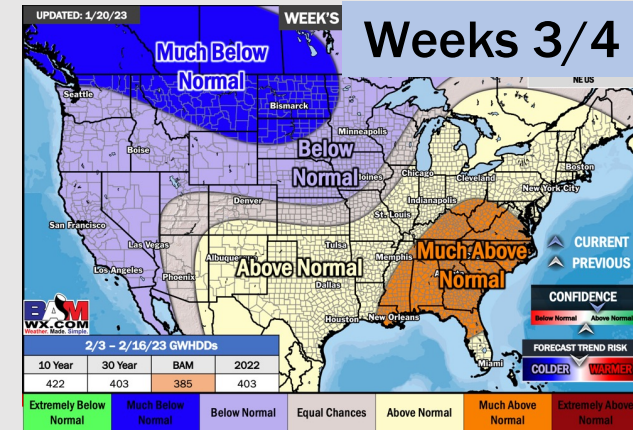
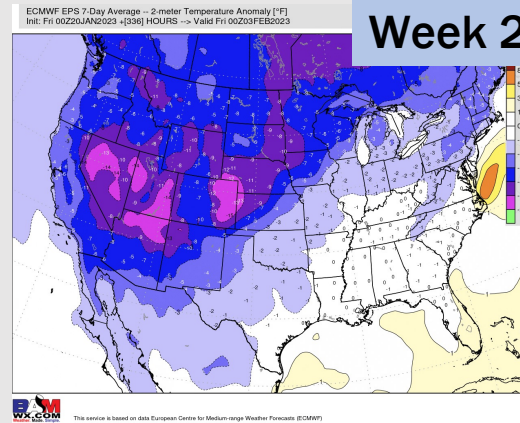
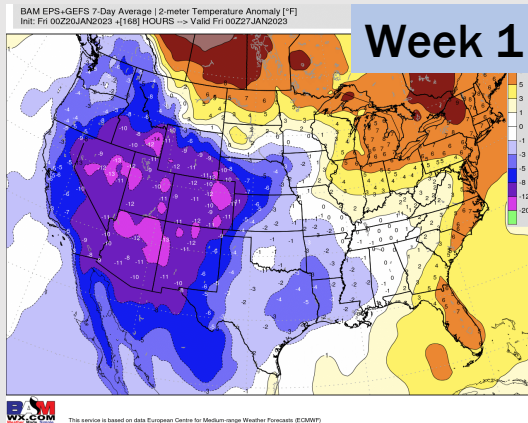


Wind Speed
12 PM CT



High Temps
Monday

Houston Pilots: 1/21/23



- Next rain chances come Saturday and the following Tuesday will leading to a slightly more active pattern vs average. Temps will be below normal.
- Above normal precipitation and near normal temperatures are expected for the 2 week timeframe.
- Near normal precipitation chances and above normal temperatures expected in the weeks 3/4 timeframe.