

Houston Pilots Forecast Package



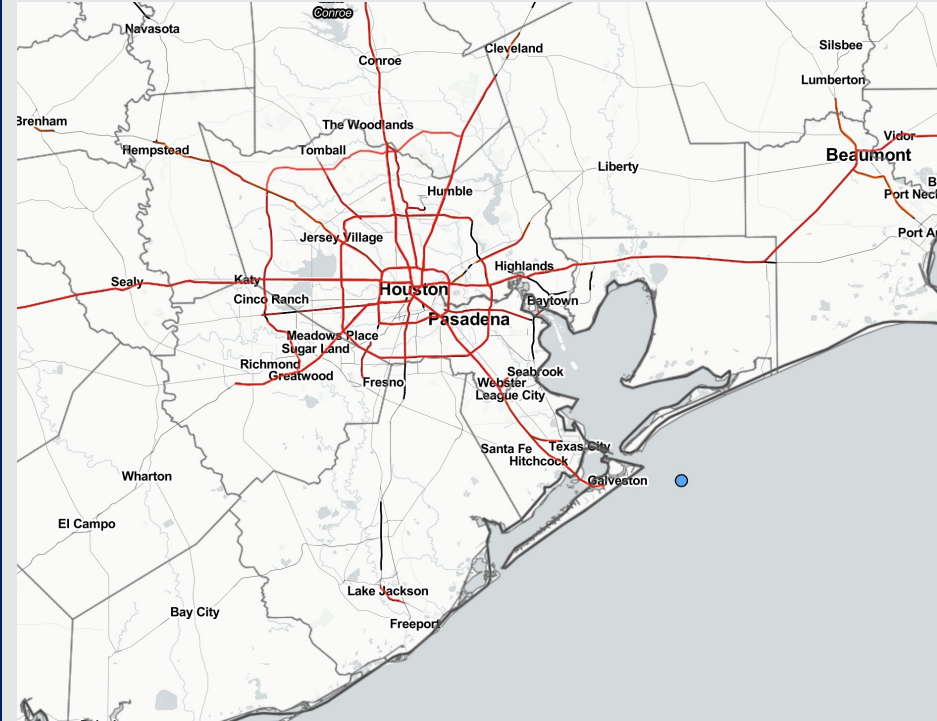
Updated: 2:10 PM CT

Saturday, January 14, 2023

Forecaster: Will Danby

Weather Headlines

- Fog threats will not be present for the remainder of the weekend; next potential threat will be on Monday morning, however there is low confidence fog will initialize.
- Anticipating dry conditions over the next few days with the next shower/storm chance coming Monday afternoon.
- Looking at a windy next few days with the risk of the Boarding Station seeing gusts 20+ knots SAT/SUN/MON.
- **Worth watching Monday (1/16) for increased risks of wave heights reaching at/over 5 feet.**



Radar/NWS Alerts: 2:10 PM CT



As always, please do not hesitate to reach out to us with any forecast questions via the chat option on the Weather Porthole or our on-call number, **(317)-560-8122** press 1 for forecast questions.

Houston Pilots Extended Range Visibility Report



Tuesday 1/17/23

Confidence remains low, but fog will be possible for Tuesday as there is a shallow layer of low-level moisture



Wednesday 1/18/23

Winds out of the SE in the morning will shift out of the NW by the evening.



Thursday 1/19/23

Fog is not expected for Thursday as winds will be out of the NW from the frontal passage with dry air.



Chance for Reduced Visibility

Tuesday AM	Possible
Tuesday PM	Possible
Wednesday AM	Possible
Wednesday PM	Unlikely
Thursday AM	Unlikely
Thursday PM	Unlikely

Houston Pilots Wind Report



Confidence



Example

Sustained wind 13 Knots
Gusts 18 Knots
Wind from the N

WS: 13
G:18
N

Time Knots	Sat 1pm	Sat 2pm	Sat 3pm	Sat 4pm	Sat 5pm	Sat 6pm	Sat 7pm	Sat 8pm	Sat 9pm	Sat 10pm	Sat 11pm	Sun 12am	Sun 1am	Sun 2am	Sun 3am	Sun 4am	Sun 5am	Sun 6am	Sun 7am	Sun 8am	Sun 9am	Sun 10am	Sun 11am	Sun 12pm	Sun 1pm	Sun 2pm	Sun 3pm	Sun 4pm	Sun 5pm	Sun 6pm	Sun 7pm	Sun 8pm	Sun 9pm	Sun 10pm	Sun 11pm	Mon 12am	
610 Bridge	5	7	7	8	7	6	6	6	5	5	4	4	4	3	3	5	5	6	6	6	8	9	11	11	12	13	13	13	13	11	10	10	9	10	10	10	
	6	8	9	10	11	13	13	12	12	12	11	11	12	11	10	9	9	10	10	11	13	15	18	18	19	20	21	20	20	18	19	18	16	17	17	16	
	SE	SE	SE	SE	SE	SE	SE	SE	SE	SE	SE	SE	SE	SE	SSE	SSE	SSE	SSE	SSE	SSE	SSE	SSE	SSE	SSE	S	S	S	SSE	SSE	SSE	SSE	SSE	SSE	SSE	S	S	S
Kinder 1	5	7	7	8	7	6	6	6	5	5	4	4	4	3	3	5	6	6	7	6	8	9	11	11	12	13	13	13	13	11	10	10	10	10	9		
	7	9	9	11	11	13	13	12	12	12	12	11	12	11	10	9	9	10	11	11	13	15	17	18	19	20	21	20	20	18	19	17	16	17	16	16	
	SE	SE	SE	SE	SE	SE	SE	SE	ESE	SE	SE	SE	SE	SE	SSE	SSE	SSE	SSE	SSE	SSE	SSE	SSE	SSE	S	S	S	SSE	SSE	SSE	SSE	SSE	SSE	SSE	S	S	S	
Greens Bayou	6	8	8	8	8	6	5	5	5	5	4	4	4	3	3	5	6	6	7	6	8	9	11	12	12	13	13	13	13	10	10	10	10	9			
	7	10	10	11	12	14	13	12	12	12	12	11	11	11	11	9	10	10	11	11	13	15	17	17	19	20	20	20	19	18	18	17	16	17	16	16	
	SE	SE	SE	SE	SE	SE	SE	ESE	SE	SE	ESE	SE	SE	SE	SSE	SSE	SSE	SSE	SSE	SSE	SSE	SSE	SSE	SSE	SSE	SSE	SSE	SSE	SSE	SSE	SSE	SSE	SSE	SSE	S	S	S
Shell Crude	6	8	8	8	8	6	5	5	5	4	4	4	4	4	4	5	6	6	7	7	8	10	11	12	12	13	13	13	13	10	10	10	10	10	10		
	8	10	10	12	12	14	12	12	11	12	12	11	11	11	11	9	10	11	11	11	13	15	17	17	18	19	20	20	19	17	18	17	16	17	16	16	
	SE	SE	SE	SE	SE	SE	SE	SE	ESE	SE	SE	SE	SE	SE	SSE	SSE	SSE	SSE	SSE	SSE	SSE	SSE	SSE	SSE	SSE	SSE	SSE	SSE	SSE	SSE	SSE	SSE	SSE	SSE	S	S	S
Lynchburg Ferries	7	8	8	9	8	5	5	5	5	4	4	4	4	4	4	6	6	6	7	7	9	10	11	12	12	13	13	13	13	11	11	10	10	11	10	10	
	8	10	11	12	13	14	12	12	11	12	13	11	11	11	12	10	10	11	11	12	13	15	17	18	18	19	20	19	19	17	18	17	16	17	16	16	
	SE	SE	SE	SE	SE	SE	SE	ESE	SE	ESE	SE	ESE	SE	SE	SE	SSE	SSE	SSE	SSE	SSE	SSE	SSE	SSE	SSE	SSE	SSE	SSE	SSE	SSE	SSE	SSE	SSE	SSE	SSE	S	S	S
Exxon 3	7	8	8	8	7	5	5	5	5	5	5	4	4	4	5	6	7	7	7	8	9	10	11	12	12	13	13	13	12	11	11	10	10	11	10	10	
	9	11	11	12	13	14	11	11	11	13	13	12	12	11	12	11	11	11	11	12	12	13	15	17	18	18	19	19	18	17	17	16	17	16	17	16	
	SE	SE	SE	SE	SE	SE	ESE	ESE	SE	SE	SE	SE	SE	SE	SSE	SSE	SSE	SSE	SSE	SSE	SSE	SSE	SSE	SSE	SSE	SSE	SSE	SSE	SSE	SSE	SSE	SSE	SSE	SSE	S	S	S
Morgans Point	7	7	9	9	8	7	7	7	7	7	6	6	5	5	7	8	8	8	8	9	10	10	11	12	12	13	13	13	12	11	11	11	11	11	11	11	
	9	11	12	13	13	14	12	11	12	14	13	12	13	12	11	12	12	12	13	13	13	14	15	17	17	18	18	18	17	17	17	17	17	17	17	17	16
	SE	SE	SE	SE	SE	SE	ESE	ESE	SE	SE	SE	SE	SE	SE	SSE	SSE	SSE	SSE	SSE	SSE	SSE	SSE	SSE	SSE	SSE	SSE	SSE	SSE	SSE	SSE	SSE	SSE	SSE	SSE	SSE	S	S
75/76	7	6	9	9	9	9	9	9	10	10	9	8	8	7	6	9	9	9	10	10	11	11	12	13	13	13	13	13	12	12	12	13	12	13	12	12	
	9	11	13	13	13	14	13	12	14	15	13	13	14	13	11	13	13	13	14	14	15	16	17	17	16	17	18	17	17	17	17	18	18	19	18	18	
	ESE	SE	ESE	ESE	SE	ESE	ESE	SE	SE	SE	SE	SE	SE	SE	SSE	SSE	SSE	SSE	SSE	SSE	SSE	SSE	SSE	SSE	SSE	SSE	SSE	SSE	SSE	SSE	SSE	SSE	SSE	SSE	S	S	S
63/64	6	6	10	9	8	9	9	9	10	10	8	8	8	7	7	10	10	10	11	11	11	11	12	13	13	13	13	12	13	13	13	13	13	13	13	13	
	9	10	13	13	13	13	14	13	14	15	13	14	14	13	11	14	14	14	15	15	15	16	16	16	16	16	17	17	17	17	17	18	18	20	19	18	
	ESE	ESE	ESE	ESE	ESE	ESE	ESE	SE	SE	SE	SE	SE	SE	SE	SSE	SSE	SSE	SSE	SSE	SSE	SSE	SSE	SSE	SSE	SSE	SSE	SSE	SSE	SSE	SSE	SSE	SSE	SSE	SSE	S	S	S
51/52	6	8	10	9	8	8	9	9	9	9	7	8	9	7	8	10	10	11	11	12	12	12	12	13	13	13	13	13	13	14	14	14	14	14	14	14	
	8	11	12	12	12	13	14	14	14	14	14	13	14	15	13	13	15	15	15	15	16	16	16	16	16	16	17	17	17	17	18	19	18	20	19	19	
	ESE	ESE	ESE	ESE	ESE	ESE	ESE	ESE	SE	SE	SE	SE	SE	SE	SSE	SSE	SSE	SSE	SSE	SSE	SSE	SSE	SSE	SSE	SSE	SSE	SSE	SSE	SSE	SSE	SSE	SSE	SSE	SSE	S	S	S
37/38	6	9	10	9	9	8	9	9	9	8	7	8	8	7	7	11	11	11	11	12	12	12	12	13	13	13	13	13	13	14	14	14	15	14	14	14	
	8	10	12	11	12	12	14	14	15	15	16	16	16	16	15	13	15	16	16	16	16	16	16	16	16	16	17	17	17	17	18	19	19	20	20	20	
	ESE	SE	SE	SE	ESE	ESE	ESE	SE	SE	SE	SE	SE	SE	SE	SSE	SSE	SSE	SSE	SSE	SSE	SSE	SSE	SSE	SSE	SSE	SSE	SSE	SSE	SSE	SSE	SSE	SSE	SSE	S	S	S	S
25/26	7	9	9	9	9	8	9	9	9	8	7	8	8	8	6	11	11	11	11	12	12	13	13	13	13	13	13	13	13	14	14	15	15	15	15		
	8	10	11	11	11	12	13	14	15	16	16	18	18	18	15	15	15	16	16	16	16	16	16	16	16	16	17	17	17	17	18	20	20	20	20	20	
	SE	SE	SE	SE	SE	ESE	ESE	SE	SE	SSE	SSE	SSE	SSE	SSE	SSE	SSE	SSE	SSE	SSE	SSE	SSE	SSE	SSE	SSE	SSE	SSE	SSE	SSE	SSE	SSE	SSE	SSE	SSE	S	S	S	S
11/12	8	9	9	9	9	9	10	10	10	10	10	10	11	10	8	12	12	12	12	12	13	13	13	13	13	13	13	13	14	15	15	15	15	15	15		
	8	10	10	11	12	12	13	14	15	16	17	18	19	19	16	15	16	16	16	16	17	17	17	16	16	16	17	17	17	18	19	20	20	21	21	21	
	SE	ESE	SE	SE	ESE	ESE	SE	SE	SE	SSE	SSE	SSE	SSE	SSE	SSE	SSE	SSE	SSE	SSE	SSE	SSE	SSE	SSE	SSE	SSE	SSE	SSE	SSE	SSE	SSE	SSE	SSE	SSE	S	S	S	S
1 & 2 Bravo	9	9	9	10	11	11	12	12	13	14	14	14	15	14	10	13	13	13	13	14	14	14	14	14	14	14	13	13	14	14	15	15	16	16	16	16	
	9	9	10	10	11	12	13	15	16	17	17	18	20	20	17	17	17	17	17	17	17	18	18	17	16	17	18	18	19	21	21	22	22	22	22		
	ESE	ESE	ESE	ESE	ESE	SE	SE	SE	SE	SSE	SSE	SSE	SSE	SSE	SSE	SSE	SSE	SSE	SSE	SSE	SSE	SSE	SSE	SSE	SSE	SSE	SSE	SSE	SSE	SSE	SSE	SSE	SSE	S	S	S	S

Houston Pilots: Sat. 1/14/2023



Forecast Discussion

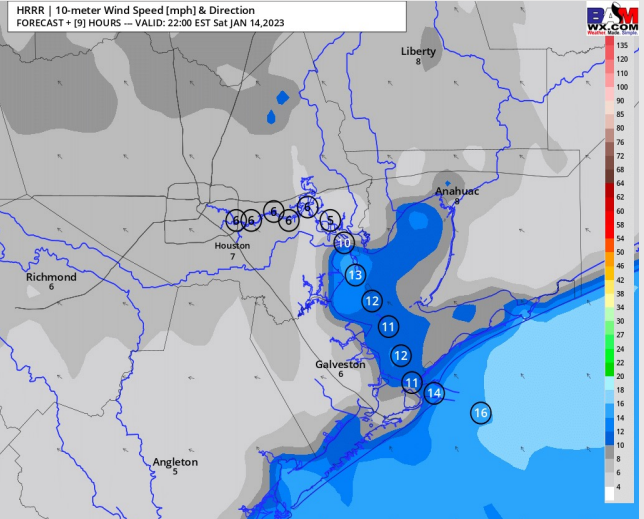
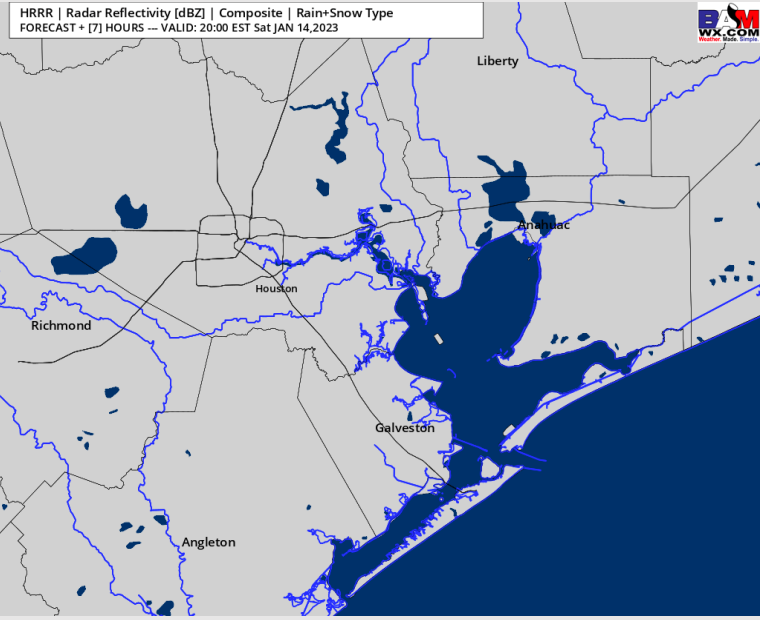
Precip Forecast: 8 PM CT

Precip: Anticipating dry conditions for this afternoon and the overnight.

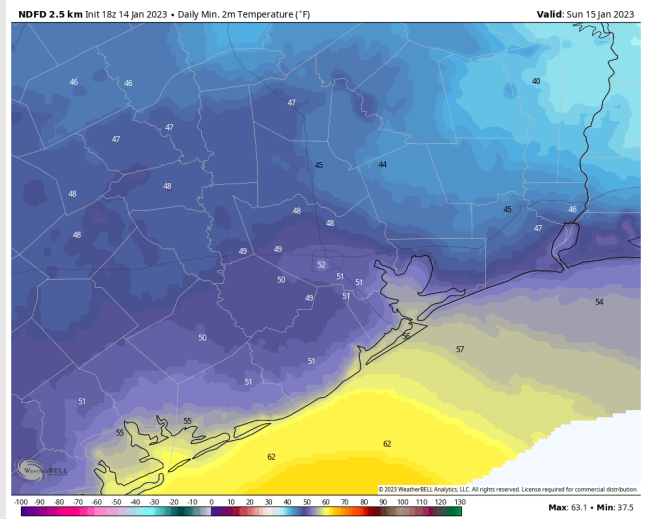
Wind: Winds will be from the SE for this afternoon and evening at 7 – 11 kts for all stations except the Boarding Station, where winds will be more elevated at 10 – 16 kts. Winds North of Morgan’s point will be 3 – 7 kts after 7 PM. Wind gusts of up to 20 kts will be possible in the evening at the Boarding Station.

Temps: Low temperatures Sunday morning will be in the low 50s F north of Morgan’s Point and in the mid 50s F south of Morgan’s Point

Visibility: Although winds generally out of the S/SE, not favoring any sea fog risks at this time due to lack of low-level moisture.



Wind Speed
10 PM CT



Low temps
Sunday AM

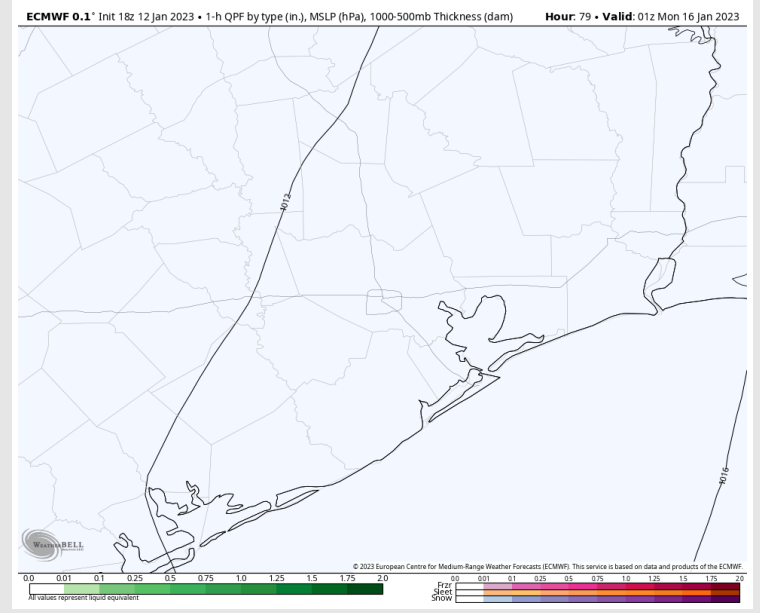
Houston Pilots: Sun. 1/15/2023



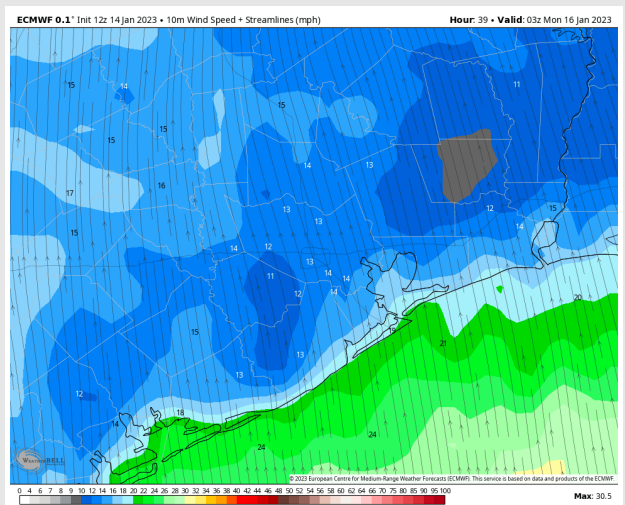
Forecast Discussion

- Precip:** Favoring dry conditions throughout the day Sunday.
- Wind:** Sustained winds out of the SSE throughout the day Sunday. Winds north of Morgan's point will start out at 5 – 7 kts and 10 – 15 kts south of Morgan's point. Winds will gradually increase to 11 – 18 kts across all stations by the evening hours and will remain as such for the rest of the night. **Wind gusts 20 - 25 kts will be possible for all stations in the evening hours on Sunday.**
- Temps:** High temperatures Sunday in the near 70s F for all stations.
- Visibility:** Although winds generally out of the S/SE, not favoring any sea fog risks at this time due to lack of low level moisture.

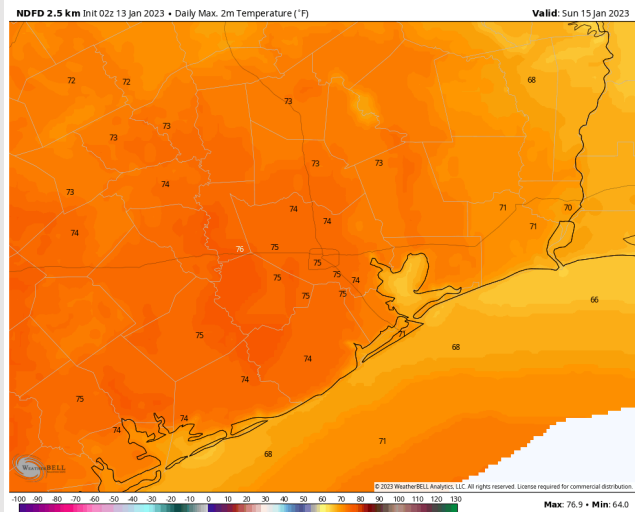
Precip Forecast: 7 PM CT



Wind Speed
9 PM CT



High Temps
Sunday



Houston Pilots: Mon. 1/16/2023



Forecast Discussion

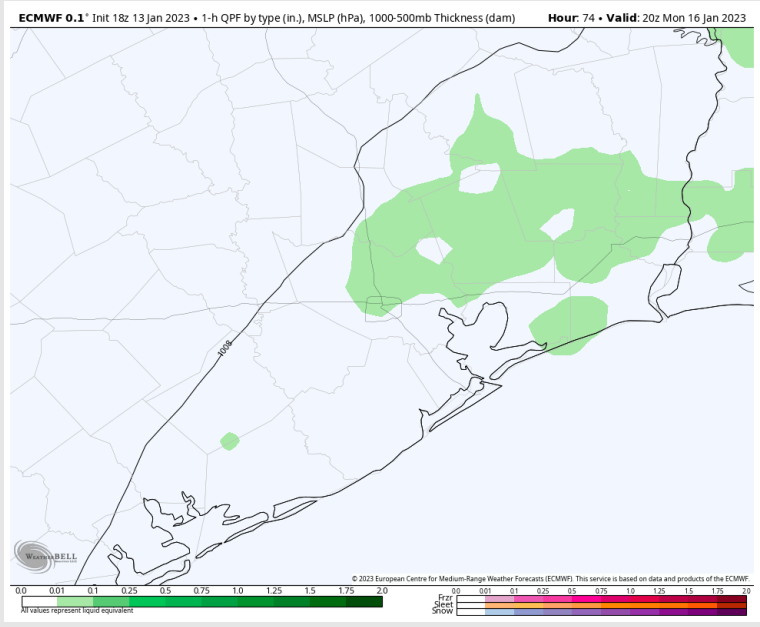
Precip: Anticipating dry conditions for the AM hours, with a 30% chance for scattered showers/storms during the 12 – 5 PM hours mainly north of Morgan’s Point.

Wind: Sustained Southerly winds for Monday with slight SSW veering during the afternoon. Winds will start out at 8 – 12 kts N of Morgan’s point and 12 – 17 kts S of Morgan’s point until 11 AM. From 11 AM – 5 PM winds will be at 12 – 17 kts across all stations and then will diminish after 5 PM N of Morgan’s Point to 6 – 10 kts. **Wind gusts could range between 22 – 26 kts between 10 AM – 4 PM.**

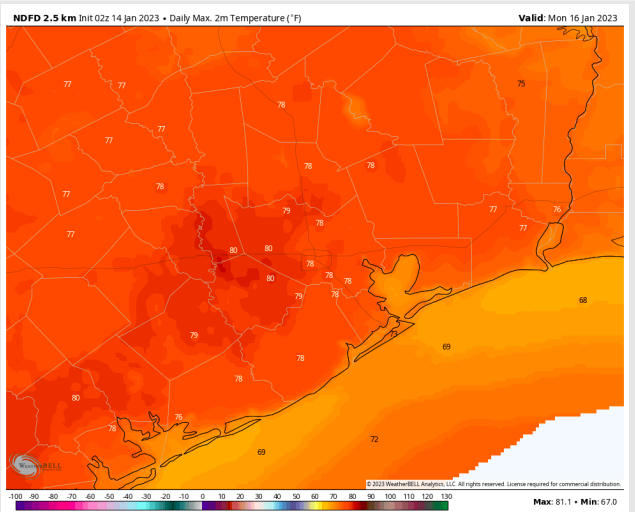
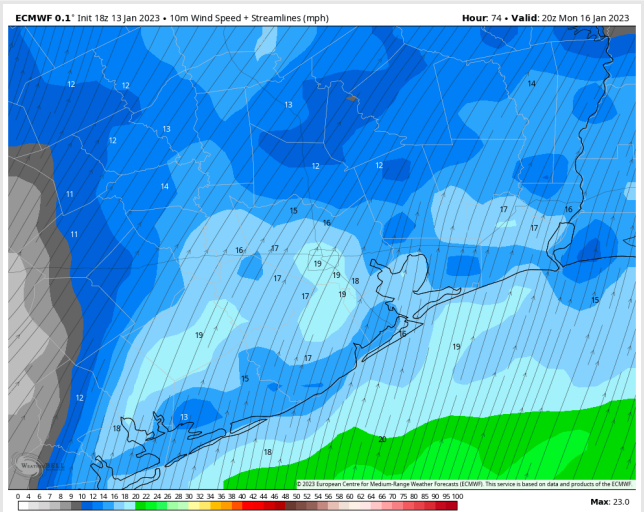
Temps: High temperatures Monday will be in the upper 70s F north of Morgan’s Point and in the mid to lower 70s F south of Morgan’s Point.

Visibility: A low end risk for sea fog will be possible Monday AM and PM, but parameters are borderline. More details to come in forthcoming updates.

Precip Forecast: 2 PM CT

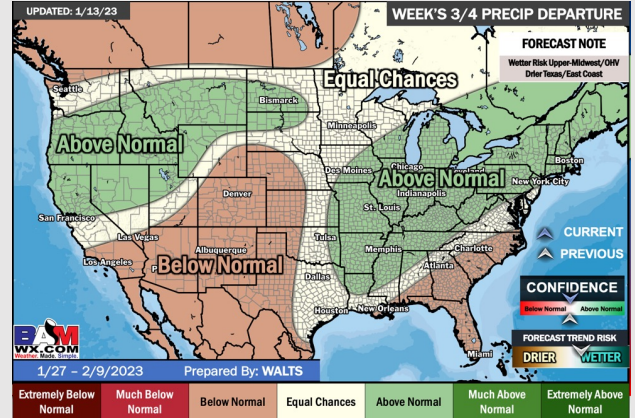
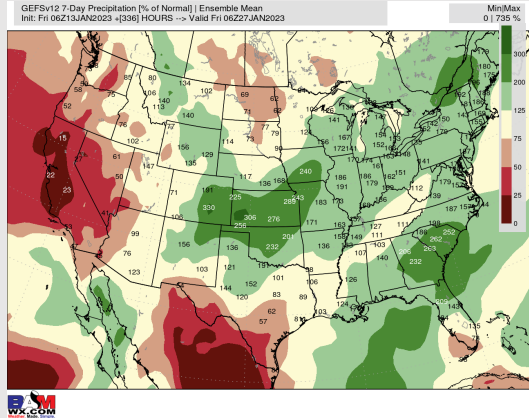
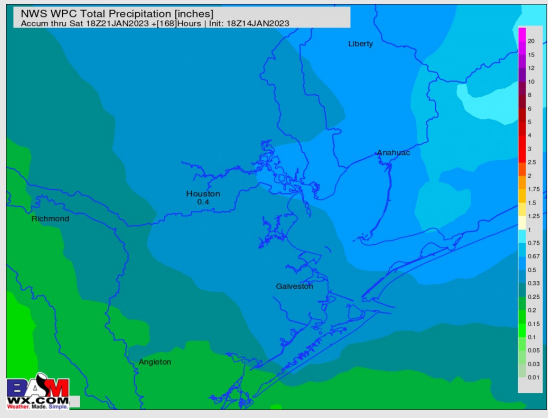
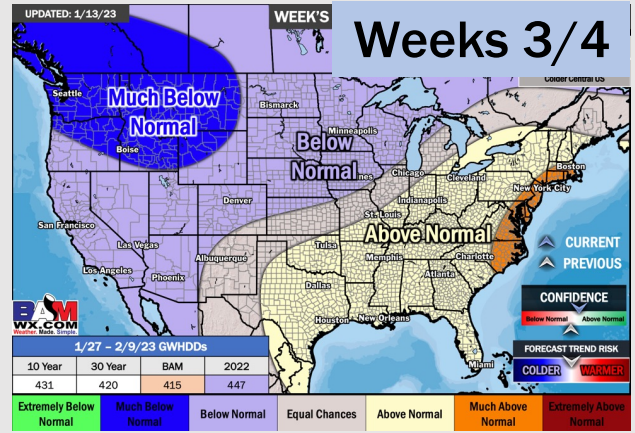
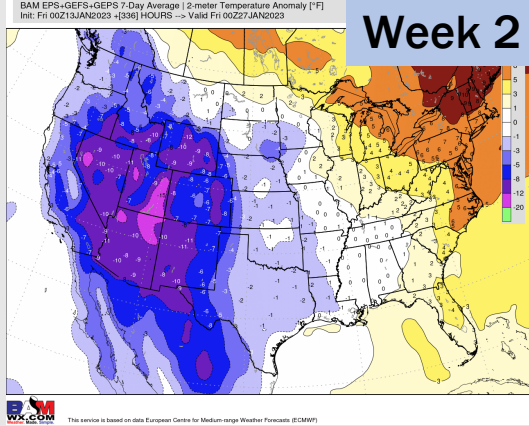
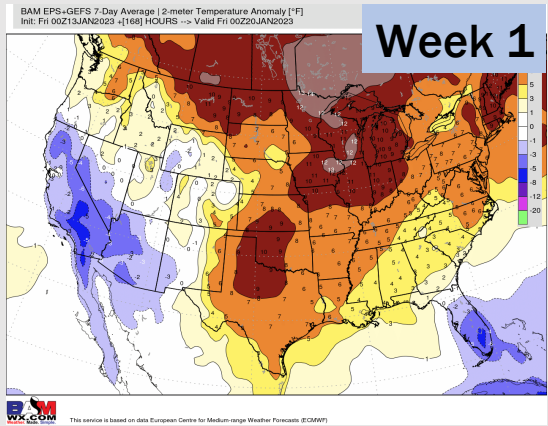


Wind Speed
2 PM CT



High Temps
Monday

Houston Pilots: 1/14/23



- A generally drier pattern with the best chances for precip moving forward coming Monday, and again next Wed/Thu. Temps will continue to remain above average.
- Week 2 precipitation is expected to be near normal for the week 2 timeframe. Temperatures are to be near normal.
- Near normal precipitation chances and above normal temperatures expected in the weeks 3/4 timeframe.