

# Houston Pilots Forecast Package



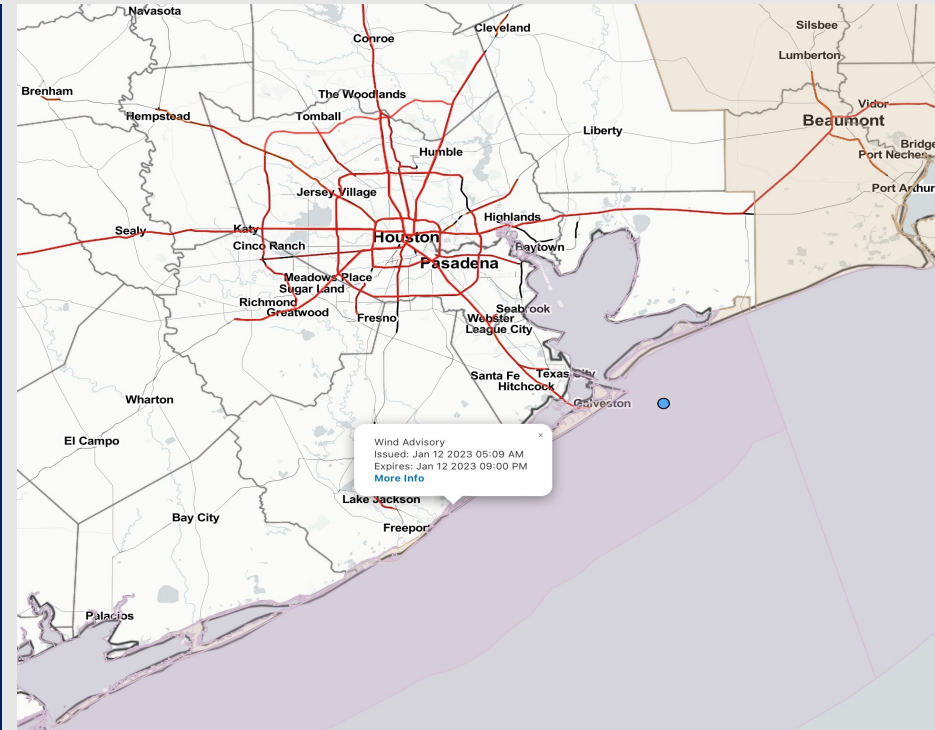
Updated: 2:00 PM CT

Thursday, January 12, 2023

Forecaster: Alyssa McClung

## Weather Headlines

- Not anticipating a fog threat for the rest of the day today and tomorrow.
- Anticipating dry conditions the next few days.
- Looking at a windy next few days with the risk of the Boarding Station seeing gusts 20+ knots. **Winds out of the N/NW through late SAT AM may lead to a low end risk for lower water levels in the bay.**
- **Worth watching Monday (1/16) for increased risks of wave heights reaching at/over 5 feet.**



**Radar/NWS Alerts: 2:00 PM CT**



As always, please do not hesitate to reach out to us with any forecast questions via the chat option on the Weather Porthole or our on-call number, **(317)-560-8122** press 1 for forecast questions.

# Houston Pilots Extended Range Visibility Report



## Sunday 1/15/23

North Winds will be from the S to SSW on Sunday, but the low levels of the atmosphere look too dry to support fog. This will need to be monitored.



## Monday 1/16/23

Southerly winds possible for Monday with more low-level moisture available will make fog a possibility.



## Tuesday 1/17/23

Confidence remains low, but not favoring fog at this time.



## Chance for Reduced Visibility

Sunday AM	Unlikely
Sunday PM	Unlikely
Monday AM	Possible
Monday PM	Possible
Tuesday AM	Unlikely
Tuesday PM	Unlikely



# Houston Pilots Wind Report



**Example**

Sustained wind 13 Knots

Gusts 18 Knots

Wind from the N

WS: 13

G:18

N

Time Knots	Thu 11am	Thu 12pm	Thu 1pm	Thu 2pm	Thu 3pm	Thu 4pm	Thu 5pm	Thu 6pm	Thu 7pm	Thu 8pm	Thu 9pm	Thu 10pm	Thu 11pm	Fri 12am	Fri 1am	Fri 2am	Fri 3am	Fri 4am	Fri 5am	Fri 6am	Fri 7am	Fri 8am	Fri 9am	Fri 10am	Fri 11am	Fri 12pm	Fri 1pm	Fri 2pm	Fri 3pm	Fri 4pm	Fri 5pm	Fri 6pm	Fri 7pm	Fri 8pm	Fri 9pm	Fri 10pm	
610 Bridge	11	12	13	14	14	12	9	8	9	8	6	6	7	7	8	9	8	8	8	8	8	7	9	8	9	8	9	9	9	9	8	6	5	5	4	4	
	18	19	21	23	23	24	22	23	25	24	23	21	22	23	15	16	16	17	15	15	14	14	13	13	13	14	14	14	14	14	13	10	9	9	8	8	
Kinder 1	11	12	13	15	14	13	10	8	10	8	7	6	6	7	8	9	8	8	8	8	8	7	9	8	9	8	9	9	9	9	6	5	5	5	4	4	
	18	19	21	23	23	24	22	23	25	23	24	21	22	23	15	15	16	17	16	15	14	14	13	13	14	14	14	14	14	13	10	9	9	8	8	8	
Greens Bayou	11	13	14	15	14	13	10	8	10	7	8	6	7	8	8	9	8	8	8	8	8	7	9	9	9	9	9	9	9	8	6	5	5	5	4	4	
	18	19	21	23	23	24	22	24	25	24	25	22	22	24	15	15	16	17	16	15	14	14	13	14	14	14	14	14	14	12	10	9	8	8	8	8	
Shell Crude	12	13	14	15	14	13	10	8	10	7	9	7	7	8	9	9	8	9	9	8	9	8	7	9	9	9	9	9	9	8	6	5	5	5	4	4	
	18	19	21	23	23	24	23	24	24	25	25	22	23	24	15	16	16	17	16	15	15	15	14	14	14	14	14	14	14	13	10	9	9	8	8	8	
Lynchburg Ferries	12	12	14	14	14	13	12	10	8	9	8	9	6	7	8	8	9	9	9	9	8	8	9	9	9	9	9	9	9	8	6	5	5	5	5	5	
	18	19	21	23	23	23	24	23	24	22	26	25	22	22	23	15	16	16	17	17	15	15	15	14	14	14	14	15	14	14	12	10	9	8	8	8	8
Exxon 3	12	12	13	14	14	12	11	9	6	8	8	9	6	7	8	9	9	9	9	9	9	8	10	9	9	9	9	9	9	8	6	5	5	5	5	5	
	20	19	21	23	23	23	24	23	24	22	27	25	22	22	23	16	17	17	18	18	16	16	15	14	14	15	14	14	13	10	9	9	8	7	7	7	
Morgans Point	12	12	13	13	12	11	10	7	10	10	10	9	9	11	10	11	11	11	10	10	10	10	10	10	9	9	9	9	9	8	7	6	6	6	6	5	5
	21	20	21	23	23	22	24	24	23	23	28	26	23	24	26	19	19	19	20	20	18	17	16	15	15	15	14	15	14	13	12	11	10	10	9	9	
75/76	13	13	13	13	12	11	11	12	11	14	17	15	15	16	16	13	14	13	14	13	13	12	11	10	10	10	10	10	10	9	8	8	7	7	7	7	
	22	21	21	23	22	22	25	23	25	29	27	25	26	28	22	22	22	22	22	20	19	17	16	15	15	15	15	15	14	13	13	13	12	12	12	12	
63/64	14	14	13	13	12	11	11	14	16	16	20	18	17	19	15	15	15	15	15	15	14	14	13	11	11	11	11	11	10	10	9	9	9	9	9	9	
	23	23	21	23	23	22	24	24	25	26	30	27	25	27	28	23	23	23	23	23	21	20	18	16	15	15	15	15	15	14	14	14	14	14	14	13	13
51/52	15	14	14	12	14	10	11	14	18	15	20	18	18	20	16	16	16	16	15	14	13	12	11	11	11	11	11	11	10	10	10	10	10	10	10	10	10
	24	24	23	23	24	22	23	23	28	27	30	27	25	27	27	24	24	24	24	24	22	20	18	17	16	15	15	15	15	15	15	15	15	15	14	14	14
37/38	15	14	15	13	15	12	13	14	19	16	21	19	19	20	21	17	17	17	17	16	15	14	13	12	11	11	11	11	11	11	11	11	10	10	10	10	10
	25	23	24	23	25	23	24	24	30	27	30	27	25	26	27	24	24	24	24	23	21	19	17	16	16	15	15	16	16	15	15	15	15	15	15	15	14
25/26	15	14	14	14	15	14	15	19	18	21	19	18	19	21	18	18	18	18	17	16	15	14	13	12	12	12	12	12	12	11	11	11	11	11	11	11	11
	26	23	24	23	26	24	25	26	31	29	30	27	24	26	27	24	25	25	25	24	23	21	19	17	16	16	16	16	16	15	15	15	15	15	15	15	14
11/12	16	15	16	16	16	14	14	16	20	20	19	18	16	18	19	18	18	18	18	18	17	16	15	14	13	12	12	12	12	12	12	12	12	11	11	11	11
	27	24	26	24	26	25	25	28	33	31	29	27	24	26	28	25	25	25	25	23	21	19	17	16	16	16	16	16	16	16	15	16	15	15	15	14	14
1 & 2 Bravo	21	20	20	20	19	19	20	22	24	26	22	21	21	22	24	20	20	20	20	20	19	17	16	14	13	12	12	13	13	13	13	13	13	13	13	12	12
	28	25	28	27	27	26	27	31	34	33	28	28	27	29	31	27	26	26	26	26	24	22	20	18	17	16	16	16	17	17	17	17	17	17	16	16	16

# Houston Pilots: Thur. 1/12/2023



## Forecast Discussion

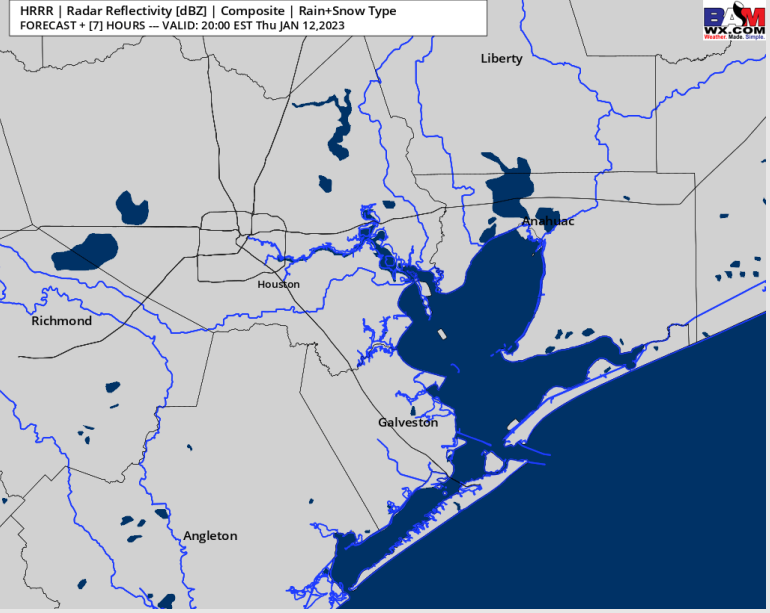
**Precip:** Favoring dry conditions the rest of the day.

**Wind:** Sustained winds out of the NW this afternoon. Winds north of Morgan's Point will remain 10 – 15 kts (even after the front pushes through) and south of Morgan's point will be more elevated at 20 – 25 kts. After 6 PM, winds will begin to calm a bit to 8 – 13 kts for all stations north of 11/12, still out of the NW. **Wind gusts will be highest near Boarding Station, where gusts could reach 30-35 kts through the evening.**

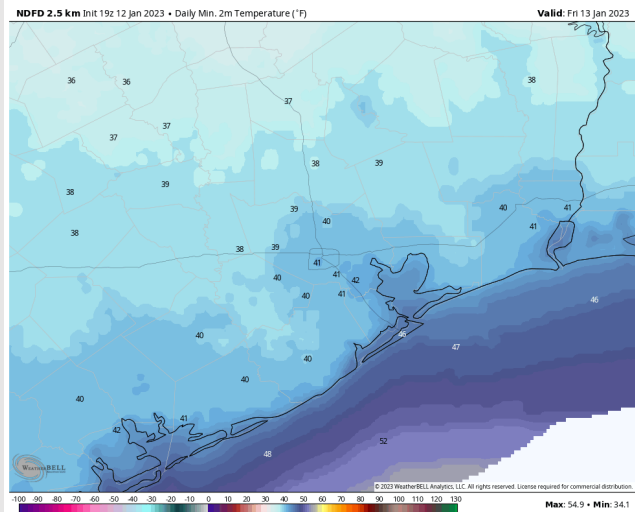
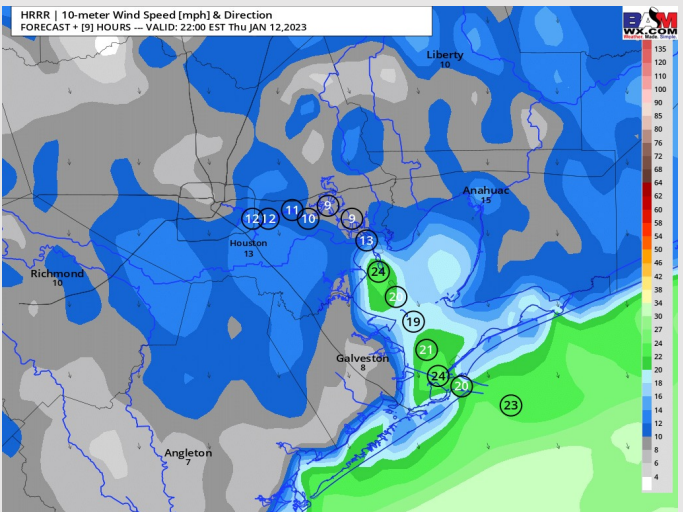
**Temps:** Low temperatures Friday AM in the mid 40s F near the Boarding Station and in the lower 40s F for all other stations.

**Visibility:** Not anticipating fog concerns for the rest of the day today.

## Precip Forecast: 7 PM CT



Wind Speed  
9 PM CT



High Temps  
Thursday



# Houston Pilots: Fri. 1/13/2023



## Forecast Discussion

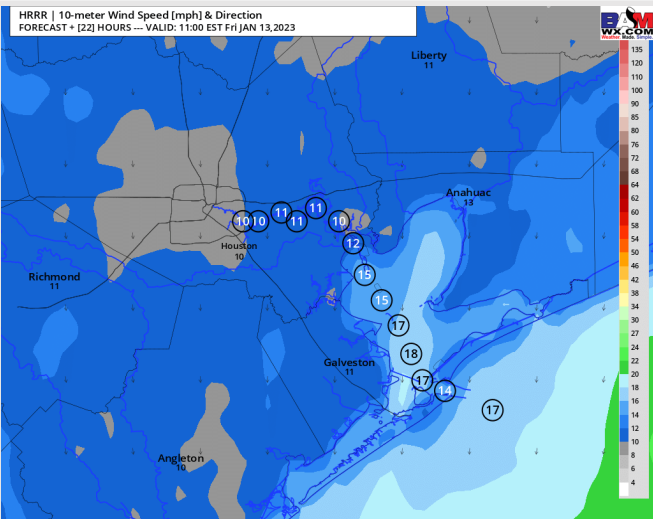
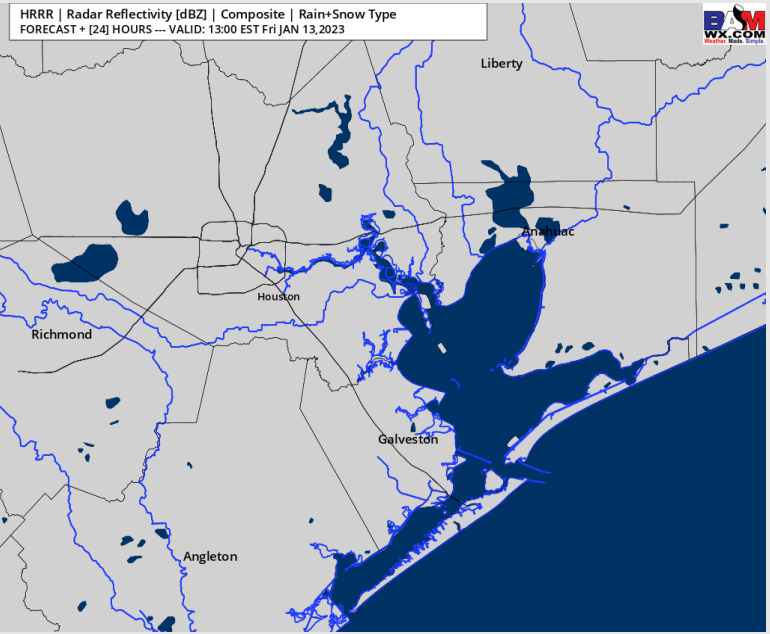
**Precip:** Anticipating a dry day for Friday.

**Wind:** Sustained winds will be from the NNW for the entire day. Winds will start most elevated in the morning, where north of Morgan's point will be 5 – 10 kts from 6 AM – 6 PM. South of Morgan's Point will be in the 9 – 16-kt range during the same timeframe. After 6 PM winds will lighten to 4 – 8 kts north of Morgan's and 8 – 15 kts south of Morgan's point. **Wind gusts south of 51/52 will range from 20 – 25 kts from 1 – 6 AM.**

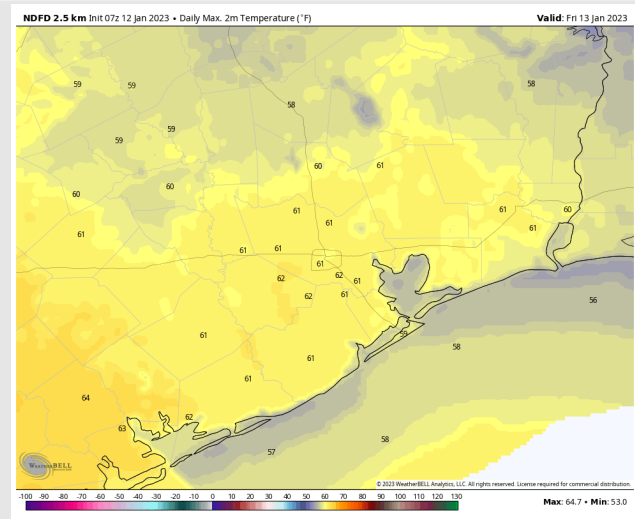
**Temps:** High temperatures Friday will be in the lower 60s F north of Morgan's Point and in the mid to upper 50s F south of Morgan's Point.

**Visibility:** Not anticipating any visibility concerns at this time.

## Precip Forecast: 12 PM CT



Wind Speed  
10 AM CT



High Temps  
Friday

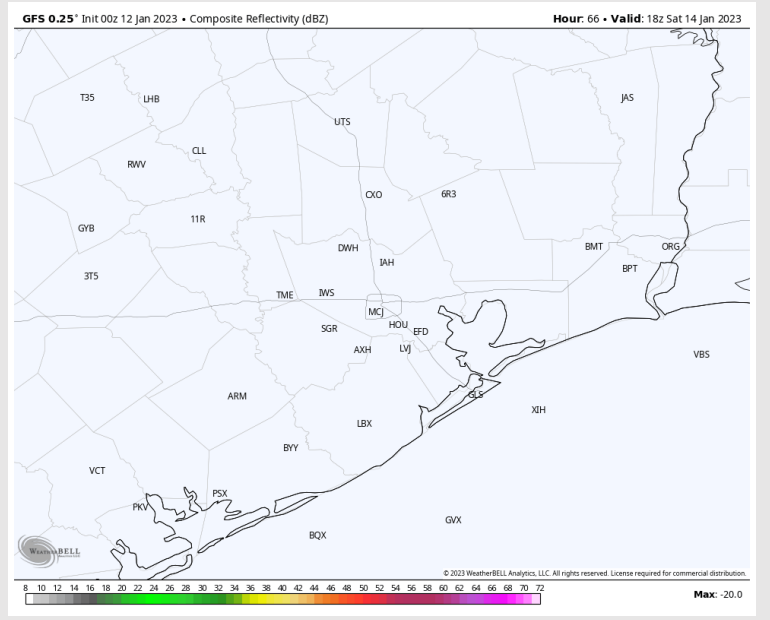
# Houston Pilots: sat. 1/14/2023



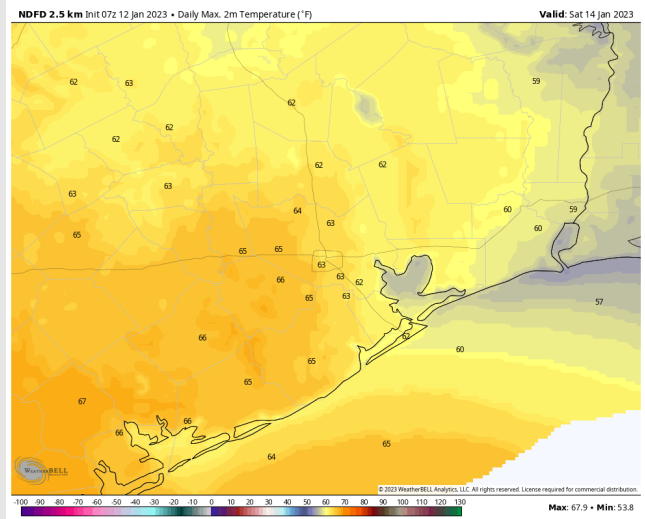
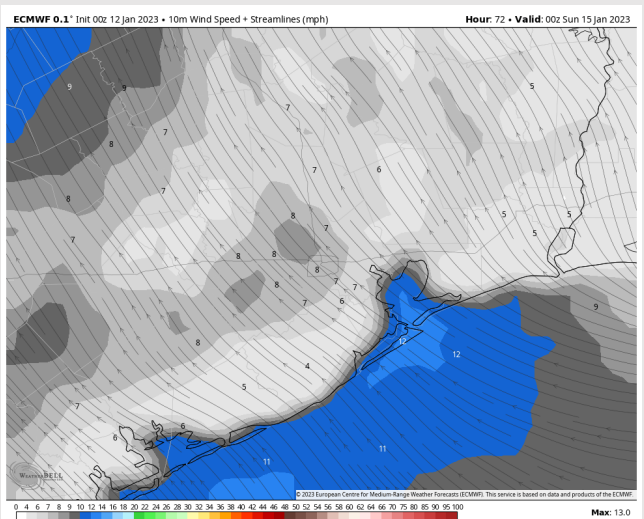
## Forecast Discussion

- Precip:** Anticipating dry conditions for the duration of Saturday.
- Wind:** Sustained winds for the AM period will start out of the ENE at 5 – 10kts. Winds to veer out of the S/SW by late afternoon / early evening, from 5-10kts. **Wind gusts of up to 16 - 21 kts will be possible across all stations throughout the evening.**
- Temps:** High temps Saturday in the upper 50s F and lower 60s F for all stations.
- Visibility:** Lower confidence in specifics, but low-end patchy fog risk will exist during evening hours.

## Precip Forecast: 12 PM CT

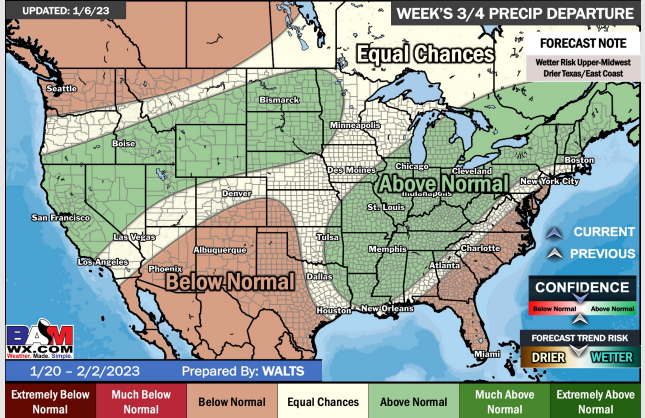
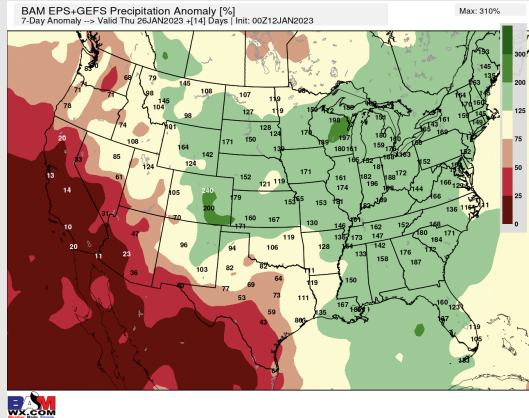
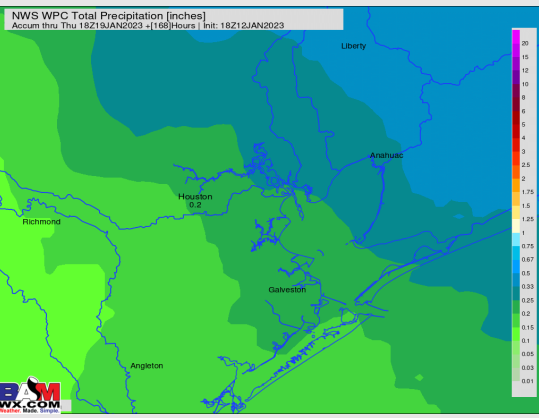
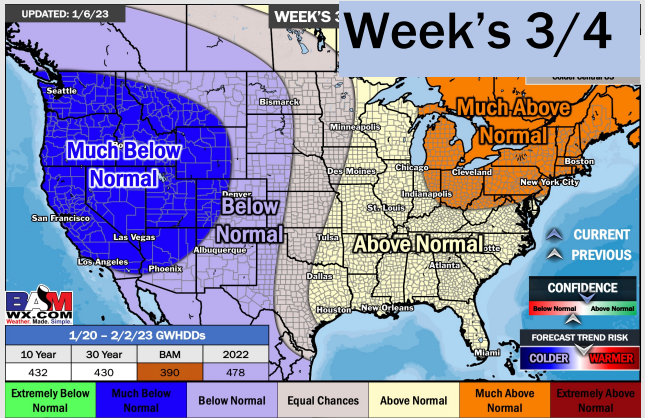
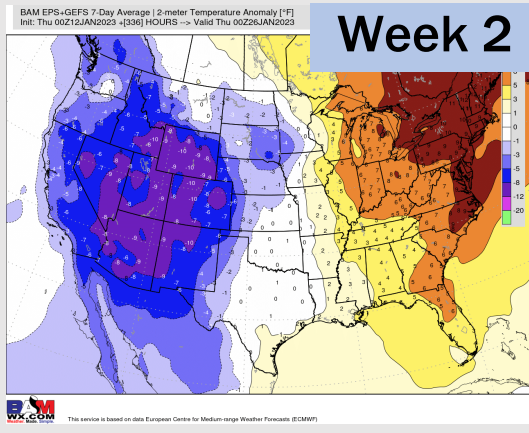
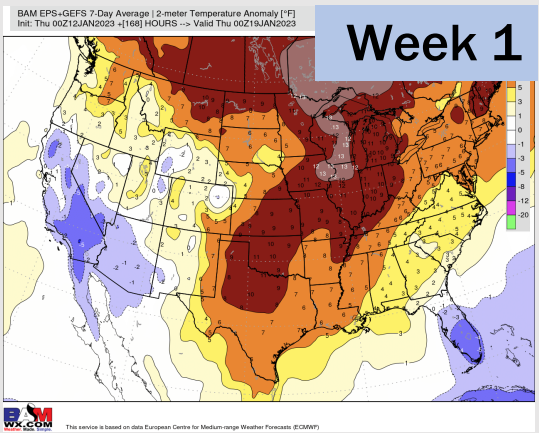


Wind Speed  
6 PM CT



High Temps  
Saturday

# Houston Pilots: 1/12/23



- A generally drier pattern with the best chances for precip moving forward coming Monday, and again next Wed/Thu. Temps will continue to remain above average.
- Week 2 precipitation is expected to be near normal for the week 2 timeframe. Temperatures are to be slightly above normal.
- Near normal precipitation chances and warmer weather is expected in the weeks 3/4 timeframe.