

Houston Pilots Forecast Package



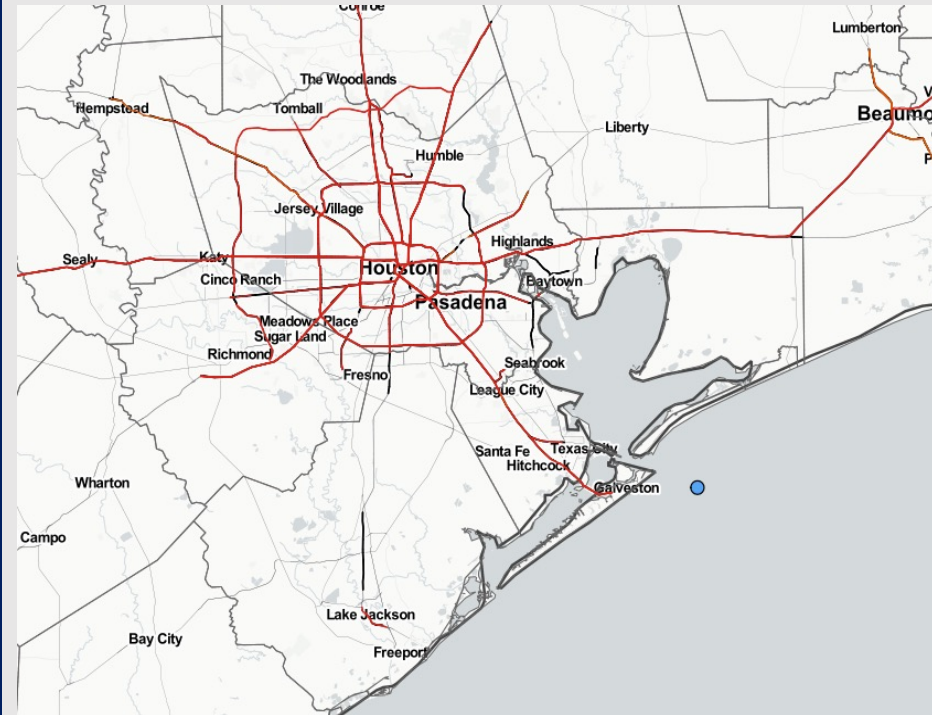
Updated: 5:00 AM CT

Wednesday, January 11, 2023

Forecaster: Vince Bryan

Weather Headlines

- **Low end risks for fog here over the next 24 hours before a front passes just before daybreak tomorrow and ushers out the fog threat through the weekend.**
- Outside of a rain chance as the front passes THU AM, mainly drier days are anticipated through the weekend.
- Number of days with gusty winds look to be on the increase, with Thu/Fri/Sun/Mon running the risk of the Boarding Station seeing gusts 20+ knots.
- **Worth watching Monday (1/16) for increased risks of wave heights reaching at/over 5 feet.**



Radar/NWS Alerts: 5:00 AM CT



As always, please do not hesitate to reach out to us with any forecast questions via the chat option on the Weather Porthole or our on-call number, **(317)-560-8122** press 1 for forecast questions.

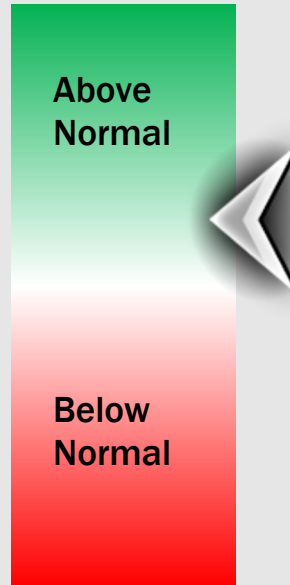
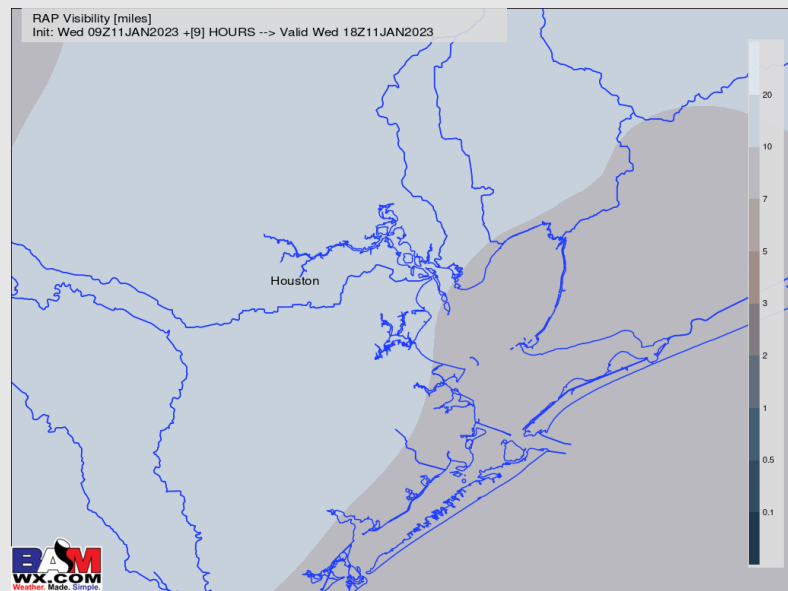
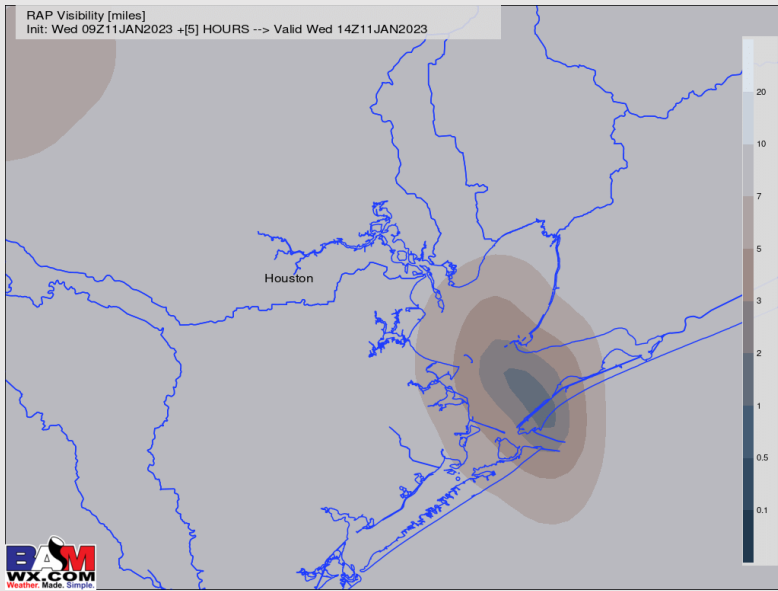
Houston Pilots Visibility Report



8 AM CT WED VISIBILITY

10 AM CT WED VISIBILITY

Confidence



TIMEFRAME	THREAT
CURRENT - 10 AM WED	LOW

- Gusty winds this AM have helped keep low clouds as the predominant feature vs. fog.
- Elevated winds likely continue to help limit fog chances this AM. While isolated pockets of fog through 9 AM cannot be 100% taken off the table, we are in favor of most stations being able to avoid the fog moving forward this AM.
- There is a very low end risk of patchy fog trying to return in the very early AM hours Thursday before the cold front arrives, but right now that is not favored/ not in our forecast.

Houston Pilots Extended Range Visibility Report



Saturday 1/14/23

Northerly winds in the AM will shift from the SE to S during the late evening.



Sunday 1/15/23

Winds will be from the S to SSW on Sunday, but the low levels of the atmosphere look too dry to support fog. This will need to be monitored.



Monday 1/16/23

Southerly winds possible for Monday with more low-level moisture available will make fog a possibility.



Chance for Reduced Visibility

Saturday AM	Unlikely
Saturday PM	Unlikely
Sunday AM	Unlikely
Sunday PM	Unlikely
Monday AM	Possible
Monday PM	Possible

Houston Pilots Visibility Report



Time	Wed 3am	Wed 4am	Wed 5am	Wed 6am	Wed 7am	Wed 8am	Wed 9am	Wed 10am	Wed 11am	Wed 12pm	Wed 1pm	Wed 2pm	Wed 3pm	Wed 4pm	Wed 5pm	Wed 6pm	Wed 7pm	Wed 8pm	Wed 9pm	Wed 10pm	Wed 11pm	Thu 12am	Thu 1am	Thu 2am	Thu 3am	Thu 4am	Thu 5am	Thu 6am	Thu 7am	Thu 8am	Thu 9am	Thu 10am	Thu 11am	Thu 12pm	Thu 1pm	Thu 2pm	
610 Bridge	6	6	6	5	3	3	6	9	10	10	10	10	10	10	10	10	10	8	6	6	6	6	5	4	4	4	6	7	8	8	10	10	10	10	10	10	10
Kinder 1	6	6	6	5	3	3	6	9	10	10	10	10	10	10	10	10	10	8	6	6	6	6	5	5	5	5	6	7	8	8	10	10	10	10	10	10	10
Greens Bayou	6	5	5	5	3	3	5	9	10	10	10	10	10	10	10	10	10	9	7	7	7	7	7	6	6	6	6	7	9	9	10	10	10	10	10	10	10
Shell Crude	5	5	5	4	3	3	5	9	10	10	10	10	10	10	10	10	10	9	9	9	9	9	8	7	7	7	8	8	8	10	10	10	10	10	10	10	10
Lynchburg Ferries	5	5	4	4	3	3	5	9	10	10	10	10	10	10	10	10	10	9	9	9	9	9	8	7	7	7	8	8	8	10	10	10	10	10	10	10	10
Exxon 3	5	4	4	4	3	3	5	9	10	10	10	10	10	10	10	10	10	9	9	9	9	9	8	7	7	7	8	8	8	10	10	10	10	10	10	10	10
Morgans Point	4	4	4	3	3	3	4	9	10	10	10	10	10	10	10	10	10	9	9	9	9	9	8	7	7	7	8	8	8	10	10	10	10	10	10	10	10
75/76	4	4	3	3	3	2	4	7	10	10	10	10	10	10	10	10	9	9	9	9	9	9	8	7	7	7	8	8	8	10	10	10	10	10	10	10	10
63/64	4	3	3	3	2	2	4	7	10	10	10	10	10	10	10	8	9	9	9	9	9	9	8	7	7	7	8	8	8	10	10	10	10	10	10	10	10
51/52	3	3	3	3	2	2	4	6	9	10	10	10	10	9	9	7	9	9	9	9	9	9	8	7	7	7	8	8	8	10	10	10	10	10	10	10	10
37/38	3	3	2	2	2	2	4	6	7	9	9	10	10	8	7	7	7	7	7	9	8	7	7	7	7	7	8	8	7	9	10	10	10	10	10	10	
25/26	3	3	3	2	2	2	4	6	6	7	8	8	9	8	7	7	7	7	7	9	9	9	9	9	7	7	7	8	8	7	9	10	10	10	10	10	10
11/12	3	3	3	3	2	2	4	6	6	6	7	8	9	8	7	7	7	7	7	9	9	7	7	7	7	7	8	8	7	9	10	10	10	10	10	10	10
1 & 2 Bravo	3	3	3	3	2	2	4	6	7	6	7	8	8	7	7	7	7	7	7	9	9	7	7	7	7	7	8	8	7	7	10	10	10	10	10	10	10

Houston Pilots Wind Report



Example

Sustained wind 13 Knots
Gusts 18 Knots
Wind from the N

WS: 13
G:18
N

Time Knots	Wed 3am	Wed 4am	Wed 5am	Wed 6am	Wed 7am	Wed 8am	Wed 9am	Wed 10am	Wed 11am	Wed 12pm	Wed 1pm	Wed 2pm	Wed 3pm	Wed 4pm	Wed 5pm	Wed 6pm	Wed 7pm	Wed 8pm	Wed 9pm	Wed 10pm	Wed 11pm	Thu 12am	Thu 1am	Thu 2am	Thu 3am	Thu 4am	Thu 5am	Thu 6am	Thu 7am	Thu 8am	Thu 9am	Thu 10am	Thu 11am	Thu 12pm	Thu 1pm	Thu 2pm
610 Bridge	8	8	8	9	8	9	10	10	11	11	11	12	12	11	10	10	11	10	10	10	10	10	10	9	9	9	8	7	8	9	12	12	13	13	13	14
	20	21	23	25	22	22	22	22	21	19	18	19	20	19	18	19	18	19	18	19	18	18	17	16	17	17	16	13	15	17	21	21	20	20	19	20
	SSW	SW	SW	SW	SW	SW	SW	SW	SW	SW	SW	SW	SW	SW	SSW	SSW	SSW	S	SSW	SSW	SSW	SSW	SW	SW	SW	WSW	W	W	NW	NW	NNW	NNW	NNW	NNW	NNW	NNW
Kinder 1	8	8	8	9	9	9	10	10	11	11	11	12	11	11	9	10	10	10	10	10	10	10	9	9	9	8	7	8	9	12	12	13	13	14	14	
	20	21	25	22	22	22	22	21	19	18	18	19	19	18	19	18	18	19	18	19	18	18	17	16	17	17	16	14	15	17	21	20	20	20	19	20
	SSW	SW	SW	SW	SW	SW	SW	SW	SW	SW	SW	SW	SW	SW	SSW	SSW	SSW	S	SSW	SSW	SSW	SSW	SW	SW	SW	WSW	W	W	NNW	NW	NNW	NNW	NNW	NNW	NNW	NNW
Greens Bayou	8	8	7	8	9	9	10	10	11	11	11	11	11	11	9	10	10	10	10	10	10	10	9	9	9	8	7	8	9	12	13	13	14	14	14	
	19	21	18	23	23	23	22	21	19	18	18	19	19	18	19	18	18	18	18	18	18	17	18	17	16	17	17	16	14	15	17	20	19	19	19	20
	SSW	SW	SW	SW	SW	SW	SW	SW	SW	SW	SW	SW	SW	SW	SSW	SSW	SSW	S	SSW	SSW	SSW	SSW	SW	SW	SW	WSW	W	W	NNW	NW	NNW	NNW	NNW	NNW	NNW	NNW
Shell Crude	8	8	6	7	9	9	10	10	11	11	11	11	11	11	9	10	10	10	10	10	10	10	9	9	9	8	7	8	9	12	13	13	14	14	14	
	19	20	17	22	23	23	22	22	19	18	18	19	19	19	19	17	17	18	17	18	17	18	17	16	17	17	16	14	15	17	20	19	19	19	20	
	SSW	SW	SW	SW	SW	SW	SW	SW	SW	SW	SW	SW	SW	SW	SSW	SSW	SSW	S	SSW	SSW	SSW	SSW	SW	SW	SW	WSW	W	W	NNW	NW	NNW	NNW	NNW	NNW	NNW	NNW
Lynchburg Ferries	7	7	6	6	9	9	10	10	10	11	11	10	10	10	8	10	10	11	10	10	10	10	9	9	9	8	8	8	9	12	13	13	14	14	14	
	18	18	14	20	23	23	22	21	19	18	18	18	18	18	19	17	17	17	17	18	17	17	17	16	17	17	16	14	15	17	20	20	19	19	19	20
	SSW	SW	SW	SW	SW	SW	SW	SW	SW	SW	SW	SW	SW	SW	SSW	SSW	SSW	S	SSW	SSW	SSW	SSW	SW	SW	SW	WSW	W	W	NNW	NW	NNW	NNW	NNW	NNW	NNW	NNW
Exxon 3	7	7	5	5	7	7	9	10	10	10	10	9	10	9	8	10	10	10	10	10	10	10	9	9	9	8	8	9	12	13	13	14	14	14	14	
	16	16	13	17	21	21	22	21	19	18	18	18	18	19	19	16	16	17	17	17	17	17	17	16	17	17	16	14	15	17	20	20	19	19	19	20
	SSW	SW	SW	SW	SW	SW	SW	SW	SW	SW	SW	SW	SSW	SSW	SSW	S	SSW	SSW	SSW	SSW	SSW	SSW	SW	SW	SW	WSW	W	W	NNW	NW	NNW	NNW	NNW	NNW	NNW	NNW
Morgans Point	7	7	6	5	7	6	9	9	9	10	10	9	10	9	8	11	11	11	10	11	11	10	10	10	10	9	8	9	10	12	13	13	14	14	14	
	15	15	13	15	19	19	23	22	19	18	18	18	19	19	16	17	17	17	18	17	17	18	16	17	17	17	15	15	17	20	20	19	19	19	20	
	SSW	SSW	SW	SW	SW	SW	SW	SW	SW	SW	SSW	SSW	SSW	SSW	S	S	S	SSW	SSW	SSW	SSW	SSW	SW	SW	SW	WSW	W	W	NNW	NW	NNW	NNW	NNW	NNW	NNW	NNW
75/76	7	9	7	8	8	8	10	9	10	11	10	10	10	10	11	12	12	12	12	12	12	12	11	11	11	11	11	10	10	11	13	14	14	15	15	15
	14	15	14	16	19	19	23	21	20	19	18	19	20	20	19	17	18	18	18	18	18	18	18	17	17	17	16	16	18	20	20	20	20	20	20	20
	SSW	SSW	SSW	SW	SW	SW	SW	SW	SW	SW	SSW	SSW	SSW	SSW	SSW	S	SSW	S	SSW	SSW	SSW	SSW	SSW	SW	SW	SW	WSW	W	W	NNW	NW	NNW	NNW	NNW	NNW	NNW
63/64	7	8	8	9	8	9	9	10	10	10	10	11	11	11	11	12	12	12	12	13	12	12	12	12	12	12	12	11	11	11	12	13	14	15	15	15
	14	15	15	16	17	18	20	20	20	19	19	19	19	20	17	17	17	18	18	18	18	18	18	17	17	16	16	16	18	20	20	20	20	20	21	
	SSW	SSW	SSW	SW	SW	SW	SW	SW	SW	SW	SSW	SSW	SSW	SSW	SSW	SSW	SSW	SSW	SSW	SSW	SSW	SSW	SSW	SW	SW	SW	WSW	W	W	NNW	NW	NNW	NNW	NNW	NNW	NNW
51/52	7	9	9	9	8	7	8	10	10	10	12	13	12	12	11	12	12	12	13	13	13	13	13	12	12	12	11	11	11	13	14	15	15	16	16	
	14	15	17	16	15	15	18	20	20	18	20	22	22	21	17	17	17	18	18	19	18	18	18	18	17	16	16	16	16	17	19	20	20	21	21	
	SSW	SSW	SW	SW	SW	SW	SSW	SW	SW	SW	SSW	SSW	SSW	SSW	SSW	SSW	SSW	SSW	SSW	SSW	SSW	SSW	SW	SW	SW	WSW	W	W	NW	NW	NNW	NNW	NNW	NNW	NNW	NNW
37/38	8	10	10	10	9	7	9	11	11	12	14	13	13	12	11	12	12	13	13	14	13	13	13	12	13	12	12	11	11	13	14	15	15	16	16	
	16	16	18	17	16	14	18	21	22	21	23	24	24	23	17	16	16	18	18	19	19	19	18	18	18	17	16	16	17	17	20	21	21	21	21	22
	SW	SW	SW	SW	SW	SW	SW	SW	SW	SW	SSW	SSW	SSW	SSW	SSW	SSW	SSW	SSW	SSW	SSW	SSW	SSW	SSW	SW	SW	SW	WSW	WSW	W	NW	NW	NNW	NNW	NNW	NNW	NNW
25/26	10	10	11	10	10	9	10	12	13	13	13	13	12	10	11	12	13	13	14	13	13	13	13	13	13	12	12	11	11	13	14	15	16	16	16	
	18	17	19	18	17	16	17	21	23	23	24	25	24	21	15	15	16	17	18	18	18	18	18	18	18	18	17	16	16	17	20	21	21	21	22	22
	SSW	SW	SW	SW	SW	SW	SW	SW	SW	SW	SSW	SSW	SW	SW	SSW	SSW	SSW	SSW	SSW	SSW	SSW	SSW	SSW	SW	SW	SW	WSW	WSW	W	W	NNW	NW	NNW	NNW	NNW	NNW
11/12	10	10	11	10	10	10	10	11	12	12	12	12	11	8	11	12	13	14	14	14	14	13	13	13	13	13	12	12	12	13	15	15	16	16	17	17
	19	19	20	18	18	17	16	19	20	22	21	24	22	18	14	15	16	17	19	18	18	18	18	18	18	18	17	17	16	18	20	21	21	21	22	22
	SSW	SW	SW	SW	SW	SW	SW	SW	SW	SW	SSW	SW	SW	SSW	SSW	SSW	SSW	S	SSW	SSW	SSW	SSW	SSW	SW	SW	SW	WSW	W	W	NNW	NW	NNW	NNW	NNW	NNW	NNW
1 & 2 Bravo	13	13	15	11	10	9	9	10	10	10	11	10	10	8	7	12	13	14	15	15	15	15	14	14	14	14	13	13	14	15	16	17	17	18	18	
	22	22	24	20	19	19	17	18	18	18	22	20	18	15	13	16	17	18	19	19	19	19	19	19	19	19	19	19	19	20	22	22	22	22	23	23
	SSW	SSW	SSW	SW	SW	SW	SW	SW	SW	SW	SW	SW	SW	SSW	SSW	SSW	S	S	SSW	SSW	SSW	SSW	SSW	SW	SW	SW	WSW	WSW	W	NNW	NW	NNW	NNW	NNW	NNW	NNW

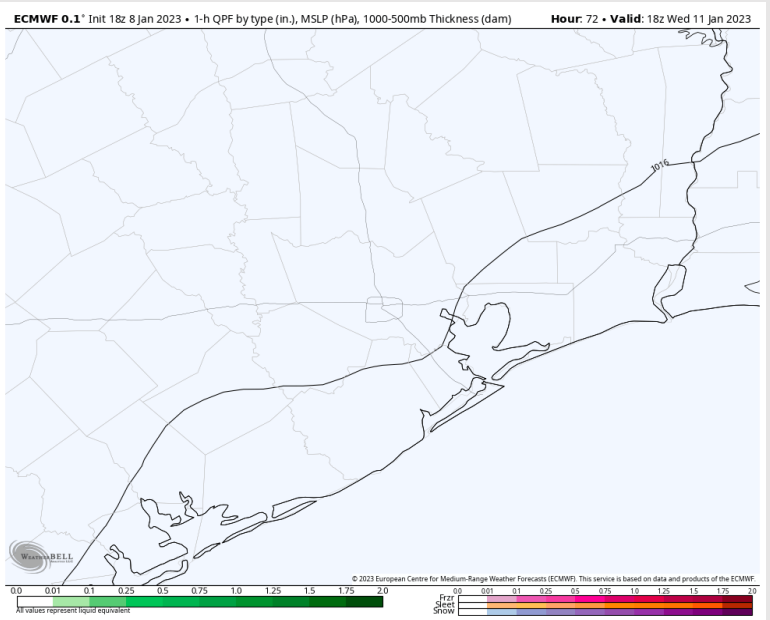
Houston Pilots: Wed. 1/11/2023



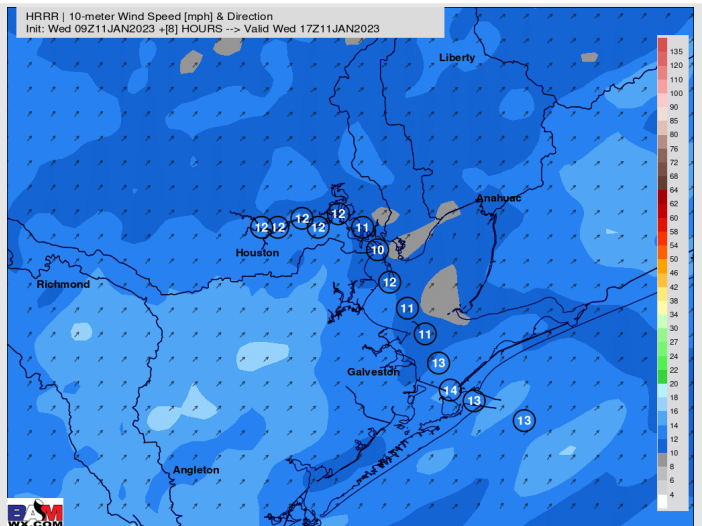
Forecast Discussion

- Precip:** Anticipating a dry day today.
- Wind:** Sustained winds out of the SW for the entire day. Winds will start out at 8 – 13 kts across all stations and pickup around 9 AM to 10 – 15 kts through 7 PM. **Wind gusts of up to 18 - 23 kts will be possible across all stations, especially after 11 AM.**
- Temps:** High temps Wednesday will be in the upper 70s F north of Morgan's Point and in the mid 70s F south of Morgan's Point with Boarding Station temps near 70 F.
- Visibility:** More information on the visibilities slide above regarding fog.

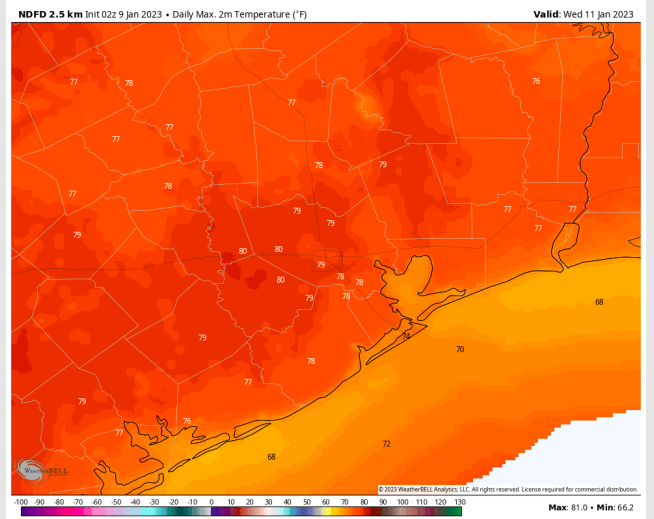
Precip Forecast: 12 PM CT



Wind Speed
12 PM CT



High Temps
Today



Houston Pilots: Thur. 1/12/2023



Forecast Discussion

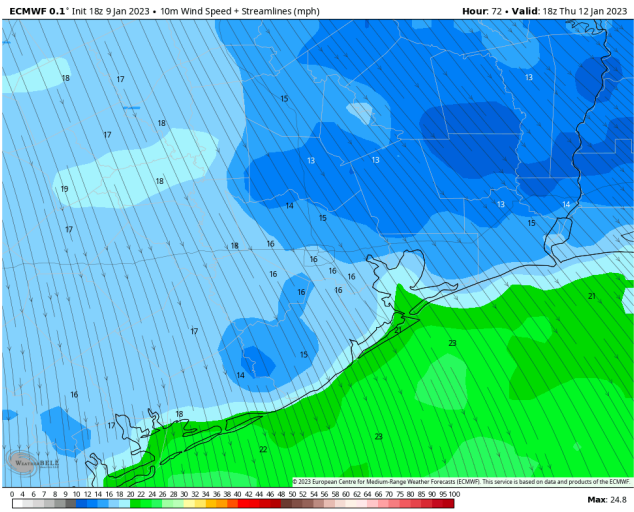
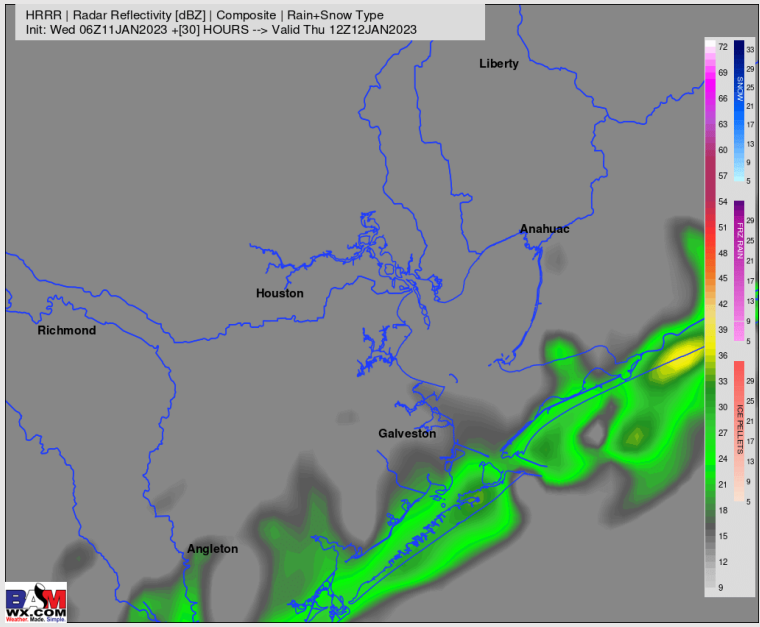
Precip: Anticipating a 60% chance for showers along the cold front that will march through the area in the 3 – 7 AM timeframe. Beyond this, we are favoring a dry day today.

Wind: Sustained winds will start from the SW in the AM and shift from the NW by 8 AM as a front pushes through. Winds north of Morgan’s Point will range from 8 – 13 kts (even after the front pushes through) and south of Morgan’s point will be more elevated at 13 – 18 kts. **Wind gusts could reach as high as 25 kts across all stations from 10 AM – 4 PM. Wind gusts will be highest at the Boarding Station, where gusts could reach 30 kts during the 5 PM – 11 PM timeframe.**

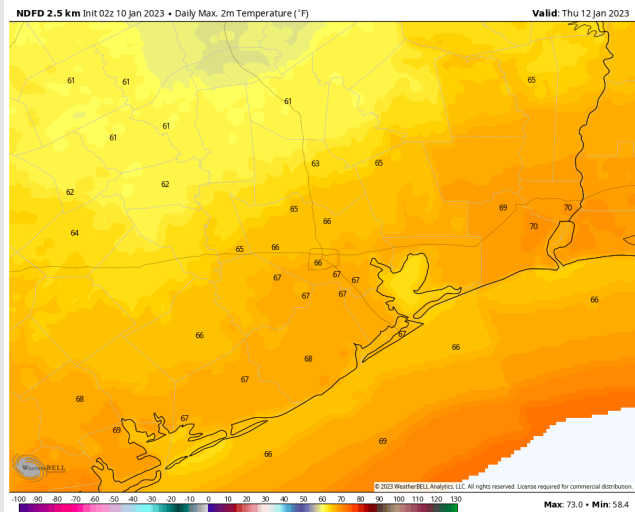
Temps: High temperatures Thursday will be in the mid 60s F across all stations.

Visibility: Fog is not likely to occur for the daytime hours Thursday as the front passes, however it is at least worth watching the pre-dawn hours for patchy fog to try and develop out ahead of the front.

Precip Forecast: 5 AM CT



Wind Speed
12 PM CT



High Temps
Thursday

Houston Pilots: Fri. 1/13/2023

Forecast Discussion

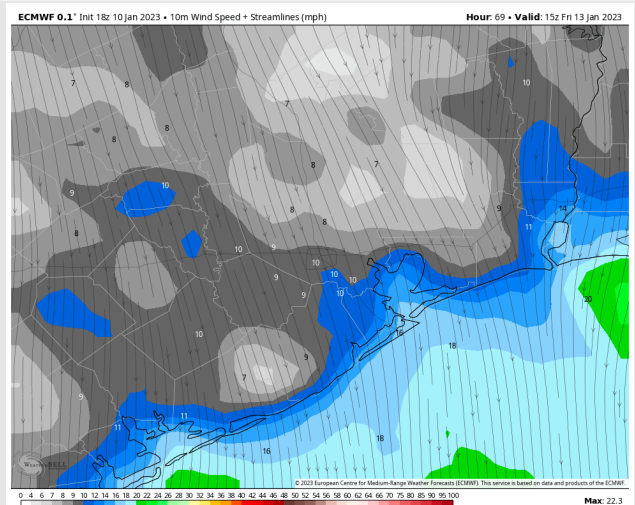
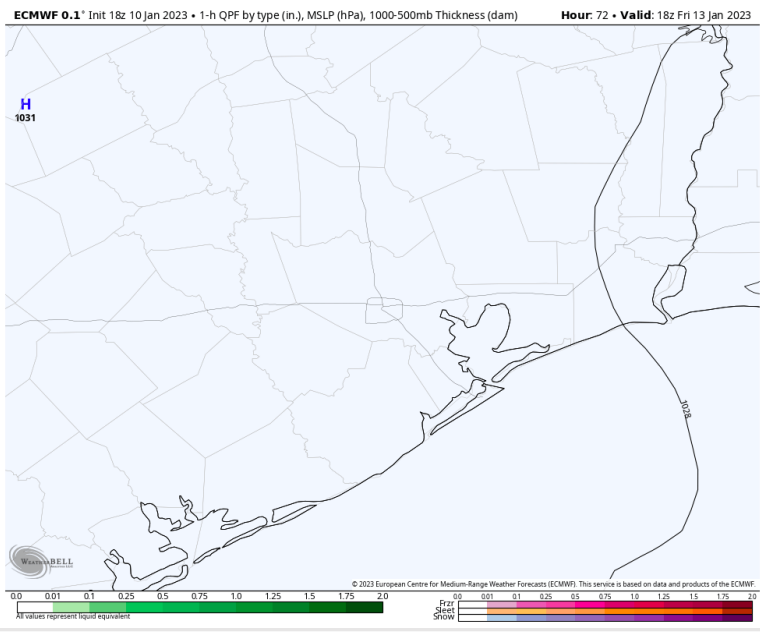
Precip: Anticipating a dry day for Friday.

Wind: Sustained winds will be from the NNW for the entire day. Winds will start most elevated in the morning, where north of Morgan's point will be 5 – 10 kts from 6 AM – 6 PM. South of Morgan's Point will be in the 9 – 16-kt range during the same timeframe. After 6 PM winds will lighten to 4 – 8 kts north of Morgan's and 8 – 15 kts south of Morgan's point. **Wind gusts south of 51/52 will range from 20 – 25 kts from 1 – 6 AM.**

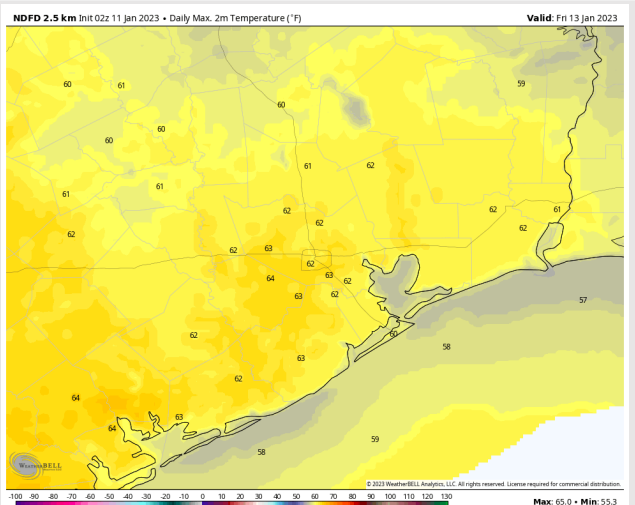
Temps: High temperatures Friday will be in the lower 60s F north of Morgan's Point and in the mid to upper 50s F south of Morgan's Point.

Visibility: Not anticipating any visibility concerns at this time.

Precip Forecast: 12 PM CT

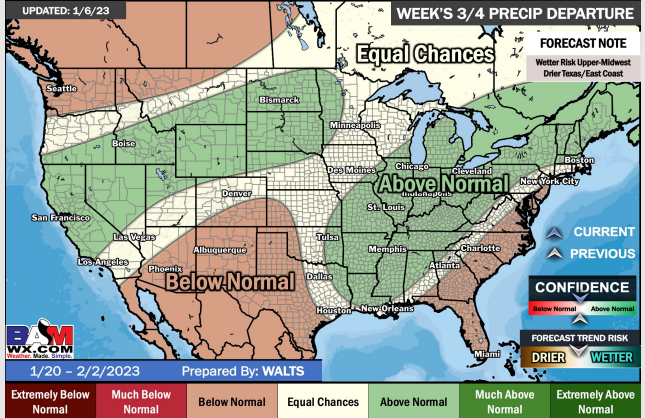
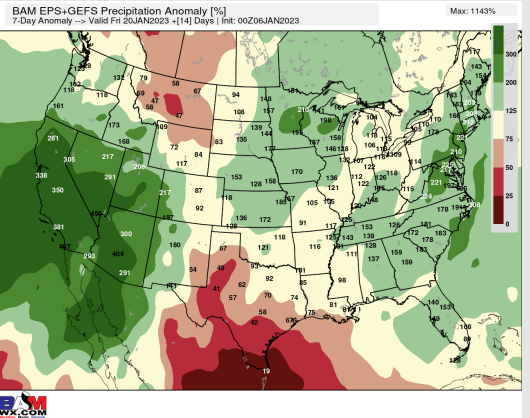
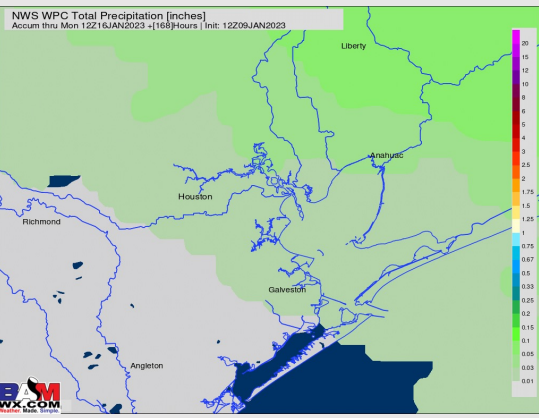
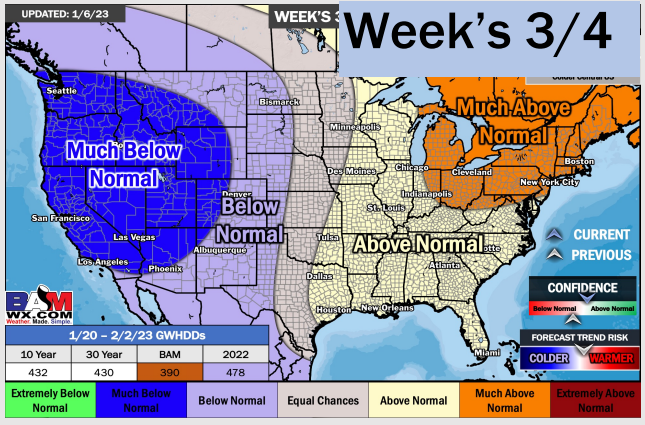
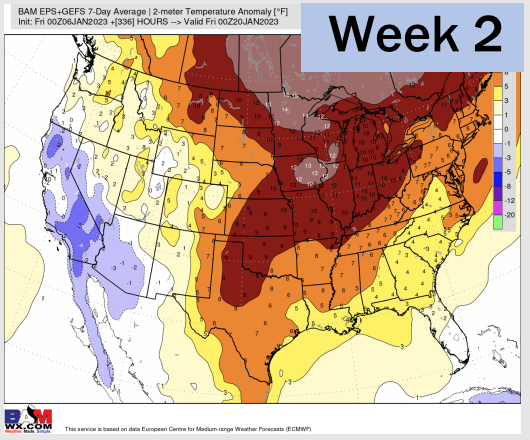
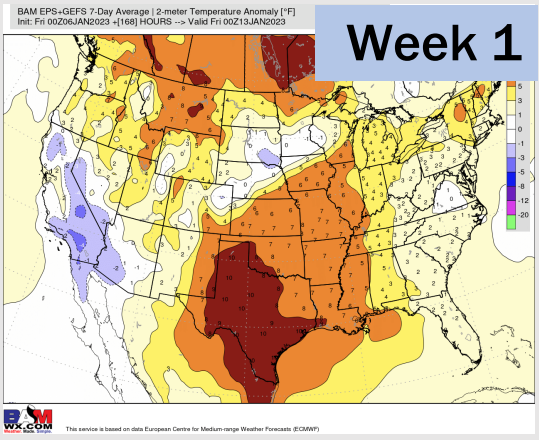


Wind Speed
10 AM CT



High Temps
Friday

Houston Pilots: 1/11/23



- A generally drier pattern with the best chances for precip moving forward coming Monday, and again next Wed/Thu. Temps will continue to remain above average.
- Week 2 precipitation is expected to be near normal for the week 2 timeframe. Temperatures are to be above normal.
- Near normal precipitation chances and warmer weather is expected in the weeks 3/4 timeframe.