

Houston Pilots Forecast Package



Updated: 1:50 PM CT

Saturday, January 7, 2023

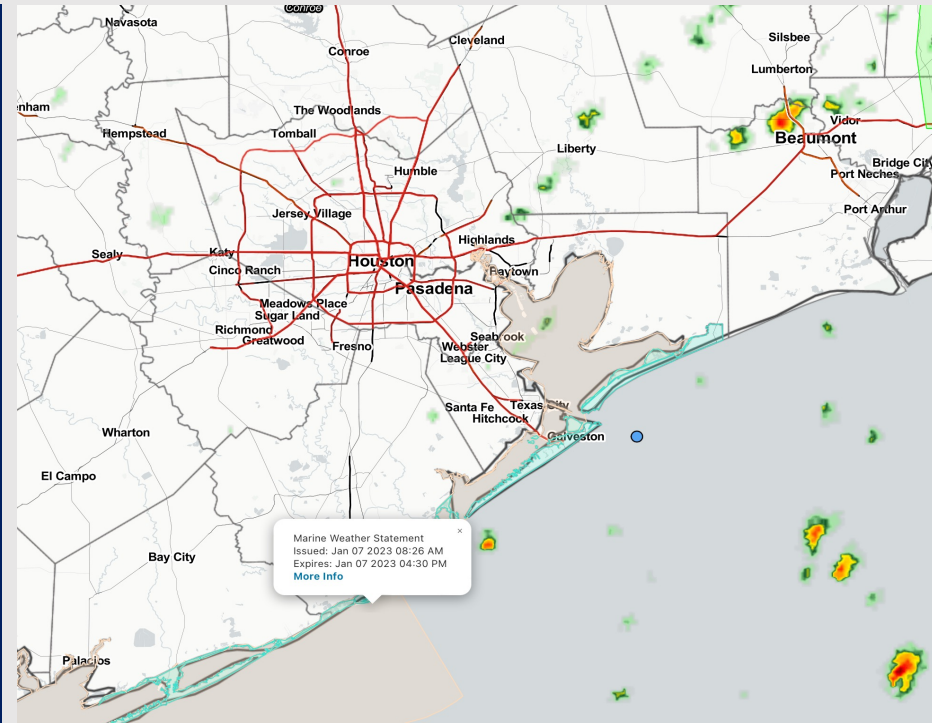
Forecaster: Alyssa McClung

Weather Headlines

➤ Patchy fog possible this evening into tomorrow morning. View visibility slides for more details.

➤ Chances tonight for scattered showers / storms into tomorrow morning. Monday looks to be a dry day.

➤ Winds will stay in the 5 – 15-kt range for the next three days with a few gusts peaking at 17 kts at the Boarding Station.



Radar/NWS Alerts: 1:50 PM CT



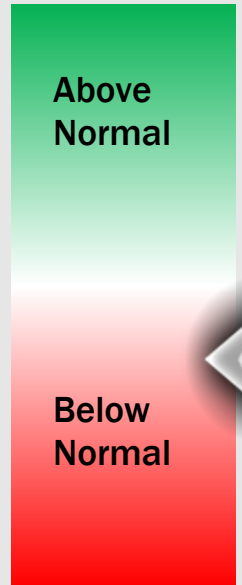
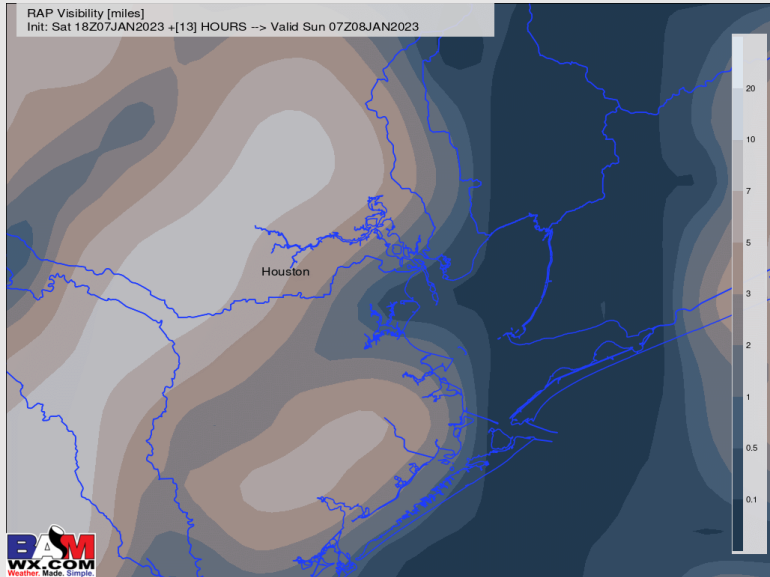
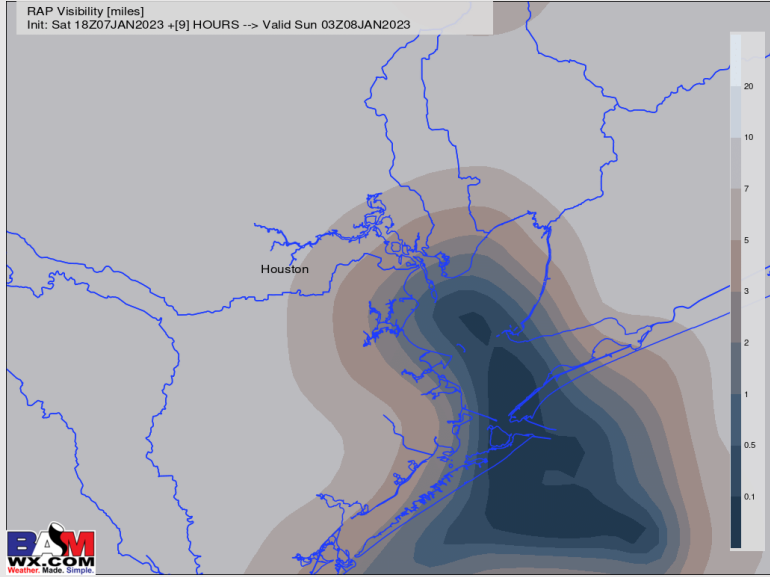
As always, please do not hesitate to reach out to us with any forecast questions via the chat option on the Weather Porthole or our on-call number, **(317)-560-8122** press 1 for forecast questions.

Houston Pilots Visibility Report



9 PM CT SAT VISIBILITY 1 AM CT SUN VISIBILITY

Confidence



TIME	THREAT
8 PM SAT – 6 AM SUN	MEDIUM - HIGH

- Patchy dense fog will be possible this evening after 8 PM. Chances begin at the Boarding Station then gradually fog will move North, impacting stations south of Morgan’s Point.
- Anticipating visibilities of less than 1 mile for stations south of Morgan’s Point with isolated pockets of less than 0.5 mile visibility possible.
- Stations north of Morgan’s Point will likely experience visibilities of 3 – 5 miles with the greatest risk of reduced visibility of less than 1 mile between 12 - 4 AM.
- Favoring fog to move out of the area around 6 AM tomorrow as a front moves through.

Houston Pilots Extended Range Visibility Report



Tuesday 1/10/23

Calm winds in the AM could allow for patchy fog to setup; although not favoring fog to initialize. During the PM hours, setup is borderline with limited moisture at the surface.



Wednesday 1/11/23

Worth keeping eyes on Wednesday for a patchy fog risk. This does not look to be sea fog, but rather typical radiation fog that lifts after daybreak.



Thursday 1/12/23

Winds in the AM will be from the SSW ahead of a cold front. In the afternoon winds shift from the NW wiping out any fog potentials for the PM hours.



Chance for Reduced Visibility

Tuesday AM	Possible
Tuesday PM	Possible
Wednesday AM	Possible
Wednesday PM	Unlikely
Thursday AM	Possible
Thursday PM	Unlikely

Houston Pilots Visibility Report



Time	Sat 12pm	Sat 1pm	Sat 2pm	Sat 3pm	Sat 4pm	Sat 5pm	Sat 6pm	Sat 7pm	Sat 8pm	Sat 9pm	Sat 10pm	Sat 11pm	Sun 12am	Sun 1am	Sun 2am	Sun 3am	Sun 4am	Sun 5am	Sun 6am	Sun 7am	Sun 8am	Sun 9am	Sun 10am	Sun 11am	Sun 12pm	Sun 1pm	Sun 2pm	Sun 3pm	Sun 4pm	Sun 5pm	Sun 6pm	Sun 7pm	Sun 8pm	Sun 9pm	Sun 10pm	Sun 11pm			
610 Bridge	10	10	10	10	10	10	10	10	10	9	8	7	7	7	9	6	6	6	6	5	4	5	7	10	10	10	10	10	10	10	10	10	10	10	10	10	10	10	
Kinder 1	10	10	10	10	10	10	10	10	10	9	8	7	7	7	9	6	6	6	6	5	4	5	7	10	10	10	10	10	10	10	10	10	10	10	10	10	10	10	
Greens Bayou	10	10	10	10	10	10	10	10	10	8	8	7	7	7	9	6	6	7	7	7	4	5	7	10	10	10	10	10	10	10	10	10	10	10	10	10	10	10	
Shell Crude	10	10	10	10	10	10	10	10	10	8	8	7	7	7	8	5	5	8	9	9	6	5	7	10	10	10	10	10	10	10	10	10	10	10	10	10	10	10	
Lynchburg Ferries	10	10	10	10	10	10	10	10	9	8	7	7	7	7	8	5	5	8	9	9	6	5	7	10	10	10	10	10	10	10	10	10	10	10	10	10	10	10	
Exxon 3	10	10	10	10	10	10	10	10	9	8	7	7	6	7	8	5	5	8	9	9	7	5	6	10	10	10	10	10	10	10	10	10	10	10	10	10	10	10	
Morgans Point	10	10	10	10	10	10	10	9	8	7	7	7	7	7	8	5	5	8	9	9	7	6	6	9	10	10	10	10	10	10	10	10	10	10	10	10	10	10	
75/76	10	10	10	10	10	10	10	9	8	7	7	7	7	7	9	5	5	8	9	9	7	6	6	9	10	10	10	10	10	10	10	10	10	10	10	10	10	10	
63/64	10	10	10	10	10	10	9	8	7	7	7	7	7	7	9	5	4	8	9	9	7	6	5	8	10	10	10	10	10	10	10	10	10	10	10	10	10	10	
51/52	10	10	10	10	10	10	8	7	7	7	7	7	7	7	8	1	2	8	9	9	7	6	4	6	8	9	10	10	10	10	10	10	10	10	10	9	9	8	9
37/38	10	10	10	10	10	10	8	7	7	7	7	8	7	6	8	1	1	6	9	9	8	5	4	4	6	8	9	9	10	10	10	9	9	8	8	8	8	9	
25/26	10	10	10	10	10	10	8	7	7	7	7	8	7	6	8	0.99	1	5	9	9	9	6	4	5	5	7	8	8	8	8	8	8	8	8	8	8	8	9	
11/12	9	8	9	9	9	8	8	7	7	7	7	8	7	6	7	2	0.24	3	7	9	8	6	4	6	4	7	8	8	8	8	8	8	8	8	8	9	10	9	
1 & 2 Bravo	7	7	7	7	7	7	7	7	7	7	7	7	7	7	7	3	0.22	0.3	6	7	9	7	4	6	4	7	8	8	8	8	8	8	8	8	8	10	10	9	

Refer to the slides above for the official BAM thinking. The chart here is not 100% perfect.

Houston Pilots Wind Report



Example

Sustained wind 13 Knots
 Gusts 18 Knots
 Wind from the N

WS: 13
 G:18
 N

Time Knots	Sat 12pm	Sat 1pm	Sat 2pm	Sat 3pm	Sat 4pm	Sat 5pm	Sat 6pm	Sat 7pm	Sat 8pm	Sat 9pm	Sat 10pm	Sat 11pm	Sun 12am	Sun 1am	Sun 2am	Sun 3am	Sun 4am	Sun 5am	Sun 6am	Sun 7am	Sun 8am	Sun 9am	Sun 10am	Sun 11am	Sun 12pm	Sun 1pm	Sun 2pm	Sun 3pm	Sun 4pm	Sun 5pm	Sun 6pm	Sun 7pm	Sun 8pm	Sun 9pm	Sun 10pm	Sun 11pm
610 Bridge	6	7	5	6	6	7	6	2	2	2	2	2	2	3	6	5	6	7	7	7	7	8	9	8	7	7	7	7	6	5	5	5	5	5	4	
	12	11	8	8	12	13	14	6	6	5	2	2	3	6	13	10	10	10	12	11	13	12	13	13	12	11	11	10	10	9	9	9	9	10	9	
Kinder 1	6	7	5	6	7	7	7	2	2	2	2	2	2	3	5	5	6	7	7	7	7	8	8	8	7	7	7	6	5	5	5	5	4			
	12	11	8	9	12	14	15	7	6	4	2	2	3	6	11	9	10	12	11	13	12	13	13	12	11	11	10	11	9	9	9	9	9	9		
Greens Bayou	6	6	6	7	7	8	6	3	3	2	2	2	2	3	5	5	6	7	7	7	7	8	8	8	7	7	7	6	5	5	5	5	4			
	11	10	9	11	14	15	16	7	4	2	2	2	4	5	10	9	10	11	11	13	12	13	13	13	11	11	10	11	9	9	9	9	9	9		
Shell Crude	5	7	7	8	9	9	7	4	2	2	2	1	3	3	3	5	6	7	7	7	7	8	8	9	8	7	7	6	5	5	5	5	4			
	11	10	10	12	15	15	17	10	5	2	2	2	4	5	7	9	10	11	12	13	12	13	12	12	11	11	10	10	11	9	9	9	9	9		
Lynchburg Ferries	5	7	7	8	8	8	6	3	3	2	2	1	3	3	3	5	7	7	8	7	8	8	8	9	8	7	7	6	5	5	5	5	4			
	10	11	11	13	16	16	15	10	4	2	3	2	5	5	8	9	10	11	12	13	12	13	12	12	11	11	10	10	9	9	9	9	9			
Exxon 3	5	7	7	8	8	7	6	5	2	2	2	1	3	2	3	5	6	7	7	7	8	8	8	8	8	7	7	6	5	5	5	5	5			
	10	12	12	13	16	16	13	12	4	2	3	2	5	4	8	10	11	12	13	13	13	13	12	11	10	11	10	9	9	10	10	10	9			
Morgans Point	5	6	8	8	8	7	6	6	4	2	2	1	3	1	4	5	7	7	8	7	8	8	8	8	7	7	6	6	6	5	5	5				
	10	12	13	14	16	15	12	12	8	3	3	2	4	4	4	9	10	11	12	13	14	14	13	12	11	11	10	10	10	10	10	11	11	10		
75/76	5	8	9	9	10	8	7	7	8	5	3	3	3	1	5	5	7	8	8	8	9	9	9	9	8	7	7	6	6	7	7	7				
	11	13	14	15	17	15	10	10	13	9	6	4	6	7	6	9	10	12	12	13	14	15	14	13	12	11	11	10	10	11	12	12	12			
63/64	6	9	10	10	11	10	7	5	8	7	5	4	3	2	3	5	7	8	8	9	10	10	10	9	9	8	7	7	7	7	8	8				
	10	13	14	16	17	14	10	9	14	13	10	7	7	8	10	11	12	13	14	15	14	15	14	13	12	11	11	10	10	11	12	13	12			
51/52	4	9	10	10	11	10	8	6	8	6	3	2	2	2	5	7	8	9	10	10	10	10	10	9	8	8	7	7	7	7	8	8				
	9	13	14	16	16	14	11	11	14	13	13	9	6	10	5	8	10	11	12	13	14	15	15	14	12	11	11	10	11	12	13	12	12			
37/38	4	9	10	10	11	10	8	7	7	7	6	3	1	4	2	5	7	7	7	9	9	10	11	10	9	8	8	7	7	8	8	8				
	9	12	13	15	15	13	12	12	14	13	12	10	8	11	4	8	9	10	11	13	14	15	15	14	13	12	11	11	10	11	12	13	12	12		
25/26	4	8	8	9	10	9	7	7	6	5	3	2	5	2	5	7	7	8	9	10	11	11	10	10	9	8	8	7	7	8	8	8				
	9	11	12	13	13	13	13	13	13	13	12	10	10	10	3	7	8	10	11	12	14	15	15	14	13	12	11	10	10	11	12	12	12			
11/12	4	6	6	8	9	10	8	8	7	7	6	6	5	3	5	6	7	8	9	10	11	11	10	9	8	8	7	7	7	8	8	9	9			
	9	9	11	12	13	14	14	14	14	14	14	12	12	10	5	7	8	10	10	12	14	15	15	14	13	12	11	10	10	10	11	12	13	12		
1 & 2 Bravo	4	4	7	9	10	11	10	9	9	9	8	7	8	7	7	7	8	8	10	11	12	11	11	10	10	9	8	8	8	8	9	10	10			
	10	10	11	13	14	16	15	15	16	14	12	12	12	14	13	10	9	10	10	13	14	15	15	15	14	13	11	10	10	10	10	11	12	14		

Houston Pilots: sat. 1/7/2023



Forecast Discussion

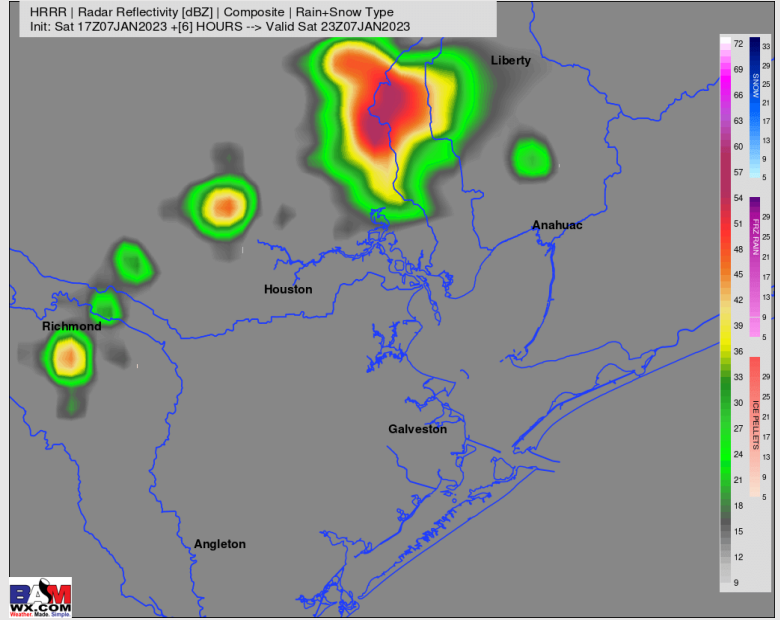
Precip: A 20% chance for hit and miss pockets of rain from now through 4 – 5 PM. Chances then will increase closer to ~30% beyond 4 – 5 PM and will remain sporadic through the rest of the afternoon and evening hours.

Wind: Winds will be sustained out of the S/SE at 8 – 13 kts until 6 PM. After 6 PM, winds will be 3 – 8 kts north of Morgan’s Point and 8 – 13 kts south of Morgan’s Point. Winds will gradually calm approaching midnight.

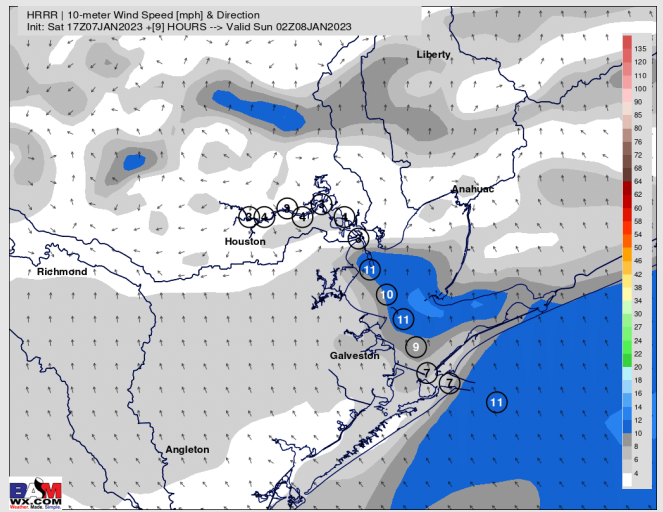
Temps: Low temps Sunday morning near 60 F at the Boarding Station and in the upper 50s F for all other stations.

Visibility: Sea fog risk beginning tonight and continuing into tomorrow AM. Check visibility slide above for more on the thinking.

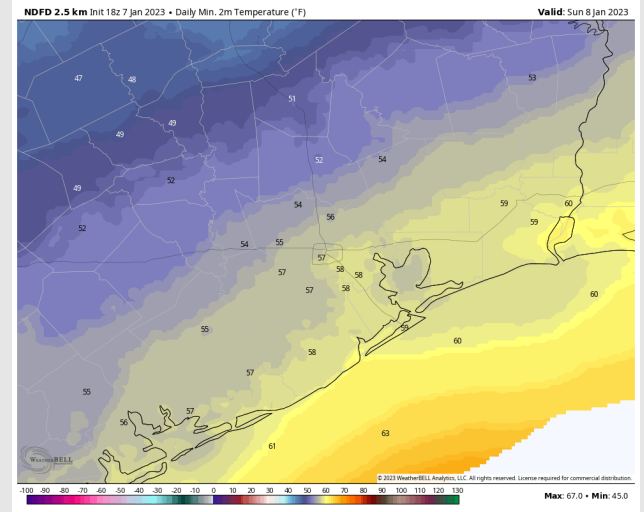
Precip Forecast: 5 PM CT



Wind Speed
8 PM CT



Low Temps
Sunday AM



Houston Pilots: Sun. 1/8/2023



Forecast Discussion

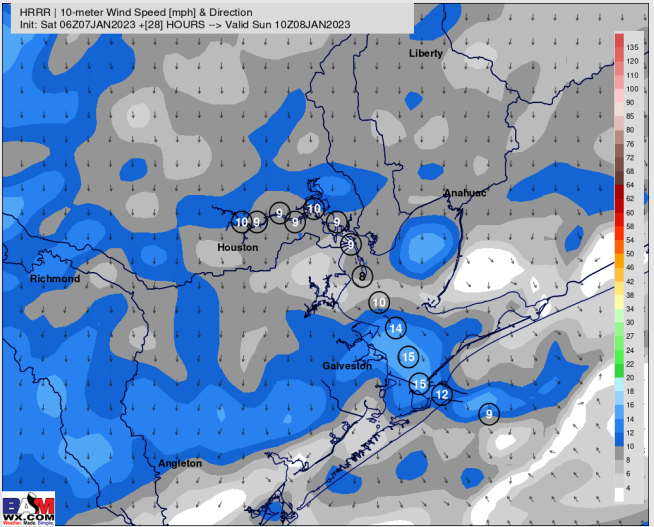
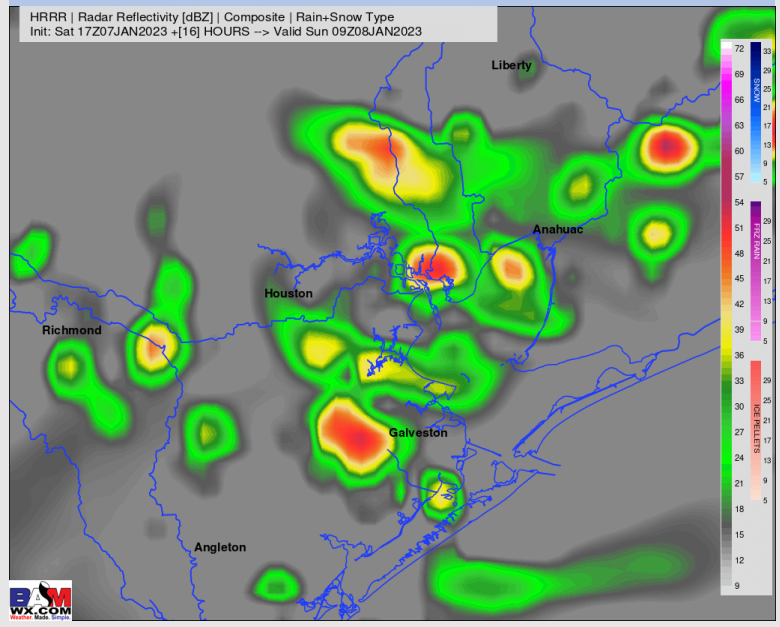
Precip: Favoring a 60-70% chance showers/thunderstorms early Sunday AM. After 8 AM precip will become a bit more scattered in nature (closer to 40-50%), and then precip looks to clear the area by ~11 AM.

Wind: Sustained winds will start out variable at 2 - 6kts early Sunday AM. After 5 AM, winds will shift to out of the NNE at 8-13 kts for the rest of the day (gusts to 15 kts possible at the Boarding Station).

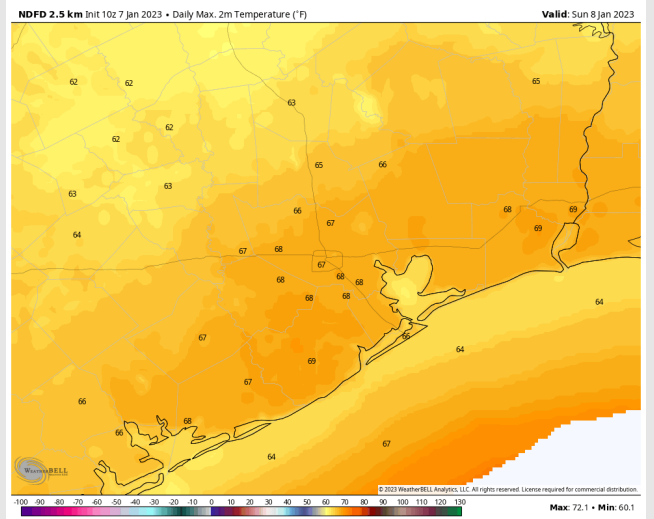
Temps: High temperatures Sunday in the lower 60s F across all stations.

Visibility: Reduced visibility via rain will be possible.

Precip Forecast: 4 AM CT



Wind Speed
6 AM CT



High Temps
Sunday

Houston Pilots: Mon. 1/6/2023



Forecast Discussion

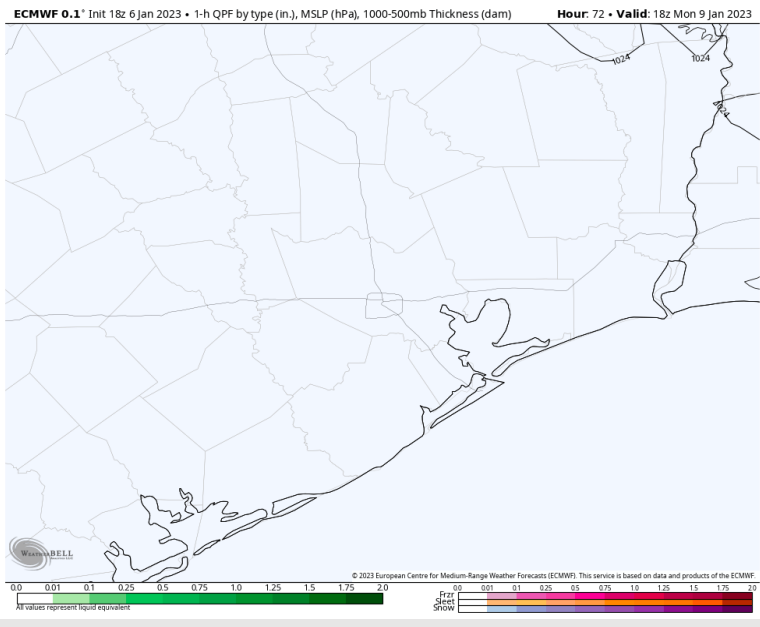
Precip: Expecting dry conditions for Monday.

Wind: NE winds in the morning will become easterly by 5 PM then SSE approaching midnight. Winds north of Morgan's Point will be 3 – 7 kts and winds South of Morgan's Point will be 7 – 14 kts. Wind gusts could reach 17 kts at the Boarding Station between 5 AM – 12 PM.

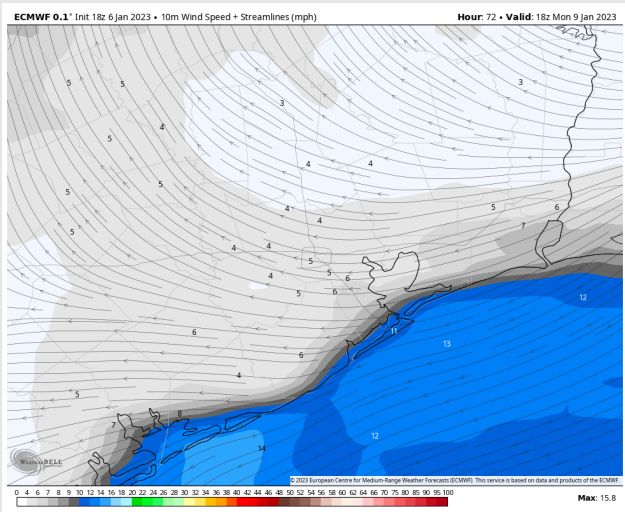
Temps: High temperatures Monday will be in the mid to lower 60s F across all stations.

Visibility: Not anticipating any visibility concerns for the majority of the day, however fog could be possible after 12 AM for Tuesday morning (noted on extended range visibility)

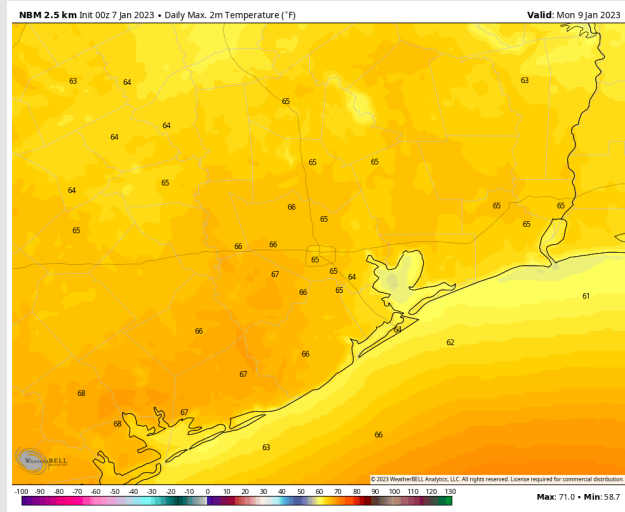
Precip Forecast: 12 PM CT



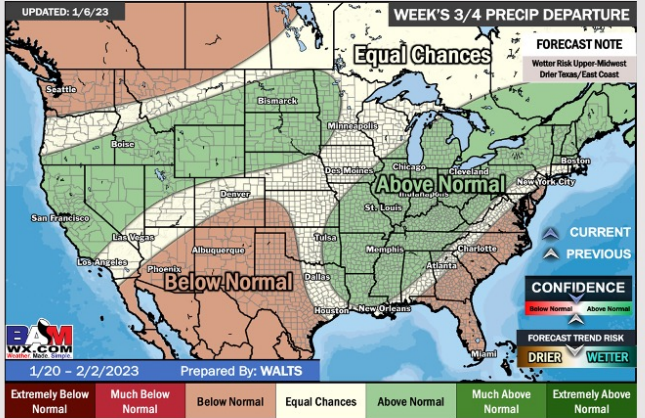
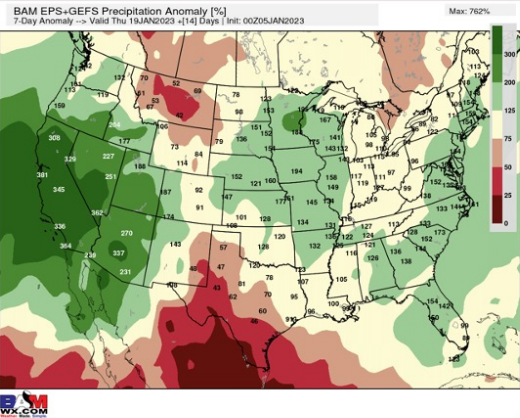
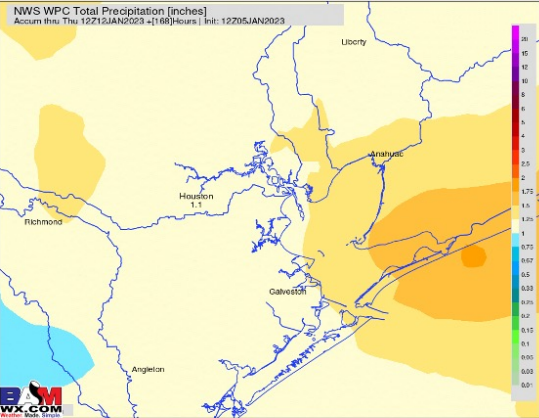
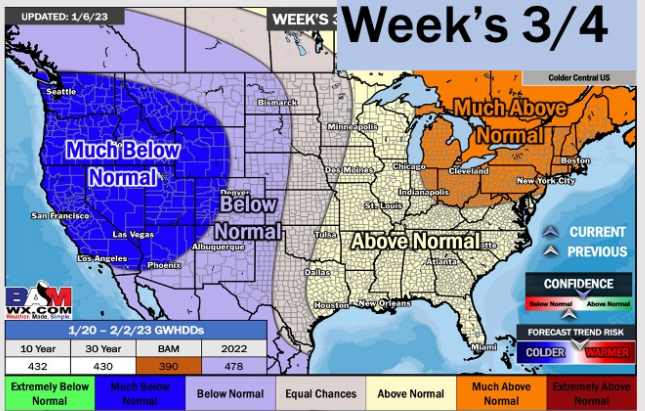
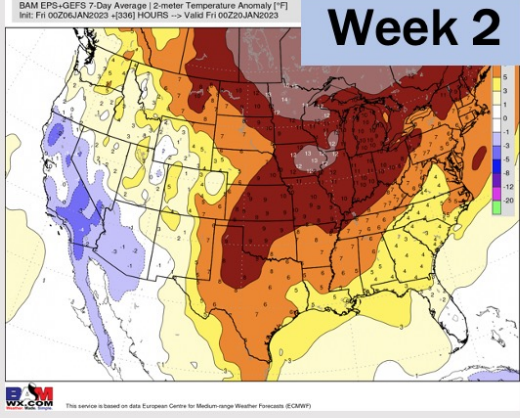
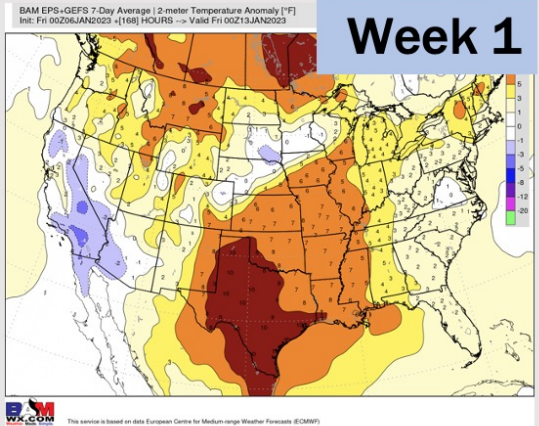
Wind Speed
12 PM CT



High Temps
Monday



Houston Pilots: 1/6/23



- Watching late Saturday for increased rain chances that will continue into early next week. Expecting some low end rain chances middle of next week. Temps will continue to remain above average.
- Week 2 precipitation is expected to be near normal for the week 2 timeframe. Temperatures are to be above normal.
- Near normal precipitation chances and warmer weather is expected in the weeks 3/4 timeframe.