

Houston Pilots Forecast Package



Updated: 2:00 PM CT

Friday, January 6, 2023

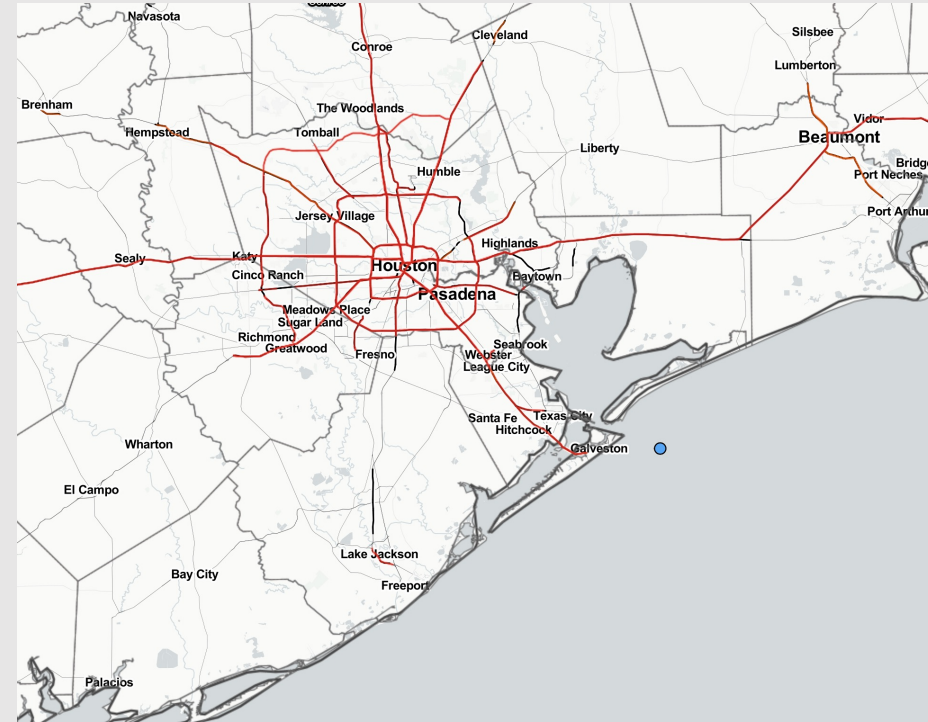
Forecaster: Alyssa McClung

Weather Headlines

➤ **Lower confidence, however favoring patchy dense fog tomorrow AM. View visibility slide of more details.**

➤ **Favoring a dry today with next rain chance being tomorrow afternoon.**

➤ **Tonight and the during the day Sunday are two windows to watch for slightly elevated winds at the boarding station.**



Radar/NWS Alerts: 2:00 PM CT



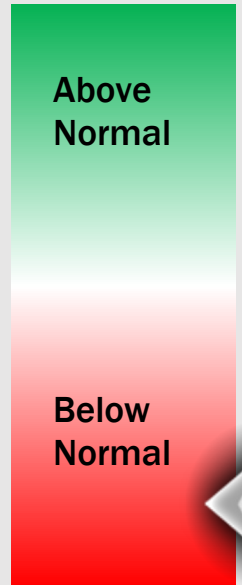
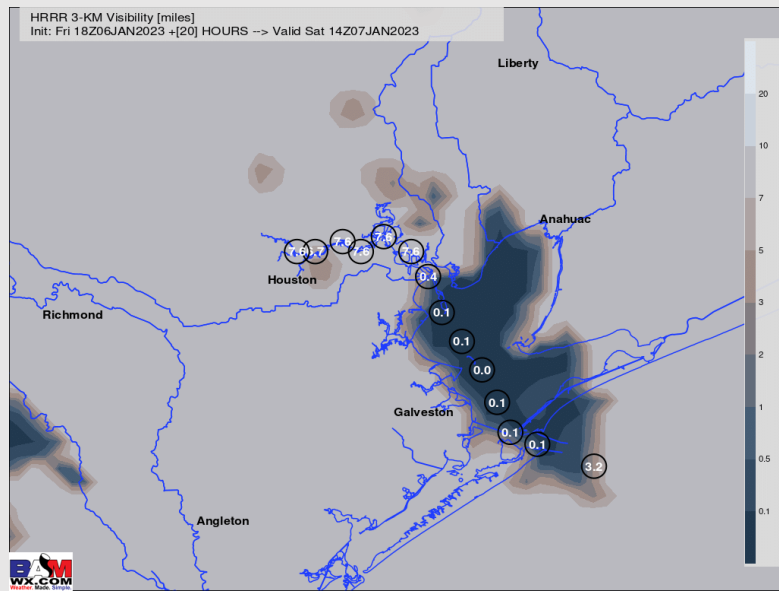
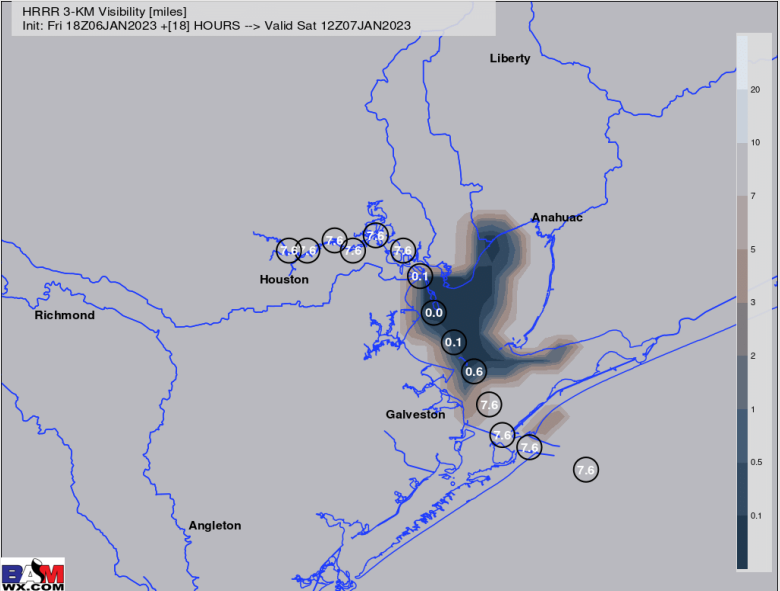
As always, please do not hesitate to reach out to us with any forecast questions via the chat option on the Weather Porthole or our on-call number, **(317)-560-8122** press 1 for forecast questions.

Houston Pilots Visibility Report



6 AM CT SAT VISIBILITY 8 AM CT SAT VISIBILITY

Confidence



TIME	THREAT
4 AM SAT – 10 AM SAT	MEDIUM

- Lower confidence for exact onset and coverage of this fog.
- Favoring development of patchy dense fog to begin around ~4 AM and continuing through ~10 AM tomorrow.
- Anticipating stations south of Morgan’s Point to be most at risk for reduced visibilities of less than 0.5 mile, while stations North of Morgan’s Point at risk for visibilities of less than 2 miles.

Houston Pilots Extended Range Visibility Report



Monday 1/9/23

Winds will be from the NW in the AM hours but could begin to veer back from the SE by the late evening. Winds will not be SE long enough to bring enough moisture in for fog potential.



Tuesday 1/10/23

Winds out of the E/NE should keep fog risk at a minimum throughout the day on Tuesday.



Wednesday 1/10/23

Worth keeping eyes on Wednesday for a patchy fog risk. This does not look to be sea fog, but rather your typical “radiation” that would lift just after daybreak.



Chance for Reduced Visibility

Monday AM	Unlikely
Monday PM	Unlikely
Tuesday AM	Unlikely
Tuesday PM	Unlikely
Wednesday AM	Possible
Wednesday PM	Unlikely

Houston Pilots Visibility Report



Time	Fri 12pm	Fri 1pm	Fri 2pm	Fri 3pm	Fri 4pm	Fri 5pm	Fri 6pm	Fri 7pm	Fri 8pm	Fri 9pm	Fri 10pm	Fri 11pm	Sat 12am	Sat 1am	Sat 2am	Sat 3am	Sat 4am	Sat 5am	Sat 6am	Sat 7am	Sat 8am	Sat 9am	Sat 10am	Sat 11am	Sat 12pm	Sat 1pm	Sat 2pm	Sat 3pm	Sat 4pm	Sat 5pm	Sat 6pm	Sat 7pm	Sat 8pm	Sat 9pm	Sat 10pm	Sat 11pm				
610 Bridge	10	10	10	10	10	10	10	10	10	10	9	8	8	8	7	8	6	4	3	2	3	7	10	10	10	10	10	10	10	10	10	10	10	10	10	10	6	5		
Kinder 1	10	10	10	10	10	10	10	10	10	10	9	8	8	8	7	9	7	5	4	4	4	8	10	10	10	10	10	10	10	10	10	10	10	10	10	10	10	6	5	
Greens Bayou	10	10	10	10	10	10	10	10	10	10	9	8	8	7	7	9	7	6	6	5	6	8	10	10	10	10	10	10	10	10	10	10	10	10	10	10	10	6	5	
Shell Crude	10	10	10	10	10	10	10	10	10	10	9	8	8	8	7	10	8	8	8	8	8	9	10	10	10	10	10	10	10	10	10	10	10	10	10	10	10	6	4	
Lynchburg Ferries	10	10	10	10	10	10	10	10	10	10	9	8	8	8	7	10	8	8	8	8	8	9	10	10	10	10	10	10	10	10	10	10	10	10	10	10	10	10	6	4
Exxon 3	10	10	10	10	10	10	10	10	10	10	9	8	8	8	8	10	9	8	8	8	8	9	10	10	10	10	10	10	10	10	10	10	10	10	10	10	10	10	6	4
Morgans Point	10	10	10	10	10	10	10	10	10	10	9	8	8	8	8	10	9	8	8	8	8	9	10	10	10	10	10	10	10	10	10	10	10	10	10	10	10	10	6	4
75/76	10	10	10	10	10	10	10	10	10	9	9	8	8	8	8	10	9	8	8	8	8	9	10	10	10	10	10	10	10	10	10	10	10	10	10	10	10	10	6	6
63/64	10	10	10	10	10	10	10	9	9	9	9	9	8	8	8	10	9	9	8	8	8	9	10	10	10	10	10	10	10	10	10	10	10	10	10	10	10	10	7	6
51/52	10	10	10	10	10	10	9	9	9	9	9	9	9	8	8	10	10	10	8	8	8	10	10	10	10	10	10	10	10	10	10	10	10	10	10	10	10	9	7	7
37/38	10	10	10	10	10	10	9	9	9	9	9	9	9	9	9	10	10	10	8	8	8	9	10	10	10	10	10	10	10	10	10	10	10	10	10	10	10	9	7	7
25/26	10	10	10	10	10	10	9	9	9	9	9	9	9	9	9	10	10	10	8	8	8	10	10	10	10	10	10	10	10	10	10	10	10	10	10	10	10	8	7	7
11/12	10	10	10	10	10	10	9	9	9	9	9	9	9	9	9	10	10	10	8	8	8	10	10	10	10	10	10	10	10	10	10	10	10	10	10	10	9	7	7	
1 & 2 Bravo	9	9	9	9	9	9	9	9	9	9	9	9	9	8	8	10	9	9	8	8	8	9	9	9	9	9	9	9	9	8	9	9	9	9	9	8	7	7		

Refer to the slides above for the official BAM thinking. The chart here is not 100% perfect.

Houston Pilots Wind Report



Example

Sustained wind 13 Knots

Gusts 18 Knots

Wind from the N

WS: 13
G:18
N

Time Knots	Fri 12pm	Fri 1pm	Fri 2pm	Fri 3pm	Fri 4pm	Fri 5pm	Fri 6pm	Fri 7pm	Fri 8pm	Fri 9pm	Fri 10pm	Fri 11pm	Sat 12am	Sat 1am	Sat 2am	Sat 3am	Sat 4am	Sat 5am	Sat 6am	Sat 7am	Sat 8am	Sat 9am	Sat 10am	Sat 11am	Sat 12pm	Sat 1pm	Sat 2pm	Sat 3pm	Sat 4pm	Sat 5pm	Sat 6pm	Sat 7pm	Sat 8pm	Sat 9pm	Sat 10pm	Sat 11pm	
610 Bridge	8	9	10	10	10	9	7	5	5	5	5	5	4	3	4	5	4	3	3	3	3	4	5	6	7	7	8	7	7	7	6	5	4	4	4	4	
	12	14	15	15	16	17	16	13	11	12	12	13	12	12	13	10	9	7	5	5	4	6	9	11	11	11	11	11	11	12	11	10	8	8	8	8	
	S	S	S	S	S	S	SSE	SSE	SSE	SSE	SSE	SSE	SSE	SSE	SSE	S	SSE	SSE	SSE	SE	SE	SSE	S	S	S	S	SSE	SSE	SSE	SSE	SSE	SSE	SSE	SSE	SSE	SSE	
Kinder 1	7	9	10	10	10	9	7	5	5	5	5	5	4	3	4	5	4	3	3	3	3	4	5	6	7	7	8	7	8	8	8	6	5	4	4	4	
	12	14	15	15	16	17	16	13	11	12	12	13	12	12	13	10	9	7	5	5	4	6	9	10	11	11	11	11	11	12	11	10	9	8	8	8	
	S	S	S	S	S	S	SSE	SSE	SSE	SSE	SSE	SSE	SSE	SSE	SSE	S	SSE	SE	SE	SE	SE	SSE	S	S	S	S	SSE	SSE	SSE	SSE	SSE	SSE	SSE	SSE	SSE	SSE	
Greens Bayou	6	9	10	10	10	9	7	5	5	5	5	5	4	3	4	5	4	3	3	3	3	4	5	6	6	7	8	7	8	8	6	5	4	4	4	4	
	11	13	15	15	16	17	14	11	11	12	13	13	13	12	13	10	9	7	5	5	4	6	8	10	10	10	11	10	11	12	11	10	9	8	8	7	
	SSE	SSE	S	S	S	S	SSE	SSE	SSE	SSE	SSE	SSE	SSE	SSE	SSE	SSE	S	SSE	SE	SE	SE	SSE	S	S	S	SSE	SSE	SSE	SSE	SSE	SSE	SSE	SSE	SSE	SSE	SSE	
Shell Crude	7	9	10	10	10	9	6	5	5	5	5	5	4	3	4	5	4	4	3	3	3	4	5	6	6	7	8	7	8	8	6	5	4	4	4	3	
	12	13	15	16	16	17	14	11	12	13	13	14	13	13	13	10	9	7	5	5	5	6	8	10	10	10	10	11	11	12	11	10	9	7	7	7	
	SSE	SSE	SSE	S	S	SSE	SSE	SSE	SSE	SSE	SSE	SSE	SSE	SSE	SSE	S	SSE	SE	SE	SE	SE	SSE	SSE	S	S	SSE	SSE	SSE	SSE	SSE	SSE	SSE	SSE	SSE	SSE	SSE	
Lynchburg Ferries	7	9	9	9	9	8	6	6	6	6	6	6	5	3	4	5	5	4	4	3	3	4	5	6	6	7	8	8	8	8	6	5	5	4	4	4	
	13	14	15	16	17	18	13	11	12	13	14	14	13	13	14	10	9	7	5	5	5	6	8	10	9	10	10	11	12	11	10	9	8	8	8	7	
	SSE	SE	SSE	SSE	S	SSE	SSE	SSE	SSE	SSE	SSE	SSE	SSE	SSE	SSE	SSE	SSE	SSE	SSE	SE	SE	SE	SSE	SSE	SSE	SSE	SSE	SSE	SE	SSE	SSE	SSE	SSE	SSE	SSE	SSE	SSE
Exxon 3	6	8	9	8	8	7	6	6	6	6	7	6	4	4	6	5	4	4	3	3	4	5	6	6	7	8	8	8	8	6	5	5	4	4	4	4	
	13	14	15	16	17	17	12	11	14	15	15	15	15	13	14	10	9	7	6	5	5	6	8	9	9	10	11	11	12	12	11	10	9	8	8	7	
	SSE	SE	SSE	SSE	SSE	SSE	SSE	SSE	SSE	SSE	SSE	SSE	SSE	SSE	SSE	SSE	SSE	SSE	SE	SE	SE	SE	SSE	SSE	SSE	SSE	SSE	SSE	SSE	SSE	SSE	SSE	SSE	SSE	SSE	SSE	SSE
Morgans Point	5	7	8	8	8	8	7	7	7	8	8	8	7	6	5	6	6	5	4	4	4	4	5	6	6	7	8	8	8	7	6	5	5	4	4	4	
	13	14	15	15	16	16	12	13	15	16	16	16	16	15	14	11	10	8	7	6	6	6	8	9	9	10	11	12	12	11	10	10	8	8	8	8	
	SE	SE	SSE	SSE	SSE	SSE	SSE	SSE	SSE	SSE	SSE	SSE	SSE	SSE	SSE	S	SSE	SSE	SE	SE	SE	SE	SSE	SSE	SSE	SSE	SSE	SE	SE	SE	SE	SSE	SSE	SSE	SSE	SSE	SSE
75/76	5	8	8	9	9	9	9	9	9	10	9	10	9	8	7	8	7	6	5	5	5	5	6	7	7	8	9	9	8	7	6	6	5	5	5	5	
	12	14	15	15	16	15	13	15	17	17	18	17	16	15	13	11	10	8	7	7	7	8	9	9	10	11	12	12	11	11	10	10	9	9	9	9	
	SE	SE	SE	SSE	SSE	SSE	SSE	SSE	SSE	SSE	SSE	SSE	SSE	SSE	SSE	S	SSE	SSE	SE	SE	SE	SE	SE	SE	SE	SE	SE	SE	SE	SE	SE	SE	SE	SE	SE	SE	
63/64	7	9	9	9	9	9	10	10	10	10	10	11	10	10	9	9	8	7	6	6	6	6	6	6	7	8	8	9	9	8	7	7	7	6	5	5	
	12	14	15	15	15	13	13	16	17	17	18	19	18	17	16	13	11	10	9	8	7	7	8	9	9	10	11	12	11	11	10	10	10	10	9	9	
	SE	SE	SSE	SSE	SSE	SSE	SSE	SSE	SE	SSE	SSE	SSE	SSE	SSE	SSE	S	SSE	SSE	SSE	SSE	SE	SE	SE	SE	SE	SE	SE	SE	SE	SE	SE	SE	SSE	SSE	SSE	SSE	SSE
51/52	8	9	9	9	9	9	10	10	10	10	11	11	11	10	9	9	8	7	6	6	6	6	6	6	7	7	8	9	8	8	8	7	6	6	6	6	
	12	14	15	15	14	12	13	16	17	18	19	19	18	17	13	12	11	10	8	7	7	7	8	8	9	10	10	11	11	10	10	10	10	10	10	10	
	SE	SE	SSE	SSE	SSE	SSE	SSE	SE	SSE	SSE	SSE	SSE	SSE	SSE	SSE	S	SSE	SSE	SSE	SSE	SE	SE	SE	SE	SE	SE	SE	SE	SE	SE	SE	SE	SE	SE	SE	SE	
37/38	8	8	9	9	9	9	9	9	9	10	10	11	11	10	9	10	9	8	7	7	6	6	6	6	7	7	8	8	8	8	8	7	7	6	6	6	
	11	13	14	15	14	11	13	16	17	18	18	19	19	18	14	12	11	10	9	8	7	8	8	9	10	10	10	10	10	10	10	10	10	10	10	10	
	SE	SE	SSE	S	SSE	SSE	SSE	SE	SSE	SSE	SSE	SSE	SSE	SSE	SSE	S	SSE	SSE	SSE	SSE	SE	SE	SE	SE	SE	SE	SE	SE	SE	SE	SE	SE	SE	SE	SE	SE	SE
25/26	8	8	8	8	8	8	8	8	8	8	9	10	10	10	10	9	10	9	8	7	7	6	6	6	7	7	7	8	8	8	7	7	6	6	6	6	
	11	13	14	14	13	11	13	15	16	17	18	19	19	18	14	12	11	10	9	8	8	8	8	8	8	9	9	9	10	10	10	10	10	10	10	9	
	SE	SSE	SSE	S	SSE	SSE	SE	SE	SE	SSE	SSE	SSE	SSE	SSE	SSE	SSE	SSE	SSE	SSE	SSE	SSE	SSE	SSE	SSE	SSE	SE	SE	SE	SE	SE	SE	SE	SE	SE	SE	SE	SE
11/12	8	8	8	7	7	7	8	9	9	9	10	11	11	10	9	10	10	9	8	7	7	7	7	7	7	7	8	8	8	8	8	8	8	8	8	7	7
	12	14	14	14	12	12	14	16	17	18	19	20	20	20	19	14	13	11	10	9	8	8	8	8	8	9	10	10	10	10	11	11	11	10	10	10	
	SE	SE	SSE	SSE	SSE	SSE	SE	SE	SE	SE	SSE	SSE	SSE	SSE	SSE	SSE	SSE	SSE	SSE	SSE	SSE	SSE	SSE	SSE	SE	SE	SE	SE	SE	SE	SE	SE	SE	SE	SE	SE	SE
1 & 2 Bravo	8	8	8	8	7	8	9	10	11	12	12	13	12	10	12	11	10	9	9	9	8	8	8	8	8	8	9	9	9	9	9	9	9	9	8	8	
	13	14	14	13	13	14	15	17	18	20	21	22	21	20	16	14	13	12	11	10	9	9	10	10	9	9	10	11	11	12	12	12	12	13	12	12	
	SE	SE	SSE	SSE	SSE	SE	SE	SE	SE	SE	SSE	SSE	SSE	SSE	SSE	SSE	SSE	SSE	SSE	SSE	SSE	SSE	SE	SE	SE	SE	SE	SE	SE	SE	SE	SE	SE	SE	SSE	SSE	SSE

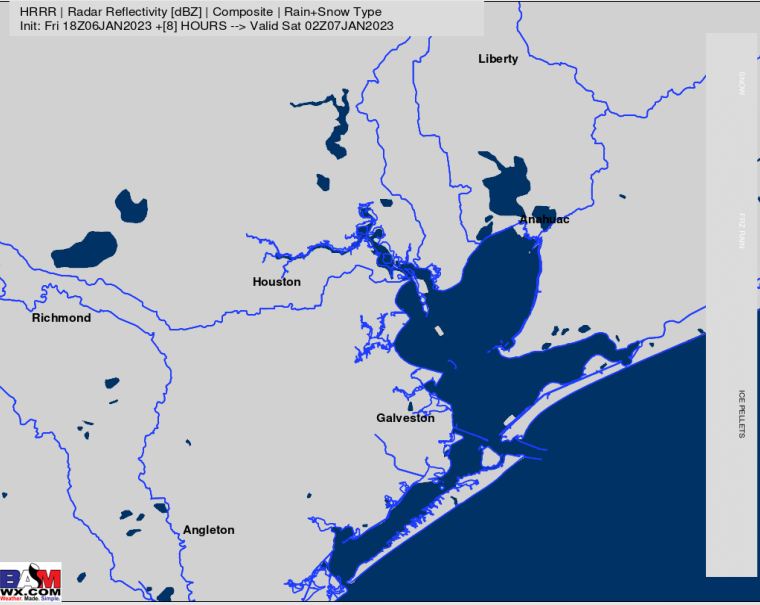
Houston Pilots: Fri. 1/6/2023



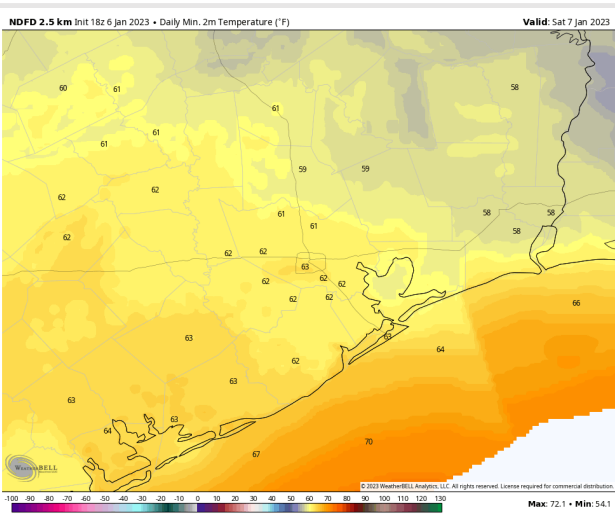
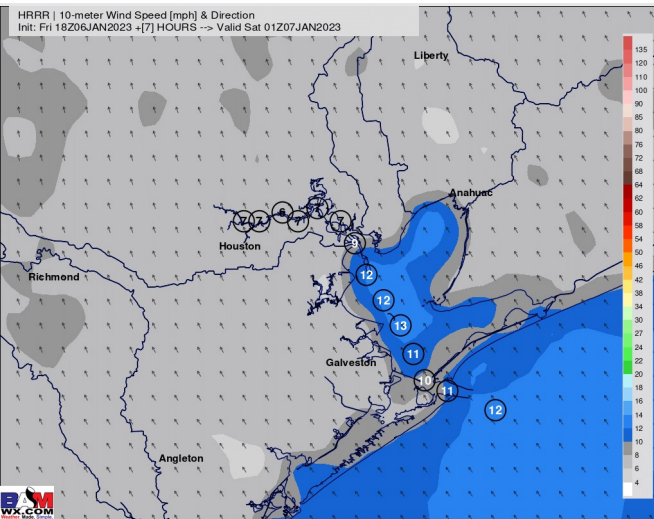
Forecast Discussion

- Precip:** Expecting dry conditions for the rest of the day.
- Wind:** Sustained winds out of the SSE for the for the rest of the evening. From 2 – 6 PM, winds across the Bay and North of Morgan’s Point between 10 – 15 kts while winds South of stations 25/26 3 – 8 kts. After 6 PM, winds North of Morgan’s Point will calm to 3 – 8 kts with winds South of Morgan’s Point 10 – 15 kts.
- Temps:** Low temps Saturday morning in the mid to low 60s F for all stations.
- Visibility:** While fog is not expected this evening, the risk for quicker development of Saturday Morning’s fog cannot be ruled out.

Precip Forecast: 8 PM CT



Wind Speed
7 PM CT



Low Temps
Saturday AM

Houston Pilots: Sat. 1/7/2023



Forecast Discussion

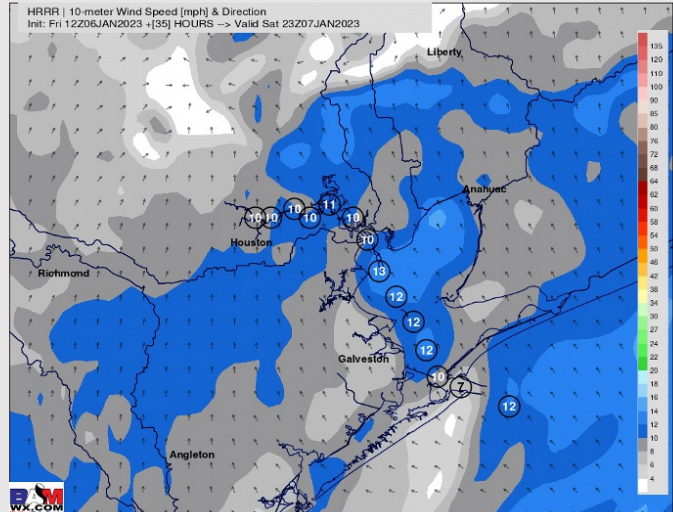
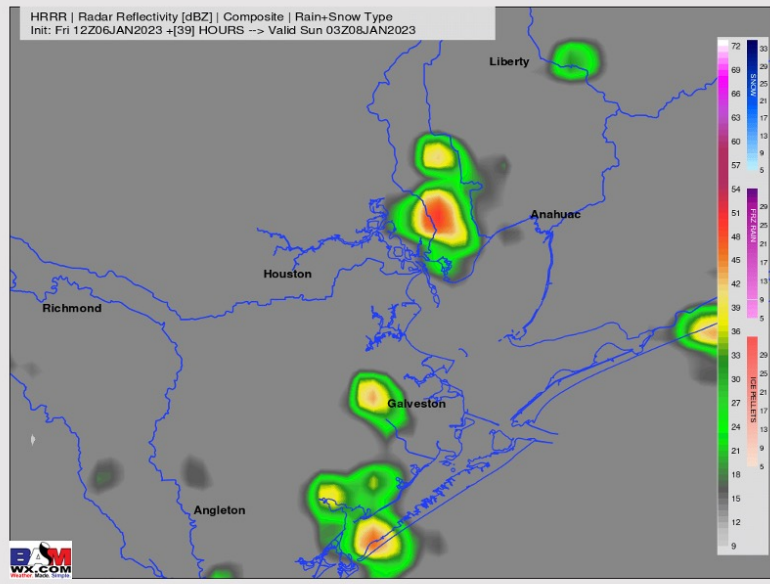
Precip: Dry conditions until 10 AM. After this, rain chances will increase to 20% as a few hit and miss rain showers move into the area. Chances then will increase closer to ~30% beyond 4-5 PM and will remain sporadic through the rest of the afternoon and evening hours.

Wind: Winds will be sustained out of the S/SE and remain as such through the day today. Wind speeds will be at 10-15 kts until 6 AM. After 6 AM, winds calm down to 5-10 kts and eventually 8-13 kts by 7 PM at the boarding station. A locally higher gust to 15+ knots cannot be ruled out.

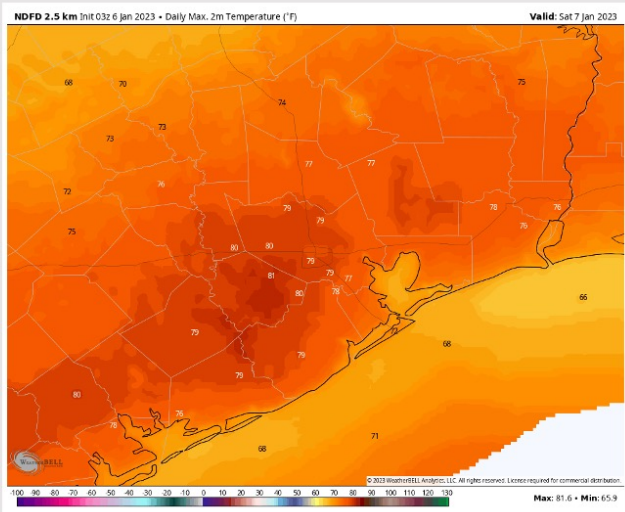
Temps: High temperatures Saturday will be in the mid to upper 60s F across all stations.

Visibility: Check visibility slides above for more on the thinking over the next 24-36 hours.

Precip Forecast: 9 PM CT



Wind Speed
6 PM CT



High Temps
Saturday

Houston Pilots: Sun. 1/8/2023



Forecast Discussion

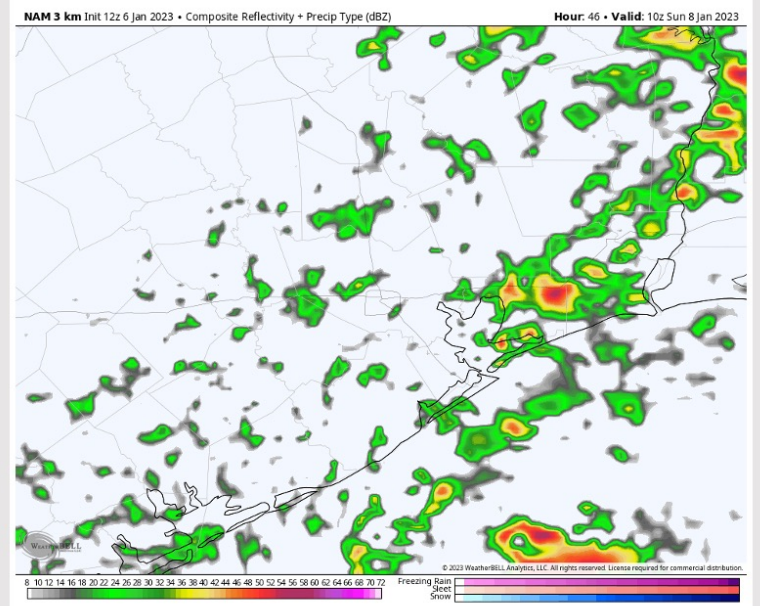
Precip: Favoring a 70-80% chance showers/thunderstorms early Sunday AM. After 8 AM precip will become a bit more scattered in nature (closer to 40-50%), and then precip looks to clear the area by ~1 PM.

Wind: Sustained winds will start out variable at 2-6kts early Sunday AM. After 5 AM, winds will shift to out of the NNE at 8-13 kts for the rest of the day (gusts to 15 knots possible at the boarding station).

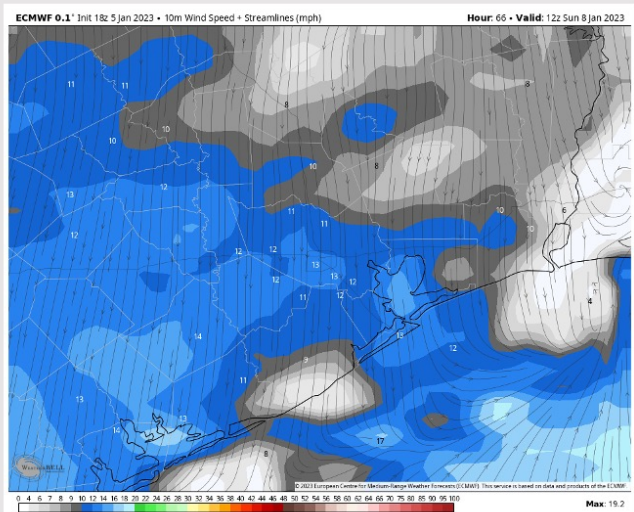
Temps: High temperatures Sunday in the lower 60s F across all stations.

Visibility: Reduced visibility via rain will be possible.

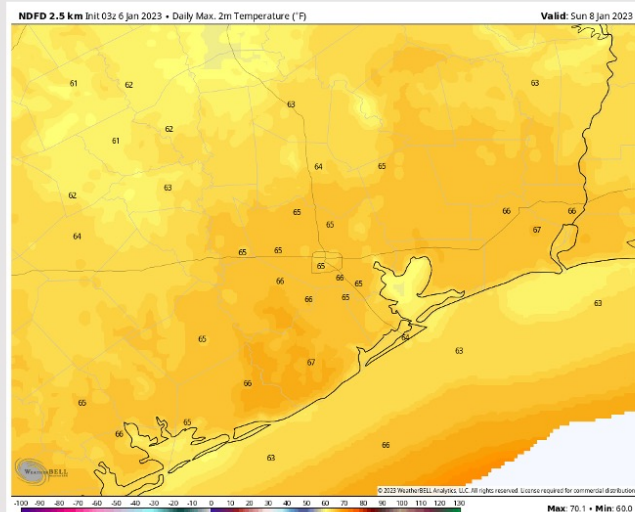
Precip Forecast: 5 AM CT



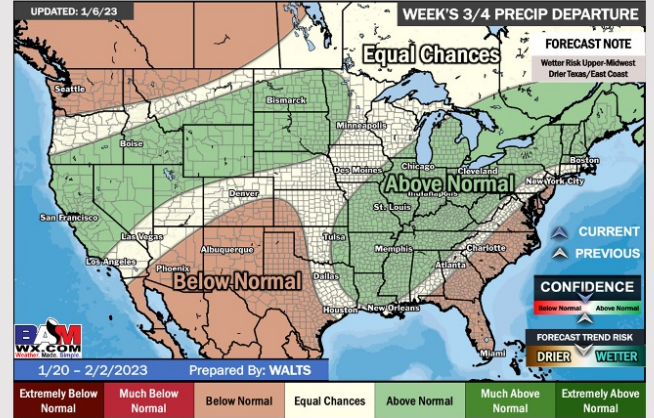
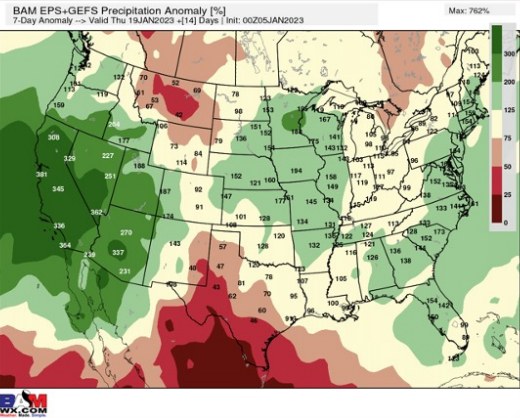
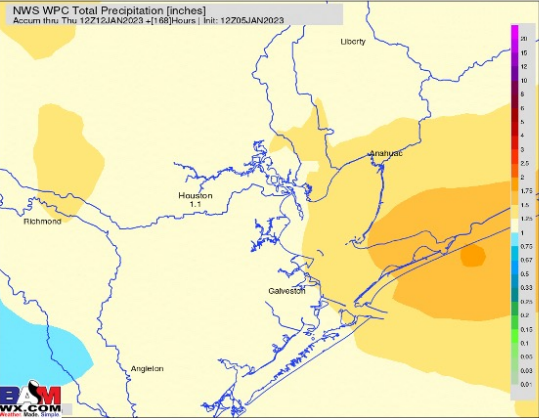
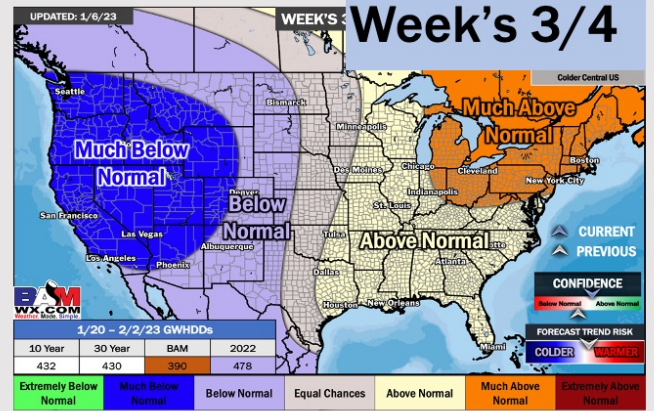
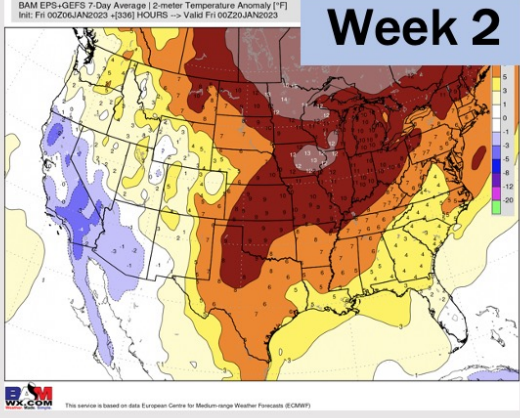
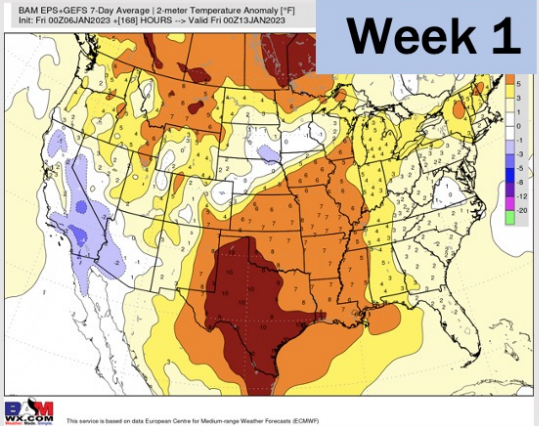
Wind Speed
6 AM CT



High Temps
Sunday



Houston Pilots: 1/6/23



- Watching late Saturday for increased rain chances that will continue into early next week. Expecting some low end rain chances middle of next week. Temps will continue to remain above average.
- Week 2 precipitation is expected to be near normal for the week 2 timeframe. Temperatures are to be above normal.
- Near normal precipitation chances and warmer weather is expected in the weeks 3/4 timeframe.