

Houston Pilots Forecast Package



Updated: 9:40 PM CT

Thursday, January 5, 2023

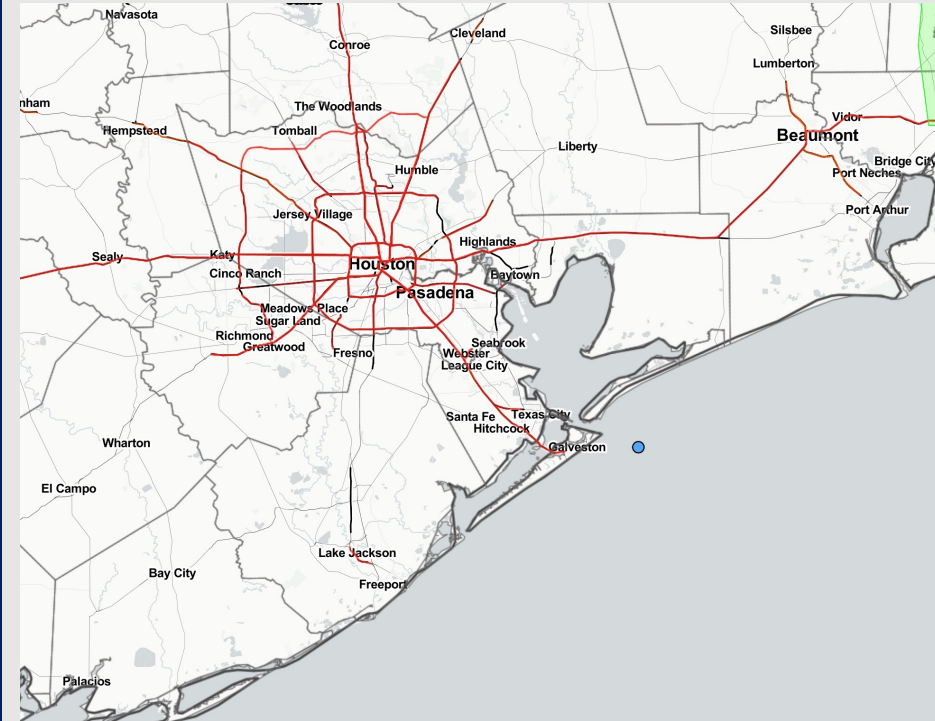
Forecaster: John Kemper

Weather Headlines

➤ **Low-Medium Risk of Patchy fog for Alpha/Bravo Pilot locations through Morgan's Point. Lower confidence at this time, see Visibility Slide for additional details!**

➤ Favoring a dry stretch over the next 2 days, with next rain chance being SAT afternoon.

➤ Friday night and the day on Sunday are two windows to watch for elevated winds at the boarding station.



Radar/NWS Alerts: 9:40 PM CT



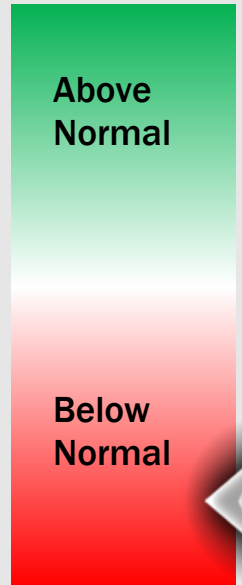
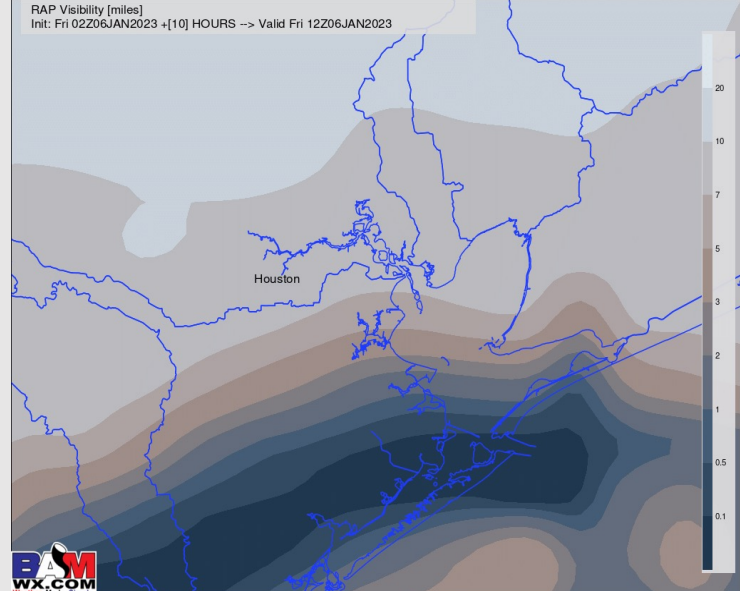
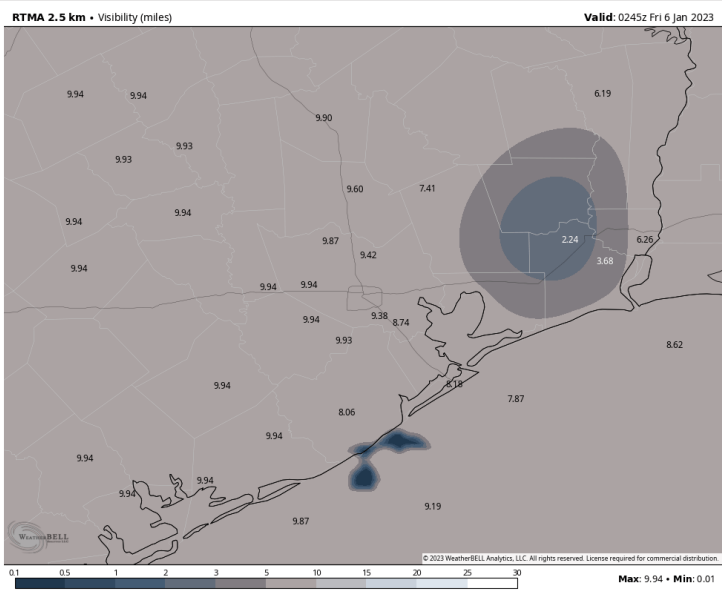
As always, please do not hesitate to reach out to us with any forecast questions via the chat option on the Weather Porthole or our on-call number, **(317)-560-8122** press 1 for forecast questions.

Houston Pilots Visibility Report



9:40PM-CT – Current VISIBILITY 6 AM CT FRI VISIBILITY

Confidence



TIME	THREAT
3 AM FRI – 8 AM FRI	Low - Med

- High-Resolution models projecting winds to shift out of the southeast earlier than anticipated. This will present a risk for patchy fog for the outer bay areas, Alpha/Bravo Stations through Morgan’s Point
- Dense fog with visibilities less than a mile will be possible from 3AM-CT to 8AM-CT, with lower confidence regarding exact timing. Favoring majority of fog to dissipate shortly after dawn at this time.
- Greater risk for dense fog remains just to the southeast of pilot stations, which is why a quick timetable for winds shifting out of the southeast extends some risk toward Galveston Bay
- Greater confidence exists for potential fog event Friday evening into Saturday AM (See Next Slide)

Houston Pilots Visibility Report

REDUCED VISIBILITY RISK – Friday After Sundown Through Saturday Morning

- Model data continuing to struggle with this potential event; **however the threat cannot be completely ruled out as winds remain out of the SE creating more favorable conditions for sea fog.**
- The sea fog threat is for late Friday evening into early Saturday AM and is favored to be patchy in nature and locally dense at times if developed.
- If fog occurs, favoring the threat to begin at the Boarding Station then gradually work into the Galv. Bay. Stations north of Morgan's Point would have a better chance to see fog Saturday AM.
- Low confidence on timing, coverage and likelihood of this sea fog risk.

THREAT

Low - Med

Confidence

Above
Normal

Below
Normal

Houston Pilots Extended Range Visibility Report



Sunday 1/8/23

The fog threat will be possible into the AM hours, however rain works back into the picture and that will likely be the main reduced visibility threat on the day Sunday.



Monday 1/9/23

Winds will be from the NW in the AM hours but could begin to veer back from the SE by the late evening.



Tuesday 1/10/23

Winds out of the E/NE should keep fog risk at a minimum throughout the day on Tuesday.



Chance for Reduced Visibility

Sunday AM	Possible
Sunday PM	Unlikely
Monday AM	Unlikely
Monday PM	Unlikely
Tuesday AM	Unlikely
Tuesday PM	Unlikely

Houston Pilots Visibility Report



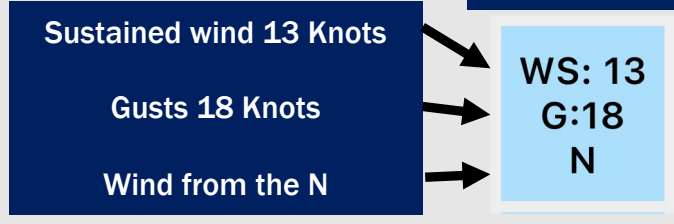
Time	Thu 8pm	Thu 9pm	Thu 10pm	Thu 11pm	Fri 12am	Fri 1am	Fri 2am	Fri 3am	Fri 4am	Fri 5am	Fri 6am	Fri 7am	Fri 8am	Fri 9am	Fri 10am	Fri 11am	Fri 12pm	Fri 1pm	Fri 2pm	Fri 3pm	Fri 4pm	Fri 5pm	Fri 6pm	Fri 7pm	Fri 8pm	Fri 9pm	Fri 10pm	Fri 11pm	Sat 12am	Sat 1am	Sat 2am	Sat 3am	Sat 4am	Sat 5am	Sat 6am	Sat 7am	
610 Bridge	10	10	10	10	10	10	10	10	10	10	10	10	10	10	10	10	10	10	10	10	10	10	10	10	10	10	10	10	10	10	10	10	10	10	10	10	10
Kinder 1	10	10	10	10	10	10	10	10	10	10	10	10	10	10	10	10	10	10	10	10	10	10	10	10	10	10	10	10	10	10	10	10	10	10	10	10	10
Greens Bayou	10	10	10	10	10	10	10	10	10	10	10	10	10	10	10	10	10	10	10	10	10	10	10	10	10	10	10	10	10	10	10	10	10	10	10	10	10
Shell Crude	10	10	10	10	10	10	10	10	10	10	10	10	10	10	10	10	10	10	10	10	10	10	10	10	10	10	10	10	10	10	10	10	10	10	10	10	10
Lynchburg Ferries	10	10	10	10	10	10	10	10	10	10	10	10	10	10	10	10	10	10	10	10	10	10	10	10	10	10	10	10	10	10	10	10	10	10	10	10	10
Exxon 3	10	10	10	10	10	10	10	10	10	10	10	10	10	10	10	10	10	10	10	10	10	10	10	10	10	10	10	10	10	10	10	10	10	10	10	10	10
Morgans Point	10	10	10	10	10	10	10	10	10	10	10	10	10	10	10	10	10	10	10	10	10	10	10	10	10	10	10	10	10	10	10	10	10	10	10	10	10
75/76	10	10	10	10	10	10	10	10	10	10	10	10	10	10	10	10	10	10	10	10	10	10	10	10	10	10	10	10	10	10	10	10	10	10	10	10	10
63/64	10	10	10	10	10	10	10	10	10	10	10	10	10	10	10	10	10	10	10	10	10	10	10	10	10	10	10	10	10	10	10	10	10	10	10	10	10
51/52	10	10	10	10	10	10	10	10	10	10	10	10	10	10	10	10	10	10	10	10	10	10	10	10	10	10	10	10	10	10	10	10	10	10	10	10	10
37/38	10	10	10	10	10	10	10	10	10	10	10	10	10	10	10	10	10	10	10	10	10	10	10	10	10	10	10	10	10	10	10	10	10	10	10	10	10
25/26	10	10	10	10	10	10	10	10	10	10	10	10	10	10	10	10	10	10	10	10	10	10	10	10	10	10	10	10	10	10	10	10	10	10	10	10	10
11/12	10	10	10	10	10	10	10	10	10	10	10	10	10	10	10	10	10	10	10	10	10	10	10	10	10	10	10	10	10	10	10	10	10	10	10	10	10
1 & 2 Bravo	10	10	10	10	10	10	10	10	10	10	10	10	10	10	10	10	10	10	10	10	10	10	10	10	10	10	10	10	10	10	10	10	10	10	10	10	10

Refer to the slides above for the official BAM thinking. The chart here is not 100% perfect.

Houston Pilots Wind Report



Example



Time Knots	Thu 8pm	Thu 9pm	Thu 10pm	Thu 11pm	Fri 12am	Fri 1am	Fri 2am	Fri 3am	Fri 4am	Fri 5am	Fri 6am	Fri 7am	Fri 8am	Fri 9am	Fri 10am	Fri 11am	Fri 12pm	Fri 1pm	Fri 2pm	Fri 3pm	Fri 4pm	Fri 5pm	Fri 6pm	Fri 7pm	Fri 8pm	Fri 9pm	Fri 10pm	Fri 11pm	Sat 12am	Sat 1am	Sat 2am	Sat 3am	Sat 4am	Sat 5am	Sat 6am	Sat 7am	
610 Bridge	3	3	3	3	3	3	3	3	3	4	4	3	2	2	3	7	8	9	10	10	10	10	8	8	8	7	7	7	7	6	5	4	4	3	3	3	
	7	6	7	8	8	8	9	11	12	11	9	5	9	9	8	11	12	13	15	15	15	15	15	13	11	12	11	12	12	11	10	10	8	7	5	8	8
Kinder 1	3	3	3	3	3	3	3	3	3	4	4	4	3	3	3	7	8	9	10	10	11	10	8	8	7	7	7	7	6	5	4	4	3	3	3		
	7	6	7	8	8	8	10	11	12	11	9	6	8	8	7	11	12	13	14	15	15	15	13	11	12	11	12	12	11	10	10	8	7	5	8	8	
Greens Bayou	3	3	3	3	3	3	3	3	3	4	4	4	3	3	3	7	8	9	10	10	11	10	8	8	8	8	8	7	6	5	4	4	3	3	3		
	6	6	6	8	7	8	10	11	12	11	10	7	7	8	7	11	11	13	14	15	15	15	12	12	12	11	12	12	12	11	10	10	8	7	5	8	8
Shell Crude	3	3	3	3	3	3	3	3	3	3	4	4	3	3	4	7	8	9	10	10	11	10	8	8	8	8	8	7	6	5	4	4	3	3	3		
	5	5	6	7	7	8	10	11	12	11	10	6	7	7	7	11	12	13	14	15	15	15	12	12	12	12	12	12	11	10	10	8	7	5	8	8	
Lynchburg Ferries	3	3	3	3	3	3	3	3	3	4	4	4	3	3	4	7	8	9	10	10	11	10	8	8	8	8	8	8	7	5	5	4	4	3	4		
	5	5	6	7	8	9	11	12	12	11	10	8	6	7	7	11	12	13	14	15	15	15	12	12	13	12	13	12	11	10	10	8	7	5	8	8	
Exxon 3	3	3	3	3	3	3	3	4	3	3	4	4	4	3	4	7	8	9	10	11	10	10	8	8	8	8	8	8	7	6	5	5	4	3	4		
	6	7	7	8	8	10	11	12	12	11	10	7	6	8	7	11	12	13	14	15	15	14	12	12	13	13	13	12	12	10	10	8	7	6	8	8	
Morgans Point	4	4	4	4	4	4	5	4	4	4	4	4	4	3	4	7	8	9	10	10	10	9	9	9	9	9	9	9	8	7	6	5	5	4	4		
	7	9	9	9	9	10	11	12	12	11	9	7	6	8	7	11	12	12	14	14	14	14	12	13	14	14	14	13	13	13	12	11	11	9	8	7	8
75/76	6	6	6	5	5	5	5	6	5	4	3	4	4	3	4	8	9	9	10	10	10	9	9	10	10	10	10	10	9	8	7	6	5	5	5		
	9	10	11	10	9	10	11	12	11	10	7	5	7	8	6	11	11	12	13	14	13	13	13	13	14	14	14	14	14	13	13	12	10	9	8	9	
63/64	7	7	7	6	6	6	5	6	5	4	4	4	4	3	3	8	9	9	10	10	10	10	10	10	11	11	11	11	11	10	10	9	8	7	6	5	
	10	11	11	11	10	11	11	12	11	9	6	5	7	8	6	11	11	12	13	13	13	13	13	13	14	15	15	15	14	14	14	13	11	10	9	9	
51/52	7	7	7	6	6	6	5	6	5	4	3	4	3	3	3	8	9	9	10	10	10	10	10	10	11	11	11	11	12	11	10	9	8	7	6	6	
	10	12	12	12	11	11	11	9	7	5	5	6	7	6	11	11	12	13	13	13	12	13	13	14	15	15	15	15	15	14	14	12	10	9	8	9	
37/38	7	6	6	5	5	5	5	4	4	3	3	3	3	3	3	8	9	9	9	10	10	10	10	10	11	11	12	12	12	12	11	11	10	9	8	6	6
	9	11	12	12	11	10	10	7	6	5	5	6	6	6	11	11	12	12	12	12	12	12	13	13	14	15	15	15	16	15	15	14	12	11	10	10	
25/26	6	5	6	5	4	5	5	4	3	2	3	3	4	4	8	9	9	9	9	10	10	10	10	10	11	12	12	12	12	11	10	8	8	7	6	6	
	8	10	12	11	10	9	10	8	6	5	5	6	6	6	10	11	11	11	12	12	12	12	13	14	15	16	16	16	15	15	14	12	11	10	11	11	
11/12	5	5	6	6	5	5	6	5	5	3	2	3	4	5	4	8	9	9	9	10	10	10	10	11	11	12	12	12	12	12	11	10	9	8	7	7	
	7	9	11	11	10	9	11	7	6	5	5	6	6	7	11	11	11	12	12	12	12	13	13	15	16	16	16	16	15	15	14	12	12	11	11	11	
1 & 2 Bravo	7	6	7	7	5	6	7	5	5	4	3	4	5	5	9	9	9	10	10	10	11	11	12	13	14	15	16	17	17	14	13	12	11	9	9	8	
	10	9	10	11	10	10	7	7	6	6	5	6	6	7	7	11	12	12	12	13	13	14	15	16	17	17	17	17	17	16	14	13	12	12	12		

Houston Pilots: Thu. 1/5/2023



Forecast Discussion

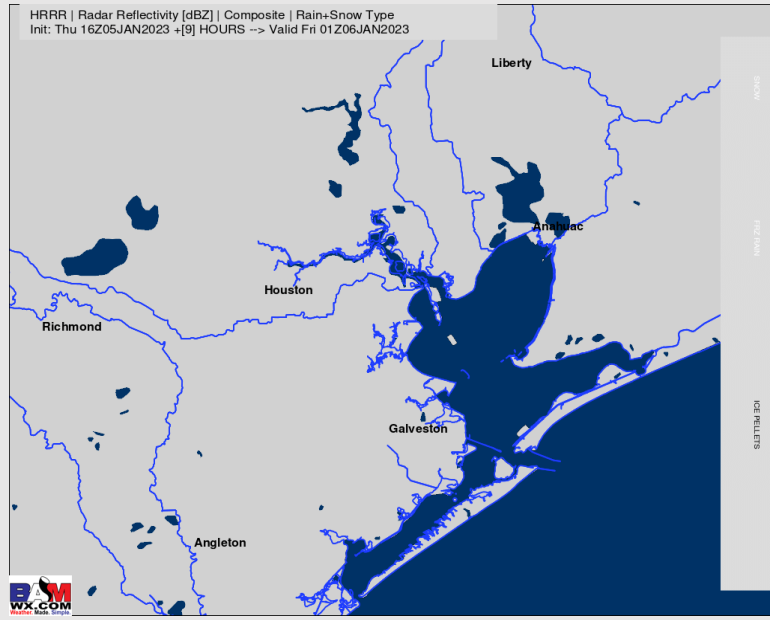
Precip: Anticipating dry conditions for remainder of period.

Wind: Winds variable and calm this afternoon. Favoring sustained winds this evening to veer out of the E/NE then flip to ESE near sundown and continue that way through the evening. Winds will be in the 3 – 8 kt range for most of the evening with an occasional 8-13 kt gusts.

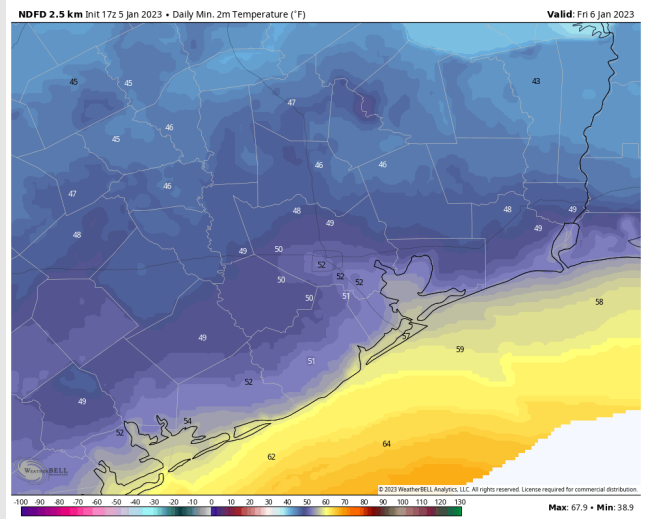
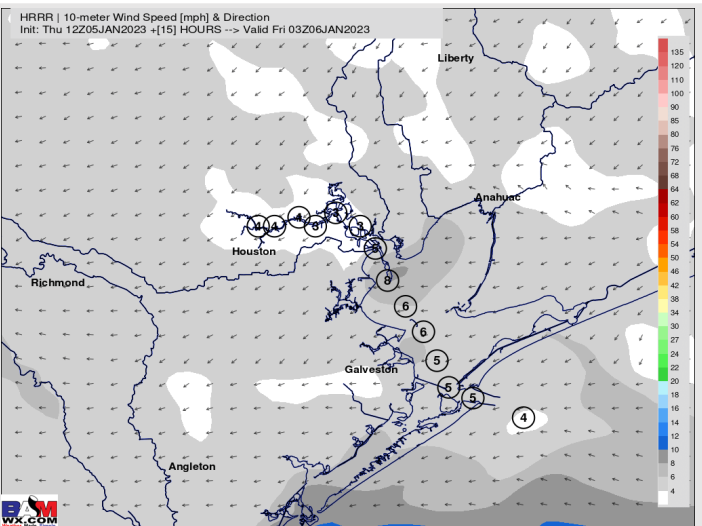
Temps: Low temperatures Friday AM in the upper 50s F at the Boarding Station and in the low 50s F for all other stations.

Visibility: See Visibility Slide for Additional Details

Precip Forecast: 7 PM CT



Wind Speed
9 PM CT



Low Temps
Friday AM

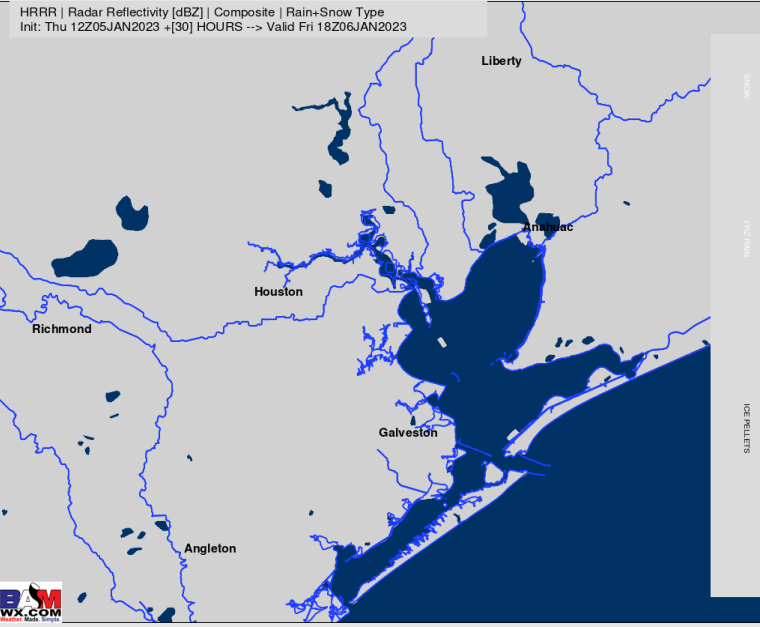
Houston Pilots: Fri. 1/6/2023



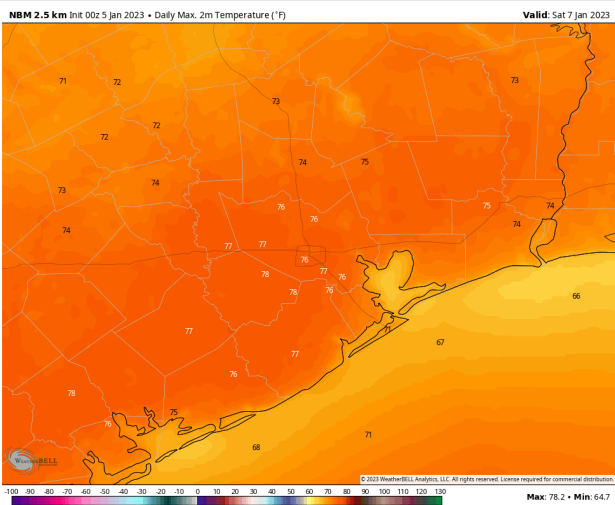
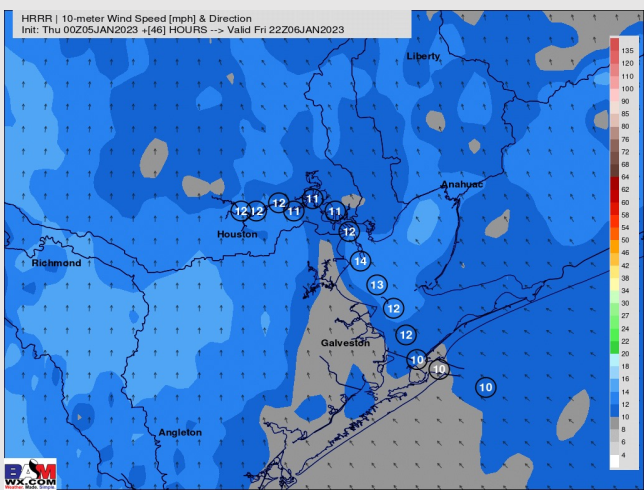
Forecast Discussion

- Precip:** Expecting dry conditions for Friday.
- Wind:** Winds will be sustained from the SE for the entire day with winds generally staying between 8 – 13 kts across all stations between 10 AM – 6 PM. After 6 PM winds will pick up slightly to 10-15 knots (15 - 20 kts gusts possible).
- Temps:** High temperatures Friday will be in the mid 70s F North of Morgan’s Point and in the mid to upper 60s F South of Morgan’s Point.
- Visibility:** While fog is not expected for most of the day, we do need to watch post sundown for a increasing fog threat given persistent SE winds. This fog risk would continue into the AM hours of Saturday. (Check visibility report on slide 2 for more detail)

Precip Forecast: 12 PM CT



Wind Speed
12 PM CT



High Temps
Friday

Houston Pilots: sat. 1/7/2023



Forecast Discussion

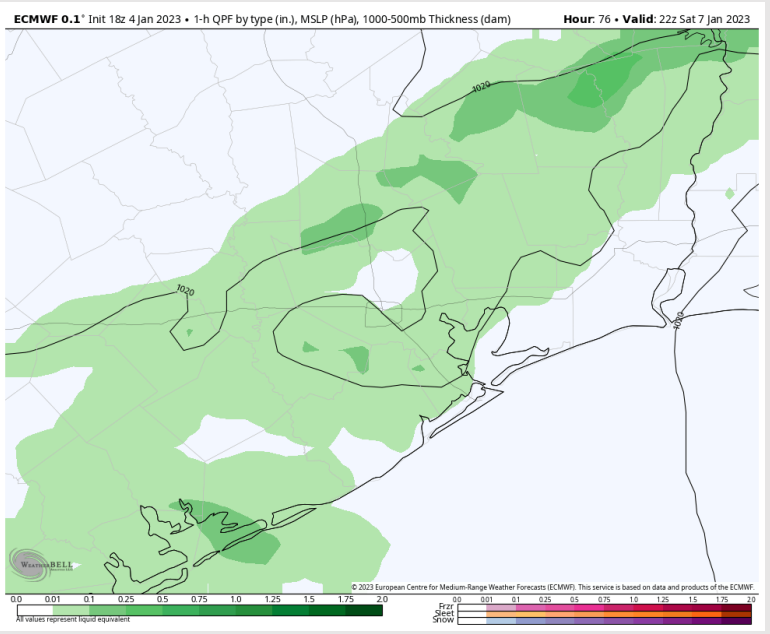
Precip: Dry conditions until 2 PM. After 2 PM, rain chances will increase to 60-70% as rain showers move into the area and will continue for the rest of the evening.

Wind: Winds will be sustained out of the S/SE during the AM hours, then shift to the NW by sundown. Wind speeds will be at 10-15 kts until 7 AM. After 7 AM, winds calm down to 7-12 kts and eventually 4-9 kts by 7 PM.

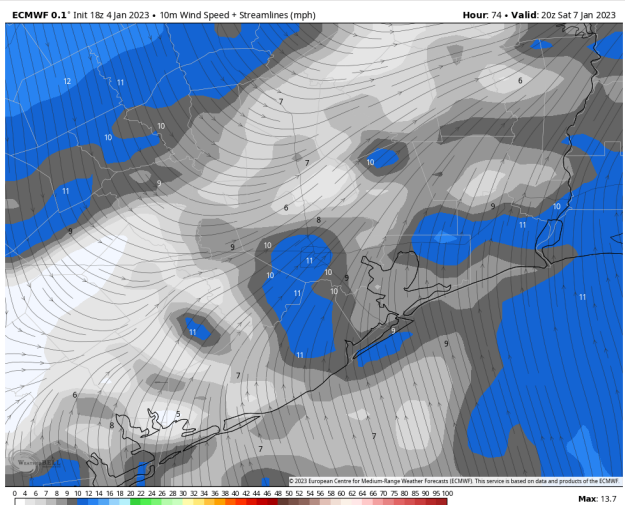
Temps: High temperatures Saturday will be in the mid to upper 60s F across all stations.

Visibility: The fog risk could possibly continue through the AM hours Saturday with persistent S/SE winds (check visibility report on slide 2). Rain is favored to work into the forecast which may help relieve the fog a bit here and there, but would still be dealing with reduced visibility (due to rain).

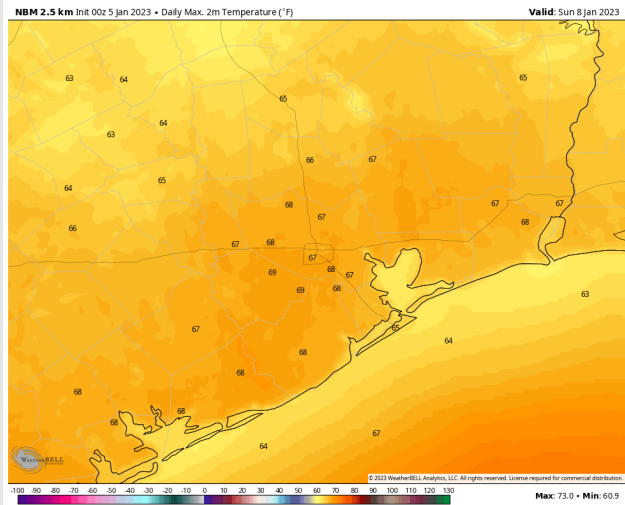
Precip Forecast: 4 PM CT



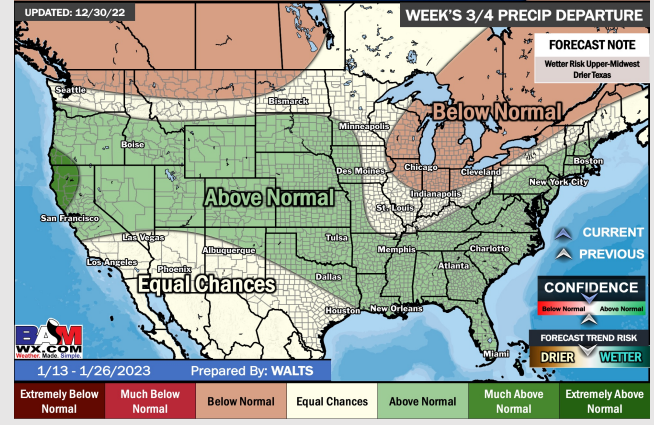
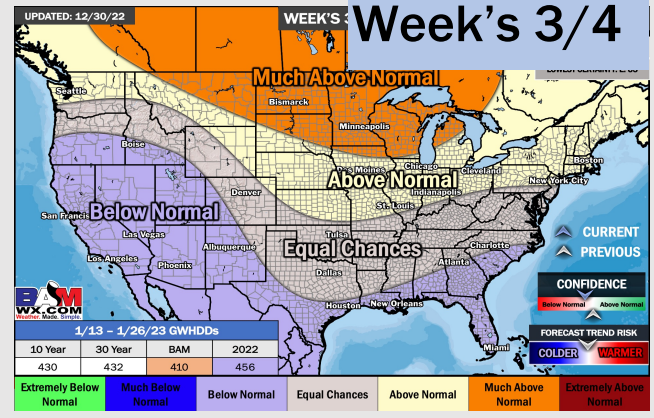
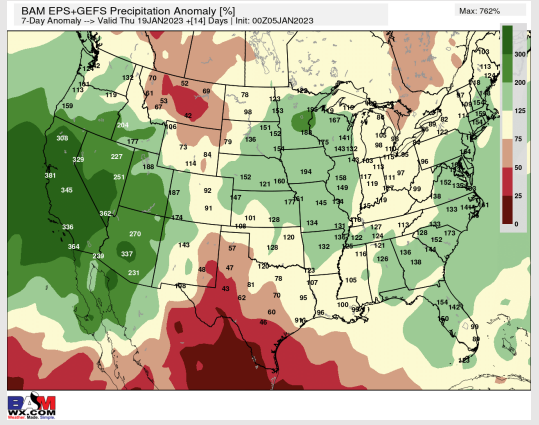
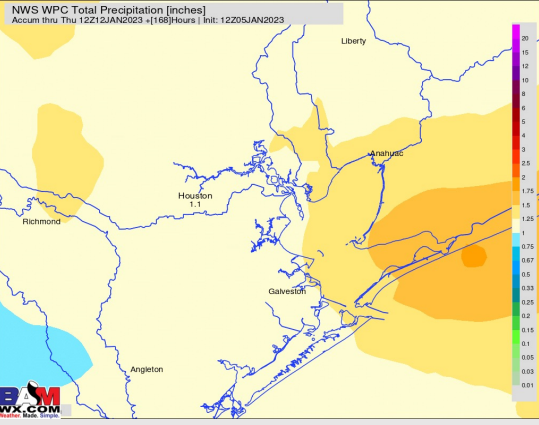
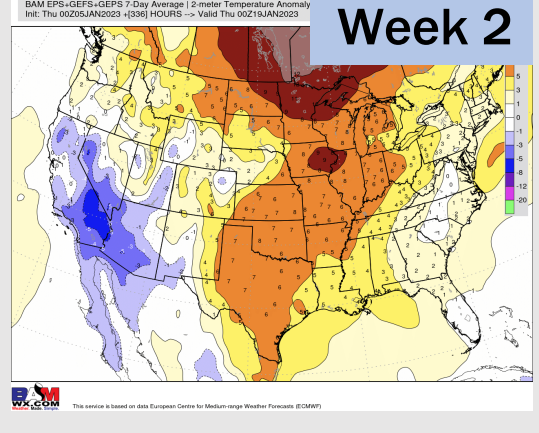
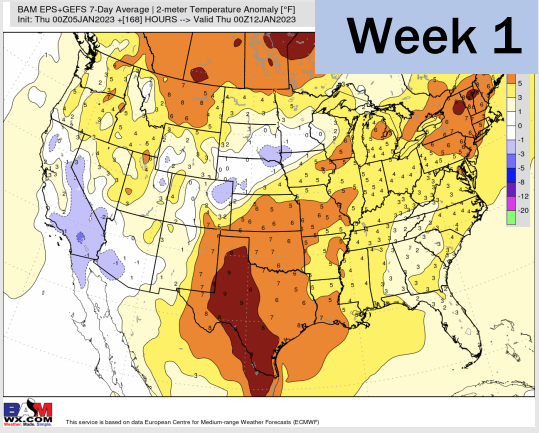
Wind Speed
6 PM CT



High Temps
Saturday



Houston Pilots: 1/5/23



- Expecting a drier end of the week. Eyeing Sunday – Tuesday for next shot of more widespread rains. Above average temps favored to continue.
- Week 2 precipitation is expected to be near normal for the week 2 timeframe. Temperatures are to be above normal.
- Near normal precip chances and cooler weather is expected in the weeks 3/4 timeframe.