

Houston Pilots Forecast Package



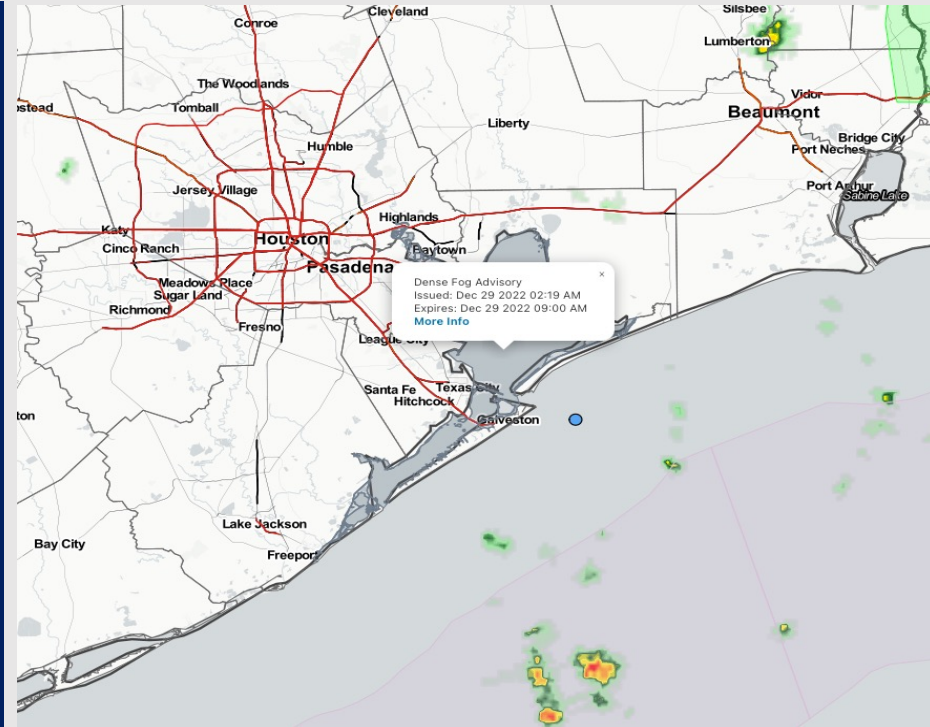
Updated: 5:00 AM CT

Thursday, December 29, 2022

Forecaster: Vince Bryan

Weather Headlines

- Rain chances today/tomorrow before a mainly drier weekend. Rain returns Mon/Tue of next week before things quiet down for the rest of the upcoming work week.
- **Reduced visibility will continue to be a concern over the course of the next several days. Details of each day will be laid out in the visibility slides below, but chances will stick around out through Sunday.**
- **We do not believe the data on the 36 hour visibility chart is correct, please reference slides below for official BAM thoughts.**
- Eyeing slightly elevated winds today and Friday, and again next Monday.
- **Wave heights at the boarding station could approach 4-6 feet between sundown tonight (Thursday) to mid-AM Friday.**



Radar/NWS Alerts: 5:00 AM CT



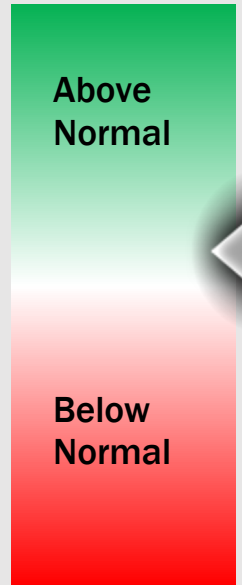
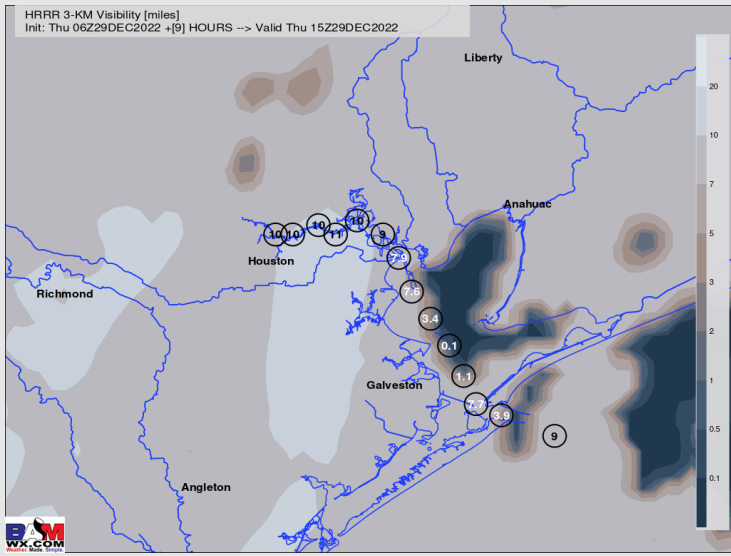
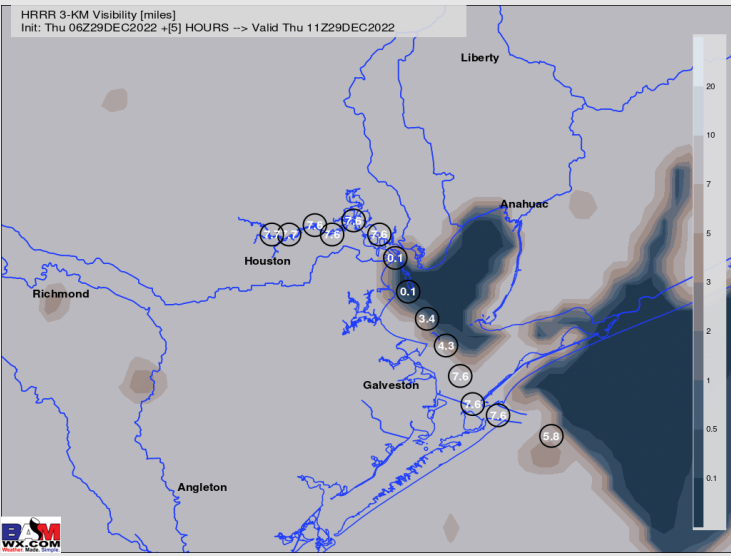
As always, please do not hesitate to reach out to us with any forecast questions via the chat option on the Weather Porthole or our on-call number, **(317)-560-8122** press 1 for forecast questions.

Houston Pilots Visibility Report



6 AM CT THU VISIBILITY 9 AM CT THU VISIBILITY

Confidence



TIME	THREAT
Current- 4 PM THU	MEDIUM

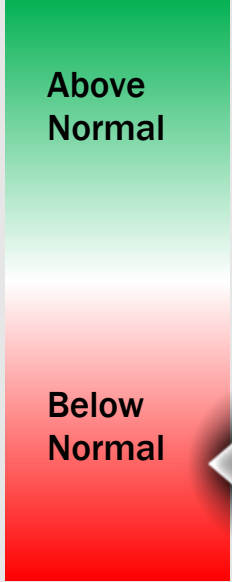
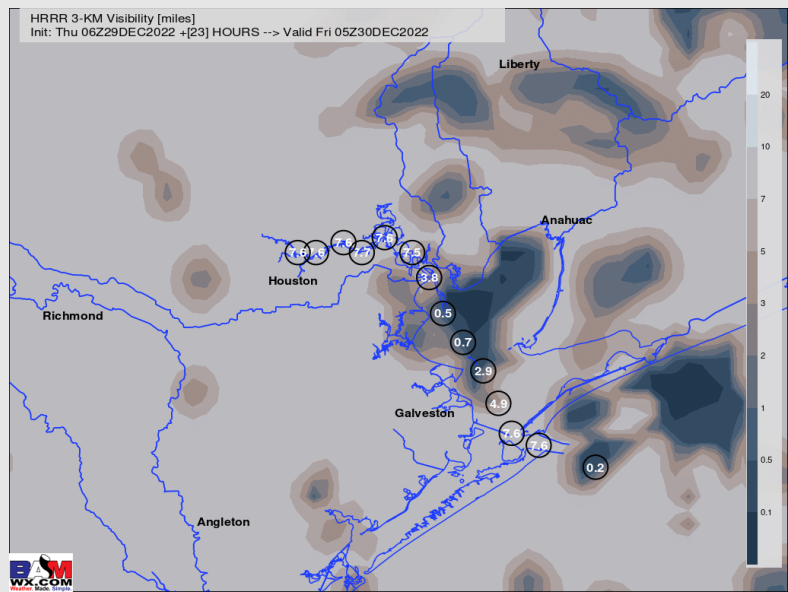
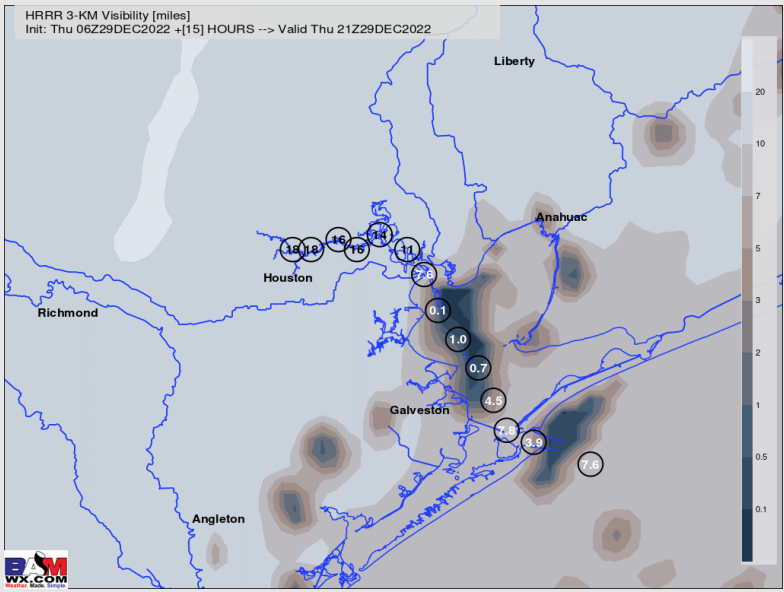
- **Reduced visibility will continue to be a concern over the next several hours by means of low clouds/mist/patchy fog for all stations.**
- Given slightly elevated winds, the boarding station may be able to *for the most part* avoid widespread dense fog. To be clear, patchy fog will still be possible, **but the better fog threat lies between Morgan's Point and 11/12.** Even without fog at the boarding station, visibilities of 2-4 miles are possible.
- The overall fog threat continues through ~10-11 AM before there can *start* to be an improvement in visibilities between Morgan's Point and 11/12. **There will still be a fog/reduced visibility threat beyond this, but 10 AM is when the threat of fog likely lowers some for the stations mentioned.**
- Between late morning – early afternoon, there's likely a better chance of visibility over a mile for most stations rather than <1 mile visibility via fog.

Houston Pilots Visibility Report



6 PM CT THU VISIBILITY 1 AM CT FRI VISIBILITY

Confidence



TIME	THREAT
5 PM THU – 8 AM FRI	MEDIUM

- **Very low confidence on specifics from this evening into Friday morning.**
- **The battle of dense fog development will be between warm air riding over cooler waters and winds coming from the SE most times, but on the other hand winds can vary at times in direction, wind speeds will not be consistent, and showers/thunderstorms can be in the area.**
- **Regardless of fog or not, this time period is likely time period is likely one where visibility reduction to 2-4 miles via low clouds/precip/mist is definitely possible.**
- **The best risk for any fog that does develop sits Morgan’s Point to 11/12. Boarding Station still has a fog risk, but is lower than area just mentioned as there’s a better threat for locally heavier precip and for winds to be a bit more elevated.**

Houston Pilots Extended Range Visibility Report



Sunday 1/1/23

Fog risk will be possible into Sunday, as winds will be from the S in a favorable 10 – 15-kt range.



Tuesday 1/3/23

Stronger winds through the evening hours on Monday and winds shifting out of the N by early AM hours on Tuesday will reduce fog chances.



Monday 1/2/23

Monday's winds will need to be watched carefully as there are very near being too strong for fog. Otherwise, this would be a good fog setup.



Chance for Reduced Visibility

Sunday AM	Possible
Sunday PM	Possible
Monday AM	Possible
Monday PM	Possible
Tuesday AM	Unlikely
Tuesday PM	Unlikely

Houston Pilots Visibility Report



Confidence

Above Normal

Below Normal

Time	Thu 3am	Thu 4am	Thu 5am	Thu 6am	Thu 7am	Thu 8am	Thu 9am	Thu 10am	Thu 11am	Thu 12pm	Thu 1pm	Thu 2pm	Thu 3pm	Thu 4pm	Thu 5pm	Thu 6pm	Thu 7pm	Thu 8pm	Thu 9pm	Thu 10pm	Thu 11pm	Fri 12am	Fri 1am	Fri 2am	Fri 3am	Fri 4am	Fri 5am	Fri 6am	Fri 7am	Fri 8am	Fri 9am	Fri 10am	Fri 11am	Fri 12pm	Fri 1pm	Fri 2pm
610 Bridge	10	10	7	6	6	5	10	10	10	10	10	10	10	10	10	9	8	6	6	5	4	4	3	3	3	2	0.48	0.48	0.24	0.24	1	4	6	10	10	10
Kinder 1	10	10	7	6	6	5	10	10	10	10	10	10	10	10	10	9	8	6	6	5	5	4	4	3	3	2	1	2	2	2	2	5	7	10	10	10
Greens Bayou	10	10	7	6	6	5	10	10	10	10	10	10	10	10	10	9	7	6	6	5	5	4	4	3	4	3	3	3	4	4	5	6	8	10	10	10
Shell Crude	10	10	7	6	6	5	10	10	10	10	10	10	10	10	10	9	8	6	6	5	5	4	4	3	4	3	3	4	6	6	6	6	8	10	10	10
Lynchburg Ferries	10	10	7	6	6	5	10	10	10	10	10	10	10	10	10	9	7	6	5	4	5	4	4	3	4	3	3	4	6	6	6	6	8	10	10	10
Exxon 3	10	10	7	6	6	5	10	10	10	10	10	10	10	10	10	8	7	6	5	4	5	4	4	3	4	3	3	4	6	6	6	6	8	10	10	10
Morgans Point	10	10	7	7	6	5	10	10	10	10	10	10	10	10	9	8	7	6	5	4	5	4	4	3	4	4	3	4	6	6	6	6	8	10	10	10
75/76	10	10	10	9	9	6	10	10	10	10	10	10	10	10	9	7	7	6	5	4	5	4	4	3	4	4	3	4	6	6	6	6	8	10	10	10
63/64	10	10	10	10	10	6	10	10	10	10	10	10	10	10	8	7	6	6	5	5	4	5	4	4	4	4	3	4	6	6	6	6	7	10	10	10
51/52	10	10	10	10	10	6	9	10	10	10	10	10	10	10	8	6	6	6	5	5	4	5	4	4	4	4	3	4	4	5	5	6	7	8	9	10
37/38	10	10	10	10	10	6	9	10	10	10	10	10	10	10	7	6	6	6	5	5	4	5	4	4	5	4	3	3	2	4	4	5	6	7	8	9
25/26	10	10	10	10	10	7	9	10	10	10	10	10	10	10	9	6	6	6	6	5	5	4	5	5	5	5	4	3	3	2	2	5	6	7	7	7
11/12	10	10	10	10	10	7	9	10	10	10	10	10	9	9	6	6	6	6	5	5	4	5	4	4	5	4	4	4	2	1	3	5	5	6	6	6
1 & 2 Bravo	10	10	10	10	10	7	9	10	10	9	9	9	6	9	6	6	3	3	2	2	3	3	3	3	3	3	3	3	3	2	0.22	1	3	4	4	4

Please check visibility slides above for official thinking on fog as this chart may not be 100% perfect.

Houston Pilots Wind Report



Example

Sustained wind 13 Knots
Gusts 18 Knots
Wind from the N

WS: 13
G:18
N

Time Knots	Thu 3am	Thu 4am	Thu 5am	Thu 6am	Thu 7am	Thu 8am	Thu 9am	Thu 10am	Thu 11am	Thu 12pm	Thu 1pm	Thu 2pm	Thu 3pm	Thu 4pm	Thu 5pm	Thu 6pm	Thu 7pm	Thu 8pm	Thu 9pm	Thu 10pm	Thu 11pm	Fri 12am	Fri 1am	Fri 2am	Fri 3am	Fri 4am	Fri 5am	Fri 6am	Fri 7am	Fri 8am	Fri 9am	Fri 10am	Fri 11am	Fri 12pm	Fri 1pm	Fri 2pm				
610 Bridge	7	6	8	7	8	6	8	10	11	13	12	13	12	11	10	9	8	9	8	9	8	7	7	6	6	5	5	4	4	4	5	6	6	5	5	6				
	15	15	15	16	18	13	22	23	22	21	19	20	20	19	19	15	16	16	16	16	16	14	14	15	11	10	8	4	4	7	7	7	7	7	8					
Kinder 1	S	S	S	S	SSW	SSW	SSW	SSW	S	S	S	S	S	S	S	SSE	SSE	SSE	SSE	SSE	S	S	S	SSW	SW	WNW	NNW	N	N	N	N	N	N	N	N					
	6	6	8	7	8	6	8	10	11	13	12	13	12	11	10	9	8	8	8	8	8	8	7	6	5	4	5	3	3	3	5	5	5	5	5	6				
Greens Bayou	15	15	15	16	18	12	22	24	23	21	20	20	20	19	19	15	16	16	16	16	16	14	14	15	11	10	8	7	7	7	7	7	7	7	8					
	S	S	S	S	SSW	SSW	SSW	SSW	S	S	S	S	S	S	S	SSE	SE	SSE	SSE	SSE	S	S	S	S	SSW	WSW	NW	N	N	N	WSW	N	N	N	N					
Shell Crude	6	5	8	7	7	6	8	11	11	12	13	13	13	11	9	9	8	9	8	8	8	8	7	6	5	5	5	4	3	4	5	5	5	5	5	6				
	14	15	16	16	16	13	22	24	24	21	21	20	21	19	18	15	16	16	15	16	15	15	14	13	14	11	10	8	7	7	7	8	7	8	7	6	7			
Lynchburg Ferries	S	S	SSW	SSW	SSW	SSW	SSW	SSW	SSW	S	S	S	S	S	S	SSE	SE	SSE	SSE	SSE	S	S	S	S	S	S	S	S	S	S	S	S	S	S	S	S				
	6	6	8	7	7	6	8	11	11	12	13	13	13	12	9	9	10	9	9	9	8	8	8	7	6	5	5	5	4	5	6	5	5	6	5	6	5	6		
Exxon 3	15	15	16	17	16	12	19	24	24	21	21	20	21	19	17	14	16	17	15	16	16	16	15	14	14	11	12	9	9	8	8	8	8	8	7	7	7			
	S	S	SSW	S	SSW	S	SSW	S	SSW	S	S	S	S	S	SSE	SSE	SSE	SSE	SSE	SSE	S	S	S	S	S	S	S	S	S	S	S	S	S	S	S	S	S			
Morgans Point	7	9	10	10	9	12	10	10	9	11	12	12	12	12	12	10	11	12	11	11	11	10	10	9	7	7	6	6	6	6	6	6	5	6	6	6	6			
	17	16	16	17	15	18	18	23	23	21	21	21	20	19	17	15	18	19	18	19	20	19	18	17	17	15	13	10	10	9	8	8	8	8	8	7	7			
75/76	S	S	SSW	S	SSW	S	SSW	S	SSW	S	S	SSE	SSE	SE	SSE	SSE	SSE	SSE	SSE	SSE	S	S	S	S	S	S	S	S	S	S	S	S	S	S	S	S	S			
	8	9	11	10	9	12	10	9	9	11	11	12	13	14	13	10	11	12	12	12	12	12	12	11	10	10	9	8	7	7	6	6	6	5	6	6	6			
63/64	17	16	16	17	18	18	18	21	22	21	21	21	20	18	16	15	18	19	20	20	20	19	18	18	17	15	14	11	10	9	8	8	8	8	7	7	7			
	S	S	S	SSW	SSW	S	SSW	S	S	SSW	S	S	SSE	SSE	SE	SSE	SSE	SSE	SSE	SSE	S	S	S	S	S	S	S	S	S	S	S	S	S	S	S	S	S			
51/52	9	9	11	9	9	12	10	10	11	11	11	12	13	14	13	11	12	13	13	13	13	13	13	12	11	10	9	8	7	7	6	6	6	6	6	5	5			
	17	16	17	17	18	18	18	21	21	20	20	20	18	15	15	18	19	20	19	19	19	19	19	18	18	16	14	12	10	9	8	8	8	8	8	7	7			
37/38	SSW	S	S	SSW	SSW	SSW	S	S	S	S	S	SSE	SSE	SE	SSE	SSE	SSE	SSE	SSE	SSE	S	S	S	S	S	S	S	S	S	S	S	S	S	S	S	S	S			
	10	9	10	9	11	10	10	10	11	11	12	12	12	10	13	12	12	13	14	14	14	14	13	12	11	10	9	8	7	7	6	6	6	6	6	6	5			
25/26	16	15	17	16	17	14	17	22	21	20	20	19	14	14	17	18	18	19	21	21	19	19	19	19	18	16	15	13	10	9	8	8	8	8	8	7	7			
	SSW	S	SSW	S	SSW	SSW	S	S	S	S	S	SSE	SSE	N	SSE	SSE	SSE	SSE	SSE	SSE	SSE	SSE	S	S	S	S	S	S	S	S	S	S	S	S	S	S	S			
11/12	9	9	10	9	10	9	11	11	11	9	10	9	12	13	14	14	15	14	14	14	14	14	14	14	12	10	9	8	7	7	6	6	6	7	7	6	6			
	16	16	19	17	21	16	14	18	20	19	16	14	13	17	15	18	20	21	21	22	21	22	21	19	18	16	16	14	12	11	10	9	9	9	9	9	7			
1 & 2 Bravo	S	SSW	SSW	SSW	SSW	SSW	SSW	S	S	S	SSE	SSE	SE	SE	S	SSE	SSE	SE	SE	SSE	SE	S	S	S	S	S	S	S	S	S	S	S	S	S	S	S	S			
	11	11	10	10	9	10	10	8	9	8	8	9	9	9	10	14	14	15	15	16	14	15	15	13	12	10	9	9	9	7	7	7	7	7	7	6	6			
	19	21	17	17	19	16	17	16	15	15	15	12	16	17	15	18	20	21	22	23	21	20	21	21	19	17	16	14	14	12	10	9	9	9	9	9	7			
	S	S	S	S	SSW	S	S	SSE	SSE	SSE	SSE	SE	SE	S	NW	SE	SE	SSE	SSE	SSE	SSE	S	SSE	S	S	S	S	S	S	S	S	S	SSE	SSE	S	SSE	WSW	NNW	N	N

Forecast Discussion

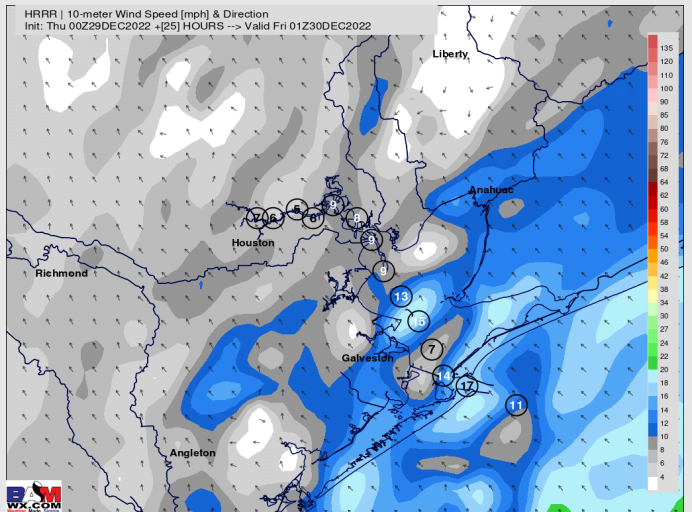
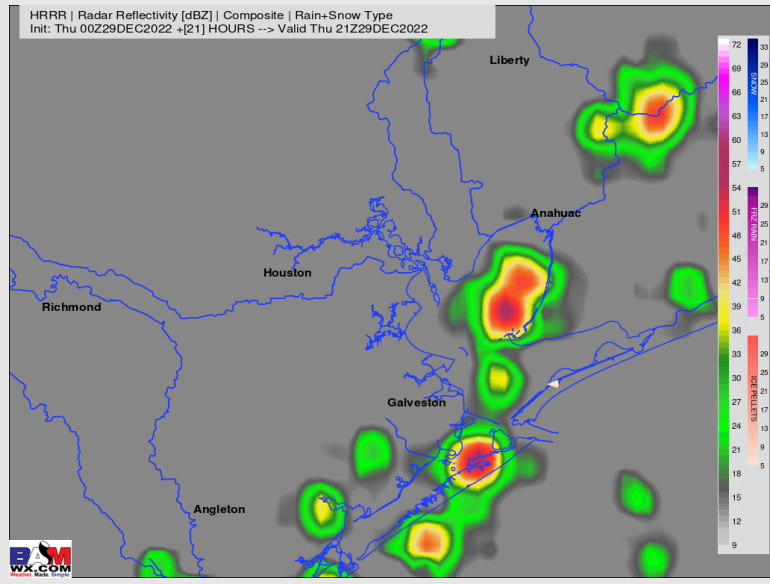
Precip: Anticipating pockets of light to moderate rain showers around the area through 3 PM (there will be breaks in the rain over the day). After ~mid afternoon and through the rest of the evening, coverage looks to increase some and chances pick up closer to 70%. The evening hours will also be when the threat of a few locally stronger thunderstorms are possible (better risk sits North of the stations).

Wind: Sustained winds from the S/SSE for the entire day. Winds will be around 8-13 kts across all station with a couple of gusts to 15 knots. The highest winds likely occur at the boarding station.

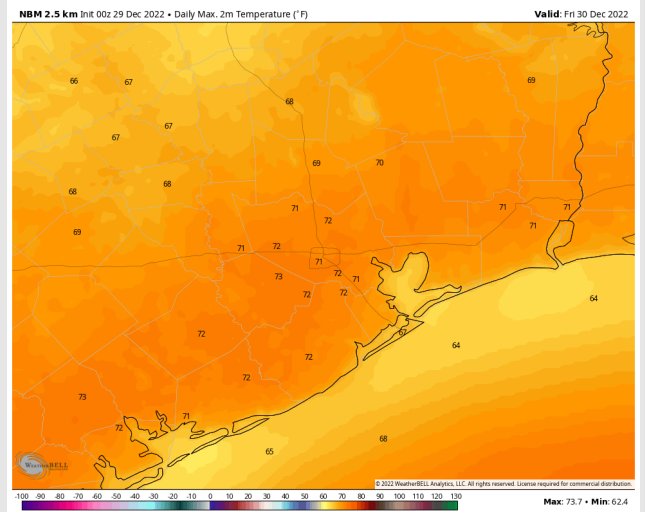
Temps: High temps will be in the low 70s F north of Morgan's Point and in the mid 60s to near 70 F south of Morgan's Point.

Visibility: Check the slides above for more on reduced visibility potential today.

Precip Forecast: 3 PM CT



Wind Speed
7 PM CT



High Temps
Today

Houston Pilots: Fri. 12/30/2022



Forecast Discussion

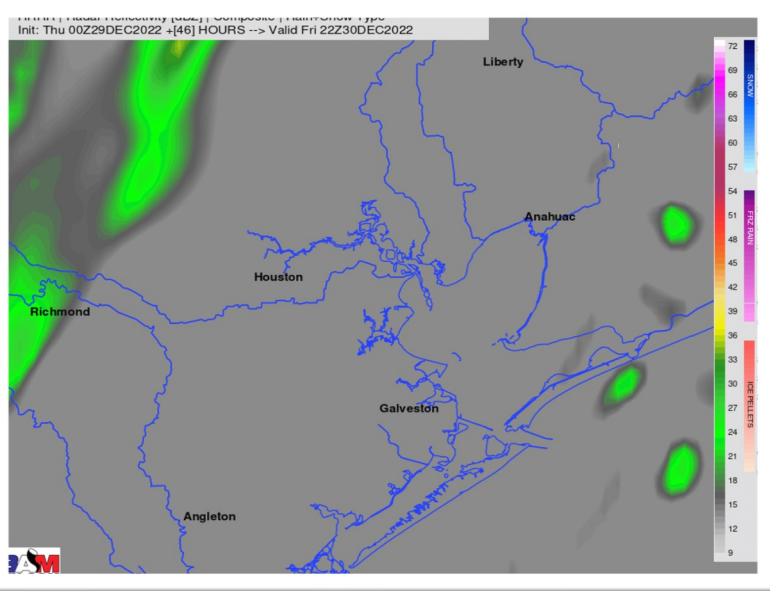
Precip: Exiting rain showers in the morning will look to clear out by 7 AM, but pockets of drizzle will be possible (10% chance) for the remainder of the day in an isolated fashion.

Wind: Southerly winds in the AM will shift variable by 9 AM and for the remainder of the day (low confidence on wind direction). Winds will generally be in the 4 – 9-kt range for the majority of the day, with pockets of elevated winds at 10 – 15 kts from 12 – 6 AM. Wind gusts can be up to 20 kts for the same timeframe at the boarding station.

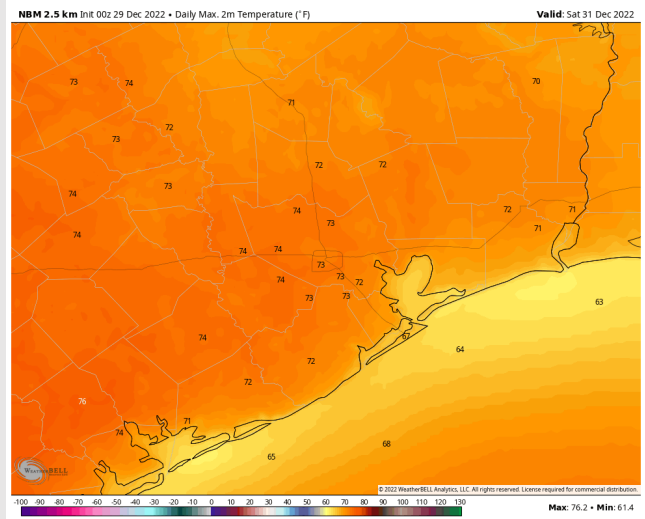
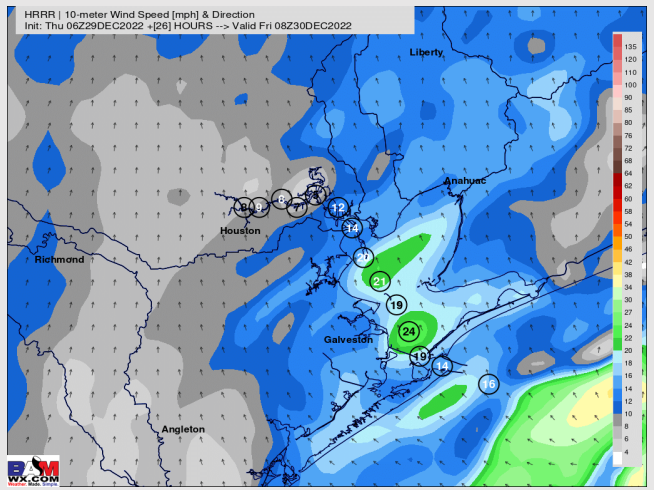
Temps: High temps Friday will be in the lower 70s F north of Morgan’s Point and in the mid to upper 60s F south of Morgan’s Point.

Visibility: Details on reduced visibility on the AM in slides above. By the afternoon, the winds shifting from the north **should** limit fog concerns.

Precip Forecast: 4 PM CT



Wind Speed
3 AM CT



High Temps
Friday

Houston Pilots: sat. 12/31/2022



Forecast Discussion

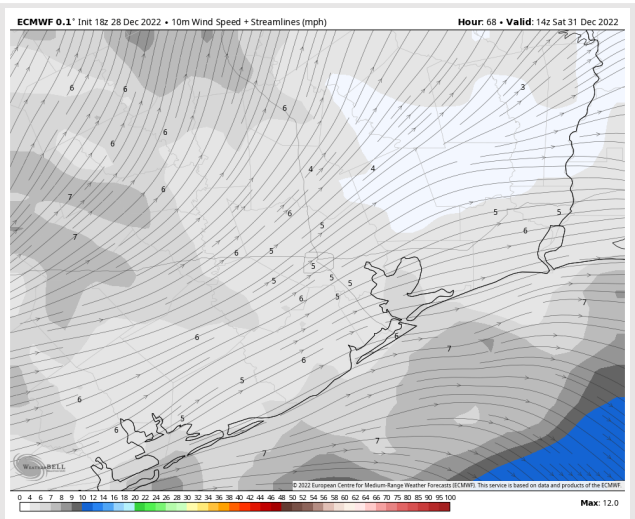
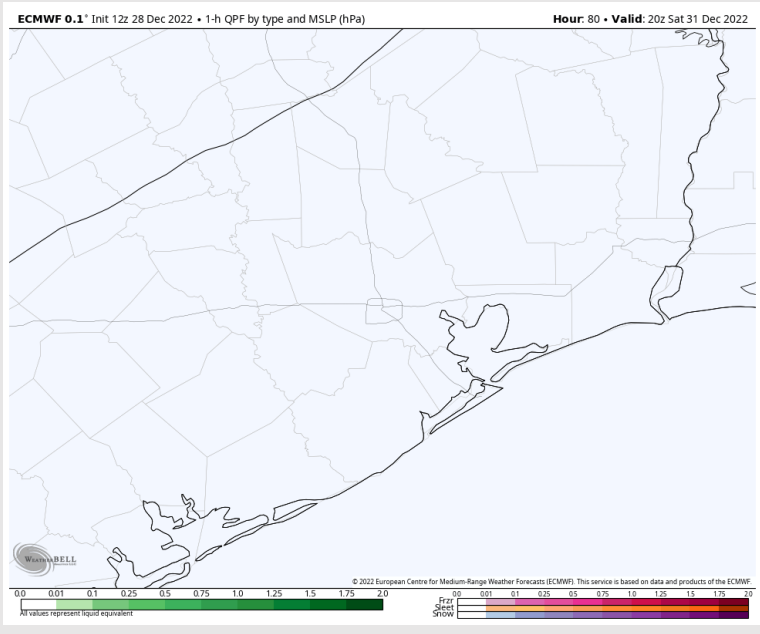
Precip: Anticipating dry conditions throughout the day on Saturday.

Wind: Winds will start out of the north and shift to coming from the west by 4 AM. Winds will then shift to from the SW by 11 AM and stay there the rest of the day. Winds in the m hours will be relatively calm at 2-7 kts. Winds in the afternoon will then increase to 7-12 kts, with pockets of 15 kts possible after 7 PM.

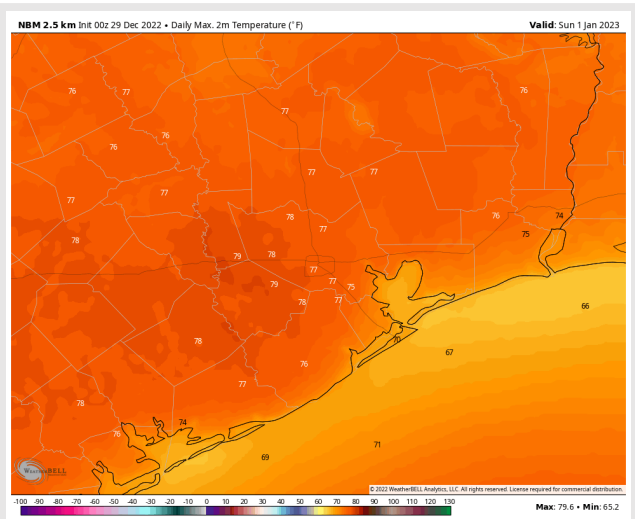
Temps: High temperatures on Saturday will be in the mid to upper 70s F north of Morgan's Point and near 70 F to upper 60s F south of Morgan's Point.

Visibility: With winds continuing out of the North and West for the majority of the AM hours, fog is unlikely.

Precip Forecast: 2 PM CT

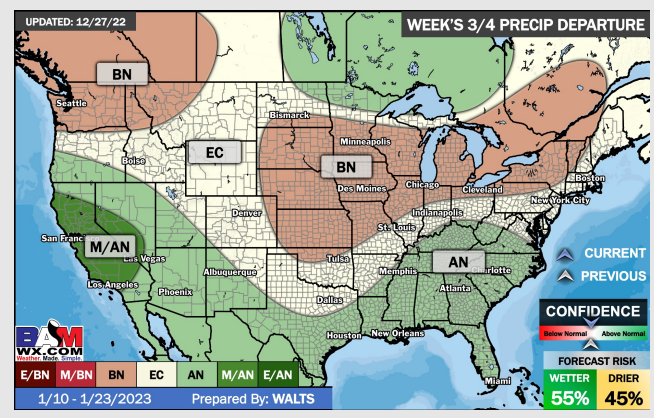
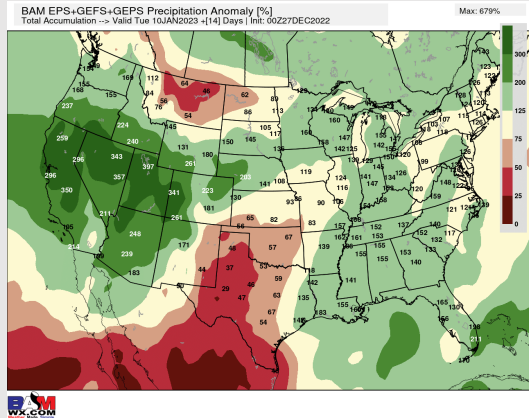
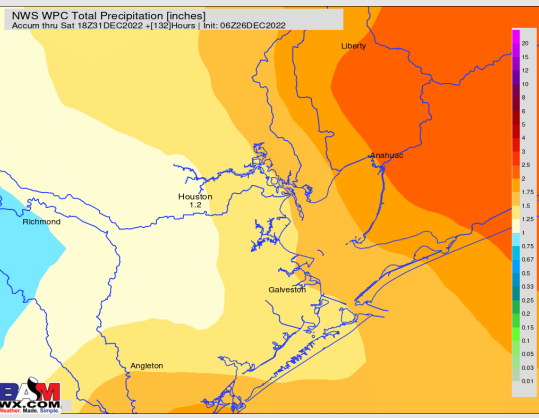
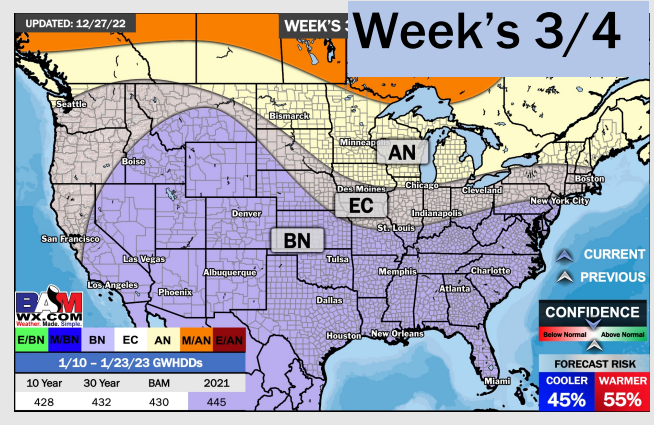
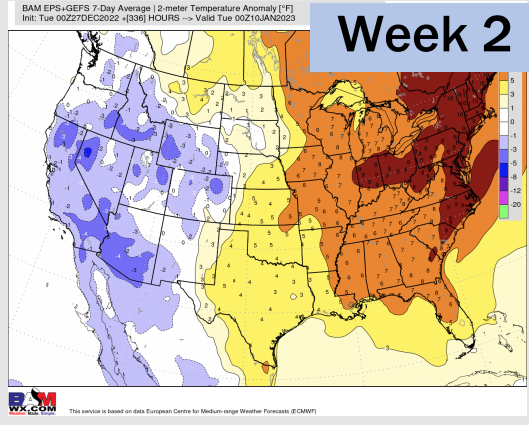
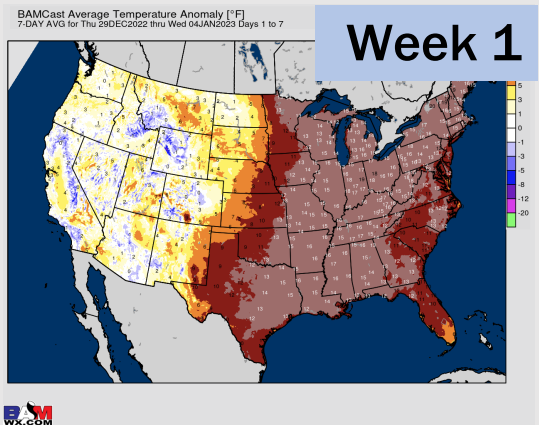


Wind Speed
8 AM CT



High Temps
Saturday

Houston Pilots: 12/29/22



- After chances rain are in the forecast Thursday/ Friday, an overall quieter weekend is expected before rainfall picks back up early next week. Above average temps are favored moving forward.
- Week 2 precipitation is expected to be above normal for the week 2 timeframe. Temperatures are to be much above normal.
- Above normal moisture and cooler weather is expected in the weeks 3/4 timeframe.