

Houston Pilots Forecast Package



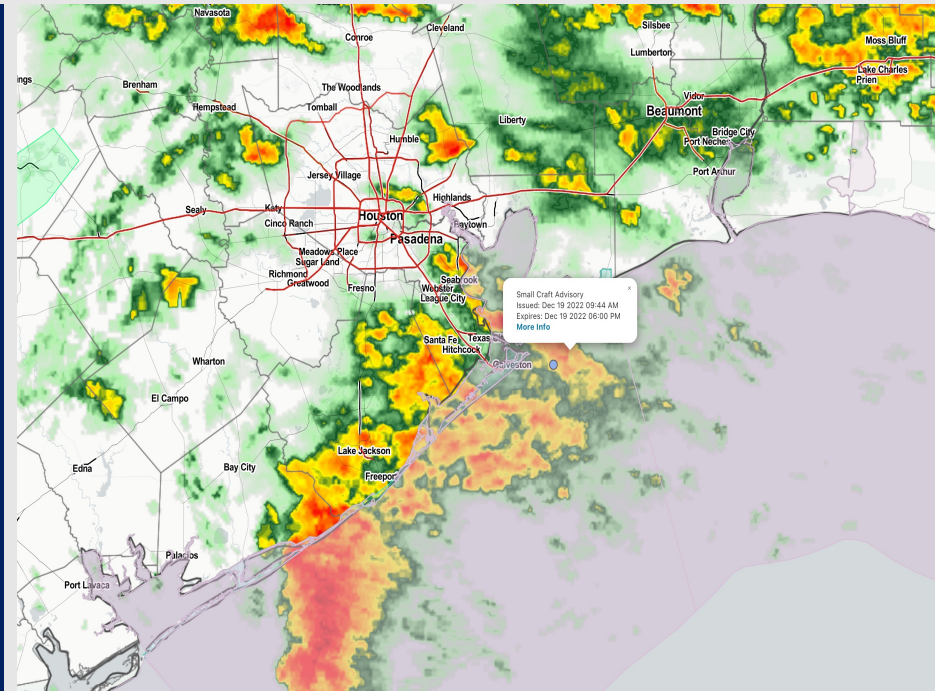
Updated: 1:35 PM CT

Monday, December 19, 2022

Forecaster: Matt Griffin

Weather Headlines

- Storms this afternoon with light moisture lingering through the overnight.
- Today will hold elevated winds with some gusts of 25-30+ knots being possible (isolated higher in any thunderstorms cannot be ruled out).
- The pattern ahead looks rather unfavorable for fog. We will watch trends closely, but a primarily Northerly wind with drier air should really limit fog chances over the next 7-10 days.
- Towards the end of the week temperatures are expected to be well below average.
- Eyeing 40-50 MPH potential gusts late Thursday night into early Friday morning, more details to come.



Radar/NWS Alerts: 1:35 AM CT



As always, please do not hesitate to reach out to us with any forecast questions via the chat option on the Weather Porthole or our on-call number, **(317)-560-8122** press 1 for forecast questions.

Houston Pilots Extended Range Visibility Report



Thursday 12/22/22

Winds shift back out of the south into THU AM. Fog cannot be ruled out, although the threat at this distance looks low.



Friday 12/23/22

No Fog expected for Friday as another cold front sweeps through the area.



Saturday 12/24/22

No Fog expected for Saturday as northerly winds continue.



Chance for Reduced Visibility

Thursday AM	Possible
Thursday PM	Unlikely
Friday AM	Unlikely
Friday PM	Unlikely
Saturday AM	Unlikely
Saturday PM	Unlikely

Houston Pilots Visibility Report

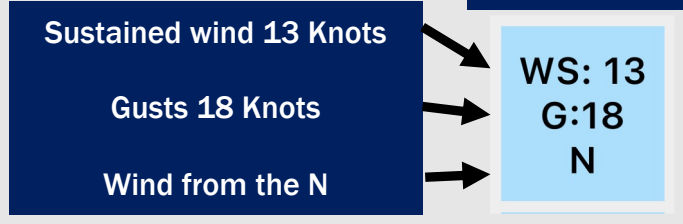


Time	Mon 12pm	Mon 1pm	Mon 2pm	Mon 3pm	Mon 4pm	Mon 5pm	Mon 6pm	Mon 7pm	Mon 8pm	Mon 9pm	Mon 10pm	Mon 11pm	Tue 12am	Tue 1am	Tue 2am	Tue 3am	Tue 4am	Tue 5am	Tue 6am	Tue 7am	Tue 8am	Tue 9am	Tue 10am	Tue 11am	Tue 12pm	Tue 1pm	Tue 2pm	Tue 3pm	Tue 4pm	Tue 5pm	Tue 6pm	Tue 7pm	Tue 8pm	Tue 9pm	Tue 10pm	Tue 11pm			
610 Bridge	6	4	3	3	2	4	5	6	5	5	5	4	4	4	4	5	5	6	6	4	2	3	5	8	10	10	10	10	10	10	10	8	9	10	10	10	10		
Kinder 1	7	5	3	3	2	4	5	5	5	5	5	4	4	4	4	5	5	6	6	4	2	3	5	8	10	10	10	10	10	10	10	7	8	9	10	10	10		
Greens Bayou	7	5	3	3	1	4	4	5	5	5	5	4	4	4	4	5	5	6	6	5	3	3	5	8	10	10	10	10	10	10	9	7	8	9	10	10	10		
Shell Crude	7	5	3	2	1	4	4	5	5	5	5	4	4	4	4	5	6	6	6	5	3	4	5	8	10	10	10	10	10	10	9	7	8	9	10	9	9		
Lynchburg Ferries	8	5	2	3	1	4	4	5	5	5	5	4	4	4	4	5	6	6	6	5	3	4	5	8	10	10	10	10	10	10	9	7	8	9	10	9	9		
Exxon 3	8	5	2	3	1	4	4	5	5	5	5	4	4	4	4	5	6	6	7	5	3	4	5	8	9	9	9	10	9	9	7	8	9	9	9	9	9		
Morgans Point	8	5	3	2	1	4	4	5	5	5	5	4	4	4	4	5	6	7	7	6	4	5	6	8	9	9	9	10	9	9	8	8	9	9	9	9	9		
75/76	8	5	3	2	2	4	4	5	5	5	5	4	4	4	4	5	7	7	7	7	6	6	7	8	9	9	9	10	9	9	8	8	8	8	9	9	9		
63/64	9	5	3	1	2	4	4	5	5	5	4	4	4	4	4	5	7	8	8	7	7	7	7	8	9	9	9	10	9	9	8	8	8	8	9	9	9		
51/52	8	5	3	1	2	3	4	5	5	5	4	4	4	4	5	5	7	8	8	7	7	7	7	8	9	9	9	10	10	8	8	8	8	8	8	8	8		
37/38	8	4	3	1	1	3	4	5	5	5	4	4	4	4	5	5	7	7	8	7	6	7	7	8	8	9	9	10	10	8	8	8	8	8	8	8	8		
25/26	8	3	3	1	1	3	4	5	5	5	4	4	4	4	5	5	7	7	8	7	7	7	7	8	8	8	9	10	10	9	8	8	8	8	8	8	8		
11/12	8	3	3	1	1	3	4	4	4	5	4	4	4	4	4	4	7	7	8	8	7	8	8	8	8	8	8	8	10	10	10	9	8	8	8	8	8	8	
1 & 2 Bravo	8	4	3	1	1	3	4	4	4	4	4	4	4	4	4	7	7	8	8	8	8	8	8	8	8	8	8	8	8	10	10	10	10	10	8	8	8	8	8

Houston Pilots Wind Report



Example



Time Knots	Mon 12pm	Mon 1pm	Mon 2pm	Mon 3pm	Mon 4pm	Mon 5pm	Mon 6pm	Mon 7pm	Mon 8pm	Mon 9pm	Mon 10pm	Mon 11pm	Tue 12am	Tue 1am	Tue 2am	Tue 3am	Tue 4am	Tue 5am	Tue 6am	Tue 7am	Tue 8am	Tue 9am	Tue 10am	Tue 11am	Tue 12pm	Tue 1pm	Tue 2pm	Tue 3pm	Tue 4pm	Tue 5pm	Tue 6pm	Tue 7pm	Tue 8pm	Tue 9pm	Tue 10pm	Tue 11pm		
610 Bridge	11	9	11	11	11	9	10	10	10	9	9	6	5	5	6	8	8	8	8	9	9	11	11	11	10	10	11	11	11	11	10	9	9	8	7	7		
	23	21	23	23	22	24	24	23	26	24	23	18	15	13	14	13	13	14	14	14	15	16	16	17	17	17	17	17	17	16	16	14	13	13	12			
	ENE	ENE	NE	NE	ENE	NE	ENE	ENE	ENE	ENE	ENE	ENE	NE	NE	NNE	NNE	NNE	N	N	N	N	N	N	N	N	N	N	N	N	NNE	NNE	NNE	NNE	NNE				
Kinder 1	11	9	11	12	12	9	10	10	10	10	9	6	4	5	6	7	7	8	8	8	9	10	10	10	10	11	10	11	11	10	9	8	7	7	7			
	22	21	24	24	24	21	24	23	26	24	23	19	16	13	14	13	13	14	14	14	15	16	16	17	17	17	17	17	16	16	14	13	12	12				
	ENE	ENE	NE	NE	ENE	NE	ENE	ENE	ENE	ENE	ENE	ENE	NE	NE	NNE	NNE	NNE	N	N	N	N	N	N	N	N	N	N	N	N	NNE	NNE	NNE	NNE	NNE				
Greens Bayou	11	10	12	13	13	11	10	10	11	10	9	7	5	5	6	7	8	8	9	9	9	10	10	11	11	11	11	11	11	10	9	8	7	7	7			
	23	22	24	26	24	23	24	26	26	25	23	20	17	13	15	13	13	14	14	14	15	16	16	17	17	17	17	16	16	15	14	12	11	11	11			
	ENE	ENE	NE	NE	ENE	NE	ENE	ENE	ENE	ENE	ENE	ENE	NE	NE	NNE	NNE	NNE	N	N	N	N	N	N	N	N	N	N	N	N	NNE	NNE	NNE	NNE	NNE				
Shell Crude	11	10	13	14	12	11	10	11	10	10	9	7	5	6	7	8	9	9	9	9	10	11	11	11	11	12	12	12	12	11	10	9	8	8	7			
	23	23	25	26	24	24	23	25	26	25	23	20	17	13	14	13	13	14	15	15	15	16	16	16	17	17	17	16	16	16	14	13	12	12				
	ENE	ENE	NE	ENE	ENE	NE	ENE	ENE	ENE	ENE	ENE	ENE	NE	NE	NNE	NNE	NNE	N	N	N	N	N	N	N	N	N	N	N	N	NNE	NNE	NNE	NNE	NNE				
Lynchburg Ferries	13	10	13	14	13	12	11	12	11	11	9	7	5	5	7	10	10	11	11	11	11	12	12	11	11	12	12	12	12	11	10	9	9	9	9			
	23	23	27	26	26	24	23	25	26	27	24	22	18	13	14	13	14	15	15	15	16	16	16	17	17	17	16	16	16	15	14	13	13	13				
	ENE	ENE	ENE	ENE	NE	NE	ENE	ENE	ENE	ENE	ENE	ENE	ENE	NNE	NNE	NNE	NNE	N	N	N	N	N	N	N	N	N	N	N	N	N	NNE	NNE	NNE	NNE				
Exxon 3	14	12	15	14	14	12	13	14	13	14	12	11	8	6	8	10	10	11	11	12	12	12	12	12	12	12	12	12	11	10	9	9	9	9				
	23	24	27	26	27	25	23	25	26	27	24	22	18	13	14	14	14	15	16	16	16	17	17	17	17	17	16	16	16	14	14	14	14	14				
	ENE	ENE	ENE	ENE	NE	NE	ENE	ENE	ENE	ENE	ENE	ENE	ENE	NNE	NNE	NNE	NNE	N	N	N	N	N	N	N	N	N	N	N	N	NNE	NNE	NNE	NNE	NNE				
Morgans Point	21	20	23	21	20	23	20	23	22	23	20	18	15	12	11	12	12	12	12	12	12	13	13	13	13	13	13	12	12	12	12	12	12	12	11	10	10	
	24	24	28	26	26	27	25	26	26	26	24	22	19	14	14	15	16	16	17	17	18	18	18	18	18	18	18	17	17	16	16	16	16	15	15	15		
	ENE	ENE	ENE	ENE	ENE	ENE	ENE	ENE	ENE	ENE	ENE	ENE	ENE	NE	NE	NNE	NNE	NNE	N	N	N	N	N	N	N	N	N	N	N	N	NNE	NNE	NNE	NNE	NNE			
75/76	21	20	23	24	22	24	21	24	23	23	21	18	16	14	13	13	13	14	14	14	14	14	14	14	14	14	14	14	13	13	13	13	13	13	12	12	12	
	27	27	28	26	24	28	26	26	27	26	25	23	20	16	14	16	16	17	17	18	18	18	18	18	18	18	18	18	17	17	17	17	17	17	17	16	15	15
	E	E	ENE	ENE	ENE	ENE	ENE	ENE	ENE	ENE	ENE	ENE	ENE	NE	NE	NNE	NNE	NNE	NNE	N	N	N	N	N	N	N	N	N	N	N	N	N	N	N	NNE	NNE	NNE	
63/64	23	24	23	24	22	24	21	24	23	23	21	19	16	14	15	14	14	14	15	15	15	15	15	15	15	15	15	15	14	14	14	14	14	14	13	13	13	
	29	31	31	26	24	28	26	26	27	27	26	24	20	16	16	16	17	17	18	19	19	19	19	19	19	19	19	18	18	18	18	17	17	17	16	16	16	
	E	E	ENE	NE	ENE	ENE	ENE	ENE	ENE	ENE	ENE	ENE	ENE	NE	NE	NNE	NNE	NNE	NNE	NNE	N	N	N	N	N	N	N	N	N	N	N	N	N	N	NNE	NNE	NNE	
51/52	23	26	28	22	20	23	21	23	23	24	23	19	16	15	16	14	15	15	15	16	16	16	16	16	16	16	16	15	15	15	15	15	15	15	14	14	14	
	30	32	34	27	23	27	24	26	27	27	26	24	20	16	17	16	17	18	18	19	19	20	19	19	19	19	19	19	18	18	18	18	17	17	17	16	16	
	E	E	E	NE	NE	ENE	ENE	ENE	ENE	ENE	ENE	ENE	ENE	NE	NE	NNE	NNE	NNE	NNE	NNE	N	N	N	N	N	N	N	N	N	N	N	N	N	N	NNE	NNE	NNE	
37/38	25	26	28	23	18	23	21	23	24	24	23	19	16	15	16	15	16	16	16	16	17	17	17	16	16	16	16	16	16	16	16	16	16	15	15	14	14	
	31	33	34	28	22	27	24	27	27	25	24	21	18	17	17	17	18	18	19	20	20	20	20	20	20	20	20	19	19	19	18	18	18	17	17	17		
	E	E	E	NE	NE	ENE	ENE	ENE	ENE	ENE	ENE	ENE	ENE	NE	NE	NNE	NNE	NNE	NNE	NNE	NNE	N	N	N	N	N	N	N	N	N	N	N	N	N	NNE	NNE	NNE	
25/26	26	26	28	26	19	23	22	23	23	24	22	23	19	16	17	15	16	16	16	16	16	17	17	17	17	17	17	16	16	16	16	16	16	15	15	15	15	
	31	33	34	33	21	26	26	27	28	28	26	26	22	18	17	17	18	18	18	19	20	20	21	21	21	21	21	20	20	19	19	19	19	18	18	17	17	
	E	E	E	ENE	NE	NE	ENE	ENE	ENE	ENE	ENE	ENE	ENE	ENE	NE	NE	NNE	NNE	NNE	NNE	NNE	N	N	N	N	N	N	N	N	N	N	N	N	N	N	NNE	NNE	NNE
11/12	27	27	28	31	28	24	25	25	26	26	24	24	21	18	16	16	16	16	17	17	17	17	17	17	17	17	17	16	16	16	16	16	16	16	16	16	15	
	31	32	33	38	33	28	28	28	29	30	27	27	23	19	17	17	18	19	19	20	20	21	21	21	21	21	21	20	20	20	19	19	19	19	19	19	17	
	E	E	E	ENE	NE	NE	ENE	ENE	ENE	ENE	ENE	ENE	ENE	ENE	NE	NE	NNE	NNE	NNE	NNE	NNE	N	N	N	N	N	N	N	N	N	N	N	N	N	N	NNE	NNE	NNE
1 & 2 Bravo	27	28	28	35	32	27	28	26	26	28	25	24	23	19	16	17	17	17	17	18	18	18	18	18	18	18	17	17	17	17	17	17	17	17	17	17	16	
	31	32	32	40	38	30	31	29	29	31	28	27	25	20	17	18	19	19	20	20	21	21	21	21	21	21	21	20	20	20	20	20	20	19	19	19	18	
	E	E	ENE	E	ENE	NE	NE	ENE	ENE	ENE	ENE	ENE	ENE	ENE	NE	NE	NNE	NNE	NNE	NNE	NNE	N	N	N	N	N	N	N	N	N	N	N	N	N	N	NNE	NNE	NNE

Houston Pilots: Mon. 12/19/2022



Forecast Discussion

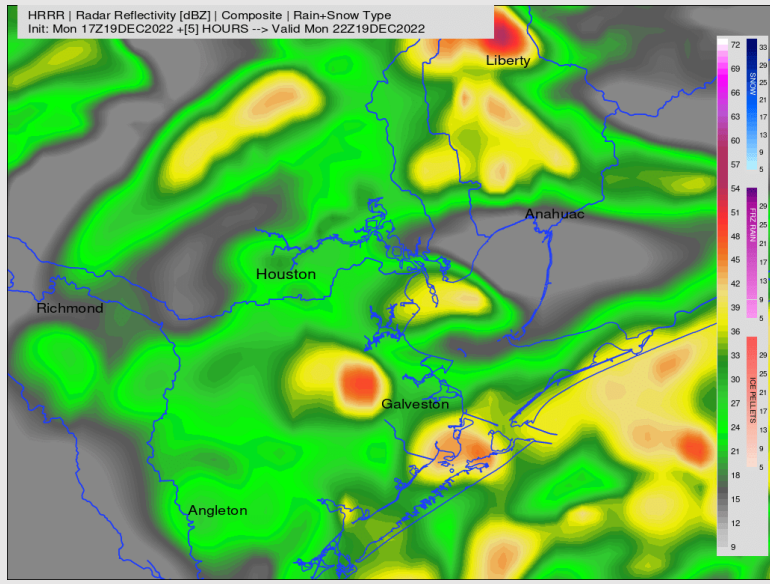
Precip: Rain/ storms will continue to move in from the west this afternoon. Storms will be possible through about 5 – 6 PM with lingering rain showers through the remainder of the day. Activity should become more hit and miss beyond 5 PM in addition to becoming lighter in nature.

Wind: Easterly winds will start to shift more out of the NE around 4 – 5 PM this afternoon. Winds will continue to remain elevated during this timeframe, remaining sustained around 21 – 26 knots towards the boarding station (Gust up to 30 – 35 knots). Further north towards Morgan’s Point, sustained winds around 18-23 knots will be possible with gusts near 25 – 30 knots. A general NE wind continues the rest of the evening sustained around 17 – 21 knots with gusts around 26 knots for all stations Morgan’s Point and south.

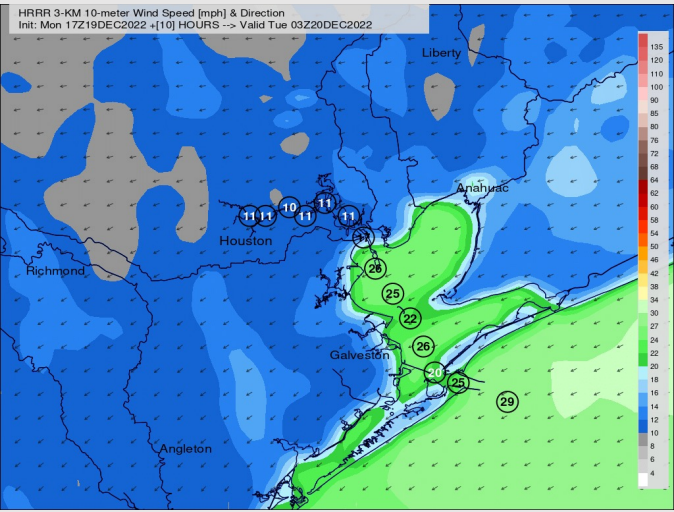
Temps: Low temps into the lower 50’s expected into tomorrow morning. Cooler for stations towards the HOU metro.

Visibility: Not anticipating any visibility concerns at this time.

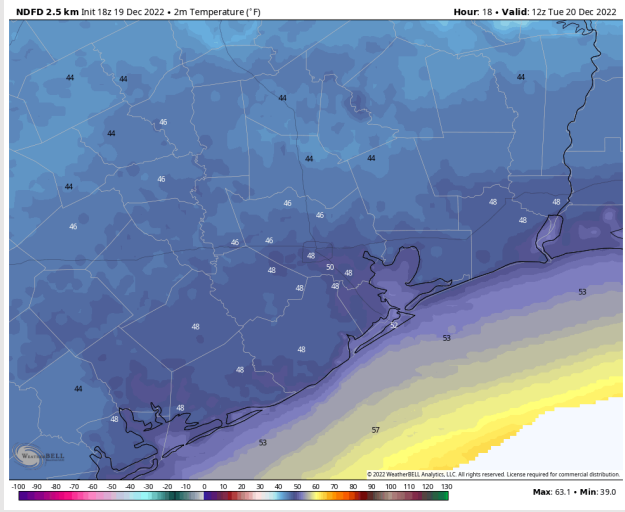
Precip Forecast: 4 PM CT



Wind Speed
9 PM CT



Low Temps
TUE AM



Forecast Discussion

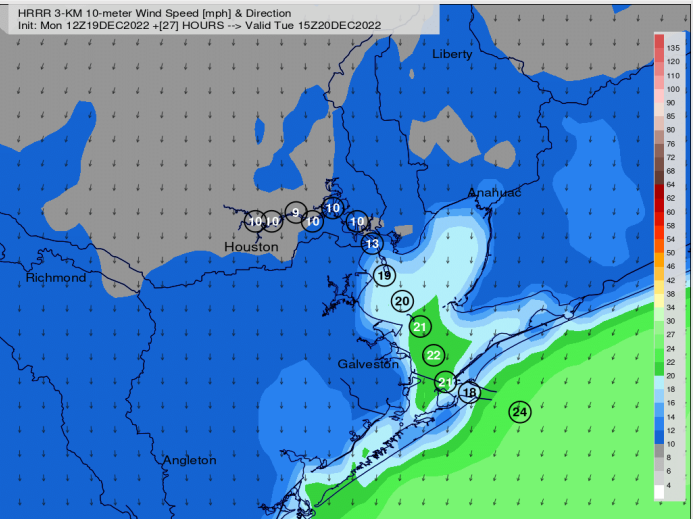
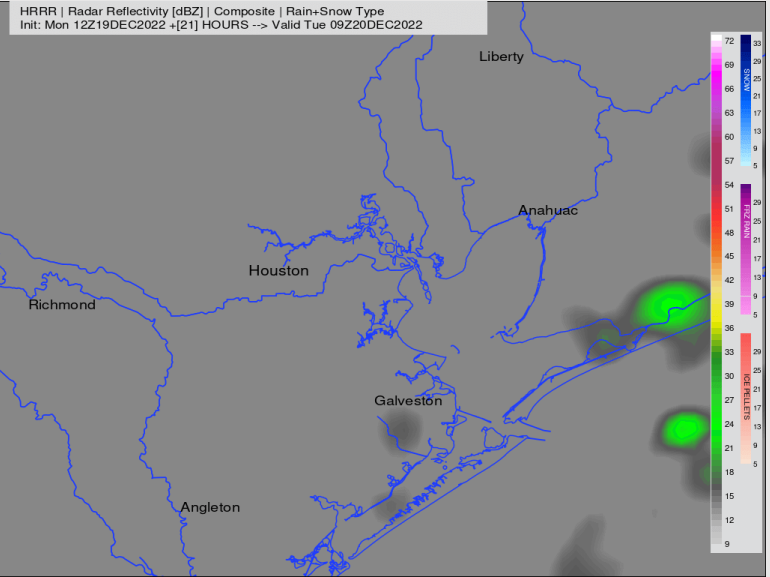
Precip: A few spotty showers/ drizzle can linger into the early morning hours of TUE (20 – 30%) to roughly 5 AM. Currently anticipating dry thereafter

Wind: NE winds shift more out of the NNE right after midnight into the very early morning hours. Sustained winds for points along/ south Morgan’s Point will sustained around 13 – 19 knots with gusts around 22 – 26 knots (windiest towards the boarding station). North of Morgan's point, sustained winds around 8 – 13 knots are expected with gusts around 15 – 17 knots. Winds will be rather consistent during the day/ evening. However, after roughly 5 PM, sustained winds north of Morgan’s Point will weaken to 3 – 7 knots sustained.

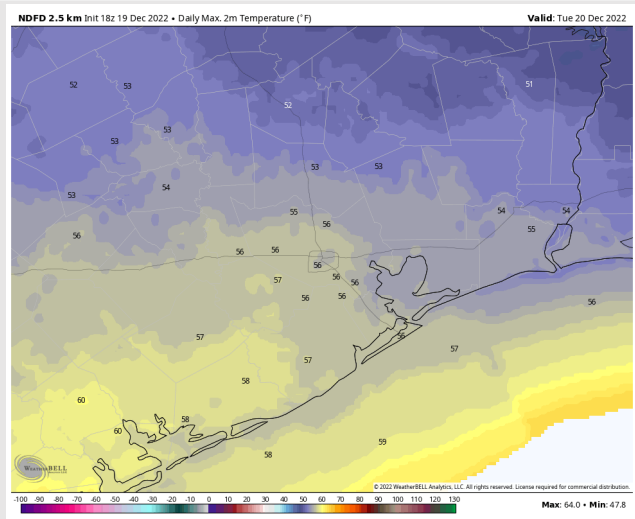
Temps: High temps on Tuesday will be in the mid to upper 50s F across all stations.

Visibility: Not anticipating any visibility concerns.

Precip Forecast: 3 AM CT



Wind Speed
9 AM CT

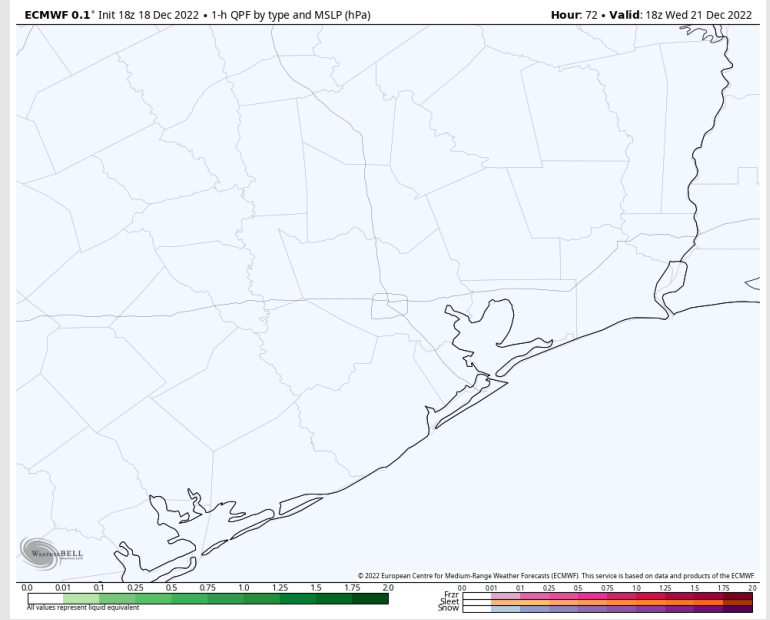


High Temps

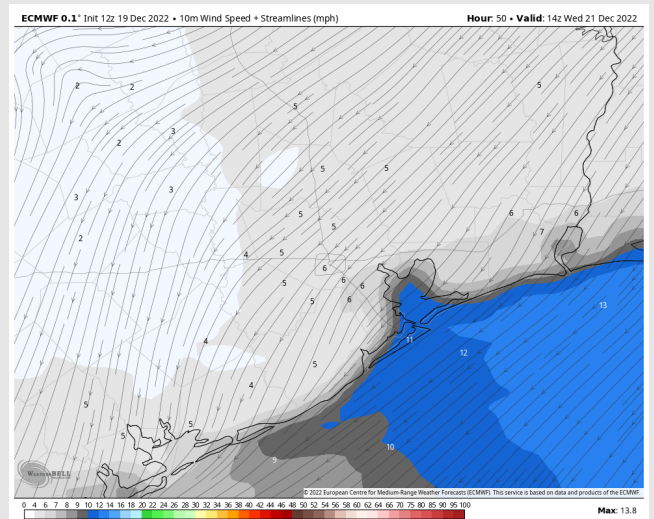
Forecast Discussion

- Precip:** Anticipating dry conditions for Wednesday.
- Wind:** Winds will be on a calming trend through the AM hours of Wednesday. By 7 AM, winds south of Morgan's Point are anticipated to be sustained from the NE around 7 – 12 knots. Winds continue to weaken into the afternoon with winds shifting more out of the east.
- Temps:** High temps Wednesday will be in the mid to lower 50s F across all stations.
- Visibility:** Not anticipating any visibility concerns at this time.

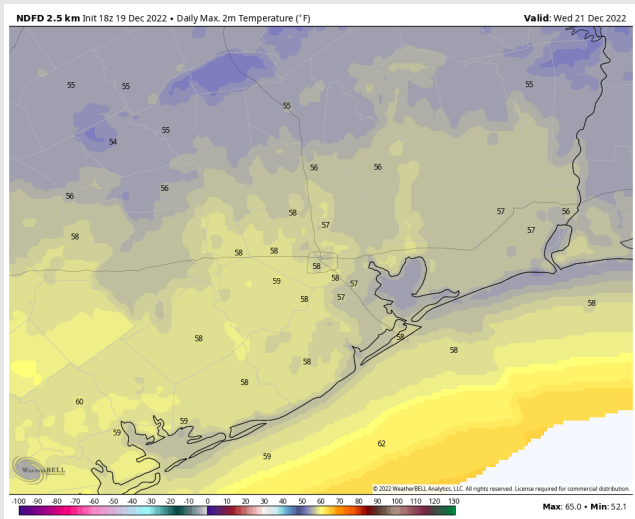
Precip Forecast: 12 PM CT



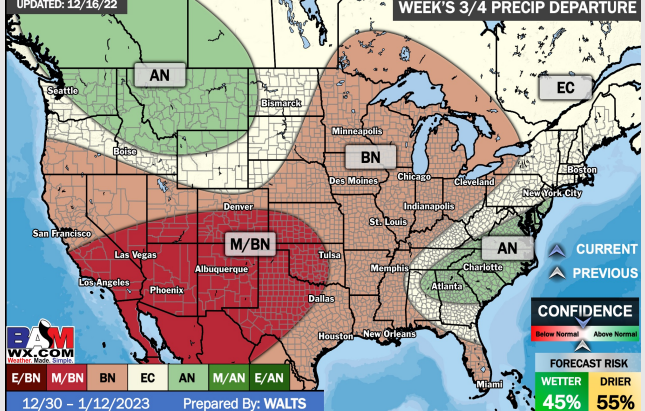
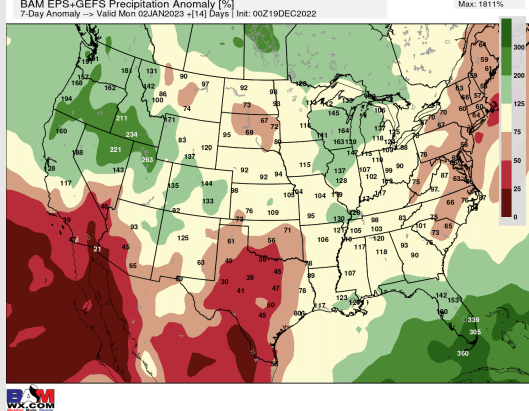
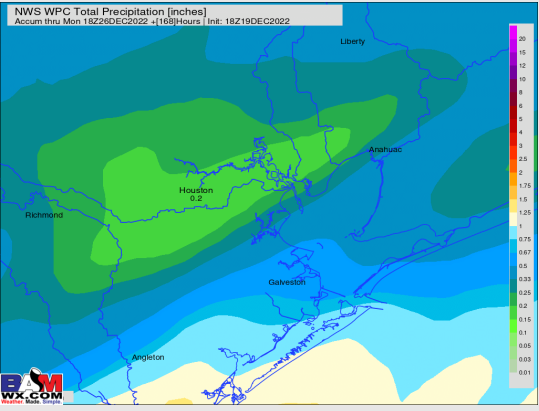
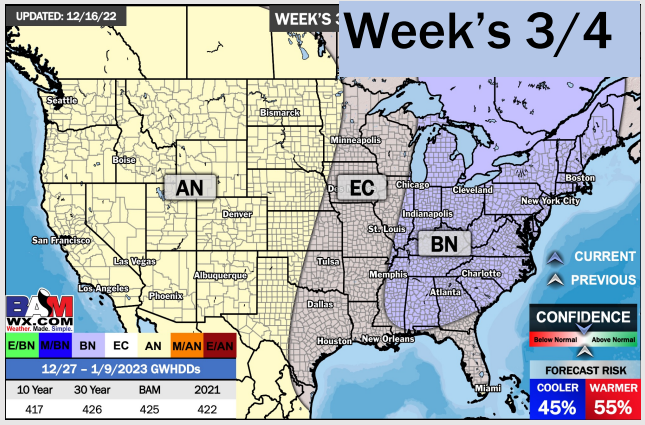
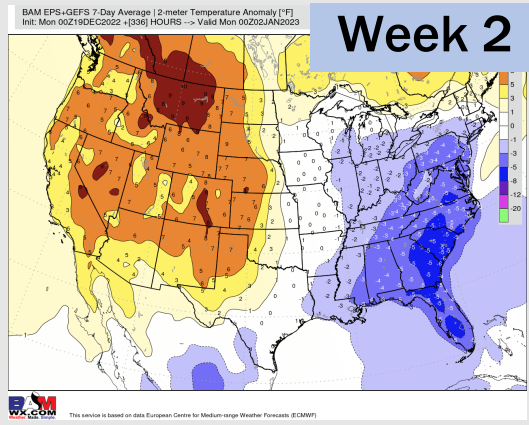
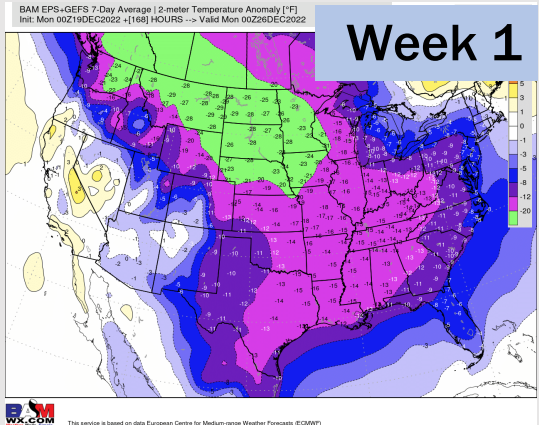
Wind Speed
8 AM CT



High Temps
Wednesday



Houston Pilots: 12/19/22



- Rain today exits tomorrow morning. Minor rain chances on THU and again next MON.
- Week 2 precipitation is expected to be at/ below normal for the week 2 timeframe. Temperatures are expected to average out at/ below normal.
- The weeks 3/4 timeframe looks to feature normal temperatures and below normal chances for precipitation.