

# Houston Pilots Forecast Package



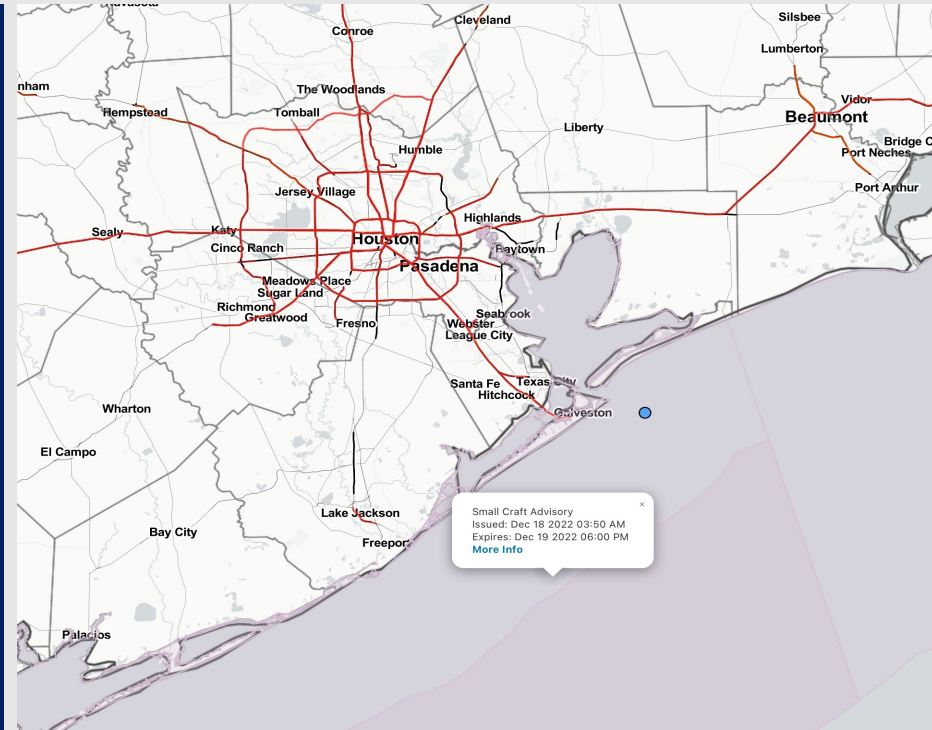
Updated: 12:30 PM CT

Sunday, December 18, 2022

Forecaster: Alyssa McClung

## Weather Headlines

- Anticipating dry conditions for the rest of today and Tuesday. Monday looks to bring a good deal of showers / storms.
- Monday and Tuesday will hold elevated winds in the 25 - 30 kt range in terms of gusts, with Monday's gusts ranging from 28 - 33 kts. Otherwise, expecting winds in the 10 - 15 kt range.
- The pattern ahead looks rather unfavorable for fog. We will watch trends closely, but a primarily Northerly wind with drier air should really limit fog chances over the next 7-10 days.
- Towards the end of the week temperatures are expected to be well below average.



Radar/NWS Alerts: 12:30 PM CT



As always, please do not hesitate to reach out to us with any forecast questions via the chat option on the Weather Porthole or our on-call number, **(317)-560-8122** press 1 for forecast questions.

# Houston Pilots Extended Range Visibility Report



## Wednesday 12/21/22

No Fog expected for Wednesday



## Thursday 12/22/22

No Fog expected for Thursday



## Friday 12/23/22

No Fog expected for Friday



## Chance for Reduced Visibility

Wednesday AM	Unlikely
Wednesday PM	Unlikely
Thursday AM	Unlikely
Thursday PM	Unlikely
Friday AM	Unlikely
Friday PM	Unlikely

# Houston Pilots Visibility Report



Time	Sun 11am	Sun 12pm	Sun 1pm	Sun 2pm	Sun 3pm	Sun 4pm	Sun 5pm	Sun 6pm	Sun 7pm	Sun 8pm	Sun 9pm	Sun 10pm	Sun 11pm	Mon 12am	Mon 1am	Mon 2am	Mon 3am	Mon 4am	Mon 5am	Mon 6am	Mon 7am	Mon 8am	Mon 9am	Mon 10am	Mon 11am	Mon 12pm	Mon 1pm	Mon 2pm	Mon 3pm	Mon 4pm	Mon 5pm	Mon 6pm	Mon 7pm	Mon 8pm	Mon 9pm	Mon 10pm	
610 Bridge	10	10	10	10	10	10	10	10	10	10	10	10	10	10	10	10	10	10	10	10	10	6	4	3	2	2	2	2	2	2	3	4	4	4	5	4	
Kinder 1	10	10	10	10	10	10	10	10	10	10	10	10	10	10	10	10	10	10	10	10	10	6	4	3	2	2	2	2	2	3	4	4	4	5	4		
Greens Bayou	10	10	10	10	10	10	10	10	10	10	10	10	10	10	10	10	9	10	10	10	10	6	4	3	2	2	2	2	3	4	4	4	4	5	4		
Shell Crude	10	10	10	10	10	10	10	10	10	10	10	10	10	10	10	9	9	10	10	10	10	7	4	3	2	2	2	2	2	3	4	5	5	5	5	5	
Lynchburg Ferries	10	10	10	10	10	10	10	10	10	10	10	10	10	10	10	9	9	10	10	10	10	7	4	3	2	2	2	2	2	3	4	5	5	5	5	5	
Exxon 3	10	10	10	10	10	10	10	10	10	10	10	10	10	10	10	9	9	10	10	10	10	7	5	3	3	3	2	2	2	3	4	5	5	5	5	5	
Morgans Point	10	10	10	10	10	10	10	10	10	10	10	10	10	10	10	9	9	10	10	10	10	7	6	3	3	3	2	2	2	4	5	5	5	5	5	6	5
75/76	10	10	10	10	10	10	10	10	10	10	10	10	10	10	10	9	10	10	10	10	10	8	7	3	3	3	2	2	1	4	6	6	6	6	6	6	6
63/64	10	10	10	10	10	10	10	10	10	10	10	10	10	10	10	9	10	10	10	10	10	8	7	3	4	4	2	1	1	4	6	6	7	7	7	7	7
51/52	10	10	10	10	10	10	10	10	10	10	10	10	10	10	10	10	10	10	10	10	10	8	7	4	5	5	2	1	1	4	6	7	7	7	7	7	7
37/38	10	10	10	10	10	10	10	10	10	10	10	10	10	10	10	10	10	10	10	10	9	8	7	5	5	5	2	1	1	2	6	6	6	6	6	6	6
25/26	10	10	10	10	10	10	10	10	10	10	10	10	10	9	10	10	10	10	10	10	9	8	7	5	6	5	2	0.9	1	1	6	6	7	7	7	7	7
11/12	10	10	10	10	10	10	10	10	10	10	10	9	9	9	10	10	10	10	10	10	10	9	8	5	7	5	3	0.66	1	1	5	7	7	7	7	7	7
1 & 2 Bravo	10	10	10	10	10	10	10	10	10	10	10	9	9	8	9	10	10	10	10	10	10	10	9	6	8	6	4	1	2	0.61	3	7	7	7	7	7	7

# Houston Pilots Wind Report



**Example**

Sustained wind 13 Knots  
 Gusts 18 Knots  
 Wind from the N

WS: 13  
 G:18  
 N

Time Knots	Sun 11am	Sun 12pm	Sun 1pm	Sun 2pm	Sun 3pm	Sun 4pm	Sun 5pm	Sun 6pm	Sun 7pm	Sun 8pm	Sun 9pm	Sun 10pm	Sun 11pm	Mon 12am	Mon 1am	Mon 2am	Mon 3am	Mon 4am	Mon 5am	Mon 6am	Mon 7am	Mon 8am	Mon 9am	Mon 10am	Mon 11am	Mon 12pm	Mon 1pm	Mon 2pm	Mon 3pm	Mon 4pm	Mon 5pm	Mon 6pm	Mon 7pm	Mon 8pm	Mon 9pm	Mon 10pm			
610 Bridge	9	9	9	8	7	6	6	6	7	7	8	8	7	7	8	8	9	10	10	10	10	11	11	12	12	12	11	11	11	11	12	12	11	11	10	9	9		
	17	14	12	12	11	10	11	13	15	16	19	17	17	17	18	13	14	14	16	16	17	19	20	21	20	19	18	18	17	18	17	17	16	14	14	14			
	ENE	ENE	E	E	E	E	E	E	E	E	E	E	E	ENE	E	ENE	ENE	ENE	ENE	ENE	ENE	ENE	ENE	ENE	ENE	ENE	ENE	ENE	ENE	ENE	ENE	ENE	ENE	ENE	ENE	NNE	NNE		
Kinder 1	9	9	8	8	7	6	6	6	7	7	8	8	7	7	8	7	8	8	10	10	10	10	11	12	12	12	11	11	11	11	12	12	11	10	10	8	9		
	17	14	12	11	11	10	11	13	15	16	19	17	17	17	18	13	14	14	16	16	17	19	20	21	20	19	18	18	17	18	17	17	16	14	14	14			
	ENE	ENE	E	E	E	E	E	E	E	E	E	E	E	ENE	ENE	ENE	ENE	ENE	ENE	ENE	ENE	ENE	ENE	ENE	ENE	ENE	ENE	ENE	ENE	ENE	ENE	ENE	ENE	ENE	ENE	NNE	NNE		
Greens Bayou	9	9	8	8	8	6	6	6	6	8	8	8	7	8	9	7	8	9	10	10	10	11	12	12	12	11	11	12	12	12	12	11	11	10	8	9			
	17	14	12	11	11	10	11	13	15	16	19	18	17	18	18	13	14	14	16	16	17	19	20	21	20	19	18	18	17	18	17	16	16	14	14	14			
	ENE	ENE	E	E	E	E	E	E	E	E	E	E	E	ENE	ENE	ENE	ENE	ENE	ENE	ENE	ENE	ENE	ENE	ENE	ENE	ENE	ENE	ENE	ENE	ENE	ENE	ENE	ENE	ENE	ENE	NNE	NNE		
Shell Crude	9	9	9	8	8	6	6	6	7	7	8	8	7	8	9	8	9	9	11	11	11	12	13	13	13	12	12	12	13	13	12	12	11	10	9	10			
	17	14	12	12	11	10	11	13	15	16	19	18	17	18	18	14	14	15	16	17	17	19	20	20	20	19	19	18	18	18	17	17	16	15	14	14			
	ENE	ENE	ENE	ENE	E	E	E	ENE	E	E	E	E	E	ENE	ENE	ENE	ENE	ENE	ENE	ENE	ENE	ENE	ENE	ENE	ENE	ENE	ENE	ENE	ENE	ENE	ENE	ENE	ENE	ENE	ENE	ENE	NNE	NNE	
Lynchburg Ferries	9	9	8	8	7	6	6	6	7	7	8	8	7	8	9	10	10	11	12	13	13	13	14	13	12	12	12	13	13	13	13	13	13	13	12	11	10		
	17	14	12	11	11	10	11	13	15	16	18	18	16	18	18	15	15	15	17	18	18	19	20	20	20	18	19	18	18	17	17	17	16	15	15	15			
	ENE	ENE	ENE	ENE	E	E	ENE	ENE	ENE	E	E	E	E	ENE	ENE	ENE	ENE	ENE	ENE	ENE	ENE	ENE	ENE	ENE	ENE	ENE	ENE	ENE	ENE	ENE	ENE	ENE	ENE	ENE	ENE	ENE	NNE	NNE	
Exxon 3	11	10	9	9	8	6	7	7	9	9	10	9	9	10	10	11	11	12	13	14	14	15	15	14	14	13	13	13	13	14	13	13	12	12	11	11			
	18	15	12	12	11	10	12	13	16	16	18	17	17	18	17	15	15	16	17	18	19	20	20	20	20	19	19	18	17	18	17	17	16	15	15	15			
	ENE	ENE	ENE	ENE	E	E	ENE	E	ENE	ENE	E	ENE	ENE	ENE	ENE	ENE	ENE	ENE	ENE	ENE	ENE	ENE	ENE	ENE	ENE	ENE	ENE	ENE	ENE	ENE	ENE	ENE	ENE	ENE	ENE	ENE	NNE	NNE	
Morgans Point	17	15	13	12	12	11	12	14	16	17	18	16	16	17	19	13	13	13	14	14	15	15	15	15	15	15	15	14	14	14	14	14	13	12	12	12			
	20	17	15	14	13	12	13	14	17	17	19	18	18	19	21	17	17	17	18	19	20	21	22	21	22	21	20	19	19	18	19	18	19	18	17	16	16		
	ENE	ENE	ENE	ENE	E	E	E	E	E	E	E	E	E	ENE	E	ENE	ENE	ENE	ENE	ENE	ENE	ENE	ENE	ENE	ENE	ENE	ENE	ENE	ENE	ENE	ENE	ENE	ENE	ENE	ENE	ENE	NNE	NNE	
75/76	17	15	13	12	12	11	12	14	17	17	18	16	16	18	19	14	14	14	15	16	16	17	17	17	16	16	15	15	15	15	15	15	15	15	15	14	14		
	20	17	15	14	13	12	13	15	17	18	19	19	19	20	21	17	17	17	18	19	20	21	22	22	22	21	20	19	19	19	19	19	19	18	18	17	17		
	ENE	ENE	ENE	ENE	E	E	E	E	E	E	E	E	E	ENE	ENE	ENE	ENE	ENE	ENE	ENE	ENE	ENE	ENE	ENE	ENE	ENE	ENE	ENE	ENE	ENE	ENE	ENE	ENE	ENE	ENE	ENE	ENE	NNE	NNE
63/64	17	15	13	12	12	11	12	14	17	17	18	16	16	18	19	14	14	15	15	16	17	17	17	17	16	16	16	16	16	16	16	16	15	14	14	14			
	20	17	15	14	13	12	13	15	17	18	20	19	19	20	21	17	17	17	18	19	21	22	23	23	23	23	21	21	20	19	19	19	19	18	17	17			
	ENE	ENE	ENE	ENE	E	E	E	E	E	E	ENE	ENE	ENE	ENE	ENE	ENE	ENE	ENE	ENE	ENE	ENE	ENE	ENE	ENE	ENE	ENE	ENE	ENE	ENE	ENE	ENE	ENE	ENE	ENE	ENE	ENE	ENE	NNE	NNE
51/52	18	16	14	13	12	13	14	15	16	17	19	16	16	17	18	14	15	15	16	17	17	17	18	17	18	17	17	16	16	16	16	16	16	15	14	14			
	20	17	15	14	14	14	16	17	18	18	21	20	20	19	20	17	17	17	19	20	21	22	24	24	24	24	24	23	21	21	20	20	19	19	19	19	17		
	ENE	ENE	ENE	ENE	E	E	E	E	ENE	ENE	ENE	ENE	ENE	ENE	E	ENE	ENE	ENE	ENE	ENE	ENE	ENE	ENE	ENE	ENE	ENE	ENE	ENE	ENE	ENE	ENE	ENE	ENE	ENE	ENE	ENE	ENE	NNE	NNE
37/38	18	16	15	15	14	14	15	15	16	17	19	16	16	16	15	15	16	16	17	17	18	19	18	18	18	17	17	16	16	16	16	16	16	16	16	16	15	15	
	20	19	17	17	16	16	17	17	18	18	21	20	19	19	17	17	18	19	20	21	23	24	25	25	25	24	22	22	22	22	21	20	20	19	18	18			
	ENE	ENE	ENE	ENE	E	E	E	E	E	E	ENE	ENE	ENE	E	E	E	E	E	E	E	E	E	E	E	E	E	E	E	E	E	E	E	E	E	E	E	E	NNE	NNE
25/26	20	19	18	17	16	15	16	16	17	18	19	16	17	17	16	16	16	17	17	18	19	19	19	19	18	18	17	17	16	16	16	16	16	16	16	15	15		
	22	21	19	19	17	17	17	18	18	18	20	21	18	19	18	18	18	19	20	21	22	23	25	26	26	26	25	25	24	23	23	23	21	20	20	20	18		
	ENE	ENE	ENE	ENE	E	E	E	ENE	E	E	E	E	E	E	E	E	E	E	E	E	E	E	E	E	E	E	E	E	E	E	E	E	E	E	E	E	E	E	NNE
11/12	21	20	19	18	17	16	16	17	18	18	19	20	17	17	18	16	17	17	18	18	20	20	20	20	20	19	18	17	17	17	17	17	17	17	17	17	16		
	22	21	19	19	18	17	17	18	19	18	20	22	18	19	18	18	19	20	21	22	24	26	27	27	26	26	25	24	24	24	24	24	24	22	21	21	21	19	
	ENE	ENE	ENE	ENE	ENE	E	ENE	ENE	E	E	E	E	E	E	E	E	E	E	E	E	E	E	E	E	E	E	E	E	E	E	E	E	E	E	E	E	E	E	NNE
1 & 2 Bravo	21	21	19	19	17	17	16	17	18	18	19	20	20	18	18	17	17	17	17	19	19	20	21	21	20	20	19	19	18	18	18	18	18	18	18	17	17		
	22	22	20	20	18	18	17	19	19	19	20	22	22	19	19	18	18	19	20	22	23	25	27	28	28	27	27	26	25	25	24	22	22	21	21	21	20		
	ENE	ENE	ENE	ENE	ENE	E	ENE	ENE	E	E	E	E	E	E	E	E	E	E	E	E	E	E	E	E	E	E	E	E	E	E	E	E	E	E	E	E	E	E	NNE

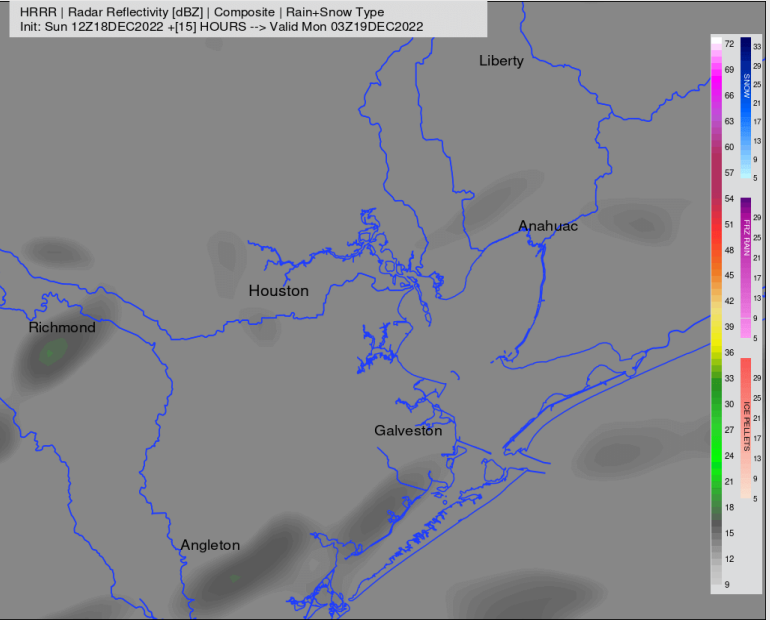
# Houston Pilots: Sun. 12/18/2022



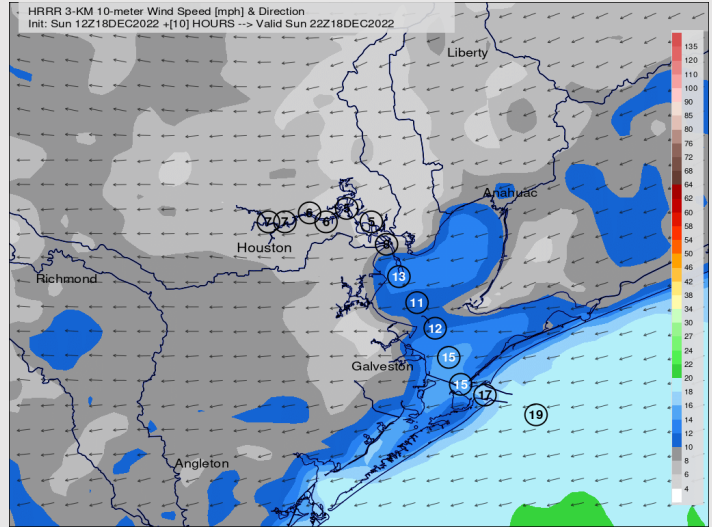
## Forecast Discussion

- Precip:** Anticipating dry conditions Today.
- Wind:** Sustained winds beginning to gradually decrease to 10 - 15 kts at all stations for the rest of the day. Gusts at the Boarding Stations of 25 kts likely.
- Temps:** Low temps Monday morning will be in the mid 50s F at the Boarding Station and in the upper 40s F at all other stations.
- Visibility:** Not anticipating any visibility concerns at this time.

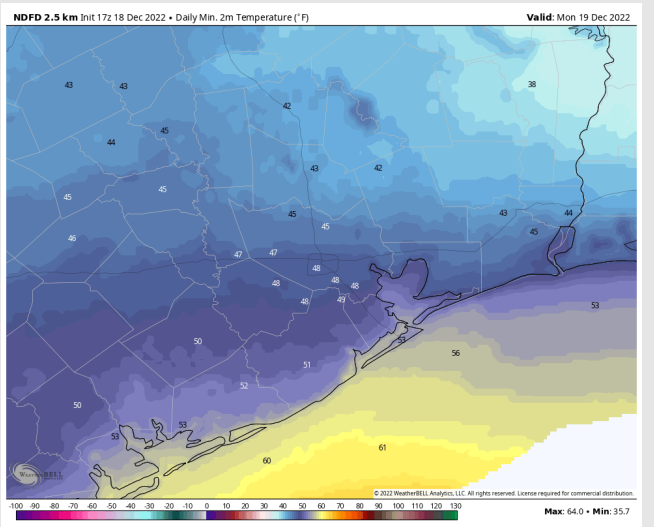
## Precip Forecast: 12 PM CT



Wind Speed  
4 PM CT



Low Temps  
Monday



# Houston Pilots: Mon. 12/19/2022



## Forecast Discussion

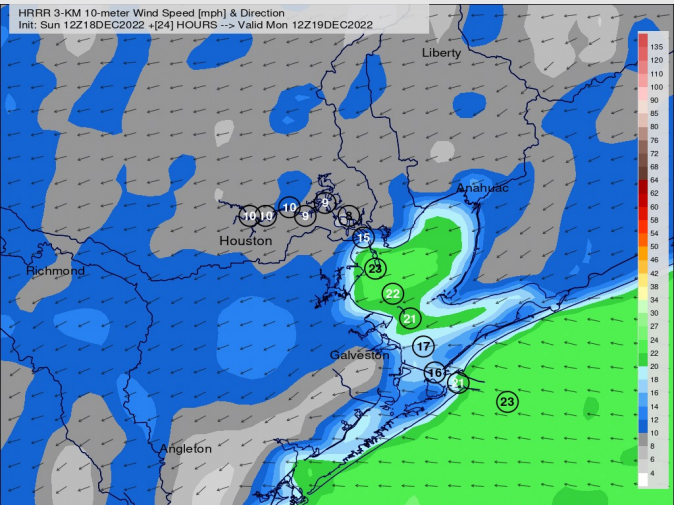
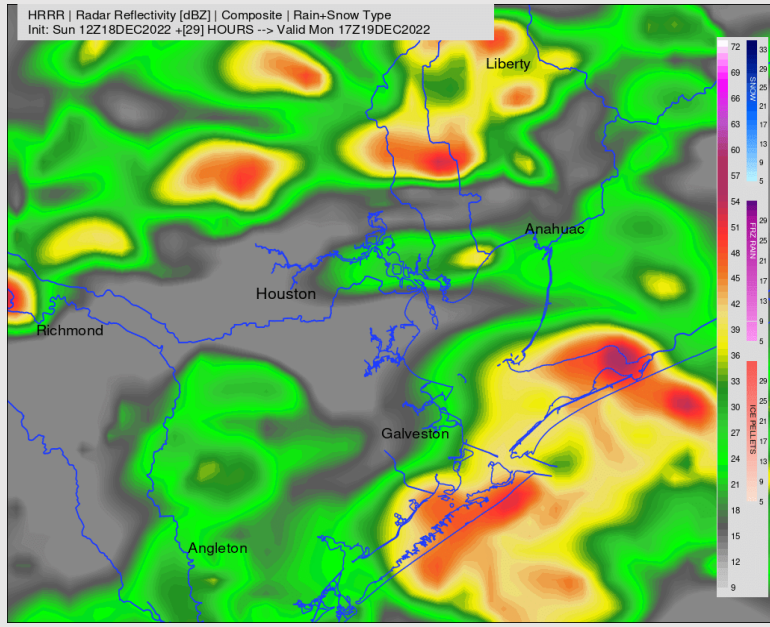
**Precip:** Favoring dry conditions until about 4 AM, where spotty showers will begin to enter the region. As the day progresses, shower chances will increase, with the greatest chance of seeing storms between 11 AM – 8 PM. After 10 PM, showers will taper off, yielding dry conditions for the rest of the overnight. Storms will pose a risk for hail and an isolated tornado or two.

**Wind:** Sustained winds will vary between ESE and ENE for the majority of the day. By 5 AM, winds N of Morgan's Point will be 11 – 15 kts, and S of Morgan's Point will be 18 – 24 kts. Towards the midnight hour winds will begin to subside to 7 – 10 kts N of Morgan's Point and 14 – 18 kts S of Morgan's Point. **Wind gusts can be as high as 28 – 33 kts south of station 37/38 from 7 AM – 2 PM. Otherwise, all stations can expect to see gusts of up to 25 kts during this timeframe.** Winds will shift out of the NE after 7 PM.

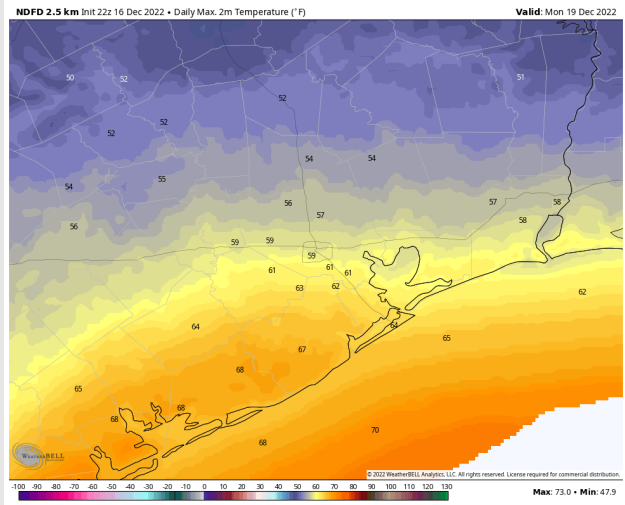
**Temps:** High temps Saturday will be in the upper 50s F / low 60s F for most stations with the Boarding Station seeing a high in the mid 60s F.

**Visibility:** Not anticipating any visibility concerns at this time.

## Precip Forecast: 11 AM CT



Wind Speed  
6 AM CT



High Temps  
Monday

# Houston Pilots: Tue. 12/20/2022



## Forecast Discussion

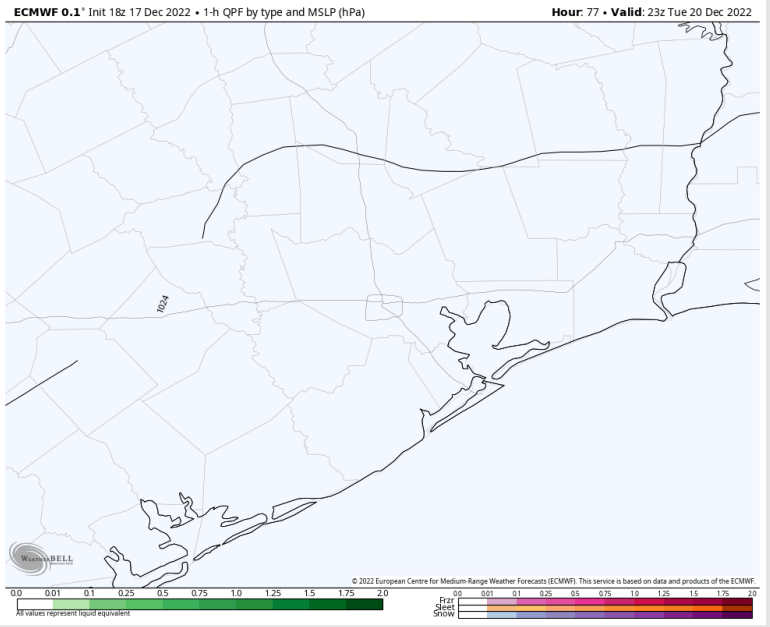
**Precip:** A slight (20%) chance for lingering showers during the morning from 12 AM – 6 AM. After this timeframe, anticipating dry conditions.

**Wind:** Favoring sustained winds from the north to NNE for the day. Winds north of Morgan’s point will be at 7 – 12 kts, while winds S of Morgan’s point will be elevated at 12 – 17 kts. At around 5 PM, winds will calm slightly North of Morgan’s point to 4 – 8 kts. Wind gusts of 17 – 22 kts will be possible across all stations during the 10 AM – 5 PM timeframe.

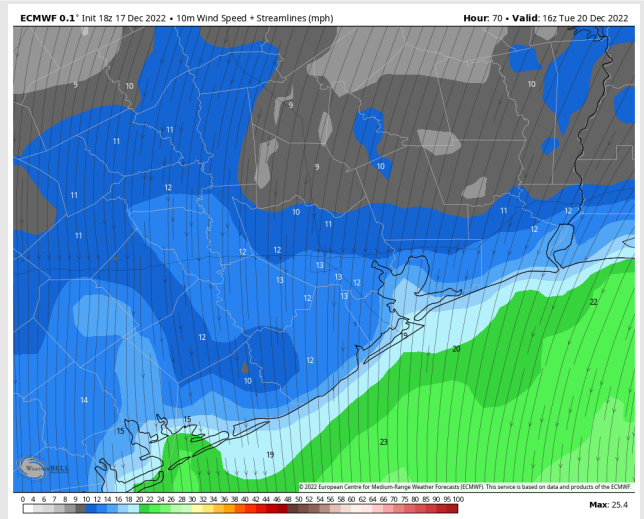
**Temps:** High temps on Tuesday will be in the mid to upper 50s F across all stations.

**Visibility:** Not anticipating any visibility concerns.

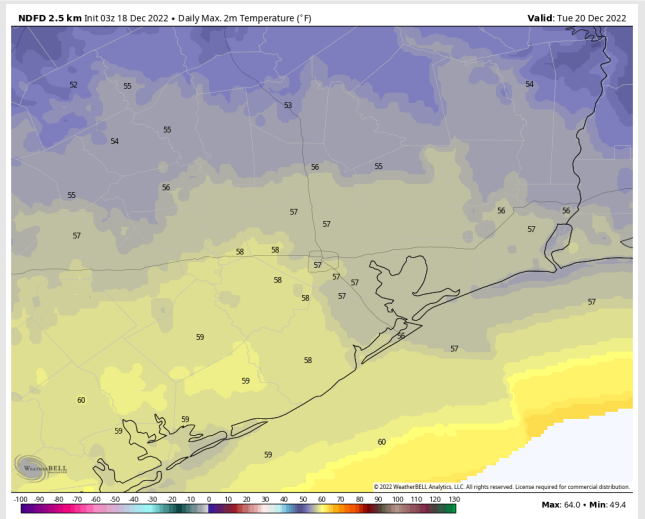
## Precip Forecast: 4 PM CT



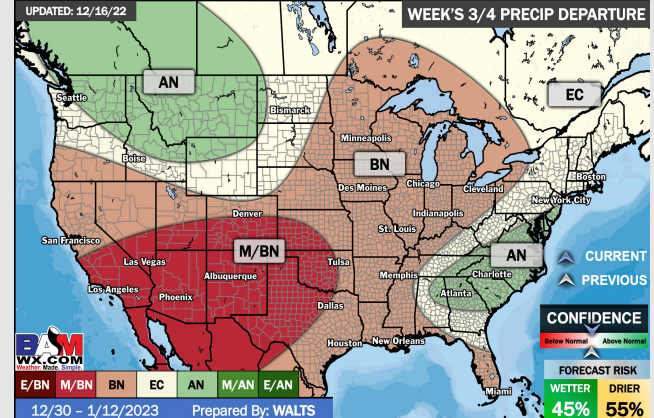
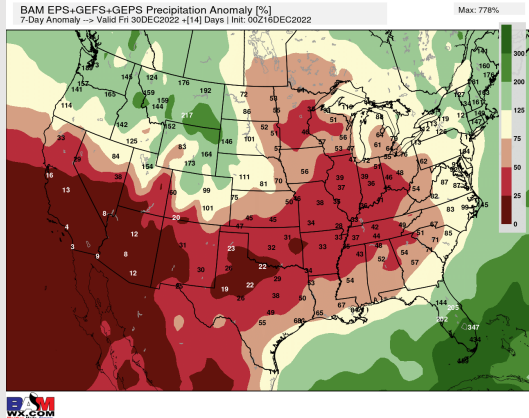
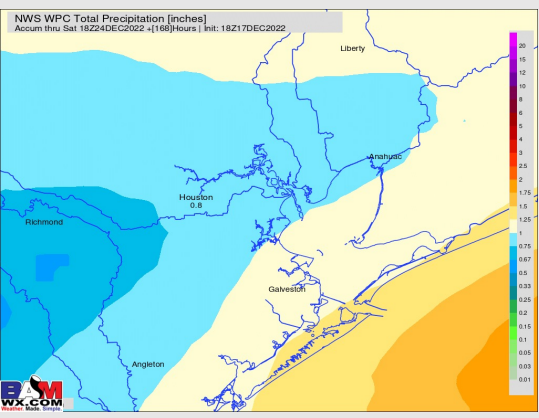
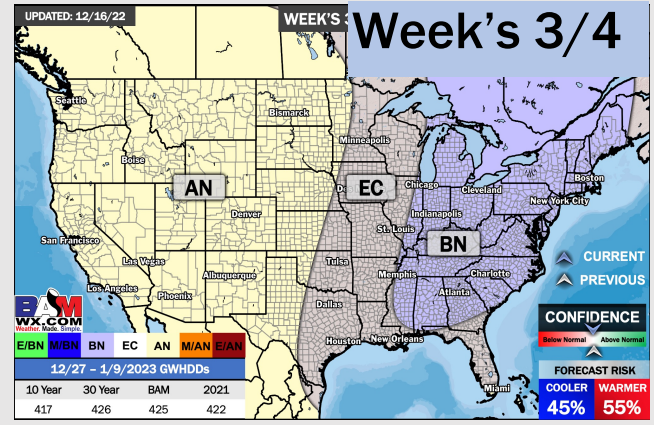
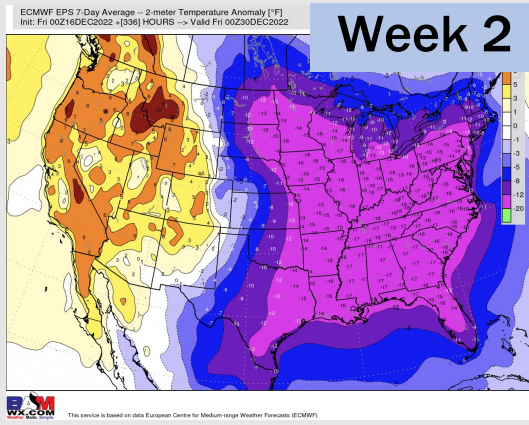
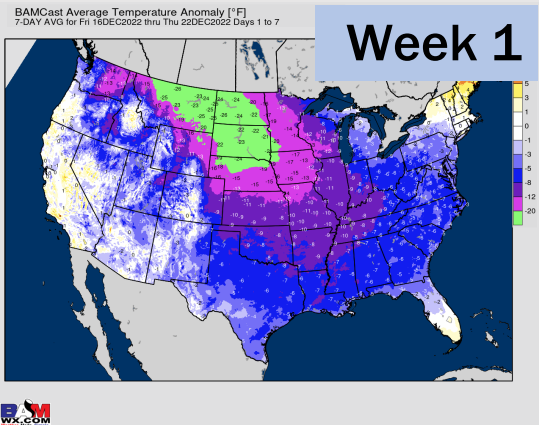
Wind Speed  
10 AM CT



Low Temps  
Sunday AM



# Houston Pilots: 12/18/22



- Better rain chances arrive next Mon/Tue. Temps will be falling below average.
- Week 2 is expected to be much below normal for temperatures and near to below normal rain chances for late December.
- The weeks 3/4 timeframe looks to feature normal temperatures and below normal chances for precipitation.