

Houston Pilots Forecast Package



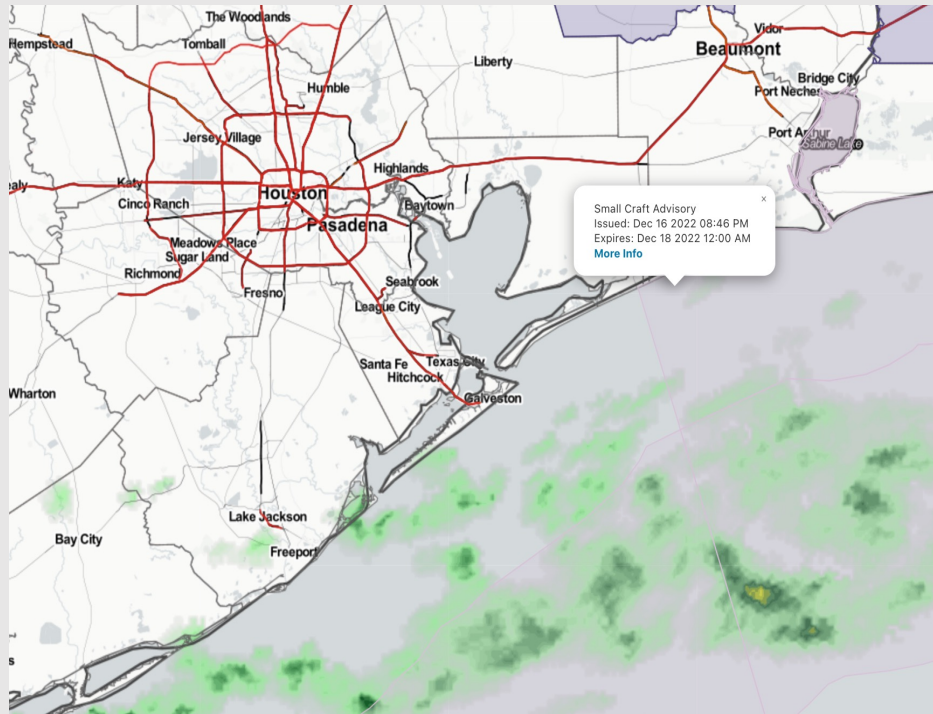
Updated: 2:00 PM CT

Saturday, December 17, 2022

Forecaster: Tyler Hollingsworth

Weather Headlines

- Anticipating scattered showers to work through this early afternoon. Next best shot of rain will come Monday where widespread showers are expected throughout the late morning/early afternoon.
- Today and Monday will hold elevated winds in the 25 – 30 kt range in terms of gusts. Gusts could range from 28 – 33 kts Monday. Otherwise, expecting winds in the 15 – 20 kt range.
- The pattern ahead looks rather unfavorable for fog. We will watch trends closely, but a primarily Northerly wind should really limit fog chances over the next 7-10 days.



Radar/NWS Alerts: 1:52 PM CT



As always, please do not hesitate to reach out to us with any forecast questions via the chat option on the Weather Porthole or our on-call number, **(317)-560-8122** press 1 for forecast questions.

Houston Pilots Extended Range Visibility Report



Tuesday 12/20/22

No Fog expected for Tuesday



Wednesday 12/21/22

No Fog expected for Wednesday.



Thursday 12/22/22

No Fog expected for Thursday.



Chance for Reduced Visibility

Tuesday AM	Unlikely
Tuesday PM	Unlikely
Wednesday AM	Unlikely
Wednesday PM	Unlikely
Thursday AM	Unlikely
Thursday PM	Unlikely

Houston Pilots Wind Report



Confidence



Example

Sustained wind 13 Knots
Gusts 18 Knots
Wind from the N

WS: 13
G:18
N

Time Knots	Sat 1pm	Sat 2pm	Sat 3pm	Sat 4pm	Sat 5pm	Sat 6pm	Sat 7pm	Sat 8pm	Sat 9pm	Sat 10pm	Sat 11pm	Sun 12am	Sun 1am	Sun 2am	Sun 3am	Sun 4am	Sun 5am	Sun 6am	Sun 7am	Sun 8am	Sun 9am	Sun 10am	Sun 11am	Sun 12pm	Sun 1pm	Sun 2pm	Sun 3pm	Sun 4pm	Sun 5pm	Sun 6pm	Sun 7pm	Sun 8pm	Sun 9pm	Sun 10pm	Sun 11pm	Mon 12am	
610 Bridge	7 N	8 N	8 N	7 NNE	6 NNE	4 NE	3 NE	4 NE	4 NE	4 NE	4 NE	4 NE	4 NNE	4 NNE	5 NE	6 NE	6 NE	7 NE	7 NE	8 NE	9 ENE	9 ENE	10 ENE	9 E	9 E	9 E	9 E	10 E	9 E	8 E	9 E	9 E	9 E	9 E	9 E	8 E	
Kinder 1	7 N	8 N	8 N	7 NNE	6 NNE	4 NE	3 NE	4 NE	4 NE	4 NE	4 NE	4 NE	4 NNE	4 NNE	5 NE	5 NE	6 NE	7 NE	6 NE	7 NE	9 ENE	9 ENE	10 ENE	9 E	9 E	9 E	9 E	10 E	9 E	8 E	8 E	8 E	8 E	9 E	8 E		
Greens Bayou	7 N	8 N	8 N	8 NNE	6 NNE	4 NNE	3 NNE	4 NE	4 NE	4 NE	4 NE	4 NE	4 NNE	4 NNE	5 NE	6 NE	6 NE	7 NE	6 NE	7 NE	9 ENE	9 ENE	10 ENE	9 E	9 E	9 E	9 E	9 E	9 E	9 E	8 E	8 E	8 E	9 E	9 E		
Shell Crude	7 N	8 N	8 N	8 NNE	6 NNE	4 N	3 N	4 NE	4 NE	4 NE	4 NE	5 NE	5 NE	5 NE	6 NE	7 NE	7 NE	7 NE	7 NE	8 NE	9 ENE	9 ENE	10 ENE	10 E	10 E	10 E	10 E	10 E	10 E	9 E	9 E	9 E	9 E	9 E	9 E	9 E	
Lynchburg Ferries	8 N	7 N	8 N	8 NNE	5 NNE	4 NNE	3 NNE	4 NE	4 NE	4 NE	4 NE	4 NNE	4 NNE	4 NNE	5 NE	6 NE	8 NE	9 NE	9 NE	9 NE	10 ENE	10 ENE	10 ENE	10 E	10 E	10 E	10 E	10 E	10 E	9 E	10 E	10 E	10 E	10 E	10 E	10 E	
Exxon 3	8 N	8 N	8 N	8 N	6 N	6 N	5 NNE	5 NNE	6 NE	6 NE	7 NE	7 NE	8 NE	8 NE	9 NE	9 NE	10 NE	10 NE	10 NE	10 NE	11 ENE	11 ENE	11 ENE	11 E	10 E	10 E	10 E	10 E	10 E	11 E	11 E	11 E	12 E	12 E	12 E	12 E	
Morgans Point	9 N	11 N	10 N	12 N	11 N	11 N	9 NNE	9 NNE	11 NE	12 NE	13 NE	13 NE	15 NNE	16 NNE	17 NNE	19 NNE	15 NE	16 NE	17 NE	17 NE	12 ENE	13 ENE	13 ENE	12 E	11 E	11 E	11 E	11 E	11 E	12 E	13 E	13 E	13 E	13 E	14 E	14 E	
75/76	10 N	11 N	11 N	15 N	14 N	13 N	11 NNE	12 NNE	13 NE	13 NE	14 NE	15 NE	15 NE	16 NE	17 NE	17 NE	13 NE	13 NE	14 NE	14 NE	14 ENE	15 ENE	14 ENE	14 E	13 E	12 E	12 E	12 E	12 E	13 E	14 E	14 E	14 E	14 E	14 E	14 E	
63/64	11 N	11 N	14 N	17 N	17 N	16 N	14 NNE	13 NNE	14 NE	14 NE	14 NE	15 NE	15 NE	16 NE	16 NE	18 NE	14 NE	15 NE	15 NE	15 NE	15 ENE	15 ENE	15 ENE	14 E	13 E	13 E	13 E	13 E	13 E	14 E	14 E	15 E	15 E	15 E	15 E	15 E	
51/52	13 N	12 N	14 N	17 N	17 N	16 NNE	16 NNE	14 NE	14 NE	14 NE	14 NE	15 NE	15 NE	16 NE	17 NE	18 NE	15 NE	16 NE	16 NE	16 NE	16 ENE	16 ENE	16 ENE	15 E	14 E	14 E	14 E	14 E	14 E	15 E	15 E	15 E	16 E	16 E	16 E	16 E	
37/38	13 N	12 N	14 N	17 N	17 N	16 N	16 NNE	16 NNE	16 NE	15 NE	15 NE	16 NE	16 NE	16 NE	16 NE	16 NE	16 NE	16 NE	16 NE	16 NE	16 ENE	16 ENE	16 ENE	15 E	15 E	14 E	15 E	15 E	15 E	15 E	16 E	16 E	16 E	16 E	16 E	17 E	17 E
25/26	15 N	13 N	14 N	16 N	16 N	17 N	16 NNE	16 NNE	16 NNE	16 NNE	16 NE	15 NE	16 NE	17 NNE	17 NNE	19 NNE	16 NE	16 NE	16 NE	16 NE	16 ENE	17 ENE	16 ENE	16 E	16 E	16 E	16 E	16 E	16 E	16 E	16 E	17 E	17 E	17 E	17 E	17 E	17 E
11/12	15 N	12 N	14 N	15 N	15 N	16 N	15 NNE	16 NNE	16 NNE	16 NNE	16 NE	16 NE	17 NNE	18 NNE	18 NNE	21 NNE	17 NE	17 NE	17 NE	17 NE	17 ENE	17 ENE	17 ENE	17 E	17 E	16 E	16 E	16 E	16 E	16 E	17 E	17 E	17 E	17 E	17 E	18 E	18 E
1 & 2 Bravo	17 N	13 N	12 N	16 N	17 N	17 N	17 NNE	17 NNE	17 NNE	17 NNE	17 NNE	17 NNE	18 NNE	19 NNE	20 NNE	17 NE	17 NE	17 NE	17 NE	18 NE	18 ENE	18 ENE	18 ENE	17 E	17 E	17 E	17 E	17 E	17 E	17 E	17 E	17 E	18 E	18 E	18 E	18 E	18 E

Houston Pilots: sat. 12/17/2022



Forecast Discussion

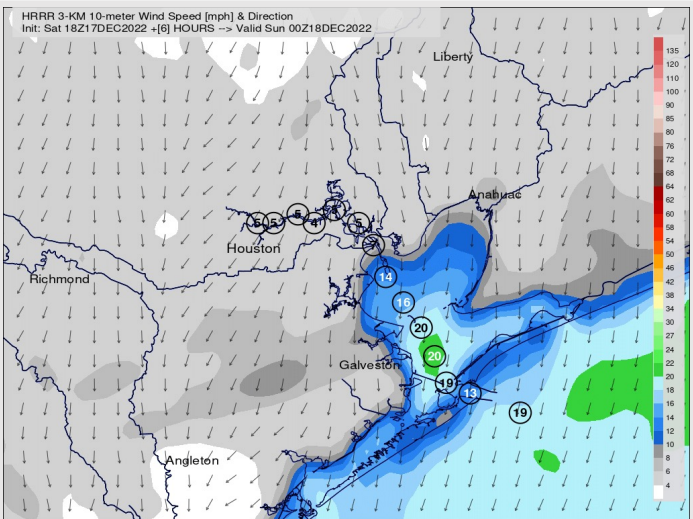
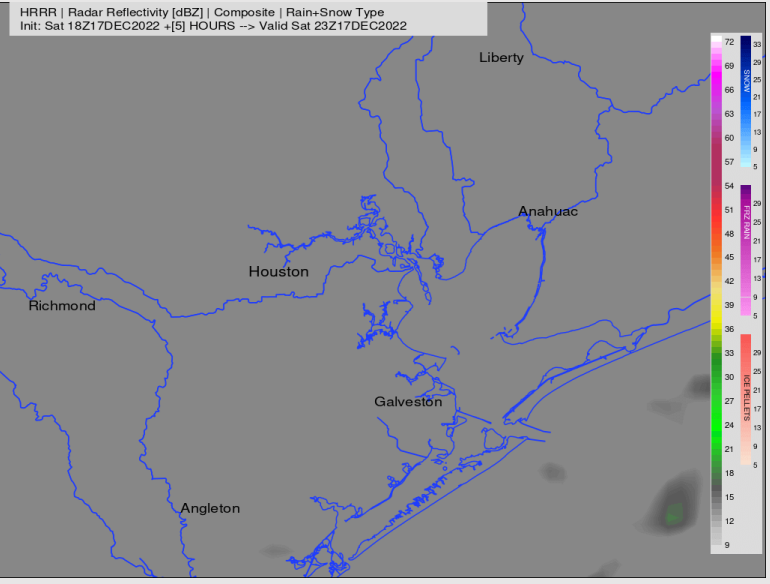
Precip: Eyeing 60% chances of lighter scattered rain showers until 3 PM. After 3 PM, favoring dry conditions the rest of the day.

Wind: Through the rest of the day, winds out of the NE at 15 - 20 kts. Winds north of Morgan's Point will be 4 - 9 kts throughout the day.

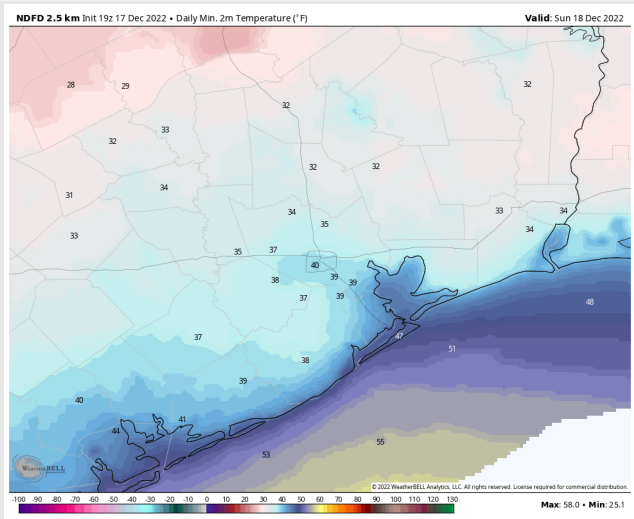
Temps: Lows for Sunday morning will sit in the mid 50s F for all stations.

Visibility: Not anticipating any visibility concerns.

Precip Forecast: 5 PM CT



Wind Speed
6 PM CT



Low Temps
Sunday AM

Houston Pilots: Sun. 12/18/2022

Forecast Discussion

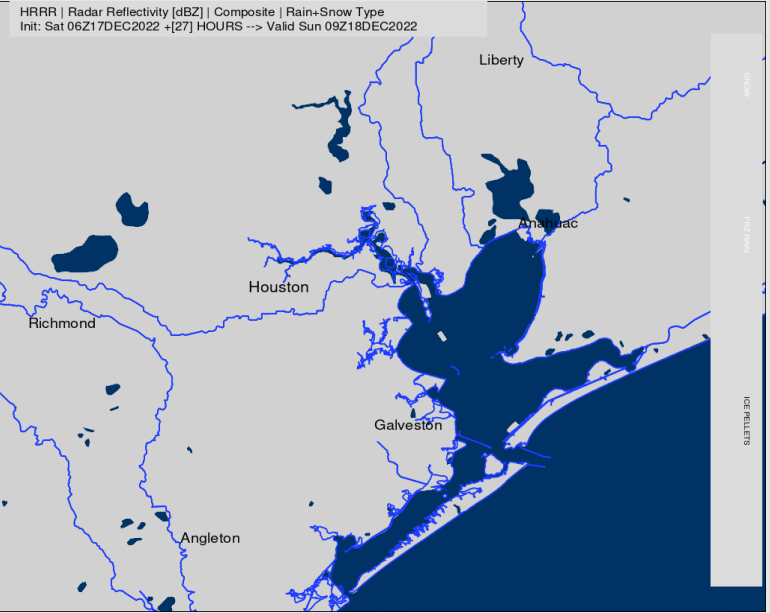
Precip: Anticipating dry conditions Sunday.

Wind: Sustained winds out of the ENE throughout the day Sunday. Winds early Sunday morning at 18 - 23 kts S of Morgan's Point and 5 - 10 kts N of Morgan's Point. After 12 PM CT, winds begin to gradually decrease to 9 - 15 kts at all stations for the rest of the day.

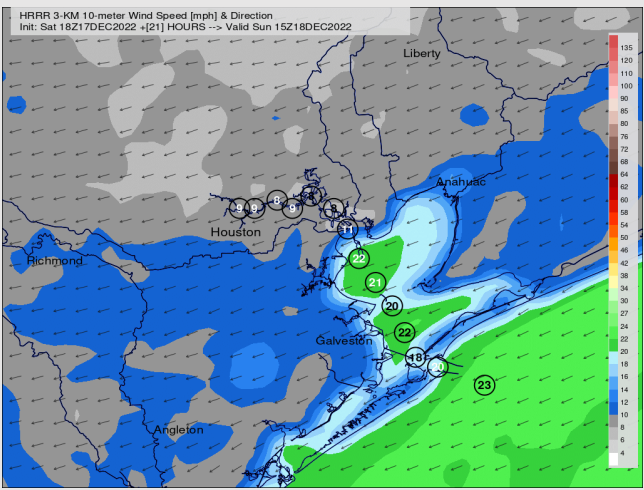
Temps: High temps Sunday will be in the mid 50s F for all stations.

Visibility: Not anticipating any visibility concerns at this time.

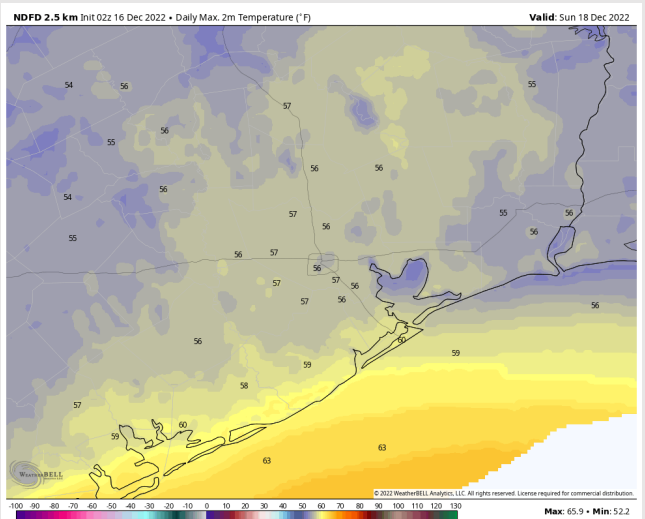
Precip Forecast: 12 PM CT



Wind Speed
9 AM CT



High Temps
Sunday



Houston Pilots: Mon. 12/19/2022



Forecast Discussion

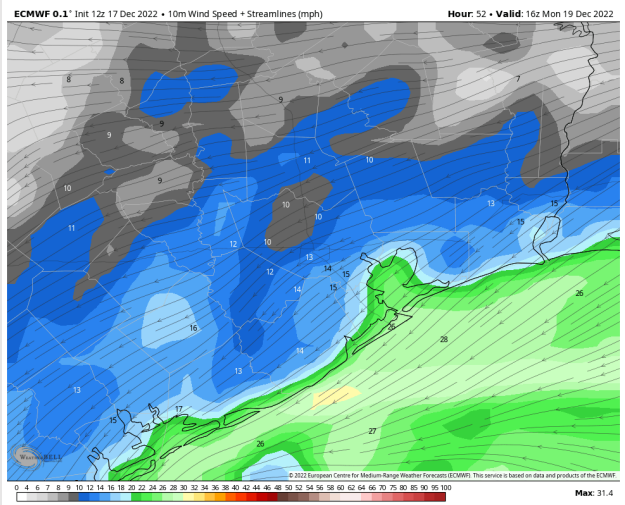
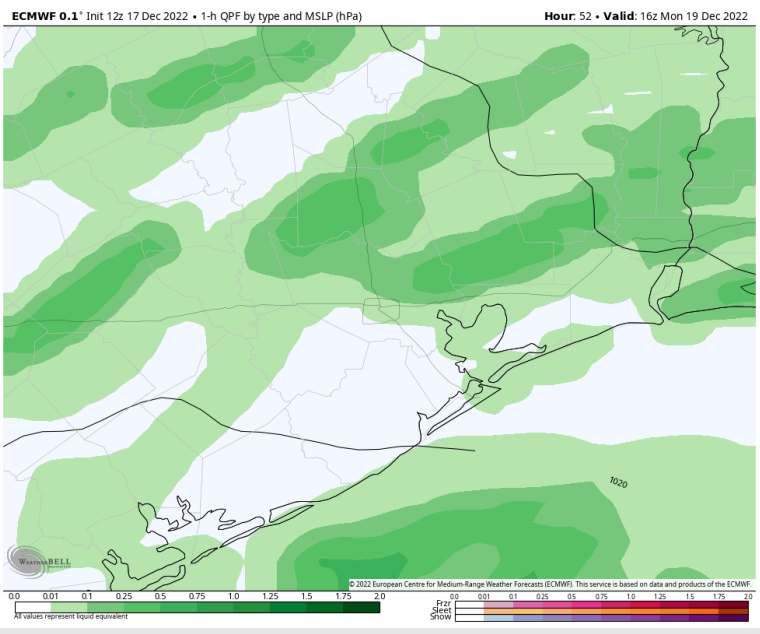
Precip: Favoring dry conditions until about 4 AM, where spotty showers will begin to enter the region. As the day progresses, shower chances will increase, with the greatest chance of seeing rain between 7 AM – 5 PM. After 5 PM, showers will taper off, yielding dry conditions for the rest of the overnight.

Wind: Sustained winds will vary between ESE and ENE for the majority of the day. Towards 6 – 7 PM, winds will shift more from the NE. By 5 AM, winds N of Morgan’s Point will be 11 – 15 kts, and S of Morgan’s Point will be 18 – 24 kts. Towards the midnight hour winds will begin to subside to 7 – 10 kts N of Morgan’s Point and 14 – 18 kts S of Morgan’s Point. **Wind gusts can be as high as 28 – 33 kts south of station 37/38 from 7 AM – 2 PM. Otherwise, all stations can expect to see gusts of up to 25 kts during this timeframe.**

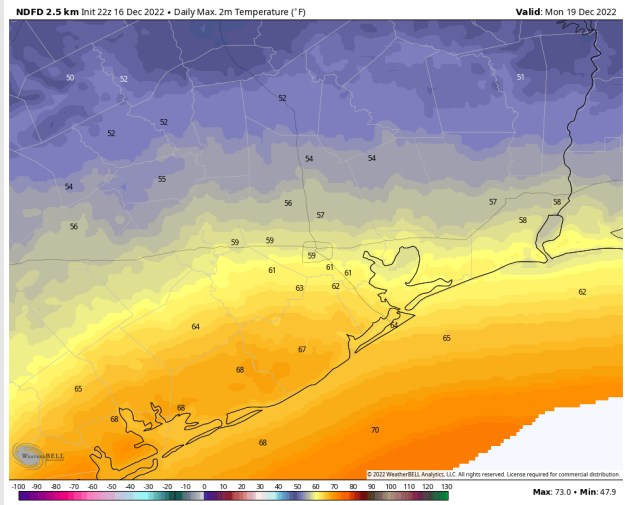
Temps: High temps Saturday will be in near 60 F north of station 63/64 and low to mid 60s F south of 63/64.

Visibility: Not anticipating any visibility concerns at this time.

Precip Forecast: 10 AM CT

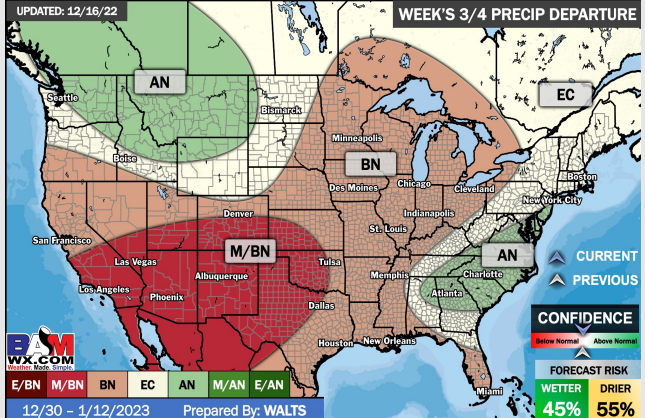
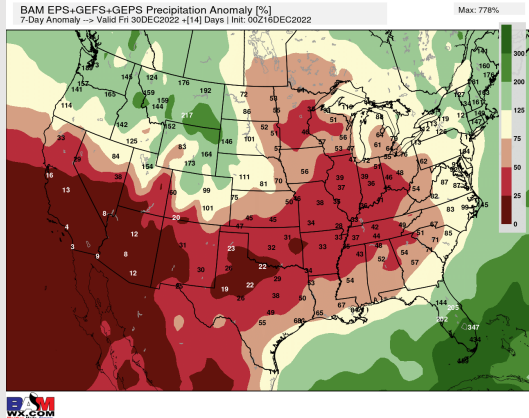
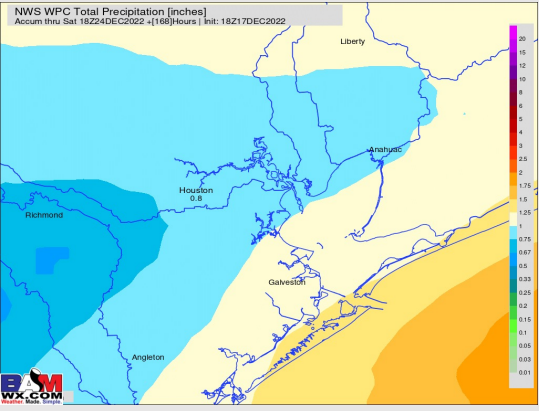
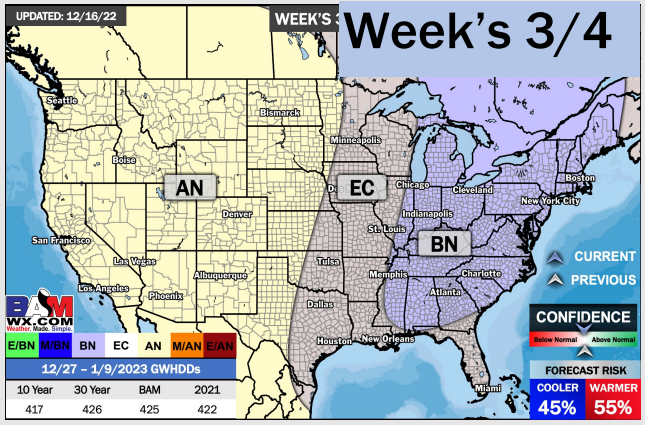
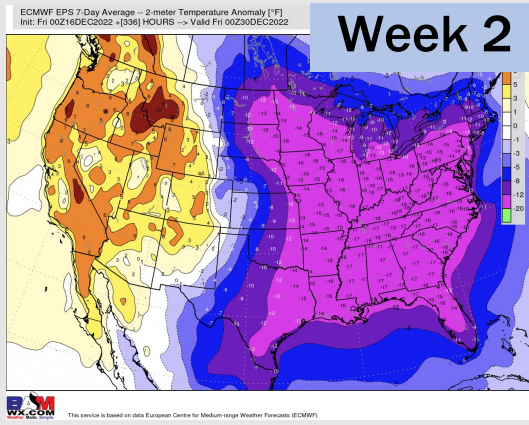
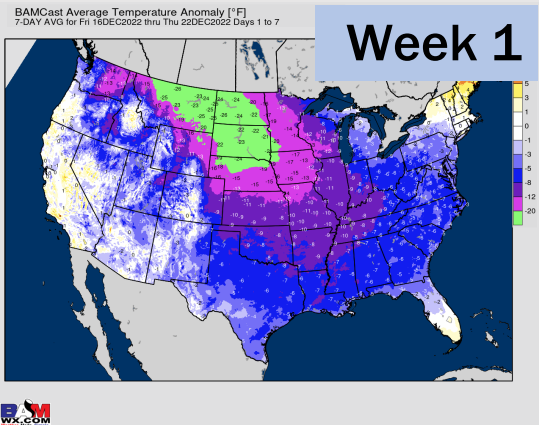


Wind Speed
10 AM CT



High Temps
Monday

Houston Pilots: 12/17/22



- Better rain chances arrive next Mon/Tue. Temps will be falling below average.
- Week 2 is expected to be much below normal for temperatures and near to below normal rain chances for late December.
- The weeks 3/4 timeframe looks to feature normal temperatures and below normal chances for precipitation.