

Houston Pilots Forecast Package



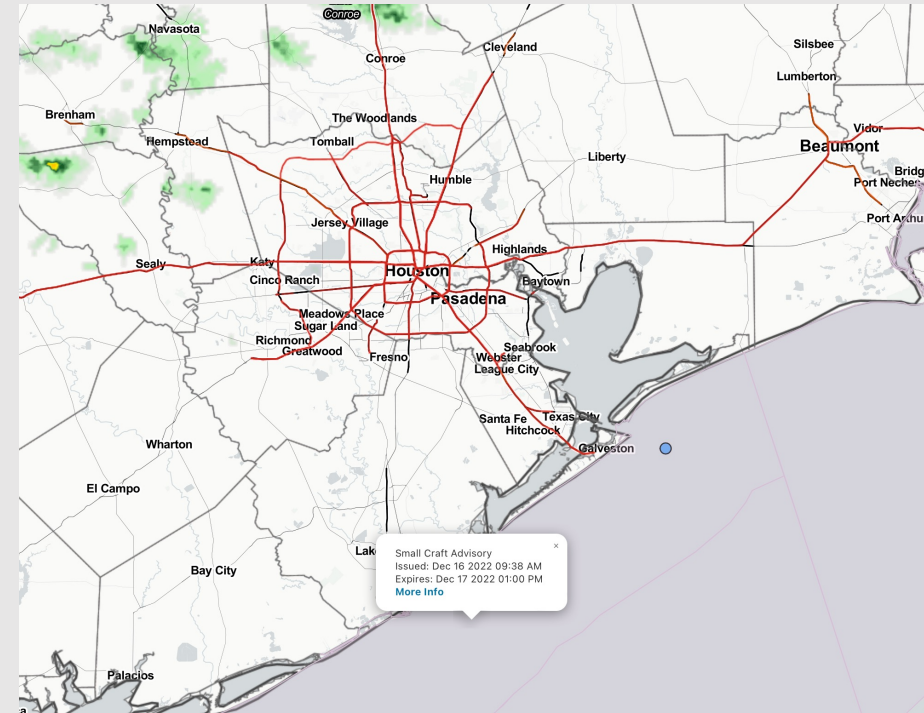
Updated: 1:30 PM CT

Friday, December 16, 2022

Forecaster: Alyssa McClung

Weather Headlines

- Anticipating a couple shots of scattered showers this evening and into Saturday morning.
- Winds will become more elevated into this evening and into Saturday as front passed through.
- **The pattern ahead looks rather unfavorable for fog.** We will watch trends closely, but a primarily Northerly wind should really limit fog chances over the next 7-10 days.



Radar/NWS Alerts: 1:30 PM CT



As always, please do not hesitate to reach out to us with any forecast questions via the chat option on the Weather Porthole or our on-call number, **(317)-560-8122** press 1 for forecast questions.

Houston Pilots Extended Range Visibility Report



Monday 12/19/22

Rain will be in the forecast so reduced visibility via rain will be possible, but fog is not favored.



Tuesday 12/20/22

No Fog expected for Tuesday.



Wednesday 12/21/22

No Fog expected for Wednesday.



Chance for Reduced Visibility

Monday AM	Unlikely
Monday PM	Unlikely
Tuesday AM	Unlikely
Tuesday PM	Unlikely
Wednesday AM	Unlikely
Wednesday PM	Unlikely

Houston Pilots Wind Report



Example

Sustained wind 13 Knots
 Gusts 18 Knots
 Wind from the N

WS: 13
 G:18
 N

Time Knots	Fri 11am	Fri 12pm	Fri 1pm	Fri 2pm	Fri 3pm	Fri 4pm	Fri 5pm	Fri 6pm	Fri 7pm	Fri 8pm	Fri 9pm	Fri 10pm	Fri 11pm	Sat 12am	Sat 1am	Sat 2am	Sat 3am	Sat 4am	Sat 5am	Sat 6am	Sat 7am	Sat 8am	Sat 9am	Sat 10am	Sat 11am	Sat 12pm	Sat 1pm	Sat 2pm	Sat 3pm	Sat 4pm	Sat 5pm	Sat 6pm	Sat 7pm	Sat 8pm	Sat 9pm	Sat 10pm
610 Bridge	7	7	6	5	4	7	9	11	10	11	11	12	9	10	9	9	9	9	9	9	8	8	8	8	9	8	7	7	8	9	8	6	5	5	5	5
	11	11	11	10	9	9	14	20	20	21	21	22	22	20	23	16	16	16	17	15	14	14	14	14	15	14	13	13	12	12	12	9	8	7	6	7
	E	E	ESE	SE	SE	ENE	NNE	NNE	NNE	NNE	NNE	NNE	NNE	NNE	NNE	N	NNE	N	NNE	N	NNE	NNE	NNE	NNE	NNE	N	N	N	N	NNE	NNE	NNE	NE	NNE	NNE	
Kinder 1	7	7	6	5	5	7	9	11	10	11	11	12	10	10	9	9	9	8	9	9	7	7	8	8	8	7	7	7	7	7	6	5	4	4	4	
	11	11	11	10	9	9	14	20	21	21	21	23	22	20	23	16	16	15	16	15	14	14	14	14	14	14	13	13	12	12	12	9	8	7	6	6
	E	E	ESE	SE	SE	E	NNE	NNE	NNE	N	NNE	NNE	NNE	NNE	NNE	N	N	N	N	N	NNE	NNE	NNE	NNE	NNE	N	N	N	N	NNE	NNE	NE	NE	NNE	NNE	
Greens Bayou	7	7	6	6	6	5	9	12	11	10	11	12	11	10	8	9	9	9	9	9	7	7	8	8	8	8	7	7	8	7	6	5	4	4	4	
	11	12	12	10	10	11	14	21	22	21	21	22	22	20	23	15	16	15	16	15	14	14	14	14	14	14	13	13	12	12	11	8	8	6	6	6
	ENE	E	ESE	SE	SE	SE	ENE	NNE	NNE	N	NNE	NNE	NNE	NNE	NNE	N	N	N	N	N	NNE	NNE	NNE	NNE	NNE	N	N	N	N	NNE	NNE	NNE	NNE	NNE	NNE	
Shell Crude	7	6	7	7	7	7	8	12	11	12	11	12	11	10	9	9	9	9	9	9	8	8	8	8	9	9	9	8	8	8	7	6	5	5	5	
	11	12	12	11	10	14	13	21	22	23	21	23	23	20	23	16	16	16	16	15	14	14	14	14	14	14	13	13	12	12	11	9	8	7	6	7
	ENE	E	ESE	SE	SE	SE	E	NNE	NNE	N	NNE	NNE	NNE	NNE	NNE	NNE	NNE	NNE	NNE	NNE	NNE	NNE	NNE	NNE	NNE	N	N	N	N	NNE	NNE	NNE	NNE	NNE	NNE	
Lynchburg Ferries	7	6	7	7	7	7	8	12	11	12	11	13	11	10	9	10	11	10	10	10	9	9	9	9	9	9	8	8	8	7	7	6	6	6		
	12	12	13	11	12	15	13	22	22	23	21	22	22	20	22	17	17	17	16	16	15	14	14	14	14	13	12	13	12	11	9	9	8	7	7	
	ENE	E	E	ESE	SE	SE	NE	NNE	NNE	N	NNE	NNE	NNE	NNE	NNE	NNE	NNE	NNE	NNE	NNE	NNE	NNE	NNE	NNE	NNE	N	N	ESE	N	N	NNE	NNE	NNE	NNE	NNE	
Exxon 3	8	6	7	7	7	7	8	12	12	14	12	14	14	10	10	11	12	11	12	11	11	10	10	10	9	10	8	8	8	8	8	8	7	7	7	
	12	12	13	13	14	16	13	22	22	24	22	22	23	18	22	18	18	18	18	17	16	16	15	15	15	14	12	13	12	11	11	10	9	9	9	
	ENE	ENE	E	SE	SE	SE	E	N	NNE	NNE	NNE	NNE	NNE	NNE	NNE	NNE	NNE	NNE	NNE	NNE	NNE	NNE	NNE	NNE	NNE	N	N	N	N	NNE	NNE	NNE	NNE	NNE	NNE	
Morgans Point	12	11	10	8	8	10	8	17	20	21	19	19	20	15	15	13	13	13	13	12	12	12	11	11	10	11	9	8	8	8	8	8	8	8		
	13	13	14	15	15	17	13	20	21	26	22	23	24	20	22	20	20	20	20	19	18	18	17	17	17	16	15	13	13	12	12	11	11	11	11	
	ENE	ENE	E	SE	SE	SE	ESE	N	NNE	NNE	NNE	N	NNE	NNE	NNE	NNE	NNE	NNE	NNE	NNE	NNE	NNE	NNE	NNE	NNE	N	N	N	N	N	NNE	NNE	NNE	NNE	NNE	
75/76	13	12	10	9	10	12	8	20	21	22	21	22	23	19	17	15	15	15	15	14	13	13	13	12	12	11	10	10	10	9	9	10	9	10	10	
	14	14	14	15	16	18	13	22	22	26	23	24	24	22	21	20	21	21	20	20	19	18	18	18	17	17	16	14	14	13	13	14	13	13	13	
	ENE	ENE	ENE	ESE	SE	SE	ESE	N	NNE	NNE	NNE	NNE	NNE	NNE	NNE	NNE	NNE	NNE	NNE	NNE	NNE	NNE	NNE	NNE	NNE	N	N	NW	N	N	N	N	NNE	NNE	NNE	
63/64	13	12	10	10	11	12	8	20	21	22	22	22	23	21	19	16	16	16	16	15	15	14	14	13	13	12	11	10	10	10	10	10	10	10	10	
	15	14	14	15	16	18	13	22	23	25	24	24	25	24	21	21	21	21	21	21	20	19	19	18	18	18	17	15	15	14	14	14	14	13	14	
	NE	ENE	ESE	SE	SE	SE	ESE	N	NNE	NNE	NNE	NNE	NNE	NNE	NNE	NNE	NNE	NNE	NNE	NNE	NNE	NNE	NNE	NNE	NNE	N	N	N	N	N	NNE	NNE	NNE	NNE	NNE	
51/52	13	12	10	10	11	12	9	10	23	21	22	22	23	22	19	17	17	17	16	16	16	16	15	14	14	14	13	12	11	11	11	11	11	11	11	
	14	13	15	15	16	17	15	10	24	23	24	24	25	24	21	21	21	21	21	21	20	20	20	19	19	18	17	16	16	15	15	14	14	14	14	
	ENE	E	ESE	SE	SE	SE	SE	NE	NNE	NNE	NNE	NNE	NNE	NNE	NNE	NNE	NNE	NNE	NNE	NNE	NNE	NNE	NNE	NNE	NNE	NNE	N	N	N	N	N	NNE	NNE	NNE	NNE	NNE
37/38	11	9	9	10	10	10	9	8	23	20	22	22	22	19	17	17	17	17	17	17	17	16	15	15	14	14	13	12	12	12	11	12	12	12		
	13	10	13	15	15	15	17	11	24	22	24	24	24	24	22	21	21	22	22	21	21	21	20	19	18	18	17	16	16	15	15	15	15	15		
	ESE	SE	SE	SSE	SE	SE	SE	E	NNE	NNE	NNE	NNE	NNE	NNE	NNE	NNE	NNE	NNE	NNE	NNE	NNE	NNE	NNE	NNE	NNE	NNE	N	N	N	N	NNE	NNE	NNE	NNE	NNE	
25/26	8	6	9	10	10	14	11	7	22	19	22	22	21	22	20	17	17	17	17	17	17	16	16	15	15	14	13	13	12	12	12	12	12	12		
	10	8	11	14	14	17	13	23	20	24	25	24	24	24	24	21	22	22	22	22	22	21	21	21	20	19	18	17	16	16	16	16	16	16		
	SSE	N	SSE	SSE	SE	SE	SSE	SSE	N	NNE	NNE	NNE	NNE	NNE	NNE	NNE	NNE	NNE	NNE	NNE	NNE	NNE	NNE	NNE	NNE	NNE	N	N	N	N	NNE	NNE	NNE	NNE	NNE	
11/12	8	8	11	12	11	11	14	11	21	20	21	23	23	23	18	18	18	18	18	18	18	18	17	17	16	15	15	14	14	13	13	13	13	13		
	10	12	14	15	14	14	17	15	22	20	23	24	25	24	27	22	22	23	23	23	22	22	21	21	20	19	18	17	17	16	16	16	16	16		
	SSE	SSE	SSE	SE	SE	SE	SSE	SSE	N	NNE	NNE	NNE	NNE	NNE	NNE	NNE	NNE	NNE	NNE	NNE	NNE	NNE	NNE	NNE	NNE	NNE	NNE	N	N	N	NNE	NNE	NNE	NNE	NNE	
1 & 2 Bravo	14	14	14	13	13	13	15	14	12	20	21	23	24	23	24	19	19	19	19	19	19	19	19	18	17	17	16	15	14	14	14	14	14	14		
	15	15	15	14	14	14	17	17	14	21	22	25	25	25	27	22	22	23	23	23	22	22	22	21	21	20	19	18	17	17	17	17	17	17		
	SSE	SSE	SE	SE	SE	SE	SE	SSE	SSE	N	NNE	NNE	NNE	NNE	NNE	NNE	NNE	NNE	NNE	NNE	NNE	NNE	NNE	NNE	NNE	NNE	NNE	N	N	N	NNE	NNE	NNE	NNE	NNE	

Houston Pilots: Fri. 12/16/2022



Forecast Discussion

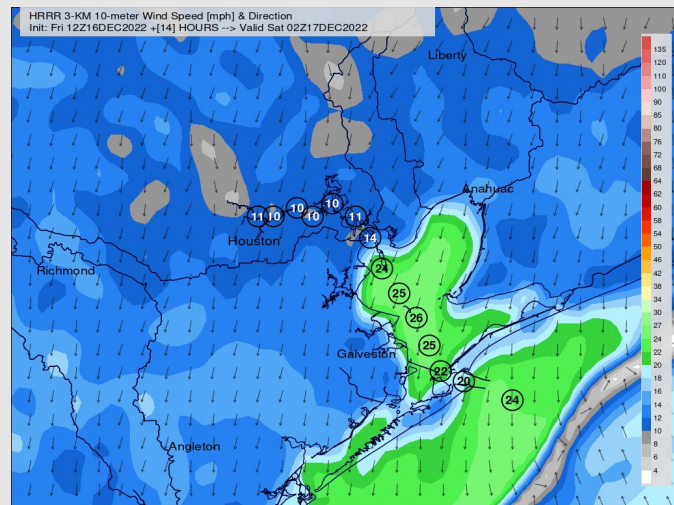
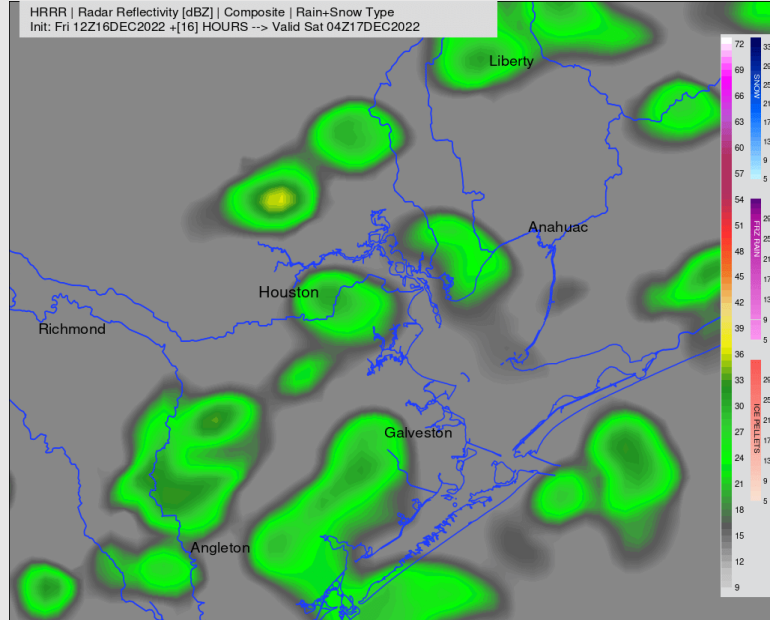
Precip: Anticipating dry conditions until 4 PM. After 4 PM, anticipating a 40% chance for rain showers that will continue into Saturday.

Wind: Sustained winds out of the SE at 7 – 12 kts. After 7 PM, the front will have passed over GALV Bay, bringing sustained winds out of the north at 10 – 15 kts with gusts of 30 - 32 kts for all stations.

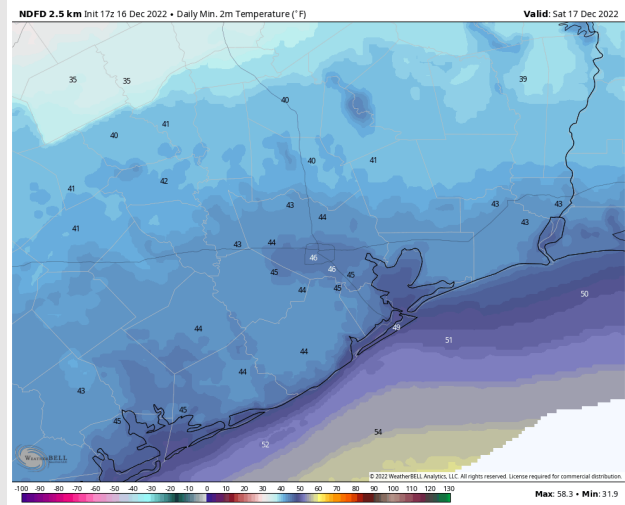
Temps: Low temps Saturday morning in the low 50s F at the Boarding Station with temps in the mid 40s F for all other stations.

Visibility: Not anticipating any visibility concerns at this time.

Precip Forecast: 10 PM CT



Wind Speed
8 PM CT



Low Temps
Saturday AM

Houston Pilots: sat. 12/17/2022



Forecast Discussion

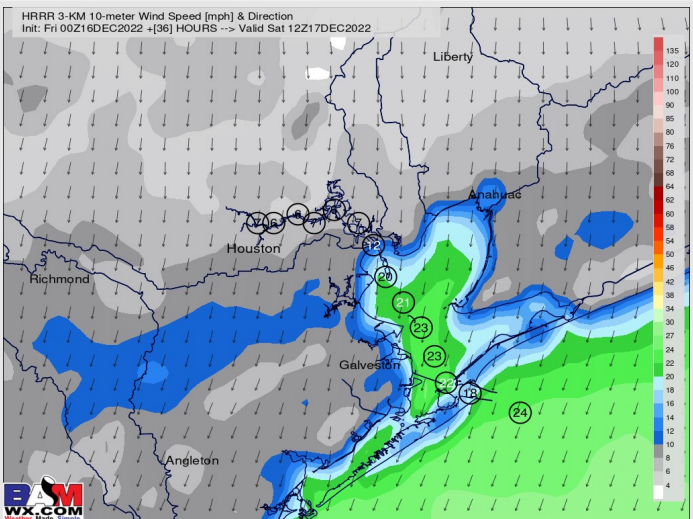
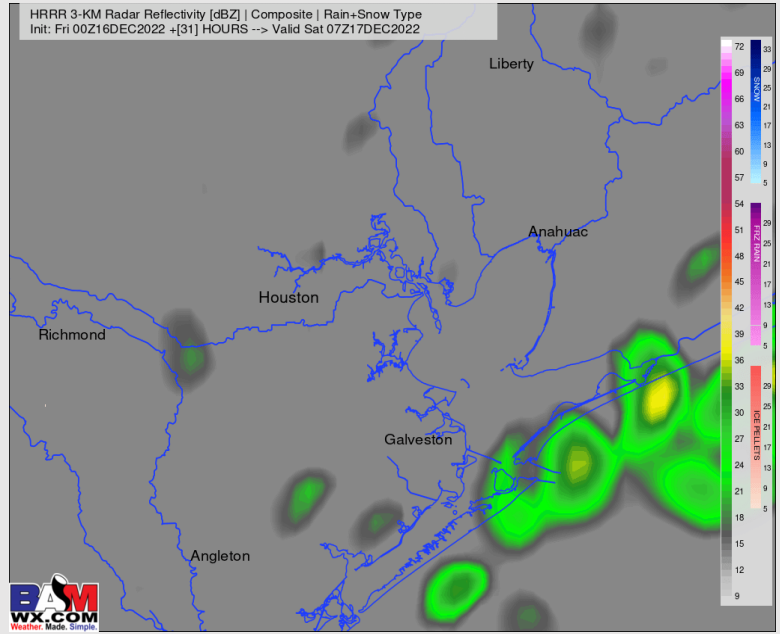
Precip: Eyeing 40% chances of lighter sporadic rain showers from 12 – 2 AM. After 2 AM, chances for rain decrease to around 10-20% until 3 PM. After 3 PM, favoring dry conditions the rest of the day.

Wind: Saturday will be a gusty day. Expecting winds from Midnight through 3 PM to be out of the N at 20-25 knots at the boarding station with gusts 25-30+ knots. After 3 PM and through the evening hours, winds will be 15-20 knots and gusts 20-25 kts possible.

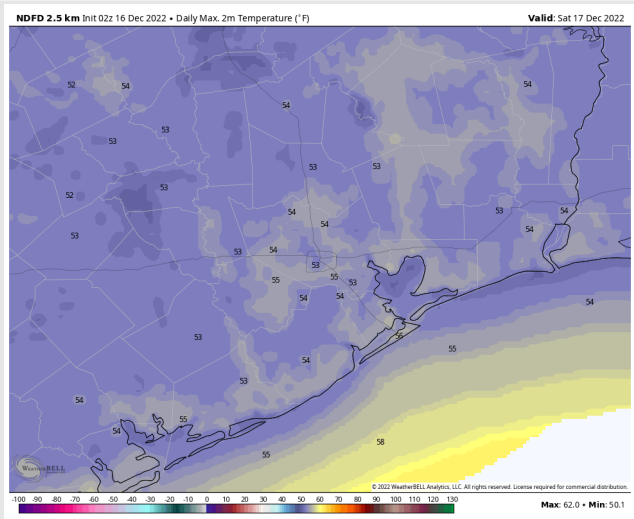
Temps: Highs will sit in the mid to low 50s F for all stations.

Visibility: Not anticipating any visibility concerns.

Precip Forecast: 1 AM CT



Wind Speed
6 AM CT



High Temps
Saturday

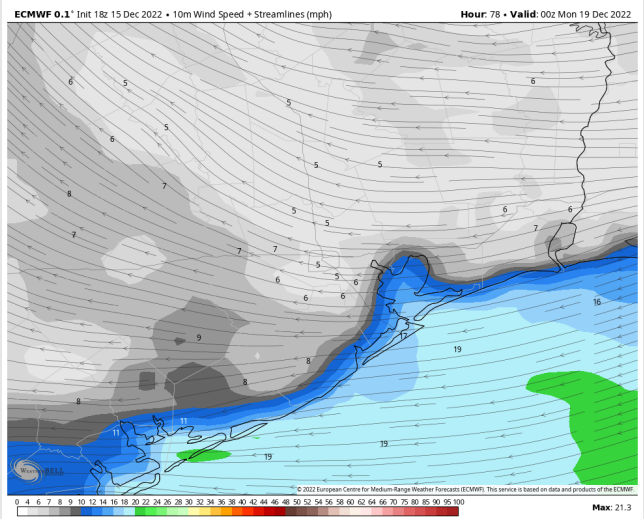
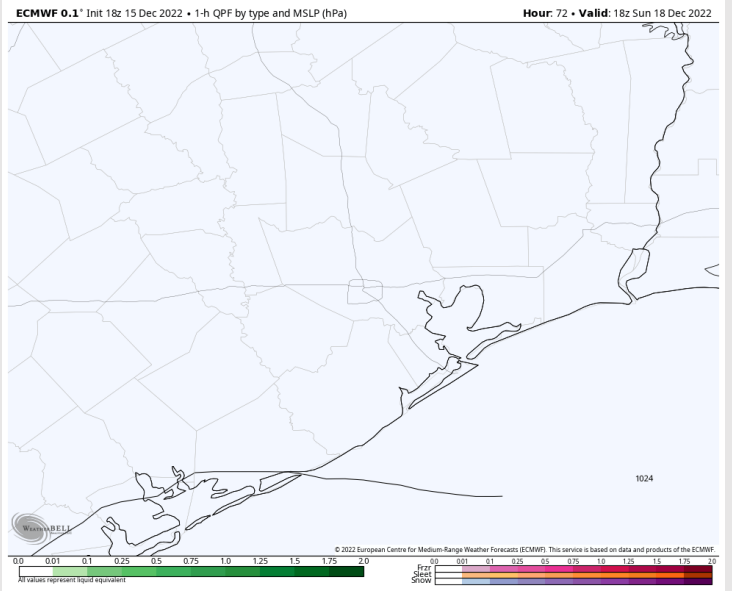
Houston Pilots: Sun. 12/18/2022



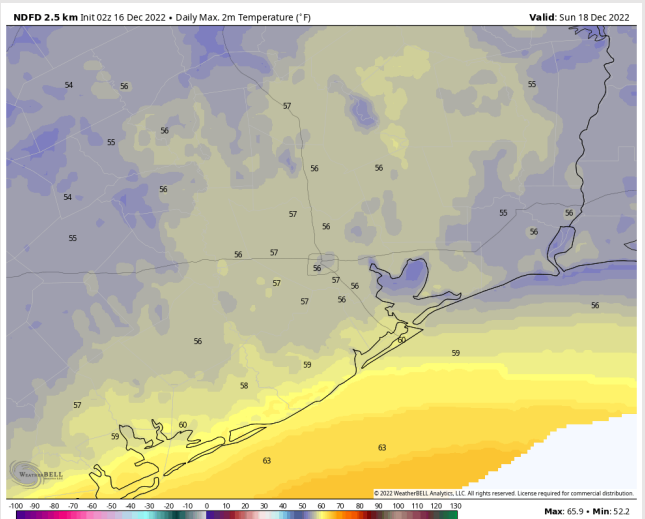
Forecast Discussion

- Precip:** Anticipating dry conditions Sunday.
- Wind:** Sustained winds out of the ENE throughout the day Sunday. Winds early Sunday morning at 18-23 kts S of Morgan's Point and 8-16 kts N of Morgan's Point. After 1 PM CT, winds decrease to 9-15 kts at all stations for the rest of the day.
- Temps:** High temps Sunday will be in the mid 50s F for all stations.
- Visibility:** Not anticipating any visibility concerns at this time.

Precip Forecast: 12 PM CT

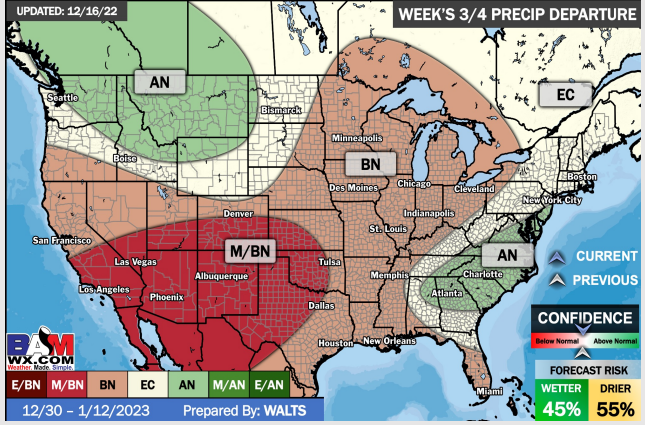
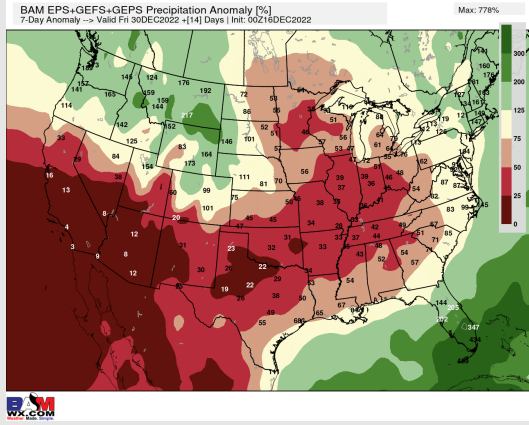
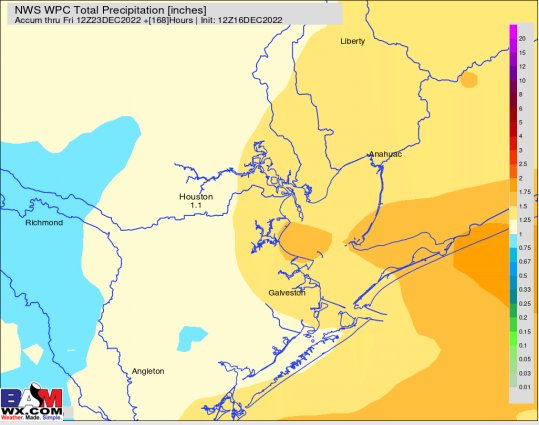
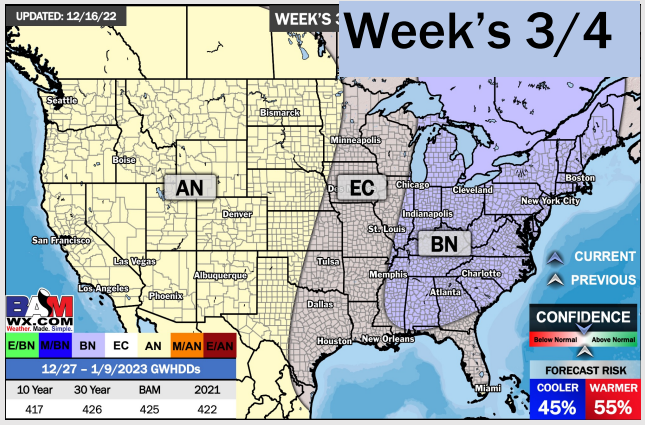
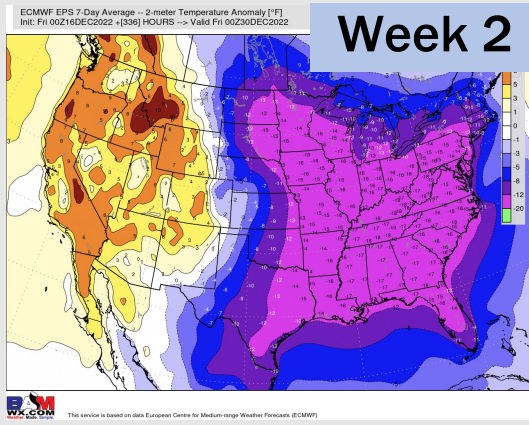
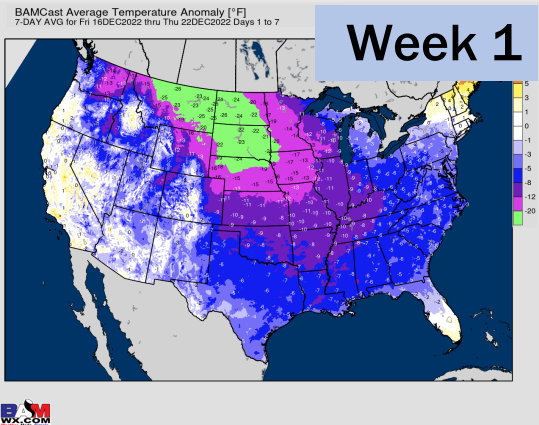


Wind Speed
6 PM CT



Low Temps
Sunday

Houston Pilots: 12/16/22



- Scattered showers will be possible tonight into Saturday. Better rain chances arrive next Mon/Tue. Temps will be falling below average.
- Week 2 is expected to be much below normal for temperatures and near to below normal rain chances for late December.
- The weeks ³/₄ timeframe looks to feature normal temperatures and below normal chances for precipitation.