

# Houston Pilots Forecast Package



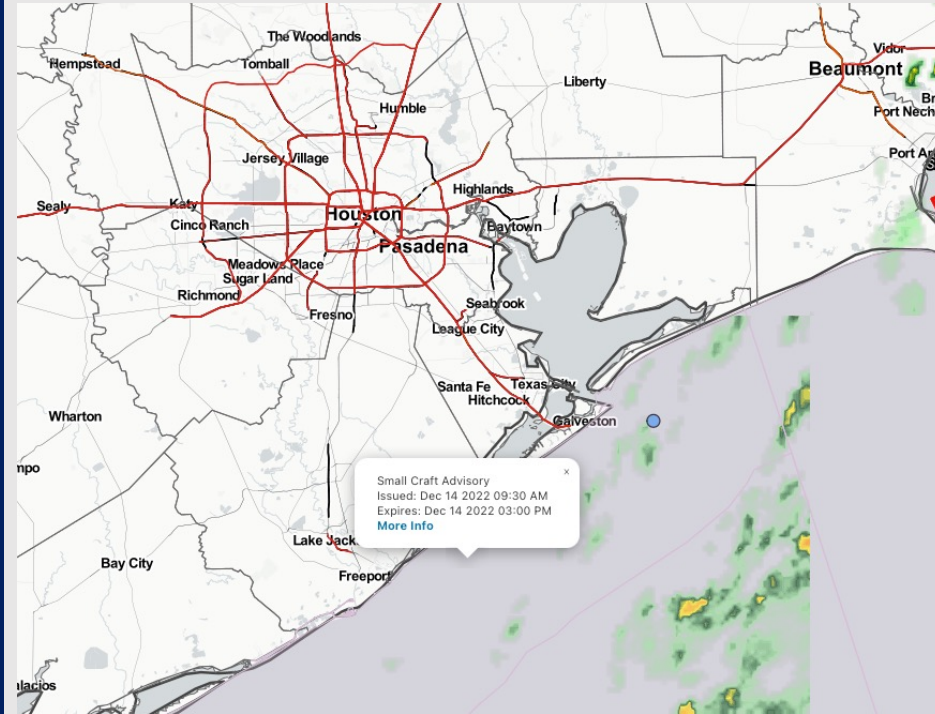
Updated: 1:00 PM CT

Wednesday, December 14, 2022

Forecaster: Vince Bryan

## Weather Headlines

- Precip is all but worked out of the area, expecting drier conditions working forward.
- **Winds will gradually calm down through the afternoon and evening hours.** Thursday and Friday will feature calmer winds in the 0 – 15-kt range. Winds look to be elevated Saturday – Monday.
- **The pattern ahead looks rather unfavorable for fog. We will watch trends closely, but a primarily Northerly wind should really limit fog chances over the next 7-10 days.**



**Radar/NWS Alerts: 1:00 PM CT**



As always, please do not hesitate to reach out to us with any forecast questions via the chat option on the Weather Porthole or our on-call number, **(317)-560-8122** press 1 for forecast questions.

# Houston Pilots Extended Range Visibility Report



## Saturday 12/17/22

Strong winds from the NE possibly in the low 10– 15 kt range. No fog expected.



## Monday 12/19/22

Rain will be in the forecast so reduced visibility via rain will be possible, but fog is not favored.



## Sunday 12/18/22

No Fog expected for Sunday.



## Chance for Reduced Visibility

Saturday AM	Unlikely
Saturday PM	Unlikely
Sunday AM	Unlikely
Sunday PM	Unlikely
Monday AM	Unlikely
Monday PM	Unlikely



# Houston Pilots Wind Report



## Confidence



## Example

Sustained wind 13 Knots  
Gusts 18 Knots  
Wind from the N

WS: 13  
G:18  
N

Time Knots	Wed 11am	Wed 12pm	Wed 1pm	Wed 2pm	Wed 3pm	Wed 4pm	Wed 5pm	Wed 6pm	Wed 7pm	Wed 8pm	Wed 9pm	Wed 10pm	Wed 11pm	Thu 12am	Thu 1am	Thu 2am	Thu 3am	Thu 4am	Thu 5am	Thu 6am	Thu 7am	Thu 8am	Thu 9am	Thu 10am	Thu 11am	Thu 12pm	Thu 1pm	Thu 2pm	Thu 3pm	Thu 4pm	Thu 5pm	Thu 6pm	Thu 7pm	Thu 8pm	Thu 9pm	Thu 10pm
610 Bridge	12 28 N	7 19 N	7 15 N	6 13 N	5 15 NNW	6 14 NW	5 14 NW	3 10 NW	4 14 NW	4 14 NW	5 14 NNW	4 12 N	4 12 N	5 11 N	4 11 N	4 11 N	4 11 N	3 6 NNE	3 5 NE	3 4 NE	2 3 ENE	2 3 ENE	3 4 ESE	3 4 ESE	3 4 E	2 4 SSE	3 4 WSW	2 4 WSW	3 6 WSW	2 5 W	3 5 NNW	4 5 ESE	4 4 ESE	4 4 ESE	3 3 SE	3 4 ESE
Kinder 1	12 29 N	7 20 N	7 14 N	6 13 N	5 15 NNW	6 14 NW	4 14 NW	3 10 NW	4 14 NW	4 14 NW	5 14 NNW	4 12 NNW	4 12 N	5 11 N	4 11 N	3 11 N	3 11 N	3 6 NNE	3 5 NE	3 4 NE	2 3 ENE	2 3 ENE	3 4 ESE	3 4 ESE	3 4 E	2 3 SE	3 4 SW	3 6 SW	2 5 WSW	3 5 SW	4 5 NW	5 5 ESE	4 4 ESE	3 4 ESE	3 3 SE	3 4 ESE
Greens Bayou	14 30 N	9 22 N	7 15 N	6 11 N	5 14 NNW	6 13 NW	4 12 NW	3 10 WNW	4 9 NW	4 15 NW	5 15 NW	4 13 NNW	4 12 NNW	5 12 N	4 11 N	3 11 N	3 6 N	3 5 NNE	3 4 NE	3 4 NE	2 3 ENE	2 3 ENE	3 4 ESE	3 4 ESE	3 4 E	2 3 SSE	3 4 S	3 5 SW	4 6 SW	5 6 SSW	5 5 SE	5 5 ESE	4 4 ESE	3 3 ESE	3 3 ESE	3 3 ESE
Shell Crude	15 30 NNW	9 22 N	8 15 N	6 11 N	6 14 NNW	5 13 NW	4 11 WNW	3 10 NW	4 9 NW	4 14 NW	5 14 NNW	5 13 NNW	3 11 N	5 12 N	4 11 N	4 11 N	4 6 N	4 5 NNE	5 5 NE	5 4 NE	4 4 ENE	4 3 ENE	3 4 ESE	3 4 ESE	3 4 E	2 3 SSE	3 4 S	3 5 SW	4 6 SW	5 6 SSW	5 5 SE	5 5 ESE	5 4 ESE	5 4 ESE	4 3 SE	4 4 SE
Lynchburg Ferries	15 30 NNW	9 22 N	8 16 N	6 12 N	6 13 NNW	5 11 NW	4 9 WNW	3 8 WNW	4 9 WNW	4 13 NW	5 14 NNW	5 13 NNW	3 11 N	4 12 N	3 11 N	3 11 N	3 7 N	4 6 NNE	5 5 NE	5 5 NE	4 4 ENE	4 4 ENE	3 4 ESE	3 4 ESE	3 4 E	2 3 SSE	3 4 S	3 5 SW	4 6 SW	5 6 SSW	5 5 SE	5 5 ESE	5 6 ESE	5 5 ESE	4 5 SE	5 5 SE
Exxon 3	15 30 NNW	11 23 N	9 18 N	6 13 N	5 11 NNW	4 14 NW	3 11 WNW	4 8 WNW	4 9 WNW	5 12 NW	8 15 NNW	9 17 NNW	8 14 N	8 14 N	7 14 N	6 14 N	6 8 SSE	5 7 NNE	5 6 NNE	5 6 NE	4 5 ENE	4 5 ENE	4 5 ESE	4 4 ESE	4 4 E	3 4 SSE	4 5 SSW	5 6 SW	6 6 SSW	6 5 SE	6 5 SE	6 5 SE	5 5 SE	5 5 SE	5 5 SE	5 5 SE
Morgans Point	20 30 NNW	17 24 N	14 20 NNE	9 13 N	8 12 NNW	7 15 NW	6 10 NW	7 9 NW	8 10 NW	11 12 NW	14 21 NNW	16 22 NNW	14 20 N	13 19 N	14 19 N	8 11 SSE	7 9 NNE	7 8 NNE	6 7 NE	5 7 NE	5 6 ENE	4 6 ENE	3 5 ESE	3 4 ESE	3 4 E	2 3 SSE	3 4 S	3 5 SW	4 6 SW	5 6 SSW	5 5 SE	5 5 SE	5 5 SE	5 5 SE	4 4 SE	4 4 SE
75/76	20 30 NNW	21 26 N	14 21 NNE	10 15 N	8 13 NNW	8 15 NW	6 10 NW	7 9 NW	8 10 NW	11 12 NW	14 21 NNW	16 22 NNW	15 20 N	14 19 N	14 19 N	9 12 NNE	8 10 NNE	8 9 NNE	7 7 NE	6 6 NE	6 5 ENE	5 4 ENE	4 4 ESE	4 3 ESE	3 3 E	2 3 SSE	3 4 S	3 4 SW	4 5 SW	5 5 SSW	5 5 SE	5 5 SE	5 5 SE	4 4 SE	4 4 SE	4 4 SE
63/64	21 31 NNW	21 29 N	16 21 NNE	12 17 N	9 13 NNW	8 15 NW	8 12 NW	8 10 NW	8 9 NW	11 12 NW	14 20 NNW	16 22 NNW	15 19 N	14 19 N	14 19 N	10 13 NNE	9 12 NNE	9 11 NNE	8 8 NE	7 8 NE	7 6 ENE	6 6 ENE	5 4 ESE	4 3 ESE	3 3 E	2 3 SSE	3 4 S	3 4 SW	4 5 SW	5 5 SSW	5 5 SE	5 5 SE	4 4 SE	4 4 SE	4 4 SE	4 4 SE
51/52	25 32 NNW	24 30 N	16 21 NNE	14 18 N	10 14 NNW	9 14 NW	8 12 NW	7 9 NW	7 10 NW	10 11 NW	14 20 NNW	17 21 NNW	15 19 N	15 17 N	10 13 NNE	10 12 NNE	9 11 NNE	8 10 NE	7 9 NE	7 8 NE	7 6 ENE	6 6 ENE	5 4 ESE	4 3 ESE	3 3 E	2 3 SSE	3 4 S	3 4 SW	4 5 SW	5 5 SSW	5 5 SE	5 5 SE	4 4 SE	4 4 SE	4 4 SE	4 4 SE
37/38	25 32 NNW	26 31 N	16 21 NNE	14 18 N	11 14 NNW	10 14 NW	8 12 NW	6 9 NW	7 11 NW	9 13 NW	14 20 NNW	17 21 NNW	14 19 N	13 17 N	10 13 NNE	10 12 NNE	9 11 NNE	8 10 NE	7 8 NE	7 7 ENE	6 6 ENE	5 4 ESE	4 3 ESE	3 3 E	2 3 SSE	3 4 S	3 4 SW	4 5 SW	5 5 SSW	5 5 SE	5 5 SE	4 4 SE	4 4 SE	4 4 SE	4 4 SE	
25/26	25 32 N	26 31 NNW	16 20 N	14 18 NNW	11 15 NNW	10 14 NW	8 12 NW	6 11 NW	7 11 NW	9 13 NW	14 19 NNW	17 20 NNW	14 17 N	13 17 N	10 13 NNE	11 12 NNE	10 10 NNE	9 10 NE	8 9 NE	7 8 NE	6 7 ENE	6 7 ENE	5 5 ESE	4 4 ESE	3 3 E	2 3 SSE	3 4 S	3 4 SW	4 5 SW	5 5 SSW	5 5 SE	5 5 SE	4 4 SE	4 4 SE	4 4 SE	4 4 SE
11/12	24 31 N	27 33 NNW	16 21 N	14 18 NNW	11 15 NNW	12 16 NW	9 12 NW	7 12 NW	7 12 NW	9 14 NW	14 19 NNW	17 20 NNW	14 17 N	12 15 N	10 13 NNE	11 12 NNE	11 11 NNE	10 10 NE	9 9 NE	8 8 NE	7 7 ENE	6 6 ENE	5 5 ESE	4 4 ESE	3 3 E	2 3 SSE	3 4 S	3 4 SW	4 5 SW	5 5 SSW	5 5 SE	5 5 SE	4 4 SE	4 4 SE	4 4 SE	4 4 SE
1 & 2 Bravo	27 34 N	27 33 NNW	21 28 N	17 20 N	13 16 NNW	11 16 NW	9 16 NW	9 15 NW	9 15 NW	9 16 NW	13 18 NNW	16 20 NNW	15 18 N	15 18 N	13 14 NNE	12 13 NNE	12 11 NNE	12 11 NE	10 10 NE	10 9 NE	9 8 NE	8 7 ENE	7 6 ENE	6 5 ESE	5 4 ESE	4 3 E	3 4 S	3 4 SW	4 5 SW	5 5 SSW	5 5 SE	5 5 SE	4 4 SE	4 4 SE	4 4 SE	4 4 SE

# Houston Pilots: Weds. 12/14/2022



## Forecast Discussion

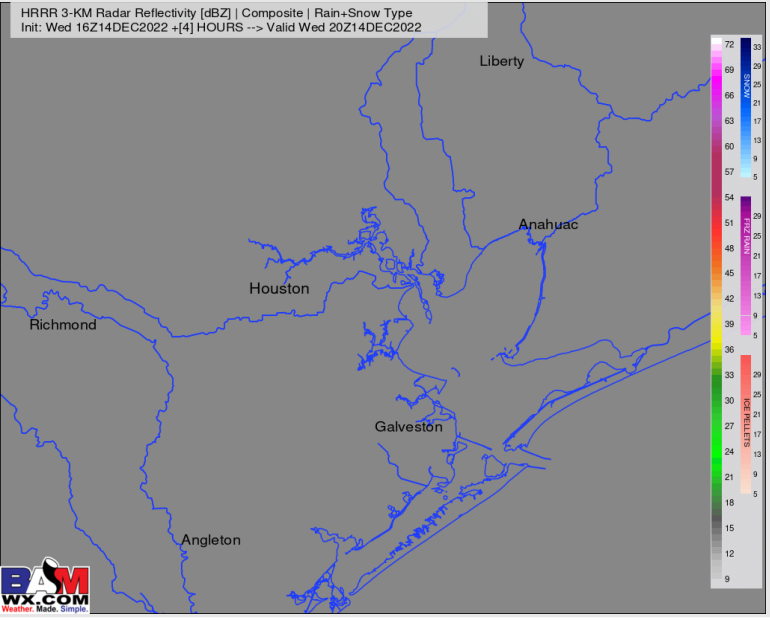
**Precip:** As the backside of precip moves out over the next few hours, dry conditions are favored the rest of the day.

**Wind:** Gusty winds will slowly subside over the new few hours. Winds continue from the NW through 11 PM where they will turn more N/NNE. Sustained winds at the boarding station are 20-25 knots by 3 PM (gusts 25-30 kts), then dropping to 13-18 knots by 6 PM. Expecting a general 5-10 kt (gusts to 11-14 kts) wind through the evening and overnight hours.

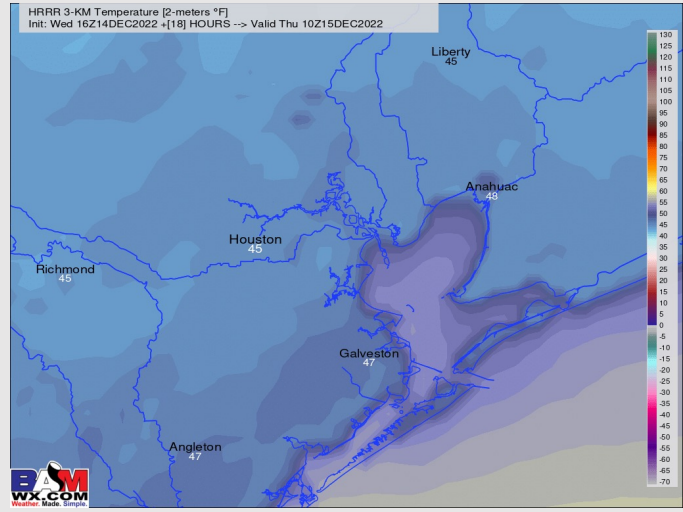
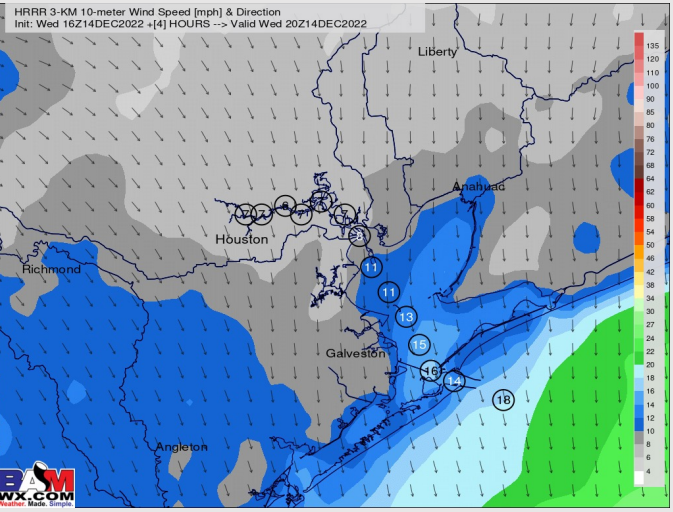
**Temps:** Lows fall back into the upper 40s / lower 50s for most stations.

**Visibility:** Not anticipating any visibility concerns.

## Precip Forecast: 4 PM CT



Wind Speed  
4 PM CT

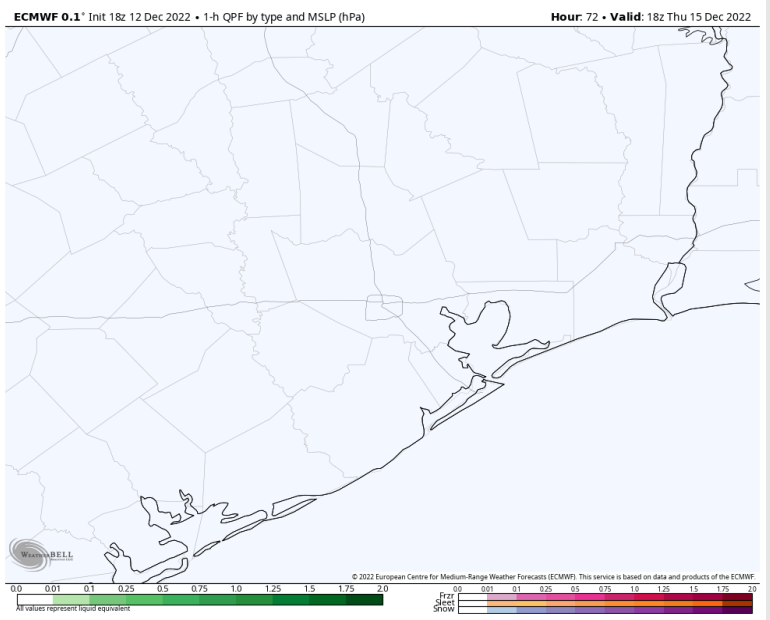


Low Temps  
Thursday AM

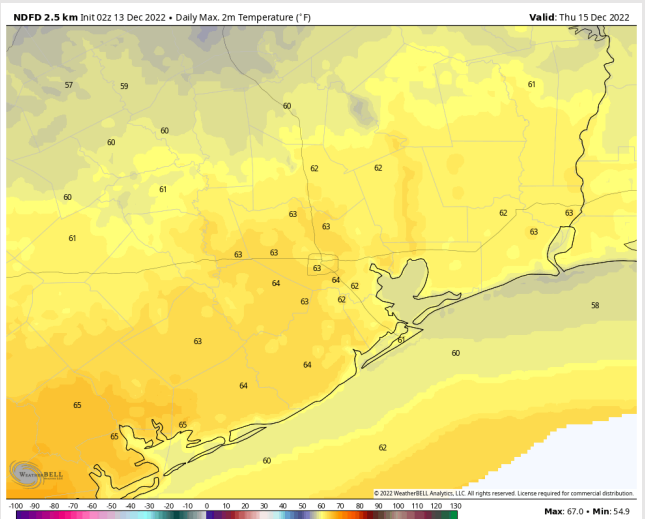
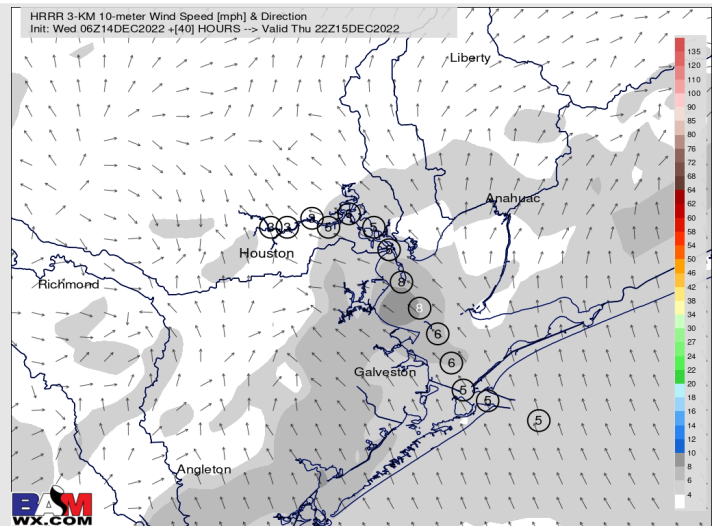
## Forecast Discussion

- Precip:** Anticipating dry conditions for the day.
- Wind:** NNE winds starting near daybreak of 3 – 8 knots. 2 - 5PM winds will be variable in direction. After ~5 PM, winds will be out of the SE at 3-8 knots.
- Temps:** High temps will be in the low to mid 60s F across all stations.
- Visibility:** Not anticipating any visibility concerns at this time.

## Precip Forecast: 12 PM CT



Wind Speed 6 PM CT



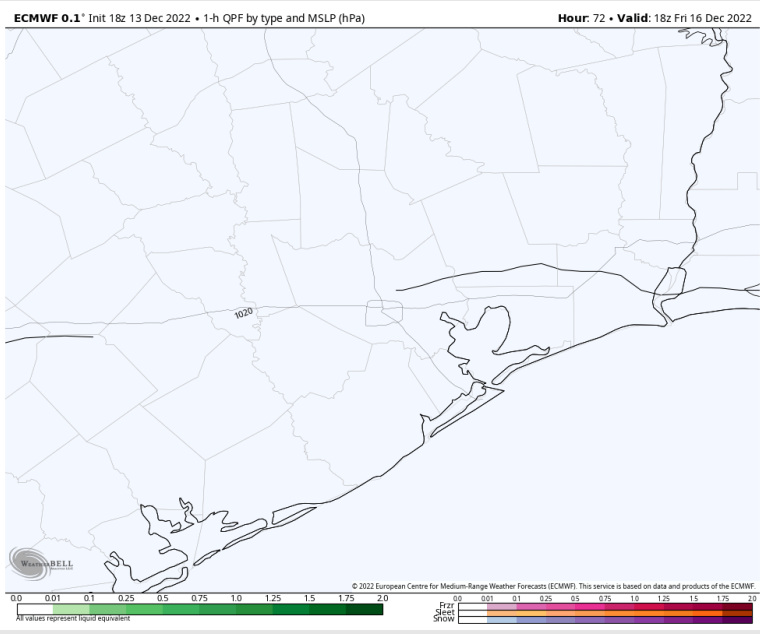
High Temps Thurs

# Houston Pilots: Fri. 12/16/2022

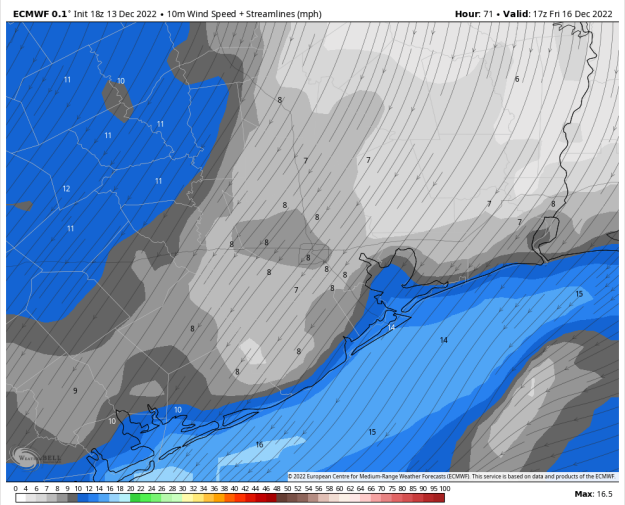
## Forecast Discussion

- Precip:** Anticipating dry conditions for Friday.
- Wind:** Calm and variable winds in the morning will favor a NE direction by 10 AM. At this time, winds N of Morgan's Point will be 4 – 8 kts and S of Morgan's Point will be 9 – 13 kts. Winds will remain as such for the rest of the day.
- Temps:** High temps Friday will be in the upper 50s F to lower 60s F across all stations.
- Visibility:** Not anticipating any visibility concerns at this time.

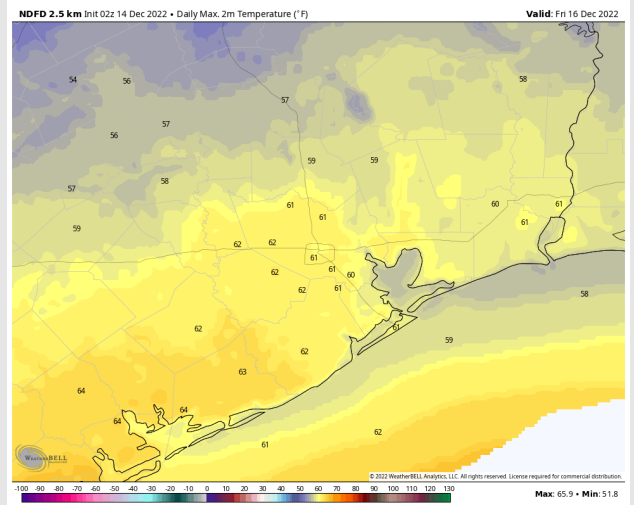
## Precip Forecast: 12 PM CT



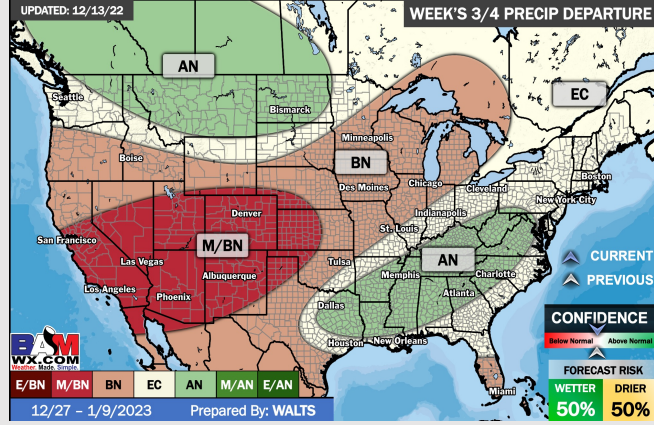
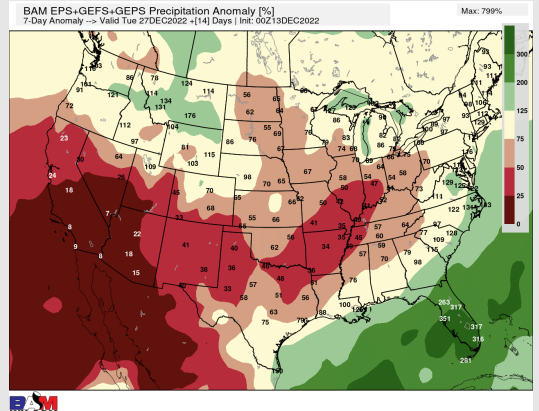
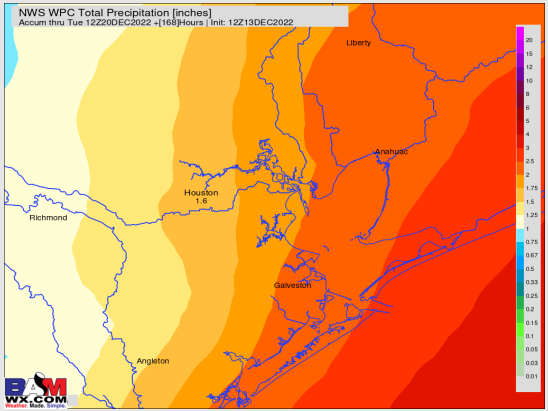
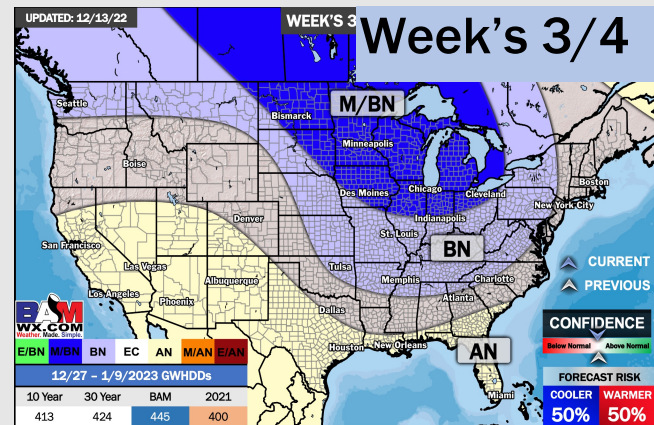
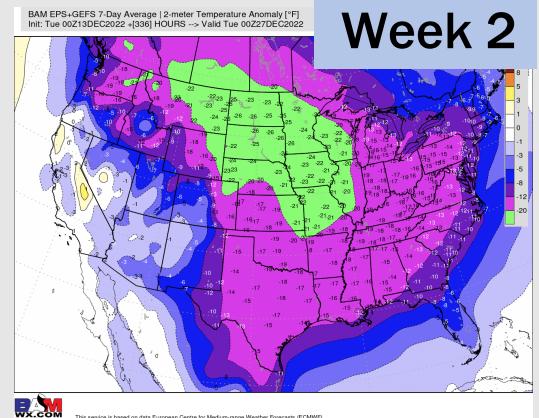
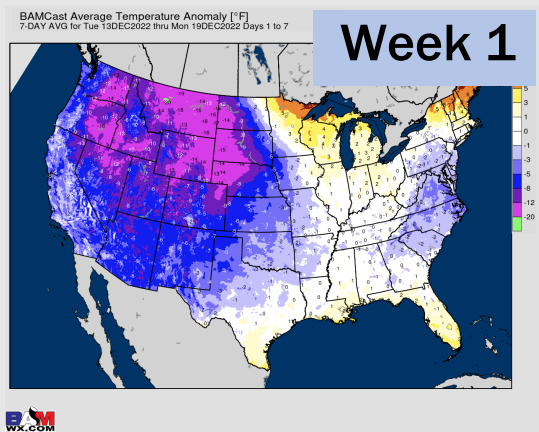
Wind Speed  
11 AM CT



High Temps  
Friday



# Houston Pilots: 12/14/22



- After rain chances this AM, precip moves out and leads to quieter weather through much of the weekend (low risk Sat AM). Better rain chances arrive next Mon/Tue. Temps will be falling below average.
- Week 2 is expected to be much below normal for temperatures and near normal for rain chances for late December
- The weeks 3/4 timeframe looks to feature slightly above normal temperatures and equal chances for precipitation.