

# Houston Pilots Forecast Package



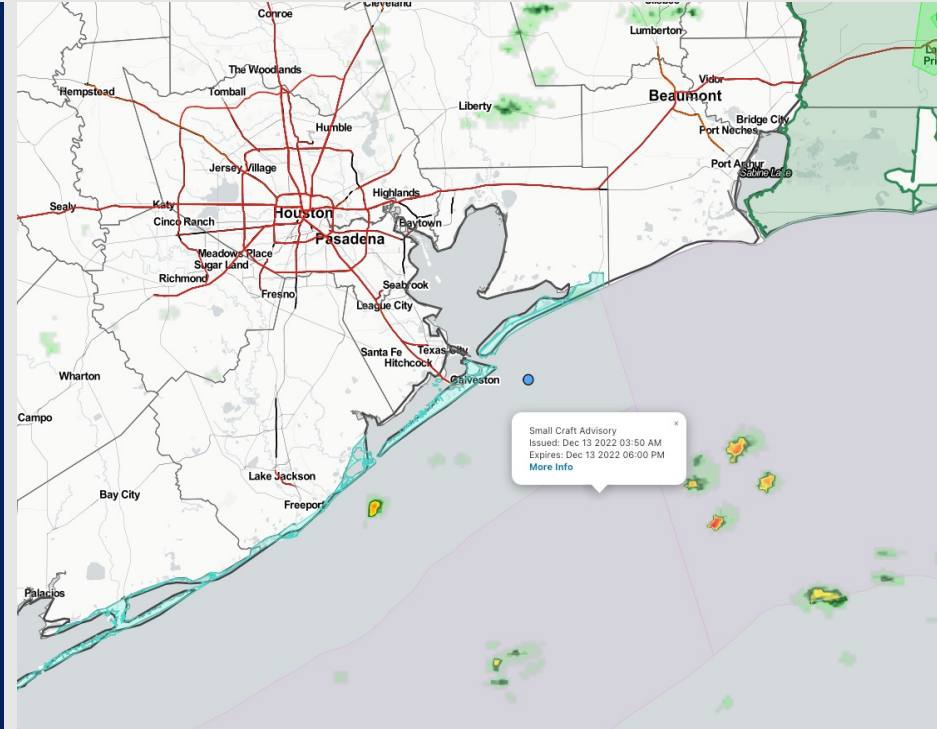
Updated: 5:00 AM CT

Tuesday, December 13, 2022

Forecaster: Vince Bryan

## Weather Headlines

- Today and Wednesday look to hold some hit and miss shower chances. By Thursday there will be dry conditions thanks to a cold front expected to work through the area (next shot of rain comes late Sunday into Monday.)
- Winds will be generally from the SE today, shifting south by the late morning. A frontal passage coming through in the early morning Wednesday will shift the winds from the NW and keep them generally out of the North Wednesday – Saturday. **Today/Wednesday look to be a breezy days with wind gusts of 25 – 30 kts possible (more on slides below.**
- **The front passing Wednesday AM will wipe out fog chances. Low to almost 0 fog threat for the back half of the week/weekend with N winds.**



**Radar/NWS Alerts: 5:00 AM CT**



As always, please do not hesitate to reach out to us with any forecast questions via the chat option on the Weather Porthole or our on-call number, **(317)-560-8122** press 1 for forecast questions.

# Houston Pilots Extended Range Visibility Report



## Friday 12/16/22

Northwesterly winds in the AM are expected to shift from the NW by noon for Friday. No fog concerns here.



## Saturday 12/17/22

Strong winds from the NE possibly in the low 10 – 15 kt range. No fog expected.



## Sunday 12/18/22

No fog is expected for Sunday.



## Chance for Reduced Visibility

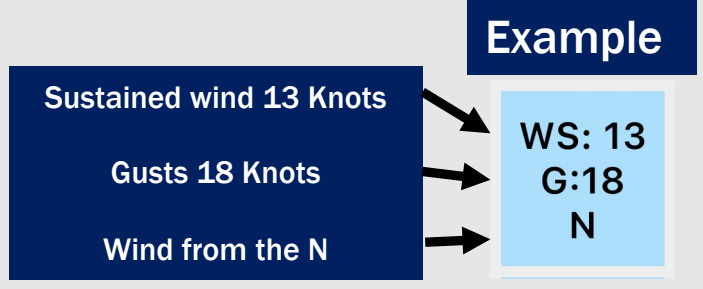
Friday AM	Unlikely
Friday PM	Unlikely
Saturday AM	Unlikely
Saturday PM	Unlikely
Sunday AM	Unlikely
Sunday PM	Unlikely

# Houston Pilots Visibility Report



Time	Tue 3am	Tue 4am	Tue 5am	Tue 6am	Tue 7am	Tue 8am	Tue 9am	Tue 10am	Tue 11am	Tue 12pm	Tue 1pm	Tue 2pm	Tue 3pm	Tue 4pm	Tue 5pm	Tue 6pm	Tue 7pm	Tue 8pm	Tue 9pm	Tue 10pm	Tue 11pm	Wed 12am	Wed 1am	Wed 2am	Wed 3am	Wed 4am	Wed 5am	Wed 6am	Wed 7am	Wed 8am	Wed 9am	Wed 10am	Wed 11am	Wed 12pm	Wed 1pm	Wed 2pm	
610 Bridge	10	10	9	9	9	6	10	10	10	10	10	10	10	10	10	8	8	10	10	8	7	6	6	6	6	7	8	10	10	9	10	10	10	10	10	10	10
Kinder 1	10	10	9	9	9	6	10	10	10	10	10	10	10	10	10	8	8	10	10	8	7	7	6	6	6	7	8	10	10	9	10	10	10	10	10	10	10
Greens Bayou	10	10	9	9	9	6	10	10	10	10	10	10	10	10	10	8	8	10	10	8	7	7	6	6	6	6	7	10	10	9	10	10	10	10	10	10	10
Shell Crude	10	10	9	10	9	7	10	10	10	10	10	10	10	10	10	8	8	10	10	8	7	7	6	6	6	6	7	10	10	9	10	10	10	10	10	10	10
Lynchburg Ferries	10	10	9	10	9	7	10	10	10	10	10	10	10	10	10	8	8	10	10	8	7	7	6	6	6	6	7	9	10	9	10	10	10	10	10	10	10
Exxon 3	10	10	10	10	10	10	10	10	10	10	10	10	10	10	10	8	8	10	9	8	7	7	6	6	6	6	7	9	10	9	10	10	10	10	10	10	10
Morgans Point	10	10	10	10	10	10	10	10	10	10	10	10	10	10	10	8	8	10	8	8	7	7	6	6	6	6	7	9	9	9	9	9	10	10	10	10	10
75/76	10	10	10	10	10	10	10	10	10	10	10	10	10	10	10	8	8	10	8	8	7	7	6	6	6	6	8	9	9	9	9	7	10	10	10	10	10
63/64	10	10	10	10	10	10	10	10	10	10	10	10	10	10	10	8	8	10	8	8	7	7	6	6	6	7	8	9	9	9	9	7	9	10	10	10	10
51/52	10	10	10	10	10	10	10	10	10	10	10	10	10	10	10	8	8	10	8	8	7	7	6	6	6	7	8	9	9	9	6	7	10	10	10	10	
37/38	10	10	10	10	10	10	10	10	10	10	10	10	10	10	10	8	8	9	8	8	7	7	7	7	8	7	8	9	9	6	6	7	9	10	10	10	10
25/26	10	10	10	10	10	10	10	10	10	10	10	10	10	10	10	8	8	8	8	8	7	7	8	8	8	7	8	9	9	5	6	7	9	10	10	10	10
11/12	10	10	10	10	10	10	10	10	10	10	10	10	10	10	10	8	8	8	8	8	7	7	8	8	8	7	8	9	6	6	6	7	9	10	10	10	10
1 & 2 Bravo	10	10	10	10	10	10	10	10	10	10	10	10	9	9	8	8	8	8	8	8	7	7	8	8	8	7	7	6	7	7	4	7	9	10	10	10	10

# Houston Pilots Wind Report



Time Knots	Tue 3am	Tue 4am	Tue 5am	Tue 6am	Tue 7am	Tue 8am	Tue 9am	Tue 10am	Tue 11am	Tue 12pm	Tue 1pm	Tue 2pm	Tue 3pm	Tue 4pm	Tue 5pm	Tue 6pm	Tue 7pm	Tue 8pm	Tue 9pm	Tue 10pm	Tue 11pm	Wed 12am	Wed 1am	Wed 2am	Wed 3am	Wed 4am	Wed 5am	Wed 6am	Wed 7am	Wed 8am	Wed 9am	Wed 10am	Wed 11am	Wed 12pm	Wed 1pm	Wed 2pm	
610 Bridge	8 SE	7 SSE	7 SSE	8 SSE	8 SSE	9 S	11 S	11 S	12 S	13 SSW	14 SSW	14 SSW	12 SW	9 SW	7 SSW	11 SSW	10 SSW	9 WNW	8 WNW	6 NW	6 N	5 N	5 SSW	4 N	4 N	5 N	6 NNW	6 NNW	7 NNW	8 NNW	9 NNW	9 NNW	16 NNW	15 NNW	8 NNW	9 NNW	
Kinder 1	8 SE	7 SSE	7 SSE	8 SSE	8 SSE	9 S	11 S	11 S	12 S	13 SSW	14 SSW	14 SSW	13 SW	9 SW	7 SSW	11 SSW	10 SSW	8 W	7 WNW	6 NW	6 N	5 ENE	4 N	4 N	4 N	5 NNW	6 NNW	6 NNW	7 NNW	9 NNW	9 NNW	16 NNW	15 NNW	8 NNW	9 NNW		
Greens Bayou	10 SSE	9 SSE	8 SSE	8 SSE	8 SSE	9 S	11 S	11 S	12 S	13 SSW	14 SSW	14 SSW	15 SW	9 SW	7 SSW	11 SSW	10 SSW	8 W	7 WNW	6 NW	6 N	4 ENE	3 N	3 N	4 N	5 NNW	6 NNW	6 NNW	7 NNW	9 NNW	9 NNW	15 NNW	14 NNW	8 NNW	9 NNW		
Shell Crude	10 SSE	9 SSE	9 SSE	8 SSE	8 SSE	9 S	11 S	11 S	12 S	13 SSW	14 SSW	14 SSW	14 SW	9 SW	7 SSW	11 SSW	11 SSW	9 W	8 WNW	7 NW	6 NNW	5 NNW	4 NNW	4 NNW	4 NNW	6 NNW	6 NNW	6 NNW	8 NNW	9 NNW	10 NNW	10 NNW	9 NNW	8 NNW	9 NNW		
Lynchburg Ferries	10 SSE	9 SSE	9 SSE	8 SSE	8 SSE	9 S	11 S	11 S	12 S	13 SSW	14 SSW	14 SSW	14 SW	9 SW	7 SSW	11 SSW	11 SSW	9 W	8 WNW	7 NW	6 NNW	5 NNW	4 NNW	4 NNW	4 NNW	6 NNW	6 NNW	6 NNW	8 NNW	9 NNW	10 NNW	10 NNW	9 NNW	8 NNW	9 NNW		
Exxon 3	11 SSE	12 SSE	11 SSE	12 SSE	10 SSE	10 SSE	10 SSE	11 SSE	12 SSE	13 SSE	14 SSE	13 SSE	14 SSE	11 SSE	8 SSE	13 SSE	12 SSE	11 SSE	10 SSE	9 SSE	7 SSE	7 SSE	6 SSE	5 SSE	5 SSE	6 SSE	7 SSE	7 SSE	8 SSE	9 SSE	11 SSE	11 SSE	10 SSE	9 SSE	8 SSE	9 SSE	
Morgans Point	14 SSE	13 SSE	12 SSE	13 SSE	12 SSE	12 SSE	11 SSE	12 SSE	12 SSE	13 SSE	14 SSE	15 SSE	15 SSE	11 SSE	10 SSE	13 SSE	12 SSE	11 SSE	10 SSE	10 SSE	8 SSE	7 SSE	7 SSE	6 SSE	5 SSE	6 SSE	7 SSE	7 SSE	8 SSE	10 SSE	11 SSE	12 SSE	11 SSE	11 SSE	10 SSE	8 SSE	9 SSE
75/76	14 SSE	13 SSE	12 SSE	13 SSE	12 SSE	12 SSE	11 SSE	12 SSE	12 SSE	13 SSE	14 SSE	15 SSE	15 SSE	11 SSE	10 SSE	13 SSE	12 SSE	11 SSE	10 SSE	10 SSE	8 SSE	7 SSE	7 SSE	6 SSE	5 SSE	6 SSE	7 SSE	7 SSE	8 SSE	10 SSE	11 SSE	12 SSE	11 SSE	11 SSE	10 SSE	8 SSE	9 SSE
63/64	13 SSE	13 SSE	12 SSE	12 SSE	13 SSE	12 SSE	13 SSE	14 SSE	15 SSE	14 SSE	15 SSE	15 SSE	11 SSE	13 SSE	14 SSE	14 SSE	13 SSE	12 SSE	11 SSE	10 SSE	9 SSE	8 SSE	7 SSE	7 SSE	7 SSE	7 SSE	8 SSE	10 SSE	11 SSE	13 SSE	14 SSE	14 SSE	14 SSE	12 SSE	10 SSE	11 SSE	15 SSE
51/52	13 SSE	13 SSE	11 SSE	12 SSE	10 SSE	13 SSE	13 SSE	14 SSE	14 SSE	15 SSE	14 SSE	13 SSE	13 SSE	13 SSE	13 SSE	15 SSE	14 SSE	13 SSE	12 SSE	11 SSE	10 SSE	9 SSE	8 SSE	7 SSE	7 SSE	7 SSE	8 SSE	10 SSE	12 SSE	14 SSE	14 SSE	15 SSE	14 SSE	14 SSE	13 SSE	11 SSE	11 SSE
37/38	12 SSE	12 SSE	11 SSE	11 SSE	10 SSE	13 SSE	13 SSE	14 SSE	14 SSE	15 SSE	13 SSE	14 SSE	14 SSE	14 SSE	13 SSE	15 SSE	15 SSE	14 SSE	13 SSE	12 SSE	11 SSE	10 SSE	9 SSE	8 SSE	8 SSE	7 SSE	9 SSE	10 SSE	12 SSE	14 SSE	15 SSE	16 SSE	15 SSE	14 SSE	12 SSE	11 SSE	16 SSE
25/26	12 SSE	12 SSE	11 SSE	11 SSE	10 SSE	13 SSE	13 SSE	14 SSE	14 SSE	15 SSE	14 SSE	14 SSE	14 SSE	14 SSE	13 SSE	16 SSE	15 SSE	14 SSE	14 SSE	13 SSE	12 SSE	11 SSE	10 SSE	9 SSE	8 SSE	8 SSE	9 SSE	10 SSE	12 SSE	14 SSE	15 SSE	16 SSE	16 SSE	15 SSE	13 SSE	12 SSE	17 SSE
11/12	13 SSE	13 SSE	13 SSE	10 SSE	12 SSE	14 SSE	15 SSE	14 SSE	14 SSE	13 SSE	14 SSE	14 SSE	14 SSE	12 SSE	12 SSE	16 SSE	16 SSE	14 SSE	14 SSE	14 SSE	13 SSE	12 SSE	11 SSE	10 SSE	9 SSE	9 SSE	9 SSE	11 SSE	13 SSE	15 SSE	16 SSE	17 SSE	17 SSE	15 SSE	14 SSE	14 SSE	17 SSE
1 & 2 Bravo	13 SSE	14 SSE	13 SSE	11 SSE	13 SSE	14 SSE	14 SSE	14 SSE	13 SSE	13 SSE	11 SSE	9 SSE	8 SSE	11 SSE	14 SSE	17 SSE	16 SSE	15 SSE	15 SSE	14 SSE	14 SSE	13 SSE	12 SSE	11 SSE	10 SSE	9 SSE	9 SSE	10 SSE	12 SSE	14 SSE	15 SSE	17 SSE	18 SSE	19 SSE	17 SSE	14 SSE	18 SSE

# Houston Pilots: Tue. 12/13/2022



## Forecast Discussion

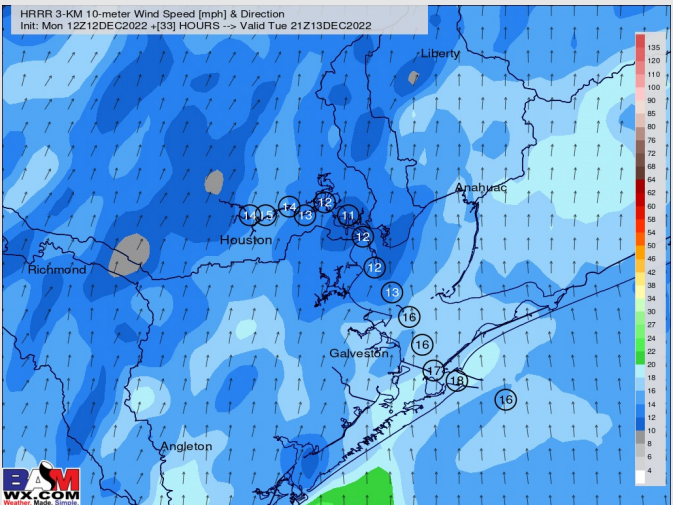
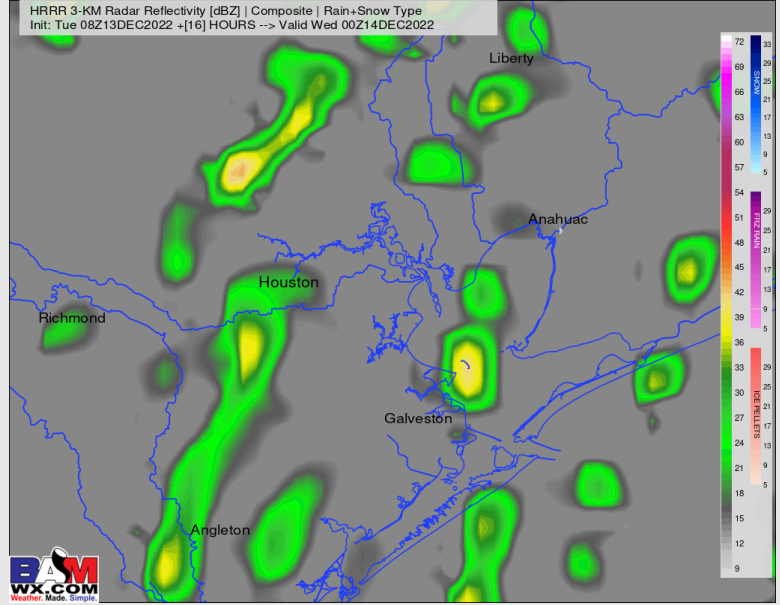
**Precip:** Hit and miss ~30% chances for a few showers and thunderstorms will be possible for much of the day today. Increased chances for those showers and thunderstorms happen between 4 – 11 PM (60%) as coverage is expected to increase. Spotty showers will linger through midnight as a cold front passes the area.

**Wind:** SE winds this morning and afternoon before shifting out of the SSW after sundown. Winds will be 8 – 13 kts for much of the morning, rising to 10-15 knots by 11 AM. A few gusts between 10 AM and 4 PM of 20-25 knots possible, with general gusts outside of this period around 13 - 18 knots. Winds likely calm a bit closer to midnight before the next front arrives early Wed AM.

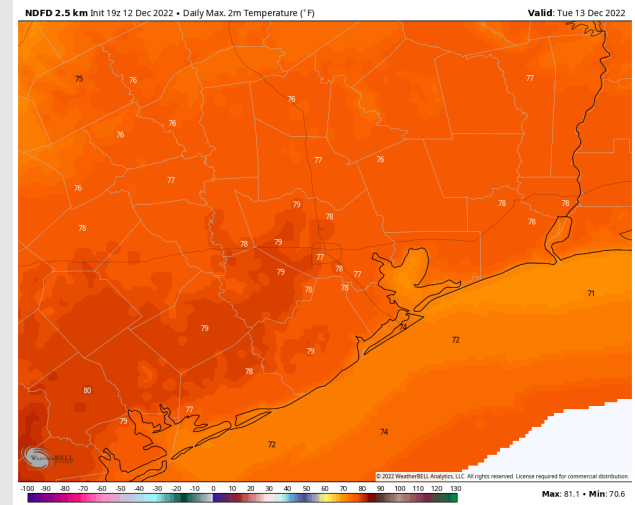
**Temps:** High temps will be in the low to mid 70's today.

**Visibility:** Fog will not be favored as winds will be elevated + water temps have warmed recently (not super favorable for fog). We will continue to monitor.

## Precip Forecast: 6 PM CT



Wind Speed  
3 PM CT



High Temps  
Today

# Houston Pilots: Weds. 12/14/2022



## Forecast Discussion

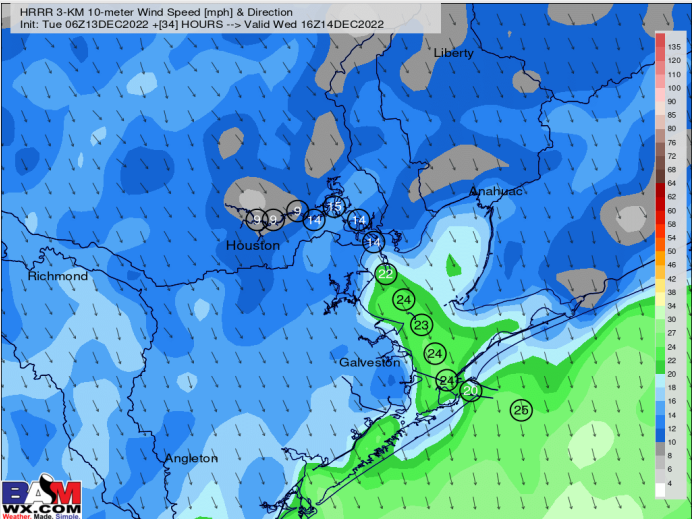
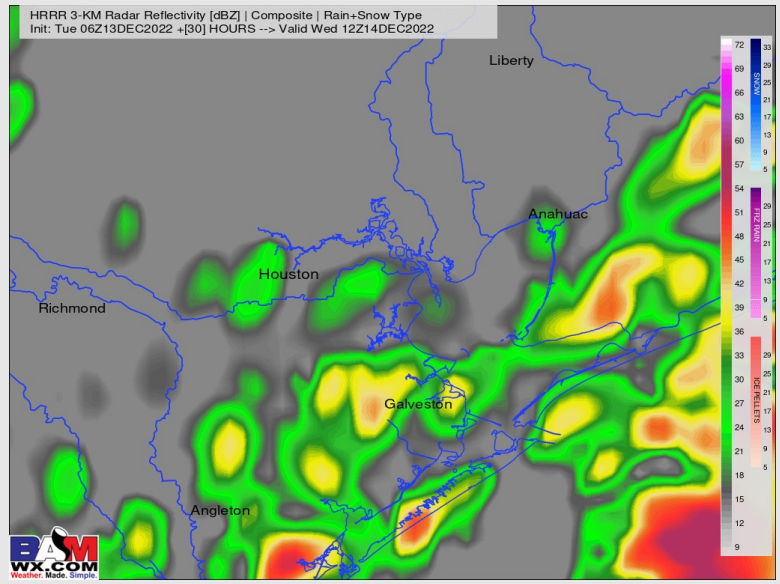
**Precip:** As a cold front passes the area in the 12-3 AM window Wednesday, showers and a few thunderstorms will be around the area. Scattered showers and thunderstorms will continue out through at least 10 AM before chances diminish closer to 30-40%. Those chances continue until ~3-4 PM where all precip should slide off to the east and lead to a quieter PM.

**Wind:** Variable wind direction in the early morning hours from 12 AM – 7 AM will favor a NW wind by 10 AM and remain as such for the rest of the day. Winds start around 5-10 knots. By 10 AM winds will pickup across all stations to 11 – 14 kts N of Morgan’s point and 18 – 24 kts S. After 4 PM winds are 8 – 13 knots the rest of the day. **Wind gusts 11AM – 2 PM will be around 25 – 35 kts for a brief period across all stations.**

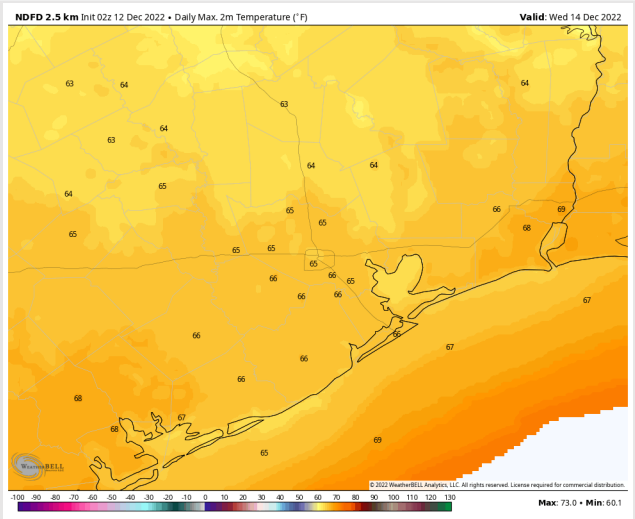
**Temps:** High temps Wednesday will be in the mid 60s F across all stations.

**Visibility:** Not anticipating any fog concerns once the front passes. However, heavier thunderstorms could reduce visibilities to less than 2 miles for brief periods.

## Precip Forecast: 6 AM CT



Wind Speed  
10 AM CT



High Temps  
Wednesday

## Forecast Discussion

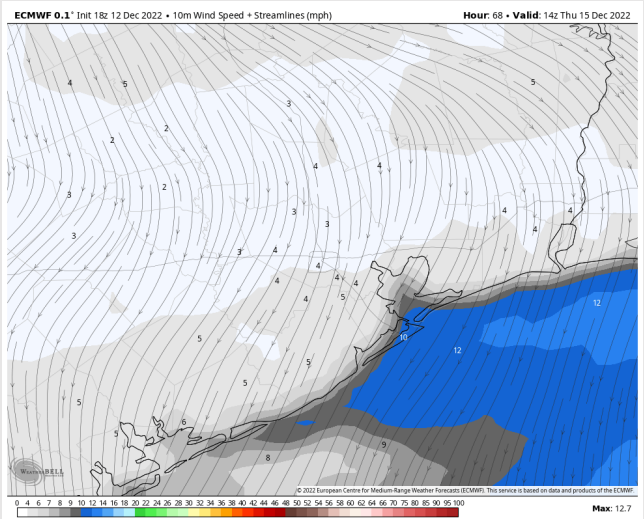
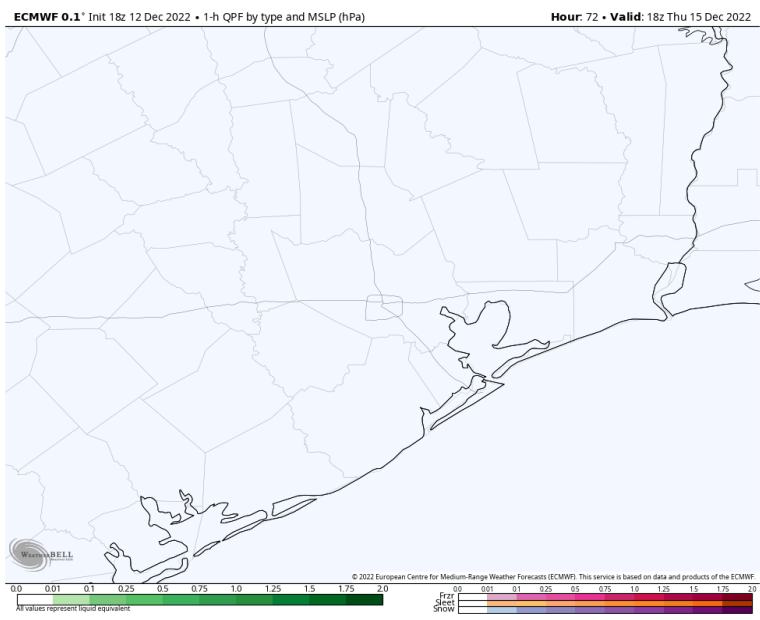
**Precip:** Anticipating dry conditions for the day.

**Wind:** NNE winds in the morning will shift from the NNW in the late morning. After 2 PM winds will be from variable directions for the rest of the day. Winds will start out at 2 – 4 kts N of Morgan’s Point and 7 – 11 kts S of Morgan’s Point. By 12 PM winds will calm to 0 – 5 kts for the remainder of the day and evening.

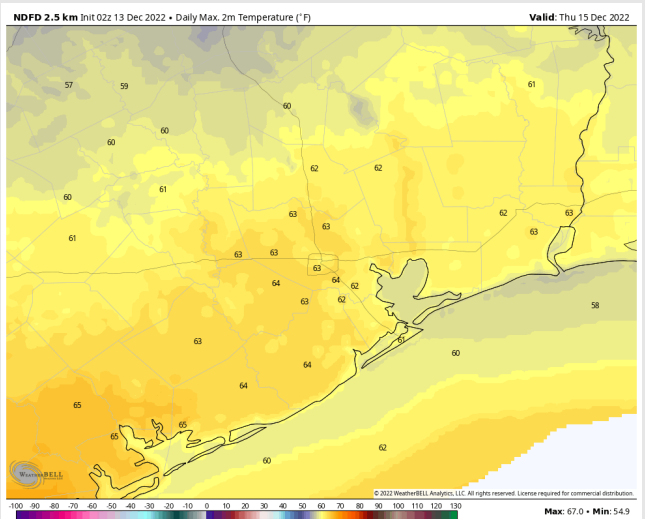
**Temps:** High temps will be in the low to mid 60s F across all stations.

**Visibility:** Not anticipating any visibility concerns at this time.

## Precip Forecast: 12 PM CT



Wind Speed  
8 AM CT

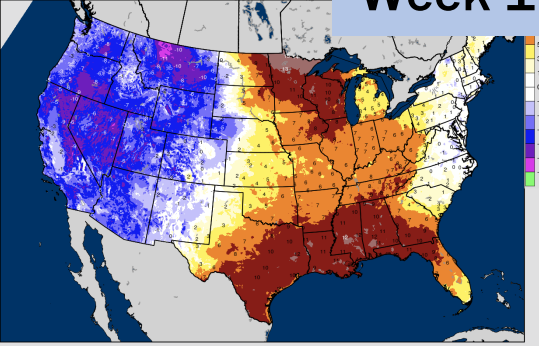


High Temps  
Thurs

# Houston Pilots: 12/13/22

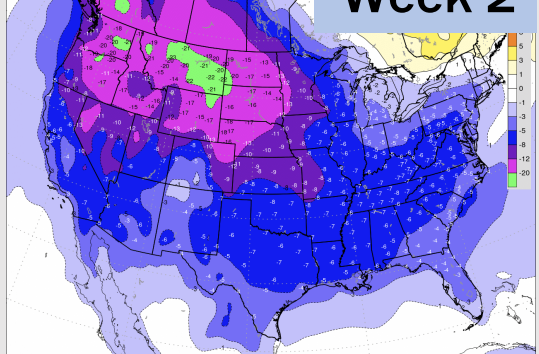
BAMcast Average Temperature Anomaly [°F]  
7-DAY AVG for Fri 09DEC2022 thru Thu 15DEC2022 Days 1 to 7

## Week 1



BAM EPS-GEFS 7-Day Average | 2-meter Temperature Anomaly [°F]  
Init: Fri 00Z09DEC2022 - (398) HOURS -> Valid Fri 00Z23DEC2022

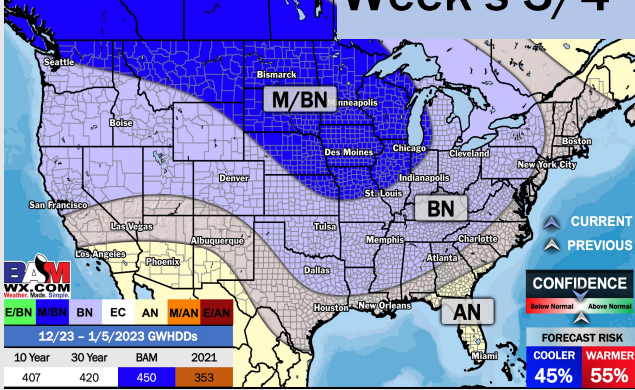
## Week 2



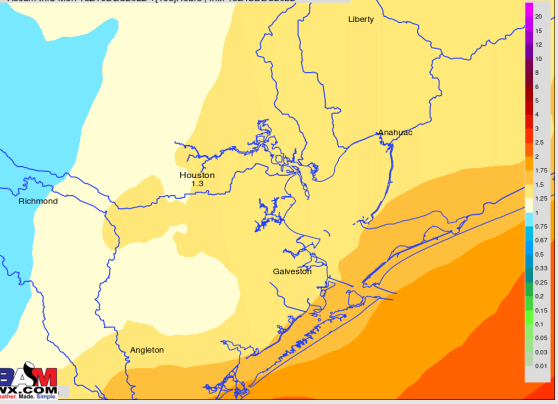
This service is based on data European Centre for Medium-range Weather Forecasts (ECMWF)

UPDATED: 12/9/22

## Week's 3/4

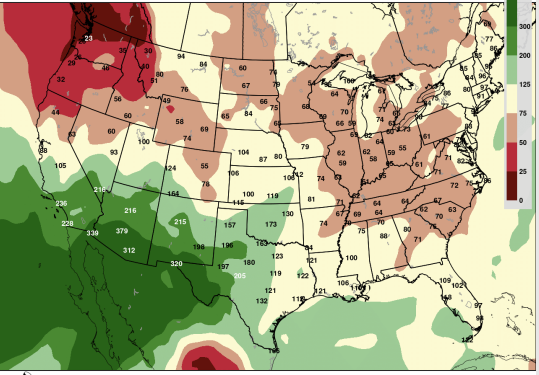


NWS WPC Total Precipitation [inches]  
Accum thru Mon 18Z19DEC2022 - (1168)Hours | Init: 18Z12DEC2022



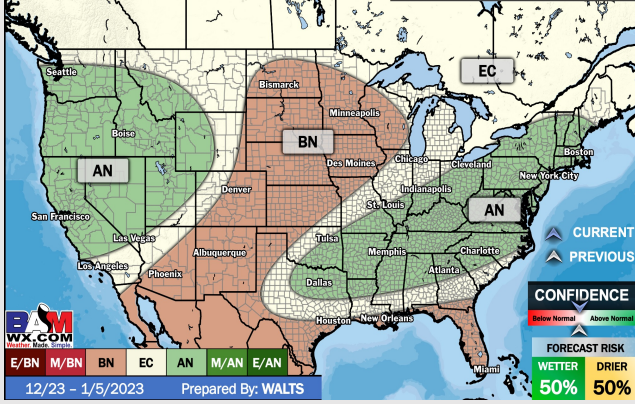
BAM EPS-GEFS-GEPS Precipitation Anomaly [%]  
7-Day Anomaly -> Valid Fri 23DEC2022 - (14) Days | Init: 00Z09DEC2022

Max: 1318%



UPDATED: 12/9/22

## WEEK'S 3/4 PRECIP DEPARTURE



- Rain chances Tue/Wed before precip moves out and leads to quieter weather through much of the weekend. Better rain chances arrive to start next work week. Temps will be above average.
- Week 2 is expected to be below normal for temperatures and near normal for rain chances for mid December.
- The weeks ¾ timeframe looks to feature below normal temperatures and equal chances to below normal for precipitation.