

Houston Pilots Forecast Package



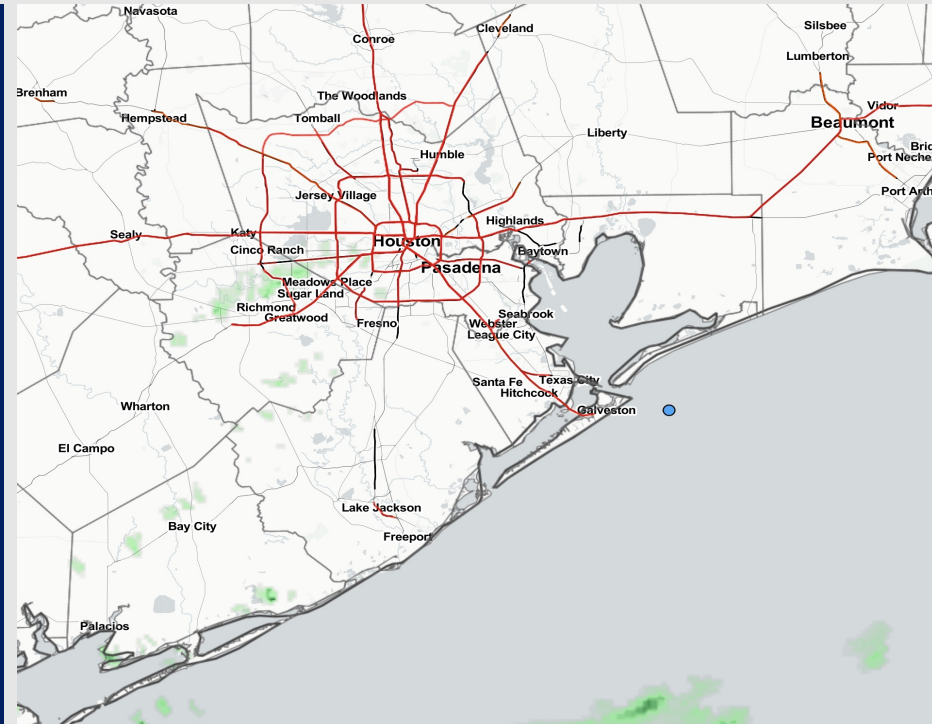
Updated: 2:00 PM CT

Sunday, December 11, 2022

Forecaster: Alyssa McClung

Weather Headlines

- Scattered showers/isolated this evening, as well as for Tuesday. Monday looks to be the driest with a slight chance of a shower.
- Winds will be variable in directions for today and tomorrow in the 5 -15 kt range. **Tuesday looks to be a breezy day with wind gusts of 25 – 30 kts possible with another cold front passage.**
- **Low end patchy fog threats exist for Sunday evening/Monday Morning, but beyond this timeframe anticipating no fog concerns as winds shift from the NW.**



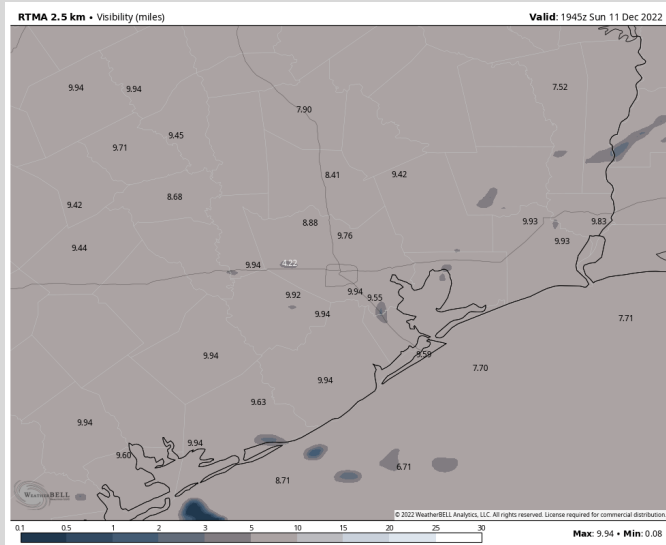
Radar/NWS Alerts: 1:45 PM CT



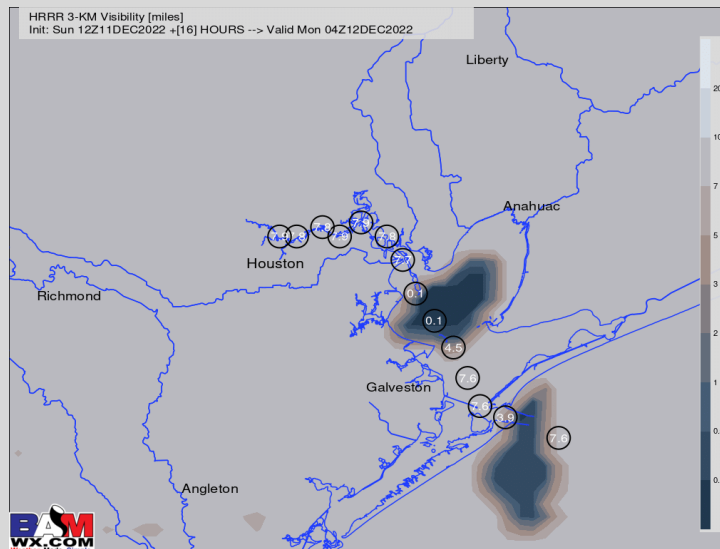
As always, please do not hesitate to reach out to us with any forecast questions via the chat option on the Weather Porthole or our on-call number, **(317)-560-8122** press 1 for forecast questions.

Houston Pilots Visibility Report

Current Visibility as of 1:45 PM CT



10 PM CT SUN Visibility



Confidence

Above
Normal

Below
Normal

Reduced Visibility Threat

Now - 10 AM SUN

Low-
Medium

- Anticipating a risk for patchy fog to begin to work back into the Bay region after 7 PM. Favoring 12 AM through 7 AM to be the timeframe for the greatest risk of patchy fog between Morgan's Point and the Boarding Station.
- Low end risk for fog to become dense, but as of now favoring this fog to be patchy in nature.
- Reduced visibilities of 1 mile or less will be a risk with this fog.
- Expecting fog to move out of the area by 10 AM Monday as winds start to become elevated.
- Overall confidence is low for coverage and end timing for this fog risk.

Houston Pilots Extended Range Visibility Report



Wednesday 12/14/22

Anticipating winds to shift out of the NW Wednesday from a cold front. This will bring an end to fog potentials.

Confidence



Friday 12/16/22

Northwesterly winds expected again for Friday, thus no fog concerns.

Confidence



Thursday 12/15/22

Northwesterly dry air expected. No fog concerns.

Confidence



Chance for Reduced Visibility	
Wednesday AM	Unlikely
Wednesday PM	Unlikely
Thursday AM	Unlikely
Thursday PM	Unlikely
Friday AM	Unlikely
Friday PM	Unlikely

Houston Pilots Visibility Report



Time	Sun 11am	Sun 12pm	Sun 1pm	Sun 2pm	Sun 3pm	Sun 4pm	Sun 5pm	Sun 6pm	Sun 7pm	Sun 8pm	Sun 9pm	Sun 10pm	Sun 11pm	Mon 12am	Mon 1am	Mon 2am	Mon 3am	Mon 4am	Mon 5am	Mon 6am	Mon 7am	Mon 8am	Mon 9am	Mon 10am	Mon 11am	Mon 12pm	Mon 1pm	Mon 2pm	Mon 3pm	Mon 4pm	Mon 5pm	Mon 6pm	Mon 7pm	Mon 8pm	Mon 9pm	Mon 10pm	
610 Bridge	10	10	10	10	10	10	10	10	10	10	10	7	6	5	4	3	2	0.52	0.52	0.52	0.28	0.28	4	7	10	10	10	10	10	10	10	10	10	9	6	6	5
Kinder 1	10	10	10	10	10	10	10	10	10	10	10	7	6	5	4	3	2	2	2	2	2	2	5	7	10	10	10	10	10	10	10	10	10	9	7	6	5
Greens Bayou	10	10	10	10	10	10	10	10	10	10	9	6	6	5	4	3	5	4	4	4	4	4	6	7	10	10	10	10	10	10	10	10	10	9	7	6	6
Shell Crude	10	10	10	10	10	10	10	10	10	10	9	6	6	4	3	3	7	7	7	7	7	7	7	7	10	10	10	10	10	10	10	10	10	8	7	7	7
Lynchburg Ferries	10	10	10	10	10	10	10	10	10	10	9	6	6	4	3	3	7	7	7	7	7	7	7	7	10	10	10	10	10	10	10	10	10	8	7	7	7
Exxon 3	10	10	10	10	10	10	10	10	10	10	8	6	5	4	3	2	7	7	7	7	7	7	7	7	10	10	10	10	10	10	10	9	7	7	7	7	
Morgans Point	10	10	10	10	10	10	10	10	10	10	7	6	5	4	3	2	7	7	7	7	7	7	7	7	10	10	10	10	10	10	10	9	7	7	7	7	
75/76	10	10	10	10	10	10	10	10	10	10	7	6	5	4	3	2	7	7	7	7	7	7	7	7	9	10	10	10	10	10	10	9	7	7	7	7	
63/64	10	10	10	10	10	10	10	10	10	9	7	6	5	4	3	2	7	7	7	7	7	7	7	7	9	10	10	10	10	10	10	9	7	7	7	7	
51/52	9	10	10	10	10	10	10	10	10	9	6	6	4	4	2	1	7	7	7	7	7	7	7	7	7	10	10	10	10	10	10	7	7	7	7	7	
37/38	8	10	10	10	10	10	10	10	10	8	6	5	4	3	2	1	7	7	7	7	7	7	7	7	7	9	10	10	10	10	8	7	7	7	7	7	
25/26	6	8	10	10	10	10	10	10	9	7	5	4	4	3	2	1	7	7	7	7	7	7	7	7	7	7	7	7	9	9	7	7	7	7	7	7	
11/12	6	9	10	10	10	10	10	10	9	7	5	4	4	3	2	1	7	7	7	7	7	7	7	7	7	7	7	9	9	7	7	7	7	7	7	7	
1 & 2 Bravo	6	9	7	9	9	9	10	10	10	9	6	4	4	3	2	1	7	7	7	7	6	7	7	7	7	7	7	7	7	7	7	7	7	7	7	7	

Please check visibility slides above for official thinking on fog as the chart is likely not perfect.

The image contains two logos. On the left is the logo for BAM WX.COM, featuring the letters 'BAM' in a stylized font with a white 'A' and a black and white swirl, followed by 'WX.COM' in black and 'Weather. Made. Simple.' in blue and red. On the right is the logo for Houston Pilots, featuring a large red 'H' with the text 'Houston Pilots' in white and black.

Example

**Below
Normal**

Wind from the N

WS: 13
G:18
N

Time	Sun Knots	Sun 11am	Sun 12pm	Sun 1pm	Sun 2pm	Sun 3pm	Sun 4pm	Sun 5pm	Sun 6pm	Sun 7pm	Sun 8pm	Sun 9pm	Sun 10pm	Sun 11pm	Mon 12am	Mon 1am	Mon 2am	Mon 3am	Mon 4am	Mon 5am	Mon 6am	Mon 7am	Mon 8am	Mon 9am	Mon 10am	Mon 11am	Mon 12pm	Mon 1pm	Mon 2pm	Mon 3pm	Mon 4pm	Mon 5pm	Mon 6pm	Mon 7pm	Mon 8pm	Mon 9pm	Mon 10pm	
610 Bridge	3	2	4	4	9	9	7	5	6	6	5	5	5	4	4	4	4	4	4	4	4	5	6	6	7	7	9	9	9	9	9	9	9	9	9	9	9	
	8	5	6	7	14	16	14	12	14	14	12	13	13	12	11	7	6	7	7	7	7	7	8	8	10	10	13	14	15	16	15	16	15	16	15	14	14	
Kinder 1	NNW	WSW	NW	NNW	N	NNE	NNE	NNE	NE	NE	NE	ENE	ENE	NE	NE	NE	NE	ENE	ENE	ENE	E	E	E	E	ESE	ESE	ESE	ESE	ESE	ESE	ESE	ESE	ESE	ESE	ESE	ESE	ESE	
	3	2	4	4	9	9	7	5	6	6	5	5	5	4	4	3	3	3	4	4	4	5	6	6	7	7	8	9	10	11	13	14	14	16	15	15	15	14
Greens Bayou	4	4	6	7	14	16	14	13	14	13	12	14	13	11	11	6	6	7	7	7	7	7	8	8	9	10	11	13	14	14	16	15	15	15	14	14		
	NNW	WSW	NW	NW	N	NNE	NNE	NNE	NE	NE	NE	ENE	ENE	NE	ENE	NE	ENE	ENE	ENE	ENE	E	E	E	E	ESE	ESE	ESE	ESE	ESE	ESE	ESE	ESE	ESE	ESE	ESE	ESE	ESE	
Shell Crude	3	2	4	4	9	9	7	5	4	6	6	6	6	5	5	3	3	3	4	4	3	5	6	6	7	7	9	9	10	10	10	9	9	9	9	9	9	
	3	5	7	7	14	16	14	13	12	14	13	14	14	12	11	6	6	6	6	7	7	7	8	8	9	10	10	12	13	14	16	15	15	15	14	14		
	S	SW	NW	NW	N	N	NNE	NNE	NE	NE	NE	ENE	ENE	NE	ENE	NE	NE	ENE	ENE	ENE	E	E	E	E	E	ESE	ESE	ESE	ESE	ESE	ESE	ESE	ESE	ESE	ESE	ESE	ESE	
	4	2	4	4	9	9	6	5	4	6	5	6	5	4	4	3	3	4	4	4	4	5	6	6	7	7	9	10	10	10	9	9	10	9	9	9		
	5	4	7	7	14	15	13	13	12	14	12	14	13	12	11	6	6	6	6	7	7	7	8	8	8	9	10	10	12	13	14	16	15	15	15	14	14	
	SSW	WSW	NW	NW	N	N	NNE	NNE	NE	NE	NE	ENE	ENE	NE	ENE	NE	NE	ENE	ENE	ENE	ENE	E	E	E	E	ESE	ESE	ESE	ESE	ESE	ESE	ESE	ESE	ESE	ESE	ESE	ESE	
Lynchburg Ferries	4	3	4	4	9	9	6	5	6	6	6	6	5	4	4	5	5	5	6	6	6	6	6	7	6	7	7	8	9	10	10	10	10	10	11	10	10	10
	5	4	8	7	13	15	13	12	13	14	13	14	13	12	11	7	7	7	7	7	7	8	8	9	10	10	12	13	14	15	16	15	16	15	16	15	15	
Exxon 3	SSW	SW	NW	NW	N	N	NNE	NNE	NE	NE	NE	ENE	ENE	NE	ENE	NE	ENE	ENE	ENE	ENE	E	E	E	E	E	ESE	ESE	ESE	ESE	ESE	ESE	ESE	ESE	ESE	ESE	ESE	ESE	
	5	5	4	3	6	9	6	4	6	6	5	5	4	4	4	5	5	5	6	6	6	6	7	7	7	7	8	9	10	10	10	10	10	11	11	10	10	
	7	7	7	6	8	14	14	11	13	14	12	13	13	12	11	7	7	7	7	8	8	8	8	9	9	10	10	11	12	13	14	15	16	16	16	15	15	15
	SSW	SW	NW	NW	N	N	NNE	NNE	NE	NE	NE	ENE	ENE	NE	ENE	ENE	ENE	ENE	ENE	ENE	E	E	E	E	E	ESE	ESE	ESE	ESE	ESE	ESE	ESE	ESE	ESE	ESE	ESE	ESE	
Morgans Point	5	5	4	3	3	8	6	4	4	6	7	5	7	5	4	5	5	5	6	6	6	7	7	7	7	7	8	9	10	10	10	10	10	11	11	10	10	
	8	7	6	5	6	14	13	12	12	13	12	13	13	12	11	8	8	8	8	8	9	9	9	10	10	10	10	11	12	13	14	15	16	17	17	16	16	
	SW	SSW	WNW	WNW	N	N	N	NE	E	NE	ENE	NE	NE	NE	NE	ENE	ENE	ENE	ENE	ENE	ENE	E	E	E	E	ESE	ESE	ESE	ESE	ESE	ESE	ESE	ESE	ESE	ESE	ESE	ESE	
	6	5	4	3	4	5	7	6	5	7	9	6	9	8	6	6	6	6	6	6	6	7	7	7	7	7	8	8	9	10	10	10	10	11	11	11	11	
75/76	8	7	6	4	6	9	12	12	11	12	13	13	14	13	12	8	8	8	8	8	9	9	9	10	10	10	11	12	13	14	14	15	16	17	17	17	17	
	SW	SW	SW	SW	SE	N	N	ENE	E	NE	ENE	NE	NE	NE	NE	ENE	NE	ENE	ENE	ENE	ENE	E	E	E	E	ESE	ESE	ESE	ESE	ESE	ESE	ESE	ESE	ESE	ESE	ESE	ESE	
63/64	6	5	4	2	3	5	9	6	7	7	9	7	9	8	6	6	6	6	6	6	6	7	7	7	7	7	8	9	10	10	10	11	11	12	12	12	12	
	8	8	5	3	5	6	10	12	12	12	13	12	14	13	11	8	8	8	8	8	9	9	9	10	11	11	12	13	14	14	15	16	16	17	17	17	17	
	W	WNW	WNW	NNW	SE	NW	N	N	E	NE	NE	NE	NE	NE	NE	ENE	NE	ENE	ENE	ENE	ENE	E	E	E	E	ESE	ESE	ESE	ESE	ESE	ESE	ESE	ESE	ESE	ESE	ESE	ESE	
	6	3	4	3	4	3	9	9	8	8	9	6	7	7	6	6	6	6	6	6	6	7	7	7	7	8	8	9	9	10	10	11	11	12	12	12	12	
51/52	13	8	4	3	5	5	9	12	12	11	12	11	11	12	11	8	8	8	8	8	8	9	9	10	11	11	12	13	14	15	15	16	17	17	17	17	17	
	NW	NW	NW	NNW	SE	SW	N	N	NE	NE	NNE	NE	NE	NE	NE	ENE	NE	ENE	ENE	ENE	ENE	E	E	E	E	ESE	ESE	ESE	ESE	ESE	ESE	ESE	ESE	ESE	ESE	ESE	ESE	
37/38	8	6	4	3	3	7	10	9	8	7	6	6	6	6	6	6	6	6	6	6	7	7	7	8	8	9	9	10	10	10	11	11	11	12	12	12	13	12
	12	8	4	3	4	7	13	13	12	11	11	9	10	11	8	8	8	8	8	8	8	9	10	11	11	12	13	14	14	15	15	16	17	17	17	17	17	
	N	N	N	NNW	SSW	SW	N	N	NNE	NE	NE	NE	NNE	NE	ENE	ENE	NE	NE	ENE	ENE	E	E	E	E	E	ESE	ESE	ESE	ESE	ESE	ESE	ESE	ESE	ESE	ESE	ESE	ESE	
	8	7	3	3	3	3	10	9	8	7	7	5	5	6	6	6	6	6	6	7	7	7	8	8	9	9	10	10	10	11	12	12	12	13	13	13	13	
25/26	12	8	4	3	4	3	13	12	12	11	11	8	9	12	8	8	8	8	8	9	9	9	11	11	12	13	14	14	15	15	16	16	17	17	17	17	17	
	N	N	N	NNW	SSW	SW	E	N	NNE	NE	NE	NE	NNE	NE	ENE	ENE	NE	ENE	ENE	ENE	E	E	E	E	E	ESE	ESE	ESE	ESE	ESE	ESE	ESE	ESE	ESE	ESE	ESE	ESE	
11/12	11	7	5	3	4	3	2	8	7	8	7	6	5	7	6	6	6	6	6	7	7	7	8	8	9	9	10	10	10	11	12	13	13	13	14	14	14	14
	16	11	5	3	4	3	2	12	12	13	11	10	9	9	9	13	8	8	8	9	9	10	11	12	11	12	13	14	15	15	16	17	17	17	17	17	17	
	NNW	N	N	NNW	SSE	SSW	E	N	NNE	NE	NE	NE	NE	NE	ENE	ENE	NE	ENE	ENE	ENE	E	E	E	E	E	E	E	E	E	E	E	ESE	ESE	ESE	ESE	ESE	ESE	
	11	8	6	4	3	3	2	6	7	9	7	6	6	5	9	7	7	7	7	7	7	8	9	9	9	10	10	11	11	12	13	13	14	14	14	14	14	
1 & 2 Bravo	16	11	7	4	3	4	2	9	12	14	12	11	11	12	13	8	8	8	9	9	10	10	11	12	11	12	13	14	15	15	16	17	17	17	17	17	17	
	ESE	E	N	N	N	N	SW	N	NNE	NE	NE	NE	NE	NE	NE	ENE	NE	ENE	ENE	ENE	ENE	E	E	E	E	E	E	E	E	E	E	ESE	ESE	ESE	ESE	ESE	ESE	

Houston Pilots: Sun. 12/11/2022

Forecast Discussion

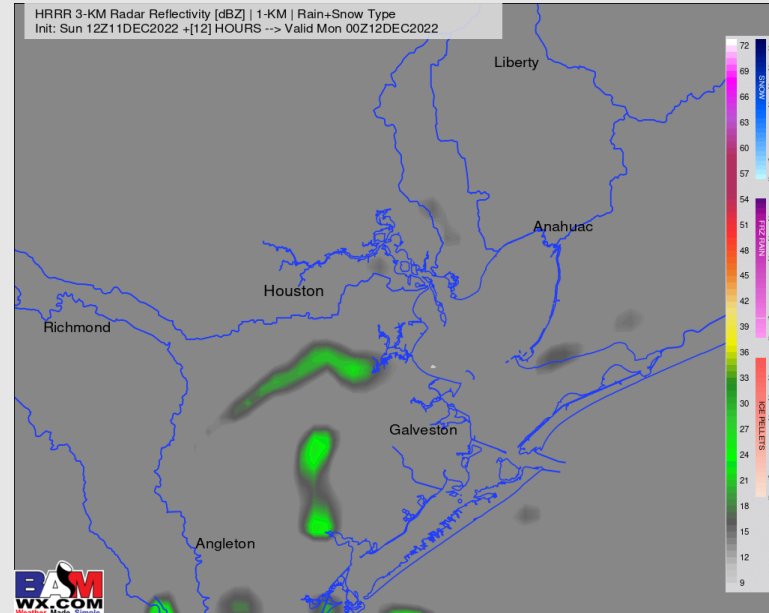
Precip: Expecting showers/ isolated thunderstorms chances of 40% to be possible through the rest of the day with showers becoming more hit and miss the later we get into the evening.

Wind: Variable winds out of the N/NW at 1 – 6 kts today. Anticipating winds to shift out of the NE around 7 PM where they remain for the rest of the day.

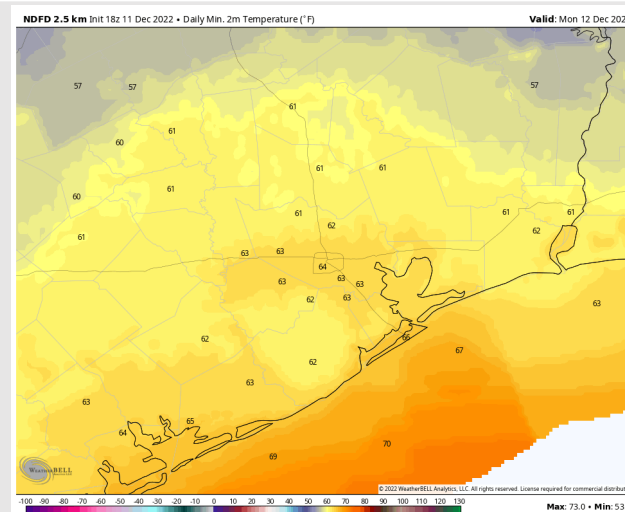
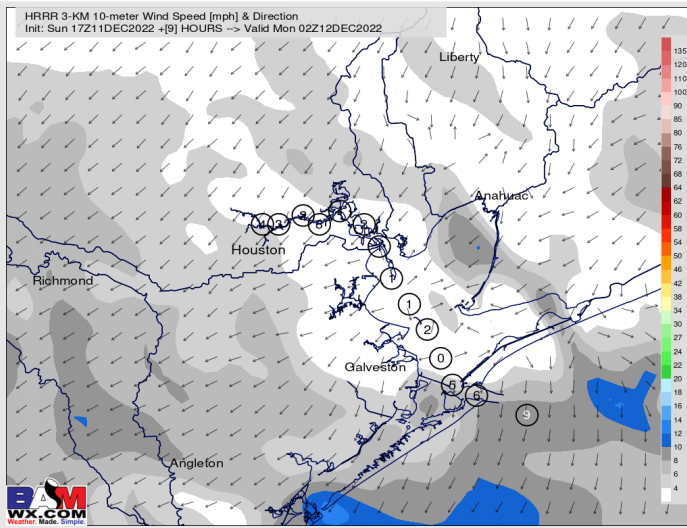
Temps: Low temps Monday morning in the upper 60s F near the Boarding Station and in the low 60s F for all other stations.

Visibility: A threat for patchy dense fog over the bay area will be possible tonight after 7 PM and will last through tomorrow morning.

Precip Forecast: 6 PM CT



**Wind Speed
7 PM CT**



**Low Temps
Monday AM**

Houston Pilots: Mon. 12/12/2022

Forecast Discussion

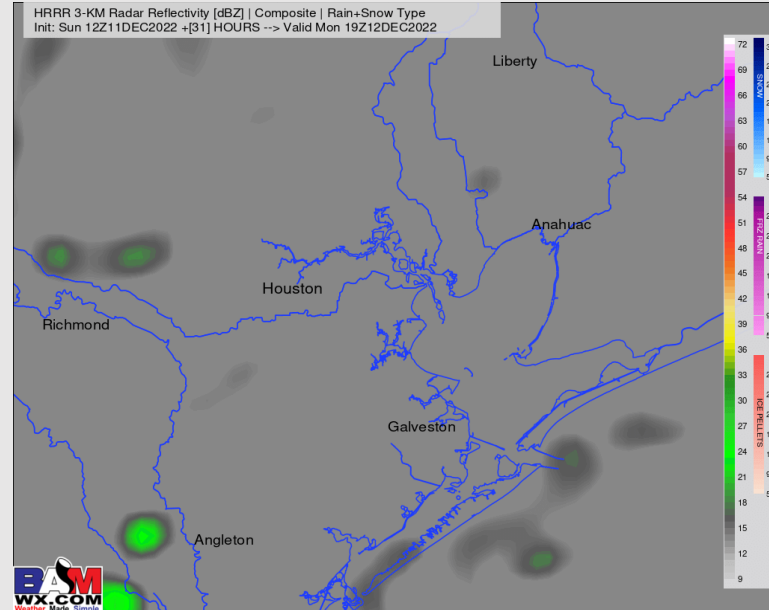
Precip: Anticipating dry conditions for the morning and early afternoon. A 10% chance for a pop-up shower will be possible from 2 PM through 7 PM.

Wind: Winds will begin from the NE in the morning and shift from the East by 9 AM, then finally from the ESE to SE from 1 PM to the remainder of the day. Winds will be at 4 – 9 kts across all stations in the morning, then pickup to 8 – 11 kts by 10 AM. Winds will increase even more S of Morgan's point in the afternoon to 12 – 16 kts by 7 PM and remain as such for the evening.

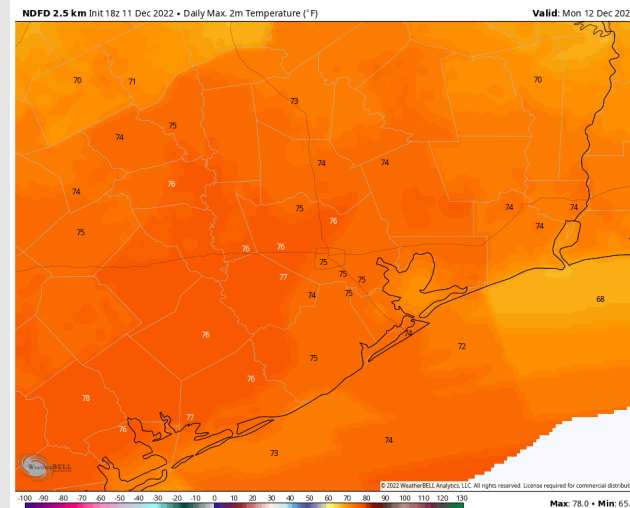
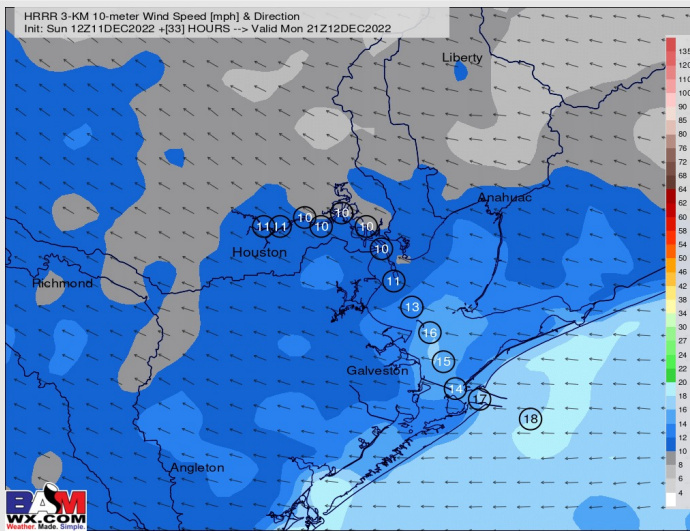
Temps: High temps Monday will be in the mid 70s F north of Morgan's Point and in the low 70s F south of Morgan's Point.

Visibility: A low-end risk for patchy fog will exist in the AM hours mainly over the bay, but low confidence exists at the moment. More information will come in future updates.

Precip Forecast: 1 PM CT



Wind Speed 3 PM CT



High Temps Monday

Houston Pilots: Tue. 12/10/2022

Forecast Discussion

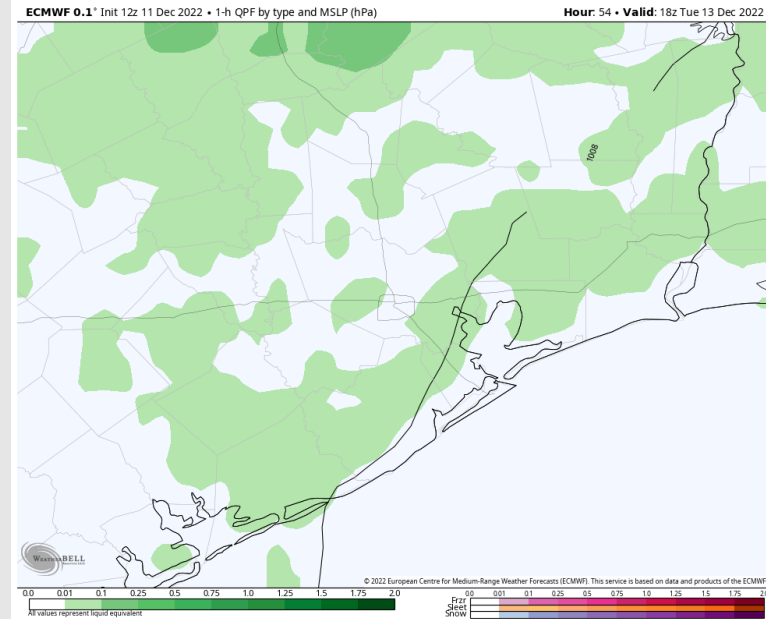
Precip: Favoring dry conditions for the majority of the morning. At around 10 AM, rain showers will enter the region, with greatest chance for precipitation to happen between 3 – 9 PM. Spotty showers could linger through midnight.

Wind: SSE winds in the morning and afternoon will shift from the SW by 6 PM, then from the NNE by midnight. Winds will start out at 9 – 14 kts in the morning then increase to 15 – 22 kts by noon. From the 1 PM – 4 PM timeframe, winds will be the strongest at 17 – 21 kts. At around 8 PM, a front will swing in and calm winds to 3 – 8 kts by 12 AM. **Highest wind gusts will range from 25 – 30 kts from 12 PM – 4 PM.**

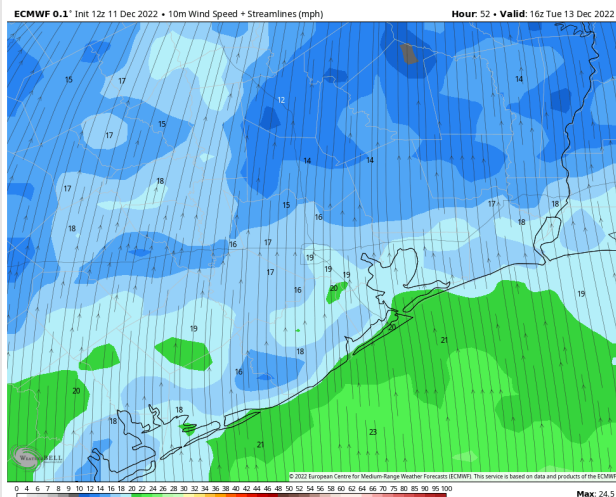
Temps: High temps Tuesday will be in the upper 70s F north of Morgan's Point and in the mid 70s F south of Morgan's Point.

Visibility: Not anticipating any visibility concerns due to the strong winds.

Precip Forecast: 12 PM CT



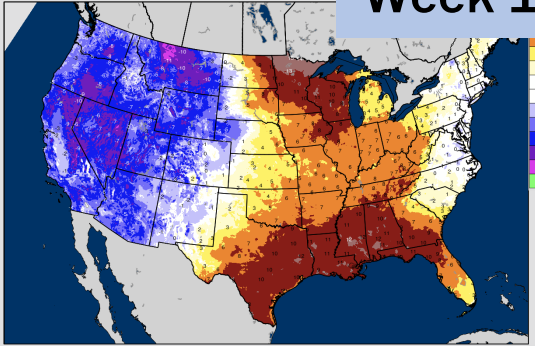
Wind Speed
10 AM CT



Houston Pilots: 12/11/22

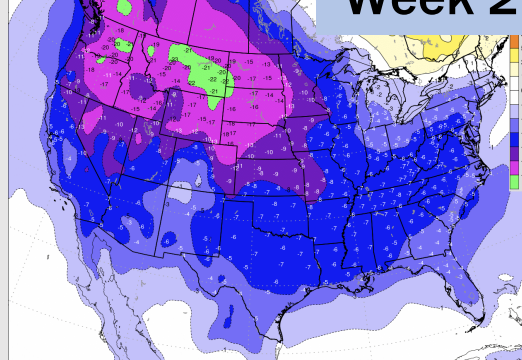
BAMCast Average Temperature Anomaly [°F]
7-DAY AVG for Fri 09DEC2022 thru Thu 15DEC2022 Days 1 to 7

Week 1



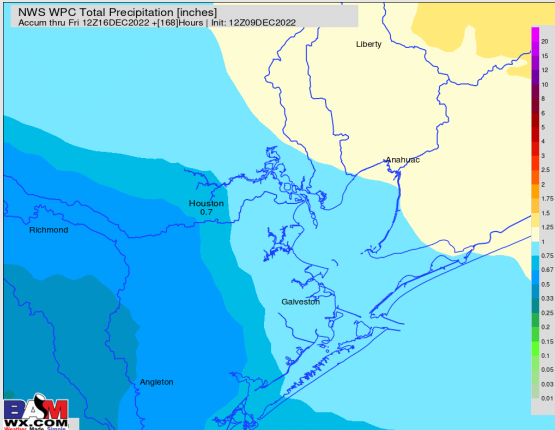
BAM EPS-GEFS 7-Day Average | 2-meter Temperature Anomaly [°F]
Init: Fri 09DEC2022 - (396) HOURS -> Valid Fri 09DEC2022

Week 2

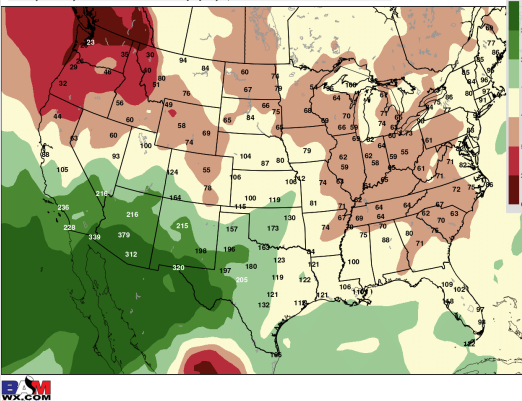


This service is based on data European Centre for Medium-range Weather Forecasts (ECMWF)

NWS WPC Total Precipitation [inches]
Accum thru Fri 12Z16DEC2022 +[168]Hours | Init: 12Z09DEC2022

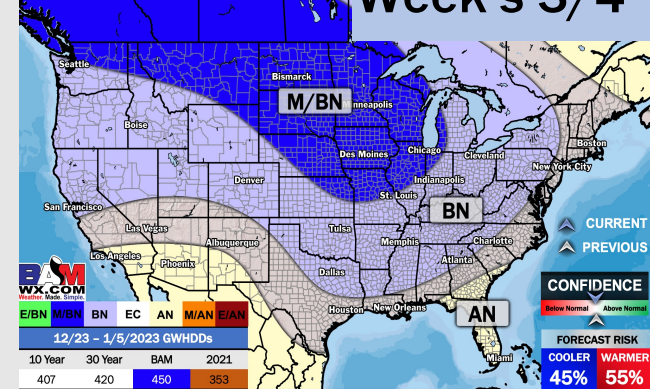


BAM EPS-GEFS+GEPS Precipitation Anomaly [%]
7-Day Anomaly -> Valid Fri 23DEC2022 +[14] Days | Init: 09DEC2022



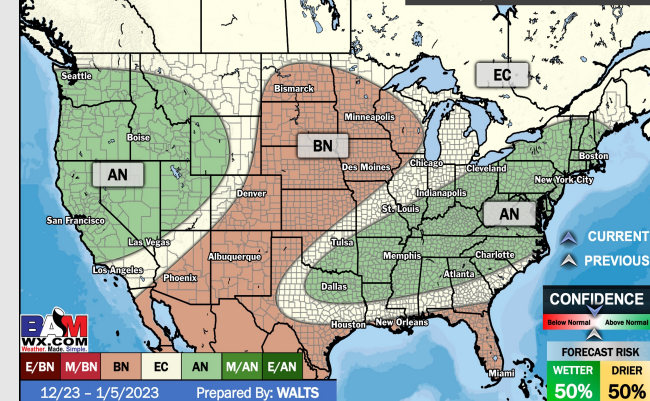
UPDATED: 12/9/22

Week's 3/4



UPDATED: 12/9/22

Week's 3/4 PRECIP DEPARTURE



- Minor, hit and miss light rain chances will be possible over the weekend with better rain chances moving in towards the end of next week. Anticipating temps staying above average.
- Week 2 is expected to be below normal for temperatures and near normal for rain chances for mid December.
- The weeks $\frac{3}{4}$ timeframe looks to feature below normal temperatures and equal chances to below normal for precipitation.