

Houston Pilots Forecast Package



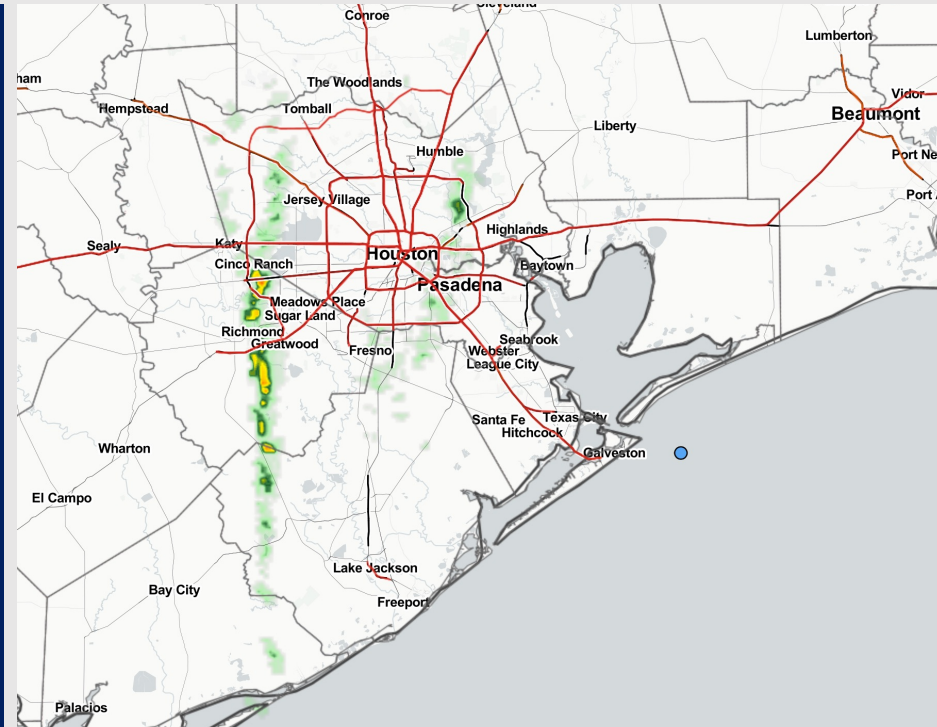
Updated: 1:00 PM CT

Friday, December 2, 2022

Forecaster: Alyssa McClung

Weather Headlines

- Anticipating a 20% chances for showers through the afternoon.
- Anticipating gusty winds of 15 – 18 kts to be possible for all locations through the evening.
- Patchy fog chances / areas of reduced visibility likely to increase from now through the afternoon.
- Favoring widespread, dense fog conditions to begin at 5 PM-CT and continue through Saturday.



Radar/NWS Alerts: 1:00 PM CT



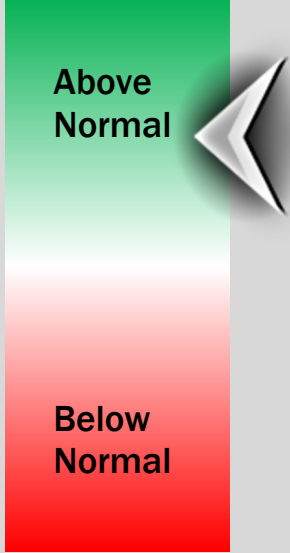
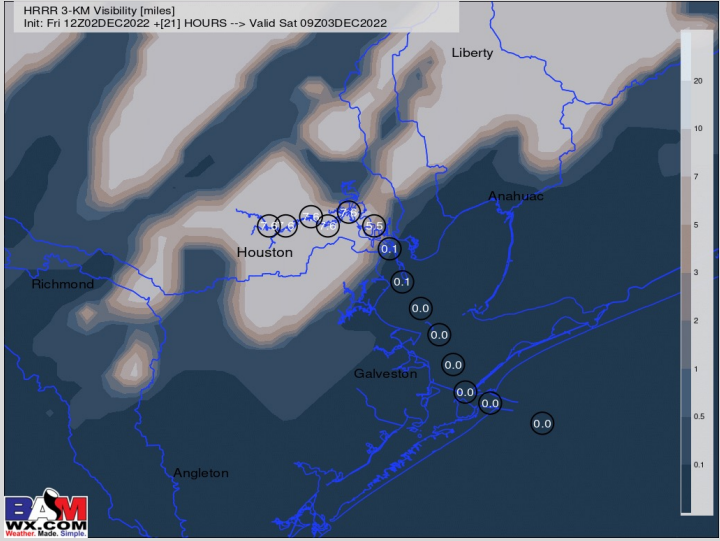
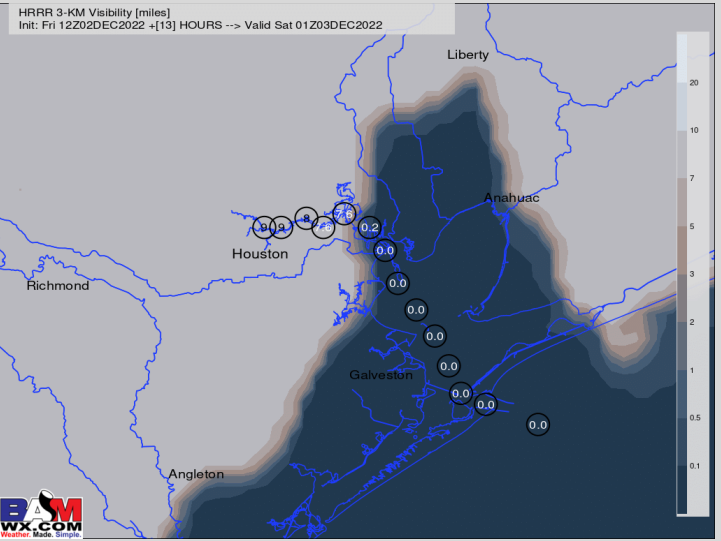
As always, please do not hesitate to reach out to us with any forecast questions via the chat option on the Weather Porthole or our on-call number, **(317)-560-8122** press 1 for forecast questions.

Houston Pilots Visibility Report



7 PM FRI Visibility 3 AM SAT Visibility

Confidence



Reduced Visibility Threat
NOW – 5 AM SUN **High**

- Confidence for dense, widespread sea fog beginning Friday evening and continuing through Saturday remains high.
- Patchy dense fog after this afternoon and is expected to worsen through the evening and continue through Saturday.
- Favoring after 5 PM today through Sunday AM for risk of widespread dense fog with the greatest risk for heavy dense fog after midnight. While visibility concerns may become more patchy during Saturday afternoon (2 – 6 PM), dense fog to likely fill back in for all locations after 6 PM.
- Favoring fog threat to work out of the area between 1 – 5 AM Sunday.
- This threat for fog and less than 0.5 mile visibility exists for all stations.

Houston Pilots Extended Range Visibility Report



Monday 12/5/22

SE Flow will present potential for patchy / areas of dense fog for Monday morning. Slight lower confidence exists at this time in terms of coverage



Tuesday 12/6/22

While lower confidence for this time frame, not favoring visibility concerns for Tuesday AM-PM



Wednesday 12/7/22

Not favoring Visibility concerns at this time for the Houston / Galveston bay area.



Chance for Reduced Visibility

Monday AM	Possible
Monday PM	Possible
Tuesday AM	None
Tuesday PM	None
Wednesday AM	None
Wednesday PM	None

Houston Pilots Visibility Report



Time	Fri 11am	Fri 12pm	Fri 1pm	Fri 2pm	Fri 3pm	Fri 4pm	Fri 5pm	Fri 6pm	Fri 7pm	Fri 8pm	Fri 9pm	Fri 10pm	Fri 11pm	Sat 12am	Sat 1am	Sat 2am	Sat 3am	Sat 4am	Sat 5am	Sat 6am	Sat 7am	Sat 8am	Sat 9am	Sat 10am	Sat 11am	Sat 12pm	Sat 1pm	Sat 2pm	Sat 3pm	Sat 4pm	Sat 5pm	Sat 6pm	Sat 7pm	Sat 8pm	Sat 9pm	Sat 10pm	
610 Bridge	8	10	10	10	10	10	10	10	10	8	7	0.22	7	7	0.34	3	3	1	0.48	0.48	0.24	0.24	1	2	4	6	6	10	10	10	10	10	10	10	7	6	5
Kinder 1	8	10	10	10	10	10	10	10	10	8	7	0.12	7	7	0.26	3	3	1	0.48	0.48	0.24	0.3	2	4	5	6	7	10	10	10	10	10	10	10	7	6	5
Greens Bayou	8	10	10	10	10	10	10	10	10	8	7	0.12	7	7	0.19	3	3	1	0.48	0.48	0.24	0.32	4	5	5	6	7	9	10	10	10	10	10	10	7	6	7
Shell Crude	8	10	10	10	10	10	10	10	10	7	7	0.06	7	7	0.19	3	3	1	0.48	0.48	0.24	0.32	6	6	6	7	7	9	10	10	10	10	10	10	7	6	8
Lynchburg Ferries	8	10	10	10	10	10	10	10	9	7	7	0.06	7	7	0.16	3	3	1	0.48	0.48	0.24	0.32	6	6	6	7	7	9	10	10	10	10	10	10	7	6	8
Exxon 3	7	9	10	10	10	10	10	10	7	7	0.12	0.06	7	0.56	0.16	3	3	1	0.48	0.48	0.24	0.32	6	6	6	7	7	9	10	10	10	10	10	10	7	6	8
Morgans Point	7	9	10	10	10	10	10	9	7	7	0.06	0.06	2	0.25	0.16	1	1	0.66	0.43	0.32	0.24	0.32	6	6	8	8	8	9	9	10	10	10	10	9	8	8	8
75/76	8	9	10	10	10	10	10	8	7	0.08	0.06	0.06	0.2	0.25	0.15	0.53	0.48	0.38	0.24	0.24	0.24	0.32	6	6	7	8	8	8	9	8	8	8	8	7	7	7	8
63/64	8	8	9	10	10	10	8	7	1	0.06	0.06	0.06	0.06	0.12	0.08	0.53	0.38	0.24	0.24	0.24	0.24	0.24	6	6	6	7	6	8	9	8	8	8	8	6	6	6	8
51/52	7	8	8	8	9	9	8	2	0.06	0.06	0.06	0.02	0.06	0.06	0.06	0.29	0.24	0.24	0.24	0.24	0.24	0.24	4	4	5	7	6	7	8	8	8	8	6	5	5	7	
37/38	7	8	8	8	8	8	7	0.08	0.06	0.06	0.06	0	0.06	0.06	0.06	0.29	0.24	0.24	0.24	0.24	0.24	0.24	1	3	4	6	6	6	7	7	7	6	6	5	5	6	
25/26	7	7	8	8	8	8	6	0.06	0.06	0.06	0	0	0.06	0.06	0.06	0.29	0.24	0.24	0.24	0.24	0.24	0.24	0.41	3	3	5	5	6	6	6	6	6	6	6	4	4	4
11/12	7	2	7	7	5	2	0.06	0.02	0	0.02	0	0	0.05	0.06	0.02	0.29	0.24	0.24	0.24	0.24	0.24	0.24	0.41	2	3	5	5	6	6	6	6	7	6	4	4	2	
1 & 2 Bravo	0.13	0.53	0.41	0.23	0.12	0.07	0.02	0	0	0	0	0	0.02	0.06	0	0.29	0.22	0.22	0.22	0.22	0.22	0.22	0.46	1	2	3	4	4	5	5	5	5	4	3	3	2	

Please check slide above for official thinking as model data shown may be slow with fog.

Houston Pilots Wind Report



Example

Sustained wind 13 Knots
 Gusts 18 Knots
 Wind from the N

WS: 13
 G:18
 N

Time Knots	Thu 1pm	Thu 2pm	Thu 3pm	Thu 4pm	Thu 5pm	Thu 6pm	Thu 7pm	Thu 8pm	Thu 9pm	Thu 10pm	Thu 11pm	Fri 12am	Fri 1am	Fri 2am	Fri 3am	Fri 4am	Fri 5am	Fri 6am	Fri 7am	Fri 8am	Fri 9am	Fri 10am	Fri 11am	Fri 12pm	Fri 1pm	Fri 2pm	Fri 3pm	Fri 4pm	Fri 5pm	Fri 6pm	Fri 7pm	Fri 8pm	Fri 9pm	Fri 10pm	Fri 11pm	Sat 12am	
610 Bridge	6 E	6 E	5 E	5 E	5 E	4 E	4 E	5 E	7 E	6 E	5 E	5 E	5 E	3 ENE	3 ENE	5 E	6 E	6 E	6 E	7 E	8 E	8 E	9 E	9 E	9 E	9 E	9 E	8 E	6 E	6 E	5 E	4 E	4 E	4 E	4 E		
Kinder 1	5 E	6 E	5 E	5 E	4 E	4 E	4 E	5 E	7 E	6 E	5 E	5 E	4 E	3 ENE	3 ENE	5 E	6 E	6 E	6 E	7 E	8 E	8 E	9 E	9 E	9 E	9 E	9 E	8 E	6 E	5 E	4 E	3 E	3 E	3 E	3 E		
Greens Bayou	5 E	5 E	5 E	4 E	4 E	3 E	3 E	4 E	6 E	6 E	5 E	4 E	4 E	4 E	3 ENE	3 ENE	5 E	6 E	6 E	6 E	7 E	8 E	8 E	9 E	9 E	9 E	9 E	8 E	6 E	5 E	4 E	3 E	3 E	3 E	3 E		
Shell Crude	5 E	5 E	5 E	4 E	4 E	3 E	3 E	4 E	6 E	6 E	5 E	4 E	4 E	4 E	3 ENE	3 ENE	5 E	6 E	6 E	6 E	7 E	8 E	9 E	9 E	9 E	10 E	10 E	9 E	8 E	7 E	6 E	5 E	4 E	3 E	3 E	3 E	
Lynchburg Ferries	4 E	5 E	4 E	3 E	2 E	3 E	3 E	4 E	6 E	5 E	4 E	4 E	4 E	4 E	3 ENE	3 ENE	5 E	6 E	6 E	6 E	7 E	8 E	9 E	9 E	9 E	10 E	10 E	10 E	9 E	8 E	7 E	6 E	5 E	4 E	3 E	3 E	
Exxon 3	4 E	5 E	4 E	3 E	2 E	3 E	4 E	4 E	6 E	5 E	4 E	4 E	4 E	4 E	3 ENE	3 ENE	5 E	6 E	6 E	6 E	7 E	8 E	9 E	10 E	10 E	10 E	10 E	9 E	8 E	7 E	6 E	5 E	4 E	3 E	3 E	3 E	
Morgans Point	6 E	6 E	5 E	4 E	4 E	6 E	7 E	7 E	8 E	8 E	7 E	7 E	7 E	7 E	6 E	7 E	7 E	8 E	7 E	8 E	9 E	10 E	10 E	10 E	10 E	10 E	10 E	9 E	8 E	7 E	6 E	5 E	5 E	5 E	5 E	4 E	
75/76	9 ENE	8 ENE	6 ENE	6 ENE	8 ENE	10 ENE	10 ENE	11 ENE	12 ENE	12 ENE	11 ENE	11 ENE	9 ENE	10 ENE	8 ENE	9 ENE	9 ENE	9 ENE	10 ENE	10 ENE	10 ENE	11 ENE	11 ENE	11 ENE	11 ENE	11 ENE	10 ENE	9 ENE	8 ENE	7 ENE	6 ENE	6 ENE	6 ENE	6 ENE	6 ENE	6 ENE	
63/64	10 ENE	9 ENE	8 ENE	8 ENE	10 ENE	11 ENE	12 ENE	12 ENE	12 ENE	12 ENE	11 ENE	11 ENE	9 ENE	10 ENE	9 ENE	10 ENE	10 ENE	10 ENE	10 ENE	10 ENE	11 ENE	11 ENE	11 ENE	12 ENE	12 ENE	11 ENE	10 ENE	9 ENE	8 ENE	8 ENE	7 ENE	7 ENE	7 ENE	7 ENE	6 ENE	6 ENE	6 ENE
51/52	12 ENE	12 ENE	11 ENE	10 ENE	11 ENE	12 ENE	12 ENE	11 ENE	13 ENE	12 ENE	11 ENE	10 ENE	9 ENE	9 ENE	9 ENE	10 ENE	10 ENE	10 ENE	10 ENE	10 ENE	11 ENE	11 ENE	12 ENE	12 ENE	12 ENE	11 ENE	10 ENE	9 ENE	8 ENE	8 ENE	7 ENE	7 ENE	7 ENE	7 ENE	6 ENE	6 ENE	6 ENE
37/38	13 ENE	13 ENE	12 ENE	11 ENE	11 ENE	12 ENE	11 ENE	11 ENE	13 ENE	12 ENE	11 ENE	10 ENE	9 ENE	8 ENE	8 ENE	10 ENE	11 ENE	11 ENE	11 ENE	11 ENE	11 ENE	12 ENE	12 ENE	12 ENE	12 ENE	11 ENE	10 ENE	9 ENE	8 ENE	8 ENE	7 ENE	7 ENE	7 ENE	7 ENE	6 ENE	6 ENE	6 ENE
25/26	13 ENE	13 ENE	13 ENE	12 ENE	11 ENE	11 ENE	12 ENE	11 ENE	12 ENE	12 ENE	11 ENE	11 ENE	10 ENE	9 ENE	9 ENE	10 ENE	10 ENE	10 ENE	10 ENE	10 ENE	11 ENE	11 ENE	12 ENE	12 ENE	12 ENE	11 ENE	10 ENE	9 ENE	8 ENE	8 ENE	7 ENE	7 ENE	7 ENE	7 ENE	6 ENE	6 ENE	6 ENE
11/12	14 ENE	14 ENE	14 ENE	13 ENE	12 ENE	12 ENE	13 ENE	13 ENE	13 ENE	14 ENE	13 ENE	13 ENE	11 ENE	11 ENE	10 ENE	11 ENE	11 ENE	11 ENE	11 ENE	11 ENE	12 ENE	12 ENE	12 ENE	12 ENE	11 ENE	10 ENE	9 ENE	8 ENE	8 ENE	7 ENE	7 ENE	7 ENE	7 ENE	6 ENE	6 ENE	6 ENE	
1 & 2 Bravo	15 ENE	16 ENE	16 ENE	15 ENE	15 ENE	15 ENE	17 ENE	17 ENE	16 ENE	17 ENE	16 ENE	16 ENE	14 ENE	14 ENE	13 ENE	14 ENE	13 ENE	12 ENE	12 ENE	12 ENE	13 ENE	13 ENE	13 ENE	12 ENE	11 ENE	10 ENE	10 ENE	10 ENE	9 ENE	9 ENE	9 ENE	8 ENE	8 ENE	8 ENE	8 ENE	8 ENE	8 ENE

See slides below for official thoughts on winds.

Houston Pilots: Fri. 12/2/2022



Forecast Discussion

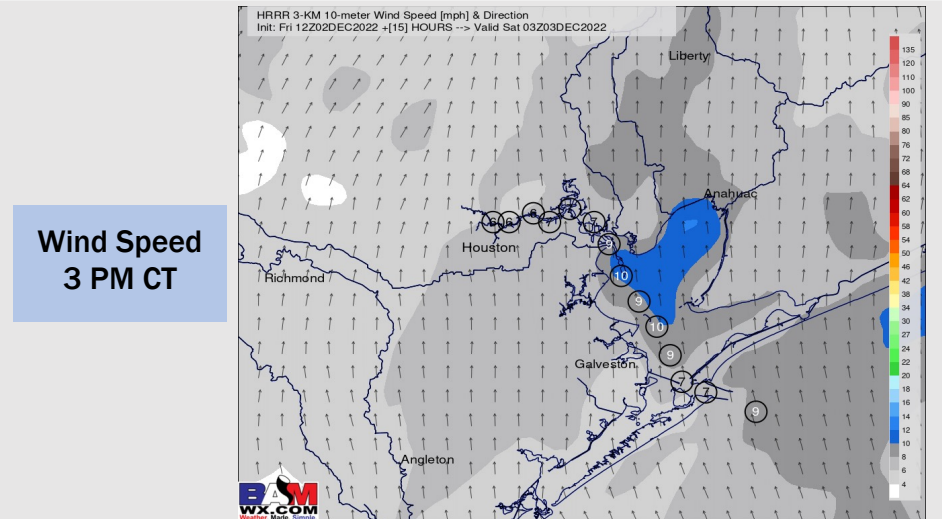
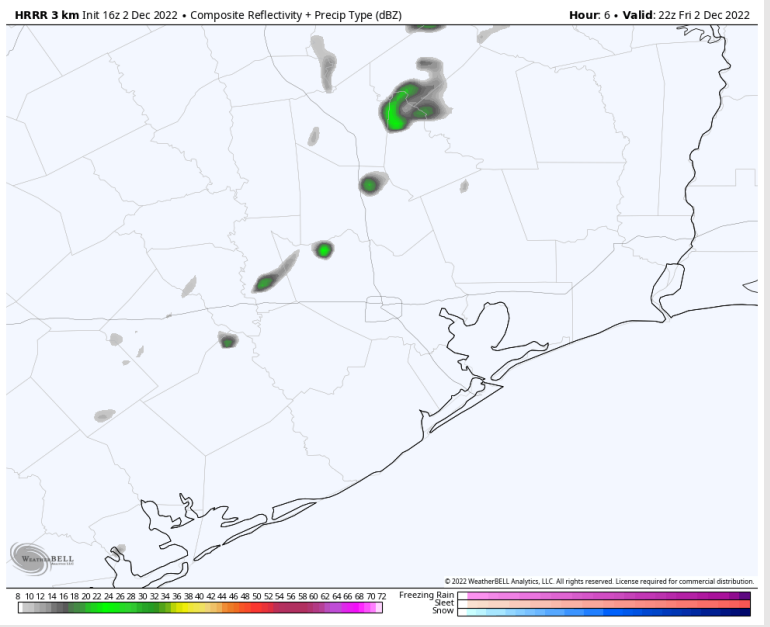
Precip: Anticipating a slight (20%) chance of showers to be possible until 7 PM.

Wind: Sustained winds out of the SE, gradually shifting out of the SSE as the night progresses. Winds 10 – 15 kts for all stations until 5 PM, then weaken a tad to 5 – 10 kts.

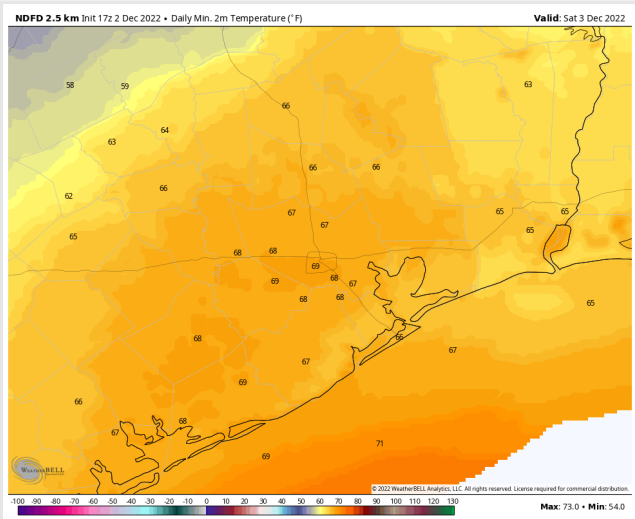
Temps: Low temperatures Saturday Morning in the upper 60s F for all stations.

Visibility: Light drizzle/misty conditions could reduced visibility through 5 PM as winds shift out of the SE/SSE
Higher confidence for widespread dense fog to be possible Friday after 5PM. Favoring the greatest threat to come closer to Midnight going into Saturday. (SEE VISIBILITY SLIDE)

Precip Forecast: 11 AM CT



Wind Speed
3 PM CT



High Temps
Friday

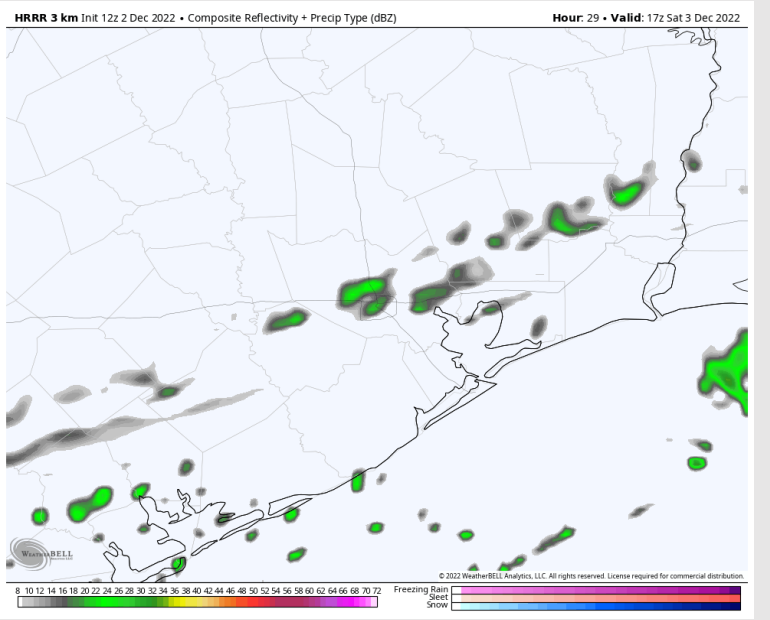
Houston Pilots: sat. 12/3/2022



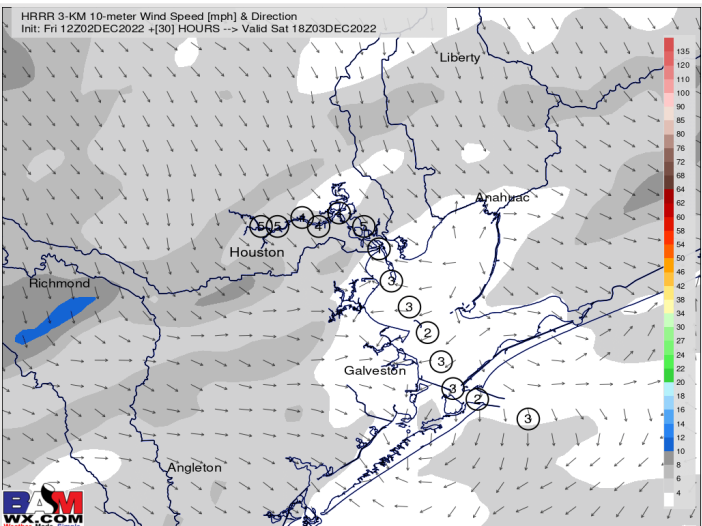
Forecast Discussion

- Precip:** Anticipating a 40% chance of light showers beginning at 3 AM and continuing through 5 PM as a cold front slowly passes to the southeast.
- Wind:** Sustained winds out of the SW at 8 – 12 kts will be possible through 5AM. After 5 AM, winds to become variable at 3 - 8 kts through most of the evening until 9 PM then winds shift more so out of the NE.
- Temps:** High temps expected to reach the lower to mid 70's.
- Visibility:** Areas of widespread dense fog will carry over from Friday night. The fog threat will continue to be possible throughout the day into Sunday AM.

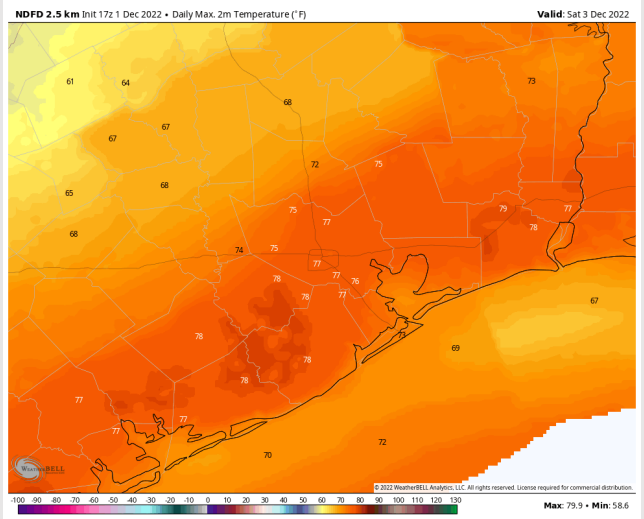
Precip Forecast: 9 AM CT



Wind Speed
12 PM CT



High Temps
Saturday



Houston Pilots: Sun. 12/4/2022



Forecast Discussion

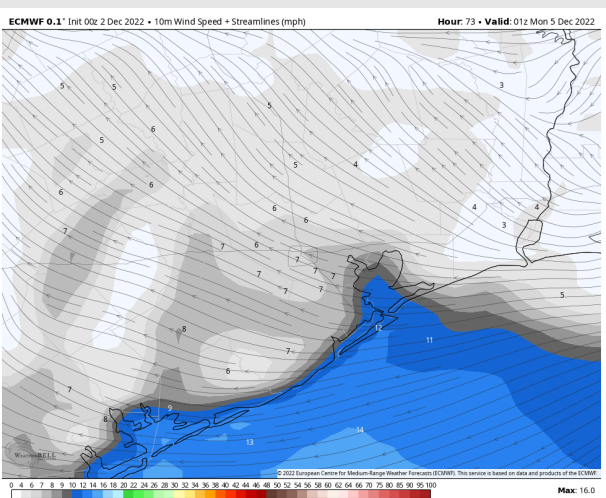
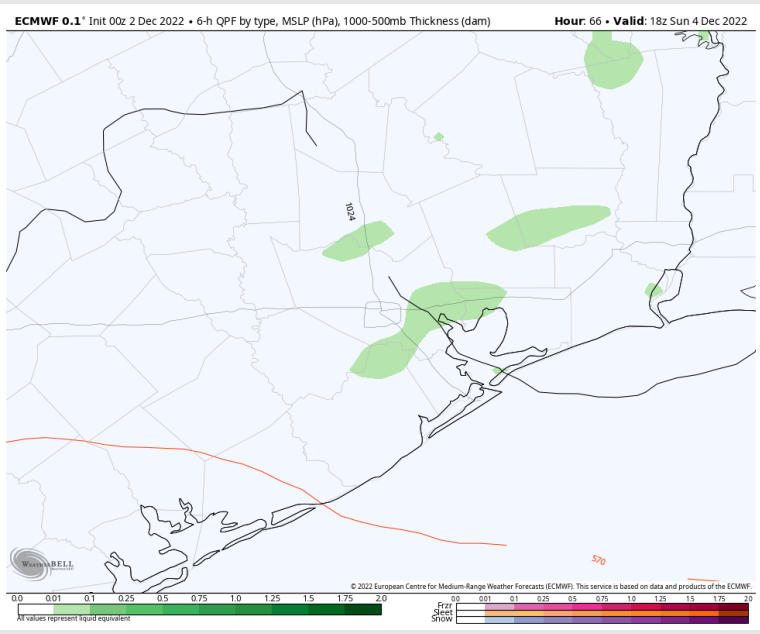
Precip: Anticipating dry conditions for most of the day, with sprinkle chances from 11 AM – 2 PM.

Wind: Sustained winds out of the ENE/E through 2PM at 4 – 8 kts, 6 – 10 kts near Alpha / Bravo stations. After 2PM, winds shift to out of the SE through the remainder of the evening, with winds of 8 – 14 kts S of Morgan’s Point, 6 – 10 kts N of Morgan’s Point.

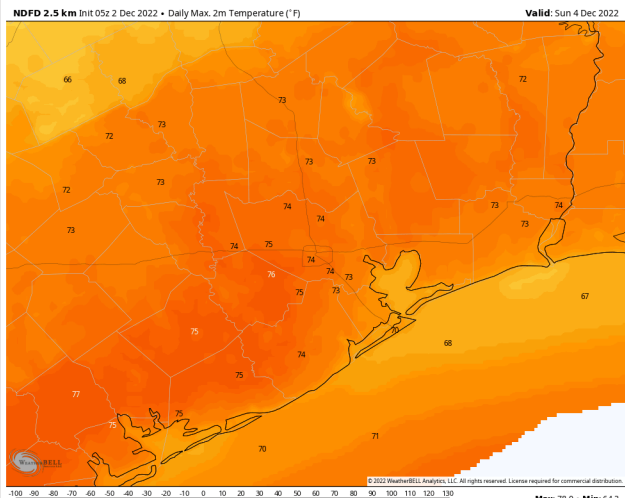
Temps: High temps Sunday in the lower to mid 70’s for all locations.

Visibility: Areas of patchy dense fog will be possible through 5 AM-CT. As winds shift out of the SE once again Sunday night, areas of dense fog will once again be possible through Monday AM

Precip Forecast: 12 PM CT

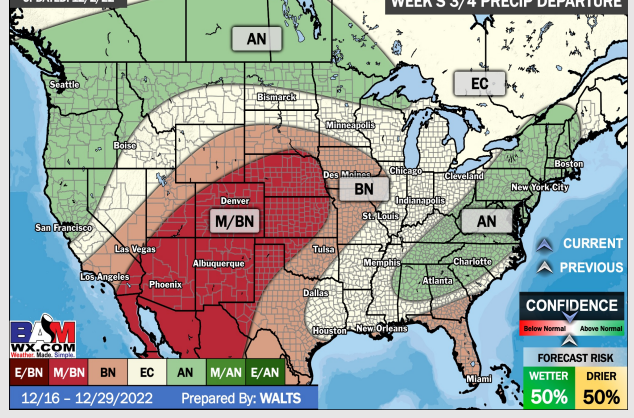
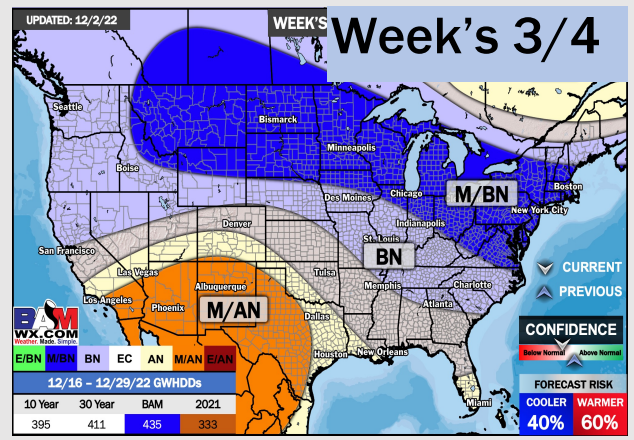
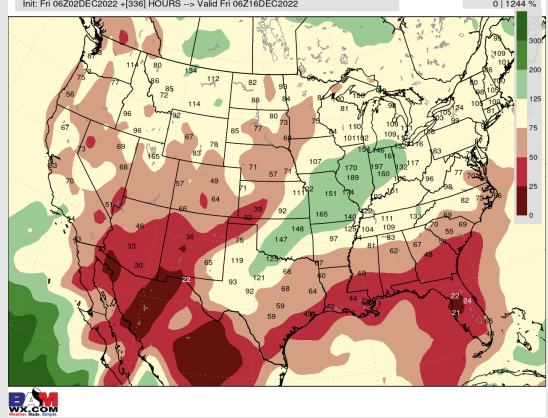
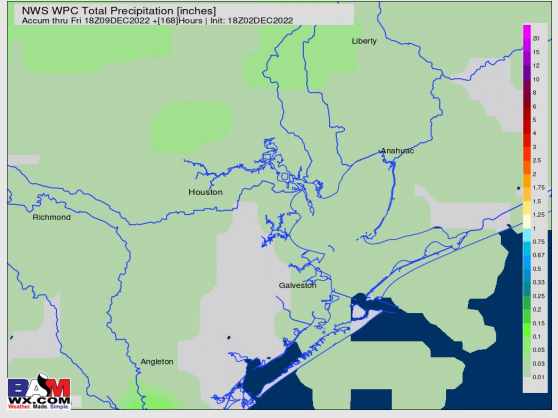
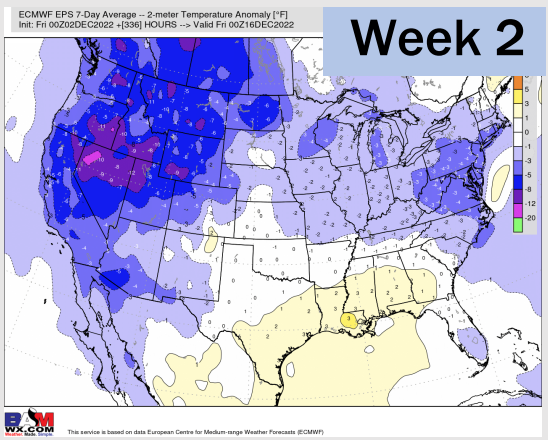
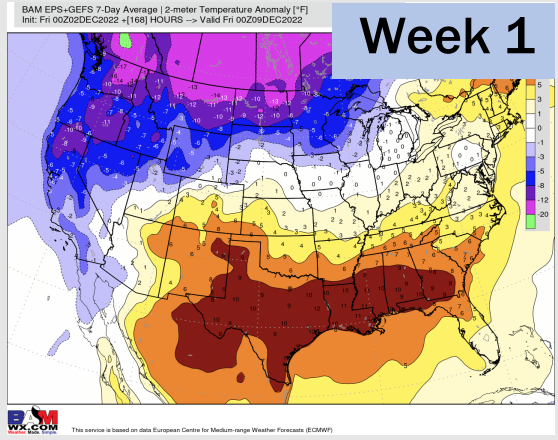


Wind Speed
7 PM CT



High Temps
Sunday AM

Houston Pilots: 12/2/22



- Very low rain chances this evening with rain chances to follow through Tuesday AM. Week 1 temperatures to be above normal.
- Week 2 is expected to be slightly above normal for temperatures and below normal for rain chances for mid December.
- The weeks 3/4 timeframe looks to feature above normal temperatures and equal chances for precipitation.