

Houston Pilots Forecast Package



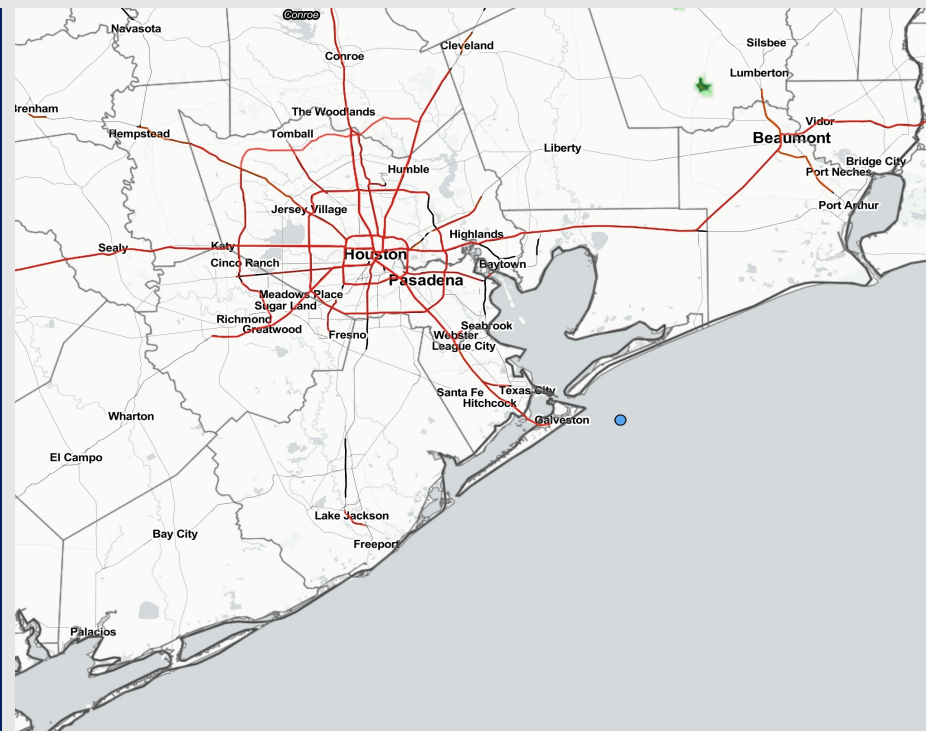
Updated: 1:30 PM CT

Friday, December 9, 2022

Forecaster: Alyssa McClung

Weather Headlines

- Hit and miss pockets of drizzle will be possible the next few days with better shower / storm chances moving in Saturday PM.
- Winds will generally stay within the 5 – 15 kt range over the next two days. Winds will be generally out of the ESE/SE and continue at this direction tomorrow. Sunday PM winds are expected to shift out of the NW.
- **Fog chances will be at play over the next 48 hours. Please check out the slides below where we try to nail down timing as best as possible.**



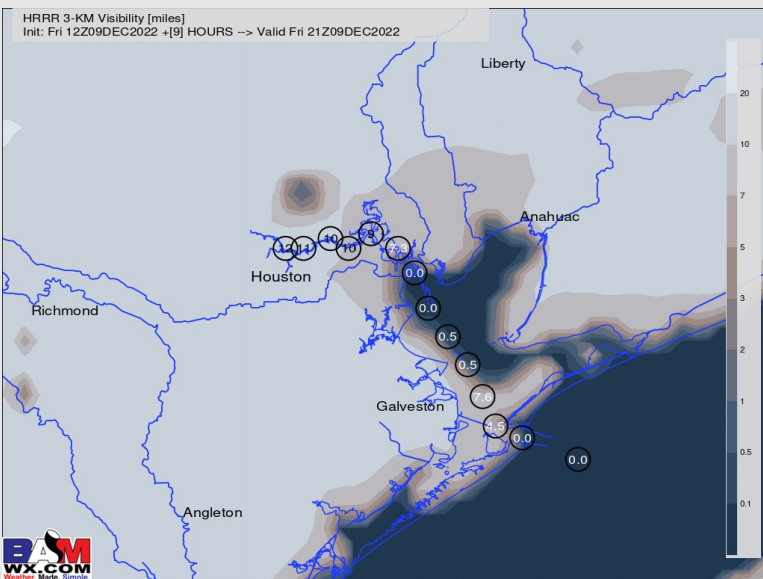
Radar/NWS Alerts: 1:30 PM CT



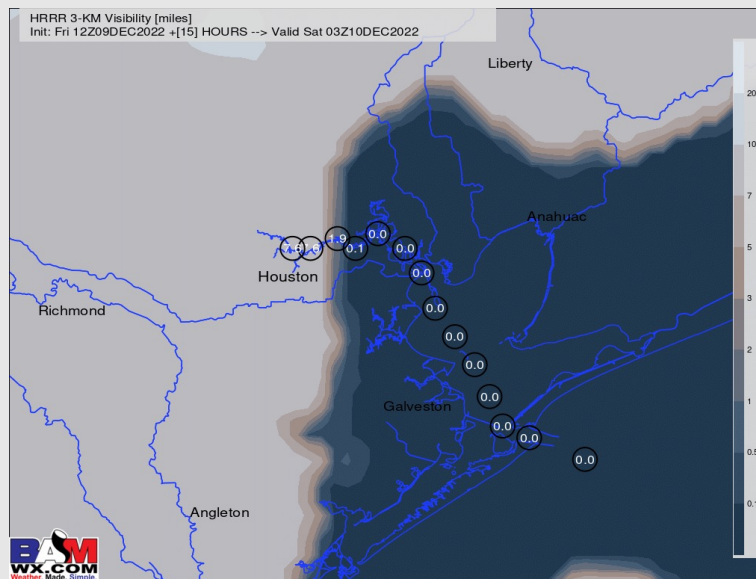
As always, please do not hesitate to reach out to us with any forecast questions via the chat option on the Weather Porthole or our on-call number, **(317)-560-8122** press 1 for forecast questions.

Houston Pilots Visibility Report

3 PM CT FRI VISIBILITY



9 PM CT FRI VISIBILITY



Confidence

Above
Normal

Below
Normal

Reduced Visibility Threat

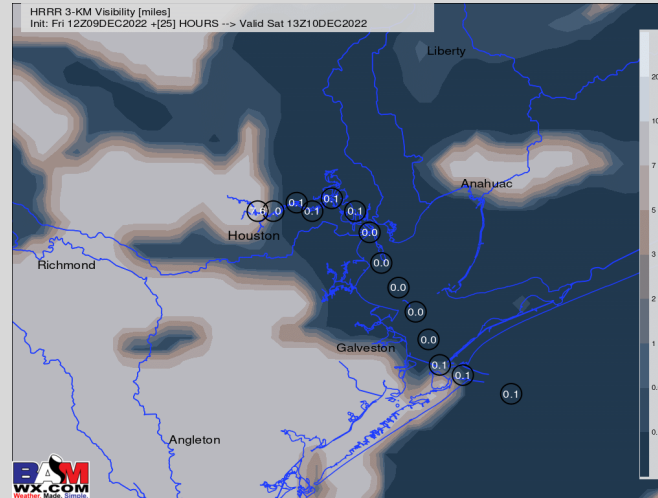
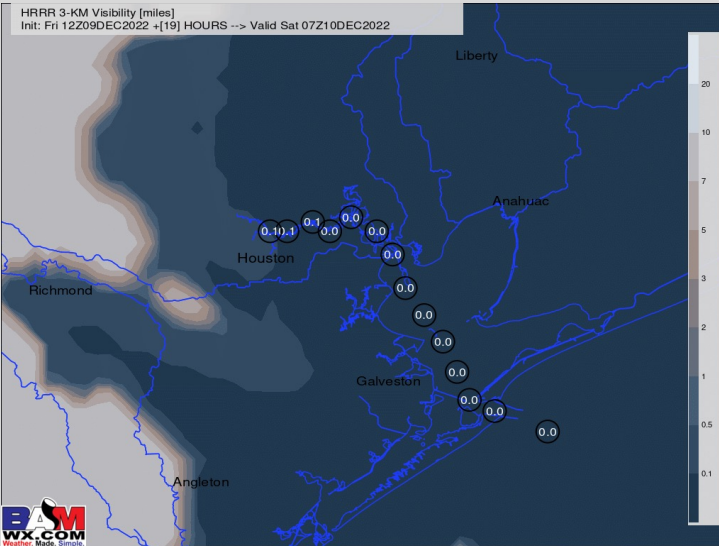
NOW – 12 AM SAT

Medium -
High

- Anticipating areas of patchy /patchy dense fog to continue to be a risk until 4 PM, increasing in patchiness for stations South of Morgan's Point. The Boarding Station will be at the greatest risk for seeing continued dense fog this evening and through tomorrow.
- After 4 PM, patchy fog will start to become more widespread over the area. This patchy fog will then gradually expand, moving in towards stations north of Morgan's Point by 9 PM. Widespread dense fog will continue to impact all stations thereafter, with the greatest risk moving in after 12 AM. (View next slide for Saturday fog risk)
- Reduced visibility below 0.5 mile will be a risk associated with this fog potential.

The image contains two logos. On the left is the logo for BAM WX.COM, featuring the letters 'BAM' in a stylized font with a white 'A' and a black outline, followed by 'WX.COM' in black and 'Weather. Made. Simple.' in blue and red below it. On the right is the logo for Houston Pilots, featuring a large red 'H' with a black outline and the text 'Houston Pilots' in white above it.

Confidence



**Below
Normal**

Medium - High

- Fridays fog will likely carry over into Saturday with the greatest risk for dense fog being between 12 AM and 7 AM.
- Favoring fog to begin to move south of Morgan's Point and become more patchy after 7 AM Saturday, and gradually clearing out of the area around 9/10 AM. The Boarding Station will still be at risk for continue dense fog.
- Anticipate the risk for patchy dense / dense fog to return in the evening and continue into Sunday Morning before winds shift out of the NE around 9/10 AM.
- Visibility could be reduced to 0.5 miles or less with these fog threats.
- Overall, confidence is low for exact timing and coverage for Saturdays evenings fog risk, as well as the timing for winds to shift out of the NE SUN.

Houston Pilots Extended Range Visibility Report



Monday 12/12/22

Lower confidence on exact details of fog potential into Monday AM as guidance is pretty spread on how far south a weak front can work. As of now, we are going to favor at least the chance for fog.



Wednesday 12/14/22

Anticipating winds to shift to out of the NW Wednesday thanks to a passing cold front. This will (finally!) bring an end to fog potential.



Tuesday 12/13/22

Anticipating winds to remain out of the SW pending an approaching front. Wind speeds may have a big factor on fog formation as they will definitely be on the edge of being “too strong” for fog (something that needs fine tuned). The signal for widespread fog both Monday and Tuesday is not nearly as strong as it was over the past several days, thus leading to some lower confidence.



Chance for Reduced Visibility	
Monday AM	Possible
Monday PM	Unlikely
Tuesday AM	Possible
Tuesday PM	Possible
Wednesday AM	Unlikely
Wednesday PM	Unlikely

Houston Pilots Visibility Report



Time	Fri 12pm	Fri 1pm	Fri 2pm	Fri 3pm	Fri 4pm	Fri 5pm	Fri 6pm	Fri 7pm	Fri 8pm	Fri 9pm	Fri 10pm	Fri 11pm	Sat 12am	Sat 1am	Sat 2am	Sat 3am	Sat 4am	Sat 5am	Sat 6am	Sat 7am	Sat 8am	Sat 9am	Sat 10am	Sat 11am	Sat 12pm	Sat 1pm	Sat 2pm	Sat 3pm	Sat 4pm	Sat 5pm	Sat 6pm	Sat 7pm	Sat 8pm	Sat 9pm	Sat 10pm	Sat 11pm
610 Bridge	10	10	10	10	10	10	10	10	10	10	10	10	1	0.53	0.42	0.29	0.24	0.24	0.24	0.24	0.24	3	6	10	10	10	10	9	10	10	10	9	6	5	4	2
Kinder 1	10	10	10	10	10	10	10	10	10	10	10	10	0.95	0.53	0.42	0.29	0.24	0.24	0.24	0.24	0.24	3	6	10	10	10	10	9	10	10	10	9	6	5	4	2
Greens Bayou	10	10	10	10	10	10	10	10	10	10	10	10	0.9	0.53	0.39	0.29	0.24	0.24	0.24	0.24	0.24	2	7	10	10	10	10	9	10	10	10	9	6	6	6	2
Shell Crude	10	10	10	10	10	10	10	10	10	10	10	9	0.78	0.53	0.3	0.29	0.24	0.24	0.24	0.24	0.24	2	7	10	10	10	10	9	10	10	10	9	7	8	8	2
Lynchburg Ferries	10	10	10	10	10	10	10	10	10	10	10	3	0.77	0.53	0.29	0.29	0.24	0.24	0.24	0.24	0.24	2	7	9	10	10	10	8	9	10	10	8	7	8	8	2
Exxon 3	10	10	10	10	10	10	10	10	10	9	5	0.77	0.6	0.32	0.29	0.29	0.24	0.24	0.24	0.24	0.24	2	7	9	10	10	10	8	9	10	10	8	7	8	8	3
Morgans Point	10	10	10	10	10	10	10	10	10	7	4	0.77	0.53	0.35	0.29	0.29	0.24	0.24	0.24	0.87	1	4	8	9	10	10	10	9	10	10	10	9	7	8	8	5
75/76	10	10	10	10	10	10	10	10	10	6	5	3	1	0.53	0.29	0.29	0.24	0.24	0.24	0.56	1	3	7	9	10	10	10	9	10	10	10	9	7	8	8	6
63/64	10	10	10	10	10	10	10	10	9	6	4	3	1	0.64	0.48	0.38	0.33	0.33	0.24	0.33	0.84	3	6	9	10	10	9	9	9	10	10	9	7	8	8	7
51/52	10	10	10	10	10	10	10	10	7	6	4	2	1	0.63	0.63	0.46	0.41	0.41	0.24	0.24	0.24	4	6	8	8	9	9	7	8	9	9	8	7	8	8	7
37/38	9	10	10	10	10	10	10	9	6	5	4	2	0.97	0.29	0.29	0.29	0.24	0.24	0.24	0.24	0.24	2	6	7	7	8	8	7	7	9	9	7	7	8	7	7
25/26	6	9	10	10	10	10	10	8	6	6	3	2	0.96	0.38	0.29	0.53	0.24	0.24	0.24	0.24	0.99	3	7	7	7	7	7	7	7	7	7	7	7	8	8	7
11/12	6	7	10	10	10	10	10	7	6	6	3	3	0.53	0.85	0.29	0.53	0.24	0.24	0.24	0.24	1	4	7	7	7	7	7	7	7	7	7	7	7	8	8	7
1 & 2 Bravo	5	5	2	4	3	7	6	5	4	4	1	1	0.79	0.53	0.29	0.29	0.2	0.18	0.22	0.22	3	6	7	7	7	7	7	7	7	7	7	7	7	8	8	7

Please check slides above for official thinking on fog as the chart is likely not perfect.

The image contains two logos. On the left is the logo for BAM WX.COM, featuring the letters 'BAM' in a stylized font with a white 'A' and a black and white swirl, followed by 'WX.COM' in black and 'Weather. Made. Simple.' in blue and red text below it. On the right is the logo for Houston Pilots, featuring a large red 'H' with the text 'Houston Pilots' in white serif font to its right.

Example

**Below
Normal**

Wind from the N

WS: 13
G:18
N

[illegible]

Houston Pilots: Fri. 12/9/2022

Forecast Discussion

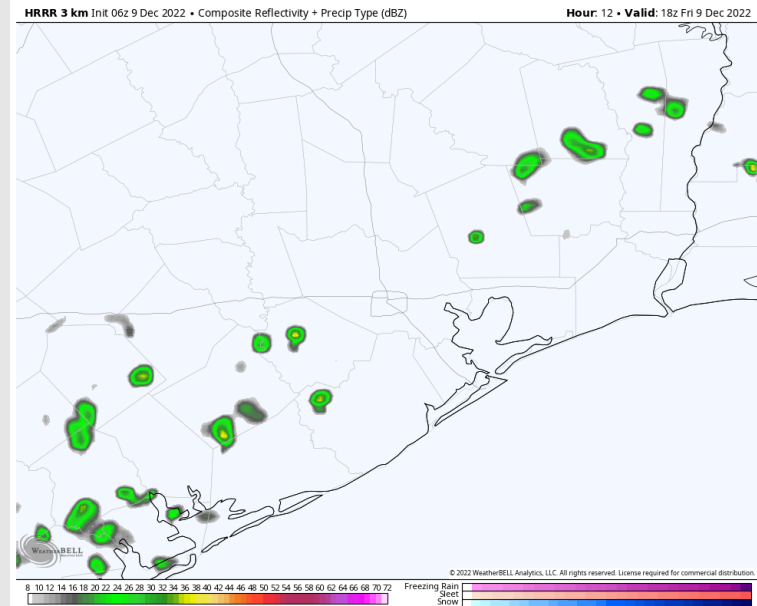
Precip: A 20% chance for scattered showers will continue until 4 PM timeframe Friday. Pockets of rain expected to be hit and miss and rather light in terms on intensity, with higher intensity rains staying north and west of HOU.

Wind: Winds will be out of the SE for almost the entire day. Winds will be at 3-8 kts until 12 PM. After 12 PM, winds will increase to 6-11 kts and remain here throughout the PM hours on Friday.

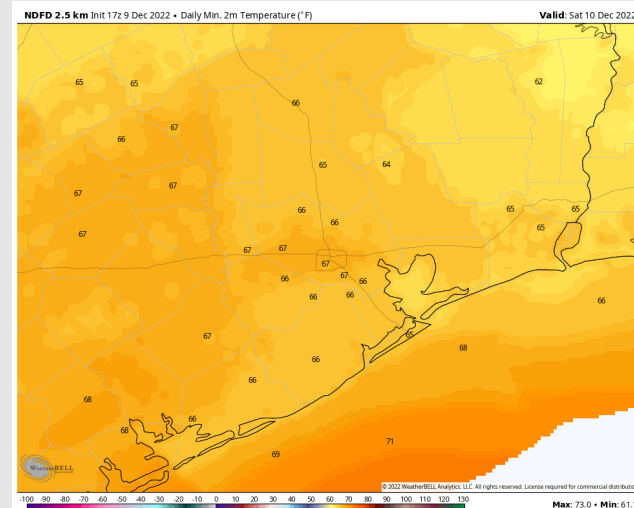
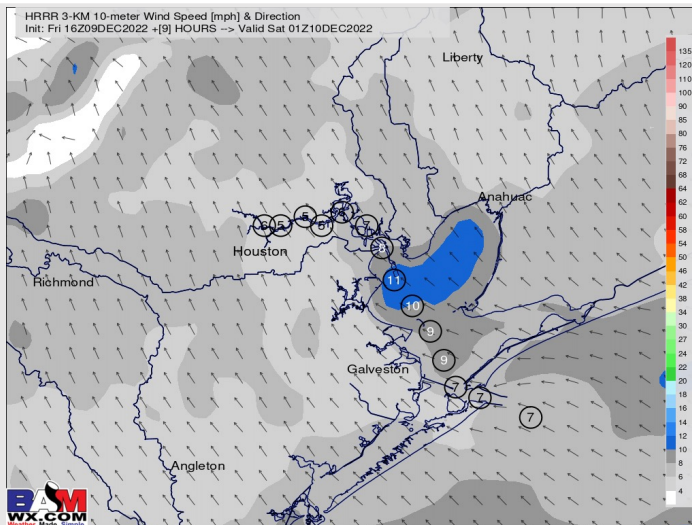
Temps: Low temps Saturday AM in the mid to upper 60s F for all stations.

Visibility: Patchy / patchy dense fog will be possible this evening and will likely continue into Saturday. More details in the fog slide above.

Precip Forecast: 12 PM CT



Wind Speed
7 PM CT



High Temps
Friday

Houston Pilots: sat. 12/10/2022

Forecast Discussion

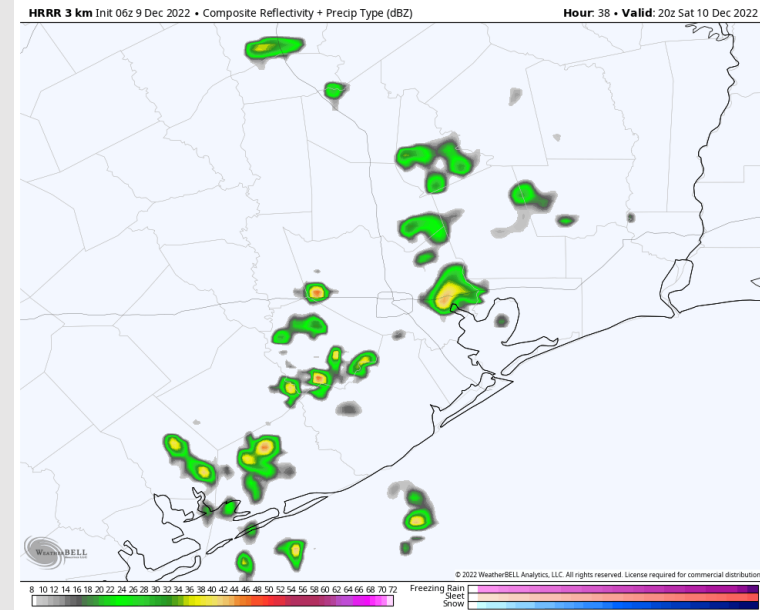
Precip: Dry conditions until 12 PM on Saturday. From 12 - 2 PM, 20-30% chance of scattered showers/storms around the area, with coverage increasing to 70-80% after 2 - 6 PM and continuing throughout the rest of the evening.

Wind: Sustained winds out of the S/SE throughout the day. Winds at 5-10 kts until 11 AM. From 11 AM - 5 PM, winds will increase to 8-13kts. After 6 PM, winds will calm down to 2-7 kts throughout the rest of the evening.

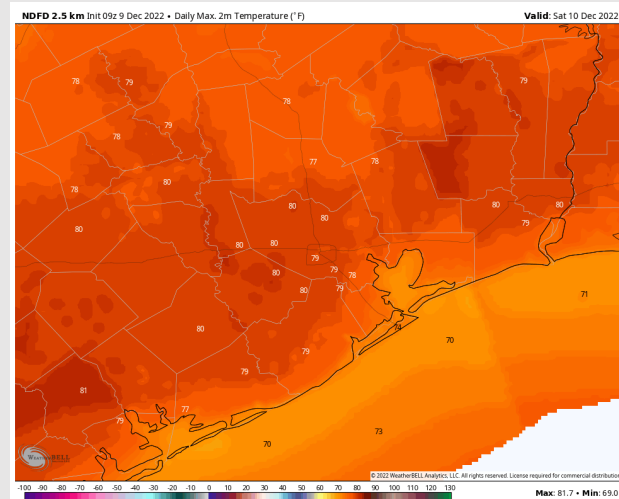
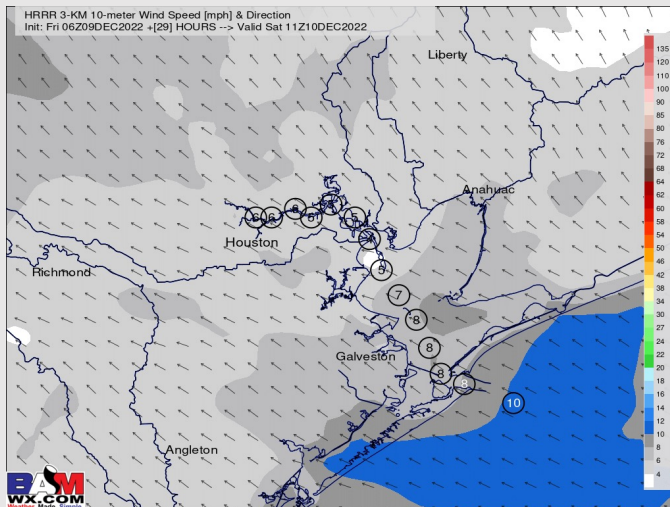
Temps: High temperatures for Saturday will be near 80 F/high 70's north of the boarding station and low 70's near the boarding station.

Visibility: Patchy fog is possible during the AM hours, with lower confidence on fog risks through the evening Saturday into Sunday. **More details found on fog slide above.**

Precip Forecast: 8 PM CT



Wind Speed
5 AM CT



High Temps
Saturday

Houston Pilots: Sun. 12/11/2022

Forecast Discussion

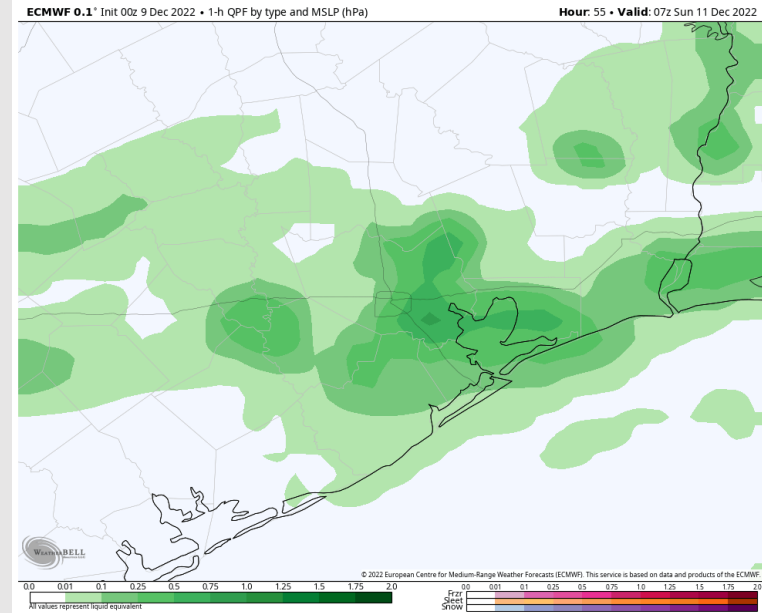
Precip: Anticipating Saturdays scattered showers/storms to continue into Sunday lasting until 7 AM CT at ~70% coverage. After 7 AM favoring chances for scattered showers/storms to decrease to 20-40% until 9 AM CT. After 9 AM CT anticipating dry conditions until around 3 PM CT. After 3 PM CT favoring a 10-20% chance for an isolated shower/storm until around 4 PM CT. After 4 PM CT, favoring dry conditions for the rest of the day.

Wind: Anticipating winds to be out of the S early Sunday AM at 4– 10 kts. As the morning progresses, winds will become more variable at 1 – 6 kts. Expecting winds to shift out of the N/NW around 10 AM and continue at 1 – 6 kts for the rest of the day.

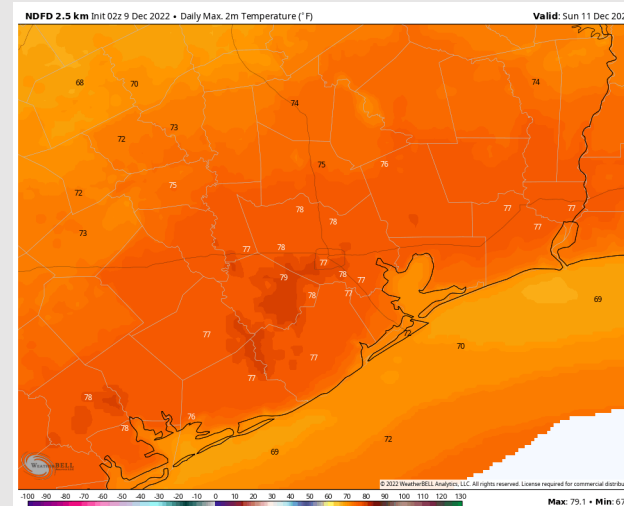
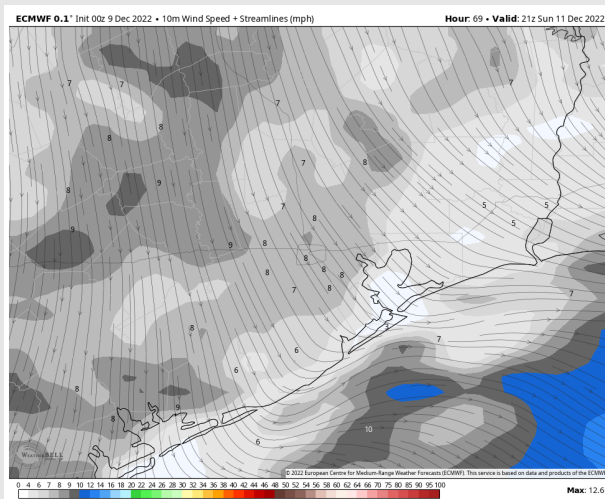
Temps: High temps Sunday will be in the low 70s F near the boarding station and in the mid 70s F at all other locations

Visibility: Patchy dense / widespread dense fog will again be possible this evening and through the overnight.

Precip Forecast: 1 AM CT



Wind Speed
3 PM CT

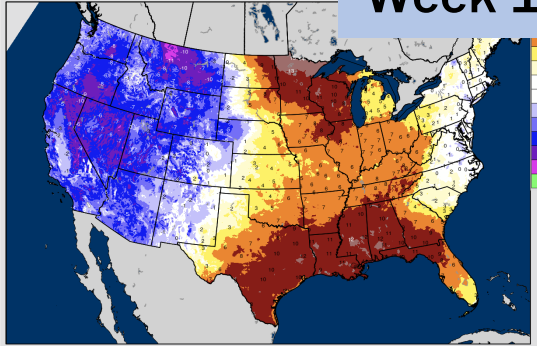


High Temps
Sunday

Houston Pilots: 12/9/22

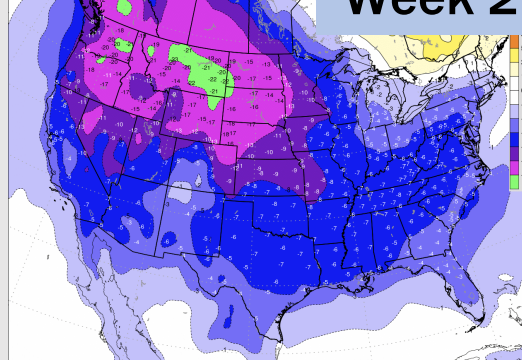
BAMCast Average Temperature Anomaly [°F]
7-DAY AVG for Fri 09DEC2022 thru Thu 15DEC2022 Days 1 to 7

Week 1



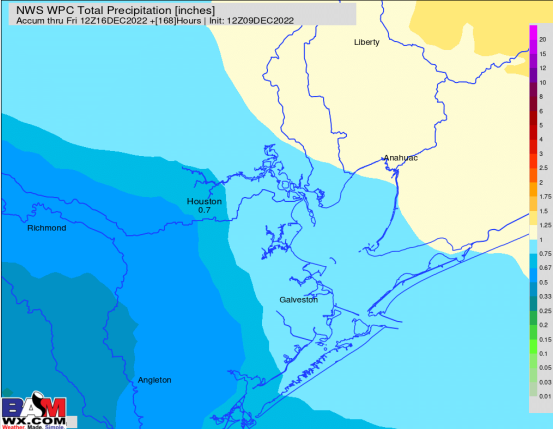
BAM EPS-GEFS 7-Day Average | 2-meter Temperature Anomaly [°F]
Init: Fri 09DEC2022 - (398) HOURS -> Valid Fri 09DEC2022

Week 2

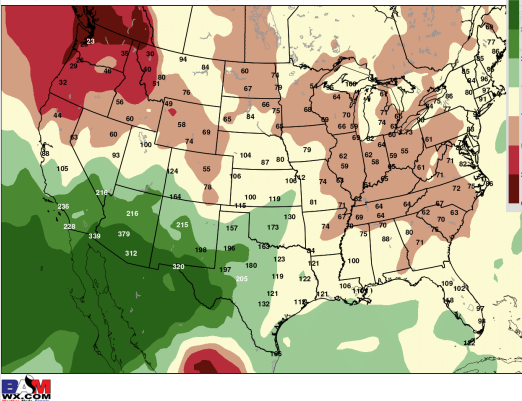


This service is based on data European Centre for Medium-range Weather Forecasts (ECMWF)

NWS WPC Total Precipitation [inches]
Accum thru Fri 12Z16DEC2022 +[168]Hours | Init: 12Z09DEC2022

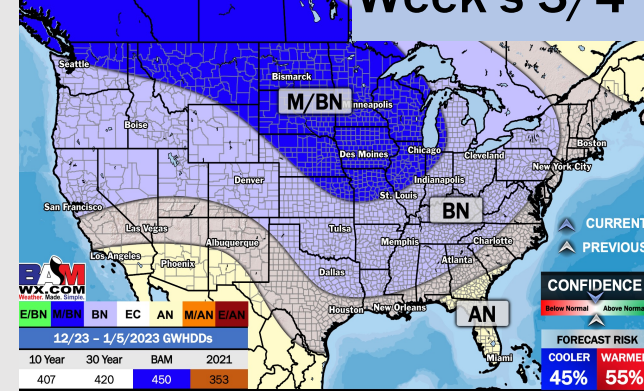


BAM EPS-GEFS+GEPS Precipitation Anomaly [%]
7-Day Anomaly -> Valid Fri 23DEC2022 +[14] Days | Init: 00Z09DEC2022



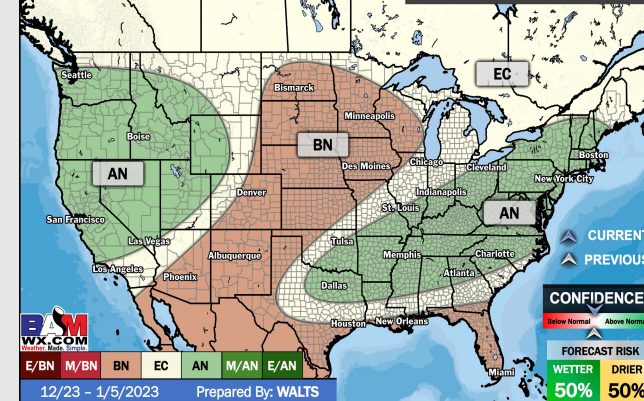
UPDATED: 12/9/22

Week's 3/4



UPDATED: 12/9/22

Week's 3/4 PRECIP DEPARTURE



- Minor, hit and miss light rain chances will be possible over the weekend with better rain chances moving in towards the end of next week. Anticipating temps staying above average.
- Week 2 is expected to be below normal for temperatures and near normal for rain chances for mid December.
- The weeks ³/₄ timeframe looks to feature below normal temperatures and equal chances to below normal for precipitation.