

Houston Pilots Forecast Package



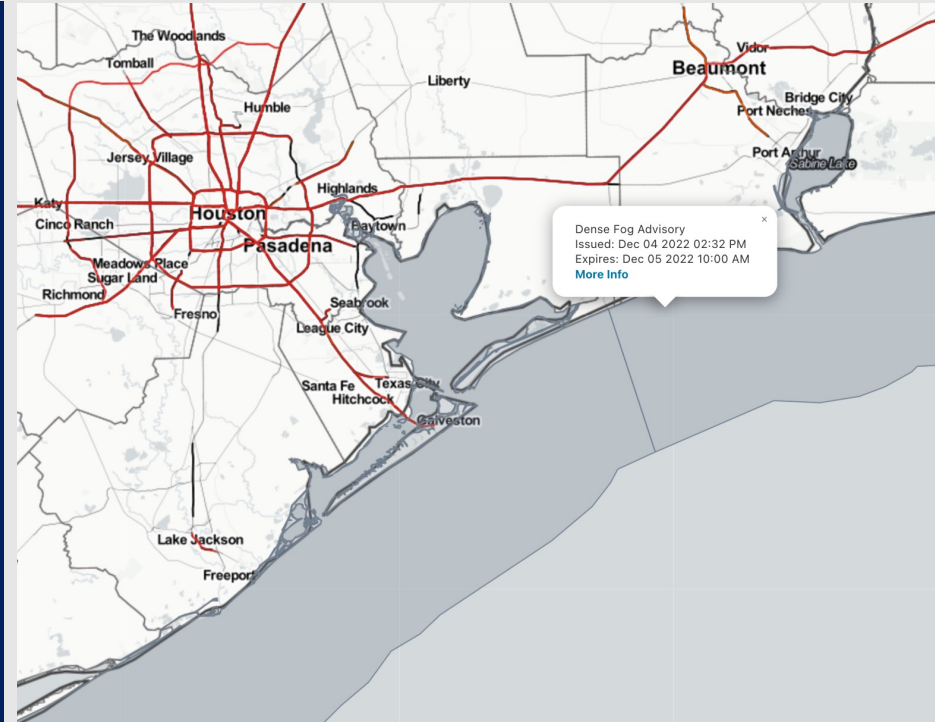
Updated: 6:40 PM CT

Sunday, December 4, 2022

Forecaster: Tyler Hollingsworth

Weather Headlines

- Anticipating a 10% chance for scattered showers today with mostly dry conditions favored. Both Monday and Tuesday hold slight spotty shower chances as well.
- Winds will generally stay within the 5 - 15 kt range over the next three days. Winds out of the NE for the Boarding Station and out of the N for all other stations. Winds will shift generally out of the ESE/SE early this PM and continue at this direction for the next three days.
- Anticipating a widespread dense fog risk for all stations this evening going into the overnight Monday. See visibility slide for further details.
- Patchy fog threats will be ongoing over the next three days.



Radar/NWS Alerts: 6:35 PM CT

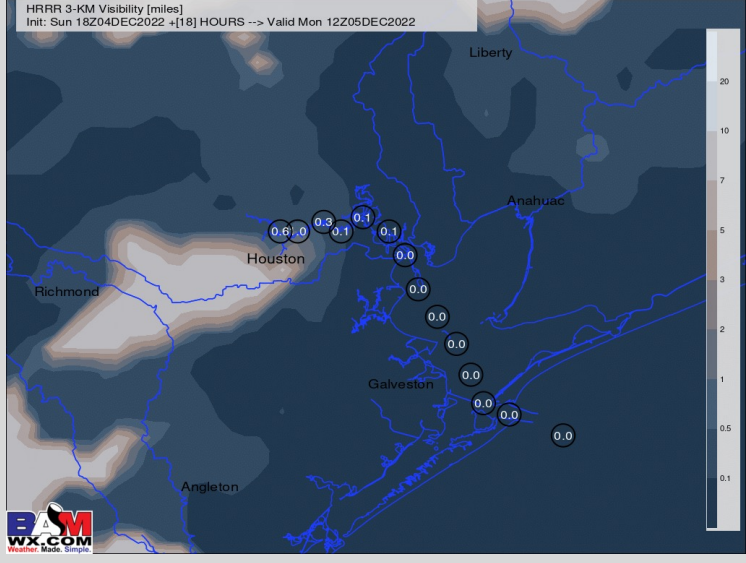
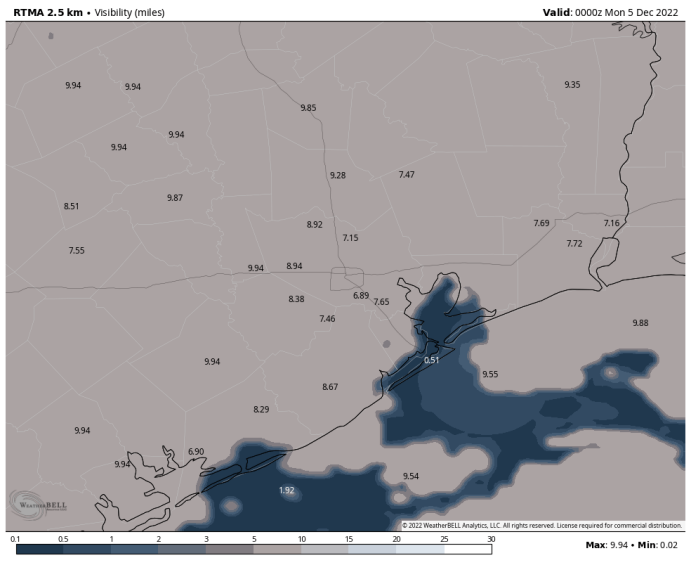


As always, please do not hesitate to reach out to us with any forecast questions via the chat option on the Weather Porthole or our on-call number, **(317)-560-8122** press 1 for forecast questions.

Houston Pilots Visibility Report



6 PM SUN Visibility 6 AM MON Visibility



Confidence



Reduced Visibility Threat

NOW – 12 PM MON **Medium-High**

- Widespread dense fog expected for rest of the evening tonight and most of the morning on Monday .
- Winds will be continuously be out of the S/SE for this time which will help form the sea fog for the area. All stations will be at risk of seeing dense fog with visibilities of 0.5 miles or less.
- Confidence for when this fog event will end Monday is low as winds will continue to be out of the S/SE Monday, allowing for patchy /dense fog to remain a risk. Expecting visibilities to progressively get better after 10 AM Monday.

Houston Pilots Extended Range Visibility Report



Wednesday 12/7/22

Southerly flow probable. Patchy fog setup looks possible south of Morgan's Point. Winds over the Houston Metro area look too strong.



Thursday 12/8/22

Spotty showers with SSW flow will allow for the possibility of patchy fog across all stations. By the afternoon, winds calm to (0 - 5 kts). Area of concern will be around the Boarding Station. All other stations appear to receive patchy fog.



Friday 12/9/22

Calm winds of less than 5 kts in the AM will allow for patchy fog. By the afternoon, winds shift from the east but still allow for potential patchy fog.



Chance for Reduced Visibility

Wednesday AM	Possible
Wednesday PM	Possible
Thursday AM	Possible
Thursday PM	Possible
Friday AM	Possible
Friday PM	Possible

Houston Pilots Visibility Report



Confidence



Time	Sun 5pm	Sun 6pm	Sun 7pm	Sun 8pm	Sun 9pm	Sun 10pm	Sun 11pm	Mon 12am	Mon 1am	Mon 2am	Mon 3am	Mon 4am	Mon 5am	Mon 6am	Mon 7am	Mon 8am	Mon 9am	Mon 10am	Mon 11am	Mon 12pm	Mon 1pm	Mon 2pm	Mon 3pm	Mon 4pm	Mon 5pm	Mon 6pm	Mon 7pm	Mon 8pm	Mon 9pm	Mon 10pm	Mon 11pm	Tue 12am	Tue 1am	Tue 2am	Tue 3am	Tue 4am		
610 Bridge	10	10	10	10	9	2	5	5	2	5	1	1	2	1	0.97	2	3	6	10	10	10	10	10	10	10	10	10	10	10	10	8	7	5	6	6	6	6	
Kinder 1	10	10	10	10	7	2	5	5	1	5	1	1	2	1	0.77	2	3	5	8	10	10	10	10	10	10	10	10	10	9	7	6	5	5	6	6	6	6	
Greens Bayou	10	10	10	10	3	1	4	4	1	1	1	1	1	1	0.77	1	2	4	7	9	10	10	10	10	10	10	10	10	9	8	6	6	5	4	5	6	5	
Shell Crude	10	10	10	10	3	0.53	4	4	0.77	1	0.77	1	1	0.77	0.77	1	2	4	8	9	10	10	10	10	10	10	10	10	9	7	7	7	7	7	9	8	7	
Lynchburg Ferries	10	10	10	5	2	1	0.59	0.8	0.56	0.77	0.53	0.99	0.87	0.77	0.56	0.53	1	4	8	9	9	10	10	10	10	10	10	10	9	7	7	7	7	7	9	8	7	
Exxon 3	10	10	10	2	2	1	0.53	0.29	0.29	0.29	0.29	0.29	0.44	0.77	0.29	0.53	1	4	8	9	9	10	10	10	10	10	10	9	7	7	7	7	7	9	8	7		
Morgans Point	10	10	9	2	2	1	0.53	0.29	0.29	0.29	0.29	0.29	0.29	0.77	0.29	0.53	1	4	8	9	9	10	10	10	10	10	9	9	7	7	7	7	7	9	8	7		
75/76	10	10	1	1	0.77	1	0.53	0.29	0.29	0.29	0.29	0.29	0.29	0.29	0.29	0.29	0.4	2	4	8	9	9	9	10	9	9	9	8	7	7	7	7	7	9	8	7		
63/64	10	7	1	1	0.77	0.53	0.53	0.29	0.29	0.29	0.29	0.29	0.29	0.29	0.29	0.29	3	4	8	9	9	9	9	9	9	9	9	7	7	7	7	7	7	9	8	7		
51/52	7	2	1	1	0.77	0.53	0.29	0.29	0.29	0.29	0.29	0.29	0.29	0.29	0.29	0.29	3	4	8	9	9	9	9	9	9	9	7	7	7	7	7	7	7	9	8	7		
37/38	2	1	1	1	0.53	0.53	0.29	0.29	0.29	0.29	0.29	0.29	0.29	0.29	0.29	0.29	3	5	7	8	9	9	9	9	9	9	7	7	7	7	7	7	6	6	9	7	7	
25/26	1	1	1	1	0.53	0.53	0.29	0.29	0.29	0.29	0.29	0.29	0.29	0.53	0.36	0.29	5	7	7	7	9	9	9	9	9	9	7	7	7	7	7	7	7	5	7	9	9	7
11/12	1	1	1	2	0.53	0.53	0.29	0.29	0.29	0.29	0.29	0.29	0.29	0.53	0.53	0.29	3	5	7	7	7	7	7	8	8	7	7	7	7	7	7	7	7	3	6	7	7	7
1 & 2 Bravo	2	1	2	2	0.53	0.53	0.29	0.29	0.29	0.29	0.29	0.29	0.29	0.53	0.53	0.29	1	2	7	7	7	7	7	7	7	7	7	7	7	7	7	7	5	1	2	7	7	7

Please check slide above for official thinking on fog.