

# Houston Pilots Forecast Package

Houston Pilots



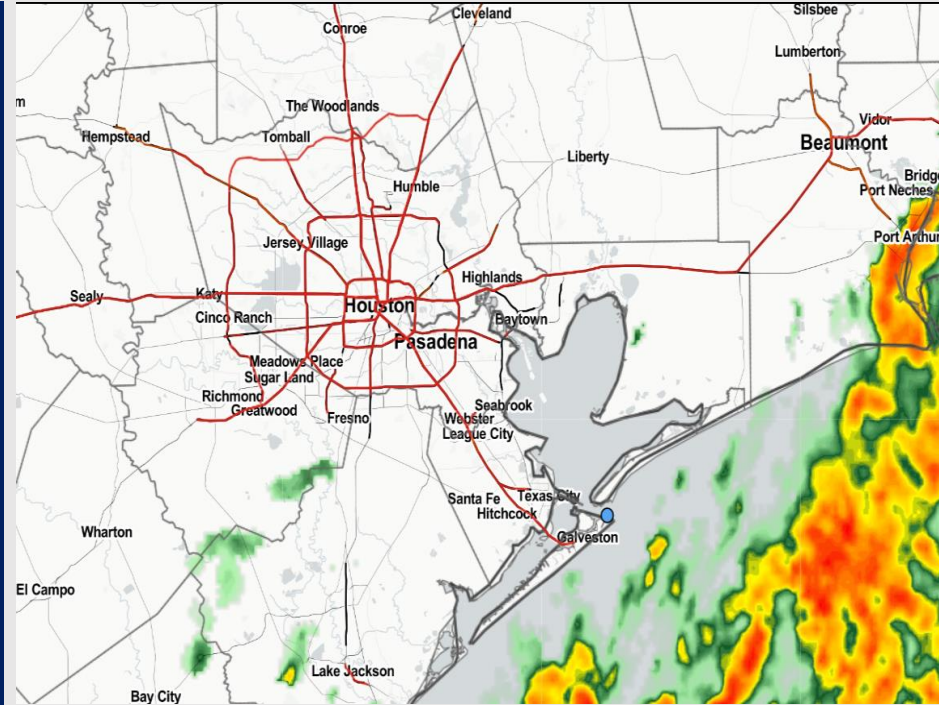
Updated: 5:00 AM CT

Saturday, November 5, 2022

Forecaster: Jonathan Kipper

## Weather Headlines

- Anticipating storms moving through Galv. Bay this morning to continue until 7-8 AM. Scattered showers/storms over next few days.
- No direct tropical activity is favored in SE TX over the next 7-10 days.
- Sustained winds will begin to veer out of the SE this evening and continue the next few days.
- Not anticipating any visibility concerns at this time



**Radar/ NWS Alerts: 5:00 AM CT**



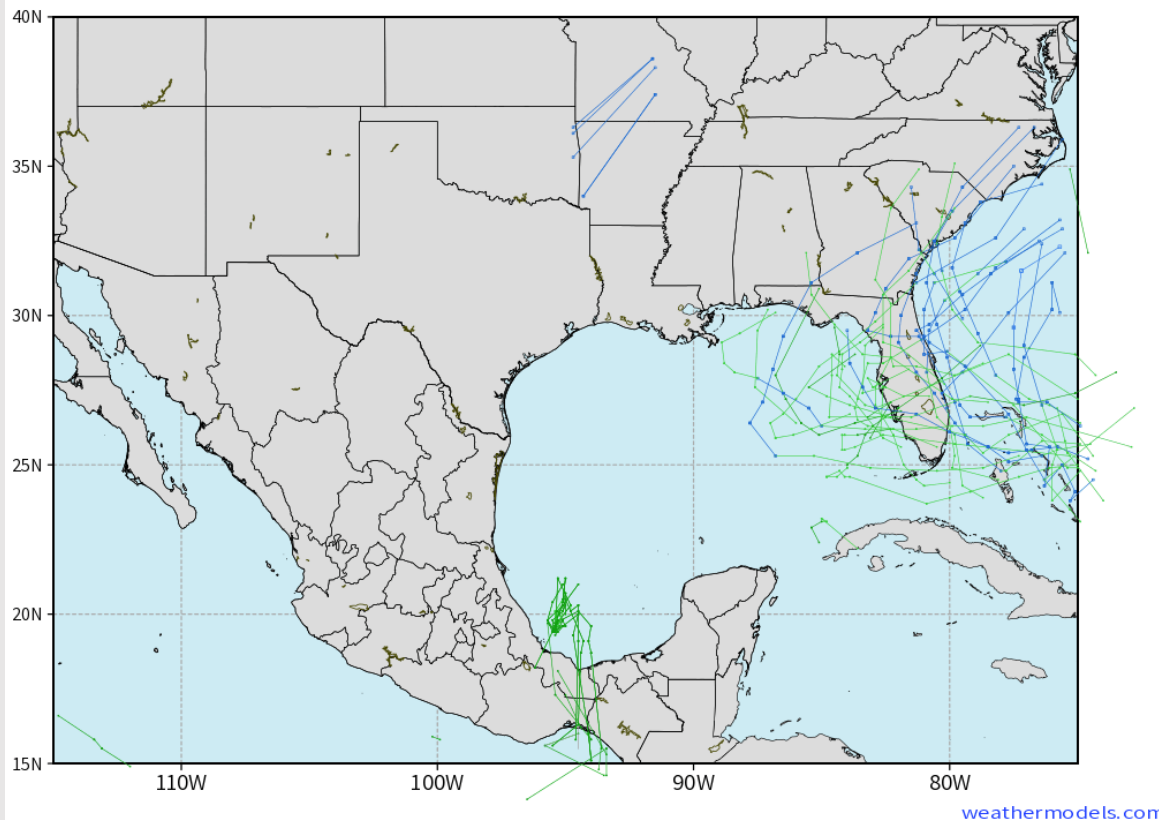
As always, please do not hesitate to reach out to us with any forecast questions via the chat option on the Weather Porthole or our on-call number, **(317)-560-8122** press 1 for forecast questions.

# Houston Pilots Extended Range Tropical Report

## European Data Tracks Next 10 Days

ECMWF GULF EPS Cyclone Locations --> Next [10-days]  
INIT: 00Z05NOV2022 --> UNTIL 00Z15NOV2022

o-o ENSEMBLE MEAN  
o-o 1000 - 1010 hPa  
o-o 980 - 999 hPa  
o-o 960 - 979 hPa  
o-o 950 - 959 hPa  
o-o < 950 hPa



**There are no tropical threats  
anticipated for SE TX over the next 7-  
10 days.**

## Confidence

Above  
Normal

Below  
Normal

# Houston Pilots Visibility Report



Time	11-05-2022 Sat 3am	11-05-2022 Sat 4am	11-05-2022 Sat 5am	11-05-2022 Sat 6am	11-05-2022 Sat 7am	11-05-2022 Sat 8am	11-05-2022 Sat 9am	11-05-2022 Sat 10am	11-05-2022 Sat 11am	11-05-2022 Sat 12pm	11-05-2022 Sat 1pm	11-05-2022 Sat 2pm	11-05-2022 Sat 3pm	11-05-2022 Sat 4pm	11-05-2022 Sat 5pm	11-05-2022 Sat 6pm	11-05-2022 Sat 7pm	11-05-2022 Sat 8pm	11-05-2022 Sat 9pm	11-05-2022 Sat 10pm	11-05-2022 Sat 11pm	11-06-2022 Sun 12am	11-06-2022 Sun 1am	11-06-2022 Sun 1am	11-06-2022 Sun 2am	11-06-2022 Sun 3am	11-06-2022 Sun 4am	11-06-2022 Sun 5am	11-06-2022 Sun 6am	11-06-2022 Sun 7am	11-06-2022 Sun 8am	11-06-2022 Sun 9am	11-06-2022 Sun 10am	11-06-2022 Sun 11am	11-06-2022 Sun 12pm	11-06-2022 Sun 1pm	
Houston Pilots N - 610 Bridge	6.931	7.618	9.697	10.000	10.000	10.000	10.000	10.000	10.000	10.000	10.000	10.000	10.000	10.000	10.000	10.000	10.000	10.000	10.000	10.000	10.000	10.000	10.000	10.000	10.000	10.000	10.000	9.761	7.613	4.897	4.931	6.248	9.033	10.000	10.000	10.000	
Houston Pilots M - Kinder 1	6.931	7.616	9.755	10.000	10.000	10.000	10.000	10.000	10.000	10.000	10.000	10.000	10.000	10.000	10.000	10.000	10.000	10.000	10.000	10.000	10.000	10.000	10.000	10.000	10.000	10.000	10.000	9.687	7.611	5.711	5.745	6.745	9.033	10.000	10.000	10.000	
Houston Pilots L - Greens Bayou	8.401	9.451	10.000	10.000	10.000	10.000	10.000	10.000	10.000	10.000	10.000	10.000	10.000	10.000	10.000	10.000	10.000	10.000	10.000	10.000	10.000	10.000	10.000	10.000	10.000	10.000	10.000	9.768	7.919	6.718	6.752	7.862	9.768	10.000	10.000	10.000	
Houston Pilots K - Shell Crude	6.959	8.128	10.000	10.000	10.000	10.000	10.000	10.000	10.000	10.000	10.000	10.000	10.000	10.000	10.000	10.000	10.000	10.000	10.000	10.000	10.000	10.000	10.000	10.000	10.000	10.000	10.000	9.033	7.999	7.999	8.033	9.033	9.033	10.000	10.000	10.000	
Houston Pilots J - Lynchburg Ferries	9.338	9.782	10.000	10.000	10.000	10.000	10.000	10.000	10.000	10.000	10.000	10.000	10.000	10.000	10.000	10.000	10.000	10.000	10.000	10.000	10.000	10.000	10.000	10.000	10.000	10.000	10.000	9.033	7.999	7.999	8.033	9.033	10.000	10.000	10.000	10.000	
Houston Pilots I - Exxon 3	6.970	10.000	10.000	10.000	10.000	10.000	10.000	10.000	10.000	10.000	10.000	10.000	10.000	10.000	10.000	10.000	10.000	10.000	10.000	10.000	10.000	10.000	10.000	10.000	10.000	10.000	10.000	9.033	7.999	7.999	8.033	9.033	9.745	10.000	10.000	10.000	
Houston Pilots H - Morgans Point	6.970	10.000	10.000	10.000	10.000	10.000	10.000	10.000	10.000	10.000	10.000	10.000	10.000	10.000	10.000	10.000	10.000	10.000	10.000	10.000	10.000	10.000	10.000	10.000	10.000	10.000	10.000	9.033	7.999	7.999	8.033	9.033	9.871	10.000	10.000	10.000	
Houston Pilots G - 75/76	6.970	10.000	10.000	10.000	10.000	10.000	10.000	10.000	10.000	10.000	10.000	10.000	10.000	10.000	10.000	10.000	10.000	10.000	10.000	10.000	10.000	10.000	10.000	10.000	10.000	10.000	10.000	9.033	7.999	7.999	8.033	9.033	9.900	10.000	10.000	10.000	
Houston Pilots F - 63/64	6.970	10.000	10.000	10.000	10.000	10.000	10.000	10.000	10.000	10.000	10.000	10.000	10.000	10.000	10.000	10.000	10.000	10.000	10.000	10.000	10.000	10.000	10.000	10.000	10.000	9.557	9.641	9.033	7.999	7.999	8.033	9.033	10.000	10.000	10.000	10.000	
Houston Pilots E - 51/52	6.931	10.000	10.000	10.000	10.000	10.000	10.000	10.000	10.000	10.000	10.000	10.000	10.000	10.000	10.000	10.000	10.000	10.000	10.000	10.000	10.000	10.000	10.000	10.000	10.000	9.033	9.033	9.033	7.999	7.999	8.033	9.033	10.000	10.000	10.000	10.000	
Houston Pilots D - 37/38	6.931	10.000	10.000	10.000	10.000	10.000	10.000	10.000	10.000	10.000	10.000	10.000	10.000	10.000	10.000	10.000	10.000	10.000	10.000	10.000	10.000	10.000	10.000	10.000	10.000	9.033	9.033	9.033	9.033	7.999	8.033	7.999	10.000	10.000	10.000	10.000	
Houston Pilots C - 25/26	6.931	10.000	10.000	10.000	10.000	10.000	10.000	10.000	10.000	10.000	10.000	10.000	10.000	10.000	10.000	10.000	10.000	10.000	10.000	10.000	10.000	10.000	10.000	10.000	10.000	9.033	9.033	9.033	9.033	7.999	8.033	7.999	10.000	10.000	10.000	10.000	
Houston Pilots B - 11/12	9.146	10.000	10.000	10.000	10.000	10.000	10.000	10.000	10.000	10.000	10.000	10.000	10.000	10.000	10.000	10.000	10.000	10.000	10.000	10.000	10.000	10.000	10.000	10.000	10.000	9.033	9.033	9.033	9.033	7.999	8.033	7.999	10.000	10.000	10.000	10.000	
Houston Pilots A - 1 & 2 Bravo	10.000	10.000	10.000	10.000	10.000	10.000	10.000	10.000	10.000	10.000	10.000	10.000	10.000	10.000	10.000	10.000	10.000	10.000	10.000	10.000	10.000	10.000	10.000	10.000	10.000	10.000	9.033	9.033	9.033	9.033	7.999	8.033	7.999	9.548	9.583	9.548	9.548

# Houston Pilots Wind Report



Time Knots	11-05-2022 Sat 3am	11-05-2022 Sat 4am	11-05-2022 Sat 5am	11-05-2022 Sat 6am	11-05-2022 Sat 7am	11-05-2022 Sat 8am	11-05-2022 Sat 9am	11-05-2022 Sat 10am	11-05-2022 Sat 11am	11-05-2022 Sat 12pm	11-05-2022 Sat 1pm	11-05-2022 Sat 2pm	11-05-2022 Sat 3pm	11-05-2022 Sat 4pm	11-05-2022 Sat 5pm	11-05-2022 Sat 6pm	11-05-2022 Sat 7pm	11-05-2022 Sat 8pm	11-05-2022 Sat 9pm	11-05-2022 Sat 10pm	11-05-2022 Sat 11pm	11-06-2022 Sun 12am	11-06-2022 Sun 1am	11-06-2022 Sun 2am	11-06-2022 Sun 3am	11-06-2022 Sun 4am	11-06-2022 Sun 5am	11-06-2022 Sun 6am	11-06-2022 Sun 7am	11-06-2022 Sun 8am	11-06-2022 Sun 9am	11-06-2022 Sun 10am	11-06-2022 Sun 11am	11-06-2022 Sun 12pm	11-06-2022 Sun 1pm		
Houston Pilots N - 610 Bridge	WS: 4 G:14 NE	WS: 2 G:12 NW	WS: 3 G:11 NNW	WS: 4 G:11 NNE	WS: 4 G:10 NNE	WS: 2 G:7 NNE	WS: 3 G:11 ESE	WS: 4 G:10 N	WS: 3 G:8 NNE	WS: 3 G:8 NE	WS: 3 G:6 NE	WS: 3 G:5 NNE	WS: 4 G:5 ENE	WS: 3 G:4 NNE	WS: 3 G:3 ENE	WS: 2 G:5 E	WS: 3 G:4 ESE	WS: 3 G:4 SE	WS: 3 G:4 SE	WS: 2 G:4 SE	WS: 2 G:3 SE	WS: 1 G:3 SSE	WS: 2 G:3 SE	WS: 1 G:2 ESE	WS: 1 G:2 ENE	WS: 1 G:2 ENE	WS: 1 G:2 ENE	WS: 2 G:3 ENE	WS: 2 G:3 ENE	WS: 2 G:3 ENE	WS: 2 G:4 ENE	WS: 3 G:5 E	WS: 4 G:6 E	WS: 4 G:8 ESE	WS: 5 G:9 SE	WS: 5 G:10 SE	WS: 6 G:11 SE
Houston Pilots M - Kinder 1	WS: 5 G:14 SE	WS: 2 G:12 NNW	WS: 3 G:11 NNW	WS: 4 G:12 NNE	WS: 4 G:10 NNE	WS: 2 G:7 NE	WS: 3 G:10 ESE	WS: 4 G:10 N	WS: 3 G:8 NNE	WS: 3 G:8 NE	WS: 3 G:6 NE	WS: 3 G:5 NNE	WS: 4 G:5 NE	WS: 3 G:4 NNE	WS: 3 G:3 ENE	WS: 3 G:5 E	WS: 3 G:4 ESE	WS: 3 G:4 SE	WS: 3 G:4 SE	WS: 2 G:3 SE	WS: 2 G:3 SE	WS: 1 G:3 SE	WS: 2 G:2 SE	WS: 2 G:2 SE	WS: 1 G:2 ENE	WS: 1 G:2 ENE	WS: 1 G:2 ENE	WS: 2 G:4 ENE	WS: 2 G:4 ENE	WS: 2 G:4 ENE	WS: 3 G:5 E	WS: 4 G:6 E	WS: 4 G:8 ESE	WS: 5 G:9 ESE	WS: 5 G:10 SE	WS: 6 G:11 SE	
Houston Pilots L - Greens Bayou	WS: 6 G:15 W	WS: 2 G:13 NNW	WS: 3 G:11 NNW	WS: 4 G:12 NNE	WS: 4 G:10 NNE	WS: 1 G:6 ENE	WS: 3 G:10 E	WS: 4 G:10 N	WS: 3 G:7 NNE	WS: 3 G:8 NNE	WS: 3 G:6 NE	WS: 3 G:5 NNE	WS: 4 G:5 NNE	WS: 3 G:4 NNE	WS: 3 G:3 ENE	WS: 3 G:5 E	WS: 3 G:4 ESE	WS: 3 G:3 SE	WS: 3 G:3 SE	WS: 2 G:3 SE	WS: 2 G:2 SE	WS: 1 G:3 SE	WS: 2 G:2 SE	WS: 1 G:2 ESE	WS: 1 G:1 ENE	WS: 1 G:2 NE	WS: 1 G:2 NE	WS: 2 G:4 ENE	WS: 2 G:4 ENE	WS: 2 G:4 ENE	WS: 3 G:5 E	WS: 4 G:6 E	WS: 4 G:7 ESE	WS: 5 G:8 ESE	WS: 5 G:10 SE	WS: 7 G:10 SE	
Houston Pilots K - Shell Crude	WS: 7 G:16 NW	WS: 2 G:13 NNW	WS: 3 G:11 W	WS: 4 G:12 NNE	WS: 4 G:11 NNE	WS: 2 G:7 ESE	WS: 3 G:10 NNE	WS: 4 G:10 N	WS: 3 G:8 NNE	WS: 3 G:8 NNE	WS: 3 G:6 NNE	WS: 4 G:5 NNE	WS: 4 G:5 NNE	WS: 3 G:4 NE	WS: 3 G:4 E	WS: 3 G:5 E	WS: 3 G:4 ESE	WS: 3 G:3 SE	WS: 3 G:3 SE	WS: 2 G:3 SE	WS: 2 G:2 SE	WS: 1 G:3 SE	WS: 1 G:2 ESE	WS: 1 G:2 ESE	WS: 1 G:2 ENE	WS: 1 G:2 ENE	WS: 1 G:2 ENE	WS: 2 G:4 ENE	WS: 2 G:4 ENE	WS: 3 G:4 ENE	WS: 3 G:5 E	WS: 4 G:6 E	WS: 4 G:7 ESE	WS: 5 G:8 ESE	WS: 5 G:10 SE	WS: 7 G:10 SE	
Houston Pilots J - Lynchburg Ferries	WS: 7 G:17 NNW	WS: 3 G:13 NW	WS: 2 G:10 WSW	WS: 4 G:11 NNE	WS: 4 G:10 N	WS: 1 G:7 ESE	WS: 3 G:10 NNE	WS: 5 G:11 N	WS: 3 G:8 NNE	WS: 3 G:7 NNE	WS: 4 G:6 NNE	WS: 4 G:5 NNE	WS: 4 G:5 NNE	WS: 3 G:4 NE	WS: 3 G:4 ENE	WS: 3 G:5 E	WS: 3 G:4 ESE	WS: 3 G:3 SE	WS: 3 G:3 SE	WS: 2 G:3 SE	WS: 2 G:2 SE	WS: 2 G:3 SE	WS: 2 G:2 ESE	WS: 2 G:2 E	WS: 2 G:2 ENE	WS: 2 G:2 ENE	WS: 2 G:3 NE	WS: 2 G:4 ENE	WS: 2 G:4 ENE	WS: 3 G:4 ENE	WS: 3 G:5 E	WS: 4 G:6 E	WS: 4 G:7 ESE	WS: 5 G:8 SE	WS: 5 G:9 SE	WS: 7 G:10 SE	
Houston Pilots I - Exxon 3	WS: 9 G:19 NNW	WS: 2 G:12 W	WS: 3 G:10 SW	WS: 4 G:12 NNE	WS: 4 G:11 NNE	WS: 2 G:8 S	WS: 3 G:11 NNE	WS: 5 G:11 N	WS: 4 G:9 NNE	WS: 4 G:8 N	WS: 4 G:7 NNE	WS: 4 G:6 NNE	WS: 4 G:6 NNE	WS: 4 G:5 NNE	WS: 2 G:4 NE	WS: 2 G:5 E	WS: 3 G:4 ESE	WS: 3 G:4 SE	WS: 3 G:3 SE	WS: 3 G:3 SE	WS: 2 G:3 SE	WS: 2 G:3 SE	WS: 2 G:2 ESE	WS: 2 G:3 E	WS: 2 G:3 ENE	WS: 2 G:3 ENE	WS: 2 G:3 NE	WS: 3 G:4 NE	WS: 3 G:4 ENE	WS: 3 G:5 E	WS: 4 G:6 E	WS: 4 G:7 ESE	WS: 5 G:8 SE	WS: 6 G:9 SE	WS: 7 G:10 SE		
Houston Pilots H - Morgans Point	WS: 11 G:20 NW	WS: 5 G:14 WNW	WS: 5 G:12 WSW	WS: 7 G:14 NNE	WS: 4 G:11 NNE	WS: 5 G:10 SE	WS: 4 G:12 NNE	WS: 5 G:11 NNE	WS: 5 G:10 NNE	WS: 4 G:9 N	WS: 4 G:7 NNE	WS: 5 G:6 NNE	WS: 5 G:7 N	WS: 4 G:6 NNE	WS: 2 G:5 NE	WS: 4 G:5 E	WS: 4 G:5 ESE	WS: 4 G:5 SE	WS: 3 G:5 SE	WS: 3 G:4 SE	WS: 3 G:4 SE	WS: 3 G:4 ESE	WS: 3 G:4 ESE	WS: 3 G:3 E	WS: 3 G:3 ENE	WS: 3 G:3 ENE	WS: 3 G:4 ENE	WS: 3 G:4 ENE	WS: 3 G:5 ENE	WS: 4 G:6 E	WS: 5 G:7 E	WS: 5 G:8 ESE	WS: 5 G:8 ESE	WS: 6 G:9 SE	WS: 7 G:10 SE		
Houston Pilots G - 75/76	WS: 13 G:19 NW	WS: 12 G:18 NNW	WS: 8 G:12 ESE	WS: 11 G:17 NNE	WS: 9 G:14 NNE	WS: 9 G:14 NE	WS: 7 G:12 NNE	WS: 6 G:12 NNE	WS: 7 G:12 NNE	WS: 6 G:10 NNE	WS: 6 G:8 NNE	WS: 5 G:7 NNE	WS: 6 G:7 NNE	WS: 6 G:6 NNE	WS: 4 G:5 ENE	WS: 4 G:5 ESE	WS: 4 G:5 ESE	WS: 4 G:6 ESE	WS: 5 G:6 ESE	WS: 5 G:6 ESE	WS: 5 G:6 ESE	WS: 5 G:6 ESE	WS: 4 G:5 ESE	WS: 4 G:5 ESE	WS: 4 G:4 E	WS: 4 G:4 ENE	WS: 4 G:5 ENE	WS: 4 G:5 ENE	WS: 5 G:6 ENE	WS: 5 G:7 ENE	WS: 5 G:8 E	WS: 6 G:9 ESE	WS: 6 G:9 ESE	WS: 7 G:10 SE			
Houston Pilots F - 63/64	WS: 16 G:20 NW	WS: 14 G:19 NNW	WS: 11 G:14 NNE	WS: 12 G:18 NNE	WS: 12 G:16 NNE	WS: 9 G:14 NNE	WS: 8 G:12 NNE	WS: 8 G:12 NNE	WS: 8 G:11 NNE	WS: 7 G:8 NNE	WS: 6 G:8 NNE	WS: 7 G:8 NNE	WS: 7 G:7 NE	WS: 5 G:7 NE	WS: 4 G:6 E	WS: 4 G:6 ESE	WS: 5 G:6 ESE	WS: 5 G:7 ESE	WS: 5 G:7 ESE	WS: 5 G:7 ESE	WS: 5 G:7 ESE	WS: 5 G:7 ESE	WS: 5 G:6 ESE	WS: 4 G:5 ESE	WS: 4 G:5 ENE	WS: 4 G:5 ENE	WS: 4 G:5 ENE	WS: 5 G:6 ENE	WS: 5 G:7 ENE	WS: 6 G:8 E	WS: 6 G:9 ESE	WS: 6 G:9 ESE	WS: 7 G:10 SE	WS: 7 G:10 SE			
Houston Pilots E - 51/52	WS: 19 G:22 NW	WS: 13 G:18 NNW	WS: 14 G:18 NNE	WS: 13 G:17 NNE	WS: 12 G:17 NNE	WS: 8 G:12 NNE	WS: 8 G:12 NNE	WS: 8 G:13 NNE	WS: 8 G:14 NNE	WS: 9 G:12 NNE	WS: 7 G:9 NNE	WS: 7 G:8 NNE	WS: 8 G:9 SE	WS: 7 G:8 NE	WS: 6 G:8 NNE	WS: 4 G:6 E	WS: 5 G:6 ESE	WS: 5 G:6 ESE	WS: 6 G:7 ESE	WS: 6 G:7 ESE	WS: 6 G:7 ESE	WS: 5 G:7 ESE	WS: 5 G:7 ESE	WS: 5 G:6 ESE	WS: 4 G:5 E	WS: 4 G:5 ENE	WS: 5 G:6 ENE	WS: 5 G:6 ENE	WS: 5 G:7 ENE	WS: 6 G:8 E	WS: 6 G:9 ESE	WS: 6 G:9 ESE	WS: 7 G:10 SE	WS: 7 G:10 SE			
Houston Pilots D - 37/38	WS: 19 G:23 NW	WS: 14 G:19 NNW	WS: 15 G:18 NNE	WS: 14 G:19 NNE	WS: 12 G:16 NNE	WS: 8 G:11 NNE	WS: 8 G:13 NNE	WS: 8 G:13 NE	WS: 8 G:14 NNE	WS: 8 G:12 NNE	WS: 7 G:9 NNE	WS: 7 G:8 NNE	WS: 8 G:9 SW	WS: 8 G:9 ESE	WS: 6 G:8 NNE	WS: 5 G:6 E	WS: 5 G:6 ESE	WS: 5 G:7 ESE	WS: 6 G:7 ESE	WS: 6 G:7 ESE	WS: 6 G:7 ESE	WS: 5 G:7 ESE	WS: 5 G:6 ESE	WS: 5 G:6 ESE	WS: 4 G:5 E	WS: 4 G:5 ENE	WS: 5 G:6 ENE	WS: 5 G:6 ENE	WS: 5 G:7 ENE	WS: 6 G:8 E	WS: 6 G:9 ESE	WS: 6 G:9 ESE	WS: 7 G:10 ESE	WS: 7 G:10 ESE	WS: 8 G:11 ESE		
Houston Pilots C - 25/26	WS: 19 G:23 NW	WS: 15 G:21 NNW	WS: 14 G:19 NNE	WS: 13 G:19 NNE	WS: 11 G:17 NNE	WS: 8 G:12 NE	WS: 8 G:14 NNE	WS: 8 G:13 NE	WS: 7 G:13 NNE	WS: 7 G:12 NE	WS: 7 G:9 NNE	WS: 7 G:8 NNE	WS: 8 G:9 ESE	WS: 7 G:9 NNE	WS: 5 G:8 NNE	WS: 5 G:7 E	WS: 5 G:7 E	WS: 6 G:7 E	WS: 6 G:8 ESE	WS: 6 G:8 ESE	WS: 6 G:7 ESE	WS: 6 G:7 ESE	WS: 5 G:6 ESE	WS: 5 G:6 ESE	WS: 4 G:5 ESE	WS: 4 G:5 ENE	WS: 5 G:6 ENE	WS: 5 G:6 ENE	WS: 5 G:7 ENE	WS: 6 G:8 E	WS: 6 G:9 ESE	WS: 7 G:10 ESE	WS: 7 G:10 ESE	WS: 7 G:10 ESE	WS: 8 G:11 ESE		
Houston Pilots B - 11/12	WS: 17 G:22 NW	WS: 14 G:21 WNW	WS: 14 G:21 NNE	WS: 13 G:20 N	WS: 11 G:18 NNE	WS: 7 G:12 NE	WS: 9 G:16 NNE	WS: 8 G:14 NE	WS: 7 G:13 NNE	WS: 8 G:12 NE	WS: 7 G:9 NNE	WS: 7 G:8 NNE	WS: 7 G:8 NNE	WS: 6 G:9 ESE	WS: 5 G:7 NNE	WS: 6 G:7 E	WS: 6 G:7 E	WS: 6 G:8 E	WS: 6 G:8 E	WS: 6 G:8 E	WS: 6 G:8 ESE	WS: 6 G:8 ESE	WS: 6 G:7 ESE	WS: 5 G:7 ESE	WS: 5 G:5 ESE	WS: 5 G:5 E	WS: 5 G:5 E	WS: 5 G:6 ENE	WS: 5 G:7 ENE	WS: 6 G:8 E	WS: 6 G:9 ESE	WS: 7 G:10 ESE	WS: 7 G:10 ESE	WS: 8 G:11 ESE	WS: 8 G:11 ESE		
Houston Pilots A - 1 & 2 Bravo	WS: 21 G:24 NW	WS: 19 G:21 WNW	WS: 18 G:26 SE	WS: 17 G:24 NNE	WS: 15 G:21 NNE	WS: 11 G:18 NE	WS: 12 G:19 NNE	WS: 11 G:15 NE	WS: 10 G:13 NE	WS: 10 G:13 NE	WS: 9 G:10 NE	WS: 9 G:9 NNE	WS: 7 G:9 NNE	WS: 7 G:9 NNE	WS: 6 G:8 NE	WS: 7 G:8 E	WS: 7 G:8 E	WS: 7 G:9 E	WS: 8 G:9 E	WS: 8 G:9 E	WS: 7 G:9 ESE	WS: 7 G:9 ESE	WS: 7 G:9 ESE	WS: 6 G:8 ESE	WS: 6 G:6 ESE	WS: 5 G:6 E	WS: 6 G:7 E	WS: 6 G:8 ENE	WS: 7 G:9 E	WS: 7 G:10 E	WS: 8 G:10 E	WS: 8 G:11 ESE	WS: 8 G:11 ESE	WS: 9 G:11 E			

See slides below for official thoughts on winds.



# Houston Pilots: sat. 11/5/2022

## Forecast Discussion

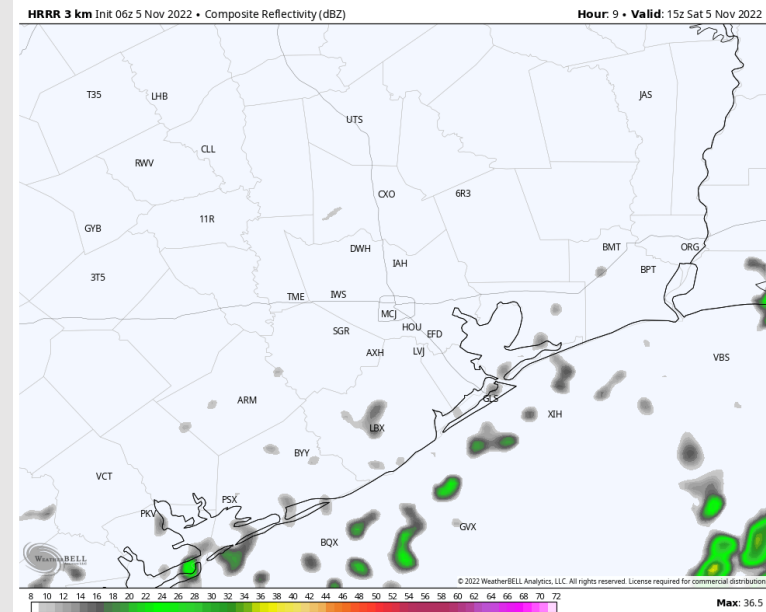
**Precip:** Showers and thunderstorms will continue to move through Galveston Bay until 7-8 AM, with light showers possibly lingering until 11 AM. Favoring dry conditions thereafter and for the remainder of the day.

**Wind:** Sustained winds out of the NE 3-7 kts N of Morgan's Point and 13-18 kts S of Morgan's Point through 8 AM. After 8 AM, winds south of Morgan's Point calm down to 10-15 kts. After 4 PM and through the rest of the day, winds will gradually veer out of the ESE and all stations will be 4-9 kts. Gusts of 22 kts possible until 10 AM.

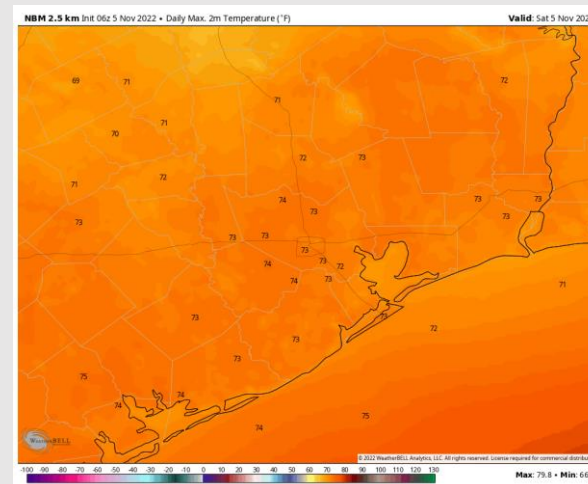
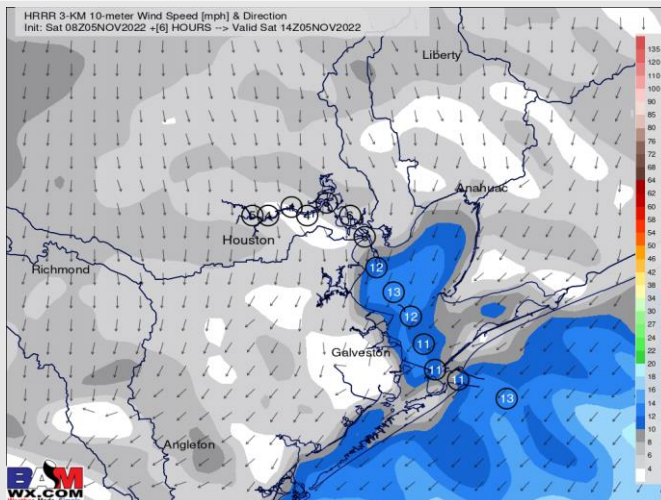
**Temps:** High temps Saturday in the low 70s F at the boarding station and in the mid 70s F at all other stations.

**Visibility:** Not anticipating any visibility concerns at this time.

## Precip Forecast: 10 AM CT



Wind Speed  
9 AM CT



High Temps  
Saturday

# Houston Pilots: Sun. 11/6/2022

## Forecast Discussion

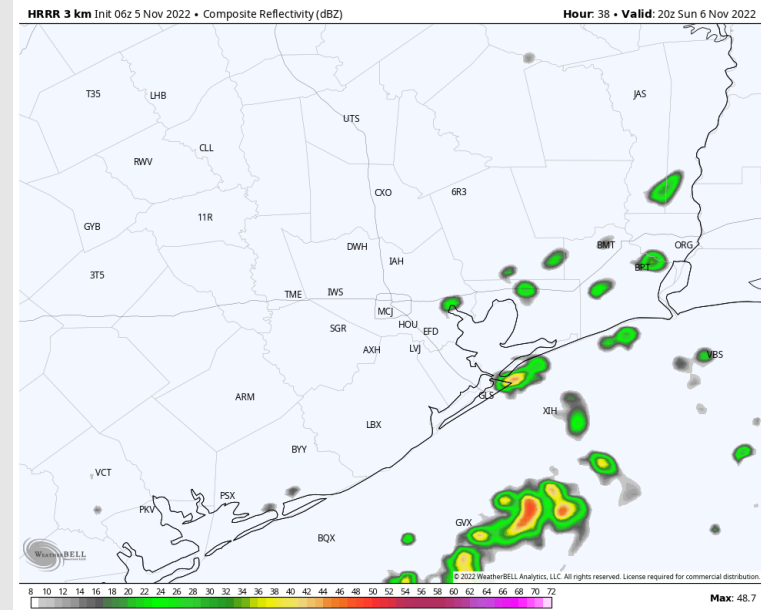
**Precip:** Anticipating a 30% chance of scattered showers to move through the region between 1 PM-CST and 9 PM-CST. Dry conditions expected beyond 8 PM.

**Wind:** Sustained winds out of the ESE Sunday AM at 3-7 kts until 5 AM-CST. Winds N of Morgan's Point 3-7 kts, winds S of Morgan's Point 7-12 kts after 5 AM-CST. After 4 PM-CST, winds will shift to out of the SE for the rest of the day.

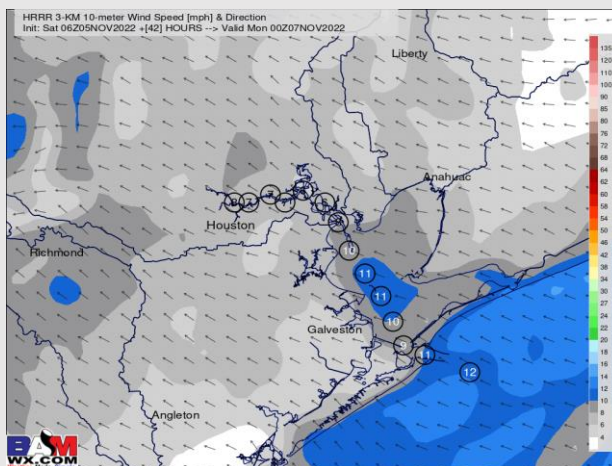
**Temps:** High temps Sunday in the mid 70s F near the the boarding station and in the upper 70s F to lower 80s F at all other stations.

**Visibility:** Not anticipating any visibility concerns at this time.

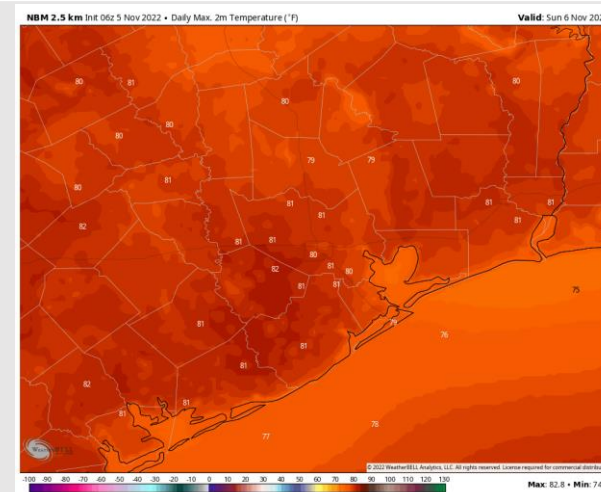
## Precip Forecast: 2 PM-CST



Wind Speed  
7 PM-CST



High Temps  
Sunday



# Houston Pilots: Mon. 11/7/2022

## Forecast Discussion

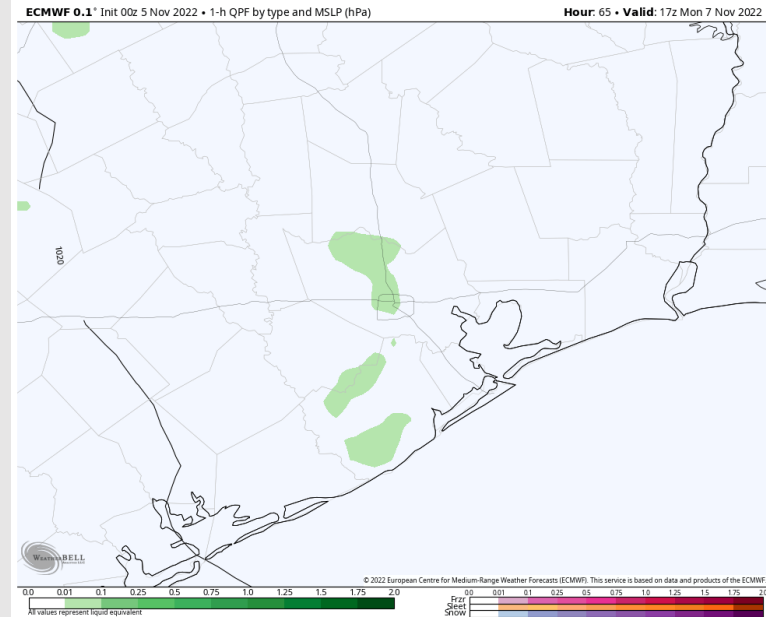
**Precip:** Anticipating dry conditions through most of the morning Monday. From 10AM-3PM-CST scattered showers will move through with better coverage just west of stations.

**Wind:** Sustained winds out of the SE/E throughout the whole day. Winds N of Morgan's Point will be 4-9 kts with winds S of Morgan's point 9-13 kts.

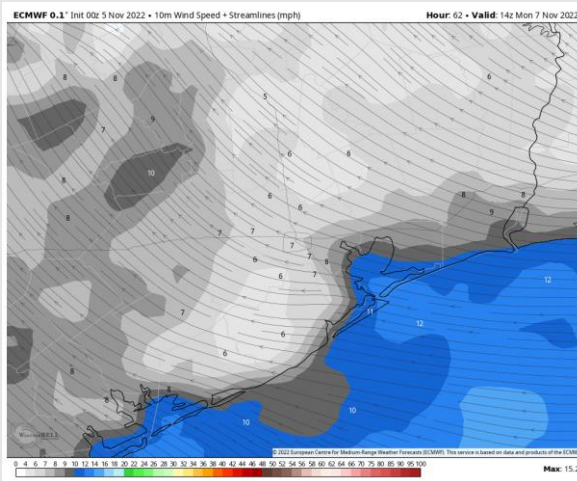
**Temps:** High temps in the mid 70s F at the boarding station and in the low 80s F at all other stations.

**Visibility:** Not anticipating any visibility concerns at this time.

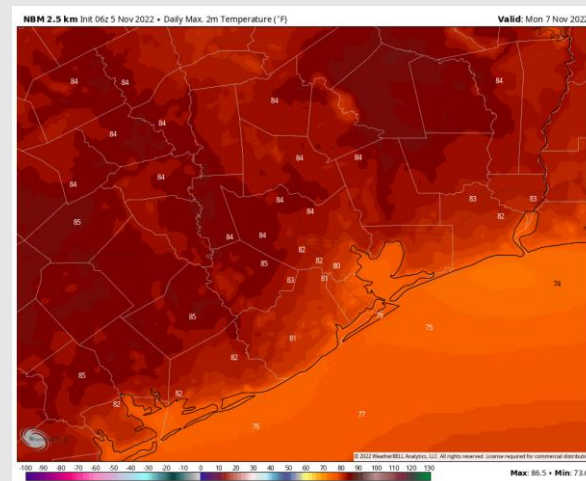
## Precip Forecast: 11 AM CST



Wind Speed  
7 AM CST



High Temps  
Monday

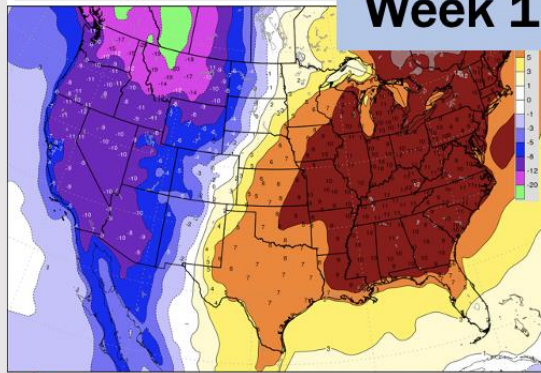




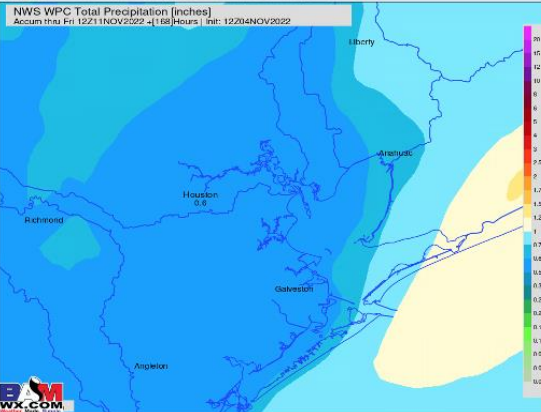
# Houston Pilots: 11/4/22

BAM EPS+GEFS 7-Day Average | 2-meter Temperature Anomaly [°F]  
Init: Fri 06Z04NOV2022 -1168 HOURS -> Valid Fri 00Z11NOV2022

## Week 1

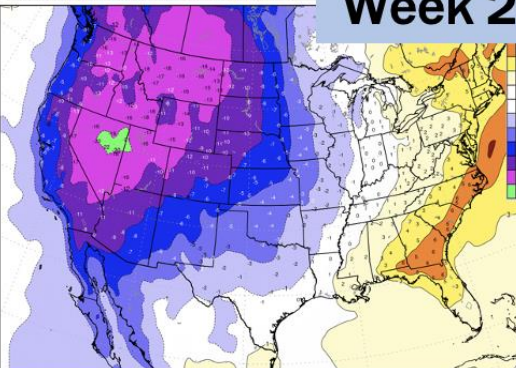


NWS WPC Total Precipitation (inches)  
Accum thru Fri 12Z11NOV2022 -1168 HOURS -> Valid Fri 00Z11NOV2022

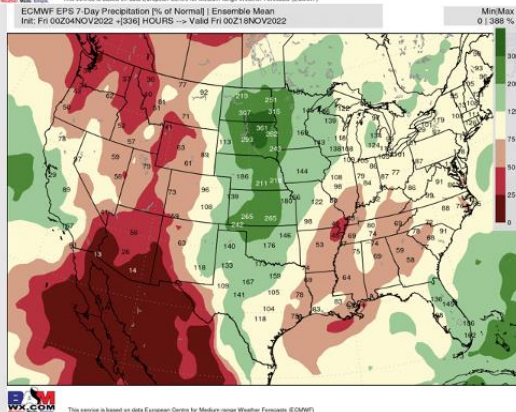


ECMWF EPS 7-Day Average - 2-meter Temperature Anomaly [°F]  
Init: Fri 06Z04NOV2022 -1306 HOURS -> Valid Fri 00Z18NOV2022

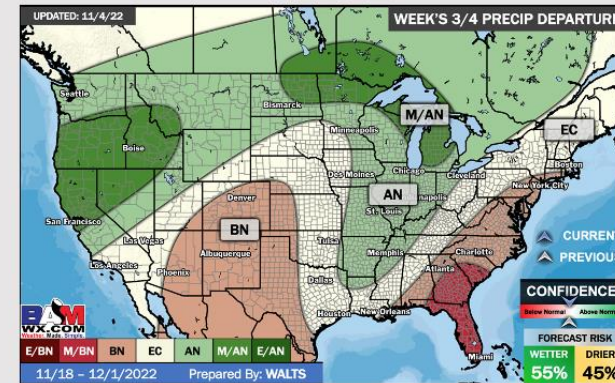
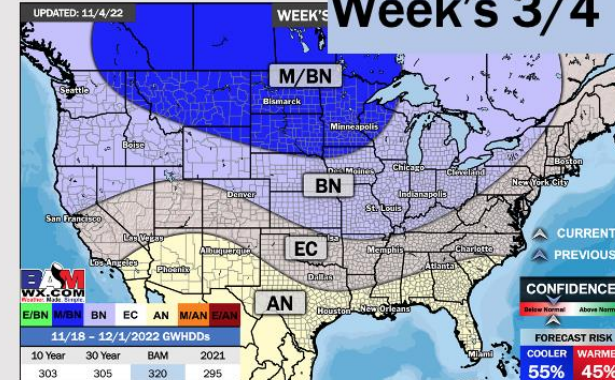
## Week 2



ECMWF EPS 7-Day Precipitation [% of Normal] | Ensemble Mean  
Init: Fri 06Z04NOV2022 -1306 HOURS -> Valid Fri 00Z18NOV2022



## Week's 3/4



- Temperatures expected to be above normal next week. More widespread chances of precipitation will be today.
- Week 2 to feature normal temperatures and below normal precipitation.
- The weeks ¾ timeframe into November looks to feature above normal temperatures and normal risks for precipitation.