

Houston Pilots Forecast Package



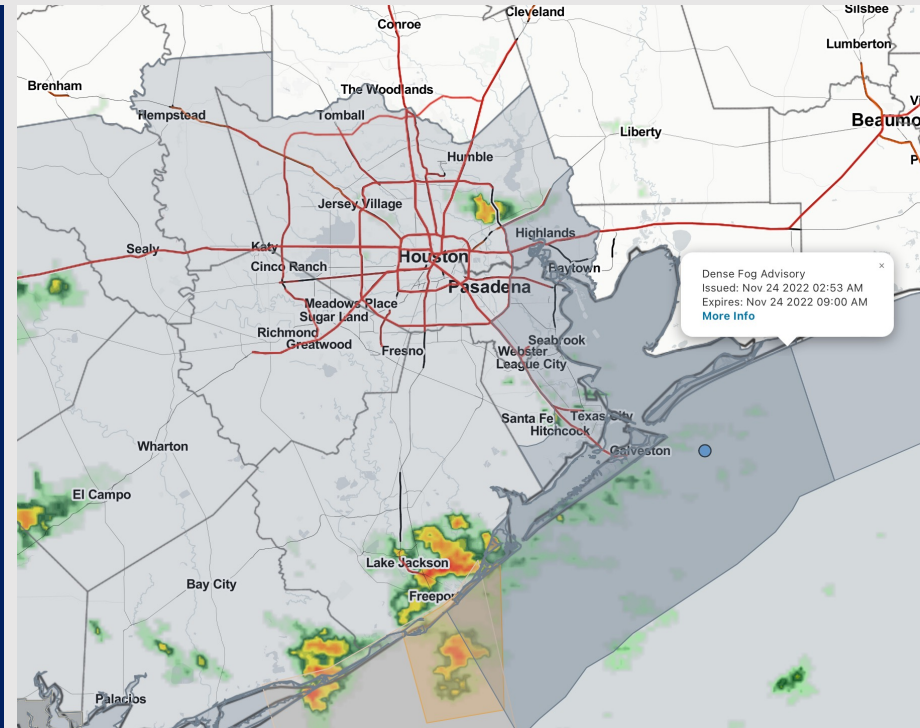
Updated: 8:00 AM CT

Thursday, November 24, 2022

Forecaster: Alyssa McClung

Weather Headlines

- Anticipating showers/thunderstorms to continue to work in, increasing in coverage later this morning
- While lower confidence in exact time range where fog will dissipate, would anticipate areas of dense fog to continue to be possible and impactful for ALL locations through at least 10AM-CT, with fog gradually becoming more patchy throughout the day. Fog will likely become dense again later this evening and last until 11 PM – 12 AM.
- MORE DETAILS ON CURRENT FOG BELOW. SEE VISIBILITY SLIDE
- Not anticipating any tropical activity concerns over the next 10 days. Entering the last week of Atlantic Hurricane Season.



Radar/NWS Alerts: 7:30 AM CT



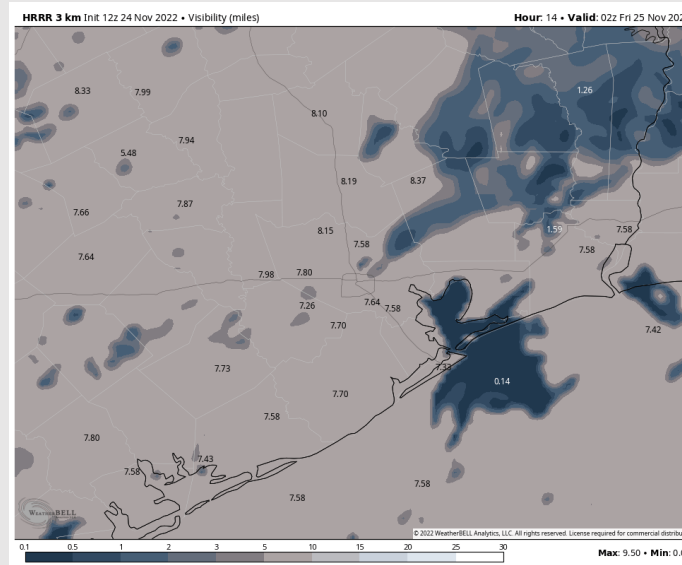
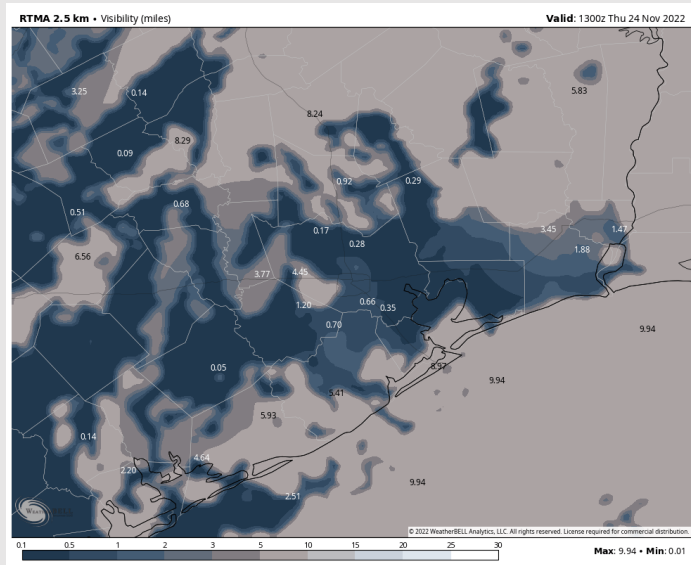
As always, please do not hesitate to reach out to us with any forecast questions via the chat option on the Weather Porthole or our on-call number, **(317)-560-8122** press 1 for forecast questions.

Houston Pilots Visibility Report

Current Visibility as of 5:30AM-CT

8PM-CT THU Visibility (miles)

Confidence



Above
Normal

Below
Normal

Reduced Visibility Threat

Current – 12 AM FRI

Medium-
High

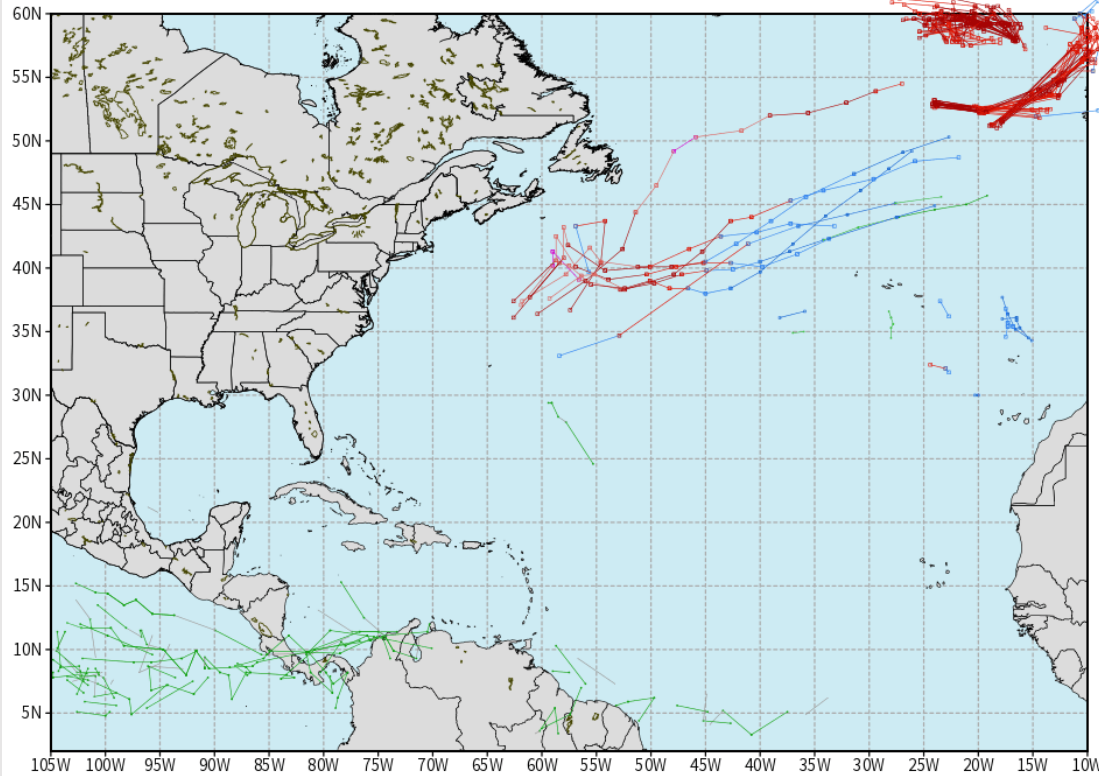
- Areas of Patchy Fog / Dense Fog currently impacting all pilot locations with visibilities less than .25 miles.
- Confidence is low for when exactly this fog will end. Favoring fog to become less dense after 10 AM today, however it is possible this fog lingers through the afternoon becoming more dense into the early evening where it will continue through 11 PM / 12 AM.
- Mist may mix in with fog as better moisture moves in from the southwest as we get later into the morning.

Houston Pilots Extended Range Tropical Report

European Data Tracks Next 10 Days

ECMWF ATLANTIC EPS Cyclone Locations --> Next [10-days]
INIT: 00Z 24 NOV 2022 --> UNTIL 00Z 04 DEC 2022

o-o ENSEMBLE MEAN
o-o 1000 - 1010 hPa
o-o 980 - 999 hPa
o-o 960 - 979 hPa
o-o 950 - 959 hPa
o-o < 950 hPa



weathermodels.com

**Not anticipating any tropical activity
for SE TX over the next 10 days.**

Confidence

Above
Normal

Below
Normal

Houston Pilots Visibility Report



Time	Thu 3am	Thu 4am	Thu 5am	Thu 6am	Thu 7am	Thu 8am	Thu 9am	Thu 10am	Thu 11am	Thu 12pm	Thu 1pm	Thu 2pm	Thu 3pm	Thu 4pm	Thu 5pm	Thu 6pm	Thu 7pm	Thu 8pm	Thu 9pm	Thu 10pm	Thu 11pm	Fri 12am	Fri 1am	Fri 2am	Fri 3am	Fri 4am	Fri 5am	Fri 6am	Fri 7am	Fri 8am	Fri 9am	Fri 10am	Fri 11am	Fri 12pm	Fri 1pm	Fri 2pm
610 Bridge	0.42	0.74	1	2	2	1	2	3	3	3	4	4	2	4	4	4	4	4	3	2	2	0.72	2	2	3	2	0.94	2	0.94	1	2	3	3	3	3	3
Kinder 1	0.42	0.74	1	2	2	1	2	3	3	3	4	4	2	4	4	4	4	5	4	4	4	1	2	2	4	4	2	3	2	2	4	4	4	5	5	4
Greens Bayou	0.39	0.62	0.97	1	2	1	2	3	3	3	3	4	2	4	4	4	4	5	6	6	6	3	5	5	6	6	5	5	5	5	6	6	6	6	6	6
Shell Crude	0.3	0.31	0.31	1	2	1	2	3	3	4	2	4	2	4	4	4	4	5	8	8	8	5	8	8	8	8	8	8	9	9	8	9	8	8	8	8
Lynchburg Ferries	0.29	0.29	0.25	0.78	2	1	2	3	3	4	2	4	2	3	4	4	4	5	8	8	9	6	8	8	8	8	8	8	9	9	8	9	8	8	8	8
Exxon 3	0.29	0.29	0.25	2	2	2	2	3	3	4	3	4	2	3	4	4	4	5	8	8	9	7	8	8	8	8	8	8	9	9	8	9	8	8	8	8
Morgans Point	0.29	0.29	0.25	2	2	2	2	3	4	4	3	4	2	3	4	4	4	5	8	8	9	8	8	8	8	8	8	8	9	9	8	9	8	8	8	8
75/76	0.29	0.39	2	3	3	2	2	3	4	4	4	4	4	4	4	4	4	5	8	8	9	8	8	8	8	8	8	8	9	9	8	9	8	8	8	8
63/64	0.68	0.77	2	3	3	2	2	4	4	4	4	4	4	4	4	4	4	4	8	8	9	8	8	8	8	8	8	8	9	9	8	9	8	8	8	8
51/52	1	1	3	4	3	2	3	4	4	4	4	4	4	3	4	4	4	4	6	8	8	8	8	8	8	8	8	8	9	9	8	9	8	8	8	8
37/38	3	4	4	4	4	3	4	4	4	4	4	4	4	4	3	3	3	3	5	8	7	8	8	8	8	8	8	8	9	9	8	9	8	8	8	8
25/26	4	4	4	5	5	4	4	5	4	4	4	4	4	4	2	1	3	3	4	8	7	8	8	8	8	8	8	8	9	9	8	9	8	8	8	8
11/12	4	4	5	5	5	4	4	5	4	4	4	4	4	4	4	1	2	1	1	8	7	8	8	8	8	8	8	8	9	9	8	9	8	8	8	8
1 & 2 Bravo	4	5	5	6	5	4	4	5	4	4	4	4	4	4	4	3	3	0.9	0.48	4	7	8	8	8	8	8	8	8	9	9	8	9	8	8	8	8

Houston Pilots Wind Report



Example

Sustained wind 13 Knots
Gusts 18 Knots
Wind from the N

WS: 13
G:18
N

Time	Thu 3am	Thu 4am	Thu 5am	Thu 6am	Thu 7am	Thu 8am	Thu 9am	Thu 10am	Thu 11am	Thu 12pm	Thu 1pm	Thu 2pm	Thu 3pm	Thu 4pm	Thu 5pm	Thu 6pm	Thu 7pm	Thu 8pm	Thu 9pm	Thu 10pm	Thu 11pm	Fri 12am	Fri 1am	Fri 2am	Fri 3am	Fri 4am	Fri 5am	Fri 6am	Fri 7am	Fri 8am	Fri 9am	Fri 10am	Fri 11am	Fri 12pm	Fri 1pm	Fri 2pm	
610 Bridge	7	6	5	6	6	7	18	18	19	16	18	15	13	14	9	10	10	11	11	12	13	13	12	12	12	12	12	13	14	15	15	15	17	17	17		
	ESE	ESE	ESE	ESE	ESE	ESE	ESE	ESE	SE	SE	SSE	SE	SE	WSW	WSW	NE	NE	NE	NE	NE	NE	NE	NE	NE	NE	NE	NE	NE	NE	NE	NE	NE	NE	NE	NE		
Kinder 1	7	6	6	6	6	7	6	6	8	7	9	8	6	9	4	6	6	6	6	5	5	6	6	6	6	6	6	7	7	7	8	9	9	9	9	9	
	ESE	ESE	ESE	ESE	ESE	ESE	ESE	ESE	ESE	SE	SE	SE	ESE	SSW	WSW	NE	NE	NE	NE	NE	NE	NE	NE	NE	NE	NE	NE	NE	NE	NE	NE	NE	NE	NE	NE		
Greens Bayou	7	6	6	6	6	6	6	8	9	9	10	8	8	8	4	6	6	6	6	5	5	5	5	6	6	6	6	6	7	8	9	9	9	9	9		
	ESE	ESE	ESE	ESE	ESE	ESE	ESE	ESE	ESE	SE	SE	SE	ESE	SE	SSE	NE	NE	NE	NE	NE	NE	NE	NE	NE	NE	NE	NE	NE	NE	NE	NE	NE	NE	NE	NE		
Shell Crude	7	6	5	6	6	6	7	8	9	11	10	7	9	9	4	6	6	6	5	5	5	5	5	6	6	6	6	7	7	7	8	9	9	9	9	10	
	ESE	ESE	E	ESE	ESE	ESE	ESE	ESE	ESE	SE	SE	SE	ESE	SE	SW	NE	NE	NE	NE	NE	NE	NE	NE	NE	NE	NE	NE	NE	NE	NE	NE	NE	NE	NE	NE		
Lynchburg Ferries	6	5	5	7	5	6	8	8	8	12	11	7	9	6	4	6	6	6	6	5	6	6	6	6	6	6	6	7	7	7	8	9	9	9	10	10	
	ESE	ESE	E	ESE	ESE	E	ESE	ESE	SE	SE	SSE	SE	SE	SSE	NE	NE	NE	NE	NE	NE	NE	NE	NE	NE	NE	NE	NE	NE	NE	NE	NE	NE	NE	NE	NE		
Exxon 3	6	4	5	7	5	6	8	8	10	12	11	9	9	6	8	6	6	6	6	6	6	6	6	6	7	6	7	7	7	8	9	9	9	9	10	10	
	ESE	E	ESE	ESE	ESE	E	ESE	ESE	SE	SE	SSE	SSE	SE	SE	S	NE	NE	NE	NE	NE	NE	NE	NE	NE	NE	NE	NE	NNE	NE	NE	NE	NE	NE	NE	NE		
Morgans Point	7	5	7	8	6	7	8	9	11	13	11	13	11	10	13	5	6	6	6	6	7	7	7	7	7	7	8	8	8	8	9	10	9	10	10	10	
	ESE	E	E	ESE	E	E	E	ESE	ESE	SE	ESE	SSE	SE	SE	S	NE	NE	NE	NE	NE	NE	NE	NE	NE	NE	NE	NE	NNE	NE	NE	NE	NE	NE	NE	NE		
75/76	9	7	8	8	7	8	10	10	11	13	13	14	10	13	13	6	6	7	8	8	9	8	9	9	9	9	9	10	10	10	10	11	11	11	11	12	11
	ESE	E	E	E	E	E	E	ESE	ESE	SE	ESE	SE	SE	SE	SSE	NE	NE	NE	NE	NE	NE	NE	NE	NE	NE	NE	NE	NNE	NE	NE	NE	NE	NE	NE	NE	NE	
63/64	9	8	8	8	8	9	10	10	12	12	15	14	11	13	10	6	7	7	8	9	9	9	9	10	10	10	10	10	11	11	12	12	12	12	13	12	
	ESE	E	E	E	E	E	E	ESE	ESE	ESE	ESE	SE	SE	SE	SSE	NE	NE	NE	NE	NE	NE	NE	NE	NE	NE	NE	NE	NNE	NE	NE	NE	NE	NE	NE	NE	NE	
51/52	8	8	8	8	8	10	10	12	12	12	15	14	12	11	8	6	7	7	8	9	9	9	9	10	10	10	10	11	11	11	12	12	12	12	13	12	
	ESE	E	ESE	E	ESE	E	E	ESE	ESE	ESE	ESE	SE	SE	SE	SSE	NE	NE	NNE	NE	NE	NE	NE	NE	NE	NE	NE	NE	NE	NE	NE	NE	NE	NE	NE	NE		
37/38	8	7	8	8	8	10	10	12	12	12	14	13	11	9	6	6	7	7	8	9	9	9	9	10	10	10	11	11	11	12	12	13	12	13	13	13	
	ESE	ESE	ESE	ESE	ESE	ESE	E	ESE	ESE	ESE	ESE	SE	SE	SE	S	NNE	NE	NNE	NE	NE	NE	NE	NE	NE	ENE	NE	NE	NE	NE	NE	NE	NE	NE	NE	NE		
25/26	8	7	8	8	8	9	11	12	12	12	14	13	10	7	6	6	7	6	7	8	9	9	9	10	10	10	11	11	11	12	12	13	13	12	13		
	ESE	ESE	ESE	ESE	ESE	ESE	ESE	ESE	ESE	ESE	ESE	SE	SE	SE	SSE	NE	NE	NNE	NE	NE	NE	NE	NE	NE	ENE	ENE	NE	NE	NE	NE	NE	NE	NE	NE	NE		
11/12	9	9	9	9	10	9	11	13	13	12	14	13	10	7	6	6	7	7	7	8	9	9	10	10	10	11	11	12	12	12	13	13	13	13	14	14	
	ESE	ESE	ESE	E	ESE	ESE	ESE	ESE	ESE	ESE	ESE	SE	SE	SE	SSE	E	NE	NNE	NE	NE	NE	NE	NE	ENE	ENE	NE	NE	NE	NE	NE	NE	NE	NE	NE	NE		
1 & 2 Bravo	11	10	10	10	13	12	13	14	15	11	16	13	13	8	7	8	8	8	7	9	10	10	11	12	12	13	13	13	14	14	14	14	14	15	15		
	ESE	ESE	ESE	E	ESE	ESE	ESE	ESE	ESE	ESE	ESE	SE	ESE	SSE	ESE	NE	NNE	NE	NE	NE	NE	NE	NE	NE	ENE	ENE	ENE	NE	NE	NE	NE	NE	NE	NE	ENE		

See slides below for official thoughts on winds.

Houston Pilots: Thur. 11/24/2022

Forecast Discussion

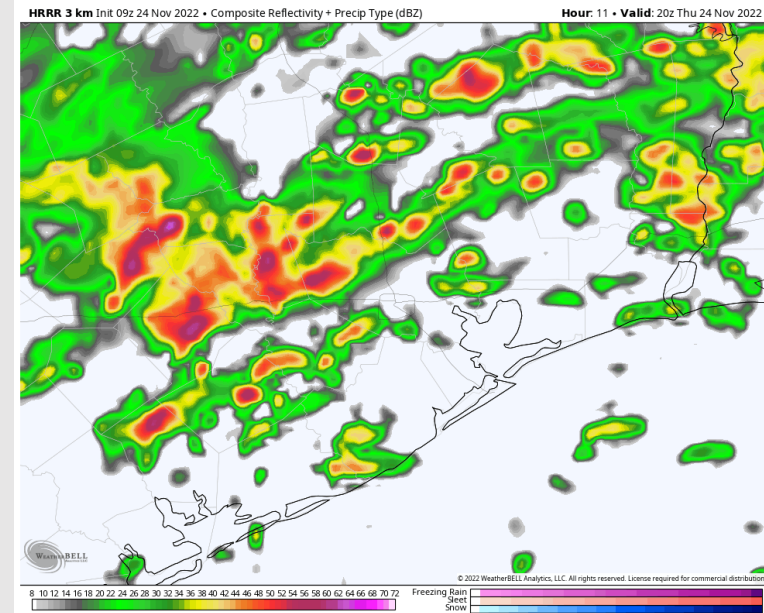
Precip: Anticipating a rainy day. Scattered showers/thunderstorm coverage will increase for the region around 10 AM and become fairly widespread until 7 PM (~80%). From 7 PM through the rest of the night, rain chances will drop to ~40%. A few locally stronger thunderstorms capable of producing downpours, lightning and a low end risk for an isolated tornado cannot be ruled out.

Wind: Favoring winds out of the ESE for the morning and early afternoon. Winds N of Morgan's Point will be at 3 – 7 kts and S of Morgan's Point will be 12–18 kts. After 12 PM winds will subside to 4 – 9 kts N of Morgan's Point. Winds will become more variable after 5 PM until coming out of the NE by 7 PM. Winds near the boarding station seeing between 21 – 26 kts after 6 PM where they continue the rest of the night.

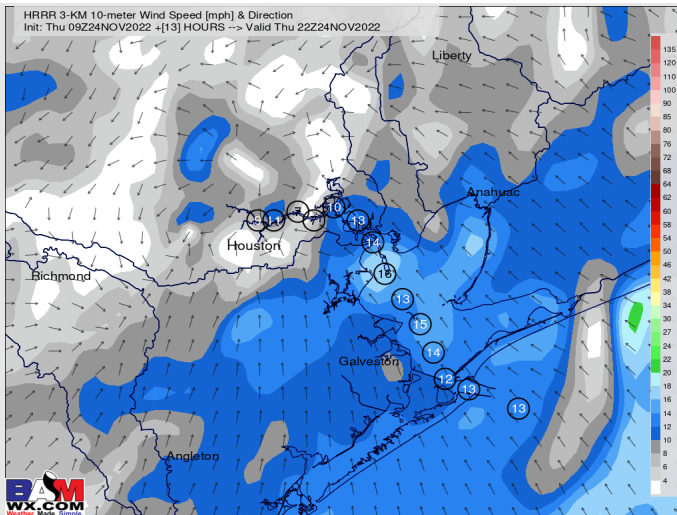
Temps: Warming trend continues. High temps will be in the low/mid 70s F across all stations.

Visibility: The heaviest Patchy Dense Fog is favored to continue through 9/10AM-CT, however it is possible for patchy fog to continue throughout the day with density increasing as we get into the early afternoon. Low confidence on exact timing for when this fog will become more dense. (MORE DETAILS ON VISIBILITY SLIDE!)

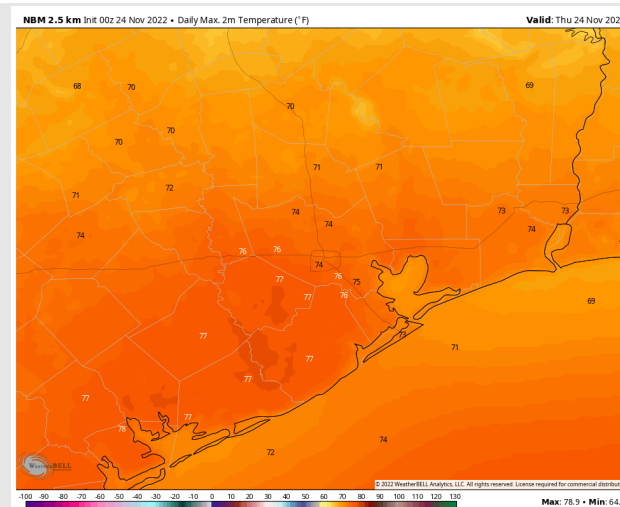
Precip Forecast: 2 PM CT



Wind Speed 4 PM CT



High Temps Today



Houston Pilots: Fri. 11/25/2022

Forecast Discussion

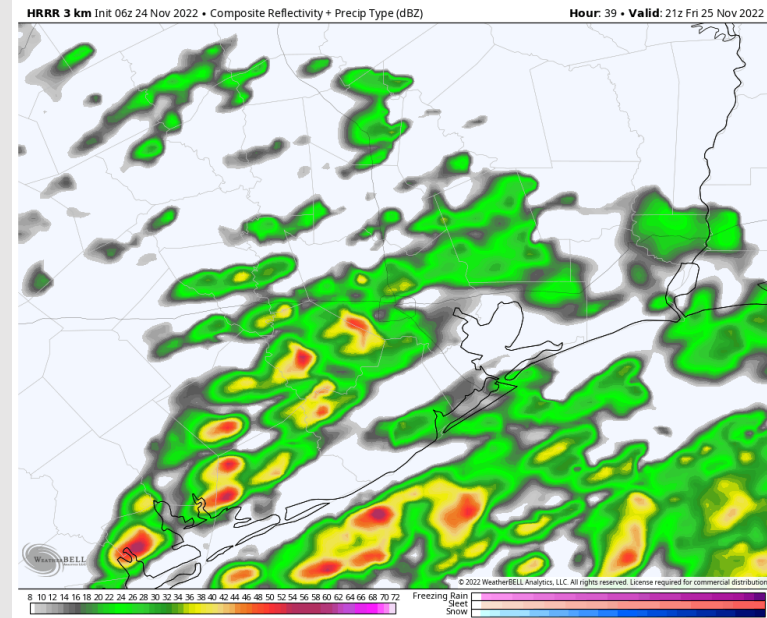
Precip: A slight chance (30%) for exiting showers and storms in the early morning from 12 AM – 1 AM. Then anticipating a dry slot from 1 AM – 9 AM. After 9 AM, more widespread showers and storms will enter the region (80 % chance) and last through the rest of the night. Locally heavy downpours and lightning will be possible under stronger storms.

Wind: Winds will be out of the NE for the entire day. Winds N of Morgan's Point will start off at 4-9 kts and S of Morgan's Point at 12-18 kts. Winds will then increase by 1 PM to 12 – 17 kts N of Morgan's Point, and 17 – 23 kts S of Morgan's Point and remain elevated from 1 PM – 12 AM. **Wind gusts could be over 30+ kts after 3 PM.**

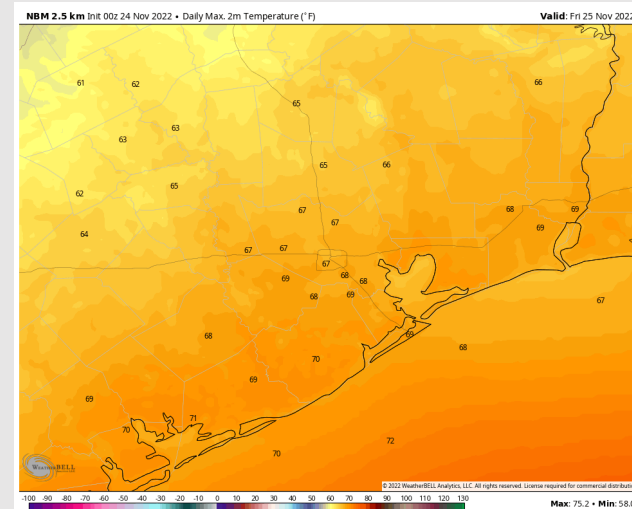
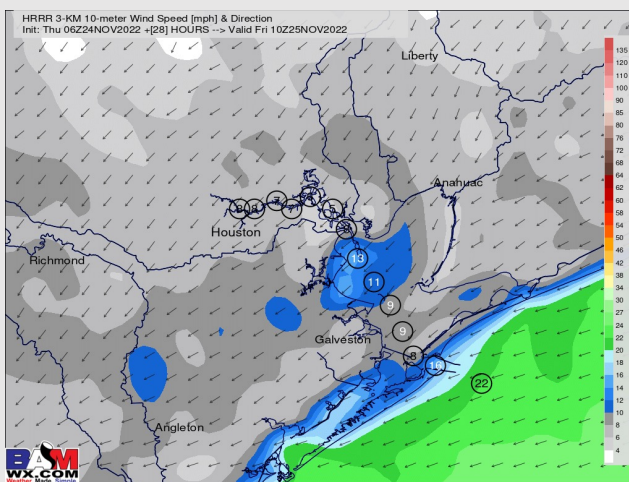
Temps: High temps Friday will be in the high 60s F/near 70 F across all stations.

Visibility: May be brief periods of reduced visibility under stronger storms.

Precip Forecast: 3 PM CT



Wind Speed
4 AM CT



High Temps
Friday

Houston Pilots: sat. 11/26/2022

Forecast Discussion

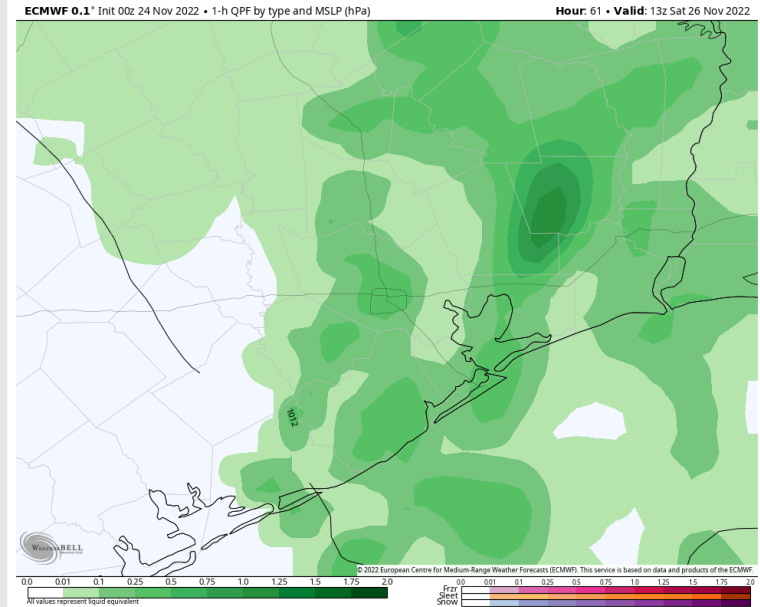
Precip: Widespread showers/storms (80% chance) will continue throughout most of the AM hours on Saturday. By 9 AM, chances decrease to 40% as showers/storms become more scattered throughout the area. From 12 PM throughout the rest of the day, anticipating dry conditions.

Wind: Winds will shift out of the SE by midnight and continue to veer until coming out of the SW by 11 AM for the rest of the day. Winds at 9-14 kts N of Morgan's Point for the entire day and 17-23 kts until 1 PM. After 1 PM, winds calm a tad to 14-20 kts S of Morgan's Point for the rest of the day Saturday.

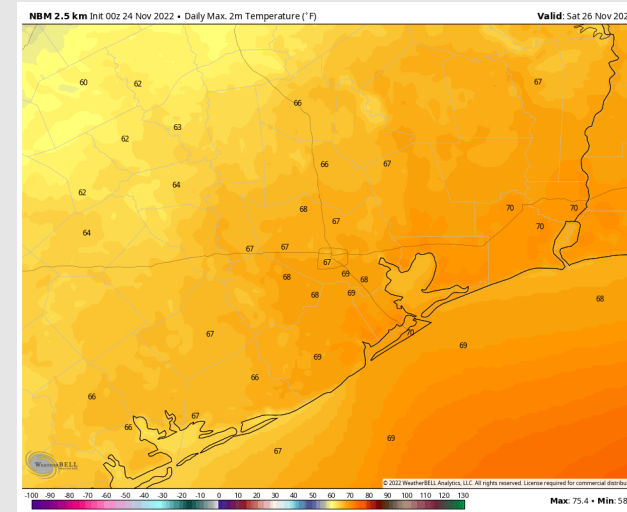
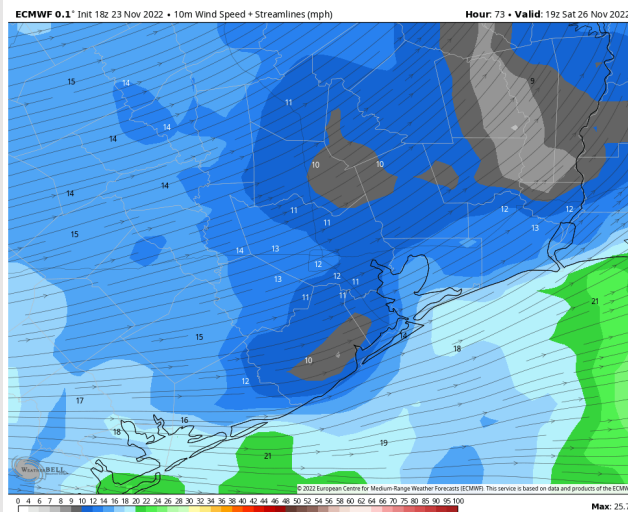
Temps: High temperatures on Saturday in the high 60s F for all stations.

Visibility: Not anticipating any visibility concerns at this time.

Precip Forecast: 7 AM CT



Wind Speed
1 PM CT

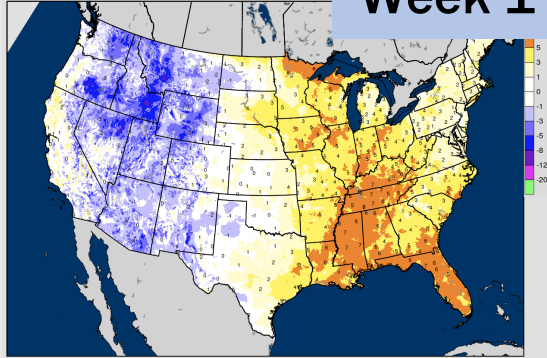


High Temps
Saturday

Houston Pilots: 11/24/22

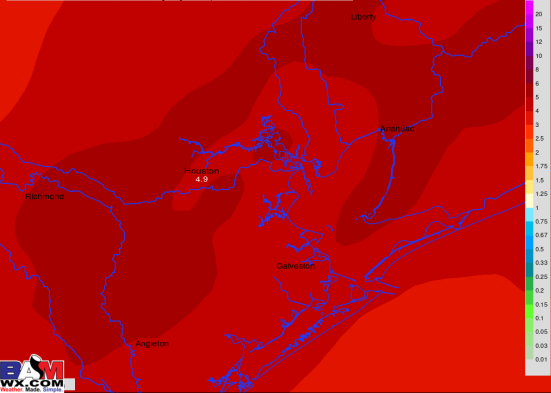
BAMCast Average Temperature Anomaly [°F]
 7-DAY AVG for Wed 23NOV2022 thru Tue 29NOV2022 Days 1 to 7

Week 1



BAM
WX.COM

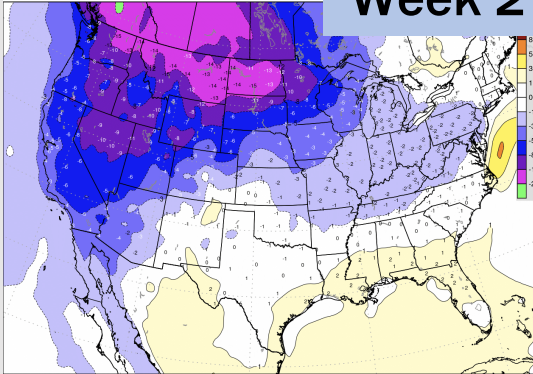
NWS WPC Total Precipitation [inches]
 Accum thru Wed 18/23NOV2022 +162Hours | Init: 18/23NOV2022



BAM
WX.COM

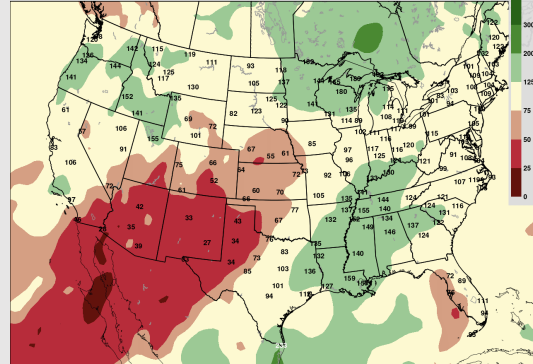
ECMWF EPS 7-Day Average - 2-meter Temperature Anomaly [°F]
 Init: Wed 00/23NOV2022 +360 HOURS -> Valid Thu 00/28DEC2022

Week 2



BAM
WX.COM

BAM EPS+GEFS+GEPS Precipitation Anomaly [%]
 7-Day Anomaly -> Valid Wed 07DEC2022 +14 Days | Init: 00/23NOV2022

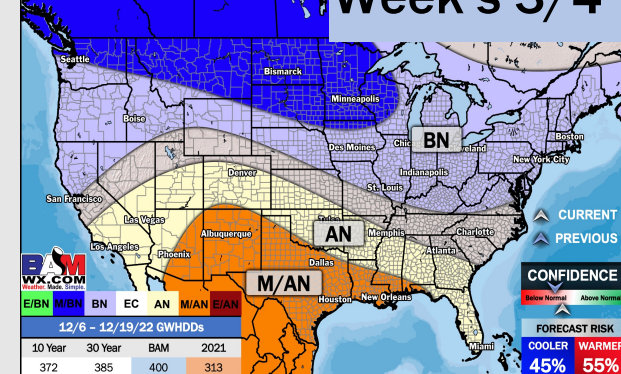


BAM
WX.COM

UPDATED: 11/22/22

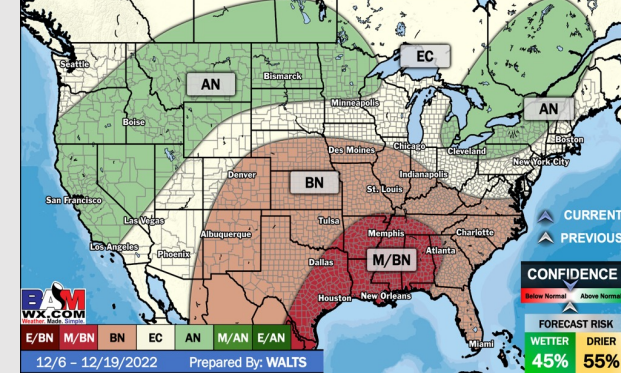
WEEK'S

Week's 3/4



UPDATED: 11/22/22

WEEK'S 3/4 PRECIP DEPARTURE



- Temperatures expected to be above normal this week. A quieter mid-week is followed by rain chances Thursday/ Friday.
- Week 2 is expected to be near normal for temperatures and near normal for rain chances into early December.
- The weeks ³/₄ timeframe looks to feature above normal temperatures and below normal risks for precipitation.