

Houston Pilots Forecast Package



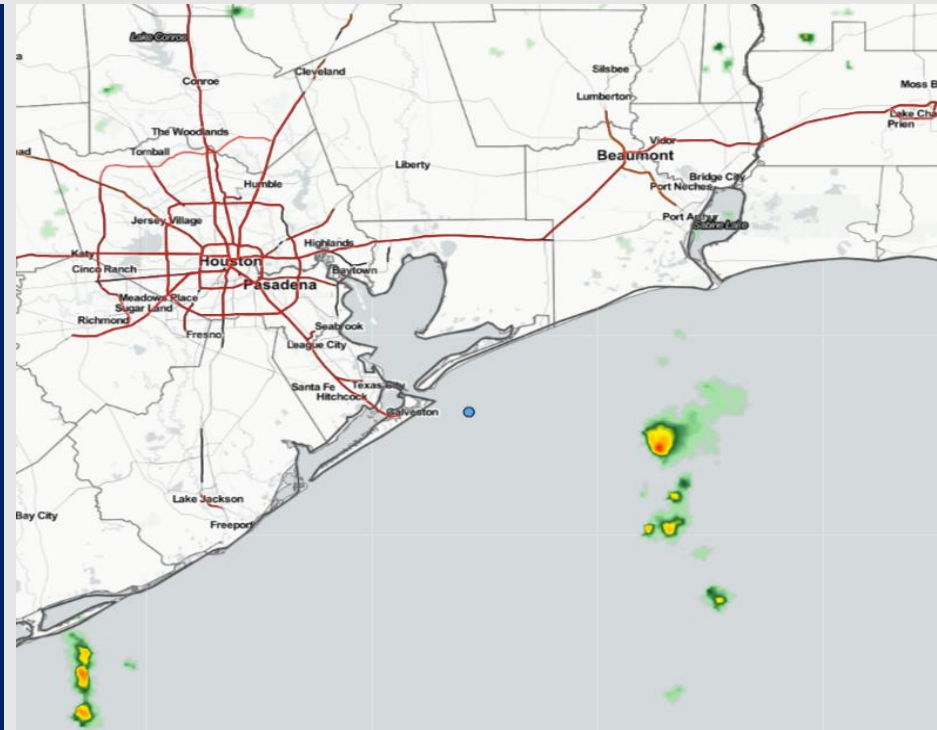
Updated: 6:10 AM CT

Wednesday, November 3, 2022

Forecaster: Will Danby

Weather Headlines

- Scattered/isolated rain chances over the next couple days with highest chances late Friday night into Saturday morning.
- No direct tropical activity is favored in SE TX over the next 7-10 days.
- Stronger winds expected Friday with storm a system moving in. See additional slides for more details.
- Areas of reduced visibility possible this morning. See visibility report slide for more details.



Radar/ NWS Alerts: 6:00 AM CT



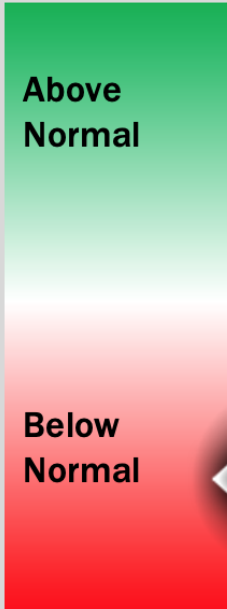
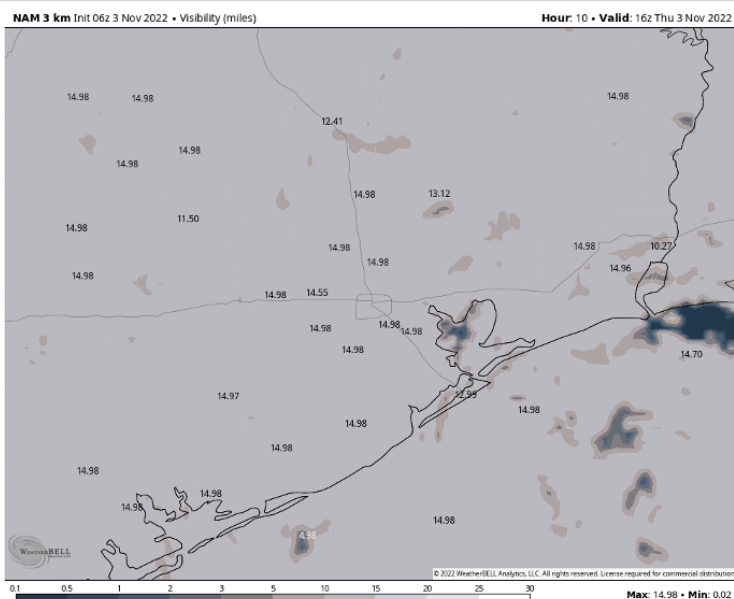
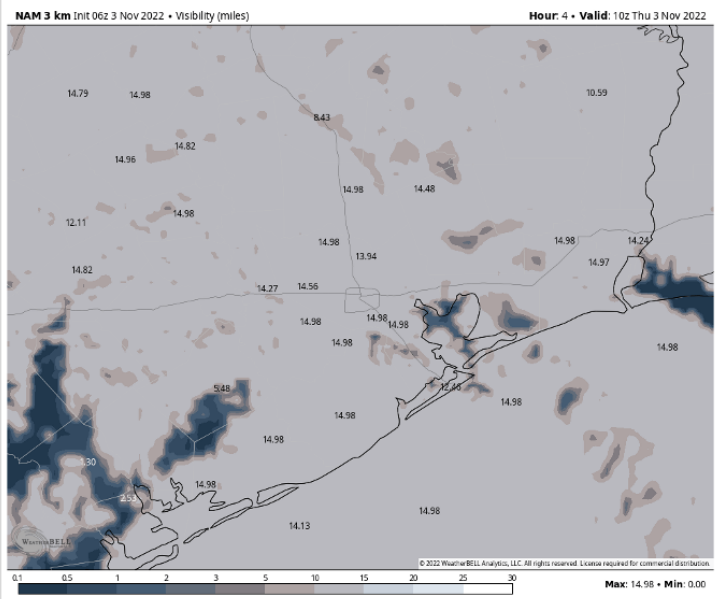
As always, please do not hesitate to reach out to us with any forecast questions via the chat option on the Weather Porthole or our on-call number, **(317)-560-8122** press 1 for forecast questions.

Houston Pilots Visibility Report



5 AM THU Visibility (miles) 11 AM THU Visibility (miles)

Confidence



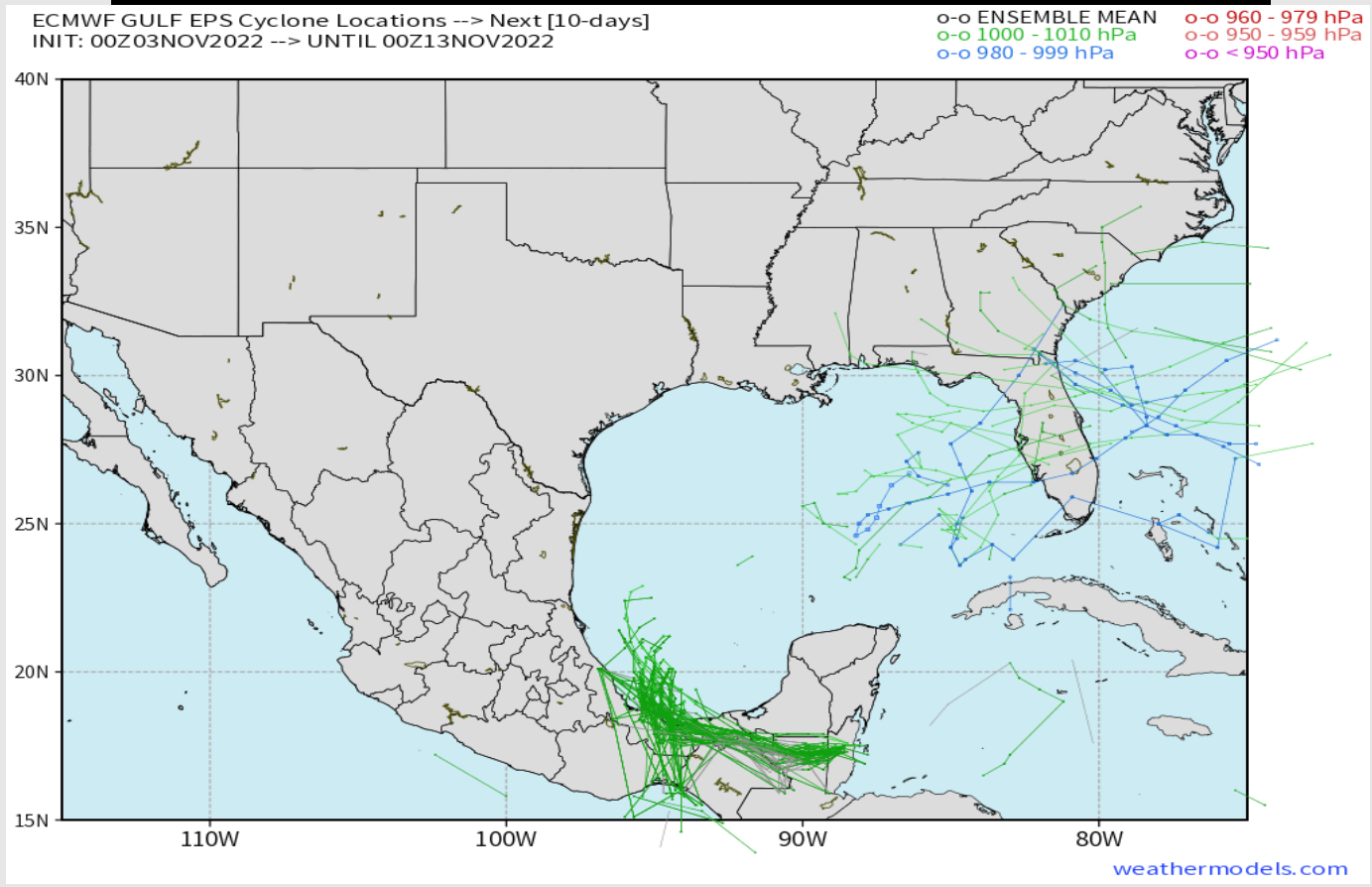
Reduced Visibility Threat

Current – 11 AM

Low-Medium

- Pockets of reduced visibility being noted this morning with visibilities in spots of 5-6 miles.
- Given lower levels of the atmosphere being saturated, pockets of reduced visibility via patchy fog, mist, drizzle, will be possible out through mid-late morning.
- These limited visibilities will be possible for all stations but does not look to be a continuous widespread threat.
- Visibilities dropping to 2-4 miles in a hit or miss nature will be possible, but any further reduction is not favored.

European Data Tracks Next 10 Days



There are no tropical threats anticipated for SE TX over the next 7-10 days.

Confidence



Above Normal Below Normal

Houston Pilots Visibility Report



Time	11-03-2022 Thu 4am	11-03-2022 Thu 5am	11-03-2022 Thu 6am	11-03-2022 Thu 7am	11-03-2022 Thu 8am	11-03-2022 Thu 9am	11-03-2022 Thu 10am	11-03-2022 Thu 11am	11-03-2022 Thu 12pm	11-03-2022 Thu 1pm	11-03-2022 Thu 2pm	11-03-2022 Thu 3pm	11-03-2022 Thu 4pm	11-03-2022 Thu 5pm	11-03-2022 Thu 6pm	11-03-2022 Thu 7pm	11-03-2022 Thu 8pm	11-03-2022 Thu 9pm	11-03-2022 Thu 10pm	11-03-2022 Thu 11pm	11-04-2022 Fri 12am	11-04-2022 Fri 1am	11-04-2022 Fri 2am	11-04-2022 Fri 3am	11-04-2022 Fri 4am	11-04-2022 Fri 5am	11-04-2022 Fri 6am	11-04-2022 Fri 7am	11-04-2022 Fri 8am	11-04-2022 Fri 9am	11-04-2022 Fri 10am	11-04-2022 Fri 11am	11-04-2022 Fri 12pm	11-04-2022 Fri 1pm	11-04-2022 Fri 2pm	11-04-2022 Fri 3pm									
Houston Pilots N - 610 Bridge	7.632	8.442	6.915	6.759	5.529	6.067	10.000	10.000	10.000	10.000	10.000	10.000	10.000	10.000	10.000	10.000	10.000	10.000	10.000	10.000	10.000	10.000	10.000	10.000	10.000	7.919	8.791	9.033	10.000	9.033	7.919	6.964	6.964	6.964	6.964	6.920	6.930	9.033	10.000	10.000	10.000	10.000	10.000		
Houston Pilots M - Kinder 1	8.368	9.038	6.919	6.890	5.529	6.067	10.000	10.000	10.000	10.000	10.000	10.000	10.000	10.000	10.000	10.000	10.000	10.000	10.000	10.000	10.000	10.000	10.000	10.000	10.000	7.940	9.033	9.033	10.000	9.033	7.940	7.212	7.212	7.212	7.212	6.700	7.449	9.033	10.000	10.000	10.000	10.000	10.000		
Houston Pilots L - Greens Bayou	9.038	9.038	6.915	6.890	5.359	5.750	10.000	10.000	10.000	10.000	10.000	10.000	10.000	10.000	10.000	10.000	10.000	10.000	10.000	10.000	10.000	10.000	10.000	10.000	10.000	10.000	7.966	9.033	9.033	10.000	9.033	8.711	7.573	7.573	7.573	7.573	7.706	8.146	9.033	10.000	10.000	10.000	10.000	10.000	
Houston Pilots K - Shell Crude	10.000	9.170	6.919	6.890	4.937	4.967	10.000	10.000	10.000	10.000	10.000	10.000	10.000	10.000	10.000	10.000	10.000	10.000	10.000	10.000	10.000	10.000	10.000	10.000	10.000	10.000	7.999	9.033	9.033	10.000	9.033	8.240	8.033	8.033	8.033	8.033	8.988	9.033	9.033	10.000	10.000	10.000	10.000	10.000	
Houston Pilots J - Lynchburg Ferries	9.509	9.038	6.890	6.890	4.336	4.902	10.000	10.000	10.000	10.000	10.000	10.000	10.000	10.000	10.000	10.000	10.000	10.000	10.000	10.000	10.000	10.000	10.000	10.000	10.000	10.000	7.999	9.033	9.033	10.000	9.033	9.033	8.033	8.033	8.033	8.033	8.988	9.033	9.293	10.000	10.000	10.000	10.000	10.000	
Houston Pilots I - Exxon 3	10.000	10.000	6.890	6.890	3.948	4.785	10.000	10.000	10.000	10.000	10.000	10.000	10.000	10.000	10.000	10.000	10.000	10.000	10.000	10.000	10.000	10.000	10.000	10.000	10.000	10.000	9.041	9.407	9.623	10.000	9.407	9.041	9.222	8.033	8.033	8.033	8.988	9.033	9.033	10.000	10.000	10.000	10.000	10.000	
Houston Pilots H - Morgans Point	10.000	10.000	6.890	6.890	3.948	5.438	10.000	10.000	10.000	10.000	10.000	10.000	10.000	10.000	10.000	10.000	10.000	10.000	10.000	10.000	10.000	10.000	10.000	10.000	10.000	10.000	9.041	9.407	9.623	10.000	9.407	9.041	9.222	8.033	8.033	8.033	8.988	9.033	9.033	10.000	10.000	10.000	10.000	10.000	
Houston Pilots G - 75/76	10.000	10.000	6.890	6.890	4.902	5.936	10.000	10.000	10.000	10.000	10.000	10.000	10.000	10.000	10.000	10.000	10.000	10.000	10.000	10.000	10.000	10.000	10.000	10.000	10.000	10.000	9.424	9.424	9.623	10.000	9.424	9.088	9.222	9.122	8.536	9.122	8.988	9.033	9.033	10.000	10.000	10.000	10.000	10.000	
Houston Pilots F - 63/64	10.000	10.000	7.924	6.890	5.936	5.936	10.000	10.000	10.000	10.000	10.000	10.000	10.000	10.000	10.000	10.000	10.000	10.000	10.000	10.000	10.000	10.000	10.000	10.000	10.000	10.000	9.447	9.424	9.623	10.000	9.424	9.152	9.222	9.186	9.433	9.433	8.988	9.033	9.033	10.000	10.000	10.000	10.000	10.000	
Houston Pilots E - 51/52	10.000	10.000	7.924	6.890	5.936	5.936	10.000	10.000	10.000	10.000	10.000	10.000	10.000	10.000	10.000	10.000	10.000	10.000	10.000	10.000	10.000	10.000	10.000	10.000	10.000	10.000	9.558	9.558	9.429	10.000	9.558	9.152	10.000	10.000	10.000	10.000	8.988	9.033	9.033	9.617	9.926	9.469	9.469	9.328	
Houston Pilots D - 37/38	10.000	10.000	8.091	6.890	5.936	5.428	10.000	10.000	10.000	10.000	10.000	10.000	10.000	10.000	10.000	10.000	10.000	10.000	10.000	10.000	10.000	10.000	10.000	10.000	10.000	10.000	9.447	9.424	9.424	10.000	9.424	9.146	9.122	9.314	9.433	9.871	8.988	9.033	9.033	9.033	9.033	9.033	9.033	9.033	
Houston Pilots C - 25/26	10.000	10.000	10.000	6.890	5.936	4.902	10.000	10.000	10.000	10.000	10.000	10.000	10.000	10.000	10.000	10.000	10.000	10.000	10.000	10.000	10.000	10.000	10.000	10.000	10.000	10.000	9.447	9.033	9.033	10.000	9.033	9.146	8.549	9.314	9.433	9.871	8.988	9.033	9.033	9.033	9.033	9.033	9.012	8.310	9.033
Houston Pilots B - 11/12	10.000	10.000	10.000	6.890	5.936	4.902	10.000	10.000	10.000	10.000	10.000	10.000	10.000	10.000	10.000	10.000	10.000	10.000	10.000	10.000	10.000	10.000	10.000	10.000	10.000	10.000	9.033	9.033	9.033	10.000	9.033	8.337	8.988	9.314	9.314	10.000	8.988	8.485	9.033	9.033	9.033	9.033	7.999	7.999	8.283
Houston Pilots A - 1 & 2 Bravo	10.000	10.000	10.000	10.000	6.986	7.924	10.000	9.038	10.000	10.000	10.000	10.000	10.000	10.000	10.000	10.000	10.000	9.548	9.548	8.774	8.774	8.309	8.774	8.207	8.170	8.988	9.016	9.016	9.822	8.988	8.741	9.033	9.033	9.033	9.033	9.033	9.033	7.999	7.999	7.999	7.999	7.999			

Forecast Discussion

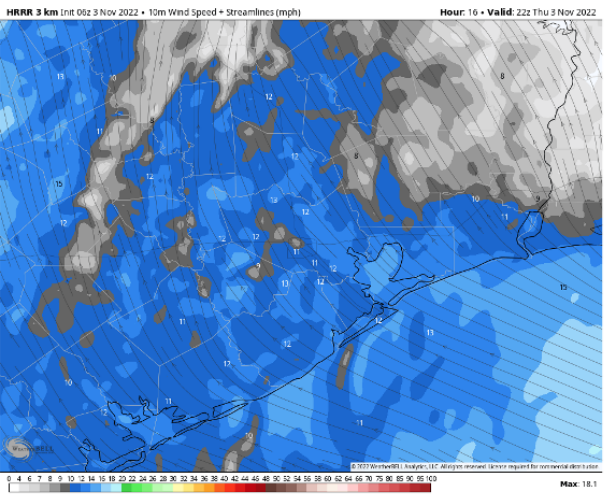
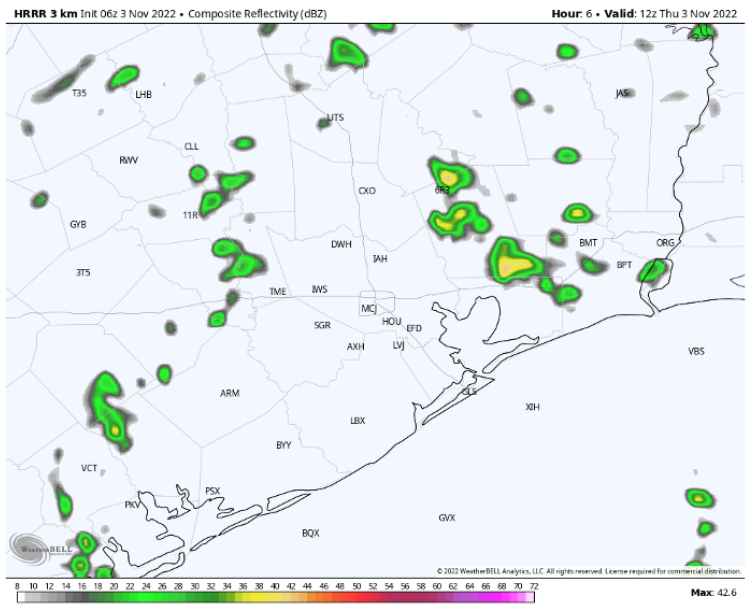
Precip: Anticipating a 20% chance for isolated hit and miss showers throughout the day today.

Wind: Winds out of the SE throughout the day. Winds at 4-9 kts for all stations AM. Around 2 PM, winds gradually pick up to 8-13 kts for all stations for the rest of the day.

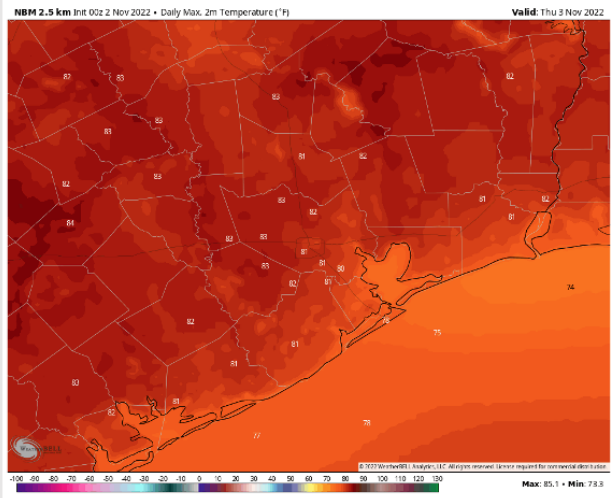
Temps: High temps will be in the mid 70s F near the boarding station and near 80 F for all other stations.

Visibility: Pockets of lower visibilities possible this AM. Check visibility report for more details.

Precip Forecast: 7 AM CT



Wind Speed
5 PM CT



High Temps
Thurs

Houston Pilots: Fri. 11/4/2022



Forecast Discussion

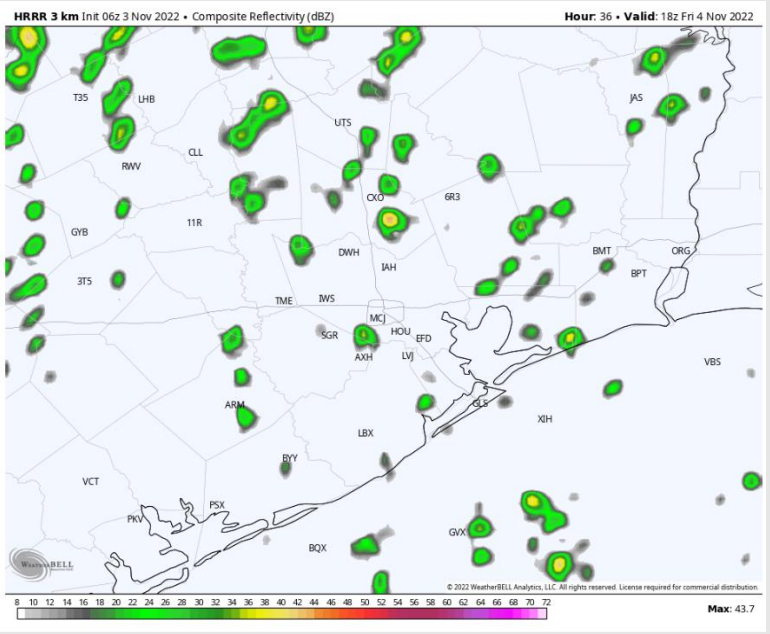
Precip: Anticipating dry conditions until 6AM Friday. Then a 30-40% chance of scattered showers will move into the area and continue throughout the evening. Around 11 PM, a more pronounced line of storms will enter the region that will continue through the early AM Saturday. Gusty winds will be the main risk with this line as well as a low-end tornado risk.

Wind: Sustained winds out of the SE at 6 - 10 kts N of Morgan's Point and 10 - 15 kts S of Morgan's Point until 9 AM. From 10 AM - 6 PM, winds increase to 14 - 19 kts for all stations. After 1AM, winds shift directions out of the NNE due to the passage of a cold front and decrease N of Morgan's Point to 10 -15 kts for the rest of the evening but remain elevated at all other stations. Gusts of 24 - 29 kts possible across all stations in the afternoon and gusts of 30 - 35 kts associated with the front from 11 PM - 2 AM.

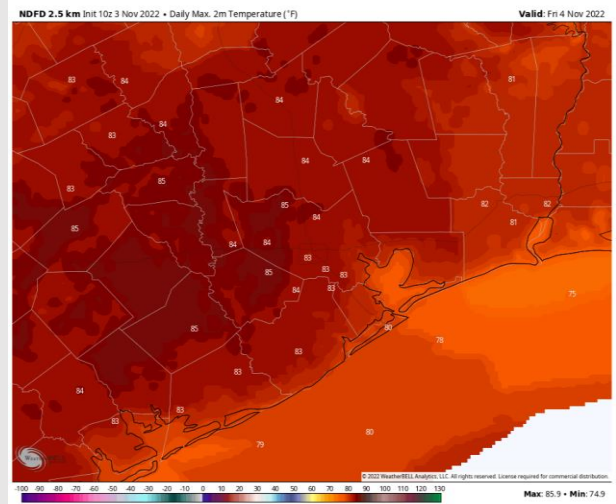
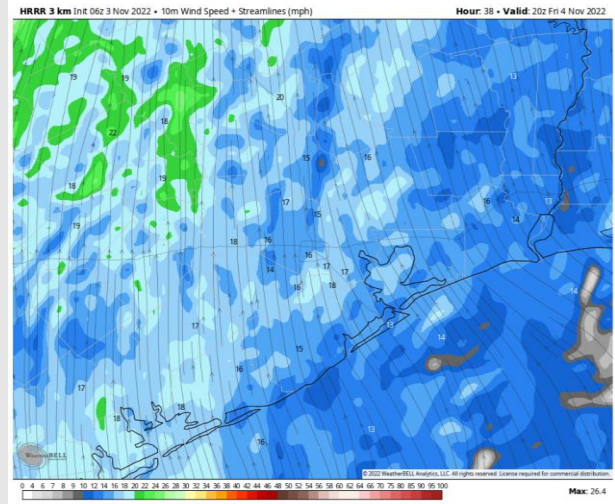
Temps: High temperatures on Friday will be in the mid to upper 70s F near the boarding station and low to mid 80s F at all other stations.

Visibility: Not anticipating any visibility concerns for the overnight.

Precip Forecast: 1 PM CT



Wind Speed
3 PM CT



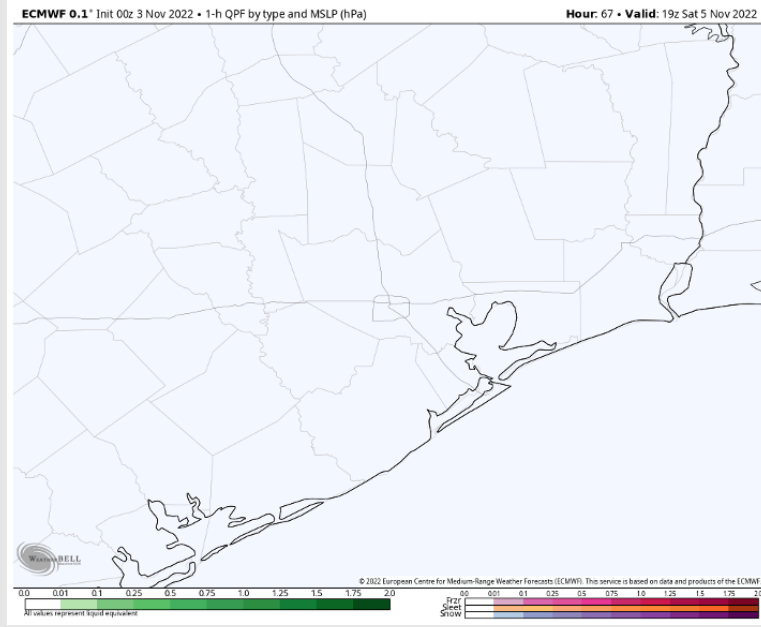
High Temps
Friday

Houston Pilots: sat. 11/5/2022

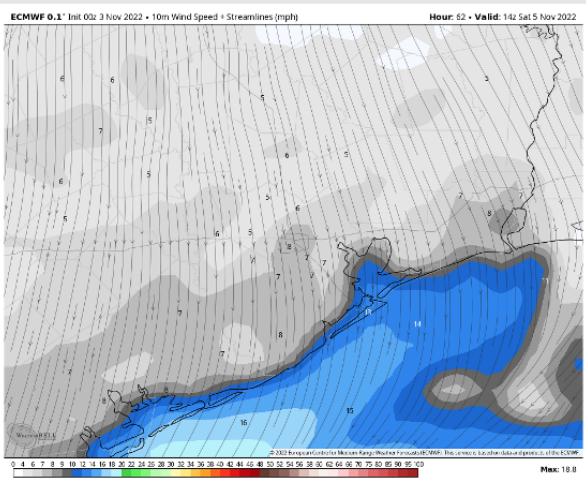
Forecast Discussion

- Precip:** Anticipating line of showers/storms from Friday to continue to move through the area early Saturday AM. Then favoring dry conditions throughout the rest of the day.
- Wind:** Sustained N winds at 5-9 knots for stations N of Morgan's Point and 9-13 knots for stations S of Morgan's Point until 12 PM. For the rest of the night, winds gradually weaken to 4-7 knots and shift over from the SE for all stations.
- Temps:** High temps Saturday near 70 F at the boarding station and in the lower 70s F at all other stations.
- Visibility:** Not anticipating any visibility concerns at this time.

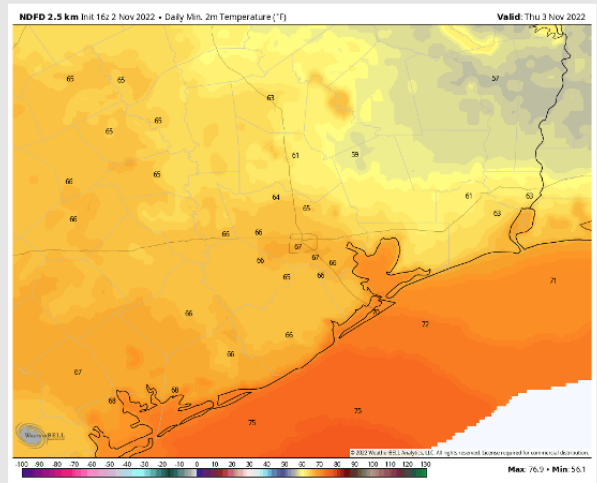
Precip Forecast: 2 PM CT



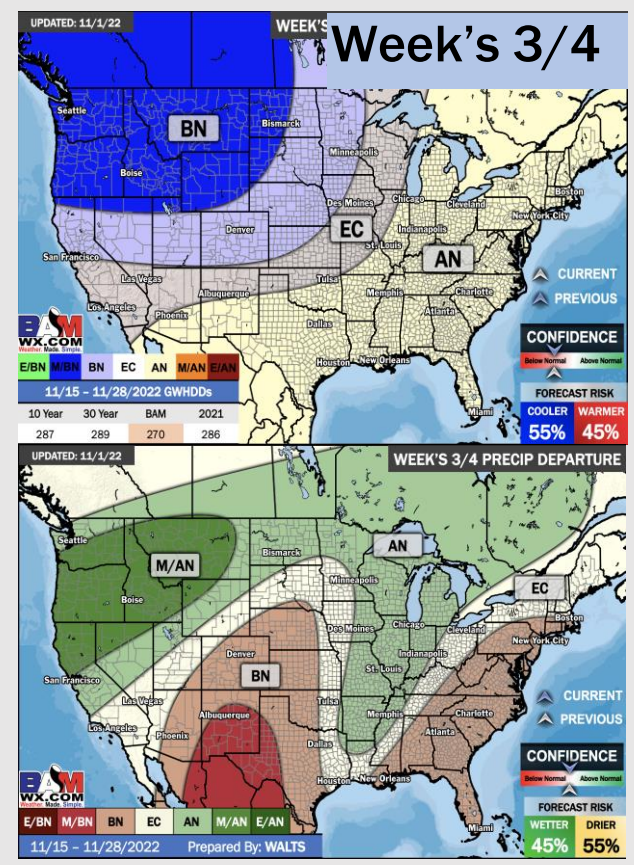
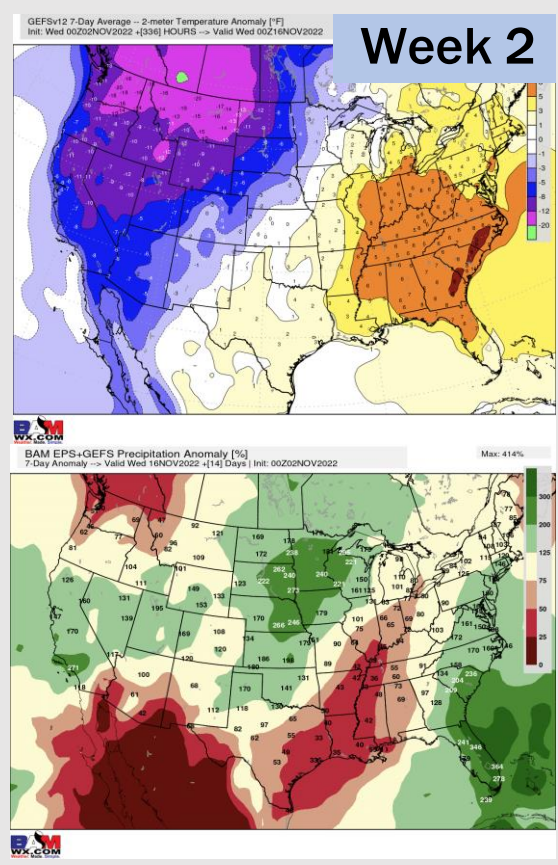
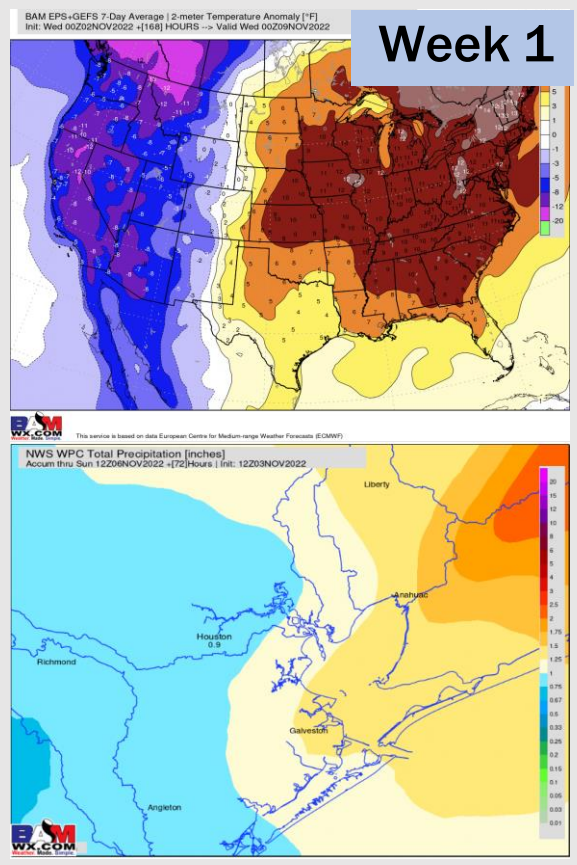
Wind Speed
9 PM CT



High Temps
Saturday



Houston Pilots: 11/2/2022



- Temperatures expected to be slightly above normal next week. More widespread chances of precipitation going into tomorrow.
- Week 2 to feature slightly above normal temperatures and below normal precipitation.
- The weeks ¾ timeframe into November looks to feature above normal temperatures and slightly below normal to normal risks for precipitation.