

# Houston Pilots Forecast Package



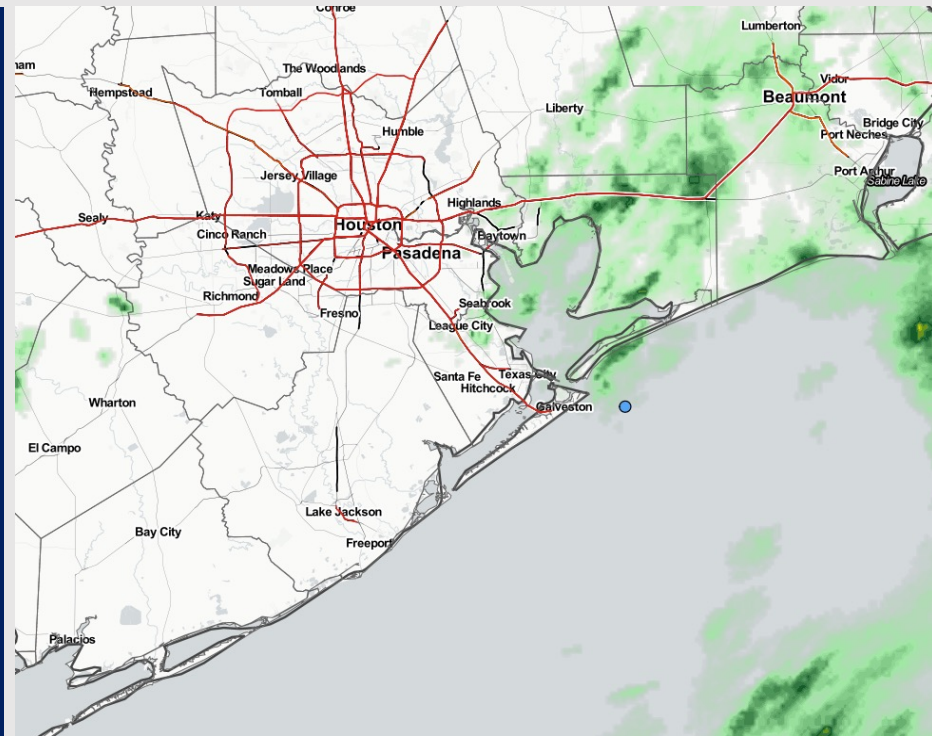
Updated: 1:00 PM CT

Tuesday, November 22, 2022

Forecaster: Vince Bryan

## Weather Headlines

- Showers move out of the area this afternoon and lead to a mainly dry Wednesday. Chances for precip return Thu/Fri before a drier weekend.
- NE winds through Wednesday before we watch for winds to really pick up on Friday/Saturday. **15-25 kt winds possible on the day Friday at the boarding station.**
- Unfavorable wind directions will limit fog threats moving forward.
- Not anticipating any tropical activity concerns over the next 10 days.



**Radar/NWS Alerts: 1:00 PM CT**

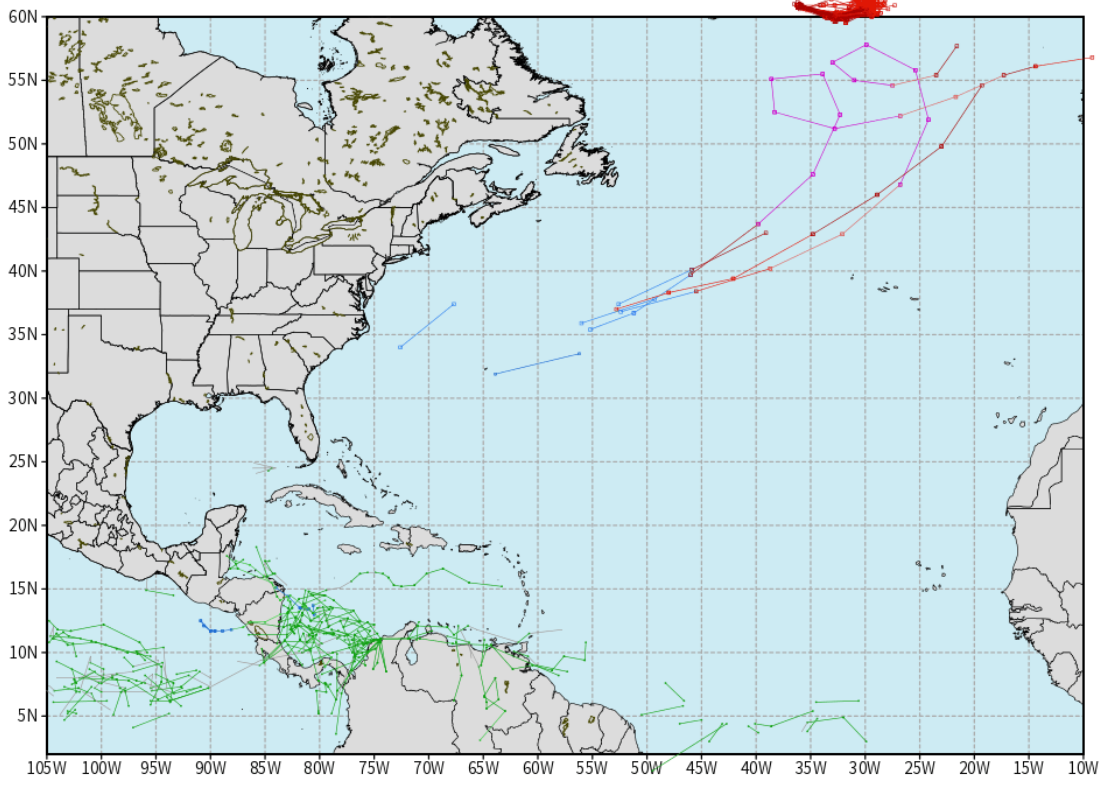


As always, please do not hesitate to reach out to us with any forecast questions via the chat option on the Weather Porthole or our on-call number, **(317)-560-8122** press 1 for forecast questions.

## European Data Tracks Next 10 Days

ECMWF ATLANTIC EPS Cyclone Locations --> Next [10-days]  
INIT: 12Z20NOV2022 --> UNTIL 12Z30NOV2022

o-o ENSEMBLE MEAN  
o-o 1000 - 1010 hPa  
o-o 980 - 999 hPa  
o-o 960 - 979 hPa  
o-o 950 - 959 hPa  
o-o < 950 hPa



[weathermodels.com](http://weathermodels.com)

**Not anticipating any tropical activity for SE TX over the next 10 days.**

### Confidence

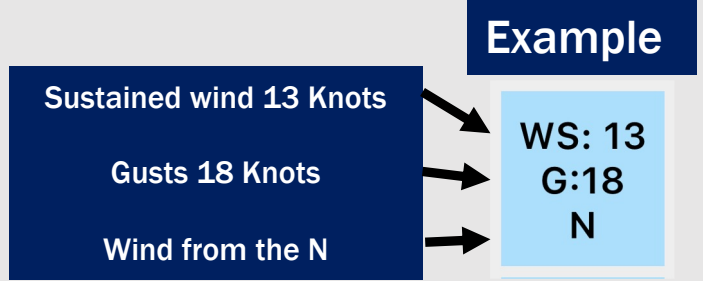
Above Normal      Below Normal

# Houston Pilots Visibility Report



Time	Tue 11am	Tue 12pm	Tue 1pm	Tue 2pm	Tue 3pm	Tue 4pm	Tue 5pm	Tue 6pm	Tue 7pm	Tue 8pm	Tue 9pm	Tue 10pm	Tue 11pm	Wed 12am	Wed 1am	Wed 2am	Wed 3am	Wed 4am	Wed 5am	Wed 6am	Wed 7am	Wed 8am	Wed 9am	Wed 10am	Wed 11am	Wed 12pm	Wed 1pm	Wed 2pm	Wed 3pm	Wed 4pm	Wed 5pm	Wed 6pm	Wed 7pm	Wed 8pm	Wed 9pm	Wed 10pm		
610 Bridge	10	10	10	10	10	10	10	10	10	10	10	10	10	10	10	10	10	10	10	10	10	10	10	10	10	10	10	10	10	10	10	10	10	10	9	7		
Kinder 1	10	10	10	10	10	10	10	10	10	10	10	10	10	10	10	10	10	10	10	10	10	10	10	10	10	10	10	10	10	10	10	10	10	10	10	9	7	
Greens Bayou	10	10	10	10	10	10	10	10	10	10	10	10	10	10	10	10	10	10	10	10	10	10	10	10	10	10	10	10	10	10	10	10	10	10	10	9	8	
Shell Crude	10	10	10	10	10	10	10	10	10	10	10	10	10	10	10	10	10	10	10	10	10	10	10	10	10	10	10	10	10	10	10	10	10	10	10	9	9	
Lynchburg Ferries	10	10	10	10	10	10	10	10	10	10	10	10	10	10	10	10	10	10	10	10	10	10	10	10	10	10	10	10	10	10	10	10	10	10	10	9	9	
Exxon 3	10	10	10	10	10	10	10	10	10	10	10	10	10	10	10	10	10	10	10	10	10	10	10	10	10	10	10	10	10	10	10	10	10	10	10	9	9	
Morgans Point	10	10	10	10	10	10	10	10	10	10	10	10	10	10	10	10	10	10	10	10	10	10	10	10	10	10	10	10	10	10	10	10	10	10	10	9	9	
75/76	10	10	10	10	10	10	10	10	10	10	10	10	10	10	10	10	10	10	10	10	10	10	10	10	10	10	10	10	10	10	10	10	10	10	10	9	9	
63/64	10	10	10	10	10	10	10	10	10	10	10	10	10	10	10	10	10	10	10	10	10	10	10	10	10	10	10	10	10	10	10	10	10	10	10	10	9	9
51/52	10	10	10	10	10	10	10	10	10	10	10	10	10	10	10	10	10	10	10	10	10	10	10	10	10	10	10	10	10	10	10	10	10	10	10	9	9	
37/38	10	10	10	10	10	10	10	10	10	10	10	10	10	10	10	10	10	10	10	10	10	10	10	10	10	10	10	10	10	10	10	10	10	10	10	9	9	
25/26	10	10	10	10	10	10	10	10	10	10	10	10	10	10	10	10	10	10	10	10	10	10	10	10	10	10	10	10	10	10	10	10	10	10	10	9	9	
11/12	10	10	10	10	10	10	10	10	10	10	10	10	10	10	10	10	10	10	10	10	10	10	10	10	10	10	10	10	10	10	10	10	10	10	10	9	9	
1 & 2 Bravo	10	10	10	10	10	10	10	10	10	10	10	10	10	10	10	10	10	10	10	10	10	10	10	10	10	10	10	10	10	10	10	10	10	9	9	9	9	

# Houston Pilots Wind Report



Time Knots	Tue 11am	Tue 12pm	Tue 1pm	Tue 2pm	Tue 3pm	Tue 4pm	Tue 5pm	Tue 6pm	Tue 7pm	Tue 8pm	Tue 9pm	Tue 10pm	Tue 11pm	Wed 12am	Wed 1am	Wed 2am	Wed 3am	Wed 4am	Wed 5am	Wed 6am	Wed 7am	Wed 8am	Wed 9am	Wed 10am	Wed 11am	Wed 12pm	Wed 1pm	Wed 2pm	Wed 3pm	Wed 4pm	Wed 5pm	Wed 6pm	Wed 7pm	Wed 8pm	Wed 9pm	Wed 10pm	
610 Bridge	6	5	5	4	5	5	3	3	3	2	3	2	3	2	3	3	3	3	3	3	3	4	5	5	4	4	5	6	6	6	6	6	5	5	4	5	4
	12	12	11	9	8	9	9	6	6	5	5	5	5	5	5	5	5	5	5	6	5	5	6	7	7	7	7	8	9	9	10	9	8	8	7	8	6
	ENE	NE	NNE	NE	NE	ENE	E	E	ENE	NE	NE	NE	NE	NE	NNE	NE	NE	NE	NE	NE	NE	NE	ENE	ENE	E	E	E	E	ESE	ESE	ESE	ESE	ESE	ESE	E	ESE	ESE
Kinder 1	6	5	5	4	5	5	3	3	3	2	3	2	3	2	3	2	3	3	3	3	3	4	5	5	4	4	5	6	6	6	6	5	5	4	5	4	
	12	12	11	9	8	9	9	5	5	5	5	5	5	5	5	5	5	5	5	6	5	5	6	7	7	7	8	9	9	9	9	8	8	7	7	6	
	ENE	NE	NNE	NE	NE	ENE	E	E	ENE	NE	NE	NNE	NE	NE	NNE	NE	NE	NE	NE	NE	NE	NE	ENE	ENE	E	E	E	ESE	ESE	ESE	ESE	ESE	ESE	ESE	E	ESE	ESE
Greens Bayou	5	6	5	4	5	5	2	3	3	3	3	2	3	3	3	3	3	3	3	3	3	4	5	5	5	4	5	6	5	6	6	6	5	4	4	4	
	11	12	11	9	8	10	9	5	5	5	5	4	5	5	5	5	5	5	5	5	5	6	7	7	7	7	7	8	8	9	8	8	8	7	7	6	
	ENE	NE	NNE	NE	NE	ENE	E	E	ENE	NE	NE	NNE	NE	NE	NNE	NE	NE	NE	NE	NE	NE	NE	ENE	ENE	E	E	E	ESE	ESE	ESE	ESE	ESE	ESE	ESE	E	ESE	ESE
Shell Crude	5	6	5	4	5	4	2	2	3	3	2	2	3	3	3	3	3	3	3	3	4	4	5	5	5	4	5	6	5	6	6	6	5	4	4	4	
	11	12	11	9	9	9	9	5	5	5	5	4	5	5	5	5	6	5	6	6	6	6	7	7	7	7	7	8	8	9	8	9	8	7	7	6	
	NE	NE	NNE	NE	NE	ENE	E	E	NE	ENE	NE	NNE	NE	NE	NNE	NE	NE	NE	NE	NE	NE	NE	ENE	ENE	E	E	E	ESE	ESE	ESE	ESE	ESE	ESE	ESE	ESE	E	ESE
Lynchburg Ferries	4	6	5	4	5	4	3	2	3	3	2	2	3	3	3	3	3	3	3	3	4	4	5	5	5	4	5	5	6	5	6	5	5	5	5	5	
	11	12	12	8	9	9	9	5	4	5	5	5	5	5	5	5	6	5	5	6	6	6	7	7	7	7	7	8	8	8	8	8	9	8	8	7	6
	NE	NE	NNE	NE	NE	ENE	E	E	NE	NE	NE	NNE	NE	NNE	NNE	NE	NE	NE	NE	NE	NE	NE	ENE	ENE	E	E	E	ESE	ESE	ESE	ESE	ESE	ESE	ESE	E	ESE	ESE
Exxon 3	4	5	5	4	5	4	3	2	3	3	3	2	3	3	3	4	4	4	4	4	4	4	5	5	5	5	5	5	6	5	6	5	5	5	5	5	
	11	13	13	9	9	9	9	6	6	6	7	7	7	7	7	6	6	6	6	6	6	7	7	8	7	7	7	7	8	8	8	8	9	9	8	8	7
	NE	NE	NE	NE	NE	ENE	E	ENE	NE	NE	NE	NE	NE	NNE	NNE	NE	NE	NE	NE	NE	NE	NE	NE	ENE	ENE	E	E	E	ESE	ESE	ESE	ESE	ESE	ESE	ESE	ESE	ESE
Morgans Point	6	6	6	4	5	6	5	4	5	5	5	4	4	5	5	5	5	5	5	5	5	6	6	6	6	6	6	6	6	6	6	6	7	6	6	6	
	12	13	13	9	10	10	7	9	9	10	9	9	9	10	9	7	8	7	7	8	8	8	9	8	8	8	7	8	8	8	9	10	10	9	10	9	
	NE	NE	NE	NE	NE	ENE	NE	NE	NE	NE	NE	NE	NE	NE	NE	NE	NE	NE	NE	NE	NE	NE	ENE	ENE	E	E	E	ESE	ESE	ESE	ESE	ESE	ESE	ESE	ESE	ESE	ESE
75/76	10	10	9	7	8	10	9	9	9	9	9	9	9	10	10	7	7	7	7	7	7	8	8	8	7	7	6	6	6	6	7	7	8	8	8	8	
	13	14	14	9	11	12	12	10	11	11	12	11	11	12	12	10	10	9	9	9	9	10	10	10	9	8	8	8	8	9	10	11	11	11	11	11	
	NE	NNE	NE	NE	NE	ENE	NE	NE	NE	NE	NE	NE	NE	ENE	ENE	ENE	NE	NE	NE	NE	ENE	ENE	ENE	ENE	ENE	ENE	E	E	ESE	ESE	ESE	ESE	ESE	ESE	ESE	ESE	
63/64	12	11	11	9	10	12	10	10	11	12	11	11	11	11	11	9	9	8	8	8	9	9	9	8	7	7	6	6	6	7	8	8	9	9	9	9	
	14	14	14	10	11	13	12	12	12	13	13	12	13	14	14	11	11	10	10	10	10	11	11	10	10	9	9	9	9	10	11	12	12	12	12	12	
	NNE	NE	NE	NE	NE	ENE	ENE	NE	NE	NE	NE	ENE	ENE	ENE	ENE	NE	NE	NE	ENE	ENE	ENE	ENE	ENE	ENE	ENE	ENE	E	E	E	ESE	ESE	ESE	ESE	ESE	ESE	ESE	
51/52	13	11	11	9	9	11	10	10	11	12	11	11	11	11	11	9	9	9	9	9	9	9	9	9	8	7	7	8	8	8	9	9	9	9	10	10	
	15	14	14	11	11	12	12	13	14	15	14	13	14	14	14	12	11	11	11	10	10	11	11	10	10	9	10	10	11	11	11	12	13	13	14	13	
	NNE	NE	NE	NE	NE	ENE	NE	NE	NE	NE	NE	ENE	ENE	ENE	ENE	NE	NE	NE	ENE	ENE	ENE	ENE	ENE	ENE	ENE	E	E	E	E	E	ESE	ESE	ESE	ESE	ESE	ESE	
37/38	13	12	11	9	9	10	10	10	11	12	11	11	11	11	11	9	9	9	9	9	9	9	9	9	8	8	8	8	9	9	9	9	10	10	10	10	
	15	14	14	11	11	12	12	12	14	15	14	14	14	14	14	12	11	11	11	10	10	11	11	11	11	11	11	11	11	11	12	13	13	14	15	14	
	NNE	NE	NE	NE	NNE	NE	NE	NE	NE	NE	NE	NE	ENE	ENE	ENE	NE	NE	NE	ENE	ENE	ENE	ENE	ENE	ENE	ENE	E	E	E	E	E	ESE	ESE	ESE	ESE	ESE	ESE	
25/26	12	12	10	9	9	10	10	10	11	11	10	10	10	9	9	9	9	9	9	9	9	9	9	9	9	9	9	9	9	9	9	10	10	10	11	10	
	16	15	13	11	11	11	12	12	13	15	14	14	14	13	13	11	11	11	11	10	10	11	11	11	11	12	12	12	12	13	13	14	15	14	15	14	
	NNE	NE	NE	NE	NNE	NE	NE	NE	NE	NE	NE	ENE	ENE	ENE	NE	NE	NE	ENE	ENE	ENE	ENE	ENE	ENE	ENE	ENE	E	E	E	E	E	ESE	ESE	ESE	ESE	ESE	ESE	
11/12	12	12	10	9	9	10	10	10	10	10	10	10	10	10	9	9	9	9	9	9	9	9	10	10	10	10	10	10	10	10	10	10	10	10	10	10	
	16	14	14	11	11	11	12	13	15	14	14	14	13	13	12	11	11	11	11	11	11	11	11	11	12	12	12	12	12	12	13	14	14	15	14	14	
	NNE	NE	NE	NE	NNE	NE	NE	NE	NE	NE	NE	NE	ENE	ENE	NE	NE	NE	NE	NE	NE	NE	NE	NE	NE	NE	E	E	E	E	E	ESE	ESE	ESE	ESE	ESE	ESE	
1 & 2 Bravo	15	14	13	11	11	11	12	13	12	14	12	12	13	13	13	11	11	11	10	10	10	11	11	11	11	11	11	11	11	11	11	12	13	13	13	13	
	17	15	14	12	12	12	13	13	12	14	13	13	14	13	13	13	13	13	12	12	12	12	12	12	13	13	13	13	13	13	14	14	15	16	15	15	
	NNE	NNE	NE	NE	NE	NE	NE	NE	NE	NE	NE	ENE	ENE	ENE	ENE	ENE	ENE	ENE	ENE	ENE	ENE	ENE	ENE	ENE	E	E	E	E	E	E	ESE	ESE	ESE	ESE	ESE	ESE	

See slides below for official thoughts on winds.

## Forecast Discussion

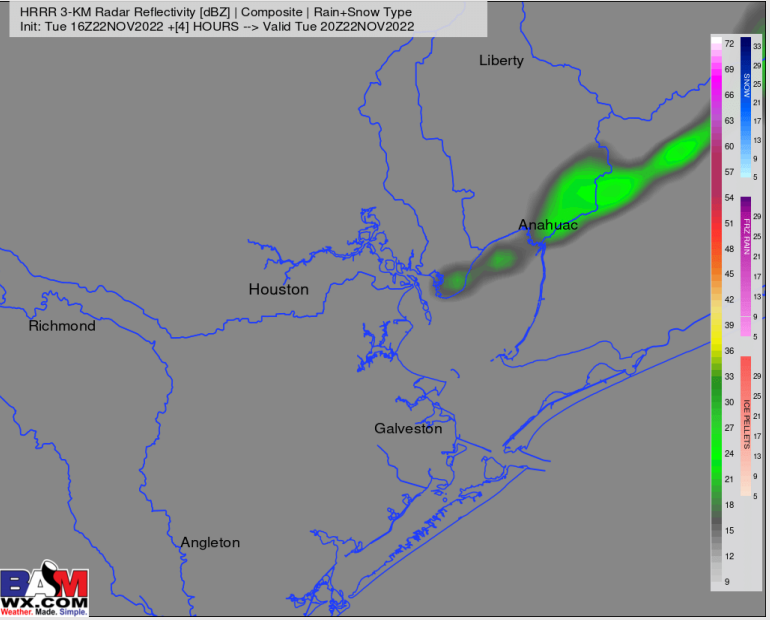
**Precip:** Showers will continue to move off to the Northeast as the early afternoon hours progress. Through 3 PM runs a 20% risk of an isolated leftover shower, but the rest of the day should be quiet.

**Wind:** Sustained winds continue out of the NE. Winds N of Morgan's Point will be 3 - 8 kts and winds S of Morgan's Point will be 8-13 kts. Wind gusts up to 15 knots will be possible at the boarding station.

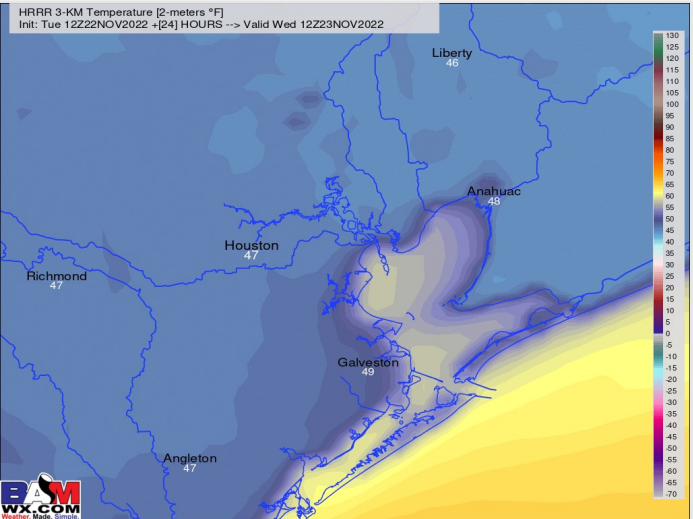
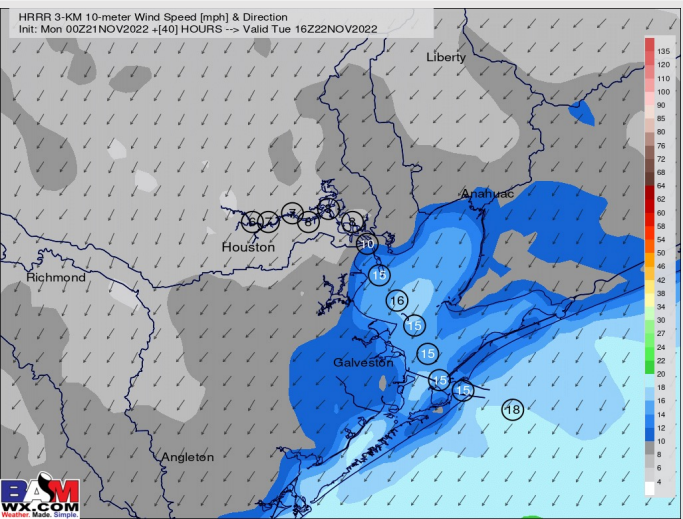
**Temps:** Lows Wednesday AM will be in the mid to upper 50s.

**Visibility:** Not anticipating any visibility concerns at this time.

## Precip Forecast: 2 PM CT



Wind Speed  
10 AM CT



Low Temps  
Wed AM

## Forecast Discussion

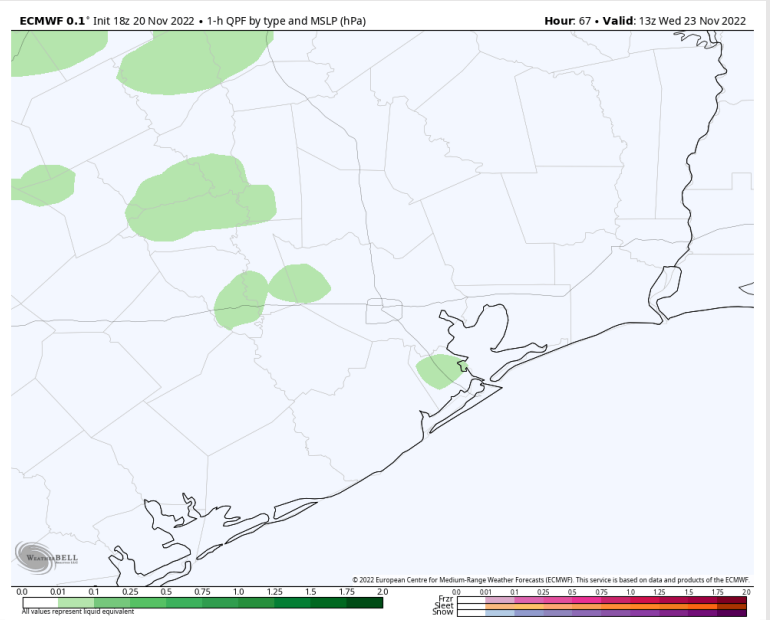
**Precip:** 10-20% chance of isolated showers/storms until 10 AM. Anticipating dry conditions for the rest of the day. Rain chances increase shortly after Midnight into early Thu AM.

**Wind:** Sustained winds out of the NE at 4-8 kts for stations N of Morgan's Point and 10-15 kts for stations S of Morgan's Point until 12 PM. After 12 PM, winds gradually weaken to 5-10 kts for all stations and shift out of the E for the rest of the day. Eyeing late Wednesday night to see an increase in winds.

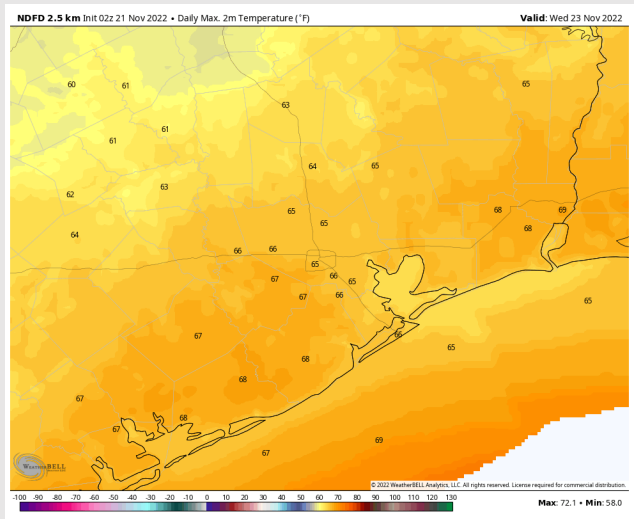
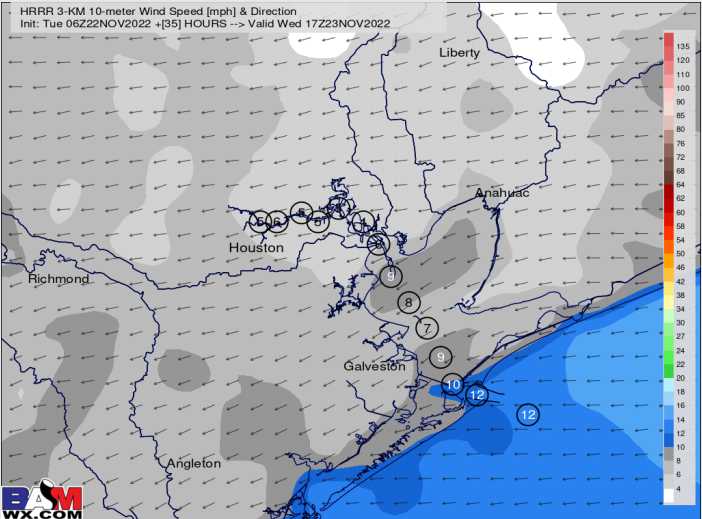
**Temps:** High temperatures will be in the mid 60s for all stations.

**Visibility:** Not anticipating any visibility concerns at this time.

## Precip Forecast: 7 AM CT



Wind Speed  
10 AM CT



High Temps  
Wednesday

# Houston Pilots: Thur. 11/24/2022



## Forecast Discussion

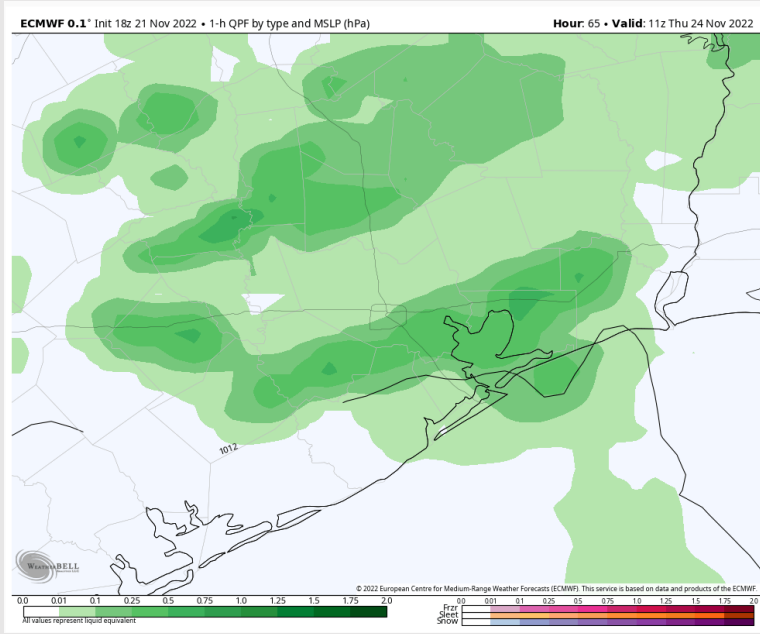
**Precip:** Anticipating a rainy day. Scattered showers and thunderstorms will enter the region around 2 AM and become fairly widespread until 9 AM (~80%). From 10 AM – 7 PM, rain chances will be less likely (40 %). Then From 7 PM through midnight, shower chances will increase again, mainly north and west of the bay area. A few locally stronger thunderstorms cannot be ruled out on the day Thursday

**Wind:** Favoring winds out of the E for the morning and early afternoon. Winds N of Morgan’s Point will be at 3 – 8 kts and S of Morgan’s Point will be 9 – 14 kts. After 12 PM winds across all stations will subside to 2 – 7 kts with variable directions.

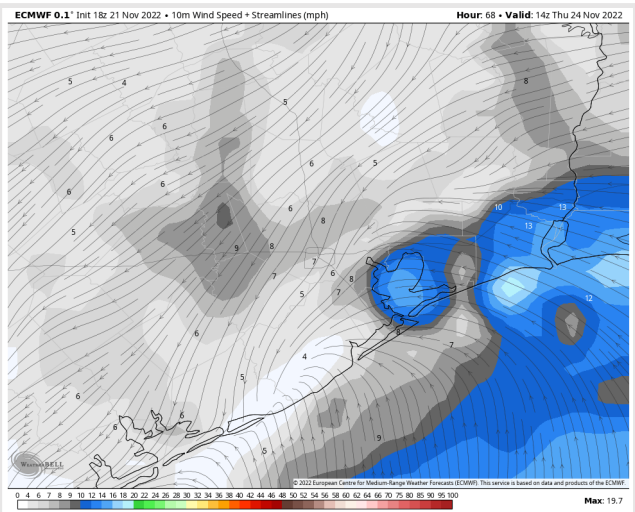
**Temps:** Warming trend continues. High temps will be in the upper 60s F to lower 70s F across all stations.

**Visibility:** Visibilities could briefly reduce to less than 3 miles under moderate rain bands.

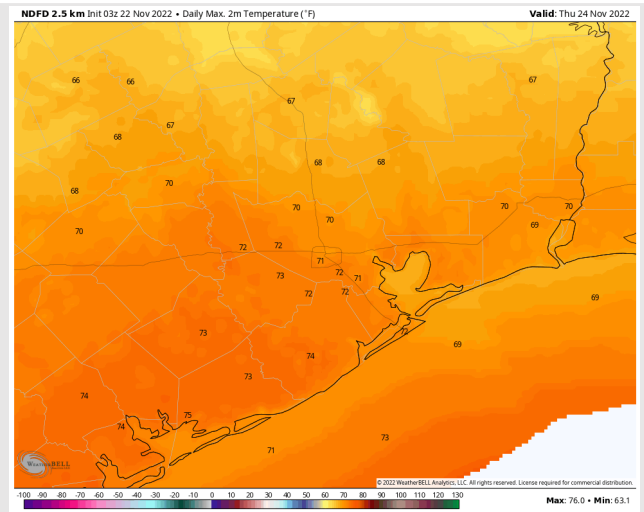
## Precip Forecast: 5 AM CT



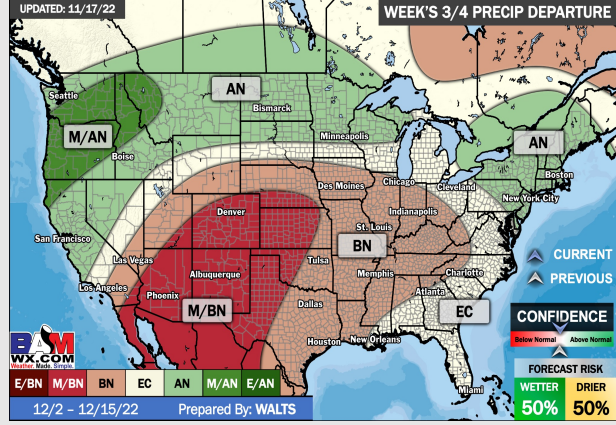
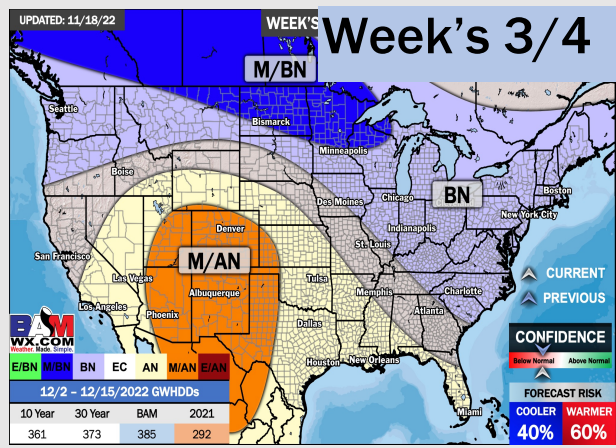
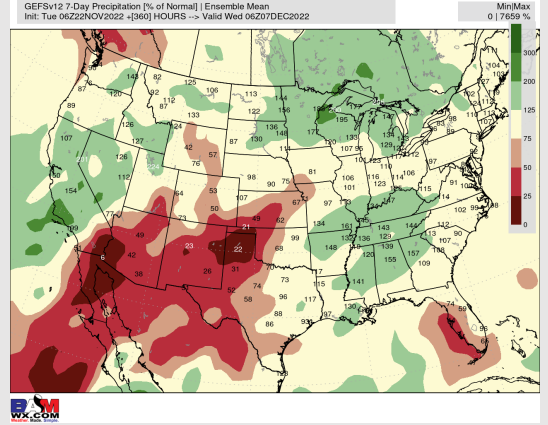
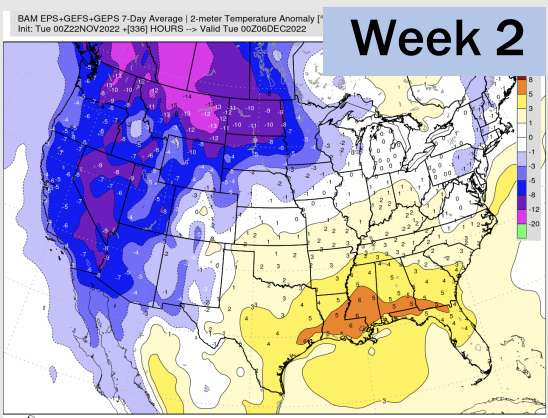
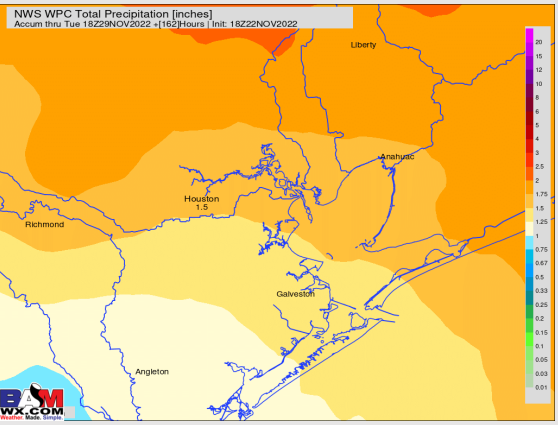
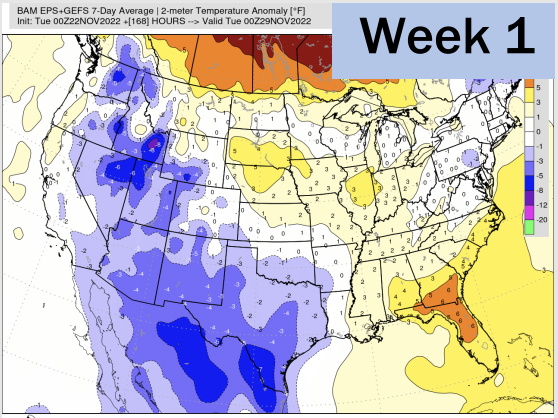
Wind Speed  
8 AM CT



High Temps  
Thursday



# Houston Pilots: 11/22/22



- Temperatures expected to be much below normal this week. A quieter mid-week is followed by rain chances Thursday/ Friday.
- Week 2 is expected to warm things up and dry things out working into early December.
- The weeks 3/4 timeframe looks to feature above normal temperatures and below normal risks for precipitation.