

# Houston Pilots Forecast Package



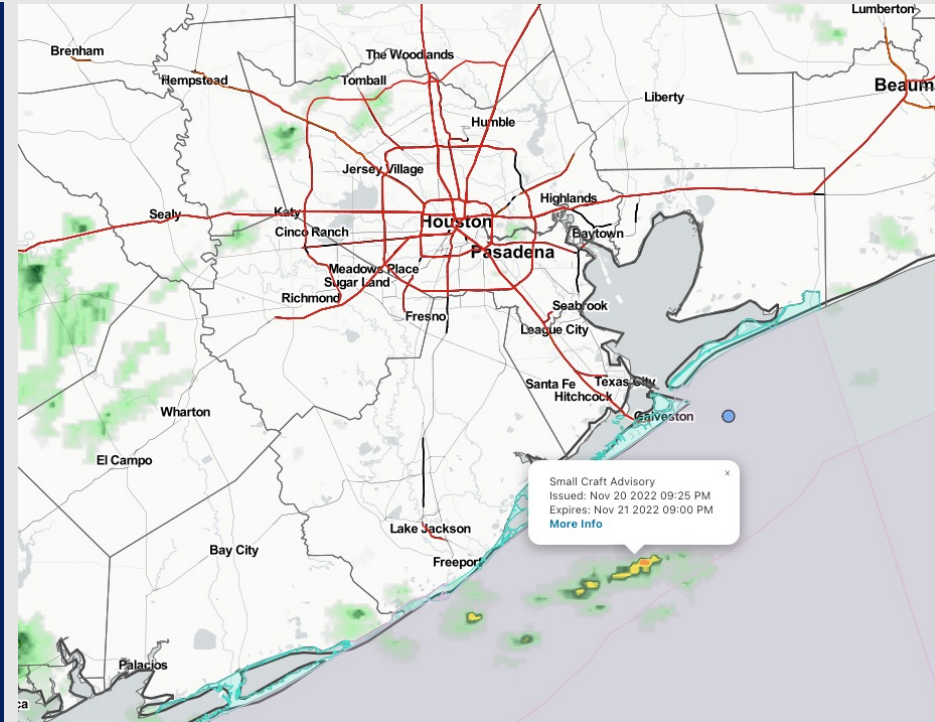
Updated: 5:00 AM CT

Monday, November 21, 2022

Forecaster: Vince Bryan

## Weather Headlines

- Expecting precip today with a generally drier Tue/Wed. Thanksgiving looks to bring a good shot of rainfall.
- NE winds through Wednesday before we watch for winds to really pick up on Friday. **15-25 kt winds possible on the day Friday at the boarding station.**
- Elevated winds + unfavorable wind direction will limit fog threat moving forward.
- Not anticipating any tropical activity concerns over the next 10 days.



**Radar/NWS Alerts: 5:00 AM CT**

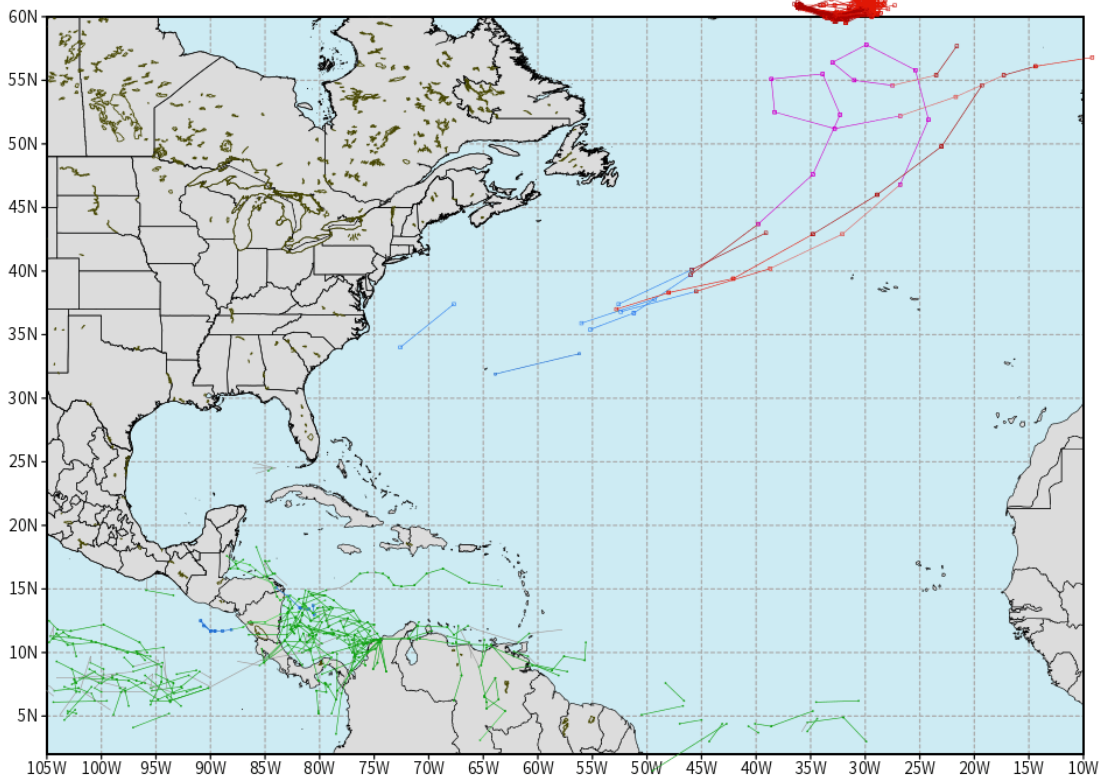


As always, please do not hesitate to reach out to us with any forecast questions via the chat option on the Weather Porthole or our on-call number, **(317)-560-8122** press 1 for forecast questions.

## European Data Tracks Next 10 Days

ECMWF ATLANTIC EPS Cyclone Locations --> Next [10-days]  
INIT: 12Z20NOV2022 --> UNTIL 12Z30NOV2022

- o-o ENSEMBLE MEAN
- o-o 1000 - 1010 hPa
- o-o 980 - 999 hPa
- o-o 960 - 979 hPa
- o-o 950 - 959 hPa
- o-o < 950 hPa



[weathermodels.com](http://weathermodels.com)

**Not anticipating any tropical activity for SE TX over the next 10 days.**

### Confidence

Above Normal      Below Normal



# Houston Pilots Wind Report



**Example**

Sustained wind 13 Knots

Gusts 18 Knots

Wind from the N

WS: 13  
G:18  
N

Time Knots	Mon 3am	Mon 4am	Mon 5am	Mon 6am	Mon 7am	Mon 8am	Mon 9am	Mon 10am	Mon 11am	Mon 12pm	Mon 1pm	Mon 2pm	Mon 3pm	Mon 4pm	Mon 5pm	Mon 6pm	Mon 7pm	Mon 8pm	Mon 9pm	Mon 10pm	Mon 11pm	Tue 12am	Tue 1am	Tue 2am	Tue 3am	Tue 4am	Tue 5am	Tue 6am	Tue 7am	Tue 8am	Tue 9am	Tue 10am	Tue 11am	Tue 12pm	Tue 1pm	Tue 2pm		
610 Bridge	5	5	5	5	5	2	6	6	5	4	4	6	5	4	3	6	6	5	4	4	3	4	4	4	4	4	4	5	5	6	6	5	5	5	5	5		
	13	13	13	13	11	5	12	10	8	7	7	6	10	11	10	9	9	8	8	7	6	6	7	7	8	7	8	8	8	8	9	10	9	8	7	8	8	
	NE	NE	NE	NNE	NNE	W	NNE	NE	NE	NNE	NNE	NNE	NNE	NNE	NNE	NNE	NNE	NNE	NNE	NNE	NNE	NNE	NNE	NNE	NNE	NNE	NNE	NNE	NNE	NNE	NNE	NNE	NNE	NNE	NNE	NNE	NNE	
Kinder 1	5	5	5	5	5	2	6	6	5	4	4	6	5	4	3	6	6	5	4	4	3	4	4	4	4	4	5	5	5	6	6	5	5	5	5	5		
	13	13	13	13	11	5	12	10	8	7	7	10	10	10	10	9	9	8	7	7	6	6	7	7	8	7	8	8	8	9	10	9	8	7	7	8	8	
	NE	NE	NE	NNE	NNE	NW	NNE	NE	NE	NNE	NNE	NNE	NNE	NNE	NNE	NNE	NNE	NNE	NNE	NNE	NNE	NNE	NNE	NNE	NNE	NNE	NNE	NNE	NNE	NNE	NNE	NNE	NNE	NNE	NNE	NNE	NNE	
Greens Bayou	4	5	5	4	4	2	7	6	5	4	5	6	5	3	2	6	6	5	4	4	3	4	4	4	4	4	4	5	6	6	6	5	5	5	5	5		
	12	13	12	13	11	5	14	10	8	8	7	10	10	10	10	9	9	8	7	7	6	6	7	7	8	8	8	8	8	9	10	9	8	7	7	7	7	
	NNE	NE	NE	NNE	NNE	NW	NNE	NE	NE	NNE	NNE	NNE	NNE	NNE	NNE	NNE	NNE	NNE	NNE	NNE	NNE	NNE	NNE	NNE	NNE	NNE	NNE	NNE	NNE	NNE	NNE	NNE	NNE	NNE	NNE	NNE	NNE	
Shell Crude	4	5	4	4	4	3	7	6	5	4	5	7	5	3	2	6	6	5	4	4	4	4	4	4	5	4	5	5	6	6	6	5	5	5	5	5		
	12	14	12	14	12	6	14	10	8	8	8	11	10	10	10	10	9	8	7	7	6	7	7	7	7	8	8	9	9	10	10	9	8	7	7	7	7	
	NNE	NE	NE	NNE	NNE	NW	NNE	NE	NNE	NE	NNE	NNE	NNE	NE	NNE	NNE	NNE	NNE	NNE	NNE	NNE	NNE	NNE	NNE	NNE	NNE	NNE	NNE	NNE	NNE	NNE	NNE	NNE	NNE	NNE	NNE	NNE	
Lynchburg Ferries	4	4	4	4	4	3	9	5	5	4	5	6	5	3	2	6	6	5	5	5	4	4	4	5	5	5	5	5	6	6	6	6	6	6	5	5	6	
	11	14	13	14	12	7	15	10	7	8	8	10	10	9	10	9	9	8	7	7	6	7	7	7	8	8	8	8	9	9	10	9	8	7	7	7	7	
	NNE	NE	NE	NE	NNE	NW	NNE	NE	NNE	NE	NNE	NNE	NNE	NE	NNE	NNE	NNE	NNE	NNE	NNE	NNE	NNE	NNE	NNE	NNE	NNE	NNE	NNE	NNE	NNE	NNE	NNE	NNE	NNE	NNE	NNE	NNE	
Exxon 3	4	5	4	4	4	3	9	6	5	5	6	4	3	2	6	6	5	5	5	4	4	4	5	5	5	5	5	5	6	6	6	6	6	6	5	6	6	
	12	14	14	14	12	7	15	11	7	8	9	10	10	9	10	10	9	8	7	7	7	7	8	8	9	9	9	9	9	10	11	9	8	8	7	7	7	
	N	NE	NE	NE	NNE	NW	NNE	NNE	NE	NNE	NE	NNE	NNE	E	NNE	NNE	NNE	NNE	NNE	NNE	NNE	NNE	NNE	NNE	NNE	NNE	NNE	NNE	NNE	NNE	NNE	NNE	NNE	NNE	NNE	NNE		
Morgans Point	6	7	7	6	6	5	10	8	7	6	7	7	5	5	4	7	7	6	6	6	6	6	6	6	6	6	6	7	7	7	7	7	7	7	6	6	6	
	12	14	15	14	12	8	15	11	9	9	9	11	10	10	11	10	10	9	9	8	8	8	9	9	10	10	10	10	11	11	11	10	9	8	8	8	7	
	NNE	NE	NE	NE	NNE	NW	NNE	NNE	NNE	NNE	NNE	NNE	NNE	ENE	NE	NNE	NNE	NNE	NNE	NNE	NNE	NNE	NNE	NNE	NNE	NNE	NNE	NNE	NNE	NNE	NNE	NNE	NNE	NNE	NNE	NNE	NNE	
75/76	10	11	13	12	11	7	14	11	10	10	10	11	9	9	8	9	9	9	8	8	8	8	8	8	9	8	9	9	9	9	9	9	9	9	8	7	6	8
	12	14	16	14	13	8	16	12	11	11	11	11	11	11	10	11	11	11	10	10	10	10	10	11	12	12	12	12	12	13	13	12	10	10	9	8	7	8
	NNE	NE	NE	ENE	NE	SSW	NE	NNE	NNE	NNE	NNE	NNE	NNE	NNE	NNE	NNE	NNE	NNE	NNE	NNE	NNE	NNE	NNE	NNE	NNE	NNE	NNE	NNE	NNE	NNE	NNE	NNE	NNE	NNE	NNE	NNE	NNE	NNE
63/64	12	14	15	14	13	8	15	13	12	12	12	12	13	11	11	10	10	10	10	10	10	9	9	9	10	10	10	10	10	11	11	10	9	8	8	7	7	
	13	15	17	15	14	8	16	14	12	13	12	13	12	12	10	12	12	12	12	12	11	11	11	11	12	13	13	13	13	13	14	14	13	12	11	10	9	9
	NE	NE	ENE	ENE	ENE	NE	NE	NE	NNE	NNE	NE	NNE	NNE	NNE	NNE	NE	NNE	NNE	NNE	NNE	NNE	NNE	NNE	NNE	NNE	NNE	NNE	NNE	NNE	NNE	NNE	NNE	NNE	NNE	NNE	NNE	NNE	NNE
51/52	13	14	15	14	13	9	15	14	12	13	13	13	12	12	10	11	11	11	11	10	10	10	10	11	11	11	11	11	11	11	11	11	10	9	8	8	8	
	14	15	18	16	14	9	16	15	13	14	13	14	12	13	10	13	13	13	13	12	12	12	12	13	13	13	13	13	14	14	14	14	13	12	11	11	9	
	NE	NE	ENE	ENE	ENE	NNE	NE	NE	NNE	NNE	NE	NNE	NNE	NNE	NNE	NNE	NNE	NNE	NNE	NNE	NNE	NNE	NNE	NNE	NNE	NNE	NNE	NNE	NNE	NNE	NNE	NNE	NNE	NNE	NNE	NNE	NNE	NNE
37/38	14	13	15	14	13	9	16	15	13	14	13	13	12	13	10	12	11	11	11	11	11	11	11	11	11	11	11	11	11	11	11	11	10	9	9	8	8	
	15	15	17	15	15	10	17	16	13	15	14	14	12	14	11	14	14	13	13	13	12	12	13	13	14	14	14	14	14	15	15	13	12	11	11	10	9	
	NE	NE	ENE	ENE	ENE	NNE	NE	NNE	NNE	NE	NNE	NNE	NE	NNE	NNE	NNE	NNE	NNE	NNE	NNE	NNE	NNE	NNE	NNE	NNE	NNE	NNE	NNE	NNE	NNE	NNE	NNE	NNE	NNE	NNE	NNE	NNE	NNE
25/26	13	12	13	12	12	9	15	14	13	13	12	13	11	12	9	12	12	11	11	11	11	11	11	11	11	11	11	11	11	11	11	11	10	9	9	8	8	
	15	15	16	15	15	11	17	17	14	15	14	14	13	14	11	14	14	14	13	13	12	12	12	13	14	14	14	14	15	15	15	14	13	12	11	10	9	
	NNE	NE	NE	ENE	ENE	NNE	NNE	NE	NNE	NNE	NNE	NE	NNE	NNE	NE	NNE	NNE	NNE	NNE	NNE	NNE	NNE	NNE	NNE	NNE	NNE	NNE	NNE	NNE	NNE	NNE	NNE	NNE	NNE	NNE	NNE	NNE	NNE
11/12	12	12	13	12	12	10	15	15	13	13	12	12	11	12	8	12	12	12	12	12	11	11	11	11	11	12	12	12	12	12	12	12	12	11	10	9	9	
	15	15	16	14	15	11	17	18	15	15	14	14	13	14	11	14	14	14	14	13	13	12	13	13	14	14	14	15	15	15	14	13	12	11	10	9	9	
	NNE	NE	NE	NE	NE	NE	NNE	NNE	NNE	NNE	NNE	NE	NNE	NNE	NNE	NNE	NNE	NNE	NNE	NNE	NNE	NNE	NNE	NNE	NNE	NNE	NNE	NNE	NNE	NNE	NNE	NNE	NNE	NNE	NNE	NNE	NNE	NNE
1 & 2 Bravo	14	15	16	15	15	12	19	18	17	15	15	14	14	16	11	14	14	14	14	13	13	13	13	13	13	13	13	13	13	13	13	12	11	11	10	9	9	
	15	15	17	16	15	12	19	19	17	15	15	15	14	16	11	15	15	15	14	14	14	14	14	14	15	15	14	15	15	15	14	13	12	11	11	10	9	
	NNE	NE	NE	ENE	ENE	ENE	NNE	NE	NNE	NNE	NNE	NNE	NE	NNE	NE	NNE	NNE	NNE	NNE	NNE	NNE	NNE	NNE	NNE	NNE	NNE	NNE	NNE	NNE	NNE	NNE	NNE	NNE	NNE	NNE	NNE	NNE	NNE

See slides below for official thoughts on winds.



# Houston Pilots: Mon. 11/21/2022



## Forecast Discussion

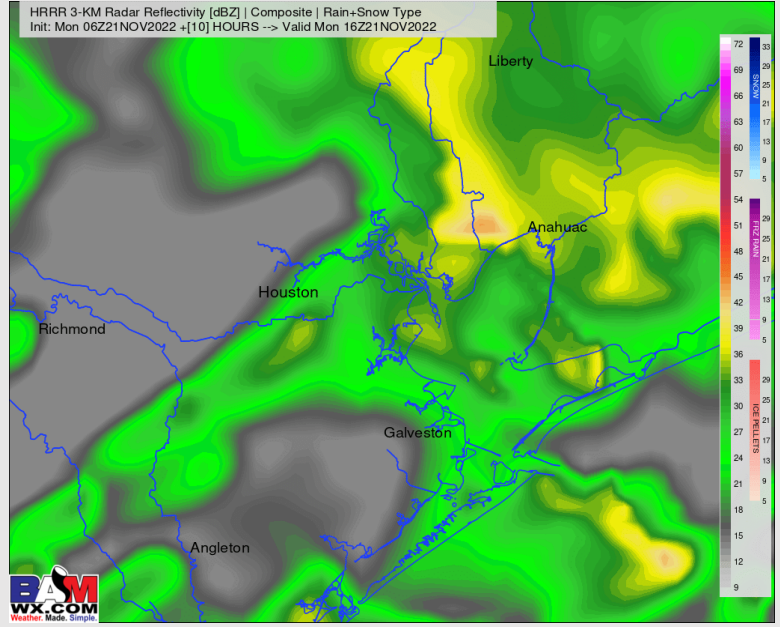
**Precip:** A few hit and miss showers this AM will turn more widespread by 6-7 AM and lasting until 2 PM. From 2 PM to throughout the rest of the day, shower/storm chances become more isolated with 30% chances. Severe weather is not expected.

**Wind:** Sustained winds from the NE for the entire day. Winds N of Morgan's Point will be 5 - 10 kts. Winds S of Morgan's Point to expected to see winds of 13-18 kts through 2 PM. After 2 PM, winds S of Morgan's Point expected to calm a bit to 10-15 kts. Wind gusts up to 20 kts will be possible all day S of Morgan's Point.

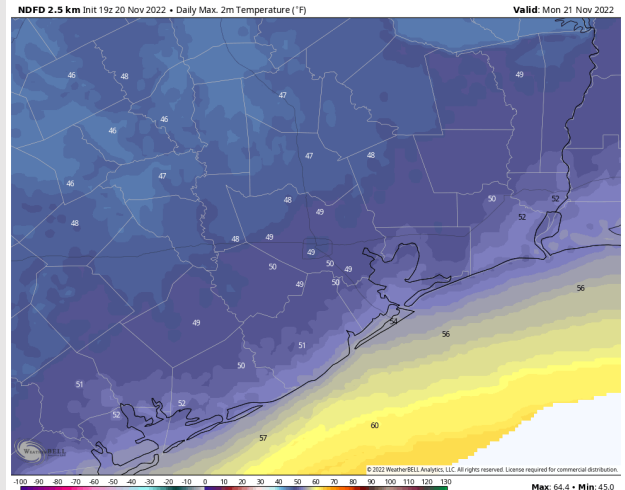
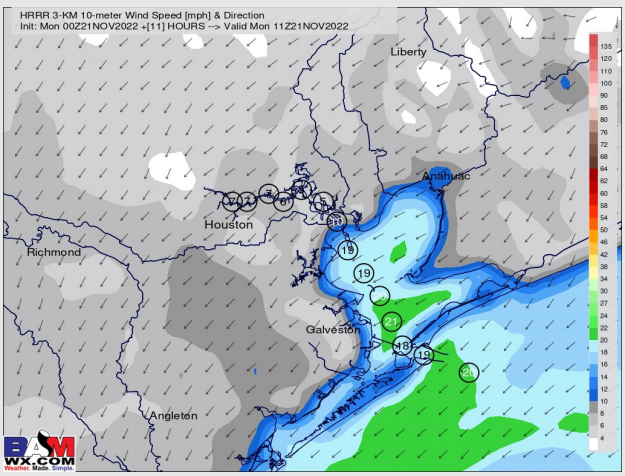
**Temps:** High temps will be in the mid 50s F near the boarding station and in the near 50 F for all other stations.

**Visibility:** Visibilities could briefly reduce to less than 5 miles under some of the moderate rain showers, mainly from 10 AM - 1 PM.

## Precip Forecast: 9 AM CT



Wind Speed  
9 AM CT



High Temps  
Today

# Houston Pilots: Tue. 11/22/2022



## Forecast Discussion

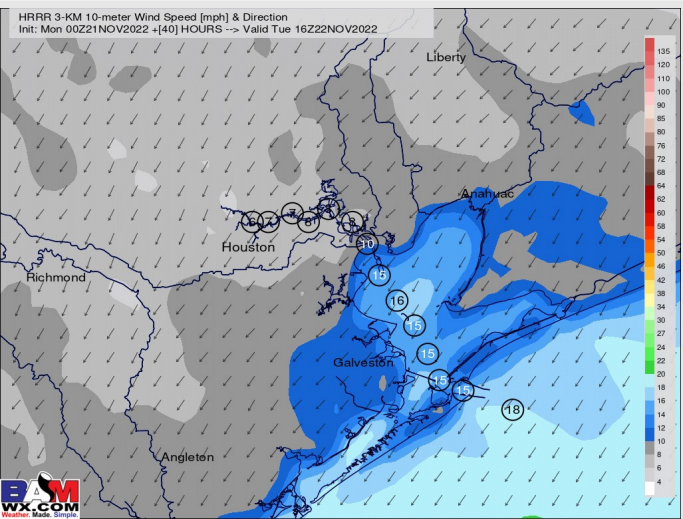
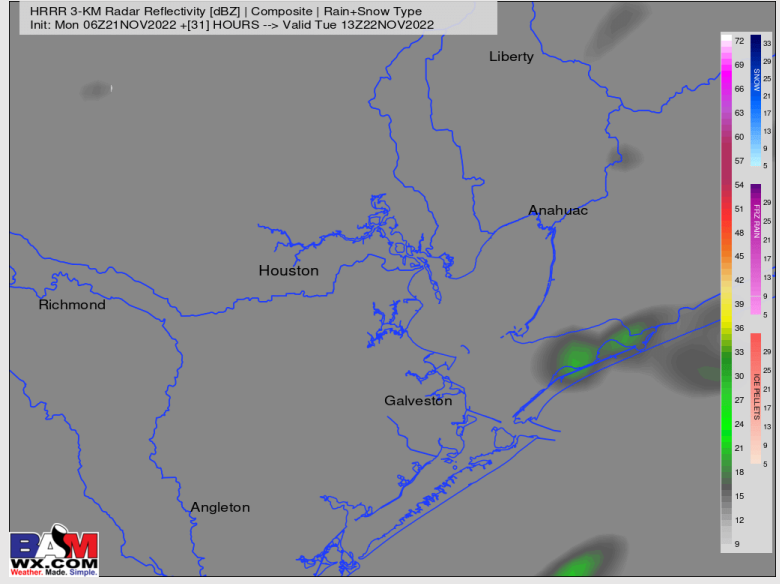
**Precip:** A few stray, leftover pockets of light precip from Monday will be possible out through ~9-10 AM Tue, (20-30%) however the back half of the day right now likely stays dry. Any showers look to stay mainly west of the area.

**Wind:** Sustained winds out of the NE for the entire day. Winds N of Morgan's Point will be 3 – 8 kts and winds S of Morgan's Point will be 11 – 16 kts. Boarding Station will be slightly elevated at 12 – 17 kts. After 11 AM, winds expected to calm to 2-4 kts for stations N of Morgan's Point and 4-9 kts for stations S of Morgan's Point for the rest of the day. Wind gusts of 15 - 20 kts possible around the boarding station in the AM.

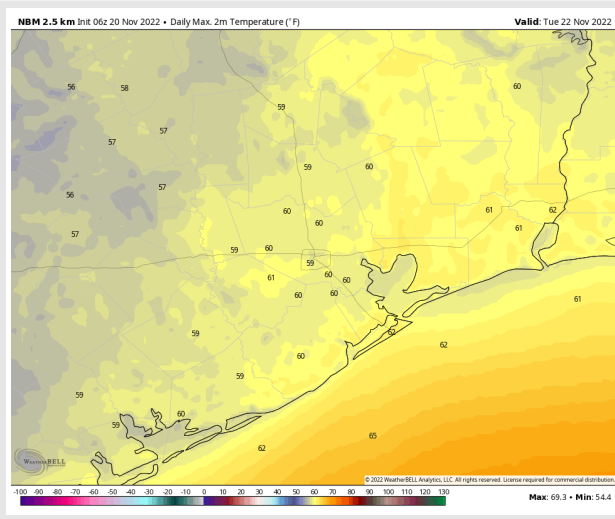
**Temps:** High temperatures will be low 60s F across all stations.

**Visibility:** Not anticipating any visibility concerns at this time.

## Precip Forecast: 8 AM CT



Wind Speed  
10 AM CT



High Temps  
Tuesday

## Forecast Discussion

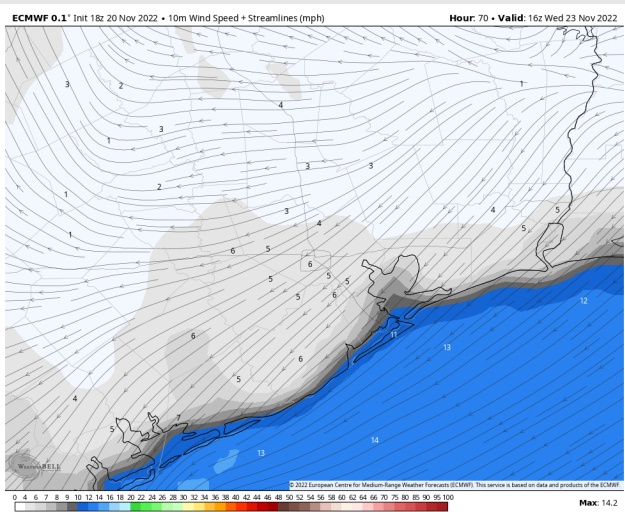
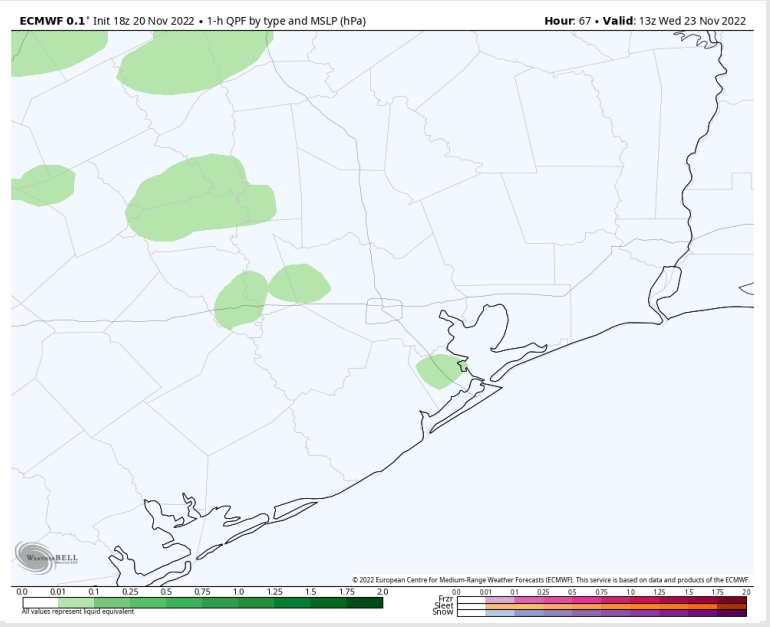
**Precip:** 10-20% chance of isolated showers/storms until 10 AM. Anticipating dry conditions for the rest of the day.

**Wind:** Sustained winds out of the NE at 4-8 kts for stations N of Morgan's Point and 7-12 kts for stations S of Morgan's Point until 12 PM. After 12 PM, winds gradually weaken to 4-9 kts for all stations and shift out of the E for the rest of the day.

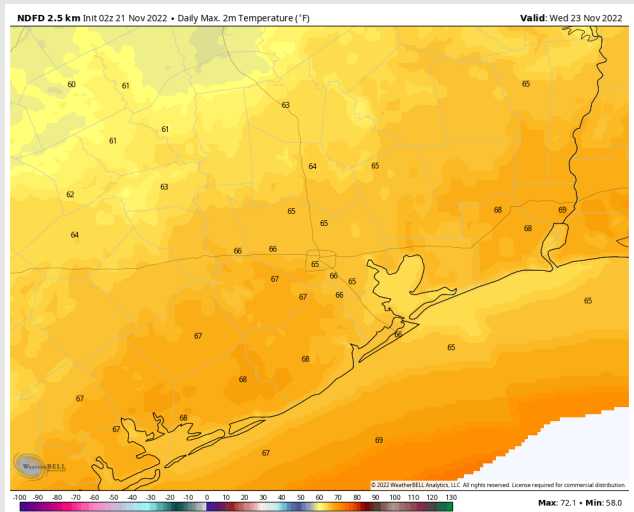
**Temps:** High temperatures will be in the mid 60s for all stations.

**Visibility:** Not anticipating any visibility concerns at this time.

## Precip Forecast: 7 AM CT



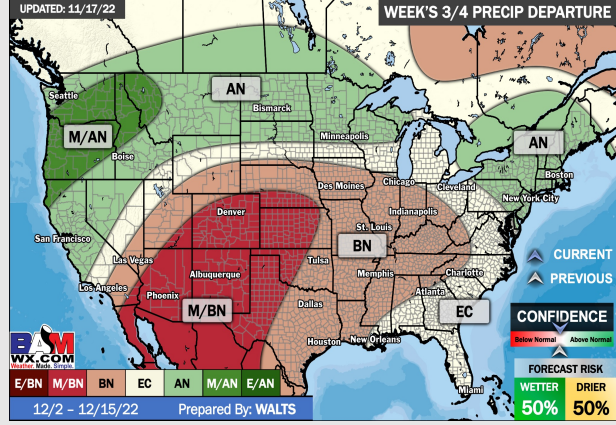
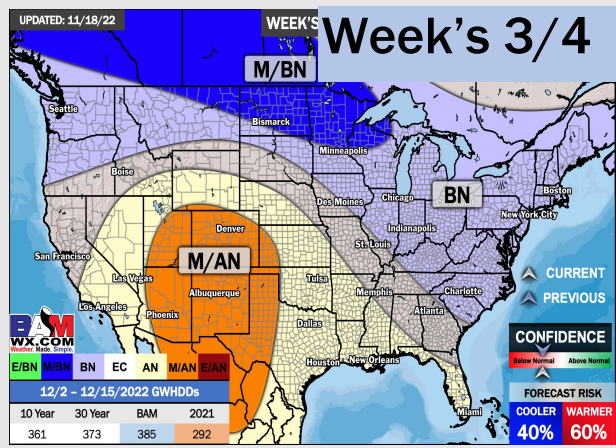
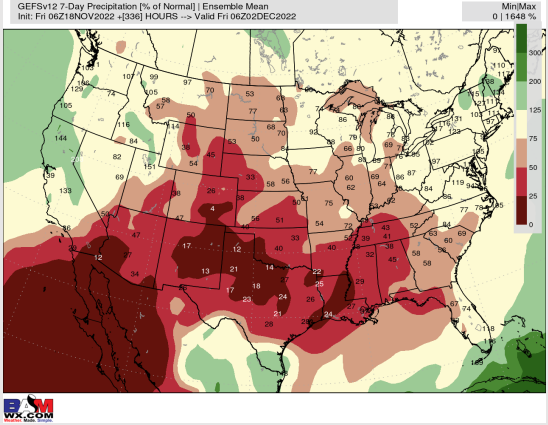
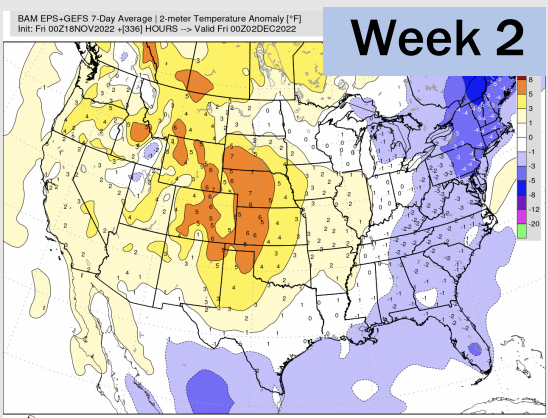
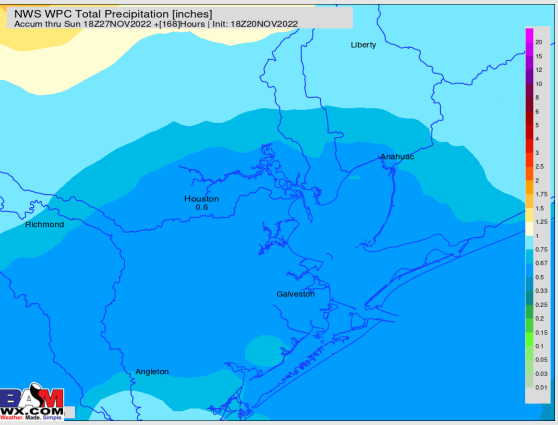
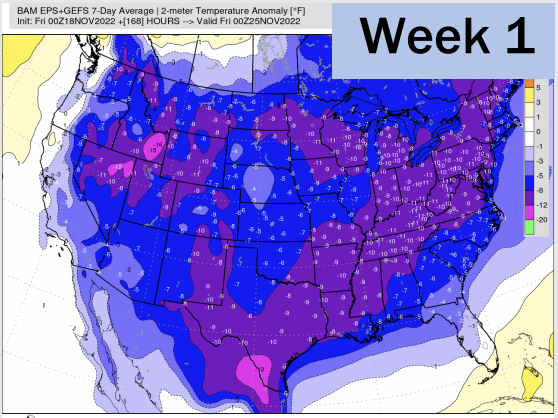
Wind Speed  
10 AM CT



High Temps  
Wednesday



# Houston Pilots: 11/21/22



- Temperatures expected to be much below normal this week as much of the country is below average. Scattered showers/storms are expected the next few days.
- Week 2 to feature below normal temperatures and below normal precipitation.
- The weeks 3/4 timeframe looks to feature above normal temperatures and below normal risks for precipitation.