

Houston Pilots Forecast Package



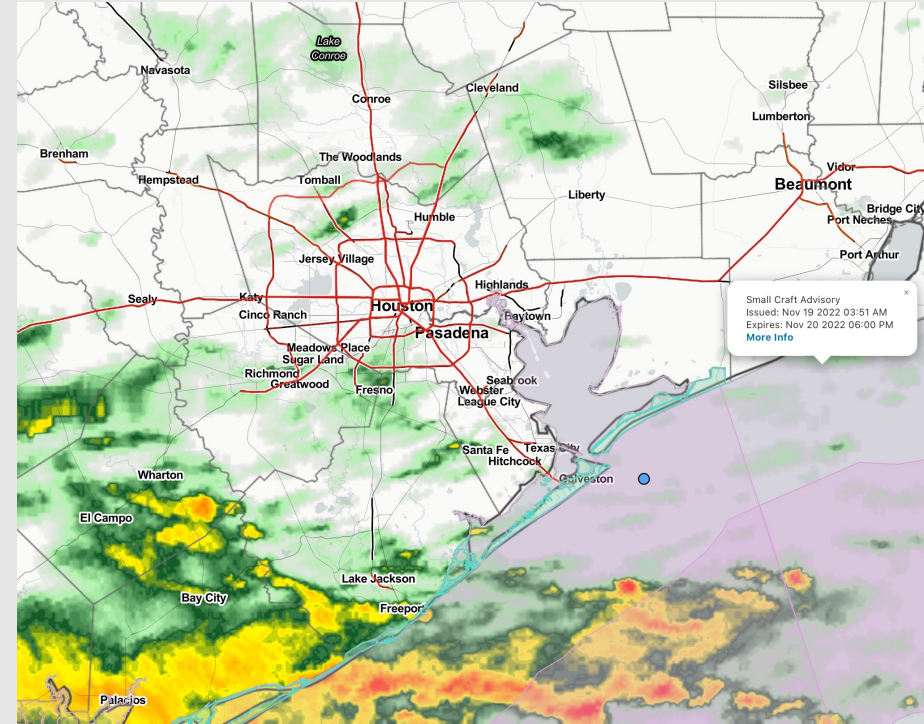
Updated: 5:30 AM CT

Saturday, November 19, 2022

Forecaster: Alyssa McClung

Weather Headlines

- Expecting a wet next three days with breaks in rain on Sunday. Heavier showers and storms will cause brief reductions in visibilities
- Favoring winds primarily out of the NE for the next few days and will stay elevated with sustained winds of 15 - 22+ kts possible at the boarding station. Gusts of ~30 kts possible today.
- Elevated winds + unfavorable wind direction will limit fog threat moving forward.
- Not anticipating any tropical activity concerns over the next 10 days.



Radar/NWS Alerts: 5:30 AM CT



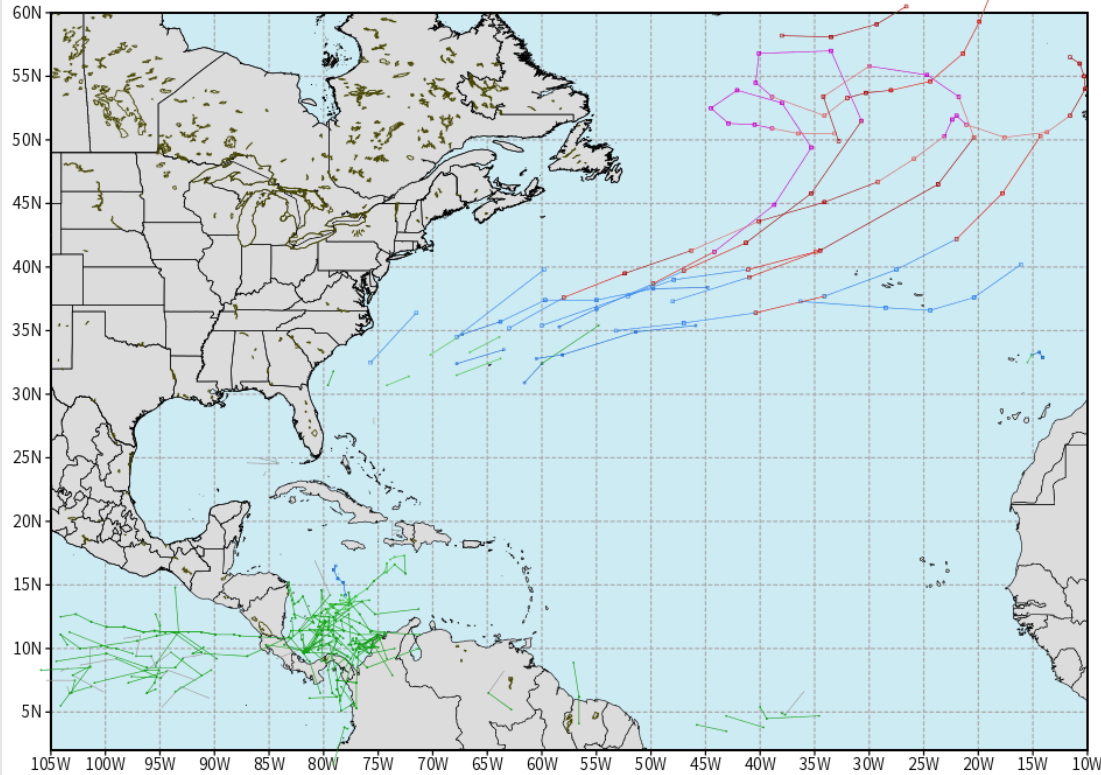
As always, please do not hesitate to reach out to us with any forecast questions via the chat option on the Weather Porthole or our on-call number, **(317)-560-8122** press 1 for forecast questions.

Houston Pilots Extended Range Tropical Report

European Data Tracks Next 10 Days

ECMWF ATLANTIC EPS Cyclone Locations --> Next [10-days]
INIT: 00Z19NOV2022 --> UNTIL 00Z29NOV2022

o-o ENSEMBLE MEAN
o-o 1000 - 1010 hPa
o-o 980 - 999 hPa
o-o 960 - 979 hPa
o-o 950 - 959 hPa
o-o < 950 hPa



weathermodels.com

**Not anticipating any tropical activity
for SE TX over the next 10 days.**

Confidence

Above
Normal

Below
Normal

The image contains two logos. On the left is the logo for BAM WX.COM, featuring the letters 'BAM' in a stylized font with a white 'A' and a black shadow, followed by 'WX.COM' in black and 'Weather. Made. Simple.' in blue and red below it. On the right is the logo for Houston Pilots, featuring a large red 'H' with a black outline and the text 'Houston Pilots' in white to its left.

**Above
Normal**

**Below
Normal**

[illegible]

Houston Pilots Wind Report



Example

Sustained wind 13 Knots
Gusts 18 Knots
Wind from the N

WS: 13
G:18
N

Time Knots	Sat 4am	Sat 5am	Sat 6am	Sat 7am	Sat 8am	Sat 9am	Sat 10am	Sat 11am	Sat 12pm	Sat 1pm	Sat 2pm	Sat 3pm	Sat 4pm	Sat 5pm	Sat 6pm	Sat 7pm	Sat 8pm	Sat 9pm	Sat 10pm	Sat 11pm	Sun 12am	Sun 1am	Sun 2am	Sun 3am	Sun 4am	Sun 5am	Sun 6am	Sun 7am	Sun 8am	Sun 9am	Sun 10am	Sun 11am	Sun 12pm	Sun 1pm	Sun 2pm	Sun 3pm
610 Bridge	2	5	4	4	3	6	6	6	6	6	7	6	6	6	5	10	10	9	9	8	8	8	8	7	8	8	8	8	8	9	9	9	8	8	7	
	10	12	9	11	8	10	12	12	13	12	13	14	13	15	15	17	16	15	15	15	15	15	15	16	16	16	16	16	15	15	15	13	12	12	12	
Kinder 1	2	5	4	4	2	6	6	6	6	5	6	7	6	5	5	10	10	9	9	8	8	8	8	7	8	8	8	8	9	9	9	8	8	7		
	11	12	10	11	8	10	13	12	13	12	12	14	12	14	16	17	16	15	15	15	15	15	15	16	16	16	16	16	15	15	14	13	12	12	12	
Greens Bayou	2	5	4	4	2	6	7	5	5	5	6	6	5	5	5	10	10	9	9	8	8	8	8	7	8	8	8	8	9	9	9	8	8	7		
	9	12	9	10	7	9	14	12	13	11	12	14	13	13	15	16	16	15	15	15	14	15	15	15	16	16	16	16	15	15	14	13	12	12	12	
Shell Crude	2	5	4	4	2	6	7	5	6	5	6	7	5	5	5	10	10	9	9	9	9	9	9	8	8	8	8	9	9	9	9	8	8	8		
	9	12	10	11	7	10	15	12	13	12	12	15	13	13	16	17	16	15	15	15	15	15	15	16	16	16	16	16	16	15	14	13	12	12	12	
Lynchburg Ferries	NNE	NNE	NNE	NNE	SW	N	NNE	NE	ENE	NE	NNE	NNE	NNE	NNE	NNE	NNE	N	N	NNE	NNE	NNE	NNE	NNE	NNE	NNE	NNE	NNE	NNE	NNE	NE	NE	NE	NE	NNE	NNE	
	2	4	4	3	2	6	8	5	5	5	6	7	6	5	5	10	10	9	9	9	9	9	9	8	9	9	9	9	10	10	9	8	8	8		
Exxon 3	8	11	10	10	7	10	16	13	13	12	12	15	14	13	16	16	16	15	15	15	14	15	15	15	16	16	16	16	16	15	14	13	12	12	12	
	NNE	NNE	NNE	NNE	W	N	NE	NE	ENE	NE	NNE	NNE	NNE	NNE	NNE	NNE	NNE	NNE	NNE	NNE	NNE	NNE	NNE	NNE	NNE	NNE	NNE	NNE	NE	NE	NE	NE	NE	NNE	NNE	
Morgans Point	3	4	5	4	2	6	8	6	5	6	6	7	7	5	5	11	10	10	10	10	10	9	10	9	9	9	10	9	10	10	10	9	8	8	8	
	11	12	13	12	9	11	16	13	12	13	13	16	16	15	17	17	16	15	15	16	16	16	16	16	17	17	17	17	17	16	15	13	12	12	12	
75/76	NNE	NNE	NNE	NNE	S	WNW	NE	ENE	ENE	NE	NNE	NNE	NNE	NNE	NNE	NNE	NNE	NNE	NNE	NNE	NNE	NNE	NNE	NNE	NNE	NNE	NNE	NNE	NE	NE	NE	NE	NE	NNE	NNE	
	6	7	7	5	7	10	8	8	8	8	9	9	9	7	7	12	12	11	11	11	11	11	11	11	11	11	11	11	11	11	11	10	9	9	9	
63/64	13	13	15	14	11	12	17	14	13	14	14	16	18	17	17	18	17	17	17	17	17	17	18	18	18	18	18	18	17	16	15	14	13	12	12	
	NNE	NNE	NNE	NNE	SE	SE	NE	ENE	ENE	NE	NNE	NNE	NNE	NNE	NNE	NNE	NNE	NNE	NNE	NNE	NNE	NNE	NNE	NNE	NNE	NNE	NNE	NNE	NE	NE	NE	NE	NE	NE	NNE	
51/52	11	12	13	13	10	11	13	12	13	14	14	14	15	14	14	14	14	14	14	14	14	14	14	14	14	14	14	13	13	14	13	13	12	11	10	10
	15	16	17	17	14	14	17	15	16	19	18	18	20	20	19	19	19	19	19	19	19	19	19	19	19	19	19	19	19	18	17	16	15	15	14	14
37/38	ENE	NE	NE	NE	NE	NNE	NE	ENE	ENE	NE	NNE	NNE	NNE	NNE	NNE	NNE	NNE	NNE	NNE	NNE	NNE	NNE	NNE	NNE	NNE	NNE	NNE	NNE	NNE	NE	NE	NE	NE	NE	NNE	NNE
	12	15	16	16	13	14	15	14	15	18	17	19	19	18	17	16	16	16	16	16	16	16	16	16	16	16	16	15	15	15	14	13	12	12	11	
25/26	16	18	18	18	15	16	18	16	17	21	21	19	21	22	21	21	20	20	20	20	20	20	20	20	20	20	20	20	20	19	18	17	16	15	15	14
	ENE	NE	NE	NE	NE	NE	NE	NE	NE	NE	NNE	NNE	NNE	NNE	NNE	NNE	NNE	NNE	NNE	NNE	NNE	NNE	NNE	NNE	NNE	NNE	NNE	NNE	NE	NE	NE	NE	NE	NE	NNE	NNE
1 & 2 Bravo	10	15	16	16	14	15	15	14	16	18	17	19	20	20	17	17	17	17	17	17	17	17	17	17	17	17	17	16	16	15	15	14	13	12	12	
	16	18	19	18	17	18	17	17	18	21	21	20	21	23	23	22	22	21	21	21	21	21	21	21	21	21	21	20	20	19	17	16	15	15	15	
11/12	ENE	NE	NE	NE	NE	NE	NE	NE	NE	NE	NNE	NNE	NNE	NNE	NNE	NNE	NNE	NNE	NNE	NNE	NNE	NNE	NNE	NNE	NNE	NNE	NNE	NNE	NE	NE	NE	NE	NE	NE	NNE	NNE
	10	15	16	15	15	16	14	16	18	17	18	18	19	20	20	18	18	18	17	17	17	17	18	18	18	17	17	17	16	15	14	13	13	13		
1 & 2 Bravo	15	18	18	17	17	19	15	19	20	20	20	20	23	23	23	23	22	23	22	22	22	22	22	23	23	23	22	21	20	19	18	17	16	16		
	NE	NE	NE	NE	NE	NNE	NE	NE	NE	NE	NNE	NNE	NNE	NNE	NNE	NNE	NNE	NNE	NNE	NNE	NNE	NNE	NNE	NNE	NNE	NNE	NNE	NNE	NE	NE	NE	NE	NE	NE	NNE	NNE
1 & 2 Bravo	12	15	15	14	14	16	14	17	18	16	16	16	16	18	18	20	19	19	19	18	18	18	18	18	18	18	18	18	17	17	16	15	14	14	14	
	16	18	19	17	17	19	17	19	21	19	19	20	20	22	23	24	24	23	23	23	23	22	23	23	23	23	23	22	22	21	20	19	17	16	16	
1 & 2 Bravo	ENE	ENE	NE	NE	NE	NE	NE	NE	NE	NE	NE	NNE	NNE	NNE	NNE	NNE	NNE	NNE	NNE	NNE	NNE	NNE	NNE	NNE	NNE	NNE	NNE	NNE	NE	NE	NE	NE	NE	NE	NNE	NNE
	16	18	18	17	18	19	21	19	20	20	19	21	20	22	22	21	21	21	21	20	20	20	20	20	20	20	20	19	19	18	17	16	16	16	16	
1 & 2 Bravo	17	19	20	18	19	20	22	20	21	21	20	22	21	23	23	25	25	24	24	24	24	24	24	24	25	24	24	23	22	21	20	19	18	17	17	
	ENE	ENE	ENE	NE	NE	ENE	ENE	NE	NE	NE	NE	NE	NNE	NNE	NNE	NNE	NNE	NNE	NNE	NNE	NNE	NNE	NNE	NNE	NNE	NNE	NNE	NE	NE	NE	NE	NE	NE	NE	NNE	NNE

See slides below for official thoughts on winds.

Houston Pilots: sat. 11/19/2022

Forecast Discussion

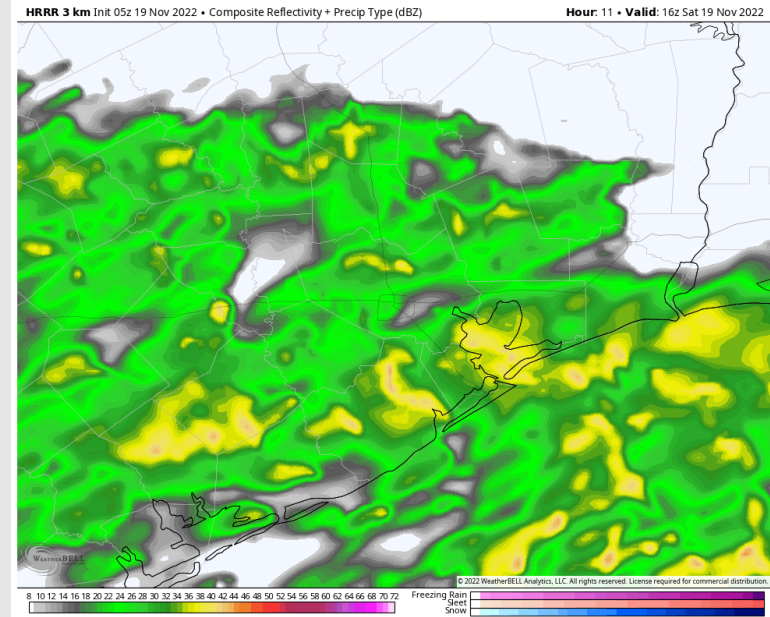
Precip: Anticipating widespread showers/storms to continue Saturday morning. By 7 AM, coverage will increase to 80% producing moderate to at times heavy rain. By 3 PM, coverage will slightly decrease to 50% and continue for the rest of the evening and overnight. Lightning and locally downpours cannot be ruled out.

Wind: Sustained winds out of the N/NE for the entire day. Winds N of Morgan's Point will be at 4 - 10 kts for the entire day. Winds S of Morgan's Point will be at 15-20 kts until 9 AM, then increase to 18-26 kts for the rest of the day. Around 12 PM, winds near the boarding station increase to 22-27 kts. Gusts of ~30 kts will be possible throughout the afternoon as showers/storms move through.

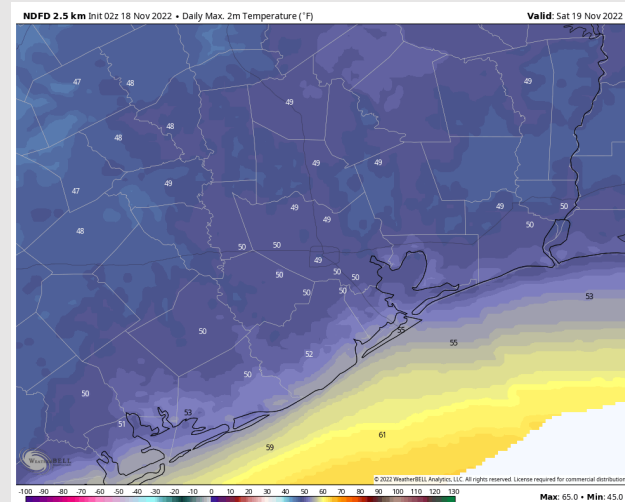
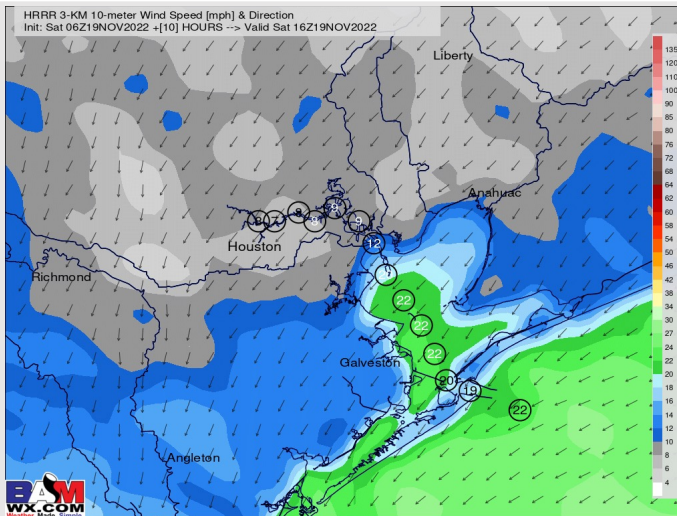
Temps: High temperatures will be in the mid 50s near the boarding station and near 50 F at all other stations.

Visibility: Not anticipating any fog concerns. Showers/storms throughout the day may cause reduced visibility.

Precip Forecast: 10 AM CT



Wind Speed
10 AM CT



High Temps
Saturday

Houston Pilots: Sun. 11/20/2022

Forecast Discussion

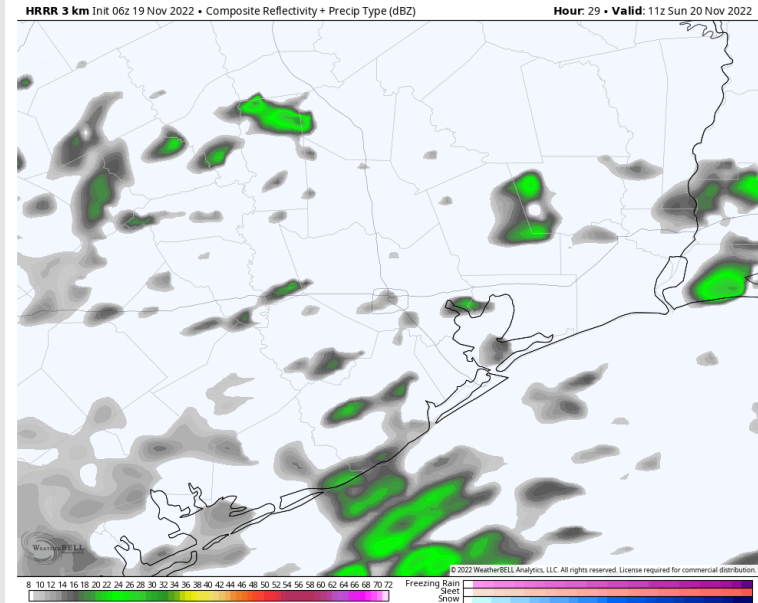
Precip: Sporadic showers 20-30% will continue until 7/8 AM. Anticipating dry conditions thereafter and for the rest of the day.

Wind: Sustained winds from the E/NE throughout the day Sunday. Sustained winds at 8-10 kts N of Morgan's Point and 12-20 kts S of Morgan's Point Sunday AM. By 1 PM winds N of Morgan's Point will die down to 5-7 kts, while winds S of Morgan's Point will decrease to 8-15 kts for the rest of the day.

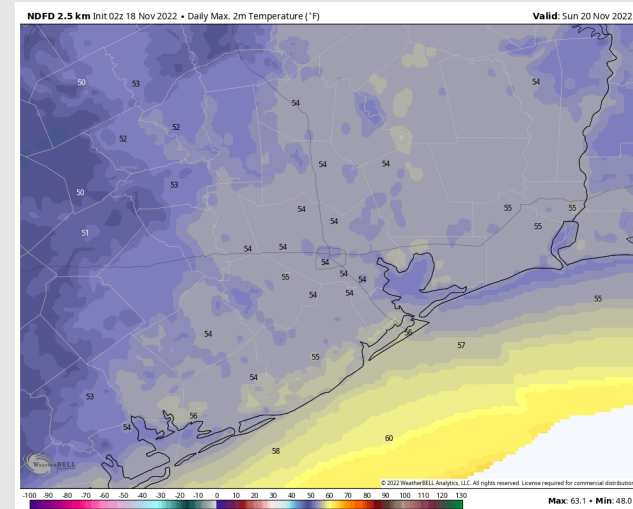
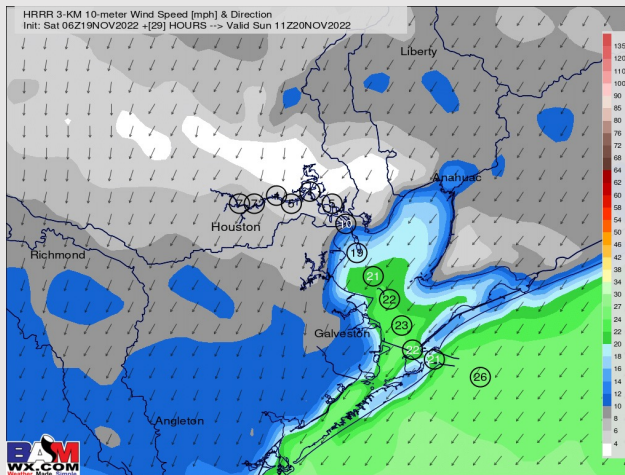
Temps: High temperatures will be in the mid 50s F across all stations.

Visibility: Not anticipating any visibility concerns at this time.

Precip Forecast: 5 AM CT



Wind Speed
5 AM CT



High Temps
Sunday

Houston Pilots: Mon. 11/21/2022

Forecast Discussion

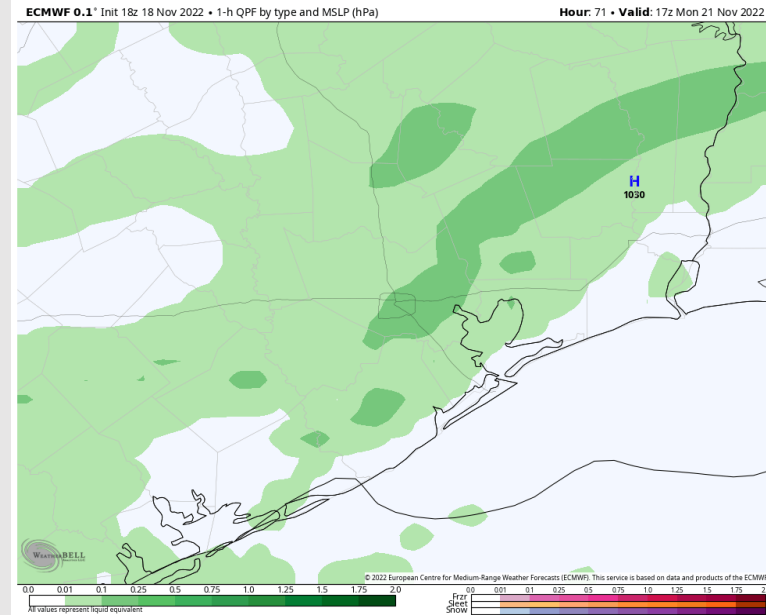
Precip: A 20% chance of scattered showers in the morning from 12 AM – 6 AM. Then anticipating light rain to gradually fill into the region by 8 AM with the greatest chances of showers and thunderstorms from 9 AM – 2 PM. From 2 PM to 10 PM, rain chances slowly taper off to dry conditions expected beyond 11 PM.

Wind: Sustained winds from the NE for the entire day. Winds N of Morgan's Point will be 5 – 10 kts. Winds S of Morgan's Point to 25/26 will be at 11 – 16 kts, while stations 11/12 and Boarding station can expect to see the highest winds at 13 – 18 kts. Wind gusts of 20 – 22 kts will be possible all day S of Morgan's Point.

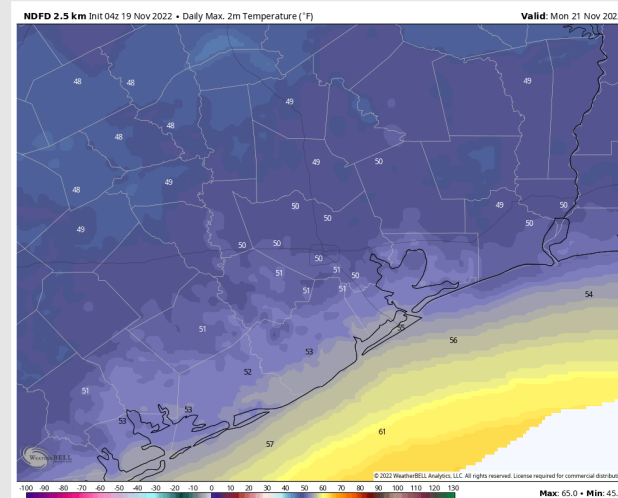
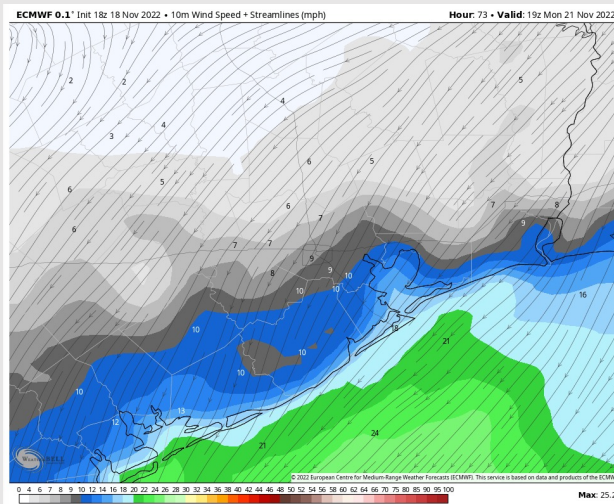
Temps: High temps will be in the low to mid 50s F across all stations.

Visibility: Visibilities could briefly reduce to less than 3 miles under some of the moderate rain showers in the afternoon, mainly from 10 AM – 1 PM N of Morgan's Point.

Precip Forecast: 11 AM CT

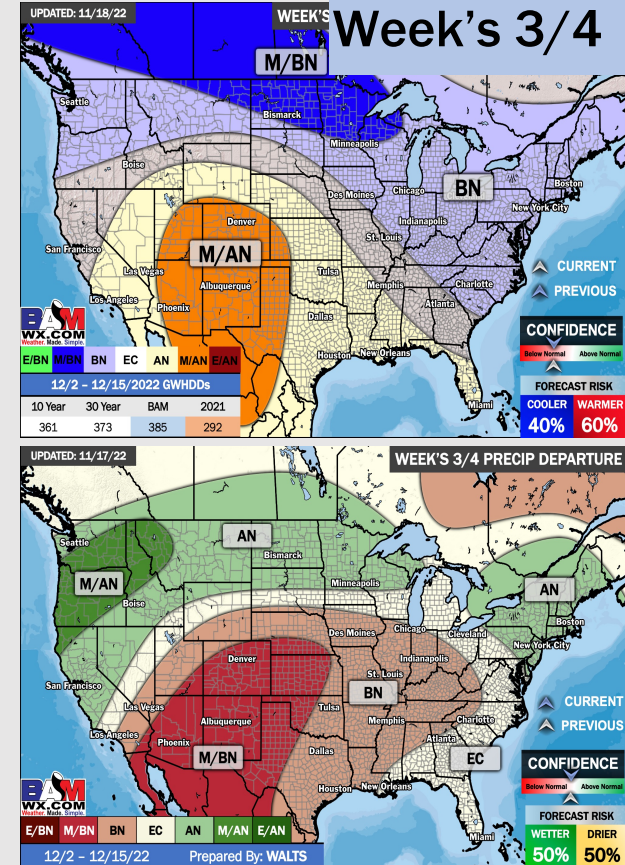
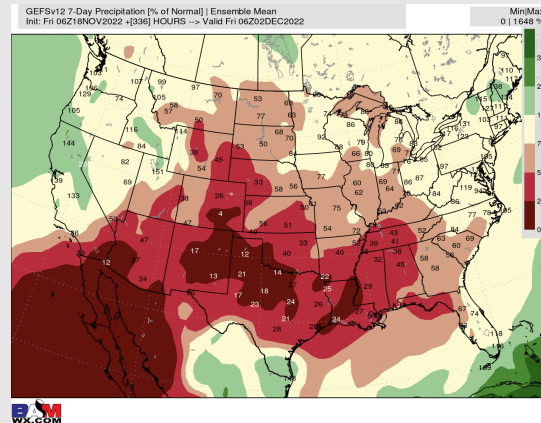
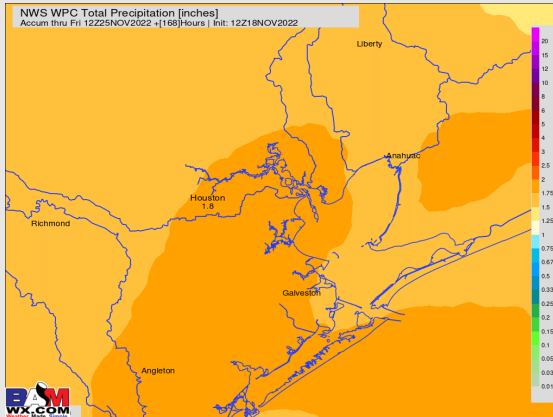
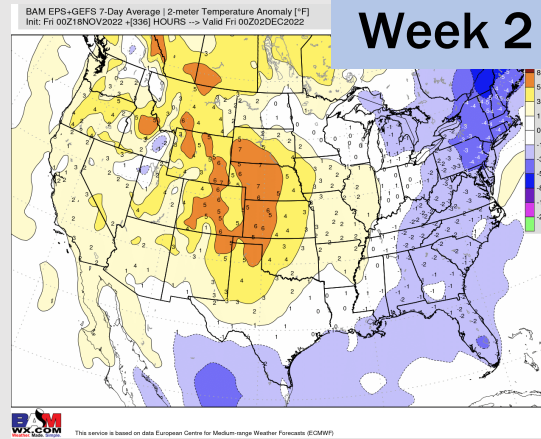
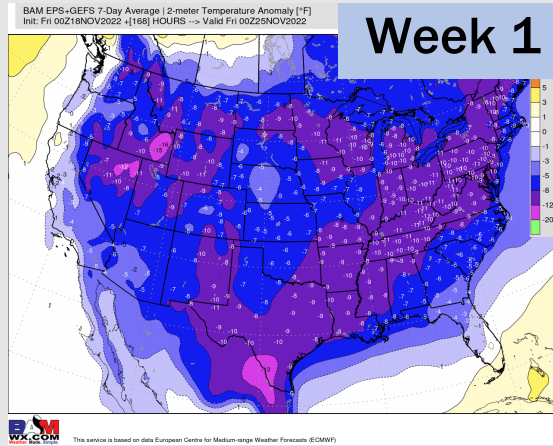


Wind Speed
1 PM CT



High Temps
Monday

Houston Pilots: 11/19/22



- Temperatures expected to be much below normal this week as much of the country is below average. Best chance for precipitation tonight and tomorrow.
- Week 2 to feature below normal temperatures and below normal precipitation.
- The weeks $\frac{3}{4}$ timeframe looks to feature above normal temperatures and below normal risks for precipitation.