

Houston Pilots Forecast Package



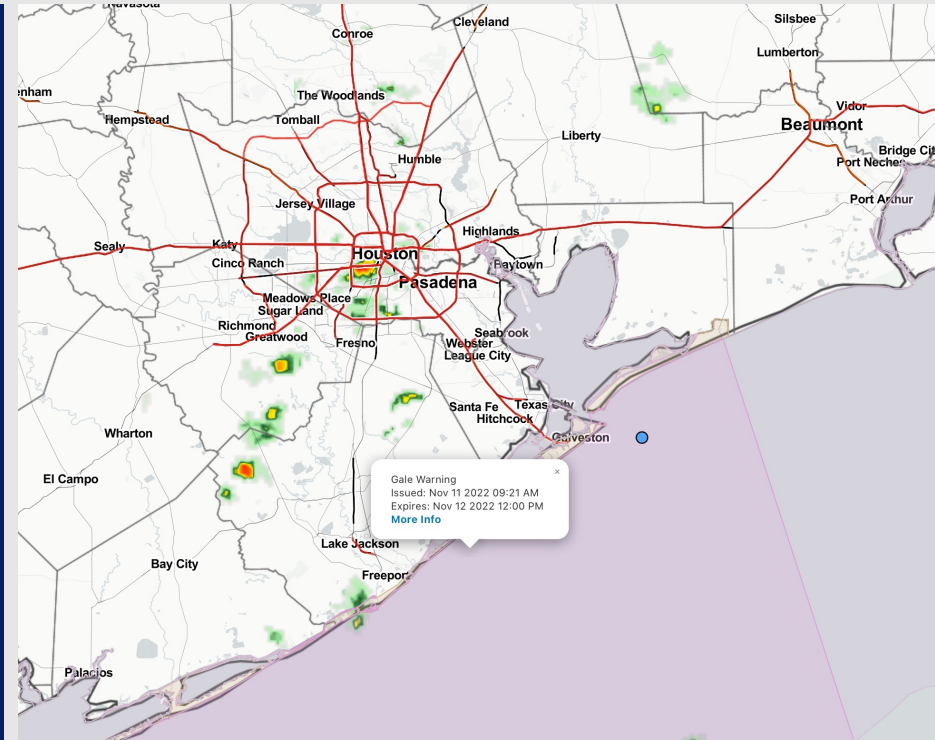
Updated: 1:30 PM CT

Friday, November 11, 2022

Forecaster: Alyssa McClung

Weather Headlines

- Storms/showers anticipated to start this evening and last through early AM hours tomorrow.
- Sustained calmer winds will continue to come out of the SE today until front moves through this evening where they will flip to be out of the NW.
- Higher winds gusts expected this afternoon and Saturday morning of over 30 kts.
- Not anticipating any concerns for reduced visibility at this time.



Radar/ NWS Alerts: 1:30 PM CT

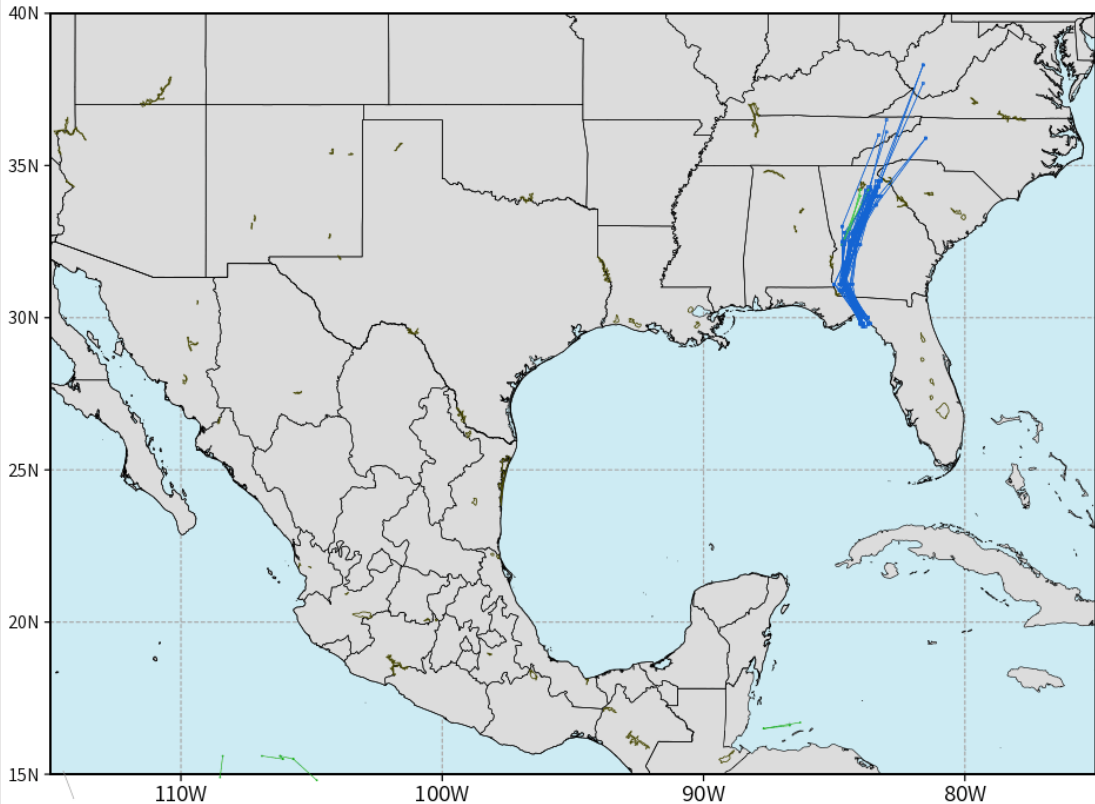


As always, please do not hesitate to reach out to us with any forecast questions via the chat option on the Weather Porthole or our on-call number, **(317)-560-8122** press 1 for forecast questions.

European Data Tracks Next 10 Days

ECMWF GULF EPS Cyclone Locations --> Next [10-days]
INIT: 00Z11NOV2022 --> UNTIL 00Z21NOV2022

- o-o ENSEMBLE MEAN
- o-o 1000 - 1010 hPa
- o-o 980 - 999 hPa
- o-o 960 - 979 hPa
- o-o 950 - 959 hPa
- o-o < 950 hPa



weathermodels.com

Not anticipating any tropical activity for SE TX over the next 10 days.

Confidence



Above Normal Below Normal

Houston Pilots Wind Report



Example

Sustained wind 13 Knots
Gusts 18 Knots
Wind from the N

WS: 13
G:18
N

Time Knots	Fri 12pm	Fri 1pm	Fri 2pm	Fri 3pm	Fri 4pm	Fri 5pm	Fri 6pm	Fri 7pm	Fri 8pm	Fri 9pm	Fri 10pm	Fri 11pm	Sat 12am	Sat 1am	Sat 2am	Sat 3am	Sat 4am	Sat 5am	Sat 6am	Sat 7am	Sat 8am	Sat 9am	Sat 10am	Sat 11am	Sat 12pm	Sat 1pm	Sat 2pm	Sat 3pm	Sat 4pm	Sat 5pm	Sat 6pm	Sat 7pm	Sat 8pm	Sat 9pm	Sat 10pm	Sat 11pm				
610 Bridge	4	3	4	5	4	2	9	12	12	13	13	11	12	13	12	12	12	12	12	12	12	13	13	13	12	13	13	12	11	10	8	7	7	7	6	6				
	6	6	6	8	6	3	18	22	24	25	26	23	25	26	26	22	22	22	21	22	21	21	20	19	19	19	19	18	18	17	14	14	14	13	12	12				
Kinder 1	WSW	SW	S	SSW	ENE	ESE	NNW	NNW	NNW	NNW	NNW	NNW	NNW	NNW	NNW	N	N	N	N	N	N	N	N	N	N	N	N	N	W	NNW	SSE	N	N	NNE	NNE					
	4	3	5	6	4	2	8	12	12	13	13	12	12	13	11	12	12	12	12	12	13	13	13	13	13	12	11	10	8	7	7	6	6	6	6					
Greens Bayou	6	5	7	9	6	4	15	21	23	25	26	24	26	26	26	22	22	21	21	21	21	21	20	19	19	19	18	18	16	14	14	14	13	12	12					
	SW	SW	SSE	S	ENE	ENE	NNW	NNW	NNW	NNW	NNW	NNW	NNW	NNW	NNW	N	N	N	N	N	N	N	N	N	N	N	N	N	W	NNW	S	N	N	NNE	NNE					
Shell Crude	3	3	7	7	5	3	6	11	12	12	13	12	13	12	11	12	12	12	12	12	13	13	13	13	13	13	12	12	10	8	7	7	6	6	6					
	6	4	7	8	5	3	4	12	12	13	14	12	13	12	11	13	12	12	12	12	13	13	13	13	13	14	13	12	12	10	8	7	7	6	6	6				
Lynchburg Ferries	SW	SSE	SE	SE	ENE	ENE	W	NNW	NNW	NNW	NNW	NNW	NNW	NNW	NNW	N	N	N	N	N	N	N	N	N	N	N	N	N	NW	WSW	N	N	NNE	NNE						
	3	5	8	9	5	3	3	11	12	13	14	13	12	12	11	13	12	13	12	12	13	14	13	13	13	14	13	12	10	9	7	7	7	6	6					
Exxon 3	6	6	11	12	7	6	6	20	22	24	25	25	24	24	25	22	21	21	21	21	21	20	19	19	18	18	18	17	16	14	14	13	13	12	11	9	8	8	7	7
	SSW	ESE	SE	SE	ENE	E	SSW	NNW	NNW	NNW	NNW	NNW	NNW	NNW	NNW	N	N	N	N	N	N	NNW	NW	NW	NNW	N	N	N	N	NW	SSE	N	N	N	NNE	NNE				
Morgans Point	7	8	10	13	9	7	8	18	22	23	25	26	24	25	25	22	22	22	22	22	22	22	21	20	19	18	18	18	17	16	15	15	15	15	14	13	13	13		
	SSE	SE	SSE	SE	SSE	E	SE	NNW	NNW	NNW	NNW	NNW	NNW	NNW	NNW	NNW	N	N	N	N	N	N	W	W	NNW	N	N	N	N	NW	NE	N	N	N	NNE	NNE				
75/76	5	8	6	10	9	4	5	10	14	15	17	15	15	15	14	15	14	14	14	14	15	15	14	14	14	14	14	14	13	12	10	10	9	9	9	9	9			
	8	10	10	16	14	10	11	15	22	23	26	26	25	26	26	23	23	23	23	23	23	23	22	21	20	19	18	18	18	17	16	16	16	16	15	15	15	15		
63/64	SE	SE	SE	SE	S	ESE	ESE	W	NNW	NNW	NNW	NNW	NNW	NNW	NNW	N	N	N	N	N	N	N	N	N	N	N	N	N	N	N	N	N	N	N	N	NNE	NNE			
	6	10	12	16	14	12	10	24	26	28	26	27	28	28	25	24	24	24	24	24	23	22	21	20	19	18	18	18	17	17	17	17	17	17	17	17	17			
51/52	SE	SE	SE	SE	SSE	SSE	ESE	ESE	NNW	NNW	NNW	NNW	NNW	NNW	NNW	N	N	N	N	N	N	ESE	ESE	SW	N	N	N	N	N	N	N	N	N	N	N	NNE	NNE			
	7	10	10	12	9	10	8	8	22	24	25	23	24	25	24	19	19	18	18	18	17	17	16	16	16	16	16	16	15	14	14	14	14	14	14	14	14	14		
37/38	9	12	13	15	13	15	14	10	26	27	29	27	28	29	29	26	25	25	25	24	24	23	22	20	19	19	18	18	18	18	18	18	18	18	18	18	18	18		
	6	8	9	10	8	10	10	8	18	24	26	25	25	25	25	20	20	19	19	19	18	18	17	17	16	16	16	16	15	15	15	15	15	15	15	15	15	15		
25/26	SE	SE	SE	SE	SE	SSE	SSE	ESE	NNW	NNW	NNW	NNW	NNW	NNW	NNW	N	N	N	N	N	N	S	NNE	NNE	NE	N	N	N	N	N	N	N	N	N	N	NNE	NNE			
	8	10	11	12	12	14	16	17	17	29	30	30	30	28	28	26	26	26	25	25	25	24	23	22	21	20	19	19	19	19	19	19	19	19	19	19	19	19		
1 & 2 Bravo	5	8	8	8	8	8	9	10	24	24	25	25	23	24	21	21	21	20	20	20	19	19	18	17	17	17	17	16	16	16	16	16	16	16	16	16	16	16		
	9	9	11	11	12	13	14	17	15	29	29	30	30	28	28	27	27	26	26	26	25	25	24	22	21	20	19	18	18	18	18	18	18	18	18	18	18	18		

See slides below for official thoughts on winds.

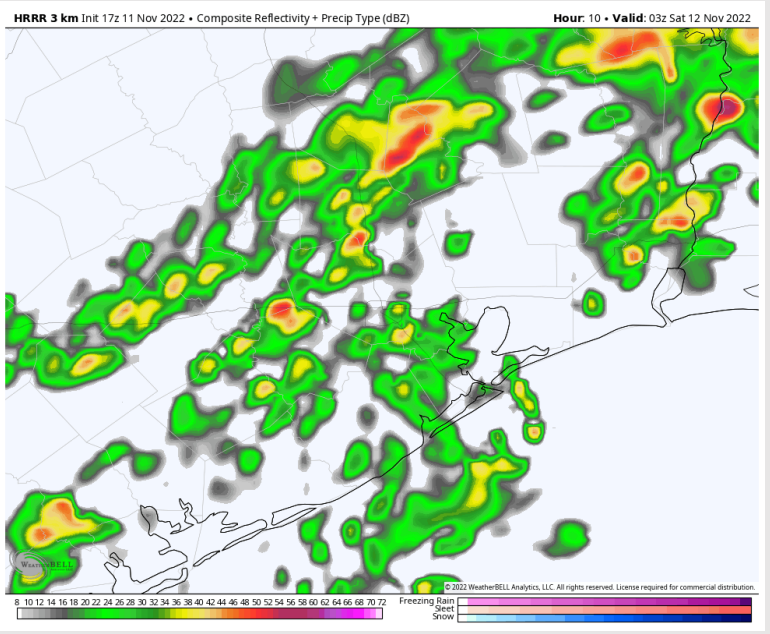
Houston Pilots: Fri. 11/11/2022



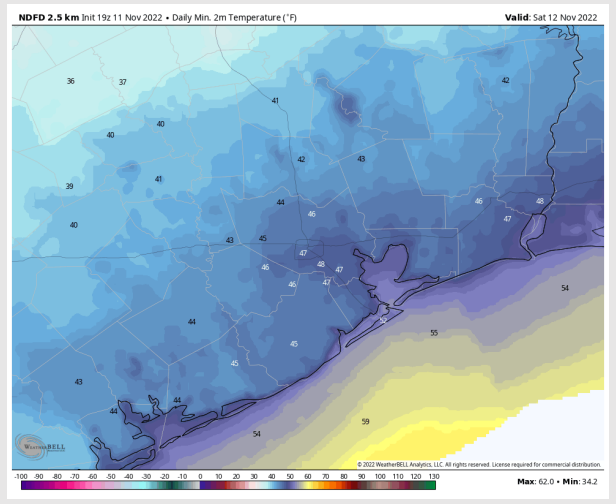
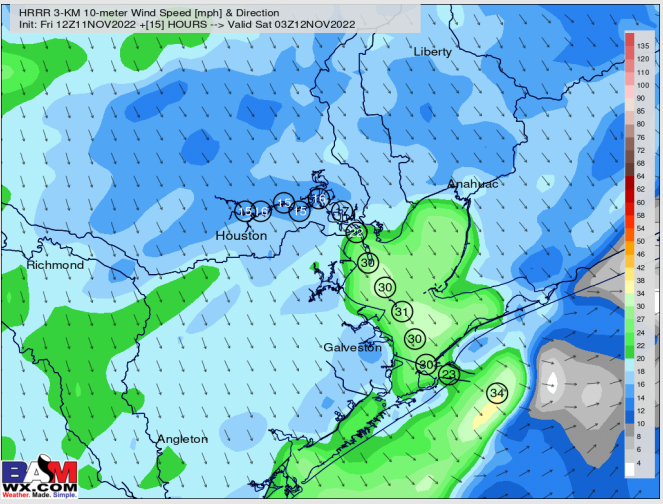
Forecast Discussion

- Precip:** Anticipating a couple isolated showers/storms with scattered coverage starting around 3 - 4 PM and continue through the rest of the night. Expecting lightning and locally heavy downpours with these storms.
- Wind:** Winds generally out of the SE at 6 – 10 kts. Starting at 6 PM winds will shift out of the NW and increase to 17 – 26 kts , with stations N. of Morgan’s Point less at 10– 14 kts. Wind gusts of 30+ kts possible for all stations after sundown.
- Temps:** Low temperatures Saturday morning in the mid 50s F at the boarding statin and in the upper 40s F for all other stations.
- Visibility:** Not anticipating any visibility concerns at this time.

Precip Forecast: 9 PM CT



Wind Speed 9 PM CT



Low Temps Saturday AM

Houston Pilots: sat. 11/12/2022



Forecast Discussion

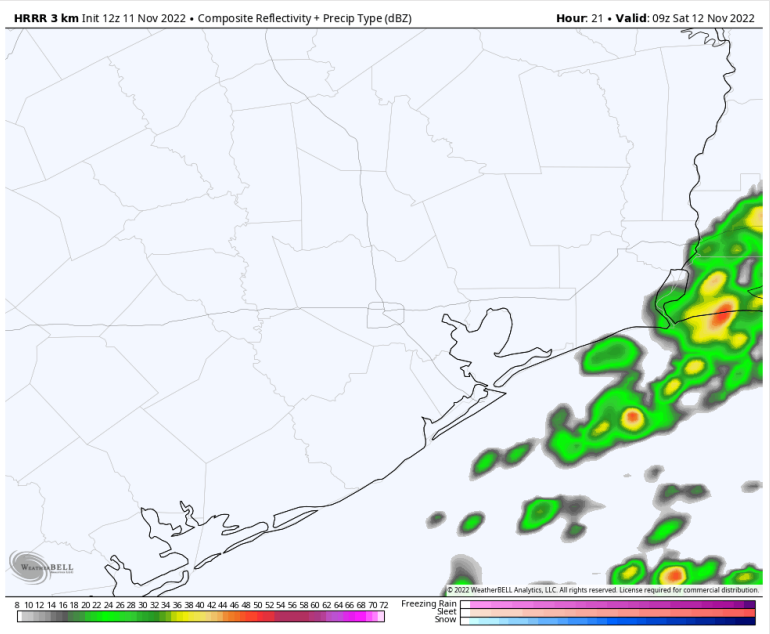
Precip: Anticipating shower/storm chances to continue through 3 - 4 AM on Saturday morning. After 3 - 4 AM, expecting dry conditions the rest of the day.

Wind: Winds generally out of the NNW throughout majority of the day. Sustained winds for stations north of Morgan's Point at 10-15 kts and stations south of Morgan's Point at 17-23 kts. Around 8 PM, winds will begin to veer from the NE. Winds gusts of 30+ kts possible all day Saturday.

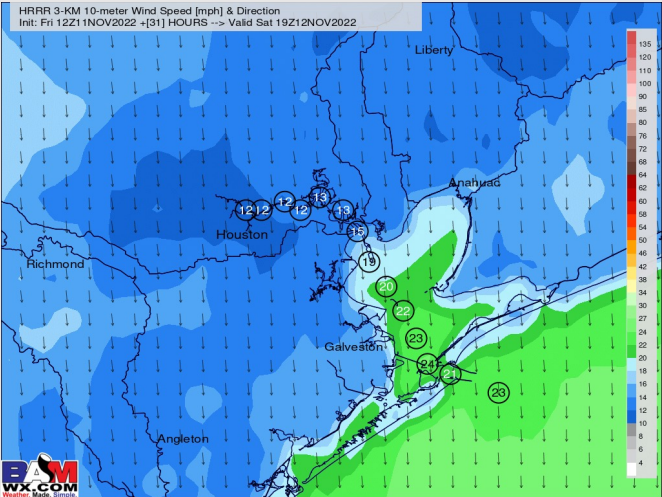
Temps: High temperatures Saturday in the low/mid 60s F for all stations.

Visibility: Not anticipating visibility concerns at this time.

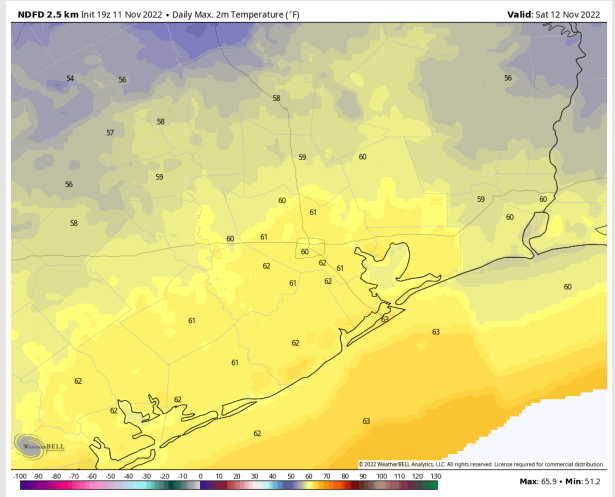
Precip Forecast: 3 AM CT



Wind Speed
1 PM CT



High Temps
Saturday



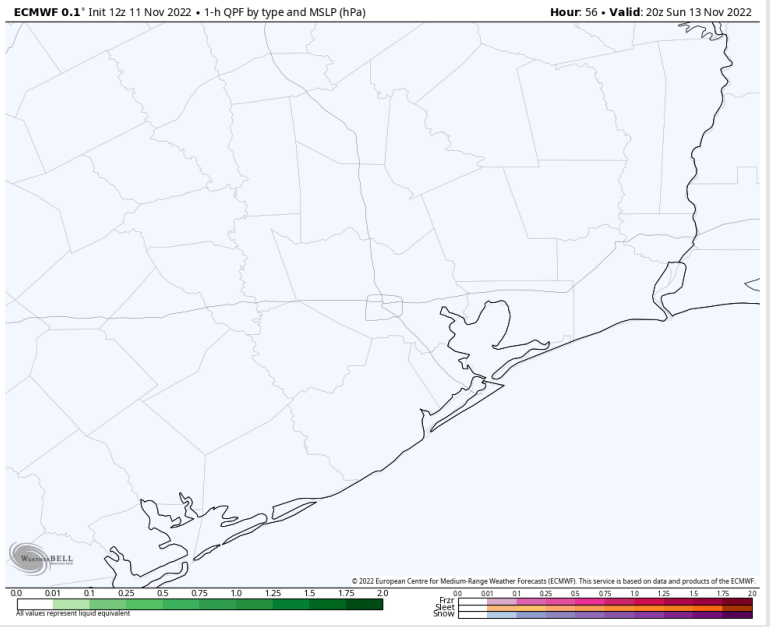
Houston Pilots: Sun. 11/13/2022



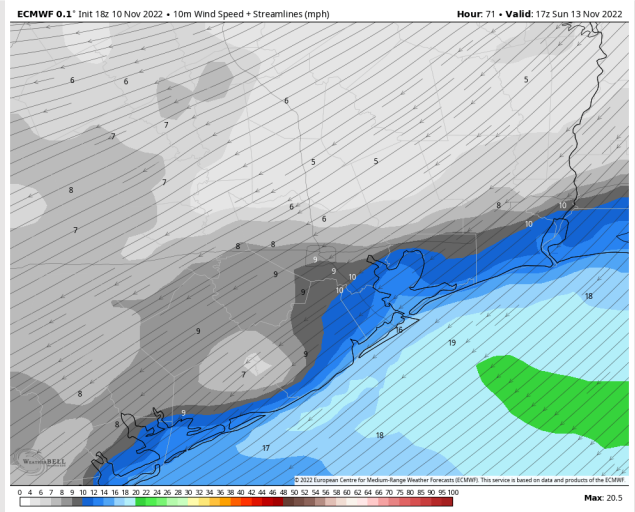
Forecast Discussion

- Precip:** Anticipating dry conditions throughout the day Sunday.
- Wind:** Sustained winds out of the NE Sunday AM. Winds N of Morgan's Point at 8-13 kts, while winds S of Morgan's Point at 13-18 kts until 11 AM. After 11 AM winds begin to shift out of the E, winds N of Morgan's Point decrease to 3-7 kts and winds S of Morgan's Point decrease to 7-12 kts for the rest of the evening.
- Temps:** High temps Sunday in the low 60s for all stations.
- Visibility:** No concerns for reduced visibility at this time.

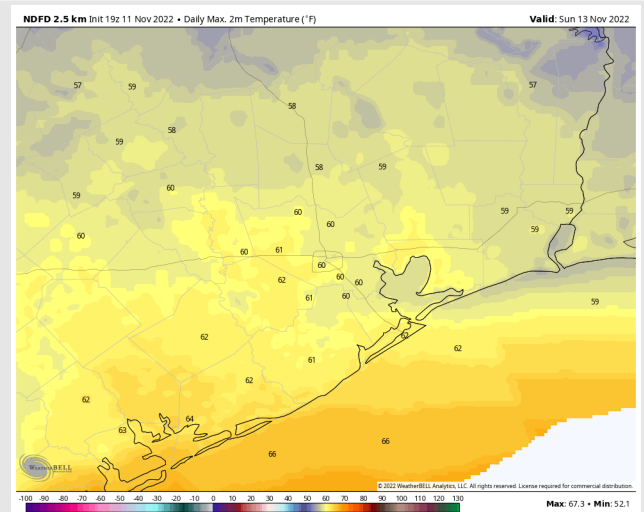
Precip Forecast: 12 PM CT



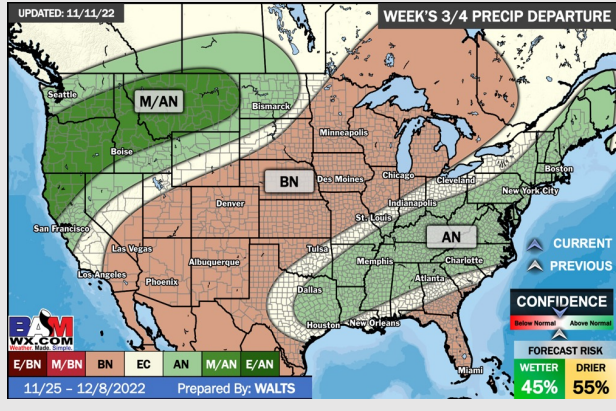
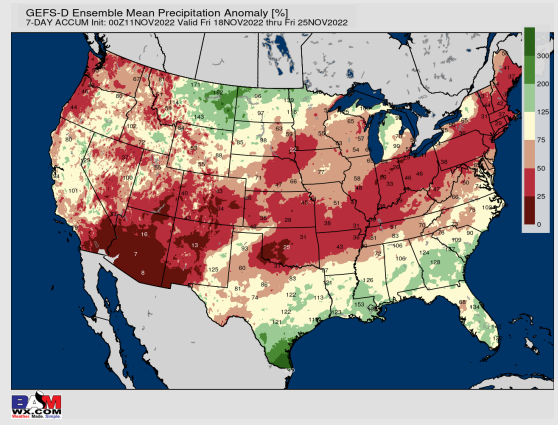
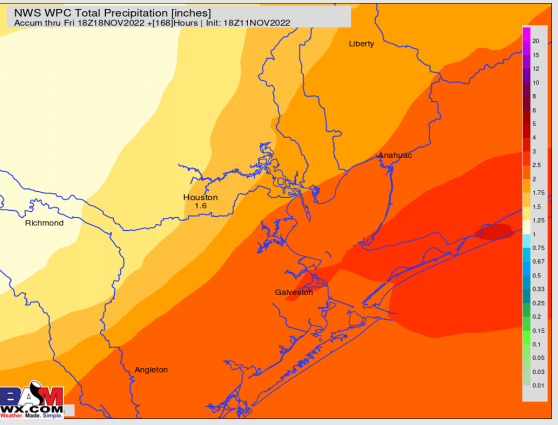
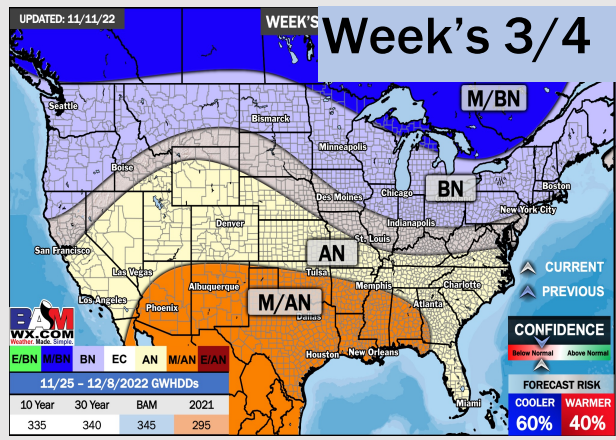
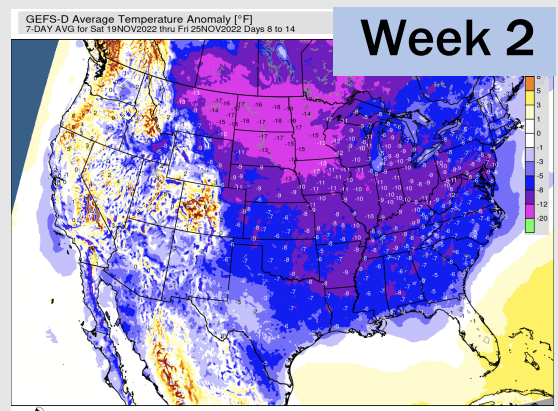
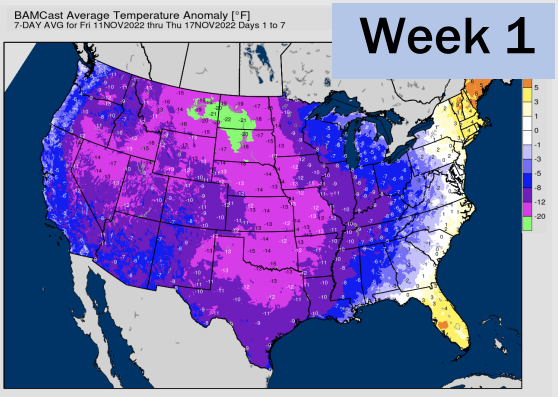
Wind Speed
11 AM CT



Low Temps
FRI AM



Houston Pilots: 11/11/22



- Temperatures expected to be below normal this week. Better chances for precipitation arrive tonight into tomorrow morning.
- Week 2 to feature below normal temperatures and above normal precipitation.
- The weeks 3/4 timeframe looks to feature above normal temperatures and above normal risks for precipitation.