

Houston Pilots Forecast Package



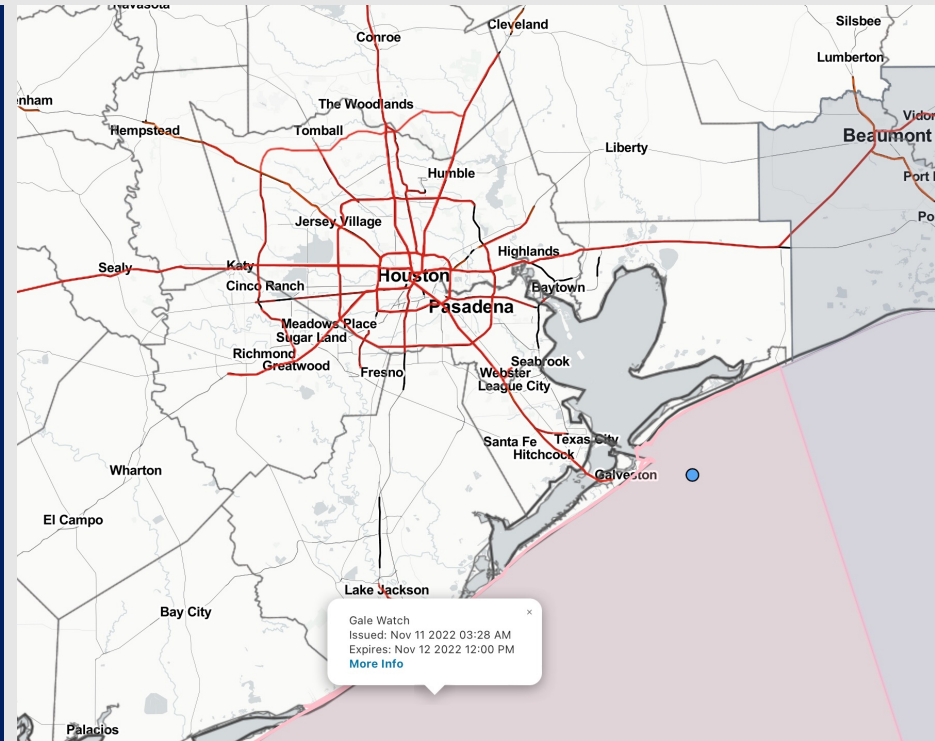
Updated: 5:45 AM CT

Friday, November 11, 2022

Forecaster: Alyssa McClung

Weather Headlines

- Storms/showers anticipated to start this afternoon and last through early AM hours on Saturday.
- Sustained calmer winds will continue to come out of the SE today until front moves through this evening where they will flip to be out of the NW.
- Higher winds gusts expected this afternoon and Saturday morning of over 30 kts.
- **Anticipating fog (reduced visibility of 0.5) to be a risk for stations North of Morgan's Point until 9 AM. More details on the next slide.**



Radar/ NWS Alerts: 5:10 AM CT



As always, please do not hesitate to reach out to us with any forecast questions via the chat option on the Weather Porthole or our on-call number, **(317)-560-8122** press 1 for forecast questions.

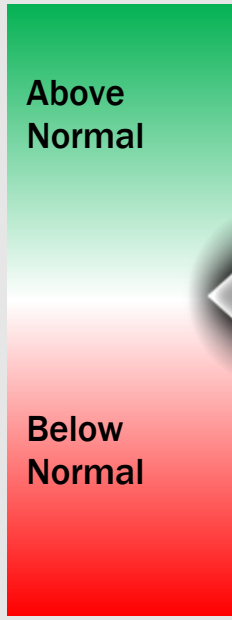
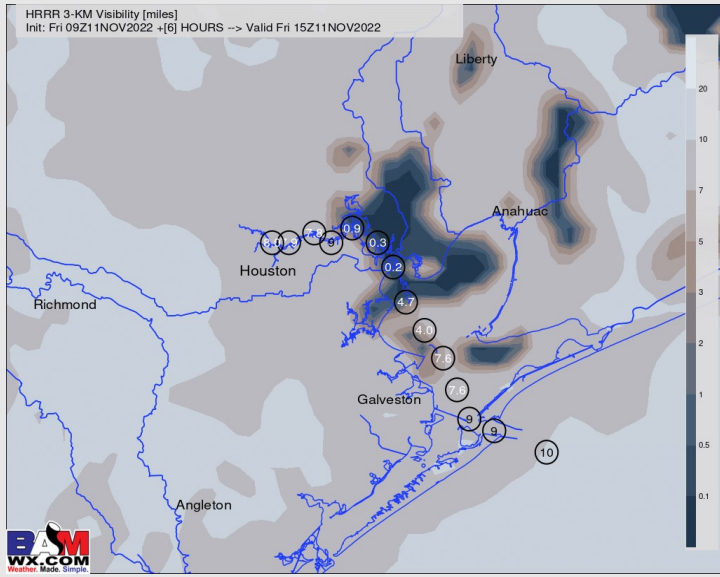
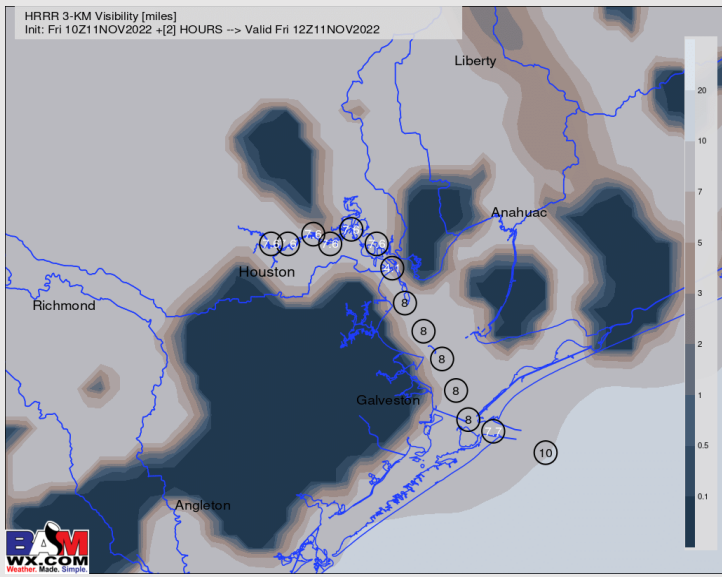
Houston Pilots Visibility Report



6 AM FRI Visibility (miles)

8 AM FRI Visibility (miles)

Confidence



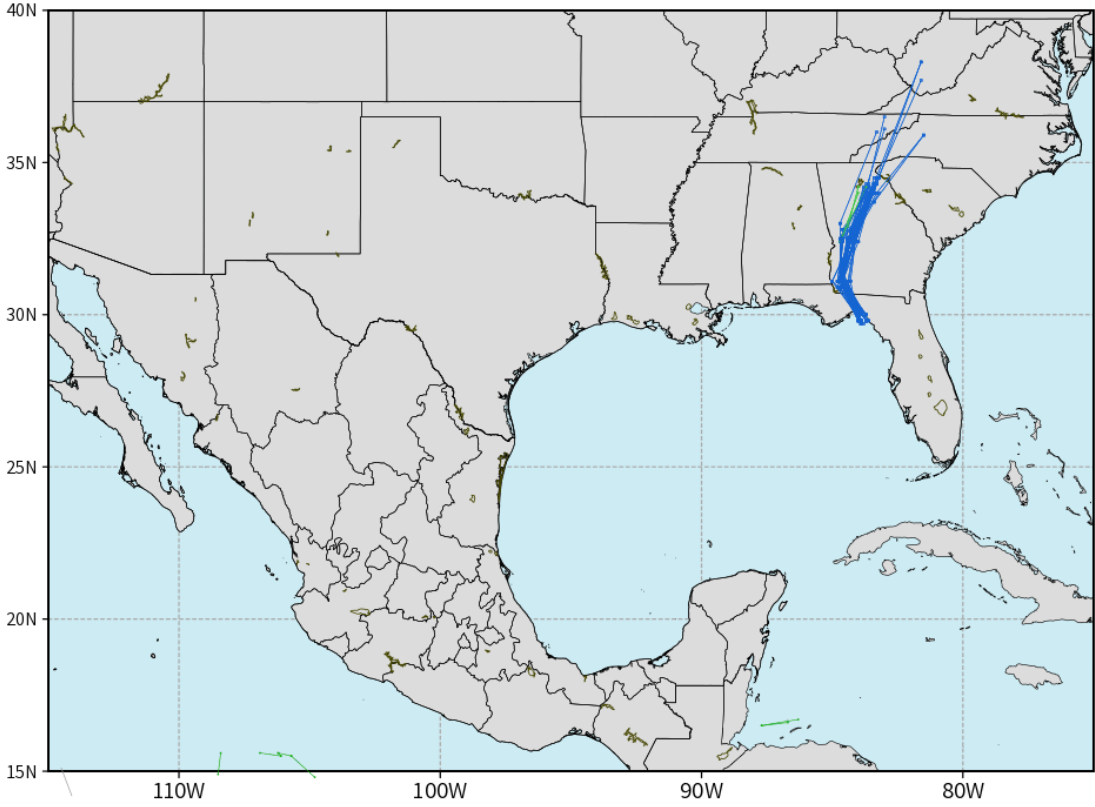
Reduced Visibility Threat
Current - 9 AM FRI **Low**

- Although simulated visibility images are not perfect, anticipating **patchy** dense fog to be possible for stations North of Stations 63/64 out through 9 AM CT this morning.
- Visibility of less than 0.5 mile will be possible but latest observations plus our forecast is for this threat to remain low.
- Outside of this the fog risk until 9 AM CT, not anticipating any other fog threats for the rest of the day.

European Data Tracks Next 10 Days

ECMWF GULF EPS Cyclone Locations --> Next [10-days]
INIT: 00Z11NOV2022 --> UNTIL 00Z21NOV2022

- o-o ENSEMBLE MEAN
- o-o 1000 - 1010 hPa
- o-o 980 - 999 hPa
- o-o 960 - 979 hPa
- o-o 950 - 959 hPa
- o-o < 950 hPa



weathermodels.com

Not anticipating any tropical activity for SE TX over the next 10 days.

Confidence



Above Normal Below Normal

Houston Pilots Visibility Report



Time	Fri 4am	Fri 5am	Fri 6am	Fri 7am	Fri 8am	Fri 9am	Fri 10am	Fri 11am	Fri 12pm	Fri 1pm	Fri 2pm	Fri 3pm	Fri 4pm	Fri 5pm	Fri 6pm	Fri 7pm	Fri 8pm	Fri 9pm	Fri 10pm	Fri 11pm	Sat 12am	Sat 1am	Sat 2am	Sat 3am	Sat 4am	Sat 5am	Sat 6am	Sat 7am	Sat 8am	Sat 9am	Sat 10am	Sat 11am	Sat 12pm	Sat 1pm	Sat 2pm	Sat 3pm	
610 Bridge	6	3	0.91	1	2	10	10	10	10	10	10	10	10	10	7	7	6	7	10	10	10	10	10	10	10	10	10	10	10	10	10	10	10	10	10	10	
Kinder 1	6	3	2	2	2	10	10	10	10	10	10	10	10	10	7	7	6	8	10	10	10	10	10	10	10	10	10	10	10	10	10	10	10	10	10	10	
Greens Bayou	6	4	3	2	2	10	10	10	10	10	10	10	10	10	7	7	6	8	10	10	10	10	10	10	10	10	10	10	10	10	10	10	10	10	10	10	
Shell Crude	6	5	3	2	2	10	10	10	10	10	10	10	10	10	7	7	6	9	10	10	10	10	10	10	10	10	10	10	10	10	10	10	10	10	10	10	
Lynchburg Ferries	6	5	3	2	2	10	10	10	10	10	10	10	10	10	7	7	6	9	8	10	10	10	10	10	10	10	10	10	10	10	10	10	10	10	10	10	
Exxon 3	6	5	4	2	4	10	10	10	10	10	10	10	10	10	7	7	6	9	9	10	10	10	10	10	10	10	10	10	10	10	10	10	10	10	10	10	
Morgans Point	6	5	5	3	9	10	10	10	10	10	10	10	10	10	7	7	7	9	9	10	10	10	10	10	10	10	10	10	10	10	10	10	10	10	10	10	
75/76	6	5	5	3	10	10	10	10	10	10	10	10	10	10	7	7	8	9	10	10	10	10	10	10	10	10	10	10	10	10	10	10	10	10	10	10	
63/64	10	5	5	6	10	10	10	10	10	10	10	10	10	10	9	7	8	9	10	10	10	10	10	10	10	10	10	10	10	10	10	10	10	10	10	10	
51/52	10	9	8	7	10	10	10	10	10	10	10	10	10	10	9	8	8	9	8	10	10	10	10	10	10	10	10	10	10	10	10	10	10	10	10	10	
37/38	10	10	10	10	10	10	10	10	10	10	10	10	10	10	9	8	8	9	8	10	10	10	10	10	10	10	10	10	10	10	10	10	10	10	10	10	10
25/26	10	10	10	10	10	10	10	10	10	10	10	10	10	10	10	9	8	9	8	8	10	10	10	10	10	10	10	10	10	10	10	10	10	10	10	10	10
11/12	10	10	10	10	10	10	10	10	10	10	10	10	10	10	10	10	8	9	8	8	10	9	10	10	10	10	10	10	10	10	10	10	10	10	10	10	10
1 & 2 Bravo	10	10	10	10	10	10	10	10	10	10	10	10	10	10	10	10	8	9	8	8	8	8	8	8	9	9	9	9	9	9	9	9	9	10	10	10	10

Houston Pilots Wind Report



Example

Sustained wind 13 Knots
Gusts 18 Knots
Wind from the N

WS: 13
G:18
N

Time Knots	Fri 4am	Fri 5am	Fri 6am	Fri 7am	Fri 8am	Fri 9am	Fri 10am	Fri 11am	Fri 12pm	Fri 1pm	Fri 2pm	Fri 3pm	Fri 4pm	Fri 5pm	Fri 6pm	Fri 7pm	Fri 8pm	Fri 9pm	Fri 10pm	Fri 11pm	Sat 12am	Sat 1am	Sat 2am	Sat 3am	Sat 4am	Sat 5am	Sat 6am	Sat 7am	Sat 8am	Sat 9am	Sat 10am	Sat 11am	Sat 12pm	Sat 1pm	Sat 2pm	Sat 3pm	
610 Bridge	0	0	0	2	3	3	5	5	5	6	6	6	10	10	9	12	12	13	13	14	13	12	12	12	12	12	12	12	12	12	12	12	12	12	13	13	12
	1	0	1	3	2	3	5	8	8	8	9	8	10	15	17	15	17	19	21	21	23	22	22	22	22	22	22	22	22	22	22	22	21	19	19	19	18
Kinder 1	0	0	0	2	2	3	3	5	5	5	5	5	6	10	10	9	12	12	13	13	14	13	12	12	12	12	12	12	11	12	13	12	13	12	13	13	12
	1	0	0	3	3	5	7	8	8	8	8	8	10	15	16	14	17	19	21	22	23	22	22	22	22	22	22	22	22	20	19	19	19	19	19	19	18
Greens Bayou	1	1	0	2	2	3	3	4	4	4	5	5	7	9	10	9	12	12	13	13	14	13	13	12	12	12	12	12	12	13	13	13	13	13	13	12	
	1	1	1	3	3	5	7	8	7	8	9	8	10	16	16	14	17	19	20	21	22	22	21	22	22	21	21	22	22	20	19	19	18	19	19	18	
Shell Crude	1	1	1	2	2	3	3	4	4	4	6	6	8	9	9	11	12	13	13	14	13	13	13	12	12	12	12	13	13	13	13	13	13	14	13	13	
	2	1	1	3	3	5	7	7	7	8	9	9	12	16	15	13	17	19	20	22	23	23	22	22	22	21	21	22	22	21	19	18	19	18	18	18	
Lynchburg Ferries	2	1	1	1	2	3	4	4	4	4	7	8	9	8	9	9	11	12	13	14	14	14	13	13	12	13	12	12	13	13	13	13	13	14	14	13	
	2	2	2	4	4	5	7	7	7	8	10	11	13	16	15	13	17	18	20	21	23	23	22	22	22	21	22	22	22	21	19	19	18	18	18	18	
Exxon 3	2	2	2	1	1	3	4	5	5	6	8	9	9	8	9	8	11	13	14	14	15	14	13	14	13	13	13	13	13	14	14	14	13	14	14	13	
	2	3	4	4	5	7	7	8	8	11	13	14	18	15	13	16	18	20	22	23	23	22	22	23	22	23	22	22	21	20	19	18	19	18	18	18	
Morgans Point	2	2	2	2	2	3	4	4	5	7	9	11	9	9	8	11	13	14	15	16	16	15	15	14	14	14	14	14	15	14	14	14	14	14	14		
	2	2	4	4	5	7	8	8	10	13	15	15	17	15	13	16	20	21	23	24	24	23	23	24	23	23	23	22	21	20	19	19	19	18	18	18	
75/76	1	2	3	3	3	4	3	3	6	9	11	12	8	9	8	9	12	15	16	17	18	18	17	17	17	16	16	16	16	16	15	15	15	15	14	15	
	1	2	4	4	5	6	7	8	9	12	14	16	14	16	13	13	17	21	22	24	25	25	24	24	24	23	23	23	21	20	20	19	19	19	18	18	
63/64	1	2	3	4	3	4	4	6	9	11	12	6	9	6	9	12	16	17	18	19	19	19	19	19	19	18	18	18	17	17	17	17	17	16	16	15	15
	1	2	3	5	5	7	7	8	9	12	14	15	13	15	11	13	17	21	22	24	25	25	25	25	25	24	24	24	23	22	21	20	20	20	19	19	19
51/52	1	2	3	5	4	4	3	4	6	8	10	11	6	9	6	9	12	16	18	19	20	20	20	20	19	19	19	19	18	18	17	17	17	16	16	16	16
	1	2	3	6	6	7	7	8	9	11	13	14	12	14	9	13	17	21	23	25	26	26	25	26	25	25	24	24	24	23	22	21	20	20	20	19	19
37/38	1	2	3	5	4	3	4	6	8	9	10	8	6	9	12	16	18	20	21	21	21	20	20	20	19	19	19	19	19	19	18	17	17	17	17	16	16
	2	2	3	5	6	7	6	8	9	10	11	12	13	12	9	13	16	20	23	25	27	26	26	26	26	25	24	25	24	23	23	22	21	20	20	19	19
25/26	1	2	3	5	4	4	4	5	6	7	8	9	9	5	5	8	12	15	17	20	22	22	21	21	21	20	20	20	20	19	18	18	17	17	17	17	17
	4	2	3	5	5	6	6	8	9	9	10	11	14	10	10	12	15	19	23	25	27	27	27	27	26	25	25	25	25	24	23	22	21	21	21	20	20
11/12	2	2	3	4	4	5	4	5	6	6	7	9	8	4	5	8	11	15	17	20	23	22	22	21	21	21	20	20	20	19	18	18	17	17	17	17	17
	4	3	3	4	5	6	6	8	9	9	9	11	13	9	10	12	15	19	24	26	28	28	27	27	26	26	25	25	24	23	22	22	21	21	21	20	20
1 & 2 Bravo	3	1	2	3	5	5	5	5	5	6	7	9	8	5	7	10	12	15	19	21	23	23	22	22	21	21	21	21	21	21	20	19	19	18	18	18	17
	5	4	3	3	5	5	5	6	8	9	9	10	12	10	11	13	15	19	23	26	28	28	27	27	27	26	26	25	25	24	24	23	22	21	21	20	20

See slides below for official thoughts on winds.

Houston Pilots: Fri. 11/11/2022



Forecast Discussion

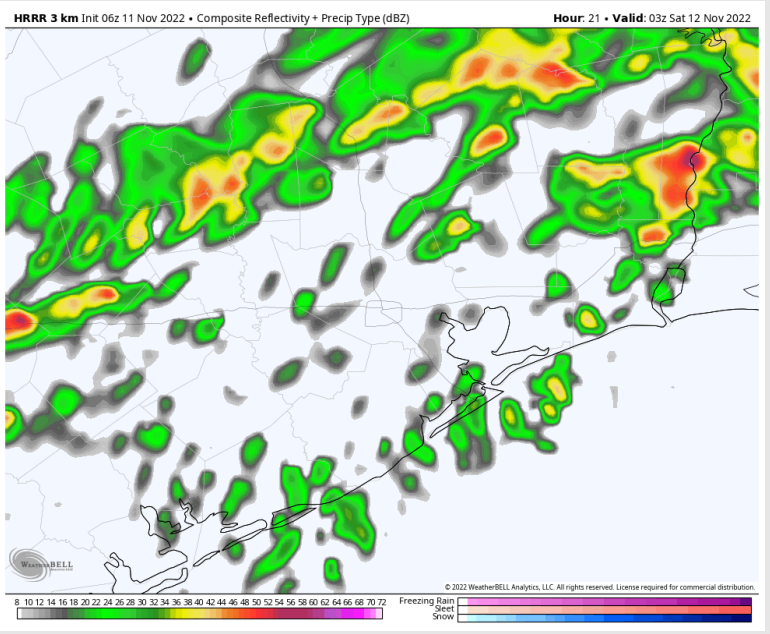
Precip: Anticipating dry conditions throughout the AM hours today. Around 2 - 4 AM, scattered/widespread showers and storms will begin to move into the area and continue through the rest of the night. Expecting lightning and locally heavy downpours.

Wind: Variable winds with a southerly orientation favored throughout the day at 1 - 6 kts across all stations. Beginning at 9 AM, sustained winds will gradually begin to increase to 4- 8 kts, then 12- 17 kts by 3 PM. Winds will begin to shift from the NW after 6 PM and increase to 17 - 26 kts , with stations N. of Morgan's Point less at 10- 13 kts. Wind gusts of 30+ kts possible for all stations after sundown.

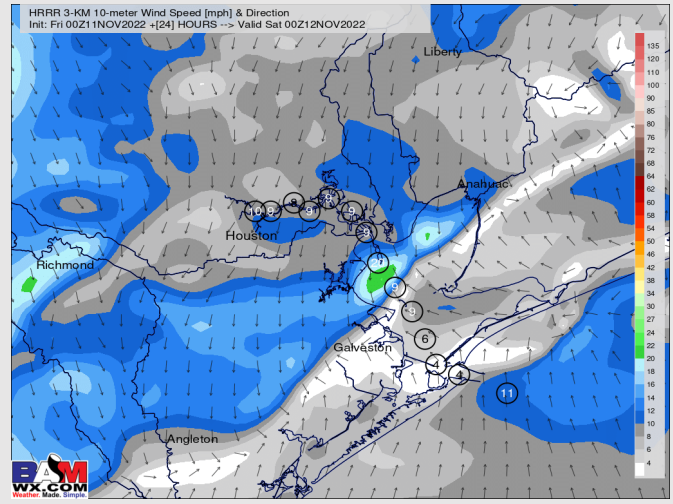
Temps: High temperatures will be in the mid to upper 70s/near 80 F across all stations on today.

Visibility: Anticipating patchy/dense fog to continue until 9 AM for stations N of Morgan's Point. This fog continues to pose the risk for reduced visibility of 0.5.

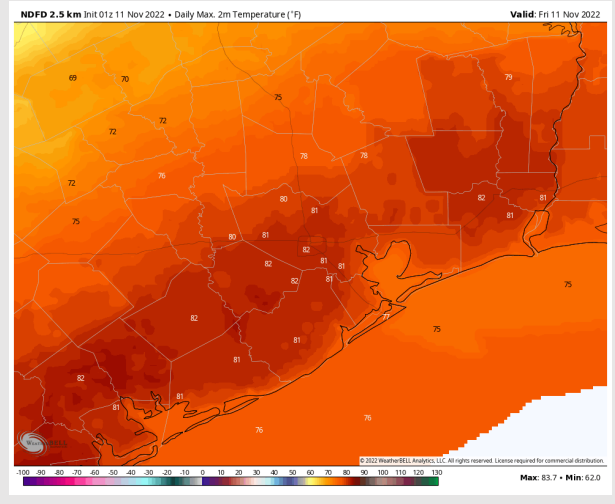
Precip Forecast: 9 PM CT



Wind Speed
6 PM CT



High Temps
Friday



Houston Pilots: sat. 11/12/2022



Forecast Discussion

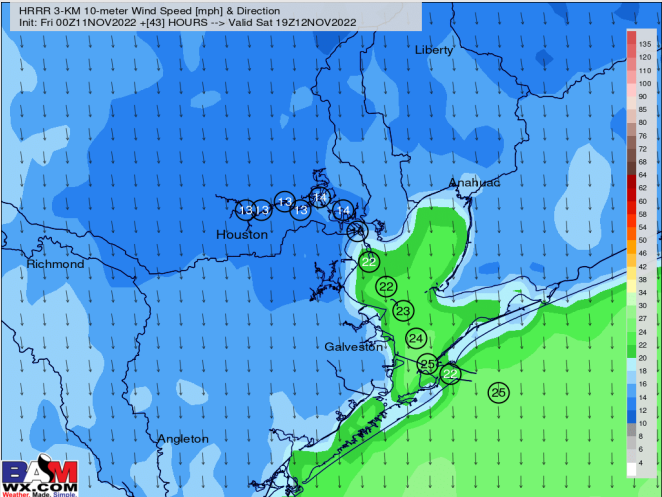
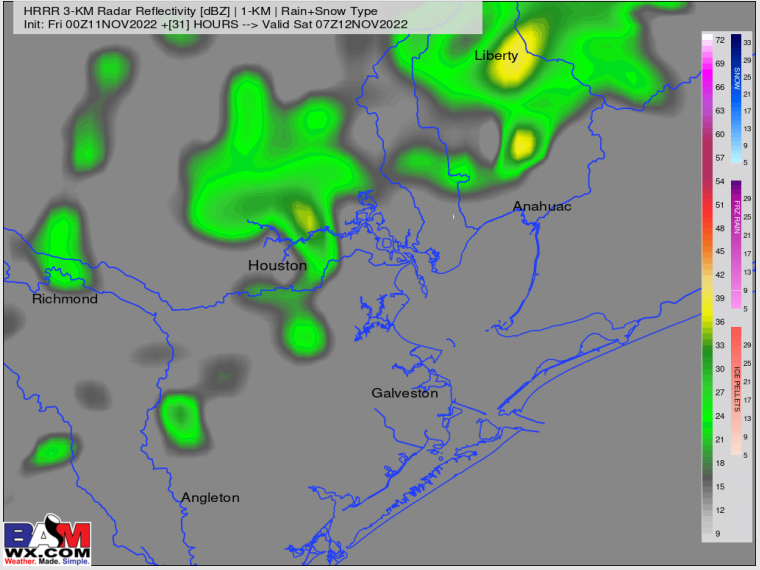
Precip: Anticipating shower chances to continue through 3-4 AM on Saturday morning. After 3-4 AM, expecting dry conditions the rest of the day.

Wind: Winds generally out of the NNW throughout majority of the day. Sustained winds for stations north of Morgan's Point at 10-15 kts and stations south of Morgan's Point at 17-23 kts. Around 8 PM, winds will begin to veer from the NE. Winds gusts of 30+ kts possible all day Saturday.

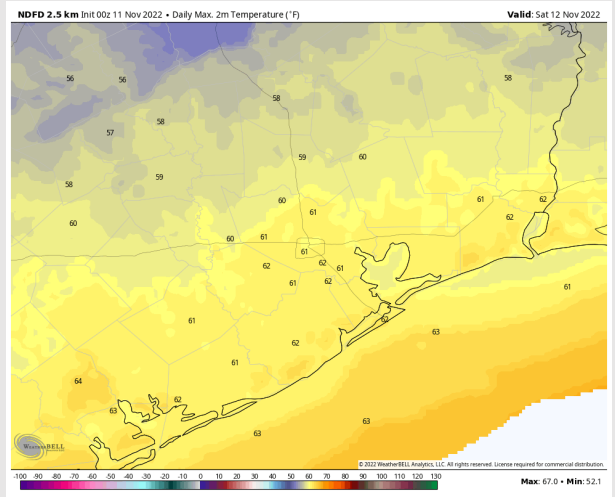
Temps: High temperatures Saturday in the low/mid 60s F for all stations.

Visibility: Not anticipating visibility concerns at this moment.

Precip Forecast: 1 AM CT



Wind Speed
1 PM CT



High Temps
Saturday

Houston Pilots: Sun. 11/13/2022



Forecast Discussion

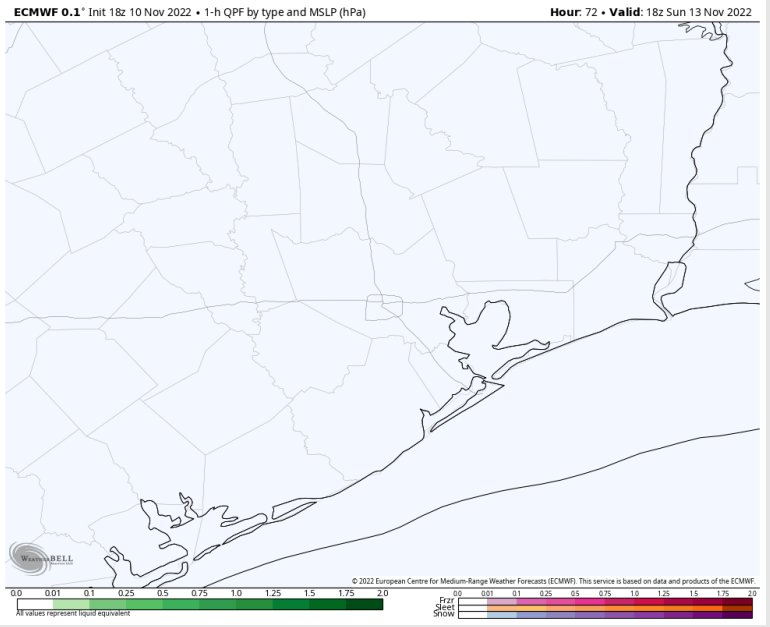
Precip: Anticipating dry conditions throughout the day Sunday.

Wind: Sustained winds out of the NE Sunday AM. Winds N of Morgan's Point at 8-13 kts, while winds S of Morgan's Point at 13-18 kts until 11 AM. After 11 AM winds begin to shift out of the E, winds N of Morgan's Point decrease to 3-7 kts and winds S of Morgan's Point decrease to 7-12 kts for the rest of the evening.

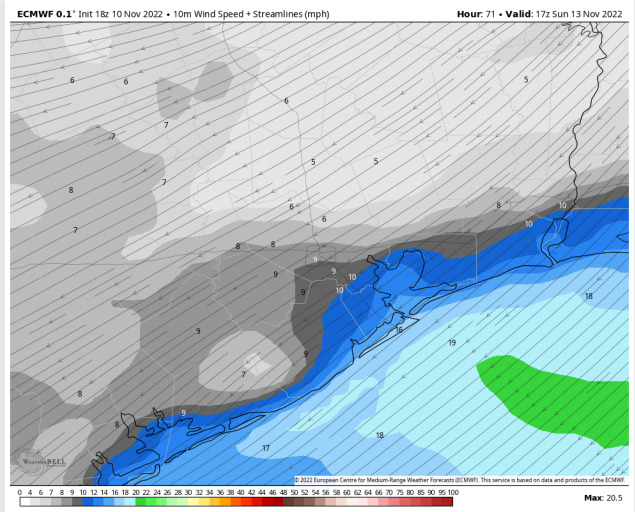
Temps: High temps Sunday in the low 60s for all stations.

Visibility: No concerns for reduced visibility at this time.

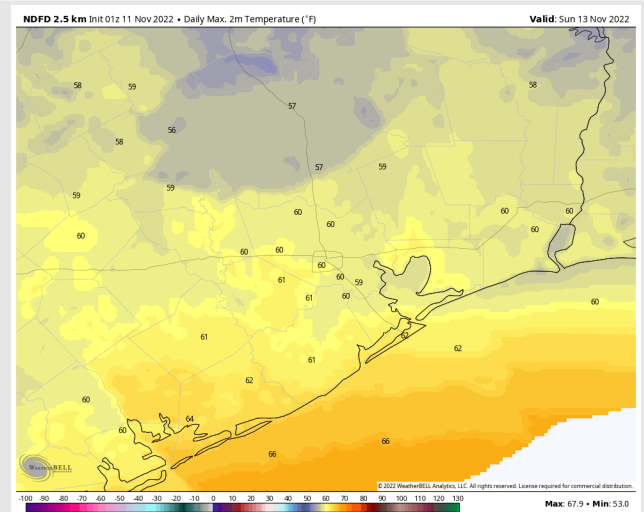
Precip Forecast: 12 PM CT



Wind Speed
11 AM CT



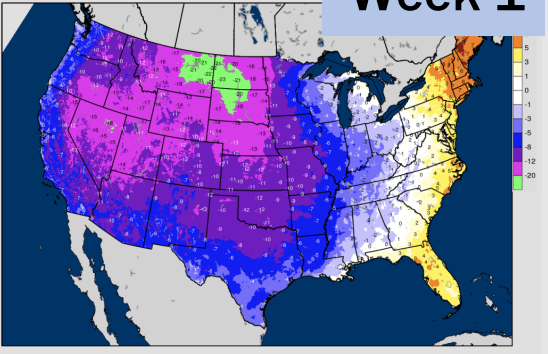
Low Temps
FRI AM



Houston Pilots: 11/11/22

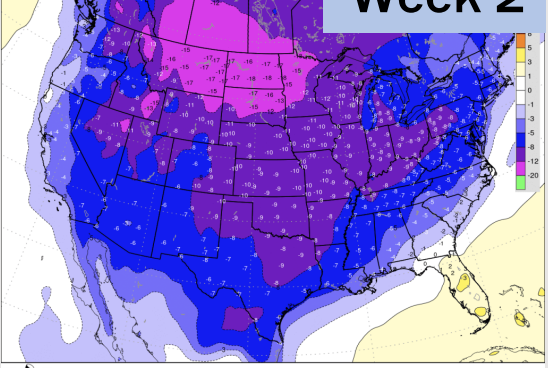
BAMcast Average Temperature Anomaly (°F)
7-DAY AVG for Thu 10NOV2022 thru Wed 16NOV2022 Days 1 to 7

Week 1

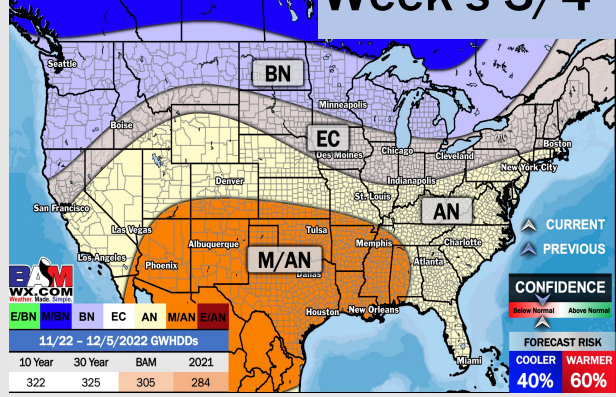


BAM EPS-GEFS 7-Day Average |2-meter Temperature Anomaly (°F)
Init: Thu 00Z10NOV2022 +[336] HOURS -> Valid Thu 00Z24NOV2022

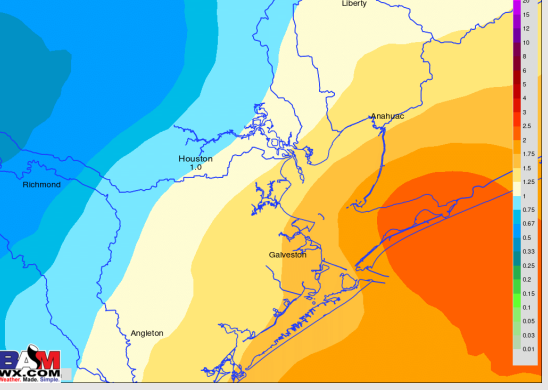
Week 2



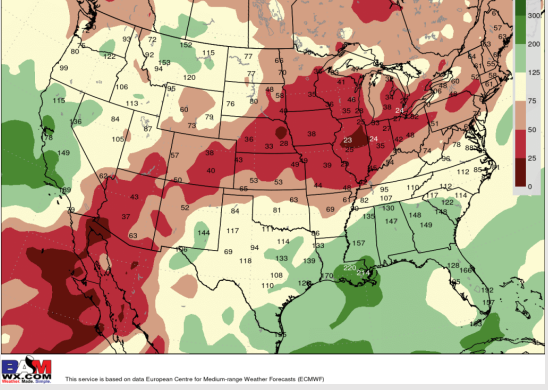
UPDATED: 11/8/22 WEEK'S **Week's 3/4**



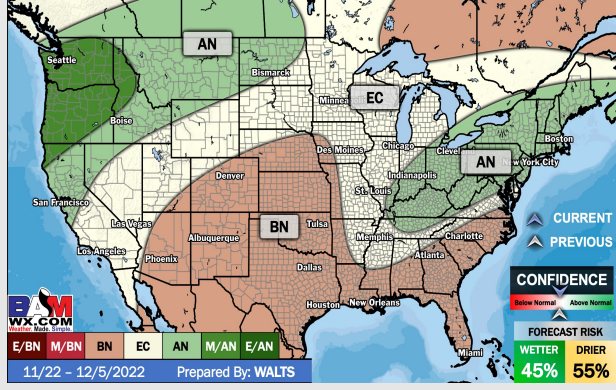
NWS WPC Total Precipitation [inches]
Accum thru Thu 12Z17NOV2022 +[168] hours Init: 12Z10NOV2022



ECMWF EPS 7-Day Precipitation [% of Normal] | Ensemble Mean
Init: Thu 00Z10NOV2022 +[336] HOURS -> Valid Thu 00Z24NOV2022



UPDATED: 11/8/22 WEEK'S 3/4 PRECIP DEPARTURE



- Temperatures expected to be below normal this week. Better chances for precipitation arrive Friday afternoon into Saturday morning.
- Week 2 to feature below normal temperatures and above normal precipitation.
- The weeks 3/4 timeframe looks to feature above normal temperatures and slightly below normal risks for precipitation.