

# Houston Pilots Forecast Package

Houston Pilots



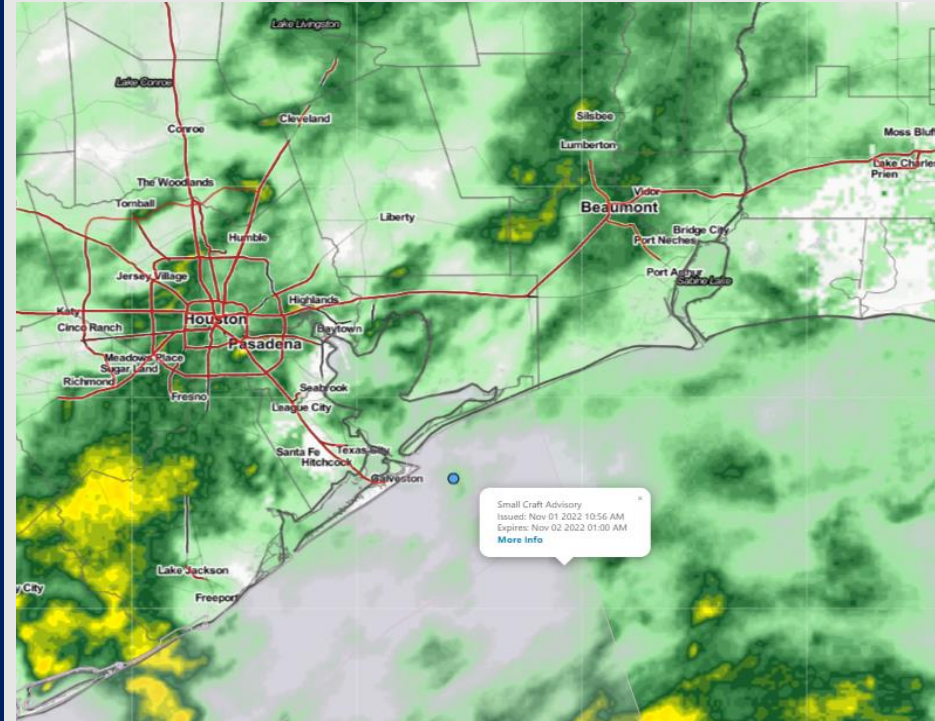
Updated: 1:00 PM CT

Tuesday, November 1, 2022

Forecaster: Will Danby

## Weather Headlines

- Expecting light rain this afternoon with a persistent low chance for showers over the new few days
- No direct tropical activity is favored in SE TX over the next 7-10 days
- Some wind gusts up to 25 kts possible this evening. See additional slides for more details
- Not anticipating any visibility concerns at this time

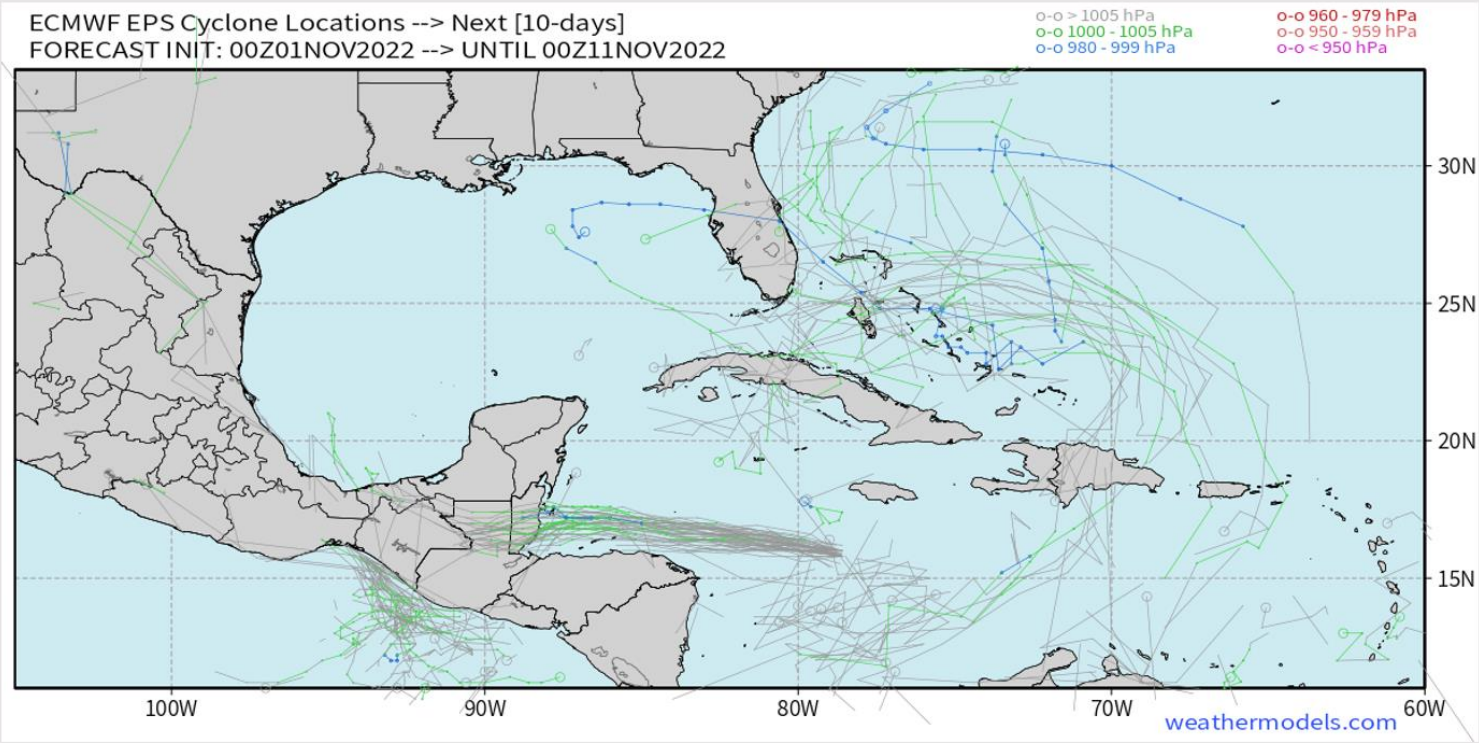


Radar/ NWS Alerts: 1:00 PM CT



As always, please do not hesitate to reach out to us with any forecast questions via the chat option on the Weather Porthole or our on-call number, **(317)-560-8122** press 1 for forecast questions.

## European Data Tracks Next 10 Days



**There are no tropical threats anticipated for SE TX over the next 7-10 days.**

### Confidence



Above Normal      Below Normal

# Houston Pilots Visibility Report



Time	11-01-2022 Tue 12pm	11-01-2022 Tue 1pm	11-01-2022 Tue 2pm	11-01-2022 Tue 3pm	11-01-2022 Tue 4pm	11-01-2022 Tue 5pm	11-01-2022 Tue 6pm	11-01-2022 Tue 7pm	11-01-2022 Tue 8pm	11-01-2022 Tue 9pm	11-01-2022 Tue 10pm	11-01-2022 Tue 11pm	11-02-2022 Wed 12am	11-02-2022 Wed 1am	11-02-2022 Wed 2am	11-02-2022 Wed 3am	11-02-2022 Wed 4am	11-02-2022 Wed 5am	11-02-2022 Wed 6am	11-02-2022 Wed 7am	11-02-2022 Wed 8am	11-02-2022 Wed 9am	11-02-2022 Wed 10am	11-02-2022 Wed 11am	11-02-2022 Wed 12pm	11-02-2022 Wed 1pm	11-02-2022 Wed 2pm	11-02-2022 Wed 3pm	11-02-2022 Wed 4pm	11-02-2022 Wed 5pm	11-02-2022 Wed 6pm	11-02-2022 Wed 7pm	11-02-2022 Wed 8pm	11-02-2022 Wed 9pm	11-02-2022 Wed 10pm	11-02-2022 Wed 11pm		
Houston Pilots N - 610 Bridge	9.038	10.000	10.000	10.000	10.000	10.000	10.000	10.000	10.000	10.000	10.000	10.000	10.000	10.000	10.000	9.772	7.954	7.919	8.988	8.988	6.964	9.033	10.000	10.000	10.000	10.000	10.000	10.000	10.000	10.000	10.000	10.000	10.000	10.000	10.000	10.000	10.000	10.000
Houston Pilots M - Kinder 1	9.038	10.000	10.000	10.000	10.000	10.000	10.000	10.000	10.000	10.000	10.000	10.000	10.000	10.000	10.000	9.769	7.954	7.919	8.862	8.988	7.462	9.033	10.000	10.000	10.000	10.000	10.000	10.000	10.000	10.000	10.000	10.000	10.000	10.000	10.000	10.000	10.000	10.000
Houston Pilots L - Greens Bayou	9.773	10.000	10.000	10.000	10.000	10.000	10.000	10.000	10.000	10.000	10.000	10.000	10.000	10.000	10.000	10.000	8.133	8.146	8.502	8.560	8.133	9.768	10.000	10.000	10.000	10.000	10.000	10.000	10.000	10.000	10.000	10.000	10.000	10.000	10.000	10.000	10.000	10.000
Houston Pilots K - Shell Crude	9.038	10.000	10.000	10.000	10.000	9.530	10.000	10.000	10.000	10.000	10.000	10.000	10.000	10.000	9.820	9.122	8.988	9.033	8.988	8.988	8.988	10.000	10.000	10.000	10.000	10.000	10.000	10.000	10.000	10.000	10.000	10.000	10.000	10.000	10.000	10.000	10.000	10.000
Houston Pilots J - Lynchburg Ferries	9.768	10.000	9.910	10.000	10.000	10.000	10.000	10.000	10.000	10.000	10.000	10.000	10.000	10.000	9.875	9.230	8.988	9.033	8.988	8.988	8.988	10.000	10.000	10.000	10.000	10.000	10.000	10.000	10.000	10.000	10.000	10.000	10.000	10.000	10.000	10.000	10.000	10.000
Houston Pilots I - Exxon 3	8.691	9.916	8.911	10.000	10.000	10.000	10.000	9.382	10.000	10.000	10.000	10.000	10.000	10.000	8.988	8.320	8.988	9.033	8.988	8.988	8.988	10.000	10.000	10.000	10.000	10.000	10.000	10.000	10.000	10.000	10.000	10.000	10.000	10.000	10.000	10.000	10.000	10.000
Houston Pilots H - Morgans Point	7.421	9.038	7.924	10.000	10.000	10.000	9.038	8.988	9.465	10.000	10.000	10.000	10.000	8.988	8.635	7.954	8.988	9.033	8.988	8.988	8.988	10.000	10.000	10.000	10.000	10.000	10.000	10.000	10.000	10.000	10.000	10.000	10.000	10.000	10.000	10.000	10.000	10.000
Houston Pilots G - 75/76	6.929	7.813	7.924	10.000	10.000	9.676	9.038	8.988	8.988	10.000	10.000	10.000	8.988	8.988	7.954	7.954	8.988	9.033	8.988	10.000	9.574	10.000	10.000	10.000	10.000	10.000	10.000	10.000	10.000	10.000	10.000	10.000	10.000	10.000	10.000	10.000	10.000	10.000
Houston Pilots F - 63/64	6.929	5.975	7.924	10.000	10.000	9.038	9.038	8.988	8.988	10.000	10.000	9.643	8.988	8.988	7.954	7.954	10.000	9.033	10.000	10.000	9.574	10.000	10.000	10.000	10.000	10.000	10.000	10.000	10.000	10.000	10.000	10.000	10.000	10.000	10.000	10.000	10.000	10.000
Houston Pilots E - 51/52	6.890	5.936	8.434	10.000	10.000	9.038	9.038	8.988	8.988	10.000	10.000	10.000	9.667	10.000	7.954	7.954	10.000	10.000	10.000	10.000	9.865	10.000	10.000	10.000	10.000	10.000	10.000	10.000	10.000	10.000	10.000	10.000	10.000	10.000	10.000	10.000	8.999	9.248
Houston Pilots D - 37/38	6.890	5.936	8.434	10.000	10.000	9.038	9.038	8.988	8.988	10.000	10.000	10.000	10.000	10.000	7.954	7.954	10.000	10.000	10.000	10.000	9.871	9.853	10.000	10.000	10.000	10.000	10.000	10.000	10.000	10.000	10.000	10.000	10.000	10.000	10.000	10.000	8.999	8.999
Houston Pilots C - 25/26	6.890	6.481	7.924	10.000	10.000	8.447	9.038	10.000	10.000	10.000	10.000	10.000	10.000	10.000	7.954	7.954	10.000	10.000	10.000	10.000	9.871	9.853	10.000	10.000	10.000	10.000	10.000	10.000	10.000	10.000	10.000	10.000	10.000	10.000	10.000	10.000	8.999	8.999
Houston Pilots B - 11/12	6.890	6.481	7.924	10.000	10.000	8.447	9.038	10.000	10.000	10.000	10.000	10.000	10.000	10.000	7.954	7.954	10.000	10.000	10.000	10.000	10.000	10.000	10.000	10.000	10.000	10.000	10.000	10.000	10.000	10.000	10.000	10.000	10.000	10.000	10.000	9.080	8.999	8.999
Houston Pilots A - 1 & 2 Bravo	6.890	6.371	6.890	8.956	7.982	7.924	9.038	10.000	10.000	8.988	7.954	6.920	7.954	7.954	7.954	7.954	10.000	10.000	10.000	10.000	9.822	9.808	9.808	9.808	9.808	10.000	10.000	10.000	10.000	10.000	10.000	10.000	10.000	9.833	9.833	9.033	8.999	8.999

# Houston Pilots Wind Report



Time Knots	11-01-2022 Tue 12pm	11-01-2022 Tue 1pm	11-01-2022 Tue 2pm	11-01-2022 Tue 3pm	11-01-2022 Tue 4pm	11-01-2022 Tue 5pm	11-01-2022 Tue 6pm	11-01-2022 Tue 7pm	11-01-2022 Tue 8pm	11-01-2022 Tue 9pm	11-01-2022 Tue 10pm	11-01-2022 Tue 11pm	11-02-2022 Wed 12am	11-02-2022 Wed 1am	11-02-2022 Wed 2am	11-02-2022 Wed 3am	11-02-2022 Wed 4am	11-02-2022 Wed 5am	11-02-2022 Wed 6am	11-02-2022 Wed 7am	11-02-2022 Wed 8am	11-02-2022 Wed 9am	11-02-2022 Wed 10am	11-02-2022 Wed 11am	11-02-2022 Wed 12pm	11-02-2022 Wed 1pm	11-02-2022 Wed 2pm	11-02-2022 Wed 3pm	11-02-2022 Wed 4pm	11-02-2022 Wed 5pm	11-02-2022 Wed 6pm	11-02-2022 Wed 7pm	11-02-2022 Wed 8pm	11-02-2022 Wed 9pm	11-02-2022 Wed 10pm	11-02-2022 Wed 11pm
Houston Pilots N - 610 Bridge	WS: 4 G:9 SE	WS: 5 G:10 SE	WS: 3 G:5 SW	WS: 3 G:4 WNW	WS: 3 G:4 ENE	WS: 7 G:12 ESE	WS: 10 G:19 ESE	WS: 8 G:19 SE	WS: 9 G:21 SE	WS: 6 G:20 ESE	WS: 3 G:13 NE	WS: 4 G:11 NE	WS: 4 G:11 NE	WS: 2 G:8 ESE	WS: 4 G:11 NE	WS: 3 G:7 NE	WS: 4 G:8 NE	WS: 4 G:8 NE	WS: 5 G:9 NE	WS: 5 G:10 NE	WS: 5 G:9 NE	WS: 5 G:10 NE	WS: 6 G:10 ENE	WS: 6 G:10 ENE	WS: 6 G:10 E	WS: 7 G:11 E	WS: 7 G:11 E	WS: 7 G:11 E	WS: 7 G:12 ESE	WS: 7 G:11 ESE	WS: 7 G:12 ESE	WS: 6 G:11 ESE	WS: 5 G:10 E	WS: 5 G:9 E	WS: 4 G:9 ESE	WS: 3 G:8 ESE
Houston Pilots M - Kinder 1	WS: 4 G:9 SE	WS: 5 G:10 SE	WS: 3 G:5 SSW	WS: 3 G:4 WSW	WS: 2 G:4 ENE	WS: 6 G:10 ESE	WS: 10 G:18 ESE	WS: 8 G:19 SE	WS: 9 G:21 SE	WS: 6 G:21 E	WS: 3 G:13 NE	WS: 4 G:10 NE	WS: 3 G:10 NE	WS: 3 G:8 ENE	WS: 4 G:11 NE	WS: 3 G:7 NE	WS: 4 G:8 NE	WS: 4 G:8 NE	WS: 5 G:9 NE	WS: 5 G:10 NE	WS: 5 G:9 NE	WS: 5 G:10 NE	WS: 6 G:10 ENE	WS: 6 G:10 ENE	WS: 6 G:10 E	WS: 7 G:10 E	WS: 7 G:10 E	WS: 7 G:11 ESE	WS: 7 G:12 ESE	WS: 7 G:11 ESE	WS: 6 G:10 ESE	WS: 5 G:10 E	WS: 5 G:9 E	WS: 4 G:9 ESE	WS: 3 G:7 ESE	
Houston Pilots L - Greens Bayou	WS: 3 G:9 SE	WS: 5 G:11 SE	WS: 3 G:6 SSW	WS: 3 G:5 E	WS: 3 G:4 ENE	WS: 6 G:10 ESE	WS: 9 G:16 SE	WS: 8 G:19 SE	WS: 9 G:21 SE	WS: 6 G:21 NE	WS: 3 G:14 NE	WS: 3 G:9 ESE	WS: 3 G:9 ESE	WS: 3 G:9 NE	WS: 5 G:10 NE	WS: 3 G:7 NE	WS: 4 G:8 NE	WS: 4 G:8 NE	WS: 5 G:9 NE	WS: 5 G:10 NE	WS: 5 G:9 NE	WS: 5 G:10 NE	WS: 6 G:10 ENE	WS: 6 G:10 ENE	WS: 6 G:10 E	WS: 7 G:10 E	WS: 7 G:10 E	WS: 7 G:11 ESE	WS: 7 G:12 ESE	WS: 7 G:11 ESE	WS: 6 G:10 ESE	WS: 5 G:9 ESE	WS: 4 G:8 E	WS: 4 G:8 E	WS: 3 G:7 ESE	
Houston Pilots K - Shell Crude	WS: 4 G:10 SE	WS: 6 G:11 SE	WS: 4 G:7 SSW	WS: 3 G:5 E	WS: 2 G:3 NE	WS: 5 G:8 ESE	WS: 8 G:14 SE	WS: 8 G:19 SE	WS: 10 G:21 SE	WS: 8 G:21 SE	WS: 4 G:14 ENE	WS: 3 G:8 SSW	WS: 2 G:8 NE	WS: 2 G:9 NE	WS: 3 G:10 NE	WS: 4 G:7 NE	WS: 3 G:8 NE	WS: 4 G:9 NE	WS: 5 G:10 NE	WS: 5 G:10 NE	WS: 5 G:10 NE	WS: 5 G:11 NE	WS: 6 G:11 ENE	WS: 7 G:10 ENE	WS: 7 G:10 E	WS: 7 G:10 E	WS: 7 G:11 ESE	WS: 8 G:11 ESE	WS: 7 G:11 ESE	WS: 7 G:11 ESE	WS: 6 G:10 ESE	WS: 5 G:9 ESE	WS: 4 G:9 E	WS: 4 G:8 ESE	WS: 4 G:7 ESE	
Houston Pilots J - Lynchburg Ferries	WS: 4 G:11 SE	WS: 7 G:13 SE	WS: 3 G:3 SSW	WS: 4 G:5 NNE	WS: 2 G:3 NE	WS: 4 G:7 ESE	WS: 7 G:13 SE	WS: 8 G:19 SE	WS: 10 G:21 SE	WS: 8 G:21 SE	WS: 5 G:15 ENE	WS: 3 G:9 SSW	WS: 3 G:9 NE	WS: 4 G:10 NE	WS: 4 G:10 NE	WS: 4 G:8 NE	WS: 4 G:8 NE	WS: 5 G:9 NE	WS: 5 G:10 NE	WS: 5 G:10 NE	WS: 5 G:11 NE	WS: 6 G:11 ENE	WS: 6 G:11 ENE	WS: 7 G:10 ENE	WS: 7 G:10 E	WS: 7 G:10 E	WS: 7 G:11 ESE	WS: 8 G:11 ESE	WS: 8 G:11 ESE	WS: 7 G:11 ESE	WS: 7 G:11 ESE	WS: 6 G:10 ESE	WS: 5 G:9 ESE	WS: 5 G:8 ESE	WS: 4 G:7 ESE	
Houston Pilots I - Exxon 3	WS: 6 G:14 SE	WS: 8 G:13 SE	WS: 4 G:9 S	WS: 4 G:5 NNE	WS: 2 G:3 E	WS: 3 G:6 E	WS: 6 G:11 ESE	WS: 9 G:18 ESE	WS: 11 G:22 SE	WS: 9 G:21 SE	WS: 5 G:15 ENE	WS: 3 G:9 ESE	WS: 3 G:8 NE	WS: 4 G:9 NE	WS: 3 G:9 NNE	WS: 4 G:8 NE	WS: 5 G:9 NE	WS: 6 G:10 NE	WS: 6 G:10 NE	WS: 6 G:11 NE	WS: 6 G:11 NE	WS: 7 G:11 ENE	WS: 7 G:11 ENE	WS: 7 G:11 ENE	WS: 7 G:11 ENE	WS: 7 G:11 E	WS: 7 G:10 ESE	WS: 8 G:11 ESE	WS: 8 G:11 ESE	WS: 8 G:11 ESE	WS: 6 G:10 ESE	WS: 5 G:10 ESE	WS: 5 G:9 ESE	WS: 4 G:8 ESE	WS: 4 G:8 ESE	
Houston Pilots H - Morgans Point	WS: 9 G:18 SE	WS: 8 G:12 SSE	WS: 5 G:10 SSE	WS: 4 G:5 NNE	WS: 2 G:3 ENE	WS: 3 G:6 ENE	WS: 6 G:10 ESE	WS: 11 G:18 ESE	WS: 13 G:20 ESE	WS: 11 G:20 ESE	WS: 9 G:17 ESE	WS: 5 G:11 ENE	WS: 5 G:10 ENE	WS: 6 G:11 ENE	WS: 5 G:9 NE	WS: 6 G:10 ENE	WS: 6 G:11 ENE	WS: 6 G:11 ENE	WS: 7 G:11 NE	WS: 7 G:11 NE	WS: 7 G:12 NE	WS: 8 G:12 ENE	WS: 8 G:12 ENE	WS: 8 G:12 ENE	WS: 8 G:12 ENE	WS: 8 G:12 E	WS: 8 G:11 ESE	WS: 8 G:11 ESE	WS: 8 G:11 ESE	WS: 7 G:11 ESE	WS: 7 G:11 ESE	WS: 6 G:10 ESE	WS: 6 G:10 ESE	WS: 6 G:10 ESE	WS: 5 G:9 ESE	
Houston Pilots G - 75/76	WS: 15 G:20 SE	WS: 9 G:13 SE	WS: 8 G:11 SSE	WS: 5 G:6 NNE	WS: 4 G:4 S	WS: 6 G:7 NNE	WS: 6 G:9 E	WS: 12 G:17 E	WS: 14 G:18 ESE	WS: 16 G:21 ESE	WS: 15 G:21 E	WS: 11 G:15 E	WS: 10 G:12 E	WS: 11 G:14 ENE	WS: 9 G:11 ENE	WS: 8 G:12 ENE	WS: 8 G:12 ENE	WS: 8 G:12 ENE	WS: 9 G:13 ENE	WS: 9 G:13 ENE	WS: 9 G:13 ENE	WS: 9 G:13 ENE	WS: 9 G:13 ENE	WS: 9 G:13 ENE	WS: 9 G:13 ENE	WS: 8 G:12 E	WS: 8 G:12 E	WS: 8 G:12 E	WS: 8 G:12 ESE	WS: 8 G:12 ESE	WS: 8 G:12 ESE	WS: 8 G:12 E	WS: 8 G:12 E	WS: 7 G:12 E	WS: 8 G:12 ESE	
Houston Pilots F - 63/64	WS: 16 G:20 SE	WS: 10 G:14 SE	WS: 8 G:11 SSE	WS: 6 G:6 NNE	WS: 7 G:7 WSW	WS: 8 G:9 NNE	WS: 10 G:13 ENE	WS: 14 G:18 ESE	WS: 14 G:18 ESE	WS: 18 G:25 E	WS: 15 G:21 E	WS: 13 G:19 ESE	WS: 14 G:19 ESE	WS: 14 G:14 ENE	WS: 10 G:13 ENE	WS: 9 G:13 ENE	WS: 9 G:13 ENE	WS: 10 G:13 ENE	WS: 10 G:13 ENE	WS: 10 G:14 ENE	WS: 10 G:14 ENE	WS: 10 G:14 ENE	WS: 10 G:14 ENE	WS: 10 G:14 ENE	WS: 10 G:14 ENE	WS: 9 G:13 E	WS: 9 G:13 E	WS: 9 G:13 E	WS: 9 G:13 ESE	WS: 9 G:13 ESE	WS: 9 G:13 E	WS: 9 G:13 E	WS: 8 G:13 E	WS: 8 G:13 ESE	WS: 8 G:13 ESE	
Houston Pilots E - 51/52	WS: 16 G:20 SE	WS: 10 G:15 SE	WS: 6 G:8 SSE	WS: 6 G:6 NE	WS: 10 G:10 NNW	WS: 9 G:11 N	WS: 8 G:10 NNE	WS: 9 G:12 NE	WS: 16 G:19 ESE	WS: 21 G:25 ESE	WS: 17 G:21 ESE	WS: 16 G:22 ESE	WS: 16 G:22 E	WS: 12 G:12 ENE	WS: 16 G:16 ENE	WS: 12 G:12 ENE	WS: 10 G:10 ENE	WS: 10 G:10 ENE	WS: 10 G:10 ENE	WS: 10 G:10 ENE	WS: 10 G:10 ENE	WS: 10 G:10 ENE	WS: 10 G:10 ENE	WS: 10 G:10 ENE	WS: 10 G:10 E	WS: 10 G:10 E	WS: 10 G:10 E	WS: 10 G:10 E	WS: 10 G:10 E	WS: 10 G:10 E	WS: 10 G:10 E	WS: 9 G:14 E	WS: 9 G:14 E	WS: 9 G:14 E	WS: 8 G:13 ESE	
Houston Pilots D - 37/38	WS: 16 G:19 ESE	WS: 11 G:15 SE	WS: 6 G:6 SSE	WS: 6 G:6 NNE	WS: 9 G:10 SSW	WS: 10 G:12 NNE	WS: 9 G:11 NNE	WS: 9 G:12 NE	WS: 15 G:18 E	WS: 20 G:23 ESE	WS: 23 G:30 ESE	WS: 21 G:28 ESE	WS: 17 G:25 ESE	WS: 16 G:23 E	WS: 12 G:12 E	WS: 10 G:10 ENE	WS: 10 G:10 ENE	WS: 10 G:10 ENE	WS: 10 G:10 ENE	WS: 10 G:10 ENE	WS: 10 G:10 ENE	WS: 10 G:10 ENE	WS: 10 G:10 ENE	WS: 10 G:10 ENE	WS: 10 G:10 ENE	WS: 11 G:15 E	WS: 11 G:15 E	WS: 11 G:15 E	WS: 11 G:15 E	WS: 10 G:14 E	WS: 10 G:14 E	WS: 10 G:14 E	WS: 9 G:14 E	WS: 9 G:14 E	WS: 9 G:14 E	
Houston Pilots C - 25/26	WS: 15 G:20 ESE	WS: 11 G:16 ESE	WS: 5 G:6 ENE	WS: 6 G:7 ENE	WS: 9 G:10 NE	WS: 10 G:12 SE	WS: 9 G:12 NE	WS: 9 G:13 NE	WS: 13 G:17 E	WS: 19 G:26 ESE	WS: 22 G:29 ESE	WS: 19 G:26 ESE	WS: 17 G:26 ESE	WS: 15 G:24 E	WS: 11 G:19 E	WS: 10 G:15 ENE	WS: 10 G:14 ENE	WS: 10 G:14 ENE	WS: 10 G:14 ENE	WS: 10 G:14 ENE	WS: 10 G:14 ENE	WS: 10 G:14 ENE	WS: 10 G:14 ENE	WS: 10 G:14 ENE	WS: 10 G:14 ENE	WS: 10 G:14 E	WS: 10 G:14 E	WS: 10 G:14 E	WS: 10 G:14 E	WS: 10 G:14 E	WS: 10 G:14 E	WS: 10 G:14 E	WS: 10 G:14 E	WS: 9 G:14 E	WS: 9 G:14 ESE	WS: 9 G:14 ESE
Houston Pilots B - 11/12	WS: 16 G:20 ESE	WS: 12 G:16 ESE	WS: 7 G:8 SE	WS: 7 G:7 ENE	WS: 8 G:10 NNE	WS: 9 G:12 ENE	WS: 9 G:11 ENE	WS: 10 G:14 ENE	WS: 11 G:14 E	WS: 19 G:23 E	WS: 18 G:23 E	WS: 16 G:25 E	WS: 14 G:24 E	WS: 14 G:15 E	WS: 11 G:15 ENE	WS: 10 G:14 ENE	WS: 10 G:14 ENE	WS: 10 G:14 ENE	WS: 10 G:14 ENE	WS: 10 G:14 ENE	WS: 10 G:14 ENE	WS: 10 G:14 ENE	WS: 10 G:14 ENE	WS: 10 G:14 ENE	WS: 10 G:14 ENE	WS: 10 G:14 E	WS: 10 G:14 E	WS: 10 G:14 E	WS: 10 G:14 E	WS: 10 G:14 E	WS: 10 G:14 E	WS: 10 G:14 E	WS: 10 G:14 E	WS: 10 G:14 E	WS: 10 G:14 E	
Houston Pilots A - 1 & 2 Bravo	WS: 14 G:18 ESE	WS: 17 G:18 ESE	WS: 8 G:10 SE	WS: 6 G:6 NE	WS: 10 G:10 NNE	WS: 12 G:13 NNE	WS: 11 G:12 NE	WS: 15 G:16 E	WS: 14 G:19 E	WS: 15 G:14 ENE	WS: 17 G:21 ENE	WS: 14 G:19 ENE	WS: 14 G:23 E	WS: 18 G:23 E	WS: 13 G:16 E	WS: 13 G:16 ENE	WS: 12 G:15 ENE	WS: 12 G:15 ENE	WS: 12 G:15 ENE	WS: 12 G:15 ENE	WS: 12 G:15 ENE	WS: 12 G:15 ENE	WS: 12 G:15 ENE	WS: 12 G:15 ENE	WS: 12 G:15 ENE	WS: 12 G:15 E	WS: 12 G:15 E	WS: 12 G:15 E	WS: 12 G:15 E	WS: 12 G:15 E	WS: 12 G:15 E	WS: 12 G:15 E	WS: 12 G:15 E	WS: 11 G:16 E	WS: 11 G:16 E	WS: 11 G:16 ESE

See slides below for official thoughts on winds.

# Houston Pilots: Tue. 11/1/2022



## Forecast Discussion

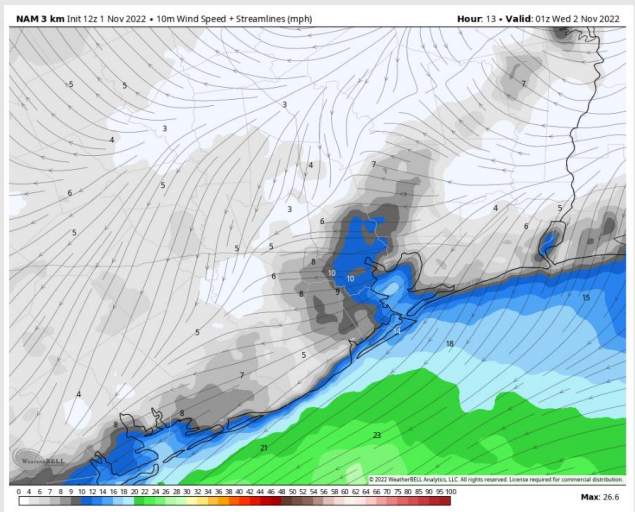
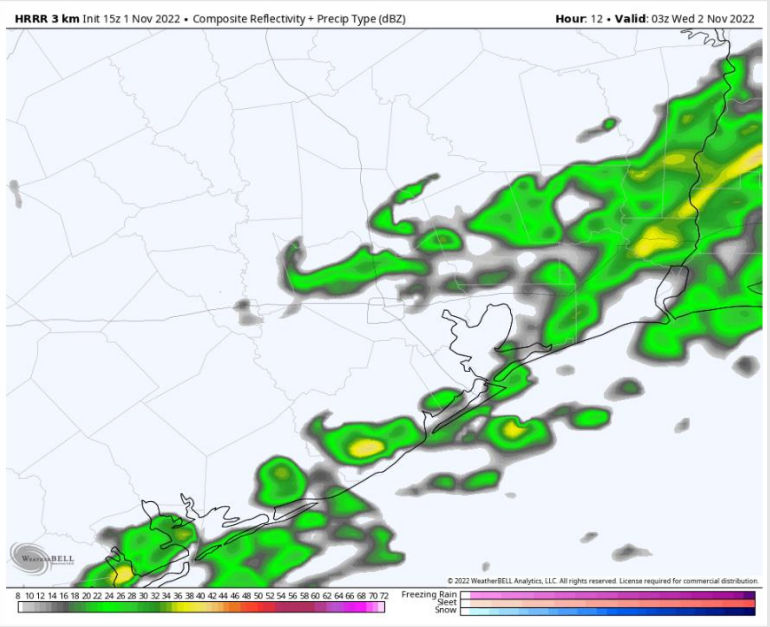
**Precip:** Anticipating widespread showers/t-storms to continue for this afternoon then transitioning to spotty showers around 9 PM. Locally heavy downpours and sporadic lightning possible under strongest cells. Scattered showers will remain in the area until 11 PM. Post 12 AM, showers will dissipate further, but chances remain low at 20% across all stations through the overnight.

**Wind:** Sustained winds ranging from NE to E throughout the afternoon and overnight. Winds N of Morgan's Point will be 8 - 12 kts in the evening, then subside to 1 - 5 kts after 10 PM. S of Morgan's point to station 11/12, winds will start at 11 - 16 kts, then subside to 2 - 6 kts by 12 AM. Boarding Station winds will remain at 13 - 17 kts throughout the evening/overnight. Gusts of 18 - 22 kts are possible across all stations.

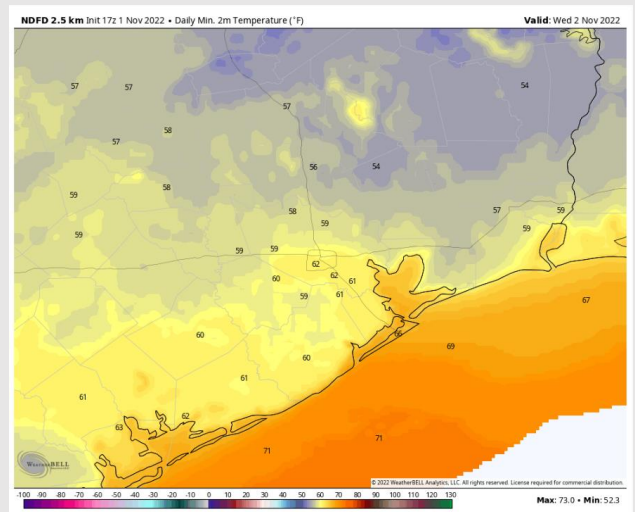
**Temps:** Low temps Wednesday morning will be in the upper 60s F S of Morgan's Point and lower 60s F N of Morgan's Point.

**Visibility:** Not anticipating any visibility concerns for the overnight.

## Precip Forecast: 10 PM CT



Wind Speed  
8 PM CT



Low Temps  
Weds AM

# Houston Pilots: Wed. 11/2/2022



## Forecast Discussion

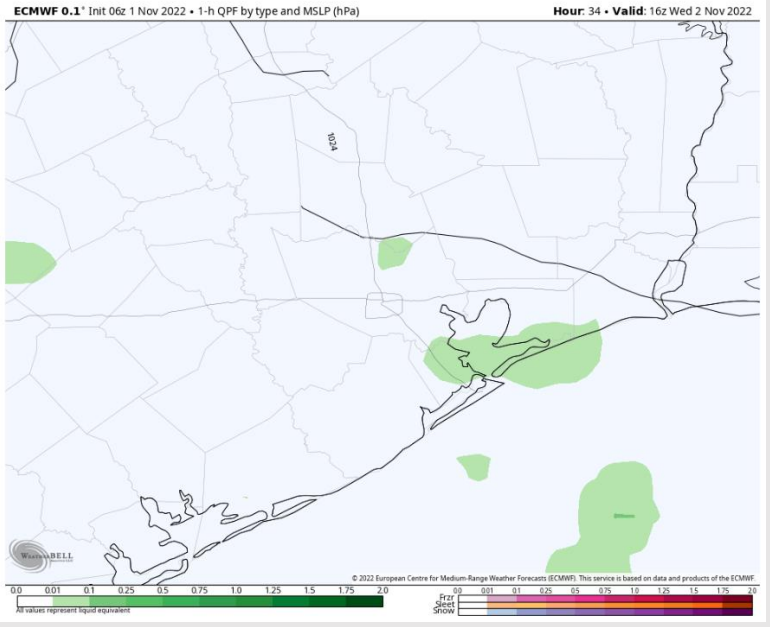
**Precip:** Favoring mostly dry conditions Wednesday with a 10% chance for isolated showers/storms possible after 1PM.

**Wind:** Sustained winds out of the NE Wednesday AM at 11 - 16 kts for stations S of Morgan's Point and 6 - 11 kts for stations N of Morgan's Point. By 2 PM, winds will begin to veer out of the E, and remain as such for the rest of the day.

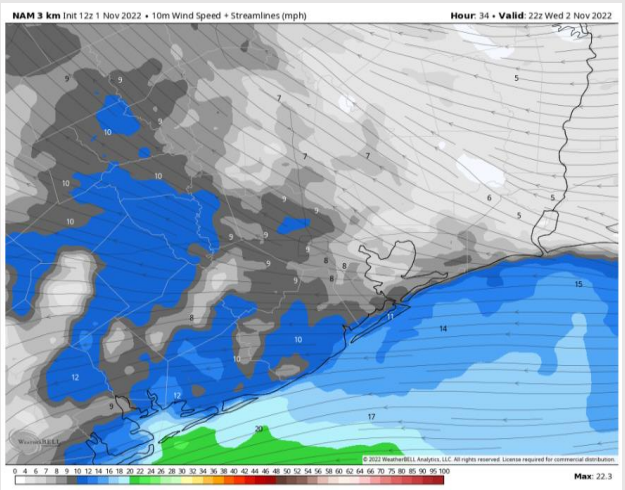
**Temps:** High temps Wednesday in the low 70s F at the boarding station and in the mid 70s F at all other stations.

**Visibility:** Not favoring any concerns for reduced visibility.

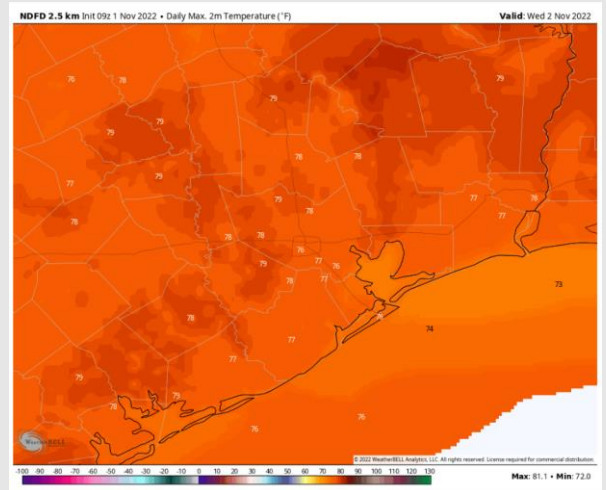
## Precip Forecast: 12 PM CT



Wind Speed  
5 PM CT



High Temps  
Wednesday



# Houston Pilots: Thurs. 11/3/2022



## Forecast Discussion

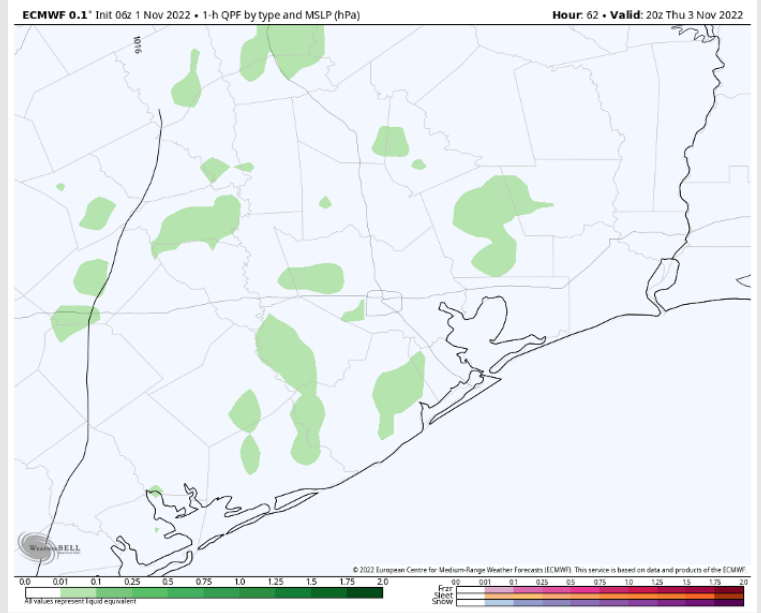
**Precip:** Favoring dry conditions early Thursday AM. Anticipating a 20% chance for isolated showers starting at 11 AM lasting until 5 PM. After 5 PM favoring dry conditions for the rest of the day.

**Wind:** Winds out of the ESE throughout the day Thursday. Winds at 5-10 kts for all stations Thursday AM. Around 12 PM, winds gradually increase to 10-16 kts by midnight for all stations.

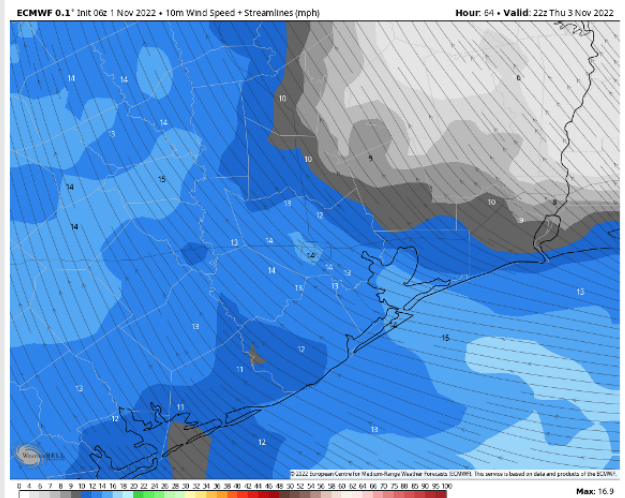
**Temps:** High temps Thursday will be in the mid - upper 70s F at all stations.

**Visibility:** Not anticipating any visibility concerns at this time.

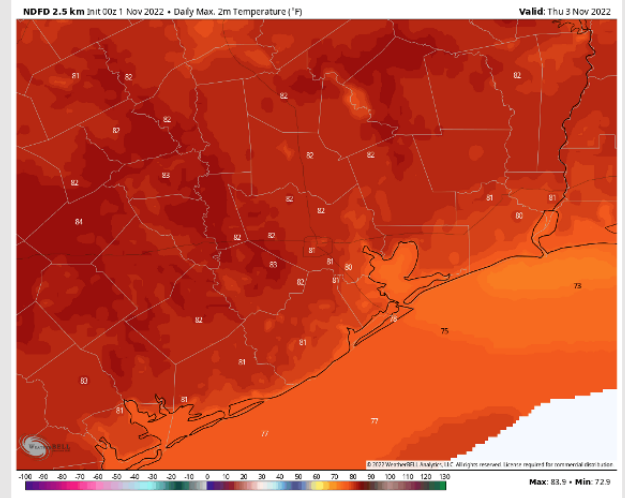
## Precip Forecast: 3 PM CT



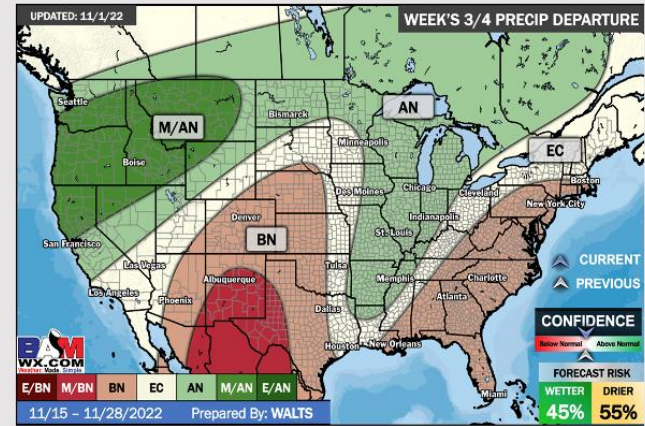
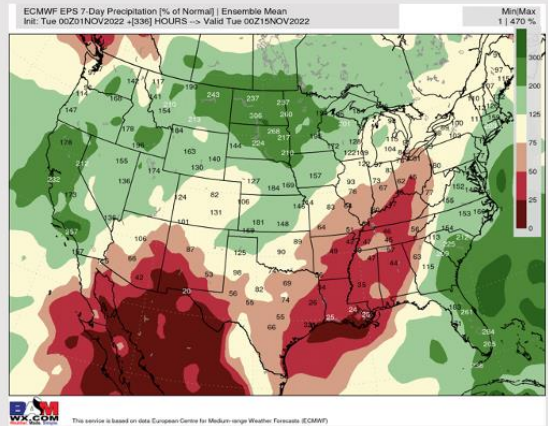
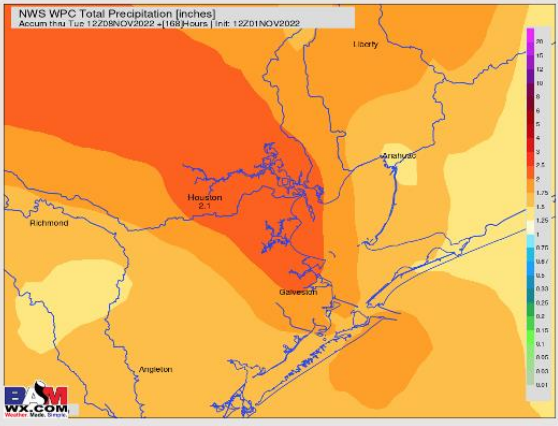
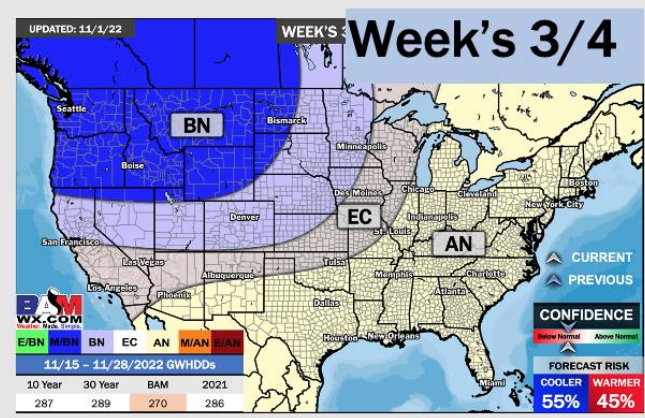
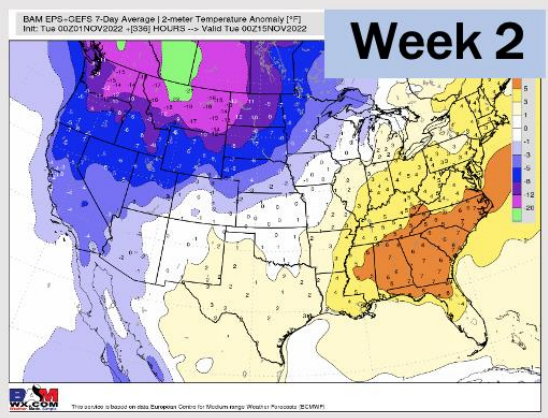
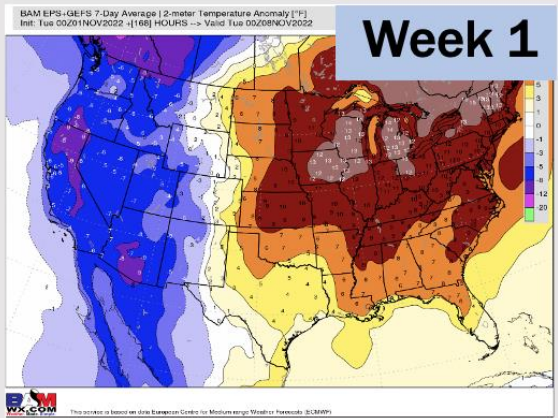
Wind Speed  
5 PM CT



High Temps  
Thurs



# Houston Pilots: 11/1/22



- Temperatures expected to be slightly above normal next week. More widespread chances of rain going into Wednesday, Saturday, and Sunday.
- Week 2 to feature slightly above normal temperatures and below normal precipitation.
- The weeks ¾ timeframe in November looks to feature above normal temperatures and below normal to normal risks for precip.