

# Houston Pilots Forecast Package



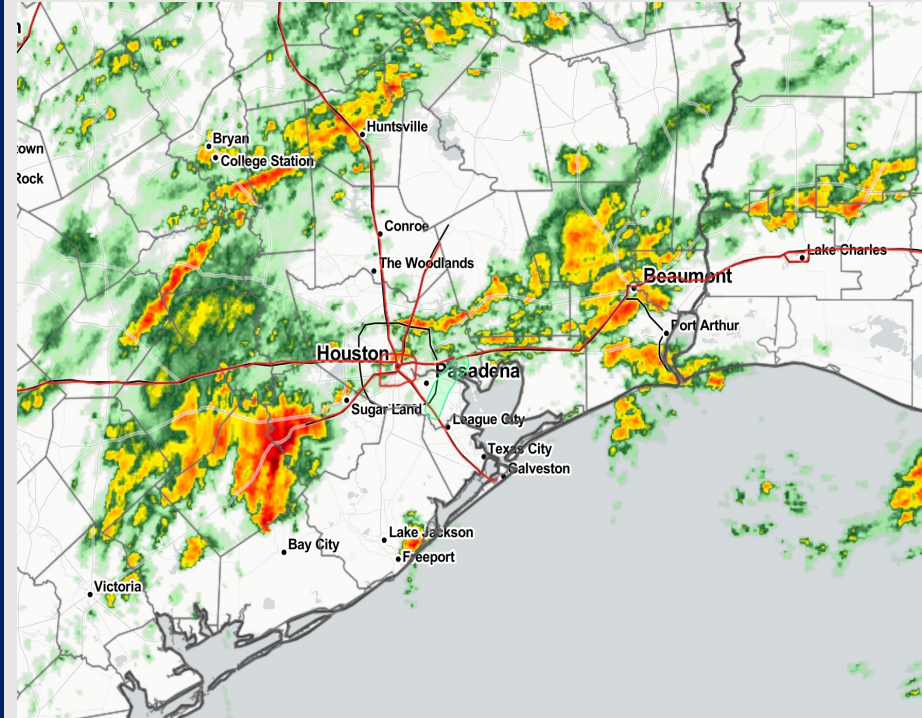
Updated: 1:45 PM CT

Thursday, November 24, 2022

Forecaster: John Kemper

## Weather Headlines

- Anticipating showers/thunderstorms to continue to be possible for all locations throughout the afternoon into the evening. Reduced visibility will possible under heavier T-Storms due to increased rainfall rates.
- Patchy, Dense Sea Fog will once again be possible after 9PM-CT through 9AM-CT. Not favoring fog to be as widespread as previous night, but will need to monitor trends. Lower confidence remains at this time.
- **MORE DETAILS ON FOG DETAILS BELOW. SEE VISIBLITIY SLIDE**
- Not anticipating any tropical activity concerns over the next 10 days. Entering the last week of Atlantic Hurricane Season.



**Radar/NWS Alerts: 1:30 PM CT**

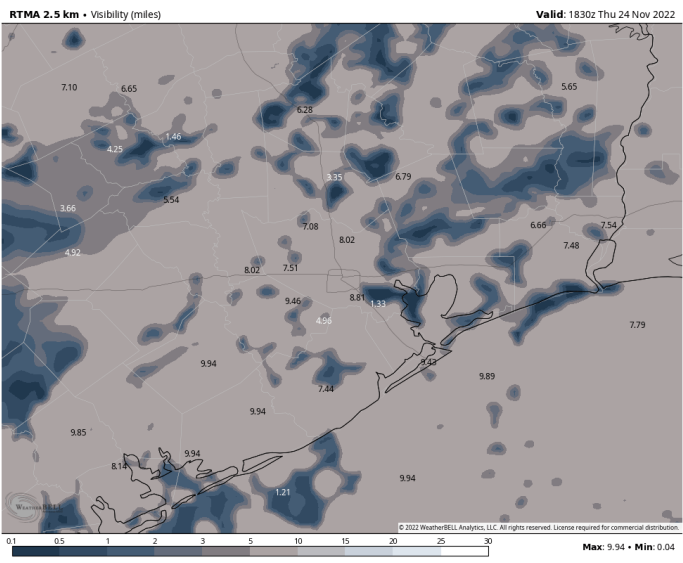


As always, please do not hesitate to reach out to us with any forecast questions via the chat option on the Weather Porthole or our on-call number, **(317)-560-8122** press 1 for forecast questions.

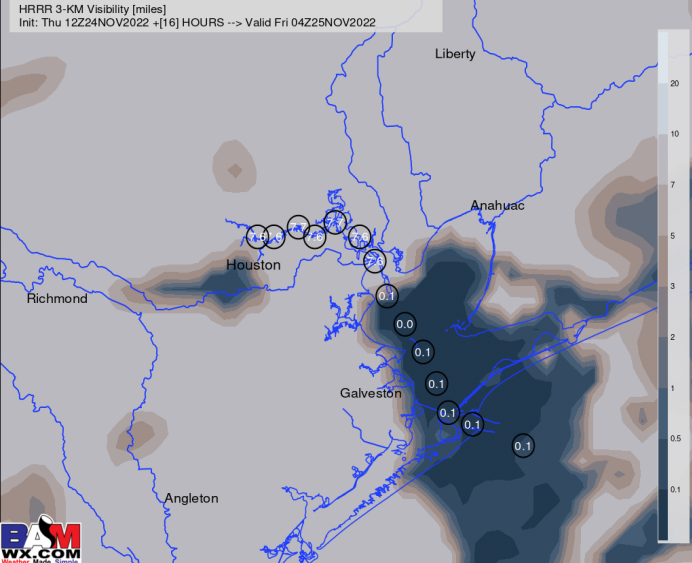
# Houston Pilots Visibility Report



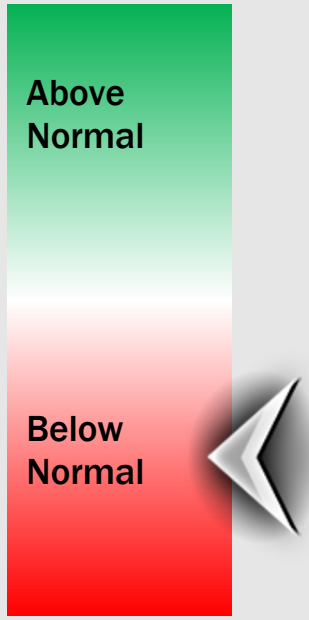
## Current Visibility as of 1:15PM-CT



## 10PM-CT FRI Visibility (miles)



## Confidence



**Reduced Visibility Threat**

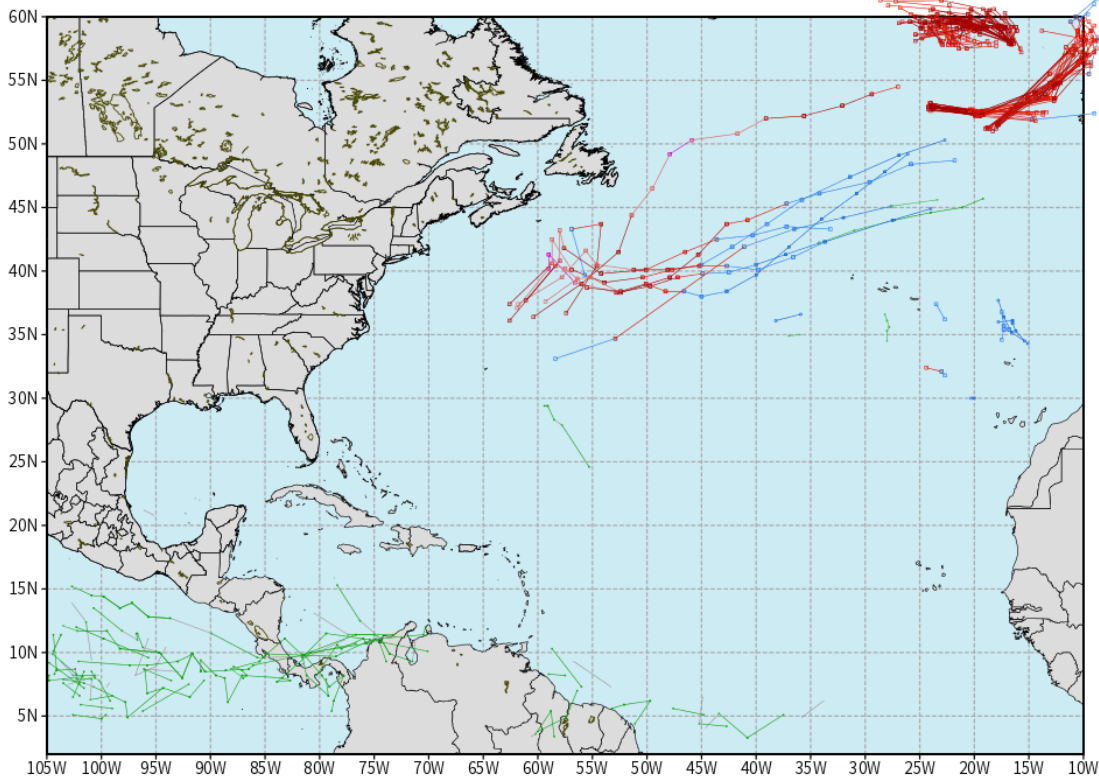
**10PM - 9 AM FRI      Medium**

- Areas of Patchy Fog / Dense Fog will be possible after 9PM-CT tonight. Models may be a bit overdone with coverage due to unfavorable wind orientation, but will need to monitor trends.
- Confidence is low for exact timing of greatest risk for fog. Favoring risk to continue through 9AM-CT.
- Periods of Heavy rain may reduce visibilities to less than 6 miles during the afternoon and evening. For Patchy, dense fog, visibilities of less than 1 mile will be possible after 10PM-CT

## European Data Tracks Next 10 Days

ECMWF ATLANTIC EPS Cyclone Locations --> Next [10-days]  
INIT: 00Z24NOV2022 --> UNTIL 00Z04DEC2022

o-o ENSEMBLE MEAN  
o-o 1000 - 1010 hPa  
o-o 980 - 999 hPa  
o-o 960 - 979 hPa  
o-o 950 - 959 hPa  
o-o < 950 hPa



[weathermodels.com](http://weathermodels.com)

**Not anticipating any tropical activity for SE TX over the next 10 days.**

### Confidence



Above Normal      Below Normal

# Houston Pilots Visibility Report



**Confidence**

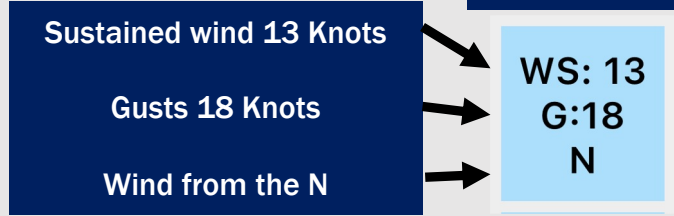
Above Normal
Below Normal

Time	Thu 12pm	Thu 1pm	Thu 2pm	Thu 3pm	Thu 4pm	Thu 5pm	Thu 6pm	Thu 7pm	Thu 8pm	Thu 9pm	Thu 10pm	Thu 11pm	Fri 12am	Fri 1am	Fri 2am	Fri 3am	Fri 4am	Fri 5am	Fri 6am	Fri 7am	Fri 8am	Fri 9am	Fri 10am	Fri 11am	Fri 12pm	Fri 1pm	Fri 2pm	Fri 3pm	Fri 4pm	Fri 5pm	Fri 6pm	Fri 7pm	Fri 8pm	Fri 9pm	Fri 10pm	Fri 11pm	
610 Bridge	7	7	7	7	8	8	7	7	8	8	8	8	8	9	9	5	5	4	4	2	1	2	3	2	3	2	2	3	2	2	2	3	3	4	4	4	
Kinder 1	7	7	7	7	7	7	7	7	8	8	8	8	8	9	9	5	5	4	5	3	2	4	4	4	4	4	4	4	4	4	4	4	4	3	5	4	4
Greens Bayou	7	7	7	7	7	7	7	7	8	8	8	8	8	9	9	5	6	6	6	5	2	5	6	6	6	6	6	5	6	6	4	5	5	3	6	5	4
Shell Crude	7	7	7	7	7	7	7	7	8	8	8	8	8	9	9	5	8	8	7	8	3	8	7	7	9	9	7	8	8	5	8	6	4	6	6	4	
Lynchburg Ferries	7	7	7	7	7	7	7	7	7	8	8	8	9	9	9	4	8	8	7	8	3	8	7	7	9	9	7	8	9	5	8	6	4	7	6	4	
Exxon 3	7	7	7	7	7	7	7	7	7	8	8	8	8	9	9	4	8	8	7	8	3	8	7	7	9	9	9	8	9	5	8	7	6	7	7	3	
Morgans Point	7	7	7	7	7	7	7	7	7	7	8	8	8	9	9	5	8	8	7	8	5	8	8	9	9	9	9	8	9	7	8	7	7	8	8	4	
75/76	7	7	7	7	7	7	7	7	7	7	7	8	8	9	9	5	8	8	7	8	5	8	8	8	9	9	9	8	9	6	8	7	7	8	8	4	
63/64	7	7	7	7	7	7	7	7	7	7	7	8	8	9	9	5	8	8	7	8	5	8	7	8	9	9	9	8	9	6	8	7	7	8	8	4	
51/52	7	7	7	7	8	7	7	8	7	7	7	8	8	9	9	4	8	8	7	8	6	8	7	7	9	9	9	7	8	5	8	7	7	8	8	5	
37/38	7	7	7	8	8	7	7	8	7	7	7	8	7	8	8	4	8	8	7	7	7	8	7	7	8	7	8	7	8	7	8	7	7	8	8	5	
25/26	7	7	7	9	7	7	7	8	7	7	7	8	7	8	8	4	8	8	7	8	8	8	7	7	7	7	7	7	7	8	8	7	7	8	8	6	
11/12	7	7	7	8	7	7	7	8	7	7	7	8	7	8	8	4	8	8	7	8	8	8	8	7	7	7	7	7	7	8	8	8	7	8	8	6	
1 & 2 Bravo	7	7	7	7	7	7	7	7	7	7	0.12	7	8	8	8	4	8	8	7	8	8	8	8	7	7	7	9	9	9	7	8	8	9	7	8	8	8

# Houston Pilots Wind Report



**Example**



Time Knots	Thu 12pm	Thu 1pm	Thu 2pm	Thu 3pm	Thu 4pm	Thu 5pm	Thu 6pm	Thu 7pm	Thu 8pm	Thu 9pm	Thu 10pm	Thu 11pm	Fri 12am	Fri 1am	Fri 2am	Fri 3am	Fri 4am	Fri 5am	Fri 6am	Fri 7am	Fri 8am	Fri 9am	Fri 10am	Fri 11am	Fri 12pm	Fri 1pm	Fri 2pm	Fri 3pm	Fri 4pm	Fri 5pm	Fri 6pm	Fri 7pm	Fri 8pm	Fri 9pm	Fri 10pm	Fri 11pm		
610 Bridge	7	5	5	6	4	4	3	12	12	10	10	12	10	9	7	6	7	6	6	6	7	8	8	9	8	9	8	9	10	9	9	9	9	9	9	9	8	
	16	12	12	13	14	10	10	9	27	29	28	29	31	30	27	14	13	13	12	12	13	14	15	16	16	17	17	16	16	17	17	17	17	19	19	19	20	20
	ESE	SE	ESE	SE	SE	SE	SE	W	NNW	NNE	NE	NE	NE	NE	NE	NE	NE	NNE	NNE	NNE	NE	NE	NE	NE	NE	NE	NE	NE	NE	NE	ENE	ENE	ENE	ENE	E	E	E	
Kinder 1	8	6	5	6	6	4	4	3	11	12	9	10	11	11	9	7	6	7	6	7	8	8	9	8	9	10	9	10	9	9	9	10	9	10	9	9	8	
	16	12	13	12	15	10	10	9	24	28	27	28	31	30	26	14	13	12	12	13	14	15	15	16	17	17	16	17	17	17	17	19	19	19	20	20	20	
	ESE	SE	SE	ESE	SE	SE	SE	WSW	NNW	NNE	NE	NE	NE	NE	ENE	NE	NE	NE	NNE	NNE	NNE	NE	NE	NE	NE	NE	NE	NE	NE	ENE	ENE	ENE	ENE	E	E	E		
Greens Bayou	8	6	6	7	7	4	2	8	13	10	11	12	12	9	7	6	7	6	7	8	8	9	9	9	10	9	10	9	10	9	10	9	9	9	9	8		
	15	13	14	14	17	11	10	8	20	27	28	28	31	30	26	13	13	12	12	13	14	14	15	16	16	17	16	17	16	17	17	18	19	19	19	20	19	
	ESE	SE	SE	SE	SE	SE	SE	WSW	NW	NNE	NE	NNE	NE	NE	NE	NE	NE	NNE	NNE	NNE	NE	NE	NE	NE	NE	NE	NE	NE	NE	ENE	ENE	ENE	ENE	E	E	E		
Shell Crude	7	6	6	7	7	4	4	5	13	10	10	12	12	8	7	6	7	6	7	8	8	9	9	9	10	10	9	10	10	10	10	9	10	9	10	9	9	
	14	14	15	15	17	11	9	9	16	26	26	27	32	30	25	14	13	13	13	13	13	14	14	15	15	16	16	16	17	17	18	19	19	19	20	20	20	
	ESE	SE	SE	SE	SE	SSE	SE	SSW	W	NNE	NE	NNE	NE	NE	NE	NE	NE	NNE	NNE	NNE	NE	NE	NE	NE	NE	NE	NE	NE	NE	ENE	ENE	ENE	ENE	E	E	E		
Lynchburg Ferries	5	6	6	7	7	5	4	3	13	11	11	13	13	8	7	6	7	7	7	8	8	9	9	9	9	10	10	9	10	10	10	10	10	10	10	10	9	
	13	14	16	16	17	13	10	8	13	26	28	27	32	29	25	14	13	13	13	13	13	14	14	15	15	16	16	15	17	17	18	18	19	19	20	19		
	ESE	SE	SE	SE	SE	SSE	SSW	W	NNE	NE	NNE	NE	NE	NE	NE	NE	NE	NE	NNE	NNE	NNE	NE	NE	NE	NE	NE	NE	NE	NE	ENE	ENE	ENE	ENE	E	E	E		
Exxon 3	3	6	7	8	7	7	5	5	3	13	11	11	14	13	8	7	7	7	7	8	8	9	9	9	10	10	10	10	10	10	10	10	10	10	10	10	10	
	12	16	18	17	17	15	10	9	12	26	26	28	32	29	25	15	14	14	14	14	14	14	14	15	15	16	17	16	17	17	18	17	19	19	19	20	19	
	SE	SE	SE	SE	SE	SE	SSE	S	SW	NNE	NE	NNE	NE	NE	NE	NE	NE	NNE	NNE	NNE	NE	NE	NE	NE	NE	NE	NE	NE	NE	ENE	ENE	ENE	ENE	E	E	E		
Morgans Point	4	7	7	9	9	8	6	4	5	10	13	13	16	15	11	9	8	8	8	8	8	9	9	10	10	10	10	10	10	10	11	11	11	11	11	11	11	
	13	17	18	18	18	14	9	8	13	23	26	29	33	31	26	16	16	15	15	15	15	15	15	16	16	17	17	17	17	18	18	18	20	20	21	20	20	
	SE	SE	SE	SE	SE	SE	SSE	S	SSW	SE	NE	NNE	NE	NE	ENE	ENE	NE	NE	NE	NE	NE	NE	NE	NE	NE	NE	NE	NE	NE	ENE	ENE	ENE	ENE	E	E	E		
75/76	6	6	6	8	11	8	6	4	6	6	19	17	19	21	17	11	10	10	10	10	10	11	11	11	12	11	11	11	11	12	12	12	13	13	13	13	13	
	15	17	18	18	18	12	8	8	13	17	28	28	33	34	29	18	17	16	16	16	16	16	16	17	17	17	18	18	18	18	18	18	19	19	20	21	21	21
	ESE	ESE	ESE	ESE	ESE	ESE	SSE	SSW	SW	WSW	NNE	NNE	NE	NE	NE	ENE	ENE	ENE	ENE	ENE	ENE	ENE	ENE	ENE	ENE	ENE	ENE	ENE	ENE	ENE	ENE	ENE	ENE	ENE	ENE	E	E	
63/64	6	7	8	10	11	8	6	4	6	5	21	19	20	24	19	12	11	11	11	11	11	12	12	12	12	12	12	12	12	13	12	13	14	14	14	14	14	
	14	18	18	18	16	12	9	10	12	12	29	28	33	35	31	18	17	17	17	16	16	16	16	16	17	17	18	18	18	18	18	20	19	21	21	22	22	
	ESE	ESE	SE	ESE	ESE	SE	SSE	SSW	SW	SW	NNE	NE	NE	NE	NE	ENE	ENE	ENE	ENE	ENE	ENE	ENE	ENE	ENE	ENE	ENE	ENE	ENE	ENE	ENE	ENE	ENE	ENE	ENE	E	E	E	
51/52	7	10	10	12	9	9	8	6	6	5	13	20	18	22	19	12	11	11	11	11	11	12	12	12	12	13	12	13	13	13	12	14	14	14	14	15	15	
	16	19	18	19	12	12	13	12	12	10	25	29	31	34	32	18	17	17	17	16	16	16	16	16	17	17	18	18	19	19	20	20	21	21	23	23		
	ESE	ESE	SE	SE	ESE	SE	SSE	SSW	SW	SSW	NNE	NE	NNE	NNE	NE	ENE	ENE	ENE	ENE	ENE	ENE	ENE	ENE	ENE	ENE	ENE	ENE	ENE	ENE	ENE	ENE	ENE	ENE	ENE	E	E	E	
37/38	10	11	10	12	7	9	10	8	7	4	3	20	17	20	20	12	12	12	12	12	12	12	13	12	13	13	13	13	13	13	13	14	15	15	15	16	15	
	18	20	18	18	10	12	16	13	12	8	16	29	28	32	32	19	18	17	17	16	16	16	16	16	17	17	18	18	19	19	21	22	22	24	24	24		
	ESE	SE	SE	SE	SE	SSE	S	SSW	SW	SSW	NNE	NNE	NE	NE	ENE	ENE	ENE	ENE	ENE	ENE	ENE	ENE	ENE	ENE	ENE	ENE	ENE	ENE	ENE	ENE	ENE	ENE	ENE	ENE	E	E	E	
25/26	11	13	11	11	6	8	10	7	6	3	1	16	16	20	19	11	12	12	12	12	12	12	13	12	13	13	13	13	14	13	14	15	15	15	15	15		
	18	21	17	16	9	13	15	13	11	8	7	26	26	30	30	18	18	17	17	16	16	16	16	16	17	17	18	18	19	20	22	22	23	24	24	24		
	ESE	SE	SE	SE	SE	SSE	S	SSW	SW	S	WNW	NNE	NNE	NE	NE	ENE	ENE	ENE	ENE	ENE	ENE	ENE	ENE	ENE	ENE	ENE	ENE	ENE	ENE	ENE	ENE	ENE	ENE	ENE	E	E	E	
11/12	13	13	12	8	6	9	9	7	6	3	1	11	16	19	18	12	12	12	13	13	13	13	13	13	13	13	13	14	14	14	14	15	16	16	16	16		
	19	20	18	12	10	13	14	12	11	7	4	19	24	29	29	18	18	18	18	17	17	16	17	17	17	18	19	20	22	23	23	24	24	24	24	24		
	ESE	SE	SE	SE	SE	S	S	SSW	SW	S	WSW	NNE	NNE	NE	NE	ENE	ENE	ENE	ENE	ENE	ENE	ENE	ENE	ENE	ENE	ENE	ENE	ENE	ENE	ENE	ENE	ENE	ENE	ENE	E	E	E	
1 & 2 Bravo	14	13	13	10	14	11	8	6	6	4	2	6	20	23	21	13	14	14	14	14	14	14	14	15	15	15	15	15	16	16	17	18	18	17	17	17		
	20	19	17	16	20	16	13	11	10	7	4	7	24	28	28	19	19	19	19	18	18	17	18	17	18	18	19	20	21	22	23	24	24	25	25	25		
	ESE	SE	ESE	SE	SE	S	S	S	SSW	SSW	SE	NNE	NE	NE	NE	ENE	ENE	ENE	ENE	ENE	ENE	ENE	ENE	ENE	ENE	ENE	ENE	ENE	ENE	ENE	ENE	ENE	ENE	ENE	E	E	E	

See slides below for official thoughts on winds.



# Houston Pilots: Thur. 11/24/2022



## Forecast Discussion

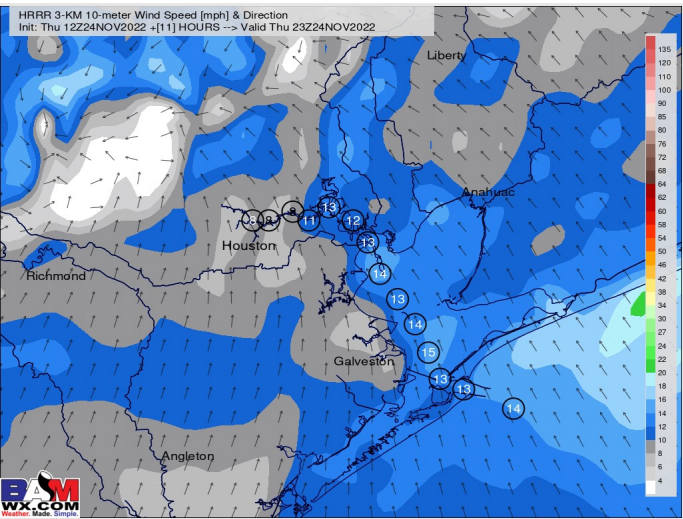
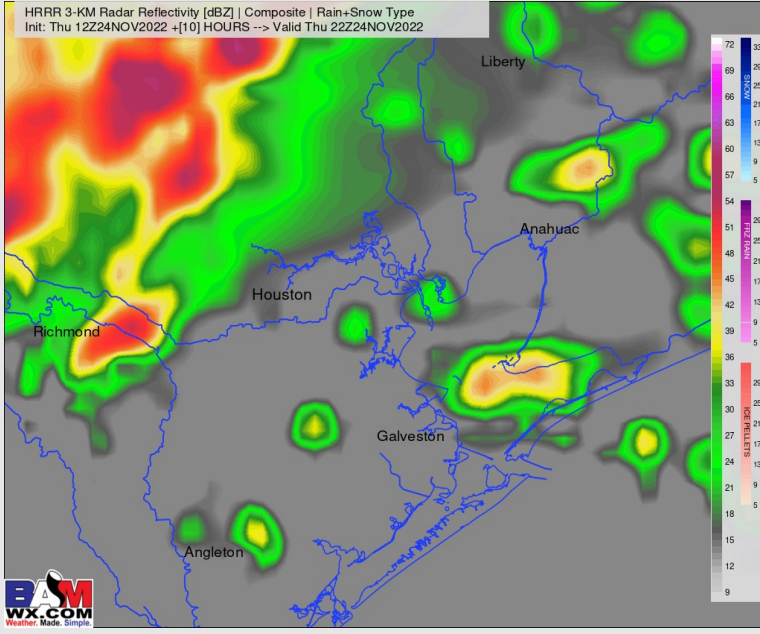
**Precip:** Scattered to widespread coverage of heavy rain and T-Storms will continue through 8PM-CT. Favoring coverage to become more isolated through the overnight period. Stronger storm gusts of up to 45MPH will be possible.

**Wind:** Winds of 5 -10 kts out of the SE will continue for stations N of Morgan's Point. Winds will become more variable after 5 PM until 7 PM. Winds for all locations of 12 – 16 kts will continue, with an occasional gust of up to 17-23 kts as winds veer out of the N/NE by 10PM.

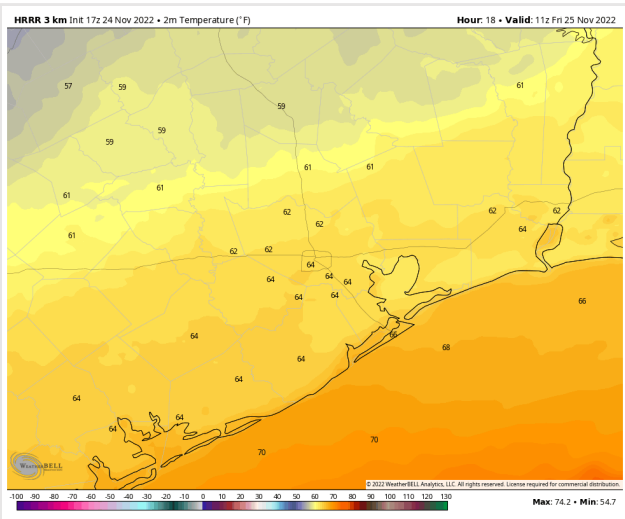
**Temps:** Warming trend continues. High temps will be in the low/mid 70s F across all stations. Temp lows tonight. Temp lows to reach the mid 60's on Friday Morning.

**Visibility:** (Please see details on Visibility Slide Above)

## Precip Forecast: 4 PM CT



Wind Speed  
4 PM CT



Low Temps  
Today

# Houston Pilots: Fri. 11/25/2022



## Forecast Discussion

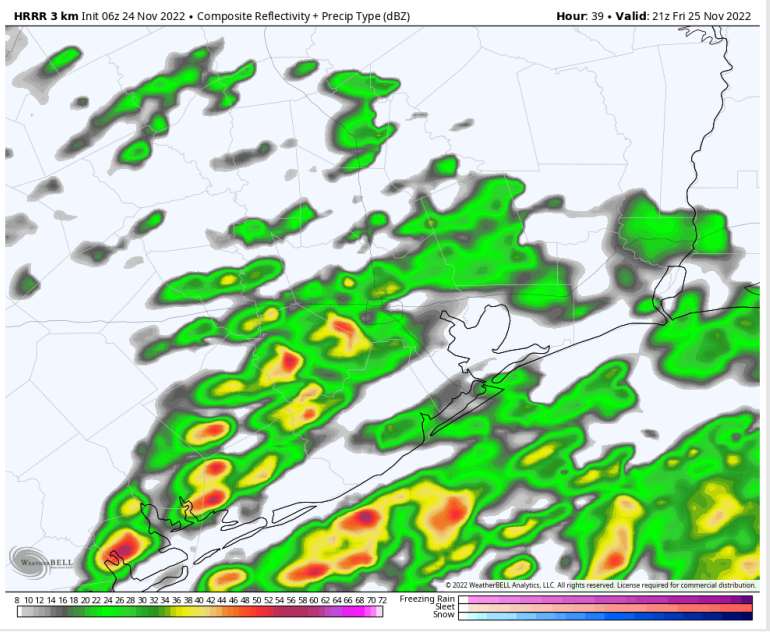
**Precip:** A slight chance (30%) for exiting showers and storms in the early morning from 12 AM – 1 AM. Then anticipating a dry slot from 1 AM – 9 AM. After 9 AM, more widespread showers and storms will enter the region (80 % chance) and last through the rest of the night. Locally heavy downpours and lightning will be possible under stronger storms.

**Wind:** Winds will be out of the NE for the entire day. Winds N of Morgan’s Point will start off at 4-9 kts and S of Morgan’s Point at 12-18 kts. Winds will then increase by 1 PM to 12 – 17 kts N of Morgan’s Point, and 17 – 23 kts S of Morgan’s Point and remain elevated from 1 PM – 12 AM. **Wind gusts could be over 30+ kts after 3 PM.**

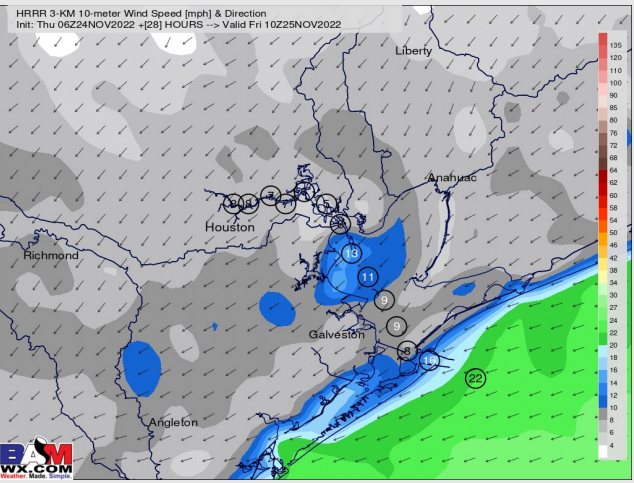
**Temps:** High temps Friday will be in the high 60s F/near 70 F across all stations.

**Visibility:** Patchy, dense fog will be possible through 9AM-CT. Lower confidence continues at this time. (Please see latest Visibility Slide Above for more information)

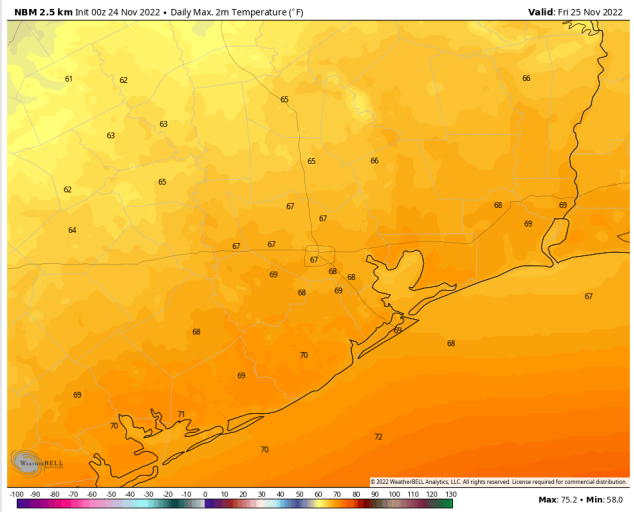
## Precip Forecast: 3 PM CT



Wind Speed  
4 AM CT



High Temps  
Friday



# Houston Pilots: sat. 11/26/2022



## Forecast Discussion

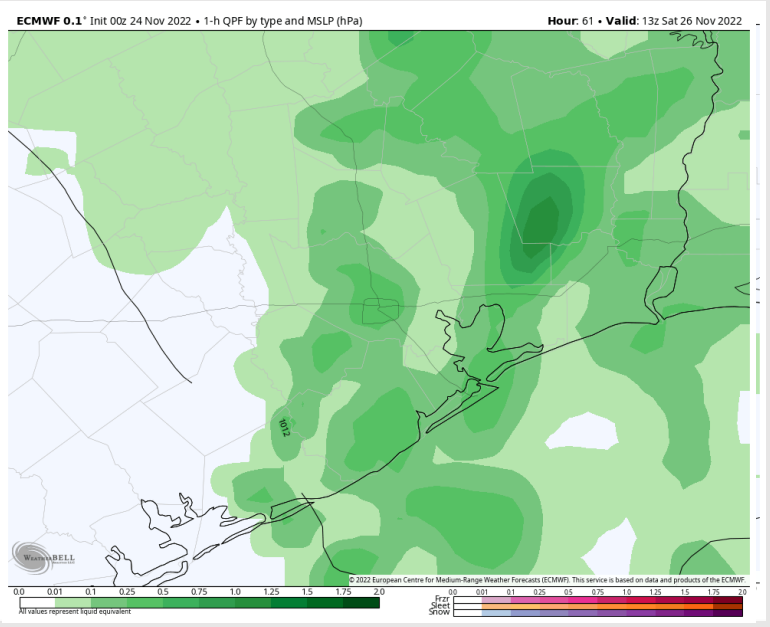
**Precip:** Widespread showers/storms (80% chance) will continue throughout most of the AM hours on Saturday. By 9 AM, chances decrease to 40% as showers/storms become more scattered throughout the area. From 12 PM throughout the rest of the day, anticipating dry conditions.

**Wind:** Winds will shift out of the SE by midnight and continue to veer until coming out of the SW by 11 AM for the rest of the day. Winds at 9-14 kts N of Morgan's Point for the entire day and 17-23 kts until 1 PM. After 1 PM, winds calm a tad to 14-20 kts S of Morgan's Point for the rest of the day Saturday.

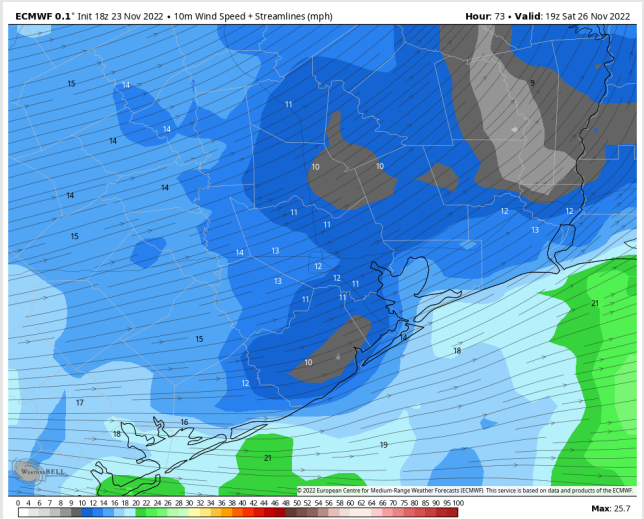
**Temps:** High temperatures on Saturday in the high 60s F for all stations.

**Visibility:** Not anticipating any visibility concerns at this time.

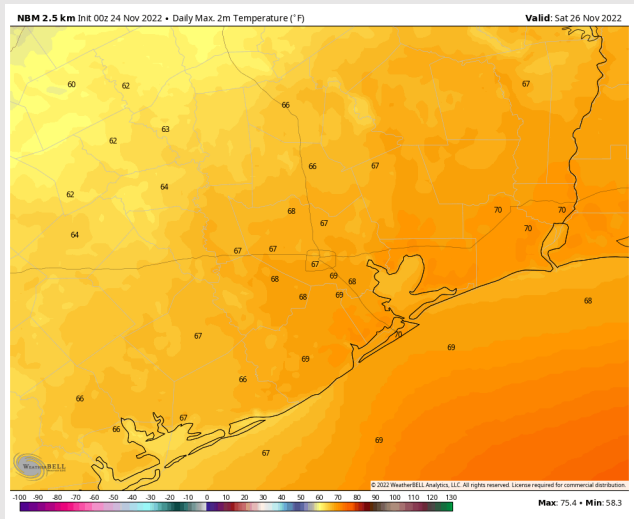
## Precip Forecast: 7 AM CT



Wind Speed  
1 PM CT

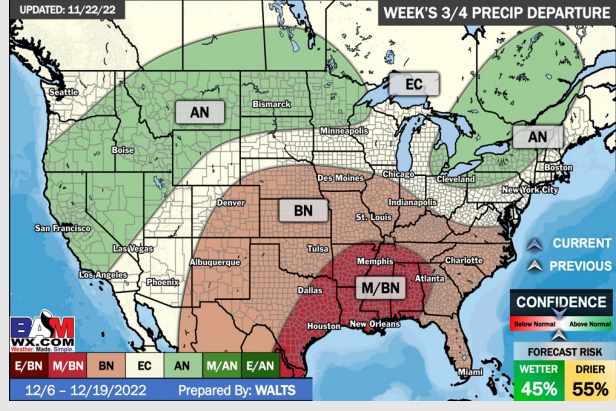
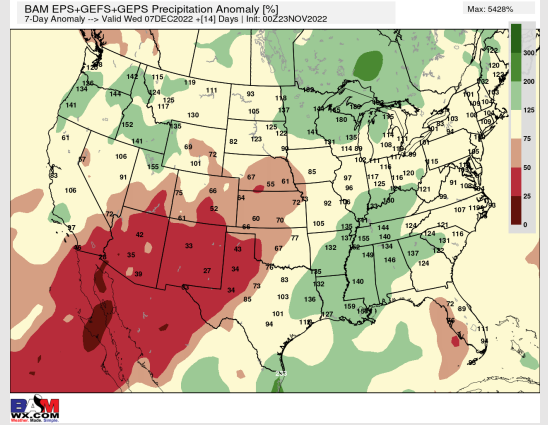
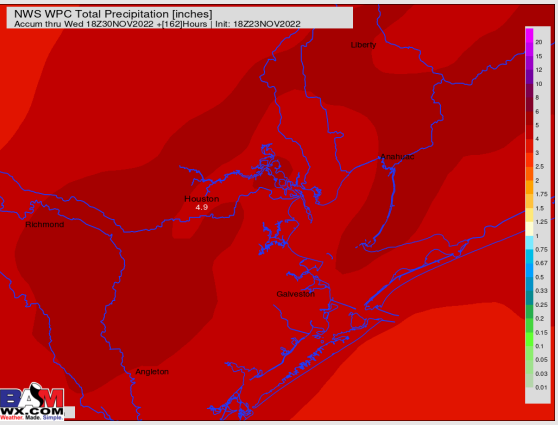
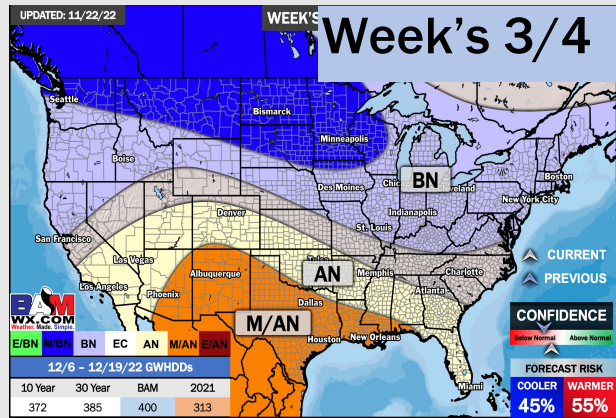
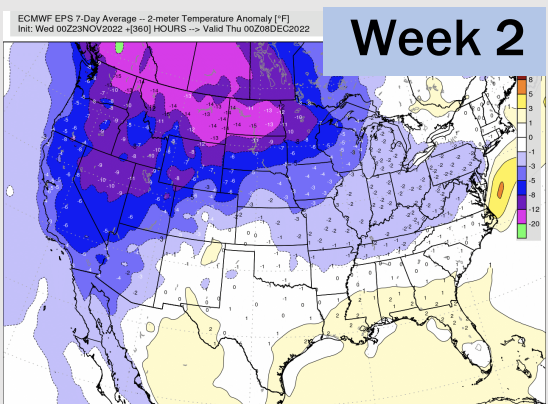
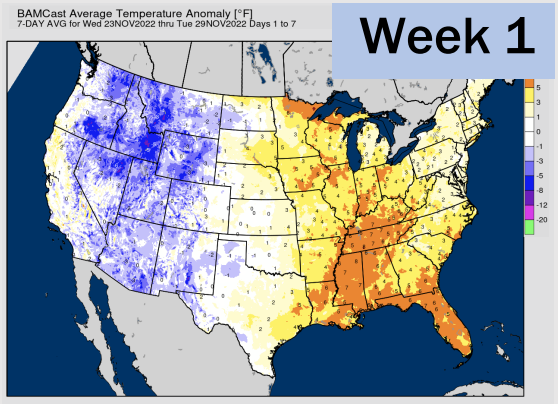


High Temps  
Saturday





# Houston Pilots: 11/24/22



- Temperatures expected to be above normal this week. A quieter mid-week is followed by rain chances Thursday/ Friday.
- Week 2 is expected to be near normal for temperatures and near normal for rain chances into early December.
- The weeks 3/4 timeframe looks to feature above normal temperatures and below normal risks for precipitation.