

Houston Pilots Forecast Package

Houston Pilots

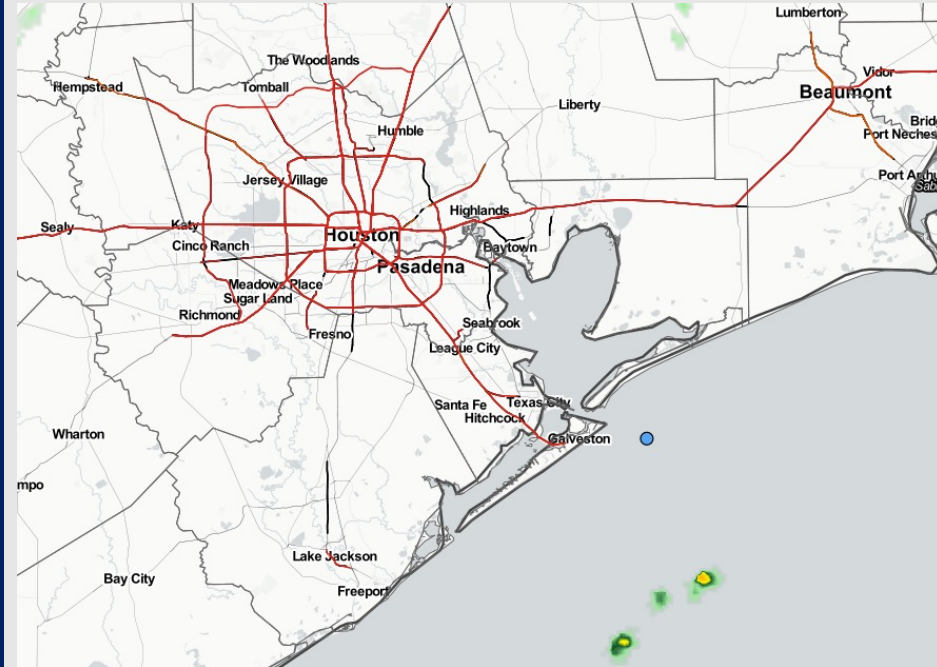
Updated: 1:00 PM CT

Sunday, November 6, 2022

Forecaster: Alyssa McClung

Weather Headlines

- Anticipating scattered chances for showers/storms over the next few days.
- No direct tropical activity is favored in SE TX over the next 7-10 days.
- Sustained winds will continue to come out of the SE the next couple days.
- Anticipating areas of patchy, dense fog to be possible Monday AM.



Radar/ NWS Alerts: 1:00 PM CT



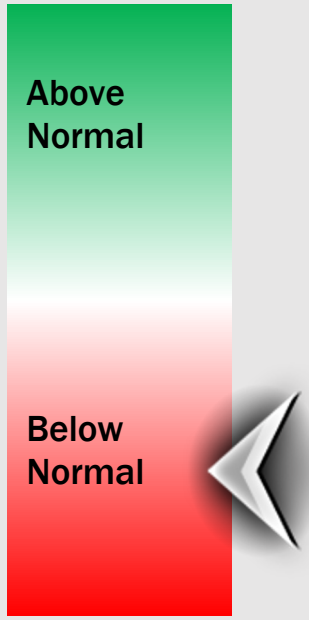
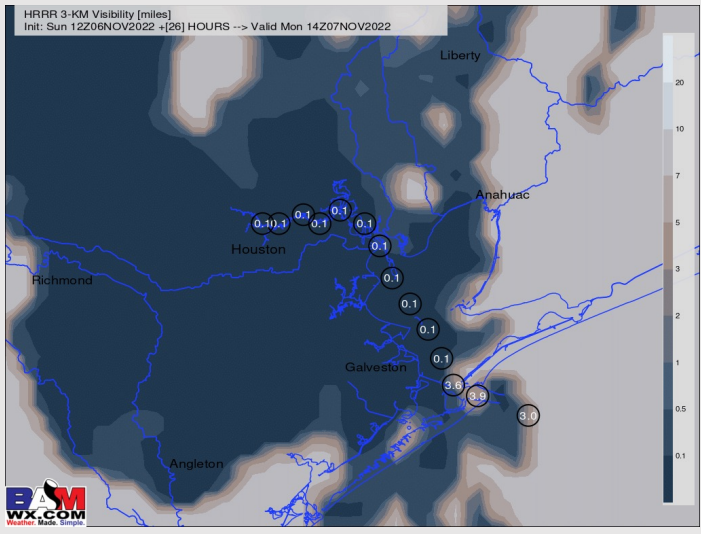
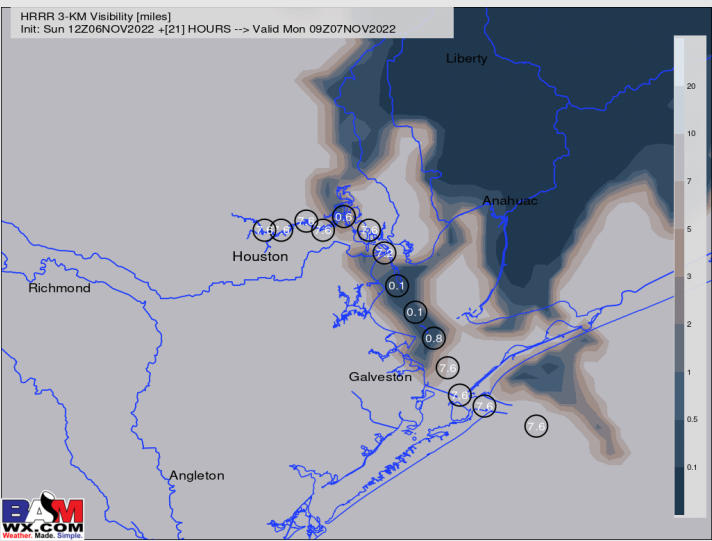
As always, please do not hesitate to reach out to us with any forecast questions via the chat option on the Weather Porthole or our on-call number, **(317)-560-8122** press 1 for forecast questions.

Houston Pilots Visibility Report



3 AM-CST SUN Visibility (miles) 8 AM-CST SUN Visibility (miles)

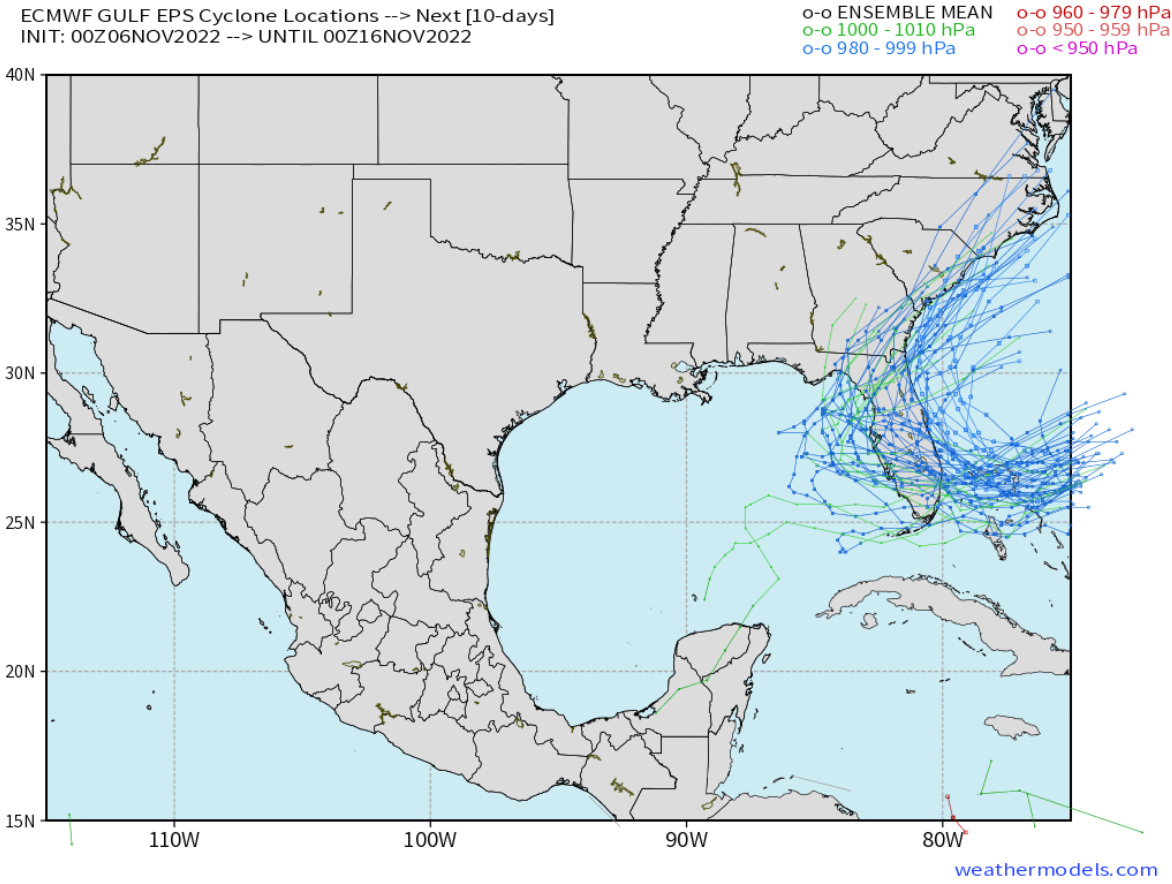
Confidence



Reduced Visibility Threat
2 AM MON ~ 12 PM MON **Medium**

- Majority of data continues to suggest areas of widespread patchy dense fog, with greatest widespread risk beginning NE of Galv. Bay.
- While model/application may be a bit aggressive with this setup, localized areas of patchy fog with visibilities less than $< .5$ mi will be possible for ALL STATIONS.
- Lower confidence still exists on how widespread/dense this fog could become, but overall anticipate this patchy fog to lift between 10AM-12PM.
- Patchy dense fog risk may be possible Tuesday AM.

European Data Tracks Next 10 Days



Monitoring potential tropical development SE of the Bahamas. There are no tropical threats anticipated for SE TX over the next 7-10 days.

Confidence



Above Normal Below Normal

Houston Pilots Visibility Report



Time	11-06-2022 Sun 12pm	11-06-2022 Sun 1pm	11-06-2022 Sun 2pm	11-06-2022 Sun 3pm	11-06-2022 Sun 4pm	11-06-2022 Sun 5pm	11-06-2022 Sun 6pm	11-06-2022 Sun 7pm	11-06-2022 Sun 8pm	11-06-2022 Sun 9pm	11-06-2022 Sun 10pm	11-06-2022 Sun 11pm	11-07-2022 Mon 12am	11-07-2022 Mon 1am	11-07-2022 Mon 2am	11-07-2022 Mon 3am	11-07-2022 Mon 4am	11-07-2022 Mon 5am	11-07-2022 Mon 6am	11-07-2022 Mon 7am	11-07-2022 Mon 8am	11-07-2022 Mon 9am	11-07-2022 Mon 10am	11-07-2022 Mon 11am	11-07-2022 Mon 12pm	11-07-2022 Mon 1pm	11-07-2022 Mon 2pm	11-07-2022 Mon 3pm	11-07-2022 Mon 4pm	11-07-2022 Mon 5pm	11-07-2022 Mon 6pm	11-07-2022 Mon 7pm	11-07-2022 Mon 8pm	11-07-2022 Mon 9pm	11-07-2022 Mon 10pm	11-07-2022 Mon 11pm							
Houston Pilots N - 610 Bridge	10.000	10.000	10.000	10.000	10.000	10.000	10.000	10.000	10.000	10.000	10.000	10.000	6.964	6.964	6.513	5.514	4.931	3.897	3.897	3.943	5.524	10.000	10.000	10.000	10.000	10.000	10.000	10.000	10.000	10.000	10.000	10.000	10.000	10.000	10.000	10.000	10.000	10.000	10.000	10.000			
Houston Pilots M - Kinder 1	10.000	10.000	10.000	10.000	10.000	10.000	10.000	10.000	10.000	10.000	10.000	10.000	6.964	6.964	6.513	5.514	4.931	3.897	3.897	3.943	5.524	10.000	10.000	10.000	10.000	10.000	10.000	10.000	10.000	10.000	10.000	10.000	10.000	10.000	10.000	10.000	10.000	10.000	10.000	10.000	10.000		
Houston Pilots L - Greens Bayou	10.000	10.000	10.000	10.000	10.000	10.000	10.000	10.000	10.000	10.000	10.000	10.000	6.952	6.944	6.342	5.355	4.931	3.897	3.897	3.943	5.535	10.000	10.000	10.000	10.000	10.000	10.000	10.000	10.000	10.000	10.000	10.000	10.000	10.000	10.000	10.000	10.000	10.000	10.000	10.000	10.000		
Houston Pilots K - Shell Crude	10.000	10.000	10.000	10.000	10.000	10.000	10.000	10.000	10.000	10.000	10.000	10.000	6.948	6.948	5.920	4.964	4.931	3.897	3.897	3.943	6.429	10.000	10.000	10.000	10.000	10.000	10.000	10.000	10.000	10.000	10.000	10.000	10.000	10.000	10.000	10.000	10.000	10.000	10.000	10.000	10.000		
Houston Pilots J - Lynchburg Ferries	10.000	10.000	10.000	10.000	10.000	10.000	10.000	10.000	10.000	10.000	10.000	9.144	6.958	6.958	5.886	4.931	3.897	3.897	3.897	3.943	6.476	10.000	10.000	10.000	10.000	10.000	10.000	10.000	10.000	10.000	10.000	10.000	10.000	10.000	10.000	10.000	10.000	10.000	10.000	10.000	10.000		
Houston Pilots I - Exxon 3	10.000	10.000	10.000	10.000	10.000	10.000	10.000	10.000	10.000	10.000	10.000	10.000	6.958	6.958	5.886	4.931	3.897	3.897	3.897	3.394	6.476	9.033	10.000	10.000	10.000	10.000	10.000	10.000	10.000	10.000	10.000	10.000	10.000	10.000	10.000	10.000	10.000	10.000	10.000	10.000	10.000	10.000	
Houston Pilots H - Morgans Point	10.000	10.000	10.000	10.000	10.000	10.000	10.000	10.000	10.000	10.000	10.000	10.000	7.954	6.958	5.886	4.931	4.397	3.897	3.897	3.943	6.476	9.033	10.000	10.000	10.000	10.000	10.000	10.000	10.000	10.000	10.000	10.000	10.000	10.000	10.000	10.000	10.000	10.000	10.000	10.000	10.000	10.000	
Houston Pilots G - 75/76	10.000	10.000	10.000	10.000	10.000	10.000	10.000	10.000	10.000	10.000	10.000	10.000	7.954	6.958	6.920	5.447	4.931	4.931	4.456	3.943	6.476	10.000	10.000	10.000	10.000	10.000	10.000	10.000	10.000	10.000	10.000	10.000	10.000	10.000	10.000	10.000	10.000	10.000	10.000	10.000	10.000	10.000	
Houston Pilots F - 63/64	10.000	10.000	10.000	10.000	10.000	10.000	10.000	10.000	10.000	10.000	10.000	10.000	7.954	6.958	6.920	5.886	5.487	5.487	6.061	5.472	6.487	10.000	10.000	10.000	10.000	10.000	10.000	10.000	10.000	10.000	10.000	10.000	10.000	10.000	10.000	10.000	10.000	10.000	10.000	10.000	10.000	10.000	
Houston Pilots E - 51/52	10.000	10.000	10.000	10.000	10.000	10.000	10.000	10.000	10.000	10.000	10.000	10.000	8.252	6.920	6.920	6.324	5.886	5.886	6.920	5.931	6.885	10.000	10.000	10.000	10.000	10.000	10.000	10.000	10.000	10.000	10.000	10.000	10.000	10.000	10.000	10.000	10.000	10.000	10.000	10.000	10.000	10.000	
Houston Pilots D - 37/38	10.000	10.000	10.000	10.000	10.000	10.000	10.000	10.000	10.000	10.000	10.000	10.000	8.988	6.920	6.920	7.954	6.610	6.519	6.920	5.983	6.885	10.000	10.000	10.000	10.000	10.000	10.000	10.000	10.000	10.000	10.000	10.000	10.000	10.000	10.000	10.000	10.000	10.000	10.000	10.000	10.000	10.000	10.000
Houston Pilots C - 25/26	10.000	10.000	10.000	10.000	10.000	10.000	10.000	10.000	10.000	10.000	10.000	10.000	8.988	6.967	6.967	8.988	7.712	6.846	6.920	6.911	6.885	10.000	10.000	10.000	10.000	10.000	10.000	10.000	10.000	10.000	10.000	10.000	10.000	10.000	10.000	10.000	10.000	10.000	10.000	10.000	10.000	10.000	10.000
Houston Pilots B - 11/12	10.000	10.000	10.000	10.000	10.000	10.000	10.000	10.000	10.000	10.000	10.000	10.000	8.988	6.967	6.967	8.988	8.033	7.159	6.920	6.911	6.885	10.000	10.000	10.000	10.000	10.000	10.000	10.000	10.000	10.000	10.000	10.000	10.000	10.000	10.000	10.000	10.000	10.000	10.000	10.000	10.000	10.000	10.000
Houston Pilots A - 1 & 2 Bravo	10.000	10.000	10.000	10.000	10.000	10.000	10.000	10.000	10.000	10.000	10.000	10.000	8.988	6.920	6.920	8.988	8.033	8.033	8.033	6.791	6.791	8.273	9.548	9.548	9.289	9.583	9.583	9.583	9.553	9.553	9.808	9.808	9.765	9.553	9.548	9.548							

Houston Pilots Wind Report



Example

Sustained wind 13 Knots
Gusts 18 Knots
Wind from the N

WS: 13
G:18
N

Time Knots	11-06-2022 Sun 12pm	11-06-2022 Sun 1pm	11-06-2022 Sun 2pm	11-06-2022 Sun 3pm	11-06-2022 Sun 4pm	11-06-2022 Sun 5pm	11-06-2022 Sun 6pm	11-06-2022 Sun 7pm	11-06-2022 Sun 8pm	11-06-2022 Sun 9pm	11-06-2022 Sun 10pm	11-06-2022 Sun 11pm	11-07-2022 Mon 12am	11-07-2022 Mon 1am	11-07-2022 Mon 2am	11-07-2022 Mon 3am	11-07-2022 Mon 4am	11-07-2022 Mon 5am	11-07-2022 Mon 6am	11-07-2022 Mon 7am	11-07-2022 Mon 8am	11-07-2022 Mon 9am	11-07-2022 Mon 10am	11-07-2022 Mon 11am	11-07-2022 Mon 12pm	11-07-2022 Mon 1pm	11-07-2022 Mon 2pm	11-07-2022 Mon 3pm	11-07-2022 Mon 4pm	11-07-2022 Mon 5pm	11-07-2022 Mon 6pm	11-07-2022 Mon 7pm	11-07-2022 Mon 8pm	11-07-2022 Mon 9pm	11-07-2022 Mon 10pm	11-07-2022 Mon 11pm					
Houston Pilots N - 610 Bridge	WS: 7 G:12 SSE	WS: 5 G:15 SSW	WS: 9 G:15 SSW	WS: 8 G:14 SSW	WS: 7 G:13 SSW	WS: 6 G:13 S	WS: 5 G:13 S	WS: 5 G:13 SSE	WS: 4 G:11 SSE	WS: 4 G:10 SE	WS: 4 G:10 SE	WS: 3 G:10 SE	WS: 3 G:9 SE	WS: 2 G:9 SE	WS: 2 G:8 ESE	WS: 3 G:5 ESE	WS: 3 G:4 ESE	WS: 3 G:5 ESE	WS: 3 G:4 E	WS: 3 G:15 E	WS: 3 G:17 E	WS: 4 G:18 ESE	WS: 5 G:18 ESE	WS: 6 G:18 ESE	WS: 6 G:18 ESE	WS: 7 G:18 ESE	WS: 7 G:18 ESE	WS: 8 G:18 ESE	WS: 7 G:18 ESE	WS: 7 G:18 ESE	WS: 7 G:18 ESE	WS: 6 G:18 ESE	WS: 5 G:18 ESE	WS: 4 G:18 ESE	WS: 4 G:18 ESE	WS: 3 G:18 ESE	WS: 3 G:18 ESE				
Houston Pilots M - Kinder 1	WS: 6 G:12 SSE	WS: 4 G:14 SSW	WS: 8 G:15 S	WS: 7 G:13 SSW	WS: 7 G:13 S	WS: 6 G:13 S	WS: 5 G:13 S	WS: 5 G:13 SSE	WS: 4 G:11 SSE	WS: 4 G:10 SE	WS: 4 G:12 SE	WS: 4 G:12 SE	WS: 4 G:10 SE	WS: 3 G:10 SE	WS: 2 G:9 SE	WS: 2 G:9 ESE	WS: 3 G:5 ESE	WS: 3 G:4 ESE	WS: 3 G:5 ESE	WS: 3 G:4 E	WS: 3 G:5 E	WS: 4 G:7 E	WS: 5 G:8 ESE	WS: 6 G:8 ESE	WS: 6 G:9 ESE	WS: 7 G:10 ESE	WS: 8 G:10 ESE	WS: 8 G:11 ESE	WS: 7 G:10 ESE	WS: 7 G:10 ESE	WS: 7 G:10 ESE	WS: 6 G:9 ESE	WS: 5 G:8 ESE	WS: 4 G:7 ESE	WS: 3 G:7 ESE	WS: 3 G:7 ESE	WS: 3 G:6 E				
Houston Pilots L - Greens Bayou	WS: 6 G:12 SE	WS: 4 G:13 S	WS: 7 G:15 S	WS: 6 G:13 S	WS: 6 G:13 S	WS: 5 G:13 SSE	WS: 5 G:14 SSE	WS: 4 G:11 SSE	WS: 4 G:10 SE	WS: 5 G:12 SE	WS: 4 G:12 SE	WS: 4 G:11 SE	WS: 4 G:10 SE	WS: 3 G:10 SE	WS: 2 G:9 ESE	WS: 3 G:5 ESE	WS: 3 G:4 ESE	WS: 3 G:5 ESE	WS: 3 G:4 E	WS: 3 G:5 E	WS: 4 G:7 E	WS: 5 G:8 ESE	WS: 6 G:8 ESE	WS: 6 G:9 ESE	WS: 7 G:10 ESE	WS: 8 G:10 ESE	WS: 8 G:10 ESE	WS: 7 G:10 ESE	WS: 7 G:10 ESE	WS: 7 G:10 ESE	WS: 6 G:8 ESE	WS: 5 G:7 ESE	WS: 4 G:7 ESE	WS: 3 G:6 ESE	WS: 3 G:6 ESE	WS: 3 G:5 E					
Houston Pilots K - Shell Crude	WS: 6 G:14 SE	WS: 5 G:13 S	WS: 7 G:15 S	WS: 7 G:14 S	WS: 7 G:14 SSE	WS: 6 G:14 SSE	WS: 6 G:14 SSE	WS: 5 G:12 SSE	WS: 4 G:10 SE	WS: 4 G:11 SE	WS: 5 G:12 SE	WS: 4 G:11 SE	WS: 4 G:10 SE	WS: 3 G:10 SE	WS: 3 G:9 ESE	WS: 3 G:9 ESE	WS: 2 G:5 ESE	WS: 2 G:4 ESE	WS: 3 G:5 ESE	WS: 3 G:4 E	WS: 3 G:5 E	WS: 4 G:7 E	WS: 5 G:8 ESE	WS: 6 G:8 ESE	WS: 6 G:9 ESE	WS: 7 G:10 ESE	WS: 8 G:10 ESE	WS: 8 G:10 ESE	WS: 7 G:10 ESE	WS: 7 G:10 ESE	WS: 6 G:9 ESE	WS: 5 G:8 ESE	WS: 4 G:7 ESE	WS: 4 G:7 ESE	WS: 3 G:6 ESE	WS: 3 G:6 ESE	WS: 3 G:5 E				
Houston Pilots J - Lynchburg Ferries	WS: 6 G:15 SE	WS: 7 G:14 SSE	WS: 8 G:16 S	WS: 7 G:14 S	WS: 7 G:14 SSE	WS: 6 G:14 SSE	WS: 6 G:14 SSE	WS: 5 G:12 SSE	WS: 4 G:11 SSE	WS: 5 G:12 SE	WS: 6 G:11 SE	WS: 4 G:11 SE	WS: 3 G:10 SE	WS: 3 G:9 ESE	WS: 3 G:8 ESE	WS: 3 G:5 ESE	WS: 3 G:4 ESE	WS: 3 G:5 ESE	WS: 3 G:4 E	WS: 3 G:5 E	WS: 4 G:7 E	WS: 5 G:8 ESE	WS: 6 G:8 ESE	WS: 6 G:9 ESE	WS: 7 G:10 ESE	WS: 7 G:9 ESE	WS: 8 G:9 ESE	WS: 7 G:9 ESE	WS: 7 G:9 ESE	WS: 7 G:9 ESE	WS: 5 G:8 ESE	WS: 4 G:7 ESE	WS: 4 G:6 ESE	WS: 3 G:6 ESE	WS: 3 G:6 ESE	WS: 3 G:5 E					
Houston Pilots I - Exxon 3	WS: 7 G:16 SSE	WS: 8 G:16 SSE	WS: 9 G:16 SSE	WS: 8 G:15 SSE	WS: 8 G:15 SSE	WS: 7 G:15 SSE	WS: 6 G:15 SSE	WS: 5 G:14 SSE	WS: 4 G:11 SSE	WS: 5 G:12 SSE	WS: 6 G:12 SSE	WS: 5 G:12 SSE	WS: 4 G:11 SSE	WS: 3 G:10 SSE	WS: 3 G:8 SSE	WS: 3 G:5 SSE	WS: 3 G:4 SSE	WS: 3 G:5 SSE	WS: 4 G:6 SSE	WS: 4 G:6 SSE	WS: 5 G:7 SSE	WS: 6 G:8 SSE	WS: 7 G:9 SSE	WS: 7 G:9 SSE	WS: 7 G:9 SSE	WS: 8 G:9 SSE	WS: 8 G:9 SSE	WS: 7 G:9 SSE	WS: 7 G:9 SSE	WS: 6 G:8 SSE	WS: 5 G:7 SSE	WS: 4 G:6 SSE	WS: 3 G:5 SSE	WS: 3 G:5 SSE	WS: 3 G:4 SSE	WS: 3 G:4 SSE					
Houston Pilots H - Morgans Point	WS: 8 G:15 SSE	WS: 9 G:16 SSE	WS: 10 G:17 SSE	WS: 9 G:16 SSE	WS: 9 G:16 SSE	WS: 8 G:15 SSE	WS: 8 G:15 SSE	WS: 7 G:14 SSE	WS: 6 G:12 SSE	WS: 6 G:12 SSE	WS: 6 G:12 SSE	WS: 6 G:11 SSE	WS: 5 G:10 SSE	WS: 4 G:9 SSE	WS: 3 G:8 SSE	WS: 4 G:6 SSE	WS: 4 G:6 SSE	WS: 4 G:6 SSE	WS: 4 G:6 SSE	WS: 4 G:6 SSE	WS: 4 G:6 SSE	WS: 5 G:7 SSE	WS: 6 G:8 SSE	WS: 7 G:9 SSE	WS: 7 G:9 SSE	WS: 7 G:9 SSE	WS: 8 G:9 SSE	WS: 8 G:9 SSE	WS: 7 G:9 SSE	WS: 7 G:9 SSE	WS: 6 G:8 SSE	WS: 5 G:7 SSE	WS: 5 G:7 SSE	WS: 4 G:6 SSE	WS: 4 G:6 SSE	WS: 4 G:5 SSE	WS: 4 G:5 SSE				
Houston Pilots G - 75/76	WS: 8 G:15 SSE	WS: 10 G:16 SSE	WS: 11 G:17 SSE	WS: 10 G:16 SSE	WS: 10 G:16 SSE	WS: 9 G:15 SSE	WS: 8 G:15 SSE	WS: 8 G:15 SSE	WS: 7 G:14 SSE	WS: 7 G:14 SSE	WS: 7 G:14 SSE	WS: 7 G:13 SSE	WS: 6 G:12 SSE	WS: 5 G:11 SSE	WS: 5 G:10 SSE	WS: 5 G:7 SSE	WS: 5 G:7 SSE	WS: 5 G:7 SSE	WS: 5 G:7 SSE	WS: 5 G:7 SSE	WS: 6 G:8 SSE	WS: 7 G:9 SSE	WS: 7 G:9 SSE	WS: 7 G:10 SSE	WS: 7 G:10 SSE	WS: 8 G:10 SSE	WS: 8 G:10 SSE	WS: 8 G:11 SSE	WS: 8 G:10 SSE	WS: 8 G:10 SSE	WS: 7 G:9 SSE	WS: 6 G:8 SSE	WS: 6 G:8 SSE	WS: 6 G:8 SSE	WS: 6 G:8 SSE	WS: 5 G:7 SSE	WS: 5 G:7 SSE				
Houston Pilots F - 83/64	WS: 9 G:15 SSE	WS: 10 G:16 SSE	WS: 11 G:17 SSE	WS: 11 G:17 SSE	WS: 10 G:16 SSE	WS: 10 G:15 SSE	WS: 9 G:15 SSE	WS: 8 G:14 SSE	WS: 7 G:12 SSE	WS: 8 G:14 SSE	WS: 8 G:15 SSE	WS: 7 G:13 SSE	WS: 6 G:12 SSE	WS: 5 G:11 SSE	WS: 5 G:10 SSE	WS: 6 G:8 SSE	WS: 5 G:7 SSE	WS: 5 G:7 SSE	WS: 6 G:8 SSE	WS: 6 G:8 SSE	WS: 6 G:8 SSE	WS: 7 G:9 SSE	WS: 8 G:9 SSE	WS: 8 G:10 SSE	WS: 8 G:10 SSE	WS: 8 G:11 SSE	WS: 8 G:11 SSE	WS: 8 G:11 SSE	WS: 8 G:11 SSE	WS: 8 G:11 SSE	WS: 7 G:10 SSE	WS: 6 G:9 SSE	WS: 6 G:9 SSE	WS: 6 G:8 SSE	WS: 6 G:8 SSE	WS: 6 G:8 SSE	WS: 6 G:8 SSE				
Houston Pilots E - 51/52	WS: 8 G:15 SSE	WS: 10 G:16 SSE	WS: 11 G:17 SSE	WS: 11 G:17 SSE	WS: 10 G:16 SSE	WS: 9 G:15 SSE	WS: 8 G:15 SSE	WS: 7 G:14 SSE	WS: 6 G:12 SSE	WS: 7 G:14 SSE	WS: 8 G:15 SSE	WS: 8 G:15 SSE	WS: 7 G:13 SSE	WS: 6 G:12 SSE	WS: 5 G:11 SSE	WS: 6 G:8 SSE	WS: 6 G:8 SSE	WS: 6 G:8 SSE	WS: 6 G:8 SSE	WS: 6 G:8 SSE	WS: 6 G:8 SSE	WS: 7 G:9 SSE	WS: 8 G:9 SSE	WS: 8 G:10 SSE	WS: 8 G:10 SSE	WS: 8 G:11 SSE	WS: 8 G:11 SSE	WS: 8 G:11 SSE	WS: 8 G:11 SSE	WS: 8 G:11 SSE	WS: 8 G:11 SSE	WS: 8 G:11 SSE	WS: 7 G:10 SSE	WS: 6 G:9 SSE	WS: 6 G:9 SSE	WS: 6 G:8 SSE	WS: 6 G:8 SSE	WS: 6 G:8 SSE	WS: 6 G:8 SSE		
Houston Pilots D - 37/38	WS: 9 G:15 SSE	WS: 9 G:15 S	WS: 10 G:16 S	WS: 10 G:16 S	WS: 10 G:15 SSE	WS: 9 G:13 SSE	WS: 8 G:13 SSE	WS: 7 G:11 SSE	WS: 6 G:11 SSE	WS: 7 G:12 SSE	WS: 7 G:14 SSE	WS: 8 G:14 SSE	WS: 8 G:14 SSE	WS: 6 G:12 SSE	WS: 6 G:11 SSE	WS: 5 G:10 SSE	WS: 6 G:8 SSE	WS: 6 G:8 SSE	WS: 6 G:8 SSE	WS: 6 G:8 SSE	WS: 6 G:8 SSE	WS: 7 G:9 SSE	WS: 8 G:9 SSE	WS: 8 G:10 SSE	WS: 8 G:10 SSE	WS: 8 G:11 SSE	WS: 8 G:11 SSE	WS: 8 G:11 SSE	WS: 8 G:11 SSE	WS: 8 G:11 SSE	WS: 8 G:11 SSE	WS: 8 G:11 SSE	WS: 8 G:11 SSE	WS: 8 G:11 SSE	WS: 7 G:10 SSE	WS: 6 G:9 SSE	WS: 6 G:9 SSE	WS: 6 G:8 SSE	WS: 6 G:8 SSE	WS: 6 G:8 SSE	
Houston Pilots C - 25/26	WS: 9 G:15 SSE	WS: 8 G:14 S	WS: 9 G:15 S	WS: 10 G:16 SSE	WS: 9 G:15 SSE	WS: 8 G:13 SSE	WS: 7 G:13 SSE	WS: 6 G:11 SSE	WS: 6 G:11 SSE	WS: 7 G:12 SSE	WS: 7 G:14 SSE	WS: 8 G:14 SSE	WS: 8 G:14 SSE	WS: 6 G:12 SSE	WS: 6 G:11 SSE	WS: 5 G:10 SSE	WS: 6 G:8 SSE	WS: 5 G:7 SSE	WS: 5 G:7 SSE	WS: 6 G:8 SSE	WS: 6 G:8 SSE	WS: 7 G:9 SSE	WS: 8 G:9 SSE	WS: 8 G:10 SSE	WS: 8 G:10 SSE	WS: 8 G:11 SSE	WS: 8 G:11 SSE	WS: 8 G:11 SSE	WS: 8 G:11 SSE	WS: 8 G:11 SSE	WS: 8 G:11 SSE	WS: 8 G:11 SSE	WS: 8 G:11 SSE	WS: 8 G:11 SSE	WS: 8 G:11 SSE	WS: 8 G:11 SSE	WS: 7 G:10 SSE	WS: 6 G:9 SSE	WS: 6 G:9 SSE	WS: 6 G:8 SSE	WS: 6 G:8 SSE
Houston Pilots B - 11/12	WS: 8 G:14 SSE	WS: 6 G:14 SSE	WS: 7 G:15 SSE	WS: 8 G:14 SSE	WS: 8 G:14 SSE	WS: 7 G:13 SSE	WS: 6 G:12 SSE	WS: 5 G:11 SSE	WS: 4 G:10 SSE	WS: 5 G:12 SSE	WS: 6 G:14 SSE	WS: 7 G:14 SSE	WS: 8 G:14 SSE	WS: 8 G:14 SSE	WS: 6 G:12 SSE	WS: 5 G:11 SSE	WS: 6 G:8 SSE	WS: 6 G:8 SSE	WS: 6 G:8 SSE	WS: 6 G:8 SSE	WS: 6 G:8 SSE	WS: 7 G:9 SSE	WS: 8 G:9 SSE	WS: 8 G:10 SSE	WS: 8 G:10 SSE	WS: 8 G:11 SSE	WS: 8 G:11 SSE	WS: 8 G:11 SSE	WS: 8 G:11 SSE	WS: 8 G:11 SSE	WS: 8 G:11 SSE	WS: 8 G:11 SSE	WS: 8 G:11 SSE	WS: 8 G:11 SSE	WS: 8 G:11 SSE	WS: 8 G:11 SSE	WS: 8 G:11 SSE	WS: 8 G:11 SSE	WS: 8 G:11 SSE	WS: 8 G:11 SSE	
Houston Pilots A - 1 & 2 Bravo	WS: 7 G:12 SE	WS: 5 G:11 SSE	WS: 6 G:12 SSE	WS: 7 G:12 SSE	WS: 8 G:13 SSE	WS: 9 G:13 SE	WS: 9 G:14 SE	WS: 8 G:13 SE	WS: 7 G:12 SE	WS: 9 G:14 SE	WS: 9 G:15 SE	WS: 9 G:15 SE	WS: 9 G:15 SE	WS: 7 G:13 SE	WS: 7 G:13 SE	WS: 5 G:11 SE	WS: 6 G:8 SE	WS: 6 G:8 SE	WS: 6 G:8 SE	WS: 6 G:8 SE	WS: 6 G:8 SE	WS: 7 G:9 SE	WS: 8 G:9 SE	WS: 9 G:10 SE	WS: 9 G:10 SE	WS: 9 G:10 SE	WS: 10 G:10 SE	WS: 10 G:10 SE	WS: 10 G:10 SE	WS: 10 G:10 SE	WS: 10 G:10 SE	WS: 10 G:10 SE	WS: 10 G:10 SE	WS: 10 G:10 SE	WS: 10 G:10 SE	WS: 10 G:10 SE	WS: 10 G:10 SE	WS: 10 G:10 SE	WS: 10 G:10 SE		

See slides below for official thoughts on winds.

Houston Pilots: Sun. 11/6/2022



Forecast Discussion

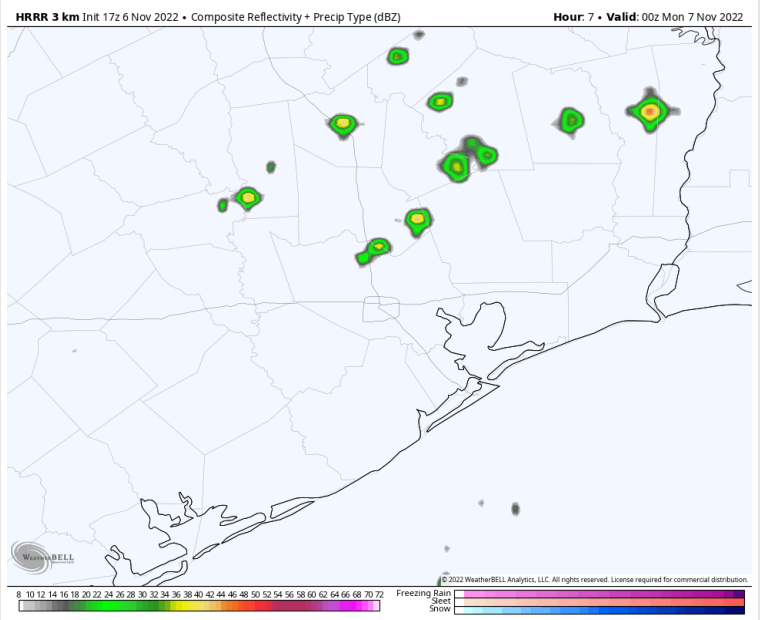
Precip: Anticipating a 20-30% chance of scattered showers to continue until 7 PM-CST today. Dry conditions expected beyond 7 PM.

Wind: Sustained winds out of the SE for the rest of the day. After 2 PM-CST, winds at all stations pick up to 7-12 kts until 6 PM-CST. After 6 PM-CST winds N of Morgan's Point drop back down to 3-7 kts for the rest of the day.

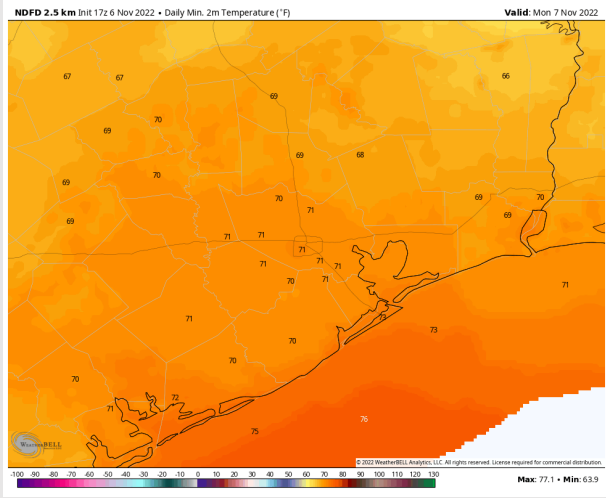
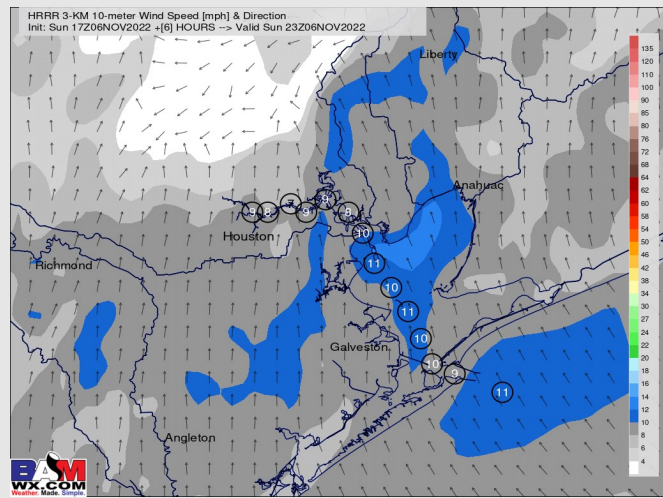
Temps: Low temps Monday morning in the low 70s F for all stations.

Visibility: Not anticipating any visibility concerns at this time.

Precip Forecast: 6 PM-CST



Wind Speed
5 PM-CST



Low Temps
Monday AM

Houston Pilots: Mon. 11/7/2022



Forecast Discussion

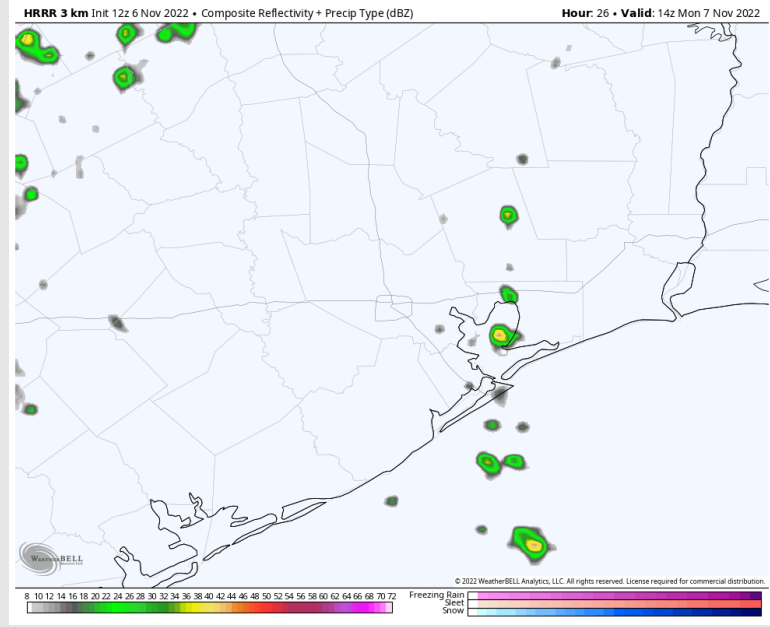
Precip: Anticipating a 20% chance for sporadic showers/storms to begin between 7AM-CST to 1PM-CST. Dry conditions expected after 1PM.

Wind: Sustained winds out of the SE/E throughout the whole day. Winds N of Morgan's Point will be 4-9 kts with winds S of Morgan's point 7-13 kts.

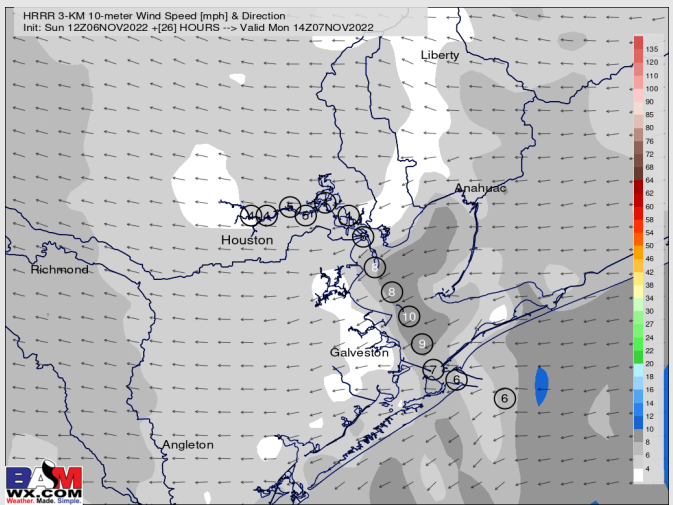
Temps: High temps in the mid 70s F at the boarding station and in the low 80s F at all other stations.

Visibility: Anticipating patchy dense fog Monday AM.

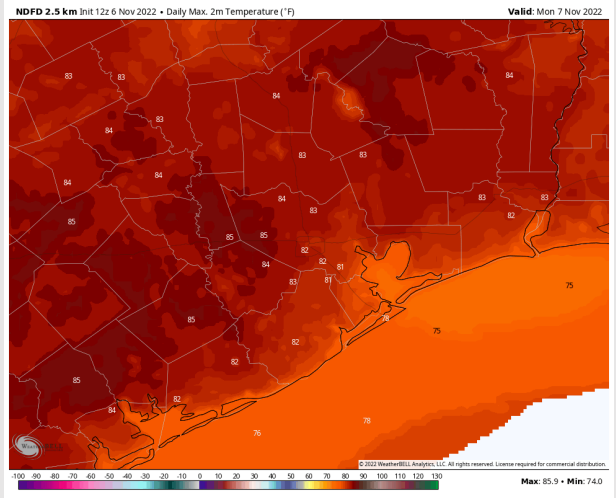
Precip Forecast: 8 AM CST



Wind Speed
8 AM CST



High Temps
Monday



Houston Pilots: Tue. 11/8/2022



Forecast Discussion

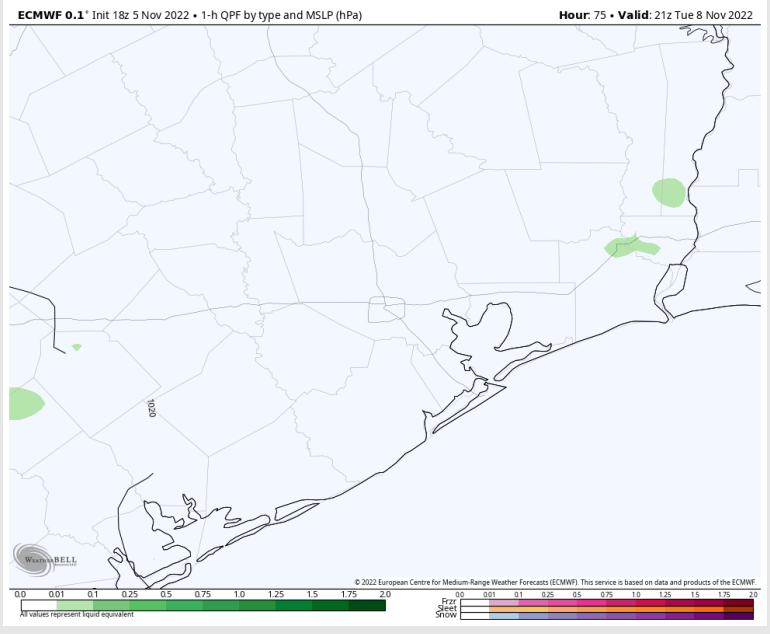
Precip: Favoring mostly dry conditions Tuesday with less than a 10% chance for an isolated shower in the early afternoon.

Wind: Sustained winds out of the east Tuesday 8-12 kts S of Morgan's Point and 4-7 kts N of Morgan's Point. After 9 AM, winds will pick up at all stations to 9-13 kts. Around 5PM, winds N of Morgan's Point will drop back to 4-7 kts and remain there the rest of the day.

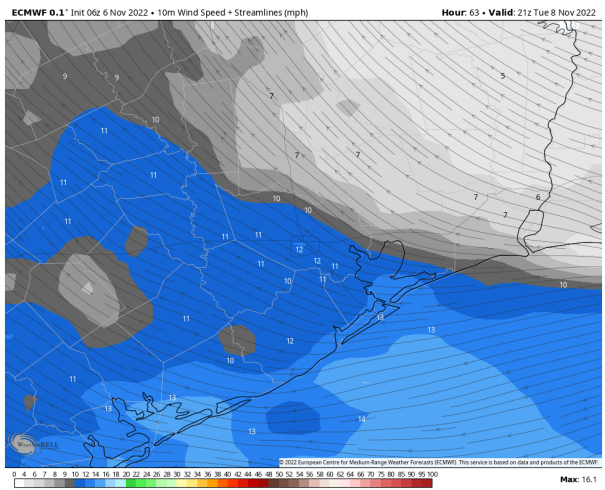
Temps: High temperatures Tuesday in the mid to upper 70s F near the boarding station and in the low 80s F at all other stations.

Visibility: Not anticipating any visibility concerns at this time.

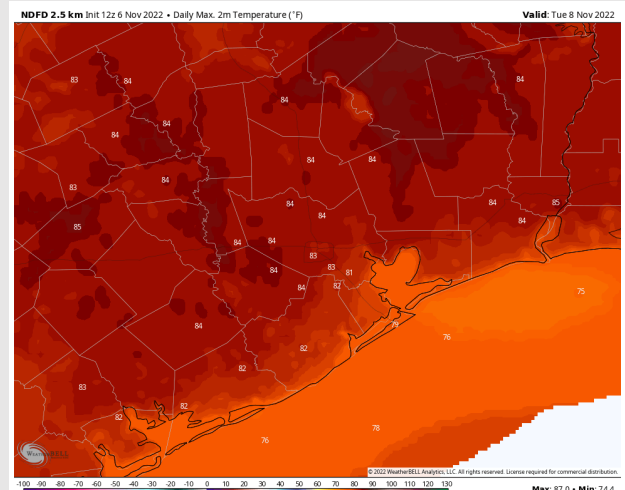
Precip Forecast: 3 PM CST



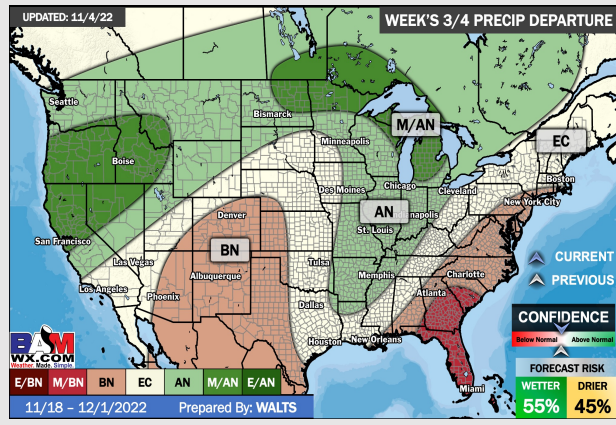
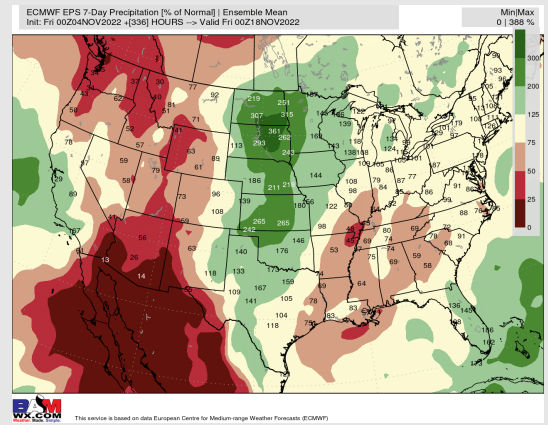
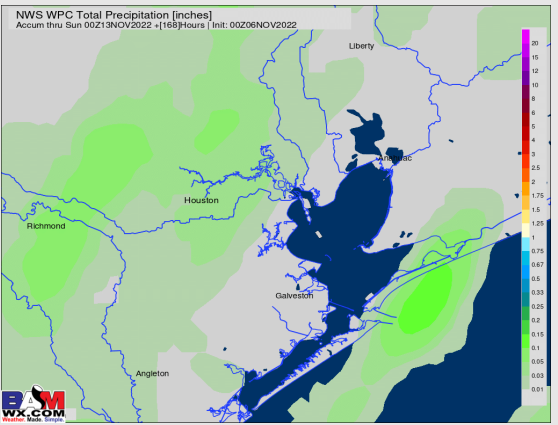
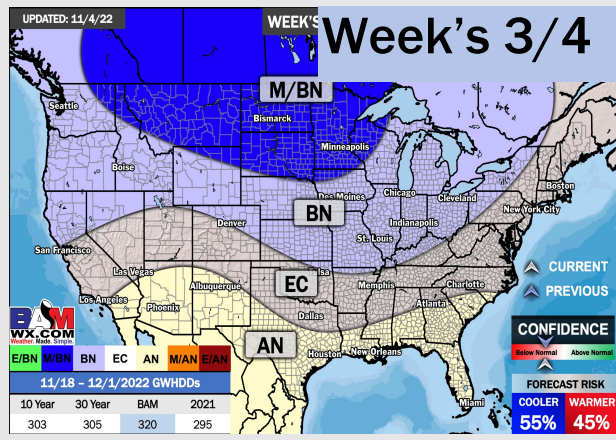
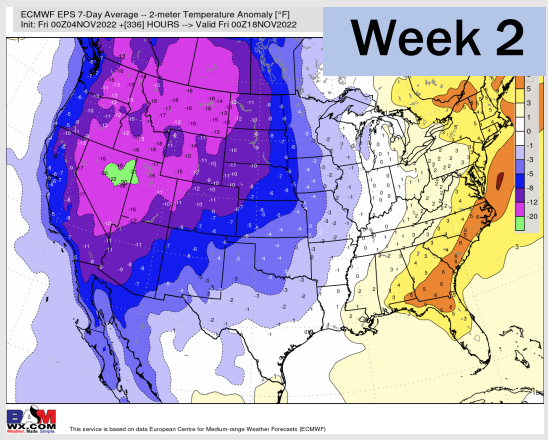
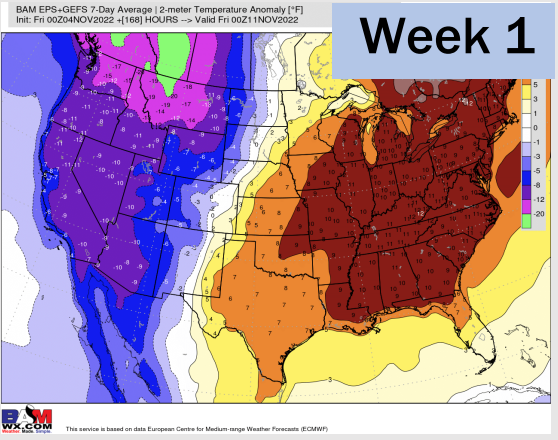
Wind Speed
3 PM CST



High Temps
Tuesday



Houston Pilots: 11/6/22



- Temperatures expected to be above normal next week. More widespread chances of precipitation going into the beginning of the week.
- Week 2 to feature normal temperatures and below normal precipitation.
- The weeks 3/4 timeframe looks to feature above normal temperatures and normal risks for precipitation.