

Houston Pilots Forecast Package



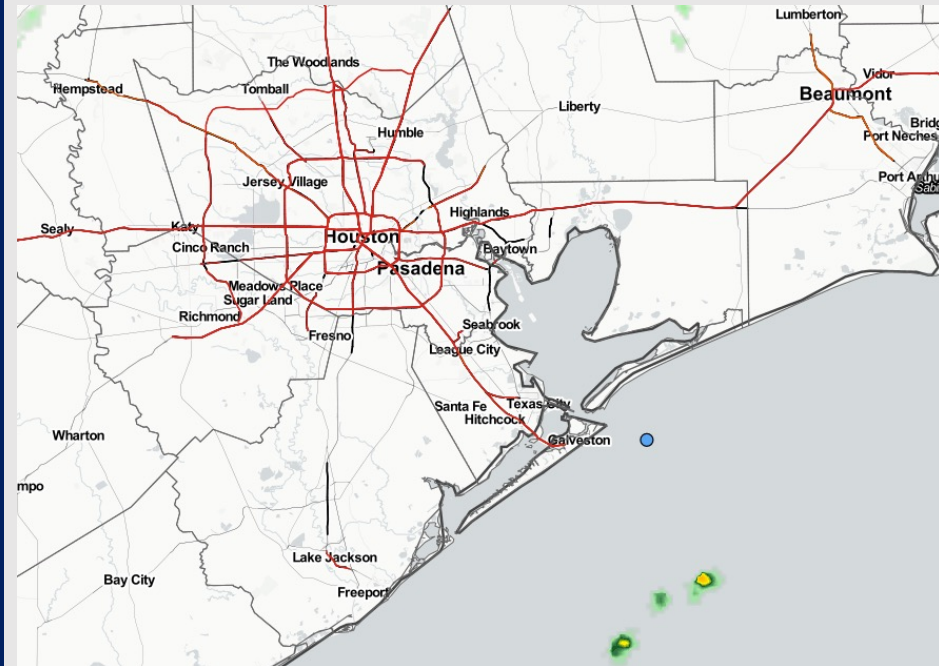
Updated: 7:00 AM CT

Sunday, November 6, 2022

Forecaster: Josh Collins

Weather Headlines

- Anticipating scattered chances for showers/storms over the next few days.
- No direct tropical activity is favored in SE TX over the next 7-10 days.
- Sustained winds will continue to come out of the SE the next couple days.
- Anticipating areas of patchy, dense fog to be possible Monday AM.



Radar/ NWS Alerts: 7:00 AM CT



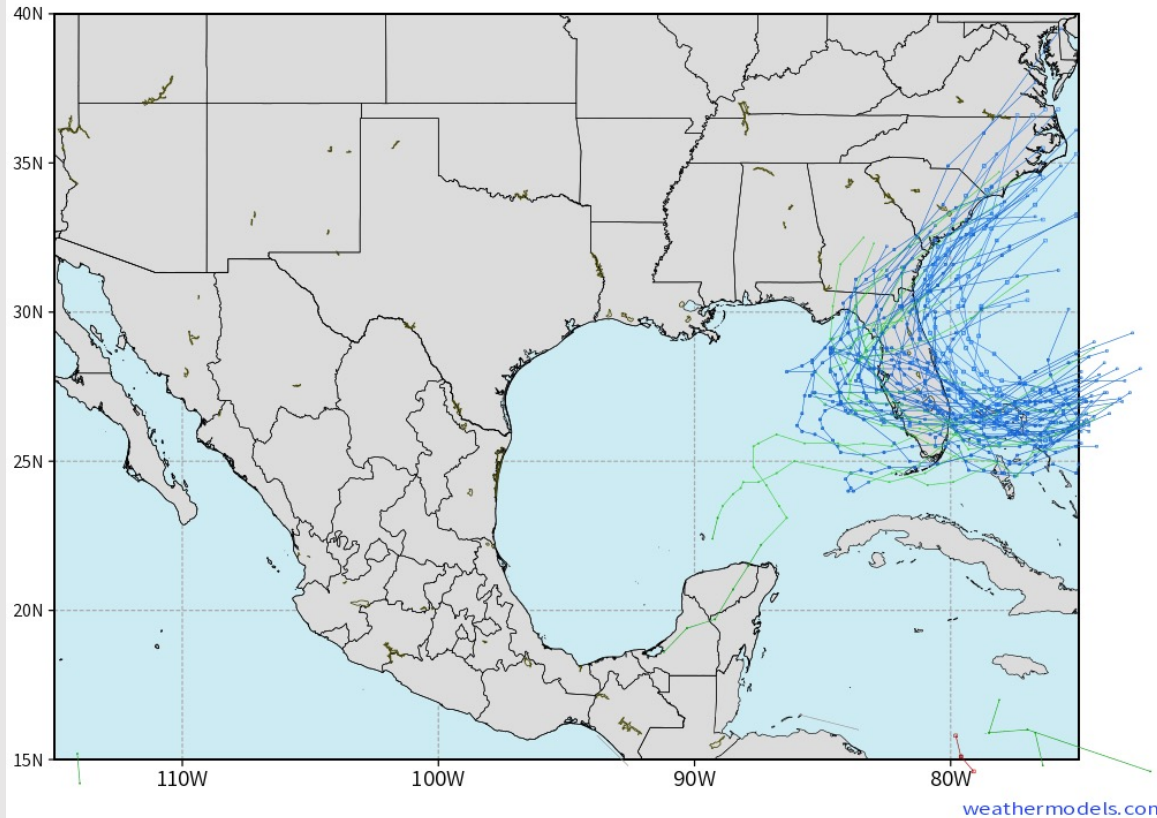
As always, please do not hesitate to reach out to us with any forecast questions via the chat option on the Weather Porthole or our on-call number, **(317)-560-8122** press 1 for forecast questions.

Houston Pilots Extended Range Tropical Report

European Data Tracks Next 10 Days

ECMWF GULF EPS Cyclone Locations --> Next [10-days]
INIT: 00Z06NOV2022 --> UNTIL 00Z16NOV2022

o-o ENSEMBLE MEAN
o-o 1000 - 1010 hPa
o-o 980 - 999 hPa
o-o 960 - 979 hPa
o-o 950 - 959 hPa
o-o < 950 hPa



Monitoring potential tropical development SE of the Bahamas. There are no tropical threats anticipated for SE TX over the next 7-10 days.

Confidence

Above
Normal

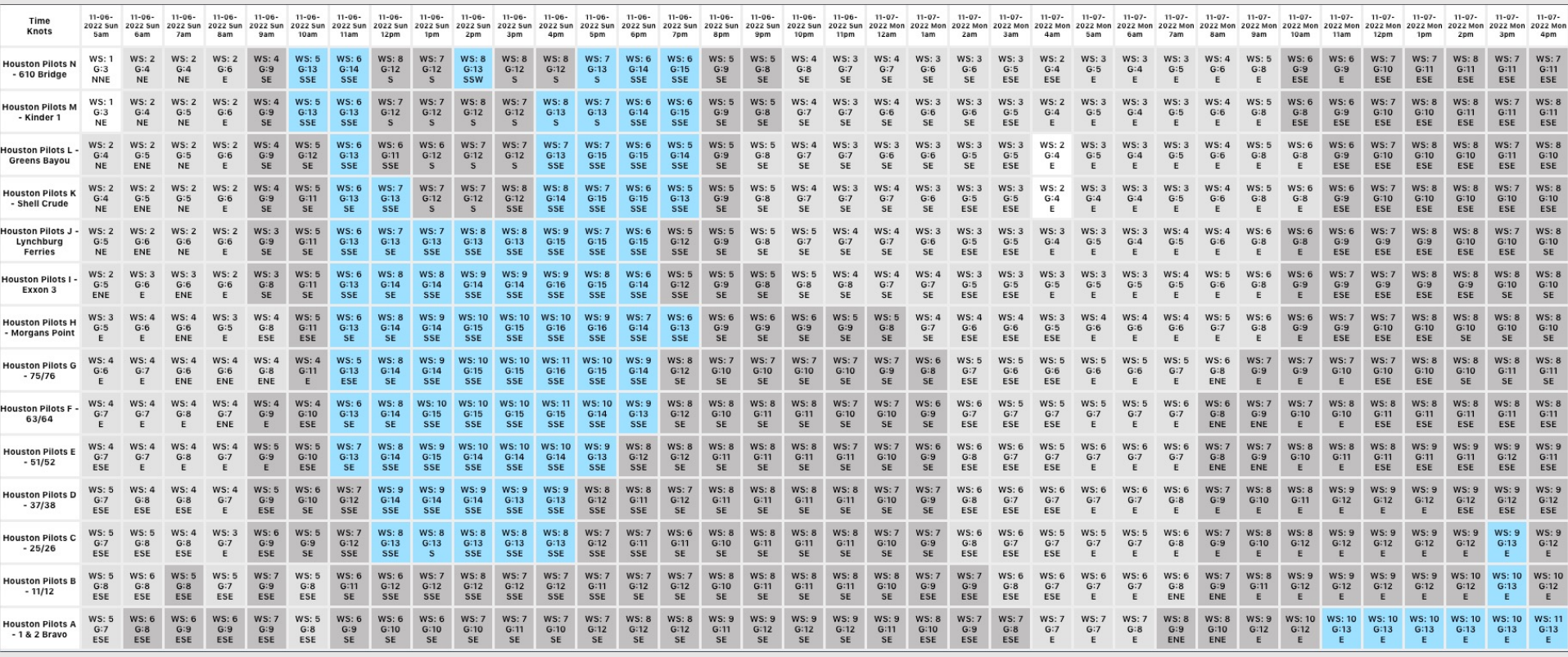
Below
Normal

Houston Pilots Visibility Report



Time	11-06-2022 Sun 5am	11-06-2022 Sun 6am	11-06-2022 Sun 7am	11-06-2022 Sun 8am	11-06-2022 Sun 9am	11-06-2022 Sun 10am	11-06-2022 Sun 11am	11-06-2022 Sun 12pm	11-06-2022 Sun 1pm	11-06-2022 Sun 2pm	11-06-2022 Sun 3pm	11-06-2022 Sun 4pm	11-06-2022 Sun 5pm	11-06-2022 Sun 6pm	11-06-2022 Sun 7pm	11-06-2022 Sun 8pm	11-06-2022 Sun 9pm	11-06-2022 Sun 10pm	11-06-2022 Sun 11pm	11-07-2022 Mon 12am	11-07-2022 Mon 1am	11-07-2022 Mon 2am	11-07-2022 Mon 3am	11-07-2022 Mon 4am	11-07-2022 Mon 5am	11-07-2022 Mon 6am	11-07-2022 Mon 7am	11-07-2022 Mon 8am	11-07-2022 Mon 9am	11-07-2022 Mon 10am	11-07-2022 Mon 11am	11-07-2022 Mon 12pm	11-07-2022 Mon 1pm	11-07-2022 Mon 2pm	11-07-2022 Mon 3pm	11-07-2022 Mon 4pm	
Houston Pilots N - 610 Bridge	10.000	10.000	10.000	10.000	10.000	10.000	10.000	10.000	10.000	10.000	10.000	10.000	10.000	10.000	10.000	10.000	10.000	10.000	10.000	7.954	6.955	4.931	4.931	3.897	3.897	3.897	3.897	5.392	10.000	10.000	10.000	10.000	10.000	10.000	10.000	10.000	10.000
Houston Pilots M - Kinder 1	10.000	10.000	10.000	10.000	10.000	10.000	10.000	10.000	10.000	10.000	10.000	10.000	10.000	10.000	10.000	10.000	10.000	10.000	10.000	7.954	6.955	5.745	4.983	4.279	4.215	3.897	3.897	5.392	10.000	10.000	10.000	10.000	10.000	10.000	10.000	10.000	10.000
Houston Pilots L - Greens Bayou	10.000	10.000	9.038	10.000	10.000	10.000	10.000	10.000	10.000	10.000	10.000	10.000	10.000	10.000	10.000	10.000	10.000	10.000	10.000	7.954	7.146	6.752	6.325	5.930	5.930	4.315	3.385	4.897	10.000	10.000	10.000	10.000	10.000	10.000	10.000	10.000	10.000
Houston Pilots K - Shell Crude	10.000	10.000	9.161	10.000	10.000	10.000	10.000	10.000	10.000	10.000	10.000	10.000	10.000	10.000	10.000	10.000	10.000	10.000	10.000	8.033	8.033	8.033	8.033	8.033	8.033	4.315	3.385	4.897	10.000	10.000	10.000	10.000	10.000	10.000	10.000	10.000	10.000
Houston Pilots J - Lynchburg Ferries	10.000	10.000	9.038	10.000	10.000	10.000	10.000	10.000	10.000	10.000	10.000	10.000	10.000	10.000	10.000	10.000	10.000	10.000	8.988	8.033	8.033	8.033	8.033	8.033	8.033	4.315	2.943	4.897	10.000	10.000	10.000	10.000	10.000	10.000	10.000	10.000	10.000
Houston Pilots I - Exxon 3	10.000	10.000	8.280	10.000	10.000	10.000	10.000	10.000	10.000	10.000	10.000	10.000	10.000	10.000	10.000	10.000	10.000	10.000	9.390	8.033	8.033	8.033	8.033	8.033	8.033	4.315	2.943	4.897	10.000	10.000	10.000	10.000	10.000	10.000	10.000	10.000	10.000
Houston Pilots H - Morgans Point	10.000	10.000	9.038	10.000	10.000	10.000	10.000	10.000	10.000	10.000	10.000	10.000	10.000	10.000	10.000	10.000	10.000	10.000	9.390	8.033	8.033	8.033	8.033	8.033	8.033	4.789	3.418	4.897	10.000	10.000	10.000	10.000	10.000	10.000	10.000	10.000	10.000
Houston Pilots G - 75/76	10.000	10.000	9.038	10.000	10.000	10.000	10.000	10.000	10.000	10.000	10.000	10.000	10.000	10.000	10.000	10.000	10.000	10.000	9.422	9.122	8.033	8.033	8.033	8.033	8.033	5.406	4.931	6.339	10.000	10.000	10.000	10.000	10.000	10.000	10.000	10.000	10.000
Houston Pilots F - 63/64	10.000	10.000	9.038	10.000	10.000	10.000	10.000	10.000	10.000	10.000	10.000	10.000	10.000	10.000	10.000	10.000	10.000	10.000	9.186	8.033	8.033	8.033	8.033	8.033	8.033	6.920	5.886	6.885	10.000	10.000	10.000	10.000	10.000	10.000	10.000	10.000	10.000
Houston Pilots E - 51/52	10.000	10.000	9.038	10.000	10.000	10.000	10.000	10.000	10.000	10.000	10.000	10.000	10.000	10.000	10.000	10.000	10.000	10.000	10.000	8.033	8.033	8.033	8.033	8.033	8.033	6.920	6.489	6.885	10.000	10.000	10.000	10.000	10.000	10.000	10.000	10.000	10.000
Houston Pilots D - 37/38	10.000	10.000	9.370	10.000	10.000	10.000	10.000	10.000	10.000	10.000	10.000	10.000	10.000	10.000	10.000	10.000	10.000	10.000	9.933	8.033	8.033	8.033	7.955	7.993	7.714	6.920	7.409	10.000	10.000	10.000	10.000	10.000	10.000	10.000	10.000	10.000	
Houston Pilots C - 25/26	10.000	10.000	10.000	10.000	10.000	10.000	10.000	10.000	10.000	10.000	10.000	10.000	10.000	10.000	10.000	10.000	10.000	10.000	9.985	8.033	8.033	8.033	8.033	8.033	8.033	7.922	6.920	7.485	10.000	10.000	10.000	10.000	10.000	10.000	10.000	10.000	10.000
Houston Pilots B - 11/12	10.000	10.000	10.000	10.000	10.000	10.000	10.000	10.000	10.000	10.000	10.000	10.000	10.000	10.000	10.000	10.000	10.000	10.000	9.985	8.033	8.033	8.033	8.033	8.033	8.033	7.922	6.920	7.919	10.000	10.000	10.000	10.000	10.000	10.000	10.000	10.000	10.000
Houston Pilots A - 1 & 2 Bravo	10.000	10.000	10.000	10.000	10.000	10.000	10.000	10.000	10.000	10.000	10.000	10.000	10.000	10.000	10.000	10.000	9.583	9.583	9.583	9.583	8.033	8.033	8.033	8.033	8.033	6.673	5.225	7.707	7.953	8.172	9.050	9.548	9.548	9.548	9.548	9.548	

The image contains two logos. On the left is the logo for BAM WX.COM, featuring the letters 'BAM' in a stylized font with a white 'A' and a black and white swirl, followed by 'WX.COM' in black and 'Weather. Made. Simple.' in blue and red. On the right is the logo for Houston Pilots, featuring a large red 'H' with the text 'Houston Pilots' in white.



See slides below for official thoughts on winds.

Houston Pilots: Sun. 11/6/2022

Forecast Discussion

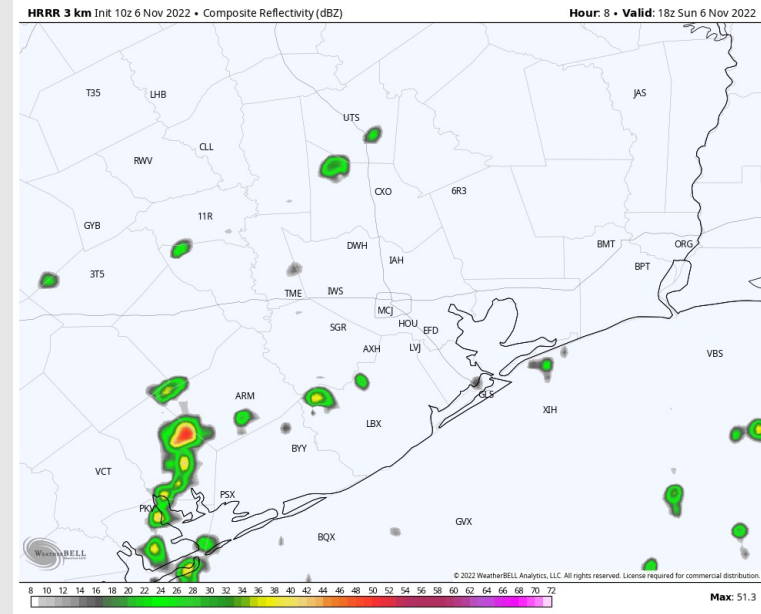
Precip: Anticipating a 20-30% chance of scattered showers to move through the region between 9 AM-CST and 7 PM-CST today. Dry conditions expected beyond 7 PM.

Wind: Sustained winds N of Morgan's Point 3-7 kts, winds S of Morgan's Point 7-12 kts. Starting around 12 PM-CST, winds will shift to out of the SE for the rest of the day. After 2 PM-CST, winds at all stations pick up to 7-12 kts until 6 PM-CST. After 6 PM-CST winds N of Morgan's Point drop back down to 3-7 kts for the rest of the day.

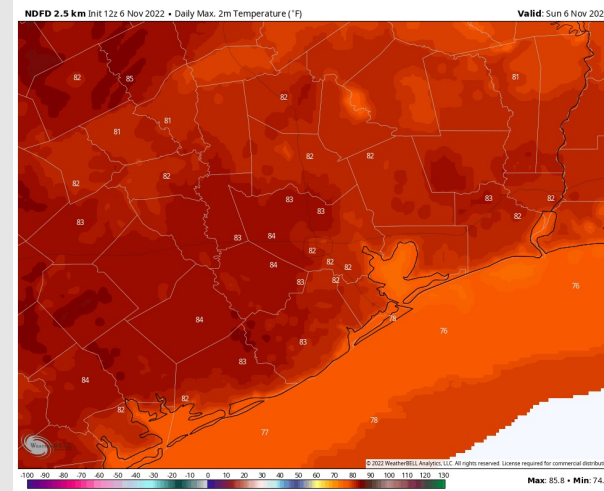
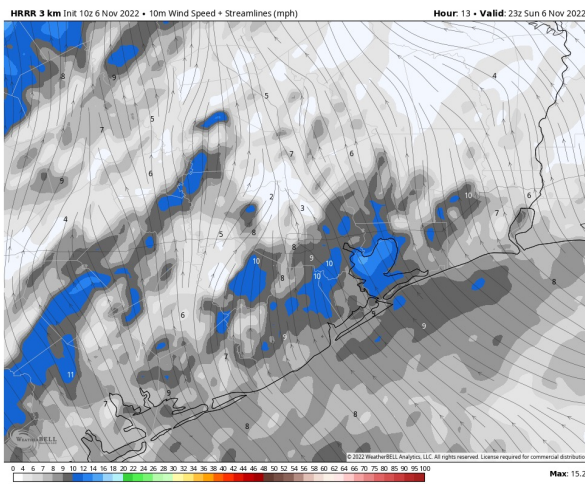
Temps: High temps today in the mid 70s F near the the boarding station and in the upper 70s F to lower 80s F at all other stations.

Visibility: Not anticipating any visibility concerns at this time.

Precip Forecast: 12 PM-CST



Wind Speed
5 PM-CST



High Temps
Today

Houston Pilots: Mon. 11/7/2022

Forecast Discussion

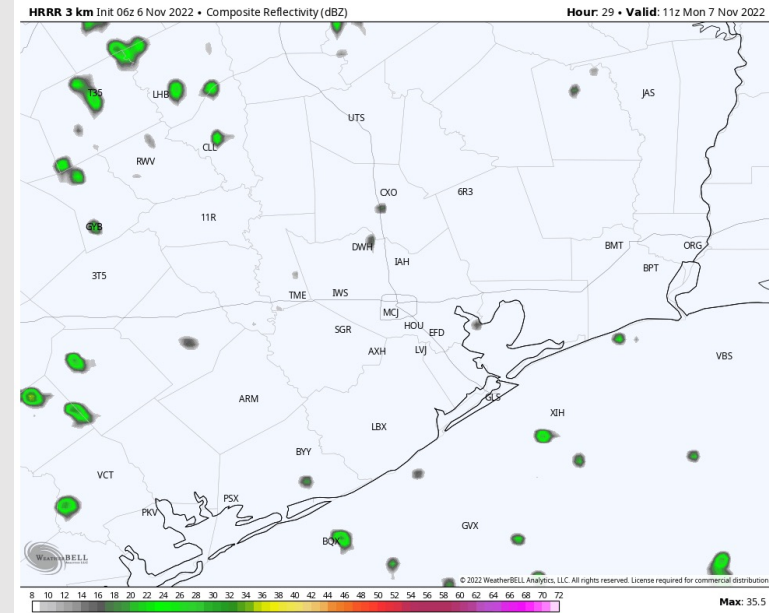
Precip: Anticipating a 20% chance for sporadic showers to begin between 3AM-CST to 2PM-CST. Dry conditions expected after 2PM.

Wind: Sustained winds out of the SE/E throughout the whole day. Winds N of Morgan's Point will be 4-9 kts with winds S of Morgan's point 7-13 kts.

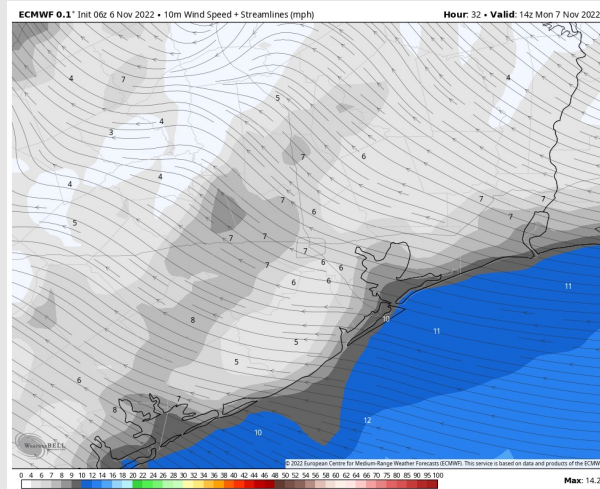
Temps: High temps in the mid 70s F at the boarding station and in the low 80s F at all other stations.

Visibility: Anticipating patchy dense fog Monday AM.

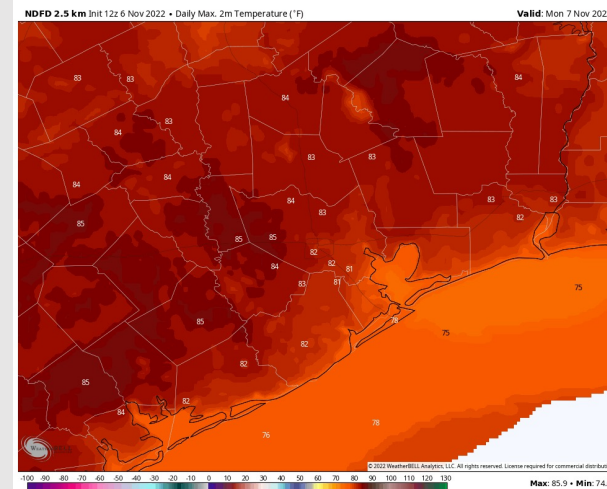
Precip Forecast: 5 AM CST



Wind Speed
8 AM CST



High Temps
Monday



Houston Pilots: Tue. 11/8/2022

Forecast Discussion

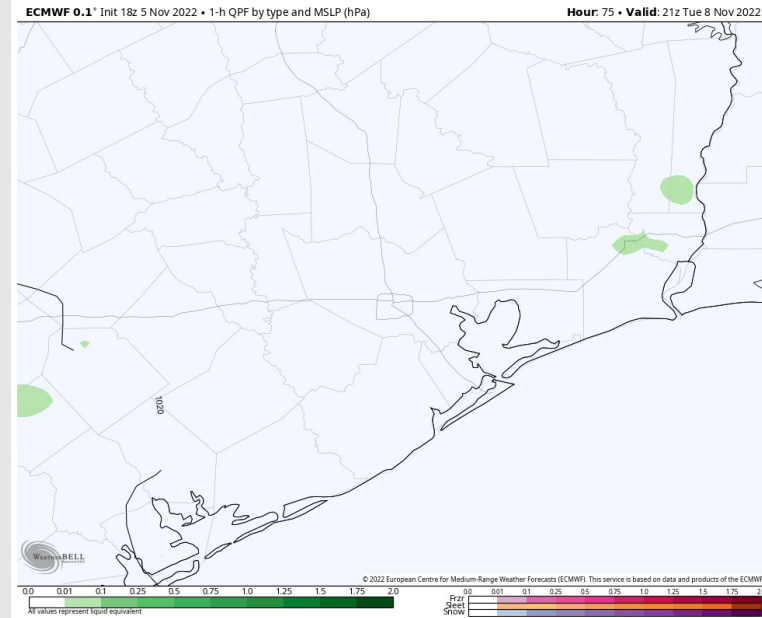
Precip: Favoring mostly dry conditions Tuesday with less than a 10% chance for an isolated shower in the early afternoon.

Wind: Sustained winds out of the east Tuesday 8-12 kts S of Morgan's Point and 4-7 kts N of Morgan's Point. After 9 AM, winds will pick up at all stations to 9-13 kts. Around 5PM, winds N of Morgan's Point will drop back to 4-7 kts and remain there the rest of the day.

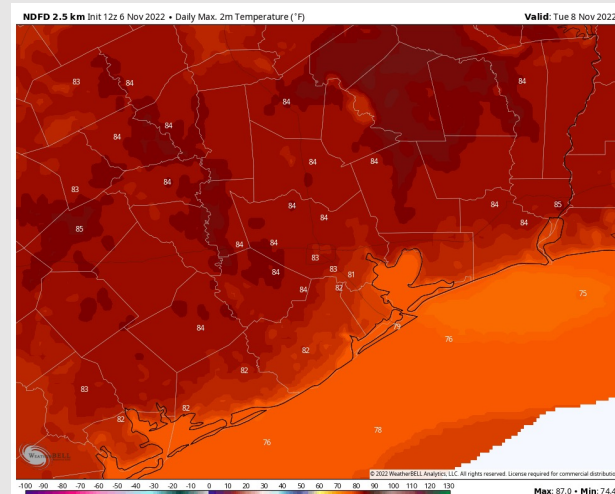
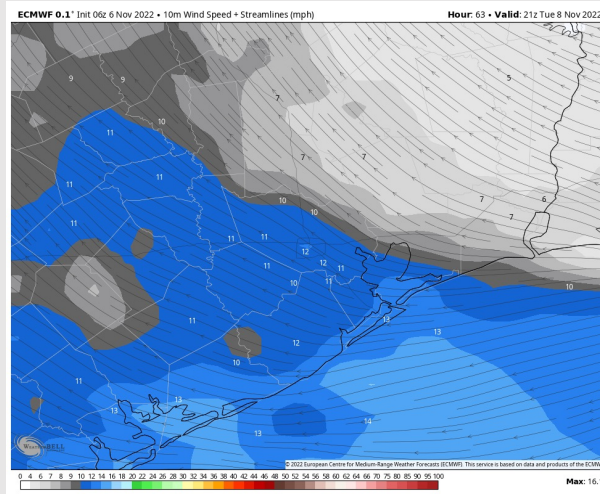
Temps: High temperatures Tuesday in the mid to upper 70s F near the boarding station and in the low 80s F at all other stations.

Visibility: Not anticipating any visibility concerns at this time.

Precip Forecast: 3 PM CST

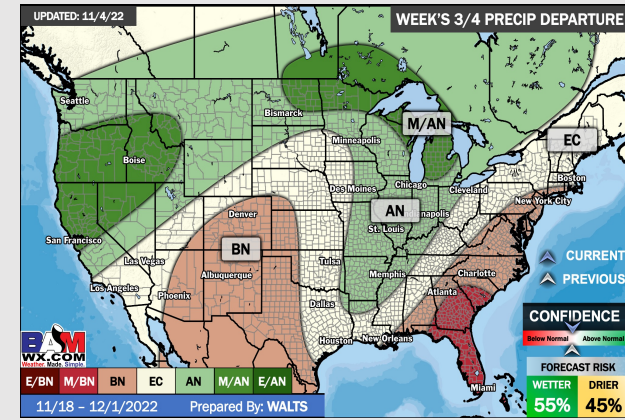
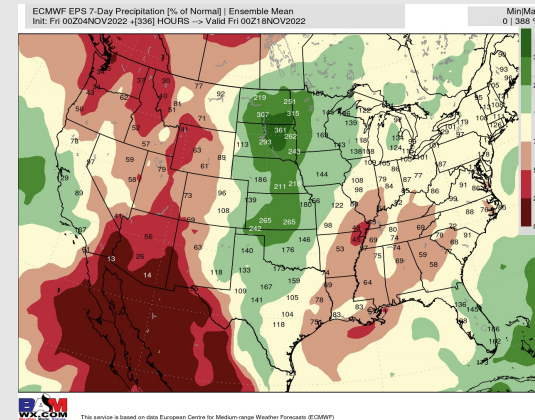
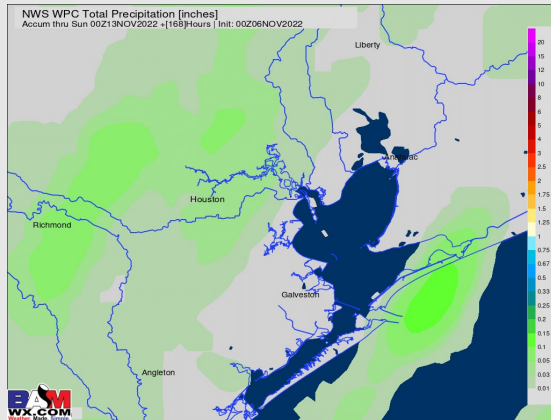
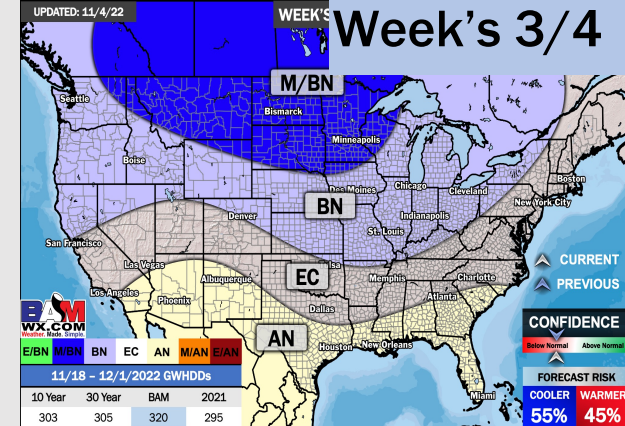
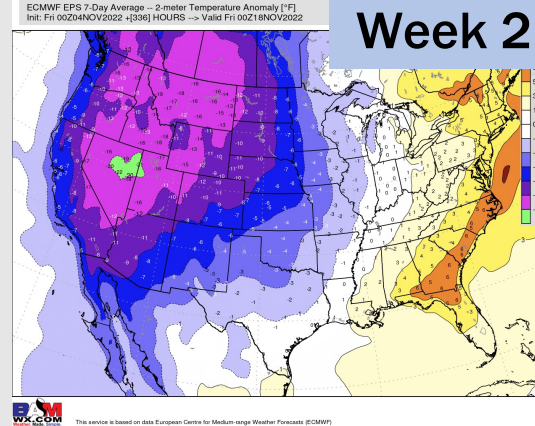
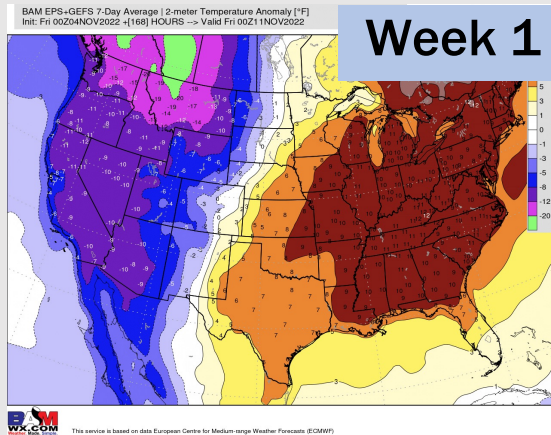


Wind Speed
3 PM CST



High Temps
Tuesday

Houston Pilots: 11/6/22



- Temperatures expected to be above normal next week. More widespread chances of precipitation going into the beginning of the week.
- Week 2 to feature normal temperatures and below normal precipitation.
- The weeks ³/₄ timeframe looks to feature above normal temperatures and normal risks for precipitation.