

# Houston Pilots Forecast Package



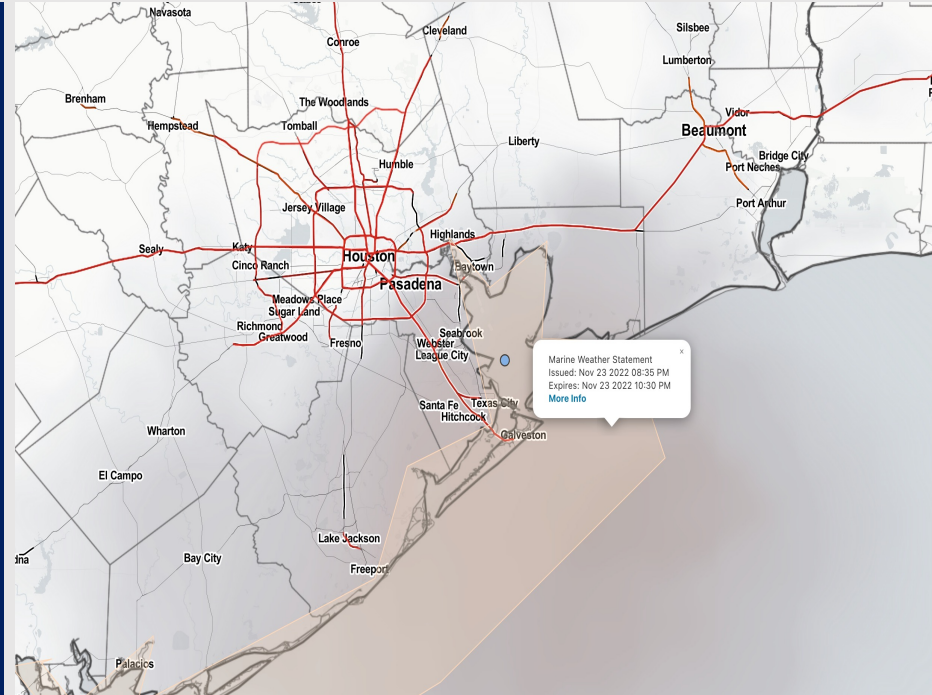
Updated: 10:30 PM CT

Wednesday, November 23, 2022

Forecaster: John Kemper

## Weather Headlines

- Areas of Dense Fog impacting the outer bay stations, progressing beyond Morgan's Point toward the northern stations.
- While lower confidence in exact time range where fog will dissipate, would anticipate areas of dense fog to continue to be possible and impactful for ALL locations through at least 4AM-CT, with fog gradually becoming more patchy through 9AM-CT.
- MORE DETAILS ON CURRENT FOG BELOW. SEE VISIBILITY SLIDE
- Not anticipating any tropical activity concerns over the next 10 days. Entering the last week of Atlantic Hurricane Season.



**Radar/NWS Alerts: 10:30 PM CT**



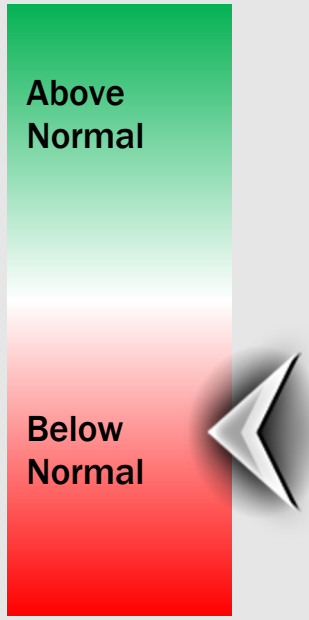
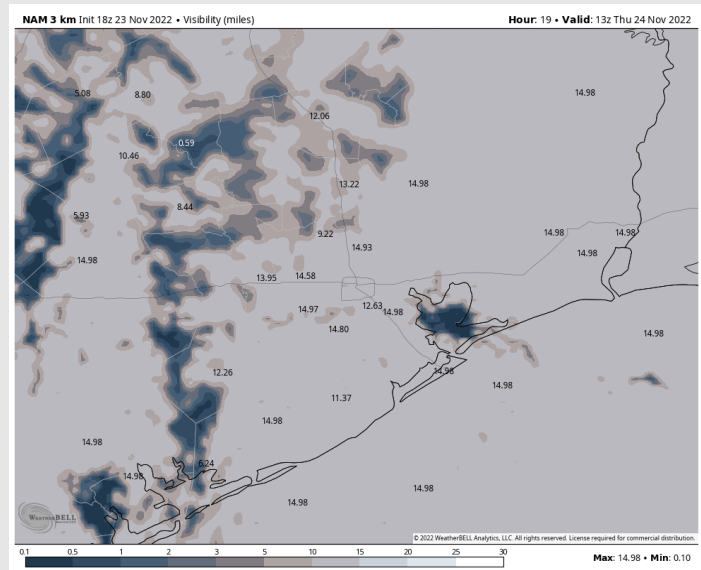
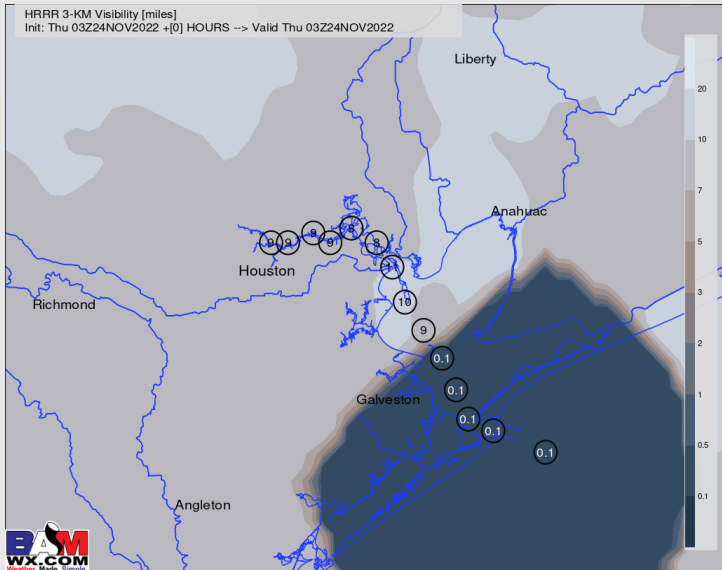
As always, please do not hesitate to reach out to us with any forecast questions via the chat option on the Weather Porthole or our on-call number, **(317)-560-8122** press 1 for forecast questions.

# Houston Pilots Visibility Report



## Current Visibility as of 10:15PM-CT      7AM-CT THU Visibility (miles)

## Confidence



**Reduced Visibility Threat**

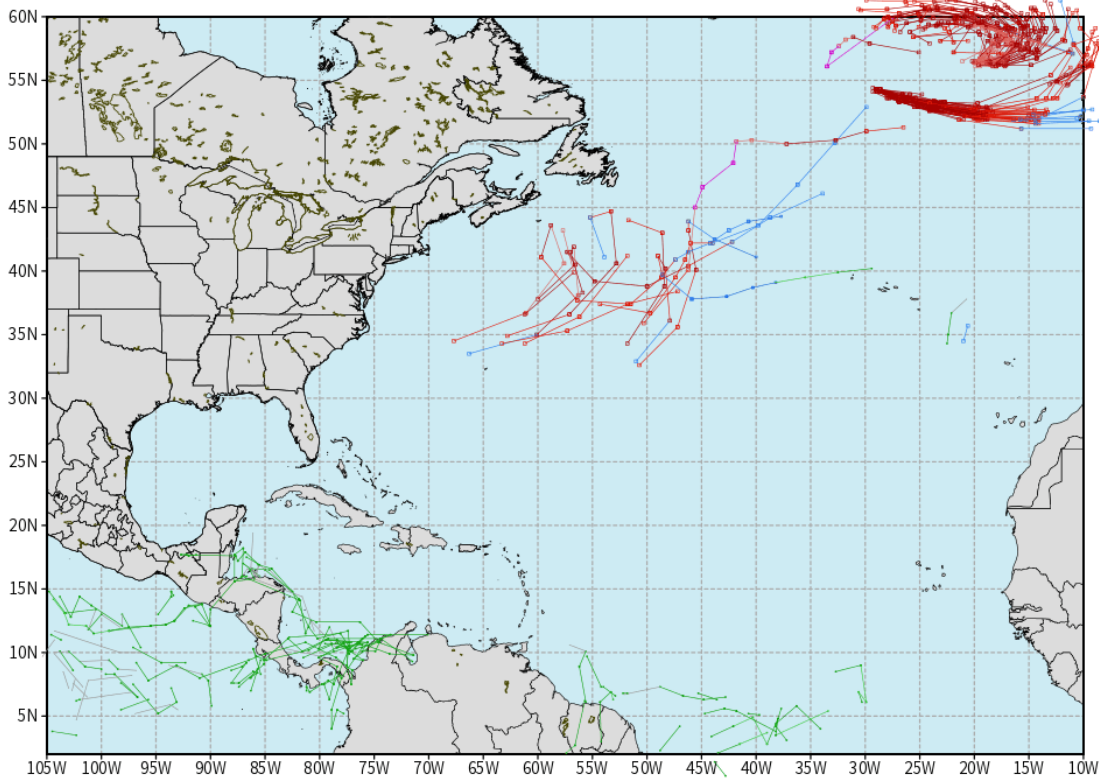
Current – 9 AM THU	<b>Medium-High</b>
--------------------	--------------------

- Despite poor model consistency for this activity, favoring areas of dense fog to continue to be possible for all locations through 4AM-CT. Visibility of less than 0.5 mile will be possible at times, and has been observed.
- After 4AM-CT and through ~9AM-CT, favoring fog to become more patchy as system moves in from the southwest, which should push fog risk farther north. Lower confidence in exact timing when area fog risk will end.
- Will continue to send updates as needed as confidence grows regarding timing and impacts.

## European Data Tracks Next 10 Days

ECMWF ATLANTIC EPS Cyclone Locations --> Next [10-days]  
INIT: 12Z23NOV2022 --> UNTIL 12Z03DEC2022

- o-o ENSEMBLE MEAN
- o-o 1000 - 1010 hPa
- o-o 980 - 999 hPa
- o-o 960 - 979 hPa
- o-o 950 - 959 hPa
- o-o < 950 hPa



[weathermodels.com](http://weathermodels.com)

**Not anticipating any tropical activity for SE TX over the next 10 days.**

### Confidence



Above Normal      Below Normal



# Houston Pilots Wind Report



## Confidence



## Example

Sustained wind 13 Knots  
Gusts 18 Knots  
Wind from the N

WS: 13  
G:18  
N

Time Knots	Wed 8pm	Wed 9pm	Wed 10pm	Wed 11pm	Thu 12am	Thu 1am	Thu 2am	Thu 3am	Thu 4am	Thu 5am	Thu 6am	Thu 7am	Thu 8am	Thu 9am	Thu 10am	Thu 11am	Thu 12pm	Thu 1pm	Thu 2pm	Thu 3pm	Thu 4pm	Thu 5pm	Thu 6pm	Thu 7pm	Thu 8pm	Thu 9pm	Thu 10pm	Thu 11pm	Fri 12am	Fri 1am	Fri 2am	Fri 3am	Fri 4am	Fri 5am	Fri 6am	Fri 7am			
610 Bridge	5 15 SE 5	4 12 SE 4	4 11 SE 4	6 15 SE 6	6 14 SE 6	4 11 ESE 4	4 11 ESE 4	5 12 ESE 5	5 14 ESE 5	6 13 ESE 6	7 13 ESE 7	8 19 ESE 8	8 22 SE 8	10 24 SE 10	10 17 SSW 10	6 11 ESE 6	6 12 E 6	6 12 E 6	6 10 E 6	6 9 NE 6	5 8 NNE 5	5 8 NNE 5	5 9 NE 5	5 10 NE 5	5 10 NE 5	5 11 NE 5	6 12 NE 6	6 14 ENE 6	6 13 ENE 6	7 13 ENE 7	7 13 ENE 7	7 14 NE 7	7 13 NE 7	7 13 NE 7	7 13 NE 7				
Kinder 1	14 5 SE 5	11 3 SE 3	11 3 SE 3	15 5 SE 5	13 4 SE 4	11 4 ESE 4	11 4 ESE 4	11 4 ESE 4	13 5 ESE 5	12 5 ESE 5	13 5 ESE 5	18 8 ESE 8	23 9 SE 9	24 10 SE 10	17 10 SSW 10	11 6 ESE 6	12 6 E 6	12 6 E 6	10 6 E 6	10 5 ENE 5	8 5 NNE 5	8 5 NNE 5	9 5 NE 5	10 5 NE 5	10 5 NE 5	11 5 NE 5	12 6 NE 6	14 6 ENE 6	13 7 ENE 7	13 7 ENE 7	13 7 NE 7	14 7 NE 7	14 7 NE 7	14 7 NE 7	13 7 NE 7				
Greens Bayou	12 4 ESE 4	11 3 ESE 3	11 3 ESE 3	14 5 SE 5	12 4 SE 4	10 4 ESE 4	11 4 ESE 4	11 4 ESE 4	12 5 ESE 5	12 5 ESE 5	13 6 ESE 6	17 9 ESE 9	23 10 SE 10	24 12 SE 12	20 7 SE 7	11 7 ESE 7	11 7 E 7	11 6 ENE 6	10 6 ENE 6	10 5 ENE 5	8 5 ESE 5	7 5 NNE 5	8 5 NNE 5	9 5 NE 5	10 5 NE 5	10 5 NE 5	11 6 NE 6	12 6 NE 6	13 6 NE 6	13 7 ENE 7	13 7 ENE 7	13 7 NE 7	13 7 NE 7	13 7 NE 7	14 7 NE 7	13 7 NE 7			
Shell Crude	12 4 ESE 4	11 3 ESE 3	12 3 ESE 3	14 4 SE 4	12 4 SE 4	10 3 ESE 3	11 4 ESE 4	11 4 ESE 4	12 5 ESE 5	12 5 ESE 5	14 6 ESE 6	18 9 ESE 9	24 10 SE 10	23 12 SE 12	27 7 SE 7	11 7 ESE 7	12 7 E 7	11 6 ENE 6	11 6 ENE 6	10 6 ENE 6	9 5 ESE 5	8 5 NNE 5	8 5 NNE 5	9 5 NE 5	10 5 NE 5	10 5 NE 5	12 6 NE 6	12 6 NE 6	13 6 NE 6	14 7 ENE 7	14 7 ENE 7	14 7 NE 7	14 7 NE 7	14 7 NE 7	14 7 NE 7	14 7 NE 7	13 7 NE 7		
Lynchburg Ferries	11 4 ESE 4	11 4 ESE 4	12 5 ESE 5	14 4 SE 4	12 4 SE 4	11 3 ESE 3	11 4 ESE 4	11 4 ESE 4	12 5 ESE 5	12 5 ESE 5	13 6 ESE 6	18 9 ESE 9	23 10 SE 10	23 12 SE 12	28 7 SE 7	12 7 ESE 7	12 7 E 7	11 6 ENE 6	11 6 ENE 6	10 6 ENE 6	9 5 ESE 5	8 5 NNE 5	8 5 NNE 5	9 5 NE 5	10 5 NE 5	10 5 NE 5	12 6 NE 6	12 6 NE 6	13 7 ENE 7	14 7 ENE 7	14 7 NE 7	14 7 NE 7	14 7 NE 7	14 7 NE 7	14 7 NE 7	13 7 NE 7			
Exxon 3	11 6 ESE 6	12 6 ESE 6	13 7 SE 7	14 7 SE 7	13 6 SE 6	11 5 ESE 5	12 5 ESE 5	11 5 ESE 5	12 7 ESE 7	12 7 ESE 7	12 8 ESE 8	17 10 ESE 10	21 11 SE 11	24 12 SE 12	31 16 SE 16	13 8 ESE 8	12 8 E 8	12 7 ENE 7	11 6 ENE 6	11 6 ENE 6	9 5 ESE 5	8 5 NNE 5	8 5 NNE 5	9 5 NE 5	10 5 NE 5	10 5 NE 5	12 6 NE 6	13 7 ENE 7	14 7 ENE 7	14 8 ENE 8	15 8 ENE 8	15 8 NE 8	14 8 NE 8	14 8 NE 8	14 8 NE 8	14 8 NE 8	14 8 NE 8	14 8 NE 8	
Morgans Point	12 8 ESE 8	12 8 ESE 8	14 9 SE 9	14 8 SE 8	12 6 SE 6	11 7 ESE 7	11 7 ESE 7	11 7 ESE 7	14 8 ESE 8	14 8 ESE 8	14 8 ESE 8	17 11 ESE 11	20 12 SE 12	25 16 SE 16	30 9 SE 9	13 8 ESE 8	13 8 E 8	12 7 ENE 7	11 6 ENE 6	11 6 ENE 6	10 5 ESE 5	8 5 NNE 5	8 5 NNE 5	10 6 NE 6	11 6 NE 6	11 6 NE 6	12 7 NE 7	13 7 NE 7	14 8 ENE 8	15 8 ENE 8	15 8 NE 8	14 8 NE 8	14 8 NE 8	15 8 NE 8	15 8 NE 8	15 8 NE 8	15 8 NE 8	14 8 NE 8	
75/76	13 9 ESE 9	13 9 ESE 9	15 9 SE 9	15 7 SE 7	14 6 SE 6	12 7 ESE 7	12 7 ESE 7	12 7 ESE 7	15 8 ESE 8	15 8 ESE 8	16 8 ESE 8	18 11 ESE 11	20 12 SE 12	24 16 SE 16	28 9 SE 9	14 8 ESE 8	13 8 E 8	13 7 ENE 7	12 6 ENE 6	12 6 ENE 6	11 5 ESE 5	8 5 NNE 5	8 5 NNE 5	11 6 NE 6	11 6 NE 6	12 7 NE 7	13 7 NE 7	14 8 ENE 8	15 8 ENE 8	16 8 NE 8	16 8 NE 8	16 8 NE 8	16 8 NE 8	16 8 NE 8	16 8 NE 8	16 8 NE 8	16 8 NE 8		
63/64	14 9 ESE 9	14 8 ESE 8	16 9 SE 9	15 7 SE 7	14 6 SE 6	12 7 ESE 7	12 7 ESE 7	12 7 ESE 7	15 8 ESE 8	15 8 ESE 8	17 9 ESE 9	19 11 ESE 11	18 11 ESE 11	23 14 SE 14	26 16 SE 16	15 9 ESE 9	14 8 ESE 8	13 8 ENE 8	13 8 ENE 8	12 8 ENE 8	10 6 ESE 6	9 6 NNE 6	9 6 NNE 6	11 7 NE 7	12 7 NE 7	12 7 NE 7	13 8 ENE 8	14 8 ENE 8	15 9 ENE 9	16 9 ENE 9	17 9 NE 9	17 9 NE 9	17 9 NE 9	16 8 NE 8	16 8 NE 8	16 8 NE 8	16 8 NE 8	16 8 NE 8	
51/52	15 10 ESE 10	15 9 ESE 9	17 10 SE 10	16 7 SE 7	13 6 SE 6	13 6 ESE 6	12 6 ESE 6	12 6 ESE 6	16 9 ESE 9	15 9 ESE 9	18 11 ESE 11	18 11 ESE 11	18 12 ESE 12	23 15 SE 15	26 9 SE 9	15 8 ESE 8	14 8 ESE 8	13 8 ENE 8	13 8 ENE 8	12 8 ENE 8	11 6 ESE 6	9 6 NNE 6	9 6 NNE 6	10 7 NE 7	10 7 NE 7	12 8 NE 8	13 8 NE 8	14 9 ENE 9	14 9 ENE 9	16 9 NE 9	16 9 NE 9	17 9 NE 9	17 9 NE 9	17 9 NE 9	17 9 NE 9	17 9 NE 9	17 9 NE 9		
37/38	17 10 ESE 10	17 9 ESE 9	19 10 SE 10	17 7 SE 7	13 6 SE 6	13 6 ESE 6	13 6 ESE 6	13 6 ESE 6	15 9 ESE 9	15 9 ESE 9	16 11 ESE 11	18 12 ESE 12	17 12 ESE 12	22 14 SE 14	24 9 SE 9	15 8 ESE 8	14 8 ESE 8	13 8 ENE 8	13 8 ENE 8	12 8 ENE 8	11 6 ESE 6	9 6 NNE 6	9 6 NNE 6	10 7 NE 7	10 7 NE 7	12 8 NE 8	13 8 NE 8	14 9 ENE 9	14 9 ENE 9	16 9 NE 9	16 9 NE 9	17 9 NE 9	17 9 NE 9	17 9 NE 9	17 9 NE 9	17 9 NE 9	17 9 NE 9	17 9 NE 9	
25/26	18 11 ESE 11	18 12 ESE 12	20 13 SE 13	19 9 SE 9	14 8 SE 8	13 8 ESE 8	13 8 ESE 8	13 8 ESE 8	15 9 ESE 9	17 12 ESE 12	17 11 ESE 11	18 10 ESE 10	18 12 ESE 12	21 14 SE 14	23 9 SE 9	15 8 ESE 8	14 8 ESE 8	12 8 ENE 8	12 8 ENE 8	12 8 ENE 8	10 6 ESE 6	9 6 NNE 6	9 6 NNE 6	10 7 NE 7	10 7 NE 7	11 8 NE 8	12 8 NE 8	14 9 ENE 9	15 9 ENE 9	17 9 NE 9	17 9 NE 9	18 9 NE 9	18 9 NE 9	18 9 NE 9	18 9 NE 9	18 9 NE 9	18 9 NE 9	18 9 NE 9	
11/12	18 14 ESE 14	18 15 ESE 15	21 16 SE 16	20 15 SE 15	16 11 SE 11	14 11 ESE 11	14 11 ESE 11	15 11 ESE 11	15 11 ESE 11	15 11 ESE 11	18 11 ESE 11	16 11 ESE 11	19 13 ESE 13	21 15 SE 15	23 10 SE 10	15 10 ESE 10	15 9 ESE 9	12 8 ENE 8	12 8 ENE 8	12 8 ENE 8	11 7 ENE 7	10 6 ESE 6	10 6 NNE 6	10 6 NNE 6	10 7 NE 7	11 7 NE 7	12 8 NE 8	13 8 NE 8	14 9 ENE 9	14 9 ENE 9	16 9 NE 9	16 9 NE 9	18 9 NE 9	18 9 NE 9	19 9 NE 9	19 9 NE 9	19 9 NE 9	19 9 NE 9	19 9 NE 9
1 & 2 Bravo	19 14 ESE 14	19 15 ESE 15	22 16 SE 16	23 15 SE 15	18 11 SE 11	18 11 ESE 11	18 11 ESE 11	16 11 ESE 11	17 11 ESE 11	17 11 ESE 11	18 11 ESE 11	18 11 ESE 11	18 13 ESE 13	21 15 SE 15	21 10 SE 10	15 10 ESE 10	15 9 ESE 9	12 8 ENE 8	12 8 ENE 8	12 8 ENE 8	11 7 ENE 7	11 6 ESE 6	11 6 NNE 6	11 6 NNE 6	11 7 NE 7	12 7 NE 7	13 8 NE 8	14 8 NE 8	17 9 ENE 9	17 9 ENE 9	19 9 NE 9	19 9 NE 9	20 9 NE 9	20 9 NE 9	20 9 NE 9	20 9 NE 9	20 9 NE 9	20 9 NE 9	20 9 NE 9

See slides below for official thoughts on winds.

# Houston Pilots: Thur. 11/24/2022



## Forecast Discussion

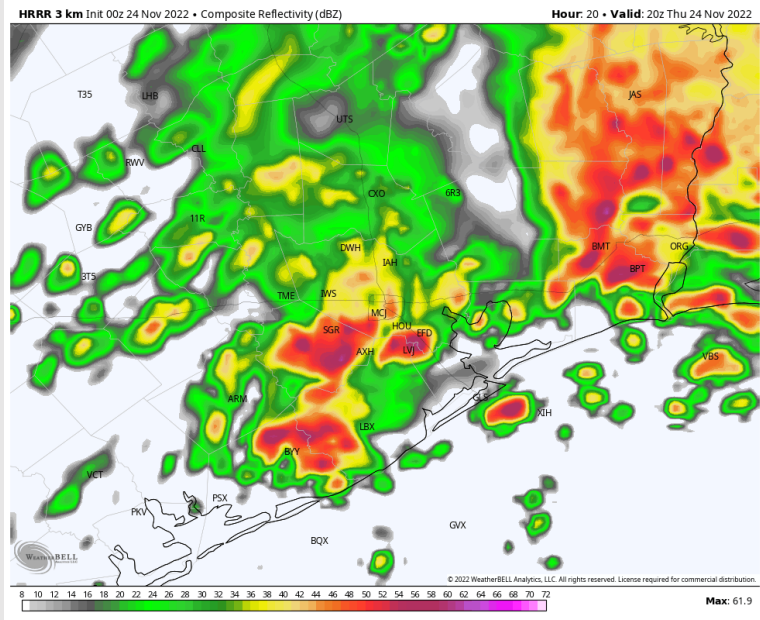
**Precip:** Anticipating a rainy day. Scattered showers/thunderstorm coverage will increase for the region around 10 AM and become fairly widespread until 6 PM (~80%). From 6 PM through the rest of the night, rain chances will drop to ~40%. A few locally stronger thunderstorms cannot be ruled out for today.

**Wind:** Favoring winds out of the ESE for the morning and early afternoon. Winds N of Morgan's Point will be at 7- 12 kts and S of Morgan's Point will be 12-18 kts. After 12 PM winds will subside to 4 - 9 kts N of Morgan's Point. Winds will become more variable after 12 PM until coming out of the NE by 8 PM. Winds near the boarding station seeing between 21 - 26 kts after 6 PM where they continue the rest of the night.

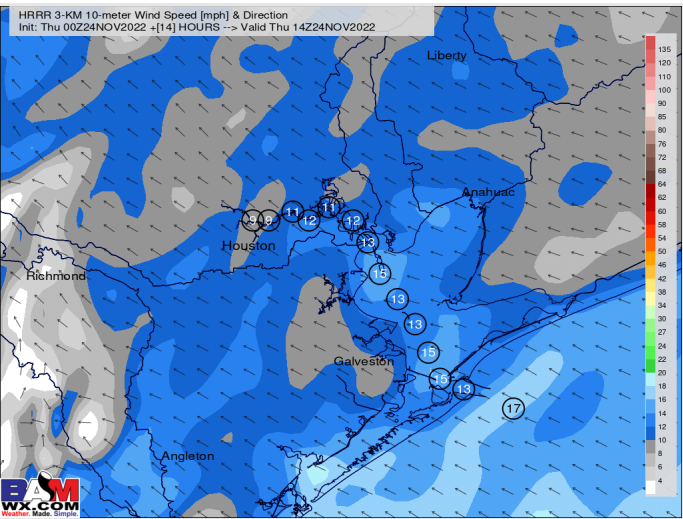
**Temps:** Warming trend continues. High temps will be in the low/mid 70s F across all stations.

**Visibility:** Areas of Dense Fog will be possible through 4AM-CT, becoming more patchy through 9AM-CT (MORE DETAILS ON VISIBILITY SLIDE!)

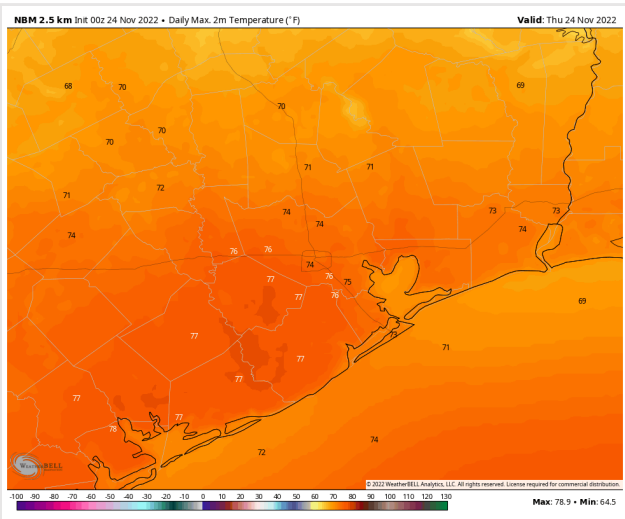
## Precip Forecast: 2 PM CT



Wind Speed  
8 AM CT



High Temps  
Today



# Houston Pilots: Fri. 11/25/2022



## Forecast Discussion

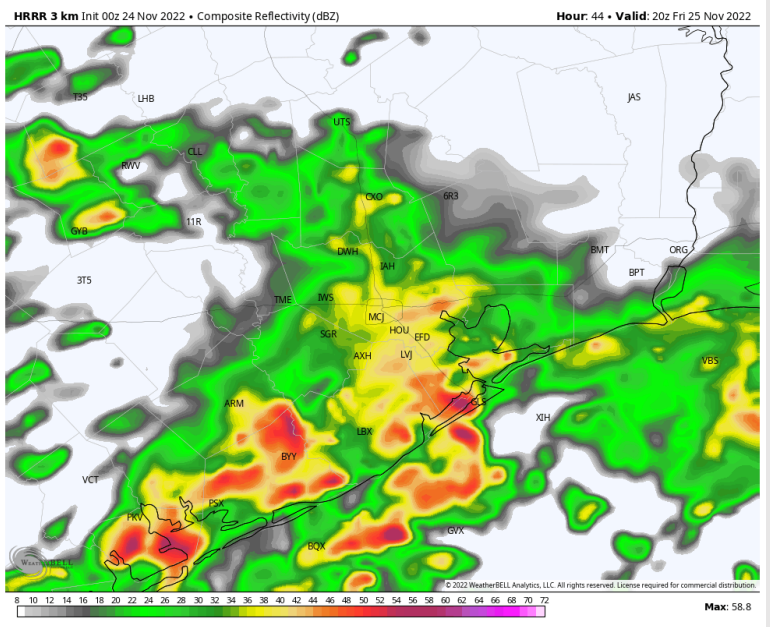
**Precip:** A slight chance (30%) for exiting showers and storms in the early morning from 12 AM – 1 AM. Then anticipating a dry slot from 1 AM – 10 AM. By 11 AM / 12 PM, more widespread showers and storms will enter the region (80 % chance) and last through the rest of the night.

**Wind:** Winds will be out of the NE for the entire day. Winds N of Morgan’s Point will start off at 4-9 kts and S of Morgan’s Point at 12-18 kts. Winds will then increase by 1 PM to 12 – 17 kts N of Morgan’s Point, and 17 – 23 kts S of Morgan’s Point and remain elevated from 1 PM – 12 AM. **Wind gusts could be over 30+ kts after 3 PM.**

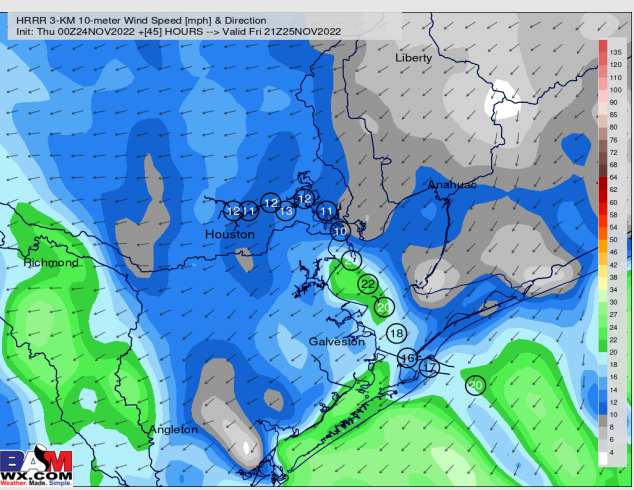
**Temps:** High temps Friday will be in the high 60s F/near 70 F across all stations.

**Visibility:** Reduction in visibility to less than 3 miles will be possible for brief periods (30 minutes) under heavier rain cells

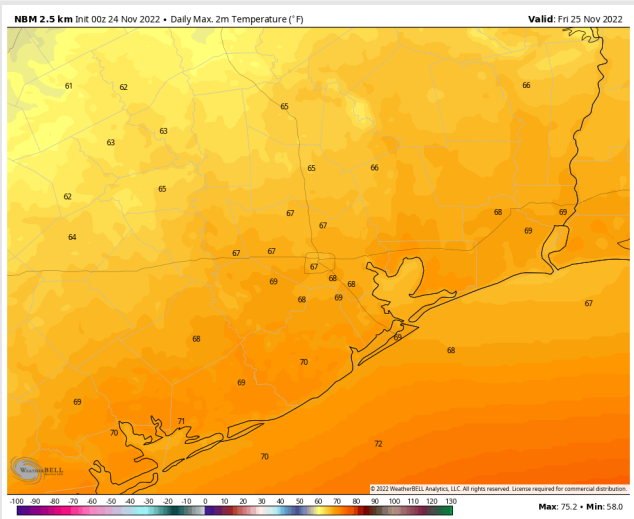
## Precip Forecast: 2 PM CT



Wind Speed  
3 PM CT



High Temps  
Friday



# Houston Pilots: sat. 11/26/2022



## Forecast Discussion

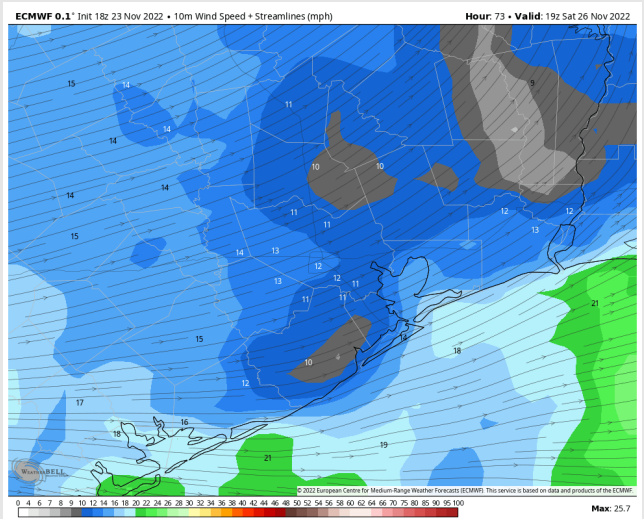
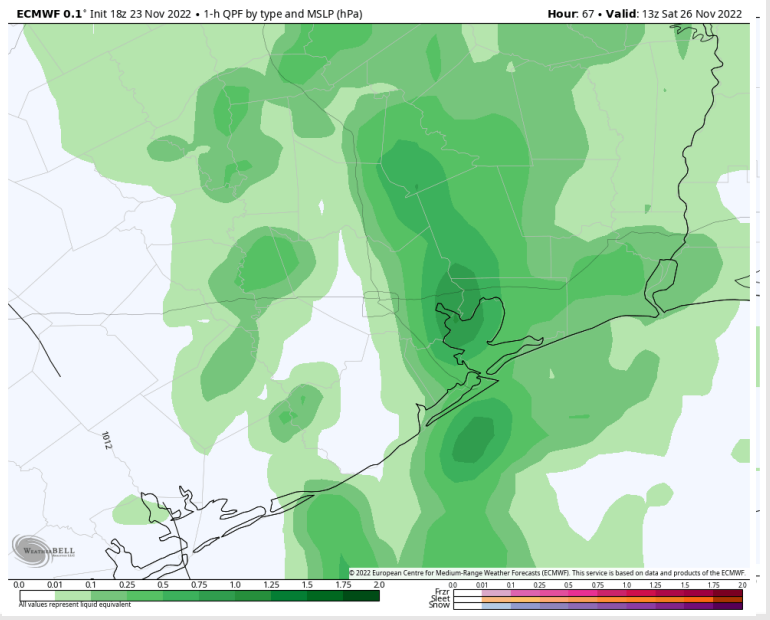
**Precip:** Widespread showers/storms (80% chance) will continue throughout most of the AM hours on Saturday. By 9 AM, chances decrease to 40% as showers/storms become more scattered throughout the area. From 12 PM throughout the rest of the day, anticipating dry conditions.

**Wind:** Winds will shift out of the SE by midnight and continue to veer until coming out of the SW by 11 AM for the rest of the day. Winds at 9-14 kts N of Morgan's Point for the entire day and 17-23 kts until 1 PM. After 1 PM, winds calm a tad to 14-20 kts S of Morgan's Point for the rest of the day Saturday.

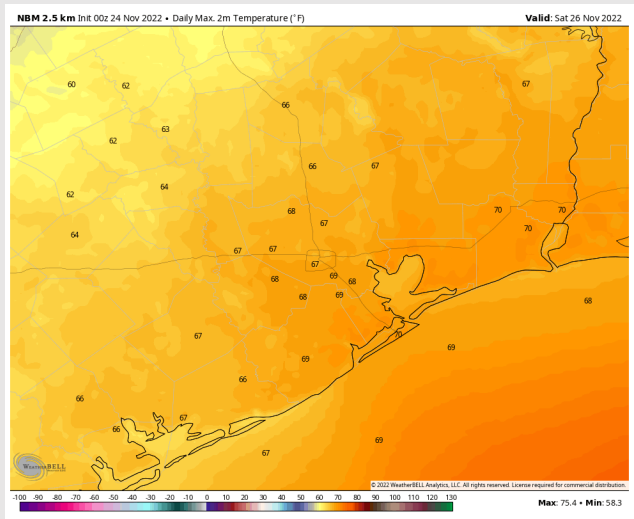
**Temps:** High temperatures on Saturday in the high 60s F for all stations.

**Visibility:** Not anticipating any visibility concerns at this time.

## Precip Forecast: 7 AM CT



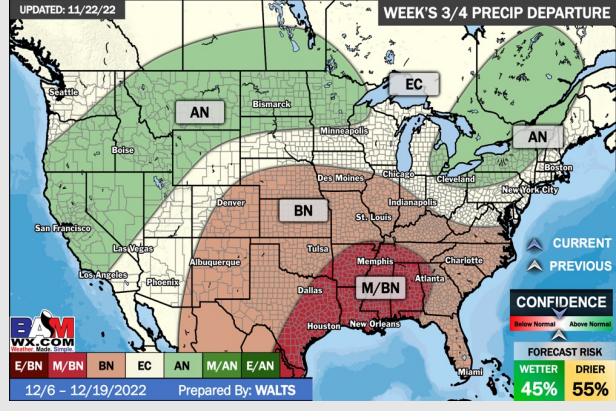
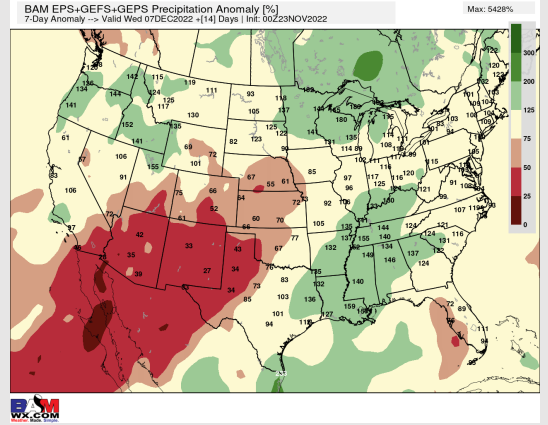
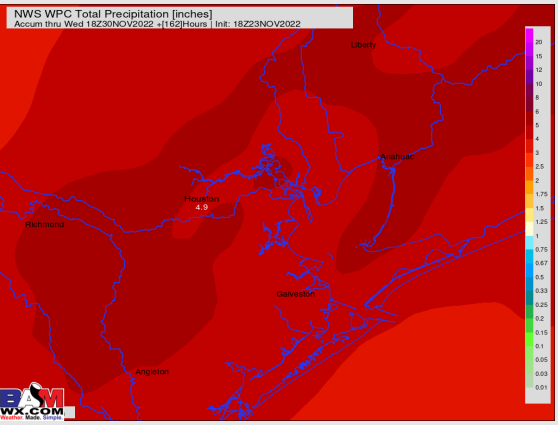
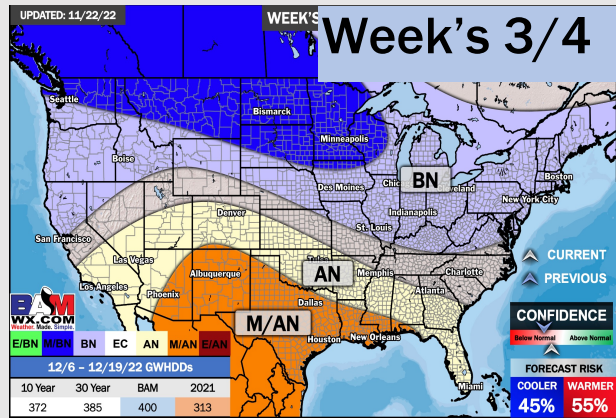
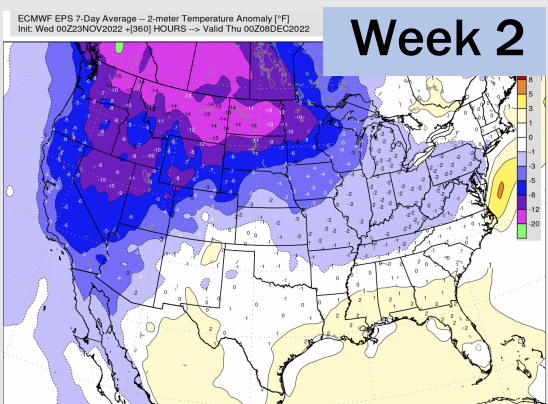
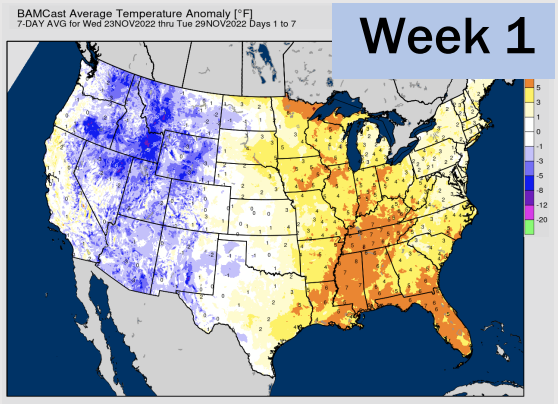
Wind Speed  
1 PM CT



High Temps  
Saturday



# Houston Pilots: 11/23/22



- Temperatures expected to be above normal this week. A quieter mid-week is followed by rain chances Thursday/ Friday.
- Week 2 is expected to be near normal for temperatures and near normal for rain chances into early December.
- The weeks 3/4 timeframe looks to feature above normal temperatures and below normal risks for precipitation.