

# Houston Pilots Forecast Package



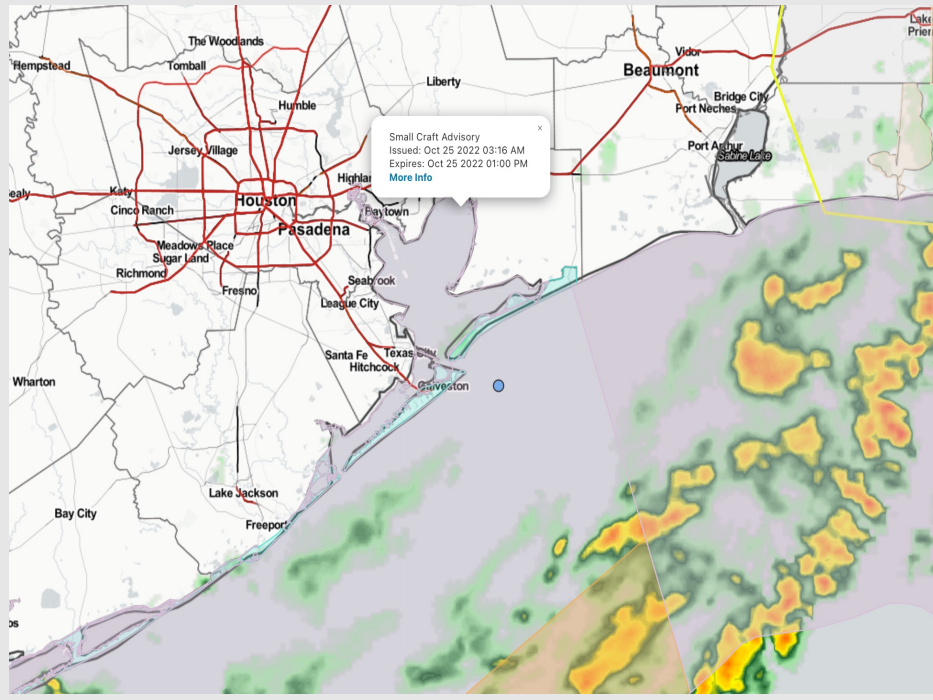
Updated: 5:00 AM CT

Tuesday, October 25, 2022

Forecaster: Tyler Hollingsworth

## Weather Headlines

- Favoring dry conditions the next three days after the front moves through Tuesday AM.
- No direct tropical activity is favored in SE TX over the next 7-10 days.
- Some gusts of 30 – 35 MPH possible for Tuesday. More details on wind forecasts for each day below.
- No visibility concerns over the next few days.



**Radar/ NWS Alerts: 4:44 AM CT**



As always, please do not hesitate to reach out to us with any forecast questions via the chat option on the Weather Porthole or our on-call number, **(317)-560-8122** press 1 for forecast questions.

## European Data Tracks Next 10 Days



**There are no tropical threats anticipated for SE TX over the next 7-10 days.**

**Confidence**

Above Normal      Below Normal





# Houston Pilots Wind Report



**Confidence**

Above Normal Below Normal

**Example**

Sustained wind 13 MPH  
Gusts 18 MPH  
Wind from the N

WS: 13  
G:18  
N

Time	10-25-2022 Tue 4am	10-25-2022 Tue 5am	10-25-2022 Tue 6am	10-25-2022 Tue 7am	10-25-2022 Tue 8am	10-25-2022 Tue 9am	10-25-2022 Tue 10am	10-25-2022 Tue 11am	10-25-2022 Tue 12pm	10-25-2022 Tue 1pm	10-25-2022 Tue 2pm	10-25-2022 Tue 3pm	10-25-2022 Tue 4pm	10-25-2022 Tue 5pm	10-25-2022 Tue 6pm	10-25-2022 Tue 7pm	10-25-2022 Tue 8pm	10-25-2022 Tue 9pm	10-25-2022 Tue 10pm	10-25-2022 Tue 11pm	10-26-2022 Wed 12am	10-26-2022 Wed 1am	10-26-2022 Wed 2am	10-26-2022 Wed 3am	10-26-2022 Wed 4am	10-26-2022 Wed 5am	10-26-2022 Wed 6am	10-26-2022 Wed 7am	10-26-2022 Wed 8am	10-26-2022 Wed 9am	10-26-2022 Wed 10am	10-26-2022 Wed 11am	10-26-2022 Wed 12pm	10-26-2022 Wed 1pm	10-26-2022 Wed 2pm	10-26-2022 Wed 3pm				
Houston Pilots N - 610 Bridge	WS: 6 G:14 WNW	WS: 5 G:16 WNW	WS: 3 G:12 WNW	WS: 3 G:11 WNW	WS: 12 G:30 NNW	WS: 12 G:27 NNW	WS: 15 G:31 NNW	WS: 15 G:30 NNW	WS: 15 G:29 NNW	WS: 15 G:25 NNW	WS: 14 G:24 NNW	WS: 13 G:21 NNW	WS: 12 G:19 NNW	WS: 11 G:18 NNW	WS: 9 G:17 NNW	WS: 7 G:13 NNW	WS: 5 G:10 NNW	WS: 5 G:8 NNW	WS: 3 G:6 NNW	WS: 3 G:5 NNW	WS: 2 G:4 NNW	WS: 2 G:3 NNW	WS: 2 G:3 NNW	WS: 2 G:2 NNW	WS: 2 G:2 NNW	WS: 2 G:2 NNW	WS: 2 G:2 NNW	WS: 2 G:2 NNW	WS: 2 G:2 NNW	WS: 2 G:2 NNW	WS: 2 G:2 NNW	WS: 2 G:2 NNW	WS: 2 G:2 NNW	WS: 2 G:2 NNW	WS: 2 G:2 NNW	WS: 2 G:2 NNW	WS: 2 G:2 NNW			
Houston Pilots M - Kinder 1	WS: 6 G:14 W	WS: 3 G:12 W	WS: 3 G:11 WNW	WS: 5 G:12 WNW	WS: 12 G:30 NNW	WS: 11 G:26 NNW	WS: 14 G:31 NNW	WS: 15 G:30 NNW	WS: 15 G:29 NNW	WS: 14 G:24 NNW	WS: 14 G:24 NNW	WS: 13 G:21 NNW	WS: 12 G:19 NNW	WS: 11 G:18 NNW	WS: 9 G:17 NNW	WS: 7 G:13 NNW	WS: 5 G:9 NNW	WS: 5 G:8 NNW	WS: 3 G:6 NNW	WS: 3 G:5 NNW	WS: 2 G:4 NNW	WS: 2 G:3 NNW	WS: 2 G:3 NNW	WS: 2 G:2 NNW	WS: 2 G:2 NNW	WS: 2 G:2 NNW	WS: 2 G:2 NNW	WS: 2 G:2 NNW	WS: 2 G:2 NNW	WS: 2 G:2 NNW	WS: 2 G:2 NNW	WS: 2 G:2 NNW	WS: 2 G:2 NNW	WS: 2 G:2 NNW	WS: 2 G:2 NNW	WS: 2 G:2 NNW	WS: 2 G:2 NNW	WS: 2 G:2 NNW		
Houston Pilots L - Greens Bayou	WS: 6 G:16 WNW	WS: 5 G:16 WNW	WS: 4 G:12 W	WS: 6 G:13 WNW	WS: 11 G:29 NNW	WS: 11 G:27 NNW	WS: 14 G:30 NNW	WS: 15 G:30 NNW	WS: 15 G:29 NNW	WS: 14 G:24 NNW	WS: 14 G:23 NNW	WS: 13 G:21 NNW	WS: 12 G:19 NNW	WS: 11 G:18 NNW	WS: 9 G:17 NNW	WS: 7 G:12 NNW	WS: 5 G:9 NNW	WS: 5 G:8 NNW	WS: 3 G:6 NNW	WS: 3 G:5 NNW	WS: 2 G:4 NNW	WS: 2 G:3 NNW	WS: 2 G:3 NNW	WS: 2 G:2 NNW	WS: 2 G:2 NNW	WS: 2 G:2 NNW	WS: 2 G:2 NNW	WS: 2 G:2 NNW	WS: 2 G:2 NNW	WS: 2 G:2 NNW	WS: 2 G:2 NNW	WS: 2 G:2 NNW	WS: 2 G:2 NNW	WS: 2 G:2 NNW	WS: 2 G:2 NNW	WS: 2 G:2 NNW	WS: 2 G:2 NNW	WS: 2 G:2 NNW		
Houston Pilots K - Shell Crude	WS: 7 G:17 WNW	WS: 6 G:16 W	WS: 4 G:12 W	WS: 5 G:12 WNW	WS: 12 G:29 NNW	WS: 11 G:28 NNW	WS: 14 G:30 NNW	WS: 15 G:30 NNW	WS: 15 G:29 NNW	WS: 14 G:24 NNW	WS: 14 G:23 NNW	WS: 13 G:21 NNW	WS: 12 G:19 NNW	WS: 11 G:18 NNW	WS: 8 G:17 NNW	WS: 7 G:12 NNW	WS: 5 G:9 NNW	WS: 5 G:8 NNW	WS: 3 G:6 NNW	WS: 3 G:5 NNW	WS: 2 G:4 NNW	WS: 2 G:3 NNW	WS: 2 G:3 NNW	WS: 2 G:2 NNW	WS: 2 G:2 NNW	WS: 2 G:2 NNW	WS: 2 G:2 NNW	WS: 2 G:2 NNW	WS: 2 G:2 NNW	WS: 2 G:2 NNW	WS: 2 G:2 NNW	WS: 2 G:2 NNW	WS: 2 G:2 NNW	WS: 2 G:2 NNW	WS: 2 G:2 NNW	WS: 2 G:2 NNW	WS: 2 G:2 NNW	WS: 2 G:2 NNW		
Houston Pilots J - Lynchburg Ferries	WS: 8 G:19 WNW	WS: 5 G:15 W	WS: 4 G:12 W	WS: 6 G:14 WNW	WS: 12 G:29 NNW	WS: 13 G:33 NNW	WS: 15 G:31 NNW	WS: 15 G:30 NNW	WS: 15 G:29 NNW	WS: 15 G:25 NNW	WS: 14 G:22 NNW	WS: 13 G:21 NNW	WS: 12 G:19 NNW	WS: 11 G:18 NNW	WS: 8 G:17 NNW	WS: 7 G:12 NNW	WS: 5 G:9 NNW	WS: 5 G:8 NNW	WS: 4 G:6 NNW	WS: 3 G:5 NNW	WS: 3 G:4 NNW	WS: 3 G:3 NNW	WS: 3 G:3 NNW	WS: 3 G:3 NNW	WS: 3 G:3 NNW	WS: 3 G:3 NNW	WS: 3 G:3 NNW	WS: 3 G:3 NNW	WS: 3 G:3 NNW	WS: 3 G:3 NNW	WS: 3 G:3 NNW	WS: 3 G:3 NNW	WS: 3 G:3 NNW	WS: 3 G:3 NNW	WS: 3 G:3 NNW	WS: 3 G:3 NNW	WS: 3 G:3 NNW	WS: 3 G:3 NNW		
Houston Pilots I - Exxon 3	WS: 9 G:22 NNW	WS: 5 G:15 WNW	WS: 4 G:12 WNW	WS: 6 G:14 WNW	WS: 13 G:31 NNW	WS: 14 G:35 NNW	WS: 16 G:32 NNW	WS: 16 G:29 NNW	WS: 15 G:26 NNW	WS: 15 G:22 NNW	WS: 15 G:22 NNW	WS: 14 G:22 NNW	WS: 13 G:20 NNW	WS: 11 G:18 NNW	WS: 9 G:17 NNW	WS: 8 G:13 NNW	WS: 6 G:11 NNW	WS: 5 G:9 NNW	WS: 4 G:8 NNW	WS: 4 G:6 NNW	WS: 4 G:5 NNW	WS: 3 G:4 NNW	WS: 3 G:3 NNW	WS: 3 G:3 NNW	WS: 3 G:3 NNW	WS: 3 G:3 NNW	WS: 3 G:3 NNW	WS: 3 G:3 NNW	WS: 3 G:3 NNW	WS: 3 G:3 NNW	WS: 3 G:3 NNW	WS: 3 G:3 NNW	WS: 3 G:3 NNW	WS: 3 G:3 NNW	WS: 3 G:3 NNW	WS: 3 G:3 NNW	WS: 3 G:3 NNW	WS: 3 G:3 NNW		
Houston Pilots H - Morgans Point	WS: 12 G:24 NNW	WS: 8 G:17 WNW	WS: 6 G:14 WNW	WS: 8 G:17 WNW	WS: 15 G:32 NNW	WS: 15 G:35 NNW	WS: 18 G:32 NNW	WS: 18 G:29 NNW	WS: 17 G:28 NNW	WS: 17 G:27 NNW	WS: 16 G:22 NNW	WS: 15 G:22 NNW	WS: 14 G:20 NNW	WS: 12 G:19 NNW	WS: 10 G:17 NNW	WS: 9 G:15 NNW	WS: 7 G:13 NNW	WS: 6 G:11 NNW	WS: 6 G:10 NNW	WS: 6 G:9 NNW	WS: 5 G:8 NNW	WS: 5 G:7 NNW	WS: 5 G:7 NNW	WS: 4 G:6 NNW	WS: 4 G:6 NNW	WS: 4 G:6 NNW	WS: 4 G:6 NNW	WS: 4 G:6 NNW	WS: 4 G:6 NNW	WS: 4 G:6 NNW	WS: 4 G:6 NNW	WS: 4 G:6 NNW	WS: 4 G:6 NNW	WS: 4 G:6 NNW	WS: 4 G:6 NNW	WS: 4 G:6 NNW	WS: 4 G:6 NNW	WS: 4 G:6 NNW		
Houston Pilots G - 75/76	WS: 18 G:29 NNW	WS: 12 G:20 WNW	WS: 10 G:18 WNW	WS: 11 G:18 WNW	WS: 20 G:33 NNW	WS: 20 G:34 NNW	WS: 21 G:32 NNW	WS: 21 G:31 NNW	WS: 21 G:27 NNW	WS: 19 G:28 NNW	WS: 19 G:23 NNW	WS: 18 G:22 NNW	WS: 17 G:20 NNW	WS: 15 G:18 NNW	WS: 14 G:17 NNW	WS: 11 G:15 NNW	WS: 10 G:14 NNW	WS: 9 G:13 NNW	WS: 8 G:12 NNW	WS: 8 G:11 NNW	WS: 7 G:10 NNW	WS: 7 G:10 NNW	WS: 7 G:10 NNW	WS: 6 G:9 NNW	WS: 6 G:9 NNW	WS: 6 G:9 NNW	WS: 6 G:9 NNW	WS: 6 G:9 NNW	WS: 6 G:9 NNW	WS: 6 G:9 NNW	WS: 6 G:9 NNW	WS: 6 G:9 NNW	WS: 6 G:9 NNW	WS: 6 G:9 NNW	WS: 6 G:9 NNW	WS: 6 G:9 NNW	WS: 6 G:9 NNW	WS: 6 G:9 NNW	WS: 6 G:9 NNW	
Houston Pilots F - 63/64	WS: 20 G:31 NNW	WS: 14 G:21 WNW	WS: 11 G:19 WNW	WS: 12 G:21 WNW	WS: 23 G:33 NNW	WS: 23 G:34 NNW	WS: 23 G:32 NNW	WS: 23 G:32 NNW	WS: 23 G:28 NNW	WS: 23 G:27 NNW	WS: 21 G:24 NNW	WS: 20 G:22 NNW	WS: 19 G:22 NNW	WS: 18 G:21 NNW	WS: 16 G:19 NNW	WS: 12 G:16 NNW	WS: 11 G:15 NNW	WS: 10 G:14 NNW	WS: 9 G:13 NNW	WS: 8 G:12 NNW	WS: 8 G:11 NNW	WS: 7 G:10 NNW	WS: 7 G:10 NNW	WS: 7 G:10 NNW	WS: 6 G:9 NNW	WS: 6 G:9 NNW	WS: 6 G:9 NNW	WS: 6 G:9 NNW	WS: 6 G:9 NNW	WS: 6 G:9 NNW	WS: 6 G:9 NNW	WS: 6 G:9 NNW	WS: 6 G:9 NNW	WS: 6 G:9 NNW	WS: 6 G:9 NNW	WS: 6 G:9 NNW	WS: 6 G:9 NNW	WS: 6 G:9 NNW	WS: 6 G:9 NNW	
Houston Pilots E - 51/52	WS: 22 G:32 NNW	WS: 15 G:22 NNW	WS: 11 G:20 WNW	WS: 12 G:21 WNW	WS: 23 G:34 NNW	WS: 23 G:34 NNW	WS: 23 G:33 NNW	WS: 23 G:33 NNW	WS: 24 G:29 NNW	WS: 24 G:26 NNW	WS: 20 G:25 NNW	WS: 19 G:23 NNW	WS: 19 G:22 NNW	WS: 17 G:22 NNW	WS: 16 G:20 NNW	WS: 13 G:18 NNW	WS: 12 G:17 NNW	WS: 11 G:16 NNW	WS: 11 G:15 NNW	WS: 10 G:14 NNW	WS: 10 G:13 NNW	WS: 9 G:12 NNW	WS: 9 G:12 NNW	WS: 9 G:12 NNW	WS: 9 G:12 NNW	WS: 9 G:12 NNW	WS: 8 G:10 NNW	WS: 8 G:10 NNW	WS: 8 G:10 NNW	WS: 8 G:10 NNW	WS: 8 G:10 NNW	WS: 8 G:10 NNW	WS: 8 G:10 NNW	WS: 8 G:10 NNW	WS: 8 G:10 NNW	WS: 8 G:10 NNW	WS: 8 G:10 NNW	WS: 8 G:10 NNW	WS: 8 G:10 NNW	
Houston Pilots D - 37/38	WS: 22 G:32 NNW	WS: 16 G:22 NNW	WS: 12 G:19 WNW	WS: 12 G:19 WNW	WS: 18 G:33 NNW	WS: 24 G:33 NNW	WS: 24 G:32 NNW	WS: 25 G:30 NNW	WS: 24 G:27 NNW	WS: 22 G:27 NNW	WS: 20 G:26 NNW	WS: 19 G:23 NNW	WS: 19 G:22 NNW	WS: 17 G:22 NNW	WS: 16 G:20 NNW	WS: 14 G:18 NNW	WS: 13 G:17 NNW	WS: 12 G:16 NNW	WS: 12 G:15 NNW	WS: 11 G:14 NNW	WS: 11 G:14 NNW	WS: 10 G:13 NNW	WS: 10 G:13 NNW	WS: 10 G:13 NNW	WS: 10 G:13 NNW	WS: 10 G:13 NNW	WS: 9 G:11 NNW	WS: 9 G:11 NNW	WS: 9 G:11 NNW	WS: 9 G:11 NNW	WS: 9 G:11 NNW	WS: 9 G:11 NNW	WS: 9 G:11 NNW	WS: 9 G:11 NNW	WS: 9 G:11 NNW	WS: 9 G:11 NNW	WS: 9 G:11 NNW	WS: 9 G:11 NNW	WS: 9 G:11 NNW	
Houston Pilots C - 25/26	WS: 20 G:31 NNW	WS: 13 G:23 NNW	WS: 11 G:22 NNW	WS: 16 G:25 NNW	WS: 23 G:33 NNW	WS: 23 G:33 NNW	WS: 23 G:33 NNW	WS: 23 G:30 NNW	WS: 22 G:27 NNW	WS: 21 G:27 NNW	WS: 20 G:26 NNW	WS: 19 G:23 NNW	WS: 19 G:22 NNW	WS: 17 G:22 NNW	WS: 15 G:20 NNW	WS: 13 G:18 NNW	WS: 13 G:17 NNW	WS: 12 G:16 NNW	WS: 12 G:15 NNW	WS: 11 G:14 NNW	WS: 11 G:14 NNW	WS: 10 G:13 NNW	WS: 10 G:13 NNW	WS: 10 G:13 NNW	WS: 10 G:13 NNW	WS: 10 G:13 NNW	WS: 9 G:11 NNW	WS: 9 G:11 NNW	WS: 9 G:11 NNW	WS: 9 G:11 NNW	WS: 9 G:11 NNW	WS: 9 G:11 NNW	WS: 9 G:11 NNW	WS: 9 G:11 NNW	WS: 9 G:11 NNW	WS: 9 G:11 NNW	WS: 9 G:11 NNW	WS: 9 G:11 NNW	WS: 9 G:11 NNW	
Houston Pilots B - 11/12	WS: 17 G:30 NNW	WS: 16 G:26 NNW	WS: 13 G:22 NNW	WS: 11 G:21 WNW	WS: 16 G:26 NNW	WS: 23 G:32 NNW	WS: 23 G:31 NNW	WS: 23 G:30 NNW	WS: 22 G:27 NNW	WS: 20 G:27 NNW	WS: 19 G:26 NNW	WS: 18 G:23 NNW	WS: 18 G:22 NNW	WS: 16 G:21 NNW	WS: 14 G:20 NNW	WS: 11 G:19 NNW	WS: 10 G:18 NNW	WS: 10 G:17 NNW	WS: 10 G:16 NNW	WS: 9 G:15 NNW	WS: 9 G:14 NNW	WS: 8 G:13 NNW	WS: 8 G:13 NNW	WS: 8 G:13 NNW	WS: 8 G:13 NNW	WS: 8 G:13 NNW	WS: 8 G:13 NNW	WS: 8 G:13 NNW	WS: 8 G:13 NNW	WS: 8 G:13 NNW	WS: 8 G:13 NNW	WS: 8 G:13 NNW	WS: 8 G:13 NNW	WS: 8 G:13 NNW	WS: 8 G:13 NNW	WS: 8 G:13 NNW	WS: 8 G:13 NNW	WS: 8 G:13 NNW	WS: 8 G:13 NNW	
Houston Pilots A - 1 & 2 Bravo	WS: 17 G:29 NNW	WS: 22 G:32 NNW	WS: 17 G:23 NNW	WS: 15 G:25 NNW	WS: 20 G:32 NNW	WS: 28 G:32 NNW	WS: 30 G:35 NNW	WS: 27 G:32 NNW	WS: 24 G:30 NNW	WS: 23 G:27 NNW	WS: 21 G:25 NNW	WS: 20 G:24 NNW	WS: 20 G:23 NNW	WS: 19 G:22 NNW	WS: 17 G:21 NNW	WS: 16 G:20 NNW	WS: 15 G:19 NNW	WS: 15 G:18 NNW	WS: 15 G:17 NNW	WS: 14 G:16 NNW	WS: 14 G:15 NNW	WS: 14 G:14 NNW	WS: 13 G:13 NNW	WS: 12 G:12 NNW	WS: 12 G:12 NNW	WS: 12 G:12 NNW	WS: 12 G:12 NNW	WS: 12 G:12 NNW	WS: 12 G:12 NNW	WS: 12 G:12 NNW	WS: 12 G:12 NNW	WS: 12 G:12 NNW	WS: 12 G:12 NNW	WS: 12 G:12 NNW	WS: 12 G:12 NNW	WS: 12 G:12 NNW	WS: 12 G:12 NNW	WS: 12 G:12 NNW	WS: 12 G:12 NNW	WS: 12 G:12 NNW

See slides below for official thoughts on winds.

# Houston Pilots: Tue. 10/25/2022



## Forecast Discussion

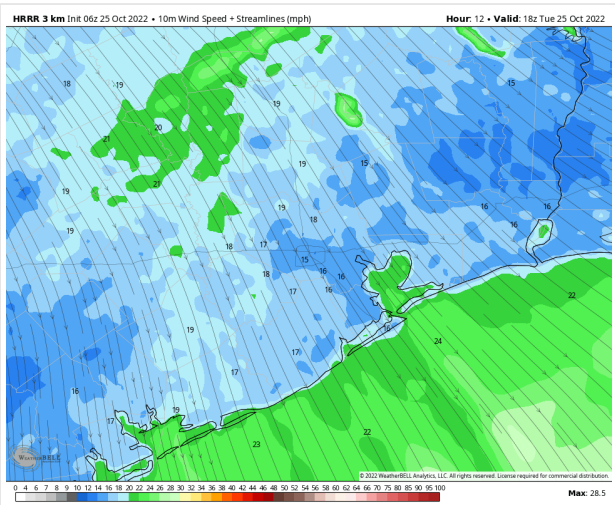
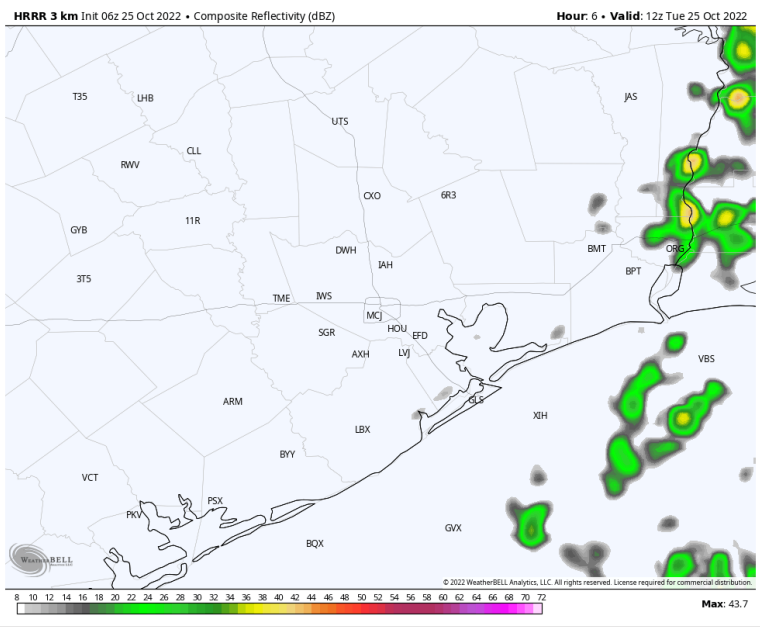
**Precip:** By 5 AM these showers/storms will have moved out of the area leaving clearing conditions the rest of the day.

**Wind:** After the front moves through, winds will shift from the NW and lull for a brief period N of Morgan's point to 6-11 MPH, then pick back up by 7 AM to 11-16 MPH. After the passage of the cold front around 5 AM, winds remain elevated for all stations S of Morgan's point, with winds of 21-26 MPH and gusts of 30 – 35 MPH. By 7 PM, winds rapidly diminish N of Morgan's point 2-7 MPH, while S of Morgan's point winds will be 13-20 MPH.

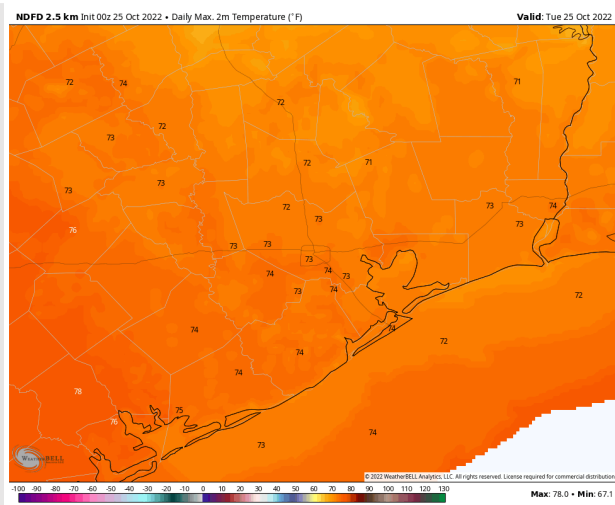
**Temps:** High temps Tuesday for all stations in the low 70s F.

**Visibility:** Not anticipating visibility concerns at this time.

## Precip Forecast: 7 AM CT



Wind Speed  
1 PM CT

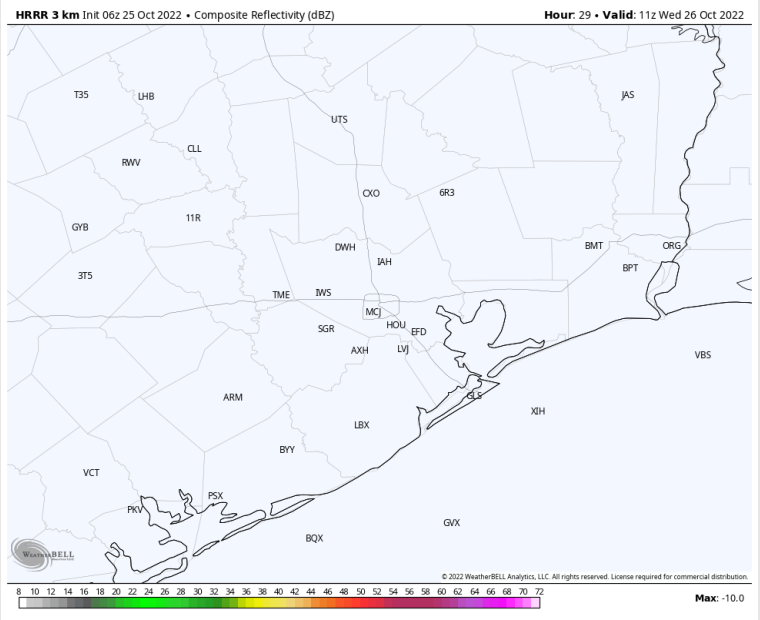


High Temps  
Today

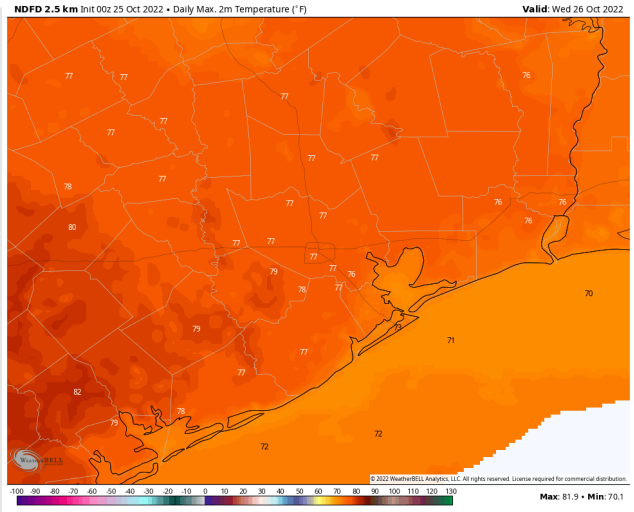
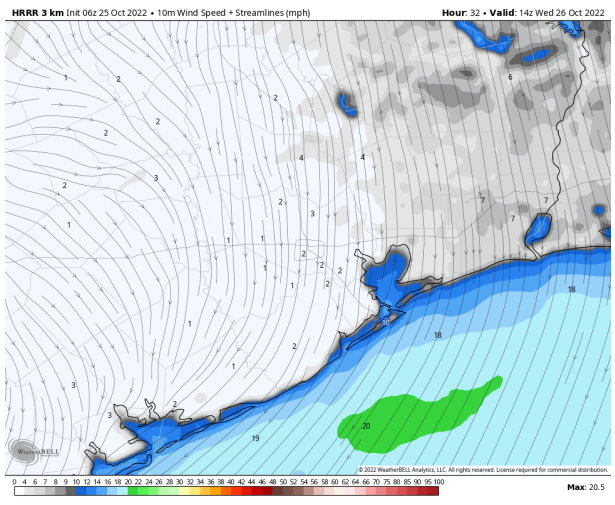
## Forecast Discussion

- Precip:** Anticipating dry conditions Wednesday.
- Wind:** Sustained wind Wednesday AM out of the NNE at 3-8 MPH north of Morgan's Point and 10-15 MPH south of Morgan's Point. Winds will gradually become variable by 4PM and all sustained winds will be with the 3-8 MPH range. After 7, winds will veer out of the ENE at 8-13 MPH where they will continue the rest of the night.
- Temps:** High temps Wednesday near 70 F at the boarding station and in the mid 70s F at all other stations.
- Visibility:** Not anticipating visibility concerns at this time.

## Precip Forecast: 6 AM CT



Wind Speed  
9 AM CT



High Temps  
Wednesday



## Forecast Discussion

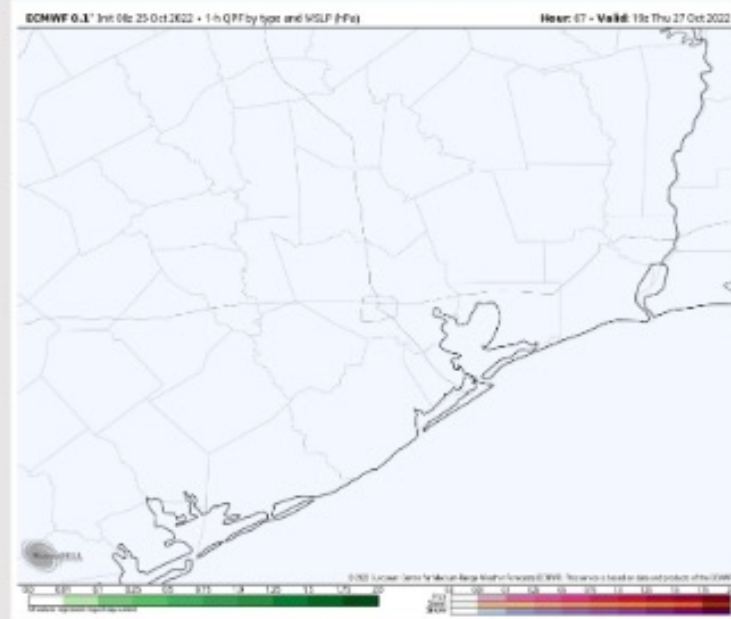
**Precip:** Favoring dry conditions throughout the day Thursday.

**Wind:** Sustained winds out of the SE early Thursday AM at 3-7 MPH until 5 AM. After 5 AM, winds shift out of the ENE at 5-10 MPH N of Morgan's Point and 12-17 MPH S of Morgan's Point. After 12 PM, winds shift out of the SE at 9-14 MPH for the rest of the day at all stations. Wind gusts of 15-20 MPH possible from 12 PM- 7 PM.

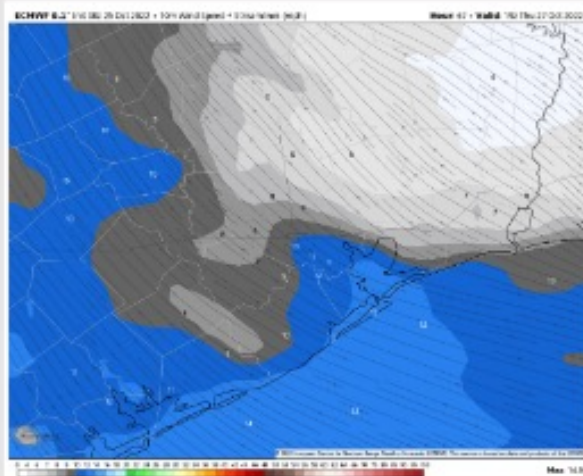
**Temps:** High temps Thursday in the low 70s F near the boarding station and in the mid to upper 70s F for all other stations.

**Visibility:** Not anticipating any visibility concerns at this time.

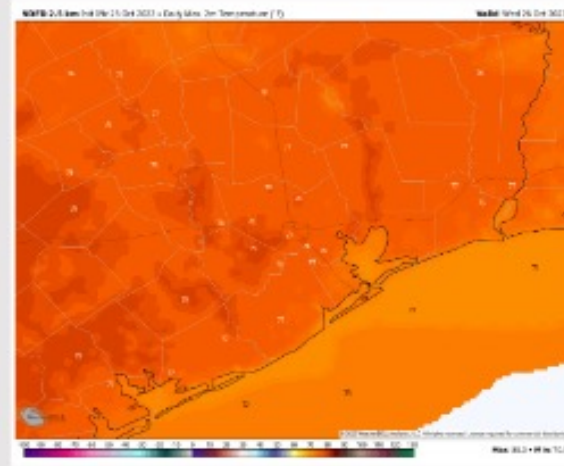
## Precip Forecast: 2 PM CT



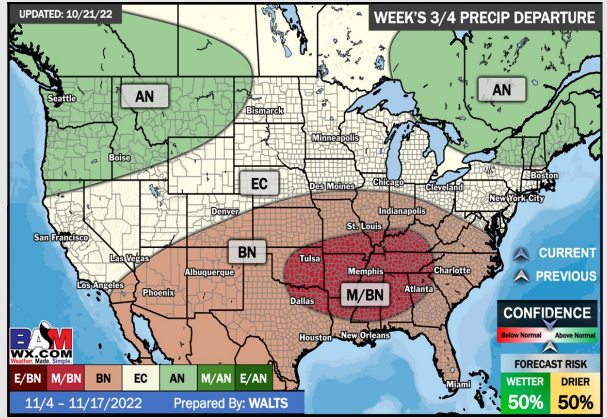
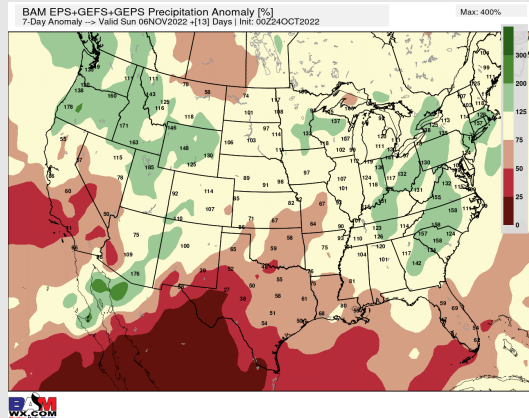
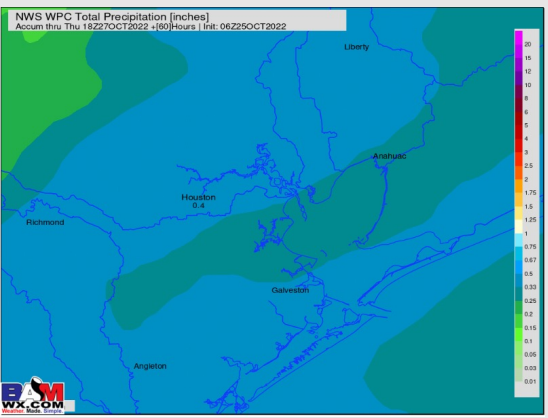
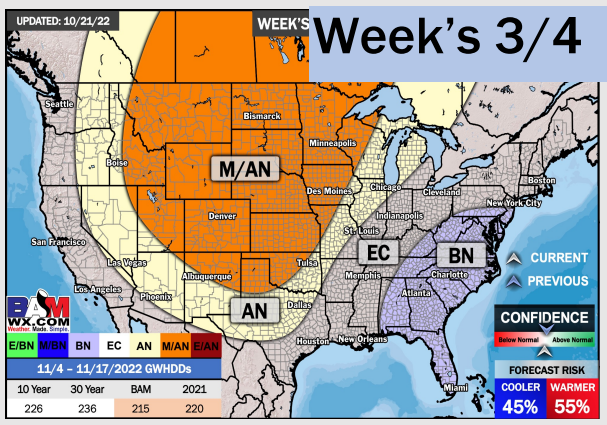
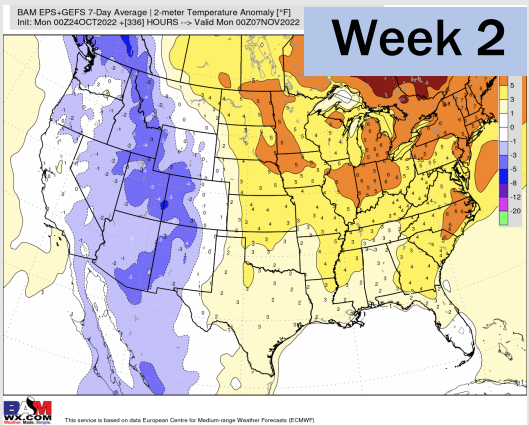
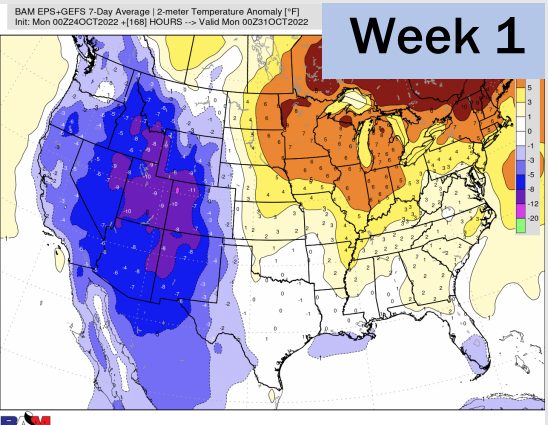
Wind Speed  
6 PM CT



High Temps  
Thur PM



# Houston Pilots: 10/25/22



- Temperatures expected to be near normal next week. More widespread chances of rain going into Friday.
- Week 2 to feature near or slightly above normal temperatures and below normal precipitation.
- The weeks 3/4 timeframe into November looks to feature normal temperatures and below normal to normal risks for precip.