

Houston Pilots Forecast Package

Houston Pilots

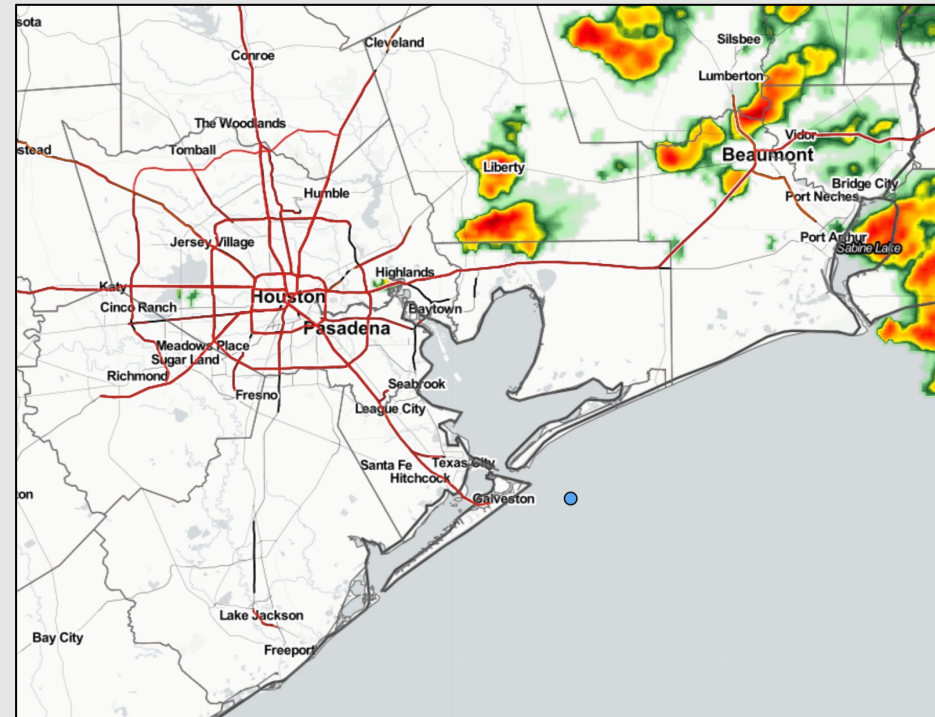
Updated: 6:35 AM CT

Thursday, October 13, 2022

Forecaster: Tyler Hollingsworth

Weather Headlines

- Monitoring the potential for low end scattered showers and thunderstorms the next few days.
- No direct tropical activity is favored in SE TX over the next 7-10 days.
- Some gusts of 20+ MPH possible over next couple of days. More details on wind forecasts for each day below.

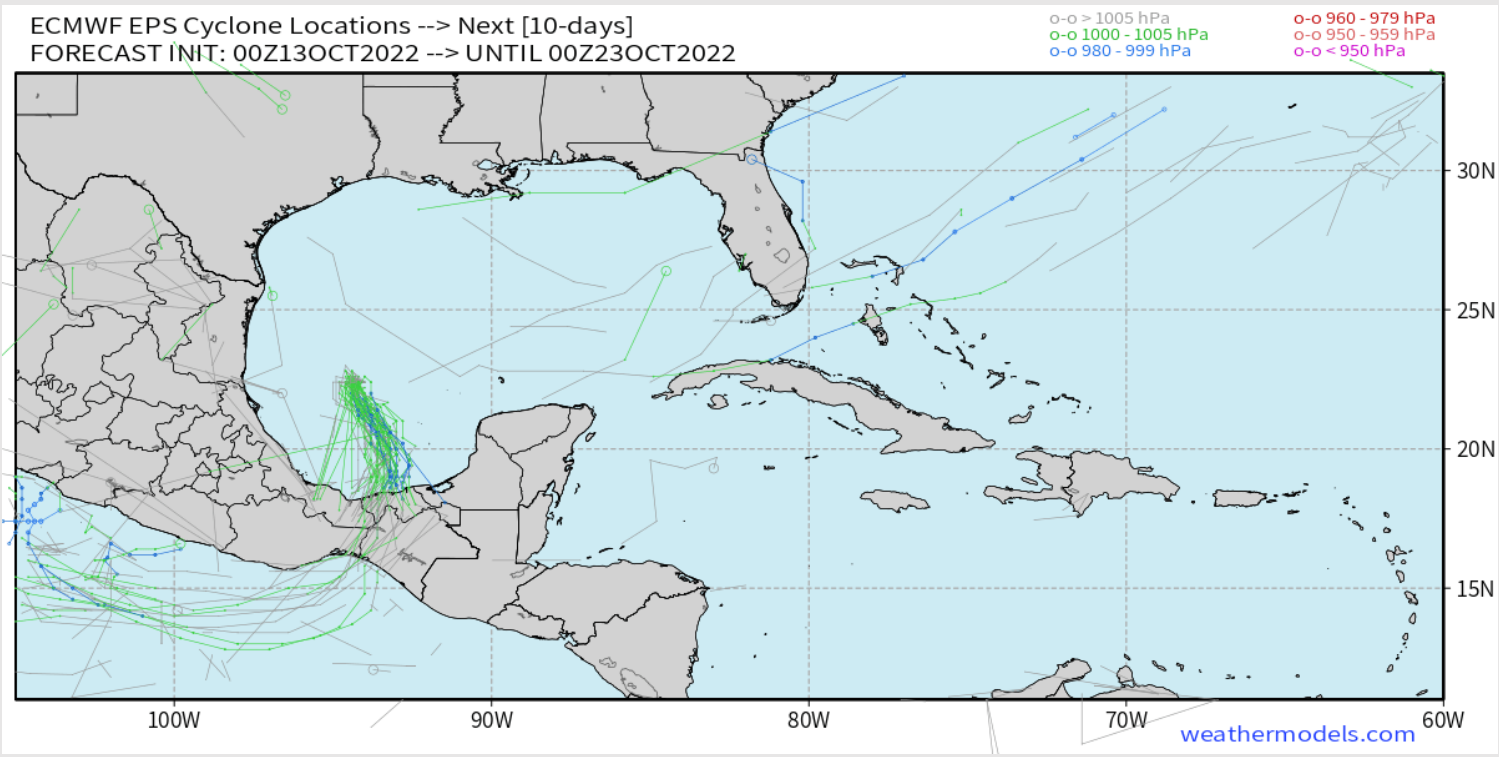


Radar/ NWS Alerts: 6:35 AM CT



As always, please do not hesitate to reach out to us with any forecast questions via the chat option on the Weather Porthole or our on-call number, **(317)-560-8122** press 1 for forecast questions.

European Data Tracks Next 10 Days



There are no tropical threats associated with Karl nor any anticipated tropical activity for SE TX over the nest 7-10 days.

Confidence



Above Normal Below Normal

Houston Pilots: Thurs. 10/13/2022



Forecast Discussion

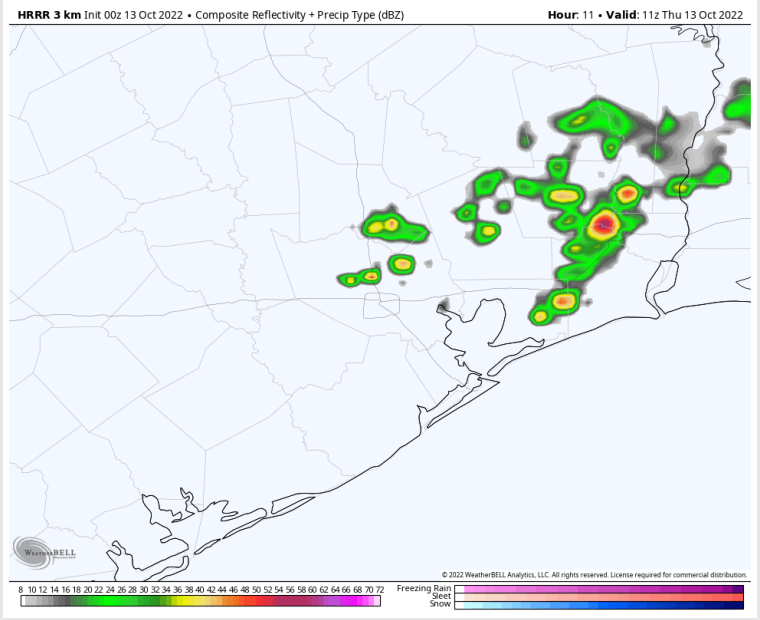
Precip: Anticipating a 10-20% chance for scattered showers and storms to move south into the HOU Metro region between 5-9AM. Favoring a dry window from 9AM to 4PM. From 4PM through the rest of the overnight showers/storms will be just west of monitored stations leaving mostly dry conditions for the monitored stations with a few isolated chances possible.

Wind: Variable winds for most of this morning at 7-12 MPH. At about 9 AM, winds of about 20-25 MPH will come from the E towards the boarding station. Winds will calm down to 4-8 MPH SE by 12 PM. Winds after 12 PM are anticipated to be 3-9 MPH to 4 PM. By 5 PM, winds start to pick back up to 8-13 MPH SE and then calms back down to 4-8 MPH by 8 PM and remain through midnight. If caught by an isolated cell from 8 PM to midnight, expect to see gusts of 20+ MPH locally.

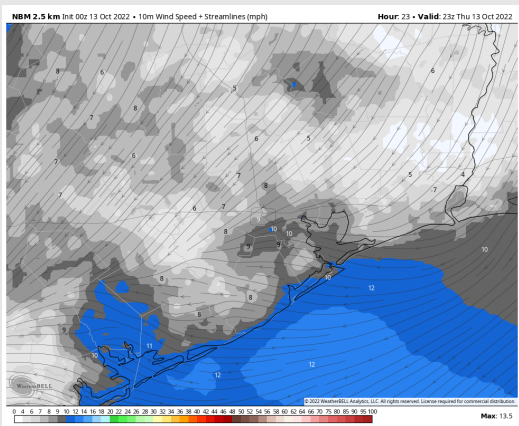
Temps: High temps today in the low 80s F near the boarding station and near 90 F for all stations.

Visibility: Not anticipating visibility concerns at this time.

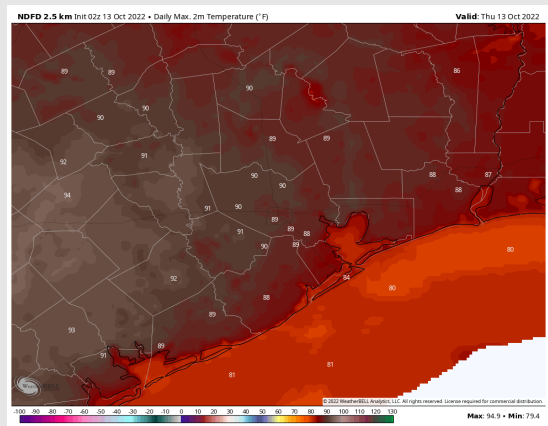
Precip Forecast: 6 AM CT



Wind Speed
6 PM CT



High Temps
Thursday



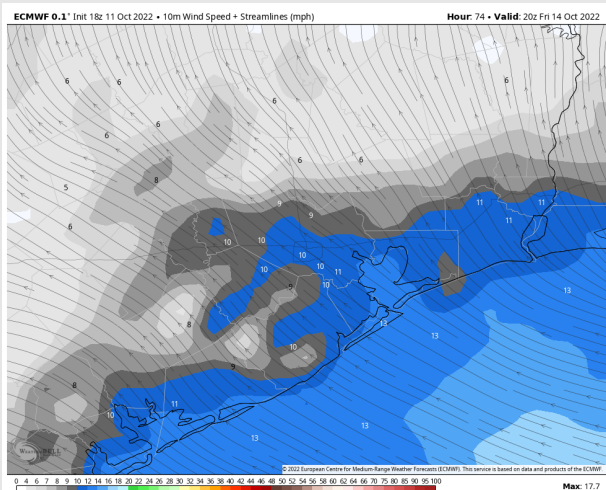
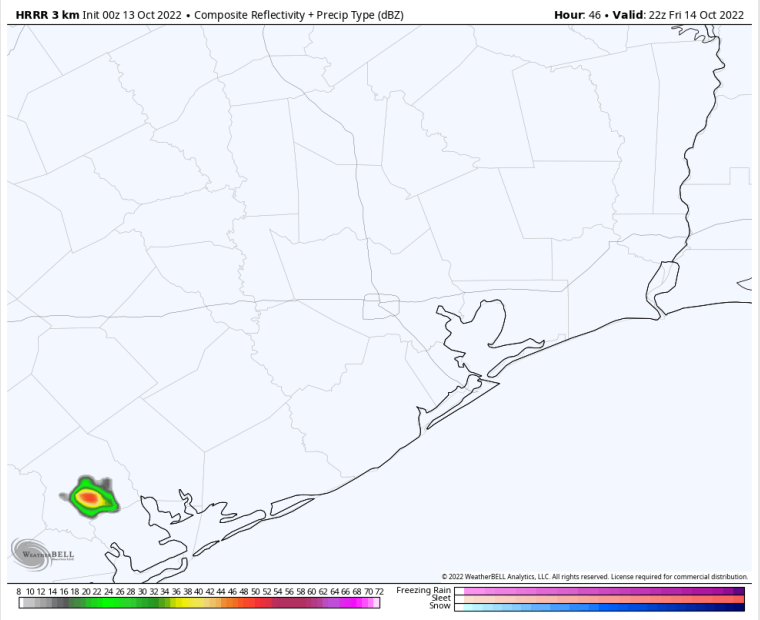
Houston Pilots: Fri. 10/14/2022



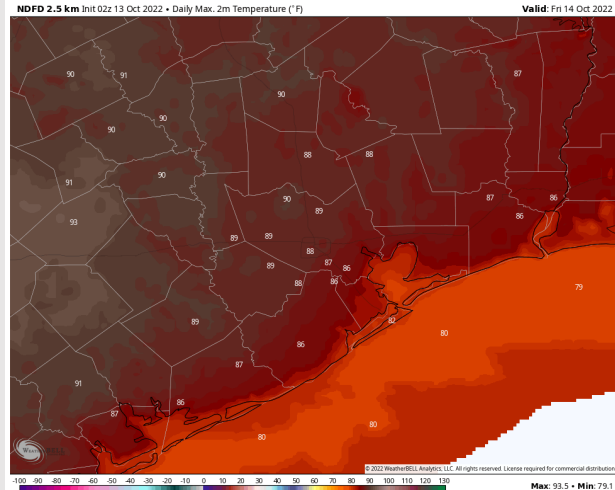
Forecast Discussion

- Precip:** Favoring dry conditions for Friday.
- Wind:** Winds shift to the NE after midnight. Winds will be 5-10 MPH within the Bay until 6AM and 10-15 MPH at the boarding station. After 6AM, winds will gradually increase within that 6AM-1PM timeframe. After 1PM winds will shift out of the SE and remain sustained at 8-13 MPH with winds of 10-15 MPH around the boarding station. Gusts of 20-25 MPH are possible around the boarding station in the AM hours.
- Temps:** High temps Friday near 80 F for the boarding station and in the mid 80s F at all other stations.
- Visibility:** Not anticipating visibility concerns at this time.

Precip Forecast: 5 PM CT



Wind Speed
3 PM CT



High Temps
Friday

Houston Pilots: Sat. 10/15/2022



Forecast Discussion

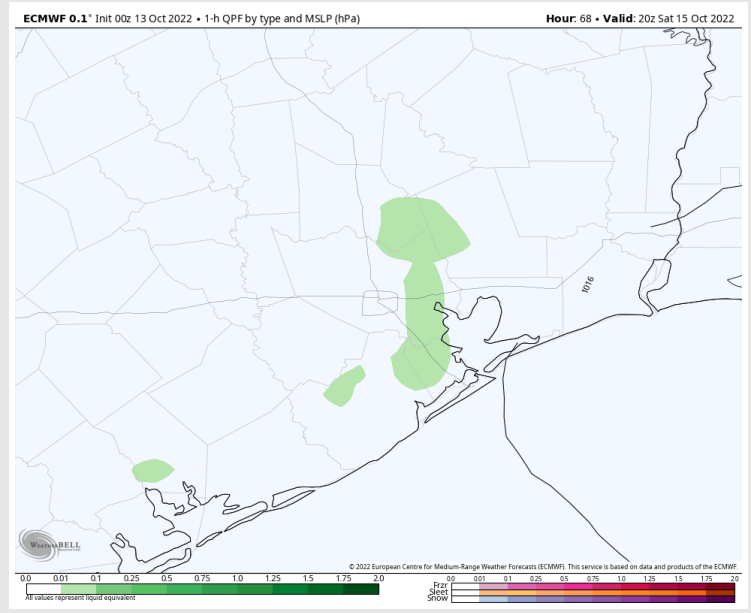
Precip: Favoring mostly dry conditions in the AM Saturday. Scattered showers will likely move in around 1PM and continue until 9PM.

Wind: Sustained winds out of the SE at 8-13 MPH through the AM. Winds north of Morgan's Point will see a bit calmer winds at 3-8 MPH. Going into the afternoon, SE winds increase to 10-15 MPH sustained with gusts to about 20 MPH. Around midnight, winds from the SE are expected to be about 13-18 MPH around the boarding station.

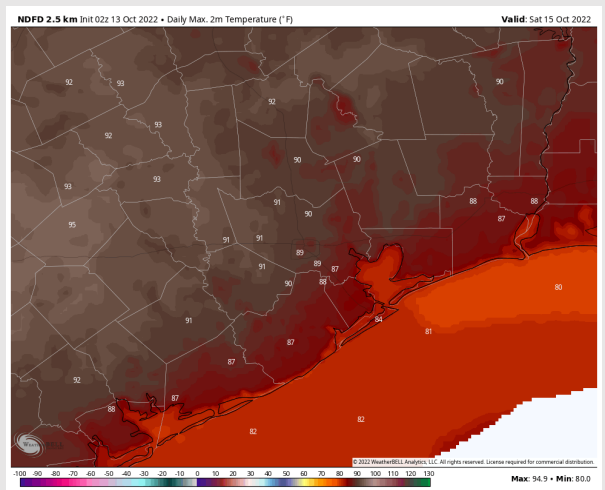
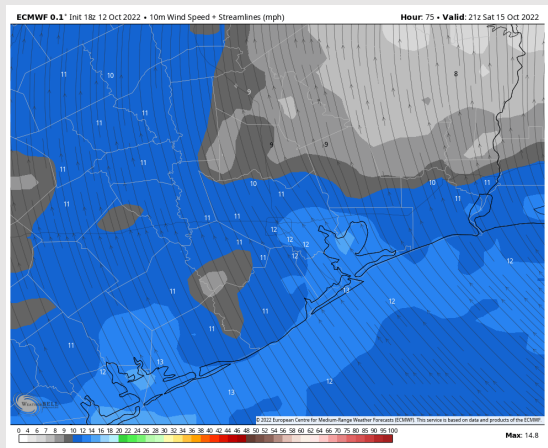
Temps: High temps in the low 80s F at the boarding station and in the upper 80s F at all other stations.

Visibility: Not favoring any concerns for reduced visibility.

Precip Forecast: 3 PM CT

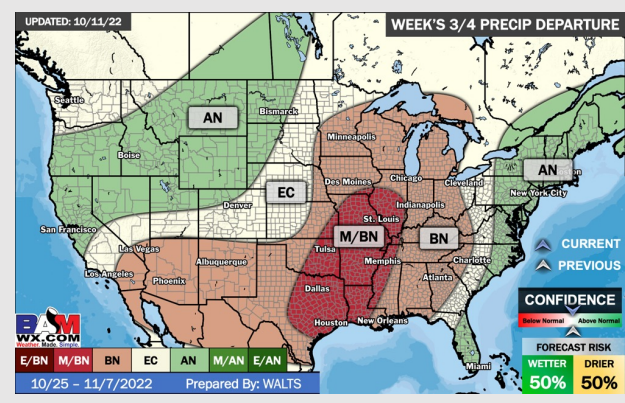
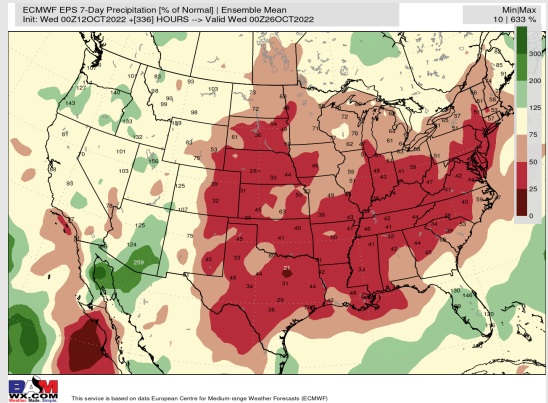
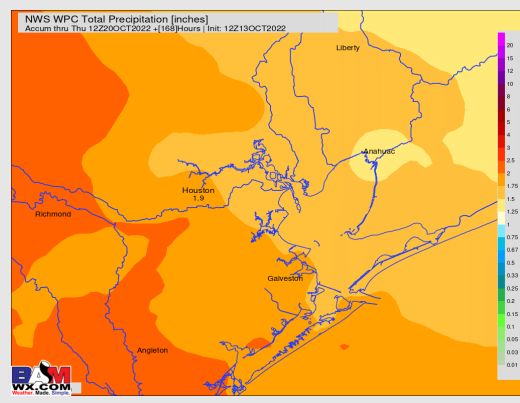
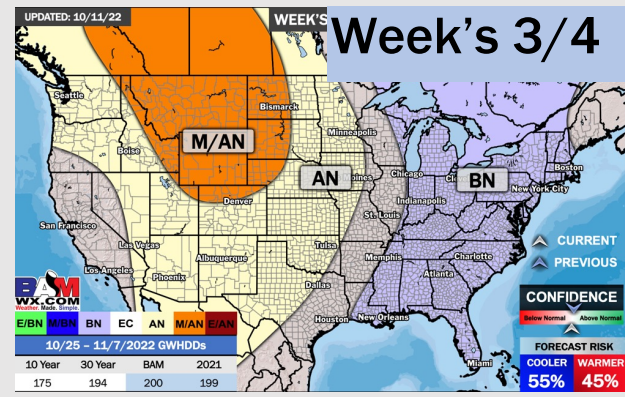
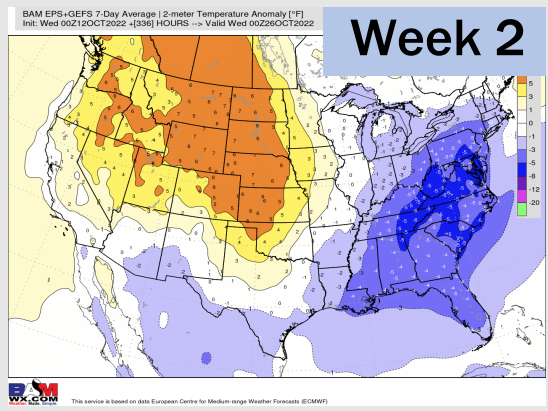
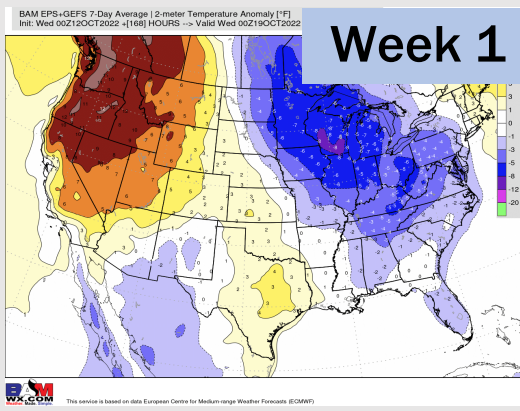


Wind Speed
4 PM CT



High Temps
Sat.

Houston Pilots: 10/13/22



- Temperatures expected to be above normal next week. More widespread chances of rain on Sunday headed into Monday.
- Week 2 likely feature periods of slightly below normal temperatures and below normal precipitation.
- The weeks ¾ timeframe into late October looks to feature below normal temperatures and below normal risks for precip.